

**Component Detail (1077)**  
**Department of Transportation/Public Facilities**

**Component:** Central Design and Engineering Services (2298)

Non-Formula Component

**RDU:** Design, Engineering and Construction (526)

IRIS AP Type: T04E

	FY2018 Actuals (15158)	FY2019 Conference Committee (14954)	FY2019 Authorized (14962)	FY2019 Management Plan (14994)	FY2020 Governor (15610)	FY2020 Governor Amended (15636)	FY2020 Governor vs FY2020 Governor Amended	
1000 Personal Services	20,772.6	22,160.5	22,160.5	22,160.5	22,786.3	22,160.5	-625.8	-2.7%
2000 Travel	17.8	31.3	31.3	31.3	31.3	22.4	-8.9	-28.4%
3000 Services	806.1	609.6	609.6	609.6	609.6	609.6	0.0	0.0%
4000 Commodities	364.9	159.9	159.9	159.9	159.9	159.9	0.0	0.0%
5000 Capital Outlay	148.0	5.0	5.0	5.0	5.0	5.0	0.0	0.0%
7000 Grants, Benefits	0.0	0.0	0.0	0.0	0.0	0.0	0.0	0.0%
8000 Miscellaneous	0.0	0.0	0.0	0.0	0.0	0.0	0.0	0.0%
<b>Totals</b>	<b>22,109.4</b>	<b>22,966.3</b>	<b>22,966.3</b>	<b>22,966.3</b>	<b>23,592.1</b>	<b>22,957.4</b>	<b>-634.7</b>	<b>-2.7%</b>
<b><u>Funding Sources:</u></b>								
1004 Gen Fund (UGF)	95.9	106.7	106.7	106.7	106.8	106.7	-0.1	-0.1%
1005 GF/Prgm (DGF)	523.1	550.0	550.0	550.0	566.2	550.0	-16.2	-2.9%
1007 I/A Rcpts (Other)	13.3	37.8	37.8	37.8	39.2	37.8	-1.4	-3.6%
1061 CIP Rcpts (Other)	21,477.1	22,271.8	22,271.8	22,271.8	22,879.9	22,262.9	-617.0	-2.7%
<b><u>Funding Totals:</u></b>								
<b>Unrestricted General (UGF)</b>	<b>95.9</b>	<b>106.7</b>	<b>106.7</b>	<b>106.7</b>	<b>106.8</b>	<b>106.7</b>	<b>-0.1</b>	<b>-0.1%</b>
<b>Designated General (DGF)</b>	<b>523.1</b>	<b>550.0</b>	<b>550.0</b>	<b>550.0</b>	<b>566.2</b>	<b>550.0</b>	<b>-16.2</b>	<b>-2.9%</b>
<b>Other</b>	<b>21,490.4</b>	<b>22,309.6</b>	<b>22,309.6</b>	<b>22,309.6</b>	<b>22,919.1</b>	<b>22,300.7</b>	<b>-618.4</b>	<b>-2.7%</b>
<b>Federal</b>	<b>0.0</b>	<b>0.0</b>	<b>0.0</b>	<b>0.0</b>	<b>0.0</b>	<b>0.0</b>	<b>0.0</b>	<b>0.0%</b>
<b><u>Positions:</u></b>								
Permanent Full Time	163	163	163	163	163	163	0	0.0%
Permanent Part Time	16	16	16	16	16	16	0	0.0%
Non Permanent	6	6	6	6	6	6	0	0.0%

**Change Record Detail - Multiple Scenarios with Descriptions (294)**  
**Department of Transportation/Public Facilities**

**Component:** Central Design and Engineering Services (2298)  
**RDU:** Design, Engineering and Construction (526)

Scenario/Change Record Title	Trans Type	Totals	Personal Services	Travel	Services	Commodities	Capital Outlay	Grants, Benefits	Miscellaneous	PFT	Positions PPT	NP
***** Changes From FY2019 Conference Committee To FY2019 Authorized *****												
<b>FY2019 Conference Committee</b>												
	ConfCom	22,966.3	22,160.5	31.3	609.6	159.9	5.0	0.0	0.0	163	16	6
1004 Gen Fund		106.7										
1005 GF/Prgm		550.0										
1007 I/A Rcpts		37.8										
1061 CIP Rcpts		22,271.8										
<b>Subtotal</b>		<b>22,966.3</b>	<b>22,160.5</b>	<b>31.3</b>	<b>609.6</b>	<b>159.9</b>	<b>5.0</b>	<b>0.0</b>	<b>0.0</b>	<b>163</b>	<b>16</b>	<b>6</b>
***** Changes From FY2019 Authorized To FY2019 Management Plan *****												
<b>Transfer Engineering Assistant III (25-0648) from Central Region Construction &amp; CIP Support</b>												
	Trin	0.0	0.0	0.0	0.0	0.0	0.0	0.0	0.0	1	0	0
Exchanging two positions between the Central Design and Engineering Services (D&ES) component and the Central Region Construction and CIP Support (C&CS) component allows the department to realign duties and increase operational efficiency.												
Transfer to D&ES-Engineering Assistant III (25-0648), range 21, from C&CS												
Transfer to C&CS-Engineering Assistant III (25-0633), range 21, from D&ES												
<b>Transfer Engineering Assistant III (25-0633) to Central Region Construction &amp; CIP Support</b>												
	Trout	0.0	0.0	0.0	0.0	0.0	0.0	0.0	0.0	-1	0	0
Exchanging two positions between the Central Design and Engineering Services (D&ES) component and the Central Region Construction and CIP Support (C&CS) component allows the department to realign duties and increase operational efficiency.												
Transfer to D&ES-Engineering Assistant III (25-0648), range 21, from C&CS												
Transfer to C&CS-Engineering Assistant III (25-0633), range 21, from D&ES												
<b>Subtotal</b>		<b>22,966.3</b>	<b>22,160.5</b>	<b>31.3</b>	<b>609.6</b>	<b>159.9</b>	<b>5.0</b>	<b>0.0</b>	<b>0.0</b>	<b>163</b>	<b>16</b>	<b>6</b>
***** Changes From FY2019 Management Plan To FY2020 Governor Amended *****												
<b>Executive Branch 50% Travel Reduction</b>												
	Dec	-8.9	0.0	-8.9	0.0	0.0	0.0	0.0	0.0	0	0	0
1061 CIP Rcpts		-8.9										
50% executive branch travel reduction based on actual costs of travel in FY2018. Exceptions were made to travel essential to public safety, health, and disaster management.												
<b>Totals</b>		<b>22,957.4</b>	<b>22,160.5</b>	<b>22.4</b>	<b>609.6</b>	<b>159.9</b>	<b>5.0</b>	<b>0.0</b>	<b>0.0</b>	<b>163</b>	<b>16</b>	<b>6</b>

## Personal Services Expenditure Detail (1445)

### Department of Transportation/Public Facilities

**Scenario:** FY2020 Governor Amended (15636)

**Component:** Central Design and Engineering Services (2298)

**RDU:** Design, Engineering and Construction (526)

Status	PCN	Tracking ID	Job Class Title	Time Status	Retire Code	Barg Unit	Location	Salary Sched	Range / Steps	Comp Months	Split / Count	Annual Salaries	COLA	Premium Pay	Annual Benefits	Total Costs	UGF Amount
25-0175		18760	Administrative Officer I	FT	A	GP	Anchorage	200	17 M / N	12.0		77,472	3,180	0	47,008	127,660	
25-0224		18798	Engineer/Architect III	FT	A	SS	Anchorage	200	25 N / O	12.0		147,322	0	0	72,175	219,497	
25-0236		18803	Engineering Assistant III	FT	A	GP	Anchorage	200	21 K	12.0		92,340	3,790	0	52,481	148,611	
25-0241		18808	Engineering Assistant III	FT	A	GP	Anchorage	200	21 B / C	12.0		73,046	3,343	8,397	48,469	133,255	
25-0242		18809	Admin Asst III	FT	A	GP	Anchorage	200	15 L / M	12.0		64,828	2,661	0	42,354	109,843	
25-0249		18814	Engineer/Architect I	FT	A	GP	Anchorage	200	22 K / L	12.0		99,306	4,076	0	55,045	158,427	
25-0251		18816	Survey Instrum Tech II	FT	A	SS	Anchorage	600	17 A	12.0		58,776	0	0	40,466	99,242	
25-0252		18817	Survey Instrum Tech Tne	FT	A	GP	Anchorage	200	14 E / F	12.0		51,404	2,110	0	37,412	90,926	
25-0378		18921	Engineer/Architect IV	FT	A	SS	Anchorage	200	26 J / K	12.0		130,792	0	0	66,975	197,767	
25-0382		18924	Engineer/Architect V	FT	A	SS	Anchorage	200	27 U / V	12.0		196,852	0	0	87,371	284,223	11,191
25-0387		18928	Engineer/Architect IV	FT	A	SS	Anchorage	200	26 C	12.0		112,980	0	0	60,418	173,398	
25-0389		18930	Engineer/Architect IV	FT	A	SS	Anchorage	200	26 P	12.0		161,242	0	0	76,446	237,688	
25-0401		18936	Administrative Assistant I	FT	A	GP	Anchorage	200	12 C / D	12.0		41,076	1,686	0	33,610	76,372	
25-0402		18937	Engineer/Architect II	FT	A	SS	Anchorage	200	23 J	12.0		109,200	0	0	59,027	168,227	
25-0404		18939	Engineer/Architect III	FT	A	SS	Anchorage	200	25 N	12.0		142,476	0	0	70,689	213,165	
25-0407		18942	Engineer/Architect I	FT	A	GP	Anchorage	200	22 B / C	12.0		79,776	3,274	0	47,856	130,906	
25-0413		18947	Engineer/Architect I	FT	A	GP	Anchorage	200	22 J / K	12.0		98,645	4,049	0	54,802	157,496	
25-0414		18948	Engineer/Architect IV	FT	A	SS	Anchorage	200	26 P	12.0		161,242	0	0	76,446	237,688	
25-0416		18950	Tech Eng II / Architect II	FT	A	SS	Anchorage	200	25 C	12.0		109,308	0	0	59,067	168,375	
25-0421		18955	Right of Way Agent III	FT	A	GP	Anchorage	200	18 F / G	12.0		69,407	2,849	0	44,039	116,295	
25-0423		18957	Land Survey Manager I	FT	A	SS	Anchorage	200	23 P	12.0		135,535	0	0	68,559	204,094	
25-0424		18958	Land Surveyor I	FT	A	GP	Anchorage	200	21 L	12.0		95,340	3,913	0	53,585	152,838	
25-0427		18959	Right of Way Agent II	FT	A	GP	Anchorage	200	16 F / G	12.0		61,161	2,510	0	41,004	104,675	
25-0429		18961	Engineer/Architect II	FT	A	SS	Anchorage	200	23 R	12.0		145,891	0	0	71,736	217,627	
25-0433		18964	Right of Way Agent III	FT	A	GP	Anchorage	200	18 G	12.0		70,212	2,882	0	44,335	117,429	
25-0435		18966	Engineer/Architect IV	FT	A	SS	Anchorage	200	26 M	12.0		144,383	0	0	71,274	215,657	
25-0452		18978	Drafting Technician III	FT	A	GP	Anchorage	200	15 G	12.0		57,336	2,353	0	39,596	99,285	
25-0468		18990	Office Assistant I	FT	A	GP	Anchorage	200	8 B / C	12.0		31,265	1,283	0	29,999	62,547	
25-0473		18993	Right of Way Agent IV	FT	A	SS	Anchorage	200	20 O / P	12.0		108,046	0	0	58,602	166,648	

Note: If a position is split, an asterisk (\*) will appear in the Split/Count column. If the split position is also counted in the component, two asterisks (\*\*) will appear in this column. [No valid job title] appearing in the Job Class Title indicates that the PCN has an invalid class code or invalid range for the class code effective date of this scenario.

## Personal Services Expenditure Detail (1445)

### Department of Transportation/Public Facilities

**Scenario:** FY2020 Governor Amended (15636)

**Component:** Central Design and Engineering Services (2298)

**RDU:** Design, Engineering and Construction (526)

Status	PCN	Tracking ID	Job Class Title	Time Status	Retire Code	Barg Unit	Location	Salary Sched	Range / Steps	Comp Months	Split / Count	Annual Salaries	COLA	Premium Pay	Annual Benefits	Total Costs	UGF Amount
25-0474	18994	Right of Way Agent IV	FT	A	SS	Anchorage	200	20 J / K	12.0			89,694	0	0	51,847	141,541	
25-0475	18995	Engineering Assistant II	FT	A	GP	Anchorage	200	19 A	12.0			61,416	2,521	0	41,098	105,035	
25-0476	18996	Right of Way Agent III	FT	A	GG	Anchorage	200	18 C / D	12.0			62,904	2,582	0	41,645	107,131	
25-0477	18997	Right of Way Agent III	FT	A	GP	Anchorage	200	18 G / J	12.0			72,012	2,956	0	44,998	119,966	
25-0479	18999	Engineering Assistant III	FT	A	GP	Anchorage	200	21 E / F	12.0			83,088	3,410	0	49,075	135,573	
25-0480	19000	Right of Way Agent III	FT	A	GP	Anchorage	200	18 J / K	12.0			75,072	3,081	0	46,124	124,277	
25-0482	19002	Right of Way Agent II	FT	A	GP	Anchorage	200	16 G	12.0			61,416	2,521	0	41,098	105,035	
25-0485	19004	Right of Way Agent II	FT	A	GP	Anchorage	200	16 J	12.0			63,960	2,625	0	42,034	108,619	
25-0486	19005	Right of Way Agent III	FT	A	GP	Anchorage	200	18 D / E	12.0			65,179	2,675	0	42,483	110,337	
25-0487	19006	Drafting Technician III	FT	A	GG	Anchorage	200	15 N / O	12.0			69,857	2,867	0	44,205	116,929	
25-0488	19007	Drafting Technician III	FT	A	GP	Anchorage	200	15 E / F	12.0			55,129	2,263	0	38,783	96,175	
25-0492	19009	Right of Way Assistant	FT	A	GP	Anchorage	200	12 A / B	12.0			39,288	1,612	0	32,952	73,852	
25-0495	19012	Office Assistant II	FT	A	GP	Anchorage	200	10 B / C	12.0			35,522	1,458	0	31,566	68,546	
25-0496	19013	Right of Way Assistant	FT	A	GP	Anchorage	200	12 B / C	12.0			40,278	1,653	0	33,317	75,248	
25-0497	19014	Administrative Assistant I	FT	A	GP	Anchorage	200	12 D / E	12.0			42,287	1,736	0	34,056	78,079	
25-0499	19016	Right of Way Agent II	FT	A	GP	Anchorage	200	16 B / C	12.0			52,050	2,136	0	37,650	91,836	
25-0501	19018	Engineering Assistant II	FT	A	GP	Anchorage	200	19 D / E	12.0			68,243	2,801	0	43,611	114,655	
25-0504	19021	Tech Eng I / Architect I	FT	A	GP	Anchorage	200	24 L	12.0			117,432	4,820	0	61,717	183,969	
25-0507	19024	Engineering Assistant III	FT	A	GP	Anchorage	200	21 F / G	12.0			85,722	3,912	9,587	53,574	152,795	
25-0515	19032	Engineering Assistant III	FT	A	GG	Anchorage	200	21 N / O	12.0			105,263	4,320	0	57,238	166,821	
25-0531	19048	Engineering Assistant II	FT	A	GP	Anchorage	200	19 B / C	12.0			64,916	2,965	7,328	45,083	120,292	
25-0541	19057	Engineering Assistant III	FT	A	GP	Anchorage	200	21 K / L	12.0			92,840	4,248	10,653	56,586	164,327	
25-0561	19072	Right of Way Agent I	FT	A	GP	Anchorage	200	14 B / C	12.0			44,997	1,847	0	35,054	81,898	
25-0590	19091	Matlab Tech Journey	PT	A	LL	Anchorage	2AA	53 P	9.0			53,060	0	13,605	38,329	104,994	
25-0598	19097	Engineering Assistant III	FT	A	GP	Anchorage	200	21 G / J	12.0			86,286	3,541	0	50,252	140,079	
25-0599	19098	Engineer/Architect I	FT	A	GP	Anchorage	200	22 C	12.0			80,184	3,291	0	48,006	131,481	
25-0605	19103	Matlab Tech Sub Journey II	PT	A	LL	Anchorage	2AA	57 B / C	9.5			32,627	0	4,378	28,177	65,182	
25-0612	19107	Survey Sub Journey II	PT	A	LL	Anchorage	2AA	56 D / E	11.0			42,310	0	4,938	34,246	81,494	
25-0616	19109	Engineer/Architect III	FT	A	SS	Anchorage	200	25 N / O	12.0			147,126	0	0	72,115	219,241	

Note: If a position is split, an asterisk (\*) will appear in the Split/Count column. If the split position is also counted in the component, two asterisks (\*\*) will appear in this column. [No valid job title] appearing in the Job Class Title indicates that the PCN has an invalid class code or invalid range for the class code effective date of this scenario.

## Personal Services Expenditure Detail (1445)

### Department of Transportation/Public Facilities

**Scenario:** FY2020 Governor Amended (15636)

**Component:** Central Design and Engineering Services (2298)

**RDU:** Design, Engineering and Construction (526)

Status	Tracking PCN ID	Job Class Title	Time Status	Retire Code	Barg Unit	Location	Salary Sched	Range / Steps	Comp Months	Split / Count	Annual Salaries	COLA	Premium Pay	Annual Benefits	Total Costs	UGF Amount
25-0617	19110	Engineer/Architect II	FT	A	GP	Anchorage	200	23 L	12.0		109,548	4,496	0	58,815	172,859	
25-0619	19112	Engineer/Architect I	FT	A	GP	Anchorage	200	22 C	12.0		80,184	3,291	0	48,006	131,481	
25-0620	19113	Engineer/Architect I	FT	A	GP	Anchorage	200	22 N	12.0		108,876	4,469	0	58,568	171,913	
25-0621	19114	Environ Impc Analysis Mgr I	FT	A	SS	Anchorage	200	21 M	12.0		105,877	0	0	57,804	163,681	
25-0623	19116	Engineer/Architect III	FT	A	SS	Anchorage	200	25 K / L	12.0		132,431	0	0	67,578	200,009	
25-0626	19118	Engineering Assistant III	FT	A	GP	Anchorage	200	21 D / E	12.0		79,980	3,651	8,968	51,232	143,831	
25-0627	19119	Tech Eng I / Architect I	FT	A	SS	Anchorage	200	24 P / Q	12.0		158,937	0	0	75,739	234,676	
25-0628	19120	Engineering Assistant III	FT	A	GP	Anchorage	200	21 N / O	12.0		103,596	4,252	0	56,624	164,472	
25-0629	19121	Engineering Assistant III	FT	A	GP	Anchorage	200	21 D / E	12.0		79,980	3,283	0	47,931	131,194	
25-0631	19123	Engineer/Architect I	FT	A	GP	Anchorage	200	22 M / N	12.0		106,666	4,378	0	57,754	168,798	
25-0632	19124	Land Surveyor II	FT	A	SS	Anchorage	200	22 O	12.0		121,919	0	0	63,709	185,628	
25-0634	19126	Engineering Assistant III	FT	A	GP	Anchorage	200	21 D / E	12.0		79,470	3,262	0	47,743	130,475	
25-0635	19127	Engineering Assistant II	FT	A	GP	Anchorage	200	19 A / B	12.0		63,429	2,894	7,087	44,447	117,857	
25-0636	19128	Engineer/Architect III	FT	A	SS	Anchorage	200	25 C / D	12.0		109,461	0	0	59,123	168,584	
25-0638	19129	Engineering Assistant III	FT	A	GP	Anchorage	200	21 F / G	12.0		84,806	3,481	0	49,707	137,994	
25-0640	19131	Engineering Assistant III	FT	A	GP	Anchorage	200	21 D / E	12.0		78,450	3,588	8,968	50,669	141,675	
25-0643	19134	Engineering Assistant III	FT	A	GP	Anchorage	200	21 G	12.0		85,836	3,523	0	50,087	139,446	
25-0644	19135	Engineering Assistant II	FT	A	GP	Anchorage	200	19 J / K	12.0		80,346	3,298	0	48,066	131,710	
25-0646	19136	Engineering Assistant II	FT	A	GP	Anchorage	200	19 L	12.0		83,280	3,418	0	49,146	135,844	
25-0648	19137	Engineering Assistant III	FT	A	GP	Anchorage	200	21 A / B	12.0		72,768	4,021	25,191	54,549	156,529	
25-0649	19138	Engineering Assistant III	FT	A	GP	Anchorage	200	21 M	12.0		98,913	4,060	0	54,900	157,873	
25-0651	19140	Engineer/Architect I	FT	A	GP	Anchorage	200	22 C / D	12.0		81,152	3,331	0	48,362	132,845	
25-0652	19141	Engineering Assistant III	FT	A	GP	Anchorage	200	21 E / F	12.0		81,273	3,336	0	48,407	133,016	
25-0655	19144	Engineering Assistant II	FT	A	GP	Anchorage	200	19 F / G	12.0		73,693	3,025	0	45,617	122,335	
25-0656	19145	Engineer/Architect I	FT	A	GP	Anchorage	200	22 J / K	12.0		96,703	3,969	0	54,087	154,759	
25-0657	19146	Engineer/Architect I	FT	A	GP	Anchorage	200	22 F / G	12.0		91,370	3,750	0	52,124	147,244	
25-0659	19147	Engineering Asst I	FT	A	GP	Anchorage	200	17 A / B	12.0		55,129	2,263	0	38,783	96,175	
25-0661	19149	Engineering Assistant III	FT	A	GP	Anchorage	200	21 K	12.0		92,340	3,790	0	52,481	148,611	
25-0662	19150	Engineering Assistant II	FT	A	GP	Anchorage	200	19 B / C	12.0		65,354	2,682	0	42,547	110,583	

Note: If a position is split, an asterisk (\*) will appear in the Split/Count column. If the split position is also counted in the component, two asterisks (\*\*) will appear in this column.  
 [No valid job title] appearing in the Job Class Title indicates that the PCN has an invalid class code or invalid range for the class code effective date of this scenario.

## Personal Services Expenditure Detail (1445)

### Department of Transportation/Public Facilities

**Scenario:** FY2020 Governor Amended (15636)

**Component:** Central Design and Engineering Services (2298)

**RDU:** Design, Engineering and Construction (526)

Status	PCN	Tracking ID	Job Class Title	Time Status	Retire Code	Barg Unit	Location	Salary Sched	Range / Steps	Comp Months	Split / Count	Annual Salaries	COLA	Premium Pay	Annual Benefits	Total Costs	UGF Amount
25-0663	19151	Environ Impact Analyst III	FT	A	GP	Anchorage	200	19 B / C	12.0	64,829	2,661	0	42,354	109,844			
25-0665	19152	Engineering Assistant III	FT	A	GP	Anchorage	200	21 F / G	12.0	85,035	3,490	0	49,792	138,317			
25-0667	19154	Drafting Technician III	FT	A	GP	Anchorage	200	15 J / K	12.0	60,729	2,493	0	40,845	104,067			
25-0670	19157	Engineer/Architect III	FT	A	SS	Anchorage	200	25 K	12.0	129,456	0	0	66,483	195,939			
25-0671	19158	Engineer/Architect I	FT	A	GP	Anchorage	200	22 G	12.0	91,980	3,775	0	52,348	148,103			
25-0672	19159	Engineer/Architect II	FT	A	SS	Anchorage	200	23 F / J	12.0	107,770	0	0	58,500	166,270			
25-0675	19162	Engineer/Architect I	FT	A	GP	Anchorage	200	22 G	12.0	91,980	3,775	0	52,348	148,103			
25-0676	19163	Engineer/Architect I	FT	A	GP	Anchorage	200	22 A / B	12.0	76,935	3,158	0	46,810	126,903			
25-0683	19167	Engineering Assistant III	FT	A	GP	Anchorage	200	21 D / E	12.0	77,940	3,199	0	47,180	128,319			
25-0685	19169	Engineering Assistant III	FT	A	GG	Anchorage	200	21 P / Q	12.0	112,806	4,630	0	60,014	177,450			
25-0687	19171	Engineer/Architect I	FT	A	GP	Anchorage	200	22 G	12.0	91,980	3,775	0	52,348	148,103			
25-0689	19173	Engineering Assistant II	FT	A	GP	Anchorage	200	19 C / D	12.0	66,738	2,739	0	43,057	112,534			
25-0695	19177	Right of Way Agent III	FT	A	GP	Anchorage	200	18 C / D	12.0	61,591	2,528	0	41,162	105,281			
25-0702	19181	Drafting Technician III	FT	A	GP	Anchorage	200	15 E / F	12.0	54,962	2,256	0	38,722	95,940			
25-0705	19183	Drafting Technician III	FT	A	GP	Anchorage	200	15 J	12.0	59,676	2,449	0	40,457	102,582			
25-0706	19184	Drafting Technician III	FT	A	GP	Anchorage	200	15 G	12.0	57,336	2,353	0	39,596	99,285			
25-0712	19186	Right of Way Agent II	FT	A	GP	Anchorage	200	16 C / D	12.0	55,296	2,270	0	38,845	96,411			
25-0715	19188	Right of Way Agent I	FT	A	GP	Anchorage	200	14 B / C	12.0	45,123	1,852	0	35,100	82,075			
25-0717	19189	Engineering Assistant III	FT	A	GP	Anchorage	200	21 F / G	12.0	85,836	3,523	0	50,087	139,446			
25-0719	19191	Right of Way Agent I	FT	A	GP	Anchorage	200	14 A / B	12.0	44,685	1,834	0	34,939	81,458			
25-0721	19193	Matlab Tech Journey	PT	A	LL	Anchorage	2AA	53 M / N	9.0	52,366	0	12,183	37,550	102,099			
25-0724	19195	Engineering Geologist II	FT	A	GP	Anchorage	200	18 A	12.0	57,336	2,625	6,615	42,031	108,607			
25-0725	19196	Regional Engineering Geologist	FT	A	SS	Anchorage	200	22 N / O	12.0	121,120	0	0	63,415	184,535			
25-0726	19197	Survey Journey	PT	A	LL	Anchorage	2AA	54 A	11.0	42,244	0	9,972	36,075	88,291			
25-0728	19198	Survey Sub Journey II	PT	A	LL	Anchorage	2AA	56 A	11.0	37,745	0	4,455	32,388	74,588			
25-0733	19201	Engineering Assistant III	FT	A	GP	Anchorage	200	21 B / C	12.0	74,526	3,403	8,397	49,014	135,340			
25-0736	19204	Matlab Tech Foreman	PT	A	LL	Anchorage	2AA	51 N	9.0	59,534	0	8,588	38,865	106,987			
25-0738	19206	Engineering Assistant II	FT	A	GP	Anchorage	200	19 G	12.0	74,988	3,078	0	46,093	124,159			
25-0741	19209	Matlab Tech Sub Journey II	FT	A	LL	Anchorage	2AA	57 D / E	12.0	43,529	0	0	34,409	77,938			

Note: If a position is split, an asterisk (\*) will appear in the Split/Count column. If the split position is also counted in the component, two asterisks (\*\*) will appear in this column.  
 [No valid job title] appearing in the Job Class Title indicates that the PCN has an invalid class code or invalid range for the class code effective date of this scenario.

## Personal Services Expenditure Detail (1445)

### Department of Transportation/Public Facilities

**Scenario:** FY2020 Governor Amended (15636)

**Component:** Central Design and Engineering Services (2298)

**RDU:** Design, Engineering and Construction (526)

Status	PCN	Tracking ID	Job Class Title	Time Status	Retire Code	Barg Unit	Location	Salary Sched	Range / Steps	Comp Months	Split / Count	Annual Salaries	COLA	Premium Pay	Annual Benefits	Total Costs	UGF Amount
25-0743	19211	Matlab Tech Sub Journey II	PT	A	LL	Anchorage	2AA	57 D	9.0	32,504	0	4,689	27,480	64,673			
25-0747	19212	Engineering Assistant III	FT	A	GP	Anchorage	200	21 E / F	12.0	82,726	3,775	9,252	52,347	148,100			
25-0751	19214	Environ Impact Analyst III	FT	A	GP	Anchorage	200	19 K	12.0	80,664	3,311	0	48,183	132,158			
25-0752	19215	Environ Impact Analyst III	FT	A	GP	Anchorage	200	19 A	12.0	61,416	2,521	0	41,098	105,035			
25-0753	19216	Environ Impact Analyst III	FT	A	GP	Anchorage	200	19 E / F	12.0	71,384	2,930	0	44,767	119,081			
25-0755	19218	Environ Impact Analyst III	FT	A	GP	Anchorage	200	19 E / F	12.0	71,277	2,925	0	44,727	118,929			
25-0756	19219	Environ Impact Analyst III	FT	A	GP	Anchorage	200	19 F / G	12.0	73,323	3,009	0	45,481	121,813			
25-0762	19225	Environ Impact Analyst II	FT	A	GP	Anchorage	200	17 C / D	12.0	58,866	2,416	0	40,159	101,441			
25-0766	19228	Engineering Assistant II	FT	A	GP	Anchorage	200	19 B / C	12.0	65,529	2,690	0	42,612	110,831			
25-0770	19230	Engineering Assistant II	FT	A	GP	Anchorage	200	19 C / D	12.0	67,758	2,781	0	43,432	113,971			
25-0771	19231	Engineer/Architect IV	FT	A	GP	Anchorage	200	26 C	12.0	101,952	4,184	0	56,019	162,155			
25-0791	19239	Survey Journey	PT	A	LL	Anchorage	2AA	54 E / F	11.0	49,171	0	9,536	38,464	97,171			
25-0792	19240	Survey Lead	PT	A	LL	Anchorage	2AA	53 M / N	11.0	63,204	0	12,183	44,604	119,991			
25-0797	19244	Engineer/Architect III	FT	A	SS	Anchorage	200	25 O	12.0	150,010	0	0	73,000	223,010			
25-0800	19246	Engineer/Architect I	FT	A	GP	Anchorage	200	22 D / E	12.0	84,462	3,467	0	49,581	137,510			
25-0802	19248	Engineering Assistant II	FT	A	GP	Anchorage	200	19 E / F	12.0	70,319	2,886	0	44,375	117,580			
25-0805	19251	Engineering Asst I	FT	A	GP	Anchorage	200	17 A / B	12.0	55,129	2,515	6,149	41,047	104,840			
25-0808	19253	Engineering Asst I	FT	A	GP	Anchorage	200	17 A / B	12.0	55,129	2,515	6,149	41,047	104,840			
25-0810	19255	Engineering Assistant III	FT	A	GP	Anchorage	200	21 E / F	12.0	82,846	3,400	0	48,986	135,232			
25-0819	19261	Engineering Assistant II	FT	A	GP	Anchorage	200	19 A / B	12.0	63,341	2,600	0	41,806	107,747			
25-0820	19262	Engineer/Architect I	FT	A	GP	Anchorage	200	22 E / F	12.0	86,640	3,556	0	50,383	140,579			
25-0821	19263	Engineering Assistant III	FT	A	GP	Anchorage	200	21 C / D	12.0	75,790	3,466	8,653	49,574	137,483			
25-0886	19295	Engineer/Architect I	FT	A	GP	Anchorage	200	22 G	12.0	91,980	3,775	0	52,348	148,103			
25-0887	19296	Survey Lead	PT	A	LL	Anchorage	2AA	53 F / J	11.0	53,563	0	10,518	40,442	104,523			
25-0889	19297	Survey Lead	PT	A	LL	Anchorage	2AA	53 M	11.0	61,936	0	12,183	44,137	118,256			
25-0893	19298	Matlab Tech Sub Journey II	PT	A	LL	Anchorage	2AA	57 C	9.0	31,412	0	4,531	27,020	62,963			
25-0925	19308	Engineering Assistant II	FT	A	GP	Anchorage	200	19 A	12.0	61,416	2,812	7,087	43,706	115,021			
25-0927	19309	Tech Eng I / Architect I	FT	A	GP	Anchorage	200	24 N	12.0	126,405	5,188	0	65,020	196,613			
25-0929	19311	Land Surveyor I	FT	A	GP	Anchorage	200	21 D / E	12.0	79,980	3,283	0	47,931	131,194			

Note: If a position is split, an asterisk (\*) will appear in the Split/Count column. If the split position is also counted in the component, two asterisks (\*\*) will appear in this column. [No valid job title] appearing in the Job Class Title indicates that the PCN has an invalid class code or invalid range for the class code effective date of this scenario.

## Personal Services Expenditure Detail (1445)

### Department of Transportation/Public Facilities

**Scenario:** FY2020 Governor Amended (15636)

**Component:** Central Design and Engineering Services (2298)

**RDU:** Design, Engineering and Construction (526)

Status	PCN	Tracking ID	Job Class Title	Time Status	Retire Code	Barg Unit	Location	Salary Sched	Range / Steps	Comp Months	Split / Count	Annual Salaries	COLA	Premium Pay	Annual Benefits	Total Costs	UGF Amount
25-0933	19312	Office Assistant II	FT	A	GP	Anchorage	200	10 B / C	12.0	35,571	1,460	0	31,584	68,615			
25-0954	19323	Survey Journey	PT	A	LL	Anchorage	2AA	54 K / L	11.0	54,557	0	10,623	40,847	106,027			
25-0958	19326	Environ Impact Analyst III	FT	A	GP	Anchorage	200	19 B / C	12.0	64,741	2,657	0	42,321	109,719			
25-0960	19328	Engineer/Architect III	FT	A	SS	Anchorage	200	25 K	12.0	129,456	0	0	66,483	195,939			
25-0962	19330	Engineer/Architect I	FT	A	GP	Anchorage	200	22 C	12.0	80,184	3,291	0	48,006	131,481			
25-0963	19331	Tech Eng I / Architect I	FT	A	GP	Anchorage	200	24 S	12.0	151,951	5,957	0	73,256	231,164			
25-0964	19332	Engineer/Architect III	FT	A	SS	Anchorage	200	25 O / P	12.0	151,838	0	0	73,561	225,399			
25-0967	19333	Engineer/Architect III	FT	A	SS	Anchorage	200	25 N / O	12.0	146,343	0	0	71,875	218,218			
25-1504	19778	Matlab Tech Sub Journey II	PT	A	LL	Anchorage	2AA	57 B / C	6.0	20,411	0	0	16,706	37,117			
25-1517	19787	Matlab Tech Sub Journey IV	FT	A	LL	Anchorage	2AA	54 F	12.0	54,735	0	0	38,534	93,269			
25-1649	19881	Matlab Tech Sub Journey IV	PT	A	LL	Anchorage	2AA	54 F	6.0	27,368	0	5,922	21,447	54,737			
25-2301	20373	Right of Way Agent IV	FT	A	SS	Anchorage	200	20 C / D	12.0	78,121	0	0	47,587	125,708			
25-3408	21146	Engineering Assistant II	FT	A	GP	Anchorage	200	19 C / D	12.0	67,758	2,781	0	43,432	113,971			
25-3438	21175	Engineering Asst I	FT	A	GP	Anchorage	200	17 B / C	12.0	55,636	2,545	6,381	41,319	105,881			
25-3439	21176	Engineering Assistant III	FT	A	GP	Anchorage	200	21 B / C	12.0	73,786	3,028	0	45,651	122,465			
25-3440	21177	Engineering Assistant III	FT	A	GP	Anchorage	200	21 F / G	12.0	84,577	3,865	9,587	53,152	151,181			
25-3441	21178	Engineer/Architect I	FT	A	GP	Anchorage	200	22 F / G	12.0	91,492	3,755	0	52,169	147,416			
25-3442	21179	Engineer/Architect I	FT	A	GP	Anchorage	200	22 B / C	12.0	78,144	3,207	0	47,255	128,606			
25-3443	21180	Engineering Assistant III	FT	A	GP	Anchorage	200	21 M / N	12.0	99,047	4,065	0	54,950	158,062			
25-3444	21181	Engineering Assistant II	FT	A	GP	Anchorage	200	19 A	12.0	61,416	2,860	8,268	44,141	116,685			
25-3445	21182	Engineering Assistant II	FT	A	GP	Anchorage	200	19 K / L	12.0	81,863	3,742	9,308	52,050	146,963			
25-3446	21183	Engineering Assistant II	FT	A	GP	Anchorage	200	19 E / F	12.0	72,023	2,956	0	45,002	119,981			
25-3447	21184	Right of Way Agent III	FT	A	GG	Anchorage	200	18 N	12.0	83,869	3,442	0	49,363	136,674			
25-3448	21185	Land Surveyor I	FT	A	GP	Anchorage	200	21 L	12.0	95,340	3,913	0	53,585	152,838			
25-3459	21196	Engineering Asst I	FT	A	GP	Anchorage	200	17 A / B	12.0	55,046	2,512	6,149	41,016	104,723			
25-3498	21229	Environ Impact Analyst I	FT	A	GP	Anchorage	200	15 A / B	12.0	47,904	2,149	4,453	37,763	92,269			
25-3553	21277	Engineer/Architect II	FT	A	SS	Anchorage	200	23 J	12.0	109,200	0	0	59,027	168,227			
25-3559	21283	Engineer/Architect I	FT	A	GP	Anchorage	200	22 J	12.0	95,796	3,932	0	53,753	153,481			
25-3560	21284	Engineer/Architect II	FT	A	GG	Anchorage	200	23 L / M	12.0	111,627	4,582	0	59,580	175,789			

Note: If a position is split, an asterisk (\*) will appear in the Split/Count column. If the split position is also counted in the component, two asterisks (\*\*) will appear in this column. [No valid job title] appearing in the Job Class Title indicates that the PCN has an invalid class code or invalid range for the class code effective date of this scenario.



**Personal Services Expenditure Detail (1445)**

**Department of Transportation/Public Facilities**

**Scenario:** FY2020 Governor Amended (15636)  
**Component:** Central Design and Engineering Services (2298)  
**RDU:** Design, Engineering and Construction (526)

Status	PCN	Tracking ID	Job Class Title	Time Status	Retire Code	Barg Unit	Location	Salary Sched	Range / Steps	Comp Months	Split / Count	Annual Salaries	COLA	Premium Pay	Annual Benefits	Total Costs	UGF Amount
	25-3587	21311	Environ Impact Analyst I	FT	A	GP	Anchorage	200	15 A / B	12.0		48,048	1,972	0	36,177	86,197	
	25-3588	21312	Environ Impact Analyst I	FT	A	GP	Anchorage	200	15 A / B	12.0		48,048	1,972	0	36,177	86,197	
	25-3683	21400	Right of Way Agent II	FT	A	GP	Anchorage	200	16 E / F	12.0		58,696	2,409	0	40,096	101,201	
	25-3684	21401	Right of Way Agent II	FT	A	GP	Anchorage	200	16 E / F	12.0		57,421	2,357	0	39,627	99,405	
	25-3736	21436	Engineer/Architect I	FT	A	GP	Anchorage	200	22 L / M	12.0		102,397	4,203	0	56,183	162,783	
	25-IN1215	21467	College Intern II	NP	N	EE	Anchorage	N00	9 A	9.0		25,140	0	0	3,160	28,300	
	25-IN1436	21478	College Intern IV	NP	N	EE	Anchorage	N00	12 A	6.0		20,056	0	0	2,521	22,577	
	25-IN1437	21479	College Intern IV	NP	N	EE	Anchorage	N00	12 A	9.5		31,755	0	0	3,992	35,747	
	25-IN1438	21481	College Intern II	NP	N	EE	Anchorage	N00	9 A	9.5		26,537	0	0	3,336	29,873	
	25-IN1441	21466	College Intern II	NP	N	EE	Anchorage	N00	9 A	6.0		16,760	0	0	2,107	18,867	
	25-IN1503	30123	College Intern III	NP	N	EE	Anchorage	N00	10 A	9.0		26,691	0	0	3,355	30,046	

	Total Positions	New	Deleted
<b>Full Time Positions:</b>	163	0	0
<b>Part Time Positions:</b>	16	0	0
<b>Non Permanent Positions:</b>	6	0	0
<b>Positions in Component:</b>	185	0	0
<b>Total Component Months:</b>	2159.5		

<b>Total Salary Costs:</b>	14,596,136
<b>Total COLA:</b>	408,794
<b>Total Premium Pay:</b>	310,931
<b>Total Benefits:</b>	8,695,119
<b>Total Pre-Vacancy:</b>	24,010,980
<b>Minus Vacancy Adjustment of 5.10%:</b>	(1,224,680)
<b>Total Post-Vacancy:</b>	22,786,300
<b>Plus Lump Sum Premium Pay:</b>	0
<b>Personal Services Line 100:</b>	22,786,300

PCN Funding Sources:	Pre-Vacancy	Post-Vacancy	Percent
1004 General Fund Receipts	11,191	10,620	0.05%
1005 General Fund/Program Receipts	453,973	430,818	1.89%
1007 Interagency Receipts	39,601	37,581	0.16%
1039 U/A Indirect Cost Recovery	4,672,882	4,434,542	19.46%

Note: If a position is split, an asterisk (\*) will appear in the Split/Count column. If the split position is also counted in the component, two asterisks (\*\*) will appear in this column. [No valid job title] appearing in the Job Class Title indicates that the PCN has an invalid class code or invalid range for the class code effective date of this scenario.

**Personal Services Expenditure Detail (1445)**

**Department of Transportation/Public Facilities**

**Scenario:** FY2020 Governor Amended (15636)

**Component:** Central Design and Engineering Services (2298)

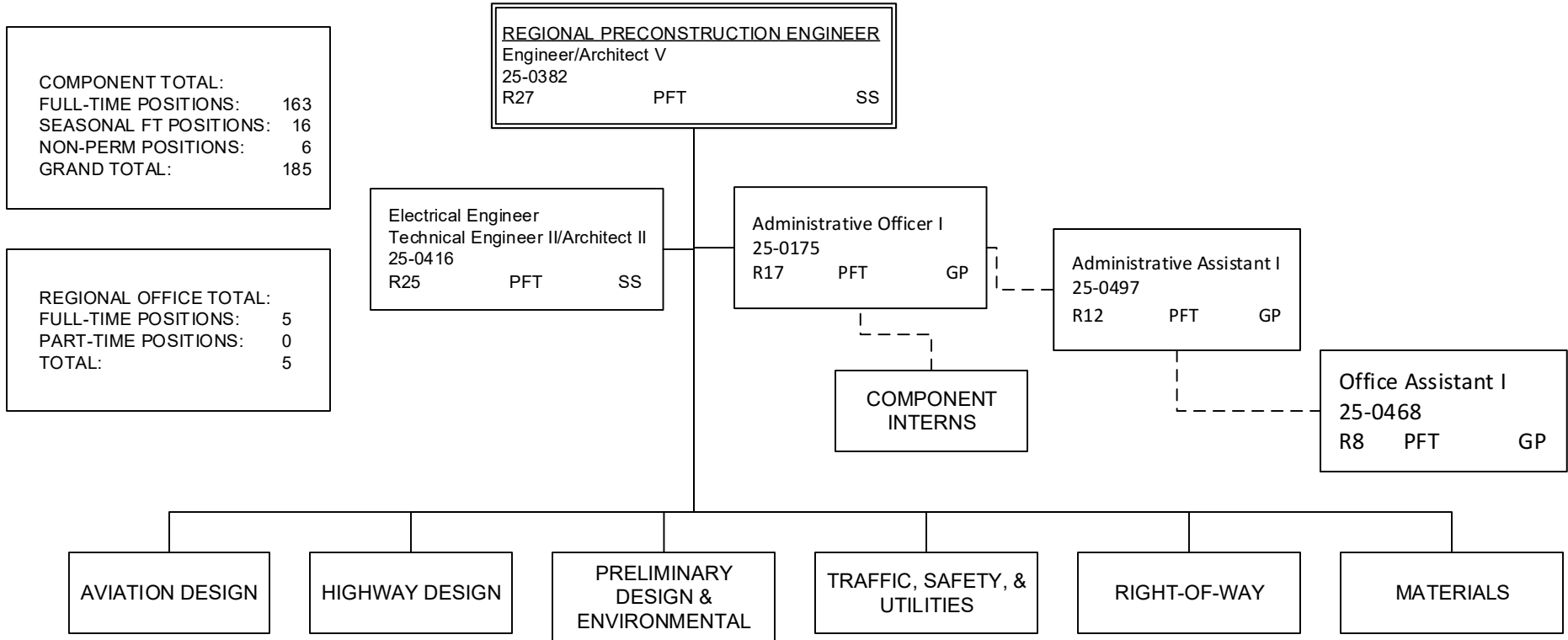
**RDU:** Design, Engineering and Construction (526)

<b>PCN Funding Sources:</b>	<b>Pre-Vacancy</b>	<b>Post-Vacancy</b>	<b>Percent</b>
1061 Capital Improvement Project Receipts	18,833,334	17,872,740	78.44%
<b>Total PCN Funding:</b>	<b>24,010,980</b>	<b>22,786,300</b>	<b>100.00%</b>

Note: If a position is split, an asterisk (\*) will appear in the Split/Count column. If the split position is also counted in the component, two asterisks (\*\*) will appear in this column.  
[No valid job title] appearing in the Job Class Title indicates that the PCN has an invalid class code or invalid range for the class code effective date of this scenario.

DEPARTMENT OF TRANSPORTATION AND PUBLIC FACILITIES  
 RDU: DESIGN, ENGINEERING AND CONSTRUCTION  
 COMPONENT: CENTRAL DESIGN AND ENGINEERING SERVICES (2298)  
 FY2020 GOVERNOR AMENDED BUDGET

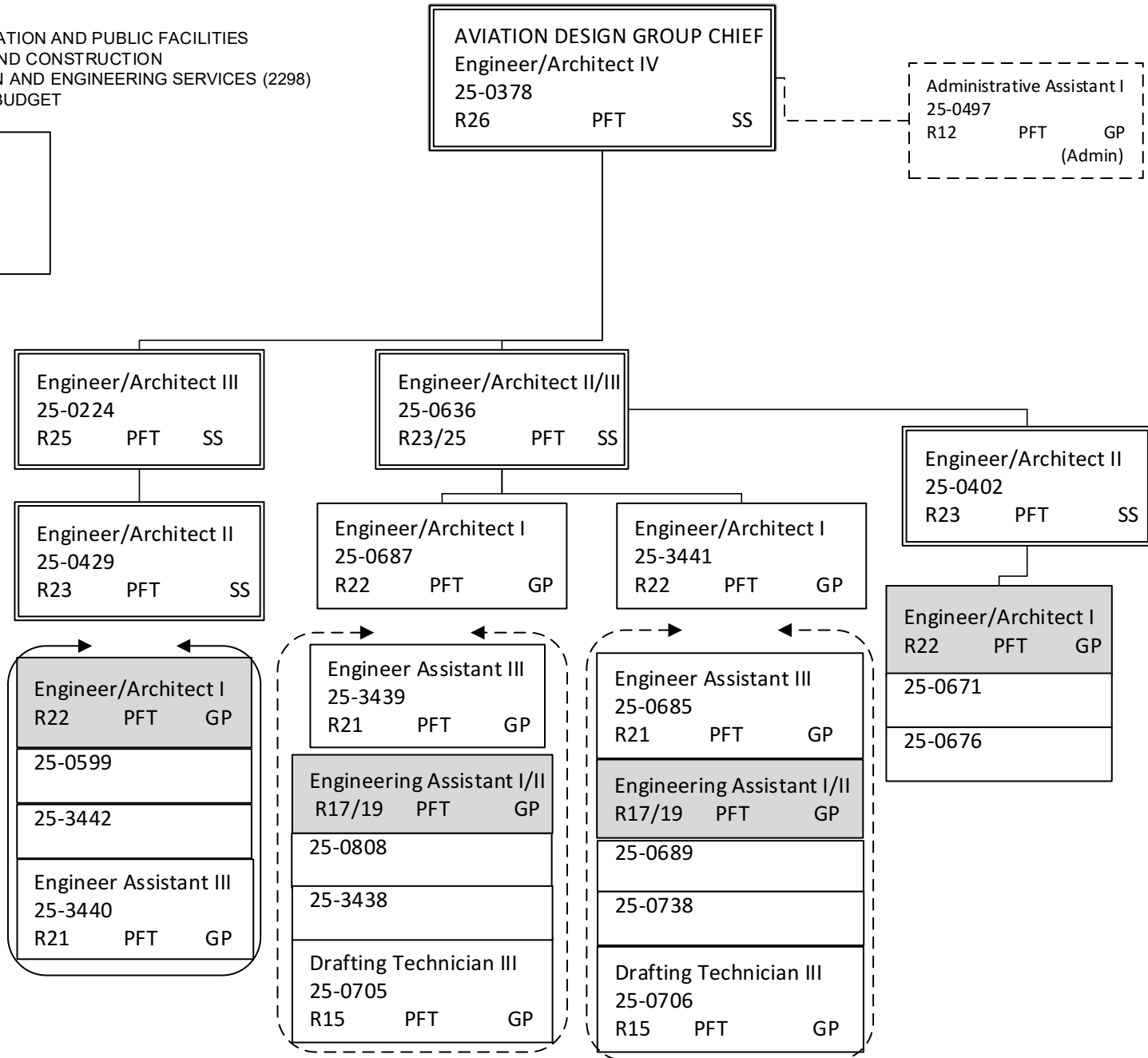
Note: All positions are located in Anchorage.



Note: All positions are located in Anchorage

DEPARTMENT OF TRANSPORTATION AND PUBLIC FACILITIES  
 RDU: DESIGN, ENGINEERING AND CONSTRUCTION  
 COMPONENT: CENTRAL DESIGN AND ENGINEERING SERVICES (2298)  
 FY2020 GOVERNOR AMENDED BUDGET

AVIATION DESIGN TOTAL:  
 FULL-TIME POSITIONS: 20  
 PART-TIME POSITIONS: 0  
 TOTAL 20



Note: All positions are located in Anchorage

HIGHWAY DESIGN TOTAL:	
FULL-TIME POSITIONS:	29
PART-TIME POSITIONS:	0
TOTAL	29

HIGHWAY DESIGN GROUP CHIEF		
Engineer/Architect IV		
25-0389		
R26	PFT	SS

Administrative Assistant I		
25-0497		
R12	PFT	GP (Admin)

Engineer/Architect II/III		
25-0404		
R23/25	PFT	SS

Engineer/Architect III		
25-0616		
R25	PFT	SS

Engineer/Architect III		
25-0797		
R25	PFT	SS

Engineer/Architect II/III		
25-0960		
R23/25	PFT	SS

Engineering Asst.III / Eng Associate / Eng./Arch. I		
25-0820		
R21/22	PFT	GP

Engineer/Architect II		
25-3560		
R23	PFT	GP
Engineer/Architect I		
25-0886		
R22	PFT	GP
Engineering Assistant III		
R21 PFT GP		
25-0598		
25-0665		
Engineering Assistant II		
25-0819		
R19	PFT	GP
Engineering Assistant I/II		
25-0644		
R17/19	PFT	GP

Engineer/Architect II		
25-0617		
R23	PFT	GP
Engineer/Architect I		
25-0675		
R22	PFT	GP
Engineering Assistant III		
R21 PFT GP		
25-0515		
25-0640		
Engineering Assistant I/II		
R17/19 PFT GP		
25-0646		
25-0802		
Drafting Technician III		
25-0667		
R15	PFT	GP

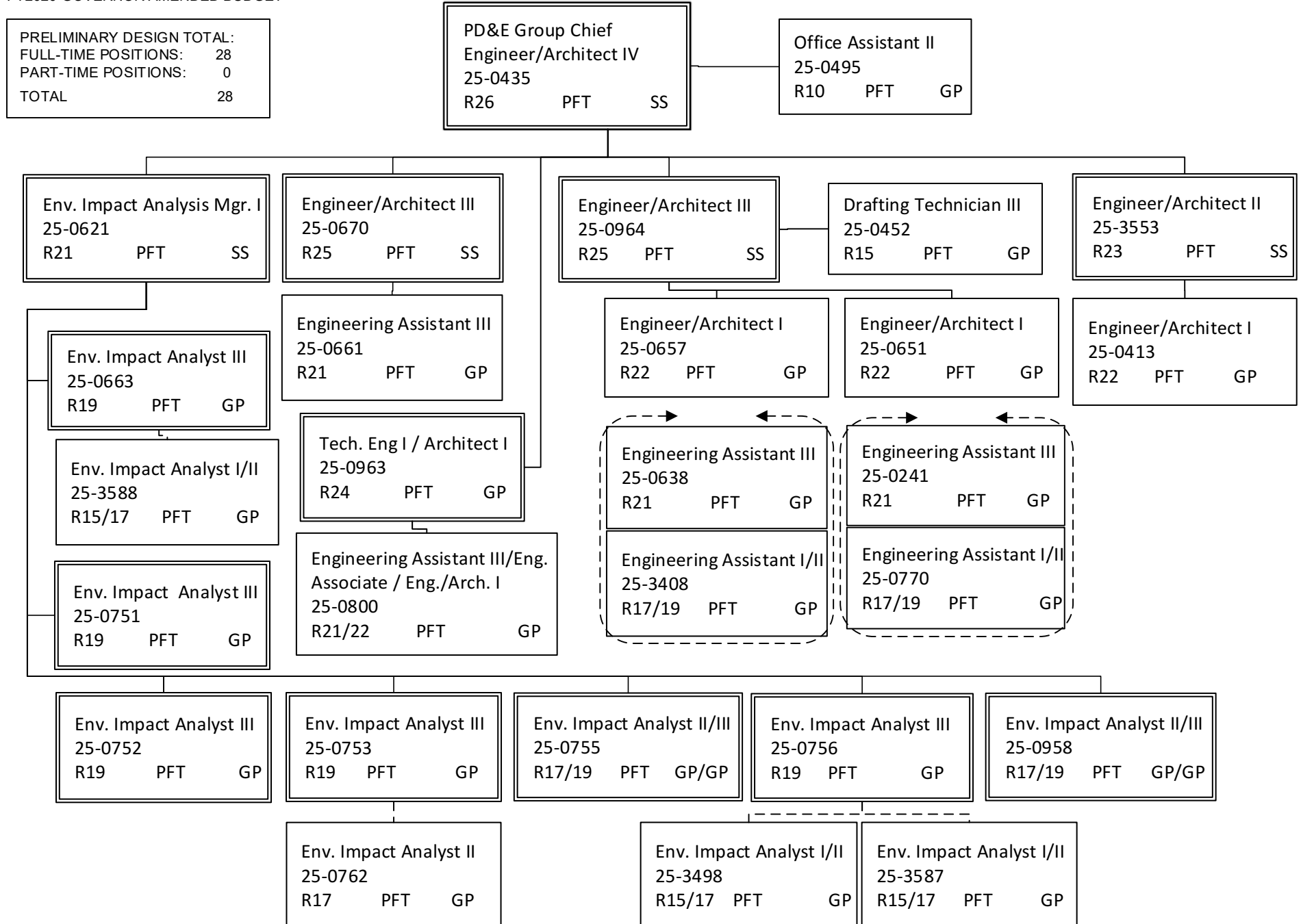
Consultant Coordinator		
Engineer/Architect I		
R22 PFT GP		
25-0619		
25-0620		

Engineer/Architect III		
25-0967		
R25	PFT	SS

Engineer/Architect I		
25-0631		
R22	PFT	GP
Engineering Asst.III / Eng Associate / Eng./Arch. I		
25-0656		
R21/22	PFT	GP

Engineering Assistant III	Engineering Assistant I/II
R21 PFT GP	R17/19 PFT GP
25-0541	25-0655
25-0683	25-0662

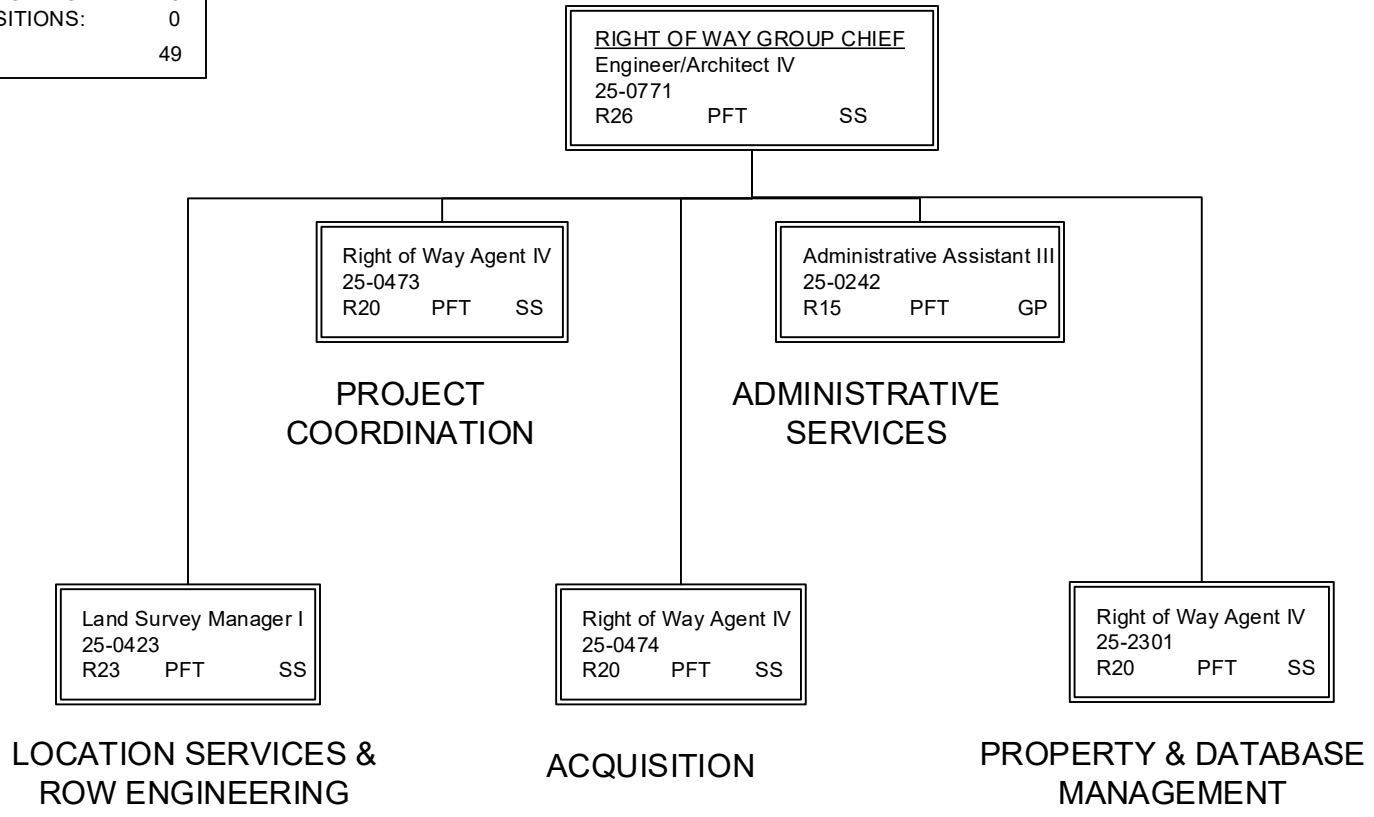
Drafting Technician III		
25-0487		
R15	PFT	GP



DEPARTMENT OF TRANSPORTATION AND PUBLIC FACILITIES  
 RDU: DESIGN, ENGINEERING AND CONSTRUCTION  
 COMPONENT: CENTRAL DESIGN AND ENGINEERING SERVICES (2298)  
 FY2020 GOVERNOR AMENDED BUDGET

Note: All positions are located in Anchorage.

RIGHT OF WAY TOTAL:	
FULL-TIME POSITIONS:	41
SEASONAL FT POSITIONS:	8
NON-PERM POSITIONS:	0
TOTAL	49

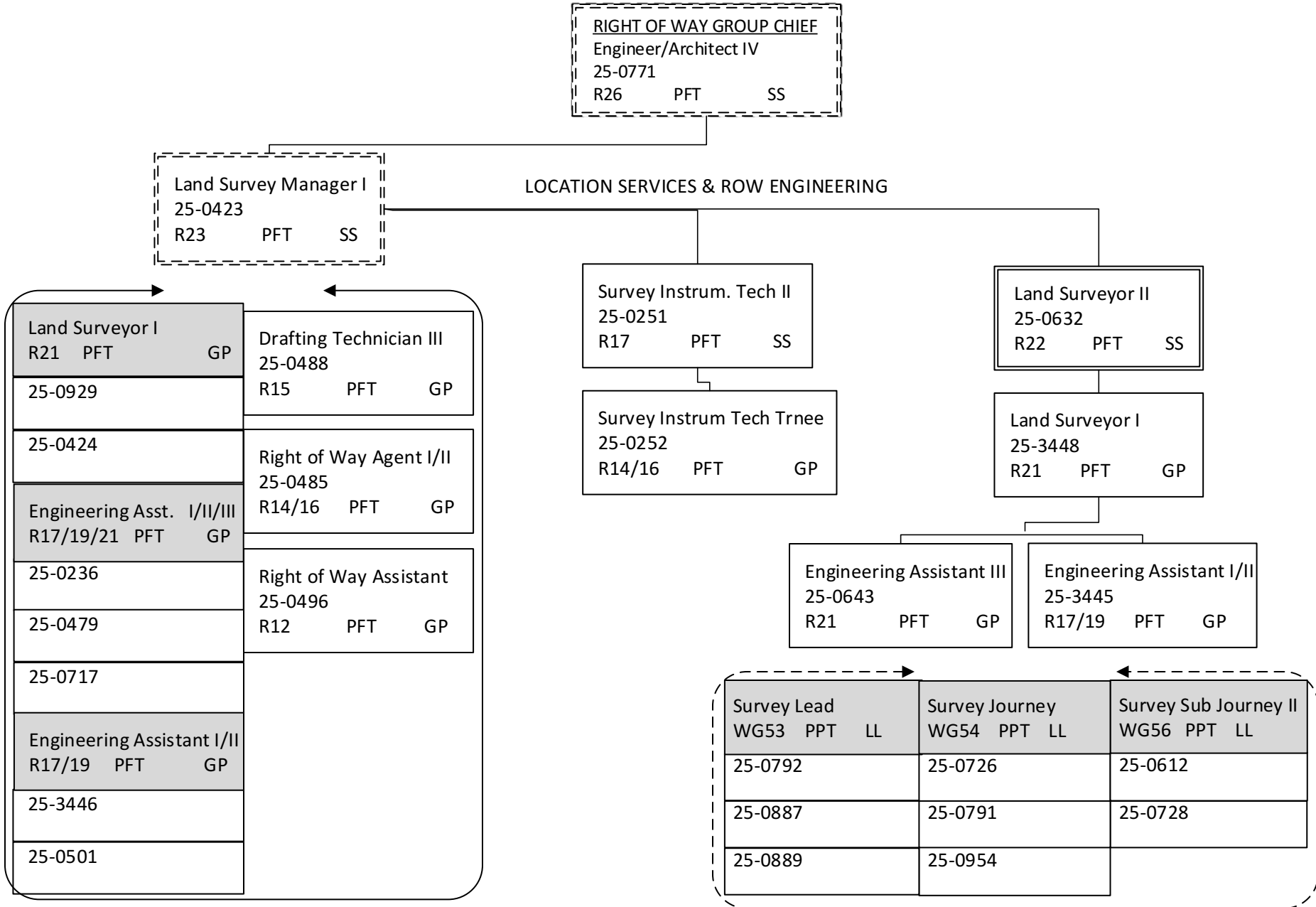


LOCATION SERVICES &  
ROW ENGINEERING

ACQUISITION

PROPERTY & DATABASE  
MANAGEMENT

Note: All positions are located in Anchorage





DEPARTMENT OF TRANSPORTATION AND PUBLIC FACILITIES  
 RDU: DESIGN, ENGINEERING AND CONSTRUCTION  
 COMPONENT: CENTRAL DESIGN AND ENGINEERING SERVICES (2298)  
 FY2020 GOVERNOR AMENDED BUDGET

**RIGHT OF WAY GROUP CHIEF**  
 Engineer/Architect IV  
 25-0771  
 R26 PFT SS

PROJECT COORDINATION

ACQUISITION

ADMINISTRATIVE SERVICES

PROPERTY & DATABASE MANAGEMENT

Right of Way Agent IV  
 25-0473  
 R20 PFT SS

Right of Way Agent IV  
 25-0474  
 R20 PFT SS

Administrative Asst. III  
 25-0242  
 R15 PFT GP

Right of Way Agent IV  
 25-2301  
 R20 PFT SS

Right of Way Agent III  
 R18 PFT GP  
 25-0433  
 25-0476  
 25-0480  
 Right of Way Agent II  
 R16 PFT GP  
 25-0499  
 25-0712  
 25-3683

Right of Way Agent III  
 R18 PFT GP  
 25-0421  
 25-0477  
 Right of Way Agent II/III  
 R16/18 PFT GP  
 25-0486  
 25-0695  
 Right of Way Agent I/II  
 25-0719  
 R14/16 PFT GP  
 Right of Way Agent I  
 25-0561  
 R14 PFT GP

Office Assistant II  
 25-0933  
 R10 PFT GP

Right of Way Agent III  
 25-3447  
 R18 PFT GP

Right of Way Agent II  
 R16 PFT GP  
 25-0427  
 25-0482  
 25-3684  
 Right of Way Agent I/II  
 25-0715  
 R14/16 PFT GP  
 Right of Way Assistant  
 25-0492  
 R12 PFT GP

DEPARTMENT OF TRANSPORTATION AND PUBLIC FACILITIES  
 RDU: DESIGN, ENGINEERING AND CONSTRUCTION  
 COMPONENT: CENTRAL DESIGN AND ENGINEERING SERVICES (2298)  
 FY2020 GOVERNOR AMENDED BUDGET

TRAFFIC, SAFETY, & UTILITIES TOTAL:	
FULL-TIME POSITIONS:	27
PART-TIME POSITIONS:	0
TOTAL	27

Traffic, Safety, & Utilities Group Chief  
 Engineer/Architect IV  
 25-0414  
 R26 PFT SS

Administrative Asst. I  
 25-0401  
 R12 PFT GP

UTILITY PERMITTING/UTILITY  
 ACCOMODATION & RELOCATION

TRAFFIC SAFETY

TRAFFIC DESIGN

Engineer/Architect III  
 25-0623  
 R25 PFT SS

Technical Engineer I/Architect I  
 25-0627  
 R24 PFT SS

Engineer/Architect II  
 25-0672  
 R23 PFT SS

Engineering Assistant III  
 25-0649  
 R21 PFT GP

EA III/ Eng. Assoc. / Eng./Arch. I  
 R21/22 PFT GP  
 25-0407  
 25-0652

Technical Engineer I/  
 Architect I  
 25-0927  
 R24 PFT GP  
 Engineer/Architect I  
 R22 PFT GP  
 25-0962  
 25-3736

Engineer/Architect I  
 25-3559  
 R22 PFT GP  
 Engineering Assistant III  
 R21 PFT GP  
 25-0628  
 25-0629  
 Engineering Asst. I/II/III  
 R17/19/21 PFT GP  
 25-0626  
 25-0821  
 Drafting Technician III  
 25-0702  
 R15 PFT GP

Engineering Assistant III  
 25-0648  
 R21 PFT GP

Engineering Asst II/III R19/21 PFT GP	Engineering Assistant I/II R17/19 PFT GP
25-0635	25-0475
25-0810	25-0531
25-0634	25-0805
	25-3444

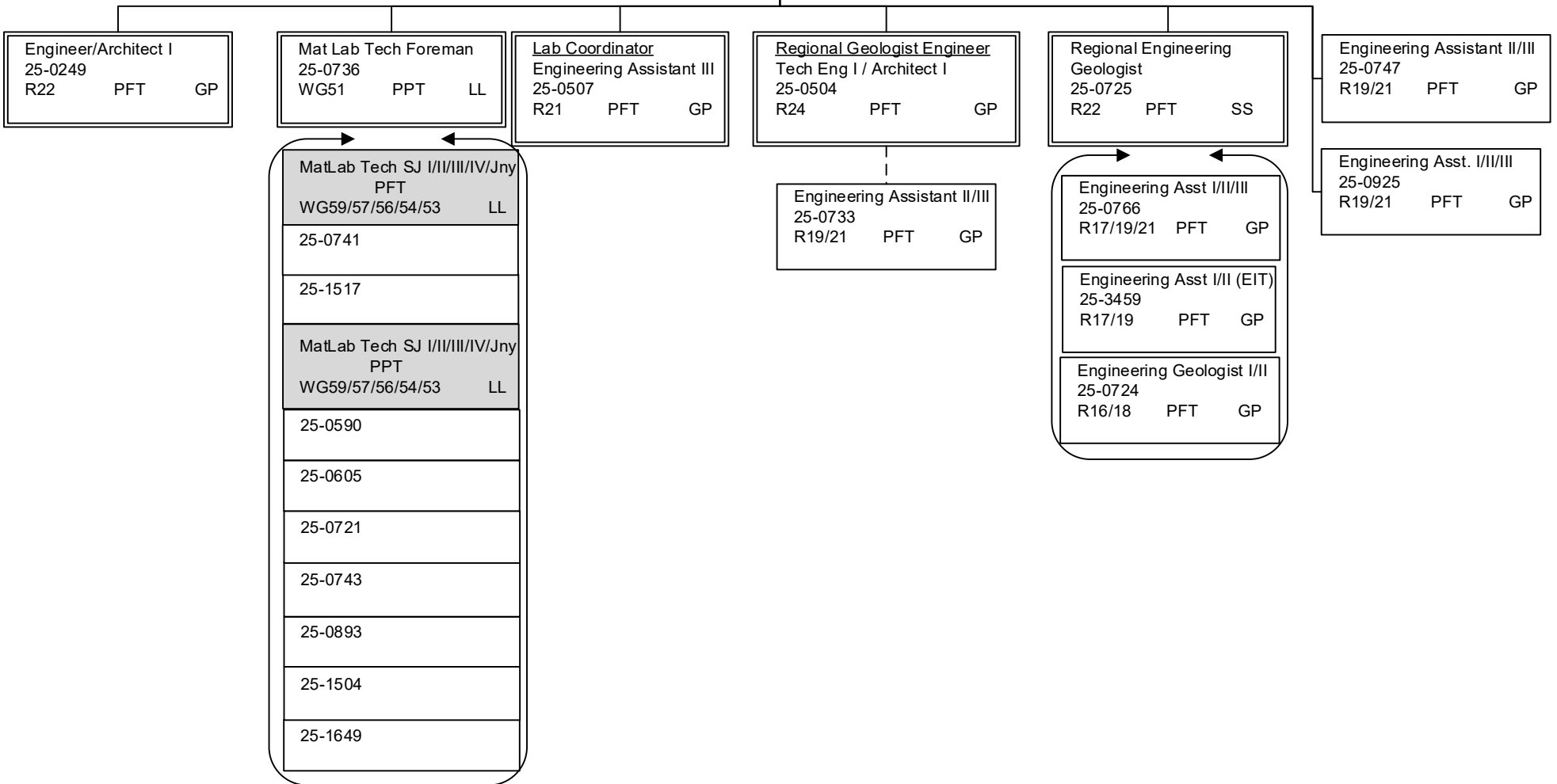
Engineering Assistant III  
 25-3443  
 R21 PFT GP  
 Engineering Assistant I/II  
 25-0659  
 R17/19 PFT GP

DEPARTMENT OF TRANSPORTATION AND PUBLIC FACILITIES  
 RDU: DESIGN, ENGINEERING AND CONSTRUCTION  
 COMPONENT: CENTRAL DESIGN AND ENGINEERING SERVICES (2298)  
 FY2020 GOVERNOR AMENDED BUDGET

**MATERIALS GROUP CHIEF**  
 Engineer/Architect IV  
 25-0387  
 R26 PFT SS

Administrative Assistant I  
 25-0497  
 R12 PFT GP  
 (Admin)

MATERIALS TOTAL:  
 FULL-TIME POSITIONS: 13  
 SEASONAL FT POSITIONS: 8  
 TOTAL 21



DEPARTMENT OF TRANSPORTATION AND PUBLIC FACILITIES  
 RDU: DESIGN, ENGINEERING AND CONSTRUCTION  
 COMPONENT: CENTRAL DESIGN AND ENGINEERING SERVICES (2298)  
 FY2020 GOVERNOR AMENDED BUDGET

Note: All positions are located in Anchorage.

YEAR ROUND COLLEGE INTERNS

NON-PERM TOTAL:	
FULL-TIME POSITIONS:	0
PART-TIME POSITIONS:	0
NON-PERM POSITIONS:	6
TOTAL	6

College Intern I/II (FLEX)		
25IN1215		
R8/9	NP	EE

College Intern I/II/III/IV (FLEX)	
R8/9/10/12	NP EE
25IN1436	25IN1441
25IN1437	25IN1503
25IN1438	