

Component Detail (1077)
Department of Transportation/Public Facilities

Component: Northern Design and Engineering Services (2299)

Non-Formula Component

RDU: Design, Engineering and Construction (526)

IRIS AP Type: T04F

	FY2018 Actuals (15158)	FY2019 Conference Committee (14954)	FY2019 Authorized (14962)	FY2019 Management Plan (14994)	FY2020 Governor (15610)	FY2020 Governor Amended (15636)	FY2020 Governor vs FY2020 Governor Amended	
1000 Personal Services	15,415.0	16,516.9	16,516.9	16,566.9	17,012.8	16,566.9	-445.9	-2.6%
2000 Travel	43.4	30.4	30.4	30.4	30.4	8.7	-21.7	-71.4%
3000 Services	562.5	482.6	482.6	482.6	482.6	482.6	0.0	0.0%
4000 Commodities	160.6	104.2	104.2	104.2	104.2	104.2	0.0	0.0%
5000 Capital Outlay	19.6	0.0	0.0	0.0	0.0	0.0	0.0	0.0%
7000 Grants, Benefits	0.0	0.0	0.0	0.0	0.0	0.0	0.0	0.0%
8000 Miscellaneous	0.0	0.0	0.0	0.0	0.0	0.0	0.0	0.0%
Totals	16,201.1	17,134.1	17,134.1	17,184.1	17,630.0	17,162.4	-467.6	-2.7%
<u>Funding Sources:</u>								
1004 Gen Fund (UGF)	124.7	128.1	128.1	128.1	128.6	123.7	-4.9	-3.8%
1005 GF/Prgm (DGF)	177.9	130.4	130.4	130.4	134.1	130.4	-3.7	-2.8%
1007 I/A Rcpts (Other)	31.1	158.7	158.7	158.7	162.8	158.7	-4.1	-2.5%
1061 CIP Rcpts (Other)	15,867.4	16,688.4	16,688.4	16,738.4	17,175.1	16,721.1	-454.0	-2.6%
1232 ISPF-I/A (Other)	0.0	28.5	28.5	28.5	29.4	28.5	-0.9	-3.1%
<u>Funding Totals:</u>								
Unrestricted General (UGF)	124.7	128.1	128.1	128.1	128.6	123.7	-4.9	-3.8%
Designated General (DGF)	177.9	130.4	130.4	130.4	134.1	130.4	-3.7	-2.8%
Other	15,898.5	16,875.6	16,875.6	16,925.6	17,367.3	16,908.3	-459.0	-2.6%
Federal	0.0	0.0	0.0	0.0	0.0	0.0	0.0	0.0%
<u>Positions:</u>								
Permanent Full Time	108	109	109	110	111	111	0	0.0%
Permanent Part Time	15	14	14	13	12	12	0	0.0%
Non Permanent	2	2	2	2	2	2	0	0.0%

Change Record Detail - Multiple Scenarios with Descriptions (294)
Department of Transportation/Public Facilities

Component: Northern Design and Engineering Services (2299)
RDU: Design, Engineering and Construction (526)

Scenario/Change Record Title	Trans Type	Totals	Personal Services	Travel	Services	Commodities	Capital Outlay	Grants, Benefits	Miscellaneous	PFT	PPT	NP
***** Changes From FY2019 Conference Committee To FY2019 Authorized *****												
FY2019 Conference Committee												
	ConfCom	17,134.1	16,516.9	30.4	482.6	104.2	0.0	0.0	0.0	109	14	2
1004 Gen Fund		128.1										
1005 GF/Prgm		130.4										
1007 I/A Rcpts		158.7										
1061 CIP Rcpts		16,688.4										
1232 ISPF-I/A		28.5										
Subtotal		17,134.1	16,516.9	30.4	482.6	104.2	0.0	0.0	0.0	109	14	2
***** Changes From FY2019 Authorized To FY2019 Management Plan *****												
Transfer from Southcoast Region Construction to Comply with Vacancy Factor Guidelines												
	Trin	50.0	50.0	0.0	0.0	0.0	0.0	0.0	0.0	0	0	0
1061 CIP Rcpts		50.0										
Transfer from the Southcoast Region Construction component to the Northern Design and Engineering Services component to bring personal services within vacancy factor guidelines. Authority is available to transfer due to high turnover and hiring staff at lower step placement than previously budgeted.												
Time Status Change Engineering Assistant I/II (25-1683) to Full-time for Surveying Functions												
	PosAdj	0.0	0.0	0.0	0.0	0.0	0.0	0.0	0.0	1	-1	0
The Northern Region Locations Surveying section contracts out a sizable amount of data-collection and processing work. Contracting out data collected by in-house field crews is not feasible due to state licensing requirements. In order to meet the Northern Region Locations Surveying section workload need, it is necessary to reclassify a part-time Survey Sub Journey II (25-1683), wage grade 56, LTC, located in Fairbanks to a full-time Engineering Assistant I/II, range 17/19, GP (General).												
ADN 25-2018-2921												
Subtotal		17,184.1	16,566.9	30.4	482.6	104.2	0.0	0.0	0.0	110	13	2
***** Changes From FY2019 Management Plan To FY2020 Governor Amended *****												
Time Status Change Eng Asst I/II Flex (25-1835) from Seasonal to Full Time to Support Right of Way Activities												
	PosAdj	0.0	0.0	0.0	0.0	0.0	0.0	0.0	0.0	1	-1	0
Time status change of Engineer Assistant I/II (25-1835) flex position located in Fairbanks from part-time seasonal to full-time to support right-of-way activities related to highways and aviation projects.												
Executive Branch 50% Travel Reduction												
	Dec	-21.7	0.0	-21.7	0.0	0.0	0.0	0.0	0.0	0	0	0
1004 Gen Fund		-4.4										
1061 CIP Rcpts		-17.3										

50% executive branch travel reduction based on actual costs of travel in FY2018. Exceptions were made to travel essential to public safety, health, and disaster

Change Record Detail - Multiple Scenarios with Descriptions (294)
Department of Transportation/Public Facilities

Component: Northern Design and Engineering Services (2299)

RDU: Design, Engineering and Construction (526)

Scenario/Change Record Title	Trans Type	Totals	Personal Services	Travel	Services	Commodities	Capital Outlay	Grants, Benefits	Miscellaneous	Positions		
										PFT	PPT	NP
management.												
	Totals	17,162.4	16,566.9	8.7	482.6	104.2	0.0	0.0	0.0	111	12	2

Personal Services Expenditure Detail (1445)

Department of Transportation/Public Facilities

Scenario: FY2020 Governor Amended (15636)

Component: Northern Design and Engineering Services (2299)

RDU: Design, Engineering and Construction (526)

Status PCN	Tracking ID	Job Class Title	Time Status	Retire Code	Barg Unit	Location	Salary Sched	Range / Steps	Comp Months	Split / Count	Annual Salaries	COLA	Premium Pay	Annual Benefits	Total Costs	UGF Amount
25-0165	18755	Engineering Assistant III	FT	A	GP	Fairbanks	203	21 M	12.0		101,881	4,503	7,843	58,880	173,107	
25-1369	19675	Engineer/Architect V	FT	A	SS	Fairbanks	203	27 M	12.0		152,844	0	0	73,870	226,714	12,855
25-1372	19678	Engineer/Architect IV	FT	A	SS	Fairbanks	203	26 O / P	12.0		164,216	0	0	77,359	241,575	
25-1377	19681	Administrative Assistant I	FT	A	GG	Fairbanks	203	12 N / O	12.0		57,995	2,553	4,217	41,391	106,156	2,123
25-1380	19682	Administrative Assistant I	FT	A	GP	Fairbanks	203	12 N / O	12.0		58,846	2,686	6,589	42,577	110,698	
25-1381	19683	Procurement Spec I	FT	A	GP	Fairbanks	203	14 K / L	12.0		59,680	2,449	0	40,459	102,588	2,052
25-1382	19684	Right of Way Agent VI	FT	A	SS	Fairbanks	203	23 R / S	12.0		163,946	0	0	77,276	241,222	48,679
25-1388	19689	Right of Way Agent III	FT	A	GP	Fairbanks	203	18 E / F	12.0		68,109	2,795	0	43,561	114,465	
25-1389	19690	Engineer/Architect III	FT	A	SS	Fairbanks	203	25 O / P	12.0		157,641	0	0	75,341	232,982	
25-1390	19691	Land Survey Manager I	FT	A	SS	Fairbanks	203	23 K	12.0		116,136	0	0	61,580	177,716	
25-1391	19692	Right of Way Agent III	FT	A	GP	Fairbanks	203	18 K / L	12.0		77,946	3,445	5,979	49,383	136,753	
25-1392	19693	Land Surveyor II	FT	A	SS	Fairbanks	2S4	22 D / E	12.0		99,737	0	0	55,543	155,280	
25-1393	19694	Engineer/Architect II	FT	A	SS	Fairbanks	203	23 O	12.0		134,568	0	0	68,263	202,831	
25-1394	19695	Engineering Assistant III	FT	A	GP	Fairbanks	203	21 B / C	12.0		76,662	3,146	0	46,710	126,518	
25-1395	19696	Engineering Associate	FT	A	GP	Fairbanks	203	21 L / M	12.0		99,127	4,379	7,554	57,760	168,820	
25-1396	19697	Engineer/Architect I	FT	A	GP	Fairbanks	203	22 L / M	12.0		106,467	4,702	8,091	60,659	179,919	
25-1398	19698	Engineer/Architect IV	FT	A	SS	Fairbanks	203	26 O	12.0		160,082	0	0	76,090	236,172	
25-1399	19699	Right of Way Agent III	FT	A	GP	Fairbanks	203	18 K / L	12.0		78,051	3,203	0	47,221	128,475	
25-1400	19700	Right of Way Agent II	FT	A	GP	Fairbanks	203	16 G	12.0		63,264	2,796	4,866	43,569	114,495	
25-1406	19704	Engineering Assistant III	FT	A	GP	Fairbanks	203	21 J / K	12.0		92,871	4,103	7,086	55,284	159,344	
25-1409	19707	Engineering Assistant III	FT	A	GP	Fairbanks	203	21 K / L	12.0		95,241	4,660	18,292	60,282	178,475	
25-1414	19711	Right of Way Agent IV	FT	A	SS	Fairbanks	203	20 N	12.0		105,963	0	0	57,835	163,798	
25-1415	19712	Right of Way Agent IV	FT	A	SS	Fairbanks	203	20 J / K	12.0		92,134	0	0	52,745	144,879	
25-1416	19713	Right of Way Agent III	FT	A	GP	Fairbanks	203	18 F / G	12.0		70,289	3,106	5,392	46,348	125,135	
25-1419	19716	Engineer/Architect IV	FT	A	SS	Fairbanks	203	26 K	12.0		138,156	0	0	69,363	207,519	
25-1421	19718	Engineering Assistant III	FT	A	GP	Fairbanks	203	21 D / E	12.0		81,744	3,608	6,159	50,847	142,358	
25-1423	19720	Right of Way Agent II	FT	A	GP	Fairbanks	203	16 L	12.0		70,224	3,104	5,401	46,328	125,057	
25-1425	19722	Right of Way Assistant	FT	A	GP	Fairbanks	203	12 F / G	12.0		46,542	2,056	3,550	36,929	89,077	
25-1426	19723	Environ Impact Analyst III	FT	A	GP	Fairbanks	203	19 A / B	12.0		64,524	5,039	58,246	63,682	191,491	

Note: If a position is split, an asterisk (*) will appear in the Split/Count column. If the split position is also counted in the component, two asterisks (**) will appear in this column. [No valid job title] appearing in the Job Class Title indicates that the PCN has an invalid class code or invalid range for the class code effective date of this scenario.

Personal Services Expenditure Detail (1445)

Department of Transportation/Public Facilities

Scenario: FY2020 Governor Amended (15636)

Component: Northern Design and Engineering Services (2299)

RDU: Design, Engineering and Construction (526)

Status	PCN	Tracking ID	Job Class Title	Time Status	Retire Code	Barg Unit	Location	Salary Sched	Range / Steps	Comp Months	Split / Count	Annual Salaries	COLA	Premium Pay	Annual Benefits	Total Costs	UGF Amount
25-1432	19725	Engineer/Architect I	FT	A	GP	Fairbanks	203	22 D / E	12.0	88,416	3,936	7,481	53,790	153,623			
25-1433	19726	Engineer/Architect II	FT	A	SS	Fairbanks	203	23 M	12.0	125,012	0	0	64,847	189,859			
25-1435	19728	Engineer/Architect II	FT	A	SS	Fairbanks	203	23 J	12.0	112,476	0	0	60,233	172,709			
25-1437	19730	Engineer/Architect I	FT	A	GP	Fairbanks	203	22 S	12.0	136,101	5,336	0	68,393	209,830			
25-1439	19732	Engineering Assistant III	FT	A	GP	Fairbanks	203	21 Q	12.0	118,051	5,125	6,815	64,453	194,444			
25-1441	19733	Engineering Assistant III	FT	A	GP	Fairbanks	203	21 K	12.0	95,112	4,204	7,317	56,194	162,827			
25-1442	19734	Engineer/Architect I	FT	A	GP	Fairbanks	203	22 E / F	12.0	88,554	4,053	10,201	54,842	157,650			
25-1444	19736	Engineer/Architect II	FT	A	SS	Fairbanks	203	23 D / E	12.0	104,464	0	0	57,283	161,747			
25-1446	19738	Engineer/Architect I	FT	A	GP	Fairbanks	203	22 E / F	12.0	88,830	3,646	0	51,189	143,665			
25-1460	19749	Right of Way Agent III	FT	A	GP	Fairbanks	203	18 B / C	12.0	62,208	2,698	3,528	42,688	111,122			
25-1491	19771	Driller Sub Journey	PT	A	LL	Fairbanks	2EE	54 A / B	9.0	38,592	0	19,841	35,299	93,732			
25-1500	19775	Survey Journey	PT	A	LL	Fairbanks	2EE	54 D / E	7.5	35,360	0	23,814	33,273	92,447			
25-1527	19793	Engineer/Architect III	FT	A	SS	Fairbanks	203	25 J	12.0	129,144	0	0	66,368	195,512			
25-1529	19794	Environ Impc Analysis Mgr I	FT	A	SS	Fairbanks	203	21 K	12.0	101,316	0	0	56,125	157,441			
25-1530	19795	Engineering Assistant III	FT	A	GP	Fairbanks	203	21 L / M	12.0	100,191	4,422	7,554	58,151	170,318			
25-1531	19796	Engineer/Architect I	FT	A	GG	Fairbanks	203	22 N	12.0	113,228	4,647	0	60,170	178,045			
25-1532	19797	Environ Impact Analyst II	FT	A	GP	Fairbanks	203	17 B / C	12.0	57,477	2,809	10,953	43,679	114,918			
25-1533	19798	Tech Eng I / Architect I	FT	A	GP	Fairbanks	203	24 M	12.0	125,496	5,151	0	64,685	195,332			
25-1536	19801	Environ Impact Analyst III	FT	A	GP	Fairbanks	203	19 J / K	12.0	82,212	4,009	15,472	54,448	156,141			
25-1537	19802	Engineering Assistant III	FT	A	GP	Fairbanks	203	21 M	12.0	101,881	4,503	7,843	58,880	173,107			
25-1538	19803	Engineering Asst I	FT	A	GP	Fairbanks	203	17 B / C	12.0	57,477	2,629	6,572	42,067	108,745			
25-1540	19805	Engineer/Architect I	FT	A	GP	Fairbanks	203	22 B / C	12.0	81,324	3,970	15,397	54,093	154,784			
25-1542	19807	Engineering Assistant II	FT	A	GP	Fairbanks	203	19 D / E	12.0	72,324	3,341	9,068	48,451	133,184			
25-1544	19808	Right of Way Agent III	FT	A	GP	Fairbanks	203	18 A / B	12.0	60,802	2,682	4,542	42,543	110,569			
25-1545	19809	Environ Impact Analyst III	FT	A	GP	Fairbanks	203	19 D / E	12.0	70,937	3,465	13,481	49,565	137,448			
25-1546	19810	Engineering Assistant II	FT	A	GP	Fairbanks	203	19 A / B	12.0	64,344	2,641	0	42,175	109,160			
25-1551	19813	Engineer/Architect I	FT	A	GP	Fairbanks	203	22 D / E	12.0	87,826	3,875	6,583	53,242	151,526			
25-1556	19818	Environ Impact Analyst III	FT	A	GP	Fairbanks	203	19 B / C	12.0	66,954	3,264	12,581	47,767	130,566			
25-1558	19820	Drafting Technician III	FT	A	GP	Fairbanks	203	15 C / D	12.0	52,064	2,541	9,858	41,284	105,747			

Note: If a position is split, an asterisk (*) will appear in the Split/Count column. If the split position is also counted in the component, two asterisks (**) will appear in this column. [No valid job title] appearing in the Job Class Title indicates that the PCN has an invalid class code or invalid range for the class code effective date of this scenario.

Personal Services Expenditure Detail (1445)

Department of Transportation/Public Facilities

Scenario: FY2020 Governor Amended (15636)

Component: Northern Design and Engineering Services (2299)

RDU: Design, Engineering and Construction (526)

Status	PCN	Tracking ID	Job Class Title	Time Status	Retire Code	Barg Unit	Location	Salary Sched	Range / Steps	Comp Months	Split / Count	Annual Salaries	COLA	Premium Pay	Annual Benefits	Total Costs	UGF Amount
25-1559	19821	Drafting Technician III	FT	A	GP	Fairbanks	203	15 B / C	12.0	50,302	2,455	9,517	40,510	102,784			
25-1565	19824	Survey Journey	PT	A	LL	Fairbanks	2EE	54 J	7.5	37,953	0	26,280	35,136	99,369			
25-1570	19828	Engineer/Architect I	FT	A	GP	Fairbanks	203	22 E / F	12.0	89,520	3,674	0	51,443	144,637			
25-1571	19829	Regional Engineering Geologist	FT	A	SS	Fairbanks	2S4	22 C / D	12.0	96,838	0	0	54,476	151,314			
25-1572	19830	Right of Way Agent III	FT	A	GP	Fairbanks	203	18 E / F	12.0	69,579	3,069	5,199	46,016	123,863			
25-1581	19837	Engineer/Architect III	FT	A	SS	Fairbanks	203	25 M / N	12.0	143,930	0	0	71,135	215,065			
25-1599	19844	Engineering Assistant III	FT	A	GP	Fairbanks	203	21 A / B	12.0	73,748	3,027	0	45,637	122,412			
25-1602	19845	Engineer/Architect III	FT	A	SS	Fairbanks	203	25 J / K	12.0	132,994	0	0	67,780	200,774			
25-1604	19847	Environ Impact Analyst II	FT	A	GP	Fairbanks	203	17 K	12.0	72,684	3,557	13,976	50,390	140,607			
25-1607	19849	Engineering Assistant III	FT	A	GP	Fairbanks	203	21 D / E	12.0	81,324	3,338	0	48,426	133,088			
25-1611	19852	Engineering Assistant III	FT	A	GP	Fairbanks	203	21 J	12.0	92,124	3,781	0	52,401	148,306			
25-1612	19853	Survey Lead	PT	A	LL	Fairbanks	2EE	53 K / L	9.0	51,700	0	28,872	43,448	124,020			
25-1622	19857	Engineering Assistant II	FT	A	GP	Fairbanks	203	19 D / E	12.0	70,289	2,885	0	44,364	117,538			
25-1624	19859	Engineering Geologist II	FT	A	GP	Fairbanks	203	18 J	12.0	75,290	4,041	23,166	54,732	157,229			
25-1626	19861	Engineering Assistant III	FT	A	GP	Fairbanks	203	21 B / C	12.0	76,282	3,131	0	46,570	125,983			
25-1630	19863	Procurement Spec II	FT	A	SS	Fairbanks	203	16 O / P	12.0	84,648	0	0	49,989	134,637	2,693		
25-1635	19867	Engineering Geologist II	FT	A	GP	Fairbanks	203	18 B / C	12.0	62,208	3,615	25,872	50,913	142,608			
25-1636	19868	Engineering Geologist II	FT	A	GP	Fairbanks	203	18 D / E	12.0	66,234	3,338	15,097	48,428	133,097			
25-1643	19875	Matlab Tech Sub Journey IV	PT	A	LL	Fairbanks	2EE	54 B	11.0	47,333	0	7,449	37,019	91,801			
25-1644	19876	Driller Sub Journey	PT	A	LL	Fairbanks	2EE	54 J	9.0	45,543	0	30,660	41,840	118,043			
25-1645	19877	Driller Journey	FT	A	LL	Fairbanks	2EE	53 F	12.0	62,263	0	31,437	52,877	146,577			
25-1647	19879	Tech Eng I / Architect I	FT	A	GP	Fairbanks	203	24 N / O	12.0	130,896	5,254	0	66,673	202,823			
25-1648	19880	Matlab Tech Sub Journey IV	PT	A	LL	Fairbanks	2EE	54 B	9.0	38,727	0	11,173	32,158	82,058			
25-1673	19894	Engineering Associate	FT	A	GP	Fairbanks	203	21 D / E	12.0	81,429	3,342	0	48,464	133,235			
25-1677	19897	Engineer/Architect II	FT	A	SS	Fairbanks	203	23 L	12.0	119,904	0	0	62,967	182,871			
25-1682	19901	Survey Sub Journey II	PT	A	LL	Fairbanks	2EE	56 E / F	7.5	32,884	0	26,565	33,375	92,824			
25-1683	19902	Engineering Assistant II	FT	A	GG	Fairbanks	203	19 D / E	12.0	71,954	2,953	0	44,977	119,884			
25-1694	19909	Survey Sub Journey II	PT	A	LL	Fairbanks	2EE	56 K	7.5	35,223	0	26,422	34,183	95,828			
25-1704	19914	Engineering Assistant II	FT	A	GP	Fairbanks	203	19 M	12.0	88,999	4,075	10,276	55,033	158,383			

Note: If a position is split, an asterisk (*) will appear in the Split/Count column. If the split position is also counted in the component, two asterisks (**) will appear in this column. [No valid job title] appearing in the Job Class Title indicates that the PCN has an invalid class code or invalid range for the class code effective date of this scenario.

Personal Services Expenditure Detail (1445)

Department of Transportation/Public Facilities

Scenario: FY2020 Governor Amended (15636)

Component: Northern Design and Engineering Services (2299)

RDU: Design, Engineering and Construction (526)

Status	PCN	Tracking ID	Job Class Title	Time Status	Retire Code	Barg Unit	Location	Salary Sched	Range / Steps	Comp Months	Split / Count	Annual Salaries	COLA	Premium Pay	Annual Benefits	Total Costs	UGF Amount
25-1707	19917	Engineer/Architect III	FT	A	SS	Fairbanks	203	25	F / J	12.0		128,470	0	0	66,120	194,590	
25-1708	19918	Engineer/Architect III	FT	A	SS	Fairbanks	203	25	K / L	12.0		136,404	0	0	68,826	205,230	
25-1712	19922	Engineering Assistant II	FT	A	SS	Fairbanks	603	19	Q / R	12.0		112,757	0	7,954	63,264	183,975	
25-1729	19928	Right of Way Agent III	FT	A	GP	Fairbanks	203	18	F / G	12.0		71,399	3,152	5,392	46,757	126,700	
25-1731	19930	Engineering Assistant III	FT	A	GP	Fairbanks	203	21	F / G	12.0		86,174	3,537	0	50,211	139,922	
25-1732	19931	Administrative Assistant II	FT	A	GP	Fairbanks	203	14	P	12.0		70,654	2,900	0	44,498	118,052	7,083
25-1737	19934	Office Assistant II	FT	A	GP	Fairbanks	203	10	O / P	12.0		52,410	2,151	0	37,782	92,343	
25-1740	19935	Land Surveyor I	FT	A	GP	Fairbanks	203	21	M / N	12.0		103,123	4,232	0	56,450	163,805	
25-1756	19942	Administrative Assistant I	FT	A	GP	Fairbanks	203	12	O	12.0		59,204	2,430	0	40,283	101,917	
25-1757	19943	Office Assistant II	FT	A	GP	Fairbanks	203	10	F / G	12.0		41,490	1,703	0	33,763	76,956	
25-1766	19948	Engineer/Architect III	FT	A	SS	Fairbanks	203	25	C / D	12.0		115,734	0	0	61,432	177,166	
25-1768	19950	Office Assistant II	FT	A	GP	Fairbanks	203	10	E / F	12.0		40,264	1,653	0	33,312	75,229	
25-1770	19952	Drafting Technician III	FT	A	GP	Fairbanks	203	15	J / K	12.0		62,884	3,066	11,820	45,989	123,759	
25-1771	19953	Environ Impact Analyst III	FT	A	GP	Fairbanks	203	19	J / K	12.0		81,227	3,969	15,472	54,085	154,753	
25-1775	19954	Driller Journey	PT	A	LL	Fairbanks	2EE	53	F	7.5		38,915	0	22,455	34,082	95,452	
25-1776	19955	Matlab Tech Sub Journey IV	PT	A	LL	Fairbanks	2EE	54	A / B	9.0		38,457	0	10,822	31,929	81,208	
25-1777	19956	Engineering Assistant II	FT	A	GP	Fairbanks	203	19	B / C	12.0		65,604	2,693	0	42,639	110,936	
25-1802	19976	Engineering Assistant II	FT	A	GP	Fairbanks	203	19	E / F	12.0		73,638	3,479	11,127	49,692	137,936	
25-1832	19993	Drafting Technician III	FT	A	GP	Fairbanks	203	15	F / G	12.0		58,177	2,837	10,953	43,937	115,904	
25-1835	19996	Engineering Assistant II	FT	A	GG	Fairbanks	203	19	A / B	12.0		64,524	5,125	60,338	64,452	194,439	
25-1850	20001	Environ Impact Analyst II	FT	A	GP	Fairbanks	203	17	J	12.0		70,404	3,445	13,537	49,389	136,775	
25-1871	20012	Survey Lead	PT	A	LL	Fairbanks	2EE	53	L	9.0		51,798	0	29,889	43,859	125,546	
25-2410	20458	Environ Impact Analyst III	FT	A	GP	Fairbanks	203	19	E / F	12.0		74,076	3,611	13,908	50,877	142,472	
25-2418	20465	Tech Eng I / Architect I	FT	A	GP	Fairbanks	203	24	K	12.0		117,144	4,808	0	61,611	183,563	
25-3449	21186	Engineering Assistant III	FT	A	GP	Fairbanks	203	21	K	12.0		95,112	3,904	0	53,501	152,517	
25-3450	21187	Engineering Assistant III	FT	A	GP	Fairbanks	203	21	K	12.0		95,112	3,904	0	53,501	152,517	
25-3452	21189	Engineer/Architect I	FT	A	GP	Fairbanks	203	22	E / F	12.0		88,692	3,640	0	51,138	143,470	
25-3453	21190	Engineering Assistant III	FT	A	GP	Fairbanks	203	21	B / C	12.0		76,092	3,123	0	46,500	125,715	
25-3516	21246	Engineer/Architect III	FT	A	SS	Fairbanks	203	25	O / P	12.0		158,687	0	0	75,662	234,349	

Note: If a position is split, an asterisk (*) will appear in the Split/Count column. If the split position is also counted in the component, two asterisks (**) will appear in this column. [No valid job title] appearing in the Job Class Title indicates that the PCN has an invalid class code or invalid range for the class code effective date of this scenario.

Personal Services Expenditure Detail (1445)

Department of Transportation/Public Facilities

Scenario: FY2020 Governor Amended (15636)
Component: Northern Design and Engineering Services (2299)
RDU: Design, Engineering and Construction (526)

Status	PCN	Tracking ID	Job Class Title	Time Status	Retire Code	Barg Unit	Location	Salary Sched	Range / Steps	Comp Months	Split / Count	Annual Salaries	COLA	Premium Pay	Annual Benefits	Total Costs	UGF Amount
25-3574		21298	Engineer/Architect I	FT	A	GP	Fairbanks	203	22 K / L	12.0		104,490	4,289	0	56,953	165,732	
25-3593		21317	Environ Impact Analyst III	FT	A	GP	Fairbanks	203	19 J / K	12.0		82,431	4,018	15,472	54,528	156,449	
25-3605		21328	Engineering Assistant III	FT	A	GP	Fairbanks	203	21 B / C	12.0		76,377	3,135	0	46,605	126,117	
25-3606		21329	Tech Eng I / Architect I	FT	A	GP	Fairbanks	203	24 J	12.0		113,460	4,657	0	60,255	178,372	
25-3607		21330	Engineer/Architect I	FT	A	GP	Fairbanks	203	22 F / G	12.0		93,736	3,847	0	52,995	150,578	
25-3608		21331	Engineering Assistant III	FT	A	GP	Fairbanks	203	21 B / C	12.0		77,042	3,162	0	46,849	127,053	
25-3694		21411	Right of Way Agent II	FT	A	GP	Fairbanks	203	16 F / G	12.0		61,592	2,721	4,704	42,894	111,911	
25-IN1202		21490	College Intern IV	NP	N	EE	Fairbanks	N03	12 A	6.0		20,660	0	7,946	3,596	32,202	
25-IN1204		21489	College Intern IV	NP	N	EE	Fairbanks	N03	12 A	6.0		20,660	0	7,946	3,596	32,202	

	Total Positions	New	Deleted	
Full Time Positions:	111	0	0	Total Salary Costs: 10,534,935
Part Time Positions:	12	0	0	Total COLA: 296,006
Non Permanent Positions:	2	0	0	Total Premium Pay: 889,862
Positions in Component:	125	0	0	Total Benefits: 6,398,484
Total Component Months: 1446.5				Total Pre-Vacancy: 18,119,287
				Minus Vacancy Adjustment of 6.11%: (1,106,487)
				Total Post-Vacancy: 17,012,800
				Plus Lump Sum Premium Pay: 0
				Personal Services Line 100: 17,012,800

PCN Funding Sources:	Pre-Vacancy	Post-Vacancy	Percent
1004 General Fund Receipts	75,484	70,874	0.42%
1005 General Fund/Program Receipts	142,738	134,021	0.79%
1007 Interagency Receipts	153,828	144,434	0.85%
1039 U/A Indirect Cost Recovery	3,056,542	2,869,889	16.87%
1061 Capital Improvement Project Receipts	14,661,513	13,766,181	80.92%

Note: If a position is split, an asterisk (*) will appear in the Split/Count column. If the split position is also counted in the component, two asterisks (**) will appear in this column. [No valid job title] appearing in the Job Class Title indicates that the PCN has an invalid class code or invalid range for the class code effective date of this scenario.

Personal Services Expenditure Detail (1445)

Department of Transportation/Public Facilities

Scenario: FY2020 Governor Amended (15636)

Component: Northern Design and Engineering Services (2299)

RDU: Design, Engineering and Construction (526)

PCN Funding Sources:	Pre-Vacancy	Post-Vacancy	Percent
1232 In-state Pipeline Fund Interagency	29,182	27,400	0.16%
Total PCN Funding:	18,119,287	17,012,800	100.00%

Note: If a position is split, an asterisk (*) will appear in the Split/Count column. If the split position is also counted in the component, two asterisks (**) will appear in this column. [No valid job title] appearing in the Job Class Title indicates that the PCN has an invalid class code or invalid range for the class code effective date of this scenario.

DEPARTMENT OF TRANSPORTATION & PUBLIC FACILITIES
 DESIGN, ENGINEERING & CONSTRUCTION
 NORTHERN DESIGN & ENGINEERING SERVICES (2299)
 FY2020 GOVERNOR AMENDED BUDGET

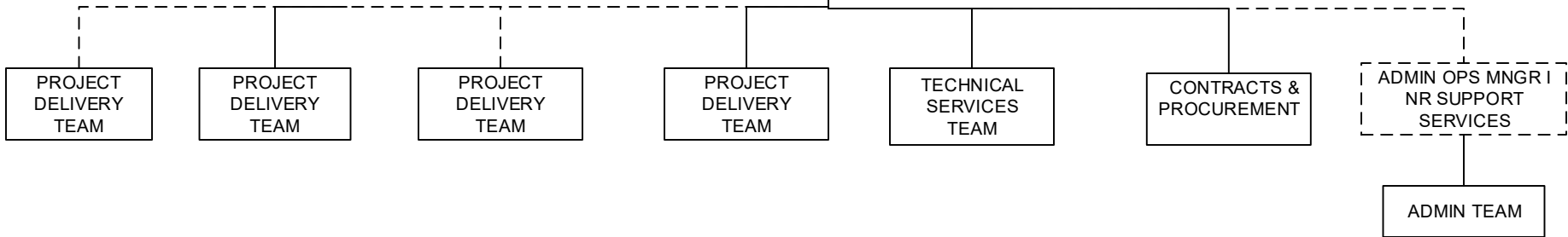
NORTHERN REGION DESIGN & ENGINEERING SERVICES	
POSITIONS	TOTAL
FULL-TIME	110
SEASONAL	13
NON PERM	2
TOTAL	125

Fairbanks (JBA)

NORTHERN REGIONAL DIRECTOR
 DIVISION DIRECTOR
 25-1239 (XE) 27

PRE-CONSTRUCTION ENGINEER
 Eng/Arch V
 25-1369 (SS) 27

Traffic & Safety Eng
 Tech Eng I/Arch I
 25-2418 (GP) 24



Positions	Total
Full-Time	2
Seasonal	0
Total	2

**Positions located in Fairbanks (JBA) unless otherwise noted.
 Dotted line positions are not budgeted in this component.**

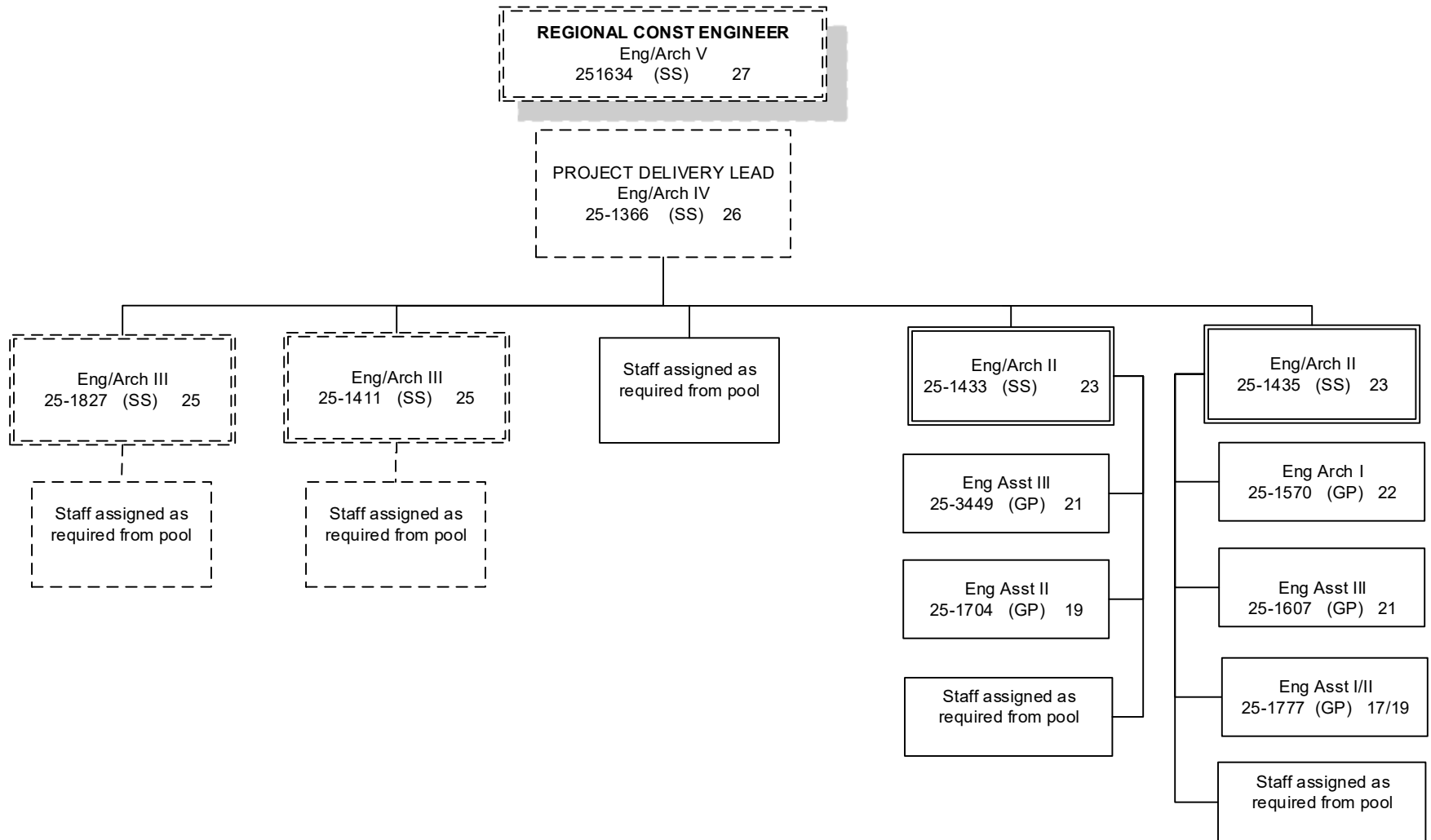
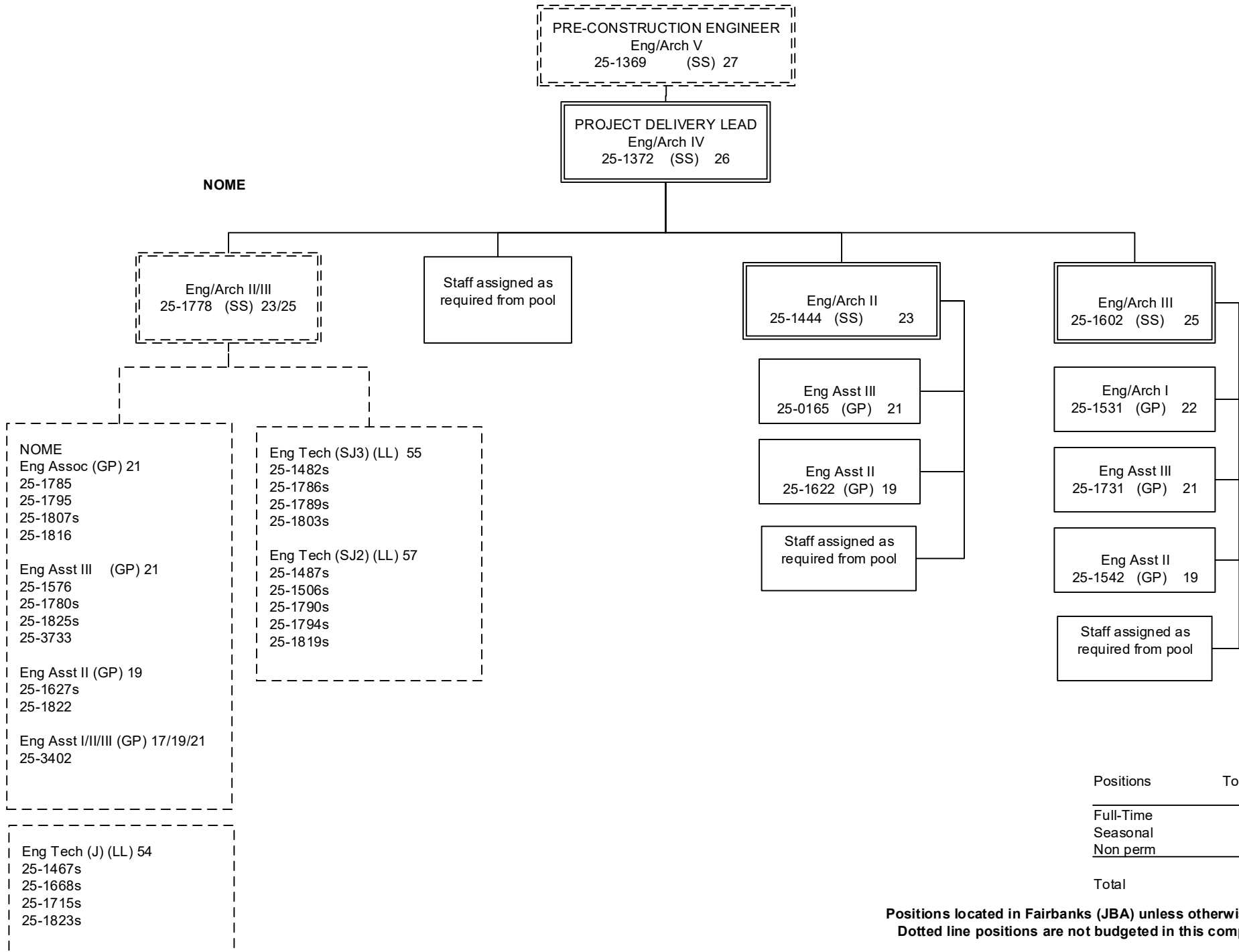


CHART 3

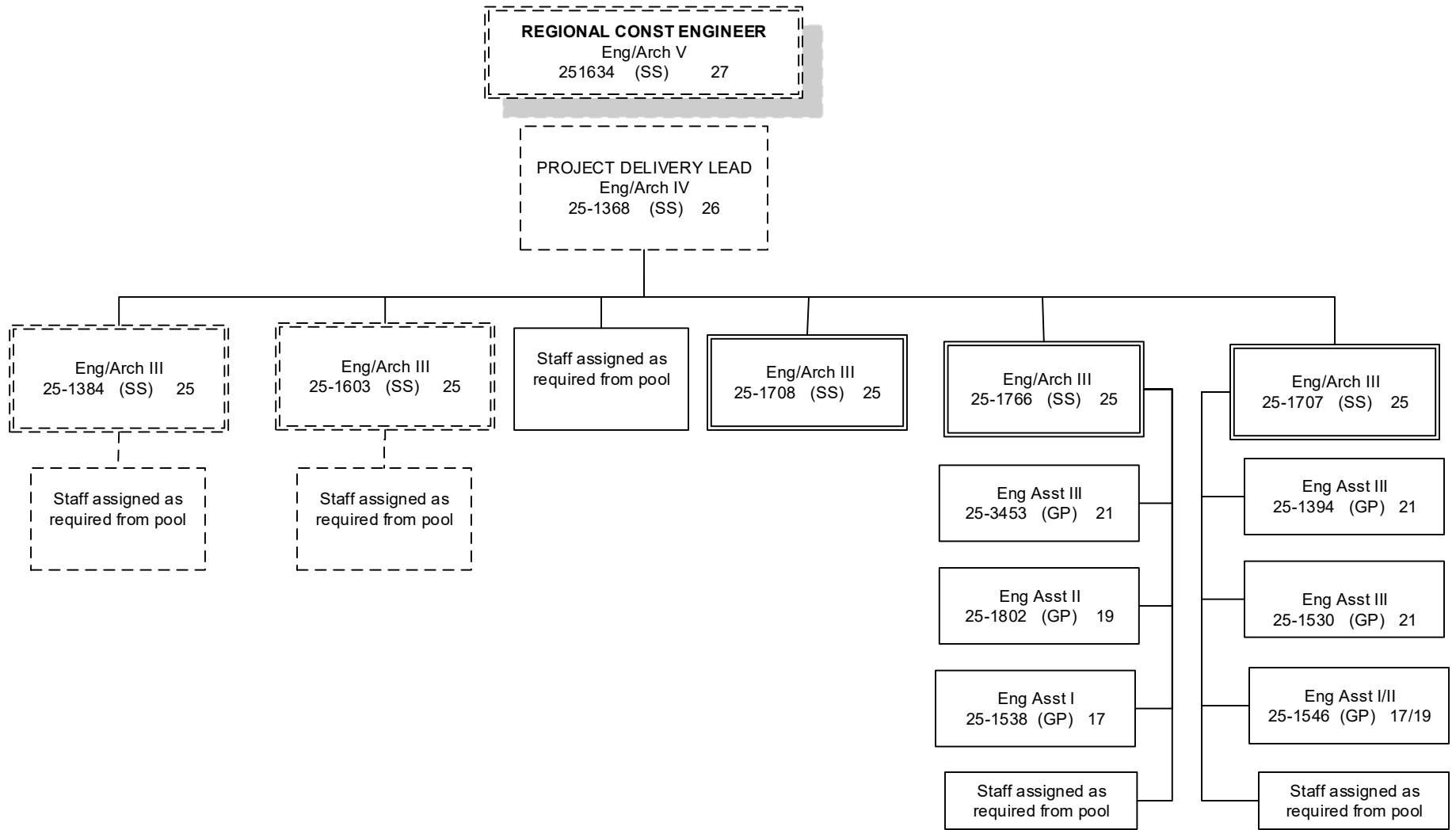
Positions	Total
Full-Time	7
Seasonal	0
Total	7

Positions located in Fairbanks (JBA) unless otherwise noted.
 Dotted line positions are not budgeted in this component.



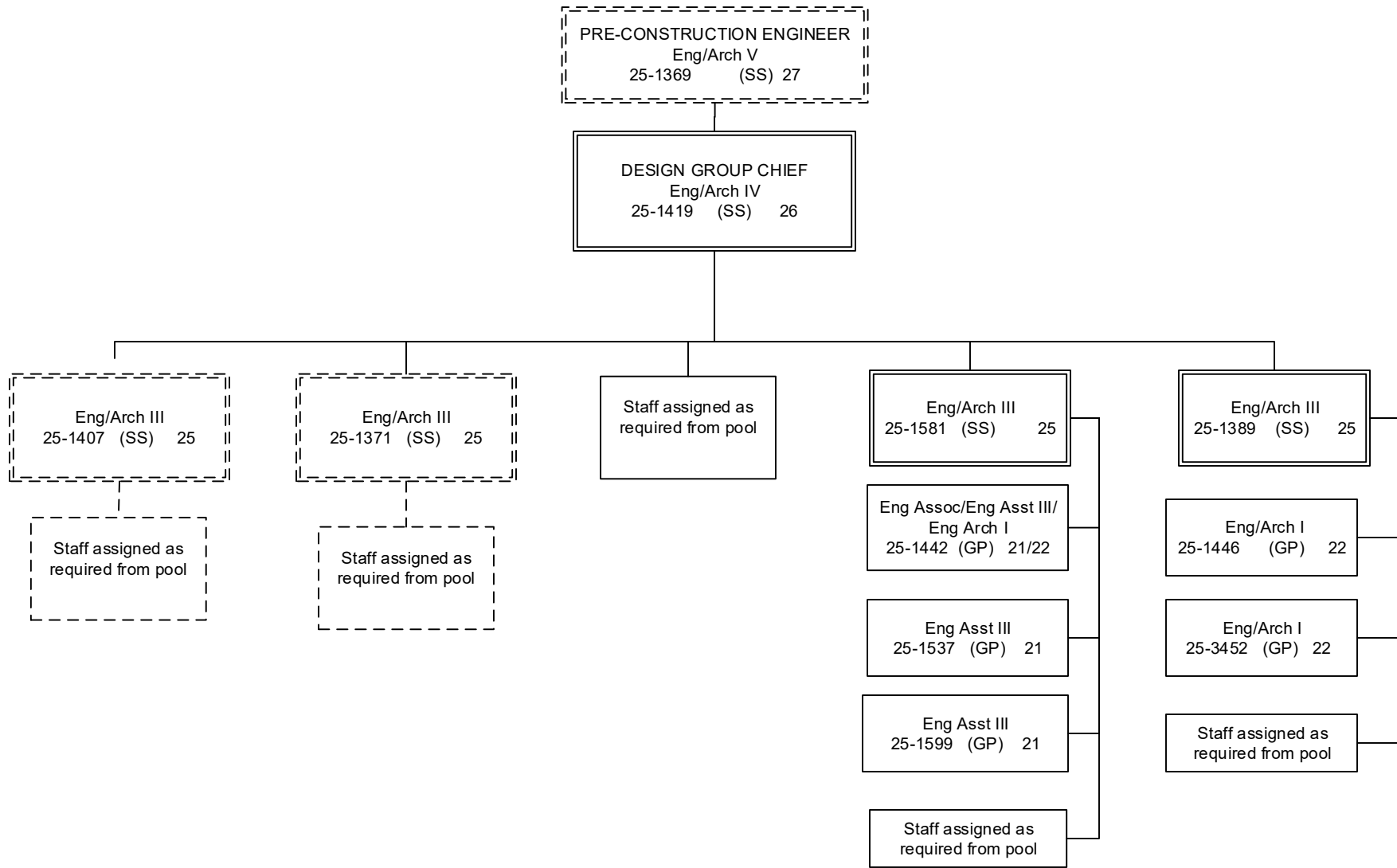
Positions	Total
Full-Time	8
Seasonal	0
Non perm	0
Total	8

Positions located in Fairbanks (JBA) unless otherwise noted.
 Dotted line positions are not budgeted in this component.



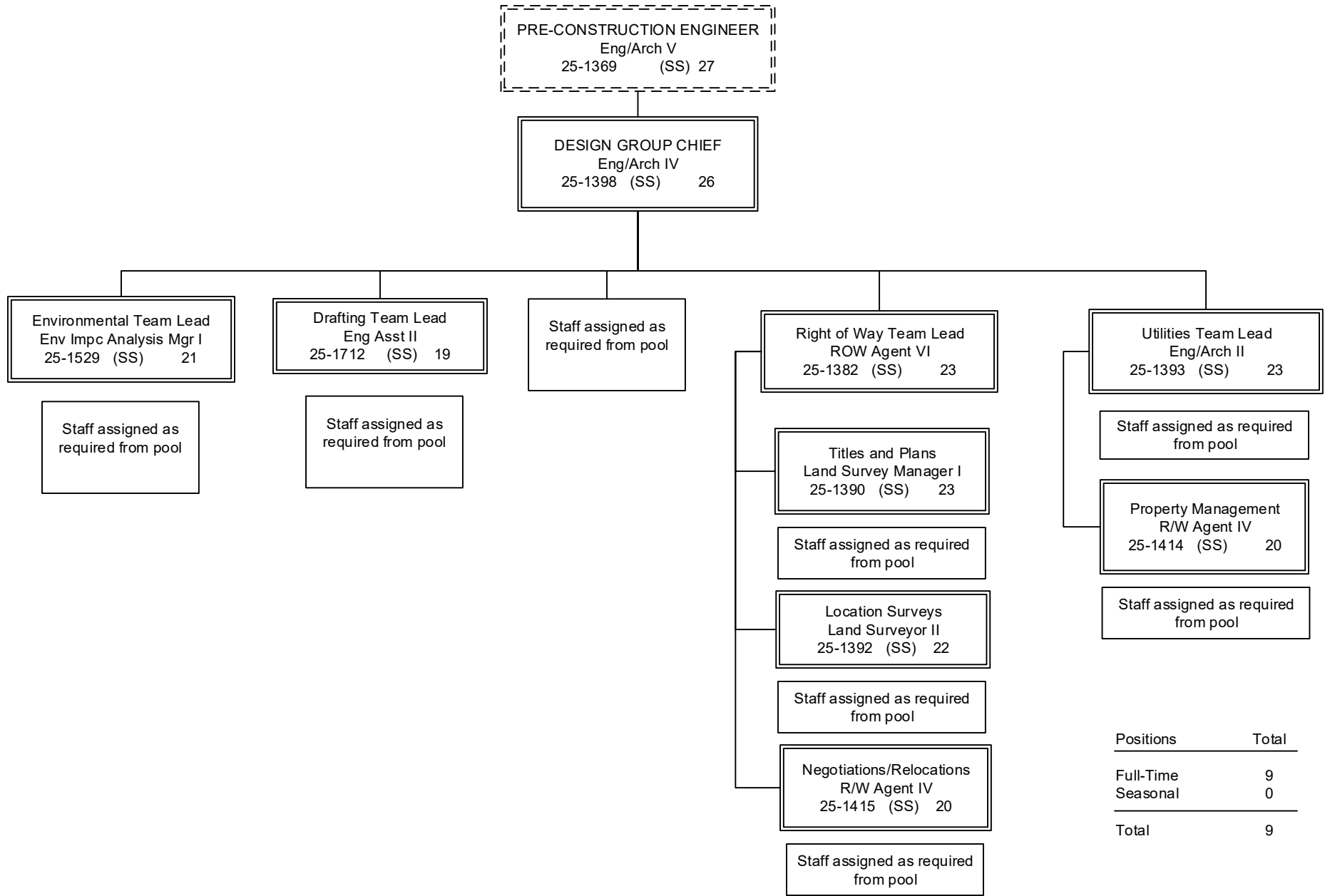
Positions	Total
Full-Time	9
Seasonal	0
Total	9

**Positions located in Fairbanks (JBA) unless otherwise noted.
 Dotted line positions are not budgeted in this component.**



Positions	Total
Full-Time	8
Seasonal	0
Total	8

Positions located in Fairbanks (JBA) unless otherwise noted.
 Dotted line positions are not budgeted in this component.



Positions located in Fairbanks (JBA) unless otherwise noted.
 Dotted line positions are not budgeted in this component.

ROW & UTILITIES STAFF ASSIGNED AS REQUIRED

Eng Arch I (GP) 22
 25-1396

Land Surveyor I (GP) 21
 25-1740

Eng Asst III (GP) 21
 25-1406
 25-1409
 25-1421
 25-1611
 25-3450

Eng Asst I/II/III (GP) 17/19/21
 25-1626

Eng Asst I/II (GP) 17/19
 25-1683
 25-1835

ROW Agent III (GP) 18
 25-1388
 25-1391
 25-1399
 25-1416
 25-1460
 25-1544
 25-1572
 25-1729

ROW Agent II (GP) 16
 25-1400
 25-1423
 25-3694

Survey – Lead (LL) 53
 25-1612s
 25-1871s

ROW Asst (GP) 12
 25-1425

Survey – J (LL) 54
 25-1500s
 25-1565s

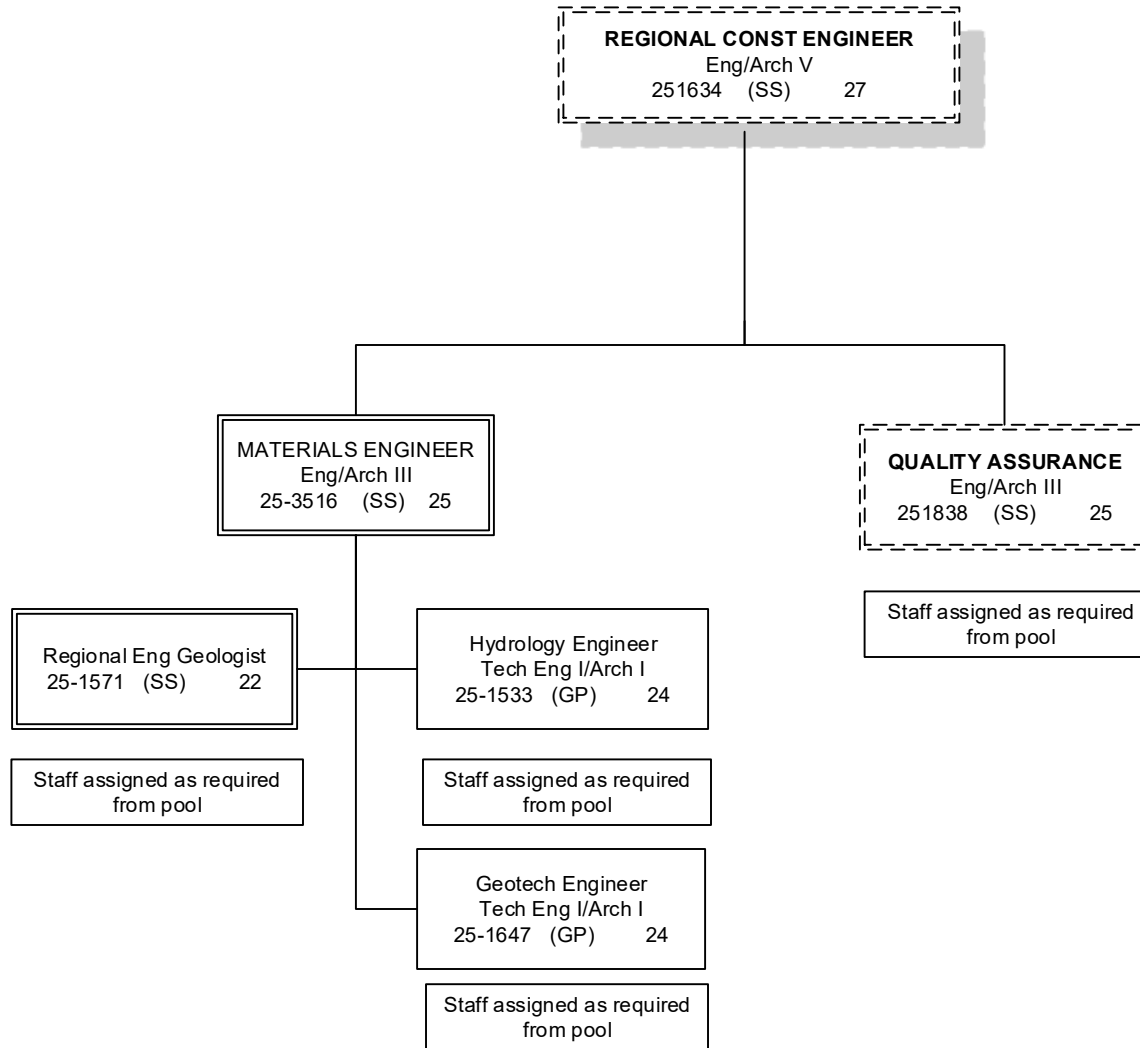
Survey – SJ II (LL) 56
 25-1682s
 25-1694s

Positions	Total
Full-Time	22
Seasonal	6
Total	28

SJ – Sub Journey
 J = Journey

Positions located in Fairbanks (JBA) unless otherwise noted.
 Dotted line positions are not budgeted in this component.

(s) = Seasonal Position



Positions	Total
Full-Time	4
Seasonal	0
Non Perm	0
Total	4

Positions located in Fairbanks (JBA) unless otherwise noted.
 Dotted line positions are not budgeted in this component.

(s) = Seasonal Position

MATERIALS & QUALITY ASSURANCE STAFF ASSIGNED AS REQUIRED

Eng/Arch I (GP) 22
 25-1551
 25-3574

Eng Asst III (GP) 21
 25-1439
 25-1441

Eng Geologist II (GP) 18
 25-1624
 25-1635
 25-1636

Driller Journey (LL) 53
 25-1645
 25-1775s

Driller SJ (LL) 54
 25-1491s
 25-1644s

Mat Lab Tech SJ I/II/III/IV, J (LL)
 59/57/56/54/53
 25-1643s
 25-1648s
 25-1776s

SJ – Sub Journey
 J = Journey

Positions	Total
Full-Time	8
Seasonal	6
Non Perm	0
Total	14

**Positions located in Fairbanks (JBA) unless otherwise noted.
 Dotted line positions are not budgeted in this component.**

(s) = Seasonal Position

DESIGN ENGINEERING STAFF ASSIGNED AS REQUIRED

Eng Arch I (GP) 22
 25-1432
 25-1437
 25-3607

 Eng Asst III/Eng Associate/
 Eng- Arch I (GP) 21/22

 25-1540

Eng Asst III (GP) 21

 25-3605
 25-3608

Env Impact Analyst III (GP) 19

 25-1536
 25-1545
 25-1556
 25-1771
 25-2410
 25-3593

Env Impact Analyst II (GP) 17

 25-1532
 25-1604
 25-1850

Env Impact Analyst I/II/III (GP) 15/17/19

 25-1426

Drafting Tech III (GP) 15

 25-1559
 25-1558
 25-1770
 25-1832

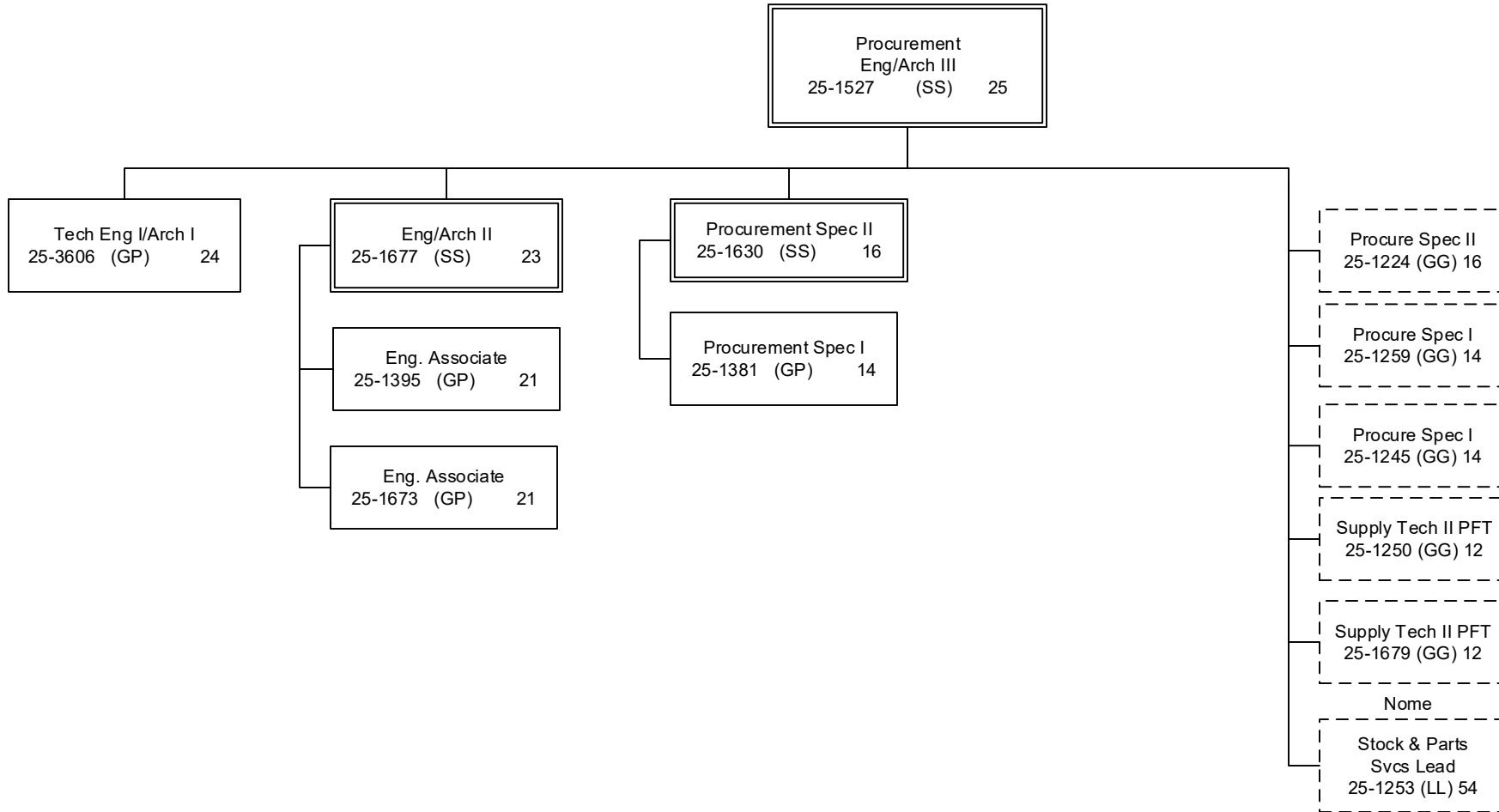
College Intern I/II/III/IV (EE)8/9/10/12

 25-IN1202
 25-IN1204

Positions	Total
Full-Time	20
Seasonal	0
Non Perm	2
Total	22

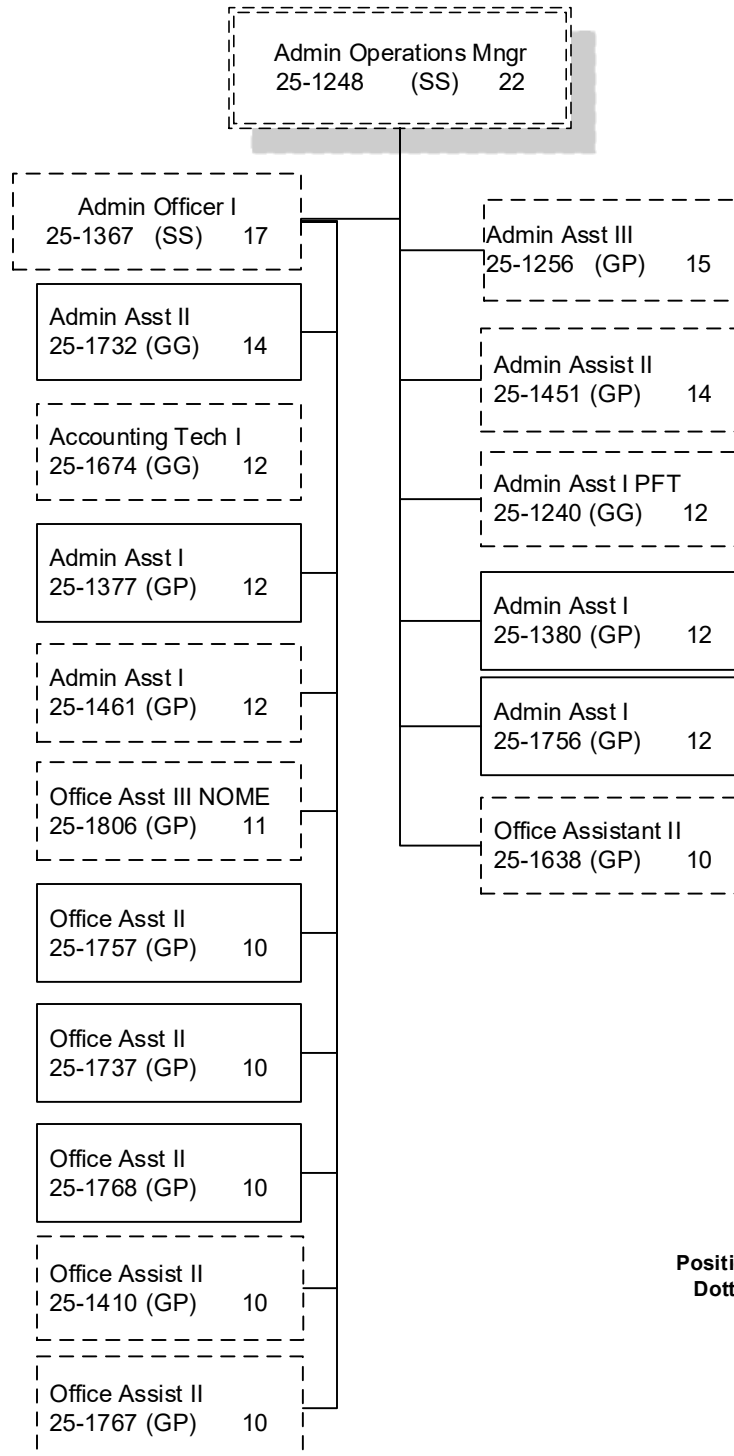
**Positions located in Fairbanks (JBA) unless otherwise noted.
 Dotted line positions are not budgeted in this component.**

(s) = Seasonal Position



Positions	Total
Full-Time	7
Seasonal	0
Total	7

Positions located in Fairbanks (JBA) unless otherwise noted.
 Dotted line positions are not budgeted in this component.



Positions	Total
Full-Time	7
Seasonal	0
Total	7

**Positions located in Fairbanks (JBA) unless otherwise noted.
 Dotted line positions are not budgeted in this component.**