

Component Detail (1077)
Department of Transportation/Public Facilities

Component: Measurement Standards & Commercial Vehicle Enforcement (2332)

Non-Formula Component

RDU: Administration and Support (333)

IRIS AP Type: T02V

	FY2018 Actuals (15158)	FY2019 Conference Committee (14954)	FY2019 Authorized (14962)	FY2019 Management Plan (14994)	FY2020 Governor (15610)	FY2020 Governor Amended (15636)	FY2020 Governor vs FY2020 Governor Amended	
1000 Personal Services	5,237.4	5,645.3	5,645.3	5,645.3	5,817.7	5,645.3	-172.4	-3.0%
2000 Travel	158.9	217.7	217.7	217.7	217.7	138.2	-79.5	-36.5%
3000 Services	542.0	749.6	749.6	749.6	749.6	749.6	0.0	0.0%
4000 Commodities	70.9	87.5	87.5	87.5	87.5	87.5	0.0	0.0%
5000 Capital Outlay	377.0	39.4	39.4	39.4	39.4	39.4	0.0	0.0%
7000 Grants, Benefits	0.0	0.0	0.0	0.0	0.0	0.0	0.0	0.0%
8000 Miscellaneous	0.0	0.0	0.0	0.0	0.0	0.0	0.0	0.0%
Totals	6,386.2	6,739.5	6,739.5	6,739.5	6,911.9	6,660.0	-251.9	-3.6%
<u>Funding Sources:</u>								
1004 Gen Fund (UGF)	924.6	1,062.0	1,062.0	1,062.0	1,085.8	1,057.4	-28.4	-2.6%
1005 GF/Prgm (DGF)	2,766.1	3,039.0	3,039.0	3,039.0	3,110.9	2,970.9	-140.0	-4.5%
1007 I/A Rcpts (Other)	9.1	15.0	15.0	15.0	15.0	15.0	0.0	0.0%
1061 CIP Rcpts (Other)	2,183.4	2,105.0	2,105.0	2,105.0	2,167.2	2,105.0	-62.2	-2.9%
1215 UCR Rcpts (Other)	503.0	518.5	518.5	518.5	533.0	511.7	-21.3	-4.0%
<u>Funding Totals:</u>								
Unrestricted General (UGF)	924.6	1,062.0	1,062.0	1,062.0	1,085.8	1,057.4	-28.4	-2.6%
Designated General (DGF)	2,766.1	3,039.0	3,039.0	3,039.0	3,110.9	2,970.9	-140.0	-4.5%
Other	2,695.5	2,638.5	2,638.5	2,638.5	2,715.2	2,631.7	-83.5	-3.1%
Federal	0.0	0.0	0.0	0.0	0.0	0.0	0.0	0.0%
<u>Positions:</u>								
Permanent Full Time	60	60	60	60	60	60	0	0.0%
Permanent Part Time	0	0	0	0	0	0	0	0.0%
Non Permanent	0	0	0	0	0	0	0	0.0%

Change Record Detail - Multiple Scenarios with Descriptions (294)
Department of Transportation/Public Facilities

Component: Measurement Standards & Commercial Vehicle Enforcement (2332)

RDU: Administration and Support (333)

Scenario/Change Record Title	Trans Type	Totals	Personal Services	Travel	Services	Commodities	Capital Outlay	Grants, Benefits	Miscellaneous	PFT	Positions PPT	NP
***** Changes From FY2019 Conference Committee To FY2019 Authorized *****												
FY2019 Conference Committee												
	ConfCom	6,739.5	5,645.3	217.7	749.6	87.5	39.4	0.0	0.0	60	0	0
1004 Gen Fund		1,062.0										
1005 GF/Prgm		3,039.0										
1007 I/A Rcpts		15.0										
1061 CIP Rcpts		2,105.0										
1215 UCR Rcpts		518.5										
Subtotal		6,739.5	5,645.3	217.7	749.6	87.5	39.4	0.0	0.0	60	0	0
***** Changes From FY2019 Management Plan To FY2020 Governor Amended *****												
Division Name Change												
	Misadj	0.0	0.0	0.0	0.0	0.0	0.0	0.0	0.0	0	0	0
A change to the division's name is requested to more accurately reflect the core services provided by Measurement Standards & Commercial Vehicle Enforcement.												
Requested name change: Measurement Standards & Commercial Vehicle Compliance.												
Executive Branch 50% Travel Reduction												
	Dec	-79.5	0.0	-79.5	0.0	0.0	0.0	0.0	0.0	0	0	0
1004 Gen Fund		-4.6										
1005 GF/Prgm		-68.1										
1215 UCR Rcpts		-6.8										
50% executive branch travel reduction based on actual costs of travel in FY2018. Exceptions were made to travel essential to public safety, health, and disaster management.												
Totals		6,660.0	5,645.3	138.2	749.6	87.5	39.4	0.0	0.0	60	0	0

Personal Services Expenditure Detail (1445)

Department of Transportation/Public Facilities

Scenario: FY2020 Governor Amended (15636)

Component: Measurement Standards & Commercial Vehicle Enforcement (2332)

RDU: Administration and Support (333)

Status	PCN	Tracking ID	Job Class Title	Time Status	Retire Code	Barg Unit	Location	Salary Sched	Range / Steps	Comp Months	Split / Count	Annual Salaries	COLA	Premium Pay	Annual Benefits	Total Costs	UGF Amount
08-5001		10468	Weights & Meas Insp II	FT	A	GP	Juneau	205	16 M / N	12.0		75,026	3,359	6,823	48,619	133,827	
08-5005		10469	Weights & Meas Insp II	FT	A	GP	Anchorage	200	16 D / E	12.0		56,486	2,528	5,104	41,162	105,280	
08-5006		10470	Weights & Meas Insp II	FT	A	GP	Anchorage	200	16 C / D	12.0		53,710	2,406	4,919	40,072	101,107	
08-5031		10471	Accountant III	FT	A	GP	Anchorage	200	18 G	12.0		70,212	2,882	0	44,335	117,429	11,743
08-5032		10472	Weights & Meas Insp I	FT	A	GP	Anchorage	200	14 B / C	12.0		45,438	2,035	4,136	36,739	88,348	
08-5038		10474	Weights & Meas Insp Trne	FT	A	GP	Anchorage	200	12 A / B	12.0		38,803	1,737	3,519	34,069	78,128	
08-5039		10475	Weights & Meas Insp II	FT	A	GP	Juneau	205	16 O	12.0		79,954	3,585	7,386	50,640	141,565	
08-5043		10476	Weights & Meas Insp Trne	FT	A	GP	Anchorage	200	12 A / B	12.0		38,803	1,737	3,519	34,069	78,128	
08-5044		10477	State Metrologist II	FT	A	GP	Anchorage	200	18 K / L	12.0		77,202	3,169	0	46,908	127,279	
08-5048		10478	Chf Wgts Meas & Permit	FT	A	SS	Anchorage	200	22 A / B	12.0		84,852	0	0	50,064	134,916	
08-5054		10480	Comm Veh Ci IV	FT	A	SS	Anchorage	200	17 L	12.0		77,832	0	0	47,480	125,312	16,291
08-5055		10481	Division Director	FT	A	XE	Anchorage	N00	27 F / J	12.0		126,984	0	0	65,429	192,413	14,431
08-5056		10482	Chf Wgts Meas & Permit	FT	A	SS	Anchorage	200	22 F	12.0		98,700	0	0	55,162	153,862	23,264
08-5058		10483	Administrative Assistant II	FT	A	GP	Anchorage	200	14 B / C	12.0		45,375	1,933	1,723	35,827	84,858	12,729
08-5059		10484	Office Assistant II	FT	A	GP	Anchorage	200	10 C / D	12.0		36,474	1,531	831	32,222	71,058	35,529
08-5060		10485	Secretary	FT	A	GP	Anchorage	200	11 J	12.0		45,132	1,852	0	35,103	82,087	12,313
08-5061		10486	Project Assistant	FT	A	GP	Anchorage	200	16 E / F	12.0		58,781	2,413	0	40,128	101,322	50,661
08-5062		10487	Administrative Officer I	FT	A	SS	Anchorage	200	17 A / B	12.0		64,980	0	0	42,749	107,729	10,773
08-5064		10488	Office Assistant II	FT	A	GP	Anchorage	200	10 G	12.0		40,608	1,705	936	33,783	77,032	38,516
08-5066		10490	Comm Veh Ci II	FT	A	GP	Anchorage	200	15 D / E	12.0		53,292	2,269	1,998	38,843	96,402	12,532
08-5067		10491	Comm Veh Ci III	FT	A	GP	Anchorage	200	16 A / B	12.0		50,861	2,087	0	37,212	90,160	11,721
08-5068		10492	Comm Veh Ci II	FT	A	GP	Anchorage	200	15 D / E	12.0		53,292	2,351	3,996	39,578	99,217	12,898
08-5069		10493	Comm Veh Ci II	FT	A	GP	Tok	200	15 O / P	12.0		70,127	3,094	5,252	46,237	124,710	16,212
08-5070		10494	Accounting Tech I	FT	A	GP	Anchorage	200	12 B / C	12.0		39,453	1,619	0	33,013	74,085	37,043
08-5071		10495	Comm Veh Ci I	FT	A	GP	Anchorage	200	13 B / C	12.0		41,979	1,723	0	33,943	77,645	10,094
08-5072		10496	Comm Veh Ci II	FT	A	GP	Fairbanks	203	15 G / J	12.0		59,153	2,428	0	40,265	101,846	13,240
08-5075		10498	Comm Veh Ci II	FT	A	GP	Fairbanks	203	15 A / B	12.0		48,822	2,004	0	36,462	87,288	11,347
08-5076		10499	Comm Veh Ci II	FT	A	GP	Fairbanks	203	15 A / B	12.0		48,304	1,983	0	36,271	86,558	11,253
08-5077		10500	Comm Veh Ci II	FT	A	GP	Fairbanks	203	15 C / D	12.0		52,224	2,262	2,883	38,775	96,144	12,499

Note: If a position is split, an asterisk (*) will appear in the Split/Count column. If the split position is also counted in the component, two asterisks (**) will appear in this column. [No valid job title] appearing in the Job Class Title indicates that the PCN has an invalid class code or invalid range for the class code effective date of this scenario.

Personal Services Expenditure Detail (1445)

Department of Transportation/Public Facilities

Scenario: FY2020 Governor Amended (15636)

Component: Measurement Standards & Commercial Vehicle Enforcement (2332)

RDU: Administration and Support (333)

Status	PCN	Tracking ID	Job Class Title	Time Status	Retire Code	Barg Unit	Location	Salary Sched	Range / Steps	Comp Months	Split / Count	Annual Salaries	COLA	Premium Pay	Annual Benefits	Total Costs	UGF Amount
08-5080		10501	Office Assistant II	FT	A	GP	Anchorage	200	10 B / C	12.0		35,816	1,503	803	31,970	70,092	35,046
08-5082		10502	Comm Veh Ci III	FT	A	GP	Tok	200	16 A / B	12.0		50,784	2,161	1,866	37,871	92,682	12,049
08-5083		10503	Comm Veh Ci III	FT	A	GP	Fairbanks	203	16 A / B	12.0		52,384	2,150	0	37,773	92,307	12,000
08-5084		10504	Comm Veh Ci I	FT	A	GP	Anchorage	200	13 B / C	12.0		41,979	1,723	0	33,943	77,645	10,094
08-5086		10505	Comm Veh Ci I	FT	A	GP	Anchorage	200	13 B / C	12.0		41,979	1,723	0	33,943	77,645	10,094
08-5087		10506	Comm Veh Ci I	FT	A	GP	Anchorage	200	13 B / C	12.0		41,979	1,723	0	33,943	77,645	10,094
08-5091		10507	Comm Veh Ci II	FT	A	GP	Fairbanks	203	15 E / F	12.0		55,146	2,327	1,543	39,358	98,374	12,789
08-5092		10508	Office Assistant II	FT	A	GP	Anchorage	200	10 B / C	12.0		35,767	1,501	803	31,952	70,023	35,012
08-5095		10509	Weights & Meas Insp Trne	FT	A	GP	Anchorage	200	12 A / B	12.0		38,803	1,737	3,519	34,069	78,128	
08-5096		10510	Weights & Meas Insp II	FT	A	GP	Anchorage	200	16 G	12.0		61,416	2,715	4,725	42,837	111,693	
08-5097		10511	Comm Veh Ci II	FT	A	GP	Fairbanks	203	15 A / B	12.0		49,044	2,013	0	36,543	87,600	11,388
12-1758		14383	Comm Veh Ci IV	FT	A	SS	Fairbanks	203	17 N / O	12.0		85,569	0	0	50,328	135,897	17,667
12-1760		14384	Comm Veh Ci II	FT	A	GP	Sterling	200	15 L / M	12.0		63,710	2,615	0	41,942	108,267	14,075
12-1761		14385	Comm Veh Ci I	FT	A	GP	Anchorage	200	13 B / C	12.0		41,979	1,723	0	33,943	77,645	10,094
25-0050		18676	Comm Veh Ci IV	FT	A	GP	Anchorage	200	17 A / B	12.0		54,879	2,252	0	38,691	95,822	14,373
25-3366		21107	Comm Veh Ci V	FT	A	SS	Anchorage	200	19 O / P	12.0		98,125	0	0	54,950	153,075	19,900
25-3369		21109	Comm Veh Ci II	FT	A	GP	Anchorage	200	15 D / E	12.0		53,292	2,187	0	38,107	93,586	12,166
25-3370		21110	Comm Veh Ci III	FT	A	GP	Fairbanks	203	16 A / B	12.0		52,384	2,150	0	37,773	92,307	12,000
25-3371		21111	Grants Administrator III	FT	A	GP	Anchorage	200	19 K	12.0		80,664	3,311	0	48,183	132,158	26,432
25-3372		21112	Comm Veh Ci I	FT	A	GP	Anchorage	200	13 B / C	12.0		41,979	1,723	0	33,943	77,645	10,094
25-3373		21113	Comm Veh Ci IV	FT	A	SS	Tok	200	17 F / J	12.0		70,800	0	0	44,892	115,692	15,040
25-3374		21114	Comm Veh Ci II	FT	A	GP	Tok	200	15 D / E	12.0		51,981	2,180	1,129	38,040	93,330	12,133
25-3375		21115	Comm Veh Ci II	FT	A	GP	Tok	200	15 A / B	12.0		46,824	2,064	3,474	37,005	89,367	11,618
25-3380		21119	State Metrologist I	FT	A	GP	Anchorage	200	16 J / K	12.0		64,825	2,661	0	42,352	109,838	
25-3383		21122	Program Coordinator II	FT	A	SS	Anchorage	200	20 D / E	12.0		82,400	0	0	49,162	131,562	13,156
25-3413		21151	Comm Veh Ci II	FT	A	GP	Anchorage	200	15 B / C	12.0		48,120	1,975	0	36,203	86,298	11,219
25-3483		21217	Research Analyst II	FT	A	GP	Anchorage	200	16 A / B	12.0		50,861	2,087	0	37,212	90,160	13,524
25-3597		21321	Comm Veh Ci II	FT	A	GP	Tok	200	15 C / D	12.0		50,706	2,145	1,555	37,728	92,134	11,977
25-3740		1230	Measure Standards Spvr	FT	A	SS	Anchorage	200	18 J	12.0		78,120	0	0	47,586	125,706	

Note: If a position is split, an asterisk (*) will appear in the Split/Count column. If the split position is also counted in the component, two asterisks (**) will appear in this column. [No valid job title] appearing in the Job Class Title indicates that the PCN has an invalid class code or invalid range for the class code effective date of this scenario.

Personal Services Expenditure Detail (1445)

Department of Transportation/Public Facilities

Scenario: FY2020 Governor Amended (15636)

Component: Measurement Standards & Commercial Vehicle Enforcement (2332)

RDU: Administration and Support (333)

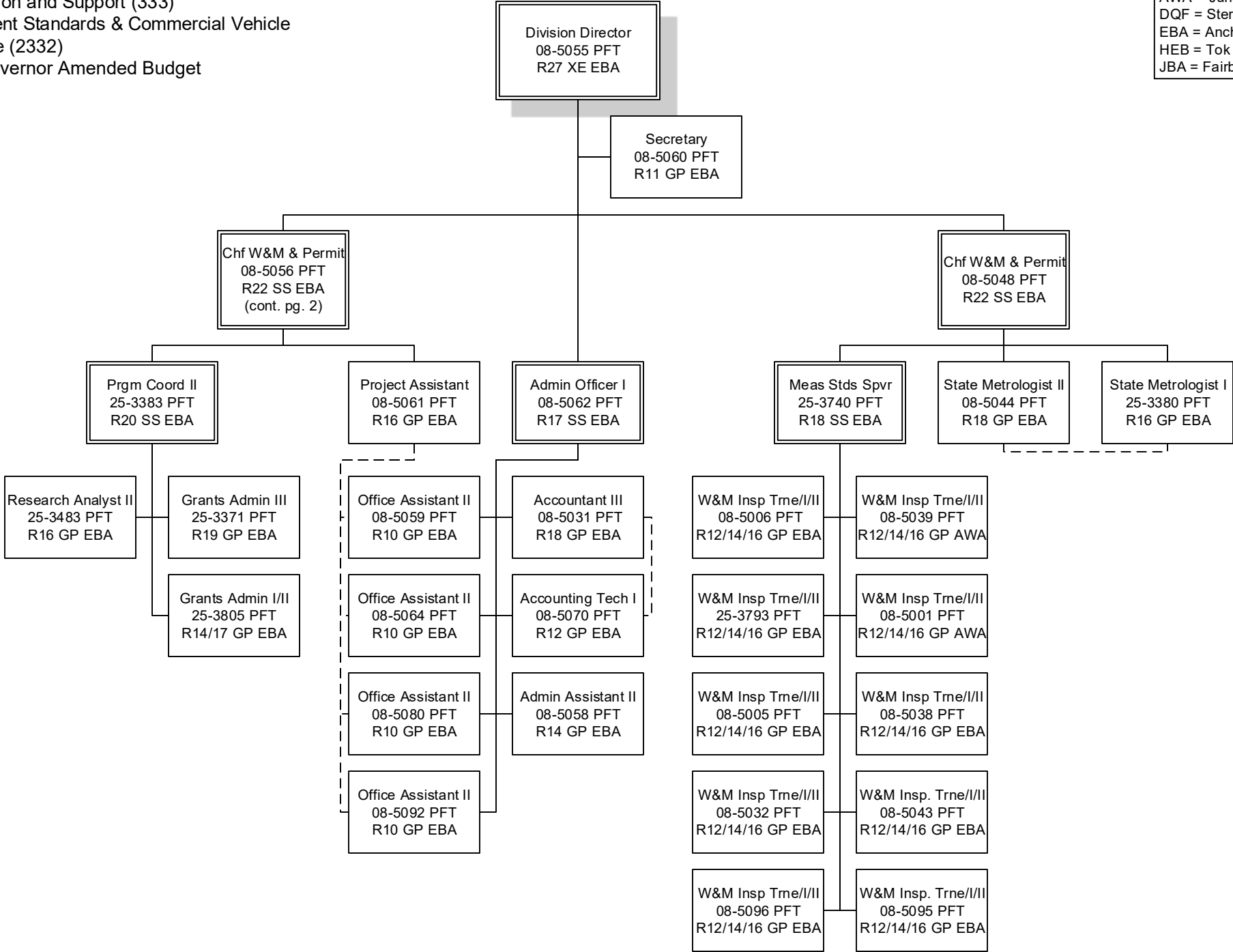
Status	PCN	Tracking ID	Job Class Title	Time Status	Retire Code	Barg Unit	Location	Salary Sched	Range / Steps	Comp Months	Split / Count	Annual Salaries	COLA	Premium Pay	Annual Benefits	Total Costs	UGF Amount
25-3793		2546	Weights & Meas Insp I	FT	A	GP	Anchorage	200	14 B / C	12.0		45,438	2,035	4,136	36,739	88,348	
25-3805		25624	Grants Administrator II	FT	A	GP	Anchorage	200	17 E / F	12.0		63,079	2,589	0	41,710	107,378	10,738
													Total Salary Costs:	3,463,691			
													Total COLA:	109,665			
													Total Premium Pay:	76,578			
													Total Benefits:	2,415,850			
													Total Pre-Vacancy:	6,065,784			
													Minus Vacancy Adjustment of 4.09%:	(248,084)			
													Total Post-Vacancy:	5,817,700			
													Plus Lump Sum Premium Pay:	0			
													Personal Services Line 100:	5,817,700			

	Total Positions	New	Deleted
Full Time Positions:	60	0	0
Part Time Positions:	0	0	0
Non Permanent Positions:	0	0	0
Positions in Component:	60	0	0
Total Component Months:	720.0		

PCN Funding Sources:	Pre-Vacancy	Post-Vacancy	Percent
1004 General Fund Receipts	759,856	728,779	12.53%
1005 General Fund/Program Receipts	2,544,719	2,440,642	41.95%
1039 U/A Indirect Cost Recovery	317,347	304,368	5.23%
1061 Capital Improvement Project Receipts	1,942,226	1,862,791	32.02%
1215 Uniform Commercial Registration fees	501,636	481,120	8.27%
Total PCN Funding:	6,065,784	5,817,700	100.00%

Note: If a position is split, an asterisk (*) will appear in the Split/Count column. If the split position is also counted in the component, two asterisks (**) will appear in this column. [No valid job title] appearing in the Job Class Title indicates that the PCN has an invalid class code or invalid range for the class code effective date of this scenario.

Legend
 AWA = Juneau
 DQF = Sterling
 EBA = Anchorage
 HEB = Tok
 JBA = Fairbanks



Legend
 AWA = Juneau
 DQF = Sterling
 EBA = Anchorage
 HEB = Tok
 JBA = Fairbanks

