

**Component Detail (1077)**  
**Department of Transportation/Public Facilities**

**Component:** Central Region Highways and Aviation (564)

Non-Formula Component

**RDU:** Highways, Aviation and Facilities (408)

IRIS AP Type: T08F

	FY2018 Actuals (15158)	FY2019 Conference Committee (14954)	FY2019 Authorized (14962)	FY2019 Management Plan (14994)	FY2020 Governor (15610)	FY2020 Governor Amended (15636)	FY2020 Governor vs FY2020 Governor Amended	
1000 Personal Services	19,341.2	19,296.6	19,296.6	19,296.6	19,693.9	19,296.6	-397.3	-2.0%
2000 Travel	110.6	61.4	61.4	61.4	61.4	14.1	-47.3	-77.0%
3000 Services	14,924.5	13,313.8	13,313.8	12,860.1	12,979.4	12,950.2	-29.2	-0.2%
4000 Commodities	6,724.8	8,602.8	8,602.8	8,602.8	8,602.8	8,602.8	0.0	0.0%
5000 Capital Outlay	1,233.1	5.0	5.0	5.0	5.0	5.0	0.0	0.0%
7000 Grants, Benefits	0.0	0.0	0.0	0.0	0.0	0.0	0.0	0.0%
8000 Miscellaneous	0.0	0.0	0.0	0.0	0.0	0.0	0.0	0.0%
<b>Totals</b>	<b>42,334.2</b>	<b>41,279.6</b>	<b>41,279.6</b>	<b>40,825.9</b>	<b>41,342.5</b>	<b>40,868.7</b>	<b>-473.8</b>	<b>-1.1%</b>
<b>Funding Sources:</b>								
1004 Gen Fund (UGF)	18,721.4	18,922.6	18,922.6	18,468.9	20,151.5	22,848.6	2,697.1	13.4%
1005 GF/Prgm (DGF)	92.7	348.9	348.9	348.9	354.8	348.9	-5.9	-1.7%
1007 I/A Rcpts (Other)	163.0	233.8	233.8	233.8	236.3	233.8	-2.5	-1.1%
1061 CIP Rcpts (Other)	6,605.2	4,056.1	4,056.1	4,056.1	4,142.6	4,036.5	-106.1	-2.6%
1108 Stat Desig (Other)	7.0	135.4	135.4	135.4	137.6	135.4	-2.2	-1.6%
1200 VehRntlTax (DGF)	4,999.2	4,999.2	4,999.2	4,999.2	4,999.2	1,580.4	-3,418.8	-68.4%
1239 AvFuel Tax (Other)	1,404.2	1,474.8	1,474.8	1,474.8	1,496.5	1,464.3	-32.2	-2.2%
1244 Rural Air (Other)	546.0	1,134.7	1,134.7	1,134.7	1,142.4	586.8	-555.6	-48.6%
1249 Motor Fuel (DGF)	9,795.5	9,974.1	9,974.1	9,974.1	8,681.6	9,634.0	952.4	11.0%
<b>Funding Totals:</b>								
<b>Unrestricted General (UGF)</b>	<b>18,721.4</b>	<b>18,922.6</b>	<b>18,922.6</b>	<b>18,468.9</b>	<b>20,151.5</b>	<b>22,848.6</b>	<b>2,697.1</b>	<b>13.4%</b>
<b>Designated General (DGF)</b>	<b>14,887.4</b>	<b>15,322.2</b>	<b>15,322.2</b>	<b>15,322.2</b>	<b>14,035.6</b>	<b>11,563.3</b>	<b>-2,472.3</b>	<b>-17.6%</b>
<b>Other</b>	<b>8,725.4</b>	<b>7,034.8</b>	<b>7,034.8</b>	<b>7,034.8</b>	<b>7,155.4</b>	<b>6,456.8</b>	<b>-698.6</b>	<b>-9.8%</b>
<b>Federal</b>	<b>0.0</b>	<b>0.0</b>	<b>0.0</b>	<b>0.0</b>	<b>0.0</b>	<b>0.0</b>	<b>0.0</b>	<b>0.0%</b>
<b>Positions:</b>								
Permanent Full Time	166	166	166	167	167	167	0	0.0%
Permanent Part Time	4	4	4	4	4	4	0	0.0%
Non Permanent	14	14	14	14	14	14	0	0.0%

**Change Record Detail - Multiple Scenarios with Descriptions (294)**  
**Department of Transportation/Public Facilities**

**Component:** Central Region Highways and Aviation (564)

**RDU:** Highways, Aviation and Facilities (408)

Scenario/Change Record Title	Trans Type	Totals	Personal Services	Travel	Services	Commodities	Capital Outlay	Grants, Benefits	Miscellaneous	PFT	PPT	NP
***** Changes From FY2019 Conference Committee To FY2019 Authorized *****												
<b>FY2019 Conference Committee</b>												
	ConfCom	41,279.6	19,296.6	61.4	13,313.8	8,602.8	5.0	0.0	0.0	166	4	14
1004 Gen Fund		18,922.6										
1005 GF/Prgm		348.9										
1007 I/A Rcpts		233.8										
1061 CIP Rcpts		4,056.1										
1108 Stat Desig		135.4										
1200 VehRntlTax		4,999.2										
1239 AvFuel Tax		1,474.8										
1244 Rural Air		1,134.7										
1249 Motor Fuel		9,974.1										
<b>Subtotal</b>		<b>41,279.6</b>	<b>19,296.6</b>	<b>61.4</b>	<b>13,313.8</b>	<b>8,602.8</b>	<b>5.0</b>	<b>0.0</b>	<b>0.0</b>	<b>166</b>	<b>4</b>	<b>14</b>
***** Changes From FY2019 Authorized To FY2019 Management Plan *****												
<b>Transfer to Northern Region Highways &amp; Aviation to Mitigate Impact of Prior Year Reductions</b>												
	Trout	-453.7	0.0	0.0	-453.7	0.0	0.0	0.0	0.0	0	0	0
1004 Gen Fund		-453.7										
Transfer authority to Northern Region Highways and Aviation to mitigate the impact of multiple prior year budget reductions.												
Funding is available to transfer due to efficiencies gained by divesting specialized equipment that is available for rent, and from region specific optional cost savings efforts such as lighting curfews, facility energy efficiencies, etc.												
This transfer allows the department to optimize available funding.												
<b>Transfer Supply Technician II (25-0256) from Central Region Support Services for Project Support</b>												
	Trin	0.0	0.0	0.0	0.0	0.0	0.0	0.0	0.0	1	0	0
Transfer full-time Supply Technician II (25-0256), range 12, SS (Supervisory), located in Anchorage from Central Region Support Services to function as a Project Assistant, range 16, GP (General), providing support on complex construction projects, Results Based Alignment, and the Agile Assets Maintenance Management system. The cost of this position will be covered by minimizing the budgeted premium pay and absorbing cost against vacancies.												
<b>Subtotal</b>		<b>40,825.9</b>	<b>19,296.6</b>	<b>61.4</b>	<b>12,860.1</b>	<b>8,602.8</b>	<b>5.0</b>	<b>0.0</b>	<b>0.0</b>	<b>167</b>	<b>4</b>	<b>14</b>
***** Changes From FY2019 Management Plan To FY2020 Governor Amended *****												
<b>Airport Maintenance Contracts and Insurance</b>												
	Inc	119.3	0.0	0.0	119.3	0.0	0.0	0.0	0.0	0	0	0
1004 Gen Fund		119.3										

The department has unstaffed rural airports whose maintenance and operations are provided via contracts. Work consists of routine summer and winter maintenance of the airport facilities, which includes Department of Transportation and Public Facilities owned maintenance equipment, building structures, and

**Change Record Detail - Multiple Scenarios with Descriptions (294)**  
**Department of Transportation/Public Facilities**

**Component:** Central Region Highways and Aviation (564)

**RDU:** Highways, Aviation and Facilities (408)

Scenario/Change Record Title	Trans Type	Totals	Personal Services	Travel	Services	Commodities	Capital Outlay	Grants, Benefits	Miscellaneous	Positions		
										PFT	PPT	NP

roadways located on airport property. Work areas include all state runways, taxiways, aprons, safety areas, state access roads, lighting systems, segmented circles, wind cones, and state buildings at the airports.

The department has experienced a steady increase in rural airport maintenance costs and cannot absorb the increase without reducing service levels elsewhere in the affected region.

FY2020 Projected Cost \$1,072.3  
 FY2020 Budget \$953.0  
 Shortfall \$119.3

**Replace Motor Fuel and Aviation Fuel Tax with Unrestricted General Fund to Avoid Potential Revenue Shortfall in Budget**

	FndChg	0.0	0.0	0.0	0.0	0.0	0.0	0.0	0.0	0	0	0
1004 Gen Fund		350.4										
1239 AvFuel Tax		-10.3										
1249 Motor Fuel		-340.1										

Fund Source Swap to UGF if Aviation Fuel Tax Collections and/or Motor Fuel Tax Collections are estimated to be insufficient.

Based on both aviation and motor fuel tax projections from Department of Revenue on 01/24/2019, an overall shortfall of funds is expected.

Aviation Fuel Tax (fund 1239) projections are \$4,743.0. DOT&PF FY2020 projected need is \$4,775.8. Shortfall estimate is \$(32.8). This is split between:  
 Central Region Highways and Aviation: \$(10.3)  
 Northern Region Highways and Aviation: \$(16.8)  
 Southcoast Region Highways and Aviation: \$(5.7)

Motor Fuel Tax (fund 1249) projections are \$35,761.0. DOT&PF FY2020 projected is \$36,993.1. Shortfall estimate is \$(1232.1). This is split between:  
 Central Region Highways and Aviation: \$(340.1)  
 Northern Region Highways and Aviation: \$(660.4)  
 Southcoast Region Highways and Aviation: \$(231.6)

**Reduce Cost of Rural Airport Maintenance**

	Dec	-21.3	0.0	0.0	-21.3	0.0	0.0	0.0	0.0	0	0	0
1004 Gen Fund		-21.3										

Reduce the cost of rural airport maintenance through divestiture or airport reclassification to backcountry. Ownership and/or management responsibility for some rural airports may be transferred to another entity.

**Replace Airport Leasing Receipts with Unrestricted General Fund to Avoid Potential Revenue Shortfall in Budget**

	FndChg	0.0	0.0	0.0	0.0	0.0	0.0	0.0	0.0	0	0	0
1004 Gen Fund		547.9										
1244 Rural Air		-547.9										

**Change Record Detail - Multiple Scenarios with Descriptions (294)**  
**Department of Transportation/Public Facilities**

**Component:** Central Region Highways and Aviation (564)

**RDU:** Highways, Aviation and Facilities (408)

Scenario/Change Record Title	Trans Type	Totals	Personal Services	Travel	Services	Commodities	Capital Outlay	Grants, Benefits	Miscellaneous	Positions		
										PFT	PPT	NP
Rural Airport Receipt (fund 1244) Authority is \$8,546.8 versus Projected Revenue of \$6,561.3. Revenue Shortfall is estimated to be \$(1,985.5).												
This is split between:												
Central Region Highways and Aviation: \$(547.9)												
Northern Region Highways and Aviation: \$(1097.1)												
Southcoast Region Highways and Aviation: \$(340.5)												
<b>Executive Branch 50% Travel Reduction</b>												
	Dec	-55.2	0.0	-47.3	-7.9	0.0	0.0	0.0	0.0	0	0	0
1004 Gen Fund		-35.4										
1061 CIP Rcpts		-19.6										
1239 AvFuel Tax		-0.2										
50% executive branch travel reduction based on actual costs of travel in FY2018. Exceptions were made to travel essential to public safety, health, and disaster management.												
<b>Replace a Portion of the Vehicle Rental Taxes With Undesignated General Funds to Avoid a Potential Revenue Shortfall</b>												
	FndChg	0.0	0.0	0.0	0.0	0.0	0.0	0.0	0.0	0	0	0
1004 Gen Fund		3,418.8										
1200 VehRntlTax		-3,418.8										
Replace a portion of the vehicle rental taxes with undesignated general funds to avoid a potential revenue shortfall.												
<b>Totals</b>		<b>40,868.7</b>	<b>19,296.6</b>	<b>14.1</b>	<b>12,950.2</b>	<b>8,602.8</b>	<b>5.0</b>	<b>0.0</b>	<b>0.0</b>	<b>167</b>	<b>4</b>	<b>14</b>

## Personal Services Expenditure Detail (1445)

### Department of Transportation/Public Facilities

Scenario: FY2020 Governor Amended (15636)  
 Component: Central Region Highways and Aviation (564)  
 RDU: Highways, Aviation and Facilities (408)

Status PCN	Tracking ID	Job Class Title	Time Status	Retire Code	Barg Unit	Location	Salary Sched	Range / Steps	Comp Months	Split / Count	Annual Salaries	COLA	Premium Pay	Annual Benefits	Total Costs	UGF Amount
25-0256	18820	Project Assistant	FT	A	GP	Anchorage	200	16 A / B	12.0		50,706	2,270	4,595	38,847	96,418	77,134
25-0549	19064	Maint Spec Etrician Journey II	FT	A	LL	Palmer	2BB	51 J	12.0		69,479	0	11,275	48,112	128,866	74,742
25-0565	19076	Maint Spec Etrician Journey II	FT	A	LL	Soldotna	2CC	51 B / C	12.0		61,346	0	8,583	44,127	114,056	74,136
25-0569	19077	Office Assistant II	FT	A	GP	Homer	200	10 E / F	12.0		38,464	1,579	0	32,649	72,692	61,788
25-0697	19179	Engineering Assistant III	FT	A	GP	Anchorage	200	21 E / F	12.0		81,999	3,365	0	48,674	134,038	67,019
25-0935	19313	Office Assistant II	FT	A	GP	Palmer	200	10 K / L	12.0		44,022	1,807	0	34,695	80,524	64,419
25-0974	19336	Maint & Operations Super	FT	A	SS	Anchorage	200	21 L	12.0		102,054	0	0	56,396	158,450	68,926
25-0977	19337	Maint & Operations Super	FT	A	SS	Soldotna	2S2	21 P	12.0		122,070	0	0	63,764	185,834	163,534
25-0979	19338	Accounting Tech II	FT	A	GP	Palmer	200	14 K / L	12.0		57,867	2,375	0	39,791	100,033	85,028
25-0980	19339	Office Assistant II	FT	A	GP	Anchorage	200	10 M	12.0		46,770	1,920	0	35,706	84,396	71,737
25-0981	19340	Maint & Operations Super	FT	A	SS	Anchorage	200	21 L	12.0		102,054	0	0	56,396	158,450	126,760
25-0982	19341	Equip Operator Journey II	FT	A	LL	Anchorage	2AA	53 O	12.0		72,724	0	9,179	48,535	130,438	84,785
25-0983	19342	Office Assistant II	FT	A	GP	Soldotna	200	10 B / C	12.0		35,620	1,462	0	31,602	68,684	51,513
25-0985	19344	Equip Operator Journey II	FT	A	LL	Palmer	2BB	53 C / D	12.0		53,879	0	6,762	40,708	101,349	70,944
25-0992	19351	Maint & Operations Manager	FT	A	SS	Anchorage	200	23 P	12.0		135,535	0	0	68,559	204,094	142,866
25-0997	19356	Equip Operator Journey II	FT	A	LL	Anchorage	2AA	53 E / F	12.0		57,510	0	9,226	42,952	109,688	98,719
25-0998	19357	Equip Operator Journey II	FT	A	LL	Soldotna	2CC	53 N / O	12.0		74,242	0	10,498	49,579	134,319	107,455
25-1000	19359	Equipment Operator Foreman I	FT	A	LL	Aniak	2JJ	51 F	12.0		74,866	0	10,800	49,920	135,586	6,508
25-1003	19361	Maint & Operations Specialist	FT	A	GP	Anchorage	200	21 J / K	12.0		91,130	3,740	0	52,035	146,905	88,143
25-1004	19362	Rural Airport Foreman	FT	A	LL	Bethel	2II	49 M / N	12.0		93,617	0	6,825	55,359	155,801	15,580
25-1005	19363	Equip Operator Jrny III/Lead	FT	A	LL	Bethel	2II	52 A / B	12.0		61,327	0	6,825	43,473	111,625	11,163
25-1006	19364	Equip Operator Jrny III/Lead	FT	A	LL	Bethel	2II	52 B / C	12.0		62,322	0	6,825	43,839	112,986	11,299
25-1007	19365	Maint Spec Etrician Journey II	FT	A	LL	Anchorage	2AA	51 E	12.0		63,802	0	11,505	46,107	121,414	91,061
25-1008	19366	Maint Spec Etrician Journey II	FT	A	LL	Anchorage	2AA	51 K	12.0		71,081	0	10,254	48,326	129,661	77,797
25-1009	19367	Equip Operator Journey I	FT	A	LL	Anchorage	2AA	54 C / D	12.0		50,233	0	8,973	40,180	99,386	64,601
25-1010	19368	Accounting Tech II	FT	A	GG	Soldotna	200	14 N / O	12.0		65,446	2,686	0	42,581	110,713	88,570
25-1012	19370	Equipment Operator Foreman I	FT	A	LL	Soldotna	2CC	51 O	12.0		84,307	0	12,162	53,897	150,366	135,329
25-1013	19371	Equip Operator Journey II	FT	A	LL	Quartz Creek	2CC	53 C / D	12.0		54,934	0	9,914	42,257	107,105	85,684
25-1017	19373	Equip Operator Jrny III/Lead	FT	A	LL	Homer	2CC	52 B / C	12.0		57,293	0	0	39,476	96,769	9,677

Note: If a position is split, an asterisk (\*) will appear in the Split/Count column. If the split position is also counted in the component, two asterisks (\*\*) will appear in this column.  
 [No valid job title] appearing in the Job Class Title indicates that the PCN has an invalid class code or invalid range for the class code effective date of this scenario.

## Personal Services Expenditure Detail (1445)

### Department of Transportation/Public Facilities

**Scenario:** FY2020 Governor Amended (15636)  
**Component:** Central Region Highways and Aviation (564)  
**RDU:** Highways, Aviation and Facilities (408)

Status	PCN	Tracking ID	Job Class Title	Time Status	Retire Code	Barg Unit	Location	Salary Sched	Range / Steps	Comp Months	Split / Count	Annual Salaries	COLA	Premium Pay	Annual Benefits	Total Costs	UGF Amount
25-1018		19374	Equip Operator Journey II	FT	A	LL	North Kenai Camp	2CC	53 K	12.0		64,738	0	11,766	46,547	123,051	98,441
25-1019		19375	Equip Operator Journey II	FT	A	LL	Ninilchik	2CC	53 C / D	12.0		56,245	0	10,897	43,101	110,243	88,194
25-1020		19376	Equip Operator Journey II	FT	A	LL	Soldotna	2CC	53 C / D	12.0		55,088	0	8,852	41,923	105,863	74,104
25-1021		19377	Maint Spec Etrician Journey II	FT	A	LL	Soldotna	2CC	51 N / O	12.0		84,059	0	10,266	53,107	147,432	88,459
25-1022		19378	Equip Operator Journey II	FT	A	LL	Soldotna	2CC	53 J / K	12.0		63,699	0	10,138	45,566	119,403	95,522
25-1025		19381	Equip Operator Journey II	FT	A	LL	Silvertip	2CC	53 F	12.0		60,288	0	9,784	44,180	114,252	101,684
25-1026		19382	Equip Operator Jrny III/Lead	FT	A	LL	Soldotna	2CC	52 M	12.0		74,304	0	9,379	49,190	132,873	76,402
25-1030		19386	Equip Operator Journey II	FT	A	LL	Anchorage	2AA	53 L / M	12.0		66,451	0	10,663	46,772	123,886	92,915
25-1036		19392	Administrative Assistant II	FT	A	GP	Anchorage	200	14 G / J	12.0		53,664	2,203	0	38,244	94,111	75,289
25-1037		19393	Equip Operator Journey II	FT	A	LL	Palmer	2BB	53 B / C	12.0		52,527	0	9,411	41,186	103,124	80,437
25-1038		19394	Rural Airport Foreman	FT	A	LL	Dillingham	2II	49 P	12.0		102,025	0	0	55,942	157,967	15,797
25-1039		19395	Equip Operator Jrny III/Lead	FT	A	LL	Dillingham	2II	52 M	12.0		80,210	0	0	47,912	128,122	12,812
25-1041		19397	Equip Operator Jrny III/Lead	FT	A	LL	Silvertip	2CC	52 O / P	12.0		81,513	0	11,514	52,630	145,657	116,526
25-1042		19398	Equip Operator Journey II	FT	A	LL	Silvertip	2CC	53 C	12.0		54,548	0	8,852	41,724	105,124	84,099
25-1044		19400	Equip Operator Journey II	FT	A	LL	Girdwood	2AA	53 N / O	12.0		72,505	0	10,113	48,798	131,416	72,279
25-1045		19401	Equip Operator Journey II	FT	A	LL	Silvertip	2CC	53 F / J	12.0		61,652	0	8,697	44,282	114,631	91,705
25-1046		19402	Equipment Operator Foreman I	FT	A	LL	Palmer	2BB	51 P	12.0		86,428	0	12,468	54,790	153,686	130,633
25-1047		19403	Equip Operator Journey II	FT	A	LL	Palmer	2BB	53 M	12.0		68,544	0	11,222	47,748	127,514	108,387
25-1048		19404	Equip Operator Journey II	FT	A	LL	Palmer	2BB	53 O	12.0		73,701	0	10,632	49,429	133,762	100,322
25-1050		19405	Equip Operator Journey II	FT	A	LL	Chulitna	2CC	53 L / M	12.0		68,609	0	10,887	47,649	127,145	113,159
25-1051		19406	Equip Operator Jrny III/Lead	FT	A	LL	Dillingham	2II	52 C / D	12.0		65,473	0	0	42,487	107,960	10,796
25-1052		19407	Equip Operator Journey II	FT	A	LL	Palmer	2BB	53 K	12.0		63,761	0	11,497	46,089	121,347	103,145
25-1053		19408	Equip Operator Journey II	FT	A	LL	Palmer	2BB	53 A / B	12.0		51,638	0	7,221	40,052	98,911	84,074
25-1055		19409	Equip Operator Jrny III/Lead	FT	A	LL	Palmer	2BB	52 O	12.0		78,838	0	9,951	51,070	139,859	104,894
25-1056		19410	Equip Operator Journey II	FT	A	LL	Palmer	2BB	53 O	12.0		73,701	0	9,303	48,940	131,944	112,152
25-1057		19411	Equip Operator Journey II	FT	A	LL	Palmer	2BB	53 F	12.0		59,310	0	10,780	44,186	114,276	91,421
25-1058		19412	Equip Operator Jrny III/Lead	FT	A	LL	Homer	2CC	52 L	12.0		71,684	0	10,341	48,580	130,605	104,484
25-1060		19414	Equip Operator Jrny III/Lead	FT	A	LL	Homer	2CC	52 J / K	12.0		66,836	0	0	42,989	109,825	
25-1061		19415	Equip Operator Journey II	FT	A	LL	Homer	2CC	53 O	12.0		74,678	0	10,773	49,841	135,292	108,234

Note: If a position is split, an asterisk (\*) will appear in the Split/Count column. If the split position is also counted in the component, two asterisks (\*\*) will appear in this column.  
 [No valid job title] appearing in the Job Class Title indicates that the PCN has an invalid class code or invalid range for the class code effective date of this scenario.

## Personal Services Expenditure Detail (1445)

### Department of Transportation/Public Facilities

Scenario: FY2020 Governor Amended (15636)  
 Component: Central Region Highways and Aviation (564)  
 RDU: Highways, Aviation and Facilities (408)

Status	PCN	Tracking ID	Job Class Title	Time Status	Retire Code	Barg Unit	Location	Salary Sched	Range / Steps	Comp Months	Split / Count	Annual Salaries	COLA	Premium Pay	Annual Benefits	Total Costs	UGF Amount
25-1062		19416	Equip Operator Journey II	FT	A	LL	Homer	2CC	53 E / F	12.0		59,547	0	10,598	44,207	114,352	91,482
25-1064		19418	Equip Operator Journey II	FT	A	LL	Soldotna	2CC	53 K / L	12.0		65,228	0	10,598	46,298	122,124	97,699
25-1065		19419	Equip Operator Journey II	FT	A	LL	Homer	2CC	53 F	12.0		60,288	0	10,957	44,612	115,857	92,686
25-1066		19420	Equip Operator Jrny III/Lead	FT	A	LL	Homer	2CC	52 K	12.0		69,168	0	2,593	44,802	116,563	
25-1067		19421	Equip Operator Journey II	FT	A	LL	Homer	2CC	53 J / K	12.0		64,266	0	9,012	45,360	118,638	94,910
25-1068		19422	Equip Operator Jrny III/Lead	FT	A	LL	Anchorage	2AA	52 N	12.0		75,053	0	12,016	50,436	137,505	96,254
25-1070		19423	Equipment Operator Foreman I	FT	A	LL	Palmer	2BB	51 F	12.0		67,005	0	9,666	46,609	123,280	98,624
25-1071		19424	Equip Operator Journey II	FT	A	LL	Anchorage	2AA	53 N	12.0		70,103	0	8,848	47,448	126,399	101,119
25-1072		19425	Equip Operator Journey II	FT	A	LL	Anchorage	2AA	53 J	12.0		60,516	0	8,730	43,876	113,122	90,498
25-1073		19426	Equip Operator Journey II	FT	A	LL	Anchorage	2AA	53 E / F	12.0		58,168	0	8,130	42,791	109,089	87,271
25-1075		19427	Equip Operator Journey I	FT	A	LL	Anchorage	2AA	54 C / D	12.0		50,664	0	8,973	40,339	99,976	74,982
25-1076		19428	Equip Operator Journey II	FT	A	LL	Soldotna	2CC	53 J	12.0		62,471	0	9,012	44,699	116,182	92,946
25-1077		19429	Equip Operator Journey II	FT	A	LL	Anchorage	2AA	53 J / K	12.0		61,744	0	8,730	44,328	114,802	97,582
25-1078		19430	Equip Operator Journey I	FT	A	LL	Anchorage	2AA	54 D / E	12.0		52,363	0	8,292	40,713	101,368	91,231
25-1079		19431	Equip Operator Journey I	FT	A	LL	Anchorage	2AA	54 F / J	12.0		55,936	0	9,948	42,638	108,522	86,818
25-1080		19432	Equip Operator Journey II	FT	A	LL	Silvertip	2CC	53 F	12.0		60,288	0	9,784	44,180	114,252	97,114
25-1081		19433	Equip Operator Journey I	FT	A	LL	Anchorage	2AA	54 J	12.0		56,794	0	10,241	43,062	110,097	88,078
25-1082		19434	Equip Operator Journey II	FT	A	LL	Anchorage	2AA	53 P	12.0		75,448	0	9,523	49,664	134,635	107,708
25-1083		19435	Equip Operator Journey II	FT	A	LL	Anchorage	2AA	53 M	12.0		67,566	0	9,747	46,845	124,158	93,119
25-1084		19436	Equip Operator Journey I	FT	A	LL	Anchorage	2AA	54 C / D	12.0		50,880	0	8,973	40,418	100,271	80,217
25-1085		19437	Equip Operator Jrny III/Lead	FT	A	LL	Bethel	2II	52 B / C	12.0		63,757	0	6,825	44,368	114,950	
25-1086		19438	Equip Operator Journey I	FT	A	LL	Anchorage	2AA	54 F	12.0		54,735	0	10,935	42,559	108,229	86,583
25-1087		19439	Equip Operator Jrny III/Lead	FT	A	LL	Dillingham	2II	52 J	12.0		72,640	0	0	45,125	117,765	11,777
25-1088		19440	Equip Operator Jrny III/Lead	FT	A	LL	Anchorage	2AA	52 L / M	12.0		70,166	0	10,158	47,954	128,278	89,795
25-1089		19441	Equip Operator Journey II	FT	A	LL	Anchorage	2AA	53 N	12.0		70,103	0	10,212	47,950	128,265	102,612
25-1090		19442	Equipment Operator Foreman II	FT	A	LL	Anchorage	2AA	50 O / P	12.0		86,792	0	9,375	53,785	149,952	112,464
25-1091		19443	Equip Operator Journey II	FT	A	LL	Crown Point	2CC	53 M / N	12.0		71,635	0	10,128	48,483	130,246	117,221
25-1094		19444	Equip Operator Jrny III/Lead	FT	A	LL	Seldovia	2CC	52 P	12.0		82,726	0	11,934	53,231	147,891	133,102
25-1096		19446	Equip Operator Jrny III/Lead	FT	A	LL	Girdwood	2AA	52 N / O	12.0		75,521	0	10,827	50,171	136,519	75,085

Note: If a position is split, an asterisk (\*) will appear in the Split/Count column. If the split position is also counted in the component, two asterisks (\*\*) will appear in this column.  
 [No valid job title] appearing in the Job Class Title indicates that the PCN has an invalid class code or invalid range for the class code effective date of this scenario.

## Personal Services Expenditure Detail (1445)

### Department of Transportation/Public Facilities

Scenario: FY2020 Governor Amended (15636)  
 Component: Central Region Highways and Aviation (564)  
 RDU: Highways, Aviation and Facilities (408)

Status	PCN	Tracking ID	Job Class Title	Time Status	Retire Code	Barg Unit	Location	Salary Sched	Range / Steps	Comp Months	Split / Count	Annual Salaries	COLA	Premium Pay	Annual Benefits	Total Costs	UGF Amount
25-1097	19447	Equip Operator	Journey II	FT	A	LL	Girdwood	2AA	53 C / D	12.0		53,133	0	7,587	40,737	101,457	65,947
25-1098	19448	Equip Operator	Journey II	FT	A	LL	Girdwood	2AA	53 A / B	12.0		50,517	0	7,080	39,588	97,185	68,030
25-1099	19449	Equip Operator	Journey II	FT	A	LL	Girdwood	2AA	53 F / J	12.0		58,606	0	8,415	43,057	110,078	55,039
25-1100	19450	Equip Operator	Jrny III/Lead	FT	A	LL	Willow	2CC	52 N / O	12.0		77,709	0	12,497	51,591	141,797	
25-1101	19451	Equip Operator	Journey II	FT	A	LL	Willow	2CC	53 L / M	12.0		69,217	0	10,887	47,873	127,977	108,780
25-1102	19452	Maint Spec	Etrician Journey II	FT	A	LL	Palmer	2BB	51 D / E	12.0		63,698	0	6,774	44,327	114,799	91,839
25-1103	19453	Equip Operator	Journey II	FT	A	LL	Willow	2CC	53 N / O	12.0		74,460	0	9,095	49,143	132,698	112,793
25-1104	19454	Equip Operator	Jrny III/Lead	FT	A	LL	Chulitna	2CC	52 J	12.0		66,734	0	9,627	46,495	122,856	92,142
25-1105	19455	Equip Operator	Journey II	FT	A	LL	Palmer	2BB	53 O / P	12.0		75,744	0	9,303	49,692	134,739	107,791
25-1106	19456	Equip Operator	Journey II	FT	A	LL	Talkeetna	2CC	53 A / B	12.0		52,328	0	8,282	40,697	101,307	81,046
25-1107	19457	Equip Operator	Journey II	FT	A	LL	Chulitna	2CC	53 K / L	12.0		66,598	0	10,506	46,768	123,872	99,098
25-1108	19458	Equip Operator	Journey II	FT	A	LL	Chulitna	2CC	53 L	12.0		67,088	0	10,887	47,089	125,064	106,304
25-1109	19459	Equip Operator	Jrny III/Lead	FT	A	LL	Cascade	2CC	52 L	12.0		71,684	0	11,633	49,055	132,372	99,279
25-1110	19460	Equip Operator	Journey II	FT	A	LL	Cascade	2CC	53 O	12.0		74,678	0	12,119	50,336	137,133	116,563
25-1111	19461	Equip Operator	Journey II	FT	A	LL	Cascade	2CC	53 N / O	12.0		73,259	0	10,395	49,179	132,833	106,266
25-1112	19462	Equip Operator	Journey II	FT	A	LL	Cascade	2CC	53 C / D	12.0		56,245	0	8,852	42,348	107,445	85,956
25-1115	19464	Equip Operator	Jrny III/Lead	FT	A	LL	North Kenai Camp	2CC	52 L	12.0		71,684	0	9,048	48,104	128,836	103,069
25-1118	19466	Equip Operator	Jrny III/Lead	FT	A	LL	Crown Point	2CC	52 N / O	12.0		78,645	0	12,497	51,936	143,078	114,462
25-1119	19467	Equip Operator	Journey II	FT	A	LL	Crown Point	2CC	53 N / O	12.0		74,460	0	0	45,795	120,255	90,191
25-1120	19468	Equip Operator	Journey II	FT	A	LL	Soldotna	2CC	53 O	12.0		74,678	0	13,573	50,871	139,122	111,298
25-1121	19469	Equip Operator	Journey II	FT	A	LL	Crown Point	2CC	53 B / C	12.0		54,026	0	8,562	41,425	104,013	83,210
25-1122	19470	Equip Operator	Jrny III/Lead	FT	A	LL	Quartz Creek	2CC	52 N / O	12.0		79,113	0	11,109	51,597	141,819	113,455
25-1123	19471	Equip Operator	Journey II	FT	A	LL	Anchorage	2AA	53 O	12.0		72,724	0	10,491	49,018	132,233	105,786
25-1124	19472	Equip Operator	Journey II	FT	A	LL	Quartz Creek	2CC	53 K / L	12.0		66,207	0	9,339	46,195	121,741	97,393
25-1126	19473	Equip Operator	Journey II	FT	A	LL	Soldotna	2CC	53 O	12.0		74,678	0	10,773	49,841	135,292	108,234
25-1127	19474	Equip Operator	Jrny III/Lead	FT	A	LL	Ninilchik	2CC	52 F / J	12.0		65,951	0	9,288	46,082	121,321	97,057
25-1128	19475	Equip Operator	Journey II	FT	A	LL	Homer	2CC	53 N	12.0		72,058	0	10,395	48,737	131,190	104,952
25-1129	19476	Equip Operator	Journey II	FT	A	LL	Palmer	2BB	53 D / E	12.0		55,660	0	9,993	42,553	108,206	86,565
25-1130	19477	Equip Operator	Journey II	FT	A	LL	Ninilchik	2CC	53 B / C	12.0		53,281	0	8,562	41,151	102,994	82,395

Note: If a position is split, an asterisk (\*) will appear in the Split/Count column. If the split position is also counted in the component, two asterisks (\*\*) will appear in this column.  
 [No valid job title] appearing in the Job Class Title indicates that the PCN has an invalid class code or invalid range for the class code effective date of this scenario.



## Personal Services Expenditure Detail (1445)

### Department of Transportation/Public Facilities

Scenario: FY2020 Governor Amended (15636)  
 Component: Central Region Highways and Aviation (564)  
 RDU: Highways, Aviation and Facilities (408)

Status	PCN	Tracking ID	Job Class Title	Time Status	Retire Code	Barg Unit	Location	Salary Sched	Range / Steps	Comp Months	Split / Count	Annual Salaries	COLA	Premium Pay	Annual Benefits	Total Costs	UGF Amount
25-1133	19479	Equip Operator Jrny III/Lead	FT	A	LL	Anchorage	2AA	52	N / O	12.0		76,690	0	10,827	50,601	138,118	96,683
25-1134	19480	Equip Operator Journey II	FT	A	LL	Anchorage	2AA	53	O / P	12.0		73,518	0	13,218	50,314	137,050	109,640
25-1135	19481	Equip Operator Journey I	FT	A	LL	Anchorage	2AA	54	B / C	12.0		49,023	0	7,742	39,281	96,046	76,837
25-1136	19482	Equip Operator Journey II	FT	A	LL	Anchorage	2AA	53	K / L	12.0		64,252	0	10,189	45,788	120,229	72,137
25-1137	19483	Equip Operator Journey II	FT	A	LL	Anchorage	2AA	53	F	12.0		58,333	0	10,602	43,761	112,696	87,495
25-1138	19484	Equip Operator Journey II	FT	A	LL	Anchorage	2AA	53	K / L	12.0		62,881	0	9,146	44,899	116,926	87,695
25-1141	19487	Equipment Operator Foreman II	FT	A	LL	Homer	2CC	50	O / P	12.0		90,369	0	0	51,651	142,020	99,414
25-1142	19488	Equip Operator Journey II	FT	A	LL	Anchorage	2AA	53	L / M	12.0		66,755	0	9,396	46,417	122,568	110,311
25-1143	19489	Equip Operator Jrny III/Lead	FT	A	LL	Talkeetna	2CC	52	K / L	12.0		69,377	0	9,978	47,597	126,952	
25-1144	19490	Equip Operator Jrny III/Lead	FT	A	LL	Dillingham	2II	52	B / C	12.0		63,040	0	0	41,591	104,631	10,463
25-1145	19491	Equip Operator Jrny III/Lead	FT	A	LL	Dillingham	2II	52	C / D	12.0		65,308	0	0	42,426	107,734	21,547
25-1146	19492	Equip Operator Journey II	FT	A	LL	Anchorage	2AA	53	P	12.0		75,448	0	10,884	50,165	136,497	109,198
25-1150	19495	Equipment Operator Foreman I	FT	A	LL	Mcgrath	2JJ	51	M	12.0		85,347	0	13,851	54,901	154,099	15,410
25-1152	19496	Equip Operator Journey II	FT	A	LL	Aniak	2JJ	53	C / D	12.0		62,820	0	8,862	44,772	116,454	11,645
25-1153	19497	Equip Operator Journey II	FT	A	LL	North Kenai Camp	2CC	53	K	12.0		64,738	0	9,339	45,654	119,731	95,785
25-1156	19498	Office Assistant II	FT	A	GP	Dillingham	237	10	E / F	12.0		53,488	2,195	0	38,179	93,862	65,703
25-1161	19500	Equip Operator Journey I	FT	A	LL	Anchorage	2AA	54	B / C	12.0		48,815	0	7,742	39,205	95,762	76,610
25-1162	19501	Equip Operator Journey II	FT	A	LL	Anchorage	2AA	53	F / J	12.0		58,970	0	8,415	43,191	110,576	88,461
25-1165	19503	Equip Operator Journey II	FT	A	LL	Palmer	2BB	53	K / L	12.0		65,131	0	10,347	46,170	121,648	97,318
25-1166	19504	Equip Operator Journey II	FT	A	LL	Palmer	2BB	53	O	12.0		73,701	0	13,395	50,446	137,542	110,034
25-1167	19505	Equip Operator Journey II	FT	A	LL	Willow	2CC	53	F	12.0		60,288	0	9,784	44,180	114,252	97,114
25-1169	19506	Administrative Assistant II	FT	A	GP	Anchorage	200	14	B / C	12.0		45,312	1,860	0	35,170	82,342	69,991
25-1177	19514	Equip Operator Journey II	FT	A	LL	Ninilchik	2CC	53	E / F	12.0		59,711	0	9,463	43,849	113,023	90,418
25-1182	19518	Safety & Emerg Supp Spec	FT	A	GP	Anchorage	200	17	F / G	12.0		64,829	2,661	0	42,354	109,844	109,844
25-1185	19521	Office Assistant II	FT	A	GP	Bethel	250	10	J / K	12.0		65,335	2,682	0	42,540	110,557	99,501
25-1187	19523	Maint & Operations Super	FT	A	SS	Palmer	200	21	J / K	12.0		98,235	0	0	54,991	153,226	122,581
25-1207	19540	Accounting Tech III	FT	A	GP	Anchorage	200	16	B / C	12.0		51,705	2,122	0	37,523	91,350	73,080
25-1214	19543	Office Assistant II	FT	A	GP	Anchorage	200	10	F / G	12.0		39,508	1,622	0	33,033	74,163	66,747
25-1216	19544	Administrative Officer II	FT	A	SS	Anchorage	200	19	C / D	12.0		74,628	0	0	46,301	120,929	96,743

Note: If a position is split, an asterisk (\*) will appear in the Split/Count column. If the split position is also counted in the component, two asterisks (\*\*) will appear in this column.  
 [No valid job title] appearing in the Job Class Title indicates that the PCN has an invalid class code or invalid range for the class code effective date of this scenario.

**Personal Services Expenditure Detail (1445)**

**Department of Transportation/Public Facilities**

**Scenario:** FY2020 Governor Amended (15636)  
**Component:** Central Region Highways and Aviation (564)  
**RDU:** Highways, Aviation and Facilities (408)

Status	PCN	Tracking ID	Job Class Title	Time Status	Retire Code	Barg Unit	Location	Salary Sched	Range / Steps	Comp Months	Split / Count	Annual Salaries	COLA	Premium Pay	Annual Benefits	Total Costs	UGF Amount
25-1217	19545	Engineer/Architect IV	FT	A	SS	Anchorage	200	26 C / D	12.0	116,229	0	0	61,614	177,843	160,059		
25-3052	20932	Equip Operator Journey II	FT	A	LL	Willow	2CC	53 L	12.0	67,088	0	9,678	46,644	123,410	111,069		
25-3429	21166	Equip Operator Journey II	FT	A	LL	Soldotna	2CC	53 M	12.0	69,521	0	11,382	48,167	129,070	103,256		
25-3430	21167	Equip Operator Journey II	FT	A	LL	Soldotna	2CC	53 O	12.0	74,678	0	10,773	49,841	135,292	108,234		
25-3431	21168	Equip Operator Journey II	FT	A	LL	Quartz Creek	2CC	53 K	12.0	64,738	0	10,598	46,117	121,453	97,162		
25-3432	21169	Equip Operator Journey II	FT	A	LL	Girdwood	2AA	53 B / C	12.0	51,997	0	8,245	40,561	100,803	72,178		
25-3433	21170	Equip Operator Journey II	FT	A	LL	Girdwood	2AA	53 F / J	12.0	59,970	0	8,415	43,559	111,944	82,839		
25-3434	21171	Equip Operator Jrny III/Lead	FT	A	LL	Anchorage	2AA	52 L / M	12.0	72,349	0	10,437	48,860	131,646	92,152		
25-3573	21297	Airport Operations Specialist	FT	A	SS	Bethel	250	19 F / J	12.0	122,489	0	0	63,918	186,407	95,647		
25-3592	21316	Maint & Operations Specialist	FT	A	GP	Anchorage	200	21 J	12.0	89,436	3,671	0	51,412	144,519	72,260		
25-3639	21357	Equip Operator Jrny III/Lead	FT	A	LL	Bethel	2II	52 K / L	12.0	77,275	0	6,825	49,343	133,443	13,344		
25-3649	21367	Equip Operator Journey II	FT	A	LL	Chulitna	2CC	53 A / B	12.0	52,472	0	7,362	40,411	100,245	70,172		
25-3717	21419	Equip Operator Jrny III/Lead	FT	A	LL	Dillingham	2II	52 C / D	12.0	65,308	0	0	42,426	107,734	21,547		
25-3773	2506	Equip Operator Journey II	FT	A	LL	Palmer	2BB	53 C / D	12.0	54,033	0	8,694	41,476	104,203	88,573		
25-3774	2513	Equip Operator Journey II	FT	A	LL	Palmer	2BB	53 A / B	12.0	51,494	0	8,123	40,331	99,948	84,956		
25-3781	2433	Environ Impact Analyst III	FT	A	GP	Anchorage	200	19 G / J	12.0	75,380	3,094	0	46,238	124,712	62,356		
25-3782	24435	Equip Operator Journey I	PT	A	LL	Anchorage	2AA	54 B / C	6.0	24,130	0	0	18,075	42,205	33,764		
25-3783	24436	Equip Operator Journey I	PT	A	LL	Anchorage	2AA	54 D / E	6.0	26,219	0	0	18,844	45,063	36,050		
25-3785	24438	Equip Operator Journey I	PT	A	LL	Anchorage	2AA	54 F	6.0	27,368	0	0	19,267	46,635	37,308		
25-3788	24441	Equip Operator Journey I	PT	A	LL	Anchorage	2AA	54 B / C	6.0	24,130	0	0	18,075	42,205	37,985		
25-3802	25606	Environ Impact Analyst III	FT	A	GP	Anchorage	200	19 J	12.0	78,120	3,206	0	47,246	128,572	64,286		
25-3803	25605	Engineering Assistant II	FT	A	GP	Anchorage	200	19 E / F	12.0	70,745	2,904	0	44,532	118,181	88,636		
25-3811	26641	Equip Operator Jrny III/Lead	FT	A	LL	Bethel	2II	52 F / J	12.0	70,878	0	6,825	46,989	124,692	18,704		
25-3812	26642	Equip Operator Jrny III/Lead	FT	A	LL	Bethel	2II	52 K / L	12.0	76,646	0	6,825	49,112	132,583	19,887		
25-3813	26643	Equip Operator Jrny III/Lead	FT	A	LL	Bethel	2II	52 N / O	12.0	85,487	0	9,934	53,511	148,932	14,893		
25-3814	26644	Equip Operator Jrny III/Lead	FT	A	LL	Bethel	2II	52 J / K	12.0	74,263	0	9,549	49,237	133,049	19,957		
25-N09019	21545	Equip Operator Sub Journey I	NP	N	LL	Soldotna	2CC	58 A	6.0	19,371	0	0	2,435	21,806			
25-N09020	21546	Equip Operator Sub Journey I	NP	N	LL	Soldotna	2CC	58 A	6.0	19,371	0	4,890	3,050	27,311			
25-N09025	21541	Equip Operator Sub Journey I	NP	N	LL	Palmer	2BB	58 A	6.0	18,904	0	0	2,376	21,280			

Note: If a position is split, an asterisk (\*) will appear in the Split/Count column. If the split position is also counted in the component, two asterisks (\*\*) will appear in this column.  
 [No valid job title] appearing in the Job Class Title indicates that the PCN has an invalid class code or invalid range for the class code effective date of this scenario.

**Personal Services Expenditure Detail (1445)**

**Department of Transportation/Public Facilities**

**Scenario:** FY2020 Governor Amended (15636)  
**Component:** Central Region Highways and Aviation (564)  
**RDU:** Highways, Aviation and Facilities (408)

Status	PCN	Tracking ID	Job Class Title	Time Status	Retire Code	Barg Unit	Location	Salary Sched	Range / Steps	Comp Months	Split / Count	Annual Salaries	COLA	Premium Pay	Annual Benefits	Total Costs	UGF Amount
25-N09026		21542	Equip Operator Sub Journey I	NP	N	LL	Palmer	2BB	58 A	6.0		18,904	0	4,772	2,976	26,652	
25-N09027		21543	Equip Operator Sub Journey I	NP	N	LL	Palmer	2BB	58 A	6.0		18,904	0	4,772	2,976	26,652	
25-N09028		21544	Equip Operator Sub Journey I	NP	N	LL	Palmer	2BB	58 A	6.0		18,904	0	4,772	2,976	26,652	
25-N09034		21549	Equip Operator Sub Journey I	NP	N	LL	Soldotna	2CC	58 A	6.0		19,371	0	4,890	3,050	27,311	
25-N09035		21550	Equip Operator Sub Journey I	NP	N	LL	Soldotna	2CC	58 A	6.0		19,371	0	4,890	3,050	27,311	
25-N09036		21551	Equip Operator Sub Journey I	NP	N	LL	Soldotna	2CC	58 A	6.0		19,371	0	4,890	3,050	27,311	
25-N09037		21552	Equip Operator Sub Journey I	NP	N	LL	Soldotna	2CC	58 A	6.0		19,371	0	4,890	3,050	27,311	
25-N10056		25213	Equip Operator Sub Journey I	NP	N	LL	Anchorage	2AA	58 A	6.0		18,446	0	0	2,319	20,765	
25-N10057		25214	Equip Operator Sub Journey I	NP	N	LL	Anchorage	2AA	58 A	6.0		18,446	0	4,656	2,904	26,006	
25-N10058		25215	Equip Operator Sub Journey I	NP	N	LL	Anchorage	2AA	58 A	6.0		18,446	0	0	2,319	20,765	
25-N10059		25216	Equip Operator Sub Journey I	NP	N	LL	Anchorage	2AA	58 A	6.0		18,446	0	4,656	2,904	26,006	

	Total Positions	New	Deleted
<b>Full Time Positions:</b>	167	0	0
<b>Part Time Positions:</b>	4	0	0
<b>Non Permanent Positions:</b>	14	0	0
<b>Positions in Component:</b>	185	0	0
<b>Total Component Months:</b>	2112.0		

<b>Total Salary Costs:</b>	11,735,474
<b>Total COLA:</b>	49,424
<b>Total Premium Pay:</b>	1,296,865
<b>Total Benefits:</b>	7,833,918
<b>Total Pre-Vacancy:</b>	20,915,681
<b>Minus Vacancy Adjustment of 5.84%:</b>	(1,221,781)
<b>Total Post-Vacancy:</b>	19,693,900
<b>Plus Lump Sum Premium Pay:</b>	0
<b>Personal Services Line 100:</b>	19,693,900

PCN Funding Sources:	Pre-Vacancy	Post-Vacancy	Percent
1004 General Fund Receipts	13,772,875	12,968,338	65.85%
1005 General Fund/Program Receipts	328,871	309,660	1.57%
1007 Interagency Receipts	134,162	126,325	0.64%
1039 U/A Indirect Cost Recovery	416,523	392,192	1.99%

Note: If a position is split, an asterisk (\*) will appear in the Split/Count column. If the split position is also counted in the component, two asterisks (\*\*) will appear in this column. [No valid job title] appearing in the Job Class Title indicates that the PCN has an invalid class code or invalid range for the class code effective date of this scenario.

**Personal Services Expenditure Detail (1445)**

**Department of Transportation/Public Facilities**

**Scenario:** FY2020 Governor Amended (15636)

**Component:** Central Region Highways and Aviation (564)

**RDU:** Highways, Aviation and Facilities (408)

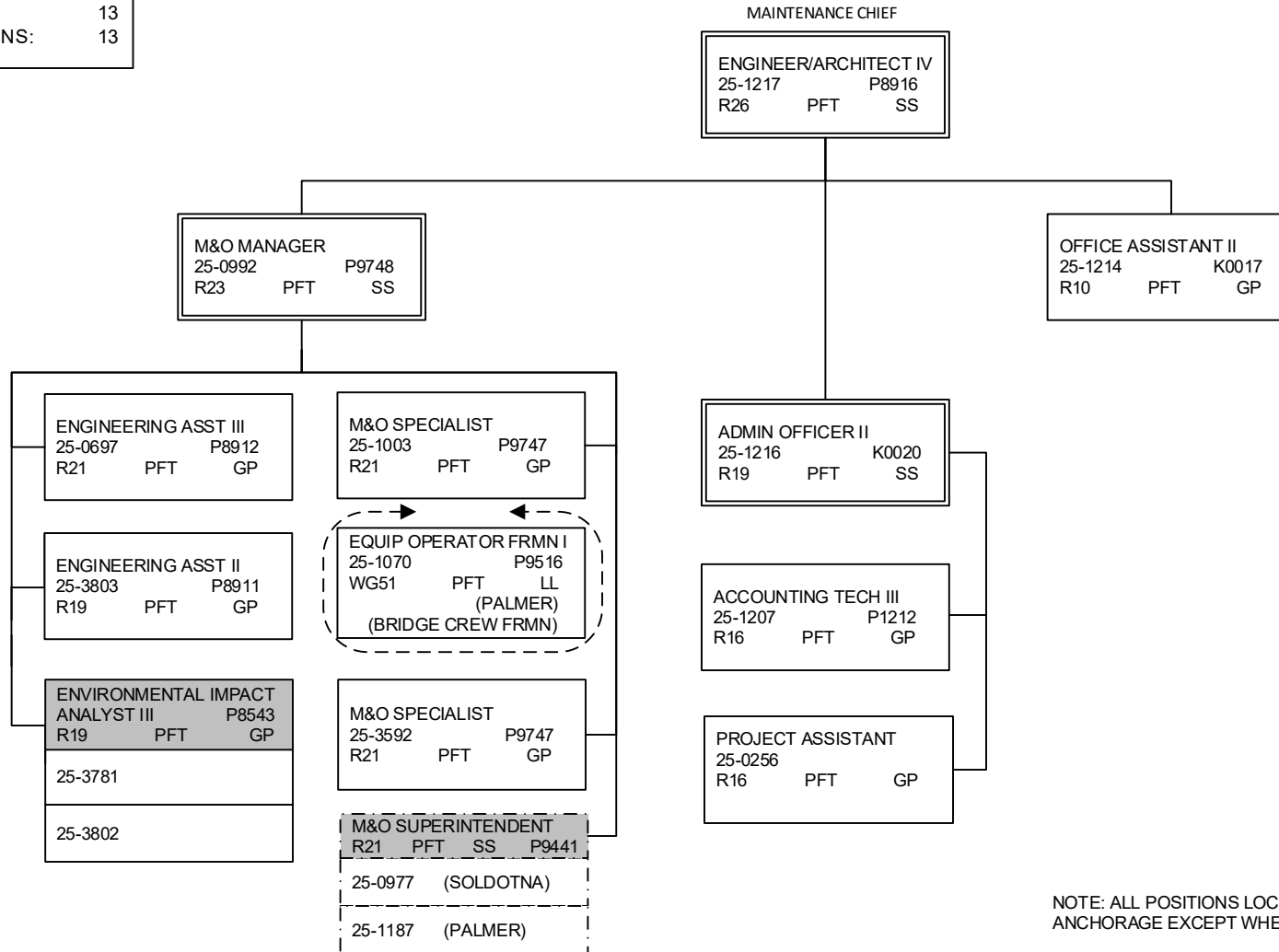
<b>PCN Funding Sources:</b>	<b>Pre-Vacancy</b>	<b>Post-Vacancy</b>	<b>Percent</b>
1061 Capital Improvement Project Receipts	3,895,788	3,668,217	18.63%
1108 Statutory Designated Program Receipts	117,697	110,822	0.56%
1239 Aviation Fuel Tax Revenue	1,566,493	1,474,987	7.49%
1244 Rural Airport Receipts	492,813	464,025	2.36%
1249 Motor Fuel Tax Receipts	190,460	179,334	0.91%
<b>Total PCN Funding:</b>	<b>20,915,681</b>	<b>19,693,900</b>	<b>100.00%</b>

Note: If a position is split, an asterisk (\*) will appear in the Split/Count column. If the split position is also counted in the component, two asterisks (\*\*) will appear in this column. [No valid job title] appearing in the Job Class Title indicates that the PCN has an invalid class code or invalid range for the class code effective date of this scenario.

**DEPARTMENT OF TRANSPORTATION & PUBLIC FACILITIES  
RDU: HIGHWAYS, AVIATION AND FACILITIES  
COMPONENT: CENTRAL REGION HIGHWAYS & AVIATION (564)  
FY2020 GOVERNOR AMENDED BUDGET**

COMPONENT TOTAL:	185
FULLTIME POSITIONS:	167
PARTTIME POSITIONS:	4
NONPERM POSITIONS:	14
PAGE TOTAL:	13
FULLTIME POSITIONS:	13

**MAINTENANCE &  
OPERATIONS  
ADMINISTRATION  
Anchorage**



NOTE: ALL POSITIONS LOCATED IN ANCHORAGE EXCEPT WHERE NOTED.

**DEPARTMENT OF TRANSPORTATION & PUBLIC FACILITIES**  
**RDU: HIGHWAYS, AVIATION AND FACILITIES**  
**COMPONENT: CENTRAL REGION HIGHWAYS & AVIATION (564)**  
**FY2020 GOVERNOR AMENDED BUDGET**

**ANCHORAGE DISTRICT**

TOTAL POSITIONS THIS DISTRICT 58  
 FULL TIME POSITIONS 50  
 PART TIME POSITIONS 4  
 NON PERM POSITIONS 4

ENGINEER/ARCHITECT IV  
 25-1217 P8916  
 R26 PFT SS

M&O SUPERINTENDENT  
 25-0981 P9441  
 R21 PFT SS

**SAFETY & EMERGENCY**  
 25-1182 S&E SUPPORT SPEC  
 P7852 R17 PFT GP

ADMIN ASSISTANT II  
 25-1036 K0018  
 R14 PFT GP

OFFICE ASSISTANT II  
 25-0980 K0017  
 R10 PFT GP

EQ OP FOREMAN II  
 25-1090 P9517  
 WG50 PFT LL

EQ OP JRNY III/LD  
 25-1133 P9511  
 WG52 PFT LL

EQ OP JRNY III/LD  
 25-1088 P9511  
 WG52 PFT LL

EQ OP JRNY III/LD  
 25-3434 P9511  
 WG52 PFT LL

EQ OP JRNY III/LD  
 25-1068 P9511  
 WG52 PFT LL

**SILVERTIP 1 AIRPORT**  
 EQ OP JRNY III/LD  
 25-1041 P9511  
 WG52 PFT LL

**GIRDWOOD 2 APTS**  
 EQ OP JRNY III/LD  
 25-1096 P9511  
 WG52 PFT LL

EQ OP JRNY II P9511  
 WG53 PFT LL

25-1071

25-1083

25-1123

25-1134

25-1162

EQ OP JRNY I P9511  
 WG54 PFT LL

25-1079

EQ OP JRNY II P9511  
 WG53 PFT LL

25-0982

25-1072

25-1073

25-1089

25-1142

EQ OP JRNY I P9511  
 WG54 PFT LL

25-1135

EQ OP JRNY II P9511  
 WG53 PFT LL

25-1030

25-1136

25-1146

EQ OP JRNY I P9511  
 WG54 PFT LL

25-1075

25-1084

25-1086

25-1161

EQ OP JRNY II P9511  
 WG53 PFT LL

25-0997

25-1077

25-1137

25-1138

EQ OP JRNY I P9511  
 WG54 PFT LL

25-1009

25-1078

25-1081

EQ OP JRNY II P9511  
 WG53 PFT LL

25-1025

25-1042

25-1045

25-1080

EQ OP JRNY II P9511  
 WG53 PFT LL

25-1044

25-1097

25-1098

25-3432

25-3433

EQ OP JRNY I / II FLEX  
 WG54/53 P9511  
 PFT LL

25-1099

MAINT SPEC  
 ELECTRICIAN JRNY II  
 WG51 PFT LL P9325

25-1007

25-1008

EQ OP JRNY II P9511  
 WG53 PFT LL

25-1082

EQ OP SUB JRNY I P9511  
 WG58 NP LL

25-N10056

25-N10057

25-N10058

25-N10059

EQ OP JRNY I P9511  
 WG54 PPT LL

25-3782	25-3785
25-3783	25-3788

NOTE: ALL POSITIONS LOCATED IN ANCHORAGE EXCEPT WHERE NOTED.

**DEPARTMENT OF TRANSPORTATION & PUBLIC FACILITIES**  
**RDU: HIGHWAYS, AVIATION AND FACILITIES**  
**COMPONENT: CENTRAL REGION HIGHWAYS & AVIATION (564)**  
**FY2020 GOVERNOR AMENDED BUDGET**

**MATSU DISTRICT**

TOTAL POSITIONS THIS DISTRICT 41  
 FULL TIME POSITIONS 37  
 NON PERM POSITIONS 4

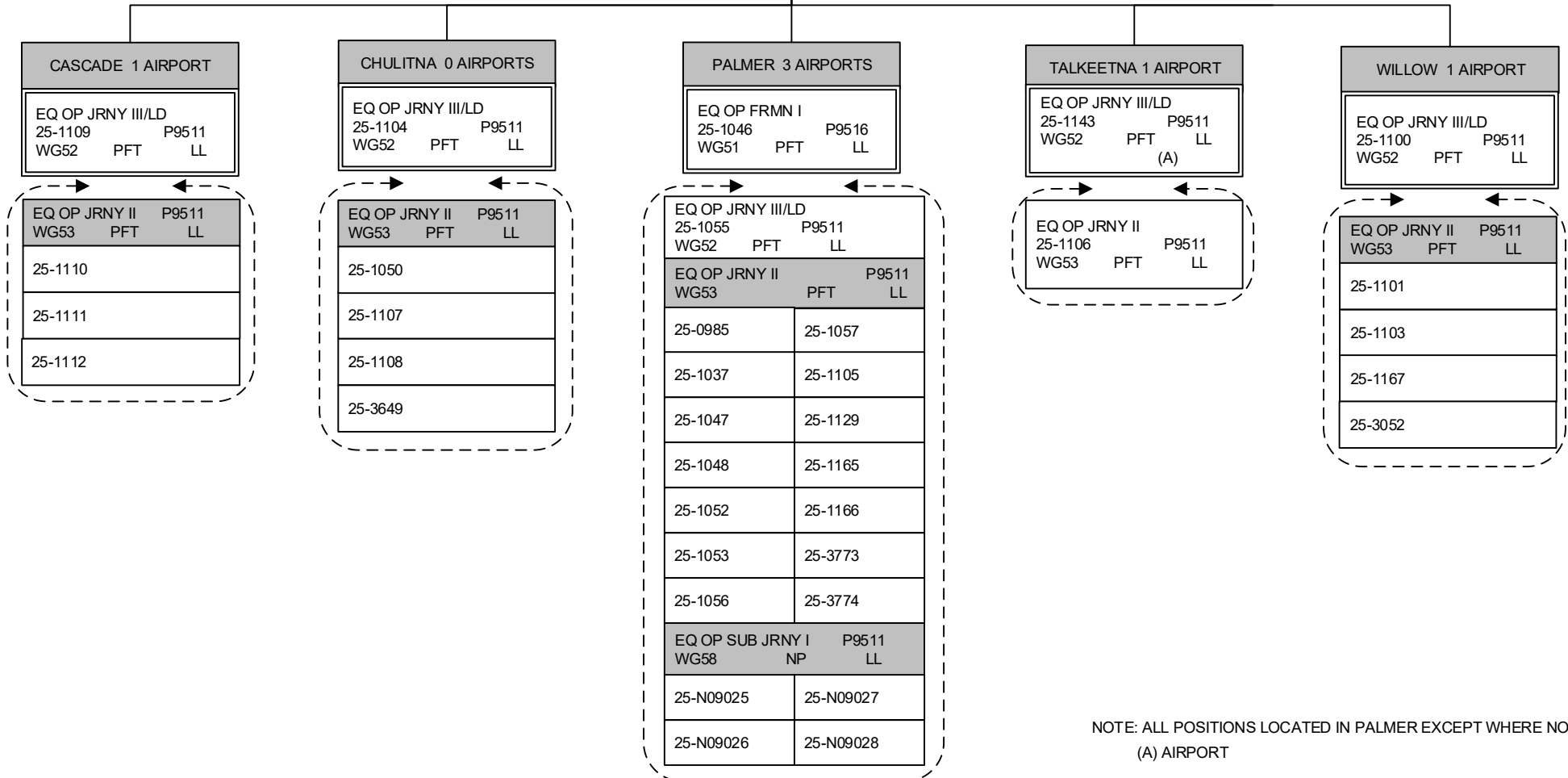
M&O MANAGER  
 25-0992 P9748  
 R23 PFT SS

M&O SUPERINTENDENT  
 25-1187 P9441  
 R21 PFT SS

MAINT SPEC ELEC JRNY II  
 P9325 WG51 PFT LL  
 (DISTRICTWIDE)  
 25-0549  
 25-1102

ACCT TECH II  
 25-0979 P1211  
 R14 PFT GP

OFFICE ASSISTANT II  
 25-0935 K0017  
 R10 PFT GP



NOTE: ALL POSITIONS LOCATED IN PALMER EXCEPT WHERE NOTED.  
 (A) AIRPORT

**DEPARTMENT OF TRANSPORTATION & PUBLIC FACILITIES**  
**RDU: HIGHWAYS, AVIATION AND FACILITIES**  
**COMPONENT: CENTRAL REGION HIGHWAYS & AVIATION (564)**  
**FY2020 GOVERNOR AMENDED BUDGET**

**PENINSULA DISTRICT**

TOTAL POSITIONS THIS DISTRICT 49  
 FULL TIME POSITIONS 43  
 NON PERM POSITIONS 6

M&O MANAGER  
 25-0992 P9748  
 R23 PFT SS

M&O SUPERINTENDENT  
 25-0977 P9441  
 R21 PFT SS

MTN SPEC ELECT JRNY II  
 P9325 WG51 PFT LL  
 (DISTRICTWIDE)  
 25-0565  
 25-1021

ACCT TECH II  
 25-1010 P1211  
 R14 PFT GG

OFFICE ASSISTANT II  
 25-0983 K0017  
 R10 PFT GP

HOMER 1 AIRPORT  
 EQ OP FRMN II  
 25-1141 P9517  
 WG50 PFT LL

NINILCHIK 1 AIRPORT  
 EQ OP JRNY III/LD  
 25-1127 P9511  
 WG52 PFT LL

SOLDOTNA 1 AIRPORT  
 EQ OPER FRMN I  
 25-1012 P9516  
 WG51 PFT LL

NORTH KENAI  
 EQ OP JRNY III/LD  
 25-1115 P9511  
 WG52 PFT LL

CROWN POINT (SEWARD)  
 3 AIRPORTS  
 EQ OP JRNY III/LD  
 25-1118 P9511  
 WG52 PFT LL

OFFICE ASSIST II  
 25-0569 P1135  
 R10 PFT GP  
 EQ OP JRNY III/LD P9511  
 WG52 PFT LL  
 25-1017 (A)  
 25-1060 (A)  
 25-1066 (A)

EQ OP JRNY II P9511  
 WG53 PFT LL  
 25-1019  
 25-1130  
 25-1177

EQ OP JRNY III/LD P9511 25-1026 WG52 PFT LL	
EQ OP JRNY II P9511 WG53 PFT LL	EQ OP SUB JRNY I P9511 WG58 NP LL
25-0998	25-N09019
25-1020	25-N09020
25-1022	25-N09034
25-1064	25-N09035
25-1076	25-N09036
25-1120	25-N09037
25-1126	
25-3429	
25-3430	

EQ OP JRNY II P9511  
 WG53 PFT LL  
 25-1018  
 25-1153

EQ OP JRNY II P9511  
 WG53 PFT LL  
 25-1091  
 25-1119  
 25-1121

SELDOVIA 3 AIRPORTS  
 EQ OP JRNY III/LD  
 25-1094 P9511  
 WG52 PFT LL

HOMER HIGHWAYS  
 EQ OP JRNY III/LD  
 25-1058 P9511  
 WG52 PFT LL

QUARTZ CREEK 1 APT  
 EQUIP OP JRNY III/LD  
 25-1122 P9511  
 WG52 PFT LL

EQ OP JRNY II P9511  
 WG53 PFT LL  
 25-1061 25-1067  
 25-1062 25-1128  
 25-1065

EQ OP JRNY II P9511  
 WG53 PFT LL  
 \*25-1013  
 25-1124  
 25-3431

SEASONAL CREW  
 \* Bridge Crew  
 (A) AIRPORT

NOTE: ALL POSITIONS LOCATED IN SOLDOTNA EXCEPT WHERE NOTED.



**DEPARTMENT OF TRANSPORTATION & PUBLIC FACILITIES**  
**RDU: HIGHWAYS, AVIATION AND FACILITIES**  
**COMPONENT: CENTRAL REGION HIGHWAYS & AVIATION (564)**  
**FY2020 GOVERNOR AMENDED BUDGET**

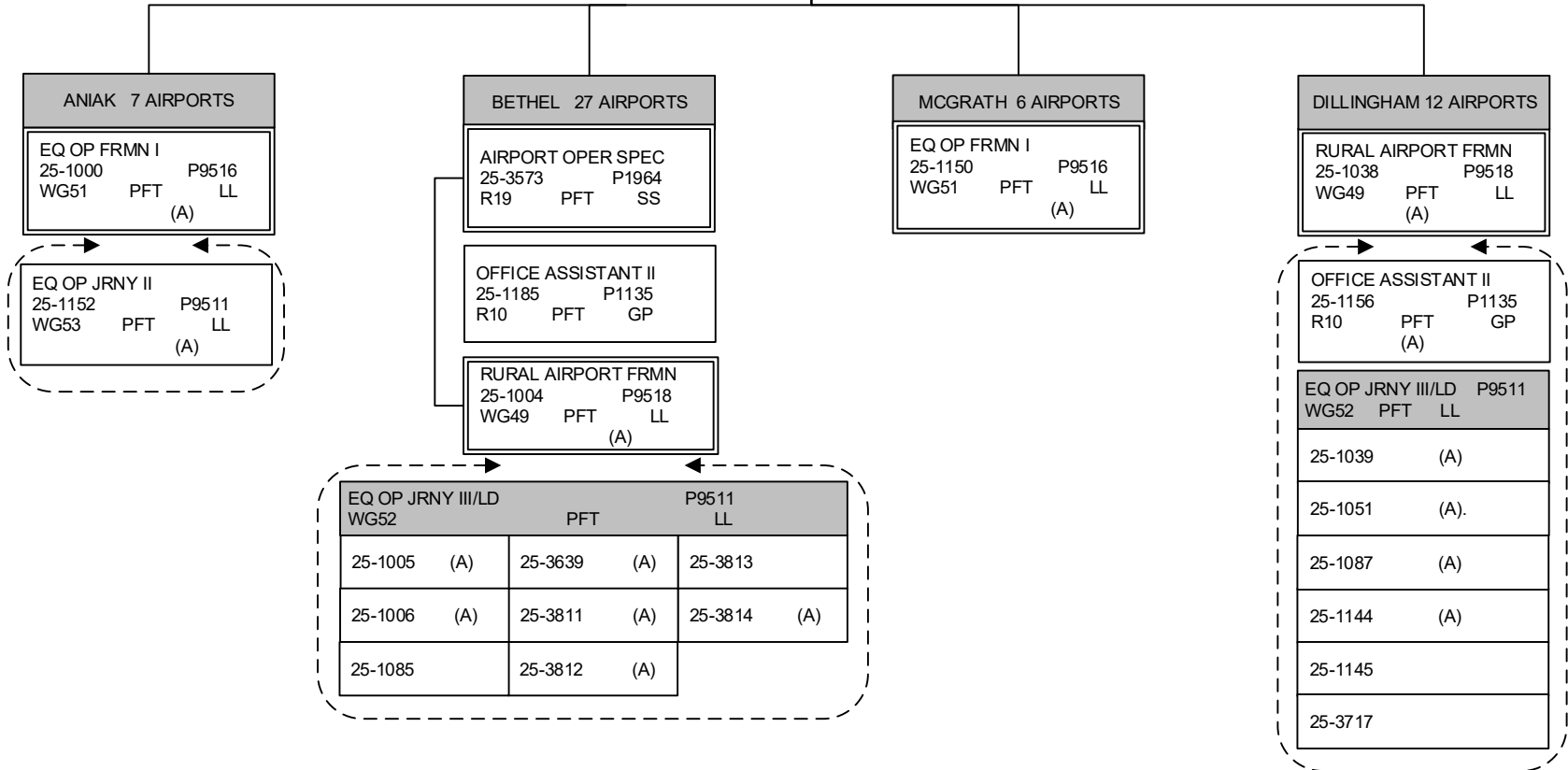
**SOUTHWEST DISTRICT**

TOTAL POSITIONS THIS DISTRICT 24  
 FULL TIME POSITIONS 24

ENGINEER/ARCHITECT IV  
 25-1217 P8916  
 R26 PFT SS

M&O SUPERINTENDENT  
 25-0974 P9441  
 R21 PFT SS

ADMIN ASSISTANT II  
 25-1169 K0018  
 R14 PFT GP



NOTE: POSITIONS LOCATED IN ANCHORAGE  
 EXCEPT WHERE NOTED.

(A) AIRPORT