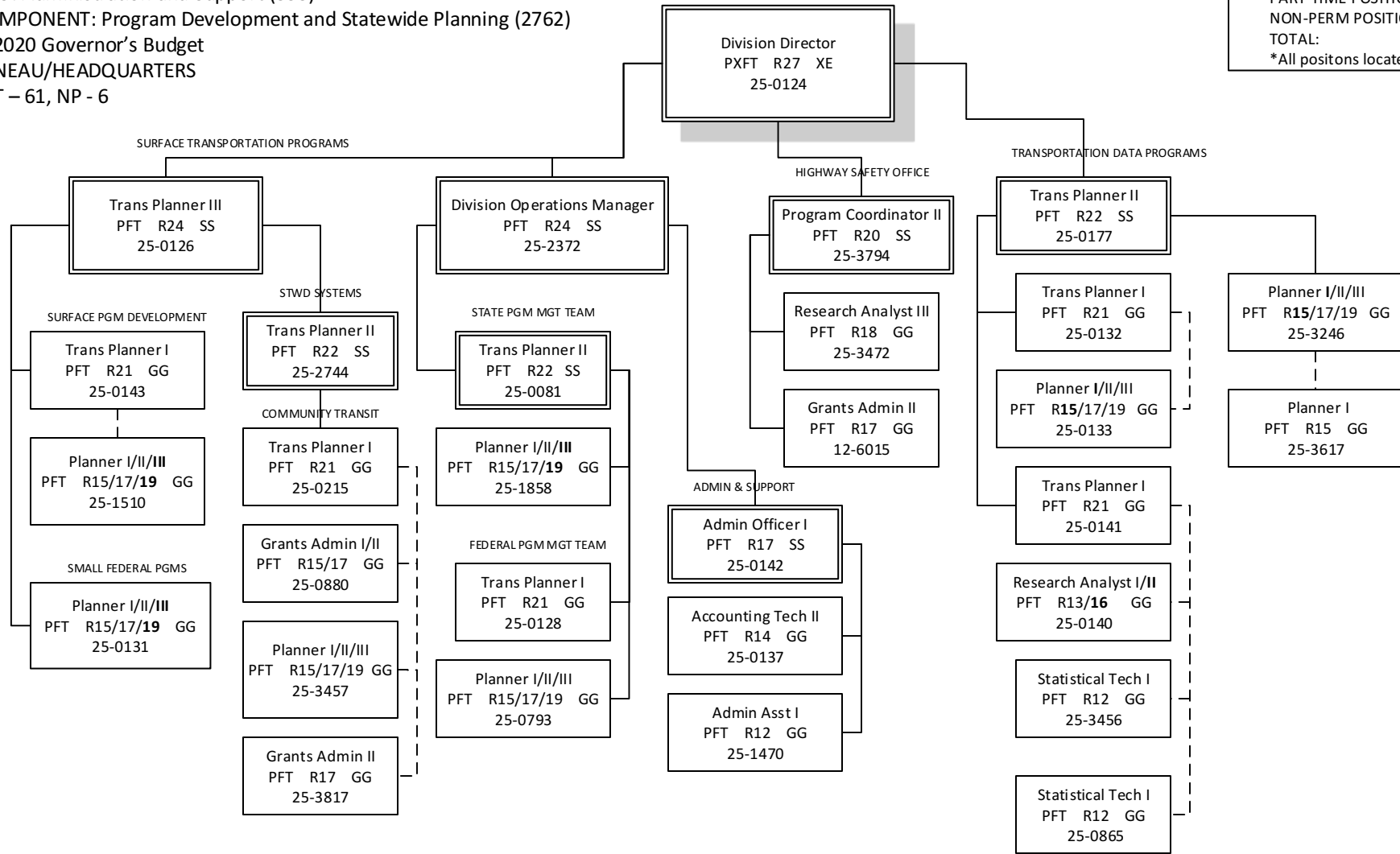


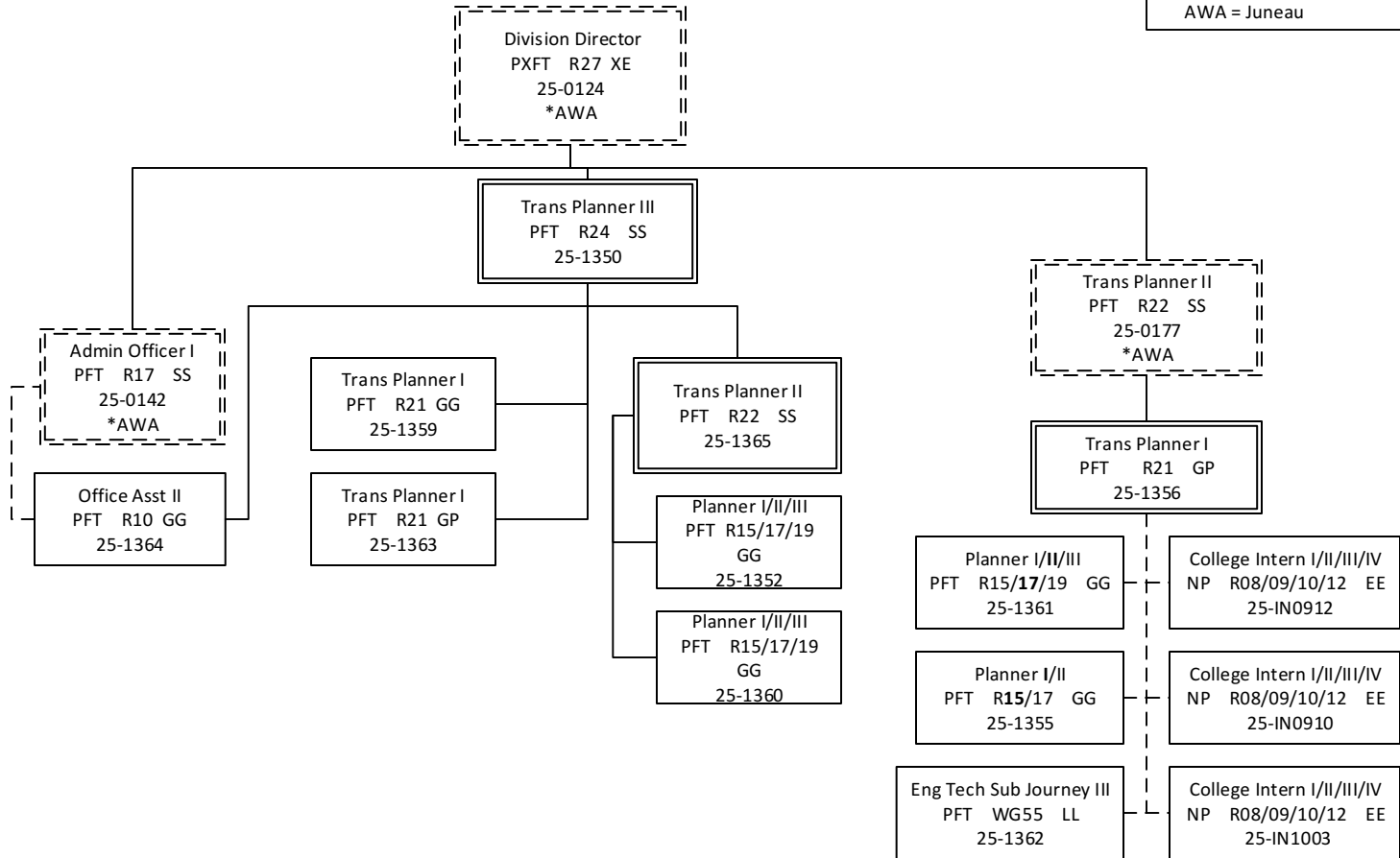
Department of Transportation & Public Facilities
 RDU: Administration and Support (333)
 COMPONENT: Program Development and Statewide Planning (2762)
 FY2020 Governor's Budget
 JUNEAU/HEADQUARTERS
 PFT – 61, NP - 6

HEADQUARTERS TOTAL:
 FULL-TIME POSITIONS: 30
 PART-TIME POSITIONS: 0
 NON-PERM POSITIONS: 0
 TOTAL: 30
 *All positons located in Juneau



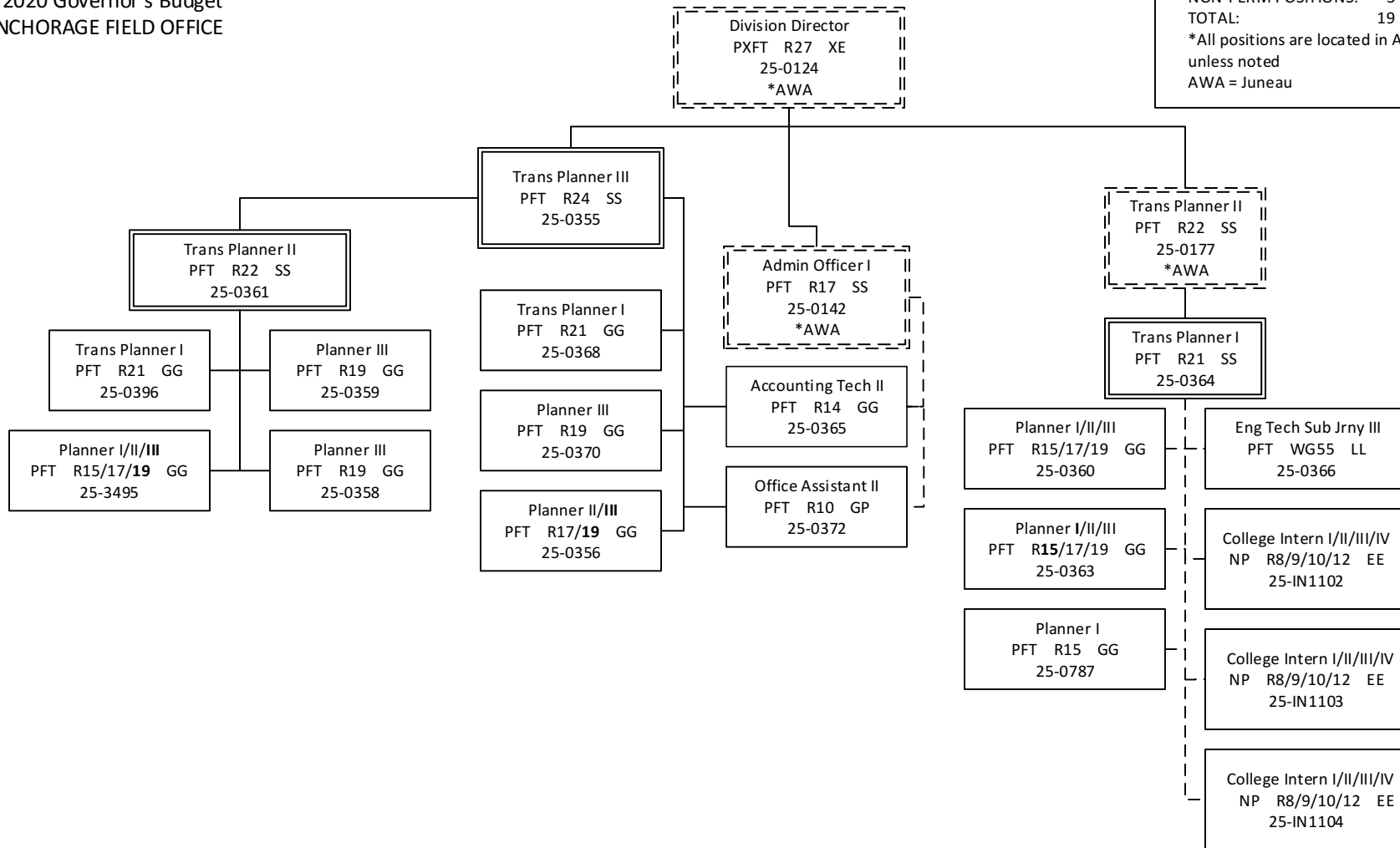
Department of Transportation & Public Facilities
 RDU: Administration and Support
 COMPONENT: Program Development and Statewide Planning (2762)
 FY2020 Governor's Budget
 FAIRBANKS FIELD OFFICE

FAIRBANKS FIELD OFFICE TOTAL:
 FULL-TIME POSITIONS: 11
 PART-TIME POSITIONS: 0
 NON-PERM POSITIONS: 3
 TOTAL: 14
 *All positions are located in Fairbanks,
 unless noted.
 AWA = Juneau



Department of Transportation & Public Facilities
 RDU: Administration and Support
 COMPONENT: Program Development and Statewide Planning (2762)
 FY2020 Governor's Budget
 ANCHORAGE FIELD OFFICE

ANCHORAGE FIELD OFFICE TOTAL:
 FULL-TIME POSITIONS: 16
 PART-TIME POSITIONS: 0
 NON-PERM POSITIONS: 3
 TOTAL: 19
 *All positions are located in Anchorage,
 unless noted
 AWA = Juneau



Department of Transportation & Public Facilities
RDU: Administration and Support
COMPONENT: Program Development and Statewide Planning (2762)
FY2020 Governor's Budget
JUNEAU FIELD OFFICE

JUNEAU FIELD OFFICE TOTAL:
FULL-TIME POSITIONS: 4
PART-TIME POSITIONS: 0
NON-PERM POSITIONS: 0
TOTAL: 4
*All positions are located in Juneau

