

DEPARTMENT OF TRANSPORTATION & PUBLIC FACILITIES  
 DESIGN, ENGINEERING & CONSTRUCTION  
 NORTHERN DESIGN & ENGINEERING SERVICES (2299)  
 FY2020 GOVERNORS BUDGET

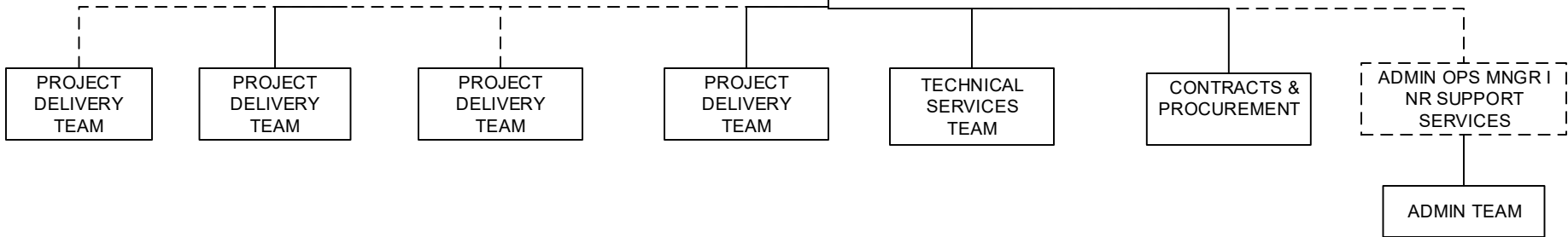
NORTHERN REGION DESIGN & ENGINEERING SERVICES	
POSITIONS	TOTAL
FULL-TIME	110
SEASONAL	13
NON PERM	2
TOTAL	125

Fairbanks (JBA)

NORTHERN REGIONAL DIRECTOR  
 DIVISION DIRECTOR  
 25-1239 (XE) 27

PRE-CONSTRUCTION ENGINEER  
 Eng/Arch V  
 25-1369 (SS) 27

Traffic & Safety Eng  
 Tech Eng I/Arch I  
 25-2418 (GP) 24



Positions	Total
Full-Time	2
Seasonal	0
<b>Total</b>	<b>2</b>

Positions located in Fairbanks (JBA) unless otherwise noted.  
 Dotted line positions are not budgeted in this component.

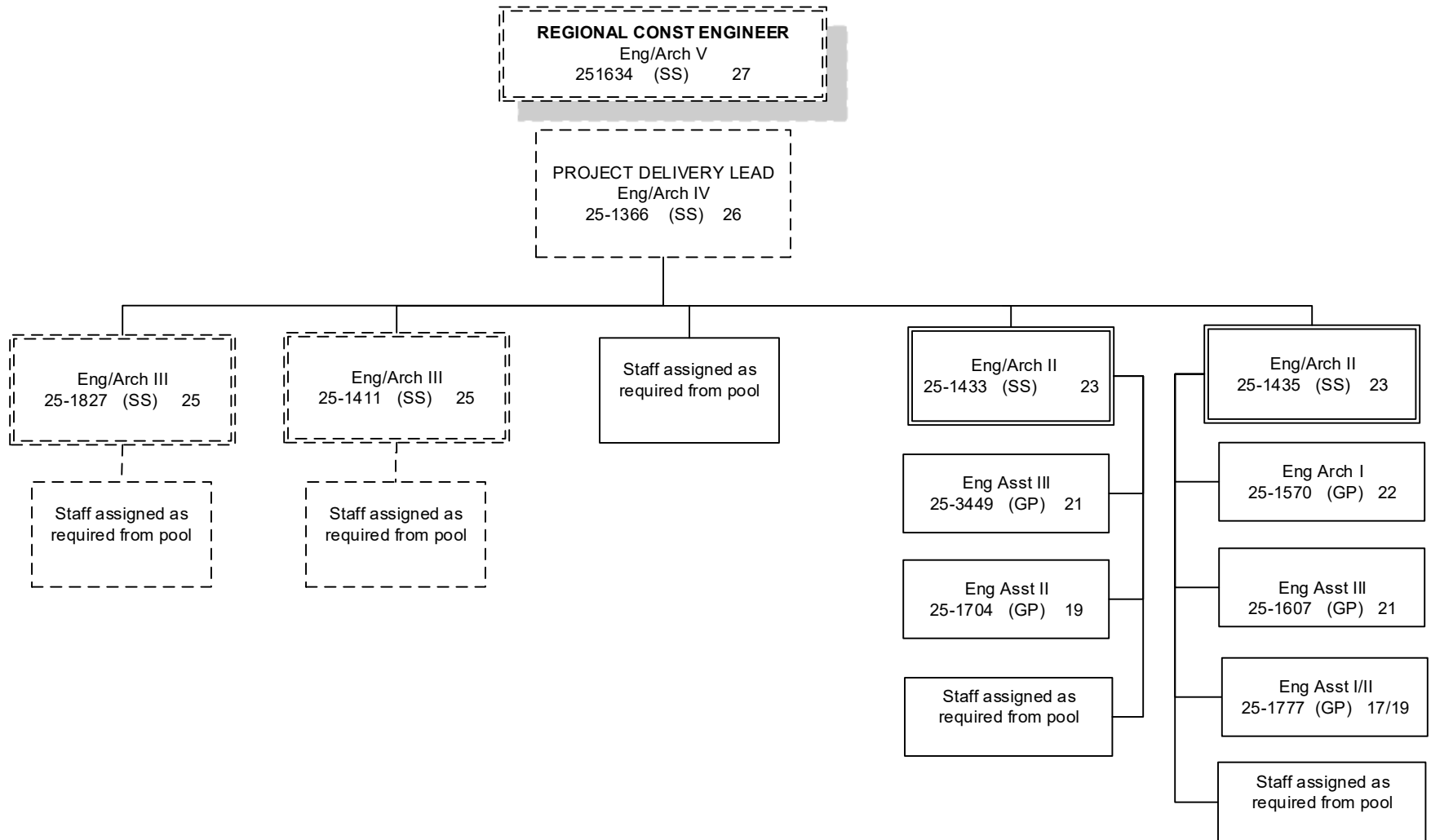
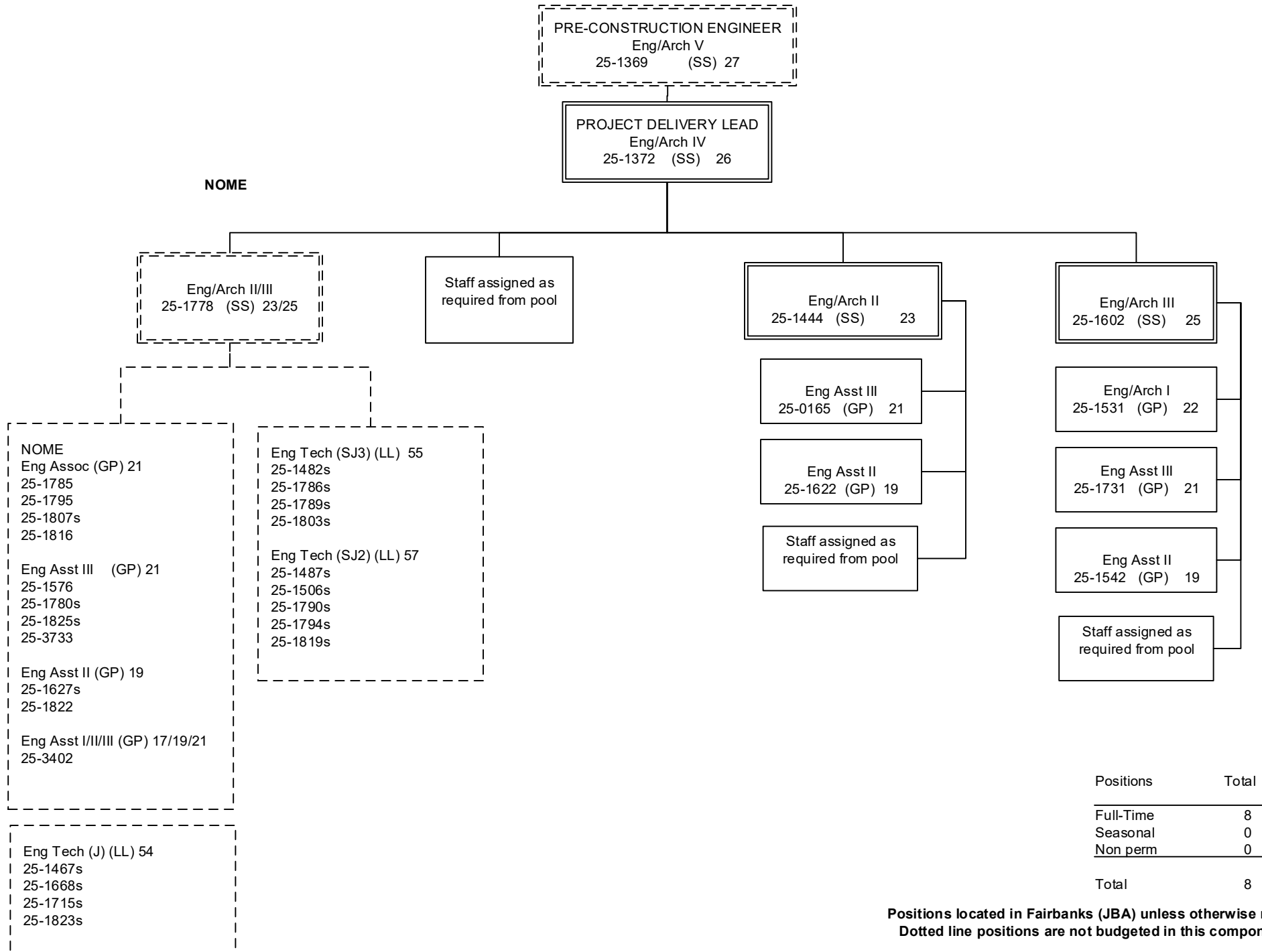


CHART 3

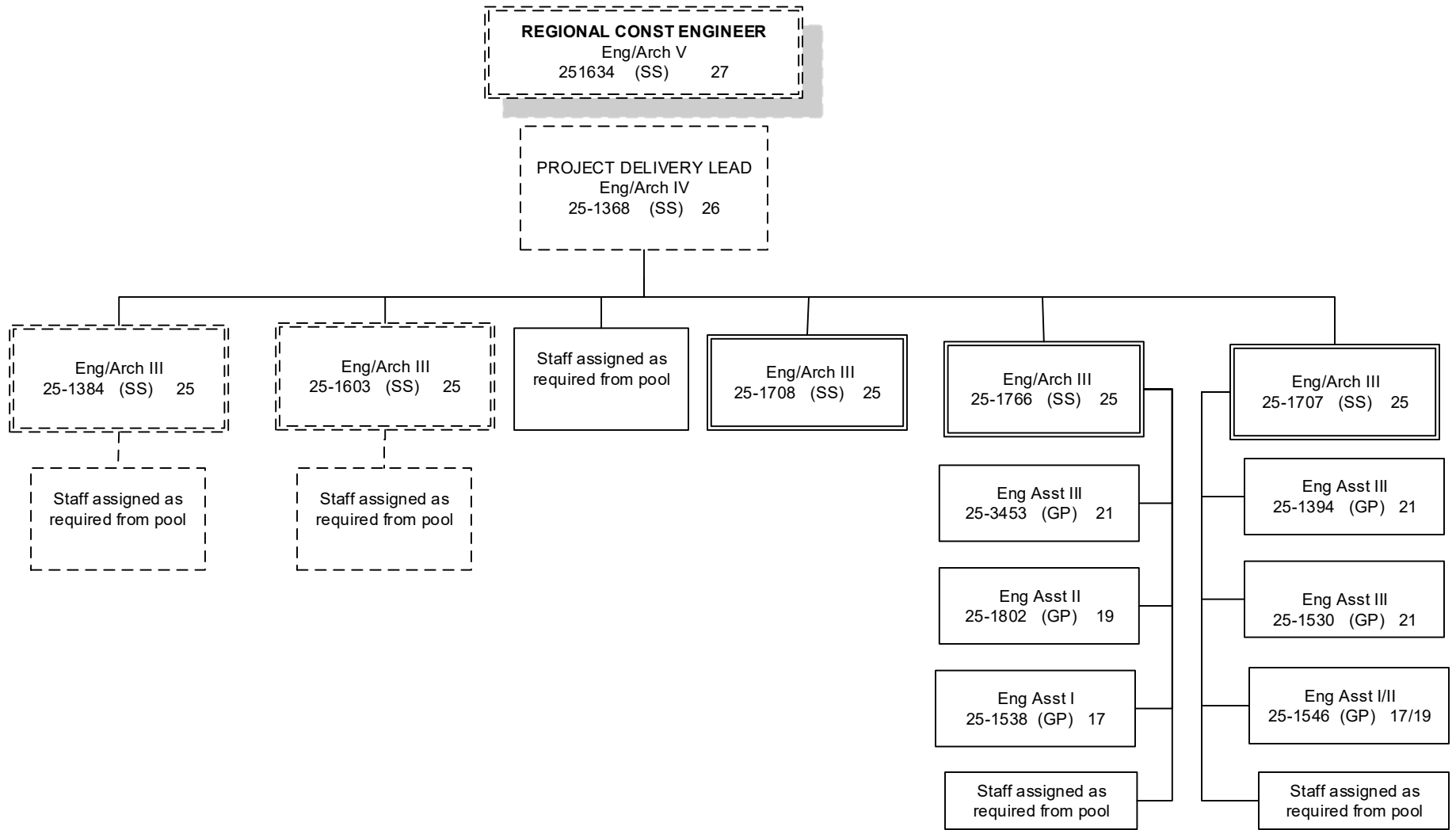
Positions	Total
Full-Time	7
Seasonal	0
<b>Total</b>	<b>7</b>

Positions located in Fairbanks (JBA) unless otherwise noted.  
 Dotted line positions are not budgeted in this component.



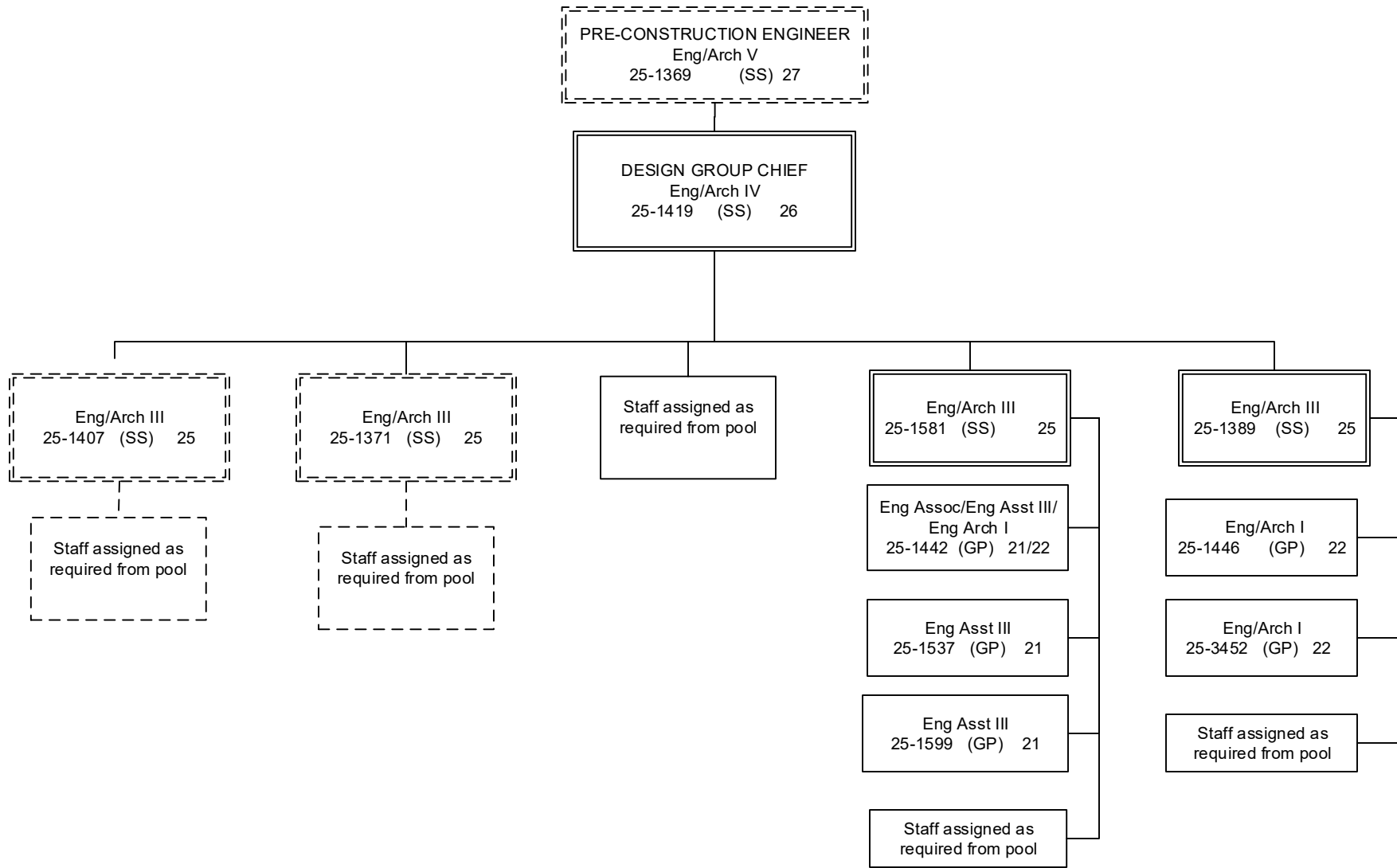
Positions	Total
Full-Time	8
Seasonal	0
Non perm	0
<b>Total</b>	<b>8</b>

Positions located in Fairbanks (JBA) unless otherwise noted.  
 Dotted line positions are not budgeted in this component.



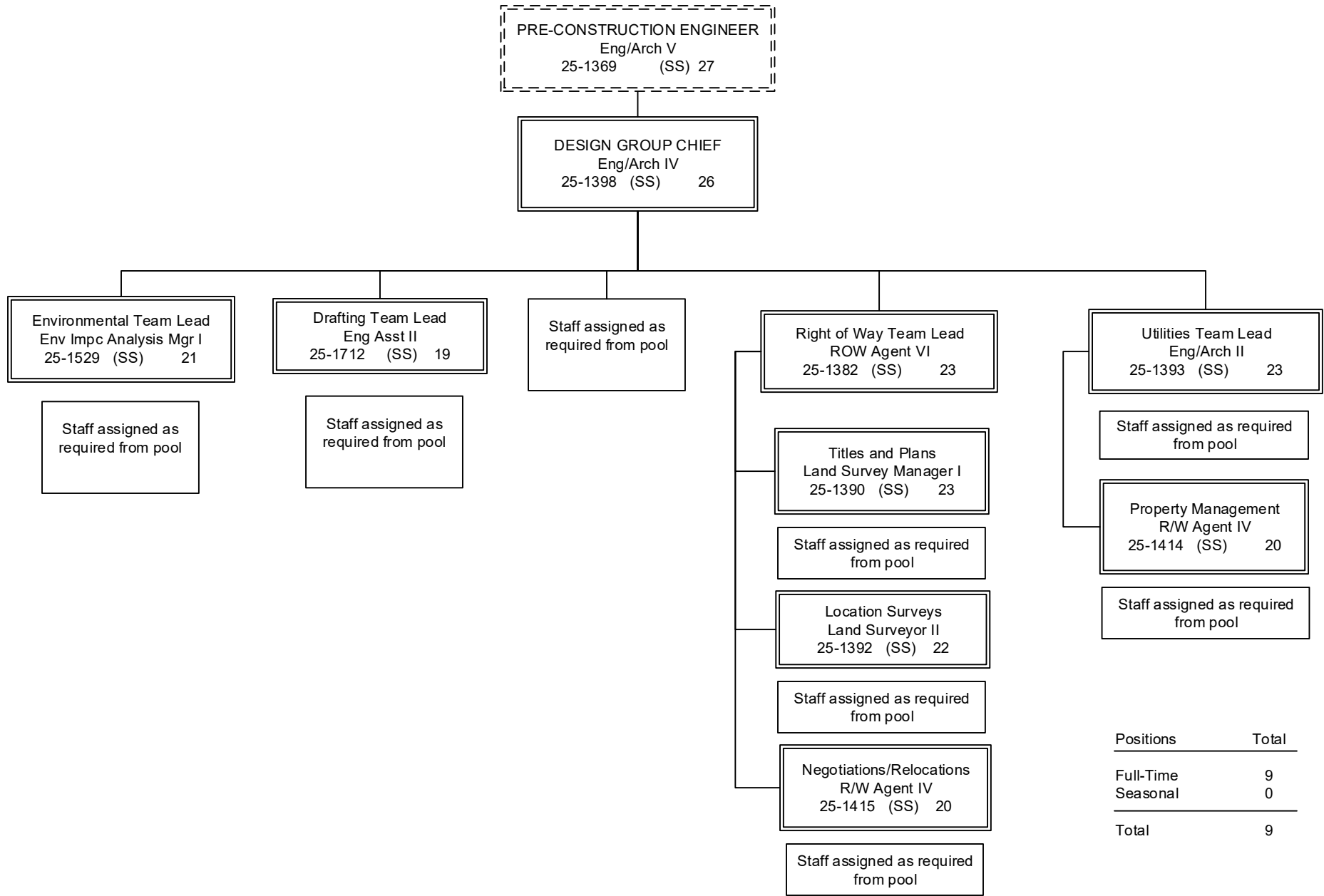
Positions	Total
Full-Time	9
Seasonal	0
<b>Total</b>	<b>9</b>

**Positions located in Fairbanks (JBA) unless otherwise noted.  
 Dotted line positions are not budgeted in this component.**



Positions	Total
Full-Time	8
Seasonal	0
<b>Total</b>	<b>8</b>

**Positions located in Fairbanks (JBA) unless otherwise noted.  
 Dotted line positions are not budgeted in this component.**



Positions located in Fairbanks (JBA) unless otherwise noted.  
 Dotted line positions are not budgeted in this component.

ROW & UTILITIES STAFF ASSIGNED AS REQUIRED

Eng Arch I (GP) 22  
 25-1396

Land Surveyor I (GP) 21  
 25-1740

Eng Asst III (GP) 21  
 25-1406  
 25-1409  
 25-1421  
 25-1611  
 25-3450

Eng Asst I/II/III (GP) 17/19/21  
 25-1626

Eng Asst I/II (GP) 17/19  
 25-1683  
 25-1835

ROW Agent III (GP) 18  
 25-1388  
 25-1391  
 25-1399  
 25-1416  
 25-1460  
 25-1544  
 25-1572  
 25-1729

ROW Agent II (GP) 16  
 25-1400  
 25-1423  
 25-3694

Survey – Lead (LL) 53  
 25-1612s  
 25-1871s

ROW Asst (GP) 12  
 25-1425

Survey – J (LL) 54  
 25-1500s  
 25-1565s

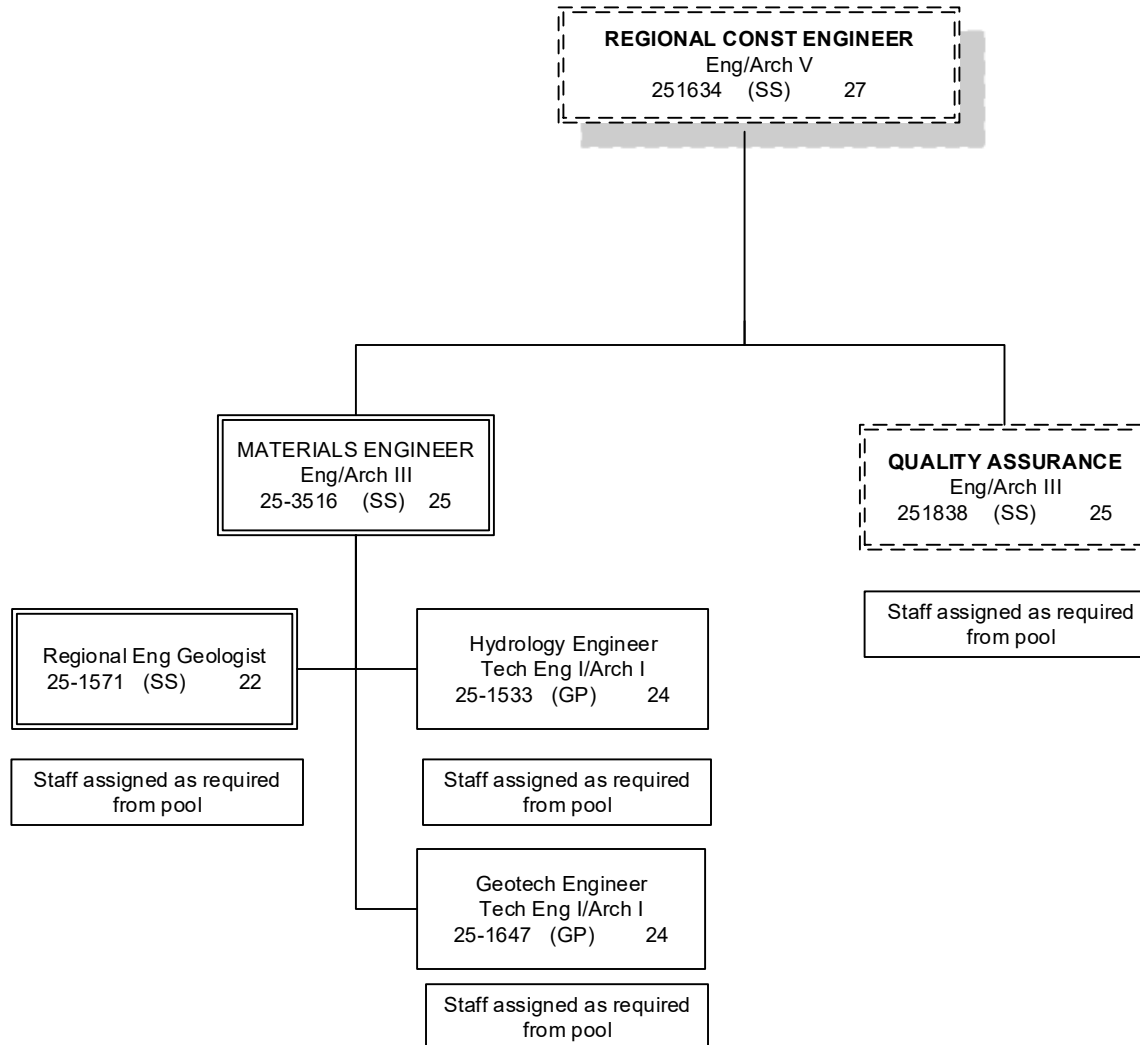
Survey – SJ II (LL) 56  
 25-1682s  
 25-1694s

Positions	Total
Full-Time	22
Seasonal	6
<b>Total</b>	<b>28</b>

SJ – Sub Journey  
 J = Journey

Positions located in Fairbanks (JBA) unless otherwise noted.  
 Dotted line positions are not budgeted in this component.

(s) = Seasonal Position



Positions	Total
Full-Time	4
Seasonal	0
Non Perm	0
<b>Total</b>	<b>4</b>

Positions located in Fairbanks (JBA) unless otherwise noted.  
 Dotted line positions are not budgeted in this component.

(s) = Seasonal Position



MATERIALS & QUALITY ASSURANCE STAFF ASSIGNED AS REQUIRED

Eng/Arch I (GP) 22  
 25-1551  
 25-3574

Eng Asst III (GP) 21  
 25-1439  
 25-1441

Eng Geologist II (GP) 18  
 25-1624  
 25-1635  
 25-1636

Driller Journey (LL) 53  
 25-1645  
 25-1775s

Driller SJ (LL) 54  
 25-1491s  
 25-1644s

Mat Lab Tech SJ I/II/III/IV, J (LL)  
 59/57/56/54/53  
 25-1643s  
 25-1648s  
 25-1776s

SJ – Sub Journey  
 J = Journey

Positions	Total
Full-Time	8
Seasonal	6
Non Perm	0
<b>Total</b>	<b>14</b>

**Positions located in Fairbanks (JBA) unless otherwise noted.  
 Dotted line positions are not budgeted in this component.**

(s) = Seasonal Position

DESIGN ENGINEERING STAFF ASSIGNED AS REQUIRED

Eng Arch I (GP) 22  
 25-1432  
 25-1437  
 25-3607  
  
 Eng Asst III/Eng Associate/  
 Eng- Arch I (GP) 21/22  
  
 25-1540

Eng Asst III (GP) 21  
  
 25-3605  
 25-3608

Env Impact Analyst III (GP) 19  
  
 25-1536  
 25-1545  
 25-1556  
 25-1771  
 25-2410  
 25-3593

Env Impact Analyst II (GP) 17  
  
 25-1532  
 25-1604  
 25-1850

Env Impact Analyst I/II/III (GP) 15/17/19  
  
 25-1426

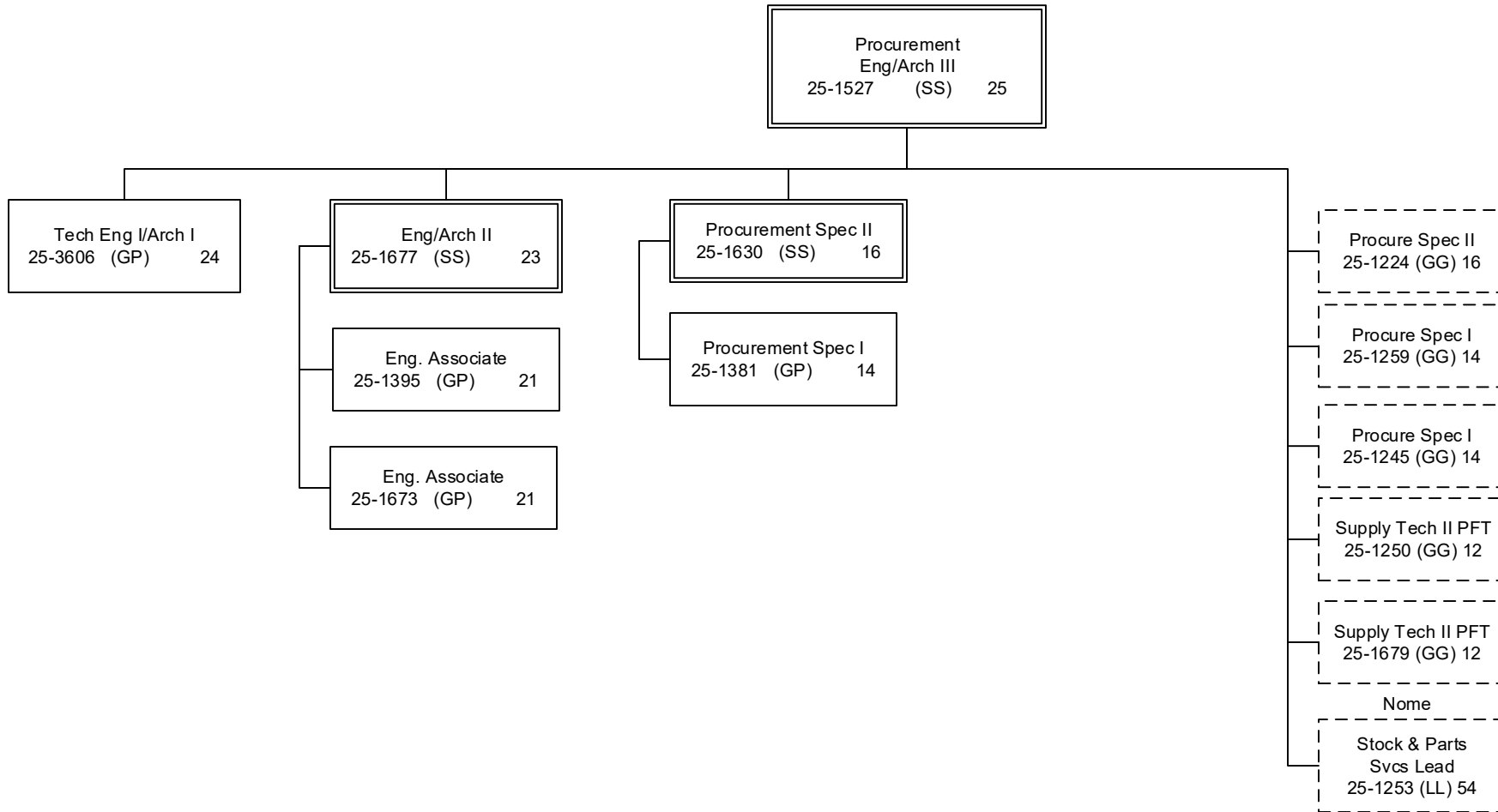
Drafting Tech III (GP) 15  
  
 25-1559  
 25-1558  
 25-1770  
 25-1832

College Intern I/II/III/IV (EE)8/9/10/12  
  
 25-IN1202  
 25-IN1204

Positions	Total
Full-Time	20
Seasonal	0
Non Perm	2
<b>Total</b>	<b>22</b>

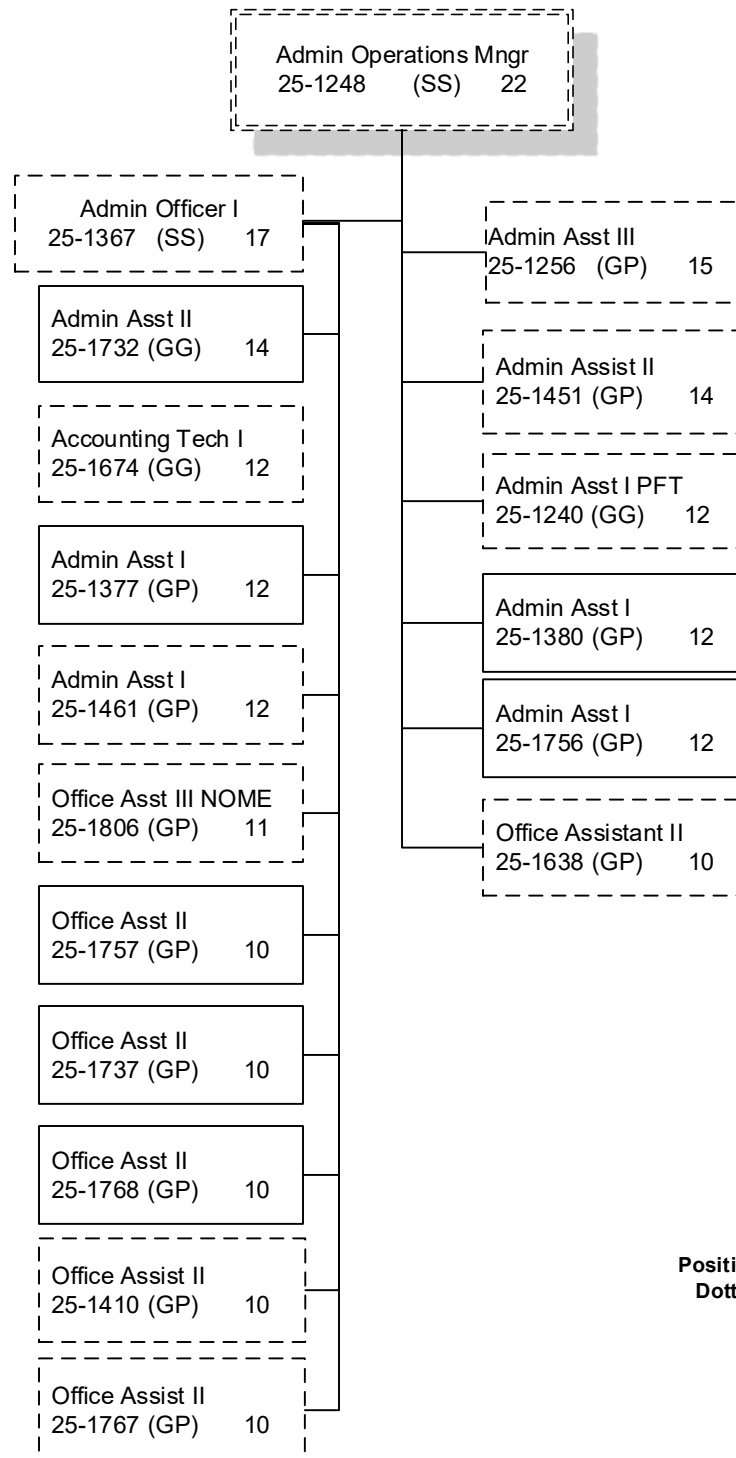
**Positions located in Fairbanks (JBA) unless otherwise noted.  
 Dotted line positions are not budgeted in this component.**

(s) = Seasonal Position



Positions	Total
Full-Time	7
Seasonal	0
<b>Total</b>	<b>7</b>

Positions located in Fairbanks (JBA) unless otherwise noted.  
 Dotted line positions are not budgeted in this component.



Positions	Total
Full-Time	7
Seasonal	0
<b>Total</b>	<b>7</b>

**Positions located in Fairbanks (JBA) unless otherwise noted.  
 Dotted line positions are not budgeted in this component.**