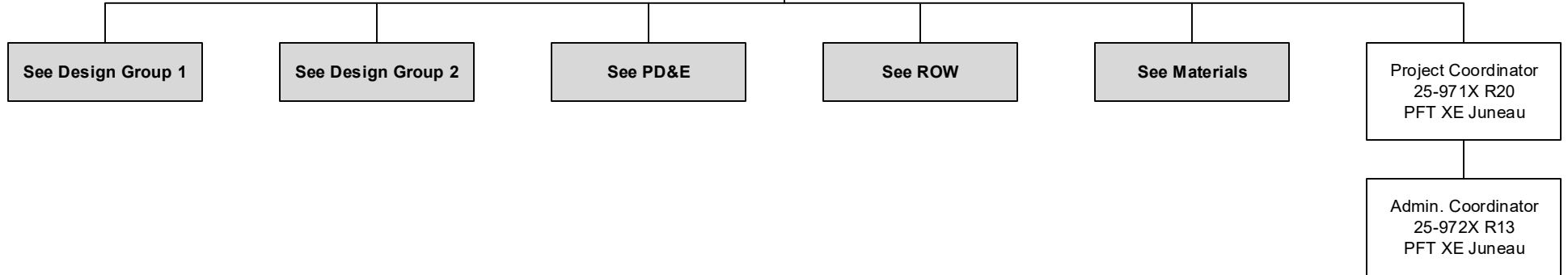


Department of Transportation and Public Facilities  
RDU/Component: Design, Engineering and Construction /  
Southcoast Design and Engineering Services (2300)  
FY2020 Governor's Budget  
Position Totals: PFT 70/ PPT 5/ NP 3 = 78 Total

Division Director  
25-2264 R27  
PFT PX Juneau

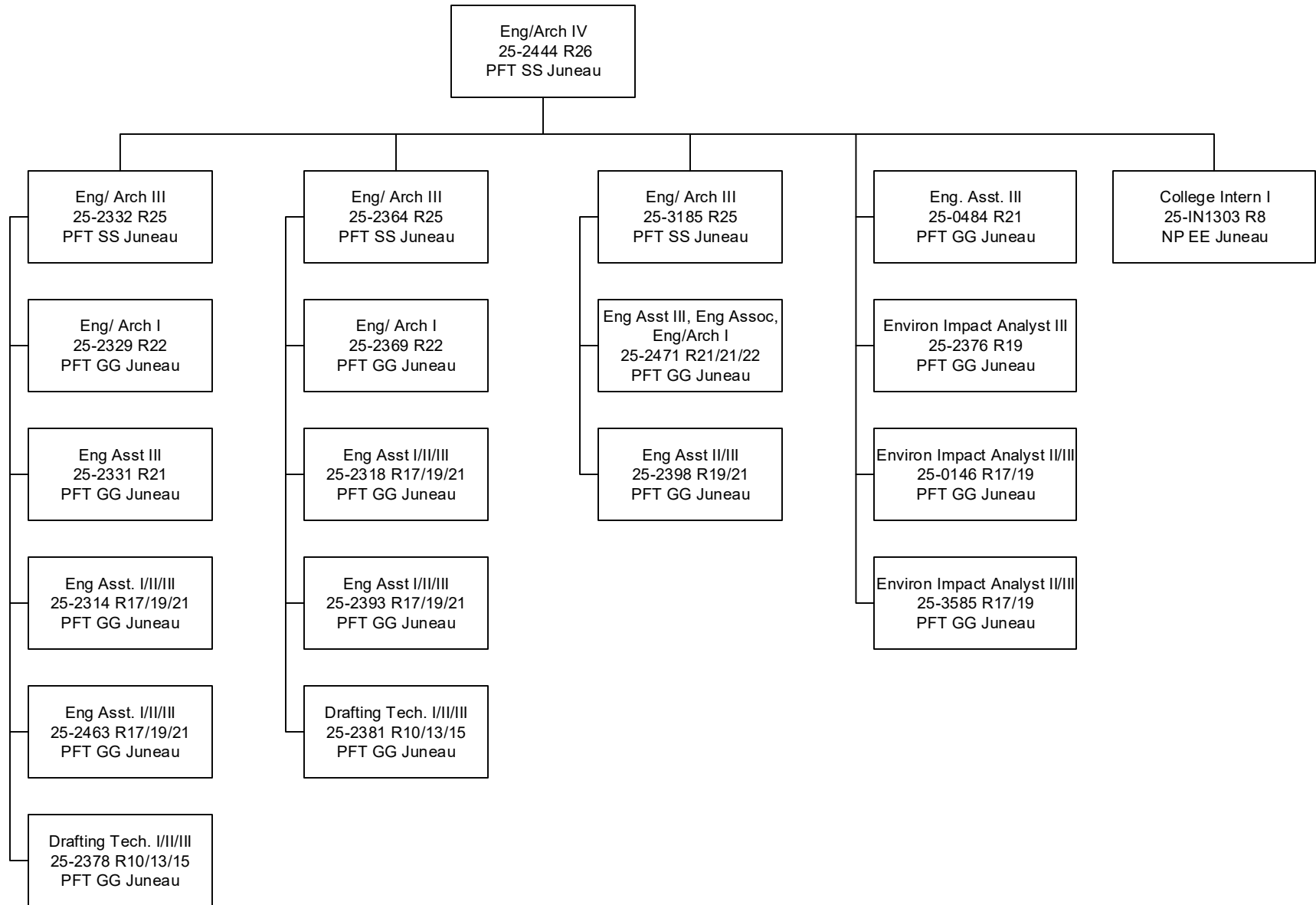
Eng /Arch V  
25-2300 R27  
PFT SS Juneau



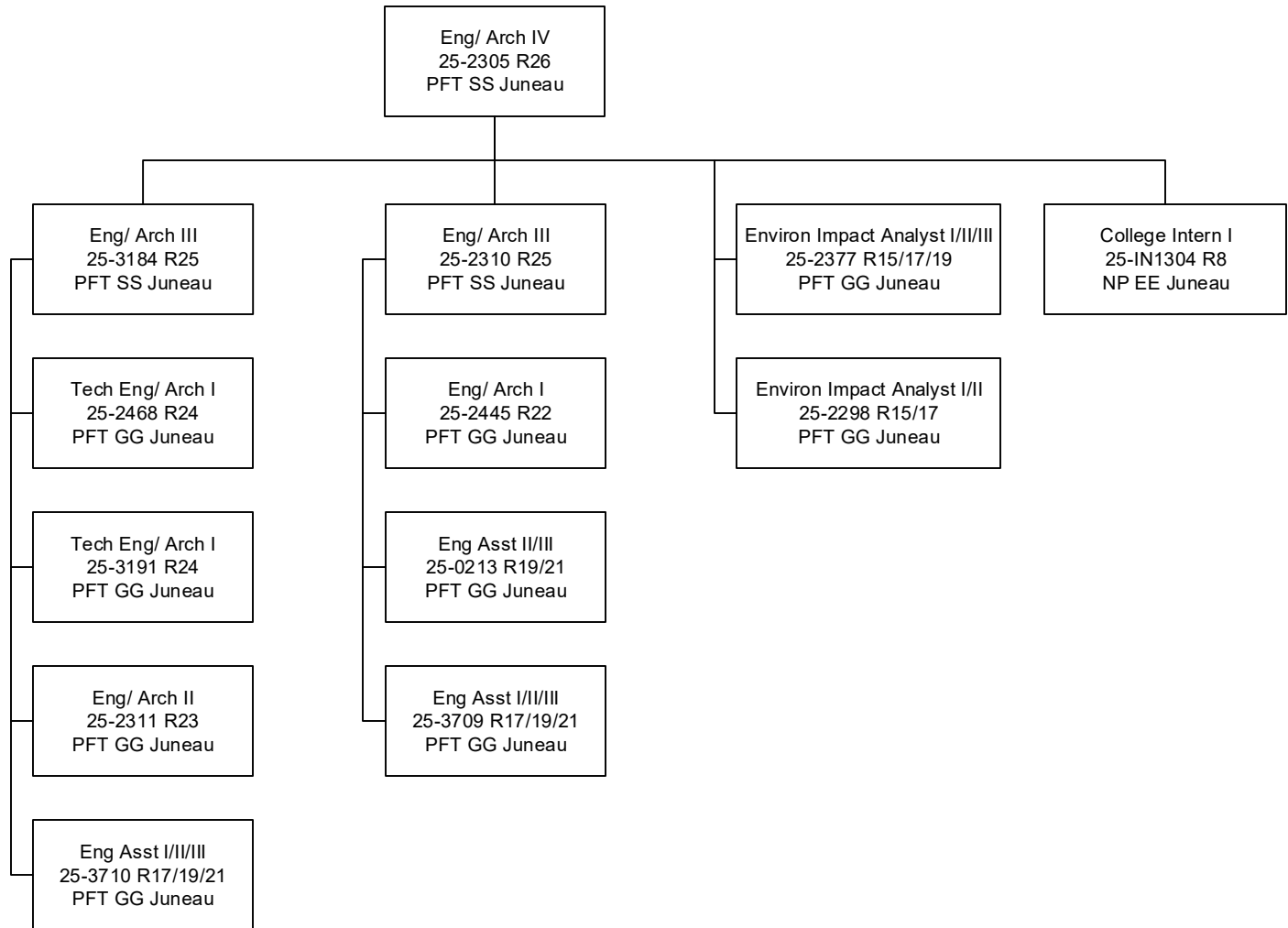
\*\*Budgeted in another component

Department of Transportation and Public Facilities  
 RDU/Component: Design, Engineering and Construction /  
 Southcoast Design and Engineering Services (2300)  
 FY2020 Governor's Budget

**DESIGN GROUP 1**

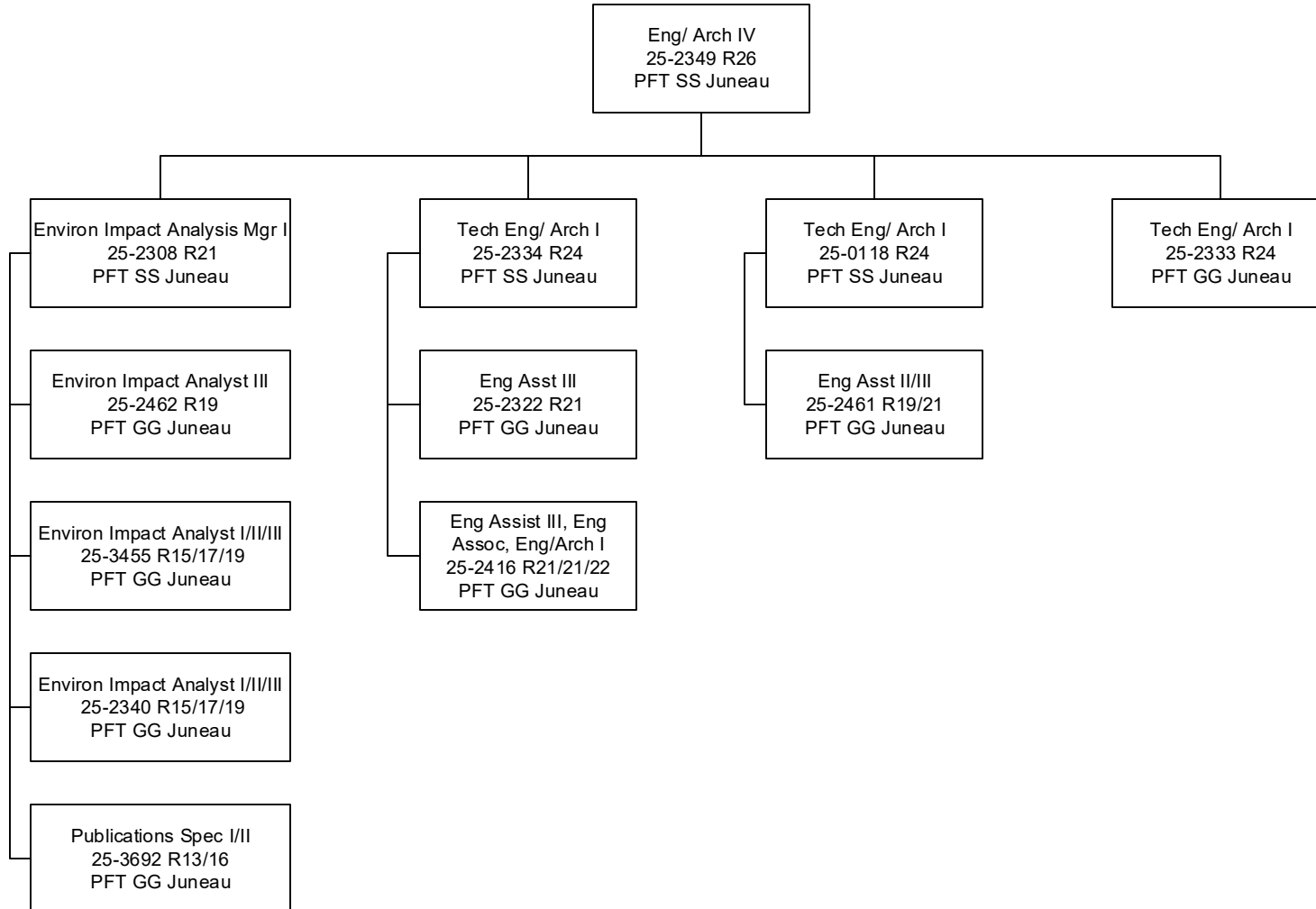


**DESIGN GROUP 2**



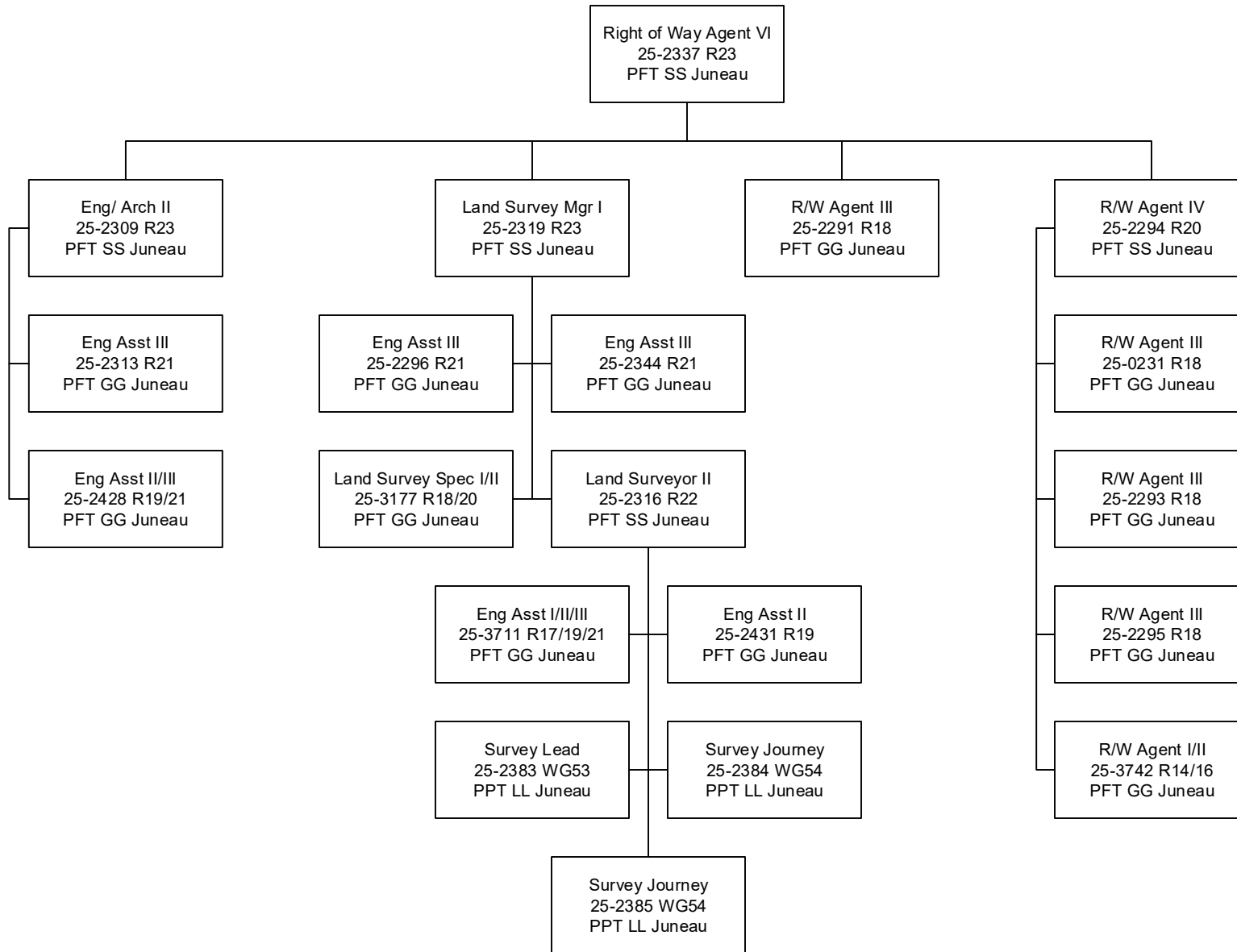
Department of Transportation and Public Facilities  
RDU/Component: Design, Engineering and Construction /  
Southcoast Design and Engineering Services (2300)  
FY2020 Governor's Budget

PD&E



Department of Transportation and Public Facilities  
 RDU/Component: Design, Engineering and Construction /  
 Southcoast Design and Engineering Services (2300)  
 FY2020 Governor's Budget

ROW



Department of Transportation and Public Facilities  
RDU/Component: Design, Engineering and Construction /  
Southcoast Design and Engineering Services (2300)  
FY2020 Governor's Budget

**MATERIALS**

