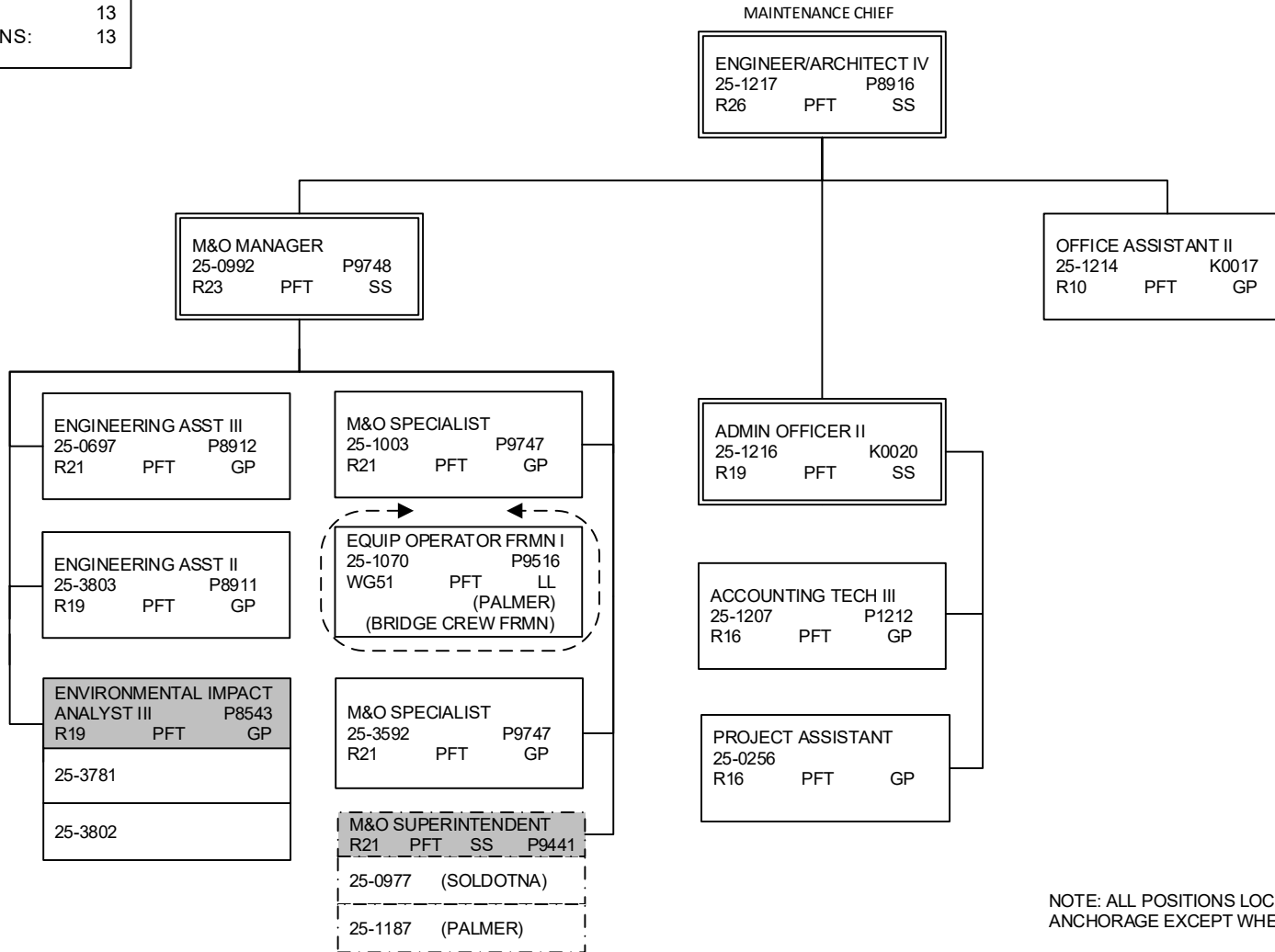


**DEPARTMENT OF TRANSPORTATION & PUBLIC FACILITIES
RDU: HIGHWAYS, AVIATION AND FACILITIES
COMPONENT: CENTRAL REGION HIGHWAYS & AVIATION (564)
FY2020 GOVERNOR'S BUDGET**

COMPONENT TOTAL:	185
FULLTIME POSITIONS:	167
PARTTIME POSITIONS:	4
NONPERM POSITIONS:	14
PAGE TOTAL:	13
FULLTIME POSITIONS:	13

**MAINTENANCE &
OPERATIONS
ADMINISTRATION
Anchorage**



NOTE: ALL POSITIONS LOCATED IN ANCHORAGE EXCEPT WHERE NOTED.

DEPARTMENT OF TRANSPORTATION & PUBLIC FACILITIES
RDU: HIGHWAYS, AVIATION AND FACILITIES
COMPONENT: CENTRAL REGION HIGHWAYS & AVIATION (564)
FY2020 GOVERNOR'S BUDGET

TOTAL POSITIONS THIS DISTRICT 58
 FULL TIME POSITIONS 50
 PART TIME POSITIONS 4
 NON PERM POSITIONS 4

ANCHORAGE DISTRICT

ENGINEER/ARCHITECT IV
 25-1217 P8916
 R26 PFT SS

M&O SUPERINTENDENT
 25-0981 P9441
 R21 PFT SS

SAFETY & EMERGENCY
 25-1182 S&E SUPPORT SPEC
 P7852 R17 PFT GP

ADMIN ASSISTANT II
 25-1036 K0018
 R14 PFT GP

OFFICE ASSISTANT II
 25-0980 K0017
 R10 PFT GP

EQ OP FOREMAN II
 25-1090 P9517
 WG50 PFT LL

EQ OP JRNY III/LD
 25-1133 P9511
 WG52 PFT LL

EQ OP JRNY III/LD
 25-1088 P9511
 WG52 PFT LL

EQ OP JRNY III/LD
 25-3434 P9511
 WG52 PFT LL

EQ OP JRNY III/LD
 25-1068 P9511
 WG52 PFT LL

SILVERTIP 1 AIRPORT
 EQ OP JRNY III/LD
 25-1041 P9511
 WG52 PFT LL

GIRDWOOD 2 APTS
 EQ OP JRNY III/LD
 25-1096 P9511
 WG52 PFT LL

EQ OP JRNY II P9511
 WG53 PFT LL

25-1071

25-1083

25-1123

25-1134

25-1162

EQ OP JRNY I P9511
 WG54 PFT LL

25-1079

EQ OP JRNY II P9511
 WG53 PFT LL

25-0982

25-1072

25-1073

25-1089

25-1142

EQ OP JRNY I P9511
 WG54 PFT LL

25-1135

EQ OP JRNY II P9511
 WG53 PFT LL

25-1030

25-1136

25-1146

EQ OP JRNY I P9511
 WG54 PFT LL

25-1075

25-1084

25-1086

25-1161

EQ OP JRNY II P9511
 WG53 PFT LL

25-0997

25-1077

25-1137

25-1138

EQ OP JRNY I P9511
 WG54 PFT LL

25-1009

25-1078

25-1081

EQ OP JRNY II P9511
 WG53 PFT LL

25-1025

25-1042

25-1045

25-1080

EQ OP JRNY II P9511
 WG53 PFT LL

25-1044

25-1097

25-1098

25-3432

25-3433

EQ OP JRNY I / II FLEX
 WG54/53 P9511
 PFT LL

25-1099

MAINT SPEC
 ELECTRICIAN JRNY II
 WG51 PFT LL P9325

25-1007

25-1008

EQ OP JRNY II P9511
 WG53 PFT LL

25-1082

EQ OP SUB JRNY I P9511
 WG58 NP LL

25-N10056

25-N10057

25-N10058

25-N10059

EQ OP JRNY I P9511
 WG54 PPT LL

25-3782	25-3785
25-3783	25-3788

NOTE: ALL POSITIONS LOCATED IN ANCHORAGE EXCEPT WHERE NOTED.

DEPARTMENT OF TRANSPORTATION & PUBLIC FACILITIES
RDU: HIGHWAYS, AVIATION AND FACILITIES
COMPONENT: CENTRAL REGION HIGHWAYS & AVIATION (564)
FY2020 GOVERNOR'S BUDGET

MATSU DISTRICT

TOTAL POSITIONS THIS DISTRICT 41
 FULL TIME POSITIONS 37
 NON PERM POSITIONS 4

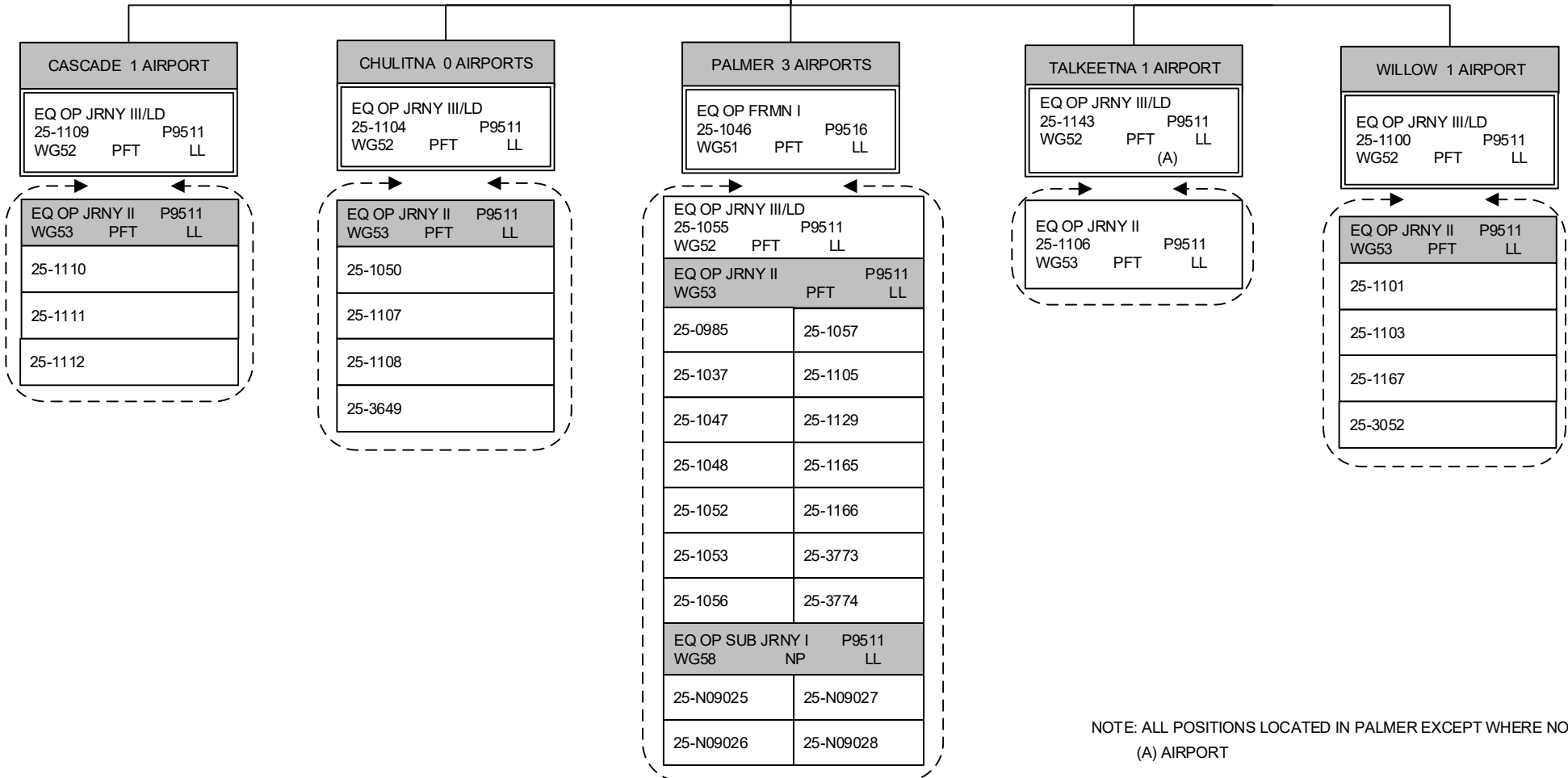
M&O MANAGER
 25-0992 P9748
 R23 PFT SS

M&O SUPERINTENDENT
 25-1187 P9441
 R21 PFT SS

MAINT SPEC ELEC JRNY II
 P9325 WG51 PFT LL
 (DISTRICTWIDE)
 25-0549
 25-1102

ACCT TECH II
 25-0979 P1211
 R14 PFT GP

OFFICE ASSISTANT II
 25-0935 K0017
 R10 PFT GP



NOTE: ALL POSITIONS LOCATED IN PALMER EXCEPT WHERE NOTED.
 (A) AIRPORT

DEPARTMENT OF TRANSPORTATION & PUBLIC FACILITIES
RDU: HIGHWAYS, AVIATION AND FACILITIES
COMPONENT: CENTRAL REGION HIGHWAYS & AVIATION (564)
FY2020 GOVERNOR'S BUDGET

PENINSULA DISTRICT

TOTAL POSITIONS THIS DISTRICT 49
 FULL TIME POSITIONS 43
 NON PERM POSITIONS 6

M&O MANAGER
 25-0992 P9748
 R23 PFT SS

M&O SUPERINTENDENT
 25-0977 P9441
 R21 PFT SS

MTN SPEC ELECT JRNY II
 P9325 WG51 PFT LL
 (DISTRICTWIDE)
 25-0565
 25-1021

ACCT TECH II
 25-1010 P1211
 R14 PFT GG

OFFICE ASSISTANT II
 25-0983 K0017
 R10 PFT GP

HOMER 1 AIRPORT
 EQ OP FRMN II
 25-1141 P9517
 WG50 PFT LL

NINILCHIK 1 AIRPORT
 EQ OP JRNY III/LD
 25-1127 P9511
 WG52 PFT LL

SOLDOTNA 1 AIRPORT
 EQ OPER FRMN I
 25-1012 P9516
 WG51 PFT LL

NORTH KENAI
 EQ OP JRNY III/LD
 25-1115 P9511
 WG52 PFT LL

CROWN POINT (SEWARD)
 3 AIRPORTS
 EQ OP JRNY III/LD
 25-1118 P9511
 WG52 PFT LL

OFFICE ASSIST II
 25-0569 P1135
 R10 PFT GP

EQ OP JRNY III/LD P9511
 WG52 PFT LL

25-1017 (A)

25-1060 (A)

25-1066 (A)

EQ OP JRNY II P9511
 WG53 PFT LL

25-1019

25-1130

25-1177

EQ OP JRNY III/LD P9511
 25-1026 WG52 PFT LL

EQ OP JRNY II P9511 WG53 PFT LL	EQ OP SUB JRNY I P9511 WG58 NP LL
25-0998	25-N09019
25-1020	25-N09020
25-1022	25-N09034
25-1064	25-N09035
25-1076	25-N09036
25-1120	25-N09037
25-1126	
25-3429	
25-3430	

EQ OP JRNY II P9511
 WG53 PFT LL

25-1018

25-1153

EQ OP JRNY II P9511
 WG53 PFT LL

25-1091

25-1119

25-1121

SELDOVIA 3 AIRPORTS
 EQ OP JRNY III/LD
 25-1094 P9511
 WG52 PFT LL

HOMER HIGHWAYS
 EQ OP JRNY III/LD
 25-1058 P9511
 WG52 PFT LL

EQ OP JRNY II P9511
 WG53 PFT LL

25-1061	25-1067
25-1062	25-1128
25-1065	

QUARTZ CREEK 1 APT
 EQUIP OP JRNY III/LD
 25-1122 P9511
 WG52 PFT LL

EQ OP JRNY II P9511
 WG53 PFT LL

*25-1013

25-1124

25-3431

SEASONAL CREW
 * Bridge Crew
 (A) AIRPORT

NOTE: ALL POSITIONS LOCATED IN
 SOLDOTNA EXCEPT WHERE NOTED.

DEPARTMENT OF TRANSPORTATION & PUBLIC FACILITIES
RDU: HIGHWAYS, AVIATION AND FACILITIES
COMPONENT: CENTRAL REGION HIGHWAYS & AVIATION (564)
FY2020 GOVERNOR'S BUDGET

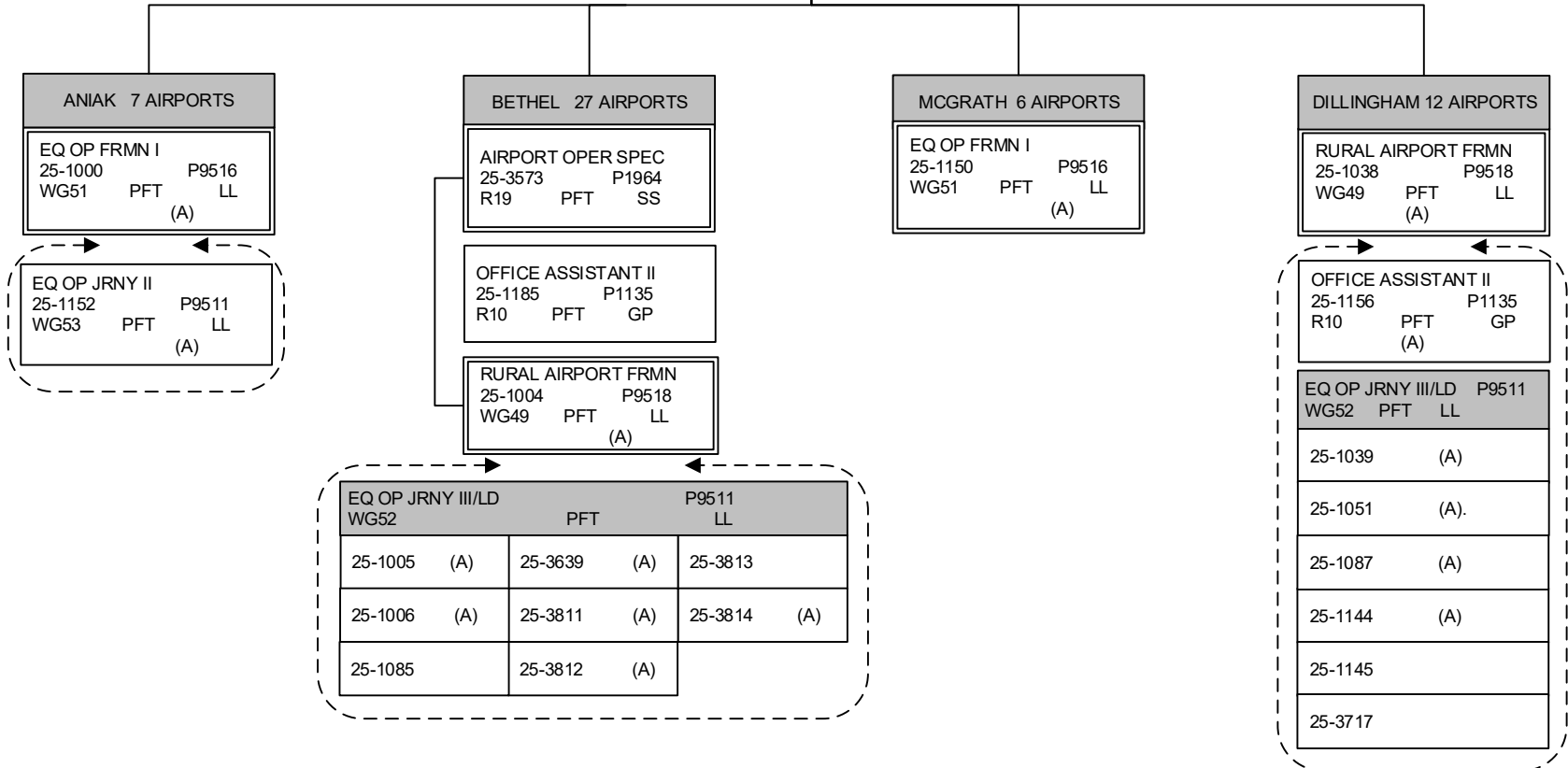
SOUTHWEST DISTRICT

TOTAL POSITIONS THIS DISTRICT 24
 FULL TIME POSITIONS 24

ENGINEER/ARCHITECT IV
 25-1217 P8916
 R26 PFT SS

M&O SUPERINTENDENT
 25-0974 P9441
 R21 PFT SS

ADMIN ASSISTANT II
 25-1169 K0018
 R14 PFT GP



NOTE: POSITIONS LOCATED IN ANCHORAGE
 EXCEPT WHERE NOTED.

(A) AIRPORT