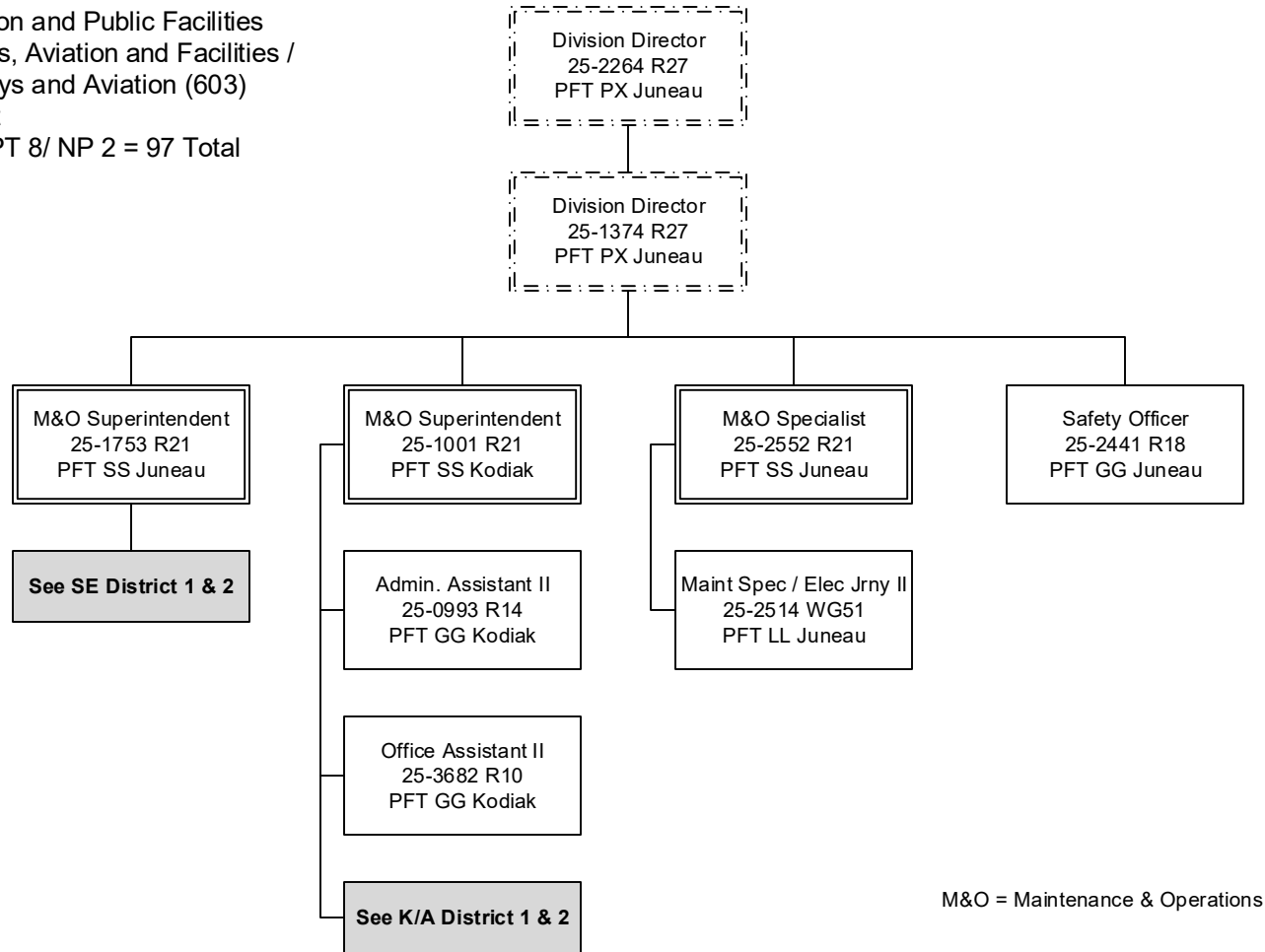


Department of Transportation and Public Facilities
 RDU/Component: Highways, Aviation and Facilities /
 Southcoast Region Highways and Aviation (603)
 FY2020 Governor's Budget
 Position Totals: PFT 87/ PPT 8/ NP 2 = 97 Total



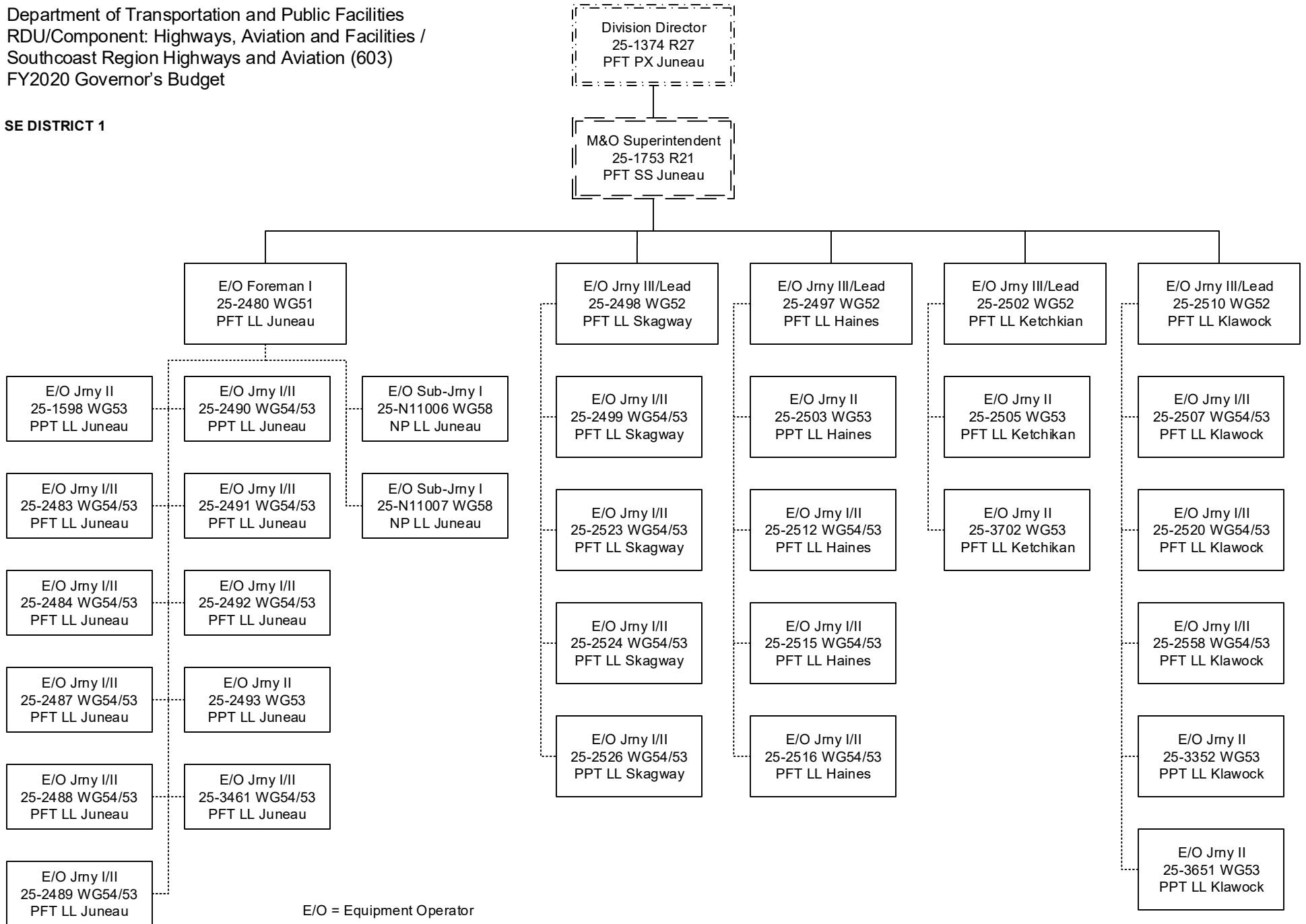
M&O = Maintenance & Operations

..... = Lead Authority

---**Budgeted in another component

Department of Transportation and Public Facilities
 RDU/Component: Highways, Aviation and Facilities /
 Southcoast Region Highways and Aviation (603)
 FY2020 Governor's Budget

SE DISTRICT 1



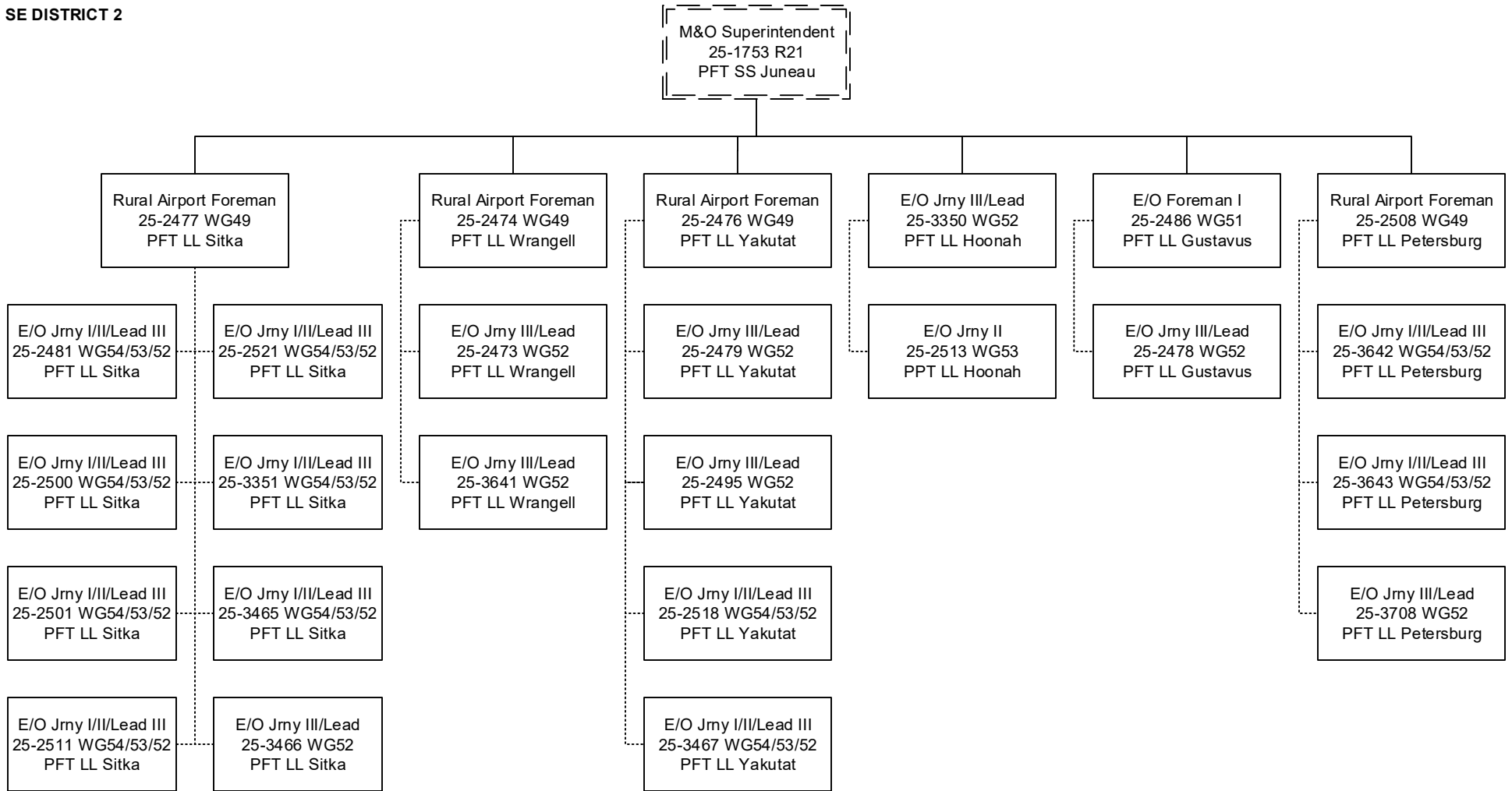
E/O = Equipment Operator

----- = Lead Authority

----- **Budgeted in another component

Department of Transportation and Public Facilities
 RDU/Component: Highways, Aviation and Facilities /
 Southcoast Region Highways and Aviation (603)
 FY2020 Governor's Budget

SE DISTRICT 2



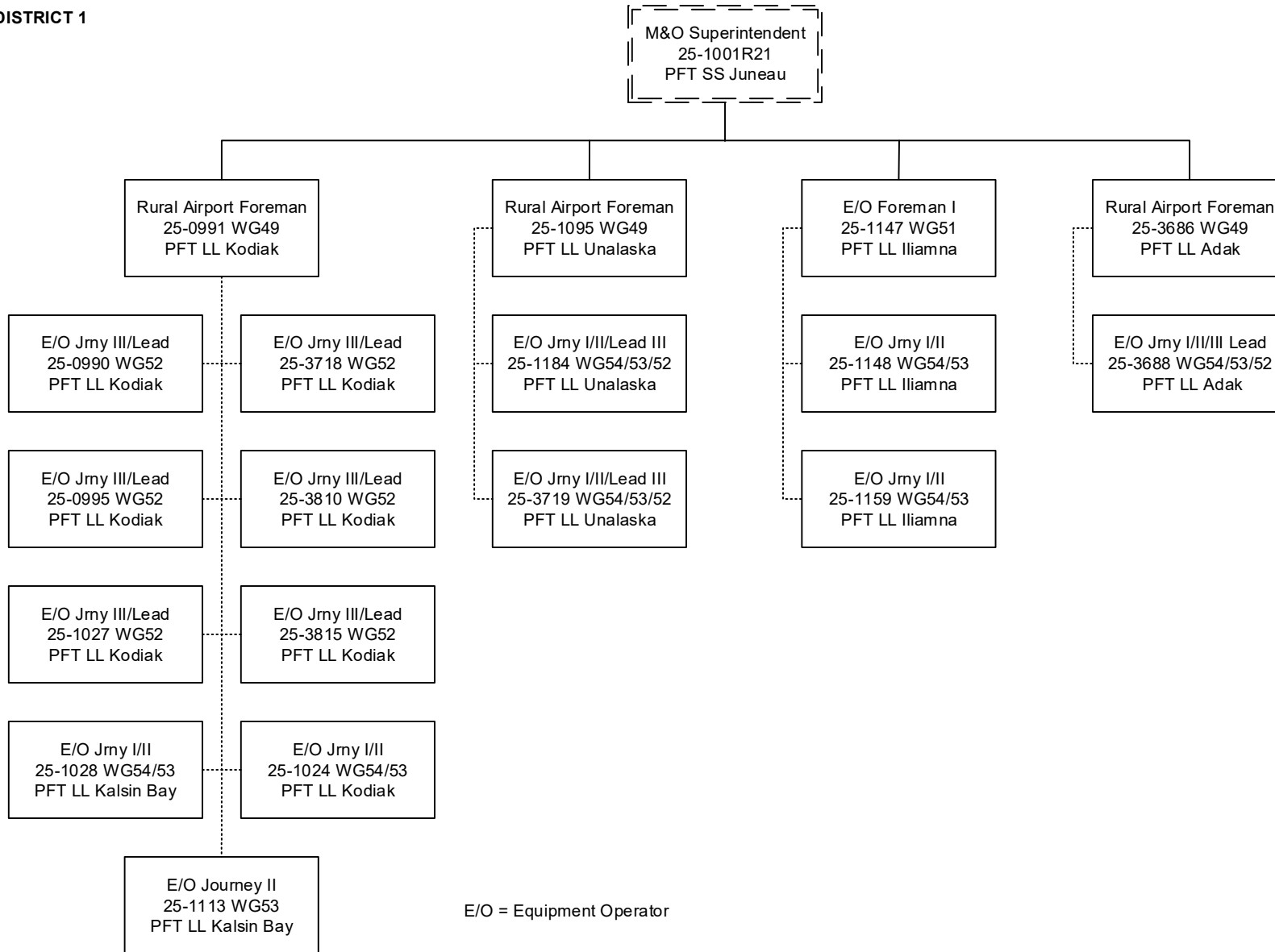
E/O = Equipment Operator

----- = Lead Authority

-----**Budgeted in another component

Department of Transportation and Public Facilities
 RDU/Component: Highways, Aviation and Facilities /
 Southcoast Region Highways and Aviation (603)
 FY2020 Governor's Budget

K/A DISTRICT 1

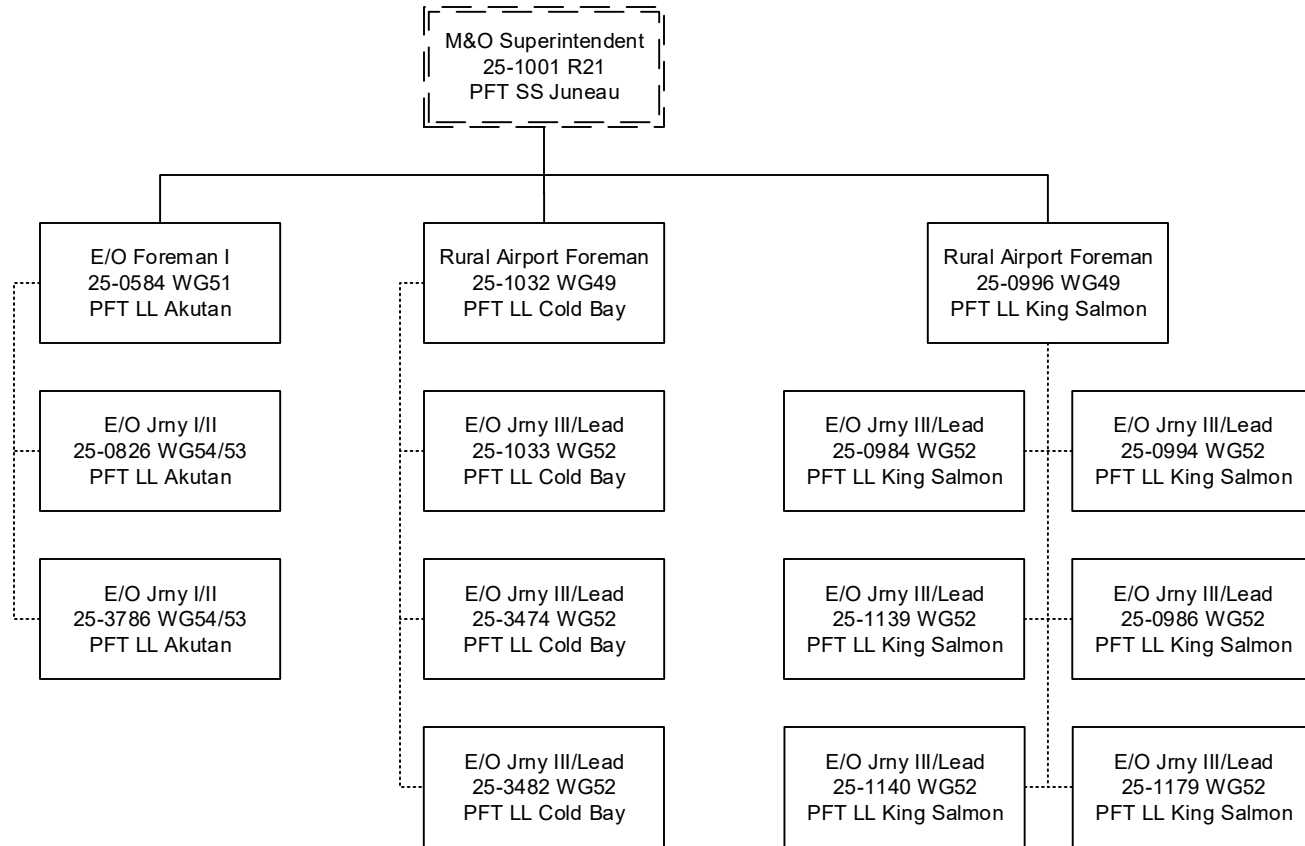


E/O = Equipment Operator

----- = Lead Authority

----- **Budgeted in another component

K/A DISTRICT 2



E/O = Equipment Operator

----- = Lead Authority

-.-.-.-.- **Budgeted in another component