

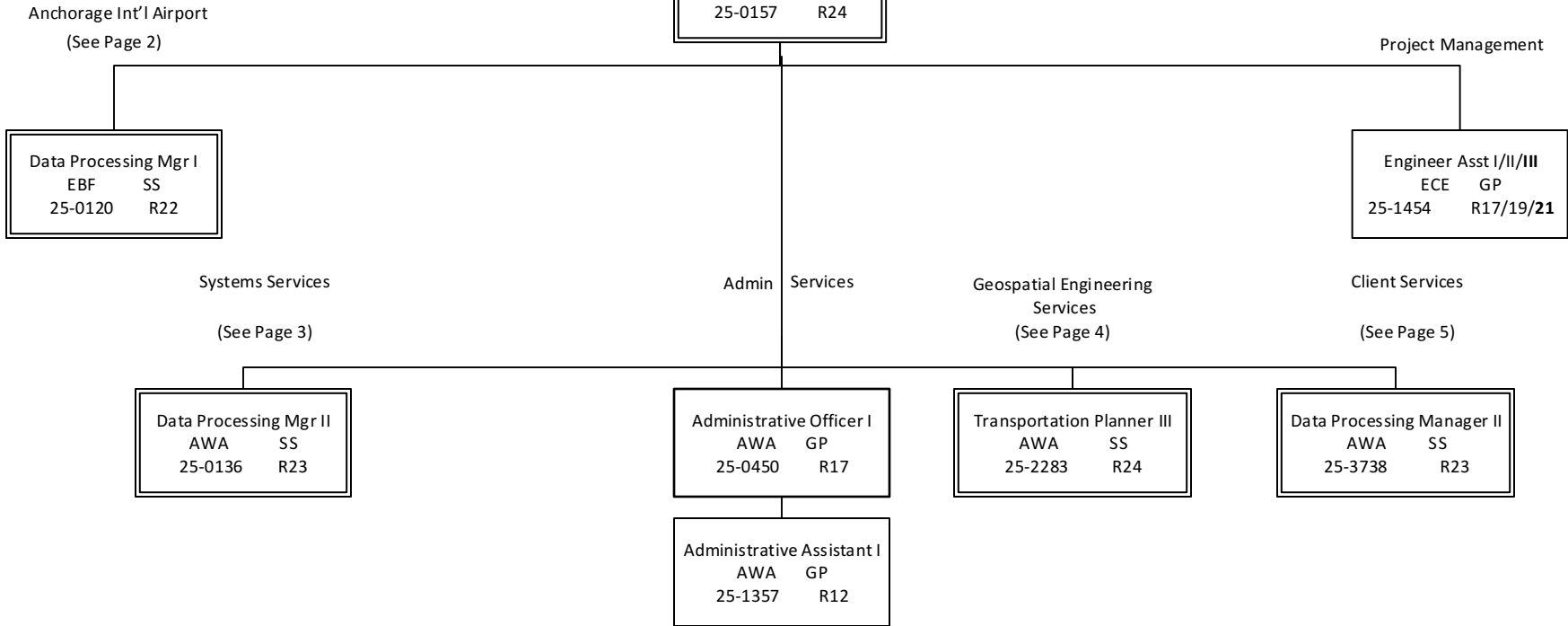
Department of Transportation & Public Facilities
 RDU: Administration and Support
 COMPONENT: Information Systems and Services (540)
 62 (59 PFT, 3 NP) Positions

Legend
 ACA = Ketchikan
 AWA = Juneau
 JBA = Fairbanks
 EBA = Anchorage
 EBF = Anch. Int'l Airport
 ECA = Wasilla

Department Technology
 Officer III
 AWA SS
 25-2554* R25

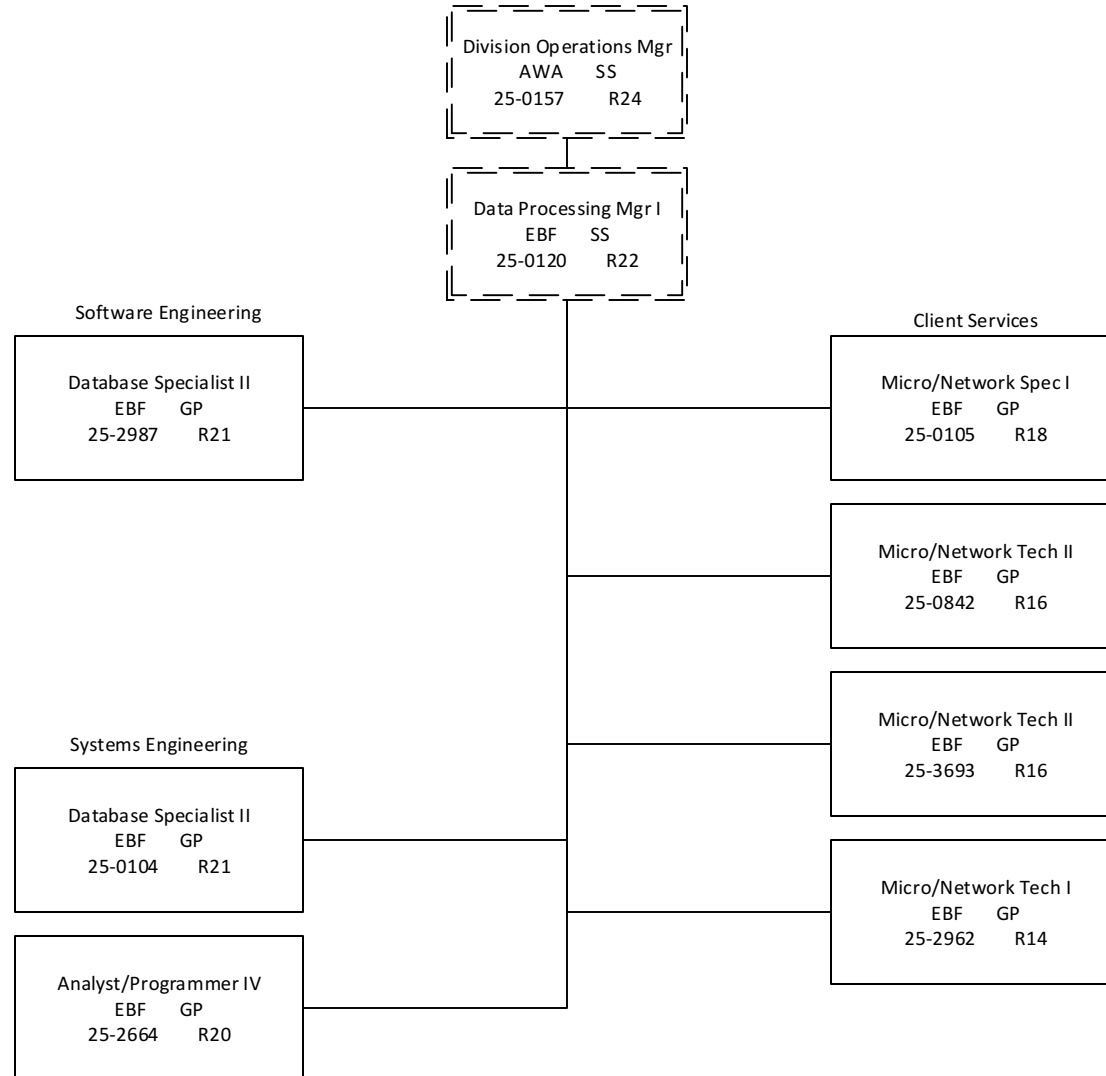
*Position is budgeted in the Alaska Division of
 Information Technology component (3141)

Division Operations Mgr
 AWA SS
 25-0157 R24



Department of Transportation & Public Facilities
 RDU: Administration and Support
 COMPONENT: Information Systems and Services (540)
 Anchorage International Airport
 7 PFT Positions

Legend
 ACA = Ketchikan
 AWA = Juneau
 JBA = Fairbanks
 EBA = Anchorage
 EBF = Anch. Int'l Airport
 ECA = Wasilla



Department of Transportation & Public Facilities
 RDU: Administration and Support
 COMPONENT: Information Systems and Services (540)
 Systems Services
 22 PFT Positions

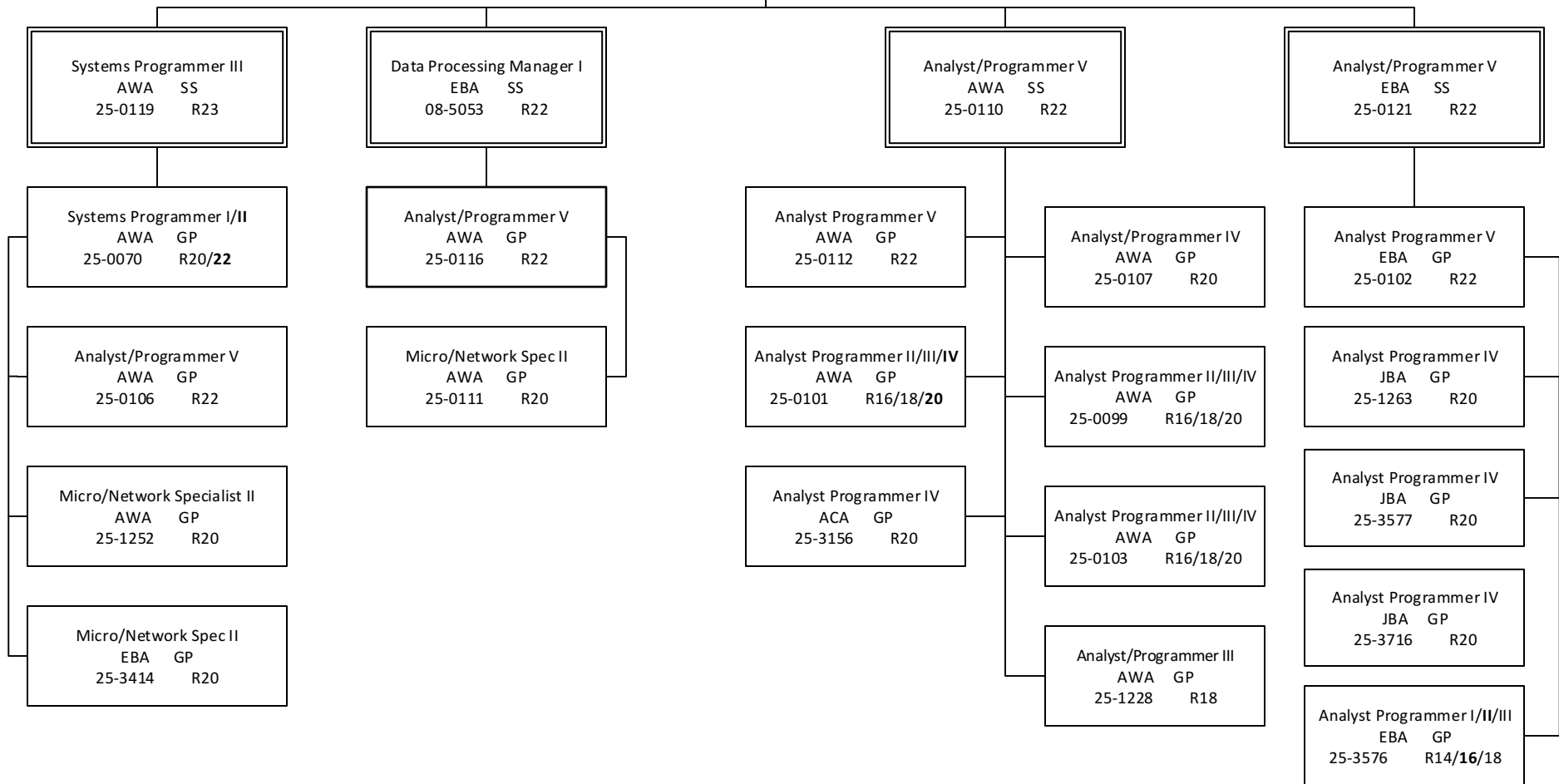
Legend
 ACA = Ketchikan
 AWA = Juneau
 JBA = Fairbanks
 EBA = Anchorage
 EBF = Anch. Int'l Airport
 ECA = Wasilla

Division Operations Mgr
 AWA SS
 25-0157 R24

Data Processing Mgr II
 AWA SS
 25-0136 R23

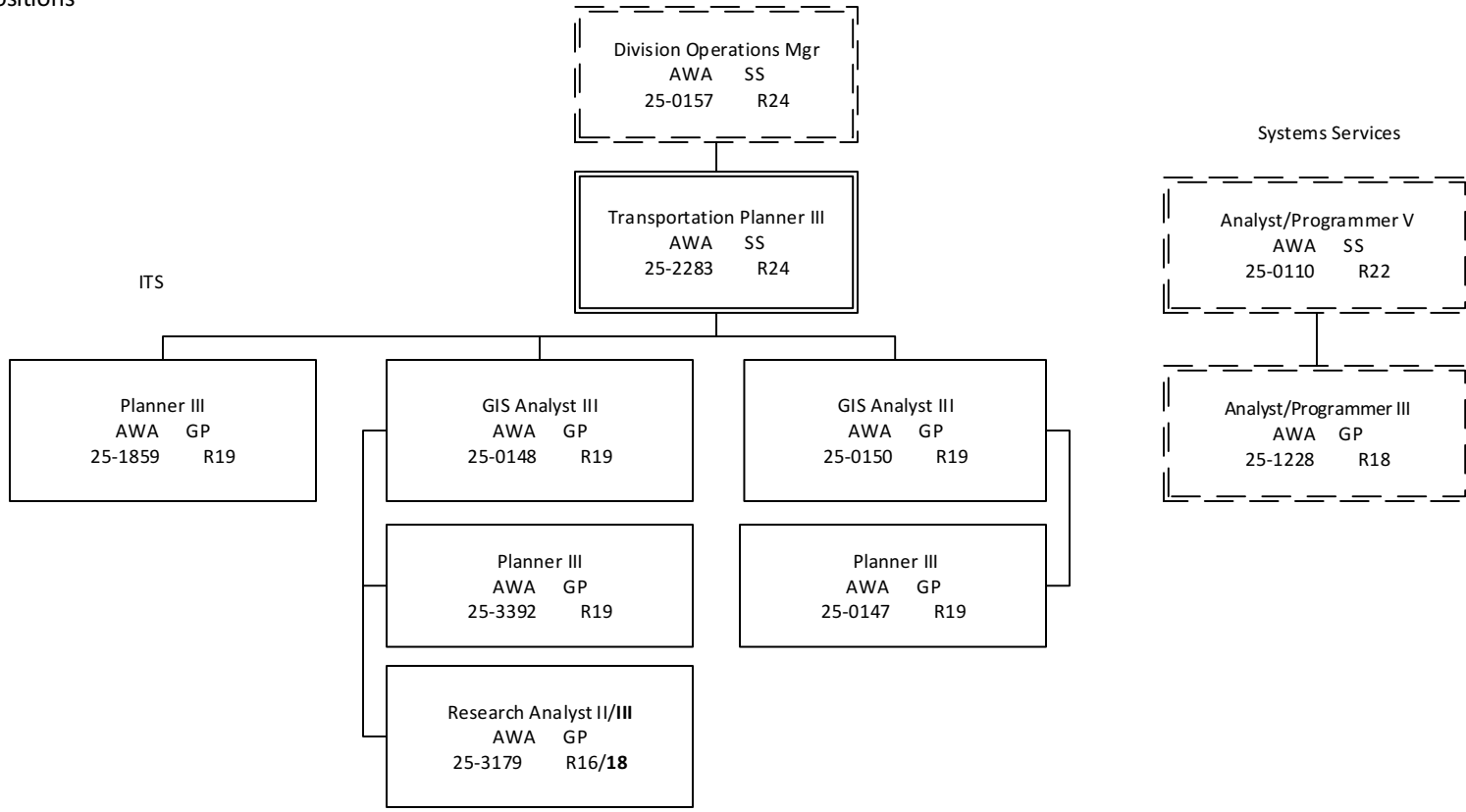
Systems Engineering

Software Engineering



Department of Transportation & Public Facilities
 RDU: Administration and Support
 COMPONENT: Information Systems and Services (540)
 Geospatial Engineering Services
 7 PFT Positions

Legend
 ACA = Ketchikan
 AWA = Juneau
 JBA = Fairbanks
 EBA = Anchorage
 EBF = Anch. Int'l Airport
 ECA = Wasilla



Department of Transportation & Public Facilities
 RDU: Administration and Support
 COMPONENT: Information Systems and Services (540)
 Client Services
 20 (17 PFT, 3 NP) Positions

Legend
 ACA = Ketchikan
 AWA = Juneau
 JBA = Fairbanks
 EBA = Anchorage
 EBF = Anch. Int'l Airport
 ECA = Wasilla

