

OIT Senior Management

02-T183
Chief Information Officer
R28 Juneau PX

02-3001
Deputy Chief Info Officer
R27 Anchorage PX

Business Office

Datacenter

Telecommunications

Security

02-6300
Deputy Director
R25 Juneau PX

02-6400
Chief Technology Officer II
R25 Juneau PX

07-5080
Chief Technology Officer II
R25 Juneau PX

02-X069
Chief Technology Officer III
R26 Anchorage PX

**Strategic Partners
Manager**

**Strategic Partner
Services**

02-5174
Chief Technology Officer III
R26 Anchorage PX

02-6301
Chief Technology Officer I
R24 Anchorage PX

Department Technology Officers

02-T183
Chief Information Officer
R28 Juneau PX

02-5174
Strategic Partners Manager
R26 Anchorage PX

DHSS

06-0617
Dept Technology Officer III
R25 Juneau CL

DCCED

08-1122
Dept Technology Officer II
R24 Juneau CL

DOA

02-3080
Dept Technology Officer III
R25 Juneau CL

DOTPF

25-2554
Dept Technology Officer III
R25 Juneau CL

DOR

05-7720
Dept Technology Officer I
R23 Juneau CL

DOC

20-1023
Dept Technology Officer I
R23 Juneau CL

DNR

10-0377
Dept Technology Officer II
R24 Anchorage CL

DOLWD

07-5336
Dept Technology Officer II
R24 Juneau CL

DFG

11-0248
Dept Technology Officer II
R24 Juneau CL

DEED

18-7552
Dept Technology Officer I
R23 Juneau CL

LAW

03-0257
Dept Technology Officer I
R23 Anchorage CL

DEC

04-1139
Dept Technology Officer II
R24 Anchorage CL

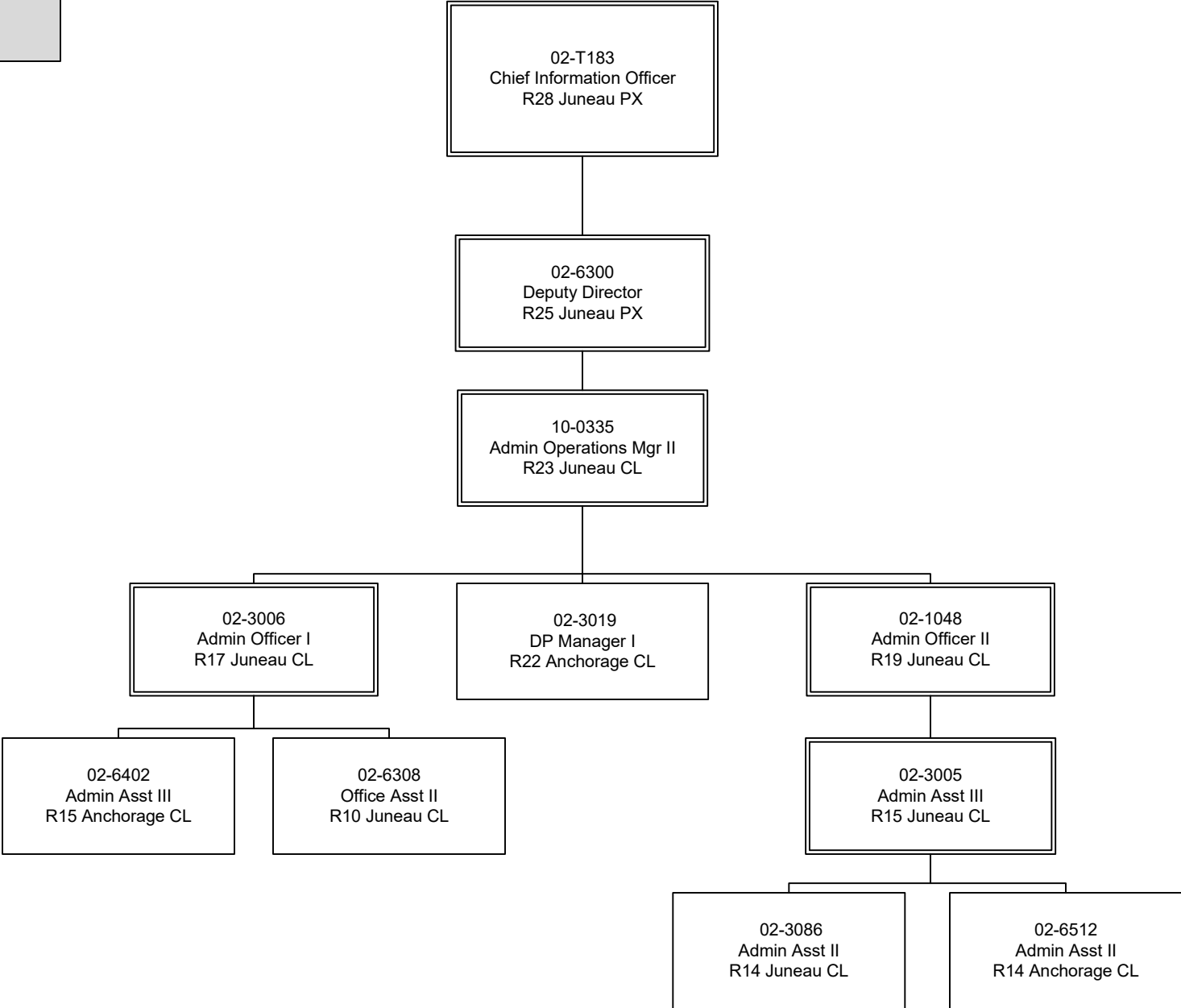
DPS

12-2016
Dept Technology Officer III
R25 Anchorage CL

DMVA

09-0415
Dept Technology Officer I
R23 JBER CL

Business Office



Portfolio, Planning, and Policy

02-T183
Chief Information Officer
R28 Juneau PX

02-3001
Deputy Chief Info Officer
R27 Anchorage PX

07-5400
P3 Manager (Deputy)
R24 Juneau CL

01-616X
Tech Architect/Chief Data Officer
R24 Juneau PX

02-6516
Program Coordinator II
R20 Anchorage CL

04-6064
P3 Manager (Portfolio)
R24 Anchorage CL

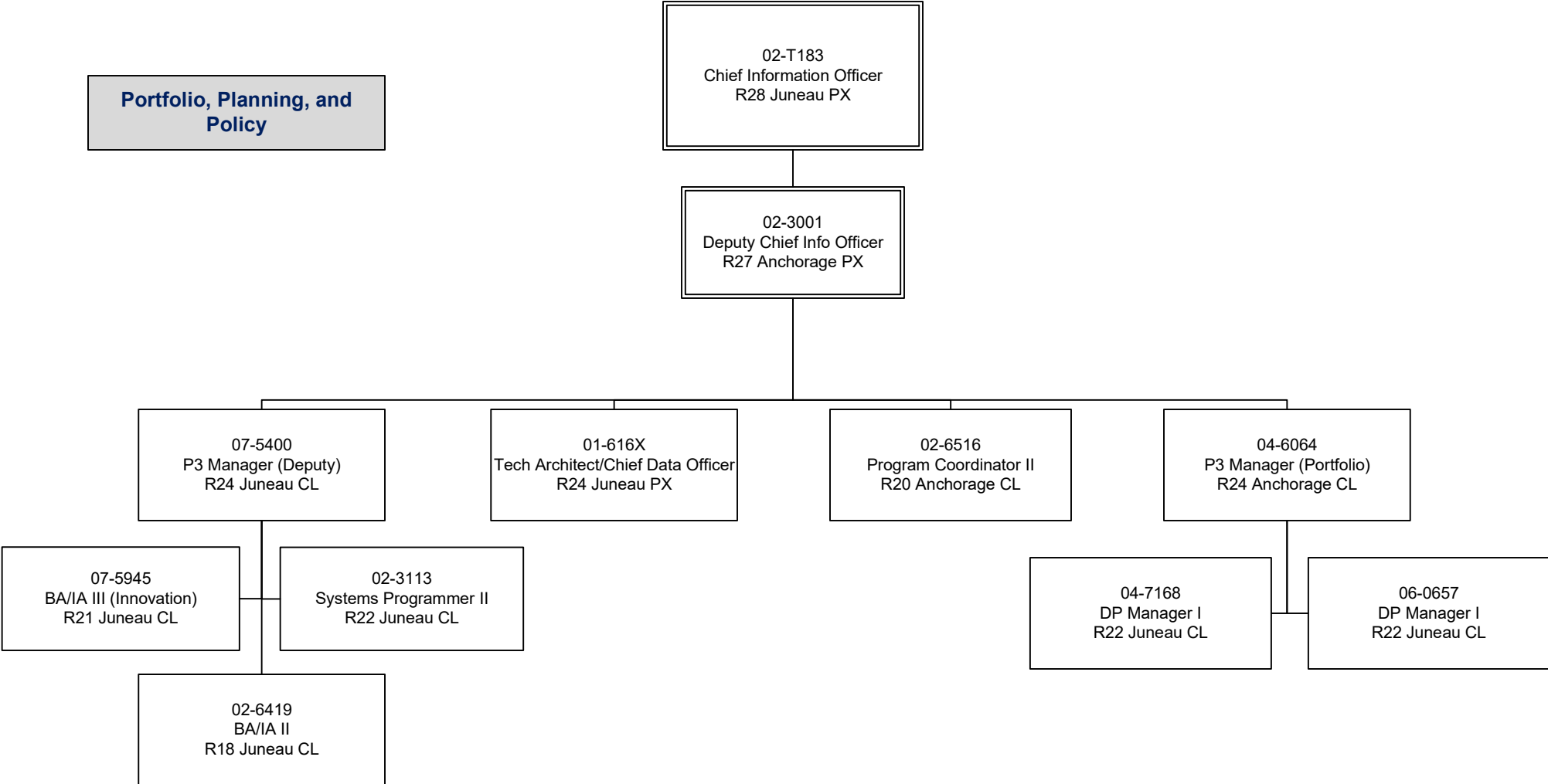
07-5945
BA/IA III (Innovation)
R21 Juneau CL

02-3113
Systems Programmer II
R22 Juneau CL

02-6419
BA/IA II
R18 Juneau CL

04-7168
DP Manager I
R22 Juneau CL

06-0657
DP Manager I
R22 Juneau CL



Security

02-T183
Chief Information Officer
R28 Juneau PX

02-X069
Chief Technology Officer III
R26 Anchorage PX

02-6413
(Deputy Chief) Info Security
Officer
R24 Juneau CL

02-6513
Systems Programmer III
R23 Anchorage CL

02-6417
Systems Programmer III
R23 Juneau CL

02-9014
Systems Programmer II
R22 Anchorage CL

02-6501
Data Processing Mgr I
R22 Juneau CL

02-1534
Micro/Network Spec I
R18 Anchorage CL

02-6529
Systems Programmer II
R22 Juneau CL

10-0386
Systems Programmer III
R23 Juneau CL

25-0139
Systems Programmer II
R22 Juneau CL

02-6527
Systems Programmer III
R23 Juneau CL

02-3117
Systems Programmer II
R22 Anchorage CL

07-5758
Systems Programmer II
R22 Anchorage CL

Strategic Partner Services 1

02-T183
Chief Information Officer
R28 Juneau PX

02-6301
Chief Technology Officer I
R24 Anchorage PX

02-1105
Micro/Network Spec II
R20 Anchorage CL

10-0283
Micro/Network Spec I
R18 Anchorage CL

03-0334
Micro/Network Tech II
R16 Anchorage CL

03-0200
Micro/Network Tech II
R16 Anchorage CL

03-6525
Micro/Network Spec I
R18 Anchorage CL

18-7686
Micro/Network Spec II
R20 Anchorage CL

12-5108
Micro/Net Spec I
R18 Anchorage CL

09-0227
Micro/Network Tech II
R16 Elmendorf CL

12-3804
DP Manager I
R22 Anchorage CL

10-0284
Micro/Network Tech II
R16 Anchorage CL

09-0380
Micro/Network Tech II
R16 Elmendorf CL

10-0432
Micro/Network Tech II
R16 Anchorage CL

09-0334
Micro/Network Tech II
R16 Elmendorf CL

Strategic Partner Services 2

02-T183
Chief Information Officer
R28 Juneau PX

02-6301
Chief Technology Officer I
R24 Anchorage PX

06-4500
Micro/Network Spec I
R18 Anchorage CL

20-1010
Micro/Network Tech II
R16 Anchorage CL

08-3096
Micro/Network Spec I
R18 Anchorage CL

20-1088
Micro/Network Tech II
R16 Makenzie Point CL

05-7703
Micro/Network Spec II
R20 Anchorage CL

18-7605
Micro/Network Spec II
R20 Fairbanks CL

06-1010
Micro/Network Tech II
R16 Anchorage CL

02-6616
Micro/Network Tech II
R16 Anchorage CL

04-7068
Micro/Network Tech II
R16 Anchorage CL

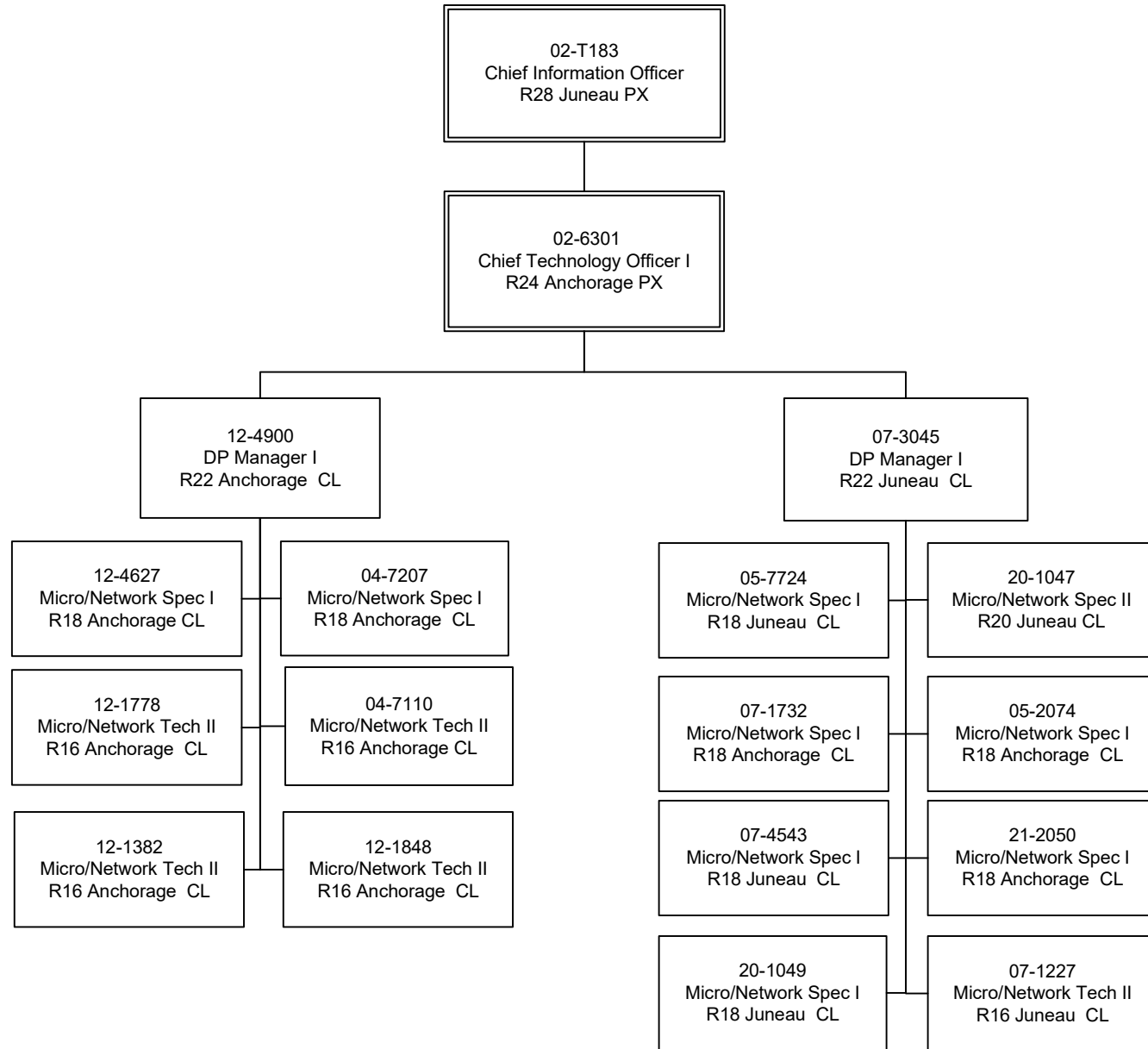
25-2297
Micro/Network Spec I
R18 Fairbanks CL

06-8596
Micro/Network Tech II
R16 Anchorage CL

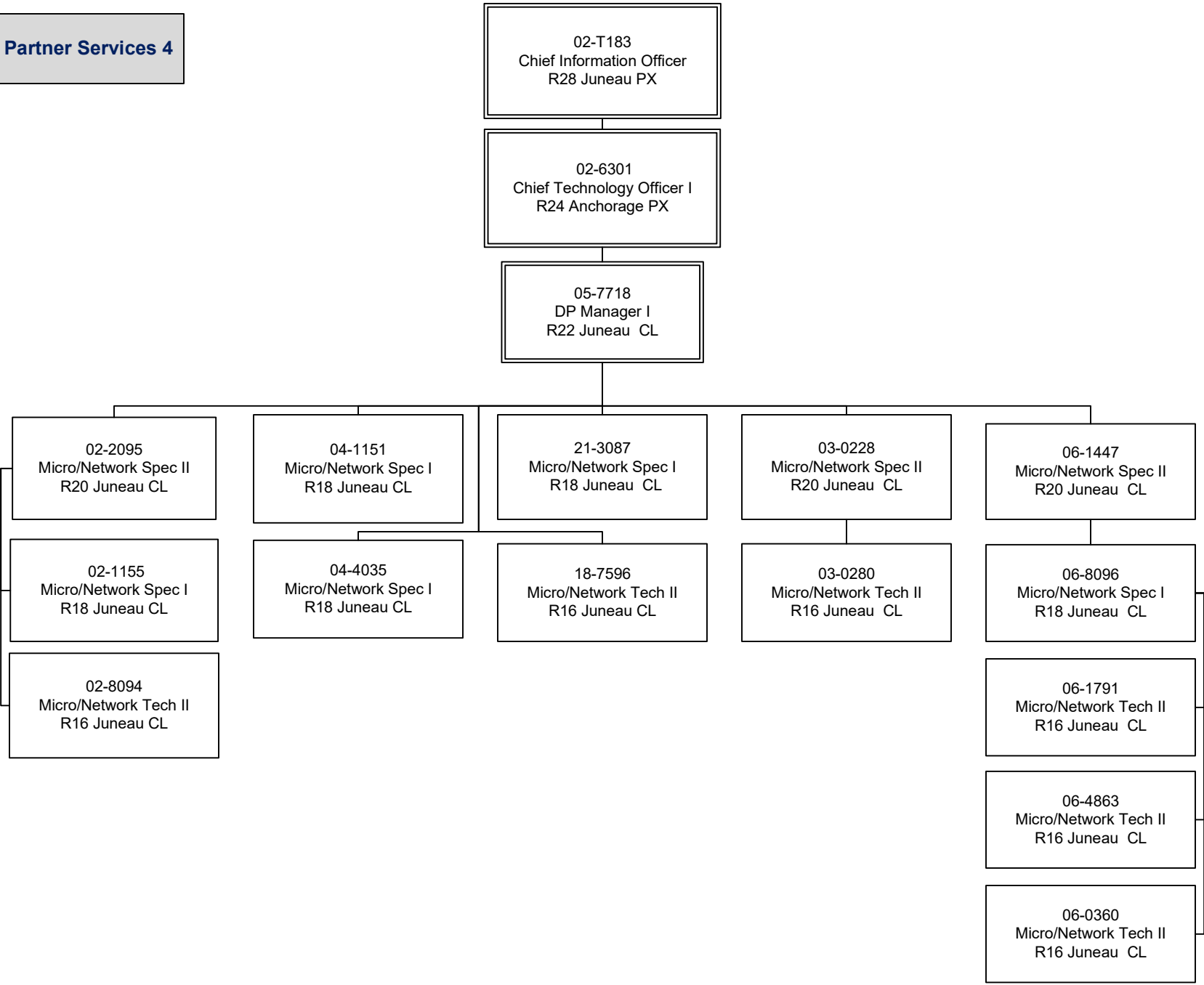
06-1913
Micro/Network Tech II
R16 Anchorage CL

10-0423
Micro/Network Spec I
R18 Fairbanks CL

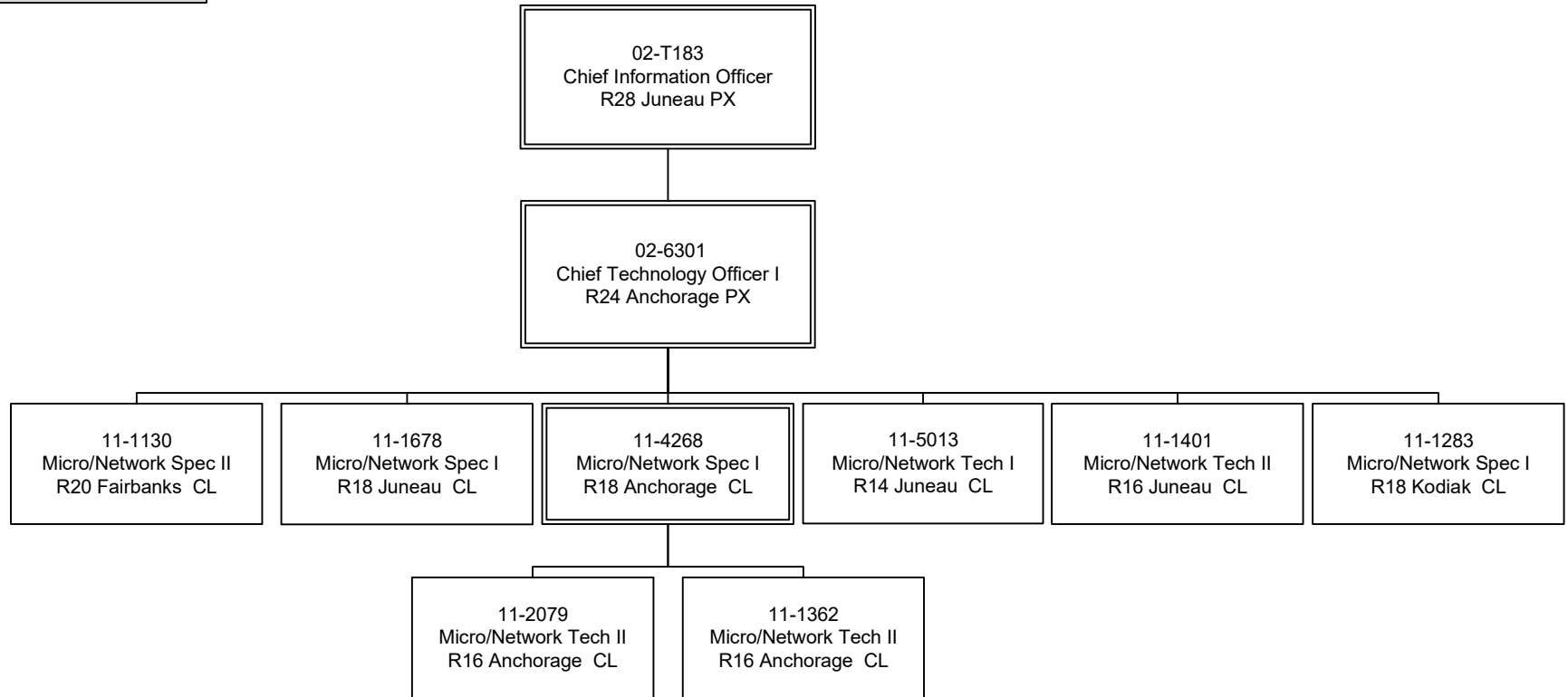
Strategic Partner Services 3



Strategic Partner Services 4



Strategic Partner Services 5

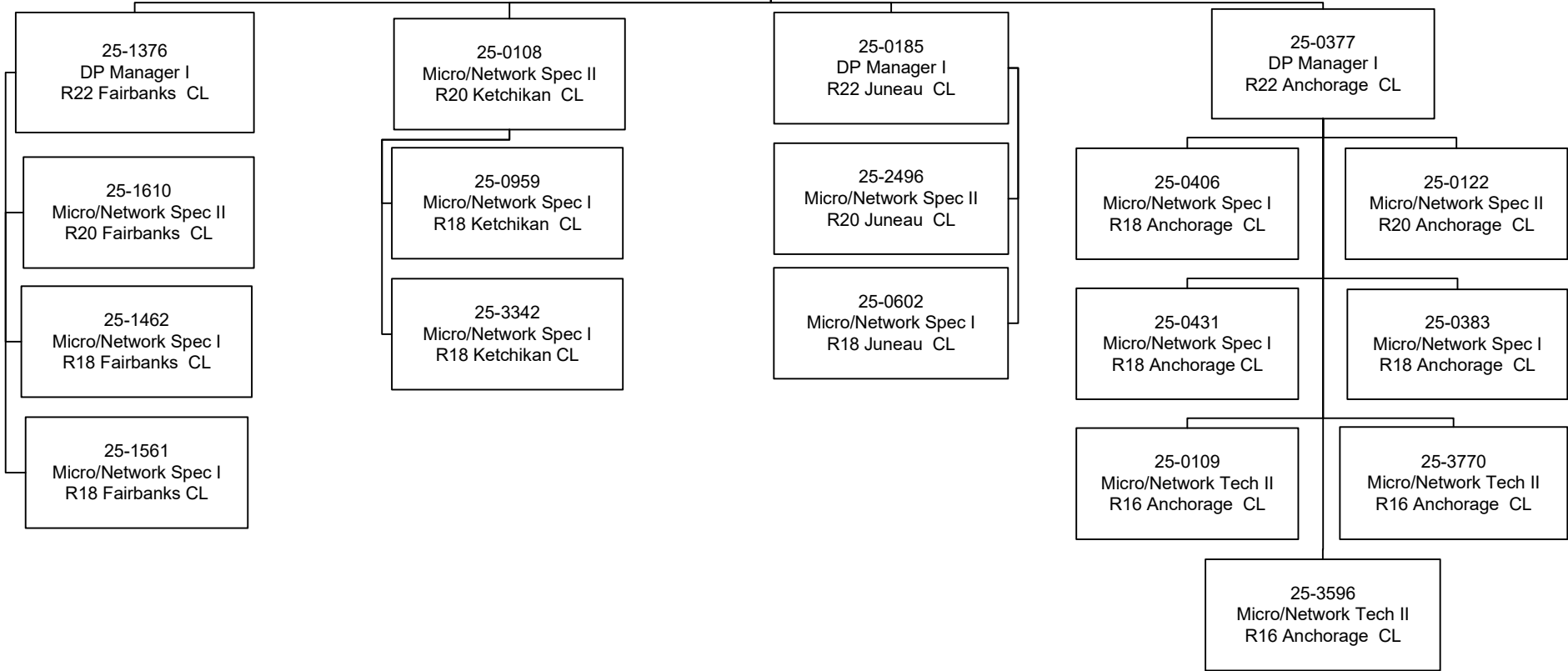


Strategic Partner Services 6

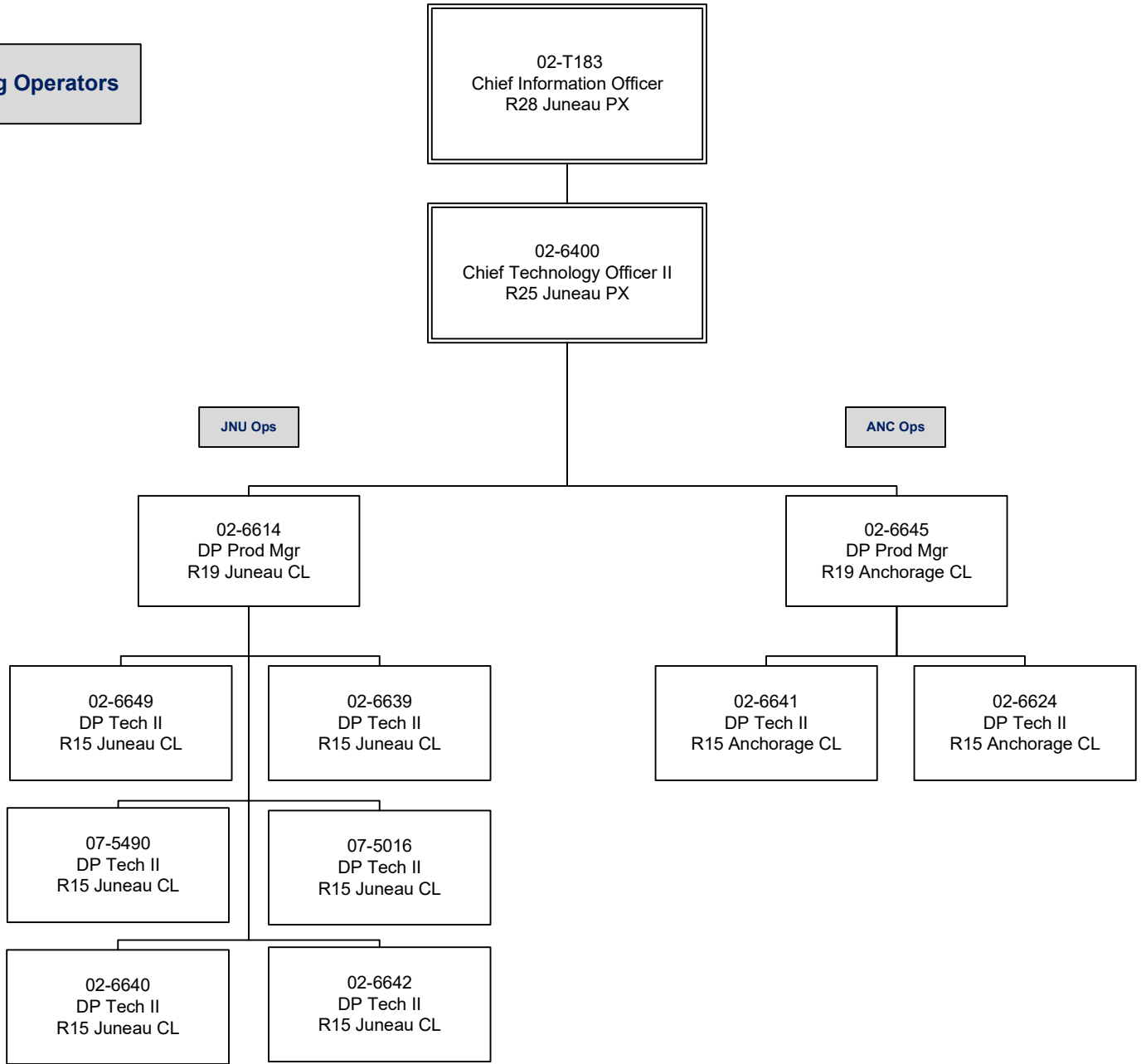
02-T183
Chief Information Officer
R28 Juneau PX

02-6301
Chief Technology Officer I
R24 Anchorage PX

25-3738
DP Manager II
R23 Juneau CL



24/7 Monitoring Operators



Platform Services

02-T183
Chief Information Officer
R28 Juneau PX

02-6400
Chief Technology Officer II
R25 Juneau PX

02-6601
DP Manager III
R24 Anchorage CL

End Point – Patch Management

Storage-Back Up

Cloud Infrastructure

Unix-Solaris-Linux

18-7543
DP Manager I
R22 Anchorage CL

06-1944
Systems Programmer II
R22 Anchorage CL

18-7043
Systems Programmer II
R22 Juneau CL

02-6511
Systems Programmer III
R23 Anchorage CL

03-0118
Systems Programmer II
R22 Anchorage CL

04-1024
Systems Programmer II
R22 Juneau CL

02-3114
Systems Programmer II
R22 Juneau CL

04-1149
Micro/Network Spec II
R20 Anchorage CL

02-6304
Systems Programmer II
R22 Anchorage CL

02-6418
Systems Programmer II
R22 Juneau CL

06-1580
Micro/Network Spec II
R20 Anchorage CL

08-1119
Micro/Network Spec II
R20 Juneau CL

09-0303
Micro/Network Spec II
R20 Elmendorf CL

**Platform Services
Database Services**

02-T183
Chief Information Officer
R28 Juneau PX

02-6400
Chief Technology Officer II
R25 Juneau PX

02-6601
DP Manager III
R24 Anchorage CL

02-6621
Database Spec III
R22 Juneau CL

06-3974
Database Spec I
R20 Juneau CL

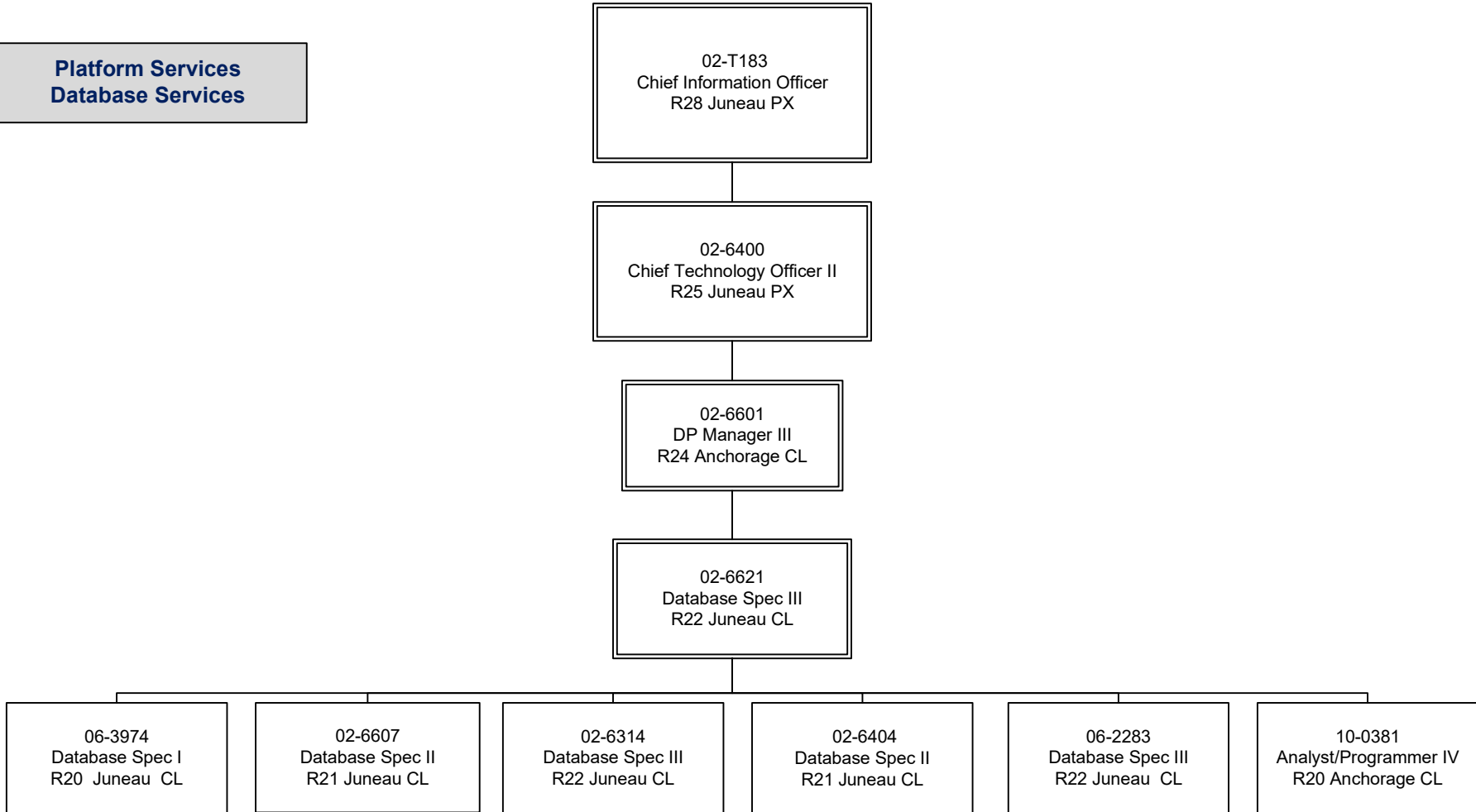
02-6607
Database Spec II
R21 Juneau CL

02-6314
Database Spec III
R22 Juneau CL

02-6404
Database Spec II
R21 Juneau CL

06-2283
Database Spec III
R22 Juneau CL

10-0381
Analyst/Programmer IV
R20 Anchorage CL



**Platform Services
Virtualization**

02-T183
Chief Information Officer
R28 Juneau PX

02-6400
Chief Technology Officer II
R25 Juneau PX

02-6601
DP Manager III
R24 Anchorage CL

03-0027
Systems Programmer III
R23 Anchorage CL

02-3108
Systems Programmer III
R23 Anchorage CL

12-1717
Micro/Network Spec II
R20 Anchorage CL

09-0331
Systems Programmer II
R22 Elmendorf CL

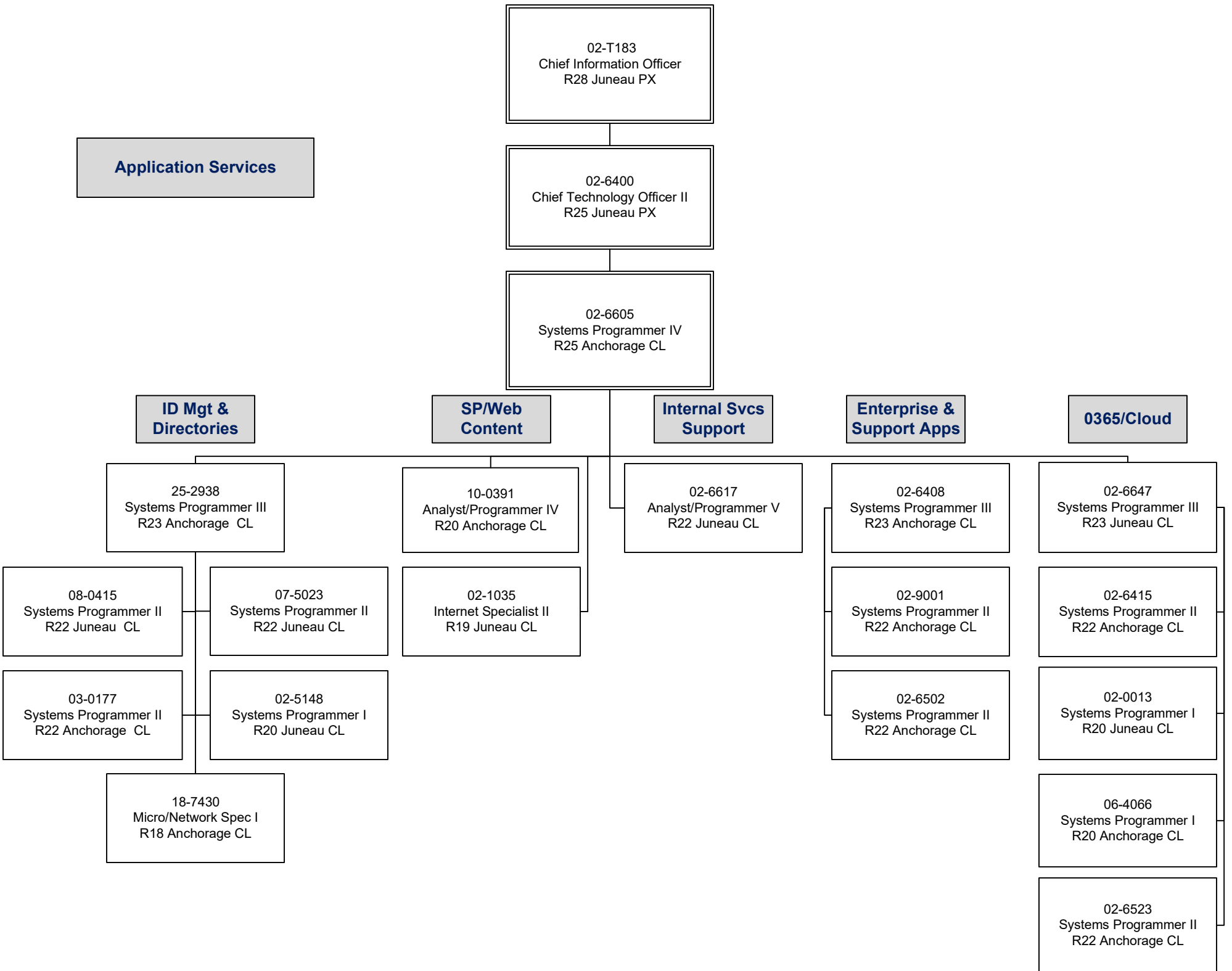
08-1116
Systems Programmer II
R22 Juneau CL

06-8532
Systems Programmer II
R22 Anchorage CL

02-6610
Systems Programmer II
R22 Juneau CL

11-0225
System Programmer I
R20 Juneau CL

11-1972
Systems Programmer II
R22 Juneau CL



Application Services

02-T183
Chief Information Officer
R28 Juneau PX

02-6400
Chief Technology Officer II
R25 Juneau PX

02-6605
Systems Programmer IV
R25 Anchorage CL

ID Mgt & Directories

25-2938
Systems Programmer III
R23 Anchorage CL

08-0415
Systems Programmer II
R22 Juneau CL

07-5023
Systems Programmer II
R22 Juneau CL

03-0177
Systems Programmer II
R22 Anchorage CL

02-5148
Systems Programmer I
R20 Juneau CL

18-7430
Micro/Network Spec I
R18 Anchorage CL

SP/Web Content

10-0391
Analyst/Programmer IV
R20 Anchorage CL

02-1035
Internet Specialist II
R19 Juneau CL

Internal Svcs Support

02-6617
Analyst/Programmer V
R22 Juneau CL

Enterprise & Support Apps

02-6408
Systems Programmer III
R23 Anchorage CL

02-9001
Systems Programmer II
R22 Anchorage CL

02-6502
Systems Programmer II
R22 Anchorage CL

0365/Cloud

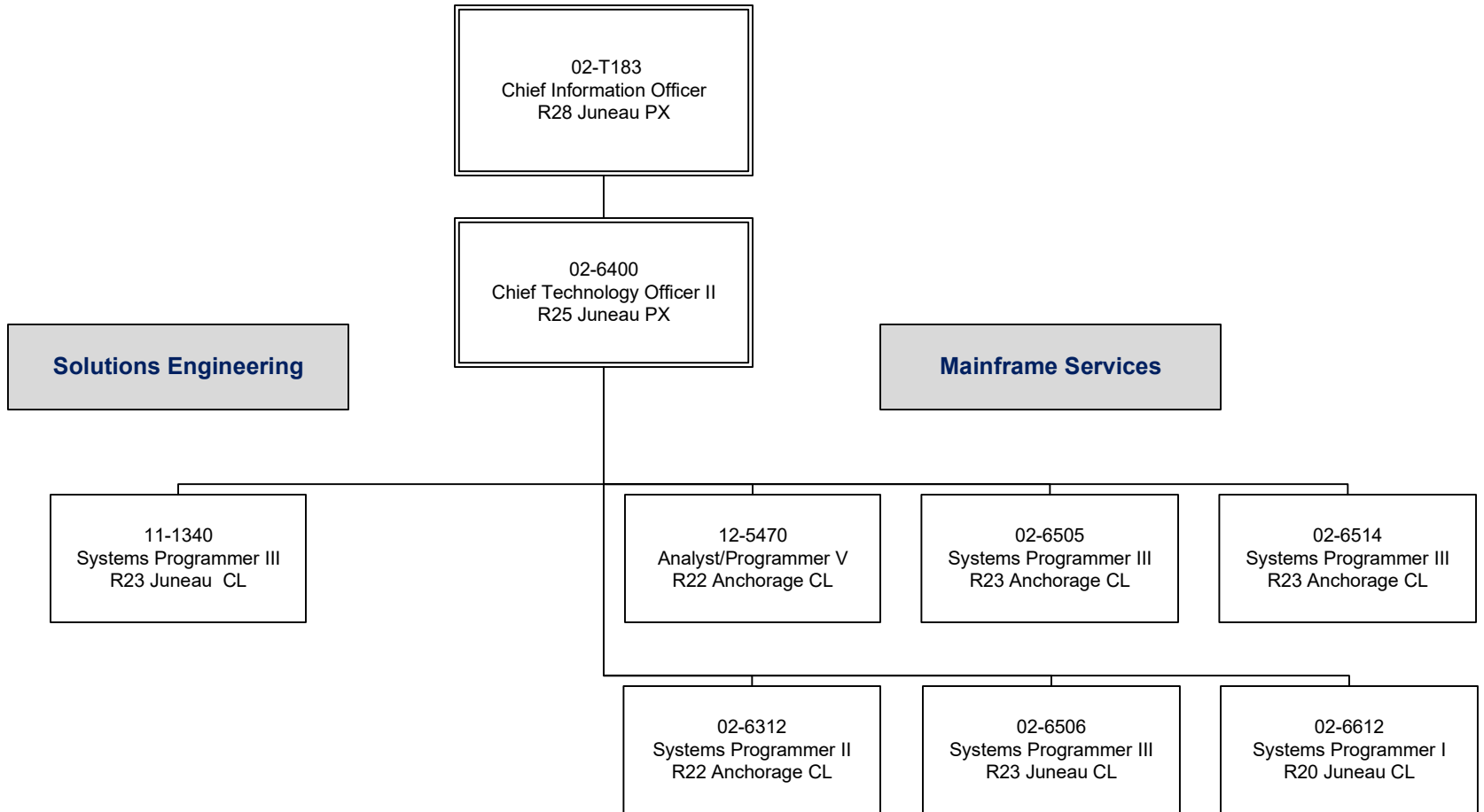
02-6647
Systems Programmer III
R23 Juneau CL

02-6415
Systems Programmer II
R22 Anchorage CL

02-0013
Systems Programmer I
R20 Juneau CL

06-4066
Systems Programmer I
R20 Anchorage CL

02-6523
Systems Programmer II
R22 Anchorage CL



Line of Business

02-T183
Chief Information Officer
R28 Juneau PX

02-6300
Deputy Director
R25 Juneau PX

DNR

MVA

DMV

10-0377
Dept Tech Officer II
R24 Anchorage SU

09-0415
Dept Technology Officer I
R23 Anchorage SU

02-3080
Dept Technology Officer III
R25 Juneau SU

10-0348
Analyst/Programmer V
R22 Anchorage SU

10-0392
Analyst/Programmer V
R22 Anchorage GGU

10-0352
DP Manager I
R22 Anchorage SU

09-0409
Internet Specialist II
R19 Elmendorf GGU

12-5452
DP Manager I
R22 Anchorage SU

10-0289
Analyst/Programmer IV
R20 Anchorage GGU

10-0347
Analyst/Programmer IV
R20 Anchorage GGU

10-3105
Analyst/Programmer I
R14 Anchorage GGU

12-5417
Analyst/Programmer V
R22 Fort Myers, FL GGU

10-0346
Analyst/Programmer IV
R20 Anchorage GGU

10-0349
Analyst/Programmer IV
R20 Anchorage GGU

10-0295
Analyst/Programmer IV
R20 Anchorage GGU

12-5232
Analyst/Programmer IV
R20 Anchorage GGU

10-0403
Analyst/Programmer IV
R20 Anchorage GGU

10-0379
Analyst/Programmer III
R18 Anchorage GGU

12-4701
Analyst/Programmer IV
R20 Anchorage GGU

02-9514
Analyst/Programmer III
R18 Anchorage GGU

Telecommunications/Network

02-T183
Chief Information Officer
R28 Juneau PX

07-5080
Chief Technology Officer II
R25 Juneau PX

02-6401
DP Manager III
R24 Anchorage CL

02-3120
DP Manager I
R22 Anchorage CL

02-6510
DC Spec I
R19 Fairbanks CL

08-2072
DP Manager I
R22 Anchorage CL

02-3111
Micro/Network Spec II
R20 Fairbanks CL

02-6507
DP Manager I
R22 Juneau CL

02-6518
DC Spec II
R21 Anchorage CL

02-3109
DC Spec II
R21 Anchorage CL

02-6524
DC Spec II
R21 Anchorage CL

02-6522
DC Spec II
R21 Juneau CL

02-6508
DC Spec II
R21 Juneau CL

12-4412
DC Spec II
R21 Anchorage CL

20-6858
Micro/Network Spec II
R20 Anchorage CL

02-3112
Micro/Network Spec II
R20 Juneau CL

08-0424
Micro/Network Spec II
R20 Anchorage CL

02-6509
DC Spec I
R19 Anchorage CL

20-2055
Micro/Network Spec I
R18 Anchorage CL

12-1671
Micro/Network Spec I
R18 Anchorage CL

09-0221
Micro/Network Spec I
R18 Elmendorf CL

SATS/ALMR

02-T183
Chief Information Officer
R28 Juneau PX

07-5080
Chief Technology Officer II
R25 Juneau PX

02-3002
DP Mgr III
R24 Anchorage CL

02-3003
Program Coord II
R20 Anchorage CL

02-6311
DP Mgr III
R24 Anchorage CL

02-3029
Comm Engr II
R24 Anchorage CL

02-3052
Comm Eng Assoc II
R23 Anchorage CL

02-3060
Comm Eng Assoc II
R23 Anchorage CL

02-3023
Comm Eng Assoc II
R23 Anchorage CL

02-3007
Comm Eng I
R23 Anchorage CL

02-3015
Maint Spec Elec
Journey II
R51 Anchorage CL

02-3027
Maint Spec Elec
Journey II
R51 Anchorage CL

02-3062
Maint Spec Elec
Journey II
R51 Anchorage CL

02-3031
Maint Spec Elec
Journey II
R51 Anchorage CL

02-3050
Maint Spec Elec
Journey II
R51 Juneau CL

02-3017
Maint Spec Elec
Journey II
R51 Soldotna CL

09-0396
Comm Eng Assoc II
R23 Anchorage CL

02-3116
Mnt Gen Journey II
R54 Anchorage CL

02-3053
Maint Spec Elec
Journey II
R51 Anchorage CL

02-3041
Maint Spec Elec
Journey II
R51 Anchorage CL

02-3014
Maint Spec Elec
Journey II
R51 Anchorage CL

02-3040
Maint Spec Elec
Journey II
R51 Fairbanks CL

02-3087
Comm Eng Assoc II
R23 Anchorage CL

02-3119
Mnt Gen Journey II
R54 Anchorage CL

02-3025
Comm Eng Assoc II
R23 Anchorage CL

02-3204
Comm Eng Assoc II
R23 Anchorage CL