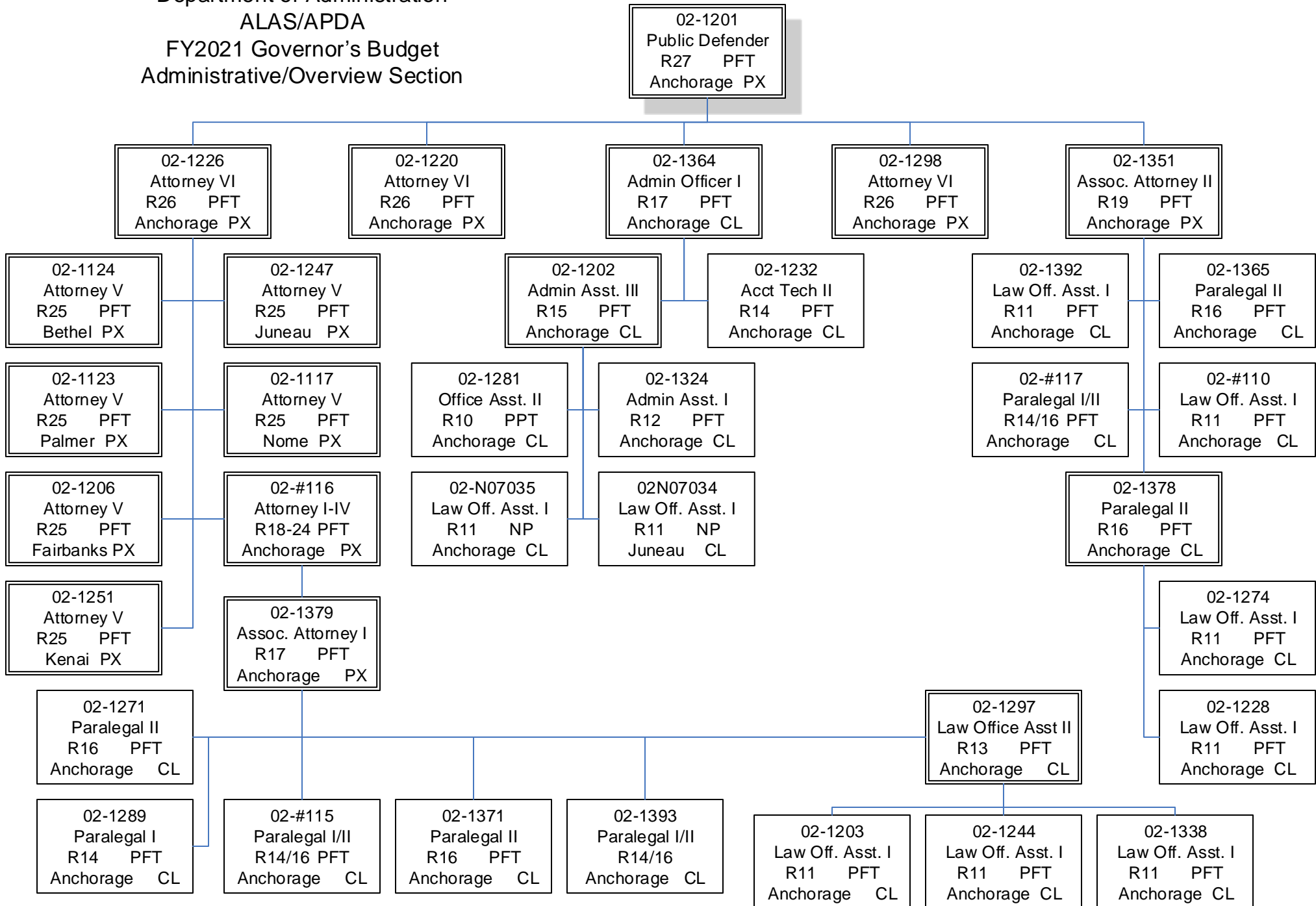
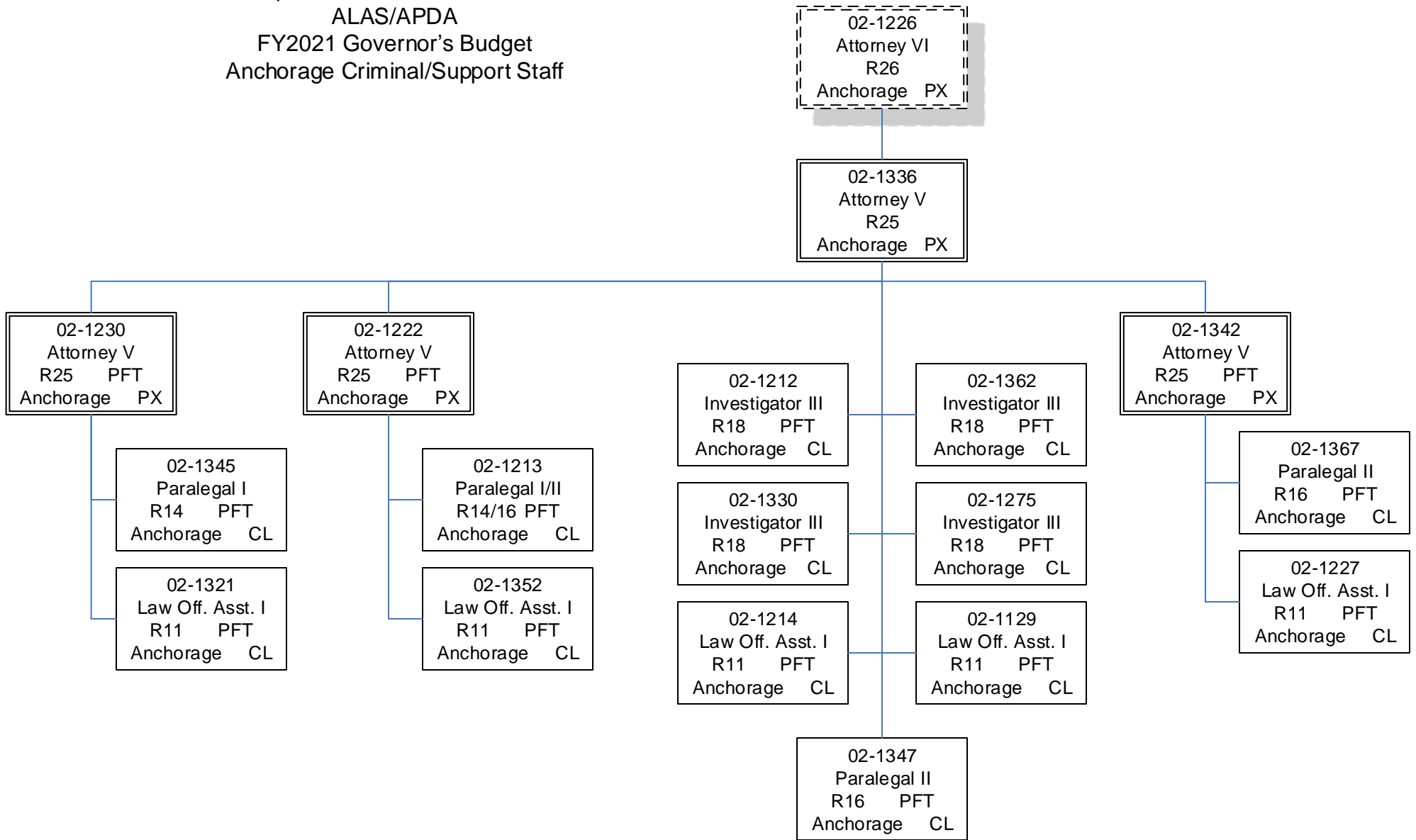


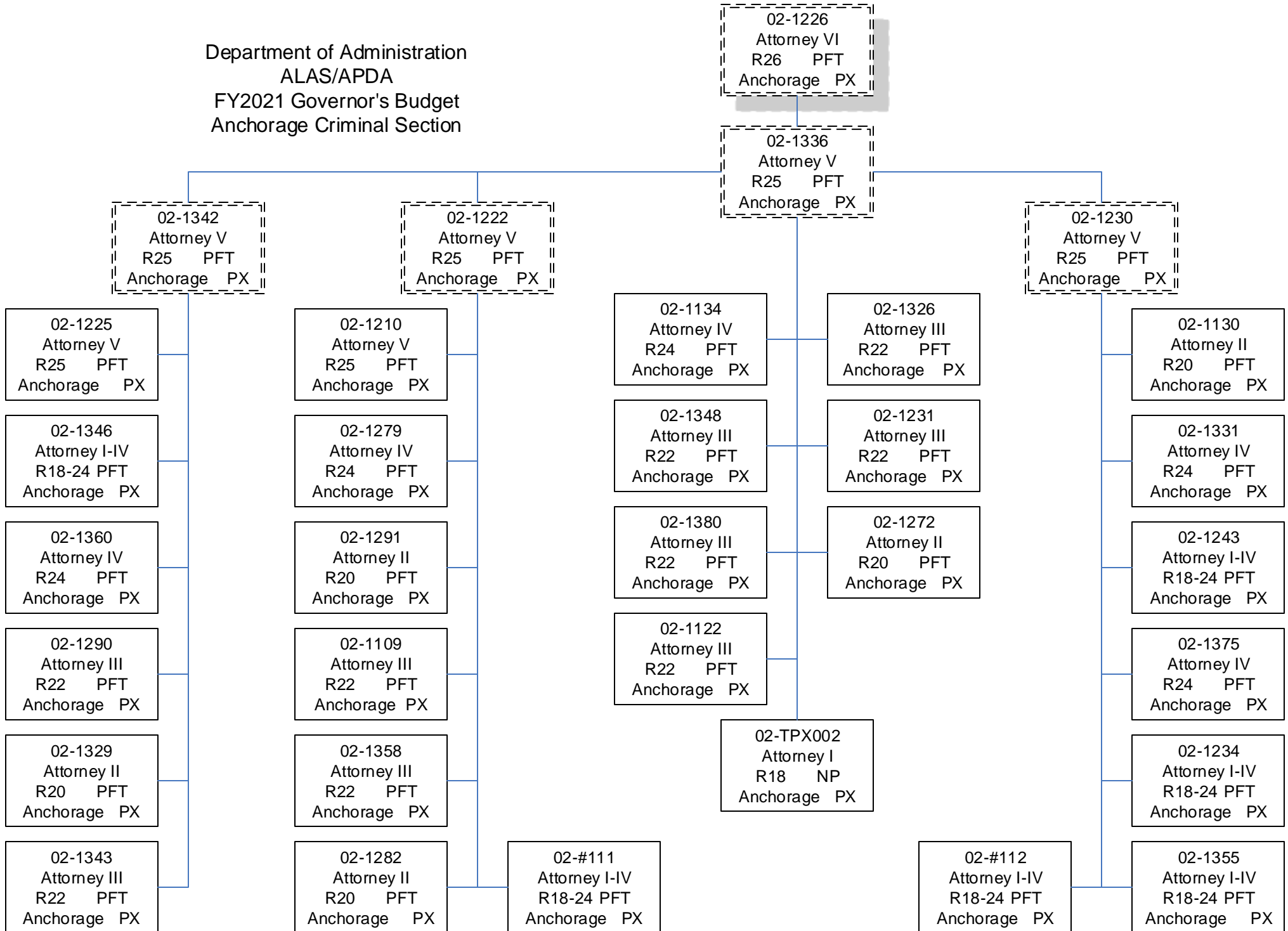
Department of Administration
 ALAS/APDA
 FY2021 Governor's Budget
 Administrative/Overview Section



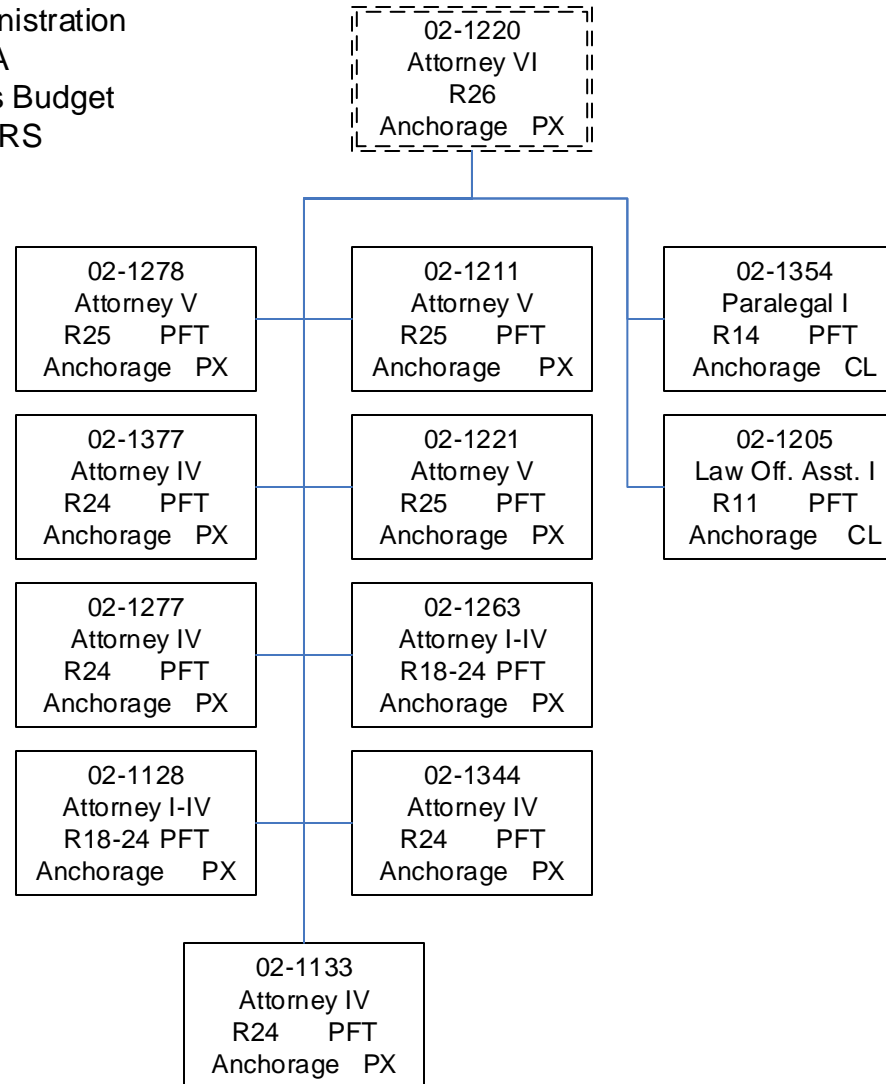
Department of Administration
 ALAS/APDA
 FY2021 Governor's Budget
 Anchorage Criminal/Support Staff



Department of Administration
 ALAS/APDA
 FY2021 Governor's Budget
 Anchorage Criminal Section



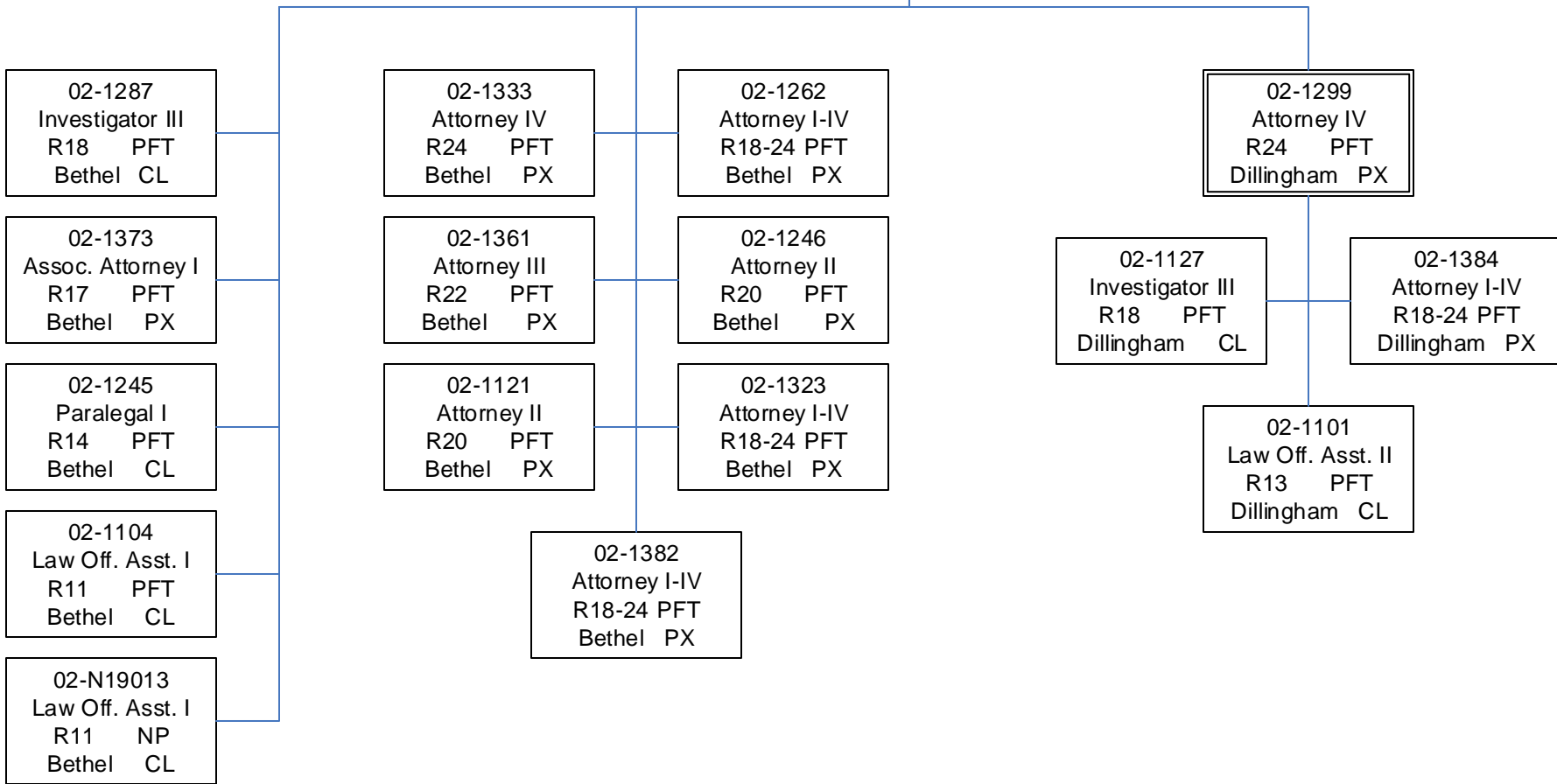
Department of Administration
ALAS/APDA
FY2021 Governor's Budget
Appeals & PCRS



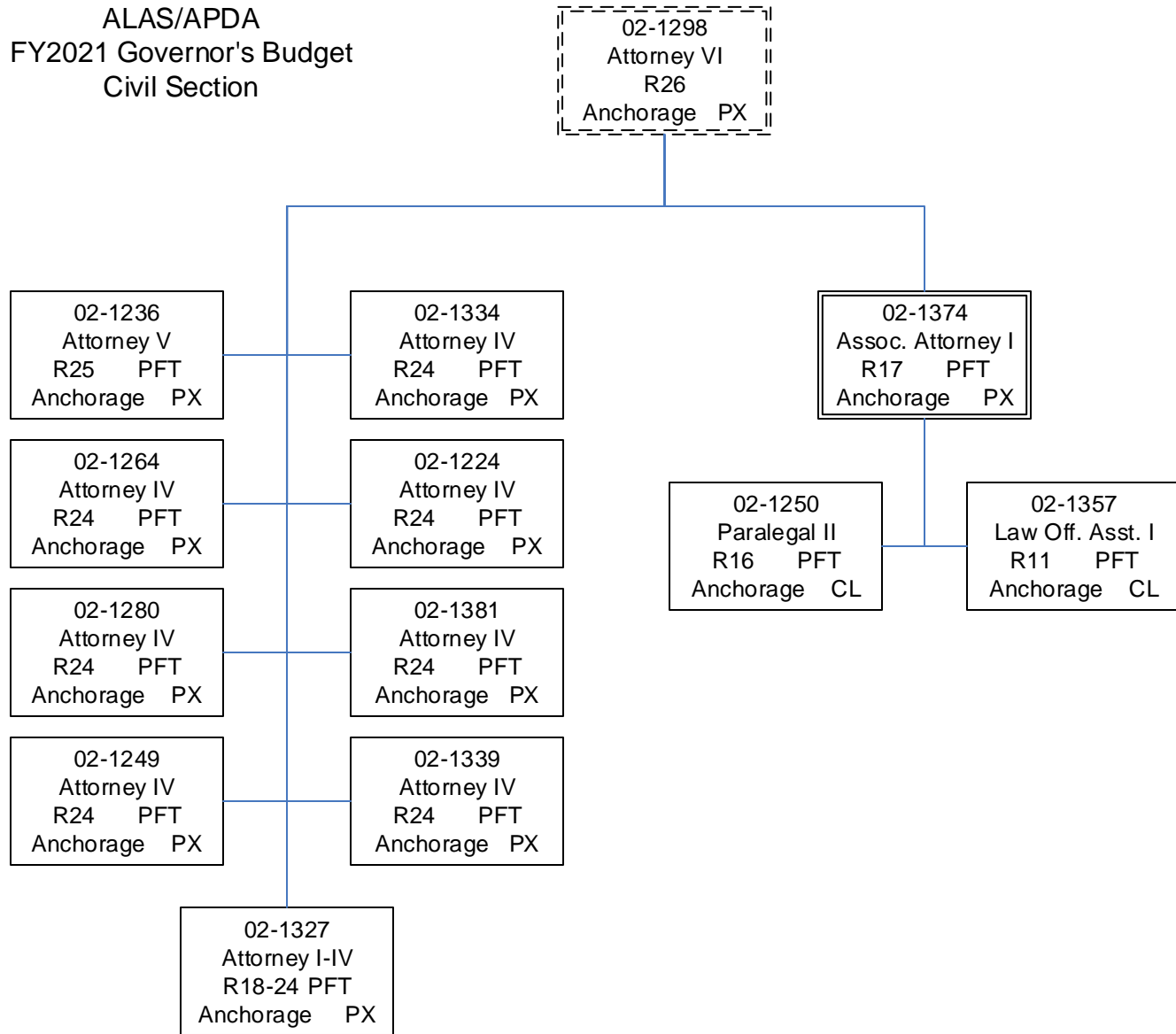
Department of Administration
 ALAS/APDA
 FY2021 Governor's Budget
 Outer-Offices (Bethel & Dillingham)

02-1226
 Attorney VI
 R26 PFT
 Anchorage PX

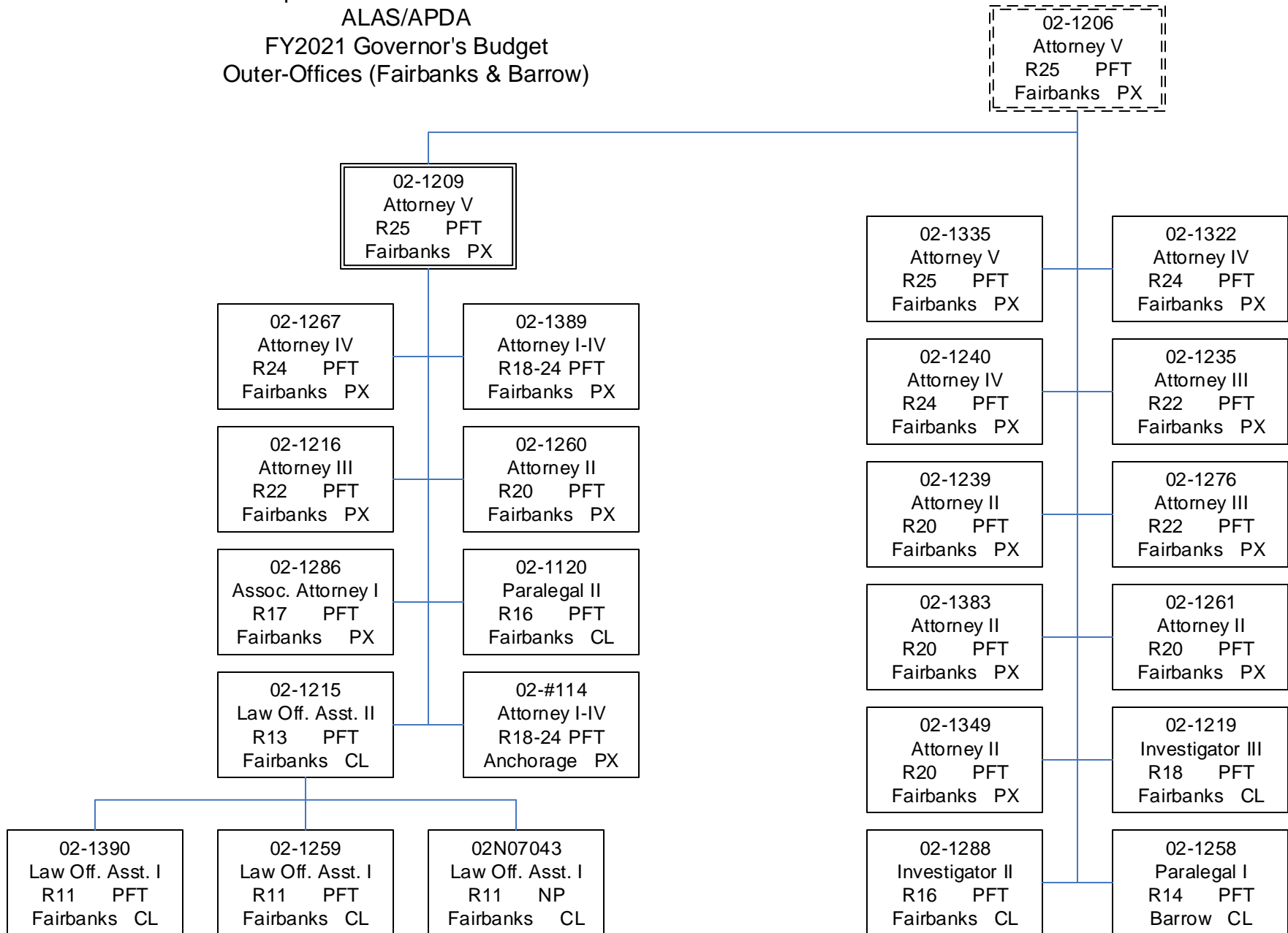
02-1124
 Attorney V
 R25 PFT
 Bethel PX



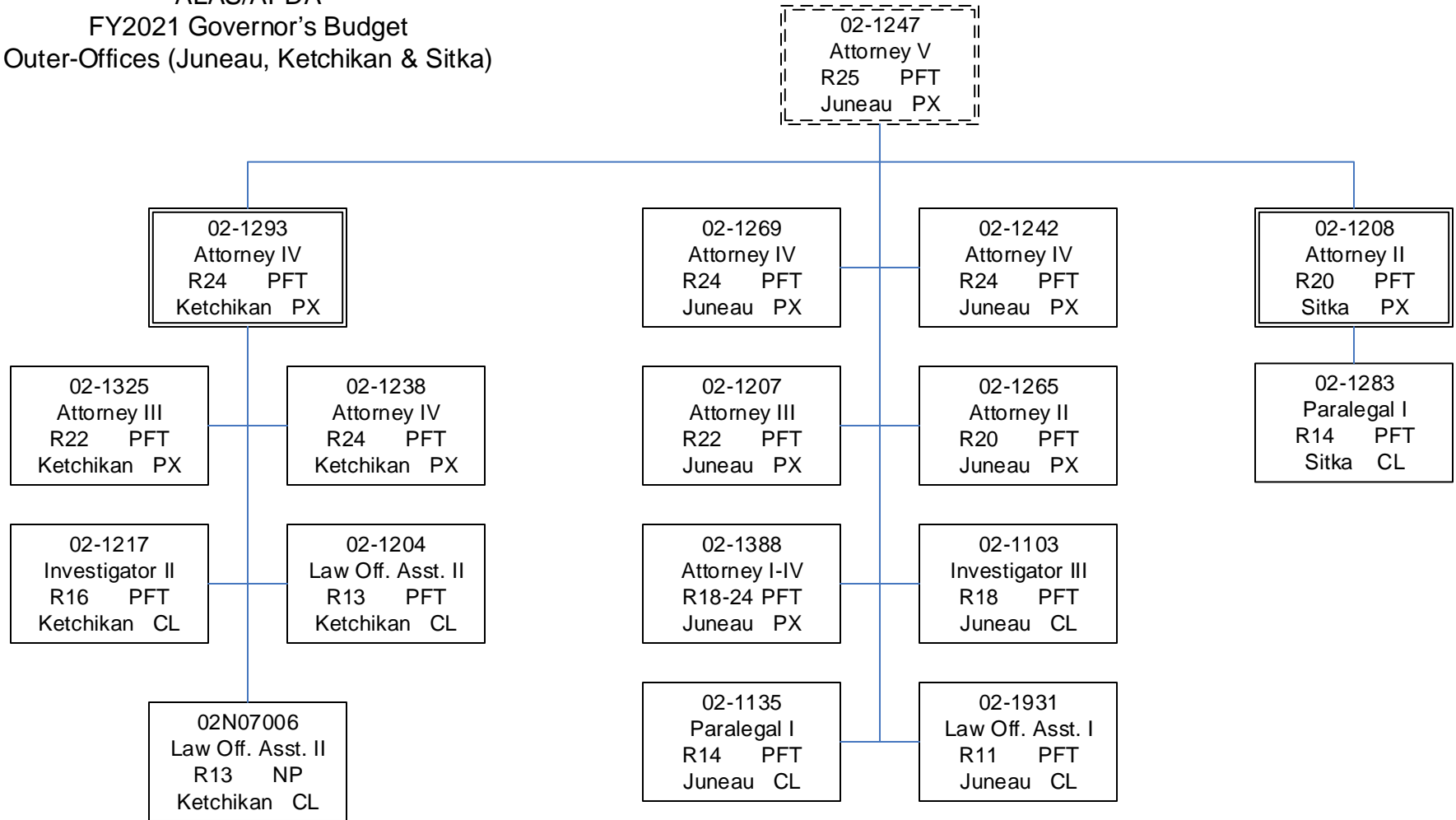
Department of Administration
ALAS/APDA
FY2021 Governor's Budget
Civil Section



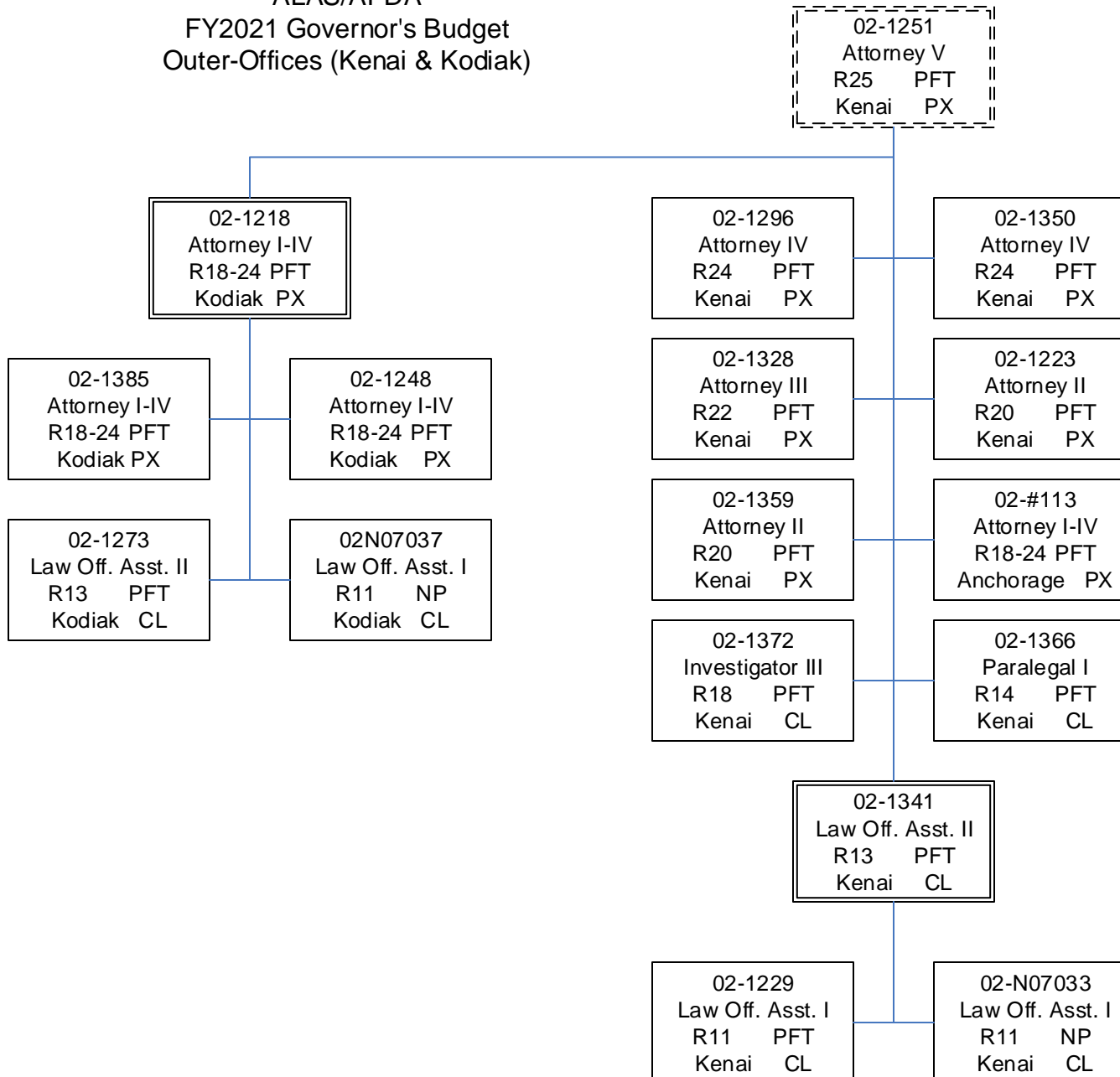
Department of Administration
 ALAS/APDA
 FY2021 Governor's Budget
 Outer-Offices (Fairbanks & Barrow)



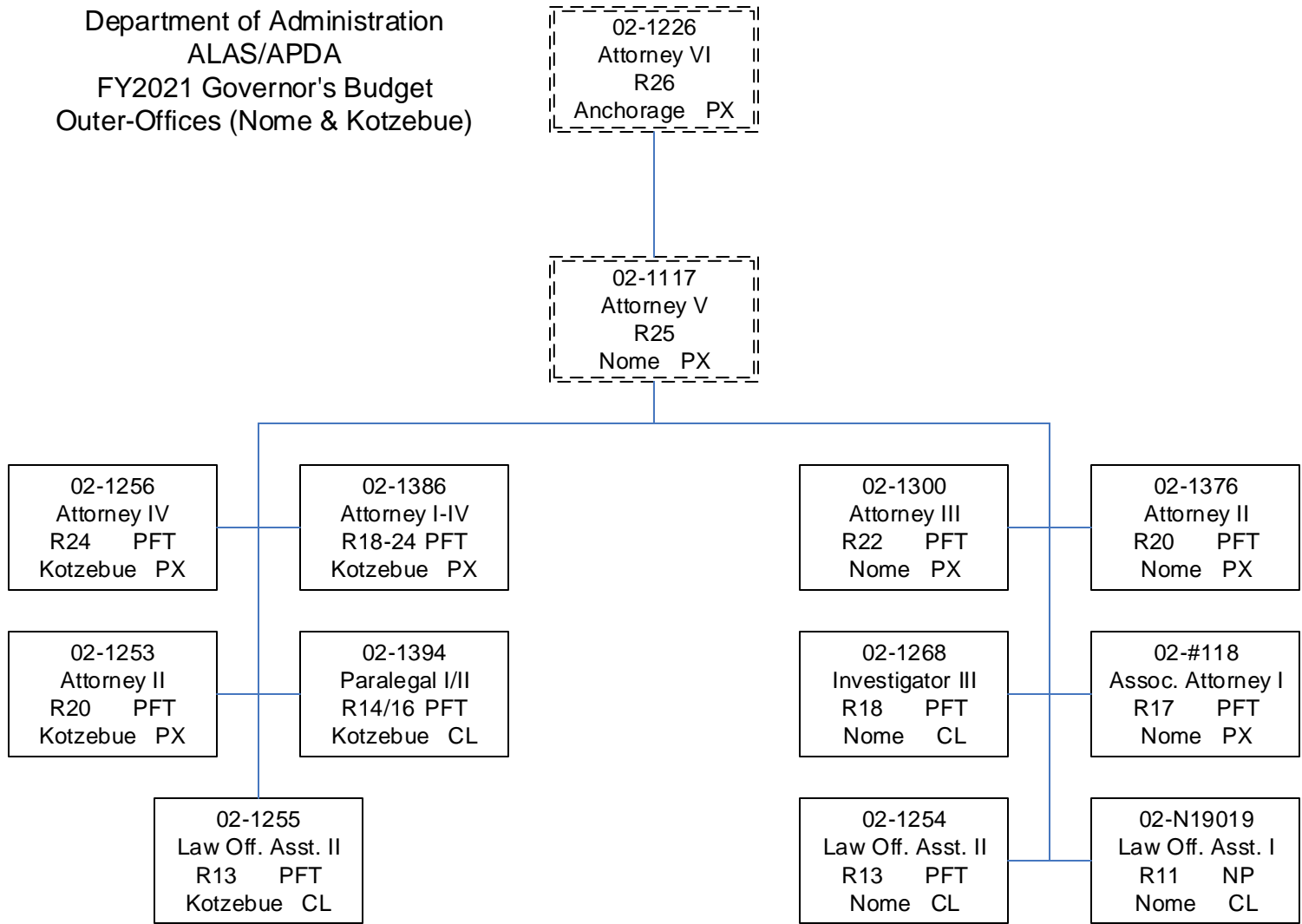
Department of Administration
 ALAS/APDA
 FY2021 Governor's Budget
 Outer-Offices (Juneau, Ketchikan & Sitka)



Department of Administration
 ALAS/APDA
 FY2021 Governor's Budget
 Outer-Offices (Kenai & Kodiak)



Department of Administration
 ALAS/APDA
 FY2021 Governor's Budget
 Outer-Offices (Nome & Kotzebue)



Department of Administration
 ALAS/APDA
 FY2021 Governor's Budget
 Outer-Offices (Palmer)

