

**State of Alaska**  
**FY2021 Governor's Operating Budget**

**Department of Education and Early Development**  
**School Finance & Facilities**  
**Component Budget Summary**

**Component: School Finance & Facilities**

**Contribution to Department's Mission**

To allocate and account for resources distributed to Alaska school districts and Mt. Edgecumbe High School and provide services that promote safe facilities which support quality education programs.

**Major Component Accomplishments in 2019**

- Provided timely, accurate payments to school districts through K-12 Support formula programs;
- Provided training to school districts, finance officers, and facility managers;
- Completed analysis and review of school district operating fund budgets and annual audited financial statements for compliance with statutes and regulations; and
- Completed annual Capital Improvement Project (CIP) prioritized list in accordance with statute and regulation.

**Key Component Challenges**

- Providing technical assistance to school districts with varying size, locations, and complexities;
- Continuing to review and update department publications so the publications represent current standards;
- Continuing to review the annual ranking process for capital project and bond reimbursement payment streams; and
- Providing assistance and training to school districts on the new Per Pupil Expenditure by School requirement in the Every Student Succeeds Act (ESSA).

**Significant Changes in Results to be Delivered in FY2021**

There are no significant changes in results to be delivered in FY2021.

**Statutory and Regulatory Authority**

AS 14.03.140 – 150	AS 14.50
AS 14.07.010-030	AS 37.15.011
AS 14.07.060	AS 43.50.140
AS 14.08.111	4 AAC 09
AS 14.08.151	4 AAC 27
AS 14.09	4 AAC 31
AS 14.11	4 AAC 33
AS 14.14.050-065	4 AAC 40
AS 14.14.090	4 AAC 52.700
AS 14.17	

**Contact Information**

**Contact:** Heidi Teshner, Division Director  
**Phone:** (907) 465-2875  
**E-mail:** heidi.teshner@alaska.gov

School Finance & Facilities Personal Services Information				
Authorized Positions			Personal Services Costs	
	<u>FY2020</u> <u>Management</u> <u>Plan</u>	<u>FY2021</u> <u>Governor</u>		
Full-time	11	11	Annual Salaries	1,029,933
Part-time	0	0	COLA	9,199
Nonpermanent	0	0	Premium Pay	0
			Annual Benefits	550,615
			<i>Less 0.00% Vacancy Factor</i>	(0)
			Lump Sum Premium Pay	0
<b>Totals</b>	<b>11</b>	<b>11</b>	<b>Total Personal Services</b>	<b>1,589,747</b>

Position Classification Summary					
Job Class Title	Anchorage	Fairbanks	Juneau	Others	Total
Architectural Assistant	0	0	1	0	1
Audit & Review Analyst II	0	0	1	0	1
Building Management Specialist	0	0	1	0	1
Division Director - Px	0	0	1	0	1
School Finance Manager	0	0	1	0	1
School Finance Specialist II	0	0	5	0	5
Tech Eng/Arch I	0	0	1	0	1
<b>Totals</b>	<b>0</b>	<b>0</b>	<b>11</b>	<b>0</b>	<b>11</b>

**Component Detail All Funds**  
**Department of Education and Early Development**

**Component:** School Finance & Facilities (2737)

Non-Formula Component

**RDU:** Education Support and Administrative Services (677)

	FY2019 Actuals	FY2020 Conference Committee	FY2020 Authorized	FY2020 Management Plan	FY2021 Governor	FY2020 Management Plan vs FY2021 Governor	
71000 Personal Services	1,370.1	1,422.3	1,422.3	1,554.3	1,589.7	35.4	2.3%
72000 Travel	29.8	24.6	11.4	72.6	72.6	0.0	0.0%
73000 Services	933.0	832.8	832.8	842.8	809.6	-33.2	-3.9%
74000 Commodities	1.4	6.0	6.0	6.0	6.0	0.0	0.0%
75000 Capital Outlay	0.0	6.0	6.0	6.0	6.0	0.0	0.0%
77000 Grants, Benefits	0.0	0.0	0.0	0.0	0.0	0.0	0.0%
78000 Miscellaneous	0.0	0.0	0.0	0.0	0.0	0.0	0.0%
<b>Totals</b>	<b>2,334.3</b>	<b>2,291.7</b>	<b>2,278.5</b>	<b>2,481.7</b>	<b>2,483.9</b>	<b>2.2</b>	<b>0.1%</b>
<b>Fund Sources:</b>							
1004 Gen Fund (UGF)	1,425.0	1,359.8	1,355.6	1,558.8	1,555.6	-3.2	-0.2%
1007 I/A Rcpts (Other)	909.3	931.9	922.9	922.9	928.3	5.4	0.6%
<b>Unrestricted General (UGF)</b>	<b>1,425.0</b>	<b>1,359.8</b>	<b>1,355.6</b>	<b>1,558.8</b>	<b>1,555.6</b>	<b>-3.2</b>	<b>-0.2%</b>
<b>Designated General (DGF)</b>	<b>0.0</b>	<b>0.0</b>	<b>0.0</b>	<b>0.0</b>	<b>0.0</b>	<b>0.0</b>	<b>0.0%</b>
<b>Other Funds</b>	<b>909.3</b>	<b>931.9</b>	<b>922.9</b>	<b>922.9</b>	<b>928.3</b>	<b>5.4</b>	<b>0.6%</b>
<b>Federal Funds</b>	<b>0.0</b>	<b>0.0</b>	<b>0.0</b>	<b>0.0</b>	<b>0.0</b>	<b>0.0</b>	<b>0.0%</b>
<b>Positions:</b>							
Permanent Full Time	10	10	10	11	11	0	0.0%
Permanent Part Time	0	0	0	0	0	0	0.0%
Non Permanent	0	0	0	0	0	0	0.0%

**Change Record Detail - Multiple Scenarios with Descriptions**  
**Department of Education and Early Development**

**Component:** School Finance & Facilities (2737)  
**RDU:** Education Support and Administrative Services (677)

Scenario/Change Record Title	Trans Type	Totals	Personal Services	Travel	Services	Commodities	Capital Outlay	Grants, Benefits	Miscellaneous	Positions		NP
										PFT	PPT	
<b>***** Changes From FY2020 Conference Committee To FY2020 Authorized *****</b>												
<b>FY2020 Conference Committee</b>												
	ConfCom	2,291.7	1,422.3	24.6	832.8	6.0	6.0	0.0	0.0	10	0	0
1004 Gen Fund		1,359.8										
1007 I/A Rcpts		931.9										
<b>Executive Branch 50% Travel Reduction</b>												
	Veto	-13.2	0.0	-13.2	0.0	0.0	0.0	0.0	0.0	0	0	0
1004 Gen Fund		-4.2										
1007 I/A Rcpts		-9.0										
State agency travel budgets, not covered under the exemptions of public safety, health, and disaster management, were reduced 50% in the Governor's FY2020 budget. Veto action removes legislative increases to state travel. Agencies will rely on technology and management efficiencies to reduce the amount of state employee travel.												
The State's fiscal reality dictates a reduction in expenditures across all agencies.												
<b>Subtotal</b>		<b>2,278.5</b>	<b>1,422.3</b>	<b>11.4</b>	<b>832.8</b>	<b>6.0</b>	<b>6.0</b>	<b>0.0</b>	<b>0.0</b>	<b>10</b>	<b>0</b>	<b>0</b>
<b>***** Changes From FY2020 Authorized To FY2020 Management Plan *****</b>												
<b>Transfer Division Director (05-1003) from Student and School Achievement Due to Reorganization</b>												
	Trin	203.2	203.2	0.0	0.0	0.0	0.0	0.0	0.0	1	0	0
1004 Gen Fund		203.2										
Transfer a full-time Division Director (05-1003), range 27, located in Juneau, from Student and School Achievement to School Finance and Facilities to oversee the Division of Finance and Support Services.												
<b>Align Authority with Anticipated Expenditures</b>												
	LIT	0.0	-71.2	61.2	10.0	0.0	0.0	0.0	0.0	0	0	0
Transfer authority from personal services to cover anticipated travel and services costs. The remaining personal services authority is sufficient to cover anticipated expenditures.												
<b>Subtotal</b>		<b>2,481.7</b>	<b>1,554.3</b>	<b>72.6</b>	<b>842.8</b>	<b>6.0</b>	<b>6.0</b>	<b>0.0</b>	<b>0.0</b>	<b>11</b>	<b>0</b>	<b>0</b>
<b>***** Changes From FY2020 Management Plan To FY2021 Governor *****</b>												
<b>Reduce REAA &amp; Small Muni School District Fund Ch79 SLA2018 (HB212) (Sec2 Ch17 SLA2018 P42 L16 (HB286))</b>												
	FNOTI	-9.0	0.0	0.0	-9.0	0.0	0.0	0.0	0.0	0	0	0
1004 Gen Fund		-9.0										
Reduce authority to align with anticipated costs associated with House Bill 212 (HB212) Reduce REAA & Small Muni School District Fund Ch79 SLA2018. HB212												

**Change Record Detail - Multiple Scenarios with Descriptions**  
**Department of Education and Early Development**

**Component:** School Finance & Facilities (2737)  
**RDU:** Education Support and Administrative Services (677)

Scenario/Change Record Title	Trans Type	Totals	Personal Services	Travel	Services	Commodities	Capital Outlay	Grants, Benefits	Miscellaneous	Positions		NP
										PFT	PPT	
requires the Department of Education and Early Development (DEED) to encourage, evaluate, and require the use of previous school designed and building systems when it will result in an operational or capital cost savings; and for DEED to develop and periodically update regional school model school standards, costs, and design ratios that achieve efficient and cost-effective school construction. Ongoing annual costs associated with HB212 are lower than costs in the first two years since enactment.												
<b>FY2021 Salary and Health Insurance Increases</b>												
	SalAdj	11.2	11.2	0.0	0.0	0.0	0.0	0.0	0.0	0	0	0
1004 Gen Fund		5.8										
1007 I/A Rcpts		5.4										
FY2021 GGU Salary Increases: \$9.0												
FY2021 increase to GGU Health Insurance from \$1530 to \$1555 per member per month: \$2.2												
<b>Align Authority with Anticipated Expenditures</b>												
	LIT	0.0	24.2	0.0	-24.2	0.0	0.0	0.0	0.0	0	0	0
Transfer authority from services to cover anticipated personal services costs. The remaining services authority is sufficient to cover anticipated expenditures.												
<b>Totals</b>		<b>2,483.9</b>	<b>1,589.7</b>	<b>72.6</b>	<b>809.6</b>	<b>6.0</b>	<b>6.0</b>	<b>0.0</b>	<b>0.0</b>	<b>11</b>	<b>0</b>	<b>0</b>

**Line Item Detail (1676)**  
**Department of Education and Early Development**  
**Travel**

**Component:** School Finance & Facilities (2737)

Line Number	Line Name		FY2019 Actuals	FY2020 Management Plan	FY2021 Governor
2000	Travel		29.8	72.6	72.6
Object Class	Servicing Agency	Explanation	FY2019 Actuals	FY2020 Management Plan	FY2021 Governor
<b>2000 Travel Detail Totals</b>			<b>29.8</b>	<b>72.6</b>	<b>72.6</b>
2000	In-State Employee Travel	In-State Transportation - Transportation costs for travel relating to administration, conventions and meetings, boards and commissions.	22.7	61.3	61.3
2001	In-State Non-Employee Travel	In-State Transportation - Transportation costs for State Board of Education members and non-employees traveling on state business.	5.7	4.0	4.0
2002	Out of State Employee Travel	Out-of-State Transportation - Transportation costs for travel relating to administration, conventions and meetings, boards and commissions.	1.4	7.3	7.3

**Line Item Detail (1676)**  
**Department of Education and Early Development**  
**Services**

**Component:** School Finance & Facilities (2737)

Line Number	Line Name		FY2019 Actuals	FY2020 Management Plan	FY2021 Governor
3000	Services		933.0	842.8	809.6
Object Class	Servicing Agency	Explanation	FY2019 Actuals	FY2020 Management Plan	FY2021 Governor
<b>3000 Services Detail Totals</b>			<b>933.0</b>	<b>842.8</b>	<b>809.6</b>
3000	Education Services	Training, educational conferences, agency memberships, books and fees for work-related courses.	7.3	3.0	5.0
3001	Financial Services	Accounting, auditing, management/consulting services.	194.5	111.0	85.5
3004	Telecommunications	Local, long distance, cellular and telecommunications equipment charges; data/network, and television.	1.3	1.5	1.5
3009	Structure/Infrastructure/Land	Pupil Transportation contractual obligations to provide semi-annual safety school bus inspections per AS 14.09.030.	325.9	330.0	330.0
3010	Equipment/Machinery	Machinery, furniture and equipment purchase, repairs, maintenance, rentals, and leases.	9.8	10.0	5.0
3011	Other Services	Other services, including strategic planning services, State Travel Office fees, and printer/copy machine supplies and maintenance.	0.3	1.0	2.8
3017	Inter-Agency Information Technology Non-Telecommunications	Admin - Department-wide Office of Information Technology chargeback for computer services (including Enterprise Productivity Rates and MICS charges for mainframe usage).	26.2	27.0	27.0
3018	Inter-Agency Information Technology Telecommunications	Admin - Department-wide Office of Information Technology chargeback for telecommunications, Enterprise Productivity Rates, phone	3.8	4.0	4.0



**Line Item Detail (1676)**  
**Department of Education and Early Development**  
**Services**

**Component:** School Finance & Facilities (2737)

Object Class		Servicing Agency	Explanation	FY2019 Actuals	FY2020 Management Plan	FY2021 Governor
<b>3000 Services Detail Totals</b>				<b>933.0</b>	<b>842.8</b>	<b>809.6</b>
			lines, and service requests.			
3021	Inter-Agency Mail	Admin - Department-wide	Pro-rated share of expenses relating to central mailroom support and services.	1.4	2.0	1.5
3022	Inter-Agency Human Resources	Admin - Department-wide	Division of Personnel and Labor Relations - Human resource and personnel services.	30.6	40.0	35.0
3024	Inter-Agency Legal	Law - Department-wide	Department of Law legal services and regulations review.	148.1	120.0	120.0
3027	Inter-Agency Financial	Admin - Department-wide	Division of Finance - Computer services for State accounting (IRIS), payroll (HRM), and reporting (ALDER) systems.	40.2	40.0	40.0
3038	Inter-Agency Management/Consulting	Labor - Department-wide	AVTEC - School Bus Driver Instructor Certification & Recertification Workshops.	11.6	21.0	20.0
3038	Inter-Agency Management/Consulting	E&ED - Administrative Services (157)	Administrative Services support to include, but not limited to: accounting; internal audit; budget preparation and management; federal and state financial reporting; procurement; human resources; and travel.	106.7	107.0	107.0
3038	Inter-Agency Management/Consulting	E&ED - Information Services (2148)	Information Services support for centralized information technology services to include, but not limited to: database; network and server support; website maintenance; computer and data security; computer and computer periphery support; and maintenance agreements.	25.3	25.3	25.3

**Line Item Detail (1676)**  
**Department of Education and Early Development**  
**Commodities**

**Component:** School Finance & Facilities (2737)

Line Number	Line Name		FY2019 Actuals	FY2020 Management Plan	FY2021 Governor
4000	Commodities		1.4	6.0	6.0
Object Class	Servicing Agency	Explanation	FY2019 Actuals	FY2020 Management Plan	FY2021 Governor
		<b>4000 Commodities Detail Totals</b>	<b>1.4</b>	<b>6.0</b>	<b>6.0</b>
4000	Business	Business supplies including books and educational equipment and furniture; office supplies; desktop computers, printers and IT equipment less than \$5,000 per item; and subscriptions including electronic access to information.	1.4	6.0	6.0

**Line Item Detail (1676)**  
**Department of Education and Early Development**  
**Capital Outlay**

**Component:** School Finance & Facilities (2737)

Line Number	Line Name		FY2019 Actuals	FY2020 Management Plan	FY2021 Governor
5000	Capital Outlay		0.0	6.0	6.0
Object Class	Servicing Agency	Explanation	FY2019 Actuals	FY2020 Management Plan	FY2021 Governor
<b>5000 Capital Outlay Detail Totals</b>			<b>0.0</b>	<b>6.0</b>	<b>6.0</b>
5004	Equipment	Equipment and furniture.	0.0	6.0	6.0

**Revenue Detail (1681)**  
**Department of Education and Early Development**

**Component:** School Finance & Facilities (2737)

Revenue Type (OMB Fund Code) Revenue Source	Component	Comment	FY2019 Actuals	FY2020 Management Plan	FY2021 Governor
<b>5007 I/A Rcpts (1007 I/A Rcpts)</b>			<b>909.3</b>	<b>922.9</b>	<b>928.3</b>
5301 Inter-Agency Receipts	Rev - Department-wide	Inter-Agency Receipts from the School Debt Reimbursement program for contractual, travel, personnel, and other operational costs for the School Finance and Facilities component.	909.3	922.9	928.3

**Inter-Agency Services (1682)**  
**Department of Education and Early Development**

**Component:** School Finance & Facilities (2737)

				FY2019 Actuals	FY2020 Management Plan	FY2021 Governor
<b>Component Totals</b>				<b>393.9</b>	<b>386.3</b>	<b>379.8</b>
With Department of Administration				102.2	113.0	107.5
With Department of Law				148.1	120.0	120.0
With Department of Labor and Workforce Development				11.6	21.0	20.0
With Department of Education and Early Development				132.0	132.3	132.3
<b>Object Class</b>	<b>Servicing Agency</b>	<b>Explanation</b>	<b>FY2019 Actuals</b>	<b>FY2020 Management Plan</b>	<b>FY2021 Governor</b>	
3017	Inter-Agency Information Technology Non-Telecommunications	Admin - Department-wide Office of Information Technology chargeback for computer services (including Enterprise Productivity Rates and MICS charges for mainframe usage).	26.2	27.0	27.0	
3018	Inter-Agency Information Technology Telecommunications	Admin - Department-wide Office of Information Technology chargeback for telecommunications, Enterprise Productivity Rates, phone lines, and service requests.	3.8	4.0	4.0	
3021	Inter-Agency Mail	Admin - Department-wide Pro-rated share of expenses relating to central mailroom support and services.	1.4	2.0	1.5	
3022	Inter-Agency Human Resources	Admin - Department-wide Division of Personnel and Labor Relations - Human resource and personnel services.	30.6	40.0	35.0	
3024	Inter-Agency Legal	Law - Department-wide Department of Law legal services and regulations review.	148.1	120.0	120.0	
3027	Inter-Agency Financial	Admin - Department-wide Division of Finance - Computer services for State accounting (IRIS), payroll (HRM), and reporting (ALDER) systems.	40.2	40.0	40.0	
3038	Inter-Agency Management/Consulting	Labor - Department-wide AVTEC - School Bus Driver Instructor Certification & Recertification Workshops.	11.6	21.0	20.0	
3038	Inter-Agency	E&ED - Administrative Services (157) Administrative Services support to	106.7	107.0	107.0	

**Inter-Agency Services (1682)**  
**Department of Education and Early Development**

**Component:** School Finance & Facilities (2737)

<b>Object Class</b>	<b>Servicing Agency</b>	<b>Explanation</b>	<b>FY2019 Actuals</b>	<b>FY2020 Management Plan</b>	<b>FY2021 Governor</b>
Management/Consulting		include, but not limited to: accounting; internal audit; budget preparation and management; federal and state financial reporting; procurement; human resources; and travel.			
3038 Inter-Agency Management/Consulting	E&ED - Information Services (2148)	Information Services support for centralized information technology services to include, but not limited to: database; network and server support; website maintenance; computer and data security; computer and computer periphery support; and maintenance agreements.	25.3	25.3	25.3

**Personal Services Expenditure Detail**  
**Department of Education and Early Development**

**Scenario:** FY2021 Governor (16414)  
**Component:** School Finance & Facilities (2737)  
**RDU:** Education Support and Administrative Services (677)

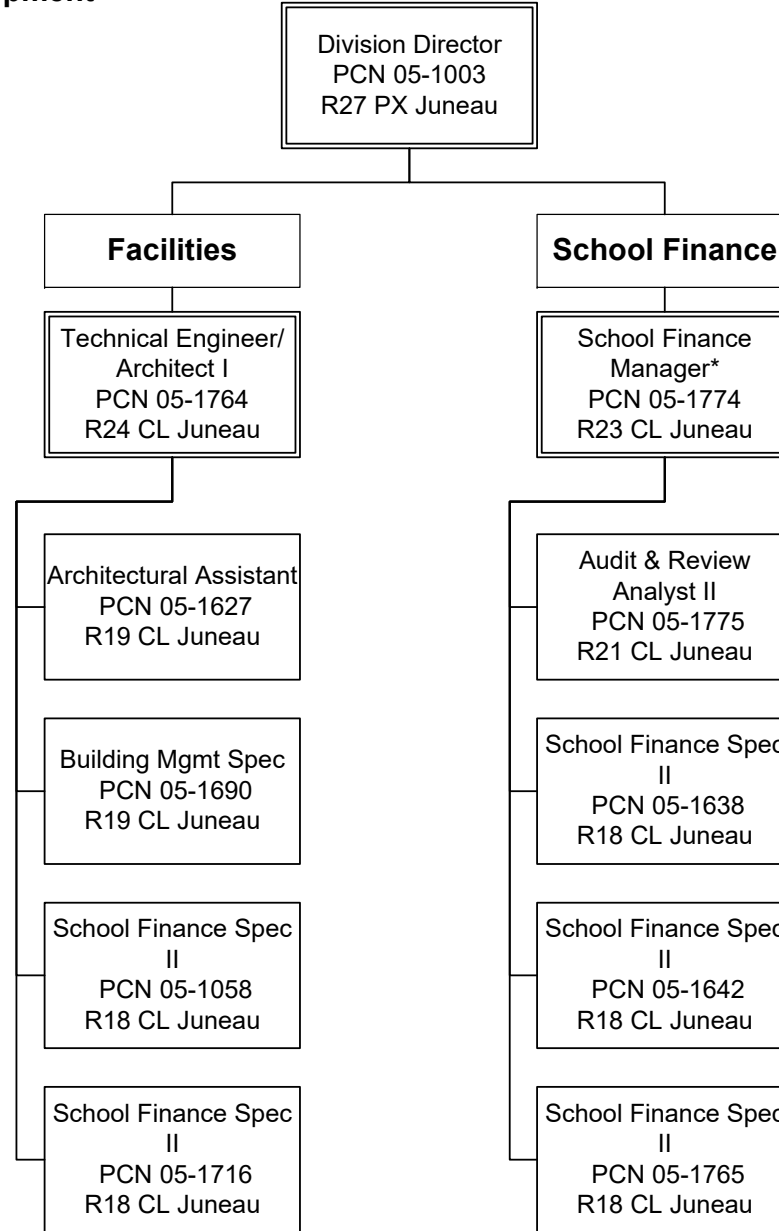
PCN	Job Class Title	Time Status	Retire Code	Barg Unit	Location	Salary Sched	Range / Step	Comp Months	Split / Count	Annual Salaries	COLA	Premium Pay	Annual Benefits	Total Costs	UGF Amount
05-1003	Division Director - Px	FT	A	XE	Juneau	N05	27K	6.0	**	68,832	0	0	32,973	101,805	101,805
05-1058	School Finance Specialist II	FT	A	GP	Juneau	205	18K / L	12.0		83,834	1,126	0	47,571	132,531	0
05-1627	Architectural Assistant	FT	A	GP	Juneau	205	19D / E	12.0		75,451	1,014	0	44,693	121,158	0
05-1638	School Finance Specialist II	FT	A	GP	Juneau	205	18G	12.0		75,936	1,020	0	44,859	121,815	121,815
05-1642	School Finance Specialist II	FT	A	GP	Juneau	99	18O	12.0		93,662	1,258	0	50,944	145,864	145,864
05-1690	Building Management Specialist	FT	A	GP	Juneau	205	19J / K	12.0		86,770	1,166	0	48,578	136,514	0
05-1716	School Finance Specialist II	FT	A	GP	Juneau	205	18G / J	12.0		79,056	1,062	0	45,930	126,048	0
05-1764	Tech Eng/Arch I	FT	A	SS	Juneau	205	24M	12.0		134,844	0	0	65,122	199,966	0
05-1765	School Finance Specialist II	FT	A	GP	Juneau	205	18L / M	12.0		86,670	1,164	0	48,544	136,378	136,378
05-1774	School Finance Manager	FT	A	SS	Juneau	99	23O / P	12.0		141,470	0	0	67,111	208,581	208,581
05-1775	Audit & Review Analyst II	FT	A	GP	Juneau	205	21L / M	12.0		103,408	1,389	0	54,290	159,087	159,087

<b>Total Positions</b>			<b>New</b>	<b>Deleted</b>	<b>Total Salary Costs:</b>	1,029,933
<b>Full Time Positions:</b>	11	0	0		<b>Total COLA:</b>	9,199
<b>Part Time Positions:</b>	0	0	0		<b>Total Premium Pay:</b>	0
<b>Non Permanent Positions:</b>	0	0	0		<b>Total Benefits:</b>	550,615
<b>Positions in Component:</b>	11	0	0		<b>Total Pre-Vacancy:</b>	1,589,747
					<b>Minus Vacancy Adjustment of 0.00%:</b>	(0)
					<b>Total Post-Vacancy:</b>	1,589,747
					<b>Plus Lump Sum Premium Pay:</b>	0
					<b>Personal Services Line 100:</b>	1,589,747

<b>PCN Funding Sources:</b>	<b>Pre-Vacancy</b>	<b>Post-Vacancy</b>	<b>Percent</b>
1004 General Fund Receipts	873,530	873,530	54.95%
1007 Interagency Receipts	716,217	716,217	45.05%
<b>Total PCN Funding:</b>	<b>1,589,747</b>	<b>1,589,747</b>	<b>100.00%</b>

Note: If a position is split, an asterisk (\*) will appear in the Split/Count column. If the split position is also counted in the component, two asterisks (\*\*) will appear in this column. [No valid job title] appearing in the Job Class Title indicates that the PCN has an invalid class code or invalid range for the class code effective date of this scenario.

**State of Alaska**  
**Department of Education and Early Development**  
**School Finance and Facilities (2737)**  
**FY2021 Governor Organization Chart**



\* PCN 05-1774 also supervises PCN 05-7606 in the Administrative Services component.