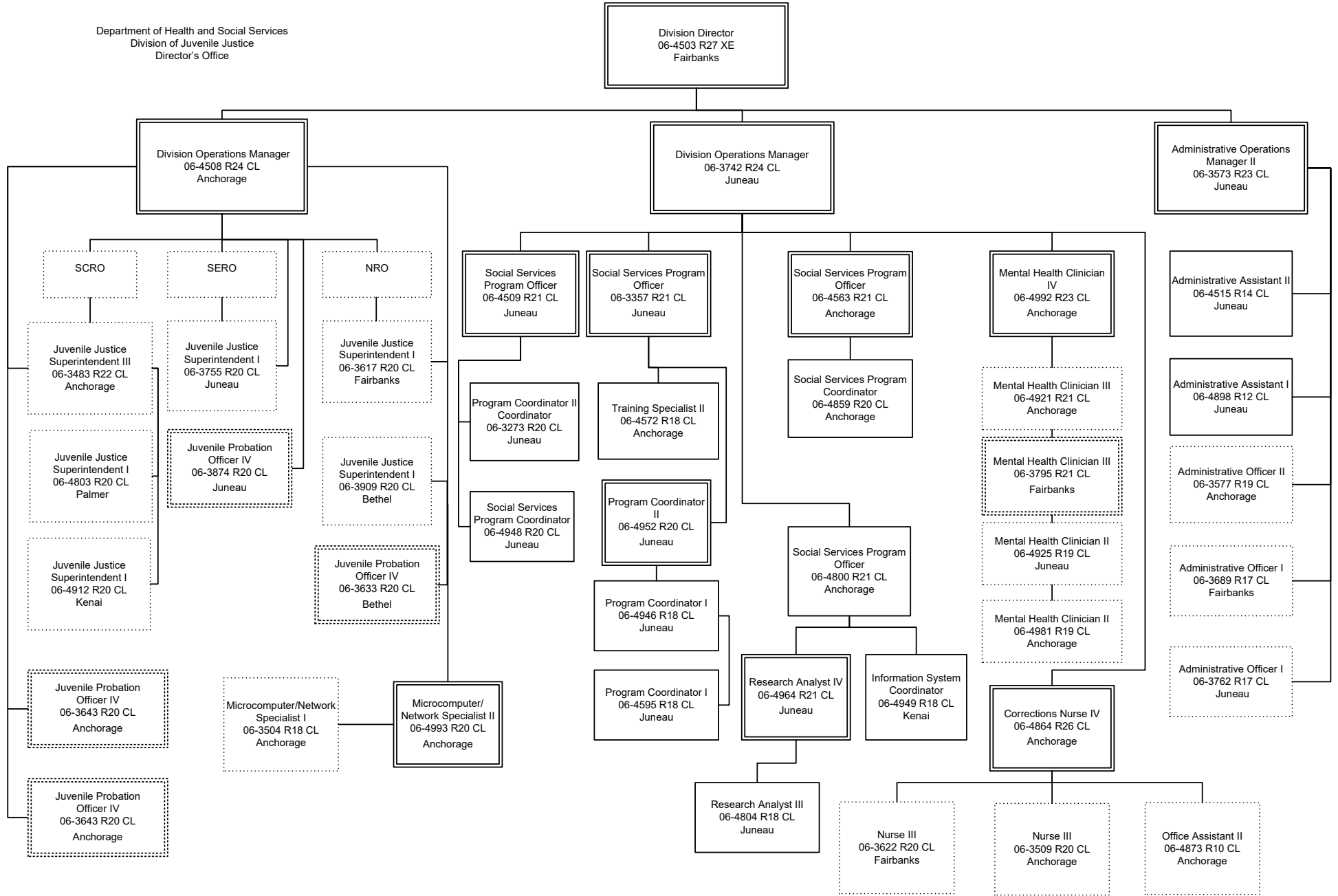
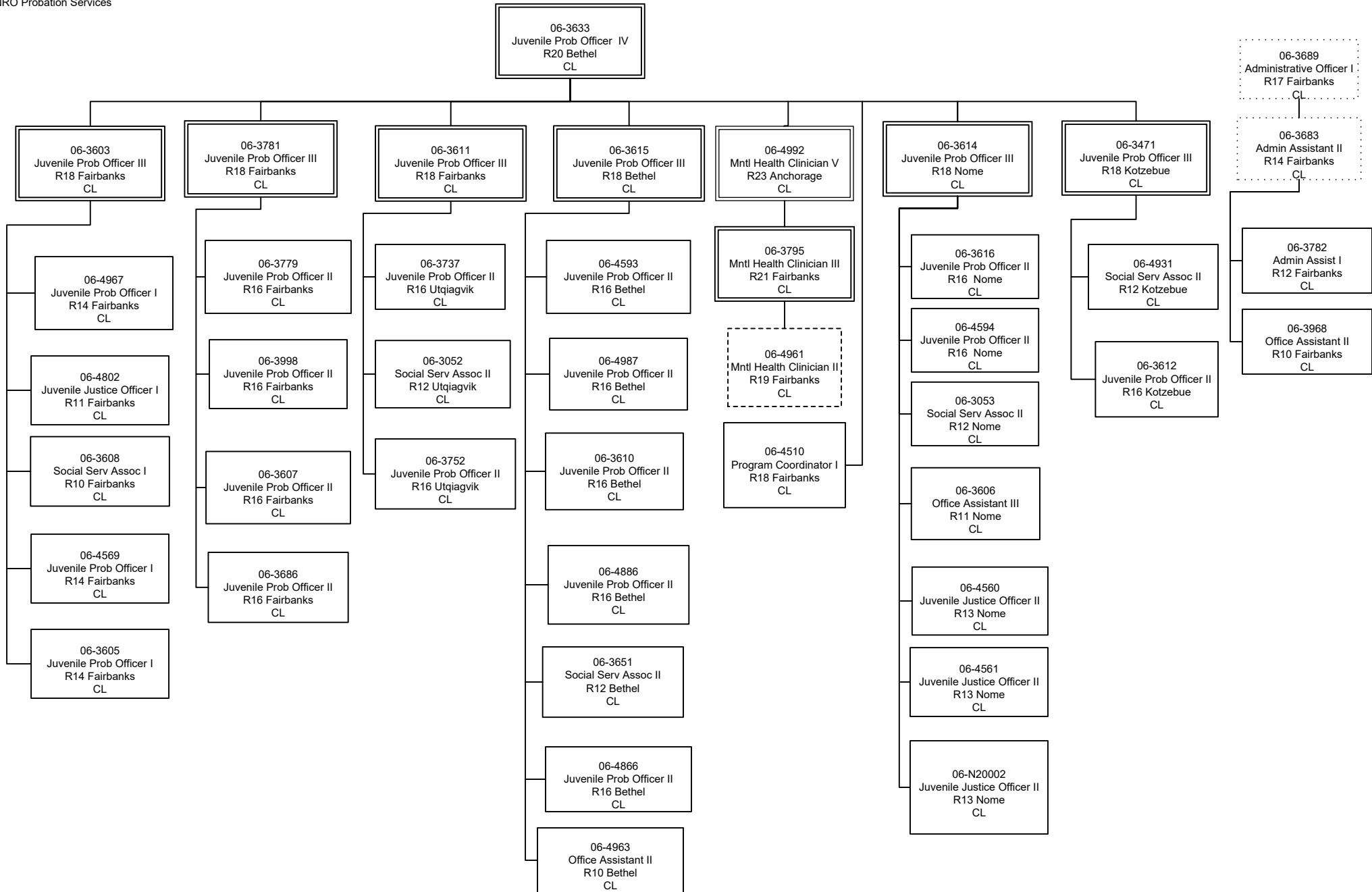
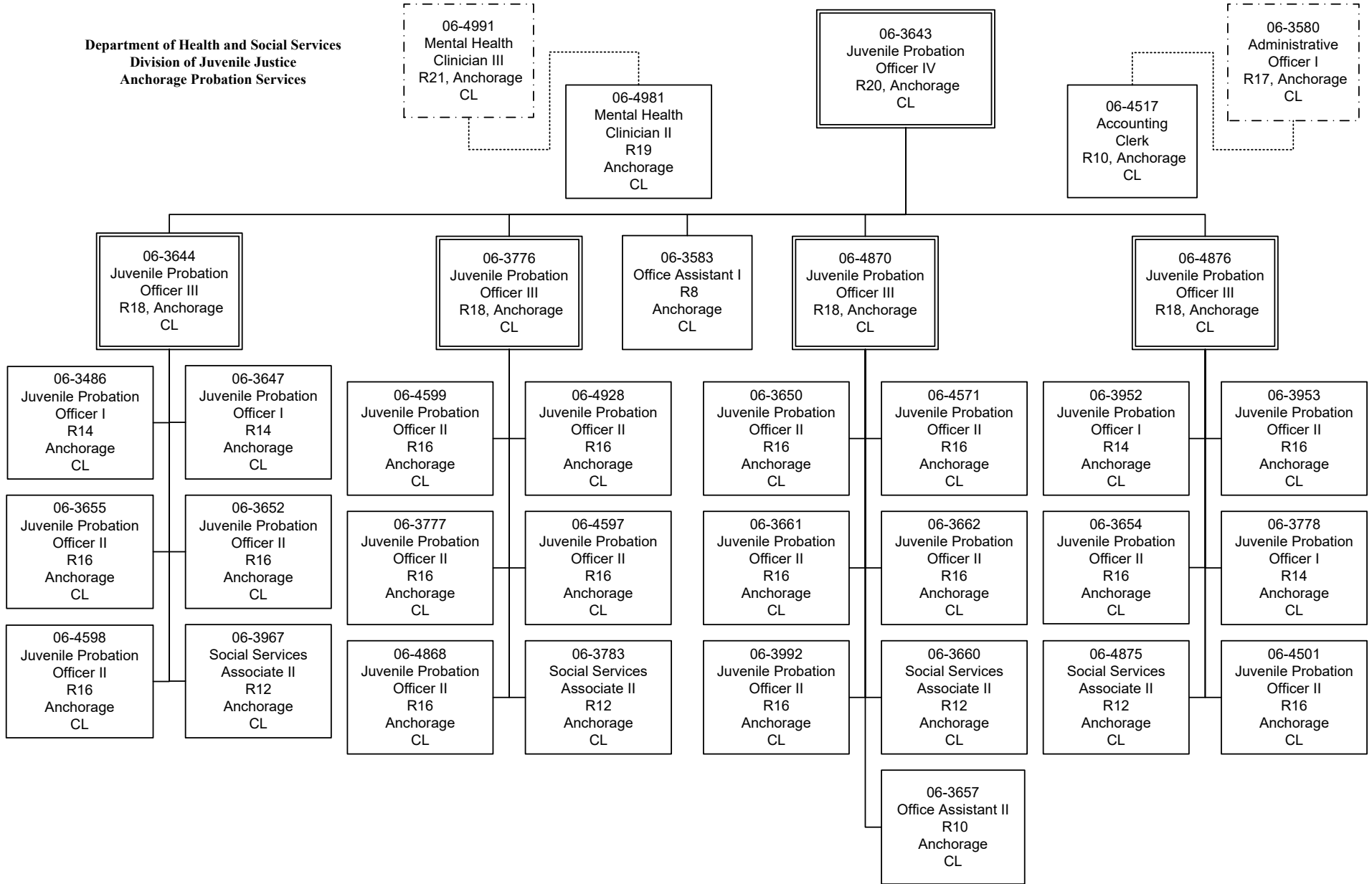


Department of Health and Social Services
 Division of Juvenile Justice
 Director's Office





Department of Health and Social Services
 Division of Juvenile Justice
 Anchorage Probation Services



Department of Health and Social Services
 Division of Juvenile Justice
 Southcentral Probation Services

06-3666
 Juvenile Probation Officer
 IV
 R20, Palmer
 CL

06-3050
 Juvenile Probation
 Officer III
 R18, Dillingham
 CL

06-3775
 Juvenile Probation
 Officer III
 R18, Palmer
 CL

06-3668
 Juvenile Probation
 Officer III
 R18, Palmer
 CL

06-4892
 Juvenile Probation
 Officer III
 R18, Kenai
 CL

06-3659
 Social Services
 Associate II
 R12
 Dillingham
 CL

06-3854
 Social Services
 Associate II
 R12
 Kodiak
 CL

06-4932
 Juvenile Probation
 Officer II
 R16
 Kodiak
 CL

06-3669
 Social Services
 Associate II
 R12
 Palmer
 CL

06-3051
 Juvenile Probation
 Officer II
 R16
 Palmer
 CL

06-4918
 Juvenile Probation
 Officer II
 R16
 Kenai
 CL

06-3667
 Social Services
 Associate II
 R12
 Kenai
 CL

06-4929
 Juvenile Probation
 Officer II
 R16
 Dillingham
 CL

06-3664
 Juvenile Probation
 Officer II
 R16
 Palmer
 CL

06-3993
 Juvenile Probation
 Officer I
 R14
 Valdez
 CL

06-4919
 Juvenile Probation
 Officer II
 R16
 Palmer
 CL

06-3656
 Juvenile Probation
 Officer II
 R16
 Palmer
 CL

06-4867
 Juvenile Probation
 Officer I
 R14
 Kenai
 CL

06-3774
 Juvenile Probation
 Officer II
 R16
 Kenai
 CL

06-3994
 Juvenile Probation
 Officer II
 R16
 Palmer
 CL

06-4927
 Juvenile Probation
 Officer II
 R16
 Palmer
 CL

06-3646
 Juvenile Probation
 Officer I/II
 R14/16
 Kenai
 CL

06-4933
 Juvenile Probation
 Officer II
 R16
 Kenai
 CL

Department of Health and Social Services
Division of Juvenile Justice
Southeast Regional Probation

