

State of Alaska FY2021 Governor's Operating Budget

Department of Health and Social Services Public Assistance Field Services Component Budget Summary

Component: Public Assistance Field Services

Contribution to Department's Mission

Promoting self-sufficiency and providing for basic living expenses to Alaskans in need.

Core Services

- Provide direct customer services in 14 offices statewide.
- Accept applications, conduct interviews, determine eligibility, and authorize timely and accurate benefits for the following programs: Supplemental Nutrition Assistance Program, Alaska Temporary Assistance, Medicaid, Adult Public Assistance, General Relief, Chronic and Acute Medical Assistance, Denali Kid Care, Senior Benefits, Low Income Heating Assistance and Medicare Part D.
- Make referrals and link public assistance recipients to employers, employment services, and social, health, education, and training programs/organizations.
- Collaboration with various departments and divisions in state government as well as regional and community-based organizations to coordinate the effective delivery of services and benefits for common customers.

Major Component Accomplishments in 2019

- Significantly reduced the backlog of applications for all programs from approximately 24,000 to 2,000.
- Created two new work teams to prevent new work from going into backlog and to work on those applications already in backlog.
- Paper files are cumbersome to manage, and paper applications are easy to misplace. An electronic document imaging system has been approved and a contract awarded to implement in FY2020.

Key Component Challenges

The plan to implement a virtual call center was delayed due to significant issues with the contractor. The division is working with Department of Labor and Workforce Development and other agencies to utilize their system.

Significant Changes in Results to be Delivered in FY2021

- Implementation of the Able Bodied Adults Without Dependents rules for nonexempt areas of the state.
- Implement a telephone call management and routing system to support the statewide caseload concept and improve customer satisfaction.
- Leverage technology to enhance service delivery and performance through electronic document imaging.
- Continue to improve recruitment and retention efforts to reduce turnover.

Statutory and Regulatory Authority

AS 47.27.005	Duties of the Department
AS 47.25.430-.615	Adult Public Assistance
AS 47.25.975-.990	Food Stamps
AS 47.07.010-.900	Medicaid
AS 47.45.301-.309	Senior Benefits Program
AS 47.25.120-.300	General Relief Assistance
AS 43.23.075	Eligibility For Public Assistance
AS 47.05.010-.080	Public Assistance

Contact Information

Contact Information

Contact: Sana Efird, Division Director
Phone: (907) 465-1630
E-mail: sana.efird@alaska.gov

Public Assistance Field Services Personal Services Information				
Authorized Positions			Personal Services Costs	
	<u>FY2020</u> <u>Management</u> <u>Plan</u>	<u>FY2021</u> <u>Governor</u>		
Full-time	456	456	Annual Salaries	25,822,376
Part-time	8	8	COLA	292,118
Nonpermanent	0	0	Premium Pay	0
			Annual Benefits	17,995,000
			<i>Less 6.85% Vacancy Factor</i>	<i>(3,020,394)</i>
			Lump Sum Premium Pay	0
Totals	464	464	Total Personal Services	41,089,100

Position Classification Summary					
Job Class Title	Anchorage	Fairbanks	Juneau	Others	Total
Administrative Assistant II	4	1	0	3	8
Chf Pub Asst Fo	1	0	0	0	1
Eligibility Office Manager I	0	0	0	2	2
Eligibility Office Manager II	3	1	1	3	8
Eligibility Technician I	0	0	10	0	10
Eligibility Technician II	93	30	11	102	236
Eligibility Technician III	17	5	2	15	39
Eligibility Technician IV	9	3	1	12	25
Emp Svc Tech II	0	8	0	18	26
Emp Svc Techiii	0	1	0	2	3
Employment Services Manager II	1	0	0	0	1
Office Assistant I	18	6	2	17	43
Office Assistant II	8	1	2	13	24
Office Assistant III	1	0	0	0	1
Office Assistant IV	3	1	1	4	9
Pb Asst Fsm I	1	0	0	1	2
Pb Asst Fsmii	2	1	0	2	5
Public Assistance Analyst I	6	0	0	0	6
Public Assistance Analyst II	6	0	0	0	6
Public Asst P/O	1	0	0	0	1
Ss Prog Coord	1	0	0	0	1
Training Specialist II	5	0	1	0	6
Training Specialist III	1	0	0	0	1
Totals	181	58	31	194	464

Component Detail All Funds
Department of Health and Social Services

Component: Public Assistance Field Services (236)
RDU: Public Assistance (73)

Non-Formula Component

	FY2019 Actuals	FY2020 Conference Committee	FY2020 Authorized	FY2020 Management Plan	FY2021 Governor	FY2020 Management Plan vs FY2021 Governor	
71000 Personal Services	35,716.3	41,800.1	41,800.1	40,114.9	41,089.1	974.2	2.4%
72000 Travel	226.8	68.4	68.4	154.0	154.0	0.0	0.0%
73000 Services	16,252.3	10,528.1	10,528.1	16,081.0	16,081.0	0.0	0.0%
74000 Commodities	664.0	526.2	526.2	657.0	657.0	0.0	0.0%
75000 Capital Outlay	1.4	15.0	15.0	15.0	15.0	0.0	0.0%
77000 Grants, Benefits	0.0	0.0	0.0	0.0	0.0	0.0	0.0%
78000 Miscellaneous	0.0	0.0	0.0	0.0	0.0	0.0	0.0%
Totals	52,860.8	52,937.8	52,937.8	57,021.9	57,996.1	974.2	1.7%
Fund Sources:							
1002 Fed Rcpts (Fed)	29,004.2	28,465.9	28,465.9	32,890.7	33,609.2	718.5	2.2%
1003 G/F Match (UGF)	21,129.0	18,649.5	18,649.5	17,736.5	21,931.9	4,195.4	23.7%
1004 Gen Fund (UGF)	453.1	3,949.4	3,949.4	3,949.4	0.0	-3,949.4	-100.0%
1007 I/A Rcpts (Other)	2,274.5	1,727.7	1,727.7	2,300.0	2,309.0	9.0	0.4%
1108 Stat Desig (Other)	0.0	145.3	145.3	145.3	146.0	0.7	0.5%
Unrestricted General (UGF)	21,582.1	22,598.9	22,598.9	21,685.9	21,931.9	246.0	1.1%
Designated General (DGF)	0.0	0.0	0.0	0.0	0.0	0.0	0.0%
Other Funds	2,274.5	1,873.0	1,873.0	2,445.3	2,455.0	9.7	0.4%
Federal Funds	29,004.2	28,465.9	28,465.9	32,890.7	33,609.2	718.5	2.2%
Positions:							
Permanent Full Time	462	466	466	456	456	0	0.0%
Permanent Part Time	8	8	8	8	8	0	0.0%
Non Permanent	0	0	0	0	0	0	0.0%

Change Record Detail - Multiple Scenarios with Descriptions
Department of Health and Social Services

Component: Public Assistance Field Services (236)
RDU: Public Assistance (73)

Scenario/Change Record Title	Trans Type	Totals	Personal Services	Travel	Services	Commodities	Capital Outlay	Grants, Benefits	Miscellaneous	Positions		NP
										PFT	PPT	
***** Changes From FY2020 Conference Committee To FY2020 Authorized *****												
FY2020 Conference Committee												
	ConfCom	52,937.8	41,800.1	68.4	10,528.1	526.2	15.0	0.0	0.0	466	8	0
1002 Fed Rcpts		28,465.9										
1003 G/F Match		18,649.5										
1004 Gen Fund		3,949.4										
1007 I/A Rcpts		1,727.7										
1108 Stat Desig		145.3										
Subtotal		52,937.8	41,800.1	68.4	10,528.1	526.2	15.0	0.0	0.0	466	8	0
***** Changes From FY2020 Authorized To FY2020 Management Plan *****												
Transfer Eligibility Technicians to Information Technology Services for Eligibility System Operations and Maintenance												
	Trout	0.0	0.0	0.0	0.0	0.0	0.0	0.0	0.0	-6	0	0
Transfer positions from Public Assistance Field Services to Information Technology Services for the public assistance eligibility system:												
Full-time Eligibility Technician II (06-8682), range 14, located in Wasilla												
Full-time Eligibility Technician II (06-8683), range 14, located in Wasilla												
Full-time Eligibility Technician II (06-8684), range 14, located in Wasilla												
Full-time Eligibility Technician II (06-8685), range 14, located in Wasilla												
Full-time Eligibility Technician II (06-8686), range 14, located in Wasilla												
Full-time Eligibility Technician II (06-8688), range 14, located in Wasilla												
Transfer Eligibility Technicians (02-2135, 02-2136, 02-2137) to Administrative Support Services for Classification												
	Trout	0.0	0.0	0.0	0.0	0.0	0.0	0.0	0.0	-3	0	0
The following positions are transferred to Administrative Support Services for classification activities:												
Full-time Eligibility Technician II (02-2135), range 14, located in Wasilla												
Full-time Eligibility Technician II (02-2136), range 14, located in Wasilla												
Full-time Eligibility Technician IV (02-2137), range 17, located in Kodiak												
Transfer Office Assistant II (06-4111) to Commissioner's Office												
	Trout	0.0	0.0	0.0	0.0	0.0	0.0	0.0	0.0	-1	0	0
Transfer a full-time Office Assistant II (06-4111), range 10, located in Anchorage to the Commissioner's Office.												
Transfer to Child Care Benefits and Quality Control to Align with Anticipated Expenditures												
	Trout	-913.0	-913.0	0.0	0.0	0.0	0.0	0.0	0.0	0	0	0
1003 G/F Match		-913.0										

Change Record Detail - Multiple Scenarios with Descriptions
Department of Health and Social Services

Component: Public Assistance Field Services (236)
RDU: Public Assistance (73)

Scenario/Change Record Title	Trans Type	Totals	Personal Services	Travel	Services	Commodities	Capital Outlay	Grants, Benefits	Miscellaneous	Positions		NP
										PFT	PPT	
Transfer from Public Assistance Field Services to Child Care Benefits and Quality Control to align with anticipated expenditures. The remaining authority is sufficient to cover anticipated expenditures.												
Transfer from ATAP, Adult Public Assistance and Tribal Assistance for Permanent Fund Dividend Hold Harmless												
1007 I/A Rcpts	Trin	572.3	572.3	0.0	0.0	0.0	0.0	0.0	0.0	0	0	0
Transfer from Alaska Temporary Assistance Program, Adult Public Assistance and Tribal Assistance Programs to fully collect the Permanent Fund Dividend Hold Harmless reimbursable services agreement.												
Transfer from Public Assistance Administration to Align with Anticipated Expenditures												
1002 Fed Rcpts	Trin	118.7	49.9	0.0	0.0	68.8	0.0	0.0	0.0	0	0	0
Transfer from Public Assistance Admin to Public Assistance Field Services to align with anticipated expenditures.												
Transfer from Child Care Benefits to Align with Anticipated Expenditures												
1002 Fed Rcpts	Trin	4,306.1	4,306.1	0.0	0.0	0.0	0.0	0.0	0.0	0	0	0
Transfer from Child Care Benefits to Public Assistance Field Services to align with anticipated expenditures.												
Align Authority with Anticipated Expenditures												
	LIT	0.0	-5,700.5	85.6	5,552.9	62.0	0.0	0.0	0.0	0	0	0
Transfer authority from personal services to cover anticipated travel, services, and commodities costs. The remaining personal services authority is sufficient to cover anticipated expenditures due to the transfer of positions to other sections.												
Subtotal		57,021.9	40,114.9	154.0	16,081.0	657.0	15.0	0.0	0.0	456	8	0
***** Changes From FY2020 Management Plan To FY2021 Governor *****												
Reverse New Positions to Address Increased Caseloads (FY19-FY21)												
1002 Fed Rcpts	OTI	-2,214.3	-2,051.0	-10.0	-100.0	-53.3	0.0	0.0	0.0	-20	0	0
1003 G/F Match		-1,107.1										

The division's application backlog began to steadily increase in FY2014. The increase is mostly attributed to the following: the introduction of modified adjusted gross income Medicaid; introduction of a new eligibility information system which resulted in the need for staff to calculate modified adjusted gross income Medicaid eligibility using a manual budget sheet; loss of staff productivity due to training on the new system; staff continuing to work in both the new and legacy eligibility systems as not all programs are on the new system; consistent increase in customers applying for services; and the elimination of nonpermanent staff which were funded by the Mental Health Trust.

Change Record Detail - Multiple Scenarios with Descriptions
Department of Health and Social Services

Component: Public Assistance Field Services (236)
RDU: Public Assistance (73)

Scenario/Change Record Title	Trans Type	Totals	Personal Services	Travel	Services	Commodities	Capital Outlay	Grants, Benefits	Miscellaneous	Positions		
										PFT	PPT	NP

While the majority of public assistance program case levels have remained relatively steady over the last five years, there has been an increase in Medicaid and Supplemental Nutrition Assistance Program cases. Medicaid cases have increased by approximately 43,000 and Supplemental Nutrition Assistance Program by approximately 7,500 between FY2012 and FY2017. The division receives approximately 11,000 applications a month, 8,000 of those are for Medicaid or the Supplemental Nutrition Assistance Program.

The 2018 Legislature approved 20 new positions and \$2,214.3 temporary authority for FY2019 through FY2021. In the months since this initiative took effect, the division has reduced the statewide backlog by approximately one-third. These positions are needed in FY2020 to ensure the division can continue to reduce the application backlog.

Restore New Positions to Address Increased Caseloads (FY19-FY21)

	IncT	2,214.3	2,051.0	10.0	100.0	53.3	0.0	0.0	0.0	20	0	0
1002 Fed Rcpts		1,107.2										
1003 G/F Match		1,107.1										

The division's application backlog began to steadily increase in FY2014. The increase is mostly attributed to the following: the introduction of modified adjusted gross income Medicaid; introduction of a new eligibility information system which resulted in the need for staff to calculate modified adjusted gross income Medicaid eligibility using a manual budget sheet; loss of staff productivity due to training on the new system; staff continuing to work in both the new and legacy eligibility systems as not all programs are on the new system; consistent increase in customers applying for services; and the elimination of nonpermanent staff which were funded by the Mental Health Trust.

While the majority of public assistance program case levels have remained relatively steady over the last five years, there has been an increase in Medicaid and Supplemental Nutrition Assistance Program cases. Medicaid cases have increased by approximately 43,000 and Supplemental Nutrition Assistance Program by approximately 7,500 between FY2012 and FY2017. The division receives approximately 11,000 applications a month, 8,000 of those are for Medicaid or the Supplemental Nutrition Assistance Program.

The 2018 Legislature approved 20 new positions and \$2,214.3 temporary authority for FY2019 through FY2021. In the time since this initiative took effect, the division has reduced the statewide backlog to approximately 2000 cases. These positions are needed in FY2021 to ensure the division can continue to reduce the application backlog.

Transfer from Alaska Temporary Assistance Program to Align with Anticipated Expenditures

	Trin	450.0	450.0	0.0	0.0	0.0	0.0	0.0	0.0	0	0	0
1002 Fed Rcpts		450.0										

Transfer authority from Alaska Temporary Assistance Program to Public Assistance Field Services to align with anticipated expenditures. The remaining authority in Alaska Temporary Assistance Program is sufficient to cover anticipated expenditures.

Replace to Align with Anticipated Expenditures

	FndChg	0.0	0.0	0.0	0.0	0.0	0.0	0.0	0.0	0	0	0
1003 G/F Match		3,981.8										
1004 Gen Fund		-3,981.8										

Replace general fund with general fund match to reflect proper use of funds and aligns authority with anticipated expenditures. General fund match authority is

Change Record Detail - Multiple Scenarios with Descriptions
Department of Health and Social Services

Component: Public Assistance Field Services (236)

RDU: Public Assistance (73)

Scenario/Change Record Title	Trans Type	Totals	Personal Services	Travel	Services	Commodities	Capital Outlay	Grants, Benefits	Miscellaneous	Positions		NP
										PFT	PPT	
needed to meet matching requirements for federal programs in the division. The general fund authority is not fully utilized and is often replaced for general fund match authority as needed.												
FY2021 Salary and Health Insurance Increases												
	SalAdj	524.2	524.2	0.0	0.0	0.0	0.0	0.0	0.0	0	0	0
1002 Fed Rcpts		268.5										
1003 G/F Match		213.6										
1004 Gen Fund		32.4										
1007 I/A Rcpts		9.0										
1108 Stat Desig		0.7										
FY2021 GGU Salary Increases: \$342.3												
FY2021 increase to GGU Health Insurance from \$1530 to \$1555 per member per month: \$181.9												
Totals		57,996.1	41,089.1	154.0	16,081.0	657.0	15.0	0.0	0.0	456	8	0

Line Item Detail (1676)
Department of Health and Social Services
Travel

Component: Public Assistance Field Services (236)

Line Number	Line Name		FY2019 Actuals	FY2020 Management Plan	FY2021 Governor
2000	Travel		226.8	154.0	154.0
Object Class	Servicing Agency	Explanation	FY2019 Actuals	FY2020 Management Plan	FY2021 Governor
2000 Travel Detail Totals			226.8	154.0	154.0
2000	In-State Employee Travel	In state travel for employees.	215.7	151.0	142.5
		In-state travel for new worker training and reinforcement training for experienced employees. This travel and per diem is necessary for worker training in rural areas as well as for attendance for new and experienced workers at periodic specialized training sessions. Most of the 14 Division of Public Assistance (DPA) district offices participate at different levels in this training program each year. This provides travel resources for DPA program training of Fee Agents who provide DPA application processing services in over 150 rural communities.			
2001	In-State Non-Employee Travel	Client related travel.	0.7	3.0	3.0
2002	Out of State Employee Travel	Travel for training and/or conferences out of state.	8.5	0.0	8.5
2005	Moving Costs		0.9	0.0	0.0
2006	Other Travel Costs		1.0	0.0	0.0

Line Item Detail (1676)
Department of Health and Social Services
Services

Component: Public Assistance Field Services (236)

Line Number	Line Name		FY2019 Actuals	FY2020 Management Plan	FY2021 Governor
3000	Services		16,252.3	16,081.0	16,081.0
Object Class	Servicing Agency	Explanation	FY2019 Actuals	FY2020 Management Plan	FY2021 Governor
3000 Services Detail Totals			16,252.3	16,081.0	16,081.0
3000	Education Services		14.3	0.0	0.0
3001	Financial Services	The State pays the current contractor based on a cost-per-case-month for each time a benefit is loaded on the Alaska QUEST Card and for the direct deposits made each month. This also includes access and support managing the contract Web Admin Browser and Disaster Services.	595.1	568.0	595.1
		Fee agents.			
		Citrix online training services.			
3002	Legal and Judicial Services		0.0	15.5	0.0
3003	Information Technology	Software & Licensing	1,054.2	475.0	475.0
3004	Telecommunications	Telecommunications for vendor local, long distance, network installation and equipment rental, dedicated telephone lines for office equipment, telecopier expenses and teleconference charges.	222.5	588.2	223.0
3005	Health Services	Contract work for Tax Equity and Fiscal Responsibility Act Medicaid with Qualis Health.	448.1	570.0	570.0
		Unarmed security guard services.			
3006	Delivery Services	Freight/shipping, express charges	1,378.7	964.4	1,379.0

Line Item Detail (1676)
Department of Health and Social Services
Services

Component: Public Assistance Field Services (236)

Object Class	Servicing Agency	Explanation	FY2019 Actuals	FY2020 Management Plan	FY2021 Governor
3000 Services Detail Totals			16,252.3	16,081.0	16,081.0
		and postage for Public Assistance (PA) local field offices and postage for PA recipient mailings (computer generated mailings include recipient benefits, notices and recertifications).			
3007	Advertising and Promotions	Advertising for required public notice program changes and services.	0.8	0.5	0.5
3008	Utilities	Public Utilities Services - Electricity and utilities not included in certain district office lease agreements.	20.2	31.0	31.0
3009	Structure/Infrastructure/Land	Structure changes to work space to better align the business process.	2,778.8	2,940.0	2,800.0
3010	Equipment/Machinery	Contractual costs for maintenance and replacement of state owned equipment.	320.3	275.0	340.0
3011	Other Services	Telephone interpreter service contract. Fee Agents. Printing Services. Safety Services. Consulting Services. Software Licenses	2,258.7	1,882.0	2,565.6
3017	Inter-Agency Information Technology Non-Telecommunications	Admin - Department-wide Reimbursable Services Agreement for Management Information Computer Systems, Reimbursable Services Agreement for Office of Information Technology Core Services, Reimbursable Services Agreement for Alaska's Resource for Integrated Eligibility Services Server Hosting, Microsoft License Chargeback	3,281.8	0.0	3,300.0
3017	Inter-Agency Information Technology Non-Telecommunications	H&SS - Information Technology Services (2754) Reimbursable Services Agreement for business applications support.	2,242.0	2,564.5	2,250.0
3017	Inter-Agency Information Technology	H&SS - Public Assistance Field Svcs	35.1	0.0	0.0

Line Item Detail (1676)
Department of Health and Social Services
Services

Component: Public Assistance Field Services (236)

Object Class	Servicing Agency	Explanation	FY2019 Actuals	FY2020 Management Plan	FY2021 Governor
3000 Services Detail Totals			16,252.3	16,081.0	16,081.0
	Non-Telecommunications (236)				
3017	Inter-Agency Information Technology Non-Telecommunications	Admin - Department-wide Reimbursable Services Agreement for Mainframe Information Control System support.	0.0	3,100.7	0.0
3018	Inter-Agency Information Technology Telecommunications	Admin - Department-wide Telephone Services for field services offices.	167.6	168.0	170.0
		Reimbursable Services Agreement with Department of Administration, Enterprise Technology Services for Telecommunication.			
3018	Inter-Agency Information Technology Telecommunications	Legis - Department-wide	0.1	0.0	0.0
3019	Inter-Agency Storage	H&SS - Public Assistance Field Svcs (236) Storage	0.5	0.0	0.5
3021	Inter-Agency Mail	Admin - Department-wide Reimbursable Services Agreement for central mail services.	62.3	55.0	63.0
3022	Inter-Agency Human Resources	Admin - Department-wide Reimbursable Services Agreement with Department of Administration for Human Resources.	311.8	311.7	312.0
3023	Inter-Agency Building Leases	Trans - Department-wide Disposal	13.5	0.0	13.5
3024	Inter-Agency Legal	Law - Department-wide Reimbursable Services Agreement for regulation review and Health Insurance Portability and Accountability Act compliance.	12.4	7.8	13.0
3025	Inter-Agency Auditing	H&SS - Administrative Support Svcs (320) Reimbursable Services Agreement for audit support.	0.0	18.2	8.0
3026	Inter-Agency Insurance	Admin - Department-wide Reimbursable Services Agreement with the Department of Administration Risk Management for insurance.	30.7	30.0	31.0
3027	Inter-Agency Financial	Admin - Department-wide Reimbursable Services Agreement for Integrated Resource Information	119.7	178.5	120.0

Line Item Detail (1676)
Department of Health and Social Services
Services

Component: Public Assistance Field Services (236)

Object Class	Servicing Agency	Explanation	FY2019 Actuals	FY2020 Management Plan	FY2021 Governor
3000 Services Detail Totals			16,252.3	16,081.0	16,081.0
		System (IRIS) financial, IRIS payroll, and Alaska Data Enterprise Reporting.			
3028	Inter-Agency Americans with Disabilities Act Compliance	Admin - Department-wide Reimbursable Services Agreement for Americans with Disabilities Act compliance services.	3.2	3.2	3.5
3030	Inter-Agency Hearing/Mediation	Admin - Department-wide	0.8	0.0	0.0
3032	Inter-Agency Health	H&SS - Bureau of Vital Statistics (961) Reimbursable Services Agreement with Division of Public Health's Bureau of Vital Statistics.	30.0	40.0	40.0
3037	State Equipment Fleet	Trans - Department-wide Fuel and vehicle service charges	29.9	0.0	31.0
3038	Inter-Agency Management/Consulting	Admin - Department-wide Shared Services Chargeback. Reimbursable Services Agreement for Population Estimates Demographic Support.	20.3	0.0	20.3
3038	Inter-Agency Management/Consulting	H&SS - Administrative Support Svcs (320) Computer Refresh	199.5	335.0	200.0
3038	Inter-Agency Management/Consulting	H&SS - Commissioner's Office (317) Commissioner's Office Chargeback	23.5	0.0	34.0
3038	Inter-Agency Management/Consulting	H&SS - Public Affairs (2874) Reimbursable Services Agreement for Public Affairs	72.9	0.0	76.0
3038	Inter-Agency Management/Consulting	H&SS - Senior/Disabilities Svcs Admin (2663) Reimbursable Services Agreement for Tax Equity and Fiscal Responsibility Act (TEFRA).	155.9	0.0	158.0
3038	Inter-Agency Management/Consulting	Labor - Department-wide Reimbursable Services Agreement with the Disability Determination Services (under Dept of Labor VOC Rehab) for the state only disability determinations for Medicaid applicants who need a disability decision as part of Medicaid eligibility. Reimbursable Services Agreement for Alaska Workforce	257.1	0.0	258.0

Line Item Detail (1676)
Department of Health and Social Services
Services

Component: Public Assistance Field Services (236)

Object Class	Servicing Agency	Explanation	FY2019 Actuals	FY2020 Management Plan	FY2021 Governor
3000 Services Detail Totals			16,252.3	16,081.0	16,081.0
		Investment Board.			
3038	Inter-Agency Management/Consulting	Rev - Department-wide	90.0	0.0	0.0
3038	Inter-Agency Management/Consulting	Labor - Department-wide	0.0	260.0	0.0
3038	Inter-Agency Management/Consulting	Admin - Department-wide	0.0	541.0	0.0
3038	Inter-Agency Management/Consulting	H&SS - Senior/Disabilities Svcs Admin (2663)	0.0	157.8	0.0

Line Item Detail (1676)
Department of Health and Social Services
Commodities

Component: Public Assistance Field Services (236)

Line Number	Line Name		FY2019 Actuals	FY2020 Management Plan	FY2021 Governor
4000	Commodities		664.0	657.0	657.0
Object Class	Servicing Agency	Explanation	FY2019 Actuals	FY2020 Management Plan	FY2021 Governor
4000 Commodities Detail Totals			664.0	657.0	657.0
4000	Business	Office supplies. Computer Refresh. Subscription for Geonorth Information Systems.	661.7	657.0	657.0
4002	Household/Institutional		1.6	0.0	0.0
4006	Signs and Markers		0.2	0.0	0.0
4015	Parts and Supplies		0.5	0.0	0.0

Line Item Detail (1676)
Department of Health and Social Services
Capital Outlay

Component: Public Assistance Field Services (236)

Line Number	Line Name		FY2019 Actuals	FY2020 Management Plan	FY2021 Governor
5000	Capital Outlay		1.4	15.0	15.0
Object Class	Servicing Agency	Explanation	FY2019 Actuals	FY2020 Management Plan	FY2021 Governor
5000 Capital Outlay Detail Totals			1.4	15.0	15.0
5002	Structures and Infrastructure		1.4	0.0	0.0
5004	Equipment	Copier	0.0	15.0	15.0

Revenue Detail (1681)
Department of Health and Social Services

Component: Public Assistance Field Services (236)

Revenue Type (OMB Fund Code) Revenue Source	Component	Comment	FY2019 Actuals	FY2020 Management Plan	FY2021 Governor
5002 Fed Rcpts (1002 Fed Rcpts)			28,830.5	32,890.7	33,609.2
5019 Federal - Miscellaneous Grants		<p>Take note that this funding source has been identified as a potential shortfall, pending final closeout of encumbrances, the shortfall may clear itself or require action in the form of a ratification.</p> <p>Supplemental Nutrition Assistance Program-Federal restricted receipts are based on an approved cost allocation plan using staff time studies and document counts to allocate costs by federal program.</p> <p>Title IV A-Federal restricted receipts are based on an approved cost allocation plan using staff time studies and document counts to allocate costs by federal program.</p> <p>Title XIX Map-Federal restricted receipts are based on an approved cost allocation plan using staff time studies and document counts to allocate costs by federal program.</p> <p>Title XIX Map Admin-Federal restricted receipts are based on an approved cost allocation plan using staff time studies and document counts to allocate costs by federal program.</p> <p>Federal Projects Health-Federal restricted receipts are based on an approved cost allocation plan using</p>	28,830.5	32,890.7	33,609.2

Revenue Detail (1681)
Department of Health and Social Services

Component: Public Assistance Field Services (236)

Revenue Type (OMB Fund Code) Revenue Source	Component	Comment	FY2019 Actuals	FY2020 Management Plan	FY2021 Governor
		staff time studies and document counts to allocate costs by federal program.			
5007 I/A Rcpts (1007 I/A Rcpts)			2,274.5	2,300.0	2,309.0
5301 Inter-Agency Receipts	H&SS - Behavioral Health Administration (2665)	Reimbursable Services Agreement for Medicaid Eligibility Technician	50.0	50.0	50.0
5301 Inter-Agency Receipts	H&SS - PFD Hold Harmless (225)	Reimbursable Services Agreement between the Public Assistance Field Services component and the Permanent Fund Dividend (PFD) Hold Harmless component. The PFD Hold Harmless component provides the administrative funding for the public assistance maintenance work impacted by clients receiving the Alaska Permanent Fund Dividend.	2,224.5	2,250.0	2,259.0
5108 Stat Desig (1108 Stat Desig)			0.0	145.3	146.0
5204 Statutory Dsgntd Prgm Rcpts Hlth & Hmn Svcs - Chrsg for Svcs		State personnel outstationed for tribal Medicaid support at the Alaska Native Medical Center.	0.0	145.3	146.0
6003 G/F Match (1003 G/F Match)			0.0	17,736.5	21,931.9
6103 Match - Miscellaneous		general fund match authority	0.0	17,736.5	21,931.9

Inter-Agency Services (1682)
Department of Health and Social Services

Component: Public Assistance Field Services (236)

	FY2019 Actuals	FY2020 Management Plan	FY2021 Governor
Component Totals	7,160.6	7,771.4	7,101.8
With Department of Administration	3,998.2	4,388.1	4,019.8
With Department of Health and Social Services	2,759.4	3,115.5	2,766.5
With Legislature	0.1	0.0	0.0
With Department of Transportation/Public Facilities	43.4	0.0	44.5
With Department of Law	12.4	7.8	13.0
With Department of Labor and Workforce Development	257.1	260.0	258.0
With Department of Revenue	90.0	0.0	0.0

Object Class	Servicing Agency	Explanation	FY2019 Actuals	FY2020 Management Plan	FY2021 Governor
3017 Inter-Agency Information Technology Non-Telecommunications	Admin - Department-wide	Reimbursable Services Agreement for Management Information Computer Systems, Reimbursable Services Agreement for Office of Information Technology Core Services, Reimbursable Services Agreement for Alaska's Resource for Integrated Eligibility Services Server Hosting, Microsoft License Chargeback	3,281.8	0.0	3,300.0
3017 Inter-Agency Information Technology Non-Telecommunications	H&SS - Information Technology Services (2754)	Reimbursable Services Agreement for business applications support.	2,242.0	2,564.5	2,250.0
3017 Inter-Agency Information Technology Non-Telecommunications	H&SS - Public Assistance Field Svcs (236)		35.1	0.0	0.0
3017 Inter-Agency Information Technology Non-Telecommunications	Admin - Department-wide	Reimbursable Services Agreement for Mainframe Information Control System support.	0.0	3,100.7	0.0
3018 Inter-Agency Information Technology Telecommunications	Admin - Department-wide	Telephone Services for field services offices. Reimbursable Services Agreement with Department of Administration,	167.6	168.0	170.0

Inter-Agency Services (1682)
Department of Health and Social Services

Component: Public Assistance Field Services (236)

Object Class		Servicing Agency	Explanation	FY2019 Actuals	FY2020 Management Plan	FY2021 Governor
			Enterprise Technology Services for Telecommunication.			
3018	Inter-Agency Information Technology Telecommunications	Legis - Department-wide		0.1	0.0	0.0
3019	Inter-Agency Storage	H&SS - Public Assistance Field Svcs (236)	Storage	0.5	0.0	0.5
3021	Inter-Agency Mail	Admin - Department-wide	Reimbursable Services Agreement for central mail services.	62.3	55.0	63.0
3022	Inter-Agency Human Resources	Admin - Department-wide	Reimbursable Services Agreement with Department of Administration for Human Resources.	311.8	311.7	312.0
3023	Inter-Agency Building Leases	Trans - Department-wide	Disposal	13.5	0.0	13.5
3024	Inter-Agency Legal	Law - Department-wide	Reimbursable Services Agreement for regulation review and Health Insurance Portability and Accountability Act compliance.	12.4	7.8	13.0
3025	Inter-Agency Auditing	H&SS - Administrative Support Svcs (320)	Reimbursable Services Agreement for audit support.	0.0	18.2	8.0
3026	Inter-Agency Insurance	Admin - Department-wide	Reimbursable Services Agreement with the Department of Administration Risk Management for insurance.	30.7	30.0	31.0
3027	Inter-Agency Financial	Admin - Department-wide	Reimbursable Services Agreement for Integrated Resource Information System (IRIS) financial, IRIS payroll, and Alaska Data Enterprise Reporting.	119.7	178.5	120.0
3028	Inter-Agency Americans with Disabilities Act Compliance	Admin - Department-wide	Reimbursable Services Agreement for Americans with Disabilities Act compliance services.	3.2	3.2	3.5
3030	Inter-Agency Hearing/Mediation	Admin - Department-wide		0.8	0.0	0.0
3032	Inter-Agency Health	H&SS - Bureau of Vital Statistics (961)	Reimbursable Services Agreement with Division of Public Health's Bureau of Vital Statistics.	30.0	40.0	40.0

Inter-Agency Services (1682)
Department of Health and Social Services

Component: Public Assistance Field Services (236)

Object Class	Servicing Agency	Explanation	FY2019 Actuals	FY2020 Management Plan	FY2021 Governor
3037 State Equipment Fleet	Trans - Department-wide	Fuel and vehicle service charges	29.9	0.0	31.0
3038 Inter-Agency Management/Consulting	Admin - Department-wide	Shared Services Chargeback. Reimbursable Services Agreement for Population Estimates Demographic Support.	20.3	0.0	20.3
3038 Inter-Agency Management/Consulting	H&SS - Administrative Support Svcs (320)	Computer Refresh	199.5	335.0	200.0
3038 Inter-Agency Management/Consulting	H&SS - Commissioner's Office (317)	Commissioner's Office Chargeback	23.5	0.0	34.0
3038 Inter-Agency Management/Consulting	H&SS - Public Affairs (2874)	Reimbursable Services Agreement for Public Affairs	72.9	0.0	76.0
3038 Inter-Agency Management/Consulting	H&SS - Senior/Disabilities Svcs Admin (2663)	Reimbursable Services Agreement for Tax Equity and Fiscal Responsibility Act (TEFRA).	155.9	0.0	158.0
3038 Inter-Agency Management/Consulting	Labor - Department-wide	Reimbursable Services Agreement with the Disability Determination Services (under Dept of Labor VOC Rehab) for the state only disability determinations for Medicaid applicants who need a disability decision as part of Medicaid eligibility. Reimbursable Services Agreement for Alaska Workforce Investment Board.	257.1	0.0	258.0
3038 Inter-Agency Management/Consulting	Rev - Department-wide		90.0	0.0	0.0
3038 Inter-Agency Management/Consulting	Labor - Department-wide		0.0	260.0	0.0
3038 Inter-Agency Management/Consulting	Admin - Department-wide		0.0	541.0	0.0
3038 Inter-Agency Management/Consulting	H&SS - Senior/Disabilities Svcs Admin (2663)		0.0	157.8	0.0

Personal Services Expenditure Detail
Department of Health and Social Services

Scenario: FY2021 Governor (16414)
Component: Public Assistance Field Services (236)
RDU: Public Assistance (73)

PCN	Job Class Title	Time Status	Retire Code	Barg Unit	Location	Salary Sched	Range / Step	Comp Months	Split / Count	Annual Salaries	COLA	Premium Pay	Annual Benefits	Total Costs	UGF Amount
02-7625	Training Specialist II	FT	A	GP	Anchorage	200	18B / C	12.0		62,296	848	0	41,254	104,398	53,661
05-2317	Public Assistance Analyst I	FT	A	GG	Anchorage	99	16N / N	12.0		74,856	1,018	0	45,783	121,657	61,558
05-8711	Emp Svc Tech II	FT	A	GP	Kenai	200	15B	12.0		66,636	907	0	42,819	110,362	0
06-1030	Public Assistance Analyst I	FT	A	GP	Anchorage	200	16M	12.0		72,504	986	0	44,935	118,425	59,923
06-2041	Office Assistant I	FT	A	GP	Anchorage	200	8B / C	12.0		32,076	436	0	30,357	62,869	31,812
06-3901	Eligibility Technician II	FT	A	GP	Juneau	205	14E / F	12.0		54,504	742	0	38,444	93,690	47,407
06-4938	Eligibility Technician II	FT	A	GP	Anchorage	200	14E / F	12.0		59,772	813	0	40,344	100,929	0
06-4939	Office Assistant I	FT	A	GP	Anchorage	200	8B / C	12.0		31,992	435	0	30,327	62,754	31,754
06-8003	Public Assistance Analyst II	FT	A	GP	Anchorage	200	18J / K	12.0		77,736	1,058	0	46,822	125,616	63,562
06-8024	Office Assistant I	FT	A	GP	Anchorage	200	8B / C	12.0		32,748	446	0	30,599	63,793	34,193
06-8025	Office Assistant I	FT	A	GP	Fairbanks	203	8B / C	12.0		32,913	448	0	30,659	64,020	32,394
06-8031	Eligibility Technician II	FT	A	GP	Bethel	250	14C / D	12.0		74,232	1,010	0	45,558	120,800	61,125
06-8032	Office Assistant IV	FT	A	SS	Ketchikan	600	12C / D	12.0		45,624	0	0	35,282	80,906	40,938
06-8033	Eligibility Technician II	FT	A	GP	Anchorage	200	14K / L	12.0		59,292	807	0	40,171	100,270	50,737
06-8034	Eligibility Technician II	FT	A	GP	Nome	237	14F / G	12.0		74,028	1,007	0	45,485	120,520	60,983
06-8035	Eligibility Technician II	FT	A	GP	Ketchikan	200	14B / C	12.0		46,997	639	0	35,737	83,373	42,187
06-8036	Eligibility Technician II	FT	A	GG	Fairbanks	203	14L	12.0		62,796	854	0	41,435	105,085	53,173
06-8037	Eligibility Office Manager II	FT	A	SS	Ketchikan	200	19C / D	12.0		73,816	0	0	45,448	119,264	60,348
06-8038	Eligibility Technician II	FT	A	GP	Kenai	200	14E / F	12.0		51,664	703	0	37,420	89,787	45,432
06-8039	Eligibility Office Manager II	FT	A	SS	Juneau	205	19C / D	12.0		77,751	0	0	46,867	124,618	63,057
06-8040	Eligibility Technician IV	FT	A	SS	Fairbanks	203	17E	12.0		70,356	0	0	44,201	114,557	57,966
06-8041	Pb Asst Fsm I	FT	A	SS	Wasilla	200	19E / F	12.0		79,205	0	0	47,392	126,597	64,058
06-8042	Pb Asst Fsmii	FT	A	SS	Fairbanks	203	21C / D	12.0		88,992	0	0	50,921	139,913	70,796
06-8043	Eligibility Technician IV	FT	A	SS	Anchorage	200	17C / D	12.0		66,108	0	0	42,669	108,777	55,041
06-8044	Eligibility Technician II	FT	A	GP	Juneau	205	14C / D	12.0		51,650	703	0	37,415	89,768	45,423
06-8045	Eligibility Technician II	FT	A	GP	Fairbanks	203	14C / D	12.0		50,594	688	0	37,035	88,317	44,688
06-8046	Eligibility Technician II	FT	A	GP	Sitka	205	14A / B	12.0		48,456	659	0	36,264	85,379	43,202
06-8049	Office Assistant II	FT	A	GP	Sitka	205	10B / C	12.0		38,952	530	0	32,836	72,318	36,593
06-8050	Eligibility Office Manager II	FT	A	SS	Kenai	99	19Q / Q	12.0		108,077	0	0	57,803	165,880	83,935
06-8051	Eligibility Technician II	FT	A	GP	Fairbanks	203	14C / D	12.0		49,752	677	0	36,731	87,160	44,103
06-8054	Eligibility Technician II	FT	A	GP	Kenai	200	14B / C	12.0		47,192	642	0	35,808	83,642	42,323
06-8055	Eligibility Technician II	FT	A	GP	Fairbanks	203	14B / C	12.0		47,934	652	0	36,075	84,661	42,839
06-8057	Eligibility Technician III	FT	A	GP	Fairbanks	203	16F / G	12.0		64,165	873	0	41,928	106,966	54,125
06-8059	Eligibility Technician II	FT	A	GP	Anchorage	200	14C / D	12.0		48,082	654	0	36,129	84,865	42,942
06-8060	Eligibility Technician III	FT	A	GP	Anchorage	200	16G / J	12.0		65,117	886	0	42,272	108,275	54,787
06-8061	Eligibility Technician II	FT	A	GP	Anchorage	200	14B / C	12.0		46,932	639	0	35,714	83,285	42,142
06-8062	Eligibility Technician III	FT	A	GP	Anchorage	99	16O / P	12.0		76,884	1,046	0	46,515	124,445	62,969
06-8063	Eligibility Technician IV	FT	A	SS	Ketchikan	200	17E / F	12.0		70,604	0	0	44,290	114,894	58,136

Note: If a position is split, an asterisk (*) will appear in the Split/Count column. If the split position is also counted in the component, two asterisks (**) will appear in this column.
 [No valid job title] appearing in the Job Class Title indicates that the PCN has an invalid class code or invalid range for the class code effective date of this scenario.

Personal Services Expenditure Detail
Department of Health and Social Services

Scenario: FY2021 Governor (16414)
Component: Public Assistance Field Services (236)
RDU: Public Assistance (73)

PCN	Job Class Title	Time Status	Retire Code	Barg Unit	Location	Salary Sched	Range / Step	Comp Months	Split / Count	Annual Salaries	COLA	Premium Pay	Annual Benefits	Total Costs	UGF Amount
06-8064	Public Assistance Analyst II	FT	A	GP	Anchorage	99	18M / N	12.0		81,624	1,111	0	48,224	130,959	66,265
06-8066	Administrative Assistant II	FT	A	GP	Wasilla	200	14B / C	12.0		46,217	629	0	35,456	82,302	44,114
06-8067	Office Assistant I	FT	A	GG	Fairbanks	203	8A / B	12.0		32,784	446	0	30,612	63,842	32,304
06-8068	Pb Asst Fsmii	FT	A	SS	Anchorage	99	21Q / R	12.0		118,810	0	0	61,673	180,483	91,324
06-8072	Eligibility Technician IV	FT	A	SS	Anchorage	200	17C / D	12.0		66,014	0	0	42,635	108,649	54,976
06-8073	Eligibility Technician III	FT	A	GP	Anchorage	200	16J	12.0		65,880	896	0	42,547	109,323	55,317
06-8077	Administrative Assistant II	FT	A	GP	Anchorage	99	14L / M	12.0		62,184	846	0	41,214	104,244	55,875
06-8078	Eligibility Technician II	FT	A	GP	Fairbanks	203	14J / K	12.0		60,428	822	0	40,581	101,831	51,527
06-8079	Eligibility Technician II	FT	A	GP	Bethel	250	14B / C	12.0		71,568	974	0	44,598	117,140	59,273
06-8081	Eligibility Office Manager II	FT	A	SS	Anchorage	200	19F / J	12.0		81,655	0	0	48,275	129,930	65,745
06-8084	Eligibility Technician III	FT	A	GG	Wasilla	99	16Q / R	12.0		82,752	1,126	0	48,631	132,509	67,050
06-8085	Eligibility Technician II	FT	A	GP	Juneau	205	14B / C	12.0		49,621	675	0	36,684	86,980	44,012
06-8086	Office Assistant I	FT	A	GP	Juneau	205	8C / D	12.0		34,654	472	0	31,287	66,413	33,605
06-8087	Eligibility Technician II	FT	A	GP	Ketchikan	200	14E / F	12.0		52,464	714	0	37,709	90,887	45,989
06-8089	Eligibility Technician II	FT	A	GP	Fairbanks	203	14B / C	12.0		48,403	659	0	36,244	85,306	43,165
06-8090	Eligibility Technician II	FT	A	GP	Bethel	250	14B / C	12.0		70,203	955	0	44,106	115,264	58,324
06-8091	Eligibility Technician II	FT	A	GP	Anchorage	200	14J	12.0		57,192	778	0	39,414	97,384	49,276
06-8098	Eligibility Technician IV	FT	A	SS	Wasilla	200	17D / E	12.0		67,664	0	0	43,230	110,894	56,112
06-8099	Eligibility Technician III	FT	A	GP	Anchorage	200	16C / D	12.0		55,490	755	0	38,800	95,045	48,093
06-8100	Eligibility Technician II	FT	A	GP	Wasilla	200	14B / C	12.0		46,607	634	0	35,597	82,838	41,916
06-8101	Eligibility Technician II	FT	A	GP	Anchorage	200	14B / C	12.0		46,607	634	0	35,597	82,838	41,916
06-8102	Eligibility Technician II	FT	A	GP	Anchorage	200	14C / D	12.0		48,600	661	0	36,315	85,576	43,302
06-8103	Eligibility Technician II	FT	A	GP	Wasilla	200	14L	12.0		60,972	830	0	40,777	102,579	51,905
06-8105	Public Assistance Analyst II	FT	A	GP	Anchorage	200	18D / E	12.0		67,224	915	0	43,031	111,170	56,252
06-8106	Eligibility Technician III	FT	A	GP	Wasilla	200	16G / J	12.0		64,136	873	0	41,918	106,927	54,105
06-8107	Office Assistant II	FT	A	GP	Anchorage	200	10D / E	12.0		39,264	534	0	32,949	72,747	38,992
06-8109	Office Assistant II	FT	A	GP	Wasilla	200	10D / E	12.0		38,888	529	0	32,813	72,230	36,548
06-8110	Office Assistant I	FT	A	GP	Anchorage	200	8A / B	12.0		31,187	424	0	30,036	61,647	31,193
06-8111	Eligibility Technician III	FT	A	GP	Anchorage	200	16C / D	12.0		58,352	794	0	39,832	98,978	50,083
06-8112	Office Assistant I	FT	A	GP	Anchorage	200	8C / D	12.0		33,045	450	0	30,706	64,201	32,486
06-8113	Office Assistant II	FT	A	GP	Anchorage	200	10C / D	12.0		38,136	519	0	32,542	71,197	38,162
06-8114	Eligibility Technician III	FT	A	GP	Ketchikan	200	16D / E	12.0		57,302	780	0	39,453	97,535	49,353
06-8115	Eligibility Technician III	FT	A	GP	Juneau	205	16J	12.0		69,180	941	0	43,737	113,858	57,612
06-8116	Eligibility Technician II	FT	A	GP	Anchorage	200	14D / E	12.0		49,562	674	0	36,662	86,898	43,970
06-8117	Eligibility Technician III	FT	A	GP	Anchorage	200	16J	12.0		65,880	896	0	42,547	109,323	55,317
06-8118	Eligibility Technician III	FT	A	GP	Fairbanks	203	16C / D	12.0		58,656	798	0	39,942	99,396	50,294
06-8119	Eligibility Technician III	FT	A	GP	Juneau	205	16B / C	12.0		57,338	780	0	39,466	97,584	49,378
06-8120	Eligibility Technician III	FT	A	GP	Bethel	250	16N	12.0		112,284	1,528	0	59,280	173,092	87,585

Note: If a position is split, an asterisk (*) will appear in the Split/Count column. If the split position is also counted in the component, two asterisks (**) will appear in this column.
 [No valid job title] appearing in the Job Class Title indicates that the PCN has an invalid class code or invalid range for the class code effective date of this scenario.

Personal Services Expenditure Detail
Department of Health and Social Services

Scenario: FY2021 Governor (16414)
Component: Public Assistance Field Services (236)
RDU: Public Assistance (73)

PCN	Job Class Title	Time Status	Retire Code	Barg Unit	Location	Salary Sched	Range / Step	Comp Months	Split / Count	Annual Salaries	COLA	Premium Pay	Annual Benefits	Total Costs	UGF Amount
06-8121	Chf Pub Asst Fo	FT	A	SS	Anchorage	200	22F / J	12.0		100,978	0	0	55,243	156,221	79,048
06-8124	Public Asst P/O	FT	A	SS	Anchorage	200	21E / F	12.0		89,847	0	0	51,229	141,076	0
06-8128	Office Assistant I	FT	A	GP	Anchorage	200	8D / E	12.0		34,267	466	0	31,147	65,880	33,335
06-8139	Eligibility Technician II	FT	A	GP	Wasilla	200	14K	12.0		59,052	803	0	40,084	99,939	50,569
06-8140	Eligibility Technician I	FT	A	GP	Juneau	205	13B / C	12.0		45,342	617	0	35,141	81,100	0
06-8141	Eligibility Technician II	FT	A	GP	Anchorage	200	14D / E	12.0		51,116	695	0	37,223	89,034	45,051
06-8143	Office Assistant I	FT	A	GP	Wasilla	200	8A / B	12.0		31,824	433	0	30,266	62,523	31,637
06-8145	Eligibility Technician II	FT	A	GP	Kodiak	211	14J	12.0		63,480	864	0	41,681	106,025	53,649
06-8150	Eligibility Technician II	FT	A	GP	Fairbanks	203	14C	12.0		49,140	669	0	36,510	86,319	43,677
06-8159	Administrative Assistant II	FT	A	GP	Anchorage	200	14B / C	12.0		47,322	644	0	35,855	83,821	42,413
06-8161	Office Assistant IV	FT	A	SS	Bethel	99	12N / N	12.0		88,733	0	0	50,827	139,560	70,617
06-8162	Eligibility Technician II	FT	A	GP	Fairbanks	203	14B / C	12.0		48,336	658	0	36,220	85,214	43,118
06-8165	Training Specialist III	FT	A	SS	Anchorage	200	20C / D	12.0		78,964	0	0	47,305	126,269	63,892
06-8168	Eligibility Technician III	FT	A	GP	Ketchikan	200	16L	12.0		70,224	955	0	44,113	115,292	58,338
06-8169	Eligibility Office Manager II	FT	A	SS	Anchorage	200	19C / D	12.0		75,672	0	0	46,118	121,790	61,626
06-8171	Eligibility Technician III	FT	A	GP	Wasilla	200	16F / G	12.0		61,328	834	0	40,905	103,067	52,152
06-8172	Eligibility Technician IV	FT	A	SS	Wasilla	200	17D / E	12.0		66,383	0	0	42,768	109,151	55,230
06-8173	Eligibility Technician III	FT	A	GP	Anchorage	200	16B / C	12.0		53,539	728	0	38,096	92,363	46,736
06-8174	Eligibility Technician II	FT	A	GP	Anchorage	200	14B / C	12.0		47,712	649	0	35,995	84,356	42,684
06-8175	Eligibility Technician II	FT	A	GP	Wasilla	200	14A / B	12.0		46,152	628	0	35,433	82,213	41,600
06-8176	Eligibility Technician II	FT	A	GP	Anchorage	200	14J	12.0		57,192	778	0	39,414	97,384	49,276
06-8177	Eligibility Technician II	FT	A	GP	Eagle River	200	14G / J	12.0		55,080	749	0	38,652	94,481	47,807
06-8179	Eligibility Technician III	FT	A	GP	Fairbanks	203	16C / D	12.0		58,656	798	0	39,942	99,396	50,294
06-8180	Eligibility Technician IV	FT	A	SS	Wasilla	200	17L	12.0		77,832	0	0	46,896	124,728	63,112
06-8181	Eligibility Technician III	FT	A	GP	Kenai	200	16J / K	12.0		66,058	899	0	42,611	109,568	55,441
06-8182	Eligibility Technician II	FT	A	GP	Fairbanks	203	14B / C	12.0		49,006	667	0	36,462	86,135	43,584
06-8183	Eligibility Technician II	FT	A	GP	Juneau	205	14B / C	12.0		48,593	661	0	36,313	85,567	43,297
06-8184	Eligibility Technician III	FT	A	GP	Anchorage	99	16Q / Q	12.0		82,752	1,126	0	48,631	132,509	67,050
06-8185	Pb Asst Fsmii	FT	A	SS	Ketchikan	200	21C / D	12.0		84,594	0	0	49,335	133,929	67,768
06-8196	Eligibility Technician II	FT	A	GP	Juneau	205	14C / D	12.0		50,643	689	0	37,052	88,384	44,722
06-8200	Eligibility Technician II	FT	A	GP	Anchorage	200	14L	12.0		60,972	830	0	40,777	102,579	51,905
06-8201	Eligibility Technician IV	FT	A	SS	Wasilla	99	17S	12.0		101,171	0	0	55,313	156,484	79,181
06-8202	Eligibility Technician II	FT	A	GP	Anchorage	200	14J	12.0		57,192	778	0	39,414	97,384	49,276
06-8203	Eligibility Technician II	FT	A	GP	Fairbanks	203	14A / B	12.0		47,532	647	0	35,930	84,109	42,559
06-8204	Eligibility Technician II	FT	A	GP	Kenai	200	14J	12.0		57,192	778	0	39,414	97,384	49,276
06-8205	Eligibility Technician II	FT	A	GP	Fairbanks	203	14B / C	12.0		48,939	666	0	36,438	86,043	43,538
06-8207	Office Assistant IV	FT	A	SS	Kenai	600	12D / E	12.0		46,479	0	0	35,591	82,070	43,990
06-8208	Office Assistant IV	FT	A	SS	Fairbanks	603	12K / L	12.0		56,064	0	0	39,047	95,111	48,126

Note: If a position is split, an asterisk (*) will appear in the Split/Count column. If the split position is also counted in the component, two asterisks (**) will appear in this column. [No valid job title] appearing in the Job Class Title indicates that the PCN has an invalid class code or invalid range for the class code effective date of this scenario.

Personal Services Expenditure Detail
Department of Health and Social Services

Scenario: FY2021 Governor (16414)
Component: Public Assistance Field Services (236)
RDU: Public Assistance (73)

PCN	Job Class Title	Time Status	Retire Code	Barg Unit	Location	Salary Sched	Range / Step	Comp Months	Split / Count	Annual Salaries	COLA	Premium Pay	Annual Benefits	Total Costs	UGF Amount
06-8210	Training Specialist II	FT	A	GP	Juneau	205	18C / D	12.0		68,700	935	0	43,564	113,199	57,279
06-8212	Eligibility Technician I	FT	A	GP	Juneau	205	13K	12.0		57,900	788	0	39,669	98,357	0
06-8217	Eligibility Technician I	PT	A	GP	Juneau	205	13B / C	9.0		35,145	478	0	26,766	62,389	0
06-8219	Eligibility Technician I	PT	A	GP	Juneau	205	13E / F	9.0		38,970	530	0	28,145	67,645	0
06-8220	Eligibility Technician I	PT	A	GP	Juneau	205	13G	9.0		40,374	549	0	28,652	69,575	0
06-8225	Eligibility Technician II	FT	A	GP	Wasilla	200	14G	12.0		54,888	747	0	38,583	94,218	47,674
06-8226	Eligibility Technician II	FT	A	GP	Anchorage	200	14J / K	12.0		57,735	786	0	39,610	98,131	49,654
06-8227	Eligibility Technician II	FT	A	GP	Kenai	200	14C	12.0		64,344	875	0	41,993	107,212	54,249
06-8228	Eligibility Technician II	FT	A	GP	Wasilla	200	14C / D	12.0		47,786	650	0	36,022	84,458	42,736
06-8229	Eligibility Technician II	FT	A	GP	Anchorage	200	14B / C	12.0		47,322	644	0	35,855	83,821	42,413
06-8230	Eligibility Technician II	FT	A	GP	Nome	237	14B / C	12.0		64,474	877	0	42,040	107,391	54,340
06-8231	Eligibility Technician II	FT	A	GP	Wasilla	200	14E / F	12.0		51,744	704	0	37,449	89,897	45,488
06-8235	Eligibility Office Manager II	FT	A	SS	Fairbanks	203	19D / E	12.0		78,540	0	0	47,152	125,692	63,600
06-8236	Eligibility Technician II	FT	A	GP	Fairbanks	99	14O / O	12.0		68,340	930	0	43,434	112,704	57,028
06-8237	Office Assistant I	FT	A	GP	Wasilla	200	8C / D	12.0		33,767	459	0	30,967	65,193	32,988
06-8238	Office Assistant I	FT	A	GP	Wasilla	200	8F / G	12.0		36,638	499	0	32,002	69,139	34,984
06-8239	Eligibility Technician II	FT	A	GP	Anchorage	200	14B / C	12.0		47,582	647	0	35,948	84,177	42,594
06-8242	Eligibility Technician II	FT	A	GP	Anchorage	200	14E / F	12.0		51,744	704	0	37,449	89,897	45,488
06-8243	Office Assistant II	FT	A	GP	Juneau	205	10C / D	12.0		39,225	534	0	32,935	72,694	36,783
06-8244	Eligibility Technician II	FT	A	GP	Anchorage	200	14A / B	12.0		46,152	628	0	35,433	82,213	41,600
06-8245	Eligibility Technician II	FT	A	GP	Anchorage	200	14D / E	12.0		50,006	680	0	36,822	87,508	44,279
06-8247	Office Assistant IV	FT	A	SS	Anchorage	600	12B / C	12.0		44,544	0	0	34,893	79,437	40,195
06-8248	Office Assistant I	FT	A	GP	Anchorage	200	8K / L	12.0		40,644	553	0	33,447	74,644	37,770
06-8251	Eligibility Technician II	FT	A	GP	Wasilla	200	14B / C	12.0		46,477	632	0	35,550	82,659	41,826
06-8252	Eligibility Technician II	FT	A	GP	Ketchikan	200	14B / C	12.0		46,347	631	0	35,503	82,481	41,735
06-8253	Eligibility Technician II	FT	A	GP	Anchorage	200	14B / C	12.0		46,217	629	0	35,456	82,302	41,645
06-8257	Eligibility Technician II	FT	A	GP	Anchorage	200	14E / F	12.0		51,344	699	0	37,305	89,348	45,210
06-8258	Eligibility Technician II	FT	A	GP	Anchorage	200	14B / C	12.0		46,542	633	0	35,573	82,748	41,871
06-8259	Eligibility Technician II	FT	A	GP	Anchorage	200	14E / F	12.0		51,344	699	0	37,305	89,348	45,210
06-8260	Eligibility Technician II	FT	A	GP	Fairbanks	203	14M	12.0		64,836	882	0	42,170	107,888	54,591
06-8261	Eligibility Technician II	FT	A	GP	Fairbanks	203	14B / C	12.0		48,872	665	0	36,414	85,951	43,491
06-8264	Office Assistant I	FT	A	GP	Anchorage	200	8B / C	12.0		31,866	434	0	30,281	62,581	31,666
06-8265	Office Assistant IV	FT	A	SS	Anchorage	600	12B / C	12.0		44,544	0	0	34,893	79,437	42,578
06-8266	Office Assistant I	FT	A	GP	Anchorage	200	8C / D	12.0		33,045	450	0	30,706	64,201	34,412
06-8267	Office Assistant II	FT	A	GP	Anchorage	200	10D / E	12.0		38,183	520	0	32,559	71,262	36,059
06-8268	Office Assistant I	FT	A	GP	Anchorage	200	8F / G	12.0		35,931	489	0	31,747	68,167	34,493
06-8269	Eligibility Technician IV	FT	A	SS	Anchorage	200	17C / D	12.0		65,826	0	0	42,567	108,393	54,847
06-8271	Office Assistant I	FT	A	GP	Anchorage	200	8B / C	12.0		32,832	447	0	30,630	63,909	32,338

Note: If a position is split, an asterisk (*) will appear in the Split/Count column. If the split position is also counted in the component, two asterisks (**) will appear in this column. [No valid job title] appearing in the Job Class Title indicates that the PCN has an invalid class code or invalid range for the class code effective date of this scenario.

Personal Services Expenditure Detail
Department of Health and Social Services

Scenario: FY2021 Governor (16414)
Component: Public Assistance Field Services (236)
RDU: Public Assistance (73)

PCN	Job Class Title	Time Status	Retire Code	Barg Unit	Location	Salary Sched	Range / Step	Comp Months	Split / Count	Annual Salaries	COLA	Premium Pay	Annual Benefits	Total Costs	UGF Amount
06-8272	Administrative Assistant II	FT	A	GP	Anchorage	200	14C / D	12.0		48,822	664	0	36,396	85,882	43,456
06-8273	Office Assistant I	FT	A	GP	Anchorage	200	8C / D	12.0		33,002	449	0	30,691	64,142	34,380
06-8274	Office Assistant I	FT	A	GP	Ketchikan	200	8C / D	12.0		33,555	457	0	30,890	64,902	34,788
06-8275	Administrative Assistant II	FT	A	GP	Fairbanks	203	14G	12.0		56,532	769	0	39,176	96,477	48,817
06-8276	Office Assistant II	FT	A	GP	Fairbanks	203	10E / F	12.0		40,749	554	0	33,484	74,787	37,842
06-8277	Office Assistant II	FT	A	GP	Anchorage	200	10J	12.0		43,560	593	0	34,498	78,651	39,797
06-8278	Eligibility Technician II	FT	A	GP	Anchorage	200	14C / D	12.0		48,822	664	0	36,396	85,882	43,456
06-8279	Office Assistant I	FT	A	GP	Fairbanks	203	8C / D	12.0		34,872	474	0	31,365	66,711	33,756
06-8280	Office Assistant II	FT	A	GP	Nome	237	10D / E	12.0		52,442	714	0	37,701	90,857	45,974
06-8281	Office Assistant I	FT	A	GP	Fairbanks	203	8C / D	12.0		34,168	465	0	31,111	65,744	33,267
06-8282	Office Assistant I	FT	A	GP	Anchorage	200	8B / C	12.0		32,664	444	0	30,569	63,677	32,221
06-8284	Eligibility Technician II	FT	A	GP	Wasilla	200	14D / E	12.0		50,080	681	0	36,849	87,610	44,331
06-8285	Eligibility Technician II	FT	A	GP	Kenai	200	14G / J	12.0		57,000	776	0	39,345	97,121	49,143
06-8286	Eligibility Technician II	FT	A	GP	Kenai	200	14K / L	12.0		60,172	819	0	40,488	101,479	51,348
06-8287	Eligibility Technician II	FT	A	GP	Kenai	200	14L	12.0		60,972	830	0	40,777	102,579	51,905
06-8288	Office Assistant I	FT	A	GP	Kenai	200	8D / E	12.0		34,018	463	0	31,057	65,538	33,162
06-8289	Office Assistant I	FT	A	GP	Kenai	200	8G / J	12.0		37,924	516	0	32,466	70,906	35,878
06-8290	Eligibility Technician I	PT	A	GP	Juneau	205	13D / E	9.0		36,548	497	0	27,272	64,317	0
06-8291	Eligibility Technician I	PT	A	GP	Juneau	205	13J	9.0		42,057	572	0	29,258	71,887	0
06-8292	Eligibility Technician I	PT	A	GP	Juneau	205	13C	9.0		35,145	478	0	26,766	62,389	0
06-8293	Eligibility Technician I	PT	A	GP	Juneau	205	13K / L	9.0		44,751	609	0	30,230	75,590	0
06-8294	Office Assistant II	FT	A	GP	Juneau	205	10C / D	12.0		39,999	544	0	33,214	73,757	37,321
06-8295	Eligibility Technician II	FT	A	GP	Anchorage	200	14K / L	12.0		59,612	811	0	40,286	100,709	50,959
06-8299	Eligibility Technician II	FT	A	GP	Anchorage	200	14A / B	12.0		46,152	628	0	35,433	82,213	41,600
06-8300	Eligibility Technician II	FT	A	GP	Anchorage	200	14B / C	12.0		46,347	631	0	35,503	82,481	41,735
06-8301	Eligibility Technician II	FT	A	GP	Anchorage	200	14B / C	12.0		46,607	634	0	35,597	82,838	41,916
06-8302	Eligibility Technician II	FT	A	GP	Anchorage	200	14G / J	12.0		55,944	761	0	38,964	95,669	48,409
06-8303	Eligibility Office Manager I	FT	A	SS	Bethel	250	18M / N	12.0		129,510	0	0	65,532	195,042	98,691
06-8304	Eligibility Technician IV	FT	A	SS	Anchorage	200	17S / T	12.0		97,763	0	0	54,084	151,847	76,835
06-8305	Eligibility Technician II	FT	A	GP	Anchorage	200	14G	12.0		54,888	747	0	38,583	94,218	47,674
06-8307	Eligibility Technician II	FT	A	GP	Anchorage	200	14A / B	12.0		46,152	628	0	35,433	82,213	41,600
06-8308	Training Specialist II	FT	A	GP	Anchorage	200	18D / E	12.0		65,604	893	0	42,447	108,944	55,126
06-8309	Training Specialist II	FT	A	GP	Anchorage	200	18K	12.0		77,736	1,058	0	46,822	125,616	63,562
06-8310	Eligibility Technician II	FT	A	GP	Anchorage	200	14E / F	12.0		51,344	699	0	37,305	89,348	45,210
06-8311	Eligibility Technician II	FT	A	GP	Anchorage	200	14B / C	12.0		47,387	645	0	35,878	83,910	42,459
06-8313	Eligibility Technician II	FT	A	GP	Wasilla	200	14C / D	12.0		48,156	655	0	36,155	84,966	42,993
06-8315	Eligibility Technician IV	FT	A	SS	Fairbanks	203	17N / O	12.0		88,774	0	0	50,842	139,616	70,646
06-8316	Eligibility Technician III	FT	A	GP	Fairbanks	203	16G / J	12.0		65,273	888	0	42,328	108,489	54,895

Note: If a position is split, an asterisk (*) will appear in the Split/Count column. If the split position is also counted in the component, two asterisks (**) will appear in this column.
[No valid job title] appearing in the Job Class Title indicates that the PCN has an invalid class code or invalid range for the class code effective date of this scenario.

Personal Services Expenditure Detail
Department of Health and Social Services

Scenario: FY2021 Governor (16414)
Component: Public Assistance Field Services (236)
RDU: Public Assistance (73)

PCN	Job Class Title	Time Status	Retire Code	Barg Unit	Location	Salary Sched	Range / Step	Comp Months	Split / Count	Annual Salaries	COLA	Premium Pay	Annual Benefits	Total Costs	UGF Amount
06-8317	Eligibility Technician III	FT	A	GG	Bethel	250	16N / N	12.0		110,616	1,505	0	58,678	170,799	86,424
06-8318	Eligibility Technician II	FT	A	GP	Fairbanks	203	14C / D	12.0		50,517	687	0	37,007	88,211	44,635
06-8319	Eligibility Technician III	FT	A	GP	Anchorage	99	16L / L	12.0		67,888	924	0	43,271	112,083	56,714
06-8320	Eligibility Technician II	FT	A	GP	Kenai	200	14F / G	12.0		54,107	736	0	38,301	93,144	47,131
06-8321	Eligibility Technician II	FT	A	GP	Kenai	200	14F / G	12.0		54,249	738	0	38,353	93,340	47,230
06-8322	Eligibility Technician II	FT	A	GP	Wasilla	200	14K	12.0		59,052	803	0	40,084	99,939	50,569
06-8323	Eligibility Technician II	FT	A	GP	Bethel	250	14G / J	12.0		82,764	1,126	0	48,635	132,525	67,058
06-8324	Eligibility Technician III	FT	A	GP	Ketchikan	200	16D / E	12.0		57,215	778	0	39,422	97,415	49,292
06-8325	Eligibility Technician II	FT	A	GP	Ketchikan	200	14G / J	12.0		56,712	772	0	39,241	96,725	48,943
06-8326	Eligibility Technician II	FT	A	GP	Ketchikan	200	14L	12.0		60,972	830	0	40,777	102,579	51,905
06-8328	Eligibility Technician II	FT	A	GP	Anchorage	200	14B / C	12.0		46,217	629	0	35,456	82,302	41,645
06-8329	Public Assistance Analyst II	FT	A	GP	Anchorage	200	18J	12.0		75,288	1,024	0	45,939	122,251	61,126
06-8330	Office Assistant II	FT	A	GP	Ketchikan	200	10C / D	12.0		37,527	511	0	32,323	70,361	37,714
06-8331	Eligibility Technician IV	FT	A	SS	Kenai	200	17F / J	12.0		72,912	0	0	45,122	118,034	59,725
06-8332	Office Assistant IV	FT	A	SS	Juneau	605	12C / D	12.0		47,844	0	0	36,083	83,927	44,985
06-8333	Eligibility Technician II	FT	A	GP	Anchorage	200	14C / D	12.0		47,860	651	0	36,049	84,560	42,787
06-8334	Office Assistant II	FT	A	GP	Homer	200	10C / D	12.0		37,571	511	0	32,338	70,420	35,633
06-8335	Office Assistant I	FT	A	GG	Fairbanks	99	8P / P	12.0		46,880	638	0	35,695	83,213	42,106
06-8336	Office Assistant I	FT	A	GP	Anchorage	200	8C / D	12.0		33,725	459	0	30,952	65,136	32,959
06-8337	Office Assistant I	FT	A	GP	Ketchikan	200	8B / C	12.0		32,748	446	0	30,599	63,793	34,193
06-8338	Office Assistant I	FT	A	GP	Juneau	205	8C / D	12.0		35,010	476	0	31,415	66,901	33,852
06-8339	Office Assistant III	FT	A	GP	Anchorage	200	11J / K	12.0		46,803	637	0	35,667	83,107	42,052
06-8341	Office Assistant II	FT	A	GP	Wasilla	200	10B / C	12.0		37,092	505	0	32,166	69,763	35,300
06-8342	Office Assistant I	FT	A	GP	Wasilla	200	8D / E	12.0		34,309	467	0	31,162	65,938	33,365
06-8347	Eligibility Technician II	FT	A	GP	Ketchikan	99	14N / N	12.0		63,084	858	0	41,538	105,480	53,373
06-8348	Eligibility Technician II	FT	A	GG	Anchorage	99	14N / N	12.0		49,776	677	0	36,740	87,193	44,120
06-8366	Office Assistant IV	FT	A	SS	Wasilla	600	12A / B	12.0		42,754	0	0	34,247	77,001	38,963
06-8368	Eligibility Technician IV	FT	A	SS	Anchorage	200	17E / F	12.0		68,404	0	0	43,497	111,901	56,622
06-8369	Office Assistant II	FT	A	GP	Bethel	250	10J / K	12.0		66,756	908	0	42,863	110,527	55,927
06-8375	Eligibility Technician II	FT	A	GP	Wasilla	200	14C / D	12.0		47,860	651	0	36,049	84,560	42,787
06-8376	Office Assistant I	FT	A	GP	Anchorage	200	8A / B	12.0		31,562	429	0	30,172	62,163	31,455
06-8377	Eligibility Technician II	FT	A	GP	Wasilla	200	14B / C	12.0		46,672	635	0	35,620	82,927	41,961
06-8378	Eligibility Technician III	FT	A	GG	Wasilla	99	16O / O	12.0		76,884	1,046	0	46,515	124,445	62,969
06-8380	Eligibility Technician II	FT	A	GP	Juneau	205	14C / D	12.0		50,953	693	0	37,164	88,810	44,938
06-8383	Eligibility Technician II	FT	A	GP	Kenai	99	14K / K	12.0		57,324	780	0	39,461	97,565	49,368
06-8384	Eligibility Office Manager II	FT	A	SS	Wasilla	200	19C / D	12.0		73,468	0	0	45,323	118,791	60,108
06-8385	Eligibility Technician III	FT	A	GG	Anchorage	99	16M / M	12.0		71,424	972	0	44,546	116,942	59,173
06-8387	Emp Svc Tech II	FT	A	GG	Fairbanks	203	15O / P	12.0		81,588	1,110	0	48,211	130,909	0

Note: If a position is split, an asterisk (*) will appear in the Split/Count column. If the split position is also counted in the component, two asterisks (**) will appear in this column. [No valid job title] appearing in the Job Class Title indicates that the PCN has an invalid class code or invalid range for the class code effective date of this scenario.

Personal Services Expenditure Detail
Department of Health and Social Services

Scenario: FY2021 Governor (16414)
Component: Public Assistance Field Services (236)
RDU: Public Assistance (73)

PCN	Job Class Title	Time Status	Retire Code	Barg Unit	Location	Salary Sched	Range / Step	Comp Months	Split / Count	Annual Salaries	COLA	Premium Pay	Annual Benefits	Total Costs	UGF Amount
06-8390	Office Assistant II	FT	A	GG	Anchorage	200	10B / C	12.0		37,042	504	0	32,148	69,694	35,265
06-8391	Eligibility Technician II	FT	A	GP	Nome	237	14J	12.0		78,348	1,066	0	47,043	126,457	63,987
06-8392	Eligibility Technician II	FT	A	GP	Anchorage	200	14B / C	12.0		46,542	633	0	35,573	82,748	41,871
06-8399	Public Assistance Analyst II	FT	A	GP	Anchorage	200	18C / D	12.0		65,424	890	0	42,382	108,696	55,000
06-8403	Office Assistant II	FT	A	GP	Kodiak	211	10B / C	12.0		40,668	553	0	33,455	74,676	37,786
06-8404	Eligibility Technician II	FT	A	GP	Juneau	205	14D / E	12.0		52,116	709	0	37,583	90,408	45,746
06-8405	Eligibility Technician II	FT	A	GP	Anchorage	200	14E / F	12.0		52,464	714	0	37,709	90,887	45,989
06-8408	Eligibility Technician II	FT	A	GP	Fairbanks	203	14B / C	12.0		47,867	651	0	36,051	84,569	42,792
06-8409	Eligibility Technician II	FT	A	GP	Anchorage	200	14F / G	12.0		53,539	728	0	38,096	92,363	46,736
06-8414	Public Assistance Analyst I	FT	A	GP	Anchorage	200	16G / J	12.0		69,963	952	0	44,019	114,934	58,157
06-8416	Eligibility Technician II	FT	A	GP	Anchorage	200	14C / D	12.0		48,230	656	0	36,182	85,068	43,044
06-8417	Eligibility Technician III	FT	A	GP	Kenai	200	16E / F	12.0		60,015	817	0	40,432	101,264	51,240
06-8418	Eligibility Technician II	FT	A	GP	Anchorage	200	14C / D	12.0		48,008	653	0	36,102	84,763	42,890
06-8419	Eligibility Technician III	FT	A	GP	Anchorage	200	16G / J	12.0		65,880	896	0	42,547	109,323	55,317
06-8420	Eligibility Technician II	FT	A	GP	Fairbanks	203	14K / L	12.0		61,976	843	0	41,139	103,958	52,603
06-8421	Eligibility Technician II	FT	A	GP	Bethel	99	14M	12.0		96,516	1,313	0	53,594	151,423	76,620
06-8422	Training Specialist II	FT	A	GP	Anchorage	200	18F / G	12.0		70,752	963	0	44,303	116,018	58,705
06-8423	Eligibility Technician II	FT	A	GP	Wasilla	200	14C / D	12.0		48,230	656	0	36,182	85,068	43,044
06-8424	Eligibility Technician II	FT	A	GP	Wasilla	200	14F / G	12.0		53,823	732	0	38,199	92,754	46,934
06-8425	Eligibility Technician II	FT	A	GP	Anchorage	200	14E / F	12.0		51,344	699	0	37,305	89,348	45,210
06-8430	Office Assistant I	FT	A	GP	Wasilla	200	8C / D	12.0		32,917	448	0	30,660	64,025	32,397
06-8431	Eligibility Technician IV	FT	A	SS	Anchorage	200	17K / L	12.0		76,098	0	0	46,271	122,369	61,919
06-8432	Eligibility Technician III	FT	A	GP	Anchorage	200	16G / J	12.0		64,354	876	0	41,996	107,226	54,256
06-8433	Eligibility Technician III	FT	A	GP	Anchorage	200	16F / G	12.0		61,592	838	0	41,000	103,430	52,336
06-8434	Eligibility Technician II	FT	A	GP	Fairbanks	203	14G	12.0		56,532	769	0	39,176	96,477	48,817
06-8435	Eligibility Technician II	FT	A	GP	Anchorage	200	14G	12.0		54,888	747	0	38,583	94,218	47,674
06-8436	Eligibility Technician II	FT	A	GP	Wasilla	200	14C / D	12.0		48,526	660	0	36,289	85,475	43,250
06-8437	Eligibility Technician II	FT	A	GP	Anchorage	200	14C / D	12.0		49,118	668	0	36,502	86,288	43,662
06-8438	Eligibility Technician II	FT	A	GP	Wasilla	200	14F / G	12.0		54,817	746	0	38,557	94,120	47,625
06-8439	Eligibility Technician II	FT	A	GP	Anchorage	200	14A / B	12.0		46,152	628	0	35,433	82,213	41,600
06-8440	Eligibility Technician II	FT	A	GP	Anchorage	200	14B / C	12.0		46,477	632	0	35,550	82,659	41,826
06-8441	Eligibility Technician II	FT	A	GP	Fairbanks	203	14C / D	12.0		50,058	681	0	36,841	87,580	44,316
06-8442	Eligibility Technician IV	FT	A	SS	Fairbanks	99	17K / L	12.0		78,900	0	0	47,282	126,182	63,848
06-8443	Eligibility Technician II	FT	A	GP	Fairbanks	203	14B / C	12.0		47,867	651	0	36,051	84,569	42,792
06-8444	Eligibility Technician II	FT	A	GP	Fairbanks	203	14C / D	12.0		50,976	694	0	37,172	88,842	44,954
06-8445	Eligibility Technician II	FT	A	GP	Fairbanks	203	14B / C	12.0		48,470	659	0	36,269	85,398	43,211
06-8446	Eligibility Technician II	FT	A	GP	Fairbanks	203	14C / D	12.0		50,058	681	0	36,841	87,580	44,316
06-8449	Eligibility Technician II	FT	A	GP	Nome	237	14F / G	12.0		73,155	995	0	45,170	119,320	60,376

Note: If a position is split, an asterisk (*) will appear in the Split/Count column. If the split position is also counted in the component, two asterisks (**) will appear in this column. [No valid job title] appearing in the Job Class Title indicates that the PCN has an invalid class code or invalid range for the class code effective date of this scenario.

Personal Services Expenditure Detail
Department of Health and Social Services

Scenario: FY2021 Governor (16414)
Component: Public Assistance Field Services (236)
RDU: Public Assistance (73)

PCN	Job Class Title	Time Status	Retire Code	Barg Unit	Location	Salary Sched	Range / Step	Comp Months	Split / Count	Annual Salaries	COLA	Premium Pay	Annual Benefits	Total Costs	UGF Amount
06-8451	Eligibility Technician II	FT	A	GP	Bethel	250	14B / C	12.0		70,691	962	0	44,281	115,934	58,663
06-8453	Eligibility Technician II	FT	A	GP	Kenai	200	14F / G	12.0		54,036	735	0	38,276	93,047	47,082
06-8454	Office Assistant I	FT	A	GP	Wasilla	200	8G	12.0		37,092	505	0	32,166	69,763	37,393
06-8455	Eligibility Technician I	PT	A	GP	Juneau	205	13C	9.0		35,145	478	0	26,766	62,389	0
06-8456	Eligibility Technician II	FT	A	GP	Juneau	205	14G / J	12.0		57,938	788	0	39,683	98,409	49,795
06-8457	Eligibility Technician II	FT	A	GP	Wasilla	200	14D / E	12.0		51,116	695	0	37,223	89,034	45,051
06-8458	Administrative Assistant II	FT	A	GP	Wasilla	200	14B / C	12.0		46,932	639	0	35,714	83,285	42,142
06-8459	Office Assistant I	FT	A	GP	Wasilla	200	8C / D	12.0		33,725	459	0	30,952	65,136	32,959
06-8460	Eligibility Technician II	FT	A	GP	Anchorage	200	14F / G	12.0		54,817	746	0	38,557	94,120	47,625
06-8461	Eligibility Technician II	FT	A	GP	Anchorage	200	14B / C	12.0		46,477	632	0	35,550	82,659	41,826
06-8462	Eligibility Technician II	FT	A	GP	Anchorage	200	14C / D	12.0		49,488	673	0	36,636	86,797	43,919
06-8463	Eligibility Technician IV	FT	A	SS	Anchorage	200	17F / J	12.0		70,800	0	0	44,361	115,161	58,272
06-8464	Eligibility Technician II	FT	A	GP	Wasilla	200	14F / G	12.0		54,817	746	0	38,557	94,120	47,625
06-8465	Eligibility Technician II	FT	A	GP	Wasilla	200	14D / E	12.0		49,932	679	0	36,796	87,407	44,228
06-8467	Office Assistant I	FT	A	GP	Kenai	200	8C / D	12.0		33,002	449	0	30,691	64,142	32,456
06-8468	Eligibility Technician II	FT	A	GP	Ketchikan	200	14K / L	12.0		60,732	826	0	40,690	102,248	51,738
06-8469	Eligibility Technician II	FT	A	GP	Wasilla	200	14L / L	12.0		60,972	830	0	40,777	102,579	51,905
06-8470	Office Assistant II	FT	A	GP	Anchorage	200	10C / D	12.0		37,310	508	0	32,244	70,062	35,451
06-8471	Eligibility Technician II	FT	A	GP	Anchorage	200	14D / E	12.0		58,236	792	0	39,790	98,818	50,002
06-8472	Eligibility Technician II	FT	A	GP	Anchorage	99	14N / N	12.0		64,020	871	0	41,876	106,767	54,024
06-8473	Eligibility Technician II	FT	A	GP	Kenai	200	14J	12.0		57,192	778	0	39,414	97,384	49,276
06-8474	Eligibility Technician II	FT	A	GP	Anchorage	99	14M / M	12.0		59,328	807	0	40,184	100,319	50,761
06-8475	Eligibility Technician II	FT	A	GP	Anchorage	200	14B / C	12.0		46,932	639	0	35,714	83,285	42,142
06-8476	Office Assistant I	FT	A	GP	Anchorage	200	8B / C	12.0		32,538	443	0	30,524	63,505	32,134
06-8477	Eligibility Technician II	FT	A	GP	Anchorage	200	14E / F	12.0		52,704	717	0	37,795	91,216	46,155
06-8478	Eligibility Technician II	FT	A	GP	Fairbanks	203	14B / C	12.0		47,934	652	0	36,075	84,661	42,839
06-8479	Eligibility Technician II	FT	A	GP	Fairbanks	203	14B / C	12.0		48,202	656	0	36,172	85,030	43,025
06-8480	Eligibility Technician II	FT	A	GP	Fairbanks	203	14M	12.0		64,836	882	0	42,170	107,888	54,591
06-8481	Eligibility Technician II	FT	A	GP	Wasilla	200	14B / C	12.0		47,192	642	0	35,808	83,642	42,323
06-8482	Eligibility Technician II	FT	A	GP	Kenai	200	14G / J	12.0		56,520	769	0	39,171	96,460	48,809
06-8483	Eligibility Technician II	FT	A	GP	Anchorage	200	14C / D	12.0		49,488	673	0	36,636	86,797	43,919
06-8484	Eligibility Technician II	FT	A	GP	Wasilla	200	14A / B	12.0		45,327	617	0	35,135	81,079	41,026
06-8486	Eligibility Technician II	FT	A	GP	Anchorage	200	14D / E	12.0		50,228	683	0	36,903	87,814	44,434
06-8488	Eligibility Technician II	FT	A	GP	Wasilla	200	14B / C	12.0		46,997	639	0	35,737	83,373	42,187
06-8498	Eligibility Technician II	FT	A	GP	Anchorage	200	14B / C	12.0		47,452	646	0	35,902	84,000	42,504
06-8499	Eligibility Technician II	FT	A	GP	Anchorage	200	14B / C	12.0		46,802	637	0	35,667	83,106	42,052
06-8500	Eligibility Technician II	FT	A	GP	Anchorage	99	14M	12.0		62,016	844	0	41,153	104,013	52,631
06-8501	Eligibility Technician III	FT	A	GP	Kenai	200	16G	12.0		63,264	861	0	41,603	105,728	53,498

Note: If a position is split, an asterisk (*) will appear in the Split/Count column. If the split position is also counted in the component, two asterisks (**) will appear in this column.
 [No valid job title] appearing in the Job Class Title indicates that the PCN has an invalid class code or invalid range for the class code effective date of this scenario.

Personal Services Expenditure Detail
Department of Health and Social Services

Scenario: FY2021 Governor (16414)
Component: Public Assistance Field Services (236)
RDU: Public Assistance (73)

PCN	Job Class Title	Time Status	Retire Code	Barg Unit	Location	Salary Sched	Range / Step	Comp Months	Split / Count	Annual Salaries	COLA	Premium Pay	Annual Benefits	Total Costs	UGF Amount
06-8502	Eligibility Technician II	FT	A	GP	Wasilla	200	14D / E	12.0		49,636	675	0	36,689	87,000	44,022
06-8503	Office Assistant I	FT	A	GP	Bethel	250	8D / E	12.0		51,218	697	0	37,260	89,175	45,123
06-8504	Eligibility Technician II	FT	A	GP	Juneau	205	14B / C	12.0		48,799	664	0	36,387	85,850	43,440
06-8505	Pb Asst Fsmii	FT	A	SS	Anchorage	99	21M	12.0		105,864	0	0	57,005	162,869	82,412
06-8506	Eligibility Technician II	FT	A	GP	Anchorage	200	14D / E	12.0		49,784	677	0	36,742	87,203	44,125
06-8507	Eligibility Technician IV	FT	A	SS	Anchorage	200	17C / D	12.0		66,108	0	0	42,669	108,777	55,041
06-8508	Eligibility Technician II	FT	A	GP	Kenai	200	14B / C	12.0		46,867	638	0	35,691	83,196	42,097
06-8509	Eligibility Technician II	FT	A	GP	Ketchikan	200	14B / C	12.0		46,282	630	0	35,480	82,392	41,690
06-8510	Eligibility Technician II	FT	A	GP	Anchorage	200	14K	12.0		59,052	803	0	40,084	99,939	50,569
06-8511	Eligibility Technician III	FT	A	GP	Anchorage	200	16C / D	12.0		56,952	775	0	39,327	97,054	49,109
06-8512	Eligibility Technician II	FT	A	GP	Wasilla	200	14C / D	12.0		48,674	662	0	36,342	85,678	43,353
06-8513	Eligibility Technician II	FT	A	GP	Wasilla	200	14G / J	12.0		55,944	761	0	38,964	95,669	48,409
06-8514	Eligibility Technician II	FT	A	GP	Anchorage	200	14B / C	12.0		46,542	633	0	35,573	82,748	41,871
06-8515	Administrative Assistant II	FT	A	GP	Ketchikan	200	14G / J	12.0		57,096	777	0	39,379	97,252	49,210
06-8516	Eligibility Technician II	FT	A	GP	Anchorage	200	14G / J	12.0		57,000	776	0	39,345	97,121	49,143
06-8517	Eligibility Technician II	FT	A	GP	Anchorage	200	14B / C	12.0		46,347	631	0	35,503	82,481	41,735
06-8518	Eligibility Technician II	FT	A	GP	Anchorage	200	14A / B	12.0		44,946	612	0	34,998	80,556	40,761
06-8520	Eligibility Technician II	FT	A	GP	Anchorage	200	14J	12.0		57,192	778	0	39,414	97,384	49,276
06-8521	Eligibility Technician III	FT	A	GP	Anchorage	200	16L	12.0		70,224	955	0	44,113	115,292	58,338
06-8522	Eligibility Technician II	FT	A	GP	Anchorage	200	14C / D	12.0		48,156	655	0	36,155	84,966	42,993
06-8524	Office Assistant I	FT	A	GP	Kenai	200	8F / G	12.0		36,082	491	0	31,801	68,374	34,597
06-8525	Eligibility Technician II	FT	A	GP	Homer	200	14J	12.0		57,192	778	0	39,414	97,384	49,276
06-8526	Eligibility Technician II	FT	A	GP	Kenai	200	14M	12.0		62,952	857	0	41,491	105,300	53,282
06-8527	Eligibility Technician II	FT	A	GP	Wasilla	200	14J / K	12.0		58,665	798	0	39,945	99,408	50,300
06-8528	Eligibility Technician II	FT	A	GP	Wasilla	200	14C / D	12.0		48,230	656	0	36,182	85,068	43,044
06-8533	Public Assistance Analyst I	FT	A	GP	Anchorage	200	16J / K	12.0		66,414	904	0	42,739	110,057	55,689
06-8535	Public Assistance Analyst I	FT	A	GP	Anchorage	200	16D / E	12.0		58,090	790	0	39,738	98,618	49,901
06-8537	Office Assistant I	FT	A	GP	Wasilla	200	8B / C	12.0		32,832	447	0	30,630	63,909	32,338
06-8540	Eligibility Technician II	FT	A	GP	Fairbanks	203	14J	12.0		58,908	802	0	40,033	99,743	50,470
06-8541	Eligibility Technician II	FT	A	GP	Kenai	200	14D / E	12.0		50,598	688	0	37,036	88,322	44,691
06-8545	Eligibility Technician II	FT	A	GP	Wasilla	200	14K	12.0		59,052	803	0	40,084	99,939	50,569
06-8546	Eligibility Technician II	FT	A	GP	Anchorage	200	14D / E	12.0		49,710	676	0	36,716	87,102	44,074
06-8547	Eligibility Technician II	FT	A	GP	Fairbanks	203	14B / C	12.0		47,666	649	0	35,979	84,294	42,653
06-8548	Emp Svc Tech II	FT	A	GP	Fairbanks	203	15O / P	12.0		84,648	1,152	0	49,314	135,114	0
06-8554	Pb Asst Fsm I	FT	A	SS	Anchorage	200	19F	12.0		80,892	0	0	48,000	128,892	65,219
06-8555	Eligibility Technician II	FT	A	GP	Anchorage	200	14F / G	12.0		53,255	725	0	37,994	91,974	46,539
06-8556	Eligibility Technician II	FT	A	GP	Anchorage	200	14C / D	12.0		49,414	672	0	36,609	86,695	43,868
06-8557	Eligibility Technician II	FT	A	GP	Anchorage	200	14B / C	12.0		46,477	632	0	35,550	82,659	41,826

Note: If a position is split, an asterisk (*) will appear in the Split/Count column. If the split position is also counted in the component, two asterisks (**) will appear in this column.
 [No valid job title] appearing in the Job Class Title indicates that the PCN has an invalid class code or invalid range for the class code effective date of this scenario.

Personal Services Expenditure Detail
Department of Health and Social Services

Scenario: FY2021 Governor (16414)
Component: Public Assistance Field Services (236)
RDU: Public Assistance (73)

PCN	Job Class Title	Time Status	Retire Code	Barg Unit	Location	Salary Sched	Range / Step	Comp Months	Split / Count	Annual Salaries	COLA	Premium Pay	Annual Benefits	Total Costs	UGF Amount
06-8558	Eligibility Technician II	FT	A	GP	Fairbanks	203	14F / G	12.0		55,729	758	0	38,886	95,373	48,259
06-8559	Eligibility Technician II	FT	A	GP	Anchorage	200	14B / C	12.0		46,607	634	0	35,597	82,838	41,916
06-8560	Eligibility Technician II	FT	A	GP	Fairbanks	203	14C / D	12.0		50,976	694	0	37,172	88,842	44,954
06-8562	Eligibility Technician II	FT	A	GP	Kenai	200	14E / F	12.0		51,664	703	0	37,420	89,787	45,432
06-8563	Eligibility Technician II	FT	A	GP	Wasilla	200	14M	12.0		62,952	857	0	41,491	105,300	53,282
06-8564	Eligibility Technician II	FT	A	GP	Wasilla	200	14L	12.0		60,972	830	0	40,777	102,579	51,905
06-8565	Eligibility Technician II	FT	A	GP	Wasilla	200	14D / E	12.0		49,562	674	0	36,662	86,898	43,970
06-8566	Eligibility Technician III	FT	A	GP	Fairbanks	203	16K / L	12.0		71,101	967	0	44,429	116,497	58,948
06-8568	Emp Svc Tech II	FT	A	GG	Fairbanks	203	15M / N	12.0		78,636	1,070	0	47,146	126,852	0
06-8569	Eligibility Technician II	FT	A	GP	Juneau	205	14L / M	12.0		65,750	895	0	42,500	109,145	55,227
06-8570	Eligibility Technician II	FT	A	GP	Ketchikan	200	14D / E	12.0		49,636	675	0	36,689	87,000	44,022
06-8571	Eligibility Technician II	FT	A	GP	Wasilla	200	14F / G	12.0		54,107	736	0	38,301	93,144	47,131
06-8580	Public Assistance Analyst I	FT	A	GP	Anchorage	200	16L	12.0		70,224	955	0	44,113	115,292	58,338
06-8582	Pb Asst Fsmii	FT	A	SS	Wasilla	200	21D / E	12.0		87,500	0	0	50,383	137,883	69,769
06-8583	Eligibility Technician II	FT	A	GP	Anchorage	200	14G / J	12.0		56,520	769	0	39,171	96,460	48,809
06-8584	Eligibility Technician II	FT	A	GP	Bethel	250	14D / E	12.0		75,564	1,028	0	46,039	122,631	62,051
06-8585	Eligibility Technician II	FT	A	GP	Wasilla	200	14J	12.0		57,192	778	0	39,414	97,384	49,276
06-8586	Eligibility Technician II	FT	A	GP	Anchorage	200	14C / D	12.0		48,970	666	0	36,449	86,085	43,559
06-8587	Eligibility Technician II	FT	A	GP	Anchorage	200	14C / D	12.0		49,488	673	0	36,636	86,797	43,919
06-8592	Public Assistance Analyst II	FT	A	GP	Anchorage	200	18C / D	12.0		65,244	888	0	42,317	108,449	54,875
06-8593	Office Assistant I	FT	A	GP	Fairbanks	203	8B / C	12.0		33,644	458	0	30,922	65,024	32,902
06-8594	Administrative Assistant II	FT	A	GP	Anchorage	200	14A / B	12.0		44,882	611	0	34,975	80,468	40,717
06-8600	Eligibility Technician IV	FT	A	SS	Anchorage	200	17D / E	12.0		68,121	0	0	43,395	111,516	56,427
06-8601	Office Assistant I	FT	A	GP	Anchorage	200	8B / C	12.0		32,538	443	0	30,524	63,505	34,039
06-8602	Eligibility Technician II	FT	A	GP	Anchorage	200	14B / C	12.0		46,672	635	0	35,620	82,927	41,961
06-8603	Eligibility Technician II	FT	A	GP	Anchorage	200	14A / B	12.0		46,152	628	0	35,433	82,213	41,600
06-8604	Eligibility Technician II	FT	A	GP	Anchorage	200	14B / C	12.0		46,477	632	0	35,550	82,659	41,826
06-8605	Eligibility Technician II	FT	A	GP	Anchorage	200	14B / C	12.0		47,647	648	0	35,972	84,267	42,639
06-8606	Eligibility Technician II	FT	A	GP	Wasilla	200	14C / D	12.0		49,488	673	0	36,636	86,797	43,919
06-8607	Eligibility Technician II	FT	A	GP	Anchorage	200	14D / E	12.0		50,080	681	0	36,849	87,610	44,331
06-8608	Eligibility Technician II	FT	A	GP	Anchorage	200	14B / C	12.0		47,647	648	0	35,972	84,267	42,639
06-8609	Eligibility Technician II	FT	A	GP	Anchorage	200	14B / C	12.0		46,542	633	0	35,573	82,748	41,871
06-8610	Eligibility Technician II	FT	A	GP	Anchorage	200	14B / C	12.0		46,542	633	0	35,573	82,748	41,871
06-8611	Eligibility Technician III	FT	A	GP	Anchorage	200	16D / E	12.0		57,565	783	0	39,548	97,896	49,535
06-8612	Eligibility Office Manager II	FT	A	SS	Anchorage	200	19L	12.0		89,028	0	0	50,934	139,962	70,821
06-8613	Training Specialist II	FT	A	GP	Anchorage	200	18B / C	12.0		61,856	842	0	41,096	103,794	52,520
06-8617	Eligibility Technician II	FT	A	GP	Anchorage	200	14D / E	12.0		50,154	682	0	36,876	87,712	44,382
06-8618	Eligibility Technician II	FT	A	GP	Wasilla	200	14C / D	12.0		49,414	672	0	36,609	86,695	43,868

Note: If a position is split, an asterisk (*) will appear in the Split/Count column. If the split position is also counted in the component, two asterisks (**) will appear in this column.
 [No valid job title] appearing in the Job Class Title indicates that the PCN has an invalid class code or invalid range for the class code effective date of this scenario.

Personal Services Expenditure Detail
Department of Health and Social Services

Scenario: FY2021 Governor (16414)
Component: Public Assistance Field Services (236)
RDU: Public Assistance (73)

PCN	Job Class Title	Time Status	Retire Code	Barg Unit	Location	Salary Sched	Range / Step	Comp Months	Split / Count	Annual Salaries	COLA	Premium Pay	Annual Benefits	Total Costs	UGF Amount
06-8619	Office Assistant I	FT	A	GP	Anchorage	200	8C / D	12.0		33,810	460	0	30,982	65,252	33,018
06-8621	Eligibility Technician II	FT	A	GP	Ketchikan	200	14F / G	12.0		53,610	729	0	38,122	92,461	46,785
06-8622	Eligibility Technician II	FT	A	GP	Juneau	205	14G	12.0		57,636	784	0	39,574	97,994	49,585
06-8627	Eligibility Technician II	FT	A	GP	Anchorage	200	14C / D	12.0		48,230	656	0	36,182	85,068	43,044
06-8628	Eligibility Technician II	FT	A	GP	Anchorage	200	14F / G	12.0		53,681	730	0	38,148	92,559	46,835
06-8629	Eligibility Technician II	FT	A	GP	Anchorage	200	14A / B	12.0		46,152	628	0	35,433	82,213	41,600
06-8630	Eligibility Technician III	FT	A	GP	Wasilla	200	16E / F	12.0		61,152	832	0	40,842	102,826	52,030
06-8631	Eligibility Technician II	FT	A	GP	Wasilla	200	14C / D	12.0		49,488	673	0	36,636	86,797	43,919
06-8632	Eligibility Technician II	FT	A	GP	Wasilla	200	14C / D	12.0		48,230	656	0	36,182	85,068	43,044
06-8633	Office Assistant I	FT	A	GP	Wasilla	200	8B / C	12.0		32,832	447	0	30,630	63,909	32,338
06-8640	Eligibility Technician II	FT	A	GP	Anchorage	200	14B / C	12.0		46,542	633	0	35,573	82,748	41,871
06-8641	Eligibility Technician II	FT	A	GG	Wasilla	200	14C / D	12.0		49,488	673	0	36,636	86,797	43,919
06-8642	Eligibility Technician II	FT	A	GP	Wasilla	200	14C / D	12.0		49,488	673	0	36,636	86,797	43,919
06-8646	Emp Svc Tech II	FT	A	GP	Wasilla	200	15B / C	12.0		51,264	697	0	37,276	89,237	0
06-8647	Eligibility Office Manager I	FT	A	SS	Nome	237	18B / C	12.0		92,070	0	0	52,031	144,101	72,915
06-8648	Employment Services Manager II	FT	A	SS	Anchorage	200	18B / C	12.0		67,938	0	0	43,329	111,267	56,301
06-8649	Office Assistant I	FT	A	GP	Wasilla	200	8C / D	12.0		32,960	448	0	30,676	64,084	34,349
06-8650	Office Assistant IV	FT	A	SS	Anchorage	600	12D / E	12.0		46,869	0	0	35,731	82,600	41,796
06-8651	Eligibility Technician III	FT	A	GP	Anchorage	200	16D / E	12.0		58,615	798	0	39,927	99,340	50,266
06-8652	Eligibility Technician II	FT	A	GP	Anchorage	200	14B / C	12.0		46,607	634	0	35,597	82,838	41,916
06-8653	Eligibility Technician II	FT	A	GP	Anchorage	200	14B / C	12.0		47,647	648	0	35,972	84,267	42,639
06-8655	Eligibility Technician II	FT	A	GP	Ketchikan	200	14F / G	12.0		53,752	731	0	38,173	92,656	46,884
06-8656	Eligibility Technician II	FT	A	GP	Ketchikan	200	14A / B	12.0		46,152	628	0	35,433	82,213	41,600
06-8657	Eligibility Technician II	FT	A	GP	Ketchikan	200	14C / D	12.0		49,266	670	0	36,556	86,492	43,765
06-8660	Eligibility Technician II	FT	A	GP	Anchorage	200	14E / F	12.0		52,224	711	0	37,622	90,557	45,822
06-8661	Eligibility Technician IV	FT	A	SS	Juneau	205	17D / E	12.0		71,628	0	0	44,659	116,287	58,841
06-8662	Office Assistant II	FT	A	GG	Wasilla	100	10D / E	12.0		39,660	540	0	33,092	73,292	37,086
06-8663	Eligibility Technician II	FT	A	GG	Wasilla	100	14D / E	12.0		51,696	703	0	37,432	89,831	45,455
06-8664	Office Assistant II	FT	A	GG	Wasilla	100	10D / E	12.0		39,660	540	0	33,092	73,292	37,086
06-8665	Office Assistant II	FT	A	GG	Wasilla	100	10D / E	12.0		39,660	540	0	33,092	73,292	37,086
06-8666	Eligibility Technician II	FT	A	GG	Wasilla	100	14D / E	12.0		51,696	703	0	37,432	89,831	45,455
06-8667	Eligibility Technician IV	FT	A	SS	Wasilla	200	17F	12.0		70,704	0	0	44,326	115,030	58,205
06-8668	Eligibility Technician IV	FT	A	SS	Homer	200	17E / F	12.0		70,704	0	0	44,326	115,030	58,205
06-8669	Eligibility Technician III	FT	A	GG	Wasilla	100	16D / E	12.0		59,592	811	0	40,279	100,682	50,945
06-8670	Eligibility Technician II	FT	A	GG	Homer	200	14D / E	12.0		51,264	697	0	37,276	89,237	45,154
06-8671	Eligibility Technician II	FT	A	GG	Kodiak	211	14D / E	12.0		56,904	774	0	39,310	96,988	49,076
06-8672	Eligibility Technician II	FT	A	GG	Wasilla	200	14D / E	12.0		51,264	697	0	37,276	89,237	45,154
06-8673	Eligibility Technician II	FT	A	GG	Wasilla	200	14D / E	12.0		51,264	697	0	37,276	89,237	45,154

Note: If a position is split, an asterisk (*) will appear in the Split/Count column. If the split position is also counted in the component, two asterisks (**) will appear in this column. [No valid job title] appearing in the Job Class Title indicates that the PCN has an invalid class code or invalid range for the class code effective date of this scenario.

Personal Services Expenditure Detail
Department of Health and Social Services

Scenario: FY2021 Governor (16414)
Component: Public Assistance Field Services (236)
RDU: Public Assistance (73)

PCN	Job Class Title	Time Status	Retire Code	Barg Unit	Location	Salary Sched	Range / Step	Comp Months	Split / Count	Annual Salaries	COLA	Premium Pay	Annual Benefits	Total Costs	UGF Amount
06-8674	Eligibility Technician II	FT	A	GG	Wasilla	200	14D / E	12.0		51,264	697	0	37,276	89,237	45,154
06-8675	Eligibility Technician II	FT	A	GG	Wasilla	100	14D / E	12.0		51,696	703	0	37,432	89,831	45,455
06-8676	Eligibility Technician II	FT	A	GG	Wasilla	100	14D / E	12.0		51,696	703	0	37,432	89,831	45,455
06-8677	Eligibility Technician II	FT	A	GG	Wasilla	100	14D / E	12.0		51,696	703	0	37,432	89,831	45,455
06-8678	Eligibility Technician II	FT	A	GG	Wasilla	100	14D / E	12.0		51,696	703	0	37,432	89,831	45,455
06-8679	Eligibility Technician II	FT	A	GG	Wasilla	100	14D / E	12.0		51,696	703	0	37,432	89,831	45,455
06-8680	Eligibility Technician II	FT	A	GG	Wasilla	100	14D / E	12.0		51,696	703	0	37,432	89,831	45,455
06-8681	Eligibility Technician III	FT	A	GG	Wasilla	200	16O / P	12.0		78,755	1,072	0	47,189	127,016	64,270
06-8689	Office Assistant II	FT	A	GG	Anchorage	200	10C	12.0		37,092	505	0	32,166	69,763	34,882
06-8690	Office Assistant II	FT	A	GG	Anchorage	200	10C	12.0		37,092	505	0	32,166	69,763	34,882
06-8692	Office Assistant II	FT	A	GG	Wasilla	200	10C	12.0		37,092	505	0	32,166	69,763	34,882
06-8693	Office Assistant II	FT	A	GG	Wasilla	200	10C	12.0		37,092	505	0	32,166	69,763	34,882
06-8696	Eligibility Technician II	FT	A	GG	Wasilla	200	14C	12.0		47,712	649	0	35,995	84,356	42,178
06-8697	Eligibility Technician II	FT	A	GG	Wasilla	200	14C	12.0		47,712	649	0	35,995	84,356	42,178
06-8698	Eligibility Technician II	FT	A	GG	Wasilla	200	14C	12.0		47,712	649	0	35,995	84,356	42,178
06-8699	Eligibility Technician II	FT	A	GG	Sitka	205	14C	12.0		50,100	682	0	36,856	87,638	43,819
06-8700	Eligibility Technician IV	FT	A	SS	Wasilla	200	17C	12.0		63,852	0	0	41,855	105,707	52,854
06-8702	Eligibility Technician IV	FT	A	SS	Sitka	205	17C	12.0		67,044	0	0	43,006	110,050	55,025
06-8703	Eligibility Technician IV	FT	A	SS	Wasilla	200	17C	12.0		63,852	0	0	41,855	105,707	52,854
07-5202	Emp Svc Tech II	FT	A	GP	Wasilla	200	15F / G	12.0		57,215	778	0	39,422	97,415	0
07-5205	Emp Svc Tech II	FT	A	GP	Wasilla	200	15E / F	12.0		55,920	761	0	38,955	95,636	0
07-5216	Emp Svc Tech II	FT	A	GP	Fairbanks	203	15B	12.0		68,640	934	0	43,542	113,116	0
07-5234	Emp Svc Techiii	FT	A	SS	Fairbanks	203	16J	12.0		70,296	0	0	44,179	114,475	0
07-5268	Emp Svc Tech II	FT	A	GP	Wasilla	200	15O	12.0		72,108	981	0	44,792	117,881	0
07-5365	Emp Svc Tech II	FT	A	GP	Wasilla	200	15B / C	12.0		49,858	678	0	36,769	87,305	0
07-5421	Emp Svc Tech II	FT	A	GP	Kenai	200	15B / C	12.0		51,190	696	0	37,249	89,135	0
07-5434	Emp Svc Tech II	FT	A	GP	Ketchikan	200	15L	12.0		65,520	891	0	42,417	108,828	0
07-5530	Emp Svc Techiii	FT	A	SS	Wasilla	200	16L	12.0		72,756	0	0	45,066	117,822	0
07-5591	Ss Prog Coord	FT	A	GP	Anchorage	200	20J / K	12.0		86,518	1,177	0	49,989	137,684	68,842
07-5789	Emp Svc Tech II	FT	A	GP	Wasilla	200	15C / D	12.0		52,784	718	0	37,824	91,326	0
07-5830	Emp Svc Tech II	FT	A	GP	Fairbanks	203	15L	12.0		67,488	918	0	43,126	111,532	0
07-5971	Emp Svc Tech II	FT	A	GP	Nome	237	15G / J	12.0		82,967	1,129	0	48,708	132,804	0
07-5972	Emp Svc Tech II	FT	A	GP	Nome	237	15L	12.0		89,760	1,221	0	51,158	142,139	0
07-5973	Emp Svc Tech II	FT	A	GP	Nome	237	15B / C	12.0		68,206	928	0	43,385	112,519	0
07-5974	Emp Svc Tech II	FT	A	GP	Fairbanks	203	15C / D	12.0		68,733	935	0	43,575	113,243	0
07-5976	Emp Svc Tech II	FT	A	GP	Wasilla	200	15C / D	12.0		51,584	702	0	37,392	89,678	0
07-5977	Emp Svc Techiii	FT	A	SS	Kenai	200	16J	12.0		68,244	0	0	43,439	111,683	0
07-5979	Eligibility Technician IV	FT	A	SS	Kenai	200	17C / D	12.0		65,826	0	0	42,567	108,393	0

Note: If a position is split, an asterisk (*) will appear in the Split/Count column. If the split position is also counted in the component, two asterisks (**) will appear in this column. [No valid job title] appearing in the Job Class Title indicates that the PCN has an invalid class code or invalid range for the class code effective date of this scenario.

Personal Services Expenditure Detail
Department of Health and Social Services

Scenario: FY2021 Governor (16414)
Component: Public Assistance Field Services (236)
RDU: Public Assistance (73)

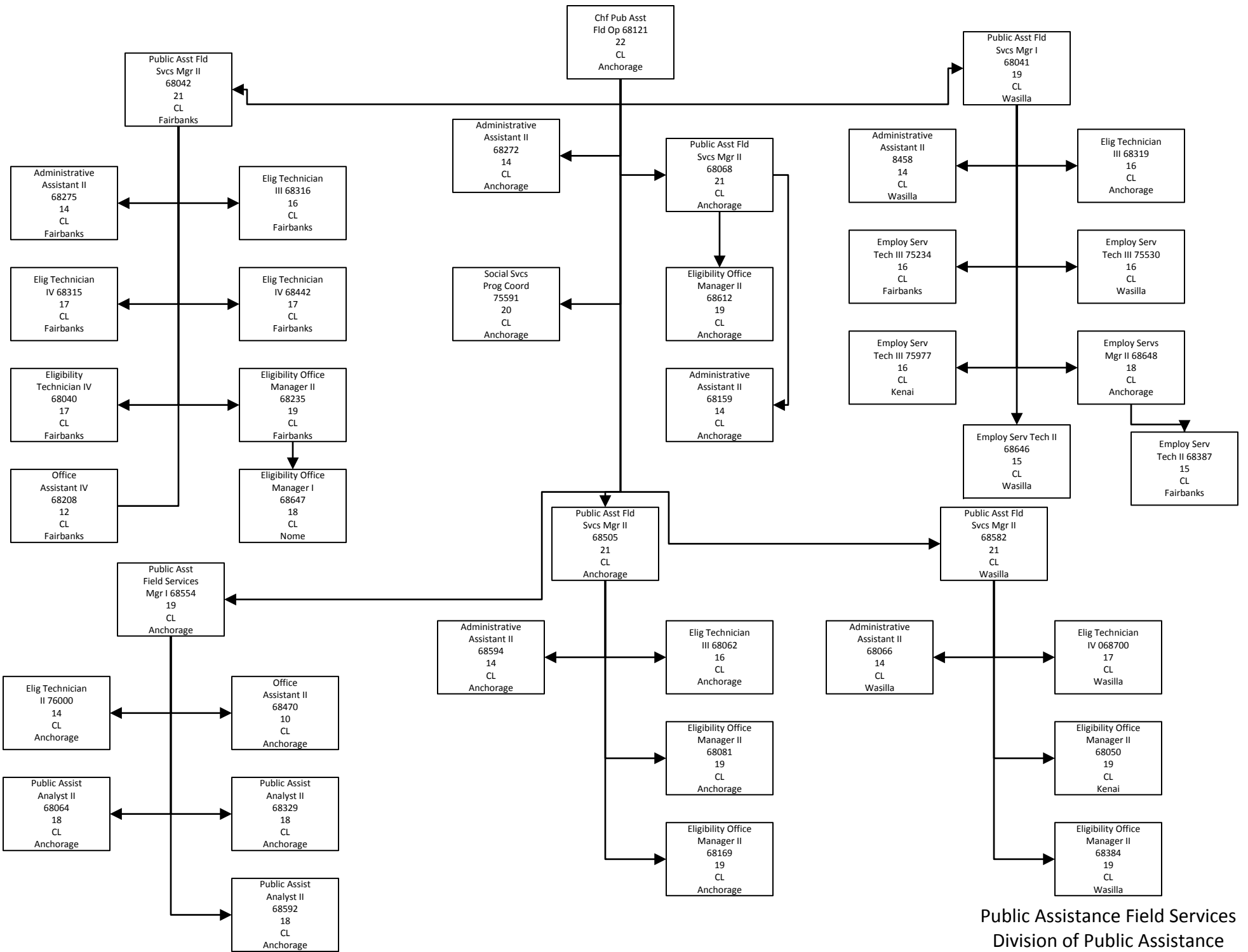
PCN	Job Class Title	Time Status	Retire Code	Barg Unit	Location	Salary Sched	Range / Step	Comp Months	Split / Count	Annual Salaries	COLA	Premium Pay	Annual Benefits	Total Costs	UGF Amount
07-5980	Emp Svc Tech II	FT	A	GP	Kenai	200	15M	12.0		67,644	920	0	43,183	111,747	0
07-5981	Emp Svc Tech II	FT	A	GP	Kenai	200	15C / D	12.0		51,504	701	0	37,363	89,568	0
07-5982	Emp Svc Tech II	FT	A	GP	Kenai	200	15D / E	12.0		54,675	744	0	38,506	93,925	0
07-5983	Emp Svc Tech II	FT	A	GP	Homer	200	15B / C	12.0		51,264	697	0	37,276	89,237	0
07-5999	Emp Svc Tech II	FT	A	GP	Wasilla	200	15L	12.0		65,520	891	0	42,417	108,828	0
07-6000	Eligibility Technician II	FT	A	GP	Anchorage	200	14C / D	12.0		48,452	659	0	36,262	85,373	43,199
07-6029	Emp Svc Tech II	FT	A	GG	Fairbanks	203	15N	12.0		71,940	979	0	44,732	117,651	0
21-3046	Emp Svc Tech II	FT	A	GP	Fairbanks	203	15G / J	12.0		61,553	837	0	40,986	103,376	0
													Total Salary Costs:	25,822,376	
													Total COLA:	292,118	
													Total Premium Pay:	0	
													Total Benefits:	17,995,000	
													Total Pre-Vacancy:	44,109,494	
													Minus Vacancy Adjustment of 6.85%:	(3,020,394)	
													Total Post-Vacancy:	41,089,100	
													Plus Lump Sum Premium Pay:	0	
													Personal Services Line 100:	41,089,100	

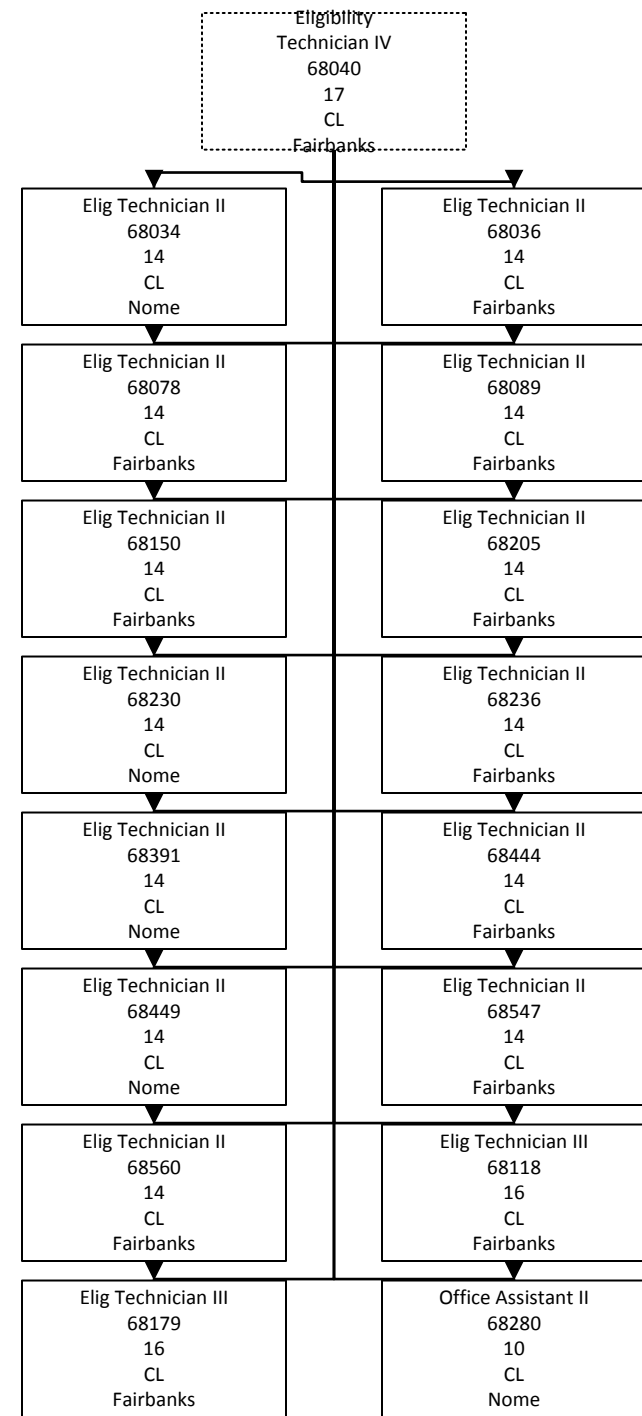
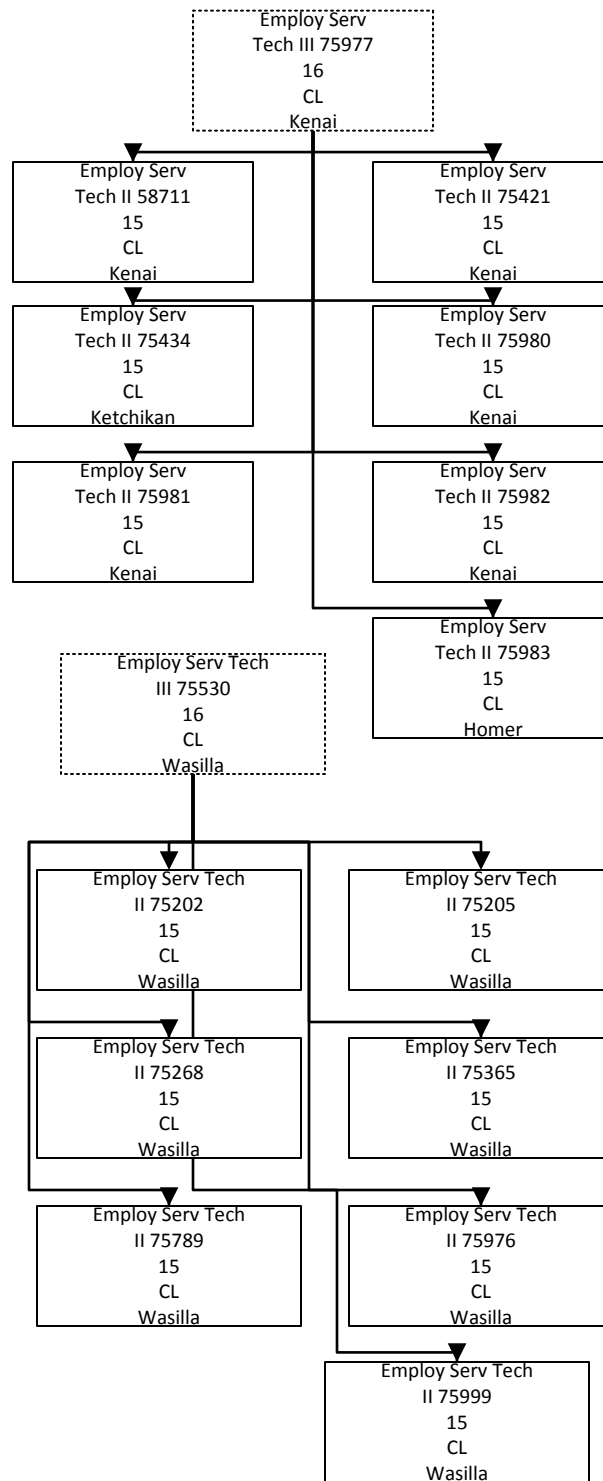
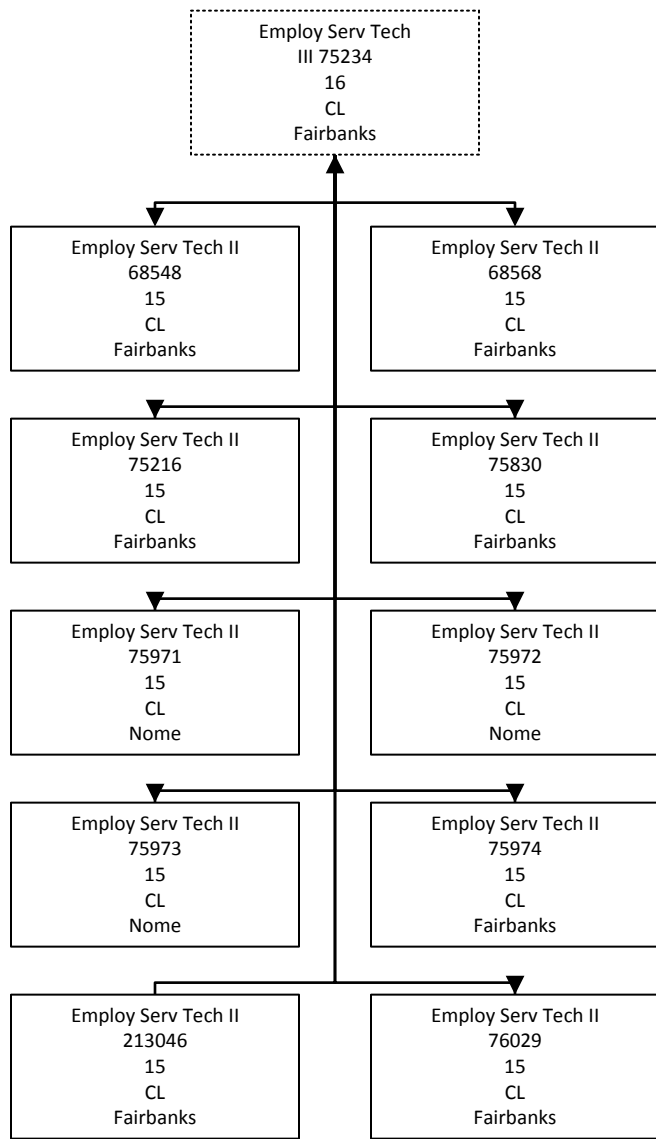
	Total Positions	New	Deleted
Full Time Positions:	456	0	0
Part Time Positions:	8	0	0
Non Permanent Positions:	0	0	0
Positions in Component:	464	0	0

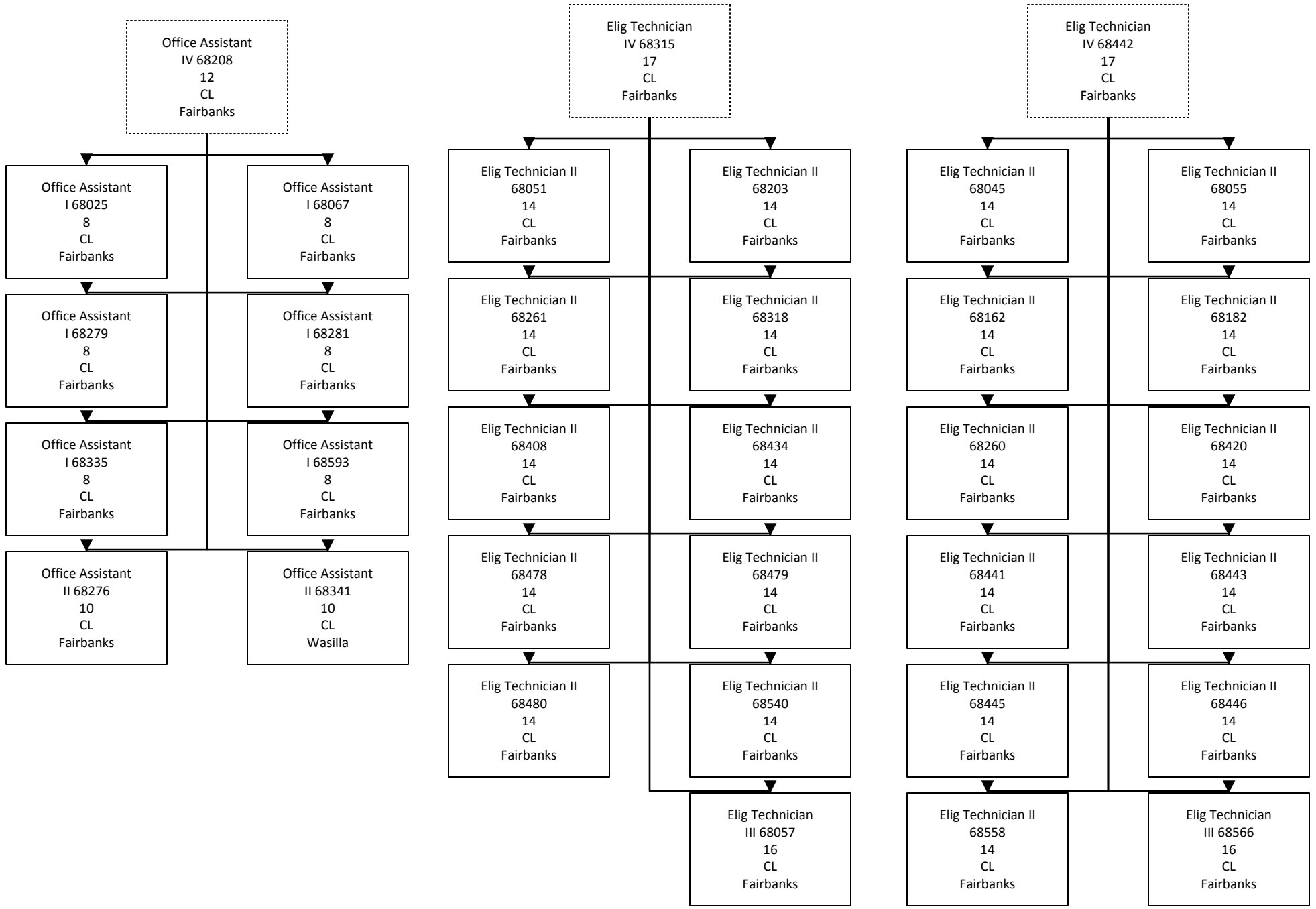
Total Component Months: 5,544.0

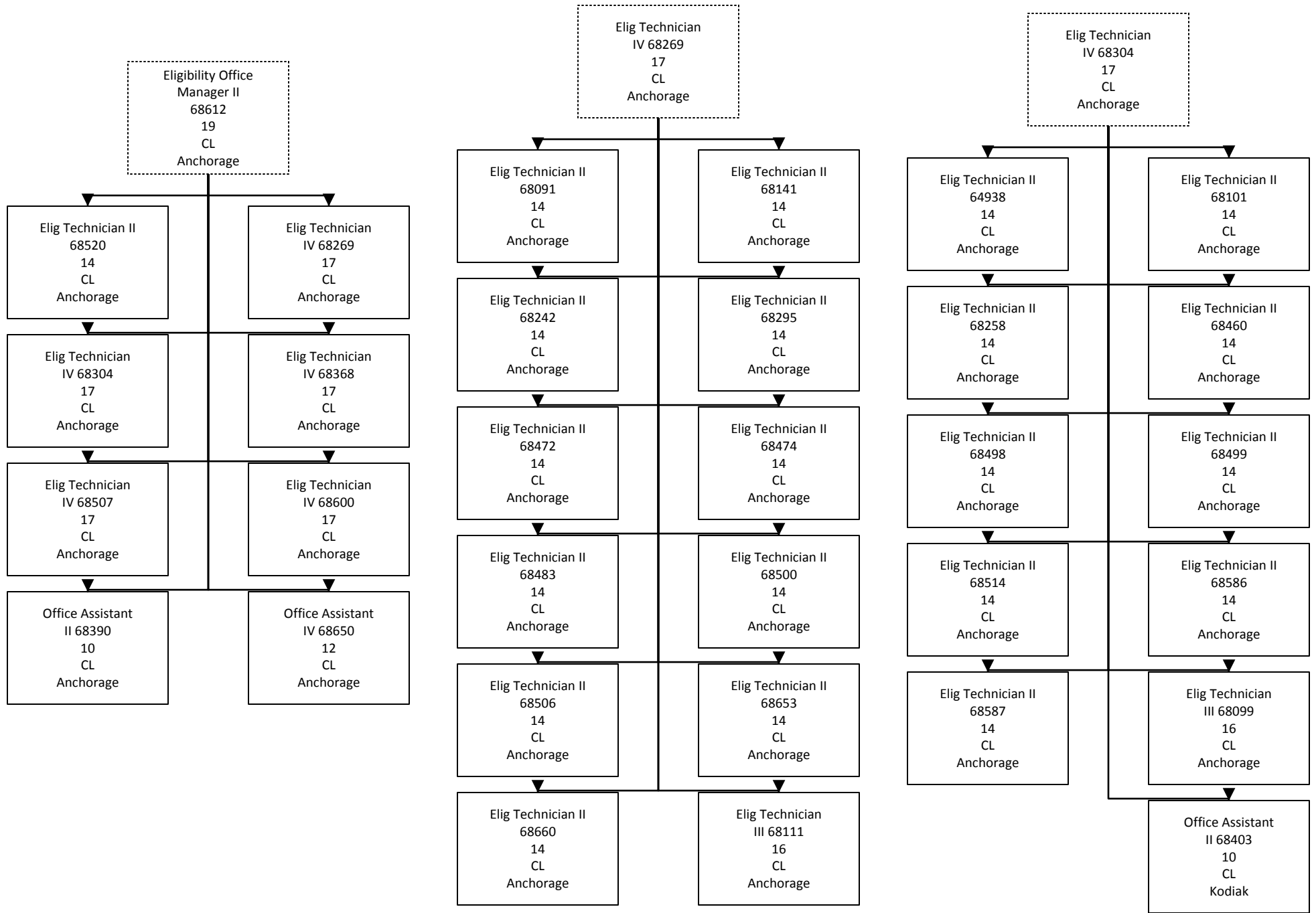
PCN Funding Sources:	Pre-Vacancy	Post-Vacancy	Percent
1002 Federal Receipts	22,723,466	21,167,479	51.52%
1003 General Fund Match	20,212,960	18,828,880	45.82%
1007 Interagency Receipts	1,122,603	1,045,733	2.55%
1108 Statutory Designated Program Receipts	50,465	47,009	0.11%
Total PCN Funding:	44,109,494	41,089,100	100.00%

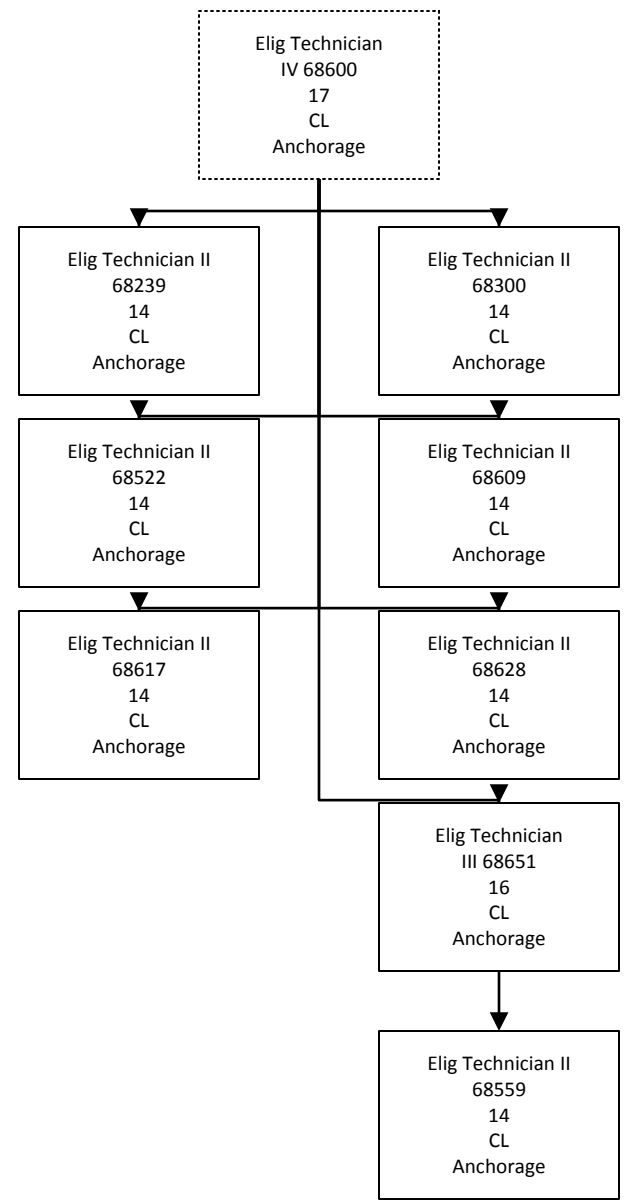
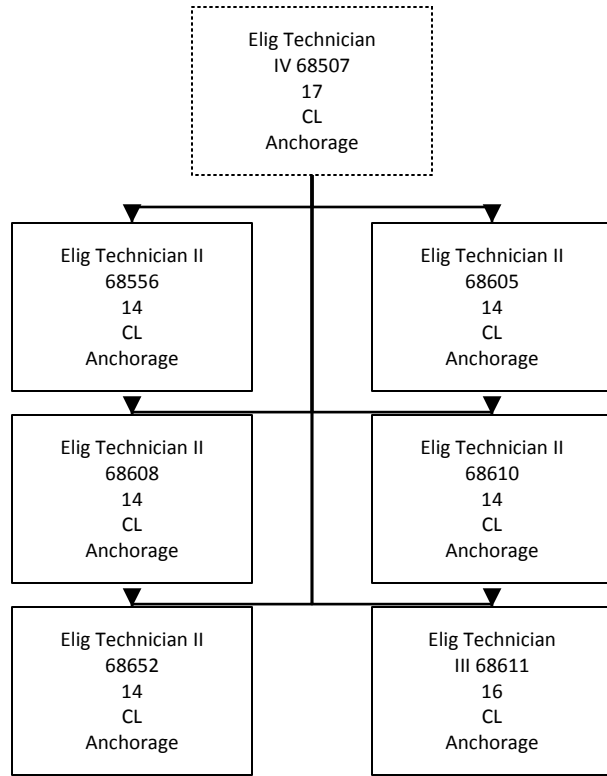
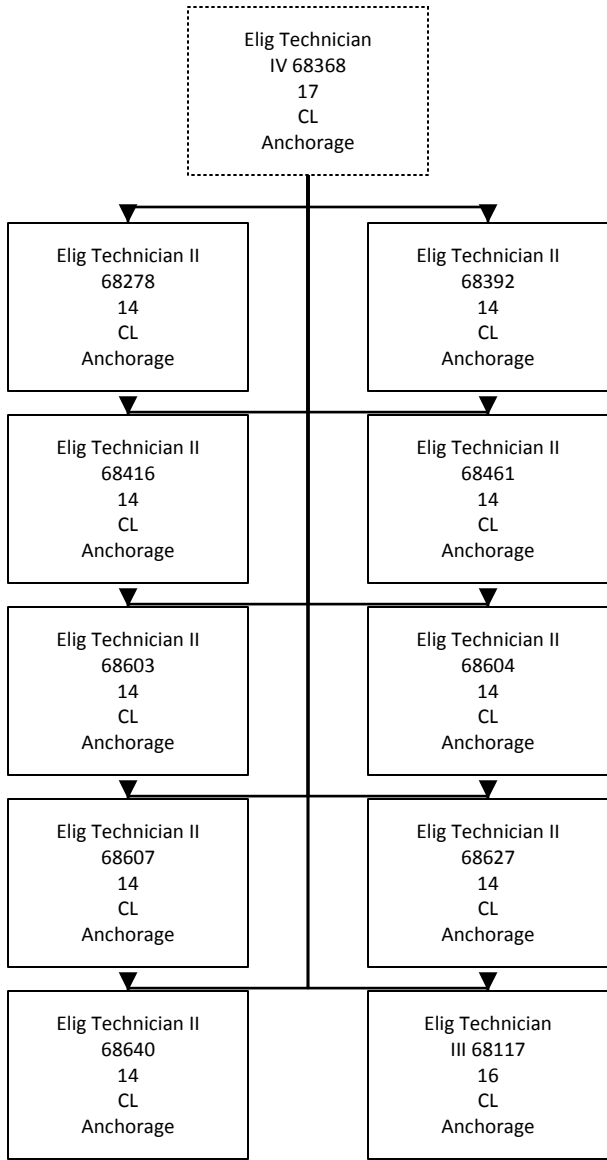
Note: If a position is split, an asterisk (*) will appear in the Split/Count column. If the split position is also counted in the component, two asterisks (**) will appear in this column. [No valid job title] appearing in the Job Class Title indicates that the PCN has an invalid class code or invalid range for the class code effective date of this scenario.

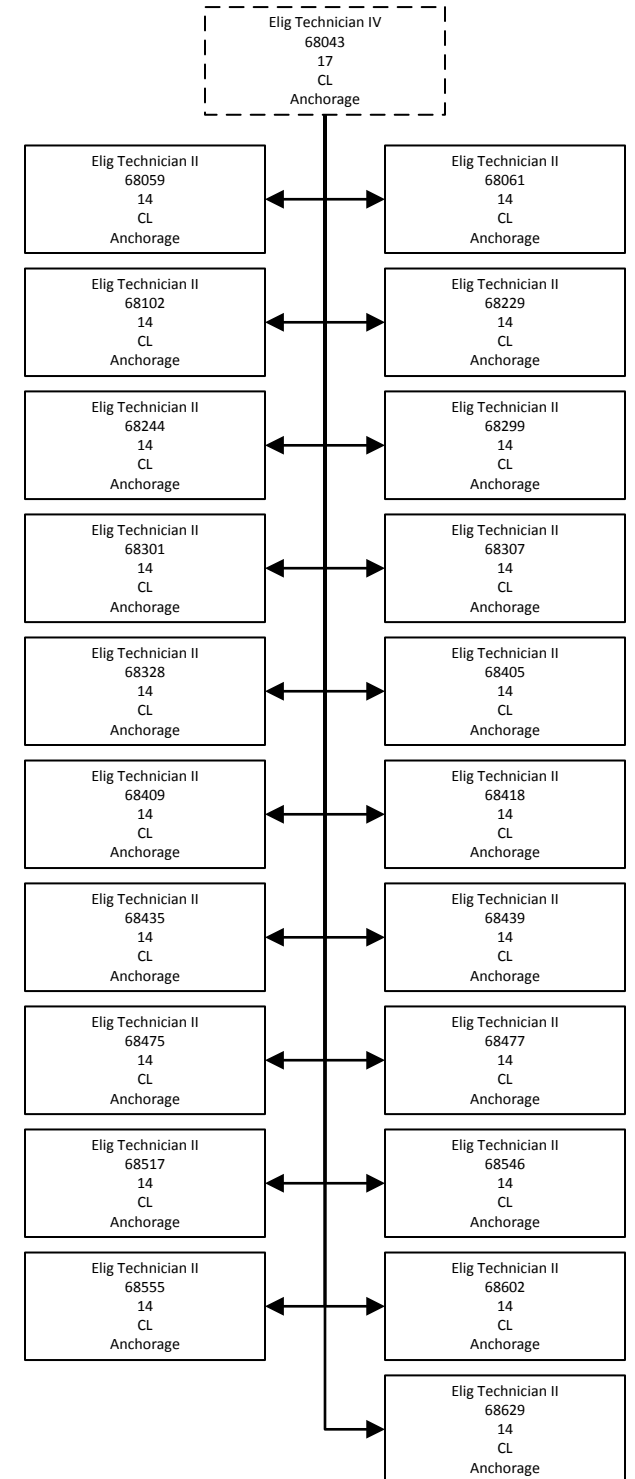
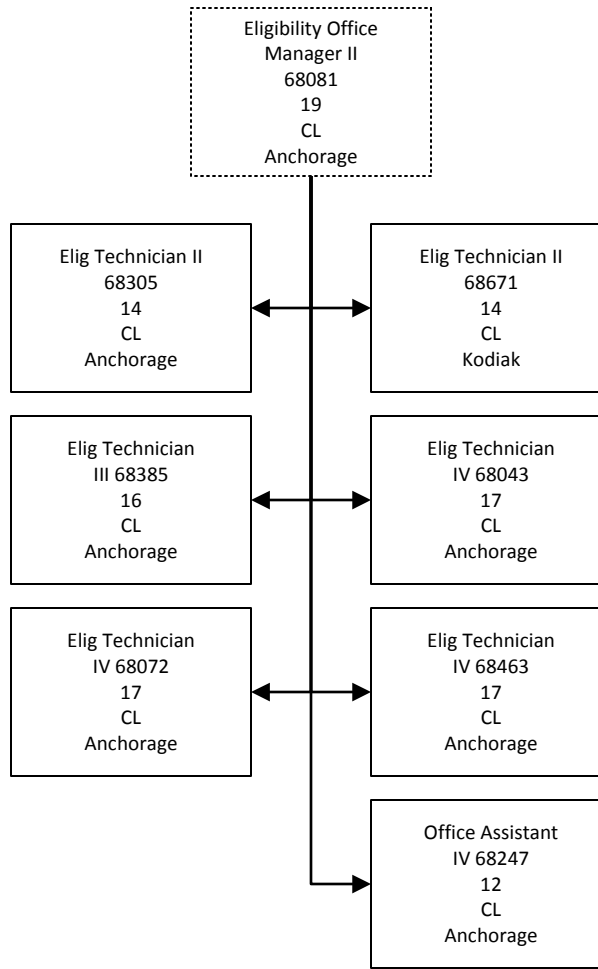
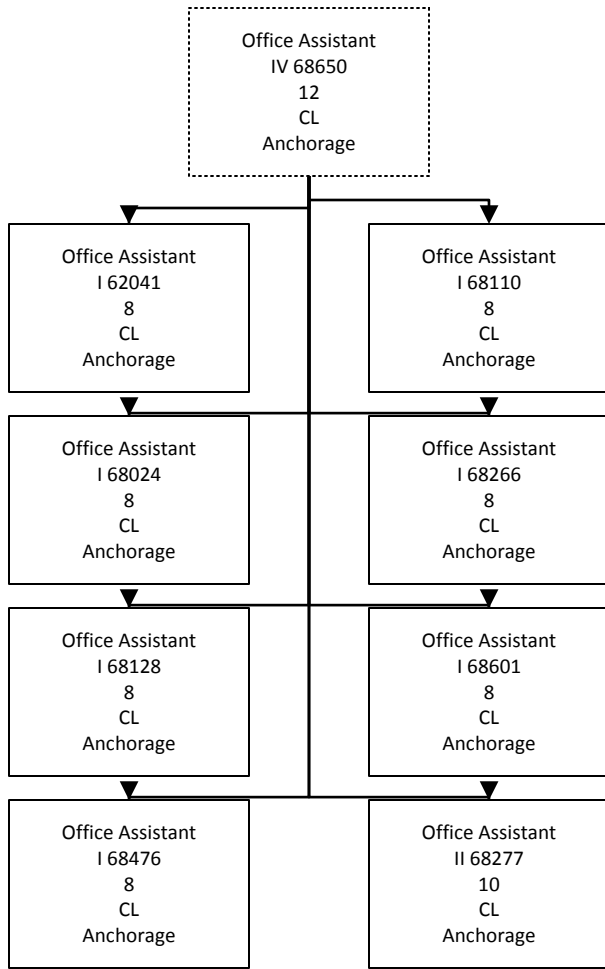


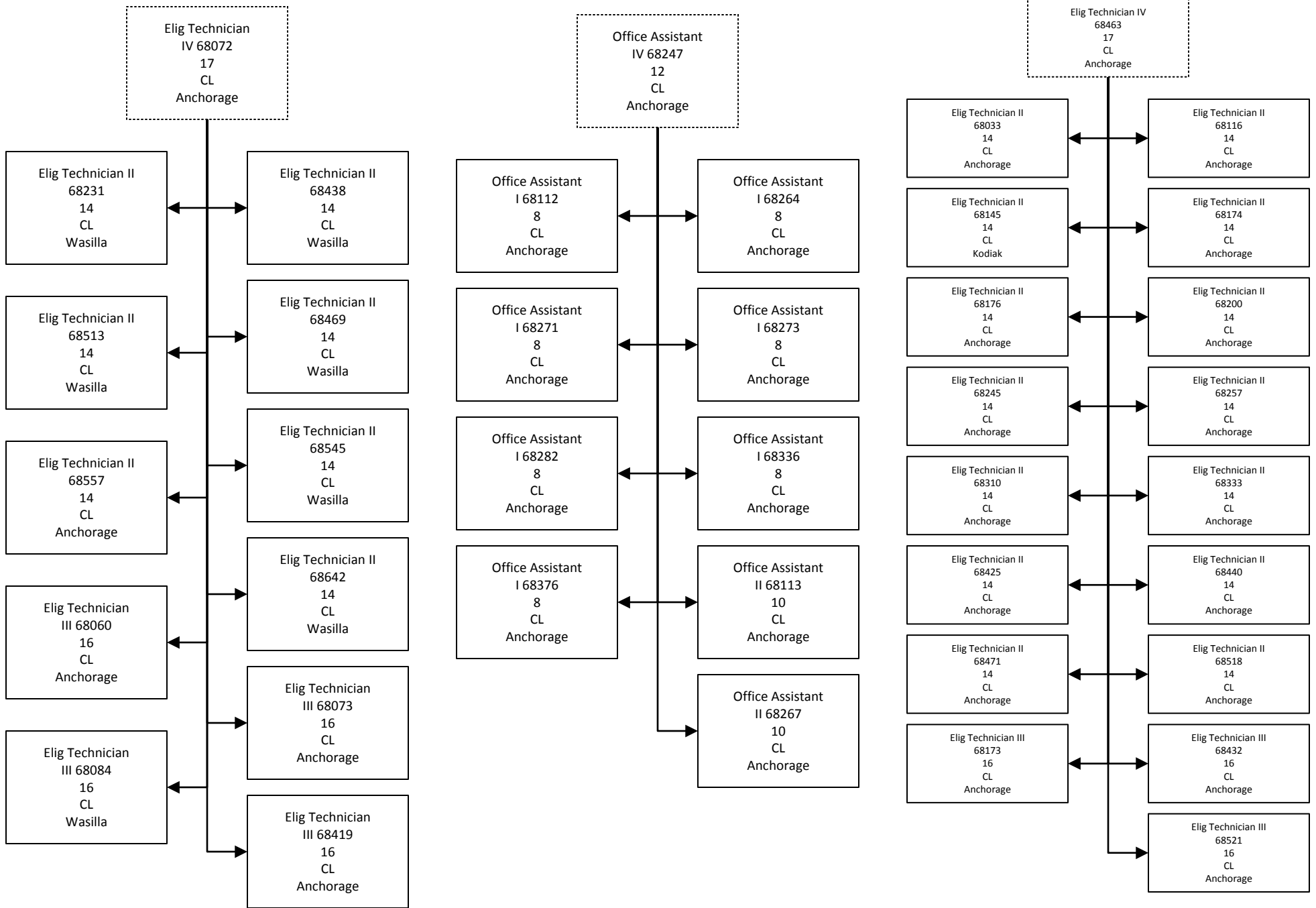


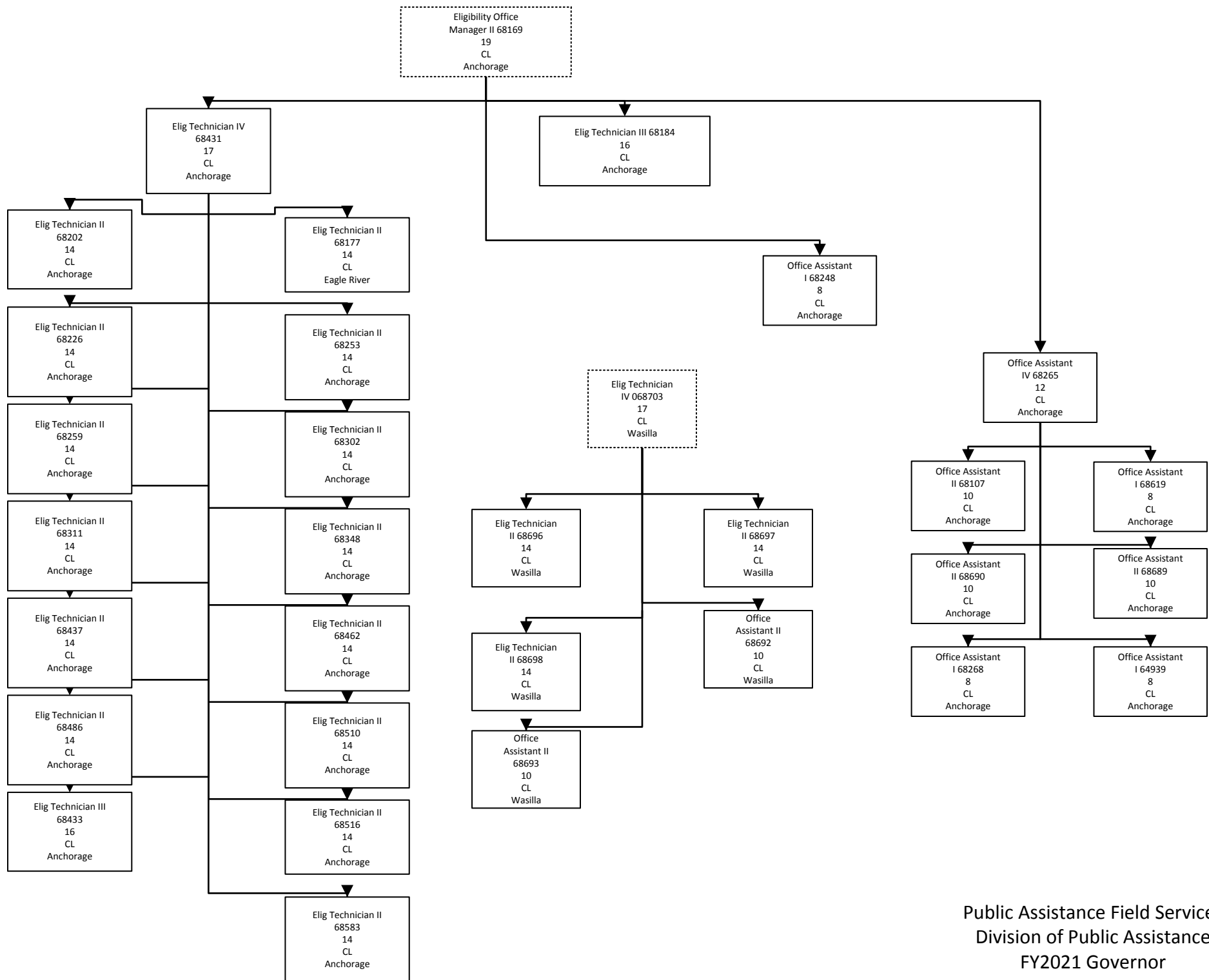


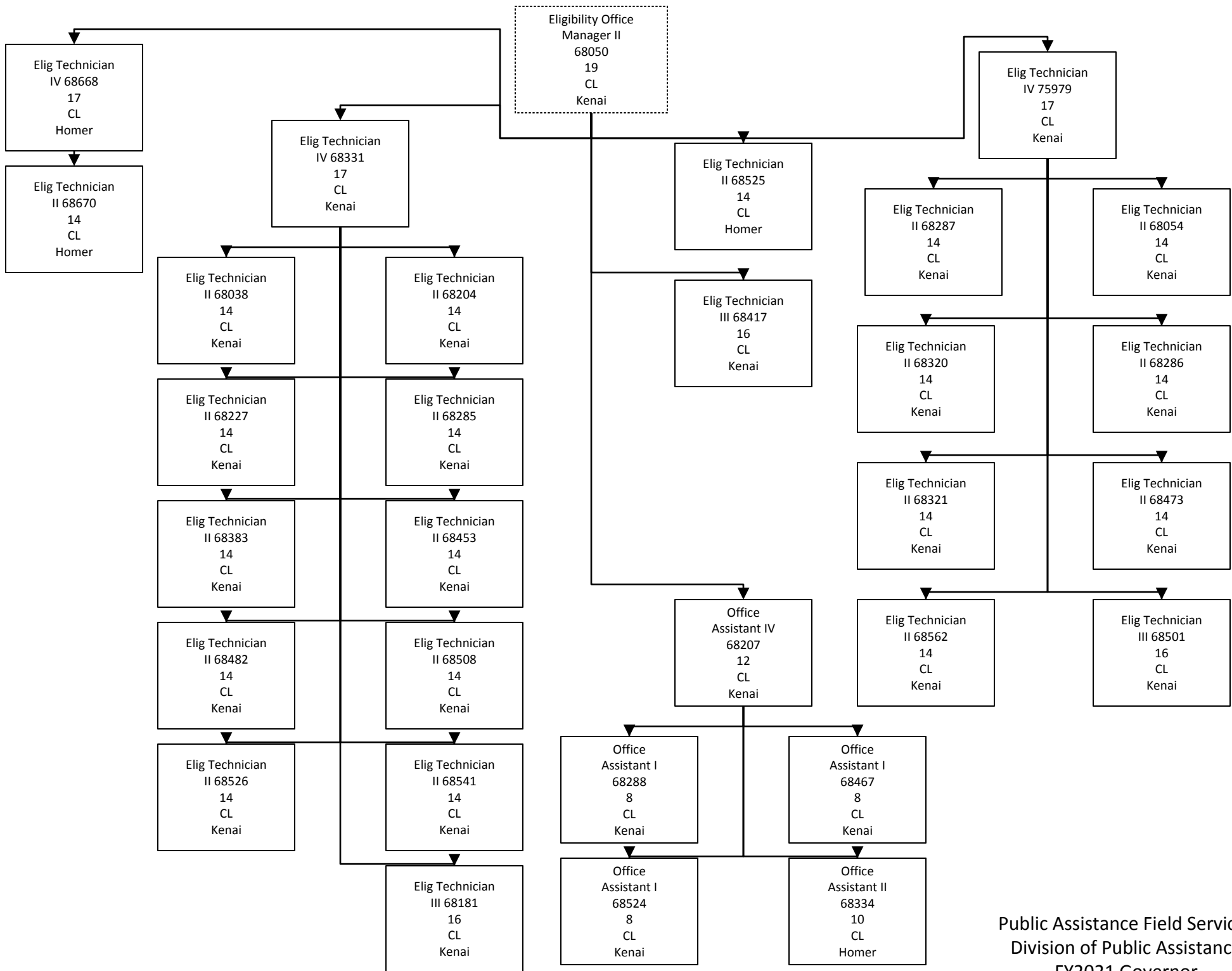


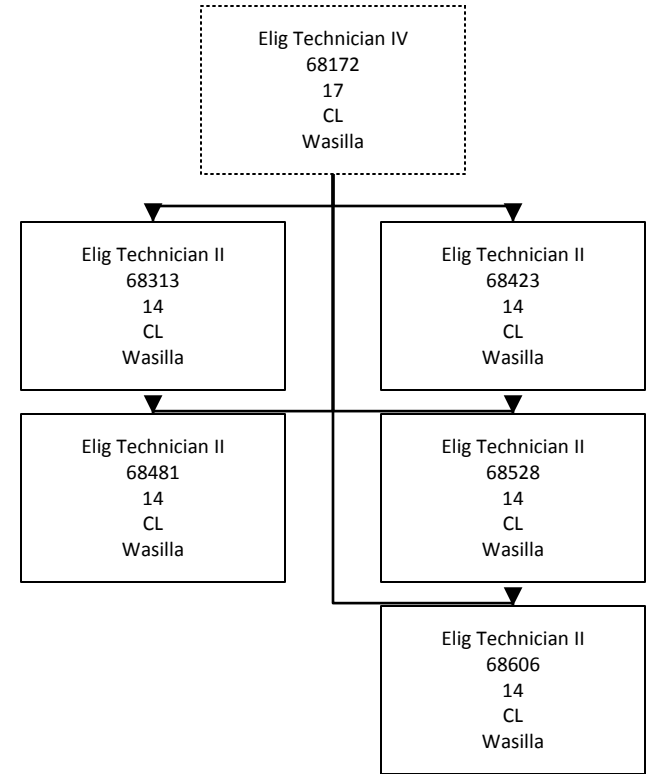
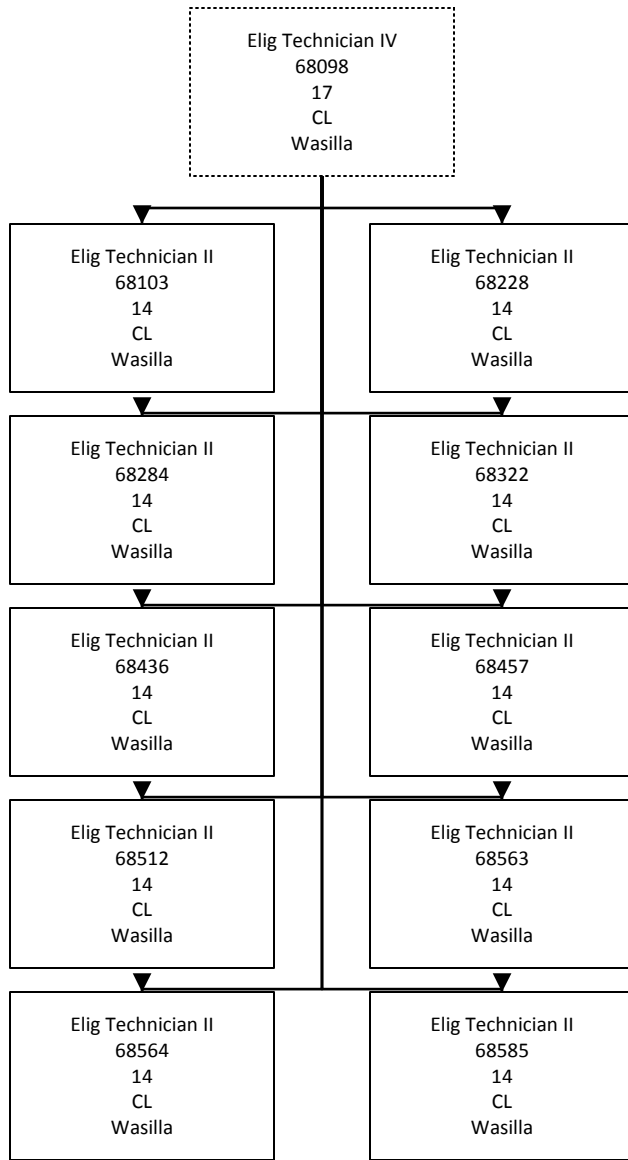
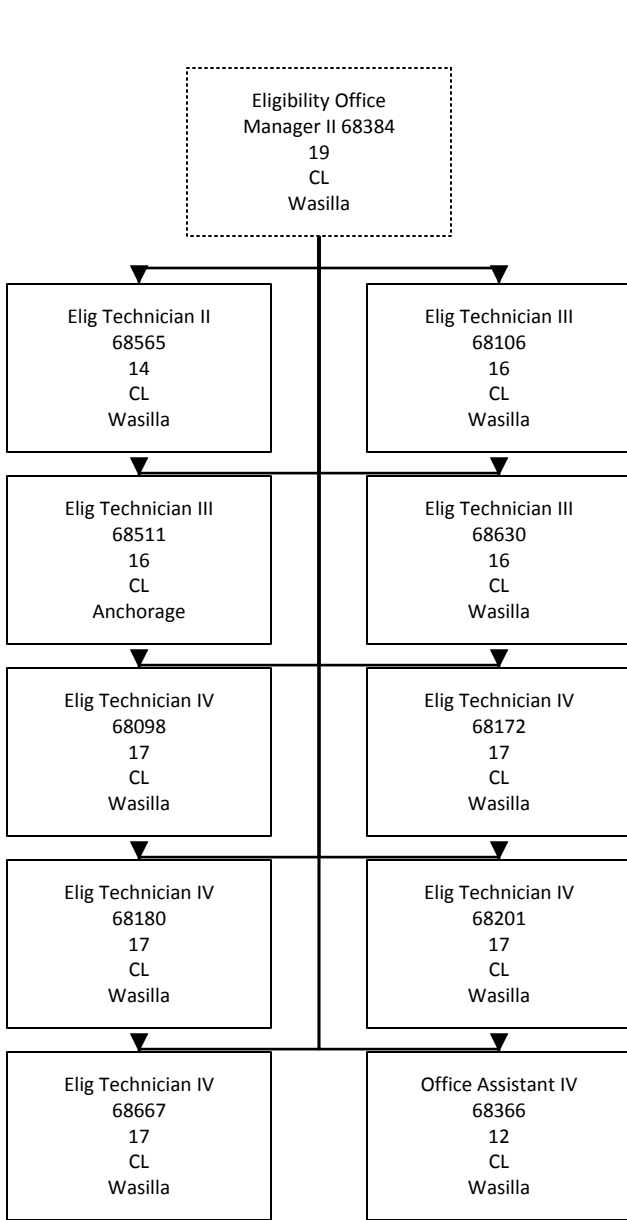


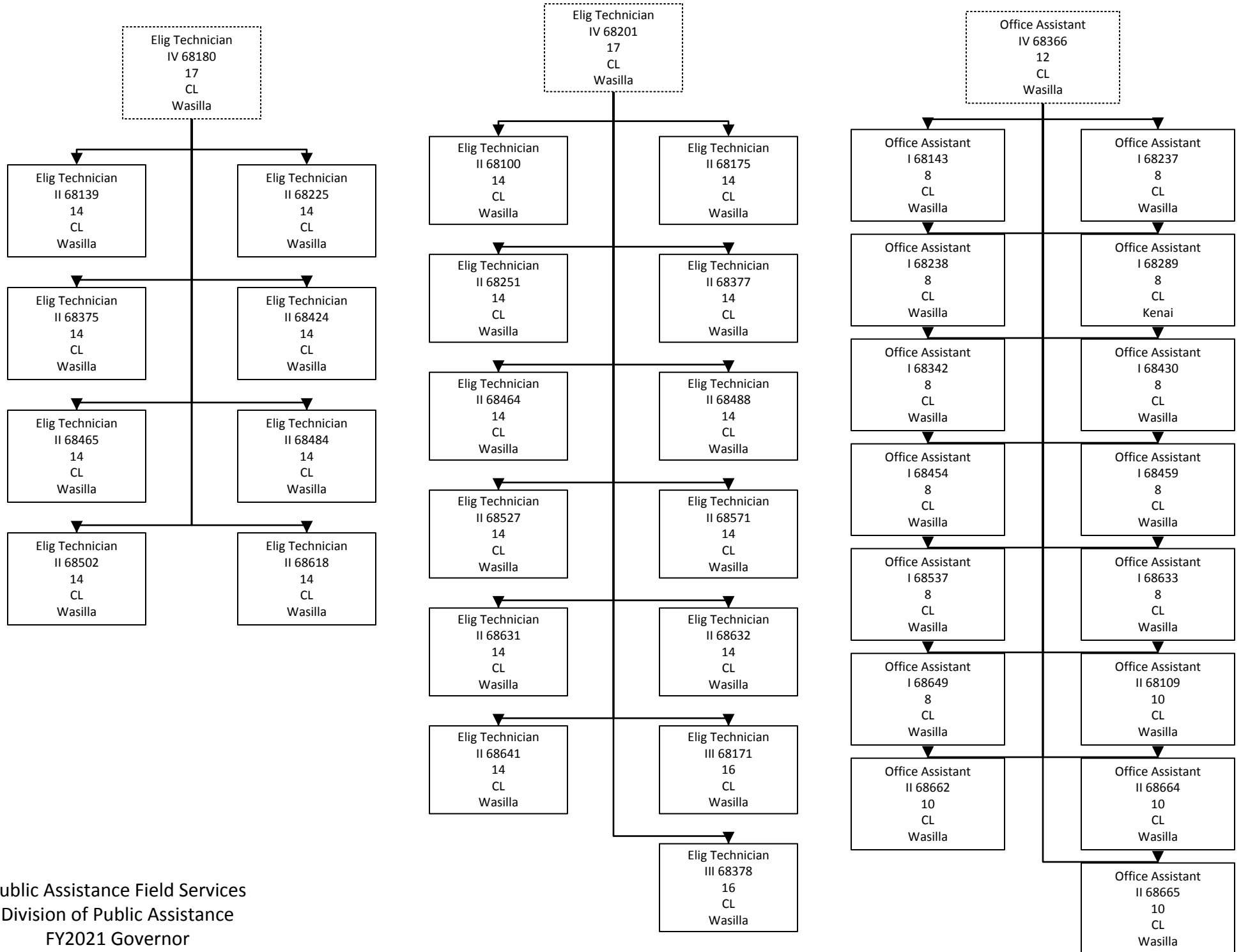


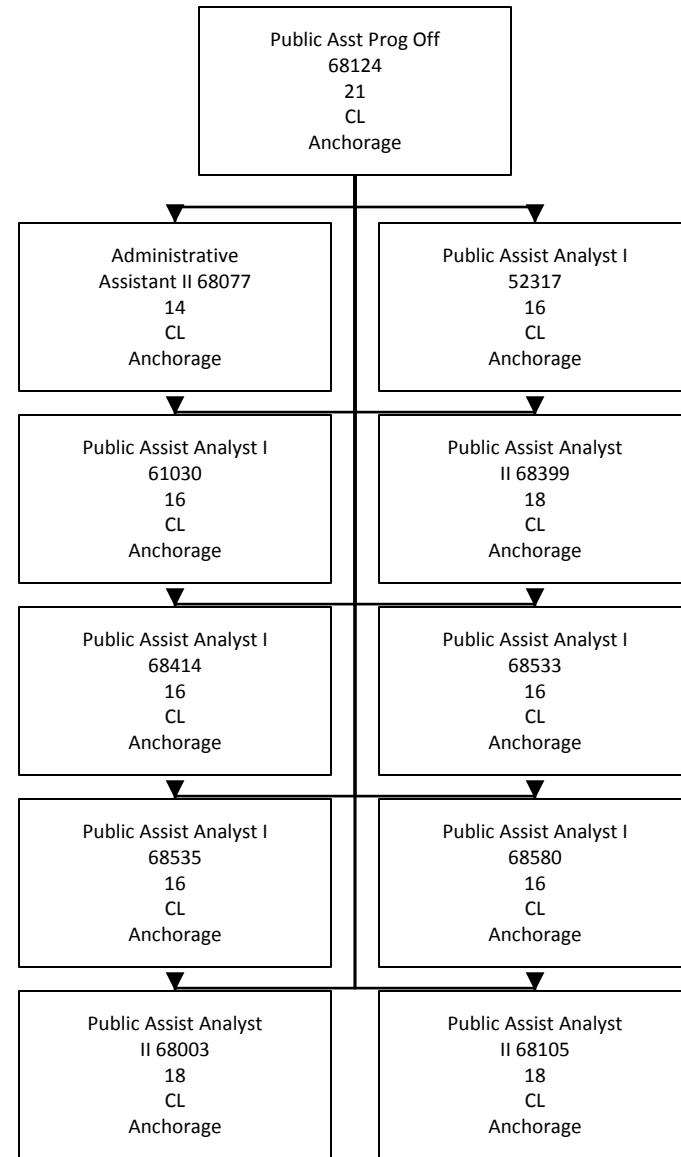
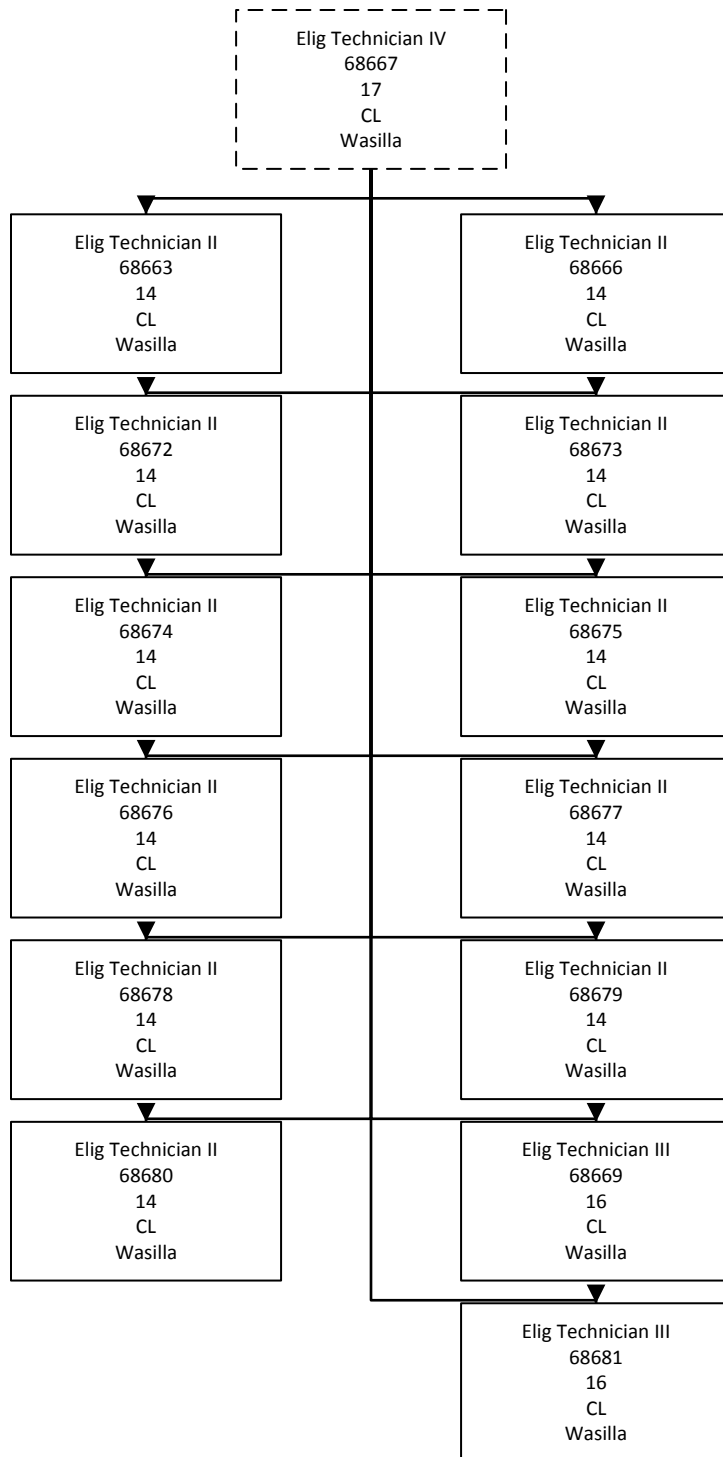


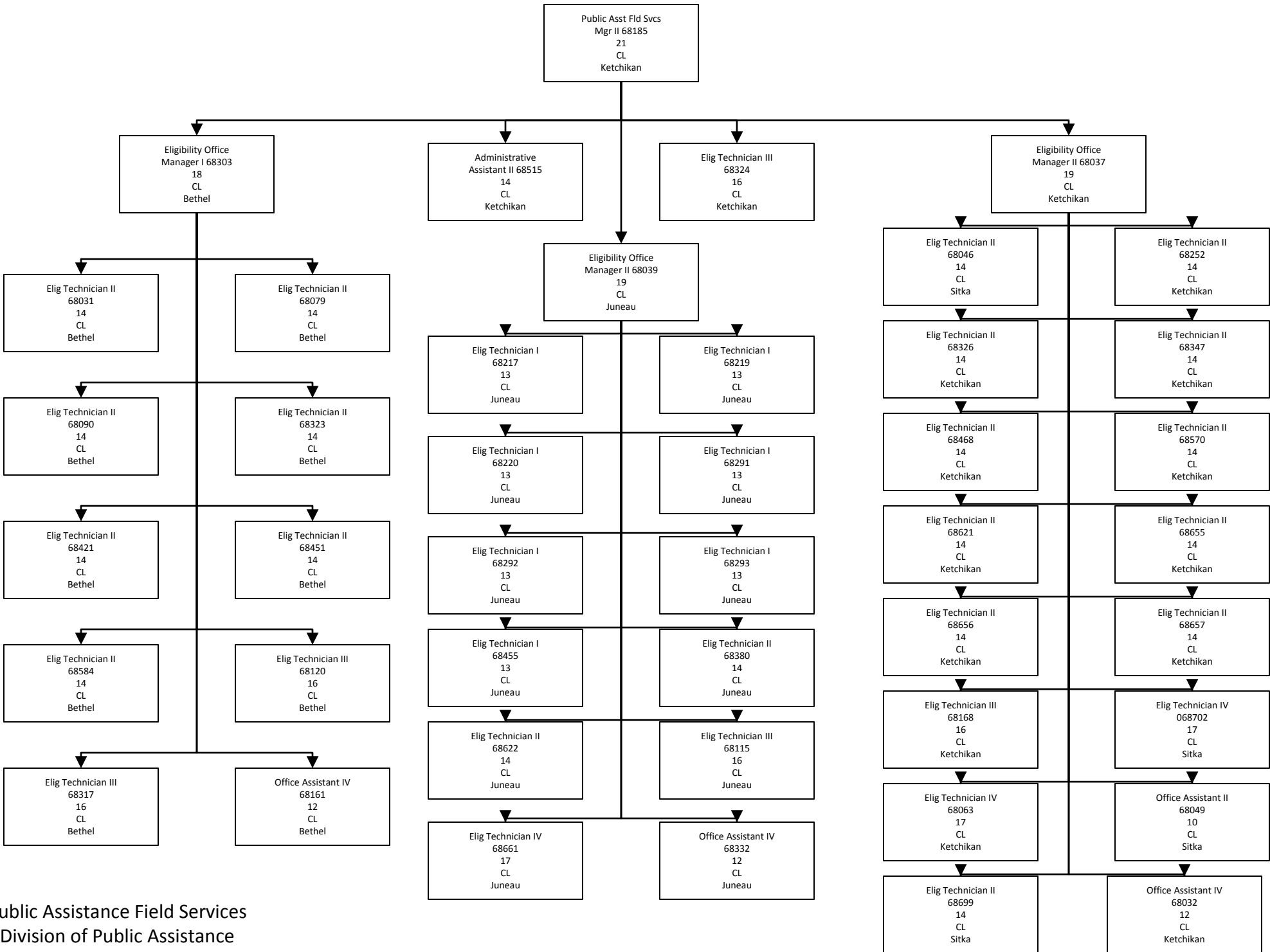


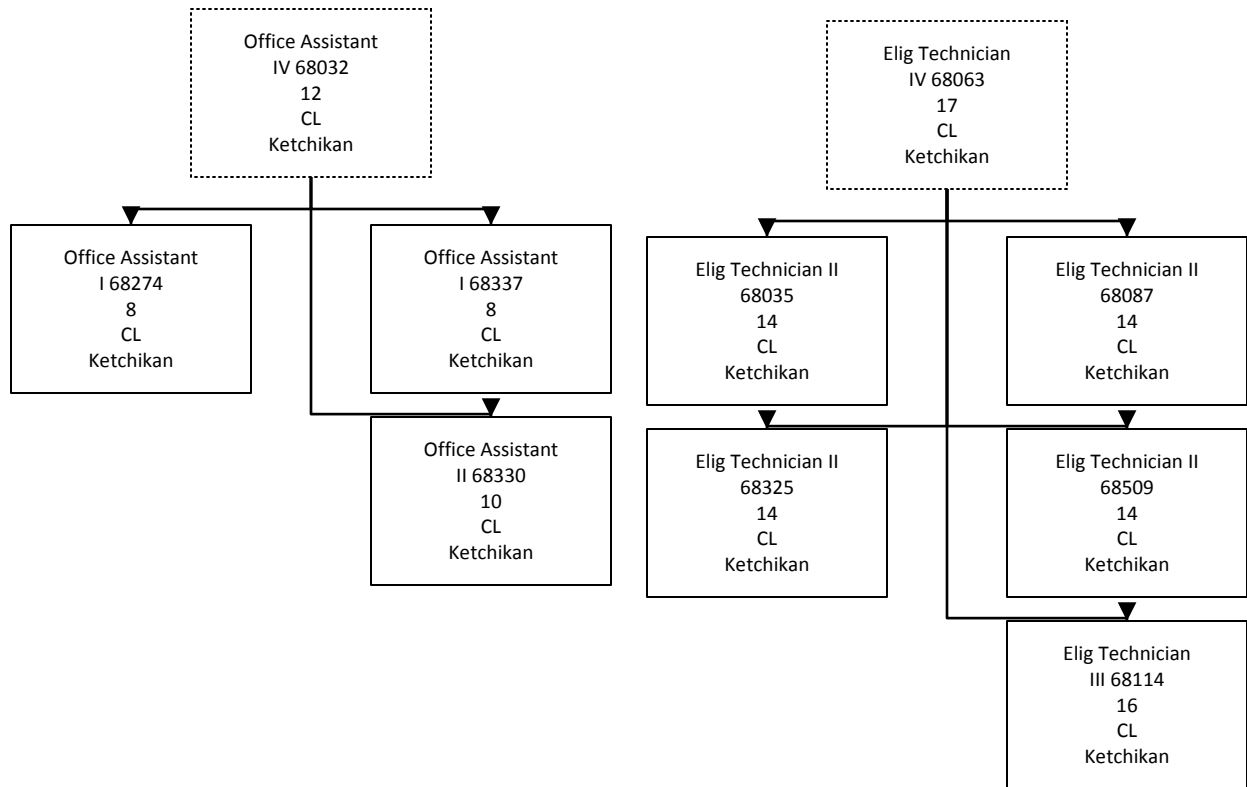


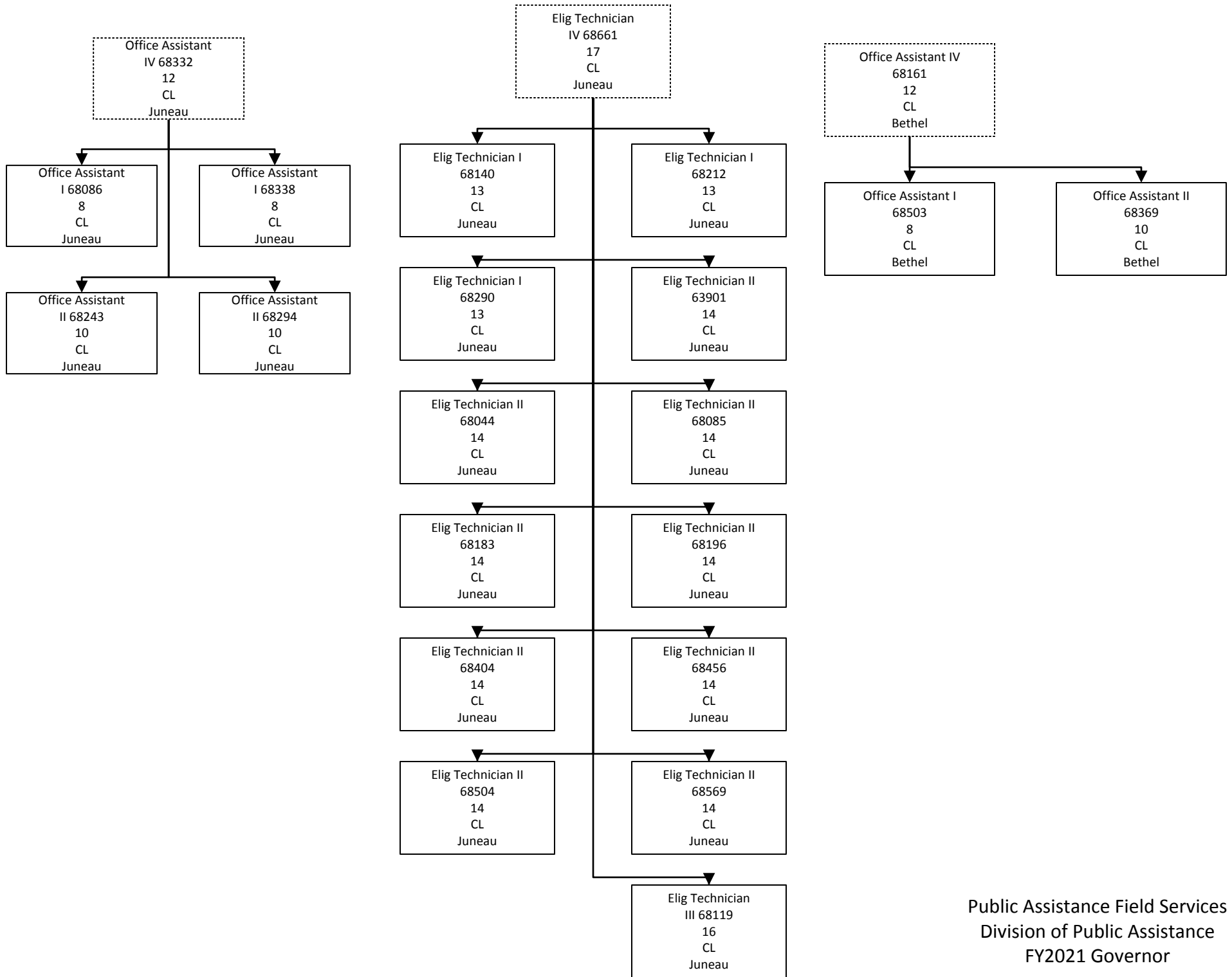












Public Assist Prog
Officer 68028
21
CL
Juneau

