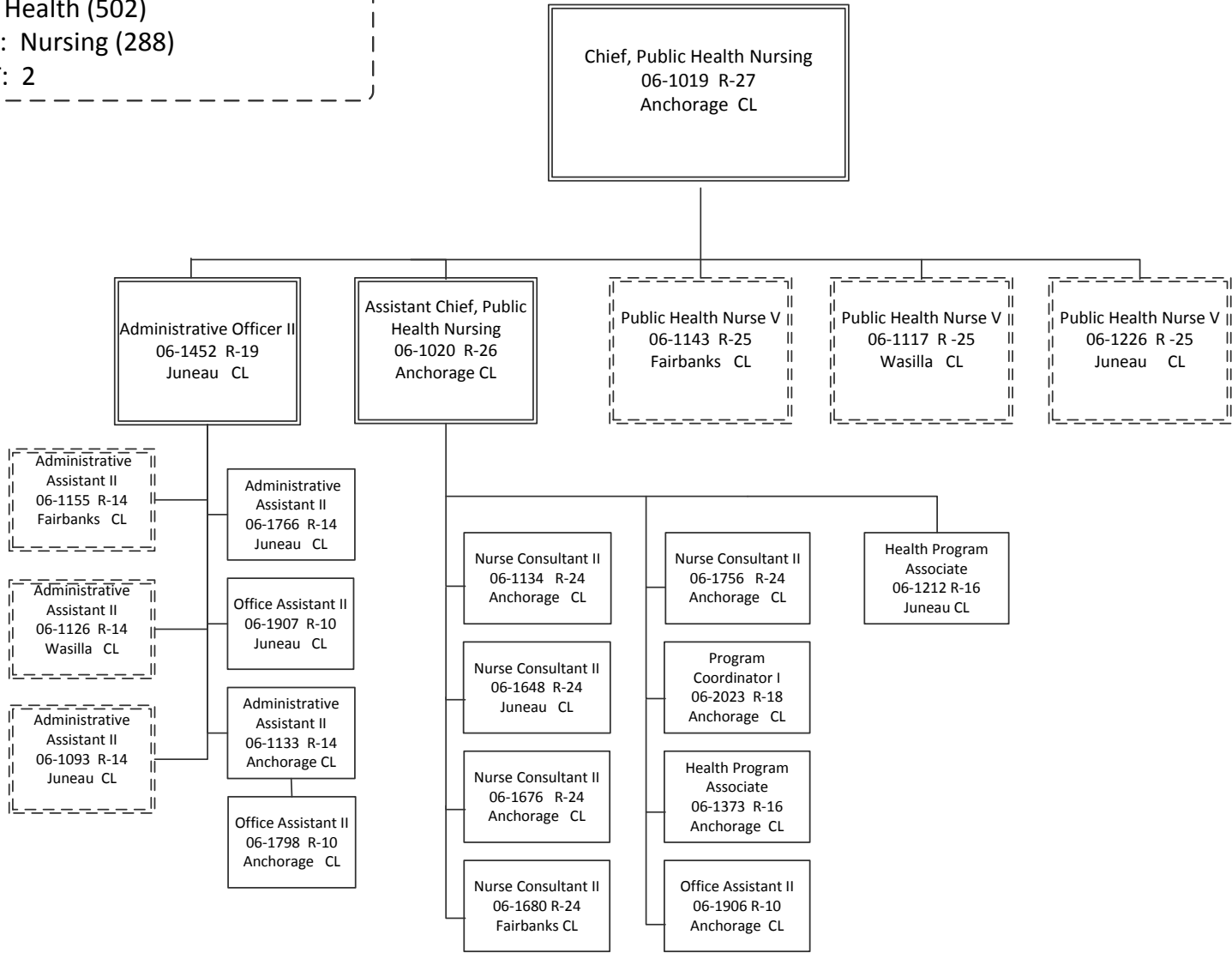


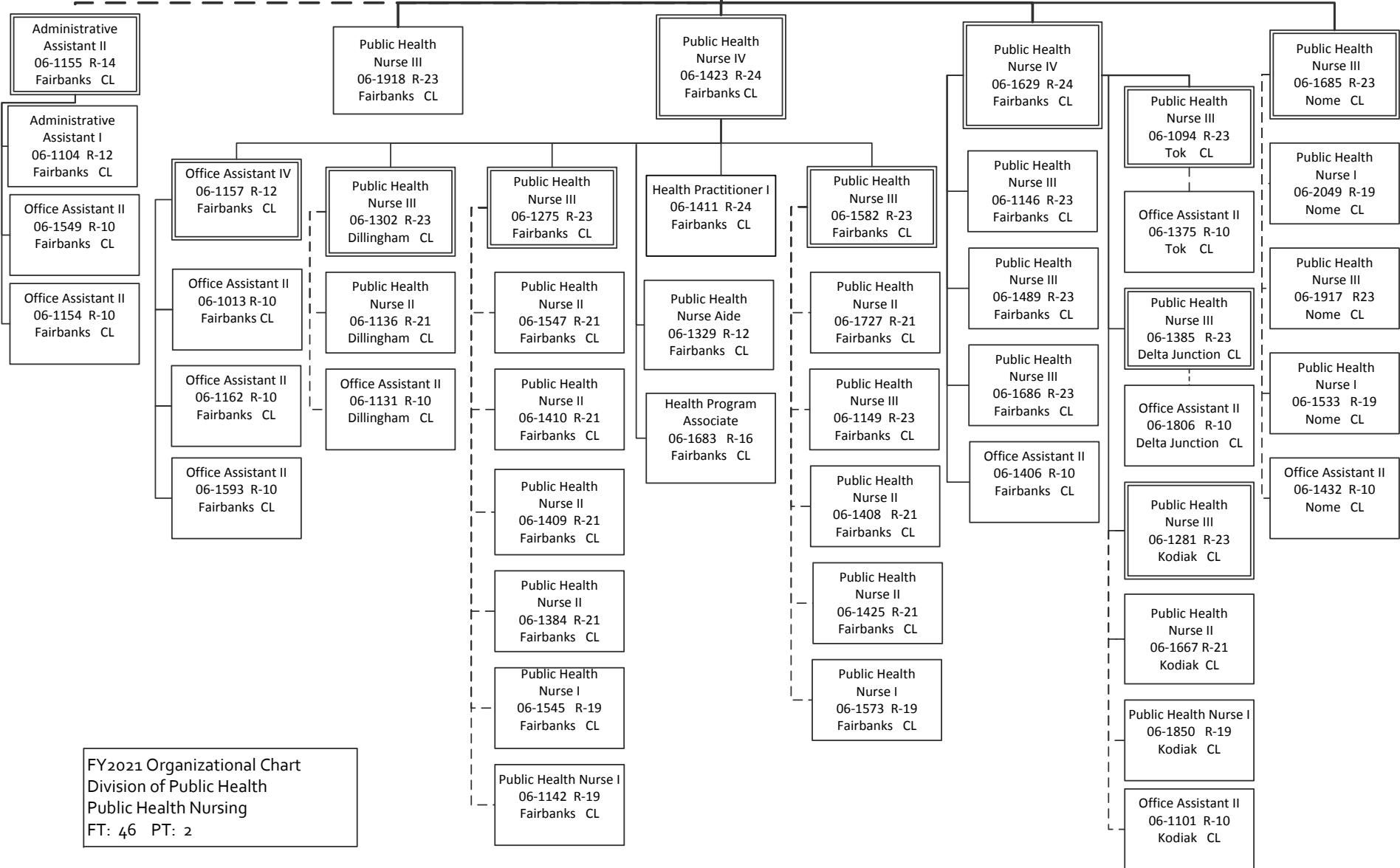
Department of Health and Social Services  
 RDU: Public Health (502)  
 Component: Nursing (288)  
 FT: 157 PT: 2



FY2021 Organizational Chart  
 Division of Public Health  
 Public Health Nursing  
 FT: 16 PT: 0

Department of Health and Social Services  
 RDU: Public Health (502)  
 Component: Nursing (288)  
 FT: 157 PT: 2

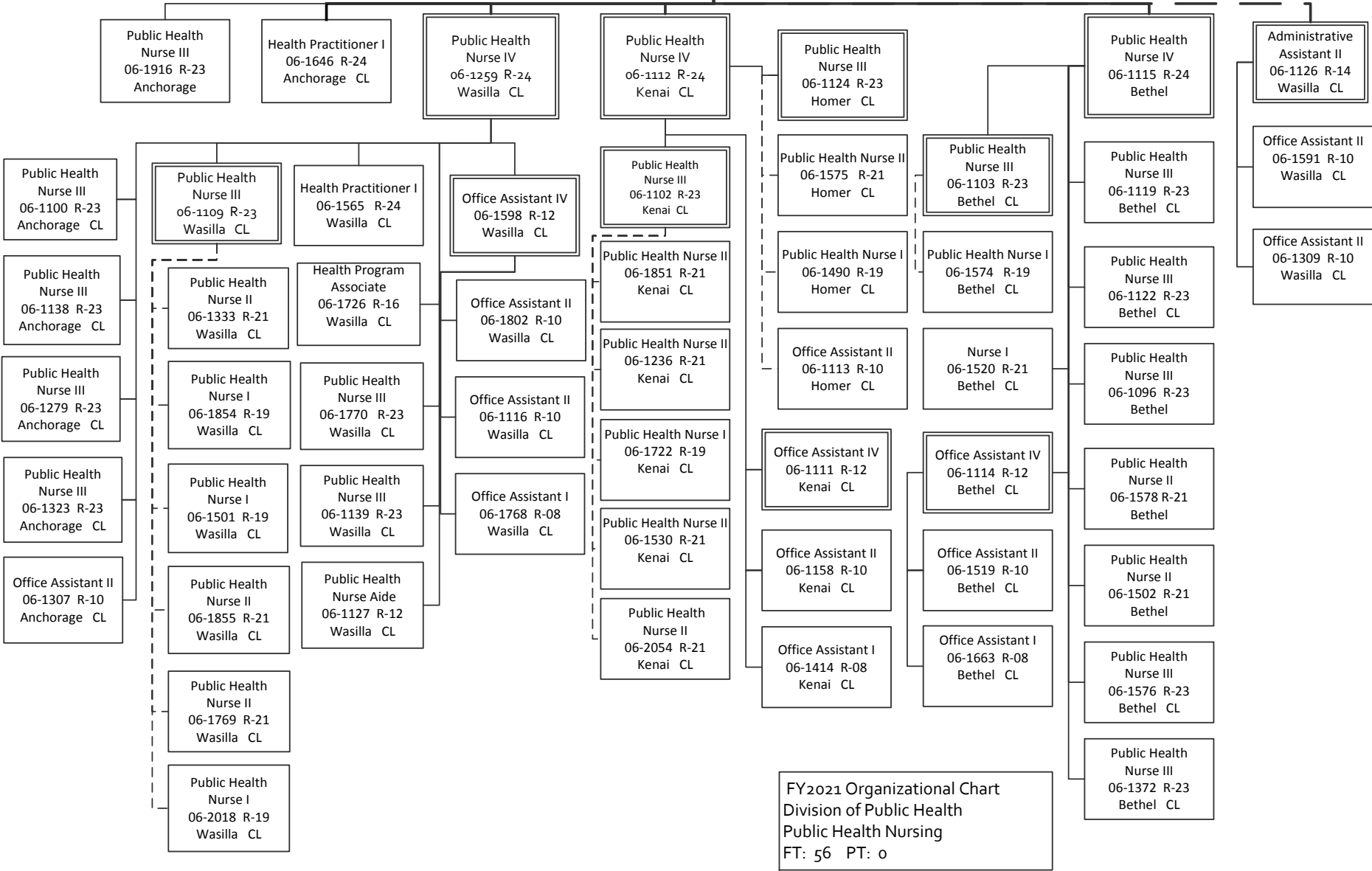
Public Health Nurse V  
 06-1143 R-25  
 Fairbanks CL



FY2021 Organizational Chart  
 Division of Public Health  
 Public Health Nursing  
 FT: 46 PT: 2

Department of Health and Social Services  
 RDU: Public Health (502)  
 Component: Nursing (288)  
 FT: 157 PT: 2

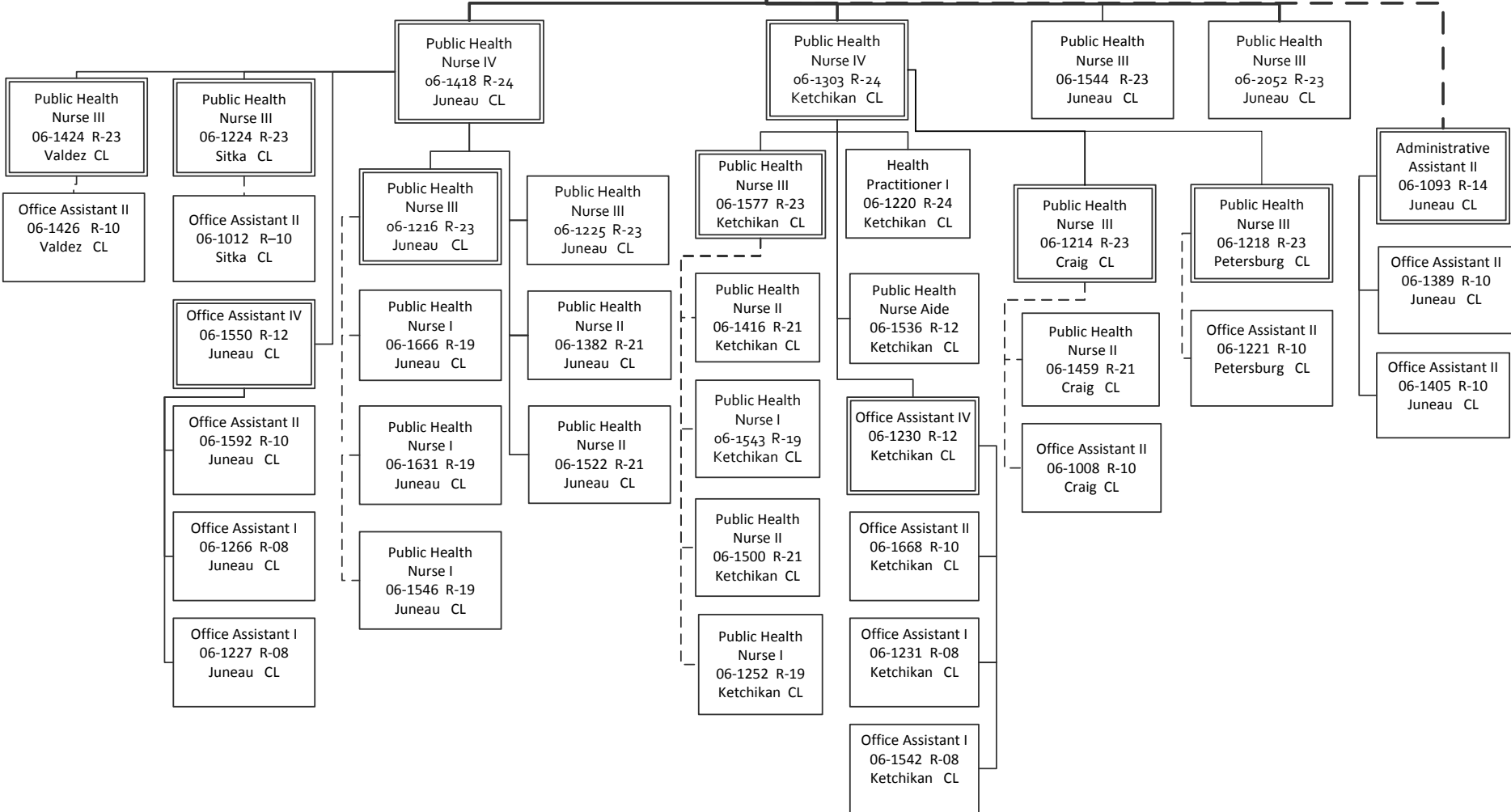
Public Health Nurse V  
 06-1117 R-25  
 Wasilla CL



FY2021 Organizational Chart  
 Division of Public Health  
 Public Health Nursing  
 FT: 56 PT: 0

Department of Health and Social Services  
 RDU: Public Health (502)  
 Component: Nursing (288)  
 FT: 157 PT: 2

Public Health Nurse V  
 06-1226 R-25  
 Juneau CL



FY2021 Organizational Chart  
 Division of Public Health  
 Public Health Nursing  
 FT: 39 PT: 0