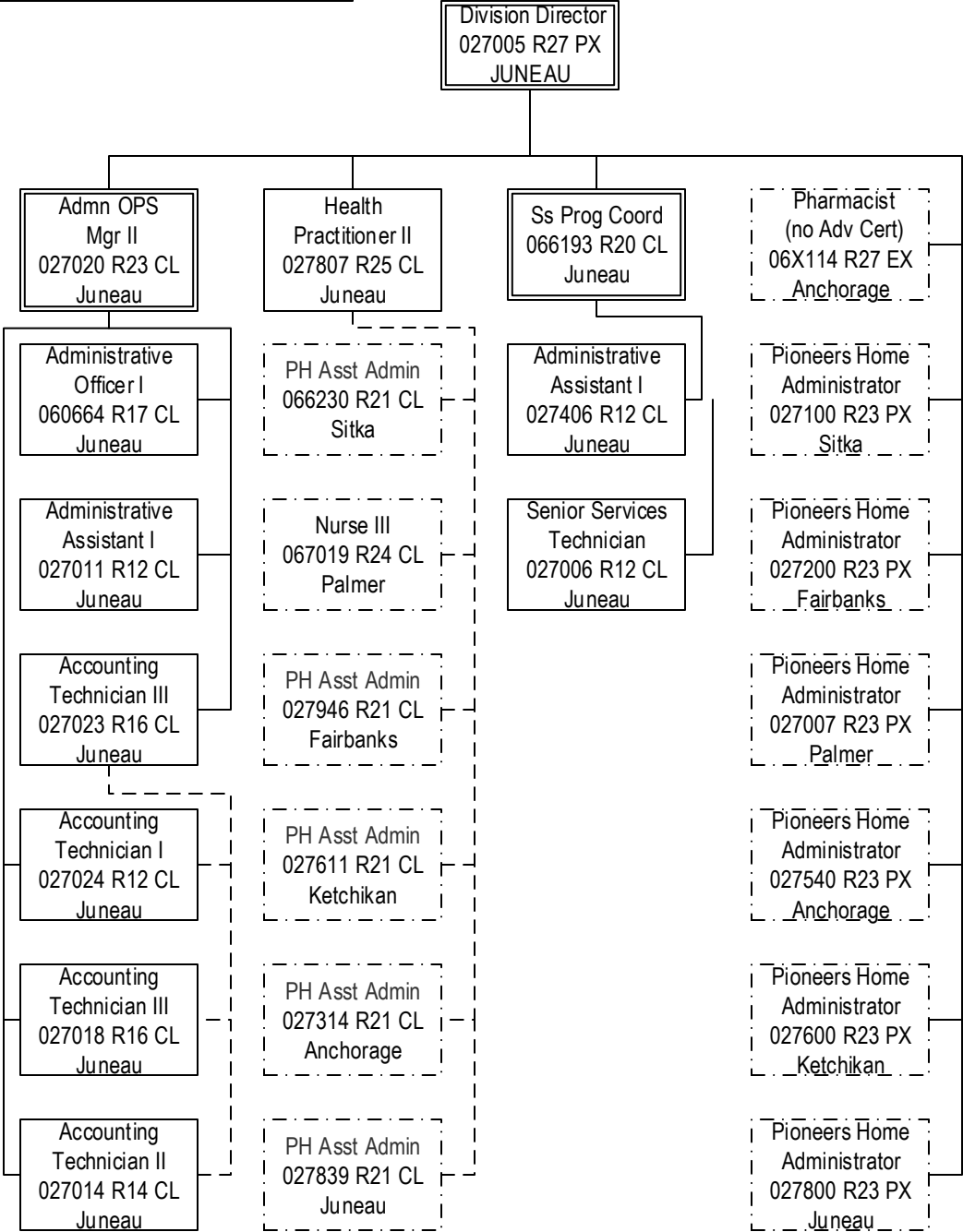


PCN Count  
Total: 454  
FT: 421  
NP: 18  
PT: 15

**Department of Health and Social Services**  
**Division of Alaska Pioneer Homes**  
**Central Office**  
**Alaska Pioneer Homes Management Component**



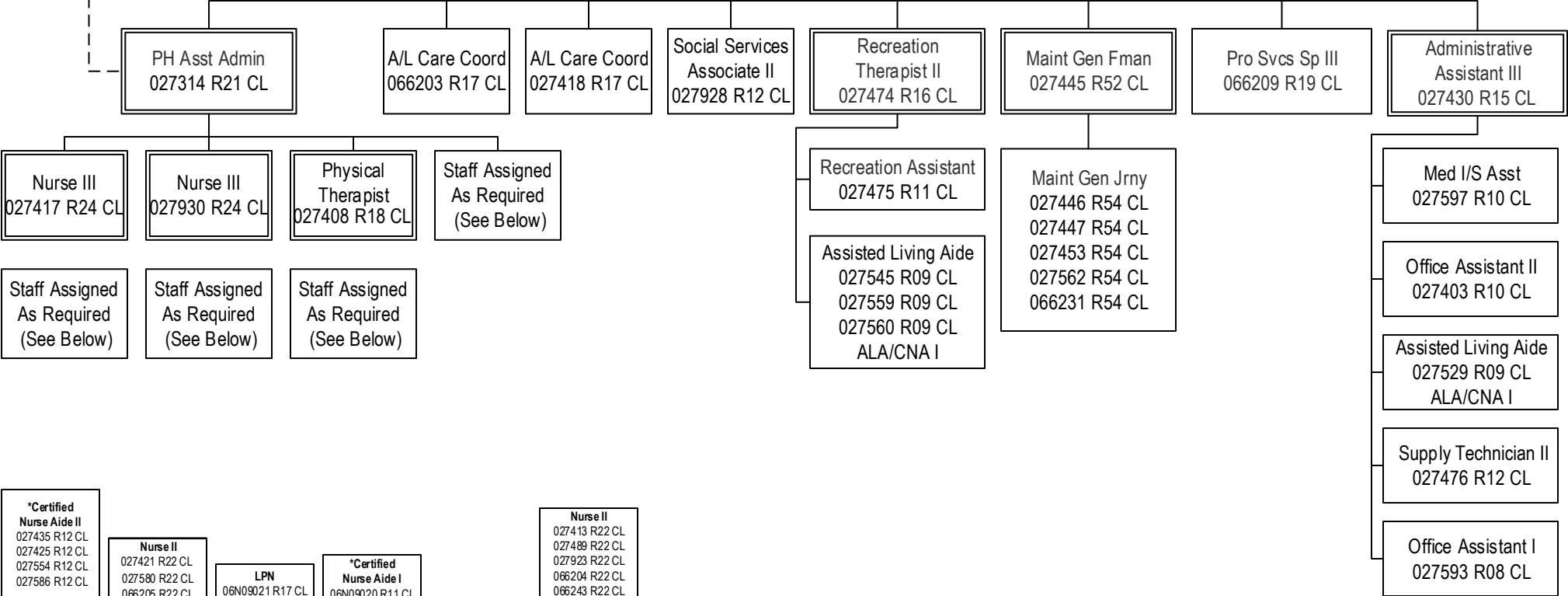
PCN Count  
 Total: 12  
 FT: 12  
 NP: 0  
 PT: 0

**Department of Health and Social Services**  
**Division of Alaska Pioneer Homes**  
**Anchorage Pioneer Home**  
**Pioneer Homes Component**

Health Practitioner II  
027807 R25 CL  
JUNEAU

PIONEERS HOME  
ADMINISTRATOR  
027540 R23 PX

Contract Facility  
Executive Manager



**\*Certified Nurse Aide II**  
027435 R12 CL  
027425 R12 CL  
027554 R12 CL  
027586 R12 CL

**Nurse II**  
027421 R22 CL  
027580 R22 CL  
066206 R22 CL

**LPN**  
06N09021 R17 CL

**\*Certified Nurse Aide I**  
06N09020 R11 CL

**\*Certified Nurse Aide I**  
027405 R11 CL  
027411 R11 CL  
027419 R11 CL  
027422 R11 CL  
027423 R11 CL  
027424 R11 CL  
027427 R11 CL  
027428 R11 CL  
027429 R11 CL  
027431 R11 CL  
027432 R11 CL  
027433 R11 CL  
027434 R11 CL  
027436 R11 CL  
ALA/CNA I

**\*Certified Nurse Aide I**  
027437 R11 CL  
027438 R11 CL  
027439 R11 CL  
027443 R11 CL  
027452 R11 CL  
027455 R11 CL  
027456 R11 CL  
027462 R11 CL  
027463 R11 CL  
027464 R11 CL  
027467 R11 CL  
027470 R11 CL  
027477 R11 CL  
027478 R11 CL  
ALA/CNA I

**\*Certified Nurse Aide I**  
027484 R11 CL  
027486 R11 CL  
027487 R11 CL  
027488 R11 CL  
027496 R11 CL  
027499 R11 CL  
027542 R11 CL  
027548 R11 CL  
027549 R11 CL  
027550 R11 CL  
027551 R11 CL  
027552 R11 CL  
027553 R11 CL  
027555 R11 CL  
ALA/CNA I

**\*Certified Nurse Aide I**  
027556 R11 CL  
027557 R11 CL  
027573 R11 CL  
027579 R11 CL  
027582 R11 CL  
027583 R11 CL  
027584 R11 CL  
027585 R11 CL  
027587 R11 CL  
027588 R11 CL  
027589 R11 CL  
027590 R11 CL  
027591 R11 CL  
027592 R11 CL  
ALA/CNA I

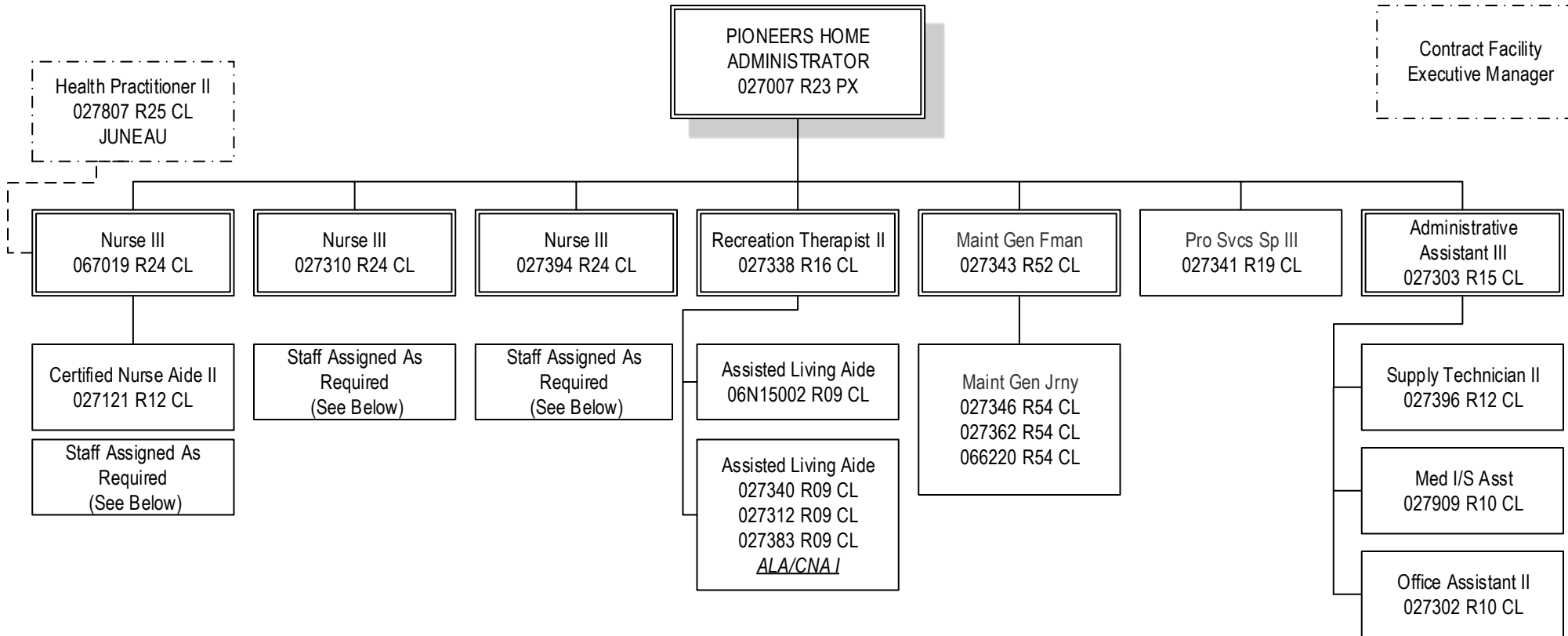
**\*Certified Nurse Aide I**  
027594 R11 CL  
027919 R11 CL  
027924 R11 CL  
027925 R11 CL  
027953 R11 CL  
027956 R11 CL  
066079 R11 CL  
066120 R11 CL  
066129 R11 CL  
066161 R11 CL  
066200 R11 CL  
066201 R11 CL  
066207 R11 CL  
ALA/CNA I

**Nurse II**  
027413 R22 CL  
027489 R22 CL  
027925 R22 CL  
066204 R22 CL  
066243 R22 CL  
**Nurse I**  
027541 R21 CL  
**Licensed Practical Nurse**  
027415 R17 CL  
027576 R17 CL  
027547 R17 CL  
066194 R17 CL  
027416 R17 CL  
027420 R17 CL  
027546 R17 CL  
027581 R17 CL  
027921 R17 CL  
027577 R17 CL  
027543 R17 CL  
027955 R17 CL  
066222 R17 CL  
LPN/Nurse III

PCN Count  
Total: 124  
FT: 118  
NP: 2  
PT: 4

Bed Count: 168  
All positions located in Anchorage unless otherwise noted  
\* Positions point to Assistant Administrator

**Department of Health and Social Services**  
**Division of Alaska Pioneer Homes Alaska**  
**Veterans and Pioneers Home Palmer**  
**Pioneer Homes Component**



<p><b>*Certified Nurse Aide I</b>                  027304 R11 CL                  027305 R11 CL                  027307 R11 CL                  027309 R11 CL                  027313 R11 CL                  027317 R11 CL                  027319 R11 CL                  027320 R11 CL                  027322 R11 CL                  027323 R11 CL                  027325 R11 CL                  027326 R11 CL                  027327 R11 CL                  027328 R11 CL                  027329 R11 CL                  027330 R11 CL                  027332 R11 CL                  027333 R11 CL                  027334 R11 CL                  027335 R11 CL                  ALA/CNA I</p>	<p><b>*Certified Nurse Aide I</b>                  027339 R11 CL                  027350 R11 CL                  027351 R11 CL                  027352 R11 CL                  027355 R11 CL                  027359 R11 CL                  027375 R11 CL                  027391 R11 CL                  027392 R11 CL                  027393 R11 CL                  027396 R11 CL                  027399 R11 CL                  027907 R11 CL                  027908 R11 CL                  027918 R11 CL                  066213 R11 CL                  066214 R11 CL                  066235 R11 CL                  066236 R11 CL                  066237 R11 CL                  ALA/CNA I</p>	<p><b>*Assisted Living Aide</b>                  027321 R09 CL                  027336 R09 CL                  ALA/CNA I</p>	<p><b>Nurse II</b>                  027308 R22 CL                  06N09086 R22 CL</p>
		<p><b>*Certified Nurse Aide I</b>                  06N09087 R11 CL</p>	<p><b>Licensed Practical Nurse</b>                  06N15001 R17 CL</p>
		<p><b>Nurse II</b>                  027342 R22 CL                  027357 R22 CL                  027369 R22 CL                  027390 R22 CL                  027824 R22 CL                  027958 R22 CL                  066211 R22 CL                  066212 R22 CL</p>	
		<p><b>Licensed Practical Nurse</b>                  027306 R17 CL                  027318 R17 CL                  027397 R17 CL                  LPN/NURSE III</p>	

PCN Count  
 Total: 76  
 FT: 67  
 NP: 4  
 PT: 5

Bed Count: 79  
 All positions located in Palmer unless otherwise noted  
 \* Positions point to Assistant Administrator

**Department of Health and Social Services**  
**Division of Alaska Pioneer Homes**  
**Fairbanks Pioneer Home**  
**Pioneer Homes Component**

Health Practitioner II  
027807 R25 CL  
JUNEAU

Contract Facility  
Executive Manager

PIONEERS  
HOME  
ADMINISTRATOR  
027200 R23 PX

PH Asst Admin  
027946 R21 CL

Maint Gen Fman  
027251 R52 CL

Pro Svcs Sp III  
027226 R19 CL

Administrative  
Assistant III  
027202 R15 CL

Nurse III  
027213 R24 CL

Certified Nurse Aide II  
027137 R12 CL  
066192 R12 CL  
066196 R12 CL

Staff Assigned As Required  
(See Below)

Maint Gen Jrny  
027256 R54 CL  
027265 R54 CL  
027290 R54 CL

Pro Svcs Sp I  
027207 R15 CL

Supply Technician II  
027204 R12 CL

Staff Assigned As Required  
(See Below)

Staff Assigned As Required  
(See Below)

Assisted Living Aide  
027247 R09 CL  
027941 R09 CL

Med I/S Asst  
027284 R10 CL

Nurse II  
06N09045 R22 CL

Licensed  
Practical Nurse  
06N09044 R17 CL

Nurse II  
027211 R22 CL  
027212 R22 CL  
027216 R22 CL  
027218 R22 CL  
027223 R22 CL  
027227 R22 CL  
027245 R22 CL  
Licensed  
Practical Nurse  
027217 R17 CL  
027221 R17 CL  
027228 R17 CL  
*LPN/nurse/III*

\*Certified  
Nurse Aide I  
06N09043 R11 CL

\*Assisted  
Living Aide  
027201 R09 CL  
027208 R09 CL  
027931 R09 CL  
027937 R09 CL  
027934 R09 CL  
027949 R09 CL  
*ALA/CNA I*

\*Certified  
Nurse Aide I  
027109 R11 CL  
027126 R11 CL  
027203 R11 CL  
027205 R11 CL  
027209 R11 CL  
027210 R11 CL  
027214 R11 CL  
027215 R11 CL  
027219 R11 CL  
027220 R11 CL  
027222 R11 CL  
027224 R11 CL  
027225 R11 CL  
027229 R11 CL  
027230 R11 CL  
027231 R11 CL  
027233 R11 CL  
027234 R11 CL  
027235 R11 CL  
027236 R11 CL  
*ALA/CNA I*

\*Certified  
Nurse Aide I  
027237 R11 CL  
027238 R11 CL  
027240 R11 CL  
027241 R11 CL  
027246 R11 CL  
027249 R11 CL  
027252 R11 CL  
027270 R11 CL  
027276 R11 CL  
027298 R11 CL  
027932 R11 CL  
027933 R11 CL  
027935 R11 CL  
027936 R11 CL  
066040 R11 CL  
066147 R11 CL  
066195 R11 CL  
066199 R11 CL  
066241 R11 CL  
066242 R11 CL  
*ALA/CNA I*

PCN Count  
Total: 76  
FT: 72  
NP: 3  
PT: 1

Bed Count: 91  
All positions located in Fairbanks unless otherwise noted  
\* Positions point to Assistant Administrator

**Department of Health and Social Services**  
**Division of Alaska Pioneer Homes**  
**Juneau Pioneer Home**  
**Pioneer Homes Component**

Health Practitioner II  
027807 R25 CL  
Juneau

Contract Facility  
Executive Manager

PIONEERS HOME  
ADMINISTRATOR  
027800 R23 PX

PH Asst Admin  
027839 R21 CL

A/L Care Coord  
027819 R17 CL

Recreation Therapist  
II  
027812 R16 CL

Maint Gen Fman  
027804 R52 CL

Pro Svcs Sp III  
027805 R19 CL

Administrative  
Assistant III  
027806 R15 CL

Nurse III  
027816 R24 CL

Staff Assigned As  
Required  
(See Below)

Nurse III  
027818 R24 CL

Certified Nurse Aide I  
027016 R11 CL  
Assisted Living Aide  
066190 R09 CL  
*ALA/CNA I*

Maint Gen Jrny  
027810 R54 CL

Administrative  
Assistant I  
027838 R12 CL

Staff Assigned As  
Required  
(See Below)

Staff Assigned As  
Required  
(See Below)

Licensed  
Practical Nurse  
027817 R17 CL

Licensed  
Practical Nurse  
027820 R17 CL  
027823 R17 CL  
066188 R17 CL  
066232 R17 CL  
*LPN/Nurse III*

\*Certified  
Nurse Aide I  
06N09018 R11 CL

\*Assisted  
Living Aide  
027802 R09 CL  
027813 R09 CL  
027822 R09 CL  
027825 R09 CL  
027836 R09 CL  
*ALA/CNA I*

\*Assisted  
Living Aide  
06N18007 R09 CL

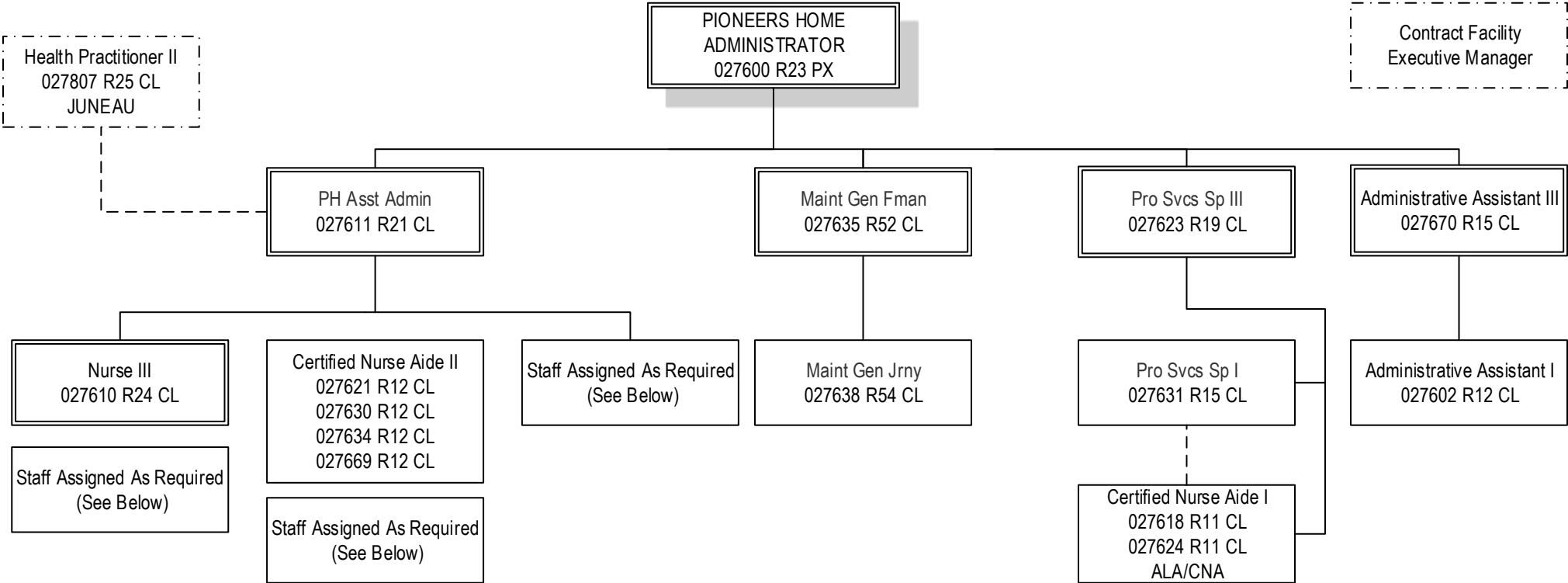
\*Certified  
Nurse Aide I  
027244 R11 CL  
027801 R11 CL  
027803 R11 CL  
027814 R11 CL  
027815 R11 CL  
027821 R11 CL  
027826 R11 CL  
027827 R11 CL  
027828 R11 CL  
027829 R11 CL  
027830 R11 CL  
027831 R11 CL  
027832 R11 CL  
*ALA/CNA I*

\*Certified  
Nurse Aide I  
027833 R11 CL  
027834 R11 CL  
027835 R11 CL  
027840 R11 CL  
027841 R11 CL  
027842 R11 CL  
027843 R11 CL  
027904 R11 CL  
066189 R11 CL  
066223 R11 CL  
066224 R11 CL  
066225 R11 CL  
*ALA/CNA I*

PCN Count  
Total: 50  
FT: 45  
NP: 2  
PT: 3

Bed Count: 49  
All positions located in Juneau unless otherwise noted  
\* Positions point to Assistant Administrator

**Department of Health and Social Services**  
**Division of Alaska Pioneer Homes**  
**Ketchikan Pioneer Home**  
**Pioneer Homes Component**



**Nurse II**  
06N09005 R22 CL

**\*Assisted Living Aide**  
06N18029 R09 CL

**\*Certified Nurse Aide I**  
027119 R11 CL  
027601 R11 CL  
027603 R11 CL  
027606 R11 CL  
027609 R11 CL  
027612 R11 CL  
027613 R11 CL  
027614 R11 CL  
027615 R11 CL  
027616 R11 CL  
027617 R11 CL  
027619 R11 CL  
*ALA/CNA*

**\*Certified Nurse Aide I**  
027620 R11 CL  
027632 R11 CL  
027633 R11 CL  
027648 R11 CL  
027671 R11 CL  
027943 R11 CL  
027945 R11 CL  
066206 R11 CL  
066238 R11 CL  
066239 R11 CL  
069504 R11 CL  
*ALA/CNA*

**\*Assisted Living Aide**  
027170 R09 CL  
027608 R09 CL  
027944 R09 CL  
*ALA/CNA*

**Nurse I**  
06N09004 R21 CL

**Nurse II**  
066240 R22 CL  
*Nurse III*

**Licensed Practical Nurse**  
06N09003 R17 CL

**Licensed Practical Nurse**  
027605 R17 CL  
027607 R17 CL  
027926 R17 CL  
*LPN/Nurse III*

**\*Certified Nurse Aide I**  
06N09002 R11 CL

**PCN Count**  
Total: 50  
FT: 44  
NP: 5  
PT: 1

**Bed Count: 45**  
All positions located in Ketchikan unless otherwise noted  
\* Positions point to Assistant Administrator

**Department of Health and Social Services**

**Division of Alaska Pioneer Homes**

**Sitka Pioneer Home**

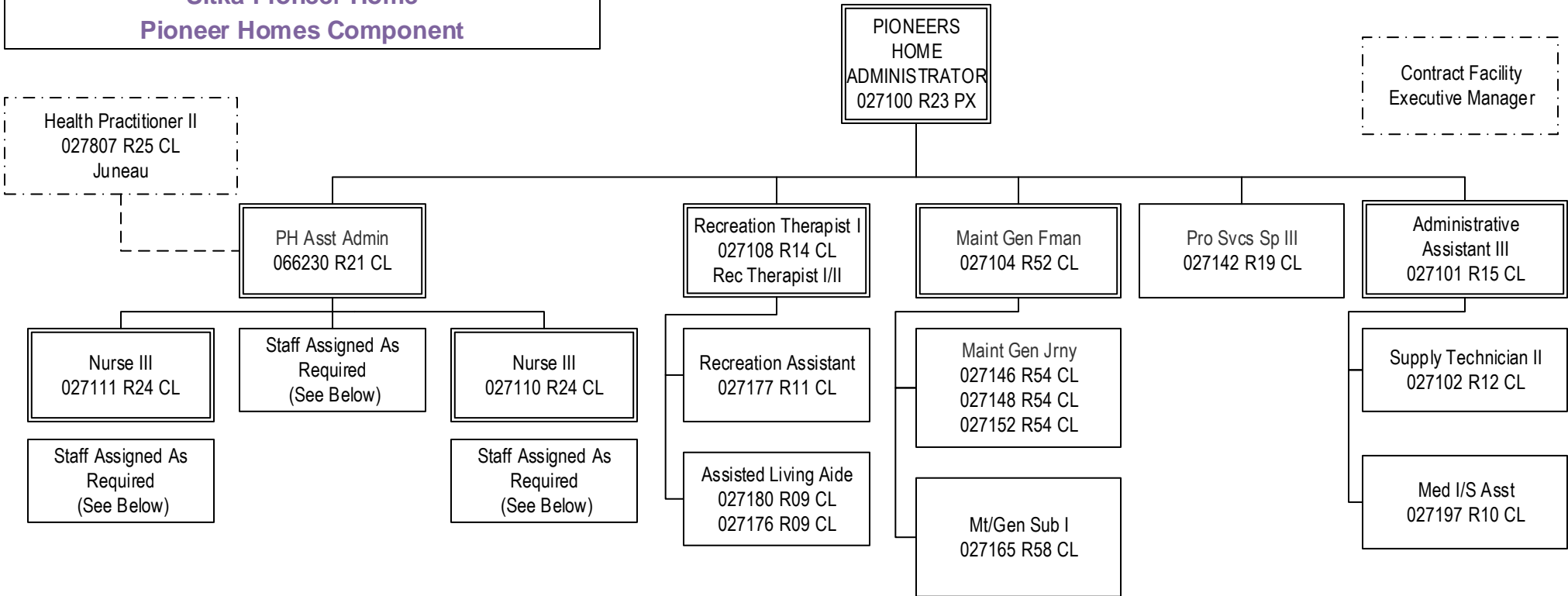
**Pioneer Homes Component**

PAGE

8 OF 9

REVISED

10/31/2019



<p><b>*Certified Nurse Aide I</b></p> <p>027105 R11 CL 027120 R11 CL 027122 R11 CL 027124 R11 CL 027125 R11 CL 027127 R11 CL 027128 R11 CL 027129 R11 CL 027130 R11 CL 027131 R11 CL 027132 R11 CL 027133 R11 CL 027134 R11 CL 027135 R11 CL 027136 R11 CL 027138 R11 CL 027139 R11 CL 027140 R11 CL <i>ALA/CNA I</i></p>	<p><b>*Certified Nurse Aide I</b></p> <p>027141 R11 CL 027143 R11 CL 027144 R11 CL 027159 R11 CL 027164 R11 CL 027178 R11 CL 027901 R11 CL 027903 R11 CL 027905 R11 CL 027912 R11 CL 027913 R11 CL 027950 R11 CL 066210 R11 CL 066228 R11 CL <b>*Assisted Living Aide</b> 027951 R09 CL 066217 R09 CL <i>ALA/CNA I</i></p>	<p><b>Nurse II</b></p> <p>027106 R22 CL 027112 R22 CL 027158 R22 CL 066226 R22 CL 027114 R22 CL 027118 R22 CL <b>Licensed Practical Nurse</b> 027117 R17 CL <i>LPN/Nurse I/II</i></p> <p><b>Nurse II</b></p> <p>06N09033 R22 CL</p> <p><b>*CNA I</b></p> <p>06N09031 R11 CL</p>
---	--	---

PCN Count

Total: 60

FT: 57

NP: 2

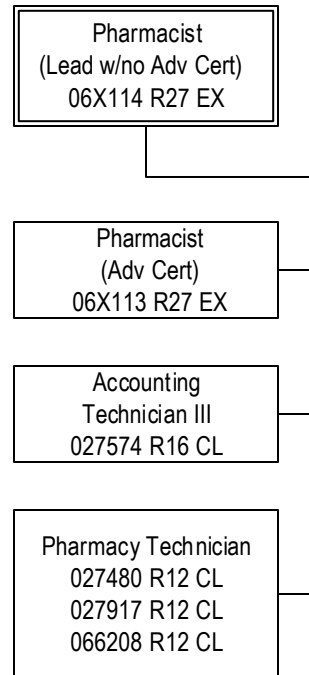
PT: 1

Bed Count: 65

All positions located in Sitka unless otherwise noted

\* Positions point to Assistant Administrator





PCN Count

Total: 6

FT: 6

NP: 0

PT: 0

All positions located in Anchorage unless otherwise noted