

**State of Alaska**  
**FY2021 Governor's Operating Budget**

**Department of Labor and Workforce Development**  
**Mechanical Inspection**  
**Component Budget Summary**

**Component: Mechanical Inspection**

**Contribution to Department's Mission**

Reduce hazards to life and property posed by unsafe boilers, pressure vessels, elevators, escalators, wheelchair lifts, recreational devices, and electrical and plumbing work.

**Core Services**

- Ensure boilers, pressure vessels, elevators, escalators, wheelchair lifts, recreational devices, and electrical and plumbing installations meet codes adopted by Alaska Statute.
- Ensure individuals engaged in electrical, plumbing, power line, boiler, asbestos, hazardous paint and explosive work have an appropriate certificate of fitness.
- Provide assistance to the Department of Revenue, Child Support Enforcement Division, by identifying certificate of fitness applicants who are in arrears on child support payments.
- Provide investigative and enforcement services to ensure that electricians, plumbers, construction contractors and electrical/mechanical administrators have proper certificates and licenses.

**Major Component Accomplishments in 2019**

- Conducted a total of 6,704 boiler, elevator, electrical, and plumbing inspections.
- Identified 1,056 code violations.
- Conducted 3,255 on-site construction project visits statewide to ensure contractor-licensing and certificate of fitness compliance, which resulted in 160 enforcement actions.

**Key Component Challenges**

The Mechanical Inspection component is challenged to continue to provide onsite inspection and education to Alaska's communities given the high cost of rural travel.

**Significant Changes in Results to be Delivered in FY2021**

No significant changes in results to be delivered are anticipated.

**Statutory and Regulatory Authority**

Statutory Authority:

AS 05.20.010 - .120	Recreational Devices
AS 08.18.011 - .171	Construction Contractors
AS 18.31.010 - .500	Asbestos Health Hazard Abatement
AS 08.52.010 - .100	Explosives Handlers
AS 18.60.180 - .395	Boilers
AS 18.60.580 - .660	Electrical Safety
AS 18.60.670 - .695	High Voltage Lines
AS 18.60.705 - .740	Plumbing Code
AS 18.60.800 - .820	Elevators
AS 18.62.010 - .080	Certificate of Fitness
AS 18.63.010 - .100	Hazardous Painting Certification
AS 23.05.060	Certificate of Fitness - Powers of the Department
AS 25.27.244	Certificate of Fitness - Child Support Enforcement
AS 44.31.025	Building Safety Account
AS 44.62.450	Hearings - Amusement park/tramway rides

AS 45.45.910

Electrical Safety - Sale or transfer of consumer electrical products

## Administrative Regulations:

8 AAC 61.600 - .790	Asbestos Abatement Certification
8 AAC 61.800 - .890	Painting Certification
8 AAC 62.010 - .070	Explosives Handlers
8 AAC 63.010 - .030	Plumbing Code
8 AAC 70.010 - .090	Electrical Safety
8 AAC 77.005 - .905	Elevator Safety
8 AAC 78.010 - .900	Amusement Rides and Tramways
8 AAC 80.010 - .900	Boilers & Pressure Vessels
8 AAC 90.105 - .900	Certificates of Fitness
12 AAC 21.010 - .990	Construction Contractors

**Contact Information**

**Contact:** Grey Mitchell, Director  
**Phone:** (907) 465-6060  
**E-mail:** grey.mitchell@alaska.gov

Mechanical Inspection Personal Services Information				
Authorized Positions			Personal Services Costs	
	<u>FY2020</u> <u>Management</u> <u>Plan</u>	<u>FY2021</u> <u>Governor</u>		
Full-time	21	21	Annual Salaries	1,515,100
Part-time	0	0	COLA	8,434
Nonpermanent	0	0	Premium Pay	15,801
			Annual Benefits	936,345
			<i>Less 2.19% Vacancy Factor</i>	(54,180)
			Lump Sum Premium Pay	0
<b>Totals</b>	<b>21</b>	<b>21</b>	<b>Total Personal Services</b>	<b>2,421,500</b>

Position Classification Summary					
Job Class Title	Anchorage	Fairbanks	Juneau	Others	Total
Accounting Technician I	2	0	0	0	2
Administrative Assistant I	1	0	0	0	1
B&P Vsl Insp I	2	1	0	2	5
B&P Vsl Insp II	1	0	0	0	1
Investigator III	1	0	0	0	1
Mechanical Inspection Manager	1	0	0	0	1
Occupational License Examiner	1	0	0	0	1
SIC Elect Insp	0	0	1	2	3
SIC Elevat Insp	0	1	0	2	3
SIC Plumb Insp	0	1	0	2	3
<b>Totals</b>	<b>9</b>	<b>3</b>	<b>1</b>	<b>8</b>	<b>21</b>

**Component Detail All Funds**  
**Department of Labor and Workforce Development**

**Component:** Mechanical Inspection (346)  
**RDU:** Labor Standards and Safety (113)

Non-Formula Component

	FY2019 Actuals	FY2020 Conference Committee	FY2020 Authorized	FY2020 Management Plan	FY2021 Governor	FY2020 Management Plan vs FY2021 Governor	
71000 Personal Services	2,118.7	2,414.0	2,414.0	2,414.0	2,421.5	7.5	0.3%
72000 Travel	110.7	115.0	115.0	115.0	115.0	0.0	0.0%
73000 Services	352.3	412.2	412.2	412.2	444.2	32.0	7.8%
74000 Commodities	40.5	20.0	20.0	20.0	20.0	0.0	0.0%
75000 Capital Outlay	0.0	0.0	0.0	0.0	0.0	0.0	0.0%
77000 Grants, Benefits	0.0	0.0	0.0	0.0	0.0	0.0	0.0%
78000 Miscellaneous	0.0	0.0	0.0	0.0	0.0	0.0	0.0%
<b>Totals</b>	<b>2,622.2</b>	<b>2,961.2</b>	<b>2,961.2</b>	<b>2,961.2</b>	<b>3,000.7</b>	<b>39.5</b>	<b>1.3%</b>
<b>Fund Sources:</b>							
1005 GF/Prgm (DGF)	128.4	132.3	132.3	132.3	133.5	1.2	0.9%
1007 I/A Rcpts (Other)	624.5	708.4	708.4	708.4	721.4	13.0	1.8%
1172 Bldg Safe (DGF)	1,869.3	2,120.5	2,120.5	2,120.5	2,145.8	25.3	1.2%
<b>Unrestricted General (UGF)</b>	<b>0.0</b>	<b>0.0</b>	<b>0.0</b>	<b>0.0</b>	<b>0.0</b>	<b>0.0</b>	<b>0.0%</b>
<b>Designated General (DGF)</b>	<b>1,997.7</b>	<b>2,252.8</b>	<b>2,252.8</b>	<b>2,252.8</b>	<b>2,279.3</b>	<b>26.5</b>	<b>1.2%</b>
<b>Other Funds</b>	<b>624.5</b>	<b>708.4</b>	<b>708.4</b>	<b>708.4</b>	<b>721.4</b>	<b>13.0</b>	<b>1.8%</b>
<b>Federal Funds</b>	<b>0.0</b>	<b>0.0</b>	<b>0.0</b>	<b>0.0</b>	<b>0.0</b>	<b>0.0</b>	<b>0.0%</b>
<b>Positions:</b>							
Permanent Full Time	21	21	21	21	21	0	0.0%
Permanent Part Time	0	0	0	0	0	0	0.0%
Non Permanent	0	0	0	0	0	0	0.0%

**Change Record Detail - Multiple Scenarios with Descriptions**  
**Department of Labor and Workforce Development**

**Component:** Mechanical Inspection (346)  
**RDU:** Labor Standards and Safety (113)

Scenario/Change Record Title	Trans Type	Totals	Personal Services	Travel	Services	Commodities	Capital Outlay	Grants, Benefits	Miscellaneous	Positions		NP
										PFT	PPT	
***** Changes From FY2020 Conference Committee To FY2020 Authorized *****												
<b>FY2020 Conference Committee</b>												
	ConfCom	2,961.2	2,414.0	115.0	412.2	20.0	0.0	0.0	0.0	21	0	0
1005 GF/Prgm		132.3										
1007 I/A Rcpts		708.4										
1172 Bldg Safe		2,120.5										
<b>Subtotal</b>		<b>2,961.2</b>	<b>2,414.0</b>	<b>115.0</b>	<b>412.2</b>	<b>20.0</b>	<b>0.0</b>	<b>0.0</b>	<b>0.0</b>	<b>21</b>	<b>0</b>	<b>0</b>
***** Changes From FY2020 Management Plan To FY2021 Governor *****												
<b>FY2021 Salary and Health Insurance Increases</b>												
	SalAdj	39.5	39.5	0.0	0.0	0.0	0.0	0.0	0.0	0	0	0
1005 GF/Prgm		1.2										
1007 I/A Rcpts		13.0										
1172 Bldg Safe		25.3										
FY2021 increase to LTC Health Insurance from \$1530 to \$1555 per member per month: \$28.0												
FY2021 GGU Salary Increases: \$8.5												
FY2021 increase to GGU Health Insurance from \$1530 to \$1555 per member per month: \$3.0												
<b>Align Authority with Anticipated Expenditures</b>												
	LIT	0.0	-32.0	0.0	32.0	0.0	0.0	0.0	0.0	0	0	0
Transfer authority from personal services to cover anticipated services costs. The remaining personal services authority is sufficient to cover anticipated expenditures.												
<b>Totals</b>		<b>3,000.7</b>	<b>2,421.5</b>	<b>115.0</b>	<b>444.2</b>	<b>20.0</b>	<b>0.0</b>	<b>0.0</b>	<b>0.0</b>	<b>21</b>	<b>0</b>	<b>0</b>

**Line Item Detail (1676)**  
**Department of Labor and Workforce Development**  
**Travel**

**Component:** Mechanical Inspection (346)

Line Number	Line Name		FY2019 Actuals	FY2020 Management Plan	FY2021 Governor
2000	Travel		110.7	115.0	115.0
Object Class	Servicing Agency	Explanation	FY2019 Actuals	FY2020 Management Plan	FY2021 Governor
<b>2000 Travel Detail Totals</b>			<b>110.7</b>	<b>115.0</b>	<b>115.0</b>
2000	In-State Employee Travel	In-state employee travel to support the department's mission.	105.6	112.8	113.0
2002	Out of State Employee Travel	Out of state employee travel.	5.0	2.2	1.5
2006	Other Travel Costs	Cash advance fees.	0.1	0.0	0.5

**Line Item Detail (1676)**  
**Department of Labor and Workforce Development**  
**Services**

**Component:** Mechanical Inspection (346)

Line Number	Line Name		FY2019 Actuals	FY2020 Management Plan	FY2021 Governor
3000	Services		352.3	412.2	444.2
Object Class	Servicing Agency	Explanation	FY2019 Actuals	FY2020 Management Plan	FY2021 Governor
<b>3000 Services Detail Totals</b>			<b>352.3</b>	<b>412.2</b>	<b>444.2</b>
3000	Education Services	Training, education, and memberships.	4.5	6.0	6.0
3004	Telecommunications	Local, long distance, and cellular telephone charges, television, data/network, telecommunication equipment, and other wireless charges from outside vendors.	4.4	6.2	6.5
3006	Delivery Services	Freight, courier services, and postage.	2.6	6.5	6.5
3007	Advertising and Promotions	Advertising for regulation changes, board meetings, recruitments, or other public notices.	0.8	2.0	2.0
3008	Utilities	Electricity, heating fuel, water, sewage, recycling, heating fuel, trash, and confidential document and other disposal services.	0.5	0.5	0.5
3009	Structure/Infrastructure/Land	Room rental for training and seminar space, board or council meetings, or storage and archiving needs.	2.6	3.0	3.0
3010	Equipment/Machinery	Machinery, furniture, and equipment purchase, repairs, maintenance, rentals, and leases.	3.2	6.0	6.0
3011	Other Services	Fees for elevator inspection data entry; printing of forms, code books, and educational materials; credit card service cost.	18.8	22.6	22.6
3012	Inter-Agency Federal Indirect Rate	Labor - Management Services (335) Indirect cost allocation for	125.6	143.2	147.0



**Line Item Detail (1676)**  
**Department of Labor and Workforce Development**  
**Services**

**Component:** Mechanical Inspection (346)

Object Class	Servicing Agency	Explanation	FY2019 Actuals	FY2020 Management Plan	FY2021 Governor
<b>3000 Services Detail Totals</b>			<b>352.3</b>	<b>412.2</b>	<b>444.2</b>
Allocation		departmental purchasing, accounting, reports, personnel consultation and other services provided by Management Services.			
3013	Inter-Agency Data Processing Operations Allocation	Labor - Data Processing (334) Allocation for Data Processing network and support services.	21.2	26.4	32.0
3016	Inter-Agency Economic Development	Labor - Data Processing (334) Reimbursable services agreement with Data Processing for Certificate of Fitness system support.	2.2	5.0	5.0
3017	Inter-Agency Information Technology Non-Telecommunications	Admin - Department-wide Reimbursable services agreement with the Office of Information Technology rate for non-telecommunications support, including software and computer services.	60.7	65.1	72.5
3018	Inter-Agency Information Technology Telecommunications	Admin - Department-wide Reimbursable services agreement with the Office of Information Technology for telecommunication support.	8.3	10.0	10.0
3021	Inter-Agency Mail	Admin - Department-wide Reimbursable services agreement with Shared Services of Alaska for central mailroom support and services.	0.7	1.0	1.0
3022	Inter-Agency Human Resources	Admin - Department-wide Reimbursable services agreement with the Division of Personnel and Labor Relations for human resources and personnel services.	14.1	15.0	17.5
3023	Inter-Agency Building Leases	Admin - Department-wide State-owned facility space rent or other property leases.	20.1	12.2	15.0
3024	Inter-Agency Legal	Law - Department-wide Reimbursable services agreement with the Department of Law for legal services.	4.8	8.8	12.0
3025	Inter-Agency Auditing	Admin - Department-wide Reimbursable services agreement	0.4	1.0	2.0

**Line Item Detail (1676)**  
**Department of Labor and Workforce Development**  
**Services**

**Component:** Mechanical Inspection (346)

Object Class	Servicing Agency	Explanation	FY2019 Actuals	FY2020 Management Plan	FY2021 Governor
<b>3000 Services Detail Totals</b>			<b>352.3</b>	<b>412.2</b>	<b>444.2</b>
		with the Department of Administration for auditing services, including federal compliance audits.			
3026	Inter-Agency Insurance	Admin - Department-wide			
		Reimbursable services agreement with the Division of Risk Management for risk management insurance charges for leased buildings, repossessed properties, public official bonds, and overhead.	1.4	1.6	3.0
3027	Inter-Agency Financial	Admin - Department-wide			
		Reimbursable services agreement with the Division of Finance for system services for State accounting and payroll (IRIS), and reporting (ALDER) systems.	3.4	3.6	5.0
3028	Inter-Agency Americans with Disabilities Act Compliance	Admin - Department-wide			
		Reimbursable services agreement with the Department of Administration for Americans with Disabilities Act (ADA) services.	0.0	0.1	0.1
3037	State Equipment Fleet	Trans - Department-wide			
		State equipment fleet fixed cost services for equipment replacement, maintenance and fuel, both allowable and non-allowable.	52.0	55.6	57.0
3038	Inter-Agency Management/Consulting	Admin - Department-wide			
		Reimbursable services agreement with Shared Services of Alaska for travel and accounts payable services.	0.0	10.8	12.0

**Line Item Detail (1676)**  
**Department of Labor and Workforce Development**  
**Commodities**

**Component:** Mechanical Inspection (346)

Line Number	Line Name		FY2019 Actuals	FY2020 Management Plan	FY2021 Governor
4000	Commodities		40.5	20.0	20.0
Object Class	Servicing Agency	Explanation	FY2019 Actuals	FY2020 Management Plan	FY2021 Governor
<b>4000 Commodities Detail Totals</b>			<b>40.5</b>	<b>20.0</b>	<b>20.0</b>
4000	Business	General business supplies such as office consumables and computer equipment.	38.8	18.6	18.6
4002	Household/Institutional	Protective clothing to perform on-site inspections.	1.5	1.4	1.4
4015	Parts and Supplies	Parts and supplies.	0.2	0.0	0.0

**Revenue Detail (1681)**  
**Department of Labor and Workforce Development**

**Component:** Mechanical Inspection (346)

Revenue Type (OMB Fund Code) Revenue Source	Component	Comment	FY2019 Actuals	FY2020 Management Plan	FY2021 Governor
<b>5005 GF/Prgm (1005 GF/Prgm)</b>			<b>129.9</b>	<b>132.3</b>	<b>133.5</b>
5101 Program Receipts Public Protection - Licenses and Permits		Program receipts from Certificates of Fitness fees.	129.9	132.3	133.5
<b>5007 I/A Rcpts (1007 I/A Rcpts)</b>			<b>624.5</b>	<b>708.4</b>	<b>721.4</b>
5301 Inter-Agency Receipts	Commerce - Department-wide	Reimbursable services agreement with Department of Commerce and Economic Development for contractor licensing enforcement, Electrical Administrator/Mechanical Administrator (EA/MA) inspection duties, and accident investigation related to EA/MA matters.	296.8	305.0	310.0
5301 Inter-Agency Receipts	Labor - Occupational Safety and Health (970)	Reimbursable services agreement with Occupational Safety and Health for a portion of elevator, boiler/pressure vessel, electrical and plumbing inspections.	275.0	330.0	335.0
5301 Inter-Agency Receipts	Rev - Department-wide	Reimbursable services agreement with Department of Revenue, Child Support Services component, for implementation of license actions as outlined in AS 25.27.244 for Certificates of Fitness.	52.7	73.4	76.4
<b>6172 Bldg Safe (1172 Bldg Safe)</b>			<b>1,869.3</b>	<b>2,120.5</b>	<b>2,145.8</b>
6820 Building Safety Account - Chrgs for Srvcs Misc		Building Safety Account (AS 44.31.025) revenue is generated from fees for inspections of boilers, pressure vessels, and lifting devices such as elevators, and fees for certificates of fitness for plumbers and electricians.	1,823.4	2,120.5	2,145.8
6820 Building Safety Account - Chrgs for Srvcs Misc		Building Safety Account (AS 44.31.025) revenue collected in a fund-only appropriation.	0.5	0.0	0.0

**Revenue Detail (1681)**  
**Department of Labor and Workforce Development**

**Component:** Mechanical Inspection (346)

<b>Revenue Type (OMB Fund Code)</b>	<b>Component</b>	<b>Comment</b>	<b>FY2019 Actuals</b>	<b>FY2020 Management Plan</b>	<b>FY2021 Governor</b>
6820 Building Safety Account - Chrgs for Srvcs Misc		Revenue from the Building Safety Account balance (AS 44.31.025) (fund 1172) used to fund program costs.	43.1	0.0	0.0
6822 Building Safety Account - Miscellaneous		Miscellaneous deposits in the Building Safety Account.	2.3	0.0	0.0

**Inter-Agency Services (1682)**  
**Department of Labor and Workforce Development**

**Component:** Mechanical Inspection (346)

				FY2019 Actuals	FY2020 Management Plan	FY2021 Governor
<b>Component Totals</b>				<b>314.9</b>	<b>359.4</b>	<b>391.1</b>
With Department of Labor and Workforce Development				149.0	174.6	184.0
With Department of Administration				109.1	120.4	138.1
With Department of Law				4.8	8.8	12.0
With Department of Transportation/Public Facilities				52.0	55.6	57.0
Object Class	Servicing Agency	Explanation				
				FY2019 Actuals	FY2020 Management Plan	FY2021 Governor
3012	Inter-Agency Federal Indirect Rate Allocation	Labor - Management Services (335)	Indirect cost allocation for departmental purchasing, accounting, reports, personnel consultation and other services provided by Management Services.	125.6	143.2	147.0
3013	Inter-Agency Data Processing Operations Allocation	Labor - Data Processing (334)	Allocation for Data Processing network and support services.	21.2	26.4	32.0
3016	Inter-Agency Economic Development	Labor - Data Processing (334)	Reimbursable services agreement with Data Processing for Certificate of Fitness system support.	2.2	5.0	5.0
3017	Inter-Agency Information Technology Non-Telecommunications	Admin - Department-wide	Reimbursable services agreement with the Office of Information Technology rate for non-telecommunications support, including software and computer services.	60.7	65.1	72.5
3018	Inter-Agency Information Technology Telecommunications	Admin - Department-wide	Reimbursable services agreement with the Office of Information Technology for telecommunication support.	8.3	10.0	10.0
3021	Inter-Agency Mail	Admin - Department-wide	Reimbursable services agreement with Shared Services of Alaska for central mailroom support and services.	0.7	1.0	1.0
3022	Inter-Agency Human Resources	Admin - Department-wide	Reimbursable services agreement	14.1	15.0	17.5

**Inter-Agency Services (1682)**  
**Department of Labor and Workforce Development**

**Component:** Mechanical Inspection (346)

<b>Object Class</b>	<b>Servicing Agency</b>	<b>Explanation</b>	<b>FY2019 Actuals</b>	<b>FY2020 Management Plan</b>	<b>FY2021 Governor</b>
		with the Division of Personnel and Labor Relations for human resources and personnel services.			
3023	Inter-Agency Building Leases	Admin - Department-wide State-owned facility space rent or other property leases.	20.1	12.2	15.0
3024	Inter-Agency Legal	Law - Department-wide Reimbursable services agreement with the Department of Law for legal services.	4.8	8.8	12.0
3025	Inter-Agency Auditing	Admin - Department-wide Reimbursable services agreement with the Department of Administration for auditing services, including federal compliance audits.	0.4	1.0	2.0
3026	Inter-Agency Insurance	Admin - Department-wide Reimbursable services agreement with the Division of Risk Management for risk management insurance charges for leased buildings, repossessed properties, public official bonds, and overhead.	1.4	1.6	3.0
3027	Inter-Agency Financial	Admin - Department-wide Reimbursable services agreement with the Division of Finance for system services for State accounting and payroll (IRIS), and reporting (ALDER) systems.	3.4	3.6	5.0
3028	Inter-Agency Americans with Disabilities Act Compliance	Admin - Department-wide Reimbursable services agreement with the Department of Administration for Americans with Disabilities Act (ADA) services.	0.0	0.1	0.1
3037	State Equipment Fleet	Trans - Department-wide State equipment fleet fixed cost services for equipment replacement, maintenance and fuel, both allowable and non-allowable.	52.0	55.6	57.0
3038	Inter-Agency Management/Consulting	Admin - Department-wide Reimbursable services agreement with Shared Services of Alaska for travel and accounts payable services.	0.0	10.8	12.0

**Personal Services Expenditure Detail**  
**Department of Labor and Workforce Development**

**Scenario:** FY2021 Governor (16414)  
**Component:** Mechanical Inspection (346)  
**RDU:** Labor Standards and Safety (113)

PCN	Job Class Title	Time Status	Retire Code	Barg Unit	Location	Salary Sched	Range / Step	Comp Months	Split / Count	Annual Salaries	COLA	Premium Pay	Annual Benefits	Total Costs	UGF Amount
07-1212	Occupational License Examiner	FT	A	GP	Anchorage	200	14A / B	12.0		45,835	616	0	34,548	80,999	0
07-2014	Administrative Assistant I	FT	A	GP	Juneau	205	12C	3.0	*	11,121	150	0	8,521	19,792	0
07-2016	Regulations Specialist II	FT	A	GP	Juneau	205	16C	2.0	*	9,771	131	0	6,491	16,393	0
07-2040	Administrative Officer I	FT	A	SS	Juneau	205	17B	3.0	*	16,271	0	0	10,302	26,573	0
07-2055	Administrative Assistant III	FT	A	SS	Anchorage	600	15A	3.0	*	13,031	0	0	9,188	22,219	0
07-2069	SIC Elect Insp	FT	A	LL	Palmer	2BB	49A	12.0		62,263	0	0	40,092	102,355	0
07-2078	Investigator III	FT	A	GP	Anchorage	200	18F / G	12.0		70,382	946	0	42,988	114,316	0
07-2079	SIC Elevat Insp	FT	A	LL	Palmer	2BB	49K / L	12.0		79,906	0	0	46,158	126,064	0
07-4004	Administrative Assistant I	FT	A	GP	Anchorage	200	12A	3.0	*	9,966	134	0	8,124	18,224	0
07-4014	Deputy Director	FT	A	XE	Anchorage	N00	25A / B	3.0	*	24,840	0	0	13,212	38,052	0
07-4016	Mechanical Inspection Manager	FT	A	SS	Anchorage	200	22D / E	12.0		94,527	0	0	51,329	145,856	0
07-4028	Administrative Assistant I	FT	A	GP	Anchorage	200	12B	5.4	**	18,517	249	0	14,822	33,588	0
07-4507	Accounting Technician I	FT	A	GP	Anchorage	200	12B / C	12.0		41,661	560	0	33,113	75,334	0
07-4508	B&P Vsl Insp I	FT	A	GP	Anchorage	200	19B / C	12.0		67,314	905	0	41,933	110,152	0
07-4509	B&P Vsl Insp II	FT	A	SS	Anchorage	200	20K	12.0		92,124	0	0	50,503	142,627	0
07-4511	SIC Elevat Insp	FT	A	LL	Fairbanks	2EE	49D / E	12.0		72,266	0	1,036	43,888	117,190	0
07-4519	SIC Elect Insp	FT	A	LL	Juneau	2AA	49J / K	12.0		78,082	0	2,722	46,467	127,271	0
07-4520	SIC Plumb Insp	FT	A	LL	Fairbanks	2EE	49L / M	12.0		82,739	0	1,272	47,569	131,580	0
07-4523	SIC Plumb Insp	FT	A	LL	Palmer	2BB	49A / B	12.0		64,405	0	0	40,829	105,234	0
07-4526	SIC Elect Insp	FT	A	LL	Palmer	2BB	49F	12.0		73,743	0	2,659	44,953	121,355	0
07-4527	B&P Vsl Insp I	FT	A	GP	Palmer	200	19B / C	12.0		66,054	888	0	41,500	108,442	0
07-4541	B&P Vsl Insp I	FT	A	GP	Anchorage	200	19K	12.0		83,076	1,116	0	47,352	131,544	0
07-4544	SIC Plumb Insp	FT	A	LL	Palmer	2BB	49C / D	12.0		66,726	0	2,403	42,453	111,582	0
07-4545	B&P Vsl Insp I	FT	A	GP	Fairbanks	203	19D / E	12.0		74,401	1,037	2,777	45,324	123,539	0
07-4546	B&P Vsl Insp I	FT	A	GP	Kenai	200	19F / G	12.0		77,137	1,056	1,441	45,805	125,439	0
07-4547	SIC Elevat Insp	FT	A	LL	Palmer	2BB	49D / E	12.0		70,894	0	1,491	43,572	115,957	0
07-4548	Accounting Technician I	FT	A	GP	Anchorage	200	12G / J	12.0		48,048	646	0	35,309	84,003	0

Note: If a position is split, an asterisk (\*) will appear in the Split/Count column. If the split position is also counted in the component, two asterisks (\*\*) will appear in this column. [No valid job title] appearing in the Job Class Title indicates that the PCN has an invalid class code or invalid range for the class code effective date of this scenario.



**Personal Services Expenditure Detail**  
**Department of Labor and Workforce Development**

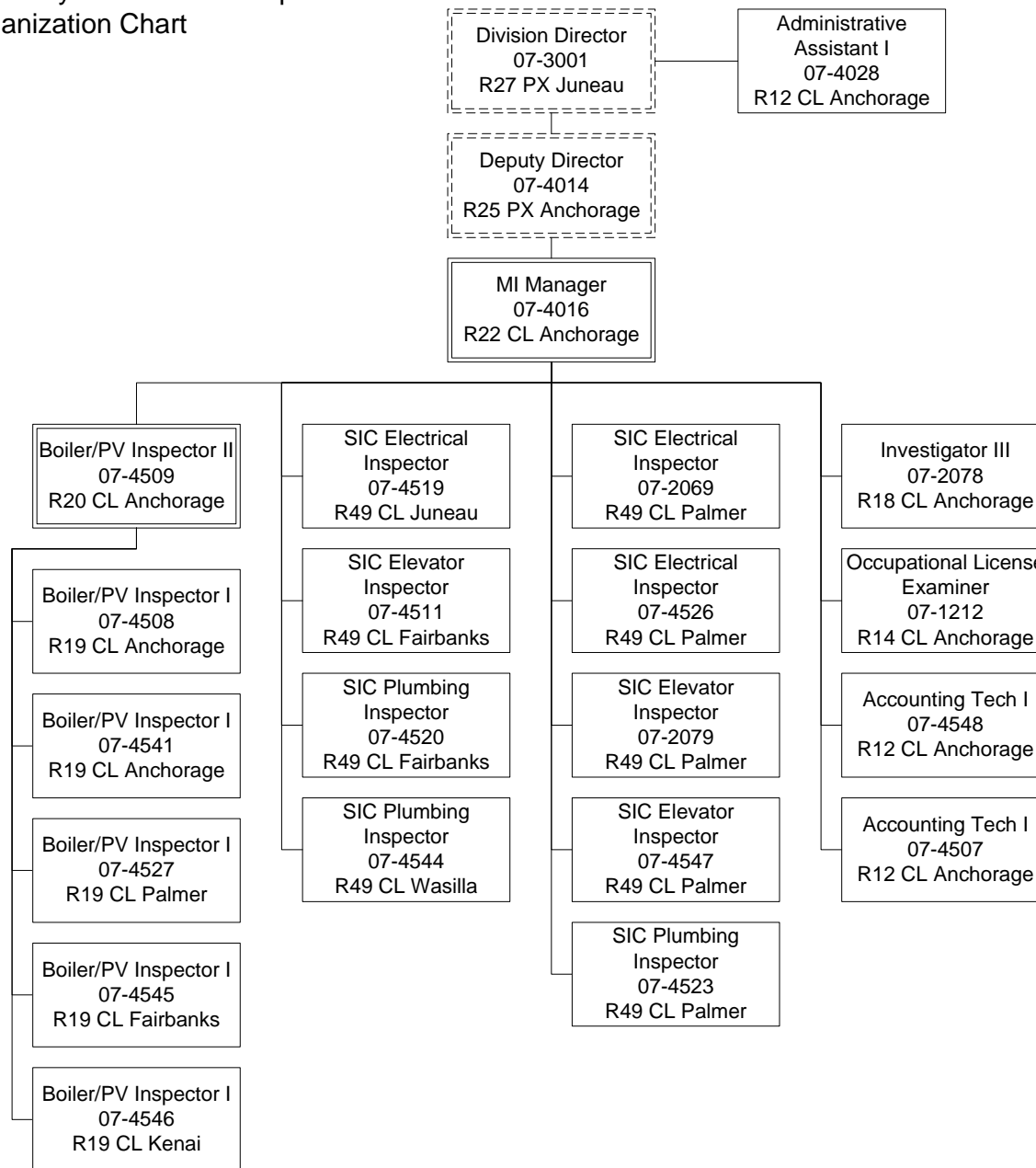
**Scenario:** FY2021 Governor (16414)  
**Component:** Mechanical Inspection (346)  
**RDU:** Labor Standards and Safety (113)

PCN	Job Class Title	Time Status	Retire Code	Barg Unit	Location	Salary Sched	Range / Step	Comp Months	Split / Count	Annual Salaries	COLA	Premium Pay	Annual Benefits	Total Costs	UGF Amount
		<b>Total Positions</b>	<b>New</b>	<b>Deleted</b>										<b>Total Salary Costs:</b>	1,515,100
														<b>Total COLA:</b>	8,434
	<b>Full Time Positions:</b>	21	0	0										<b>Total Premium Pay:</b>	15,801
	<b>Part Time Positions:</b>	0	0	0										<b>Total Benefits:</b>	936,345
	<b>Non Permanent Positions:</b>	0	0	0											
	<b>Positions in Component:</b>	21	0	0											
	<b>Total Component Months:</b>	262.4													
														<b>Total Pre-Vacancy:</b>	2,475,680
														<b>Minus Vacancy Adjustment of 2.19%:</b>	(54,180)
														<b>Total Post-Vacancy:</b>	2,421,500
														<b>Plus Lump Sum Premium Pay:</b>	0
														<b>Personal Services Line 100:</b>	2,421,500

<b>PCN Funding Sources:</b>	<b>Pre-Vacancy</b>	<b>Post-Vacancy</b>	<b>Percent</b>
1005 General Fund/Program Receipts	98,414	96,260	3.98%
1007 Interagency Receipts	685,020	670,029	27.67%
1172 Building Safety Account	1,692,245	1,655,211	68.35%
<b>Total PCN Funding:</b>	<b>2,475,680</b>	<b>2,421,500</b>	<b>100.00%</b>

Note: If a position is split, an asterisk (\*) will appear in the Split/Count column. If the split position is also counted in the component, two asterisks (\*\*) will appear in this column. [No valid job title] appearing in the Job Class Title indicates that the PCN has an invalid class code or invalid range for the class code effective date of this scenario.

Department of Labor and Workforce Development  
 Labor Standards and Safety / Mechanical Inspection  
 FY2021 Governor Organization Chart



PV = Pressure Vessel  
 SIC = Safety Inspection and Compliance