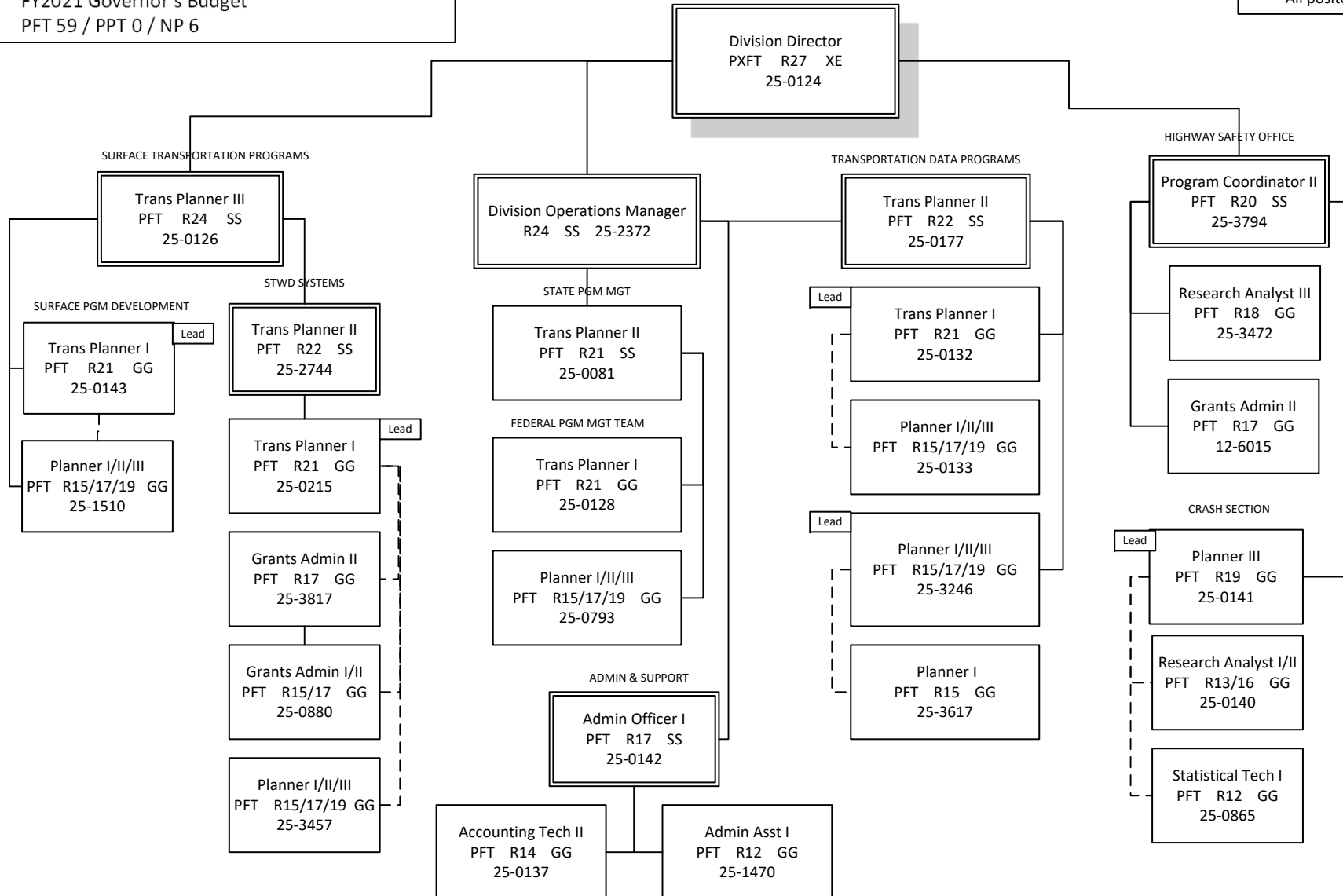


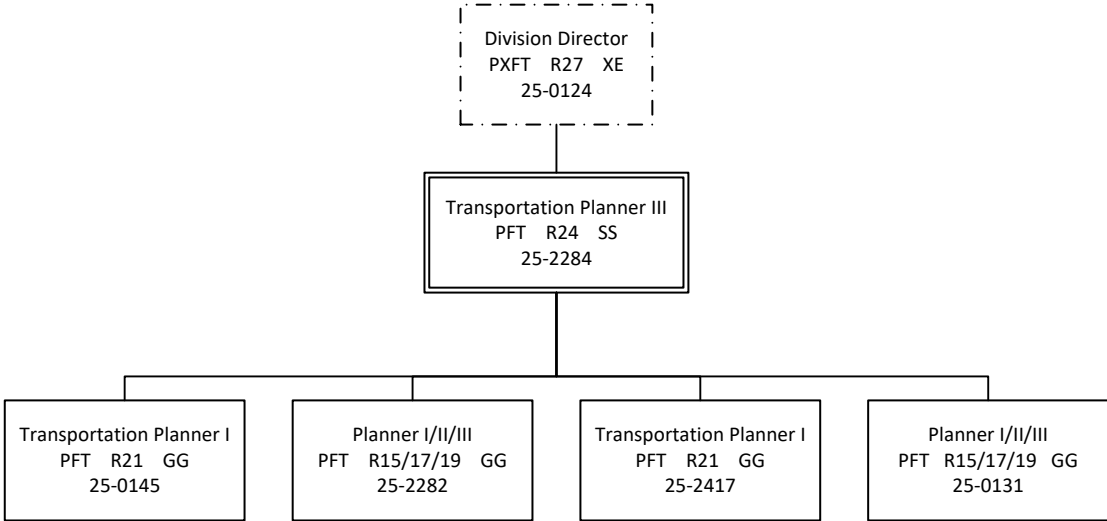
Department of Transportation & Public Facilities
 RDU: Administration and Support (333)
 COMPONENT: Program Development and
 Statewide Planning (2762)
 FY2021 Governor's Budget
 PFT 59 / PPT 0 / NP 6

HEADQUARTERS TOTAL:
 FULL-TIME POSITIONS: 27
 PART-TIME POSITIONS: 0
 NON-PERM POSITIONS: 0
 TOTAL: 27
 *All positons located in Juneau



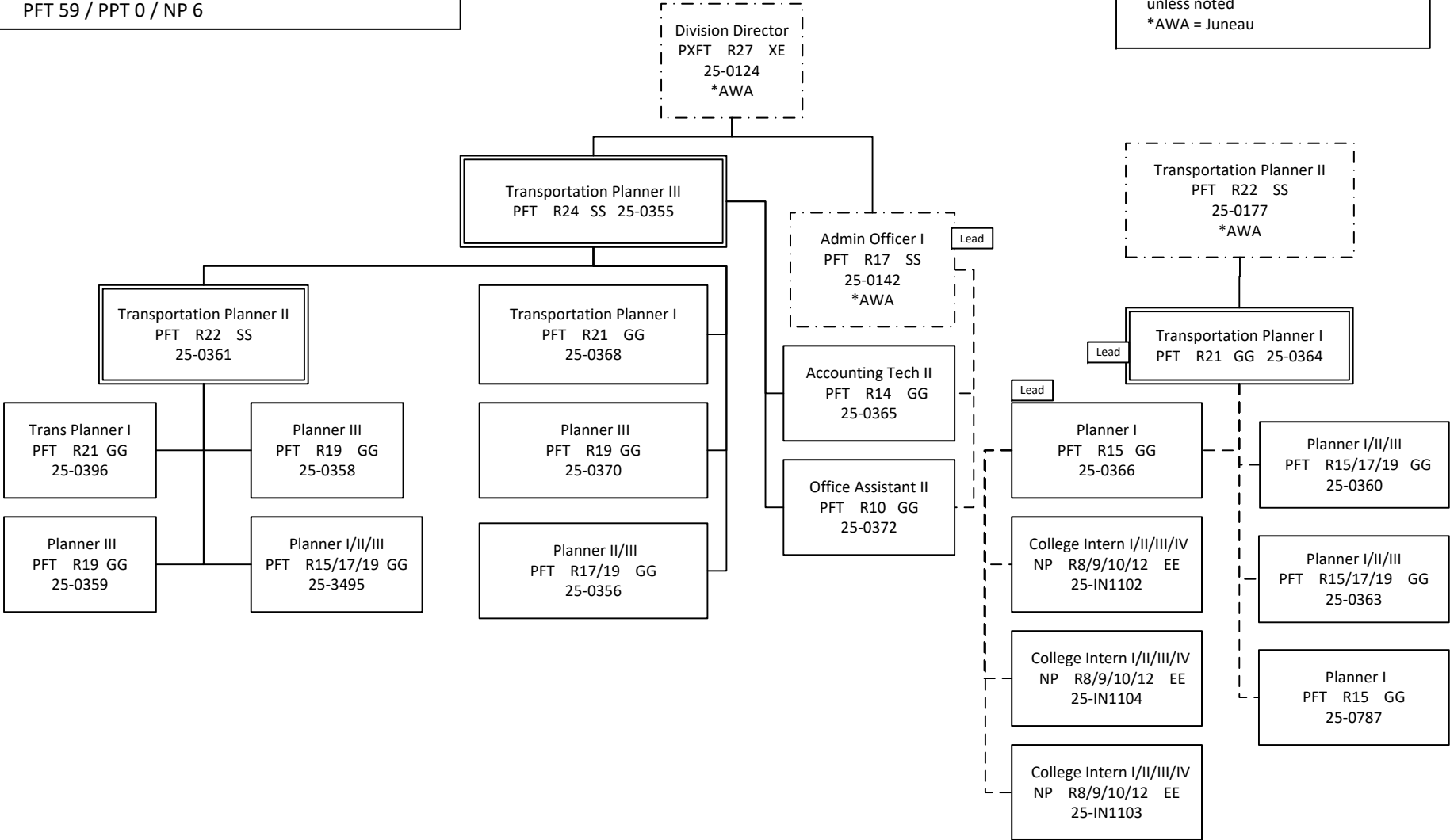
Department of Transportation & Public Facilities
RDU: Administration and Support (333)
COMPONENT: Program Development and
Statewide Planning (2762)
FY2021 Governor's Budget
PFT 59 / PPT 0 / NP 6

JUNEAU FIELD OFFICE TOTAL:
FULL-TIME POSITIONS: 5
PART-TIME POSITIONS: 0
NON-PERM POSITIONS: 0
TOTAL: 5
*All positions are located in Juneau



Department of Transportation & Public Facilities
 RDU: Administration and Support (333)
 COMPONENT: Program Development and
 Statewide Planning (2762)
 FY2021 Governor's Budget
 PFT 59 / PPT 0 / NP 6

ANCHORAGE FIELD OFFICE TOTAL:
 FULL-TIME POSITIONS: 16
 PART-TIME POSITIONS: 0
 NON-PERM POSITIONS: 3
 TOTAL: 19
 *All positions are located in Anchorage,
 unless noted
 *AWA = Juneau



Department of Transportation & Public Facilities
 RDU: Administration and Support (333)
 COMPONENT: Program Development and
 Statewide Planning (2762)
 FY2021 Governor's Budget
 PFT 59 / PPT 0 / NP 6

FAIRBANKS FIELD OFFICE TOTAL:
 FULL-TIME POSITIONS: 11
 PART-TIME POSITIONS: 0
 NON-PERM POSITIONS: 3
 TOTAL: 14
 *All positions are located in
 Fairbanks, unless noted.
 *AWA = Juneau

