

**State of Alaska**  
**FY2021 Governor's Operating Budget**

**Department of Transportation/Public Facilities**  
**Central Design and Engineering Services**  
**Component Budget Summary**

**Component: Central Design and Engineering Services**

**Contribution to Department's Mission**

Develop, design and advertise projects that preserve and improve Alaska's transportation and public facilities infrastructure. The division also provides a wide range of technical services to the department, other state and federal agencies, local governments, utility companies, and the public.

**Core Services**

- Develop capital improvement projects (CIP) from the planning stage to final preparation of plans, specifications and estimates for construction advertising including survey, preliminary design, environmental, traffic and safety, materials, right-of-way, utilities, and design elements.
- Provide technical assistance during construction.
- Ensure environmental compliance services during construction and maintenance and operations of facilities.
- Complete and maintain airport master plans, airport layout plans, and airport certification documents.
- Provide design input for all airport leasing actions.
- Complete traffic studies and accident analysis.
- Conduct hydrological studies, materials testing, and surveying.
- Process utility, right-of-way and traffic permits.
- Acquire and vacate right-of-way as required to support the department's mission.
- Conduct active public involvement and issue resolution efforts throughout the project development process.
- Develop CIP project bid packages through advertisement and contract award.
- Resolve bidding disputes.
- Manage the state's right-of-way per regulations and statutes.

**Major Component Accomplishments in 2019**

- Managed 282 projects (combined highway and aviation) in various stages of development.
- Delivered a \$355.0 program (combined highway and aviation) of bid-ready designs and contract documents. Representative projects delivered include the Bethel Chief Eddie Hoffman Highway Mile Post (MP) 0 to 4.4 Pavement Preservation (PP), Bethel Ridgecrest Drive MP 0-0.62 PP, Pioneer Avenue (Homer) PP, Glenn Highway Capacity Improvement, Phase II (Southbound Eagle River Bridge Replacement), Seward Highway MP 100-105 Improvements, Highway Safety Improvement Program (HSIP): Central Region Traffic Safety Corridor Left Turn Lanes, HSIP Sterling Highway and Main Street Intersection Improvements, Parks Highway, MP 48.8 to 52.3 Structures Removal, Ted Stevens Anchorage International Airport (ANC) Taxiway F Reconstruction and ANC RON 12-14 Lead-in Lights, Dillingham Downtown Streets Rehabilitation, Alaska Peninsula Highway Bridges, ANC RON 12-14 Joint Repair, Beaver Loop Road Improvements and Pedestrian Pathway, Benson Boulevard Storm Pipe Lining, Whittier Tunnel Surface and Drainage Improvements, Homer Airport Aircraft Rescue and Fire Fighting/Snow Removal Equipment Building Replacement, Kalifornsky Beach Road MP 9.6 Repairs, and HSIP Central Region Curve Warning Signs Upgrade.
- Processed 964 permits for driveways, approach roads, utilities, and other right-of-way encroachments collecting approximately \$290,000 of general program receipts revenue.
- Program to convert street lighting to light-emitting diode fixtures to reduce electrical costs is underway throughout the region.
- Relinquished four roadways and accomplished three roadway trades to/with local governments.
- Responded to the November 30, 2018 earthquake, including program management and design of emergency and permanent repair project. Provided earthquake response and bridge strike detour guidance with zero injury detours and re-openings. Managed damage at over 225 locations to determine appropriate repair and grouped them into approximately 15-20 design projects to be reconstructed by 2022. Representative projects include: Emergency Embankment and Drainage Repairs; Glenn Highway at Mirror Lake, Glenn/Parks Interchange; Seward Highway MP 50; Mat-Su Borough Road Repairs, and Knik River Road MP 10.5.

## **Key Component Challenges**

- Increased volume and complexity of utility relocations continues to exceed both the department's and utility companies' ability to deliver, resulting in delays to construction despite increased coordination and effort.
- Insufficient staff and resources in federal agencies to issue permits, collect revenue and conduct reviews for construction projects. Utility permit compliance continues to cause delays.
- Experiencing increased time in obtaining property value appraisals and resulting capital project delivery due to the reducing numbers of certified/licensed appraisers qualified to perform this work. These appraisals are necessary for obtaining right of way property interests when projects expand existing infrastructure onto adjoining property.
- Federal safety funds were recently restricted from use for enforcement support in Safety Corridors. Yet enforcement is nationally recognized alongside education and engineering as critical to reducing serious injury and death by nearly half (as shown in Central Region Safety Corridor Audits).
- Central Region has over 70 percent of Alaska's serious injury crashes and population. It also has all the top ten urban congested areas in the state.
- Freight speeds on older roads between ports and cities currently move at 25 to 35 MPH, which is Grade F nationally.
- Difficulty generating interest and finding qualified applicants to fill four long term non-permanent positions created to assist in earthquake recovery program.

## **Significant Changes in Results to be Delivered in FY2021**

- Results Based Alignment will continue to be a valuable tool used to quantify outcomes (not activities), drive decision-making, and determine program and service priorities within the Department of Transportation and Public Facilities.
- Preconstruction activities over this next year for several large projects (including Seward Highway MP 75-90 Phase II, Seward O'Malley to Dimond, and Sterling Highway MP 45-60) will shift many federal National Highway System resources from a pavement preservation focus to reconstruction.
- Central Region maintains steady and ongoing year by year reductions in deaths and injuries regardless of traffic and population increases. Supporting this effort, Central Region has begun full redesign of several of the worst road segments to reduce pedestrian, and other vulnerable user crashes along all top-ranking state roads by 20 percent or more. These projects are active in design, but design delivery of these projects is greater than one year.

## **Statutory and Regulatory Authority**

AS 02.15, Alaska Aeronautics Act of 1949  
AS 08.48, Architects, Engineers, Land Surveyors, and Landscape Architects  
AS 08.87, Real Estate Appraisers  
AS 19, Highways and Ferries  
AS 29.60, Municipal Government State Programs  
AS 30.30, Navigation, Harbors, Shipping, and Transportation Facilities, Abandoned and Derelict Vessels  
AS 34.60, Property, Relocation Assistance and Real Property Acquisition Practices  
AS 35, Public Buildings, Works, and Improvements  
AS 36, Public Contracts  
AS 44.42, State Government, Department of Transportation and Public Facilities  
AS 44.62, State Government, Administrative Procedure Act  
17 AAC 15 Transportation and Public Facilities  
CFR 14 Aeronautics  
CFR 15 Environment  
CFR 16 Environment  
CFR 23 Highways  
CFR 33 Environment  
CFR 41 Contracts  
CFR 42 Environment/ADA  
CFR 43 Lands  
CFR 49 Transportation

**Contact Information**

**Contact:** Wolfgang Junge, P.E., Central Region Director

**Phone:** (907) 269-0770

**E-mail:** wolfgang.junge@alaska.gov

Central Design and Engineering Services Personal Services Information				
Authorized Positions			Personal Services Costs	
	FY2020 Management Plan	FY2021 Governor		
Full-time	166	166	Annual Salaries	14,920,560
Part-time	15	15	COLA	142,641
Nonpermanent	6	7	Premium Pay	768,211
			Annual Benefits	9,095,165
			<i>Less 7.00% Vacancy Factor</i>	<i>(1,743,677)</i>
			Lump Sum Premium Pay	0
<b>Totals</b>	<b>187</b>	<b>188</b>	<b>Total Personal Services</b>	<b>23,182,900</b>

Position Classification Summary					
Job Class Title	Anchorage	Fairbanks	Juneau	Others	Total
Administrative Assistant I	2	0	0	0	2
Administrative Assistant III	1	0	0	0	1
Administrative Officer I	1	0	0	0	1
College Intern II	4	0	0	0	4
College Intern III	2	0	0	0	2
Drafting Technician III	7	0	0	0	7
Eia Mgr I	1	0	0	0	1
Electrical Engineer	1	0	0	0	1
Engineer/Architect I	20	0	0	0	20
Engineer/Architect II	7	0	0	0	7
Engineer/Architect III	10	0	0	0	10
Engineer/Architect IV	6	0	0	0	6
Engineer/Architect V	1	0	0	0	1
Engineering Assistant I	9	0	0	0	9
Engineering Assistant II	18	0	0	0	18
Engineering Assistant III	30	0	0	0	30
Engineering Geologist I	1	0	0	0	1
Env Imp Any II	4	0	0	0	4
Env Imp Any III	6	0	0	0	6
Environmental Impact Analyst I	2	0	0	0	2
Land Survey Manager I	1	0	0	0	1
Land Surveyor I	3	0	0	0	3
Land Surveyor II	1	0	0	0	1
Mlt Jrny	3	0	0	0	3
Mtlb Foreman	1	0	0	0	1
Mtlb Subjrny II	5	0	0	0	5
Mtlb Subjrny IV	1	0	0	0	1
Office Assistant I	1	0	0	0	1
Office Assistant II	2	0	0	0	2
Regional Engineering Geologist	1	0	0	0	1
Right-Of-Way Agent I	3	0	0	0	3
Right-Of-Way Agent II	7	0	0	0	7
Right-Of-Way Agent III	8	0	0	0	8
Right-Of-Way Agent IV	3	0	0	0	3
Right-Of-Way Assistant	2	0	0	0	2
Survey Instrument Technician I	1	0	0	0	1

**Position Classification Summary**

<b>Job Class Title</b>	<b>Anchorage</b>	<b>Fairbanks</b>	<b>Juneau</b>	<b>Others</b>	<b>Total</b>
Survey Lead	3	0	0	0	3
Survey, Journey	3	0	0	0	3
Survey, Sub-Journey II	1	0	0	0	1
Sv Inst Tech II	1	0	0	0	1
Tech Eng/Arch I	4	0	0	0	4
<b>Totals</b>	<b>188</b>	<b>0</b>	<b>0</b>	<b>0</b>	<b>188</b>

**Component Detail All Funds**  
**Department of Transportation/Public Facilities**

**Component:** Central Design and Engineering Services (2298)  
**RDU:** Design, Engineering and Construction (526)

Non-Formula Component

	FY2019 Actuals	FY2020 Conference Committee	FY2020 Authorized	FY2020 Management Plan	FY2021 Governor	FY2020 Management Plan vs FY2021 Governor	
71000 Personal Services	20,211.9	22,786.3	22,786.3	22,928.9	23,182.9	254.0	1.1%
72000 Travel	23.6	31.3	22.4	22.4	22.4	0.0	0.0%
73000 Services	890.9	609.6	609.6	609.6	609.6	0.0	0.0%
74000 Commodities	241.7	159.9	159.9	159.9	159.9	0.0	0.0%
75000 Capital Outlay	121.2	5.0	5.0	5.0	5.0	0.0	0.0%
77000 Grants, Benefits	0.0	0.0	0.0	0.0	0.0	0.0	0.0%
78000 Miscellaneous	0.0	0.0	0.0	0.0	0.0	0.0	0.0%
<b>Totals</b>	<b>21,489.3</b>	<b>23,592.1</b>	<b>23,583.2</b>	<b>23,725.8</b>	<b>23,979.8</b>	<b>254.0</b>	<b>1.1%</b>
<b>Fund Sources:</b>							
1004 Gen Fund (UGF)	106.7	106.8	106.8	106.8	106.8	0.0	0.0%
1005 GF/Prgm (DGF)	443.4	566.2	566.2	566.2	572.3	6.1	1.1%
1007 I/A Rcpts (Other)	13.7	39.2	39.2	39.2	39.7	0.5	1.3%
1061 CIP Rcpts (Other)	20,925.5	22,879.9	22,871.0	23,013.6	23,261.0	247.4	1.1%
<b>Unrestricted General (UGF)</b>	<b>106.7</b>	<b>106.8</b>	<b>106.8</b>	<b>106.8</b>	<b>106.8</b>	<b>0.0</b>	<b>0.0%</b>
<b>Designated General (DGF)</b>	<b>443.4</b>	<b>566.2</b>	<b>566.2</b>	<b>566.2</b>	<b>572.3</b>	<b>6.1</b>	<b>1.1%</b>
<b>Other Funds</b>	<b>20,939.2</b>	<b>22,919.1</b>	<b>22,910.2</b>	<b>23,052.8</b>	<b>23,300.7</b>	<b>247.9</b>	<b>1.1%</b>
<b>Federal Funds</b>	<b>0.0</b>	<b>0.0</b>	<b>0.0</b>	<b>0.0</b>	<b>0.0</b>	<b>0.0</b>	<b>0.0%</b>
<b>Positions:</b>							
Permanent Full Time	163	163	163	166	166	0	0.0%
Permanent Part Time	16	16	16	15	15	0	0.0%
Non Permanent	6	6	6	6	7	1	16.7%

**Change Record Detail - Multiple Scenarios with Descriptions**  
**Department of Transportation/Public Facilities**

**Component:** Central Design and Engineering Services (2298)  
**RDU:** Design, Engineering and Construction (526)

Scenario/Change Record Title	Trans Type	Totals	Personal Services	Travel	Services	Commodities	Capital Outlay	Grants, Benefits	Miscellaneous	Positions		NP
										PFT	PPT	
<b>***** Changes From FY2020 Conference Committee To FY2020 Authorized *****</b>												
<b>FY2020 Conference Committee</b>												
	ConfCom	23,592.1	22,786.3	31.3	609.6	159.9	5.0	0.0	0.0	163	16	6
1004 Gen Fund		106.8										
1005 GF/Prgm		566.2										
1007 I/A Rcpts		39.2										
1061 CIP Rcpts		22,879.9										
<b>Executive Branch 50% Travel Reduction</b>												
	Veto	-8.9	0.0	-8.9	0.0	0.0	0.0	0.0	0.0	0	0	0
1061 CIP Rcpts		-8.9										
<p>State agency travel budgets, not covered under the exemptions of public safety, health, and disaster management, were reduced 50% in the Governor's FY2020 budget. Veto action removes legislative increases to state travel. Agencies will rely on technology and management efficiencies to reduce the amount of state employee travel.</p> <p>The State's fiscal reality dictates a reduction in expenditures across all agencies.</p>												
<b>Subtotal</b>		<b>23,583.2</b>	<b>22,786.3</b>	<b>22.4</b>	<b>609.6</b>	<b>159.9</b>	<b>5.0</b>	<b>0.0</b>	<b>0.0</b>	<b>163</b>	<b>16</b>	<b>6</b>

<b>***** Changes From FY2020 Authorized To FY2020 Management Plan *****</b>												
<b>Transfer Survey Sub Journey II (25-0728) to Central Region Construction and CIP Support for AASHTOWare Project Support</b>												
	Trout	0.0	0.0	0.0	0.0	0.0	0.0	0.0	0.0	0	-1	0

Transfer part-time vacant Survey Sub Journey II (25-0728), range 56, located in Anchorage, from Central Design and Engineering Services to Central Region Construction & CIP and change to an Engineering Assistant I, range 17, for the AASHTOWare software project.

AASHTOWare is software owned by American Association of State Highway Transportation Officials. The project team is in need of an additional position to support long and short-term needs. This position has the responsibility of providing both technical and business support to all regions, as well as maintaining a relationship with software contractor.

<b>Transfer Positions from Northern Design &amp; Engineering Services for Earthquake Recovery</b>												
	Trin	100.0	100.0	0.0	0.0	0.0	0.0	0.0	0.0	2	0	0
1061 CIP Rcpts		100.0										

Transfer two positions from Northern Region Design and Engineering Services to Central Design and Engineering Services to support the effort to rebuild the transportation infrastructure after the November 2018 Southcentral earthquake.

Positions to transfer (with partial funding, capital improvement project receipt authority):  
Land Survey Spec I (25-1835), range 18, located in Anchorage, was changed to an Engineering Assistant I/II, range 17.  
Land Survey Spec I (25-1626), range 18, located in Anchorage, was changed to an Environmental Impact Analyst I/II/III, range 15.



**Change Record Detail - Multiple Scenarios with Descriptions**  
**Department of Transportation/Public Facilities**

**Component:** Central Design and Engineering Services (2298)

**RDU:** Design, Engineering and Construction (526)

Scenario/Change Record Title	Trans Type	Totals	Personal Services	Travel	Services	Commodities	Capital Outlay	Grants, Benefits	Miscellaneous	Positions		NP
										PFT	PPT	
<b>Transfer Engineering Assistant III (25-1431) from Northern Region Construction &amp; CIP Support for Earthquake Recovery</b>												
1061 CIP Rcpts	Trin	42.6	42.6	0.0	0.0	0.0	0.0	0.0	0.0	1	0	0
Transfer full-time Engineering Assistant III (25-1431), range 21, located in Anchorage from Northern Region Construction & CIP Support to Central Region Design and Engineering Services to support the effort to rebuild the transportation infrastructure after the November 2018 Southcentral earthquake.												
Position to transfer with partial funding, capital improvement project receipt authority.												
<b>Subtotal</b>		<b>23,725.8</b>	<b>22,928.9</b>	<b>22.4</b>	<b>609.6</b>	<b>159.9</b>	<b>5.0</b>	<b>0.0</b>	<b>0.0</b>	<b>166</b>	<b>15</b>	<b>6</b>
***** <b>Changes From FY2020 Management Plan To FY2021 Governor</b> *****												
<b>FY2021 Salary and Health Insurance Increases</b>												
SalAdj		254.0	254.0	0.0	0.0	0.0	0.0	0.0	0.0	0	0	0
1005 GF/Prgm		6.1										
1007 I/A Rcpts		0.5										
1061 CIP Rcpts		247.4										
FY2021 increase to LTC Health Insurance from \$1530 to \$1555 per member per month: \$32.7												
FY2021 GGU Salary Increases: \$160.9												
FY2021 increase to GGU Health Insurance from \$1530 to \$1555 per member per month: \$60.4												
<b>Add Electrical Engineer (25-T011) for Technical Expertise and Oversight</b>												
PosAdj		0.0	0.0	0.0	0.0	0.0	0.0	0.0	0.0	0	0	1
Add a non-permanent Electrical Engineer (25-T011), range 25, located in Anchorage, expiring 01/31/2022, to provide technical expertise and oversight for all electrical engineering projects and designs.												
<b>Totals</b>		<b>23,979.8</b>	<b>23,182.9</b>	<b>22.4</b>	<b>609.6</b>	<b>159.9</b>	<b>5.0</b>	<b>0.0</b>	<b>0.0</b>	<b>166</b>	<b>15</b>	<b>7</b>

**Line Item Detail (1676)**  
**Department of Transportation/Public Facilities**  
**Travel**

**Component:** Central Design and Engineering Services (2298)

Line Number	Line Name		FY2019 Actuals	FY2020 Management Plan	FY2021 Governor
2000	Travel		23.6	22.4	22.4
Object Class	Servicing Agency	Explanation	FY2019 Actuals	FY2020 Management Plan	FY2021 Governor
<b>2000 Travel Detail Totals</b>			<b>23.6</b>	<b>22.4</b>	<b>22.4</b>
2000	In-State Employee Travel	The Preconstruction Engineer, section chiefs, and functional managers of Preliminary Design and Environmental, Highway and Aviation Design, Materials, Utilities, Traffic, Right-of-Way travel for administration and coordination of projects, field reviews, permit inspections, surveys, staff meetings, hearings, training and conferences. This includes lodging, meals, and incidentals in association with the above travel.	6.9	16.1	16.1
2002	Out of State Employee Travel	Out of state travel and per diem for division/section chiefs or other employees. Travel is usually for administrative, conventions, meetings, and training not available in-state.	13.7	6.3	6.3
2005	Moving Costs	Employee moving costs.	3.0	0.0	0.0

**Line Item Detail (1676)**  
**Department of Transportation/Public Facilities**  
**Services**

**Component:** Central Design and Engineering Services (2298)

Line Number	Line Name		FY2019 Actuals	FY2020 Management Plan	FY2021 Governor
3000	Services		890.9	609.6	609.6
Object Class	Servicing Agency	Explanation	FY2019 Actuals	FY2020 Management Plan	FY2021 Governor
<b>3000 Services Detail Totals</b>			<b>890.9</b>	<b>609.6</b>	<b>609.6</b>
3000	Education Services	Training services and/or conference fees, membership fees, and employee tuition (excluding Information Technology).	28.5	30.0	30.0
3001	Financial Services	Credit card processing fees for permits paid for by credit card: driveway permits, encroachment permits, lane closure permits, property management permits for use of rights-of way, etc.	0.8	1.2	1.2
3003	Information Technology	Information technology (IT) training, IT consulting, IT equipment leases, software licensing, and software maintenance primarily for upgrades of AutoCAD licenses and aviation building network upgrades. Includes Microsoft Enterprise Agreement.	138.2	140.0	140.0
3004	Telecommunications	Long distance, local phone service, data communication, and cellular service provided by vendors.	8.0	10.0	10.0
3005	Health Services	Ergonomic assessment.	1.2	0.2	0.2
3006	Delivery Services	Postage, courier and freight expense.	24.7	24.0	24.0
3007	Advertising and Promotions	Advertising and legal notices for non-project specific publications.	1.1	1.0	1.0
3008	Utilities	Utility expenses for property managed by the Right-of-Way section.	1.6	1.5	1.5

**Line Item Detail (1676)**  
**Department of Transportation/Public Facilities**  
**Services**

**Component:** Central Design and Engineering Services (2298)

Object Class	Servicing Agency	Explanation	FY2019 Actuals	FY2020 Management Plan	FY2021 Governor
<b>3000 Services Detail Totals</b>			<b>890.9</b>	<b>609.6</b>	<b>609.6</b>
3009	Structure/Infrastructure/Land	Expenses for snow removal, janitorial, lawn care, and other services for property managed by the Right-of-Way section.	1.1	1.0	1.0
3010	Equipment/Machinery	Maintenance agreements for four fax machines; five Sharp copiers in: Preliminary and Engineering Design Services; Aviation and Highway Design; Right-of-Way, Traffic and Utilities; and repairs to survey and materials testing equipment.	58.3	39.0	39.0
3011	Other Services	Safety Services, copier click fees for excess copies, and US Travel Fee.	7.1	5.0	5.0
3011	Other Services	Program Management/Consulting.	7.2	10.0	10.0
3017	Inter-Agency Information Technology Non-Telecommunications	Admin - Department-wide Computer services provided by the Department of Administration, Enterprise Technology Services, such as central server, data storage, printing, network services, open connect, and task order system.	218.7	150.0	150.0
3018	Inter-Agency Information Technology Telecommunications	Admin - Department-wide Telecommunication services provided by the Department of Administration, Office of Information Technology, such as basic telephone services, equipment and features, dedicated voice/data line service, statewide paging, two-way radio, and video conference.	70.6	60.0	60.0
3021	Inter-Agency Mail	Admin - Department-wide Chargeback fees for central mail services such as mailing vendor payments and payroll warrants.	1.1	1.0	1.0
3024	Inter-Agency Legal	Law - Department-wide Legal services provided by the Department of Law.	26.3	5.0	5.0

**Line Item Detail (1676)**  
**Department of Transportation/Public Facilities**  
**Services**

**Component:** Central Design and Engineering Services (2298)

Object Class		Servicing Agency	Explanation	FY2019 Actuals	FY2020 Management Plan	FY2021 Governor
<b>3000 Services Detail Totals</b>				<b>890.9</b>	<b>609.6</b>	<b>609.6</b>
3026	Inter-Agency Insurance	Admin - Department-wide	Risk Management expense for Property/Casualty Insurance for Right of Way Properties.	12.9	5.0	5.0
3027	Inter-Agency Financial	Admin - Department-wide	Chargeback fee for HRM/IRIS/ALDER.	75.1	21.1	21.1
3028	Inter-Agency Americans with Disabilities Act Compliance	Admin - Department-wide	Chargeback fees for the statewide coordinator for the Americans with Disabilities Act (ADA).	1.3	0.5	0.5
3029	Inter-Agency Education/Training	Admin - Department-wide	Alaska Statutes.	0.1	0.1	0.1
3029	Inter-Agency Education/Training	E&ED - Department-wide	Procurement Training.	0.1	0.1	0.1
3031	Inter-Agency Construction		Survey instrument fee.	0.6	0.4	0.4
3036	Inter-Agency Safety		Badge fees for Ted Steven's Anchorage International Airport.	1.0	0.5	0.5
3037	State Equipment Fleet	Trans - State Equipment Fleet (2791)	State Equipment Fleet operating and replacement fees, credit card fuel, and vehicle maintenance and repairs. Budgeted amounts, if any, are for operating budget vehicles only; prior year actuals amount includes the cost of capital improvement project (CIP) vehicles, which are funded through an unbudgeted reimbursable services agreement.	100.3	0.0	0.0
3038	Inter-Agency Management/Consulting	Admin - Department-wide	Shared Services of Alaska accounts payable and travel and expense activities.	59.6	60.0	60.0
3038	Inter-Agency Management/Consulting	Trans - Central Design & Eng Svcs (2298)	Construction staff support to the Right-of-Way section to perform field inspections for Right-of-Way permits issued by Central Region and review of traffic control plans not funded by a construction project.	30.0	30.0	30.0

**Line Item Detail (1676)**  
**Department of Transportation/Public Facilities**  
**Services**

**Component:** Central Design and Engineering Services (2298)

Object Class	Servicing Agency	Explanation	FY2019 Actuals	FY2020 Management Plan	FY2021 Governor	
<b>3000 Services Detail Totals</b>			<b>890.9</b>	<b>609.6</b>	<b>609.6</b>	
3038	Inter-Agency Management/Consulting	Trans - Central Design & Eng Svcs (2298)	Construction staff support to the Utilities section for review of traffic control plans not funded by a construction project.	7.9	8.0	8.0
3039	DOT/PF Time & Equipment System		Vehicle usage billed to the operating budget based on established rates and actual usage of vehicles.	7.5	5.0	5.0

**Line Item Detail (1676)**  
**Department of Transportation/Public Facilities**  
**Commodities**

**Component:** Central Design and Engineering Services (2298)

Line Number	Line Name		FY2019 Actuals	FY2020 Management Plan	FY2021 Governor
4000	Commodities		241.7	159.9	159.9
Object Class	Servicing Agency	Explanation	FY2019 Actuals	FY2020 Management Plan	FY2021 Governor
<b>4000 Commodities Detail Totals</b>			<b>241.7</b>	<b>159.9</b>	<b>159.9</b>
4000	Business	Consumable office supplies, subscriptions, furniture and small tools with a value of less than \$5,000 per item used in daily operations.	98.2	90.8	90.8
4000	Business	Computers, printers and small printers. The component is on a four-year computer replacement schedule for a permanent full-time staff of 172. Computers for administrative staff are approximately \$1.5 each, and \$2.0 for engineering staff.	62.8	59.0	59.0
4003	Scientific and Medical	Laboratory and non-laboratory supply expenditures charged to the Central Region Materials Lab Cost Allocation Plan.	26.4	0.0	0.0
4014	Bottled Gas	Bottled Gas.	0.4	0.1	0.1
4015	Parts and Supplies	Parts and Supplies for the Central Region Materials and Survey Instrument Labs Cost Allocation Plans.	40.8	0.0	0.0
4019	Small Tools/Minor Equipment	Repair and maintenance supplies include small tools, equipment fuel, paint, survey markers, and parts used by materials, geology and survey crews.	13.1	10.0	10.0

**Line Item Detail (1676)**  
**Department of Transportation/Public Facilities**  
**Capital Outlay**

**Component:** Central Design and Engineering Services (2298)

Line Number	Line Name		FY2019 Actuals	FY2020 Management Plan	FY2021 Governor
5000	Capital Outlay		121.2	5.0	5.0
Object Class	Servicing Agency	Explanation	FY2019 Actuals	FY2020 Management Plan	FY2021 Governor
<b>5000 Capital Outlay Detail Totals</b>			<b>121.2</b>	<b>5.0</b>	<b>5.0</b>
5004	Equipment	Central Region Design and Engineering Services allocated portion of equipment and capital upgrades to the Aviation Building network. Capital Equipment expense for the Central Region Materials and Survey Instrument Lab Cost Allocation Plans.	121.2	5.0	5.0



**Revenue Detail (1681)**  
**Department of Transportation/Public Facilities**

**Component:** Central Design and Engineering Services (2298)

Revenue Type (OMB Fund Code) Revenue Source	Component	Comment	FY2019 Actuals	FY2020 Management Plan	FY2021 Governor
<b>5005 GF/Prgm (1005 GF/Prgm)</b>			<b>443.4</b>	<b>566.2</b>	<b>572.3</b>
5111 Program Receipts Transportation - Charges for Services		Receipts from issuing utility permits in the state's right-of-way and for inspection of utility installations. Receipts for the sale and lease of excess right-of-way and permits for encroachments in the state right-of-way. Receipts include charges assessed to the owners of illegally place signs within the State's right-of-way. These signs are removed and stored. When they are identified, they are returned to the owner after the owner has paid the established fee. Includes receipts collected from the Tourist Oriented Destination Signs (TODS) Program, per AS 19.05.070-100 application fee collected to process request for permit for encroachments in the right-of-way of a highway, per CH61, SLA 05 (HB279).	443.4	566.2	324.5
5113 Program Receipts Natural Resources - Rent and Royalties		Right-of-way.	0.0	0.0	247.8
<b>5007 I/A Rcpts (1007 I/A Rcpts)</b>			<b>13.7</b>	<b>39.2</b>	<b>39.7</b>
5301 Inter-Agency Receipts	NatRes - Department-wide	Reimbursable services agreement based on Design Right-of-way services associated with review of permit applications, permitting modifications requests, and follow-up tasks necessary for the Pebble Gold Project.	1.3	0.0	0.0
5301 Inter-Agency Receipts	Trans - Central Design & Eng Svcs (2298)	Reimbursement from any state agency's operating budget for	0.0	39.2	39.7

**Revenue Detail (1681)**  
**Department of Transportation/Public Facilities**

**Component:** Central Design and Engineering Services (2298)

Revenue Type (OMB Fund Code) Revenue Source	Component	Comment	FY2019 Actuals	FY2020 Management Plan	FY2021 Governor
		services provided. Typical requests are for professional construction management. Specific agreements and departments served vary from year to year.			
5301 Inter-Agency Receipts	Trans - Central Highways and Aviation (564)	Reimbursable services agreement from Central Region Highways and Aviation for professional services in the environmental field.	3.0	0.0	0.0
5301 Inter-Agency Receipts	NatRes - Department-wide	Reimbursable services agreement with Department of Natural Resources for Central Region Fire Support.	9.4	0.0	0.0
<b>5061 CIP Rcpts (1061 CIP Rcpts)</b>			<b>20,925.5</b>	<b>23,013.6</b>	<b>23,261.0</b>
5351 Capital Improvement Project Inter-Agency		Capital improvement project receipts for work in direct support of capital projects.	17,510.4	18,025.7	18,242.8
5351 Capital Improvement Project Inter-Agency		Recovery of indirect costs from the capital budget via the department's Indirect Cost Allocation Plan (ICAP).	3,415.1	4,987.9	5,018.2

**Inter-Agency Services (1682)**  
**Department of Transportation/Public Facilities**

**Component:** Central Design and Engineering Services (2298)

				FY2019 Actuals	FY2020 Management Plan	FY2021 Governor
<b>Component Totals</b>				<b>604.0</b>	<b>340.8</b>	<b>340.8</b>
With Department of Administration				439.4	297.7	297.7
With Department of Law				26.3	5.0	5.0
With Department of Education and Early Development				0.1	0.1	0.1
With Department of Transportation/Public Facilities				138.2	38.0	38.0
<b>Object Class</b>	<b>Servicing Agency</b>	<b>Explanation</b>		FY2019 Actuals	FY2020 Management Plan	FY2021 Governor
3017	Inter-Agency Information Technology Non-Telecommunications	Admin - Department-wide	Computer services provided by the Department of Administration, Enterprise Technology Services, such as central server, data storage, printing, network services, open connect, and task order system.	218.7	150.0	150.0
3018	Inter-Agency Information Technology Telecommunications	Admin - Department-wide	Telecommunication services provided by the Department of Administration, Office of Information Technology, such as basic telephone services, equipment and features, dedicated voice/data line service, statewide paging, two-way radio, and video conference.	70.6	60.0	60.0
3021	Inter-Agency Mail	Admin - Department-wide	Chargeback fees for central mail services such as mailing vendor payments and payroll warrants.	1.1	1.0	1.0
3024	Inter-Agency Legal	Law - Department-wide	Legal services provided by the Department of Law.	26.3	5.0	5.0
3026	Inter-Agency Insurance	Admin - Department-wide	Risk Management expense for Property/Casualty Insurance for Right of Way Properties.	12.9	5.0	5.0
3027	Inter-Agency Financial	Admin - Department-wide	Chargeback fee for HRM/IRIS/ALDER.	75.1	21.1	21.1
3028	Inter-Agency Americans with	Admin - Department-wide	Chargeback fees for the statewide	1.3	0.5	0.5

**Inter-Agency Services (1682)**  
**Department of Transportation/Public Facilities**

**Component:** Central Design and Engineering Services (2298)

<b>Object Class</b>	<b>Servicing Agency</b>	<b>Explanation</b>	<b>FY2019 Actuals</b>	<b>FY2020 Management Plan</b>	<b>FY2021 Governor</b>	
	Disabilities Act Compliance	coordinator for the Americans with Disabilities Act (ADA).				
3029	Inter-Agency Education/Training	Admin - Department-wide	Alaska Statutes.	0.1	0.1	0.1
3029	Inter-Agency Education/Training	E&ED - Department-wide	Procurement Training.	0.1	0.1	0.1
3037	State Equipment Fleet	Trans - State Equipment Fleet (2791)	State Equipment Fleet operating and replacement fees, credit card fuel, and vehicle maintenance and repairs. Budgeted amounts, if any, are for operating budget vehicles only; prior year actuals amount includes the cost of capital improvement project (CIP) vehicles, which are funded through an unbudgeted reimbursable services agreement.	100.3	0.0	0.0
3038	Inter-Agency Management/Consulting	Admin - Department-wide	Shared Services of Alaska accounts payable and travel and expense activities.	59.6	60.0	60.0
3038	Inter-Agency Management/Consulting	Trans - Central Design & Eng Svcs (2298)	Construction staff support to the Right-of-Way section to perform field inspections for Right-of-Way permits issued by Central Region and review of traffic control plans not funded by a construction project.	30.0	30.0	30.0
3038	Inter-Agency Management/Consulting	Trans - Central Design & Eng Svcs (2298)	Construction staff support to the Utilities section for review of traffic control plans not funded by a construction project.	7.9	8.0	8.0

**Personal Services Expenditure Detail**  
**Department of Transportation/Public Facilities**

**Scenario:** FY2021 Governor (16414)  
**Component:** Central Design and Engineering Services (2298)  
**RDU:** Design, Engineering and Construction (526)

PCN	Job Class Title	Time Status	Retire Code	Barg Unit	Location	Salary Sched	Range / Step	Comp Months	Split / Count	Annual Salaries	COLA	Premium Pay	Annual Benefits	Total Costs	UGF Amount
25-0175	Administrative Officer I	FT	A	GP	Anchorage	200	17N	12.0		80,016	1,097	0	48,428	129,541	0
25-0224	Engineer/Architect III	FT	A	SS	Anchorage	200	25F	12.0		121,452	0	0	63,816	185,268	0
25-0236	Engineering Assistant III	FT	A	GP	Anchorage	200	21K / L	12.0		95,640	1,511	14,634	59,636	171,421	0
25-0241	Engineering Assistant III	FT	A	GP	Anchorage	200	21C / D	12.0		77,586	1,226	11,883	51,930	142,625	0
25-0242	Administrative Assistant III	FT	A	GP	Anchorage	200	15M	12.0		67,644	927	0	43,846	112,417	0
25-0249	Engineer/Architect I	FT	A	GP	Anchorage	200	22C / D	12.0		82,959	1,137	0	49,518	133,614	0
25-0251	Sv Inst Tech II	FT	A	SS	Anchorage	600	17A	12.0		58,776	0	0	40,601	99,377	0
25-0252	Survey Instrument Technician I	FT	A	GP	Anchorage	200	16C / D	12.0		56,694	777	0	39,790	97,261	0
25-0378	Engineer/Architect IV	FT	A	SS	Anchorage	200	26K	12.0		134,136	0	0	68,514	202,650	0
25-0382	Engineer/Architect V	FT	A	SS	Anchorage	200	27R	12.0		174,132	0	0	81,040	255,172	11,397
25-0387	Engineer/Architect IV	FT	A	SS	Anchorage	200	26D / E	12.0		119,814	0	0	63,209	183,023	0
25-0389	Engineer/Architect IV	FT	A	SS	Anchorage	200	26P	12.0		161,242	0	0	77,056	238,298	0
25-0401	Administrative Assistant I	FT	A	GP	Anchorage	200	12N	12.0		56,520	775	0	39,725	97,020	0
25-0402	Engineer/Architect II	FT	A	SS	Anchorage	200	23F / J	12.0		105,911	0	0	58,060	163,971	0
25-0404	Engineer/Architect III	FT	A	SS	Anchorage	200	25N / O	12.0		144,411	0	0	71,854	216,265	0
25-0407	Engineering Assistant III	FT	A	GP	Anchorage	200	21B / C	12.0		76,852	1,053	0	47,256	125,161	0
25-0413	Engineer/Architect I	FT	A	GP	Anchorage	200	22K	12.0		101,868	1,396	0	56,522	159,786	0
25-0414	Engineer/Architect IV	FT	A	SS	Anchorage	200	26Q	12.0		162,528	0	0	77,454	239,982	0
25-0416	Engineer/Architect II	FT	A	SS	Anchorage	200	23E / F	12.0		102,598	0	0	56,833	159,431	0
25-0421	Right-Of-Way Agent III	FT	A	GP	Anchorage	200	18G	12.0		72,324	991	0	45,579	118,894	0
25-0423	Land Survey Manager I	FT	A	SS	Anchorage	200	23P	12.0		135,533	0	0	69,032	204,565	0
25-0424	Land Surveyor I	FT	A	GP	Anchorage	200	21L / M	12.0		100,215	1,373	0	55,910	157,498	0
25-0427	Right-Of-Way Agent I	FT	A	GP	Anchorage	200	14E / F	12.0		52,944	726	0	38,401	92,071	0
25-0429	Engineer/Architect II	FT	A	SS	Anchorage	200	23R / S	12.0		146,987	0	0	72,650	219,637	0
25-0433	Right-Of-Way Agent III	FT	A	GP	Anchorage	200	18G / J	12.0		73,930	1,013	0	46,174	121,117	0
25-0435	Engineer/Architect IV	FT	A	SS	Anchorage	200	26M / N	12.0		145,937	0	0	72,325	218,262	0
25-0452	Drafting Technician III	FT	A	GP	Anchorage	200	15A	12.0		47,712	654	0	36,463	84,829	0
25-0468	Office Assistant I	FT	A	GP	Anchorage	200	8B / C	12.0		32,328	443	0	30,765	63,536	0
25-0473	Right-Of-Way Agent IV	FT	A	SS	Anchorage	200	20P	12.0		110,215	0	0	59,654	169,869	0
25-0474	Right-Of-Way Agent IV	FT	A	SS	Anchorage	200	20K	12.0		92,124	0	0	52,953	145,077	0
25-0475	Engineering Assistant I	FT	A	GP	Anchorage	200	17B / C	12.0		57,915	854	4,381	41,865	105,015	0
25-0476	Right-Of-Way Agent III	FT	A	GP	Anchorage	200	18D / E	12.0		66,954	918	0	43,590	111,462	0
25-0477	Right-Of-Way Agent III	FT	A	GP	Anchorage	200	18J	12.0		75,288	1,032	0	46,677	122,997	0
25-0479	Engineering Assistant III	FT	A	GP	Anchorage	200	21G	12.0		88,416	1,305	6,801	54,059	150,581	0
25-0480	Right-Of-Way Agent III	FT	A	GP	Anchorage	200	18K	12.0		77,736	1,065	0	47,584	126,385	0
25-0482	Right-Of-Way Agent II	FT	A	GP	Anchorage	200	16G / J	12.0		64,572	885	0	42,708	108,165	0
25-0485	Right-Of-Way Agent II	FT	A	GP	Anchorage	200	16J / K	12.0		67,749	928	0	43,885	112,562	0
25-0486	Right-Of-Way Agent III	FT	A	GP	Anchorage	200	18E / F	12.0		69,579	954	0	44,562	115,095	0

Note: If a position is split, an asterisk (\*) will appear in the Split/Count column. If the split position is also counted in the component, two asterisks (\*\*) will appear in this column. [No valid job title] appearing in the Job Class Title indicates that the PCN has an invalid class code or invalid range for the class code effective date of this scenario.

**Personal Services Expenditure Detail**  
**Department of Transportation/Public Facilities**

**Scenario:** FY2021 Governor (16414)  
**Component:** Central Design and Engineering Services (2298)  
**RDU:** Design, Engineering and Construction (526)

PCN	Job Class Title	Time Status	Retire Code	Barg Unit	Location	Salary Sched	Range / Step	Comp Months	Split / Count	Annual Salaries	COLA	Premium Pay	Annual Benefits	Total Costs	UGF Amount
25-0487	Drafting Technician III	FT	A	GG	Anchorage	200	15O	12.0		72,804	998	0	45,757	119,559	0
25-0488	Drafting Technician III	FT	A	GP	Anchorage	200	15F / G	12.0		58,877	807	0	40,598	100,282	0
25-0492	Right-Of-Way Assistant	FT	A	GP	Anchorage	200	12A	12.0		39,264	538	0	33,334	73,136	0
25-0495	Office Assistant II	FT	A	GP	Anchorage	200	10A	12.0		34,848	478	0	31,698	67,024	0
25-0496	Right-Of-Way Assistant	FT	A	GP	Anchorage	200	12C / D	12.0		42,795	586	0	34,642	78,023	0
25-0497	Administrative Assistant I	FT	A	GP	Anchorage	200	12E / F	12.0		45,073	618	0	35,485	81,176	0
25-0499	Right-Of-Way Agent II	FT	A	GP	Anchorage	200	16C / D	12.0		55,404	759	0	39,312	95,475	0
25-0501	Engineering Assistant II	FT	A	GP	Anchorage	200	19E / F	12.0		72,543	1,070	5,563	47,721	126,897	0
25-0504	Tech Eng/Arch I	FT	A	GP	Anchorage	200	24L / M	12.0		124,720	1,709	0	64,987	191,416	0
25-0507	Engineering Assistant III	FT	A	GP	Anchorage	200	21G	12.0		88,416	1,305	6,801	54,059	150,581	0
25-0515	Engineering Assistant III	FT	A	GG	Anchorage	200	21O	12.0		109,145	1,611	8,402	62,330	181,488	0
25-0531	Engineering Assistant II	FT	A	GP	Anchorage	200	19C / D	12.0		69,264	1,092	10,398	48,297	129,051	0
25-0541	Engineering Assistant III	FT	A	GP	Anchorage	200	21L	12.0		98,220	1,450	7,555	57,969	165,194	0
25-0561	Right-Of-Way Agent I	FT	A	GP	Anchorage	200	14C / D	12.0		47,934	657	0	36,545	85,136	0
25-0590	Mlt Jrny	PT	A	LL	Anchorage	2AA	53P	9.0		53,060	0	19,047	40,723	112,830	0
25-0598	Engineering Assistant III	FT	A	GP	Anchorage	200	21C / D	12.0		78,176	1,153	5,941	49,947	135,217	0
25-0599	Engineer/Architect I	FT	A	GP	Anchorage	200	22G / J	12.0		97,520	1,336	0	54,912	153,768	0
25-0605	Mtlb Subjrny II	PT	A	LL	Anchorage	2AA	57C / D	9.5		33,764	0	10,573	31,216	75,553	0
25-0612	Survey, Sub-Journey II	PT	A	LL	Anchorage	2AA	56B / C	11.0		39,122	0	10,757	35,604	85,483	0
25-0616	Engineer/Architect III	FT	A	SS	Anchorage	200	25D / E	12.0		113,493	0	0	60,868	174,361	0
25-0617	Engineer/Architect II	FT	A	GP	Anchorage	200	23J / K	12.0		106,139	1,455	0	58,104	165,698	0
25-0619	Engineer/Architect I	FT	A	GP	Anchorage	200	22B / C	12.0		81,009	1,110	0	48,796	130,915	0
25-0620	Engineer/Architect I	FT	A	GP	Anchorage	200	22A / B	12.0		79,592	1,091	0	48,271	128,954	0
25-0621	Eia Mgr I	FT	A	SS	Anchorage	200	21N	12.0		109,313	0	0	59,320	168,633	0
25-0623	Engineer/Architect III	FT	A	SS	Anchorage	200	25L	12.0		133,656	0	0	68,336	201,992	0
25-0626	Engineering Assistant II	FT	A	GP	Anchorage	200	19A	12.0		63,264	934	4,866	44,026	113,090	0
25-0627	Tech Eng/Arch I	FT	A	SS	Anchorage	200	24Q	12.0		161,478	0	0	77,129	238,607	0
25-0628	Engineering Assistant III	FT	A	GP	Anchorage	200	21O	12.0		109,145	1,611	8,402	62,330	181,488	0
25-0629	Engineering Assistant III	FT	A	GP	Anchorage	200	21C / D	12.0		79,592	1,254	11,883	52,673	145,402	0
25-0631	Engineer/Architect I	FT	A	GP	Anchorage	200	22N	12.0		112,668	1,544	0	60,523	174,735	0
25-0632	Land Surveyor II	FT	A	SS	Anchorage	200	22O / P	12.0		125,562	0	0	65,338	190,900	0
25-0634	Engineering Assistant III	FT	A	GP	Anchorage	200	21E / F	12.0		84,709	1,509	25,410	59,578	171,206	0
25-0635	Engineering Assistant II	FT	A	GP	Anchorage	200	19B / C	12.0		67,494	994	5,032	45,654	119,174	0
25-0636	Engineer/Architect III	FT	A	SS	Anchorage	200	25D / E	12.0		113,151	0	0	60,741	173,892	0
25-0638	Engineering Assistant III	FT	A	GP	Anchorage	200	21G	12.0		88,416	1,398	13,602	56,578	159,994	0
25-0640	Engineering Assistant III	FT	A	GP	Anchorage	200	21D / E	12.0		80,799	1,276	12,318	53,281	147,674	0
25-0643	Engineering Assistant III	FT	A	GP	Anchorage	200	21G / J	12.0		91,661	1,629	27,204	62,818	183,312	0
25-0644	Engineering Assistant II	FT	A	GP	Anchorage	200	19K	12.0		83,076	1,226	6,390	51,929	142,621	0

Note: If a position is split, an asterisk (\*) will appear in the Split/Count column. If the split position is also counted in the component, two asterisks (\*\*) will appear in this column.  
[No valid job title] appearing in the Job Class Title indicates that the PCN has an invalid class code or invalid range for the class code effective date of this scenario.

**Personal Services Expenditure Detail**  
**Department of Transportation/Public Facilities**

**Scenario:** FY2021 Governor (16414)  
**Component:** Central Design and Engineering Services (2298)  
**RDU:** Design, Engineering and Construction (526)

PCN	Job Class Title	Time Status	Retire Code	Barg Unit	Location	Salary Sched	Range / Step	Comp Months	Split / Count	Annual Salaries	COLA	Premium Pay	Annual Benefits	Total Costs	UGF Amount
25-0646	Engineering Assistant II	FT	A	GP	Anchorage	200	19L / M	12.0		88,444	1,302	6,598	53,994	150,338	0
25-0648	Engineering Assistant III	FT	A	GP	Anchorage	200	21C	12.0		77,232	1,384	23,766	56,200	158,582	0
25-0649	Engineering Assistant III	FT	A	GP	Anchorage	200	21M / N	12.0		104,371	1,592	11,765	61,807	179,535	0
25-0651	Engineer/Architect I	FT	A	GP	Anchorage	200	22D / E	12.0		86,528	1,186	0	50,840	138,554	0
25-0652	Engineering Assistant III	FT	A	GP	Anchorage	200	21F / G	12.0		86,646	1,323	9,875	54,542	152,386	0
25-0655	Engineering Assistant I	FT	A	GP	Anchorage	200	17B / C	12.0		57,127	843	4,381	41,573	103,924	0
25-0656	Engineer/Architect I	FT	A	GP	Anchorage	200	22C / D	12.0		84,334	1,156	0	50,028	135,518	0
25-0657	Engineer/Architect I	FT	A	GP	Anchorage	200	22G	12.0		94,740	1,298	0	53,882	149,920	0
25-0659	Engineering Assistant I	FT	A	GP	Anchorage	200	17B / C	12.0		58,877	867	4,381	42,221	106,346	0
25-0661	Engineering Assistant III	FT	A	GP	Anchorage	200	21K / L	12.0		96,027	1,416	7,317	57,069	161,829	0
25-0662	Engineering Assistant II	FT	A	GP	Anchorage	200	19C / D	12.0		69,789	1,028	5,199	46,566	122,582	0
25-0663	Env Imp Any III	FT	A	GP	Anchorage	200	19C / D	12.0		69,159	948	0	44,407	114,514	0
25-0665	Engineering Assistant III	FT	A	GP	Anchorage	200	21G	12.0		88,416	1,305	6,801	54,059	150,581	0
25-0667	Drafting Technician III	FT	A	GP	Anchorage	200	15A	12.0		47,712	654	0	36,463	84,829	0
25-0670	Engineer/Architect III	FT	A	SS	Anchorage	200	25K / L	12.0		132,956	0	0	68,077	201,033	0
25-0671	Engineer/Architect I	FT	A	GP	Anchorage	200	22A	12.0		77,232	1,058	0	47,397	125,687	0
25-0672	Engineer/Architect II	FT	A	SS	Anchorage	200	23A	12.0		89,040	0	0	51,811	140,851	0
25-0675	Engineer/Architect I	FT	A	GP	Anchorage	200	22D / E	12.0		86,646	1,187	0	50,884	138,717	0
25-0676	Engineer/Architect I	FT	A	GP	Anchorage	200	22B / C	12.0		81,849	1,122	0	49,107	132,078	0
25-0683	Engineering Assistant III	FT	A	GP	Anchorage	200	21A	12.0		72,324	1,067	5,563	47,640	126,594	0
25-0685	Engineering Assistant III	FT	A	GG	Anchorage	200	21A / B	12.0		74,514	1,097	5,563	48,451	129,625	0
25-0687	Engineer/Architect I	FT	A	GP	Anchorage	200	22A	12.0		77,232	1,058	0	47,397	125,687	0
25-0689	Engineering Assistant II	FT	A	GP	Anchorage	200	19D / E	12.0		71,122	1,049	5,392	47,131	124,694	0
25-0695	Right-Of-Way Agent III	FT	A	GP	Anchorage	200	18C	12.0		63,264	867	0	42,223	106,354	0
25-0702	Drafting Technician III	FT	A	GP	Anchorage	200	15F / G	12.0		58,702	925	8,763	43,779	112,169	0
25-0705	Drafting Technician III	FT	A	GP	Anchorage	200	15K	12.0		63,456	870	0	42,294	106,620	0
25-0706	Drafting Technician III	FT	A	GP	Anchorage	200	15A	12.0		47,712	654	0	36,463	84,829	0
25-0712	Right-Of-Way Agent II	FT	A	GP	Anchorage	200	16E	12.0		59,052	809	0	40,663	100,524	0
25-0715	Right-Of-Way Agent II	FT	A	GP	Anchorage	200	16B / C	12.0		53,326	731	0	38,542	92,599	0
25-0717	Engineering Assistant III	FT	A	GP	Anchorage	200	21G	12.0		88,416	1,305	6,801	54,059	150,581	0
25-0719	Right-Of-Way Agent I	FT	A	GP	Anchorage	200	14B / C	12.0		47,582	652	0	36,415	84,649	0
25-0721	Mtlb Subjry II	PT	A	LL	Anchorage	2AA	57F	9.0		34,813	0	11,718	31,250	77,781	0
25-0724	Engineering Geologist I	FT	A	GP	Anchorage	200	16B / C	12.0		54,604	804	4,090	40,531	100,029	0
25-0725	Regional Engineering Geologist	FT	A	SS	Anchorage	200	22O / P	12.0		125,067	0	0	65,155	190,222	0
25-0726	Survey, Journey	PT	A	LL	Anchorage	2AA	54E / F	11.0		49,017	0	15,258	40,937	105,212	0
25-0733	Engineering Assistant III	FT	A	GP	Anchorage	200	21A	12.0		72,324	1,067	5,563	47,640	126,594	0
25-0736	Mtlb Foreman	PT	A	LL	Anchorage	2AA	51M	9.0		57,381	0	24,833	44,467	126,681	0
25-0738	Engineering Assistant II	FT	A	GP	Anchorage	200	19G / J	12.0		80,191	1,180	5,941	50,694	138,006	0

Note: If a position is split, an asterisk (\*) will appear in the Split/Count column. If the split position is also counted in the component, two asterisks (\*\*) will appear in this column. [No valid job title] appearing in the Job Class Title indicates that the PCN has an invalid class code or invalid range for the class code effective date of this scenario.

**Personal Services Expenditure Detail**  
**Department of Transportation/Public Facilities**

**Scenario:** FY2021 Governor (16414)  
**Component:** Central Design and Engineering Services (2298)  
**RDU:** Design, Engineering and Construction (526)

PCN	Job Class Title	Time Status	Retire Code	Barg Unit	Location	Salary Sched	Range / Step	Comp Months	Split / Count	Annual Salaries	COLA	Premium Pay	Annual Benefits	Total Costs	UGF Amount
25-0741	Mtlb Subjrnj II	FT	A	LL	Anchorage	2AA	57E / F	12.0		45,052	0	11,324	39,568	95,944	0
25-0743	Mtlb Subjrnj II	PT	A	LL	Anchorage	2AA	57E	9.0		33,643	0	11,324	30,670	75,637	0
25-0747	Engineering Assistant III	FT	A	GP	Anchorage	200	21A	12.0		72,326	1,067	5,563	47,640	126,596	0
25-0751	Env Imp Any III	FT	A	GP	Anchorage	200	19K / L	12.0		85,439	1,171	0	50,437	137,047	0
25-0752	Env Imp Any II	FT	A	GP	Anchorage	200	17A / B	12.0		56,866	779	0	39,853	97,498	0
25-0753	Env Imp Any III	FT	A	GP	Anchorage	200	19F / G	12.0		75,997	1,041	0	46,940	123,978	0
25-0755	Env Imp Any III	FT	A	GP	Anchorage	200	19F / G	12.0		75,902	1,040	0	46,904	123,846	0
25-0756	Env Imp Any III	FT	A	GP	Anchorage	200	19A	12.0		63,264	867	0	42,223	106,354	0
25-0762	Env Imp Any II	FT	A	GP	Anchorage	200	17A	12.0		54,888	752	0	39,121	94,761	0
25-0766	Engineering Assistant II	FT	A	GP	Anchorage	200	19A	12.0		63,264	934	4,866	44,026	113,090	0
25-0770	Engineering Assistant II	FT	A	GP	Anchorage	200	19D / E	12.0		72,047	1,061	5,392	47,474	125,974	0
25-0771	Engineer/Architect IV	FT	A	SS	Anchorage	200	26F / J	12.0		126,161	0	0	65,560	191,721	0
25-0791	Survey, Journey	PT	A	LL	Anchorage	2AA	54F	11.0		50,174	0	18,753	42,660	111,587	0
25-0792	Survey Lead	PT	A	LL	Anchorage	2AA	53N	11.0		64,261	0	26,546	50,764	141,571	0
25-0797	Engineer/Architect III	FT	A	SS	Anchorage	200	25J / K	12.0		126,575	0	0	65,714	192,289	0
25-0800	Engineer/Architect I	FT	A	GP	Anchorage	200	22E / F	12.0		90,072	1,234	0	52,153	143,459	0
25-0802	Engineering Assistant I	FT	A	GP	Anchorage	200	17B / C	12.0		57,127	843	4,381	41,573	103,924	0
25-0805	Engineering Assistant I	FT	A	GP	Anchorage	200	17B / C	12.0		57,040	842	4,381	41,541	103,804	0
25-0808	Engineering Assistant II	FT	A	GP	Anchorage	200	19A / B	12.0		65,244	961	4,866	44,759	115,830	0
25-0810	Engineering Assistant III	FT	A	GP	Anchorage	200	21A	12.0		72,324	1,067	5,563	47,640	126,594	0
25-0819	Engineering Assistant II	FT	A	GP	Anchorage	200	19B / C	12.0		67,404	993	5,032	45,621	119,050	0
25-0820	Engineering Assistant III	FT	A	GP	Anchorage	200	21F / G	12.0		88,180	1,208	0	51,452	140,840	0
25-0821	Engineering Assistant I	FT	A	GP	Anchorage	200	17B / C	12.0		57,827	852	4,381	41,832	104,892	0
25-0886	Engineer/Architect I	FT	A	GP	Anchorage	200	22G / J	12.0		97,193	1,332	0	54,791	153,316	0
25-0887	Survey Lead	PT	A	LL	Anchorage	2AA	53J	11.0		55,473	0	19,642	44,952	120,067	0
25-0889	Survey Lead	PT	A	LL	Anchorage	2AA	53M / N	11.0		62,676	0	21,930	48,467	133,073	0
25-0893	Mtlb Subjrnj II	PT	A	LL	Anchorage	2AA	57F / J	9.0		35,031	0	13,392	31,951	80,374	0
25-0925	Engineering Assistant I	FT	A	GP	Anchorage	200	17A / B	12.0		56,522	919	10,556	43,636	111,633	0
25-0927	Tech Eng/Arch I	FT	A	GP	Anchorage	200	24J / K	12.0		113,614	1,557	0	60,873	176,044	0
25-0929	Land Surveyor I	FT	A	GP	Anchorage	200	21E / F	12.0		85,334	1,169	0	50,398	136,901	0
25-0933	Office Assistant II	FT	A	GP	Anchorage	200	10C / D	12.0		37,745	517	0	32,771	71,033	0
25-0954	Survey, Journey	PT	A	LL	Anchorage	2AA	54L	11.0		56,026	0	17,634	44,413	118,073	0
25-0958	Env Imp Any III	FT	A	GP	Anchorage	200	19A	12.0		63,264	867	0	42,223	106,354	0
25-0960	Engineer/Architect III	FT	A	SS	Anchorage	200	25K / L	12.0		131,031	0	0	67,364	198,395	0
25-0962	Engineer/Architect I	FT	A	GP	Anchorage	200	22C / D	12.0		85,209	1,168	0	50,352	136,729	0
25-0963	Tech Eng/Arch I	FT	A	GP	Anchorage	200	24S / T	12.0		159,050	2,082	0	76,339	237,471	0
25-0964	Engineer/Architect III	FT	A	SS	Anchorage	200	25P	12.0		154,885	0	0	75,091	229,976	0
25-0967	Engineer/Architect III	FT	A	SS	Anchorage	200	25O	12.0		149,280	0	0	73,359	222,639	0

Note: If a position is split, an asterisk (\*) will appear in the Split/Count column. If the split position is also counted in the component, two asterisks (\*\*) will appear in this column. [No valid job title] appearing in the Job Class Title indicates that the PCN has an invalid class code or invalid range for the class code effective date of this scenario.



**Personal Services Expenditure Detail**  
**Department of Transportation/Public Facilities**

**Scenario:** FY2021 Governor (16414)  
**Component:** Central Design and Engineering Services (2298)  
**RDU:** Design, Engineering and Construction (526)

PCN	Job Class Title	Time Status	Retire Code	Barg Unit	Location	Salary Sched	Range / Step	Comp Months	Split / Count	Annual Salaries	COLA	Premium Pay	Annual Benefits	Total Costs	UGF Amount
25-1431	Engineering Assistant III	FT	A	GP	Anchorage	200	21F / G	12.0		88,180	1,389	13,167	56,329	159,065	0
25-1504	Mlt Jrny	PT	A	LL	Anchorage	2AA	53N	6.0		35,052	0	25,282	31,691	92,025	0
25-1517	Mlt Jrny	FT	A	LL	Anchorage	2AA	53F	12.0		58,333	0	21,037	48,085	127,455	0
25-1626	Env Imp Any II	FT	A	GP	Anchorage	200	17B	12.0		56,952	780	0	39,885	97,617	0
25-1649	Mtlb Subjrny IV	PT	A	LL	Anchorage	2AA	54J	6.0		28,397	0	20,482	27,448	76,327	0
25-1835	Engineering Assistant I	FT	A	GG	Anchorage	200	17B / C	12.0		57,040	842	4,381	41,541	103,804	0
25-2301	Right-Of-Way Agent IV	FT	A	SS	Anchorage	200	20D / E	12.0		80,993	0	0	48,830	129,823	0
25-3408	Engineering Assistant II	FT	A	GP	Anchorage	200	19D / E	12.0		72,047	1,061	5,392	47,474	125,974	0
25-3438	Engineering Assistant II	FT	A	GP	Anchorage	200	19B / C	12.0		65,514	967	5,032	44,921	116,434	0
25-3439	Engineering Assistant III	FT	A	GP	Anchorage	200	21C / D	12.0		78,530	1,198	8,912	51,179	139,819	0
25-3440	Engineering Assistant III	FT	A	GP	Anchorage	200	21G	12.0		88,416	1,398	13,602	56,578	159,994	0
25-3441	Engineer/Architect I	FT	A	GP	Anchorage	200	22G	12.0		94,740	1,298	0	53,882	149,920	0
25-3442	Engineer/Architect I	FT	A	GP	Anchorage	200	22C / D	12.0		83,084	1,139	0	49,565	133,788	0
25-3443	Engineering Assistant III	FT	A	GP	Anchorage	200	21N	12.0		105,199	1,608	12,147	62,255	181,209	0
25-3444	Engineering Assistant II	FT	A	GP	Anchorage	200	19B / C	12.0		66,684	983	5,032	45,354	118,053	0
25-3445	Engineering Assistant II	FT	A	GP	Anchorage	200	19L	12.0		85,776	1,266	6,598	53,006	146,646	0
25-3446	Engineering Assistant II	FT	A	GP	Anchorage	200	19F / G	12.0		76,567	1,128	5,766	49,286	132,747	0
25-3447	Right-Of-Way Agent III	FT	A	GG	Anchorage	200	18N / O	12.0		88,374	1,211	0	51,524	141,109	0
25-3448	Land Surveyor I	FT	A	GP	Anchorage	200	21L / M	12.0		99,151	1,359	0	55,516	156,026	0
25-3459	Engineering Assistant I	FT	A	GP	Anchorage	200	17A / B	12.0		56,350	830	4,222	41,226	102,628	0
25-3498	Env Imp Any II	FT	A	GP	Anchorage	200	17A / B	12.0		56,780	836	4,222	41,385	103,223	0
25-3553	Engineer/Architect II	FT	A	SS	Anchorage	200	23J	12.0		109,200	0	0	59,278	168,478	0
25-3559	Engineer/Architect I	FT	A	GP	Anchorage	200	22E	12.0		88,416	1,212	0	51,540	141,168	0
25-3560	Engineer/Architect II	FT	A	GG	Anchorage	200	23M	12.0		116,520	1,597	0	61,949	180,066	0
25-3587	Environmental Impact Analyst I	FT	A	GP	Anchorage	200	15A / B	12.0		49,118	673	0	36,984	86,775	0
25-3588	Environmental Impact Analyst I	FT	A	GP	Anchorage	200	15A / B	12.0		49,118	673	0	36,984	86,775	0
25-3683	Right-Of-Way Agent II	FT	A	GP	Anchorage	200	16F / G	12.0		62,560	857	0	41,963	105,380	0
25-3684	Right-Of-Way Agent II	FT	A	GP	Anchorage	200	16F / G	12.0		61,240	839	0	41,474	103,553	0
25-3736	Engineer/Architect I	FT	A	GP	Anchorage	200	22C	12.0		82,584	1,132	0	49,379	133,095	0
25-IN1215	College Intern II	NP	N	EE	Anchorage	N00	9A	9.0		25,140	0	0	3,160	28,300	0
25-IN1436	College Intern III	NP	N	EE	Anchorage	N00	10A	6.0		17,794	0	0	2,237	20,031	0
25-IN1437	College Intern III	NP	N	EE	Anchorage	N00	10A	9.5		28,173	0	0	3,541	31,714	0
25-IN1438	College Intern II	NP	N	EE	Anchorage	N00	9A	9.5		26,537	0	0	3,336	29,873	0
25-IN1441	College Intern II	NP	N	EE	Anchorage	N00	9A	6.0		16,760	0	0	2,107	18,867	0
25-IN1503	College Intern II	NP	N	EE	Anchorage	N00	9A	9.0		25,140	0	0	3,160	28,300	0
25-T011	Electrical Engineer	NP	A	XE	Anchorage	N00	25P / Q	12.0		145,064	0	0	39,997	185,061	0

Note: If a position is split, an asterisk (\*) will appear in the Split/Count column. If the split position is also counted in the component, two asterisks (\*\*) will appear in this column. [No valid job title] appearing in the Job Class Title indicates that the PCN has an invalid class code or invalid range for the class code effective date of this scenario.

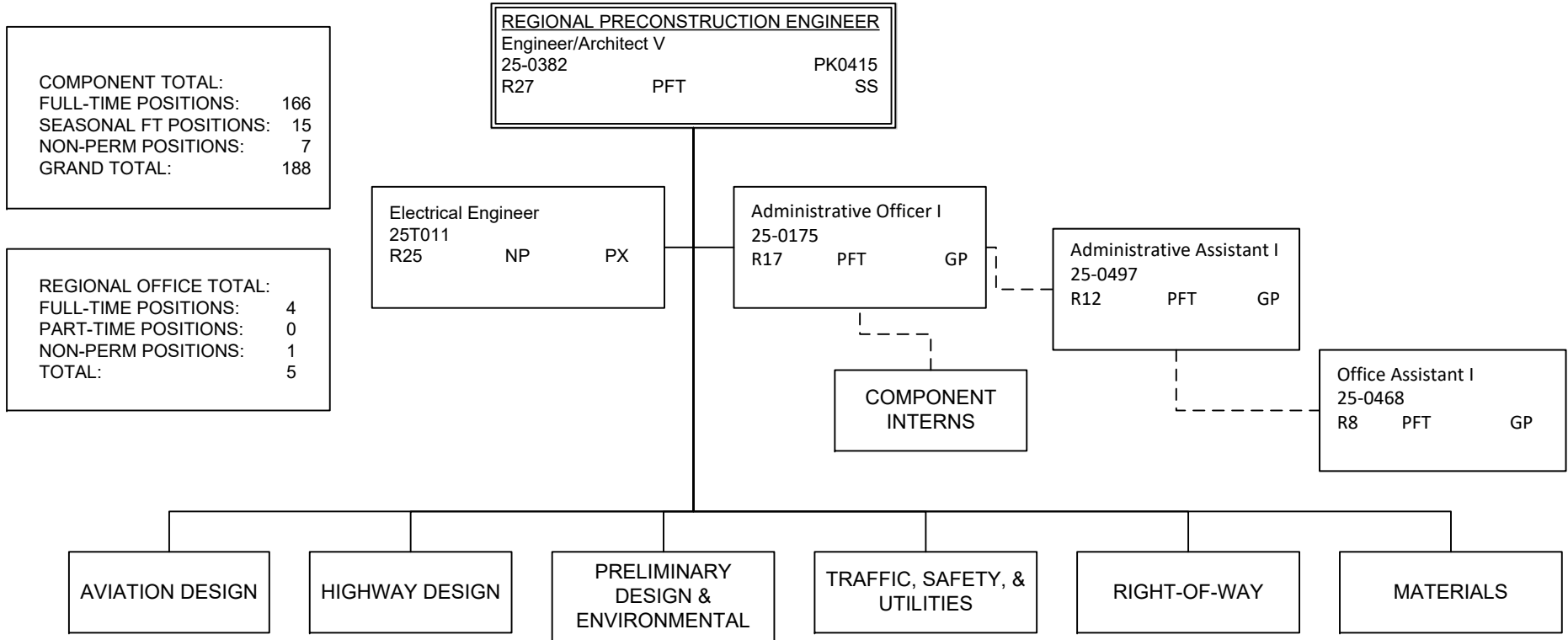
**Personal Services Expenditure Detail**  
**Department of Transportation/Public Facilities**

**Scenario:** FY2021 Governor (16414)  
**Component:** Central Design and Engineering Services (2298)  
**RDU:** Design, Engineering and Construction (526)

PCN	Job Class Title	Time Status	Retire Code	Barg Unit	Location	Salary Sched	Range / Step	Comp Months	Split / Count	Annual Salaries	COLA	Premium Pay	Annual Benefits	Total Costs	UGF Amount
	<b>Total Positions</b>		<b>New</b>	<b>Deleted</b>										<b>Total Salary Costs:</b>	14,920,560
														<b>Total COLA:</b>	142,641
	<b>Full Time Positions:</b>	166	0	0										<b>Total Premium Pay:</b>	768,211
	<b>Part Time Positions:</b>	15	0	0										<b>Total Benefits:</b>	9,095,165
	<b>Non Permanent Positions:</b>	7	1	0											
	<b>Positions in Component:</b>	188	1	0											
	<b>Total Component Months:</b>	2,196.5													
														<b>Total Pre-Vacancy:</b>	24,926,577
														<b>Minus Vacancy Adjustment of 7.00%:</b>	(1,743,677)
														<b>Total Post-Vacancy:</b>	23,182,900
														<b>Plus Lump Sum Premium Pay:</b>	0
														<b>Personal Services Line 100:</b>	23,182,900

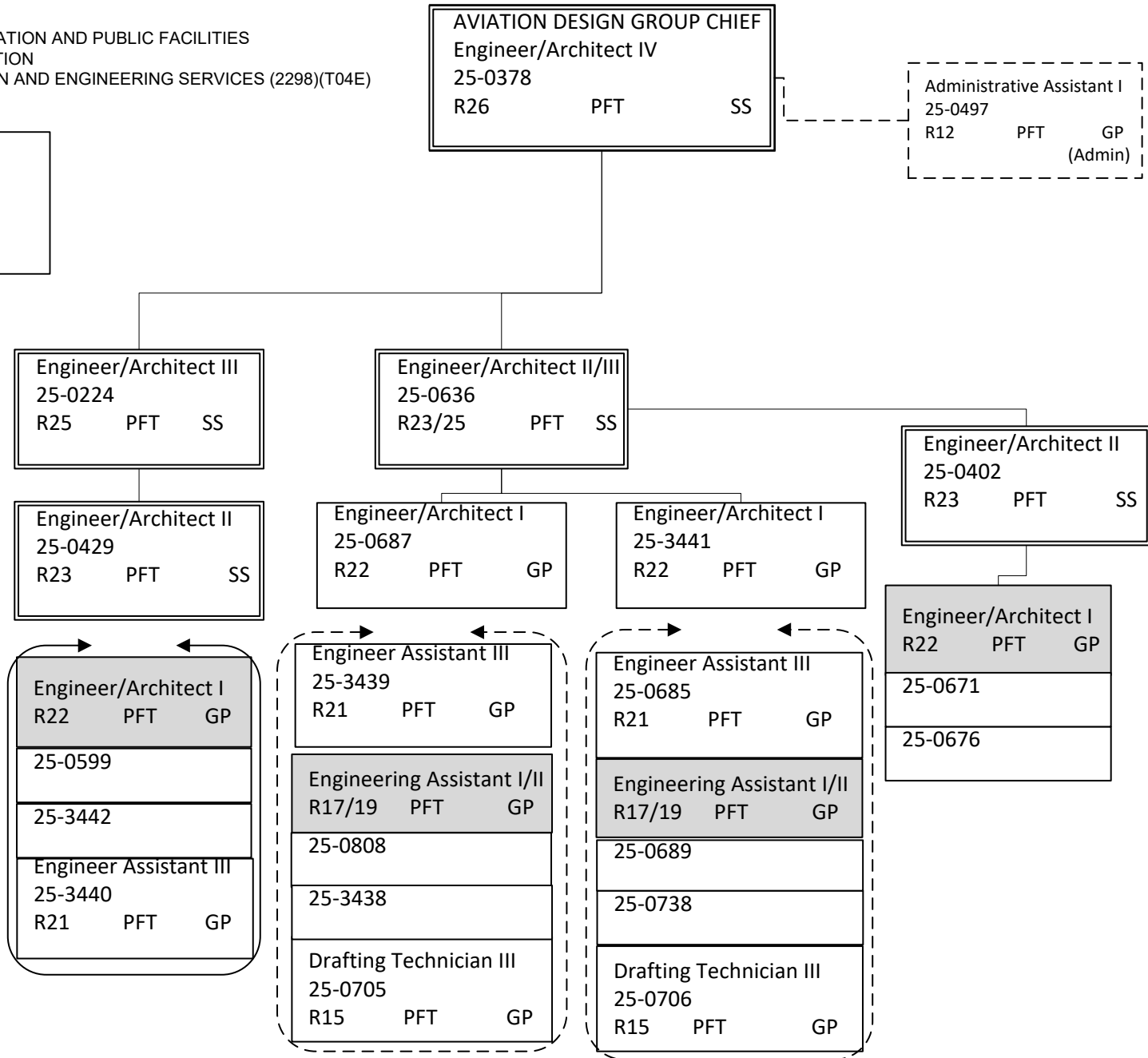
<b>PCN Funding Sources:</b>	<b>Pre-Vacancy</b>	<b>Post-Vacancy</b>	<b>Percent</b>
1004 General Fund Receipts	11,397	10,600	0.05%
1005 General Fund/Program Receipts	469,965	437,090	1.89%
1007 Interagency Receipts	41,074	38,200	0.16%
1039 U/A Indirect Cost Recovery	4,788,947	4,453,948	19.21%
1061 Capital Improvement Project Receipts	19,615,194	18,243,061	78.69%
<b>Total PCN Funding:</b>	<b>24,926,577</b>	<b>23,182,900</b>	<b>100.00%</b>

Note: If a position is split, an asterisk (\*) will appear in the Split/Count column. If the split position is also counted in the component, two asterisks (\*\*) will appear in this column. [No valid job title] appearing in the Job Class Title indicates that the PCN has an invalid class code or invalid range for the class code effective date of this scenario.



DEPARTMENT OF TRANSPORTATION AND PUBLIC FACILITIES  
 RDU: DESIGN AND CONSTRUCTION  
 COMPONENT: CENTRAL DESIGN AND ENGINEERING SERVICES (2298)(T04E)  
 FY2021 GOVERNOR'S BUDGET

AVIATION DESIGN TOTAL:  
 FULL-TIME POSITIONS: 20  
 PART-TIME POSITIONS: 0  
 TOTAL 20



Note: All positions are located in Anchorage.

DEPARTMENT OF TRANSPORTATION AND PUBLIC FACILITIES  
 RDU: DESIGN AND CONSTRUCTION  
 COMPONENT: CENTRAL DESIGN AND ENGINEERING SERVICES (2298)(T04E)  
 FY2021 GOVERNOR'S BUDGET

HIGHWAY DESIGN TOTAL:	
FULL-TIME POSITIONS:	31
PART-TIME POSITIONS:	0
TOTAL	31

HIGHWAY DESIGN GROUP CHIEF		
Engineer/Architect IV		
25-0389		
R26	PFT	SS

Administrative Assistant I		
25-0497		
R12	PFT	GP
(Admin)		

Engineer/Architect II/III		
25-0404		
R23/25	PFT	SS

Engineer/Architect III		
25-0616		
R25	PFT	SS

Engineer/Architect III		
25-0797		
R25	PFT	SS

Engineer/Architect III		
25-0967		
R25	PFT	SS

Engineer/Architect I		
25-0962		
R22	PFT	GP

Engineer/Architect II		
25-3560		
R23	PFT	GP
Engineer/Architect I		
25-0886		
R22	PFT	GP
Engineering Assistant III		
PK0303		
R21	PFT	GP
25-0598		
25-0665		
Engineering Assistant II		
25-0819		
R19	PFT	GP
Engineering Assistant I/II		
25-0644		
R17/19	PFT	GP

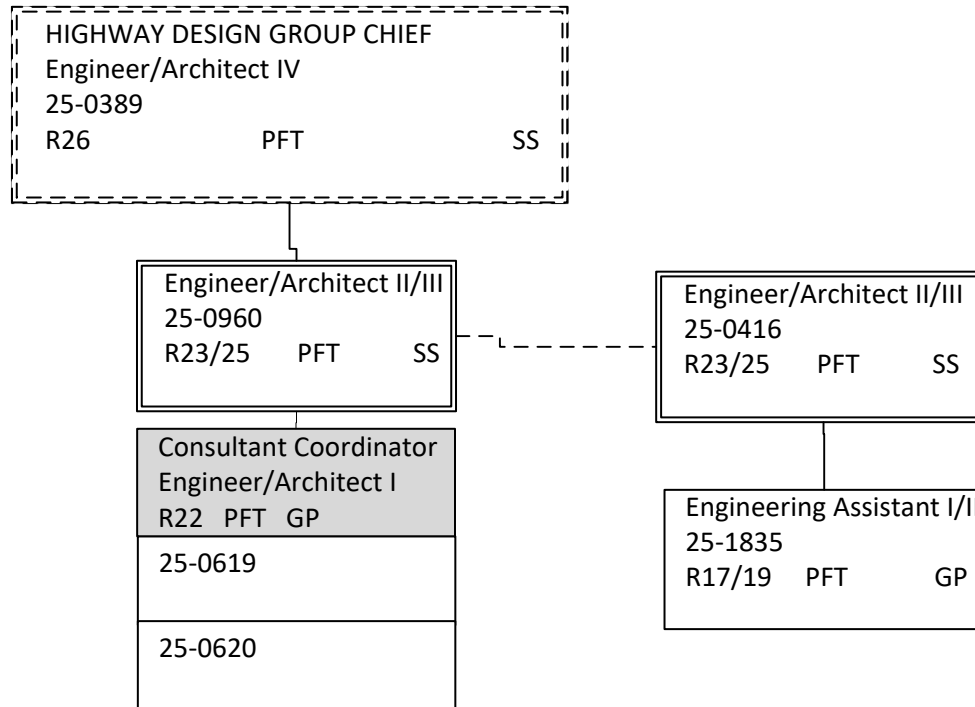
Engineer/Architect II		
25-0617		
R23	PFT	GP
Engineer/Architect I		
25-0675		
R22	PFT	GP
Engineering Assistant III		
R21		
PFT	GP	
25-0515		
25-0640		
Engineering Assistant I/II		
R17/19		
PFT	GP	
25-0646		
25-0802		
Drafting Technician III		
25-0667		
R15	PFT	GP

Engineer/Architect I		
25-0631		
R22	PFT	GP
Engineering Asst. III / Eng Associate / Eng./Arch. I		
25-0820		
R21/22	PFT	GP

Engineering Assistant III	Engineering Assistant I/II
R21	R17/19
PFT	PFT
GP	GP
25-0541	25-0655
25-0683	25-0662
Drafting Technician III	
25-0487	
R15	PFT
GP	

Note: All positions are located in Anchorage.

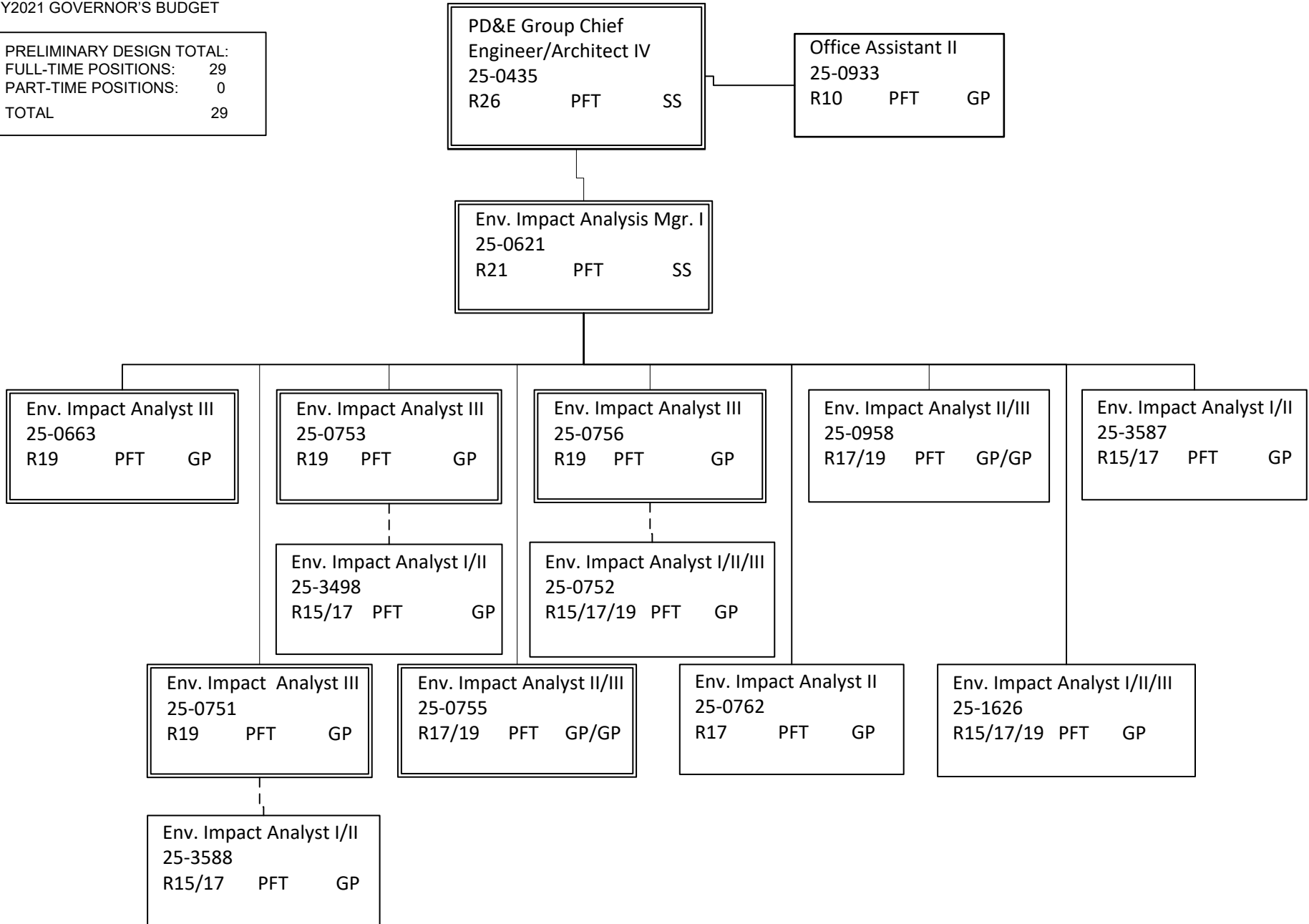
DEPARTMENT OF TRANSPORTATION AND PUBLIC FACILITIES  
 RDU: DESIGN AND CONSTRUCTION  
 COMPONENT: CENTRAL DESIGN AND ENGINEERING SERVICES (2298)(T04E)  
 FY2021 GOVERNOR'S BUDGET



Note: All positions are located in Anchorage.

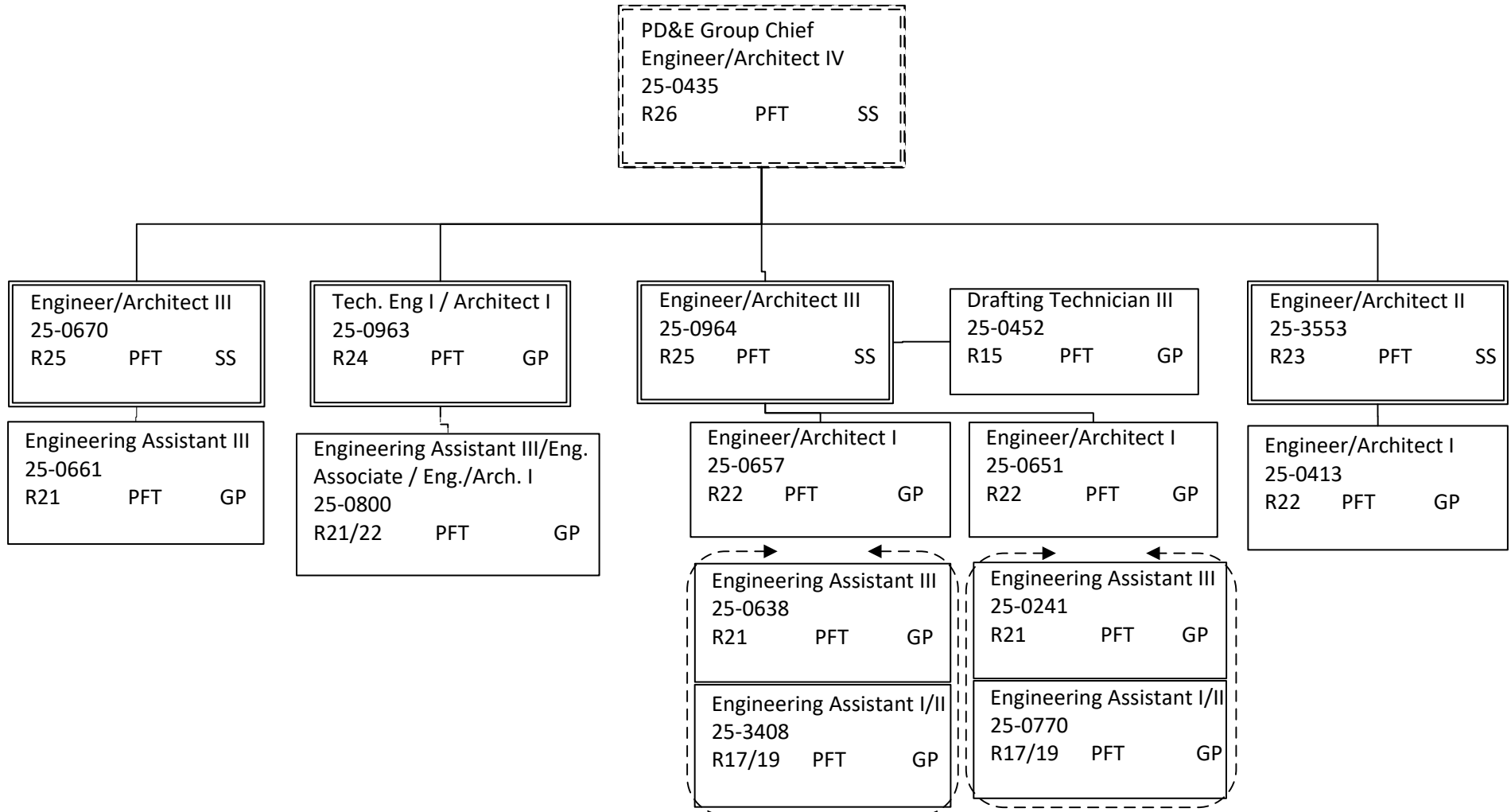
DEPARTMENT OF TRANSPORTATION AND PUBLIC FACILITIES  
 RDU: DESIGN AND CONSTRUCTION  
 COMPONENT: CENTRAL DESIGN AND ENGINEERING SERVICES (2298)(T04E)  
 FY2021 GOVERNOR'S BUDGET

PRELIMINARY DESIGN TOTAL:	
FULL-TIME POSITIONS:	29
PART-TIME POSITIONS:	0
TOTAL	29



Note: All positions are located in Anchorage.

DEPARTMENT OF TRANSPORTATION AND PUBLIC FACILITIES  
 RDU: DESIGN AND CONSTRUCTION  
 COMPONENT: CENTRAL DESIGN AND ENGINEERING SERVICES (2298)(T04E)  
 FY2021 GOVERNOR'S BUDGET

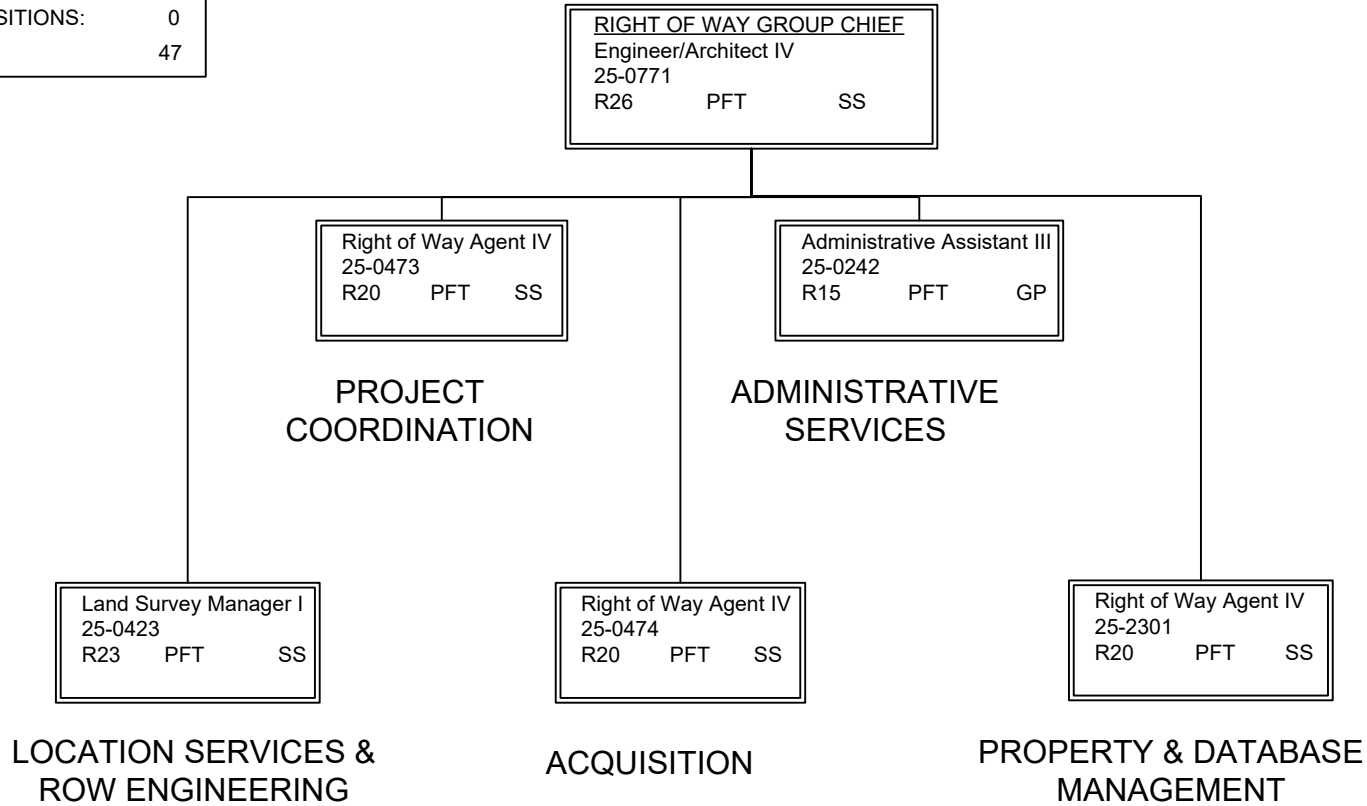


Note: All positions are located in Anchorage.

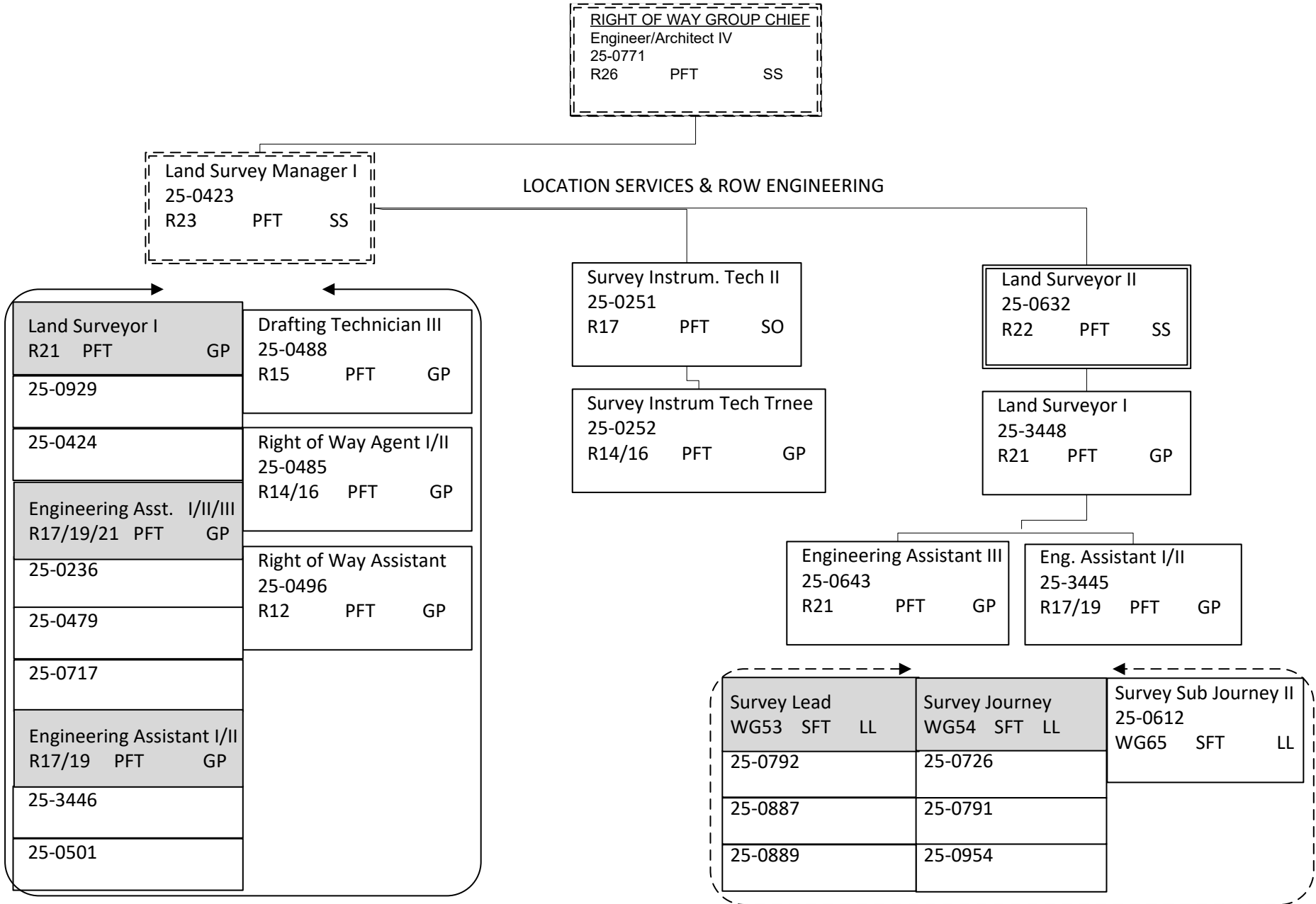


DEPARTMENT OF TRANSPORTATION AND PUBLIC FACILITIES  
 RDU: DESIGN AND CONSTRUCTION  
 COMPONENT: CENTRAL DESIGN AND ENGINEERING SERVICES (2298)(T04E)  
 FY2021 GOVERNOR'S BUDGET

RIGHT OF WAY TOTAL:	
FULL-TIME POSITIONS:	40
SEASONAL FT POSITIONS:	7
NON-PERM POSITIONS:	0
TOTAL	47



Note: All positions are located in Anchorage.



Note: All positions are located in Anchorage.

<b>RIGHT OF WAY GROUP CHIEF</b>		
Engineer/Architect IV		
25-0771		
R26	PFT	SS

PROJECT COORDINATION

ACQUISITION

ADMINISTRATIVE SERVICES

PROPERTY & DATABASE MANAGEMENT

<b>Right of Way Agent IV</b>		
25-0473		
R20	PFT	SS

<b>Right of Way Agent IV</b>		
25-0474		
R20	PFT	SS

<b>Administrative Asst. III</b>		
25-0242		
R15	PFT	GP

<b>Right of Way Agent IV</b>		
25-2301		
R20	PFT	SS

<b>Right of Way Agent III</b>		
R18	PFT	GP
25-0433		
25-0476		
25-0480		
<b>Right of Way Agent II</b>		
R16	PFT	GP
25-0499		
25-0712		
25-3683		

<b>Right of Way Agent III</b>		
R18	PFT	GP
25-0421		
25-0477		
<b>Right of Way Agent II/III</b>		
R16/18	PFT	GP
25-0486		
25-0695		
<b>Right of Way Agent I/II</b>		
25-0719	R14/16	PFT GP
<b>Right of Way Agent I</b>		
25-0561	R14	PFT GP

<b>Right of Way Agent III</b>		
25-3447		
R18	PFT	GP

<b>Right of Way Agent II</b>		
R16	PFT	GP
25-0482		
25-3684		
<b>Right of Way Agent I/II</b>		
R14/16	PFT	GP
25-0427		
25-0715		
<b>Right of Way Assistant</b>		
25-0492		
R12	PFT	GP

DEPARTMENT OF TRANSPORTATION AND PUBLIC FACILITIES  
 RDU: DESIGN AND CONSTRUCTION  
 COMPONENT: CENTRAL DESIGN AND ENGINEERING SERVICES (2298)(T04E)  
 FY2021 GOVERNOR'S BUDGET

TRAFFIC, SAFETY, & UTILITIES TOTAL:	
FULL-TIME POSITIONS:	28
PART-TIME POSITIONS:	0
TOTAL	28

Traffic, Safety, & Utilities Group Chief  
 Engineer/Architect IV  
 25-0414  
 R26 PFT SS

Administrative Asst. I  
 25-0401  
 R12 PFT GP

UTILITY PERMITTING/UTILITY ACCOMODATION & RELOCATION      TRAFFIC SAFETY      TRAFFIC DESIGN

Engineer/Architect III  
 25-0623  
 R25 PFT SS

PSA Coordinator  
 Engineering Assistant III  
 25-1431  
 R21 PFT GP

Technical Engineer I/Architect I  
 25-0627  
 R24 PFT SS

Engineer/Architect II  
 25-0672  
 R23 PFT SS

Engineering Assistant III  
 25-0649  
 R21 PFT GP

EA III/ Eng. Assoc. / Eng./Arch. I  
 R21/22 PFT GP  
 25-0407  
 25-0652

Technical Engineer I/  
 Architect I  
 25-0927  
 R24 PFT GP  
 Eng. Asst.III/Eng. Assoc./  
 Eng./Arch. I  
 25-0656  
 R21/22 PFT GP/GP  
 Engineer/Architect I  
 25-3736  
 R22 PFT GP  
 Engineering Assistant III  
 25-3443  
 R21 PFT GP  
 Engineering Assistant I/II  
 25-0659  
 R17/19 PFT GP

Engineer/Architect I  
 25-3559  
 R22 PFT GP  
 Engineering Assistant III  
 R21 PFT GP  
 25-0628  
 25-0629  
 Engineering Asst. I/II/III  
 R17/19/21 PFT GP  
 25-0626  
 25-0821  
 Drafting Technician III  
 25-0702  
 R15 PFT GP

Engineering Assistant III  
 25-0648  
 R21 PFT GP  
 Engineering Asst II/III  
 R19/21 PFT GP  
 25-0635  
 25-0810  
 25-0634  
 Engineering Assistant I/II  
 R17/19 PFT GP  
 25-0475  
 25-0531  
 25-0805  
 25-3444

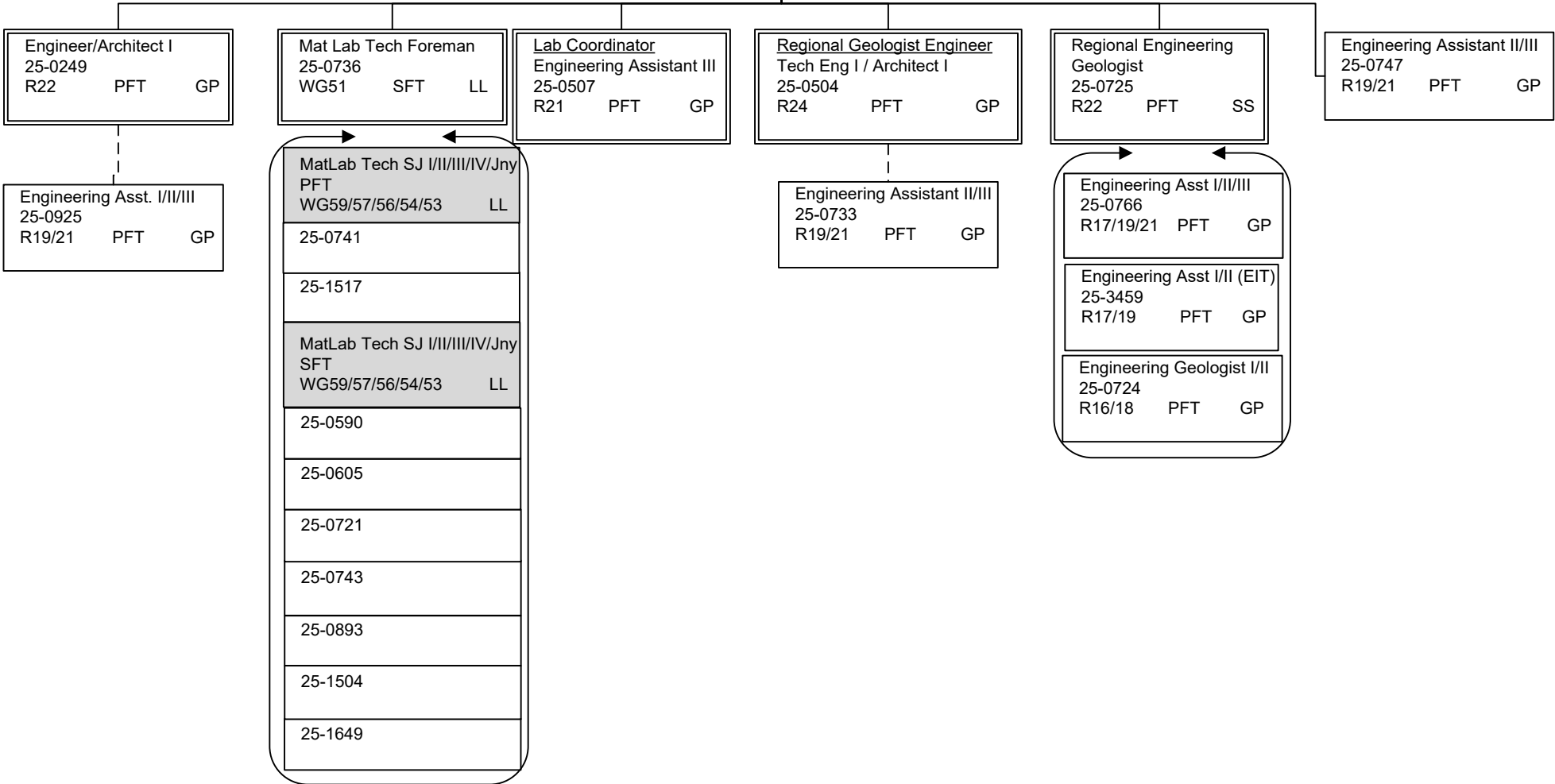
Note: All positions are located in Anchorage.

DEPARTMENT OF TRANSPORTATION AND PUBLIC FACILITIES  
 RDU: DESIGN AND CONSTRUCTION  
 COMPONENT: CENTRAL DESIGN AND ENGINEERING SERVICES (2298)(T04E)  
 FY2021 GOVERNOR'S BUDGET

**MATERIALS GROUP CHIEF**  
 Engineer/Architect IV  
 25-0387  
 R26 PFT SS

Office Assistant II  
 25-0495  
 R10 PFT GP

MATERIALS TOTAL:  
 FULL-TIME POSITIONS: 14  
 SEASONAL FT POSITIONS: 8  
 TOTAL 22



Note: All positions are located in Anchorage.

DEPARTMENT OF TRANSPORTATION AND PUBLIC FACILITIES  
 RDU: DESIGN AND CONSTRUCTION  
 COMPONENT: CENTRAL DESIGN AND ENGINEERING SERVICES (2298)(T04E)  
 FY2021 GOVERNOR'S BUDGET

YEAR ROUND COLLEGE INTERNS

NON-PERM TOTAL:	
FULL-TIME POSITIONS:	0
PART-TIME POSITIONS:	0
NON-PERM POSITIONS:	6
TOTAL	6

College Intern I/II (FLEX) 25IN1215 R8/9 EE
---

College Intern I/II/III/IV (FLEX) R8/9/10/12 EE	
25IN1436	25IN1441
25IN1437	25IN1503
25IN1438	

Note: All positions are located in Anchorage.