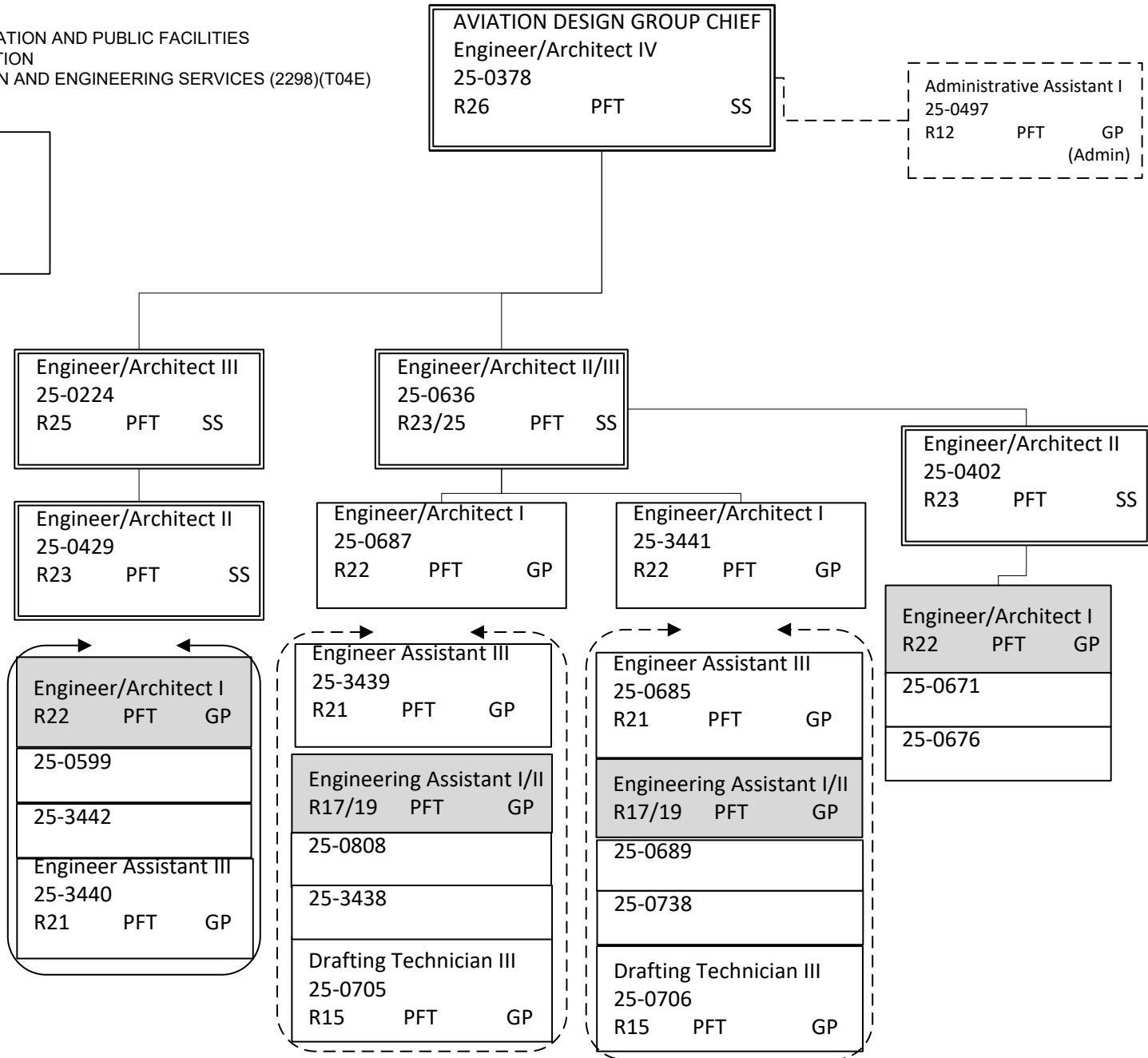


DEPARTMENT OF TRANSPORTATION AND PUBLIC FACILITIES  
 RDU: DESIGN AND CONSTRUCTION  
 COMPONENT: CENTRAL DESIGN AND ENGINEERING SERVICES (2298)(T04E)  
 FY2021 GOVERNOR'S BUDGET

AVIATION DESIGN TOTAL:  
 FULL-TIME POSITIONS: 20  
 PART-TIME POSITIONS: 0  
 TOTAL 20



Note: All positions are located in Anchorage.

DEPARTMENT OF TRANSPORTATION AND PUBLIC FACILITIES  
 RDU: DESIGN AND CONSTRUCTION  
 COMPONENT: CENTRAL DESIGN AND ENGINEERING SERVICES (2298)(T04E)  
 FY2021 GOVERNOR'S BUDGET

HIGHWAY DESIGN TOTAL:	
FULL-TIME POSITIONS:	31
PART-TIME POSITIONS:	0
TOTAL	31

HIGHWAY DESIGN GROUP CHIEF		
Engineer/Architect IV		
25-0389		
R26	PFT	SS

Administrative Assistant I		
25-0497		
R12	PFT	GP
(Admin)		

Engineer/Architect II/III		
25-0404		
R23/25	PFT	SS

Engineer/Architect III		
25-0616		
R25	PFT	SS

Engineer/Architect III		
25-0797		
R25	PFT	SS

Engineer/Architect III		
25-0967		
R25	PFT	SS

Engineer/Architect I		
25-0962		
R22	PFT	GP

Engineer/Architect II		
25-3560		
R23	PFT	GP
Engineer/Architect I		
25-0886		
R22	PFT	GP
Engineering Assistant III		
PK0303		
R21	PFT	GP
25-0598		
25-0665		
Engineering Assistant II		
25-0819		
R19	PFT	GP
Engineering Assistant I/II		
25-0644		
R17/19	PFT	GP

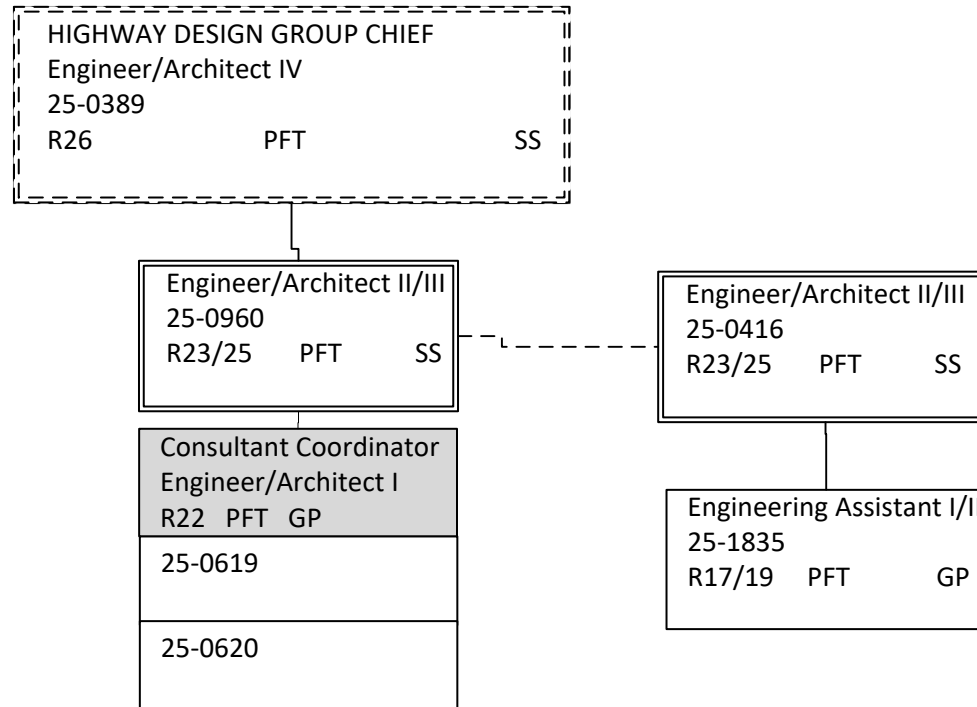
Engineer/Architect II		
25-0617		
R23	PFT	GP
Engineer/Architect I		
25-0675		
R22	PFT	GP
Engineering Assistant III		
R21		
PFT	GP	
25-0515		
25-0640		
Engineering Assistant I/II		
R17/19		
PFT	GP	
25-0646		
25-0802		
Drafting Technician III		
25-0667		
R15	PFT	GP

Engineer/Architect I		
25-0631		
R22	PFT	GP
Engineering Asst. III / Eng Associate / Eng./Arch. I		
25-0820		
R21/22	PFT	GP

Engineering Assistant III	Engineering Assistant I/II
R21	R17/19
PFT	PFT
GP	GP
25-0541	25-0655
25-0683	25-0662
Drafting Technician III	
25-0487	
R15	PFT
GP	

Note: All positions are located in Anchorage.

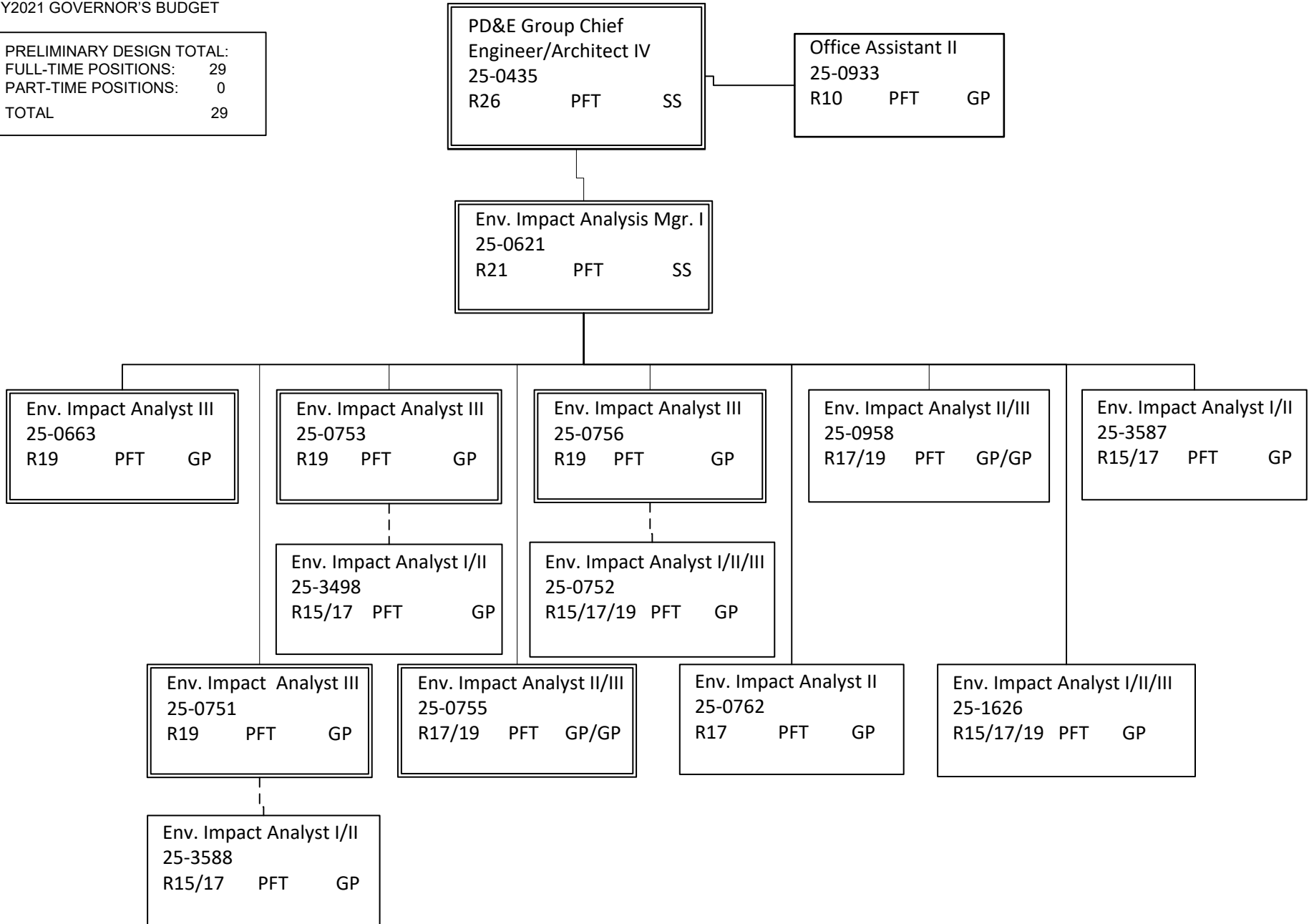
DEPARTMENT OF TRANSPORTATION AND PUBLIC FACILITIES  
RDU: DESIGN AND CONSTRUCTION  
COMPONENT: CENTRAL DESIGN AND ENGINEERING SERVICES (2298)(T04E)  
FY2021 GOVERNOR'S BUDGET



Note: All positions are located in Anchorage.

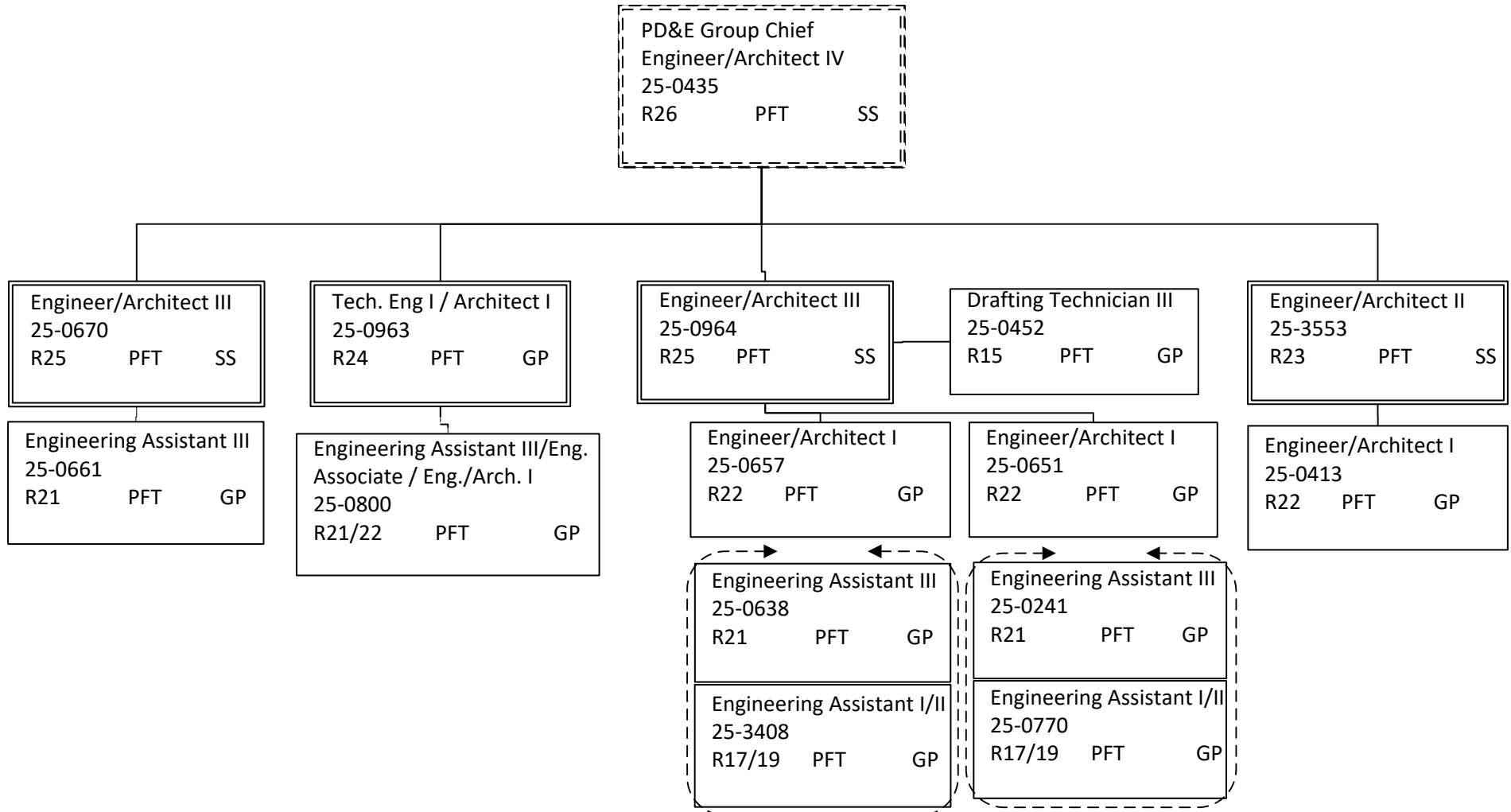
DEPARTMENT OF TRANSPORTATION AND PUBLIC FACILITIES  
 RDU: DESIGN AND CONSTRUCTION  
 COMPONENT: CENTRAL DESIGN AND ENGINEERING SERVICES (2298)(T04E)  
 FY2021 GOVERNOR'S BUDGET

PRELIMINARY DESIGN TOTAL:	
FULL-TIME POSITIONS:	29
PART-TIME POSITIONS:	0
TOTAL	29



Note: All positions are located in Anchorage.

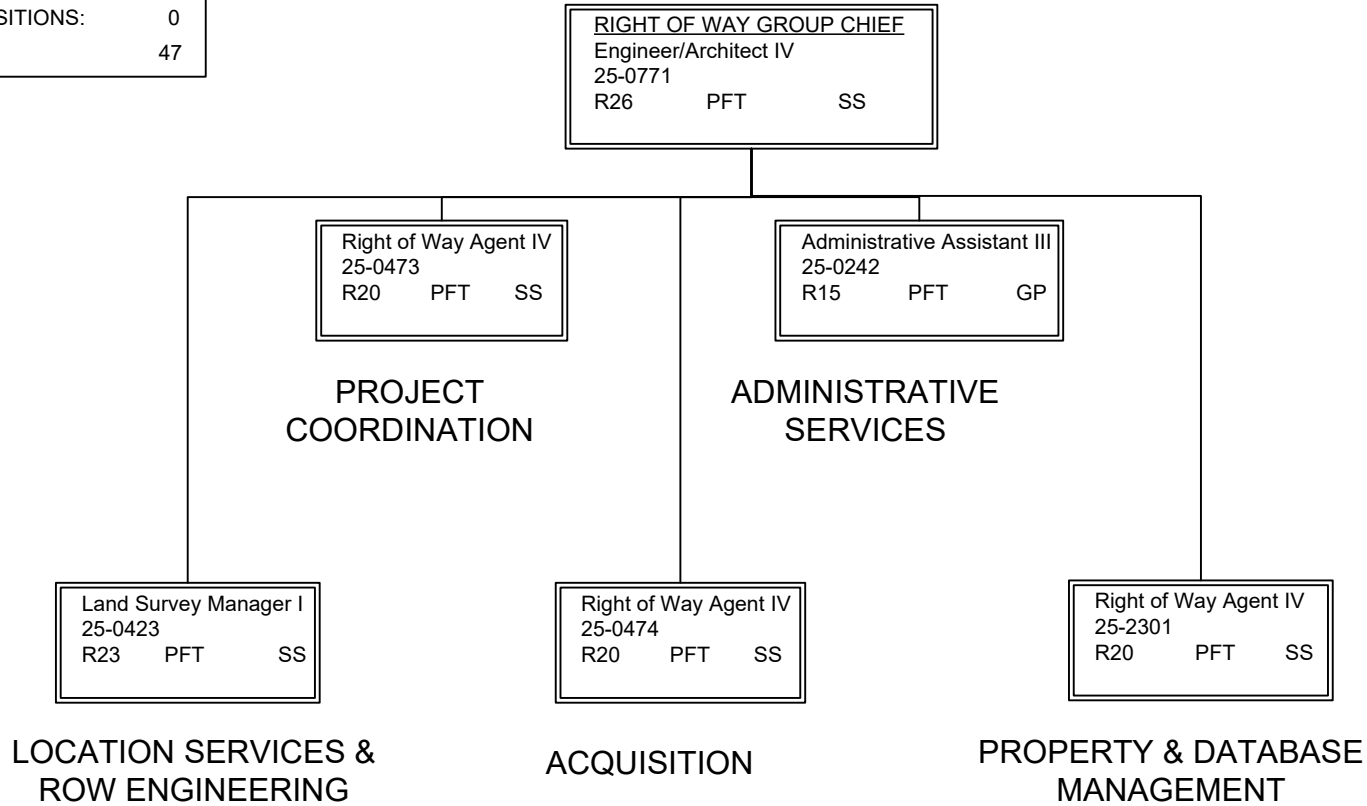
DEPARTMENT OF TRANSPORTATION AND PUBLIC FACILITIES  
 RDU: DESIGN AND CONSTRUCTION  
 COMPONENT: CENTRAL DESIGN AND ENGINEERING SERVICES (2298)(T04E)  
 FY2021 GOVERNOR'S BUDGET



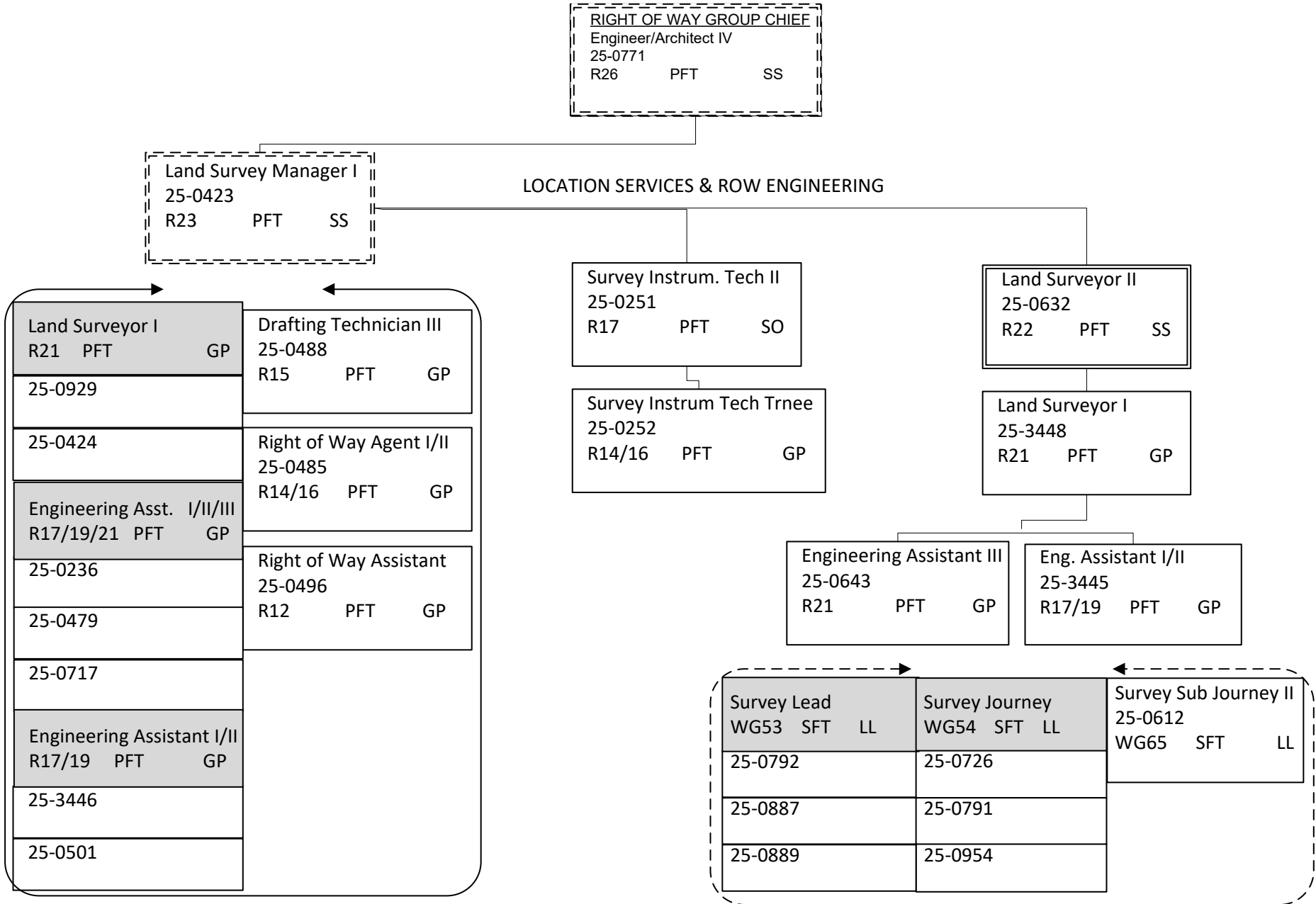
Note: All positions are located in Anchorage.

DEPARTMENT OF TRANSPORTATION AND PUBLIC FACILITIES  
 RDU: DESIGN AND CONSTRUCTION  
 COMPONENT: CENTRAL DESIGN AND ENGINEERING SERVICES (2298)(T04E)  
 FY2021 GOVERNOR'S BUDGET

RIGHT OF WAY TOTAL:	
FULL-TIME POSITIONS:	40
SEASONAL FT POSITIONS:	7
NON-PERM POSITIONS:	0
TOTAL	47



Note: All positions are located in Anchorage.



Note: All positions are located in Anchorage.



<b>RIGHT OF WAY GROUP CHIEF</b>		
Engineer/Architect IV		
25-0771		
R26	PFT	SS

PROJECT COORDINATION

ACQUISITION

ADMINISTRATIVE SERVICES

PROPERTY & DATABASE MANAGEMENT

<b>Right of Way Agent IV</b>		
25-0473		
R20	PFT	SS

<b>Right of Way Agent IV</b>		
25-0474		
R20	PFT	SS

<b>Administrative Asst. III</b>		
25-0242		
R15	PFT	GP

<b>Right of Way Agent IV</b>		
25-2301		
R20	PFT	SS

<b>Right of Way Agent III</b>		
R18	PFT	GP
25-0433		
25-0476		
25-0480		
<b>Right of Way Agent II</b>		
R16	PFT	GP
25-0499		
25-0712		
25-3683		

<b>Right of Way Agent III</b>		
R18	PFT	GP
25-0421		
25-0477		
<b>Right of Way Agent II/III</b>		
R16/18	PFT	GP
25-0486		
25-0695		
<b>Right of Way Agent I/II</b>		
25-0719	R14/16	PFT GP
<b>Right of Way Agent I</b>		
25-0561	R14	PFT GP

<b>Right of Way Agent III</b>		
25-3447		
R18	PFT	GP

<b>Right of Way Agent II</b>		
R16	PFT	GP
25-0482		
25-3684		
<b>Right of Way Agent I/II</b>		
R14/16	PFT	GP
25-0427		
25-0715		
<b>Right of Way Assistant</b>		
25-0492		
R12	PFT	GP

Note: All positions are located in Anchorage.

DEPARTMENT OF TRANSPORTATION AND PUBLIC FACILITIES  
 RDU: DESIGN AND CONSTRUCTION  
 COMPONENT: CENTRAL DESIGN AND ENGINEERING SERVICES (2298)(T04E)  
 FY2021 GOVERNOR'S BUDGET

TRAFFIC, SAFETY, & UTILITIES TOTAL:	
FULL-TIME POSITIONS:	28
PART-TIME POSITIONS:	0
TOTAL	28

Traffic, Safety, & Utilities Group Chief Engineer/Architect IV 25-0414 R26 PFT SS		
--	--	--

Administrative Asst. I 25-0401 R12 PFT GP		
---	--	--

UTILITY PERMITTING/UTILITY ACCOMODATION & RELOCATION      TRAFFIC SAFETY      TRAFFIC DESIGN

Engineer/Architect III 25-0623 R25 PFT SS		
---	--	--

PSA Coordinator Engineering Assistant III 25-1431 R21 PFT GP		
---	--	--

Technical Engineer I/Architect I 25-0627 R24 PFT SS		
---	--	--

Engineer/Architect II 25-0672 R23 PFT SS		
--	--	--

Engineering Assistant III 25-0649 R21 PFT GP		
--	--	--

EA III/ Eng. Assoc. / Eng./Arch. I R21/22 PFT GP		
25-0407		
25-0652		

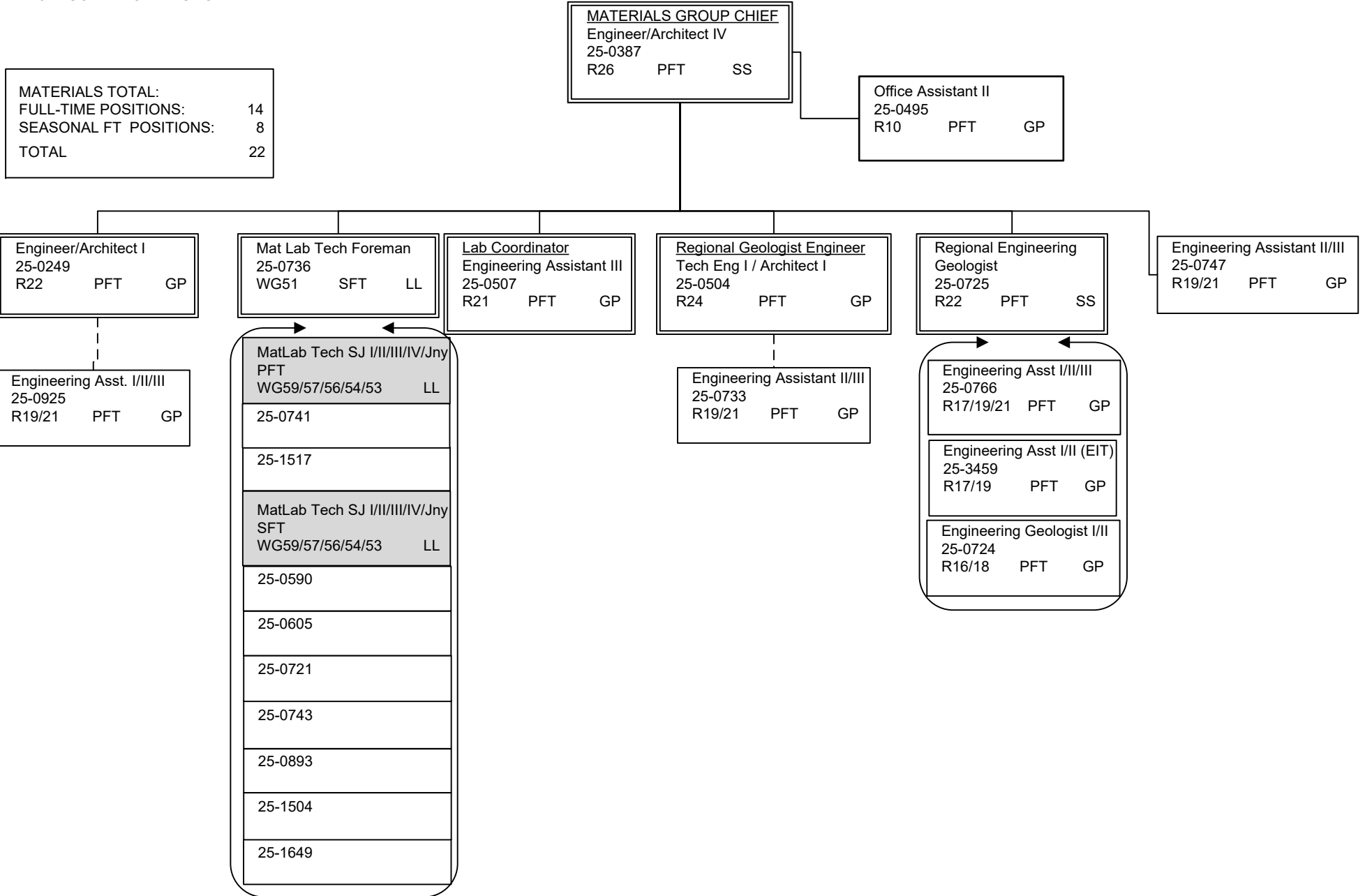
Technical Engineer I/ Architect I 25-0927 R24 PFT GP		
Eng. Asst.III/Eng. Assoc./ Eng./Arch. I 25-0656 R21/22 PFT GP/GP		
Engineer/Architect I 25-3736 R22 PFT GP		
Engineering Assistant III 25-3443 R21 PFT GP		
Engineering Assistant I/II 25-0659 R17/19 PFT GP		

Engineer/Architect I 25-3559 R22 PFT GP		
Engineering Assistant III R21 PFT GP		
25-0628		
25-0629		
Engineering Asst. I/II/III R17/19/21 PFT GP		
25-0626		
25-0821		
Drafting Technician III 25-0702 R15 PFT GP		

Engineering Assistant III 25-0648 R21 PFT GP		
Engineering Asst II/III R19/21 PFT GP	Engineering Assistant I/II R17/19 PFT GP	
25-0635	25-0475	
25-0810	25-0531	
25-0634	25-0805	
	25-3444	

Note: All positions are located in Anchorage.

DEPARTMENT OF TRANSPORTATION AND PUBLIC FACILITIES  
 RDU: DESIGN AND CONSTRUCTION  
 COMPONENT: CENTRAL DESIGN AND ENGINEERING SERVICES (2298)(T04E)  
 FY2021 GOVERNOR'S BUDGET



Note: All positions are located in Anchorage.

DEPARTMENT OF TRANSPORTATION AND PUBLIC FACILITIES  
 RDU: DESIGN AND CONSTRUCTION  
 COMPONENT: CENTRAL DESIGN AND ENGINEERING SERVICES (2298)(T04E)  
 FY2021 GOVERNOR'S BUDGET

YEAR ROUND COLLEGE INTERNS

NON-PERM TOTAL:	
FULL-TIME POSITIONS:	0
PART-TIME POSITIONS:	0
NON-PERM POSITIONS:	6
TOTAL	6

College Intern I/II (FLEX) 25IN1215 R8/9 EE
---

College Intern I/II/III/IV (FLEX) R8/9/10/12 EE	
25IN1436	25IN1441
25IN1437	25IN1503
25IN1438	

Note: All positions are located in Anchorage.