

State of Alaska FY2021 Governor's Operating Budget

Department of Transportation/Public Facilities Northern Design and Engineering Services Component Budget Summary

Component: Northern Design and Engineering Services

Contribution to Department's Mission

Develop, design and advertise projects that improve Alaska's transportation and public facilities infrastructure. The division also provides a wide range of technical services to the department, other state and federal agencies, local governments, and the public.

Core Services

- Develop capital improvement (CIP) projects from the planning stage to final preparation of plans, specifications, and estimates for construction advertising including survey, preliminary design, environmental, traffic and safety, materials, right-of-way, utilities, and design elements.
- Provide technical assistance during construction.
- Ensure environmental compliance services during construction and maintenance and operations of facilities.
- Complete and maintain airport master plans, airport layout plans and airport certification documents.
- Provide design input for airport leasing actions.
- Complete traffic studies and accident analysis.
- Conduct hydrological studies, materials testing, and surveying.
- Process utility, right-of-way and traffic permits.
- Acquire and vacate right-of-way as required to support the department's mission.
- Conduct active public involvement and issue resolution efforts throughout the project development process.
- Develop CIP project bid packages through formal advertisement and contract award.
- Coordinate, solicit, select, prepare, and administer professional services agreements.
- Manage the state's right-of-way per regulations and statutes.

Major Component Accomplishments in 2019

Delivered a comprehensive program of bid-ready designs and contract documents for highway and airport projects, which are 90% federally funded.

- Highway projects delivered: Kivalina Evacuation and School Site Access Road project, Tok Cutoff Mile Post (MP) 38-50 Rehabilitation, Richardson Highway MP 51-65 Resurfacing, and Eyak Lake Road armoring in Cordova. In Fairbanks, major projects delivered included: Parks Highway MP 356-362 Resurfacing (Mitchell Expressway) Gillam Way Rehabilitation, Badger Road Two Way Left Turn Lane, Richardson Highway MP 353-357 Access Improvements continuation of University Avenue/Geist Road intersection upgrades. Improvements to technology and coordination in traffic signal systems throughout the Fairbanks area will continue into 2020.
- Airport projects delivered: Erosion control at Kivalina Airport, New Airport Rescue and Firefighting Building in Utqiaqvik (formerly Barrow) and runway rehabilitation in Kotlik.
- Pedestrian Improvement projects delivered: Fairbanks Area Surface Transportation Sidewalk Improvements (Johansen Expressway Bicycle/Pedestrian Path Resurfacing, and Selawik Footbridge Rehabilitation).
- Reduced number of supervisors by increasing managers' span of control. Sharing resources across sections to account for workload variations.
- Integrated all design and construction staff into team structures to provide services across organizational boundaries/budget components and work cross-functionally to deliver products and focused priorities.
- Supported November 30, 2018 Alaska earthquake response.

Key Component Challenges

- Recruiting and retaining staff with minimal training resources makes it difficult to replace institutional knowledge lost from staff retirements and other separations from state service.
- High volume of anticipated urban projects to be delivered for the 2020 construction season
 - 80 permanent parcels and an additional 90 temporary parcels must be acquired to construct planned

- projects.
- To accommodate changes in electrical, water, sewer, and communications services, over 40 utility agreements will be required.
- Communicating and coordinating with contractors, project stakeholders and the public regarding construction season traffic impacts.
- Establishing effective guidelines for life cycle cost analysis for infrastructure design in Arctic conditions.
- Managing project delivery schedules with continual changes in federal funding programs and lack of state funding.
- Securing funding through the Tribal Transportation Program, Federal Highway Administration grants, and local government match funds to supplement existing projects.
- Supporting the Metropolitan Planning Organization (MPO) and municipalities in increasing project needs and a limited MPO budget, and the prospect of sanctions on federal transportation funding due to non-compliance with PM 2.5 air quality standards.
- Increasing employee proficiency and their ability to function efficiently while fully leveraging statewide accounting and procurement systems.

Significant Changes in Results to be Delivered in FY2021

- Project construction year forecasting based on continuous monitoring of project schedules and funding programs.
- Improved communications, reduced paperwork and increased efficiencies through leveraging technologies such as GIS, virtual reality, and augmented reality (State Transportation Innovation Council grants).
- Continued use of project data management and electronic bidding through AASHTOWare and further reductions in paper and postage for printing of contract and internal documents.
- Improved traffic operations communication and agency coordination with full implementation of Traffic Operations Center.
- Improved contract reviews.

Statutory and Regulatory Authority

AS 02.15, Alaska Aeronautics Act of 1949

AS 08.48, Architects, Engineers, Land Surveyors, and Landscape Architects

AS 08.87, Real Estate Appraisers

AS 19, Highways and Ferries

AS 29.60, Municipal Government State Programs

AS 30.30, Navigation, Harbors, Shipping, and Transportation Facilities, Abandoned and Derelict Vessels

AS 34.60, Property, Relocation Assistance and Real Property Acquisition Practices

AS 35, Public Buildings, Works, and Improvements

AS 36, Public Contracts

AS 44.42, State Government, DOT&PF

AS 44.62, State Government, Administrative Procedure Act

17 AAC 15 Transportation and Public Facilities

CFR 14 Aeronautics

CFR 15 Environment

CFR 16 Environment

CFR 23 Highways

CFR 33 Environment

CFR 41 Contracts

CFR 42 Environment/ADA

CFR 43 Lands

CFR 49 Transportation

Contact Information

Contact: Sarah Schacher, P.E., Preconstruction Engineer
Phone: (907) 451-5129
E-mail: sarah.schacher@alaska.gov

Northern Design and Engineering Services Personal Services Information				
Authorized Positions			Personal Services Costs	
	FY2020 Management Plan	FY2021 Governor		
Full-time	109	109	Annual Salaries	10,513,860
Part-time	12	12	COLA	102,599
Nonpermanent	2	2	Premium Pay	698,034
			Annual Benefits	6,358,940
			<i>Less 3.45% Vacancy Factor</i>	<i>(610,033)</i>
			Lump Sum Premium Pay	0
Totals	123	123	Total Personal Services	17,063,400

Position Classification Summary					
Job Class Title	Anchorage	Fairbanks	Juneau	Others	Total
Administrative Assistant I	0	3	0	0	3
Administrative Assistant II	0	1	0	0	1
College Intern II	0	1	0	0	1
College Intern III	0	1	0	0	1
Drafting Technician III	0	4	0	0	4
Driller, Journey	0	2	0	0	2
Driller, Sub-Journey	0	2	0	0	2
Eia Mgr I	0	1	0	0	1
Engineer/Architect I	0	12	0	0	12
Engineer/Architect II	0	5	0	0	5
Engineer/Architect III	0	9	0	0	9
Engineer/Architect IV	0	3	0	0	3
Engineer/Architect V	0	1	0	0	1
Engineering Assistant I	0	1	0	0	1
Engineering Assistant II	0	8	0	0	8
Engineering Assistant III	0	17	0	0	17
Engineering Associate	0	3	0	0	3
Engineering Geologist II	0	3	0	0	3
Env Imp Any II	0	3	0	0	3
Env Imp Any III	0	7	0	0	7
Land Survey Manager I	0	1	0	0	1
Land Surveyor I	0	2	0	0	2
Land Surveyor II	0	1	0	0	1
Mtlb Subjrny II	0	3	0	0	3
Office Assistant II	0	2	0	0	2
Procurement Specialist I	0	1	0	0	1
Procurement Specialist II	0	1	0	0	1
Regional Engineering Geologist	0	1	0	0	1
Right-Of-Way Agent II	0	3	0	0	3
Right-Of-Way Agent III	0	8	0	0	8
Right-Of-Way Agent IV	0	2	0	0	2
Right-Of-Way Assistant	0	1	0	0	1
Survey Lead	0	2	0	0	2
Survey, Journey	0	2	0	0	2
Survey, Sub-Journey II	0	2	0	0	2
Tech Eng/Arch I	0	4	0	0	4

Position Classification Summary

Job Class Title	Anchorage	Fairbanks	Juneau	Others	Total
Totals	0	123	0	0	123

Component Detail All Funds
Department of Transportation/Public Facilities

Component: Northern Design and Engineering Services (2299)
RDU: Design, Engineering and Construction (526)

Non-Formula Component

	FY2019 Actuals	FY2020 Conference Committee	FY2020 Authorized	FY2020 Management Plan	FY2021 Governor	FY2020 Management Plan vs FY2021 Governor	
71000 Personal Services	15,268.4	17,012.8	17,012.8	16,880.9	17,063.4	182.5	1.1%
72000 Travel	9.3	26.0	8.7	8.7	8.7	0.0	0.0%
73000 Services	572.0	482.6	482.6	482.6	482.6	0.0	0.0%
74000 Commodities	176.7	104.2	104.2	104.2	104.2	0.0	0.0%
75000 Capital Outlay	177.5	0.0	0.0	0.0	0.0	0.0	0.0%
77000 Grants, Benefits	0.0	0.0	0.0	0.0	0.0	0.0	0.0%
78000 Miscellaneous	0.0	0.0	0.0	0.0	0.0	0.0	0.0%
Totals	16,203.9	17,625.6	17,608.3	17,476.4	17,658.9	182.5	1.0%
Fund Sources:							
1004 Gen Fund (UGF)	118.4	124.2	124.2	124.2	124.3	0.1	0.1%
1005 GF/Prgm (DGF)	223.0	134.1	134.1	134.1	135.5	1.4	1.0%
1007 I/A Rcpts (Other)	32.8	162.8	162.8	162.8	164.6	1.8	1.1%
1061 CIP Rcpts (Other)	15,808.0	17,175.1	17,157.8	17,025.9	17,204.7	178.8	1.1%
1232 ISPF-I/A (Other)	21.7	29.4	29.4	29.4	29.8	0.4	1.4%
Unrestricted General (UGF)	118.4	124.2	124.2	124.2	124.3	0.1	0.1%
Designated General (DGF)	223.0	134.1	134.1	134.1	135.5	1.4	1.0%
Other Funds	15,862.5	17,367.3	17,350.0	17,218.1	17,399.1	181.0	1.1%
Federal Funds	0.0	0.0	0.0	0.0	0.0	0.0	0.0%
Positions:							
Permanent Full Time	110	111	111	109	109	0	0.0%
Permanent Part Time	13	12	12	12	12	0	0.0%
Non Permanent	2	2	2	2	2	0	0.0%

Change Record Detail - Multiple Scenarios with Descriptions
Department of Transportation/Public Facilities

Component: Northern Design and Engineering Services (2299)
RDU: Design, Engineering and Construction (526)

Scenario/Change Record Title	Trans Type	Totals	Personal Services	Travel	Services	Commodities	Capital Outlay	Grants, Benefits	Miscellaneous	Positions		NP
										PFT	PPT	
***** Changes From FY2020 Conference Committee To FY2020 Authorized *****												
FY2020 Conference Committee												
	ConfCom	17,625.6	17,012.8	26.0	482.6	104.2	0.0	0.0	0.0	111	12	2
1004 Gen Fund		124.2										
1005 GF/Prgm		134.1										
1007 I/A Rcpts		162.8										
1061 CIP Rcpts		17,175.1										
1232 ISPF-I/A		29.4										
Executive Branch 50% Travel Reduction												
	Veto	-17.3	0.0	-17.3	0.0	0.0	0.0	0.0	0.0	0	0	0
1061 CIP Rcpts		-17.3										

State agency travel budgets, not covered under the exemptions of public safety, health, and disaster management, were reduced 50% in the Governor's FY2020 budget. Veto action removes legislative increases to state travel. Agencies will rely on technology and management efficiencies to reduce the amount of state employee travel.

The State's fiscal reality dictates a reduction in expenditures across all agencies.

Subtotal		17,608.3	17,012.8	8.7	482.6	104.2	0.0	0.0	0.0	111	12	2
-----------------	--	-----------------	-----------------	------------	--------------	--------------	------------	------------	------------	------------	-----------	----------

***** Changes From FY2020 Authorized To FY2020 Management Plan *****												
Transfer Positions to Central Design and Engineering Services for Earthquake Recovery												
	Trout	-100.0	-100.0	0.0	0.0	0.0	0.0	0.0	0.0	-2	0	0
1061 CIP Rcpts		-100.0										

Transfer two positions from Northern Region Design and Engineering Services to Central Design and Engineering Services to support the effort to rebuild the transportation infrastructure after the November 2018 Southcentral earthquake.

Positions to transfer (with partial funding, capital improvement project receipt authority):
 Land Survey Spec I (25-1835), range 18, located in Anchorage, was changed to an Engineering Assistant I/II, range 17.
 Land Survey Spec I (25-1626), range 18, located in Anchorage, was changed to an Environmental Impact Analyst I/II/III, range 15.

Transfer to Northern Region Construction and CIP Support to Fund Project Control Staff												
	Trout	-31.9	-31.9	0.0	0.0	0.0	0.0	0.0	0.0	0	0	0
1061 CIP Rcpts		-31.9										

Transfer authority from Northern Region Design and Engineering Services to Northern Construction and CIP to fund a portion of an Accountant III position to meet state and federal requirements. The continued growth, challenges, and complexity of programming funds in the State accounting system and federal program requirements results in needing Project Control to re-distribute duties to provide adequate funding management of capital improvement projects.

The remaining Northern Region Design and Engineering Services is sufficient due to the retirement of long-term employees, replaced at lower level steps, and

Change Record Detail - Multiple Scenarios with Descriptions
Department of Transportation/Public Facilities

Component: Northern Design and Engineering Services (2299)

RDU: Design, Engineering and Construction (526)

Scenario/Change Record Title	Trans Type	Totals	Personal Services	Travel	Services	Commodities	Capital Outlay	Grants, Benefits	Miscellaneous	Positions		NP
										PFT	PPT	
personal services funding source changes.												
Subtotal		17,476.4	16,880.9	8.7	482.6	104.2	0.0	0.0	0.0	109	12	2
***** Changes From FY2020 Management Plan To FY2021 Governor *****												
FY2021 Salary and Health Insurance Increases												
	SalAdj	182.5	182.5	0.0	0.0	0.0	0.0	0.0	0.0	0	0	0
1004 Gen Fund		0.1										
1005 GF/Prgm		1.4										
1007 I/A Rcpts		1.8										
1061 CIP Rcpts		178.8										
1232 ISPF-I/A		0.4										
FY2021 increase to LTC Health Insurance from \$1530 to \$1555 per member per month: \$28.6												
FY2021 GGU Salary Increases: \$113.4												
FY2021 increase to GGU Health Insurance from \$1530 to \$1555 per member per month: \$40.5												
Totals		17,658.9	17,063.4	8.7	482.6	104.2	0.0	0.0	0.0	109	12	2

Line Item Detail (1676)
Department of Transportation/Public Facilities
Travel

Component: Northern Design and Engineering Services (2299)

Line Number	Line Name		FY2019 Actuals	FY2020 Management Plan	FY2021 Governor
2000	Travel		9.3	8.7	8.7
Object Class	Servicing Agency	Explanation	FY2019 Actuals	FY2020 Management Plan	FY2021 Governor
2000 Travel Detail Totals			9.3	8.7	8.7
2000	In-State Employee Travel	Travel and per diem for field travel including project administration, field reviews, permit inspection, surveys, status meetings, training and conferences, Federal Highway Administration workshops, and American Association for State Highway and Transportation Officials (AASHTO) committee meetings within the state. Includes in-state administrative travel for section chiefs and managers. \$2.0 for In state pipeline fund coordination.	5.3	8.7	8.7
2002	Out of State Employee Travel	Out of state travel and per diem for division/section chiefs or other employees. Travel is usually for administrative, conventions, meetings, and training not available in-state.	4.0	0.0	0.0

Line Item Detail (1676)
Department of Transportation/Public Facilities
Services

Component: Northern Design and Engineering Services (2299)

Line Number	Line Name		FY2019 Actuals	FY2020 Management Plan	FY2021 Governor
3000	Services		572.0	482.6	482.6
Object Class	Servicing Agency	Explanation	FY2019 Actuals	FY2020 Management Plan	FY2021 Governor
3000 Services Detail Totals			572.0	482.6	482.6
3000	Education Services	Training and conference fees for training including American Association of State and Highway Transportation Officials (AASHTO) training and other training as required. Includes membership dues, registration fees, and employee tuition (excluding IT).	7.3	15.5	15.5
3001	Financial Services	Insurance/Bonds	0.1	0.0	0.0
3003	Information Technology	All information technology (IT) contractual costs such as software licensing, software maintenance, IT training, IT consulting, and IT equipment leases. Includes annual AutoCAD and Eaglepoint licensing.	60.3	117.4	117.4
3004	Telecommunications	Long distance, local phone service, data communication, and cellular service provided by vendors.	6.1	13.0	13.0
3006	Delivery Services	Delivery services.	27.9	13.0	13.0
3007	Advertising and Promotions	Advertising and legal and public notices for non-project specific and public relations activities.	1.3	3.0	3.0
3008	Utilities	Utilities include water and sewer for the Peger Road materials lab, \$2.5 and McKinley building, \$26.5.	29.0	2.5	2.5
3009	Structure/Infrastructure/Land	Surveys/Appraisals/Inspections/Testing.	43.5	0.0	0.0

Line Item Detail (1676)
Department of Transportation/Public Facilities
Services

Component: Northern Design and Engineering Services (2299)

Object Class	Servicing Agency	Explanation	FY2019 Actuals	FY2020 Management Plan	FY2021 Governor
3000 Services Detail Totals			572.0	482.6	482.6
3010	Equipment/Machinery	Maintenance agreements for copiers and office equipment.	88.5	22.0	22.0
3010	Equipment/Machinery	Rental or lease of production copier for contracts (\$57.0), smaller copiers (\$4.7), and occasional rental of other equipment as needed.	0.0	66.0	66.0
3011	Other Services	Printing to outside vendors and cost per copy charges.	6.7	12.0	12.0
3017	Inter-Agency Information Technology Non-Telecommunications	Admin - Department-wide Computer services provided by Department of Administration Enterprise Technology Services, such as central server, data storage, printing, network services, open connect, and task order system.	148.5	55.1	130.8
3018	Inter-Agency Information Technology Telecommunications	Admin - Department-wide Telecommunications services provided by the Department of Administration, Enterprise Technology Services, such as basic telephone services, equipment and features, dedicated voice/data line service, statewide paging, two-way radio, and video conferencing.	49.5	130.8	55.1
3021	Inter-Agency Mail	Admin - Department-wide Chargeback fees for central mail services such as mailing vendor payments and payroll warrants.	0.7	2.3	2.3
3022	Inter-Agency Human Resources	Admin - Department-wide Chargeback fees for human resource services such as labor relations, position classification and payroll processing.	0.0	3.9	3.9
3024	Inter-Agency Legal	Law - Department-wide Legal services provided by the Department of Law.	43.5	0.0	0.0
3027	Inter-Agency Financial	Admin - Department-wide Chargeback fees for AKPAY/IRIS/ALDER.	50.8	9.1	9.1

Line Item Detail (1676)
Department of Transportation/Public Facilities
Services

Component: Northern Design and Engineering Services (2299)

Object Class		Servicing Agency	Explanation	FY2019 Actuals	FY2020 Management Plan	FY2021 Governor
3000 Services Detail Totals				572.0	482.6	482.6
3028	Inter-Agency Americans with Disabilities Act Compliance	Admin - Department-wide	Chargeback fees for the statewide coordinator for the Americans with Disabilities Act (ADA).	0.9	2.0	2.0
3035	Inter-Agency Other Equipment/Machinery	Trans - Measurement Standards (2332)	Interagency services for collaboration of equipment provided by Central Region Materials Lab.	0.7	0.0	0.0
3037	State Equipment Fleet	Trans - State Equipment Fleet (2791)	State Equipment Fleet (SEF) operating and replacement fees, credit card fuel, and vehicle maintenance and repairs. Budgeted amounts are for vehicle repairs and miscellaneous services only (no overhead vehicles); prior year actuals amount includes the cost of capital improvement project vehicles, which are funded through an unbudgeted Reimbursable Services Agreement. Fleet consists of approximately 38 vehicles or equipment: design staff (25), Drilling/Materials staff (10), and Survey/Right-of-way branch (3).	3.3	15.0	15.0
3039	DOT/PF Time & Equipment System		Vehicle usage billed to the operating budget based on established rates and actual usage of vehicles.	3.4	0.0	0.0

Line Item Detail (1676)
Department of Transportation/Public Facilities
Commodities

Component: Northern Design and Engineering Services (2299)

Line Number	Line Name		FY2019 Actuals	FY2020 Management Plan	FY2021 Governor
4000	Commodities		176.7	104.2	104.2
Object Class	Servicing Agency	Explanation	FY2019 Actuals	FY2020 Management Plan	FY2021 Governor
4000 Commodities Detail Totals			176.7	104.2	104.2
4000	Business	Office and instructional supplies. Includes consumable supplies such as paper, general office supplies, copy machine supplies, photographic supplies, and subscriptions. Also includes non-consumable supplies costing less than \$5,000 such as furniture and office equipment.	118.6	30.0	30.0
4000	Business	Computers, monitors, printers. Computer replacement determined annual by established computer committee. Replace 35-40 computers per year at a cost of \$1,500 each for staff of 160.	0.0	64.2	64.2
4000	Business	Equipment/Furniture/Tools/Vehicles	0.0	5.0	5.0
4003	Scientific and Medical	Laboratory supplies.	4.7	0.0	5.0
4004	Safety	Safety supplies.	3.9	0.0	0.0
4015	Parts and Supplies	Parts and supplies.	13.9	0.0	0.0
4019	Small Tools/Minor Equipment	Geology and Materials cost allocation plan expenses.	35.6	5.0	0.0

Line Item Detail (1676)
Department of Transportation/Public Facilities
Capital Outlay

Component: Northern Design and Engineering Services (2299)

Line Number	Line Name		FY2019 Actuals	FY2020 Management Plan	FY2021 Governor
5000	Capital Outlay		177.5	0.0	0.0
Object Class	Servicing Agency	Explanation	FY2019 Actuals	FY2020 Management Plan	FY2021 Governor
5000 Capital Outlay Detail Totals			177.5	0.0	0.0
5002	Structures and Infrastructure	Department teaming initiative consultant; McKinley building inspection and analysis; and consultant mapping expenses.	64.5	0.0	0.0
5004	Equipment	Geology and Materials Cost allocation plan equipment expenses.	113.0	0.0	0.0

Revenue Detail (1681)
Department of Transportation/Public Facilities

Component: Northern Design and Engineering Services (2299)

Revenue Type (OMB Fund Code) Revenue Source	Component	Comment	FY2019 Actuals	FY2020 Management Plan	FY2021 Governor
5005 GF/Prgm (1005 GF/Prgm)			223.0	134.1	135.5
5101 Program Receipts Public Protection - Licenses and Permits		Receipts from issuing utility permits in the state's right-of-way and for inspections for utility installations.	204.9	109.2	110.6
5113 Program Receipts Natural Resources - Rent and Royalties		Fees collected for plans and specifications in connection with bids and contracts for construction and maintenance projects, per the Department of Transportation and Public Facilities policy and procedure 10.02.030. Receipts also include charges assessed to the owners of illegally placed signs within the State's right-of-way. These signs are removed and stored. When they are identified, they are returned to the owner after the owner has paid the established fee. Receipts are also collected from the Tourist Oriented Destination Signs (TODS) program, per AS 19.05.070-.100.	18.1	14.9	14.9
5120 Program Receipts - Other Revenue		Receipts from the sale and or lease of excess right-of-way.	0.0	10.0	10.0
5007 I/A Rcpts (1007 I/A Rcpts)			32.8	162.8	164.6
5301 Inter-Agency Receipts	Trans - Northern Design & Eng Svcs (2299)	Reimbursement from any state agency's operating budget for services provided. Typical requests are for design studies, environmental consultation, drilling, drafting, and right-of-way surveys. Specific agreements and departments served vary from year to year.	32.8	162.8	164.6

Revenue Detail (1681)
Department of Transportation/Public Facilities

Component: Northern Design and Engineering Services (2299)

Revenue Type (OMB Fund Code) Revenue Source	Component	Comment	FY2019 Actuals	FY2020 Management Plan	FY2021 Governor
5061 CIP Rcpts (1061 CIP Rcpts)			15,808.0	17,025.9	17,204.7
5351 Capital Improvement Project Inter-Agency		Capital improvement project receipts for work in direct support of capital projects.	13,122.7	13,670.5	13,827.0
5351 Capital Improvement Project Inter-Agency		Recovery of indirect costs from the capital budget via the department's Indirect Cost Allocation Plan (ICAP).	2,685.3	3,355.4	3,377.7
5232 ISPF-I/A (1232 ISPF-I/A)			21.7	29.4	29.8
5426 In-State Pipeline Fund IA	Commerce - Department-wide	Provide pipeline regulatory and engineering expertise for In-State Natural Gas Pipeline.	21.7	29.4	29.8
6004 Gen Fund (1004 Gen Fund)			0.1	0.0	0.0
6046 General Fund - Prior Year Reimbursement Recovery		Prior year reimbursement recovery.	0.1	0.0	0.0

Inter-Agency Services (1682)
Department of Transportation/Public Facilities

Component: Northern Design and Engineering Services (2299)

	FY2019 Actuals	FY2020 Management Plan	FY2021 Governor
Component Totals	297.9	218.2	218.2
With Department of Administration	250.4	203.2	203.2
With Department of Law	43.5	0.0	0.0
With Department of Transportation/Public Facilities	4.0	15.0	15.0

Object Class	Servicing Agency	Explanation	FY2019 Actuals	FY2020 Management Plan	FY2021 Governor
3017	Inter-Agency Information Technology Non-Telecommunications	Admin - Department-wide Computer services provided by Department of Administration Enterprise Technology Services, such as central server, data storage, printing, network services, open connect, and task order system.	148.5	55.1	130.8
3018	Inter-Agency Information Technology Telecommunications	Admin - Department-wide Telecommunications services provided by the Department of Administration, Enterprise Technology Services, such as basic telephone services, equipment and features, dedicated voice/data line service, statewide paging, two-way radio, and video conferencing.	49.5	130.8	55.1
3021	Inter-Agency Mail	Admin - Department-wide Chargeback fees for central mail services such as mailing vendor payments and payroll warrants.	0.7	2.3	2.3
3022	Inter-Agency Human Resources	Admin - Department-wide Chargeback fees for human resource services such as labor relations, position classification and payroll processing.	0.0	3.9	3.9
3024	Inter-Agency Legal	Law - Department-wide Legal services provided by the Department of Law.	43.5	0.0	0.0
3027	Inter-Agency Financial	Admin - Department-wide Chargeback fees for AKPAY/IRIS/ALDER.	50.8	9.1	9.1
3028	Inter-Agency Americans with Disabilities Act Compliance	Admin - Department-wide Chargeback fees for the statewide coordinator for the Americans with	0.9	2.0	2.0

Inter-Agency Services (1682)
Department of Transportation/Public Facilities

Component: Northern Design and Engineering Services (2299)

Object Class		Servicing Agency	Explanation	FY2019 Actuals	FY2020 Management Plan	FY2021 Governor
3035	Inter-Agency Other Equipment/Machinery	Trans - Measurement Standards (2332)	Disabilities Act (ADA). Interagency services for collaboration of equipment provided by Central Region Materials Lab.	0.7	0.0	0.0
3037	State Equipment Fleet	Trans - State Equipment Fleet (2791)	State Equipment Fleet (SEF) operating and replacement fees, credit card fuel, and vehicle maintenance and repairs. Budgeted amounts are for vehicle repairs and miscellaneous services only (no overhead vehicles); prior year actuals amount includes the cost of capital improvement project vehicles, which are funded through an unbudgeted Reimbursable Services Agreement. Fleet consists of approximately 38 vehicles or equipment: design staff (25), Drilling/Materials staff (10), and Survey/Right-of-way branch (3).	3.3	15.0	15.0

Personal Services Expenditure Detail
Department of Transportation/Public Facilities

Scenario: FY2021 Governor (16414)
Component: Northern Design and Engineering Services (2299)
RDU: Design, Engineering and Construction (526)

PCN	Job Class Title	Time Status	Retire Code	Barg Unit	Location	Salary Sched	Range / Step	Comp Months	Split / Count	Annual Salaries	COLA	Premium Pay	Annual Benefits	Total Costs	UGF Amount
25-0165	Engineering Assistant III	FT	A	GP	Fairbanks	203	21M / N	12.0		102,571	1,513	7,843	59,688	171,615	0
25-1369	Engineer/Architect V	FT	A	SS	Fairbanks	203	27N	12.0		157,812	0	0	75,996	233,808	24,462
25-1372	Engineer/Architect IV	FT	A	SS	Fairbanks	203	26P	12.0		165,300	0	0	78,310	243,610	0
25-1377	Administrative Assistant I	FT	A	GG	Fairbanks	203	12B / C	12.0		42,502	626	3,205	35,720	82,053	1,641
25-1380	Administrative Assistant I	FT	A	GP	Fairbanks	203	12B / C	12.0		42,207	622	3,205	35,611	81,645	0
25-1381	Procurement Specialist I	FT	A	GP	Fairbanks	203	14L	12.0		62,796	960	7,245	44,734	115,735	0
25-1382	Engineer/Architect II	FT	A	GP	Fairbanks	203	23B / C	12.0		89,853	1,231	0	52,072	143,156	0
25-1388	Right-Of-Way Agent III	FT	A	GP	Fairbanks	203	18F / G	12.0		72,682	996	0	45,712	119,390	0
25-1389	Engineer/Architect III	FT	A	SS	Fairbanks	203	25P	12.0		159,524	0	0	76,525	236,049	0
25-1390	Land Survey Manager I	FT	A	SS	Fairbanks	203	23K / L	12.0		119,119	0	0	62,952	182,071	0
25-1391	Right-Of-Way Agent III	FT	A	GP	Fairbanks	203	18D / E	12.0		68,040	1,003	5,184	45,912	120,139	0
25-1392	Land Surveyor II	FT	A	SS	Fairbanks	2S4	22E / F	12.0		103,144	0	0	57,035	160,179	0
25-1393	Engineer/Architect III	FT	A	SS	Fairbanks	203	25C / D	12.0		114,632	0	0	61,290	175,922	0
25-1394	Engineering Assistant III	FT	A	GP	Fairbanks	203	21C / D	12.0		81,735	1,120	0	49,065	131,920	0
25-1395	Engineering Associate	FT	A	GP	Fairbanks	203	21M	12.0		104,460	1,542	8,035	60,458	174,495	0
25-1396	Engineer/Architect I	FT	A	GP	Fairbanks	203	22M	12.0		111,864	1,533	0	60,225	173,622	0
25-1398	Engineer/Architect IV	FT	A	SS	Fairbanks	203	26O / P	12.0		163,551	0	0	77,770	241,321	39,770
25-1399	Right-Of-Way Agent III	FT	A	GP	Fairbanks	203	18L	12.0		82,680	1,133	0	49,415	133,228	0
25-1400	Right-Of-Way Agent II	FT	A	GP	Fairbanks	203	16G / J	12.0		65,498	966	5,013	44,908	116,385	0
25-1406	Engineering Assistant III	FT	A	GP	Fairbanks	203	21K	12.0		97,980	1,446	7,537	57,874	164,837	0
25-1409	Engineering Assistant III	FT	A	GP	Fairbanks	203	21L	12.0		101,172	1,653	19,455	63,471	185,751	0
25-1414	Right-Of-Way Agent IV	FT	A	SS	Fairbanks	203	20N / O	12.0		109,263	0	0	59,301	168,564	0
25-1415	Right-Of-Way Agent IV	FT	A	SS	Fairbanks	203	20K	12.0		94,884	0	0	53,975	148,859	0
25-1416	Right-Of-Way Agent III	FT	A	GP	Fairbanks	203	18G	12.0		74,496	1,099	5,730	48,506	129,831	0
25-1419	Engineer/Architect IV	FT	A	SS	Fairbanks	203	26K / L	12.0		138,717	0	0	70,094	208,811	0
25-1421	Engineering Assistant III	FT	A	GP	Fairbanks	203	21E / F	12.0		87,120	1,284	6,543	53,483	148,430	0
25-1423	Right-Of-Way Agent II	FT	A	GP	Fairbanks	203	16L / M	12.0		73,019	1,077	5,565	47,898	127,559	0
25-1425	Right-Of-Way Assistant	FT	A	GP	Fairbanks	203	12G	12.0		49,140	725	3,780	38,392	92,037	0
25-1426	Env Imp Any III	FT	A	GP	Fairbanks	203	19B / C	12.0		67,947	1,002	5,184	45,878	120,011	0
25-1432	Engineer/Architect I	FT	A	GP	Fairbanks	203	22F	12.0		94,476	1,295	0	53,784	149,555	0
25-1433	Engineer/Architect II	FT	A	GP	Fairbanks	203	23B / C	12.0		90,461	1,240	0	52,297	143,998	0
25-1435	Engineer/Architect II	FT	A	GP	Fairbanks	203	23E / F	12.0		100,338	1,375	0	55,956	157,669	0
25-1437	Engineer/Architect I	FT	A	GP	Fairbanks	203	22A / B	12.0		81,249	1,113	0	48,885	131,247	0
25-1439	Engineering Assistant III	FT	A	GP	Fairbanks	203	21B / C	12.0		78,470	1,136	4,453	49,505	133,564	0
25-1441	Engineering Assistant III	FT	A	GP	Fairbanks	203	21K / L	12.0		99,310	1,464	7,537	58,366	166,677	0
25-1442	Engineer/Architect I	FT	A	GP	Fairbanks	203	22F / G	12.0		94,606	1,296	0	53,832	149,734	0
25-1444	Engineer/Architect I	FT	A	GP	Fairbanks	203	22B / C	12.0		83,868	1,149	0	49,855	134,872	0
25-1446	Engineer/Architect I	FT	A	GP	Fairbanks	203	22F / G	12.0		94,865	1,300	0	53,928	150,093	0

Note: If a position is split, an asterisk (*) will appear in the Split/Count column. If the split position is also counted in the component, two asterisks (**) will appear in this column. [No valid job title] appearing in the Job Class Title indicates that the PCN has an invalid class code or invalid range for the class code effective date of this scenario.

Personal Services Expenditure Detail
Department of Transportation/Public Facilities

Scenario: FY2021 Governor (16414)
Component: Northern Design and Engineering Services (2299)
RDU: Design, Engineering and Construction (526)

PCN	Job Class Title	Time Status	Retire Code	Barg Unit	Location	Salary Sched	Range / Step	Comp Months	Split / Count	Annual Salaries	COLA	Premium Pay	Annual Benefits	Total Costs	UGF Amount
25-1460	Right-Of-Way Agent III	FT	A	GP	Fairbanks	203	18C / D	12.0		66,276	960	3,759	44,731	115,726	0
25-1491	Driller, Sub-Journey	PT	A	LL	Fairbanks	2EE	54B / C	9.5		42,057	0	20,447	37,945	100,449	0
25-1500	Survey, Journey	PT	A	LL	Fairbanks	2EE	54E / F	9.5		46,289	0	16,392	38,010	100,691	0
25-1527	Engineer/Architect III	FT	A	SS	Fairbanks	203	25J / K	12.0		131,769	0	0	67,638	199,407	0
25-1529	Eia Mgr I	FT	A	SS	Fairbanks	203	21K / L	12.0		102,829	0	0	56,918	159,747	0
25-1530	Engineering Assistant III	FT	A	GP	Fairbanks	203	21M	12.0		104,460	1,542	8,035	60,458	174,495	0
25-1531	Engineer/Architect I	FT	A	GG	Fairbanks	203	22N / O	12.0		116,448	1,596	0	61,923	179,967	0
25-1532	Env Imp Any II	FT	A	GP	Fairbanks	203	17B / C	12.0		58,928	962	11,280	44,795	115,965	0
25-1533	Tech Eng/Arch I	FT	A	GP	Fairbanks	203	24M / N	12.0		125,836	1,724	0	65,400	192,960	0
25-1536	Env Imp Any III	FT	A	GP	Fairbanks	203	19K	12.0		85,572	1,398	16,455	56,581	160,006	0
25-1537	Engineering Assistant III	FT	A	GP	Fairbanks	203	21M	12.0		101,881	1,504	7,843	59,432	170,660	0
25-1538	Engineering Assistant II	FT	A	GP	Fairbanks	203	19B / C	12.0		67,855	1,036	7,776	46,804	123,471	0
25-1540	Engineering Associate	FT	A	GP	Fairbanks	203	21E / F	12.0		86,217	1,406	16,357	56,784	160,764	0
25-1542	Engineering Assistant II	FT	A	GP	Fairbanks	203	19F	12.0		77,196	1,191	9,679	50,969	139,035	0
25-1544	Right-Of-Way Agent III	FT	A	GP	Fairbanks	203	18B / C	12.0		64,798	954	4,845	44,586	115,183	0
25-1545	Env Imp Any III	FT	A	GP	Fairbanks	203	19E / F	12.0		75,509	1,231	14,325	52,065	143,130	0
25-1546	Engineering Assistant II	FT	A	GP	Fairbanks	203	19B / C	12.0		67,577	926	0	43,821	112,324	0
25-1551	Engineer/Architect I	FT	A	GP	Fairbanks	203	22E / F	12.0		93,766	1,285	0	53,521	148,572	0
25-1556	Env Imp Any III	FT	A	GP	Fairbanks	203	19A / B	12.0		67,113	1,091	12,532	48,291	129,027	0
25-1558	Drafting Technician III	FT	A	GP	Fairbanks	203	15D / E	12.0		55,510	905	10,533	43,253	110,201	0
25-1559	Drafting Technician III	FT	A	GP	Fairbanks	203	15C / D	12.0		53,708	875	10,155	42,445	107,183	0
25-1565	Survey, Journey	PT	A	LL	Fairbanks	2EE	54J / K	9.5		49,134	0	21,900	41,104	112,138	0
25-1570	Engineer/Architect I	FT	A	GP	Fairbanks	203	22F / G	12.0		95,512	1,309	0	54,168	150,989	0
25-1571	Regional Engineering Geologist	FT	A	SS	Fairbanks	2S4	22D / E	12.0		99,336	0	0	55,624	154,960	0
25-1572	Right-Of-Way Agent III	FT	A	GP	Fairbanks	203	18F / G	12.0		74,019	1,090	5,554	48,264	128,927	0
25-1581	Engineer/Architect III	FT	A	SS	Fairbanks	203	25N	12.0		148,206	0	0	73,027	221,233	0
25-1599	Engineering Assistant III	FT	A	GP	Fairbanks	203	21C / D	12.0		81,006	1,110	0	48,795	130,911	0
25-1602	Engineer/Architect III	FT	A	SS	Fairbanks	203	25K	12.0		133,344	0	0	68,221	201,565	0
25-1604	Env Imp Any II	FT	A	GP	Fairbanks	203	17K / L	12.0		75,997	1,239	14,400	52,273	143,909	0
25-1607	Engineering Assistant III	FT	A	GP	Fairbanks	203	21C / D	12.0		81,006	1,110	0	48,795	130,911	0
25-1611	Engineering Assistant III	FT	A	GP	Fairbanks	203	21J / K	12.0		95,142	1,304	0	54,031	150,477	0
25-1612	Survey Lead	PT	A	LL	Fairbanks	2EE	53L	9.5		54,675	0	19,926	42,426	117,027	0
25-1622	Engineering Assistant II	FT	A	GP	Fairbanks	203	19E / F	12.0		74,721	1,024	0	46,467	122,212	0
25-1624	Engineering Geologist II	FT	A	GP	Fairbanks	203	18J / K	12.0		78,390	1,320	17,896	54,455	152,061	0
25-1630	Procurement Specialist II	FT	A	SS	Fairbanks	203	16P	12.0		86,811	0	9,397	54,466	150,674	0
25-1635	Engineering Geologist II	FT	A	GP	Fairbanks	203	18B / C	12.0		64,074	1,077	14,535	47,907	127,593	0
25-1636	Engineering Geologist II	FT	A	GP	Fairbanks	203	18E / F	12.0		70,584	1,187	16,065	50,885	138,721	0
25-1643	Mtlb Subjmy II	PT	A	LL	Fairbanks	2EE	57C	9.5		36,088	0	6,576	30,596	73,260	0

Note: If a position is split, an asterisk (*) will appear in the Split/Count column. If the split position is also counted in the component, two asterisks (**) will appear in this column. [No valid job title] appearing in the Job Class Title indicates that the PCN has an invalid class code or invalid range for the class code effective date of this scenario.

Personal Services Expenditure Detail
Department of Transportation/Public Facilities

Scenario: FY2021 Governor (16414)
Component: Northern Design and Engineering Services (2299)
RDU: Design, Engineering and Construction (526)

PCN	Job Class Title	Time Status	Retire Code	Barg Unit	Location	Salary Sched	Range / Step	Comp Months	Split / Count	Annual Salaries	COLA	Premium Pay	Annual Benefits	Total Costs	UGF Amount
25-1644	Driller, Sub-Journey	PT	A	LL	Fairbanks	2EE	54J / K	9.5		49,576	0	22,557	41,511	113,644	0
25-1645	Driller, Journey	FT	A	LL	Fairbanks	2EE	53F / J	12.0		64,356	0	24,700	51,673	140,729	0
25-1647	Tech Eng/Arch I	FT	A	GP	Fairbanks	203	24O	12.0		134,422	1,842	0	68,580	204,844	0
25-1648	Mtlb Subjrnly II	PT	A	LL	Fairbanks	2EE	57C	9.5		36,088	0	9,864	31,814	77,766	0
25-1673	Engineering Associate	FT	A	GP	Fairbanks	203	21E / F	12.0		86,475	1,185	0	50,821	138,481	0
25-1677	Engineer/Architect II	FT	A	SS	Fairbanks	203	23L / M	12.0		121,697	0	0	63,907	185,604	0
25-1682	Survey, Sub-Journey II	PT	A	LL	Fairbanks	2EE	56F	9.5		41,653	0	18,975	37,250	97,878	0
25-1683	Engineering Assistant II	FT	A	GP	Fairbanks	203	19E / F	12.0		76,746	1,052	0	47,217	125,015	0
25-1694	Survey, Sub-Journey II	PT	A	LL	Fairbanks	2EE	56L	9.5		46,180	0	21,037	39,690	106,907	0
25-1704	Engineering Assistant II	FT	A	GP	Fairbanks	203	19M / N	12.0		91,288	1,392	10,276	56,410	159,366	0
25-1707	Engineer/Architect III	FT	A	SS	Fairbanks	203	25C / D	12.0		116,207	0	0	61,873	178,080	0
25-1708	Engineer/Architect III	FT	A	SS	Fairbanks	203	25L	12.0		137,664	0	0	69,768	207,432	0
25-1712	Engineering Assistant II	FT	A	SS	Fairbanks	603	19R	12.0		113,801	0	8,213	64,024	186,038	0
25-1729	Right-Of-Way Agent III	FT	A	GP	Fairbanks	203	18G	12.0		74,496	1,099	5,730	48,506	129,831	0
25-1731	Engineering Assistant III	FT	A	GP	Fairbanks	203	21G	12.0		91,068	1,248	0	52,522	144,838	0
25-1732	Administrative Assistant II	FT	A	GP	Fairbanks	203	14P / Q	12.0		71,324	1,052	5,439	47,223	125,038	7,502
25-1737	Office Assistant II	FT	A	GP	Fairbanks	203	10P	12.0		53,534	734	0	38,619	92,887	0
25-1740	Land Surveyor I	FT	A	GP	Fairbanks	203	21N	12.0		105,192	1,442	0	57,753	164,387	0
25-1756	Administrative Assistant I	FT	A	GP	Fairbanks	203	12O / P	12.0		59,285	875	4,557	42,437	107,154	0
25-1757	Office Assistant II	FT	A	GP	Fairbanks	203	10G	12.0		43,092	591	0	34,752	78,435	0
25-1766	Engineer/Architect III	FT	A	SS	Fairbanks	203	25K	12.0		133,344	0	0	68,221	201,565	0
25-1768	Land Surveyor I	FT	A	GP	Fairbanks	203	21G	12.0		91,068	1,248	0	52,522	144,838	0
25-1770	Drafting Technician III	FT	A	GP	Fairbanks	203	15K	12.0		65,364	1,068	12,570	47,657	126,659	0
25-1771	Env Imp Any III	FT	A	GP	Fairbanks	203	19K	12.0		85,572	1,398	16,455	56,581	160,006	0
25-1775	Driller, Journey	PT	A	LL	Fairbanks	2EE	53J / K	9.5		52,532	0	25,566	43,721	121,819	0
25-1776	Mtlb Subjrnly II	PT	A	LL	Fairbanks	2EE	57B / C	9.5		36,029	0	9,558	31,679	77,266	0
25-1777	Engineering Assistant I	FT	A	GP	Fairbanks	203	17B / C	12.0		58,747	805	0	40,550	100,102	0
25-1802	Engineering Assistant II	FT	A	GP	Fairbanks	203	19B / C	12.0		67,485	1,067	10,368	47,627	126,547	0
25-1832	Drafting Technician III	FT	A	GP	Fairbanks	203	15G	12.0		60,828	994	11,696	45,653	119,171	0
25-1850	Env Imp Any II	FT	A	GP	Fairbanks	203	17G	12.0		69,612	1,137	13,387	49,533	133,669	0
25-1871	Survey Lead	PT	A	LL	Fairbanks	2EE	53L / M	9.5		55,486	0	19,926	42,726	118,138	0
25-2410	Env Imp Any III	FT	A	GP	Fairbanks	203	19F / G	12.0		78,764	1,283	14,846	53,463	148,356	0
25-2418	Tech Eng/Arch I	FT	A	GP	Fairbanks	203	24K / L	12.0		124,246	1,703	0	64,811	190,760	0
25-3449	Engineering Assistant III	FT	A	GP	Fairbanks	203	21K / L	12.0		100,108	1,372	0	55,870	157,350	0
25-3450	Engineering Assistant III	FT	A	GP	Fairbanks	203	21K / L	12.0		98,246	1,346	0	55,181	154,773	0
25-3452	Engineer/Architect I	FT	A	GP	Fairbanks	203	22F / G	12.0		94,735	1,298	0	53,880	149,913	0
25-3453	Engineering Assistant III	FT	A	GP	Fairbanks	203	21C / D	12.0		81,006	1,110	0	48,795	130,911	0
25-3516	Engineer/Architect III	FT	A	SS	Fairbanks	203	25P	12.0		159,524	0	0	76,525	236,049	0

Note: If a position is split, an asterisk (*) will appear in the Split/Count column. If the split position is also counted in the component, two asterisks (**) will appear in this column. [No valid job title] appearing in the Job Class Title indicates that the PCN has an invalid class code or invalid range for the class code effective date of this scenario.

Personal Services Expenditure Detail
Department of Transportation/Public Facilities

Scenario: FY2021 Governor (16414)
Component: Northern Design and Engineering Services (2299)
RDU: Design, Engineering and Construction (526)

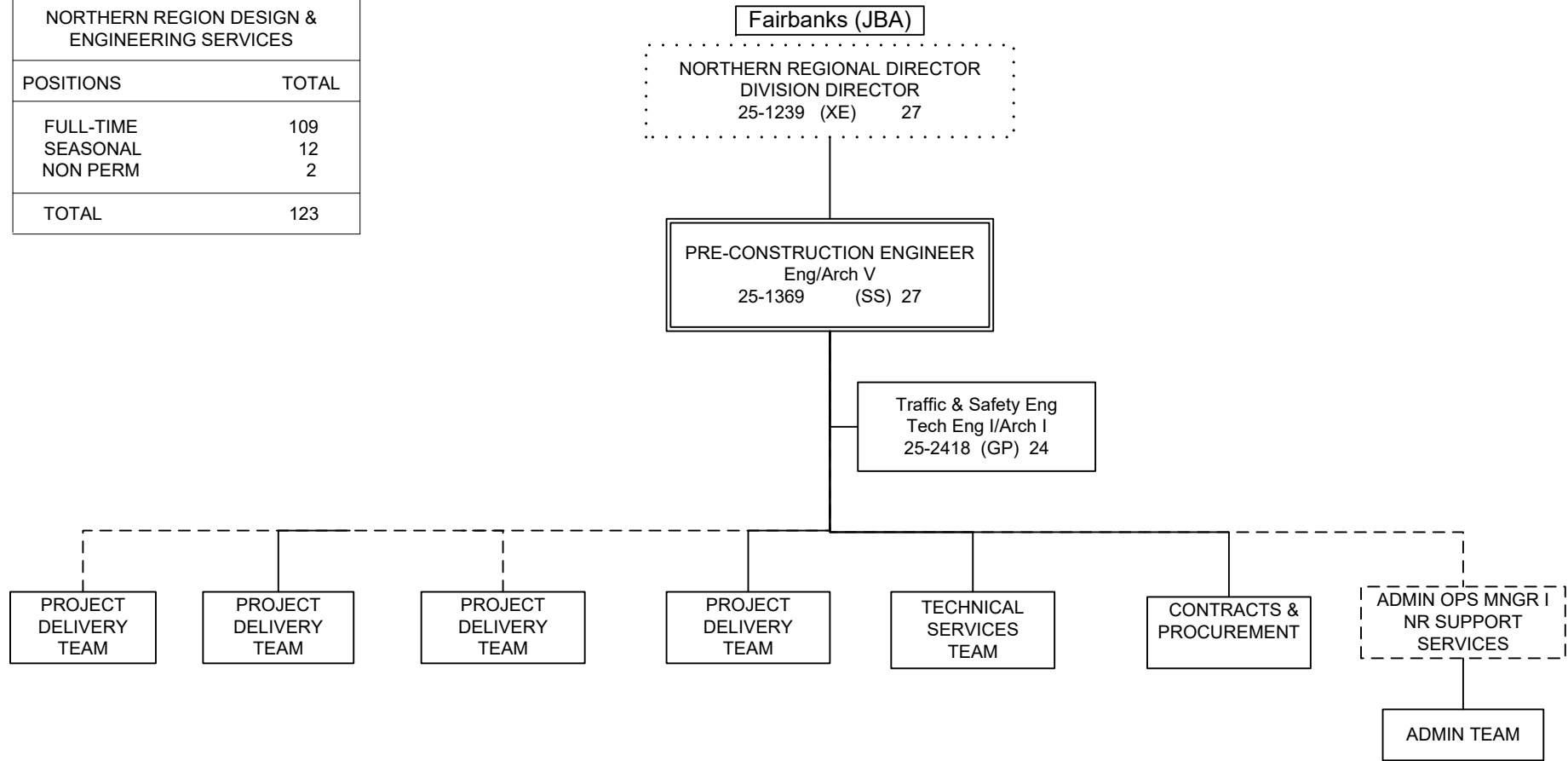
PCN	Job Class Title	Time Status	Retire Code	Barg Unit	Location	Salary Sched	Range / Step	Comp Months	Split / Count	Annual Salaries	COLA	Premium Pay	Annual Benefits	Total Costs	UGF Amount
25-3574	Engineer/Architect I	FT	A	GP	Fairbanks	203	22L	12.0		108,336	1,485	0	58,918	168,739	0
25-3593	Env Imp Any III	FT	A	GP	Fairbanks	203	19K	12.0		85,572	1,398	16,455	56,581	160,006	0
25-3605	Engineering Assistant III	FT	A	GP	Fairbanks	203	21C / D	12.0		81,371	1,115	0	48,930	131,416	0
25-3606	Tech Eng/Arch I	FT	A	GP	Fairbanks	203	24J / K	12.0		118,606	1,625	0	62,722	182,953	0
25-3607	Engineer/Architect II	FT	A	GP	Fairbanks	203	23F / G	12.0		103,528	1,419	0	57,137	162,084	0
25-3608	Engineer/Architect I	FT	A	GP	Fairbanks	203	22C / D	12.0		87,894	1,205	0	51,346	140,445	0
25-3694	Right-Of-Way Agent II	FT	A	GP	Fairbanks	203	16B / C	12.0		55,145	756	0	39,216	95,117	0
25-IN1202	College Intern III	NP	N	EE	Fairbanks	N03	10A	6.0		18,320	0	7,046	3,189	28,555	0
25-IN1204	College Intern II	NP	N	EE	Fairbanks	N03	9A	6.0		17,258	0	6,637	3,004	26,899	0
													Total Salary Costs:	10,513,860	
													Total COLA:	102,599	
													Total Premium Pay:	698,034	
													Total Benefits:	6,358,940	
													Total Pre-Vacancy:	17,673,433	
													Minus Vacancy Adjustment of 3.45%:	(610,033)	
													Total Post-Vacancy:	17,063,400	
													Plus Lump Sum Premium Pay:	0	
													Personal Services Line 100:	17,063,400	
Total Component Months:		1,434.0													

PCN Funding Sources:	Pre-Vacancy	Post-Vacancy	Percent
1004 General Fund Receipts	73,375	70,842	0.42%
1005 General Fund/Program Receipts	140,347	135,503	0.79%
1007 Interagency Receipts	151,533	146,303	0.86%
1039 U/A Indirect Cost Recovery	2,958,106	2,856,001	16.74%
1061 Capital Improvement Project Receipts	14,321,252	13,826,926	81.03%
1232 In-state Pipeline Fund Interagency	28,820	27,826	0.16%
Total PCN Funding:	17,673,433	17,063,400	100.00%

Note: If a position is split, an asterisk (*) will appear in the Split/Count column. If the split position is also counted in the component, two asterisks (**) will appear in this column. [No valid job title] appearing in the Job Class Title indicates that the PCN has an invalid class code or invalid range for the class code effective date of this scenario.

DEPARTMENT OF TRANSPORTATION & PUBLIC FACILITIES
 DESIGN, ENGINEERING & CONSTRUCTION
 NORTHERN DESIGN & ENGINEERING SERVICES (2299)
 FY2021 GOVERNORS BUDGET

NORTHERN REGION DESIGN & ENGINEERING SERVICES	
POSITIONS	TOTAL
FULL-TIME	109
SEASONAL	12
NON PERM	2
TOTAL	123



Positions	Total
Full-Time	2
Seasonal	0
Total	2

**Positions located in Fairbanks (JBA) unless otherwise noted.
 Dotted line positions are not budgeted in this component.**

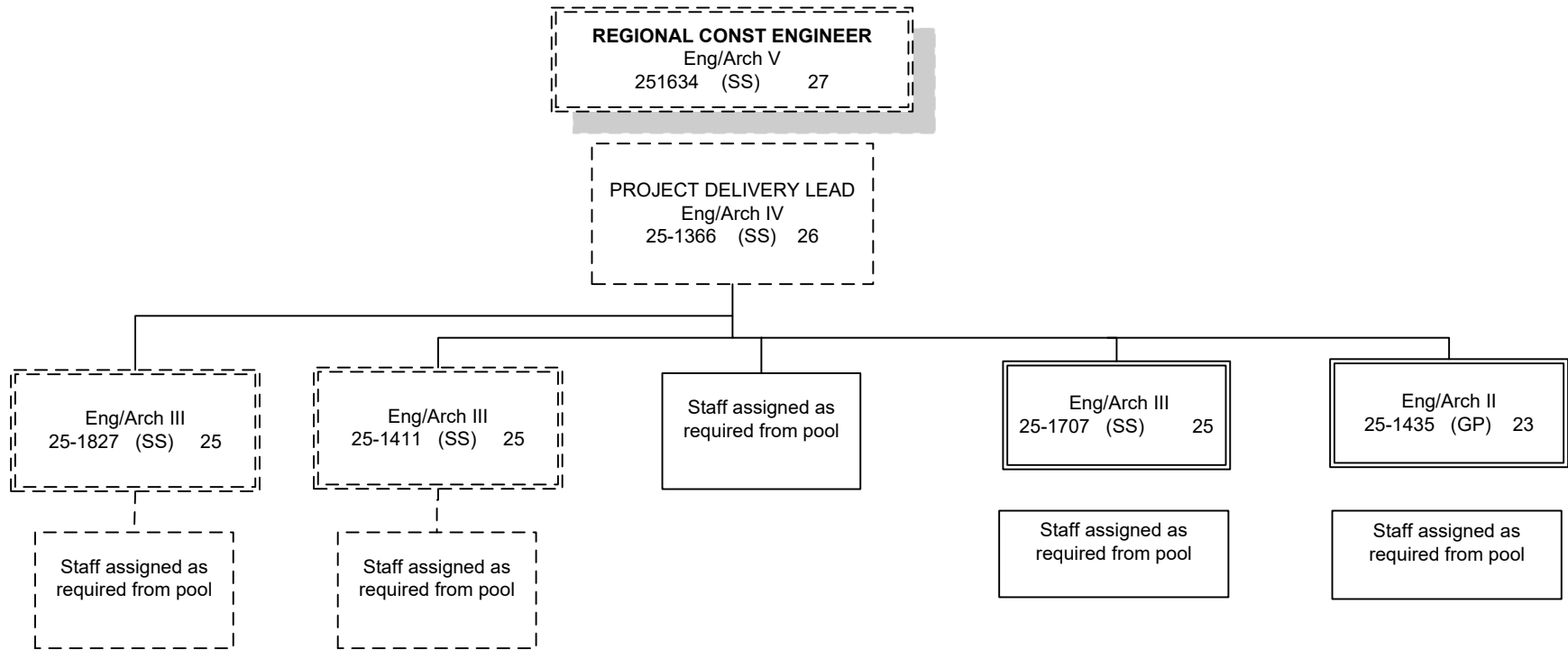
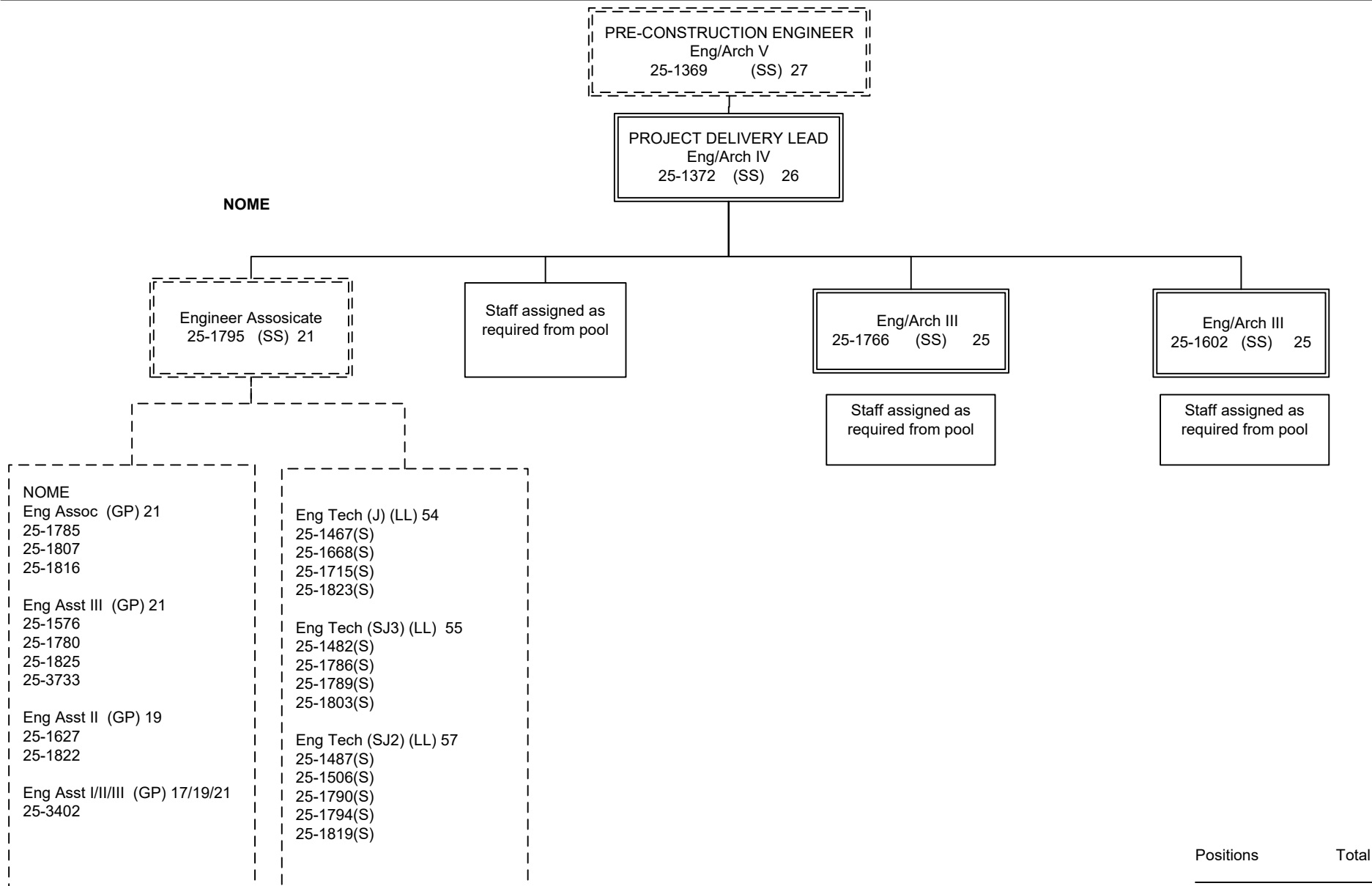


CHART 3

Positions	Total
Full-Time	2
Seasonal	0
Total	2

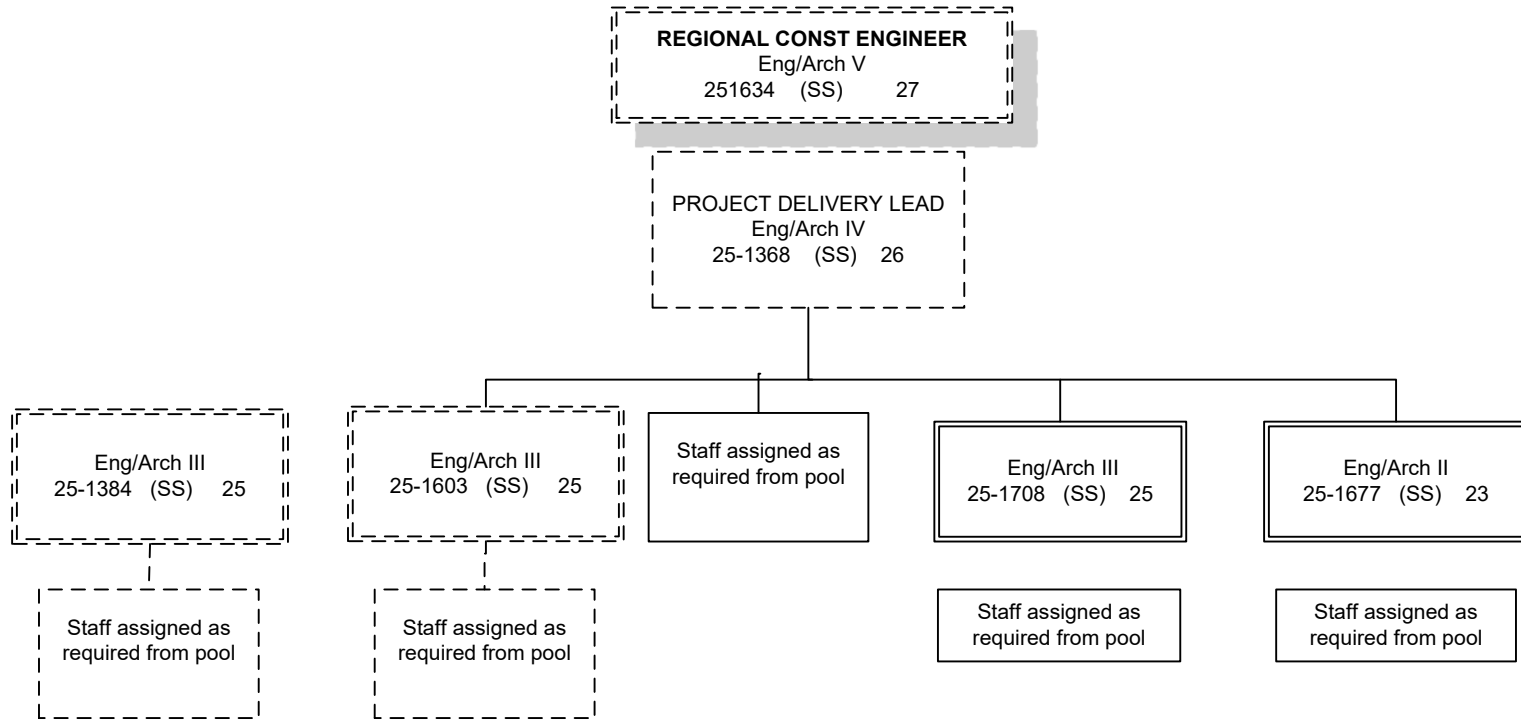
Positions located in Fairbanks (JBA) unless otherwise noted.
 Dotted line positions are not budgeted in this component.



Positions	Total
Full-Time	3
Seasonal	0
Non perm	0
Total	3

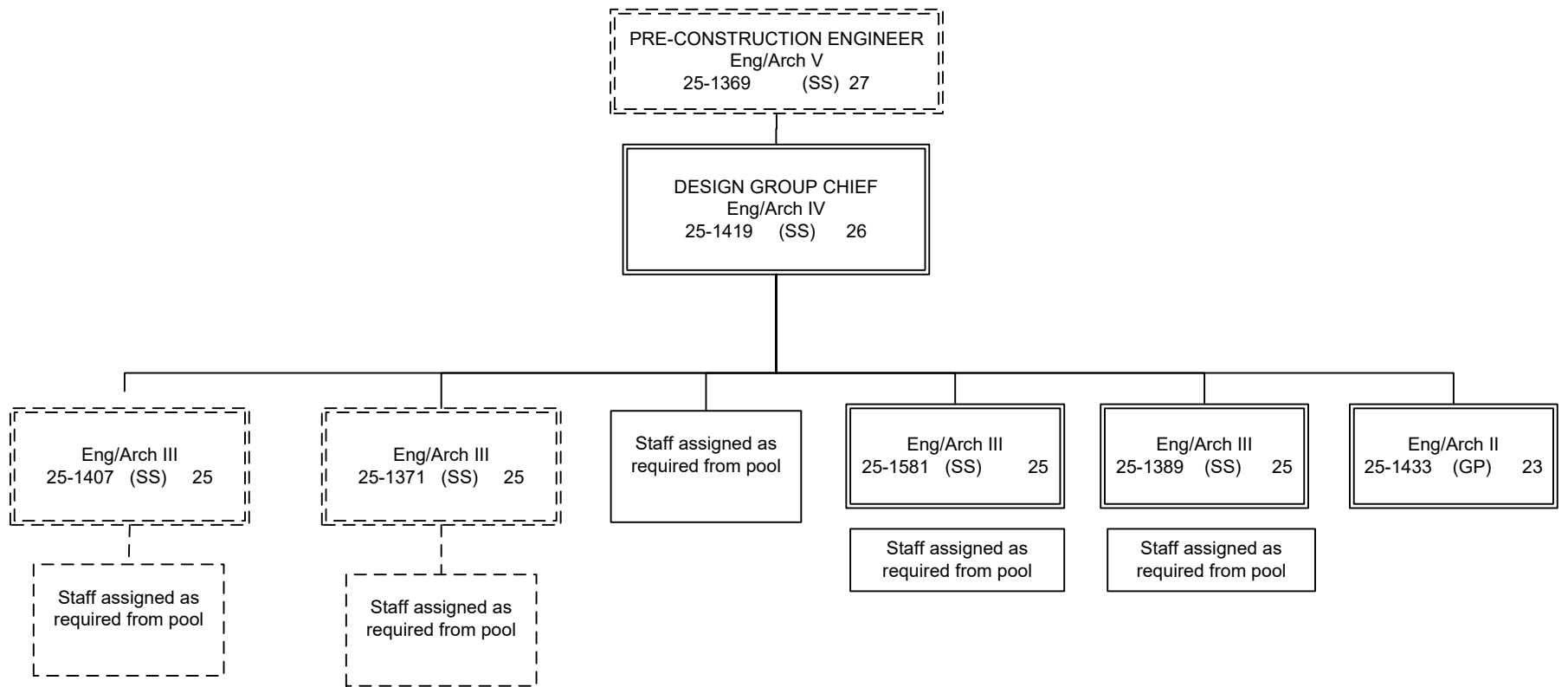
Positions located in Fairbanks (JBA) unless otherwise noted.
 Dotted line positions are not budgeted in this component.

(s) = Seasonal Position



Positions	Total
Full-Time	2
Seasonal	0
Total	2

**Positions located in Fairbanks (JBA) unless otherwise noted.
 Dotted line positions are not budgeted in this component.**



Positions	Total
Full-Time	4
Seasonal	0
Total	4

**Positions located in Fairbanks (JBA) unless otherwise noted.
 Dotted line positions are not budgeted in this component.**

DESIGN ENGINEERING STAFF ASSIGNED AS REQUIRED

Eng Arch I (GP) 22
 251432
 251437
 251442
 251446
 251531
 251570
 253452
 Eng Arch II (GP) 23
 253607

Eng Asst III (GP) 21
 250165
 251394
 251530
 251537
 251599
 251607
 251731
 253449
 253453
 253605
 Eng Arch I (GP) 22
 253608

Eng Asst II (GP) 19
 251542
 251622
 251704
 251802

Eng Asst I/II (GP) 17/19
 251538
 251546
 251777

Eng Asst III/Eng Associate/
 Eng- Arch I (GP) 21/22
 251540

Eng Arch I/II (GP) 22/23
 251382

Env Impact Analysts III (GP) 19
 251536
 251545
 251556
 251771
 252410
 253593

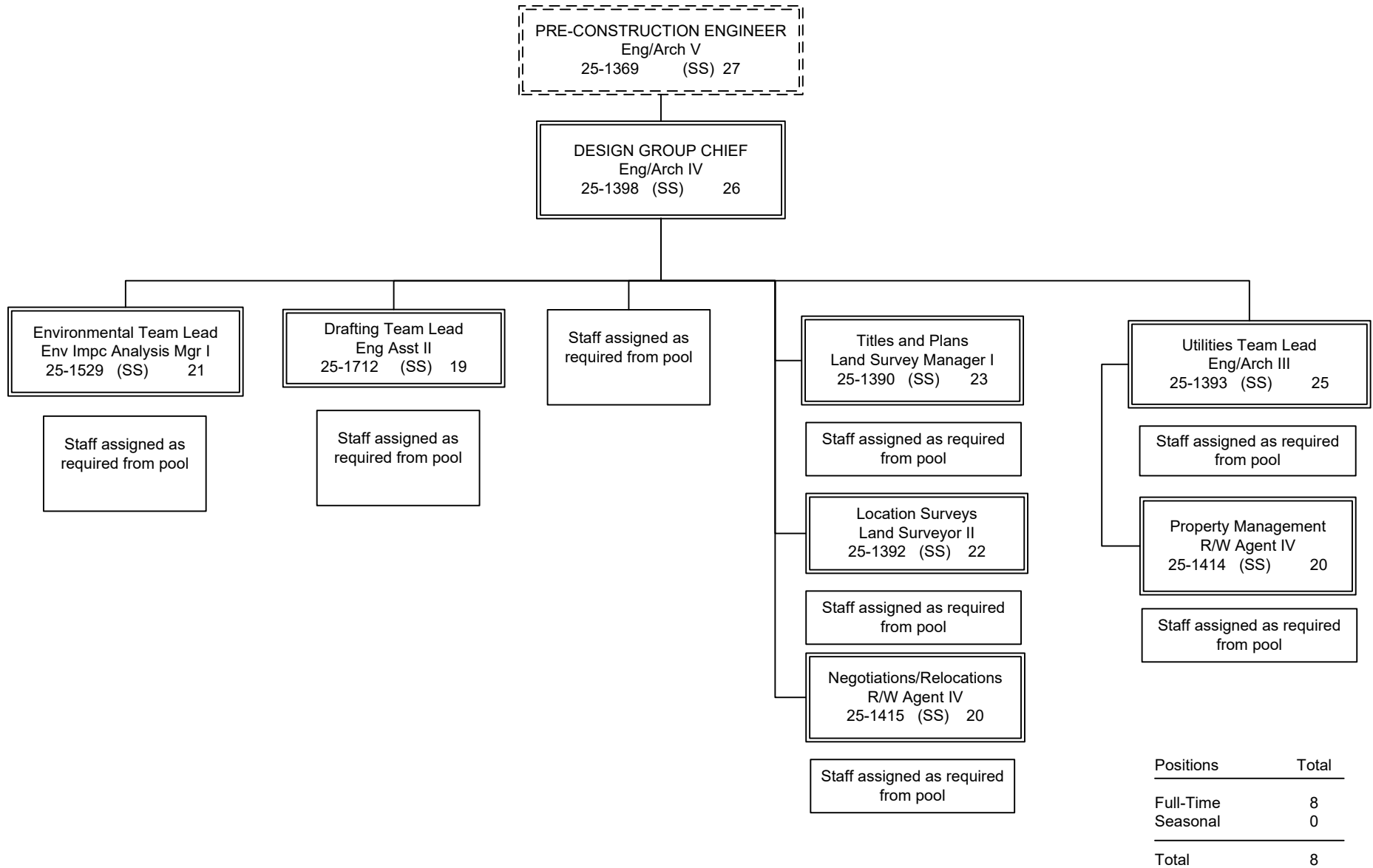
Drafting Tech III (GP) 15
 251559
 251558
 251770
 251832

College Intern I/II/III/IV (EE)8/9/10/12
 25IN1202
 25IN1204

Env Impact Analysts II (GP) 17
 251532
 251604
 251850

Env Impact Analysts I/II/III (GP) 15/17/19
 251426

Positions	Total
Full-Time	42
Seasonal	0
<u>Non Perm</u>	<u>2</u>
Total	46



Positions located in Fairbanks (JBA) unless otherwise noted.
 Dotted line positions are not budgeted in this component.

ROW & UTILITIES STAFF ASSIGNED AS REQUIRED

Eng Arch I (GP) 22
 25-1396

Land Surveyor I (GP) 21
 25-1740
 25-1768

Eng Asst III (GP) 21
 25-1406
 25-1409
 25-1421
 25-1611
 25-3450

Eng Asst I/II (GP) 17/19
 25-1683

ROW Agent III (GP) 18
 25-1388
 25-1391
 25-1399
 25-1416
 25-1460
 25-1544
 25-1572
 25-1729

ROW Agent II (GP) 16
 25-1400
 25-1423
 25-3694

Survey – Lead (LL) 53
 25-1612(S)
 25-1871(S)

ROW Asst (GP) 12
 25-1425

Survey – J (LL) 54
 25-1500(S)
 25-1565(S)

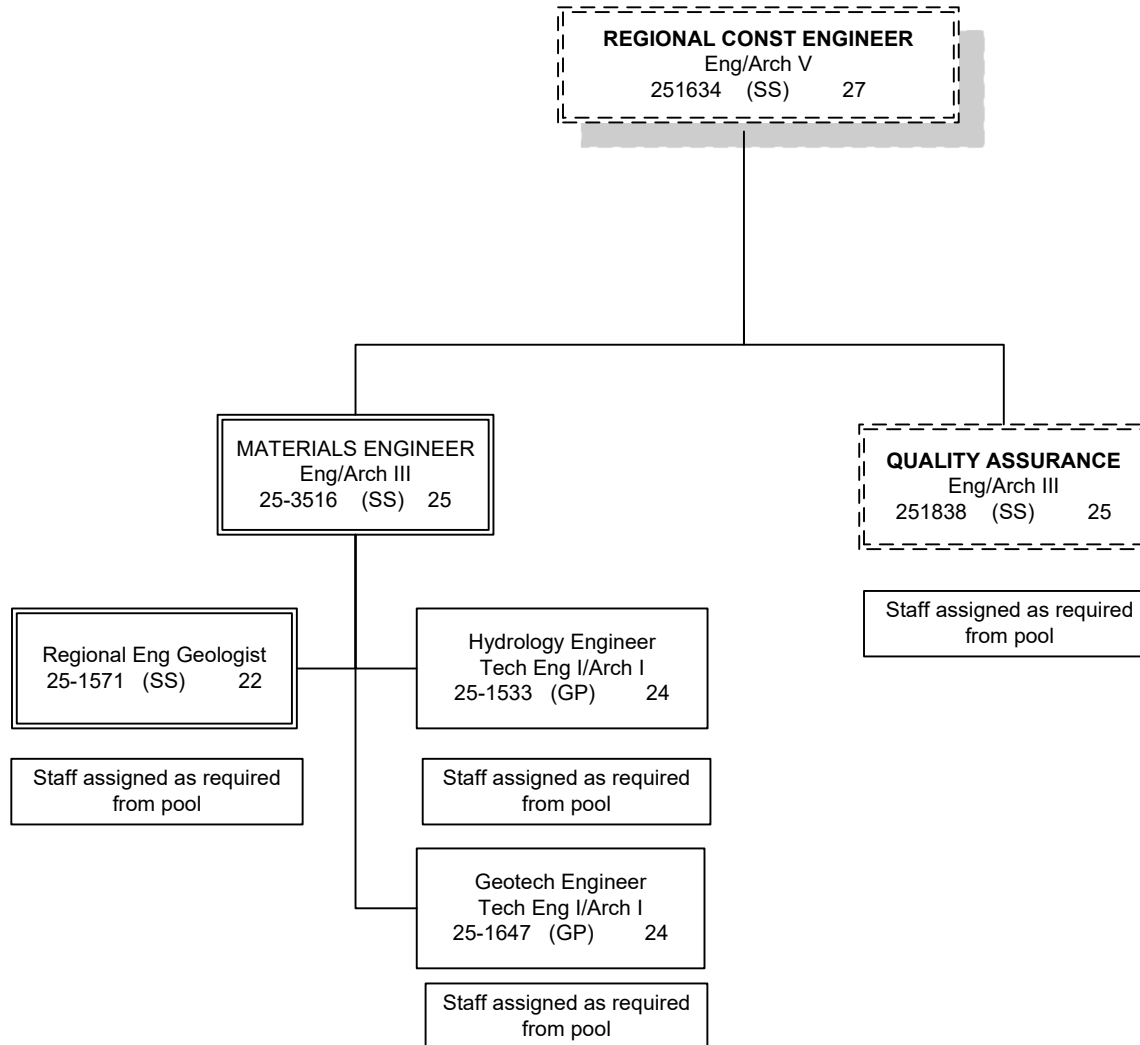
Survey – SJ II (LL) 56
 25-1682(S)
 25-1694(S)

SJ – Sub Journey
 J = Journey

Positions	Total
Full-Time	21
Seasonal	6
Total	27

**Positions located in Fairbanks (JBA) unless otherwise noted.
 Dotted line positions are not budgeted in this component.**

(s) = Seasonal Position



Positions	Total
Full-Time	4
Seasonal	0
Non Perm	0
Total	4

**Positions located in Fairbanks (JBA) unless otherwise noted.
 Dotted line positions are not budgeted in this component.**

(s) = Seasonal Position

MATERIALS & QUALITY ASSURANCE STAFF ASSIGNED AS REQUIRED

Eng/Arch I (GP) 22
 25-1444
 25-1551
 25-3574

Eng Asst III (GP) 21
 25-1439
 25-1441

Eng Geologist II (GP) 18
 25-1624
 25-1635
 25-1636

Driller Journey (LL) 53
 25-1645
 25-1775(S)

Driller SJ (LL) 54
 25-1491(S)
 25-1644(S)

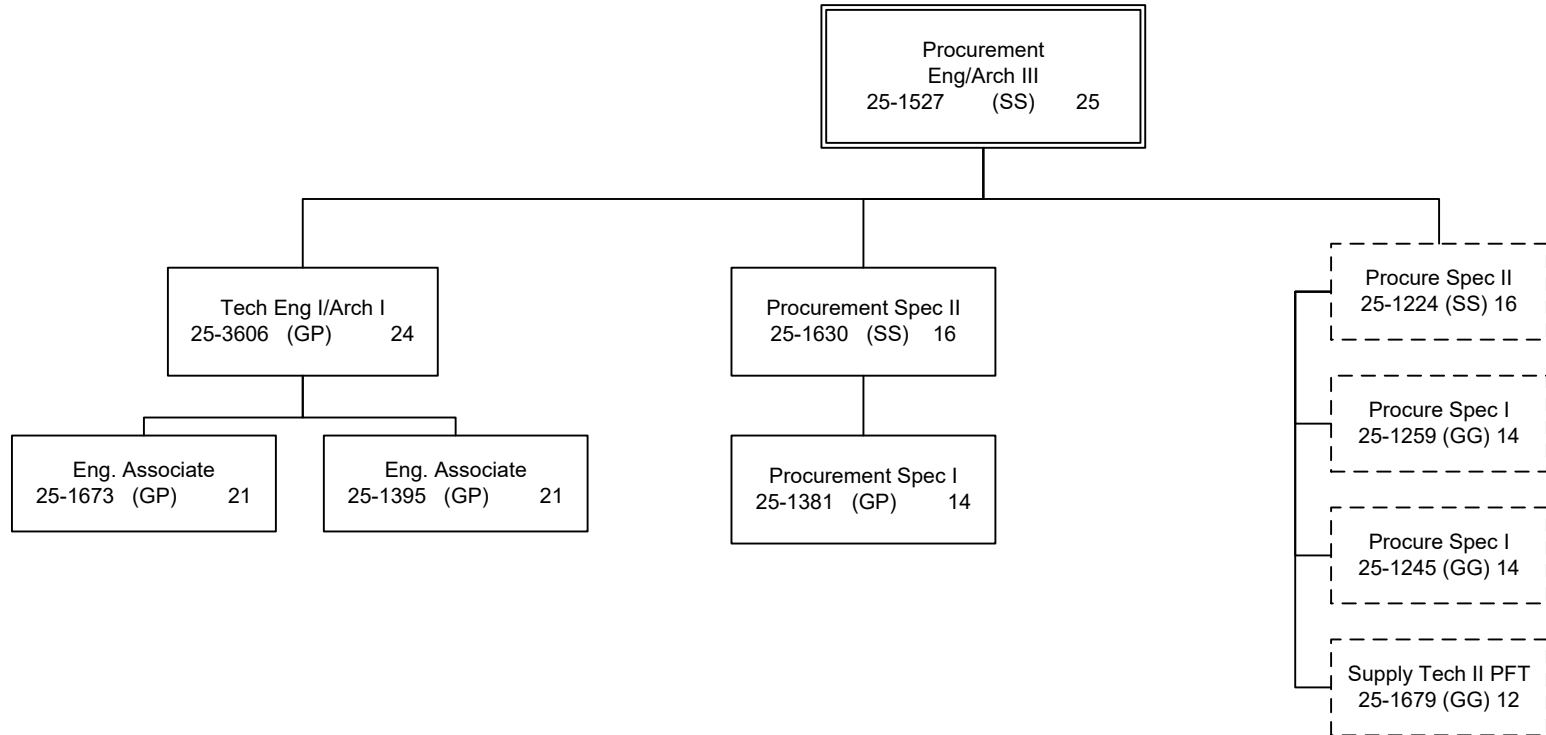
Mat Lab Tech SJ I/II/III/IV, J (LL)
 59/57/56/54/53
 25-1643(S)
 25-1648(S)
 25-1776(S)

SJ – Sub Journey
 J = Journey

<u>Positions</u>	<u>Total</u>
Full-Time	9
Seasonal	6
Total	15

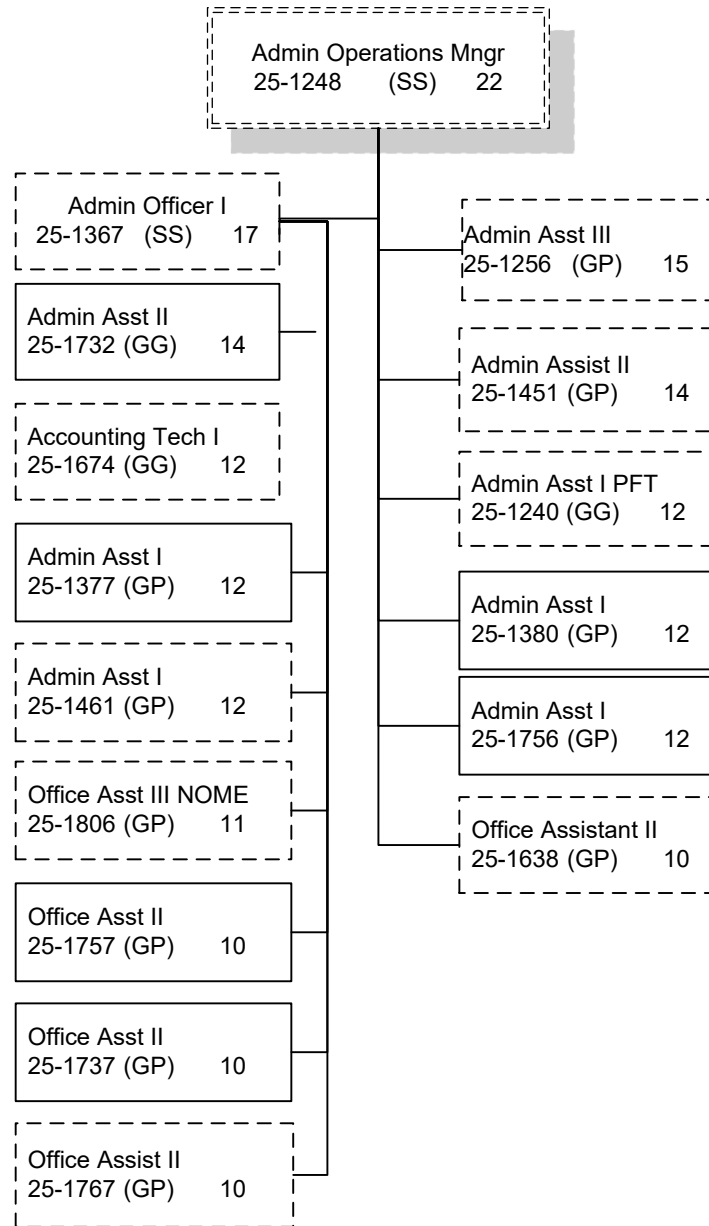
**Positions located in Fairbanks (JBA) unless otherwise noted.
 Dotted line positions are not budgeted in this component.**

(s) = Seasonal Position



Positions	Total
Full-Time	6
Seasonal	0
Total	6

Positions located in Fairbanks (JBA) unless otherwise noted.
 Dotted line positions are not budgeted in this component.



Positions	Total
Full-Time	6
Seasonal	0
Total	6

**Positions located in Fairbanks (JBA) unless otherwise noted.
 Dotted line positions are not budgeted in this component.**