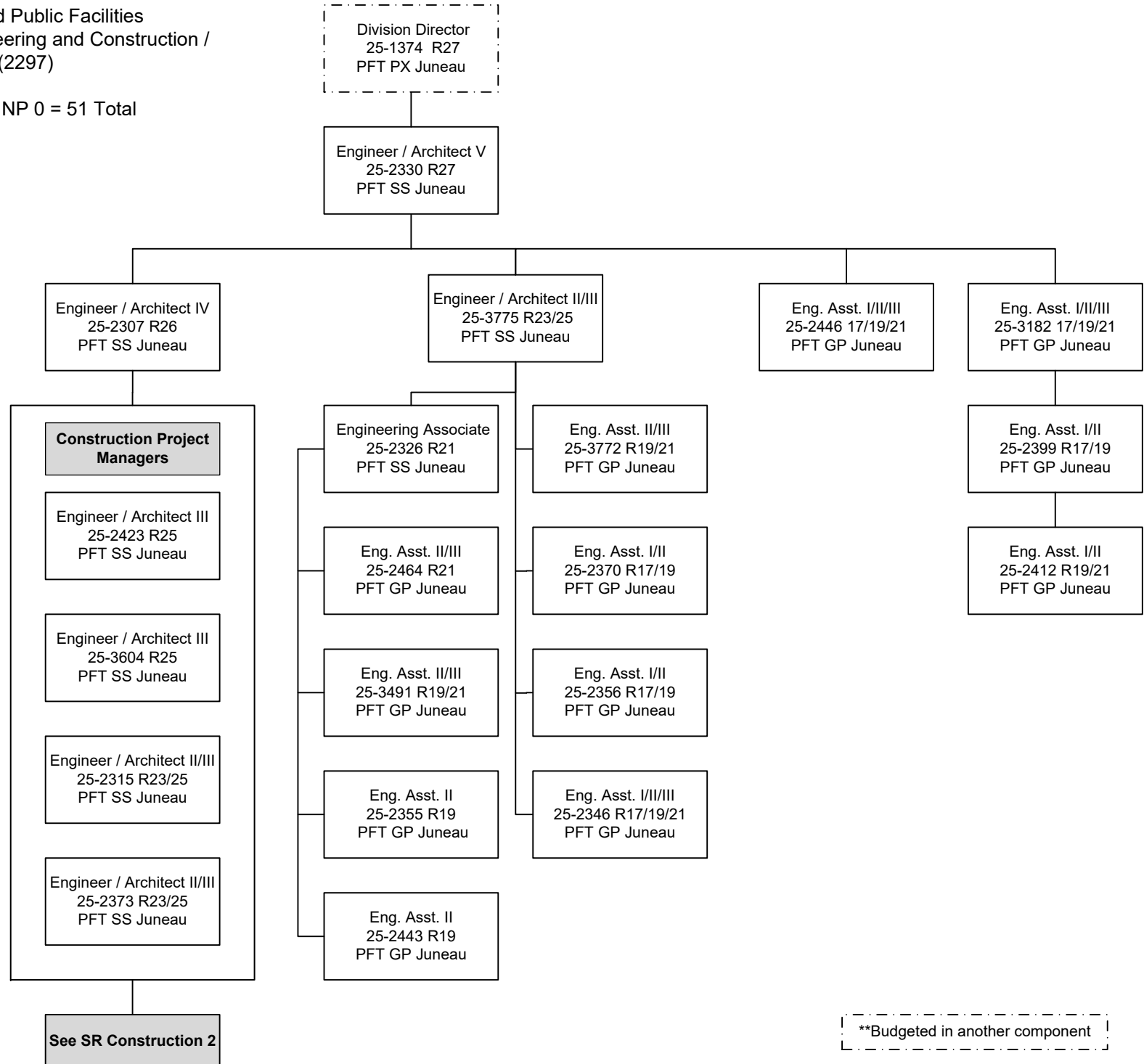


Department of Transportation and Public Facilities
 RDU/Component: Design, Engineering and Construction /
 Southcoast Region Construction (2297)
 FY2021 Governor's Budget
 Position Totals: PFT 36/ PPT 15/ NP 0 = 51 Total



**Budgeted in another component

Department of Transportation and Public Facilities
 RDU/Component: Design, Engineering and Construction /
 Southcoast Region Construction (2297)
 FY2021 Governor's Budget

