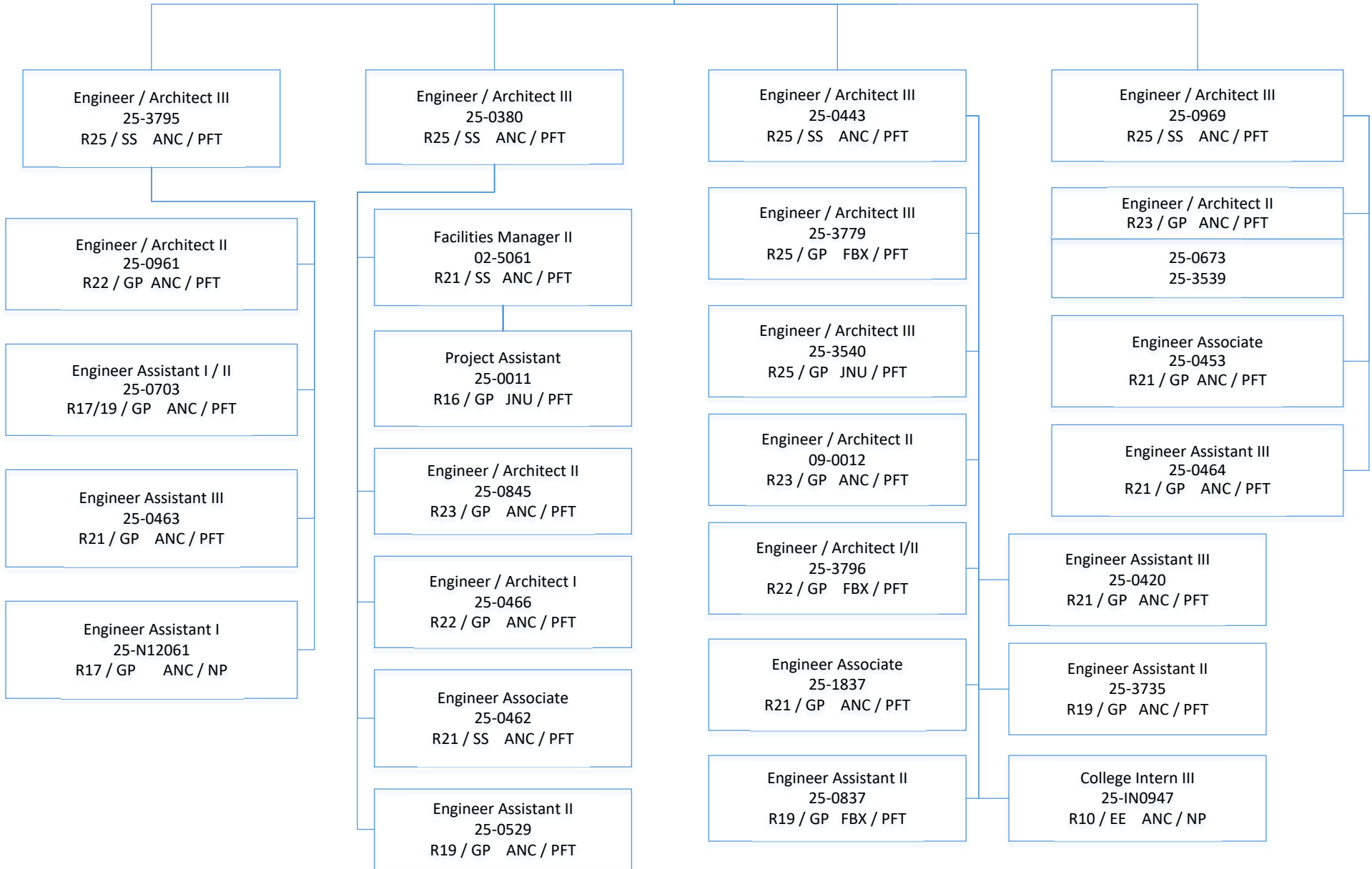
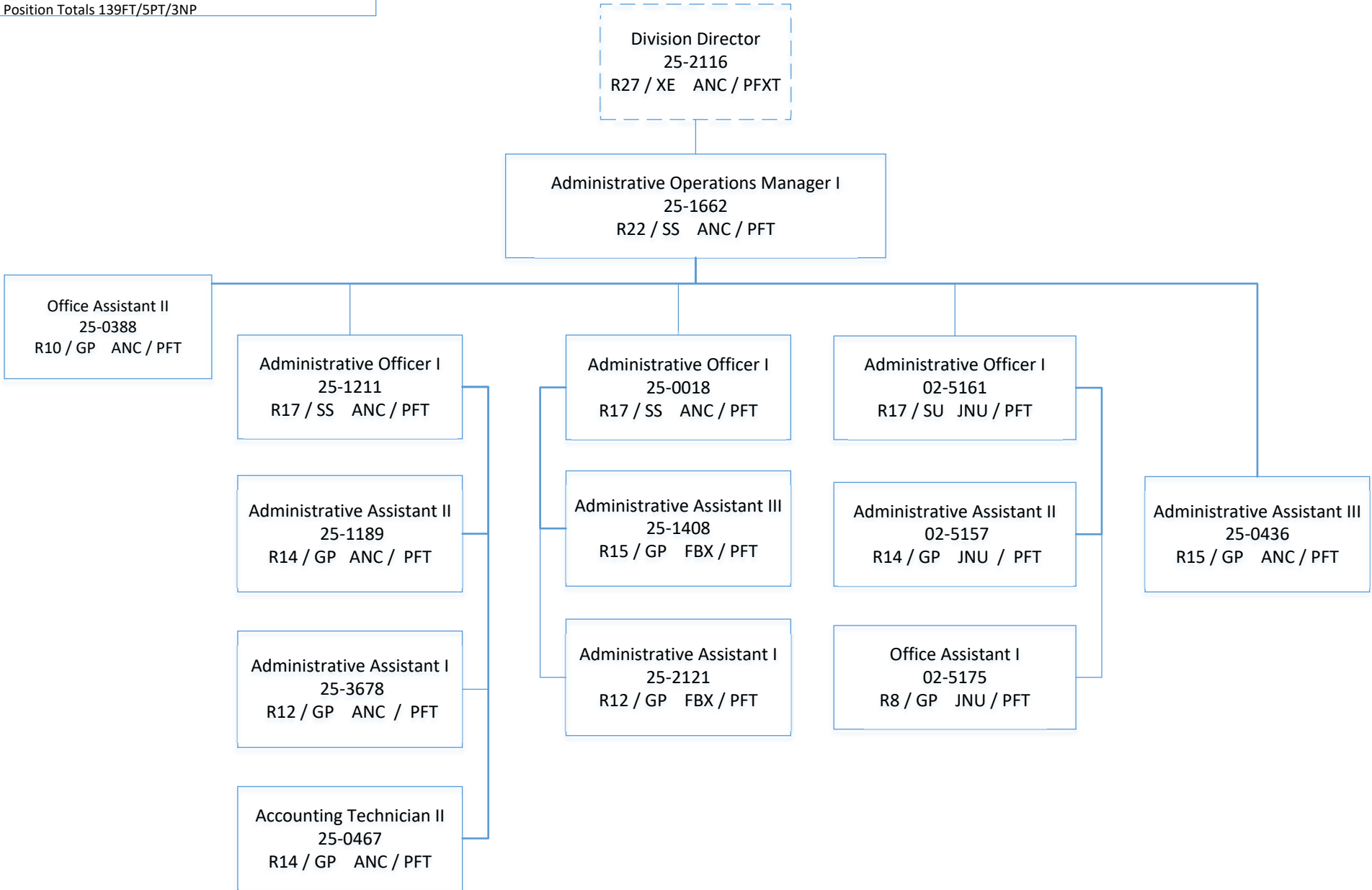


DEPARTMENT OF TRANSPORTATION & PUBLIC FACILITIES  
RDU: HIGHWAYS, AVIATION AND FACILITIES  
COMPONENT: FACILITIES SERVICES (3195)  
Statewide Public Facilities  
FY2021 Governor's Budget  
Position Totals 139FT/5PT/3NP

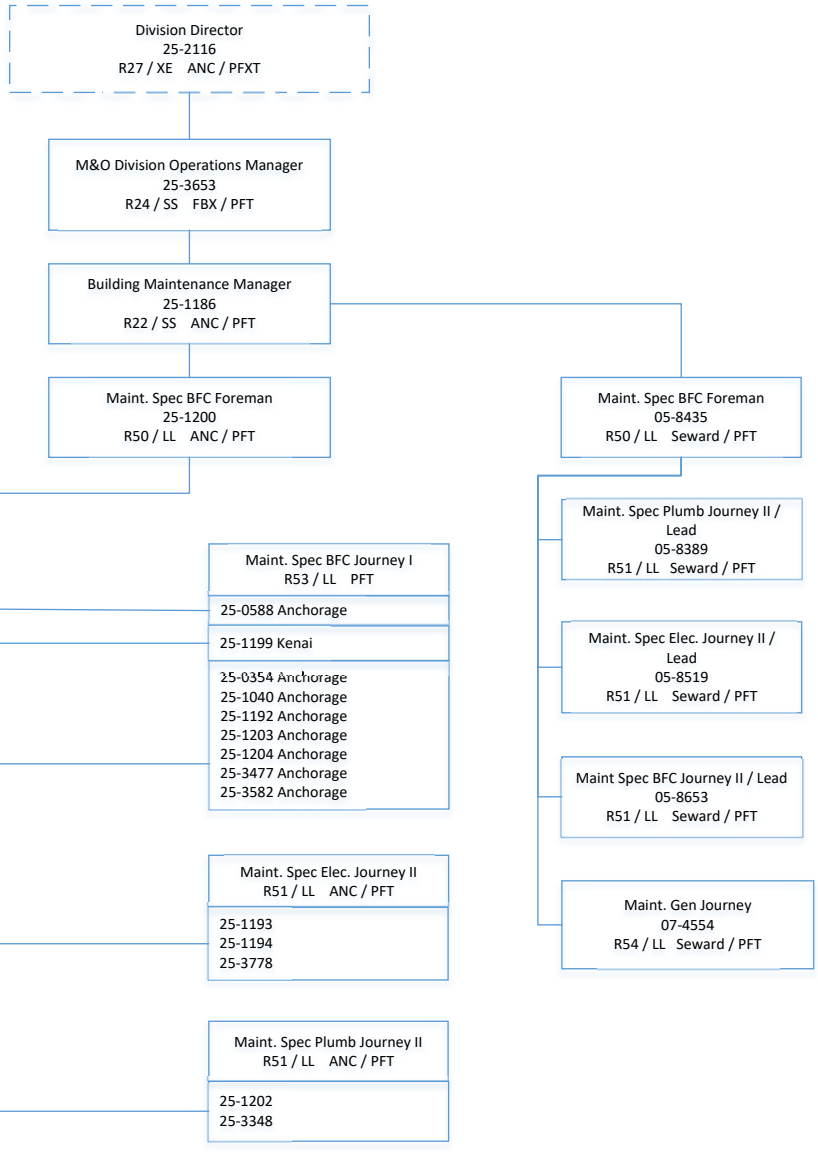
Division Director  
25-2116  
R27 / XE ANC / PFXT



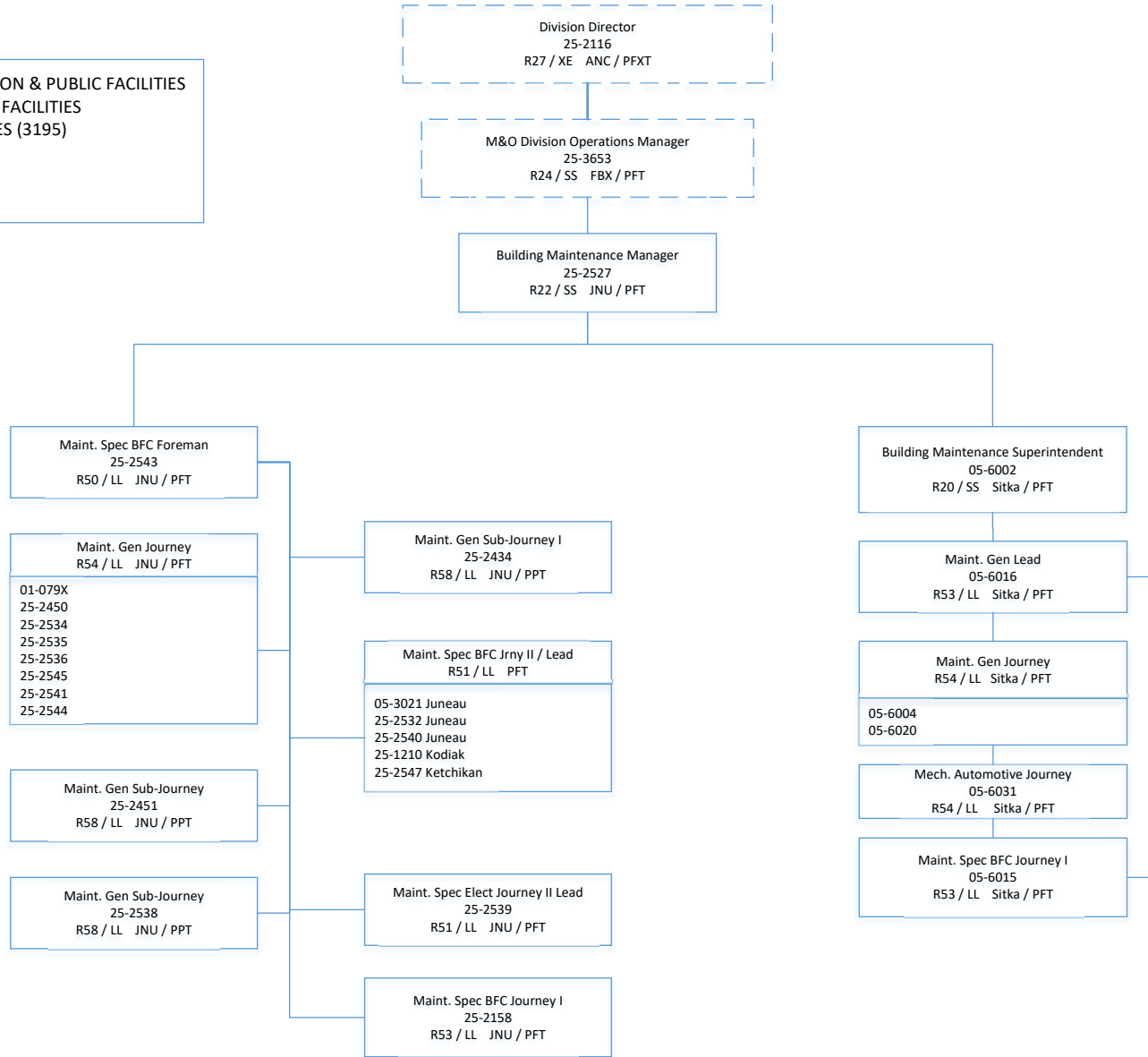
DEPARTMENT OF TRANSPORTATION & PUBLIC FACILITIES  
RDU: HIGHWAYS, AVIATION AND FACILITIES  
COMPONENT: FACILITIES SERVICES (3195)  
Statewide Public Facilities  
FY2021 Governor's Budget  
Position Totals 139FT/5PT/3NP



DEPARTMENT OF TRANSPORTATION & PUBLIC FACILITIES  
 RDU: HIGHWAYS, AVIATION AND FACILITIES  
 COMPONENT: FACILITIES SERVICES (3195)  
 Statewide Public Facilities  
 FY2021 Governor's Budget  
 Position Totals 139FT/5PT/3NP



DEPARTMENT OF TRANSPORTATION & PUBLIC FACILITIES  
 RDU: HIGHWAYS, AVIATION AND FACILITIES  
 COMPONENT: FACILITIES SERVICES (3195)  
 Statewide Public Facilities  
 FY2021 Governor's Budget  
 Position Totals 139FT/5PT/3NP



DEPARTMENT OF TRANSPORTATION & PUBLIC FACILITIES  
 RDU: HIGHWAYS, AVIATION AND FACILITIES  
 COMPONENT: FACILITIES SERVICES (3195)  
 Statewide Public Facilities  
 FY2021 Governor's Budget  
 Position Totals 139FT/5PT/3NP

