

State of Alaska
FY2021 Governor's Operating Budget

Department of Transportation/Public Facilities
Central Region Highways and Aviation
Component Budget Summary

Component: Central Region Highways and Aviation

Contribution to Department's Mission

Efficiently operate, preserve, protect, manage, and control the state's highway, airport, and harbor systems.

Core Services

- Winter operation, preservation, and repair, including snow plowing and removal, sanding, de-icing, avalanche prevention and control, drift control, snow fencing, and culvert thawing to keep roads and airports open and safe for travel.
- Summer road and airport operation, preservation, and repair, including: grading, pothole patching, crack sealing, leveling of heaves and dips, pavement repairs, brush clearing, street sweeping, dust control, drainage cleaning and repair, erosion control, bike path preservation, fence and guardrail repair, bridge painting and repair, and sign preservation.
- Preserve road and airport lighting systems including: maintenance of traffic signals, intersection and road illumination, airport runway and taxiway lighting, beacons, segmented circles, and wind cones.
- Maintain federally mandated airport security including: access control, badging, and fencing in accordance with the Federal Aviation Administration (FAA) and the Department of Homeland Security Transportation Security Administration (TSA).
- Airport operation compliance, including inspection and assurance, that state airports are operated in accordance with FAA operating regulations.
- Provide real-time winter road conditions.
- Emergency disaster response to both man-made and natural disasters.
- Control of roadside litter and perform trash removal at rest areas, turnouts, and campgrounds at department-owned facilities.
- Control of encroachments on driveways, access roads, signs, utilities, and other state rights-of-way.
- Maintain state-owned harbor facilities and seaplane bases, including breakwaters, floats, and electrical systems.
- Provide an active avalanche prevention program.

Major Component Accomplishments in 2019

- Operated, maintained and repaired 4,632 lane miles of roads and 548 lane miles of aviation-operation surfaces at 70 airports.
- Met current TSA security requirements for security personnel and FAA Part 139 requirements at certificated airports to maintain operating certificates.
- Applied 1,793,388 linear feet of crack seal material to preserve asphalt on state highways, performed brush cutting along 2,579 lane miles of highways, striped 3,222 lane miles of roadways, installed or repaired 21,649 linear feet of guardrail, replaced or repaired 36 failing culverts, provided surface maintenance on either gravel or paved runways at 59 airports, and performed maintenance on 17 bridges.
- Completed four emergency repair projects on highways in the Kenai Peninsula District that were damaged by the October 2018 flood.
- Supported earthquake recovery operations by crack sealing and patching damaged pavement, monitoring and maintaining temporary surfaces and traffic control devices at damage locations, and identifying and cataloging additional earthquake damage sites for future repair.
- Completed gravel resurfacing of Kongiganak, Atmutluak, and Kasigluk airports to resolve surface variations and provide for improved aircraft operations.
- Managed emergency replacement of a bridge girder on the Tudor overcrossing bridge, affecting the Seward Highway. Implemented traffic control and contract procedures that minimized traffic delays on the affected highways.
- Continued to expand use of salt brine for winter ice control – increased application rates of salt brine in the Anchorage area and on the Kenai Peninsula. Use of improved salt brine provides safer roads and results with less use of both salt and sand.

Key Component Challenges

- Meeting the public's expectations for winter and summer operation and preservation activities with reduced workforce.
- Increasing cost of equipment and materials.
- Federal environmental mandates and programs have dramatically complicated operation and preservation efforts, and increased paperwork and documentation necessary to meet department responsibilities. Programs require significant training, equipment, paperwork and attention that impacts net productivity.
- Keeping existing road and airport systems in serviceable condition, enabling safe, efficient travel, despite aging infrastructure and the impacts of weather.
- Maintaining remote gravel airports in Southwest Alaska, where freeze-thaw cycles cause uneven settlement of the runways, hindering and in some cases preventing commercial aircraft operations. Proper repair of these surfaces is beyond the capability of maintenance staff and must rely on deferred maintenance funds or federally funded projects.
- Reduction in the capital deferred maintenance program is causing growth of deferred maintenance needs, especially for pavement repair, vegetation control, and airport surface maintenance. If these needs are not addressed, it will result in the deterioration of roadway and airport infrastructure.
- Recruitment and retention of operators and foremen, especially in rural Alaska.
- Continued expansion of the transportation system in Anchorage and the Mat-Su Borough.
- Increasing cost of contracts for maintenance at 47 rural airports.
- Frequent need for response to severe weather events that threaten or damage transportation infrastructure. As braided rivers continue to erode their banks and steep mountainsides release landslides, immediate and unbudgeted action is required.
- Increases in security, documentation, and access control, as required by FAA and TSA at certificated airports.

Significant Changes in Results to be Delivered in FY2021

- The department will implement a new maintenance management system. The vendor for this system, AgileAssets, will provide fully integrated maintenance information to facilitate the region's ability to track expenses and adjust resource allocation to achieve efficiencies in maintenance operations.
- The closure of the Silvertip maintenance station will impact snow and ice control response time across the region. Winter snow and ice control will be managed using the department priority system, ensuring that roads and highways carrying the most traffic are the top priority. There could be times when priority III (major local or collector roads located in larger urban areas) and IV (minor local roads that provide access to residential or recreational areas) level roads become impassable.
- Develop new metrics for highway and airport activities to further evaluate and improve winter maintenance services.
- Execute a road maintenance exchange with the Kenai Borough, and transfer responsibility for some local roads to the borough in exchange for one high-priority collector. This will result in a net decrease of responsibility for 12.7 lane miles of low volume local roads. Additional exchanges are being pursued.

Statutory and Regulatory Authority

AS 02 Aeronautics
AS 19 Highways and Ferries
AS 30 Harbors and Shipping
AS 38 Motor Vehicles
AS 44 State Government
AAC 13 Public Safety
AAC 14 Public Works
AAC 17 DOT&PF
CFR 14 Aeronautics
CFR 23 Highways
CFR 49 Airport Security

Contact Information

Contact: Charles Wagner, Chief, Central Region Maintenance & Operations
Phone: (907) 269-0756
E-mail: charles.wagner@alaska.gov

Central Region Highways and Aviation Personal Services Information				
Authorized Positions			Personal Services Costs	
	FY2020 Management Plan	FY2021 Governor		
Full-time	162	162	Annual Salaries	11,428,491
Part-time	4	4	COLA	15,351
Nonpermanent	14	14	Premium Pay	1,494,750
			Annual Benefits	7,777,080
			<i>Less 3.28% Vacancy Factor</i>	<i>(679,372)</i>
			Lump Sum Premium Pay	0
Totals	180	180	Total Personal Services	20,036,300

Position Classification Summary					
Job Class Title	Anchorage	Fairbanks	Juneau	Others	Total
Accounting Technician II	0	0	0	2	2
Accounting Technician III	1	0	0	0	1
Administrative Assistant II	2	0	0	0	2
Administrative Officer II	1	0	0	0	1
Airport Operations Specialist	0	0	0	1	1
E/Op Jrny III	5	0	0	26	31
E/Op Subjrny I	4	0	0	10	14
Engineer/Architect I	1	0	0	0	1
Engineer/Architect IV	1	0	0	0	1
Env Imp Any III	1	0	0	0	1
Equipment Operator Foreman I	0	0	0	5	5
Equipment Operator Foreman II	1	0	0	1	2
Equipment Operator, Journey I	13	0	0	1	14
Equipment Operator, Journey II	25	0	0	54	79
Maint & OPS Mgr	1	0	0	0	1
Maint & OPS Sp	2	0	0	0	2
Maint & OPS Spr	2	0	0	2	4
Mts/EI Jrny II	3	0	0	4	7
Office Assistant II	2	0	0	5	7
Project Assistant	1	0	0	0	1
Rural Airport Foreman	0	0	0	2	2
S&E Spt Spec	1	0	0	0	1
Totals	67	0	0	113	180

Component Detail All Funds
Department of Transportation/Public Facilities

Component: Central Region Highways and Aviation (564)
RDU: Highways, Aviation and Facilities (408)

Non-Formula Component

	FY2019 Actuals	FY2020 Conference Committee	FY2020 Authorized	FY2020 Management Plan	FY2021 Governor	FY2020 Management Plan vs FY2021 Governor	
71000 Personal Services	20,506.7	19,693.9	19,693.9	19,166.9	20,036.3	869.4	4.5%
72000 Travel	103.4	26.0	6.2	90.0	90.0	0.0	0.0%
73000 Services	14,670.4	12,979.4	12,958.1	13,601.5	12,958.1	-643.4	-4.7%
74000 Commodities	6,535.3	8,602.8	8,602.8	8,402.6	8,770.1	367.5	4.4%
75000 Capital Outlay	558.4	5.0	5.0	5.0	5.0	0.0	0.0%
77000 Grants, Benefits	0.0	0.0	0.0	0.0	0.0	0.0	0.0%
78000 Miscellaneous	0.0	0.0	0.0	0.0	0.0	0.0	0.0%
Totals	42,374.2	41,307.1	41,266.0	41,266.0	41,859.5	593.5	1.4%
Fund Sources:							
1004 Gen Fund (UGF)	18,786.1	19,370.8	19,349.5	19,349.5	19,360.6	11.1	0.1%
1005 GF/Prgm (DGF)	348.9	354.8	354.8	354.8	612.2	257.4	72.5%
1007 I/A Rcpts (Other)	239.0	236.3	236.3	236.3	239.3	3.0	1.3%
1061 CIP Rcpts (Other)	5,404.7	4,142.6	4,123.0	4,123.0	4,193.1	70.1	1.7%
1108 Stat Desig (Other)	0.0	137.6	137.6	137.6	140.4	2.8	2.0%
1200 VehRntlTax (DGF)	4,999.2	4,999.2	4,999.2	4,999.2	4,999.2	0.0	0.0%
1214 WhitTunnel (Other)	0.0	0.0	0.0	0.0	55.0	55.0	100.0%
1239 AvFuel Tax (Other)	1,474.8	1,496.5	1,496.3	1,496.3	1,520.9	24.6	1.6%
1244 Rural Air (Other)	1,147.4	594.5	594.5	594.5	764.0	169.5	28.5%
1249 Motor Fuel (DGF)	9,974.1	9,974.8	9,974.8	9,974.8	9,974.8	0.0	0.0%
Unrestricted General (UGF)	18,786.1	19,370.8	19,349.5	19,349.5	19,360.6	11.1	0.1%
Designated General (DGF)	15,322.2	15,328.8	15,328.8	15,328.8	15,586.2	257.4	1.7%
Other Funds	8,265.9	6,607.5	6,587.7	6,587.7	6,912.7	325.0	4.9%
Federal Funds	0.0	0.0	0.0	0.0	0.0	0.0	0.0%
Positions:							
Permanent Full Time	167	167	167	162	162	0	0.0%
Permanent Part Time	4	4	4	4	4	0	0.0%
Non Permanent	14	14	14	14	14	0	0.0%

Change Record Detail - Multiple Scenarios with Descriptions
Department of Transportation/Public Facilities

Component: Central Region Highways and Aviation (564)
RDU: Highways, Aviation and Facilities (408)

Scenario/Change Record Title	Trans Type	Totals	Personal Services	Travel	Services	Commodities	Capital Outlay	Grants, Benefits	Miscellaneous	Positions		NP
										PFT	PPT	
***** Changes From FY2020 Conference Committee To FY2020 Authorized *****												
FY2020 Conference Committee												
	ConfCom	41,307.1	19,693.9	26.0	12,979.4	8,602.8	5.0	0.0	0.0	167	4	14
1004 Gen Fund		19,370.8										
1005 GF/Prgm		354.8										
1007 I/A Rcpts		236.3										
1061 CIP Rcpts		4,142.6										
1108 Stat Desig		137.6										
1200 VehRntlTax		4,999.2										
1239 AvFuel Tax		1,496.5										
1244 Rural Air		594.5										
1249 Motor Fuel		9,974.8										
Executive Branch 50% Travel Reduction												
	Veto	-19.8	0.0	-19.8	0.0	0.0	0.0	0.0	0.0	0	0	0
1061 CIP Rcpts		-19.6										
1239 AvFuel Tax		-0.2										
State agency travel budgets, not covered under the exemptions of public safety, health, and disaster management, were reduced 50% in the Governor's FY2020 budget. Veto action removes legislative increases to state travel. Agencies will rely on technology and management efficiencies to reduce the amount of state employee travel.												
The State's fiscal reality dictates a reduction in expenditures across all agencies.												
Reduce Cost of Rural Airport Maintenance												
	Veto	-21.3	0.0	0.0	-21.3	0.0	0.0	0.0	0.0	0	0	0
1004 Gen Fund		-21.3										
Reduce the cost of rural airport maintenance through divestiture or airport reclassification to backcountry. Ownership and/or management responsibility for some rural airports may be transferred to another entity.												
A variety of criteria will be utilized to determine the essential purpose and need for each airport including elements such as population served, alternate transportation modes available, education and healthcare access and federal grant obligations.												
Since 2009, the number of state-owned rural airports and seaplane bases has decreased from 256 to 237.												
The State's fiscal reality dictates a reduction in expenditures across all agencies.												
Reverse Cost of Rural Airport Maintenance Reduction												
	Inc	21.3	0.0	0.0	21.3	0.0	0.0	0.0	0.0	0	0	0
1004 Gen Fund		21.3										

Change Record Detail - Multiple Scenarios with Descriptions
Department of Transportation/Public Facilities

Component: Central Region Highways and Aviation (564)
RDU: Highways, Aviation and Facilities (408)

Scenario/Change Record Title	Trans Type	Totals	Personal Services	Travel	Services	Commodities	Capital Outlay	Grants, Benefits	Miscellaneous	Positions		NP
										PFT	PPT	
Legislative add-back appropriation made in Chapter 2, SSSLA2019, of HB2001.												
Reduce Cost of Rural Airport Maintenance												
1004 Gen Fund	Veto	-21.3	0.0	0.0	-21.3	0.0	0.0	0.0	0.0	0	0	0
Reduce the cost of rural airport maintenance through divestiture or airport reclassification to backcountry. Ownership and/or management responsibility for some rural airports may be transferred to another entity.												
A variety of criteria will be utilized to determine the essential purpose and need for each airport including elements such as population served, alternate transportation modes available, education and healthcare access and federal grant obligations.												
Since 2009, the number of state-owned rural airports and seaplane bases has decreased from 256 to 237.												
The State's fiscal reality dictates a reduction in expenditures across all agencies.												
Subtotal		41,266.0	19,693.9	6.2	12,958.1	8,602.8	5.0	0.0	0.0	167	4	14
***** Changes From FY2020 Authorized To FY2020 Management Plan *****												
Delete Positions to Align with Anticipated Workload												
	PosAdj	0.0	0.0	0.0	0.0	0.0	0.0	0.0	0.0	-5	0	0
Delete the following positions to align with anticipated workload, revenue, and expenditures:												
Full-time Equipment Operator Journey III/Lead (25-1005), range 52, located in Bethel												
Full-time Equipment Operator Journey III/Lead (25-1006), range 52, located in Bethel												
Full-time Equipment Operator Journey II (25-1013), range 53, located in Quartz Creek												
Full-time Equipment Operator Journey II (25-1126), range 53, located in Soldotna												
Full-time Engineering Assistant II (25-3803), range 19, located in Anchorage												
Align Authority with Anticipated Expenditures												
	LIT	0.0	-527.0	83.8	643.4	-200.2	0.0	0.0	0.0	0	0	0
Transfer authority from personal services and commodities to cover anticipated travel and services costs. The remaining personal services and commodities authority is sufficient to cover anticipated expenditures due to a reduction in staff.												
Subtotal		41,266.0	19,166.9	90.0	13,601.5	8,402.6	5.0	0.0	0.0	162	4	14
***** Changes From FY2020 Management Plan To FY2021 Governor *****												
Replace Funding Source to Align with Anticipated Revenue												
1004 Gen Fund	FndChg	-55.0	0.0	0.0	0.0	0.0	0.0	0.0	0.0	0	0	0

Change Record Detail - Multiple Scenarios with Descriptions
Department of Transportation/Public Facilities

Component: Central Region Highways and Aviation (564)
RDU: Highways, Aviation and Facilities (408)

Scenario/Change Record Title	Trans Type	Totals	Personal Services	Travel	Services	Commodities	Capital Outlay	Grants, Benefits	Miscellaneous	Positions		NP
										PFT	PPT	

1214 WhitTunnel		55.0										
-----------------	--	------	--	--	--	--	--	--	--	--	--	--

Replace unrestricted general funds with Whittier Tunnel toll receipt authority. The Whittier Tunnel represents approximately 10 percent of the total Central Region maintenance and operations program and should bear this portion of overhead salaries of the maintenance and operations chief, manager and administrative support staff. Based on current revenue projections, this fund source change is sustainable.

Add Authority for Highway Damages Collections

1005 GF/Prgm	Inc	251.1	0.0	0.0	0.0	251.1	0.0	0.0	0.0	0	0	0
--------------	-----	-------	-----	-----	-----	-------	-----	-----	-----	---	---	---

Add authority to receive and expend authority collections related to the repair of damaged state highway infrastructure. Over the last couple of years, the department has been more proactive in the collection of revenues to offset damages to state highway infrastructure such as guardrails, signs, light poles, and fences.

FY2021 Salary and Health Insurance Increases

1004 Gen Fund	SalAdj	226.9	342.4	0.0	0.0	0.0	0.0	0.0	0.0	0	0	0
1005 GF/Prgm		6.3										
1007 I/A Rcpts		3.0										
1061 CIP Rcpts		70.1										
1108 Stat Desig		2.8										
1239 AvFuel Tax		24.6										
1244 Rural Air		8.7										

FY2021 increase to LTC Health Insurance from \$1530 to \$1555 per member per month: \$318.1

FY2021 GGU Salary Increases: \$16.8

FY2021 increase to GGU Health Insurance from \$1530 to \$1555 per member per month: \$7.5

Replace Funding Source to Align with Anticipated Revenue

1004 Gen Fund	FndChg	-160.8	0.0	0.0	0.0	0.0	0.0	0.0	0.0	0	0	0
1244 Rural Air		160.8										

Replace unrestricted general funds with rural airport receipt authority. Based on current revenue projections, this fund source change is sustainable. A yearly evaluation of revenue and future projected revenue collections may warrant additional fund source swaps in the future.

Align Authority with Anticipated Expenditures

	LIT	0.0	527.0	0.0	-643.4	116.4	0.0	0.0	0.0	0	0	0
--	-----	-----	-------	-----	--------	-------	-----	-----	-----	---	---	---

Transfer authority from services to cover anticipated personal services and commodities costs. The remaining services authority is sufficient to cover anticipated

Change Record Detail - Multiple Scenarios with Descriptions
Department of Transportation/Public Facilities

Component: Central Region Highways and Aviation (564)

RDU: Highways, Aviation and Facilities (408)

Scenario/Change Record Title	Trans Type	Totals	Personal Services	Travel	Services	Commodities	Capital Outlay	Grants, Benefits	Miscellaneous	Positions		
										PFT	PPT	NP
expenditures.												
	Totals	41,859.5	20,036.3	90.0	12,958.1	8,770.1	5.0	0.0	0.0	162	4	14

Line Item Detail (1676)
Department of Transportation/Public Facilities
Travel

Component: Central Region Highways and Aviation (564)

Line Number	Line Name		FY2019 Actuals	FY2020 Management Plan	FY2021 Governor
2000	Travel		103.4	90.0	90.0
Object Class	Servicing Agency	Explanation	FY2019 Actuals	FY2020 Management Plan	FY2021 Governor
2000 Travel Detail Totals			103.4	90.0	90.0
2000	In-State Employee Travel	In-state travel to perform maintenance activities including roadway striping, bridge repair, and major repairs at locations off the contiguous highway system. Travel for personnel to support rural airports runway lighting repairs, airfield maintenance equipment repairs, and necessary inspections for the airports as well as contractor performance. Travel for training sessions for airport safety and security, airport rescue and firefighting (ARFF), and avalanche control. Travel for management to attend administrative meetings.	98.3	90.0	80.0
2002	Out of State Employee Travel	Trips to attend snow conferences and avalanche schooling and conferences for the Northwest area. Selected personnel may attend electrical seminars and bridge seminars.	5.1	0.0	10.0

Line Item Detail (1676)
Department of Transportation/Public Facilities
Services

Component: Central Region Highways and Aviation (564)

Line Number	Line Name		FY2019 Actuals	FY2020 Management Plan	FY2021 Governor
3000	Services		14,670.4	13,601.5	12,958.1
Object Class	Servicing Agency	Explanation	FY2019 Actuals	FY2020 Management Plan	FY2021 Governor
3000 Services Detail Totals			14,670.4	13,601.5	12,958.1
3000	Education Services	Conference registration, tuition, fees (excluding Information Technology related - see 3003).	64.3	60.0	60.0
3001	Financial Services	Insurance costs for rural airport contractor's liability insurance.	6.9	10.0	10.0
3003	Information Technology	Information Technology (IT) training, IT consulting, and IT equipment leases, software licensing and software maintenance.	14.6	15.0	15.0
3004	Telecommunications	Long distance, local phone service, and cellular service provided by vendors.	108.6	110.0	110.0
3005	Health Services	Drug and alcohol testing for Commercial Driver License (CDL) employees.	28.6	30.0	30.0
3006	Delivery Services	Postage, courier or freight charges.	114.3	115.0	115.0
3007	Advertising and Promotions	Advertising for maintenance contracts and public notices for load restrictions and road closures.	2.3	5.0	5.0
3008	Utilities	Electricity for street lights, highway lighting, airfield lighting, signal systems, thaw cable heating of airport maintenance equipment to allow starting during extreme cold. Electricity for some airport buildings tied into airport lighting meters.	2,348.8	1,693.3	2,016.7
3009	Structure/Infrastructure/Land	Rural airport contracts and	1,755.1	1,674.0	1,674.0

Line Item Detail (1676)
Department of Transportation/Public Facilities
Services

Component: Central Region Highways and Aviation (564)

Object Class	Servicing Agency	Explanation	FY2019 Actuals	FY2020 Management Plan	FY2021 Governor
3000 Services Detail Totals			14,670.4	13,601.5	12,958.1
		numerous inspections including: electrical, runway sand, vacuum trucks, and other miscellaneous inspections.			
3010	Equipment/Machinery	Rental or lease of backhoes, bridge repair equipment, survey and gravel screening equipment, specialized tools and machinery equipment. Repairs and maintenance of equipment such as generators, welders, drill presses, pumps, chain saws, chain hoists, and vehicles not maintained by State Equipment Fleet.	154.1	160.0	160.0
3011	Other Services	Enforcement of Clean Water Act - Environmental Protection Agency (EPA) MS4 requirements mandated National Pollutant Discharge Elimination System (NPDES) street sweeping, drain cleaning, and permit fees to the Municipality of Anchorage. Laundry services per union contract, copying/printing and other miscellaneous services.	2,247.0	2,250.0	2,149.0
3015	Inter-Agency Conservation/Environmental	Central Region Preliminary Design and Engineering Support to Central Region Highways and Aviation component.	16.7	20.0	20.0
3017	Inter-Agency Information Technology Non-Telecommunications	Admin - Department-wide Computer services provided by Department of Administration Enterprise Technology Services, such as central server, data storage, printing, network services, open connect, and task order system.	97.9	100.0	100.0
3018	Inter-Agency Information Technology	Admin - Department-wide Telecommunications services	28.4	30.0	30.0

Line Item Detail (1676)
Department of Transportation/Public Facilities
Services

Component: Central Region Highways and Aviation (564)

Object Class	Servicing Agency	Explanation	FY2019 Actuals	FY2020 Management Plan	FY2021 Governor
3000 Services Detail Totals			14,670.4	13,601.5	12,958.1
Telecommunications		provided by the Department of Administration, Enterprise Technology Services, such as basic telephone services, equipment and features, dedicated voice/data line service, statewide paging, two-way radio, and video conferencing.			
3021 Inter-Agency Mail	Admin - Department-wide	Chargeback fees for central mail services such as mailing vendor payments and payroll warrants.	1.1	1.0	1.0
3023 Inter-Agency Building Leases	PubSaf - Department-wide	Sub-Lease housing from the Troopers for Maintenance and Operations employees on alternate workweek schedules at the Bethel Airport.	36.0	40.0	40.0
3024 Inter-Agency Legal	Law - Department-wide	Legal services provided by the Department of Law.	29.6	30.0	30.0
3026 Inter-Agency Insurance	Admin - Department-wide	Liability insurance at our rural airports.	31.8	47.0	47.0
3027 Inter-Agency Financial	Admin - Department-wide	Chargeback fees for AKPAY/IRIS/ALDER.	75.1	75.1	75.1
3028 Inter-Agency Americans with Disabilities Act Compliance	Admin - Department-wide	Chargeback fees for the statewide coordinator for the Americans with Disabilities Act (ADA).	1.3	0.5	0.5
3031 Inter-Agency Construction	Trans - SW Design & Engineering Svcs (2357)	Survey Instrument Lab equipment fees.	6.2	6.2	6.2
3035 Inter-Agency Other Equipment/Machinery	Trans - Central Design & Eng Svcs (2298)	Reimbursable Service Agreement (RSA) with Aviation Design to provide sign plan for Maintenance and Operations Certified Airports (\$2.5), RSA for Environmental support (\$12.5).	2.6	3.0	3.0
3037 State Equipment Fleet	Trans - State Equipment Fleet (2791)	State Equipment Fleet Fuel A87	288.7	290.0	250.0

Line Item Detail (1676)
Department of Transportation/Public Facilities
Services

Component: Central Region Highways and Aviation (564)

Object Class	Servicing Agency	Explanation	FY2019 Actuals	FY2020 Management Plan	FY2021 Governor
3000 Services Detail Totals			14,670.4	13,601.5	12,958.1
		Allowed Fuel purchased with a state credit card. Budget: 88,668 gallons @ \$2.86 per gallon = \$253.7			
3037	State Equipment Fleet	Trans - State Equipment Fleet (2791)	7,205.1	6,825.8	6,000.0
		Operating and replacement fees for approximately 1,151 assets. This also includes SEF billable service repairs. See AC 3037 for vehicle fuel that is purchased with a state credit card.			
3038	Inter-Agency Management/Consulting	Admin - Department-wide	2.3	3.0	3.0
		Shared Services of Alaska accounts payable and travel and expense activities.			
3038	Inter-Agency Management/Consulting	Trans - Central Construction & CIP (2293)	3.0	7.6	7.6
		Reimbursable services agreement to Central Region Construction and capital improvement project support for professional technical support in reviewing Maintenance and Operation contracts.			

Line Item Detail (1676)
Department of Transportation/Public Facilities
Commodities

Component: Central Region Highways and Aviation (564)

Line Number	Line Name		FY2019 Actuals	FY2020 Management Plan	FY2021 Governor
4000	Commodities		6,535.3	8,402.6	8,770.1
Object Class	Servicing Agency	Explanation	FY2019 Actuals	FY2020 Management Plan	FY2021 Governor
4000 Commodities Detail Totals			6,535.3	8,402.6	8,770.1
4000	Business	General office supplies including pens/pencils, paper, stationery, tape, binders, forms, film, furniture, diskettes, cables, and other related data processing supplies and training supplies.	110.4	106.0	125.1
4001	Agricultural	Seed and fertilizer to establish and maintain ground cover at state airports and along state highways for erosion control.	0.1	1.0	1.0
4002	Household/Institutional	Protective clothing and supplies such as gloves, hip boots, hard hats, safety vests, safety glasses, and coveralls. Also includes absorbent towels, solvent, cleaners, floor sweep, barrels for used oil and hazardous waste storage, trash cans and other needed cleaning supplies.	7.0	10.0	10.0
4004	Safety	Firearms and ammunition used in avalanche and bird control, fire suppressant chemicals and other supplies for airport firefighting and rescue vehicles.	116.7	126.3	126.3
4005	Building Materials	Building materials, lumber for structural repairs, and fencing materials.	11.5	55.0	55.0
4006	Signs and Markers	Signs, school zone timers and markers to place along roadways,	159.5	337.0	337.0

Line Item Detail (1676)
Department of Transportation/Public Facilities
Commodities

Component: Central Region Highways and Aviation (564)

Object Class	Servicing Agency	Explanation	FY2019 Actuals	FY2020 Management Plan	FY2021 Governor
4000 Commodities Detail Totals			6,535.3	8,402.6	8,770.1
		runways, and airports.			
4007	Asphalt	Asphalt for road and runway repairs.	112.3	515.3	515.3
4008	Aggregate	Aggregate compounds such as gravel or slag used to form concrete.	45.1	50.0	50.0
4009	Guardrails	Guardrails.	58.0	60.0	60.0
4010	Culverts	Culverts.	17.0	20.0	20.0
4011	Electrical	Electrical parts, such as for repairing traffic signals.	76.2	80.0	80.0
4013	Lube Oils/Grease/Solvents	Lube oils and grease.	13.6	15.0	15.0
4014	Bottled Gas	Bottles gas, e.g. acetylene, oxygen, or other gas used for welding, etc.	9.0	30.0	30.0
4015	Parts and Supplies	Repair parts, chains, batteries, shop supplies, nuts, bolts, fasteners, fittings, metal stock, bench stock, and miscellaneous hardware used for repairs or maintenance.	627.7	525.6	675.0
4016	Paint/Preservatives	Traffic paint, beads and solvent for striping highways, airports and crosswalks.	78.8	100.0	100.0
4017	Sand	Sand for ice control and mixing with chemicals for better ice control on roadways.	733.0	1,268.2	1,197.8
4018	Surface Chemicals	Winter compounds for snow and ice removal from roads and runways.	2,687.2	2,803.2	3,072.6
4019	Small Tools/Minor Equipment	Small tools and minor equipment used for repairs or maintenance.	167.8	90.0	90.0
4020	Equipment Fuel	Bulk diesel fuel and unleaded gasoline for heavy equipment and vehicle usage.	1,504.4	2,210.0	2,210.0

Line Item Detail (1676)
Department of Transportation/Public Facilities
Capital Outlay

Component: Central Region Highways and Aviation (564)

Line Number	Line Name		FY2019 Actuals	FY2020 Management Plan	FY2021 Governor
5000	Capital Outlay		558.4	5.0	5.0
Object Class	Servicing Agency	Explanation	FY2019 Actuals	FY2020 Management Plan	FY2021 Governor
5000 Capital Outlay Detail Totals			558.4	5.0	5.0
5002	Structures and Infrastructure	Ninilchik Salt Shed Building.	293.2	0.0	0.0
5004	Equipment	Equipment purchases and brine boss upgrades.	264.6	5.0	5.0
5999	DOT/PF Personal Services	T&E's incorrectly coded to 5999/should be personal services object 1000	0.6	0.0	0.0

Revenue Detail (1681)
Department of Transportation/Public Facilities

Component: Central Region Highways and Aviation (564)

Revenue Type (OMB Fund Code) Revenue Source	Component	Comment	FY2019 Actuals	FY2020 Management Plan	FY2021 Governor
5005 GF/Prgm (1005 GF/Prgm)			513.7	354.8	612.2
5103 Program Receipts - Charges for Services		Security Screening & Fingerprinting Fees - Collection of fees associated with providing clearance badges and security screening (fingerprinting and background checks), as necessary for homeland security at certificated rural airports.	48.3	44.0	48.9
5111 Program Receipts Transportation - Charges for Services		Highway Damages Recovered - Recovery of repair costs for damages done to state highway fixtures such as guardrails, signs, fences, light poles and bridge structures.	465.4	310.8	563.3
5007 I/A Rcpts (1007 I/A Rcpts)			239.0	236.3	239.3
5301 Inter-Agency Receipts	Trans - Statewide Aviation (1811)	Reimbursement from state agency's budget for services provided.	10.0	15.0	15.0
5301 Inter-Agency Receipts	Trans - Whittier Access and Tunnel (2510)	Reimbursable service agreement with Whittier Access & Tunnel - Equipment Operators out of Girdwood provide snow plowing, snow removal, grading and spring maintenance in and around the Whittier Tunnel.	196.6	201.3	204.3
5301 Inter-Agency Receipts	NatRes - Department-wide	Reimbursement from state agency's budget for providing equipment and personnel support to Department of Natural Resources Fire Suppression.	32.4	20.0	20.0
5061 CIP Rcpts (1061 CIP Rcpts)			5,404.7	4,123.0	4,193.1
5351 Capital Improvement Project Inter-Agency		Capital improvement project receipts for work in direct support of capital projects.	5,281.2	3,677.4	3,745.0
5351 Capital Improvement Project		Recovery of indirect costs from the	123.5	445.6	448.1

Revenue Detail (1681)
Department of Transportation/Public Facilities

Component: Central Region Highways and Aviation (564)

Revenue Type (OMB Fund Code) Revenue Source	Component	Comment	FY2019 Actuals	FY2020 Management Plan	FY2021 Governor
Inter-Agency		capital budget via the department's Indirect Cost Allocation Plan (ICAP).			
5108 Stat Desig (1108 Stat Desig)			0.0	137.6	140.4
5206 Statutory Designated Program Receipts - Contracts		Reimbursement from non-state and non-federal entities under contractual agreements requesting DOT&PF to provide maintenance services such as after-hours airport call outs and plowing open roads during winter months. Reimbursement is based on actual cost. AS 37.05.146(b)(3) defines contract reimbursements as a non-general fund source (Statutory Designated Program Receipts).	0.0	137.6	140.4
5214 WhitTunnel (1214 WhitTunnel)			0.0	0.0	55.0
5407 Whittier Tunnel Toll Receipts		Tolls collected for the use of Whittier Tunnel. Special language in the operating bill allows Whittier Tunnel Toll receipts to carry forward into the following fiscal year if not used in the fiscal year collected.	0.0	0.0	55.0
5244 AirptLease (1244 Rural Air)			1,147.4	594.5	764.0
5244 Rural Airport Lease Receipts		Revenue distributed from the department's rural airport leasing program operated by the Statewide Aviation component under various sections of the Alaska Aeronautic Act including AS 02.15.090 and Title 17 of the Alaska Administrative Code. AS 37.05.146(c)(68) defines	1,147.4	594.5	764.0

Revenue Detail (1681)
Department of Transportation/Public Facilities

Component: Central Region Highways and Aviation (564)

Revenue Type (OMB Fund Code) Revenue Source	Component	Comment	FY2019 Actuals	FY2020 Management Plan	FY2021 Governor
		charges, rentals, and fees for airport or air navigation facility contracts, leases and other arrangements as non-general fund program receipts.			
6004 Gen Fund (1004 Gen Fund)			3.3	0.0	0.0
6046 General Fund - Prior Year Reimbursement Recovery		Prior year reimbursement recovery.	3.3	0.0	0.0

Inter-Agency Services (1682)
Department of Transportation/Public Facilities

Component: Central Region Highways and Aviation (564)

				FY2019 Actuals	FY2020 Management Plan	FY2021 Governor
Component Totals				7,809.1	7,459.2	6,593.4
With Department of Administration				237.9	256.6	256.6
With Department of Public Safety				36.0	40.0	40.0
With Department of Law				29.6	30.0	30.0
With Department of Transportation/Public Facilities				7,505.6	7,132.6	6,266.8
Object Class	Servicing Agency	Explanation		FY2019 Actuals	FY2020 Management Plan	FY2021 Governor
3017	Inter-Agency Information Technology Non-Telecommunications	Admin - Department-wide	Computer services provided by Department of Administration Enterprise Technology Services, such as central server, data storage, printing, network services, open connect, and task order system.	97.9	100.0	100.0
3018	Inter-Agency Information Technology Telecommunications	Admin - Department-wide	Telecommunications services provided by the Department of Administration, Enterprise Technology Services, such as basic telephone services, equipment and features, dedicated voice/data line service, statewide paging, two-way radio, and video conferencing.	28.4	30.0	30.0
3021	Inter-Agency Mail	Admin - Department-wide	Chargeback fees for central mail services such as mailing vendor payments and payroll warrants.	1.1	1.0	1.0
3023	Inter-Agency Building Leases	PubSaf - Department-wide	Sub-Lease housing from the Troopers for Maintenance and Operations employees on alternate workweek schedules at the Bethel Airport.	36.0	40.0	40.0
3024	Inter-Agency Legal	Law - Department-wide	Legal services provided by the Department of Law.	29.6	30.0	30.0
3026	Inter-Agency Insurance	Admin - Department-wide	Liability insurance at our rural airports.	31.8	47.0	47.0

Inter-Agency Services (1682)
Department of Transportation/Public Facilities

Component: Central Region Highways and Aviation (564)

Object Class	Servicing Agency	Explanation	FY2019 Actuals	FY2020 Management Plan	FY2021 Governor
3027 Inter-Agency Financial	Admin - Department-wide	Chargeback fees for AKPAY/IRIS/ALDER.	75.1	75.1	75.1
3028 Inter-Agency Americans with Disabilities Act Compliance	Admin - Department-wide	Chargeback fees for the statewide coordinator for the Americans with Disabilities Act (ADA).	1.3	0.5	0.5
3031 Inter-Agency Construction	Trans - SW Design & Engineering Svcs (2357)	Survey Instrument Lab equipment fees.	6.2	6.2	6.2
3035 Inter-Agency Other Equipment/Machinery	Trans - Central Design & Eng Svcs (2298)	Reimbursable Service Agreement (RSA) with Aviation Design to provide sign plan for Maintenance and Operations Certified Airports (\$2.5), RSA for Environmental support (\$12.5).	2.6	3.0	3.0
3037 State Equipment Fleet	Trans - State Equipment Fleet (2791)	State Equipment Fleet Fuel A87 Allowed Fuel purchased with a state credit card. Budget: 88,668 gallons @ \$2.86 per gallon = \$253.7	288.7	290.0	250.0
3037 State Equipment Fleet	Trans - State Equipment Fleet (2791)	Operating and replacement fees for approximately 1,151 assets. This also includes SEF billable service repairs. See AC 3037 for vehicle fuel that is purchased with a state credit card.	7,205.1	6,825.8	6,000.0
3038 Inter-Agency Management/Consulting	Admin - Department-wide	Shared Services of Alaska accounts payable and travel and expense activities.	2.3	3.0	3.0
3038 Inter-Agency Management/Consulting	Trans - Central Construction & CIP (2293)	Reimbursable services agreement to Central Region Construction and capital improvement project support for professional technical support in reviewing Maintenance and Operation contracts.	3.0	7.6	7.6

Personal Services Expenditure Detail
Department of Transportation/Public Facilities

Scenario: FY2021 Governor (16414)
Component: Central Region Highways and Aviation (564)
RDU: Highways, Aviation and Facilities (408)

PCN	Job Class Title	Time Status	Retire Code	Barg Unit	Location	Salary Sched	Range / Step	Comp Months	Split / Count	Annual Salaries	COLA	Premium Pay	Annual Benefits	Total Costs	UGF Amount
25-0256	Project Assistant	FT	A	GP	Anchorage	200	16G / J	12.0		64,245	960	5,839	44,749	115,793	92,829
25-0549	Mts/EI Jrny II	FT	A	LL	Palmer	2BB	51J / K	12.0		71,521	0	12,528	49,818	133,867	62,441
25-0565	Mts/EI Jrny II	FT	A	LL	Soldotna	2CC	51C / D	12.0		63,421	0	8,874	45,464	117,759	46,543
25-0569	Office Assistant II	FT	A	GP	Homer	200	10F / G	12.0		40,863	560	0	33,926	75,349	64,047
25-0697	Engineer/Architect I	FT	A	GP	Anchorage	200	22B / C	12.0		82,374	1,129	0	49,302	132,805	55,387
25-0935	Office Assistant II	FT	A	GP	Palmer	200	10L	12.0		46,440	636	0	35,992	83,068	66,454
25-0974	Maint & OPS Spr	FT	A	SS	Anchorage	200	21L / M	12.0		103,012	0	0	56,986	159,998	70,299
25-0977	Maint & OPS Spr	FT	A	SS	Soldotna	2S2	21P	12.0		122,075	0	0	64,047	186,122	163,787
25-0979	Accounting Technician II	FT	A	GP	Palmer	200	14L	12.0		60,972	836	0	41,374	103,182	87,705
25-0980	Office Assistant II	FT	A	GP	Anchorage	200	10M / N	12.0		49,143	673	0	36,993	86,809	73,788
25-0981	Maint & OPS Spr	FT	A	SS	Anchorage	200	21L / M	12.0		104,670	0	0	57,600	162,270	129,816
25-0982	Equipment Operator, Journey II	FT	A	LL	Anchorage	2AA	53E / F	12.0		57,757	0	10,162	43,843	111,762	57,234
25-0983	Office Assistant II	FT	A	GP	Soldotna	200	10C / D	12.0		37,788	518	0	32,787	71,093	60,429
25-0985	Equipment Operator, Journey II	FT	A	LL	Palmer	2BB	53D / E	12.0		55,740	0	9,993	43,034	108,767	20,699
25-0992	Maint & OPS Mgr	FT	A	SS	Anchorage	200	23P	12.0		135,533	0	0	69,032	204,565	134,467
25-0997	Equipment Operator, Journey II	FT	A	LL	Anchorage	2AA	53F	12.0		58,333	0	12,705	44,999	116,037	44,433
25-0998	Equipment Operator, Journey II	FT	A	LL	Soldotna	2CC	53O	12.0		74,678	0	13,573	51,374	139,625	104,719
25-1000	Equipment Operator Foreman I	FT	A	LL	Aniak	2JJ	51F / J	12.0		75,278	0	10,800	50,570	136,648	0
25-1003	Maint & OPS Sp	FT	A	GP	Anchorage	200	21K	12.0		95,124	1,304	0	54,024	150,452	135,407
25-1004	Rural Airport Foreman	FT	A	LL	Bethel	2II	49N	12.0		95,329	0	6,825	56,524	158,678	94,490
25-1007	Mts/EI Jrny II	FT	A	LL	Anchorage	2AA	51E / F	12.0		66,027	0	9,525	46,671	122,223	92,412
25-1008	Mts/EI Jrny II	FT	A	LL	Anchorage	2AA	51K	12.0		71,081	0	12,817	49,762	133,660	80,196
25-1009	Equipment Operator, Journey I	FT	A	LL	Anchorage	2AA	54D / E	12.0		51,990	0	11,129	42,066	105,185	68,370
25-1010	Accounting Technician II	FT	A	GG	Soldotna	200	14O	12.0		67,770	929	0	43,892	112,591	90,073
25-1012	Equipment Operator Foreman I	FT	A	LL	Soldotna	2CC	51O / P	12.0		84,823	0	12,162	54,610	151,595	121,276
25-1017	E/Op Jrny III	FT	A	LL	Homer	2CC	52C / D	12.0		59,237	0	10,503	44,518	114,258	0
25-1018	Equipment Operator, Journey II	FT	A	LL	North Kenai Camp	2CC	53K / L	12.0		66,011	0	11,766	47,495	125,272	100,218
25-1019	Equipment Operator, Journey II	FT	A	LL	Ninilchik	2CC	53B	12.0		52,759	0	9,589	41,780	104,128	88,509
25-1020	Equipment Operator, Journey II	FT	A	LL	Soldotna	2CC	53K / L	12.0		66,011	0	11,673	47,460	125,144	87,601

Note: If a position is split, an asterisk (*) will appear in the Split/Count column. If the split position is also counted in the component, two asterisks (**) will appear in this column. [No valid job title] appearing in the Job Class Title indicates that the PCN has an invalid class code or invalid range for the class code effective date of this scenario.

Personal Services Expenditure Detail
Department of Transportation/Public Facilities

Scenario: FY2021 Governor (16414)
Component: Central Region Highways and Aviation (564)
RDU: Highways, Aviation and Facilities (408)

PCN	Job Class Title	Time Status	Retire Code	Barg Unit	Location	Salary Sched	Range / Step	Comp Months	Split / Count	Annual Salaries	COLA	Premium Pay	Annual Benefits	Total Costs	UGF Amount
25-1021	Mts/EI Jrny II	FT	A	LL	Soldotna	2CC	51O	12.0		84,307	0	12,162	54,418	150,887	90,532
25-1022	Equipment Operator, Journey I	FT	A	LL	Bethel	2II	54B	12.0		55,567	0	8,016	42,237	105,820	79,365
25-1025	Equipment Operator, Journey II	FT	A	LL	Crown Point	2CC	53A / B	12.0		52,688	0	7,362	40,929	100,979	80,783
25-1026	E/Op Jrny III	FT	A	LL	Soldotna	2CC	52M / N	12.0		75,768	0	10,719	50,721	137,208	92,615
25-1030	Equipment Operator, Journey II	FT	A	LL	Anchorage	2AA	53M	12.0		67,566	0	12,280	48,261	128,107	96,080
25-1036	Administrative Assistant II	FT	A	GP	Anchorage	200	14J	12.0		57,192	784	0	39,974	97,950	78,360
25-1037	Equipment Operator, Journey II	FT	A	LL	Palmer	2BB	53C / D	12.0		54,342	0	9,736	42,421	106,499	79,874
25-1038	Rural Airport Foreman	FT	A	LL	Dillingham	2II	49F	12.0		80,626	0	0	48,550	129,176	34,246
25-1039	E/Op Jrny III	FT	A	LL	Dillingham	2II	52M / N	12.0		81,449	0	11,571	53,141	146,161	4,616
25-1041	Equipment Operator, Journey II	FT	A	LL	Crown Point	2CC	53F / J	12.0		61,743	0	8,697	44,777	115,217	86,413
25-1042	Equipment Operator, Journey II	FT	A	LL	Crown Point	2CC	53C / D	12.0		56,399	0	8,136	42,590	107,125	80,344
25-1044	Equipment Operator, Journey II	FT	A	LL	Girdwood	2AA	53D / E	12.0		55,002	0	7,854	41,968	104,824	48,335
25-1045	Equipment Operator, Journey II	FT	A	LL	Quartz Creek	2CC	53B / C	12.0		53,803	0	9,513	42,139	105,455	79,091
25-1046	Equipment Operator Foreman I	FT	A	LL	Palmer	2BB	51O	12.0		83,330	0	12,021	54,004	149,355	119,484
25-1047	Equipment Operator, Journey II	FT	A	LL	Palmer	2BB	53B / C	12.0		52,602	0	11,278	42,347	106,227	84,982
25-1048	Equipment Operator, Journey II	FT	A	LL	Palmer	2BB	53O / P	12.0		75,971	0	10,632	50,764	137,367	103,025
25-1050	Equipment Operator, Journey II	FT	A	LL	Chulitna	2CC	53M	12.0		69,521	0	10,029	48,152	127,702	102,162
25-1051	E/Op Jrny III	FT	A	LL	Dillingham	2II	52D / E	12.0		67,490	0	9,540	47,218	124,248	0
25-1052	Equipment Operator, Journey II	FT	A	LL	Palmer	2BB	53K / L	12.0		64,740	0	9,198	46,073	120,011	96,009
25-1053	Equipment Operator, Journey II	FT	A	LL	Palmer	2BB	53B / C	12.0		53,421	0	9,337	41,932	104,690	83,752
25-1055	E/Op Jrny III	FT	A	LL	Palmer	2BB	52O	12.0		78,838	0	11,373	52,100	142,311	106,733
25-1056	Equipment Operator, Journey II	FT	A	LL	Palmer	2BB	53O	12.0		73,701	0	13,290	50,908	137,899	110,319
25-1057	Equipment Operator, Journey II	FT	A	LL	Palmer	2BB	53F / J	12.0		59,401	0	12,919	45,474	117,794	94,235

Note: If a position is split, an asterisk (*) will appear in the Split/Count column. If the split position is also counted in the component, two asterisks (**) will appear in this column. [No valid job title] appearing in the Job Class Title indicates that the PCN has an invalid class code or invalid range for the class code effective date of this scenario.

Personal Services Expenditure Detail
Department of Transportation/Public Facilities

Scenario: FY2021 Governor (16414)
Component: Central Region Highways and Aviation (564)
RDU: Highways, Aviation and Facilities (408)

PCN	Job Class Title	Time Status	Retire Code	Barg Unit	Location	Salary Sched	Range / Step	Comp Months	Split / Count	Annual Salaries	COLA	Premium Pay	Annual Benefits	Total Costs	UGF Amount
25-1058	E/Op Jrny III	FT	A	LL	Homer	2CC	52L / M	12.0		72,121	0	10,341	49,230	131,692	105,354
25-1060	E/Op Jrny III	FT	A	LL	Homer	2CC	52B	12.0		56,336	0	8,127	42,563	107,026	0
25-1061	Equipment Operator, Journey II	FT	A	LL	Homer	2CC	53O	12.0		74,678	0	10,773	50,337	135,788	108,630
25-1062	Equipment Operator, Journey II	FT	A	LL	Homer	2CC	53F	12.0		60,288	0	10,957	45,075	116,320	93,056
25-1064	Equipment Operator, Journey II	FT	A	LL	Soldotna	2CC	53L	12.0		67,088	0	12,193	48,052	127,333	101,866
25-1065	Equipment Operator, Journey II	FT	A	LL	Homer	2CC	53E / F	12.0		58,724	0	10,598	44,363	113,685	90,948
25-1066	E/Op Jrny III	FT	A	LL	Homer	2CC	52K / L	12.0		70,426	0	2,593	45,733	118,752	0
25-1067	Equipment Operator, Journey II	FT	A	LL	Homer	2CC	53K	12.0		64,738	0	9,339	46,124	120,201	96,161
25-1068	E/Op Jrny III	FT	A	LL	Anchorage	2AA	52N / O	12.0		77,743	0	13,641	52,535	143,919	115,135
25-1070	Equipment Operator Foreman I	FT	A	LL	Palmer	2BB	51F / J	12.0		67,211	0	12,082	48,056	127,349	101,879
25-1071	Equipment Operator, Journey II	FT	A	LL	Anchorage	2AA	53N / O	12.0		71,850	0	10,113	49,045	131,008	104,806
25-1072	Equipment Operator, Journey II	FT	A	LL	Anchorage	2AA	53J / K	12.0		62,783	0	9,057	45,296	117,136	93,709
25-1073	Equipment Operator, Journey II	FT	A	LL	Anchorage	2AA	53F	12.0		58,333	0	8,415	43,410	110,158	88,126
25-1075	Equipment Operator, Journey I	FT	A	LL	Anchorage	2AA	54D / E	12.0		52,437	0	9,287	41,549	103,273	77,455
25-1076	Equipment Operator, Journey II	FT	A	LL	Soldotna	2CC	53J / K	12.0		64,643	0	9,012	45,968	119,623	95,698
25-1077	Equipment Operator, Journey II	FT	A	LL	Anchorage	2AA	53K	12.0		62,783	0	9,057	45,296	117,136	99,566
25-1078	Equipment Operator, Journey I	FT	A	LL	Anchorage	2AA	54A / B	12.0		47,706	0	6,882	38,906	93,494	79,251
25-1079	Equipment Operator, Journey I	FT	A	LL	Anchorage	2AA	54J	12.0		56,794	0	10,322	43,546	110,662	88,530
25-1080	Equipment Operator, Journey II	FT	A	LL	Silvertip	2CC	53F / J	12.0		61,197	0	10,871	45,380	117,448	99,831
25-1081	Equipment Operator, Journey I	FT	A	LL	Anchorage	2AA	54J / K	12.0		58,473	0	8,193	43,379	110,045	88,036
25-1082	Equipment Operator, Journey II	FT	A	LL	Anchorage	2AA	53P	12.0		75,448	0	10,884	50,664	136,996	109,597
25-1083	Equipment Operator,	FT	A	LL	Anchorage	2AA	53M / N	12.0		69,046	0	9,747	47,871	126,664	94,998

Note: If a position is split, an asterisk (*) will appear in the Split/Count column. If the split position is also counted in the component, two asterisks (**) will appear in this column. [No valid job title] appearing in the Job Class Title indicates that the PCN has an invalid class code or invalid range for the class code effective date of this scenario.

Personal Services Expenditure Detail
Department of Transportation/Public Facilities

Scenario: FY2021 Governor (16414)
Component: Central Region Highways and Aviation (564)
RDU: Highways, Aviation and Facilities (408)

PCN	Job Class Title	Time Status	Retire Code	Barg Unit	Location	Salary Sched	Range / Step	Comp Months	Split / Count	Annual Salaries	COLA	Premium Pay	Annual Benefits	Total Costs	UGF Amount
25-1084	Journey II Equipment Operator, Journey I	FT	A	LL	Anchorage	2AA	54B / C	12.0		48,330	0	8,670	39,799	96,799	77,439
25-1085	E/Op Jrny III	FT	A	LL	Bethel	2II	52C / D	12.0		65,720	0	6,825	45,557	118,102	0
25-1086	Equipment Operator, Journey I	FT	A	LL	Anchorage	2AA	54F / J	12.0		55,421	0	11,922	43,630	110,973	88,778
25-1087	Equipment Operator, Journey II	FT	A	LL	Dillingham	2II	53A / B	12.0		58,306	0	8,214	43,325	109,845	0
25-1088	E/Op Jrny III	FT	A	LL	Anchorage	2AA	52M	12.0		72,349	0	13,150	50,355	135,854	95,098
25-1089	Equipment Operator, Journey II	FT	A	LL	Anchorage	2AA	53N / O	12.0		71,959	0	12,741	50,059	134,759	107,807
25-1090	Equipment Operator Foreman II	FT	A	LL	Anchorage	2AA	50P	12.0		89,901	0	12,969	56,789	159,659	119,744
25-1091	Equipment Operator, Journey II	FT	A	LL	Seward	2CC	53N	12.0		72,058	0	13,097	50,228	135,383	121,845
25-1094	E/Op Jrny III	FT	A	LL	Seldovia	2CC	52P	12.0		82,726	0	11,934	53,748	148,408	133,567
25-1096	E/Op Jrny III	FT	A	LL	Girdwood	2AA	52O	12.0		77,860	0	11,232	51,686	140,778	77,428
25-1097	Equipment Operator, Journey II	FT	A	LL	Girdwood	2AA	53B	12.0		50,805	0	7,329	40,219	98,353	63,930
25-1098	Equipment Operator, Journey II	FT	A	LL	Girdwood	2AA	53B / C	12.0		51,848	0	7,329	40,605	99,782	69,847
25-1099	Equipment Operator, Journey II	FT	A	LL	Girdwood	2AA	53J	12.0		60,516	0	8,730	44,335	113,581	56,791
25-1100	E/Op Jrny III	FT	A	LL	Willow	2CC	52O	12.0		79,815	0	11,514	52,515	143,844	0
25-1101	Equipment Operator, Journey II	FT	A	LL	Willow	2CC	53M	12.0		69,521	0	12,536	49,080	131,137	111,467
25-1102	Mts/EI Jrny II	FT	A	LL	Palmer	2BB	51E / F	12.0		65,892	0	11,681	47,419	124,992	99,994
25-1103	Equipment Operator, Journey II	FT	A	LL	Willow	2CC	53O	12.0		74,678	0	10,773	50,337	135,788	115,420
25-1104	E/Op Jrny III	FT	A	LL	Chulitna	2CC	52J / K	12.0		68,559	0	12,033	48,538	129,130	96,848
25-1105	Equipment Operator, Journey II	FT	A	LL	Palmer	2BB	53L	12.0		66,110	0	11,921	47,589	125,620	100,496
25-1106	Equipment Operator, Journey II	FT	A	LL	Talkeetna	2CC	53B / C	12.0		54,101	0	9,513	42,249	105,863	84,690
25-1107	Equipment Operator, Journey II	FT	A	LL	Chulitna	2CC	53L	12.0		67,088	0	12,097	48,016	127,201	101,761
25-1108	Equipment Operator, Journey II	FT	A	LL	Chulitna	2CC	53L / M	12.0		69,116	0	12,097	48,768	129,981	110,484
25-1109	E/Op Jrny III	FT	A	LL	Cascade	2CC	52L / M	12.0		73,977	0	12,926	50,875	137,778	103,334

Note: If a position is split, an asterisk (*) will appear in the Split/Count column. If the split position is also counted in the component, two asterisks (**) will appear in this column.
 [No valid job title] appearing in the Job Class Title indicates that the PCN has an invalid class code or invalid range for the class code effective date of this scenario.

Personal Services Expenditure Detail
Department of Transportation/Public Facilities

Scenario: FY2021 Governor (16414)
Component: Central Region Highways and Aviation (564)
RDU: Highways, Aviation and Facilities (408)

PCN	Job Class Title	Time Status	Retire Code	Barg Unit	Location	Salary Sched	Range / Step	Comp Months	Split / Count	Annual Salaries	COLA	Premium Pay	Annual Benefits	Total Costs	UGF Amount
25-1110	Equipment Operator, Journey II	FT	A	LL	Cascade	2CC	53O	12.0		74,678	0	13,466	51,335	139,479	118,557
25-1111	Equipment Operator, Journey II	FT	A	LL	Cascade	2CC	53N / O	12.0		73,259	0	12,993	50,634	136,886	109,509
25-1112	Equipment Operator, Journey II	FT	A	LL	Cascade	2CC	53B / C	12.0		52,983	0	9,513	41,835	104,331	83,465
25-1115	E/Op Jrny III	FT	A	LL	North Kenai Camp	2CC	52L / M	12.0		73,103	0	10,341	49,594	133,038	106,430
25-1118	E/Op Jrny III	FT	A	LL	Seward	2CC	52O	12.0		79,815	0	11,514	52,515	143,844	115,075
25-1119	Equipment Operator, Journey II	FT	A	LL	Seward	2CC	53O	12.0		74,678	0	10,773	50,337	135,788	101,841
25-1120	Equipment Operator, Journey II	FT	A	LL	Soldotna	2CC	53O	12.0		74,678	0	13,573	51,374	139,625	111,700
25-1121	Equipment Operator, Journey II	FT	A	LL	Seward	2CC	53C / D	12.0		55,859	0	7,869	42,291	106,019	84,815
25-1122	E/Op Jrny III	FT	A	LL	Quartz Creek	2CC	52J / K	12.0		66,836	0	12,033	47,899	126,768	101,414
25-1123	Equipment Operator, Journey II	FT	A	LL	Anchorage	2AA	53O	12.0		72,724	0	10,491	49,509	132,724	106,179
25-1124	Equipment Operator, Journey II	FT	A	LL	Quartz Creek	2CC	53L	12.0		67,088	0	12,097	48,016	127,201	101,761
25-1127	E/Op Jrny III	FT	A	LL	Ninilchik	2CC	52J	12.0		66,734	0	9,627	46,970	123,331	98,665
25-1128	Equipment Operator, Journey II	FT	A	LL	Homer	2CC	53N	12.0		72,058	0	10,395	49,227	131,680	105,344
25-1129	Equipment Operator, Journey II	FT	A	LL	Palmer	2BB	53E / F	12.0		57,582	0	10,338	43,844	111,764	89,411
25-1130	Equipment Operator, Journey II	FT	A	LL	Ninilchik	2CC	53L	12.0		67,088	0	9,678	47,120	123,886	99,109
25-1133	E/Op Jrny III	FT	A	LL	Anchorage	2AA	52O	12.0		77,860	0	11,232	51,686	140,778	98,545
25-1134	Equipment Operator, Journey II	FT	A	LL	Anchorage	2AA	53D / E	12.0		56,118	0	11,858	43,865	111,841	89,473
25-1135	Equipment Operator, Journey I	FT	A	LL	Anchorage	2AA	54C / D	12.0		50,736	0	8,902	40,776	100,414	80,331
25-1136	Equipment Operator, Journey II	FT	A	LL	Anchorage	2AA	53L	12.0		65,133	0	11,745	47,162	124,040	74,424
25-1137	Equipment Operator, Journey II	FT	A	LL	Anchorage	2AA	53F / J	12.0		59,334	0	12,705	45,370	117,409	91,154
25-1138	Equipment Operator, Journey II	FT	A	LL	Anchorage	2AA	53L	12.0		65,133	0	14,187	48,066	127,386	95,540
25-1141	Equipment Operator	FT	A	LL	Homer	2CC	50P	12.0		91,856	0	0	52,710	144,566	101,196

Note: If a position is split, an asterisk (*) will appear in the Split/Count column. If the split position is also counted in the component, two asterisks (**) will appear in this column. [No valid job title] appearing in the Job Class Title indicates that the PCN has an invalid class code or invalid range for the class code effective date of this scenario.

Personal Services Expenditure Detail
Department of Transportation/Public Facilities

Scenario: FY2021 Governor (16414)
Component: Central Region Highways and Aviation (564)
RDU: Highways, Aviation and Facilities (408)

PCN	Job Class Title	Time Status	Retire Code	Barg Unit	Location	Salary Sched	Range / Step	Comp Months	Split / Count	Annual Salaries	COLA	Premium Pay	Annual Benefits	Total Costs	UGF Amount
25-1142	Foreman II Equipment Operator, Journey II	FT	A	LL	Anchorage	2AA	53M	12.0		67,566	0	12,183	48,225	127,974	115,177
25-1143	E/Op Jrny III	FT	A	LL	Talkeetna	2CC	52L	12.0		71,684	0	12,926	50,026	134,636	0
25-1144	E/Op Jrny III	FT	A	LL	Dillingham	2II	52C / D	12.0		64,979	0	9,255	46,183	120,417	0
25-1145	E/Op Jrny III	FT	A	LL	Dillingham	2II	52D / E	12.0		67,150	0	9,540	47,092	123,782	92,837
25-1146	Equipment Operator, Journey II	FT	A	LL	Anchorage	2AA	53P	12.0		75,448	0	10,884	50,664	136,996	109,597
25-1150	Equipment Operator Foreman I	FT	A	LL	Mcgrath	2JJ	51M / N	12.0		86,901	0	12,312	55,435	154,648	0
25-1152	Equipment Operator, Journey II	FT	A	LL	Aniak	2JJ	53D / E	12.0		64,717	0	9,129	46,039	119,885	0
25-1153	Equipment Operator, Journey II	FT	A	LL	North Kenai Camp	2CC	53C / D	12.0		55,088	0	9,836	42,734	107,658	86,126
25-1156	Office Assistant II	FT	A	GP	Dillingham	237	10F / G	12.0		56,922	780	0	39,874	97,576	28,303
25-1161	Equipment Operator, Journey I	FT	A	LL	Anchorage	2AA	54C / D	12.0		50,520	0	7,122	40,037	97,679	78,143
25-1162	Equipment Operator, Journey II	FT	A	LL	Anchorage	2AA	53J	12.0		60,516	0	10,912	45,143	116,571	93,257
25-1165	Equipment Operator, Journey II	FT	A	LL	Palmer	2BB	53L	12.0		66,110	0	11,921	47,589	125,620	100,496
25-1166	Equipment Operator, Journey II	FT	A	LL	Palmer	2BB	53O	12.0		73,701	0	16,053	51,931	141,685	113,348
25-1167	Equipment Operator, Journey II	FT	A	LL	Willow	2CC	53F / J	12.0		61,743	0	10,871	45,583	118,197	100,468
25-1169	Administrative Assistant II	FT	A	GP	Anchorage	200	14G / J	12.0		55,944	767	0	39,512	96,223	81,790
25-1177	Equipment Operator, Journey II	FT	A	LL	Ninilchik	2CC	53F	12.0		60,288	0	10,871	45,044	116,203	92,962
25-1182	S&E Spt Spec	FT	A	GP	Anchorage	200	17G	12.0		67,584	926	0	43,823	112,333	112,333
25-1185	Office Assistant II	FT	A	GP	Bethel	250	10K	12.0		67,464	925	0	43,779	112,168	100,951
25-1187	Maint & OPS Spr	FT	A	SS	Palmer	200	21K	12.0		98,364	0	0	55,264	153,628	122,902
25-1207	Accounting Technician III	FT	A	GP	Anchorage	200	16A / B	12.0		53,184	729	0	38,490	92,403	73,922
25-1214	Office Assistant II	FT	A	GP	Anchorage	200	10B / C	12.0		36,638	502	0	32,361	69,501	62,551
25-1216	Administrative Officer II	FT	A	SS	Anchorage	200	19L	12.0		89,461	0	0	51,967	141,428	106,071
25-1217	Engineer/Architect IV	FT	A	SS	Anchorage	200	26M / N	12.0		144,934	0	0	72,015	216,949	170,184
25-3052	Equipment Operator, Journey II	FT	A	LL	Willow	2CC	53L / M	12.0		67,392	0	12,097	48,129	127,618	114,856
25-3429	Equipment Operator, Journey II	FT	A	LL	Soldotna	2CC	53M / N	12.0		71,318	0	15,143	50,711	137,172	109,738

Note: If a position is split, an asterisk (*) will appear in the Split/Count column. If the split position is also counted in the component, two asterisks (**) will appear in this column.
 [No valid job title] appearing in the Job Class Title indicates that the PCN has an invalid class code or invalid range for the class code effective date of this scenario.

Personal Services Expenditure Detail
Department of Transportation/Public Facilities

Scenario: FY2021 Governor (16414)
Component: Central Region Highways and Aviation (564)
RDU: Highways, Aviation and Facilities (408)

PCN	Job Class Title	Time Status	Retire Code	Barg Unit	Location	Salary Sched	Range / Step	Comp Months	Split / Count	Annual Salaries	COLA	Premium Pay	Annual Benefits	Total Costs	UGF Amount
25-3430	Equipment Operator, Journey II	FT	A	LL	Soldotna	2CC	53O	12.0		74,678	0	13,466	51,335	139,479	111,583
25-3431	Equipment Operator, Journey II	FT	A	LL	Quartz Creek	2CC	53K / L	12.0		64,934	0	14,100	47,960	126,994	101,595
25-3432	Equipment Operator, Journey II	FT	A	LL	Girdwood	2AA	53J / K	12.0		62,500	0	8,730	45,070	116,300	83,275
25-3433	Equipment Operator, Journey II	FT	A	LL	Girdwood	2AA	53J	12.0		60,516	0	10,912	45,143	116,571	88,351
25-3434	E/Op Jrny III	FT	A	LL	Anchorage	2AA	52M	12.0		72,349	0	10,437	49,350	132,136	105,709
25-3573	Airport Operations Specialist	FT	A	SS	Bethel	250	19J	12.0		125,268	0	0	65,230	190,498	0
25-3592	Maint & OPS Sp	FT	A	GP	Anchorage	200	21J / K	12.0		94,124	1,290	0	53,654	149,068	74,534
25-3639	E/Op Jrny III	FT	A	LL	Bethel	2II	52A / B	12.0		61,785	0	6,825	44,099	112,709	0
25-3649	Equipment Operator, Journey II	FT	A	LL	Chulitna	2CC	53B / C	12.0		54,250	0	11,416	43,009	108,675	76,073
25-3717	E/Op Jrny III	FT	A	LL	Dillingham	2II	52D / E	12.0		67,320	0	9,540	47,155	124,015	93,011
25-3773	Equipment Operator, Journey II	FT	A	LL	Girdwood	2AA	53B	12.0		50,805	0	9,161	40,898	100,864	85,734
25-3774	Equipment Operator, Journey II	FT	A	LL	Palmer	2BB	53B / C	12.0		53,272	0	9,337	41,877	104,486	88,813
25-3781	Env Imp Any III	FT	A	GP	Anchorage	200	19J	12.0		80,460	1,103	0	48,593	130,156	65,078
25-3782	Equipment Operator, Journey I	PT	A	LL	Anchorage	2AA	54F	6.0		27,368	0	5,922	21,674	54,964	43,971
25-3783	Equipment Operator, Journey I	PT	A	LL	Anchorage	2AA	54E	6.0		26,442	0	5,721	21,256	53,419	42,735
25-3785	Equipment Operator, Journey I	PT	A	LL	Anchorage	2AA	54B	6.0		23,853	0	5,161	20,090	49,104	39,283
25-3788	Equipment Operator, Journey I	PT	A	LL	Anchorage	2AA	54B	6.0		23,853	0	5,161	20,090	49,104	44,194
25-3802	Mts/EI Jrny II	FT	A	LL	Anchorage	2AA	51A / B	12.0		56,972	0	11,707	44,125	112,804	65,687
25-3811	E/Op Jrny III	FT	A	LL	Bethel	2II	52J	12.0		72,640	0	6,825	48,120	127,585	0
25-3812	E/Op Jrny III	FT	A	LL	Bethel	2II	52L	12.0		77,590	0	6,825	49,954	134,369	0
25-3813	E/Op Jrny III	FT	A	LL	Bethel	2II	52O	12.0		85,721	0	10,039	54,156	149,916	0
25-3814	E/Op Jrny III	FT	A	LL	Bethel	2II	52B	12.0		62,242	0	9,159	45,133	116,534	0
25-N09019	E/Op Subjrny I	NP	N	LL	Soldotna	2CC	58A	6.0		19,371	0	0	2,435	21,806	0
25-N09020	E/Op Subjrny I	NP	N	LL	Soldotna	2CC	58A	6.0		19,371	0	4,890	3,050	27,311	0
25-N09025	E/Op Subjrny I	NP	N	LL	Palmer	2BB	58A	6.0		18,904	0	0	2,376	21,280	0
25-N09026	E/Op Subjrny I	NP	N	LL	Palmer	2BB	58A	6.0		18,904	0	4,772	2,976	26,652	0
25-N09027	E/Op Subjrny I	NP	N	LL	Palmer	2BB	58A	6.0		18,904	0	4,772	2,976	26,652	0
25-N09028	E/Op Subjrny I	NP	N	LL	Palmer	2BB	58A	6.0		18,904	0	4,772	2,976	26,652	0

Note: If a position is split, an asterisk (*) will appear in the Split/Count column. If the split position is also counted in the component, two asterisks (**) will appear in this column. [No valid job title] appearing in the Job Class Title indicates that the PCN has an invalid class code or invalid range for the class code effective date of this scenario.

Personal Services Expenditure Detail
Department of Transportation/Public Facilities

Scenario: FY2021 Governor (16414)
Component: Central Region Highways and Aviation (564)
RDU: Highways, Aviation and Facilities (408)

PCN	Job Class Title	Time Status	Retire Code	Barg Unit	Location	Salary Sched	Range / Step	Comp Months	Split / Count	Annual Salaries	COLA	Premium Pay	Annual Benefits	Total Costs	UGF Amount
25-N09034	E/Op Subjrnly I	NP	N	LL	Soldotna	2CC	58A	6.0		19,371	0	4,890	3,050	27,311	0
25-N09035	E/Op Subjrnly I	NP	N	LL	Soldotna	2CC	58A	6.0		19,371	0	4,890	3,050	27,311	0
25-N09036	E/Op Subjrnly I	NP	N	LL	Soldotna	2CC	58A	6.0		19,371	0	4,890	3,050	27,311	0
25-N09037	E/Op Subjrnly I	NP	N	LL	Soldotna	2CC	58A	6.0		19,371	0	4,890	3,050	27,311	0
25-N10056	E/Op Subjrnly I	NP	N	LL	Anchorage	2AA	58A	6.0		18,446	0	0	2,319	20,765	0
25-N10057	E/Op Subjrnly I	NP	N	LL	Anchorage	2AA	58A	6.0		18,446	0	4,656	2,904	26,006	0
25-N10058	E/Op Subjrnly I	NP	N	LL	Anchorage	2AA	58A	6.0		18,446	0	0	2,319	20,765	0
25-N10059	E/Op Subjrnly I	NP	N	LL	Anchorage	2AA	58A	6.0		18,446	0	4,656	2,904	26,006	0
													Total Salary Costs:	11,428,491	
													Total COLA:	15,351	
													Total Premium Pay:	1,494,750	
													Total Benefits:	7,777,080	
													Total Pre-Vacancy:	20,715,672	
													Minus Vacancy Adjustment of 3.28%:	(679,372)	
													Total Post-Vacancy:	20,036,300	
													Plus Lump Sum Premium Pay:	0	
													Personal Services Line 100:	20,036,300	
Total Component Months:		2,052.0													

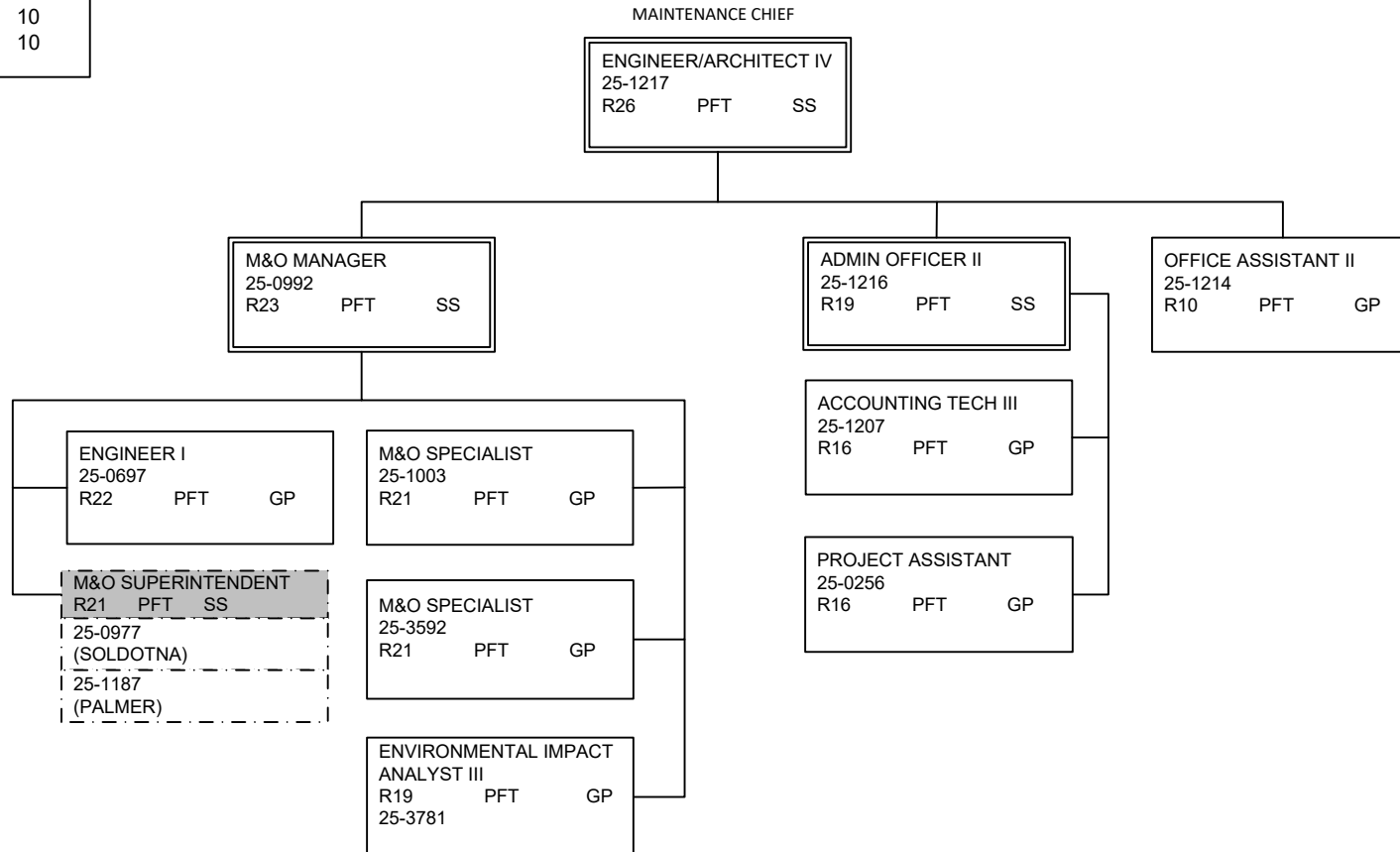
PCN Funding Sources:	Pre-Vacancy	Post-Vacancy	Percent
1004 General Fund Receipts	13,433,960	12,993,392	64.85%
1005 General Fund/Program Receipts	335,434	324,434	1.62%
1007 Interagency Receipts	137,294	132,792	0.66%
1039 U/A Indirect Cost Recovery	409,868	396,427	1.98%
1061 Capital Improvement Project Receipts	3,976,576	3,846,164	19.20%
1108 Statutory Designated Program Receipts	120,625	116,669	0.58%
1214 Whittier Tunnel Toll Receipts	56,901	55,035	0.27%
1239 Aviation Fuel Tax Revenue	1,572,447	1,520,879	7.59%
1244 Rural Airport Receipts	672,566	650,510	3.25%
Total PCN Funding:	20,715,672	20,036,300	100.00%

Note: If a position is split, an asterisk (*) will appear in the Split/Count column. If the split position is also counted in the component, two asterisks (**) will appear in this column. [No valid job title] appearing in the Job Class Title indicates that the PCN has an invalid class code or invalid range for the class code effective date of this scenario.

DEPARTMENT OF TRANSPORTATION AND PUBLIC FACILITIES
 RDU: HIGHWAYS, AVIATION AND FACILITIES
 COMPONENT: CENTRAL REGION HIGHWAYS & AVIATION (564)
 2021 GOVERNOR'S BUDGET

**MAINTENANCE &
 OPERATIONS
 ADMINISTRATION
 Anchorage**

COMPONENT TOTAL:	180
FULLTIME POSITIONS:	162
PARTTIME POSITIONS:	4
NONPERM POSITIONS:	14
PAGE TOTAL:	10
FULLTIME POSITIONS:	10

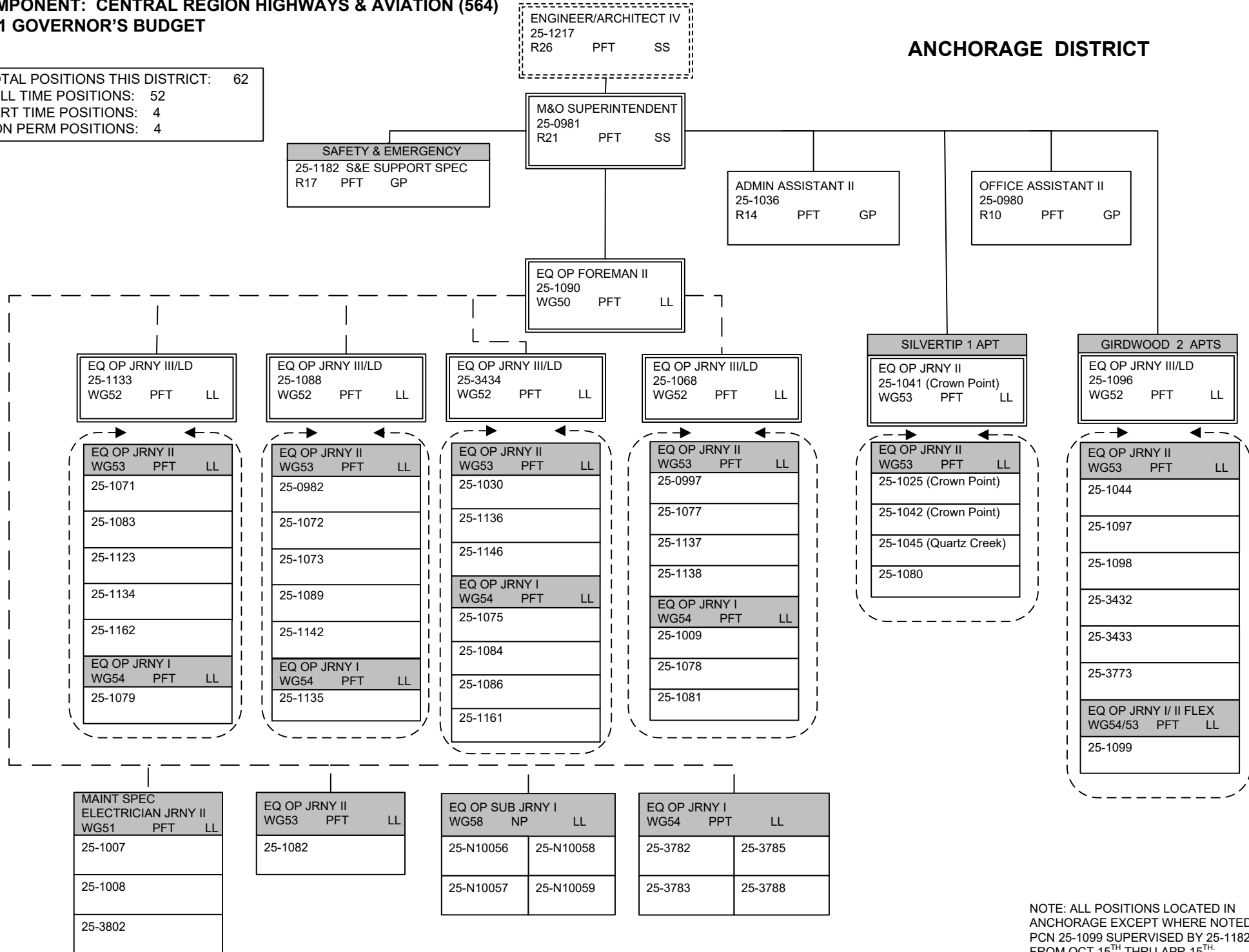


NOTE: ALL POSITIONS LOCATED IN ANCHORAGE EXCEPT WHERE NOTED.

**DEPARTMENT OF TRANSPORTATION AND PUBLIC FACILITIES
RDU: HIGHWAYS, AVIATION AND FACILITIES
COMPONENT: CENTRAL REGION HIGHWAYS & AVIATION (564)
2021 GOVERNOR'S BUDGET**

TOTAL POSITIONS THIS DISTRICT: 62
FULL TIME POSITIONS: 52
PART TIME POSITIONS: 4
NON PERM POSITIONS: 4

ANCHORAGE DISTRICT

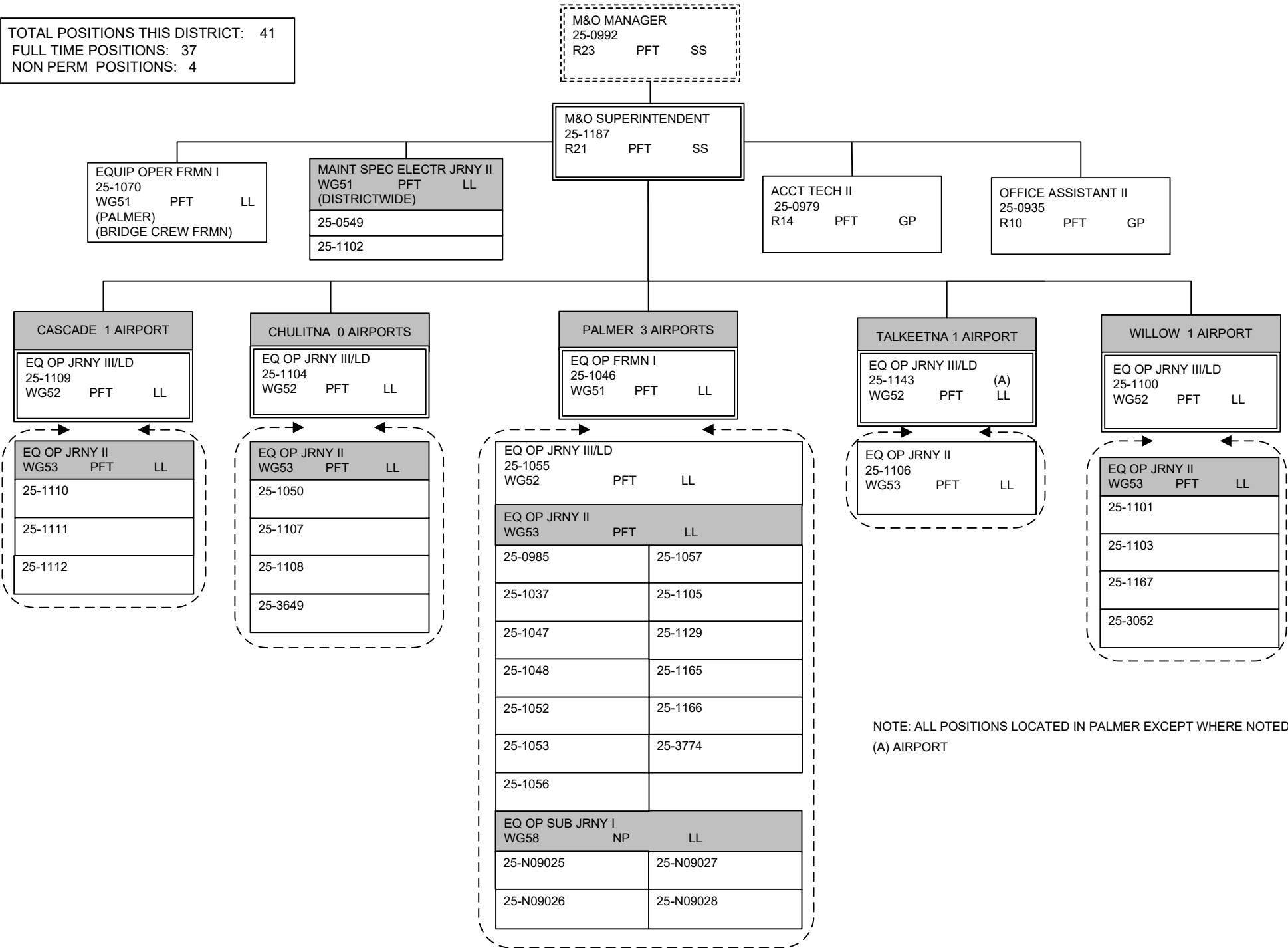


NOTE: ALL POSITIONS LOCATED IN ANCHORAGE EXCEPT WHERE NOTED. PCN 25-1099 SUPERVISED BY 25-1182 FROM OCT 15TH THRU APR 15TH.

DEPARTMENT OF TRANSPORTATION AND PUBLIC FACILITIES
RDU: HIGHWAYS, AVIATION AND FACILITIES
COMPONENT: CENTRAL REGION HIGHWAYS & AVIATION (564)
2021 GOVERNOR'S BUDGET

MATSU DISTRICT

TOTAL POSITIONS THIS DISTRICT: 41
 FULL TIME POSITIONS: 37
 NON PERM POSITIONS: 4



NOTE: ALL POSITIONS LOCATED IN PALMER EXCEPT WHERE NOTED.
 (A) AIRPORT

DEPARTMENT OF TRANSPORTATION AND PUBLIC FACILITIES
RDU: HIGHWAYS, AVIATION AND FACILITIES
COMPONENT: CENTRAL REGION HIGHWAYS & AVIATION (564)
2021 GOVERNOR'S BUDGET

PENINSULA DISTRICT

TOTAL POSITIONS THIS DISTRICT: 46
 FULL TIME POSITIONS: 40
 NON PERM POSITIONS: 6

M&O MANAGER
 25-0992
 R23 PFT SS

M&O SUPERINTENDENT
 25-0977
 R21 PFT SS

MTN SPEC ELECT JRNY II
 WG51 PFT LL
 (DISTRICTWIDE)
 25-0565
 25-1021

ACCT TECH II
 25-1010
 R14 PFT GG

OFFICE ASSISTANT II
 25-0983
 R10 PFT GP

HOMER 1 AIRPORT
 EQ OP FRMN II
 25-1141
 WG50 PFT LL

NINILCHIK 1 AIRPORT
 EQ OP JRNY III/LD
 25-1127
 WG52 PFT LL

SOLDOTNA 1 AIRPORT
 EQ OPER FRMN I
 25-1012
 WG51 PFT LL

NORTH KENAI
 EQ OP JRNY III/LD
 25-1115
 WG52 PFT LL

CROWN POINT (SEWARD) 3 AIRPORTS
 EQ OP JRNY III/LD
 WG52 PFT LL
 25-1118

OFFICE ASSIST II
 25-0569 R10 PFT GP

EQ OP JRNYIII/LD
 WG52 PFT LL
 25-1017 (A)
 25-1060 (A)
 25-1066 (A)

EQ OP JRNY II
 WG53 PFT LL
 25-1019
 25-1130
 25-1177

EQ OP JRNY III/LD
 25-1026 WG52 PFT LL

EQ OP JRNY II
 WG53 PFT LL
 25-0998 25-1120
 25-1020 25-3429
 25-1064 25-3430
 25-1076

EQ OP SUB JRNY I
 WG58 NP LL
 25-N09019 25-N09035
 25-N09020 25-N09036
 25-N09034 25-N09037

EQ OP JRNY II
 WG53 PFT LL
 25-1018
 25-1153

EQ OP JRNY II
 WG53 PFT LL
 25-1025 (Crown Point)
 25-1041 (Crown Point)
 25-1042 (Crown Point)
 25-1091
 25-1119
 25-1121

SELDOVIA 3 AIRPORTS
 EQ OP JRNY III/LD
 25-1094
 WG52 PFT LL

HOMER HIGHWAYS
 EQ OP JRNY III/LD
 25-1058
 WG52 PFT LL

QUARTZ CREEK 1 APT
 EQUIP OP JRNYIII/LD
 25-1122
 WG52 PFT LL

EQ OP JRNY II
 WG53 PFT LL
 25-1061 25-1067
 25-1062 25-1128
 25-1065

EQ OP JRNY II
 WG53 PFT LL
 25-1045
 25-1080
 25-1124
 25-3431

NOTE: ALL POSITIONS
 LOCATED IN
 SOLDOTNA EXCEPT
 WHERE NOTED.

SEASONAL CREW
 * Bridge Crew

(A) AIRPORT

DEPARTMENT OF TRANSPORTATION AND PUBLIC FACILITIES
 RDU: HIGHWAYS, AVIATION AND FACILITIES
 COMPONENT: CENTRAL REGION HIGHWAYS & AVIATION (564)
 2021 GOVERNOR'S BUDGET

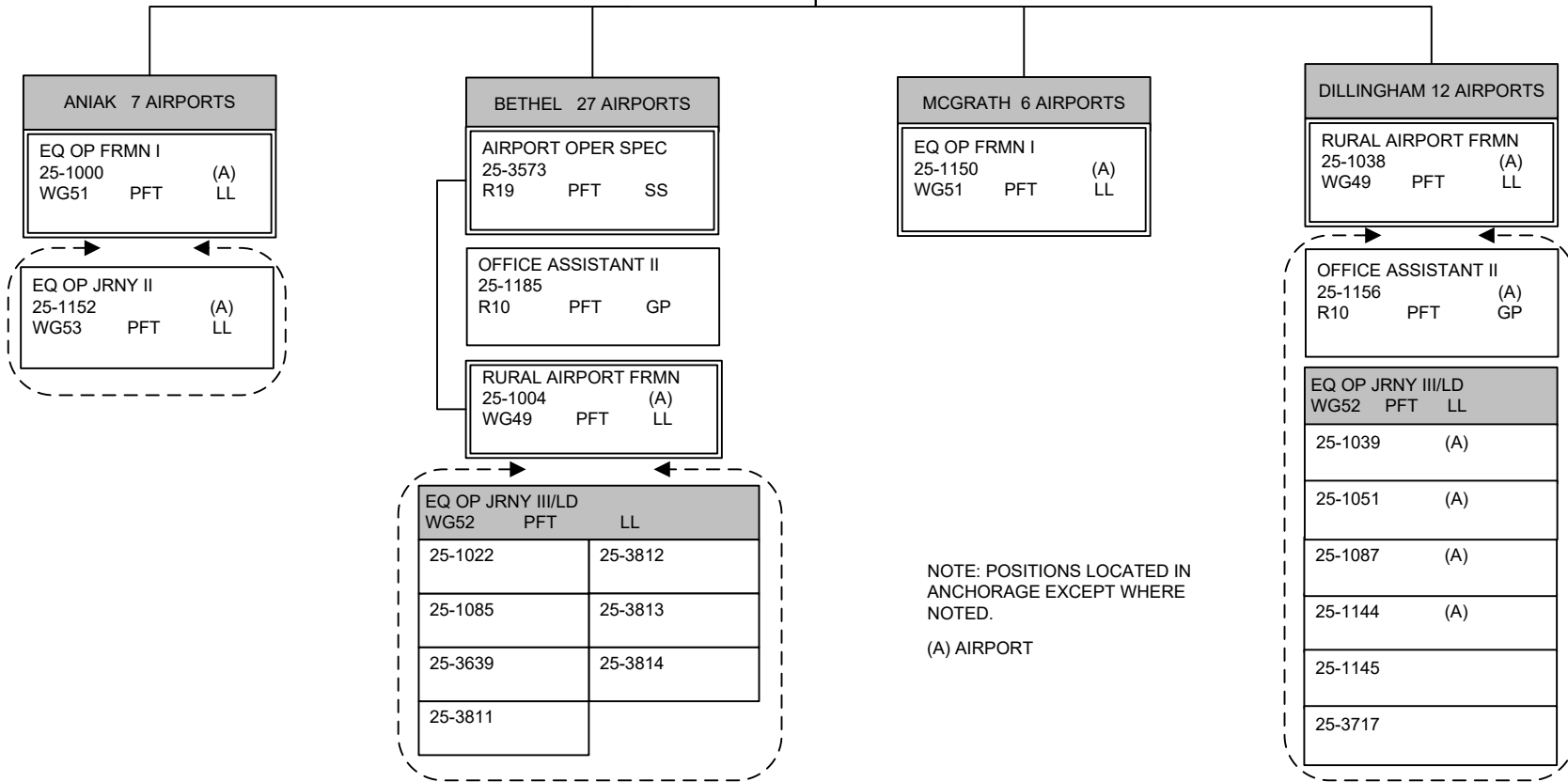
SOUTHWEST DISTRICT

TOTAL POSITIONS THIS DISTRICT 23
 FULL TIME POSITIONS 23

ENGINEER/ARCHITECT IV
 25-1217
 R26 PFT SS

M&O SUPERINTENDENT
 25-0974
 R21 PFT SS

ADMIN ASSISTANT II
 25-1169
 R14 PFT GP



NOTE: POSITIONS LOCATED IN ANCHORAGE EXCEPT WHERE NOTED.

(A) AIRPORT