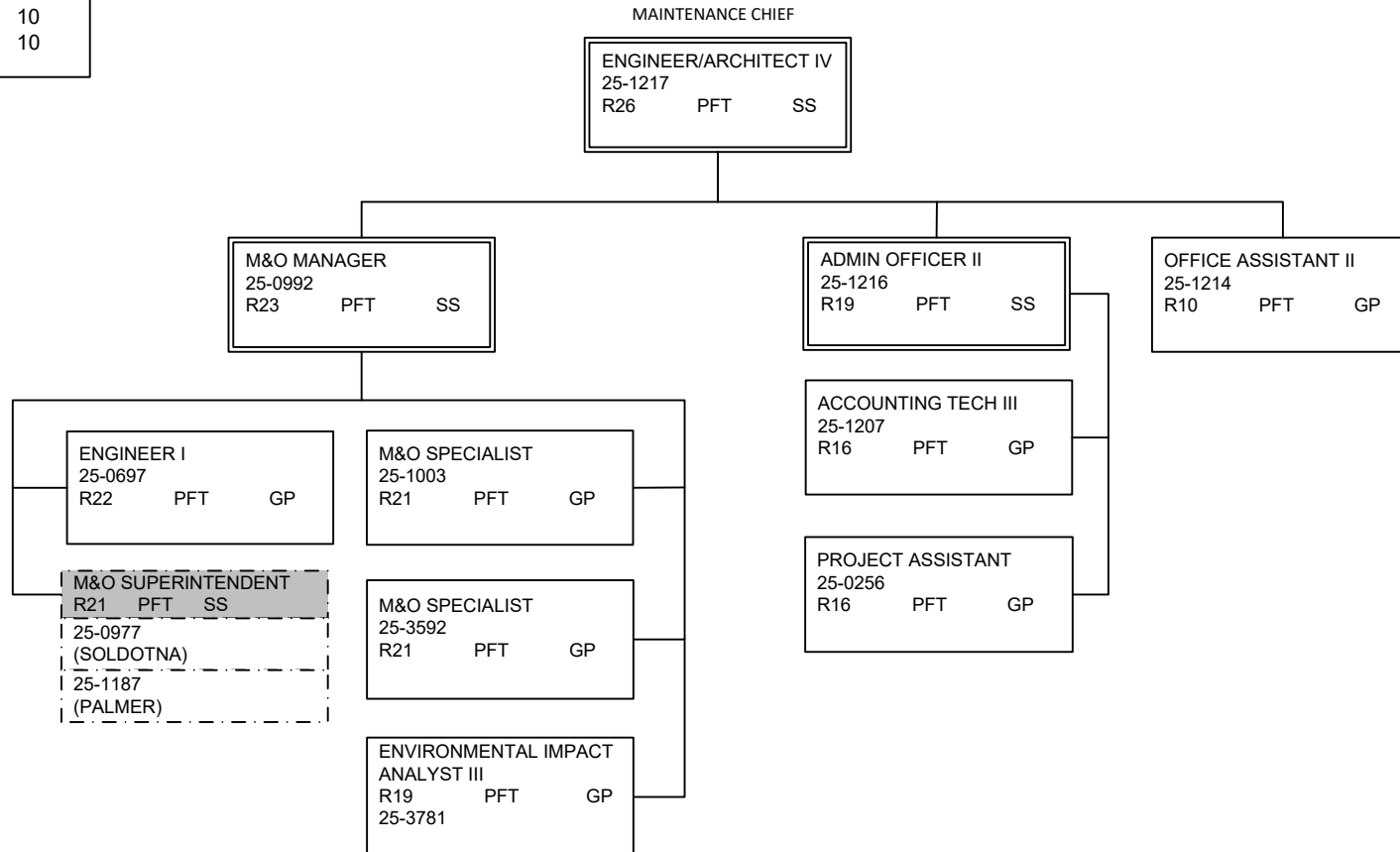


DEPARTMENT OF TRANSPORTATION AND PUBLIC FACILITIES
RDU: HIGHWAYS, AVIATION AND FACILITIES
COMPONENT: CENTRAL REGION HIGHWAYS & AVIATION (564)
2021 GOVERNOR'S BUDGET

MAINTENANCE &
OPERATIONS
ADMINISTRATION
Anchorage

COMPONENT TOTAL:	180
FULLTIME POSITIONS:	162
PARTTIME POSITIONS:	4
NONPERM POSITIONS:	14
PAGE TOTAL:	10
FULLTIME POSITIONS:	10

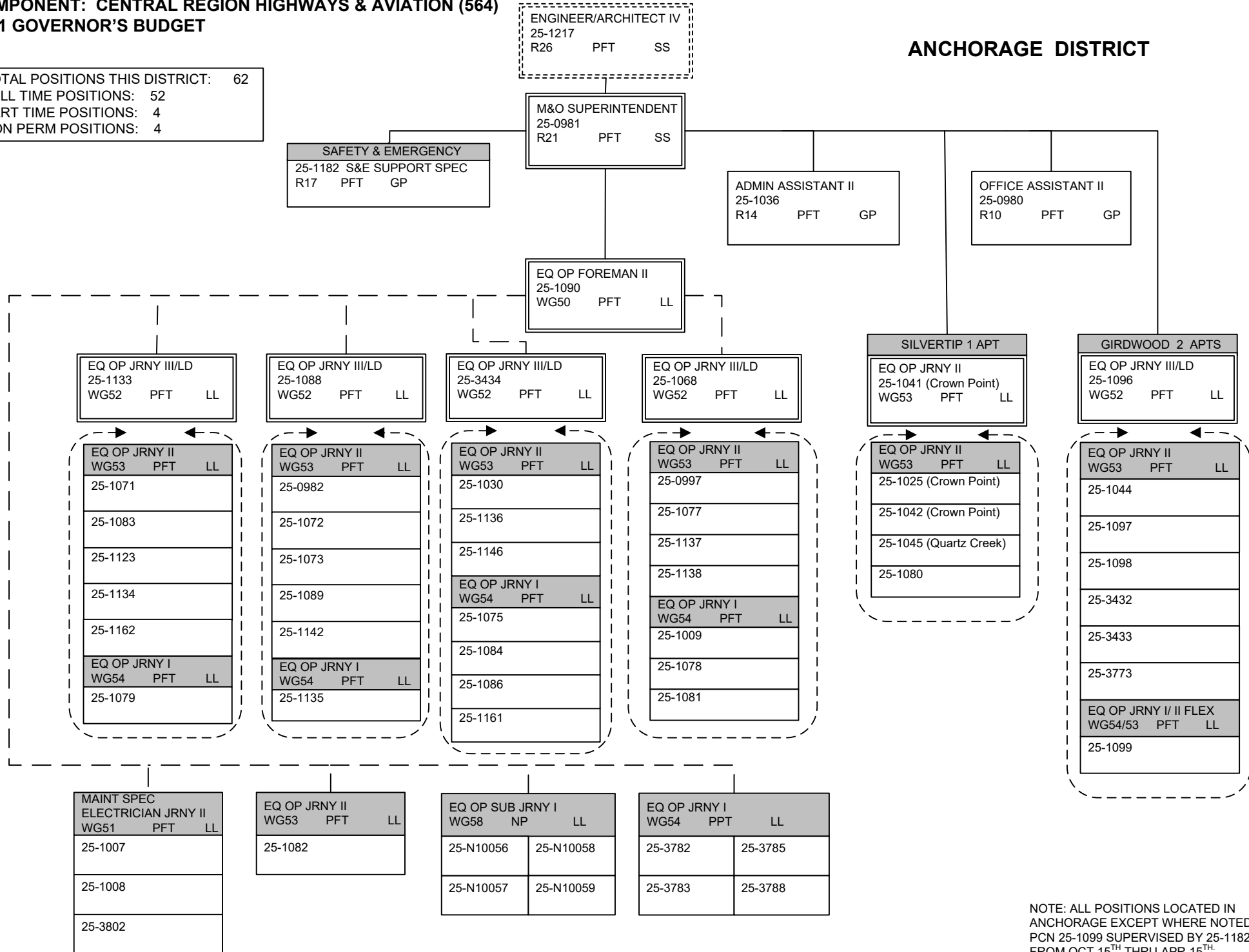


NOTE: ALL POSITIONS LOCATED IN ANCHORAGE EXCEPT WHERE NOTED.

**DEPARTMENT OF TRANSPORTATION AND PUBLIC FACILITIES
RDU: HIGHWAYS, AVIATION AND FACILITIES
COMPONENT: CENTRAL REGION HIGHWAYS & AVIATION (564)
2021 GOVERNOR'S BUDGET**

TOTAL POSITIONS THIS DISTRICT: 62
FULL TIME POSITIONS: 52
PART TIME POSITIONS: 4
NON PERM POSITIONS: 4

ANCHORAGE DISTRICT

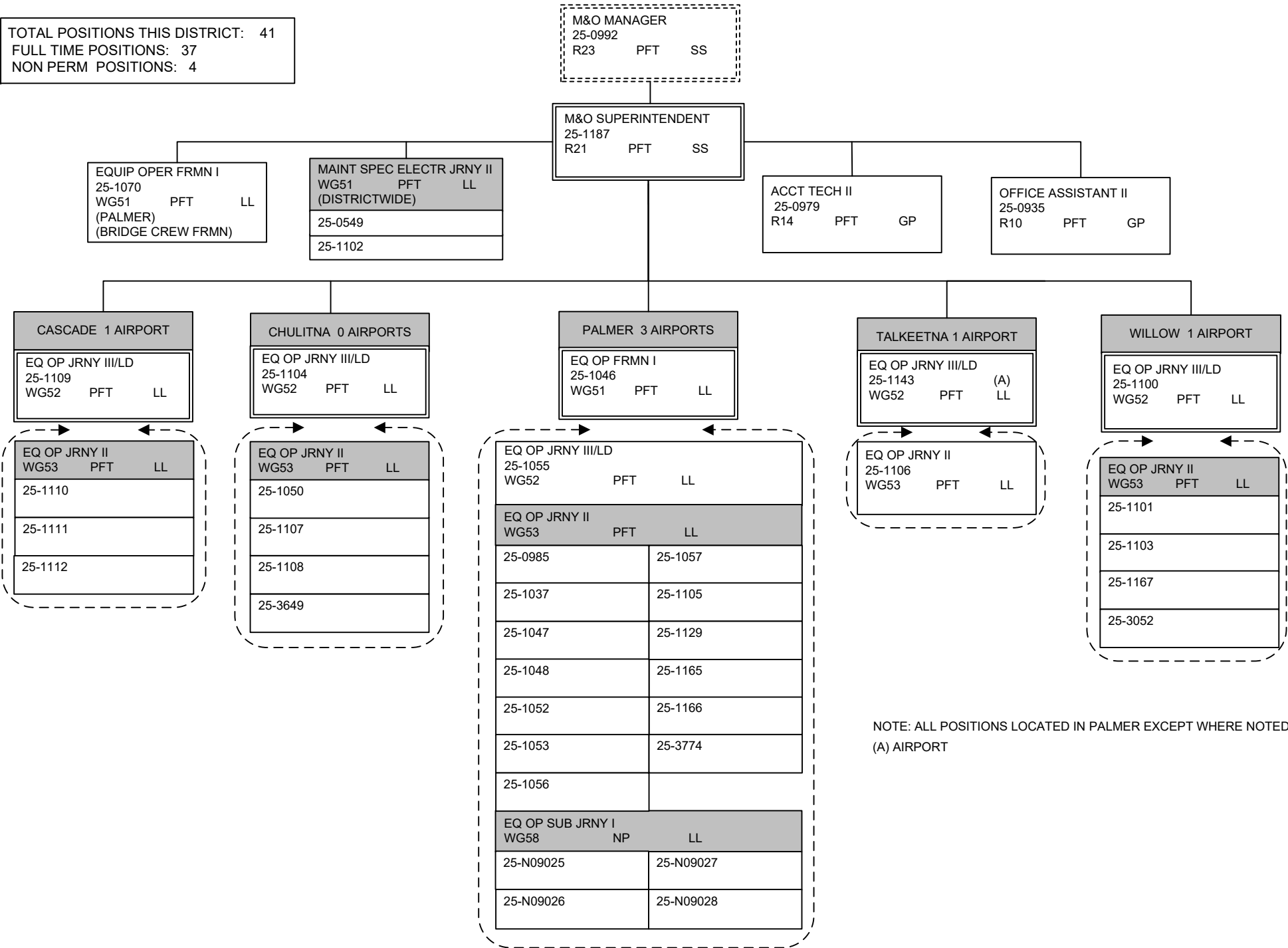


NOTE: ALL POSITIONS LOCATED IN ANCHORAGE EXCEPT WHERE NOTED. PCN 25-1099 SUPERVISED BY 25-1182 FROM OCT 15TH THRU APR 15TH.

**DEPARTMENT OF TRANSPORTATION AND PUBLIC FACILITIES
RDU: HIGHWAYS, AVIATION AND FACILITIES
COMPONENT: CENTRAL REGION HIGHWAYS & AVIATION (564)
2021 GOVERNOR'S BUDGET**

MATSU DISTRICT

TOTAL POSITIONS THIS DISTRICT: 41
FULL TIME POSITIONS: 37
NON PERM POSITIONS: 4

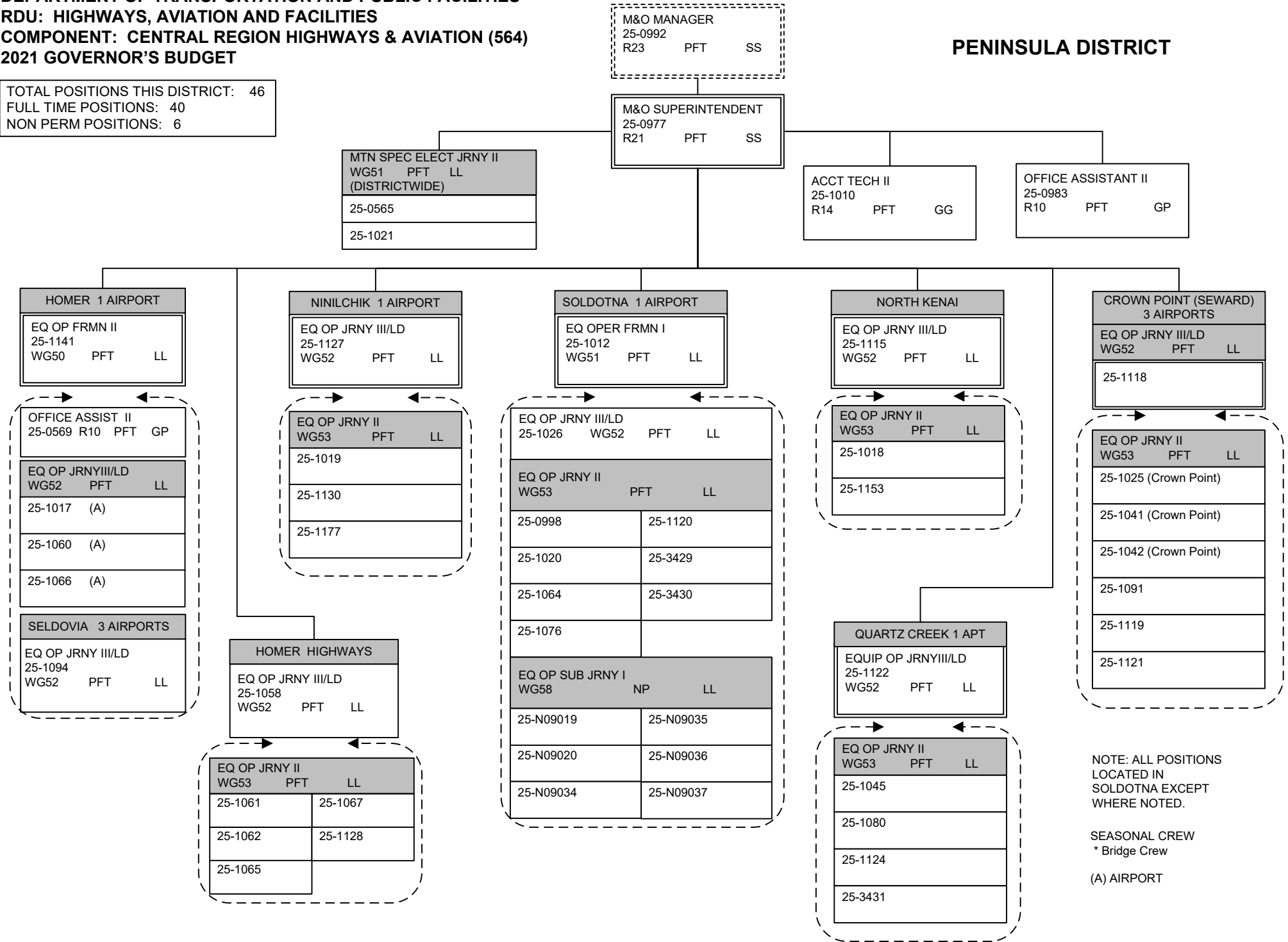


NOTE: ALL POSITIONS LOCATED IN PALMER EXCEPT WHERE NOTED.
(A) AIRPORT

DEPARTMENT OF TRANSPORTATION AND PUBLIC FACILITIES
RDU: HIGHWAYS, AVIATION AND FACILITIES
COMPONENT: CENTRAL REGION HIGHWAYS & AVIATION (564)
2021 GOVERNOR'S BUDGET

PENINSULA DISTRICT

TOTAL POSITIONS THIS DISTRICT: 46
 FULL TIME POSITIONS: 40
 NON PERM POSITIONS: 6



NOTE: ALL POSITIONS
 LOCATED IN
 SOLDOTNA EXCEPT
 WHERE NOTED.

SEASONAL CREW
 * Bridge Crew

(A) AIRPORT

DEPARTMENT OF TRANSPORTATION AND PUBLIC FACILITIES
 RDU: HIGHWAYS, AVIATION AND FACILITIES
 COMPONENT: CENTRAL REGION HIGHWAYS & AVIATION (564)
 2021 GOVERNOR'S BUDGET

SOUTHWEST DISTRICT

TOTAL POSITIONS THIS DISTRICT 23
 FULL TIME POSITIONS 23

ENGINEER/ARCHITECT IV
 25-1217
 R26 PFT SS

M&O SUPERINTENDENT
 25-0974
 R21 PFT SS

ADMIN ASSISTANT II
 25-1169
 R14 PFT GP

ANIAK 7 AIRPORTS

EQ OP FRMN I 25-1000	(A)
WG51 PFT	LL

EQ OP JRNY II
 25-1152 (A)
 WG53 PFT LL

BETHEL 27 AIRPORTS

AIRPORT OPER SPEC 25-3573	SS
R19 PFT	

OFFICE ASSISTANT II
 25-1185
 R10 PFT GP

RURAL AIRPORT FRMN
 25-1004 (A)
 WG49 PFT LL

EQ OP JRNY III/LD WG52 PFT LL	
25-1022	25-3812
25-1085	25-3813
25-3639	25-3814
25-3811	

MCGRATH 6 AIRPORTS

EQ OP FRMN I 25-1150	(A)
WG51 PFT	LL

DILLINGHAM 12 AIRPORTS

RURAL AIRPORT FRMN 25-1038	(A)
WG49 PFT	LL

OFFICE ASSISTANT II
 25-1156 (A)
 R10 PFT GP

EQ OP JRNY III/LD WG52 PFT LL	
25-1039	(A)
25-1051	(A)
25-1087	(A)
25-1144	(A)
25-1145	
25-3717	

NOTE: POSITIONS LOCATED IN ANCHORAGE EXCEPT WHERE NOTED.

(A) AIRPORT