

State of Alaska
FY2021 Governor's Operating Budget

Department of Transportation/Public Facilities
Northern Region Highways and Aviation
Component Budget Summary

Component: Northern Region Highways and Aviation

Contribution to Department's Mission

Efficiently operate, preserve, protect, manage, and control the state's highway, airport, and harbor systems.

Core Services

- Winter operation, preservation, and repair, including snow plowing and removal, sanding, de-icing, avalanche prevention and control, drift control, and culvert thawing to keep roads and airports open and safe for travel.
- Summer road, bridge, and airport maintenance including: grading, pothole patching, crack sealing, leveling of heaves and dips, brush clearing, street sweeping, dust control, ditch and culvert cleaning, erosion control, bike path preservation, fence and guardrail repair, bridge maintenance, bridge repair, sign preservation, street light maintenance, and traffic signal repair.
- Preserve airport lighting systems including: airport runway and taxiway lighting, beacons, segmented circles, and wind cones.
- Maintain federally mandated airport security including: access control, badging, and fencing in accordance with Federal Aviation Administration (FAA) and the Department of Homeland Security Transportation Security Administration (TSA) requirements.
- Airport operation compliance, including inspection and assurance, to ensure state airports are operated in accordance with FAA operating regulations.
- Communicating winter road conditions.
- Emergency disaster response to damages on transportation infrastructure.
- Trash removal along roadsides and at rest areas, turnouts, and campgrounds within department-owned and managed facilities and rights-of-way.
- Control of encroachments on driveways, access roads, signs, utilities, and other state rights-of-way.
- Provide an active avalanche prevention program.

Major Component Accomplishments in 2019

- Partnered with Chitina Dipnetters Association through the Department of Fish and Game to secure funds and improve access to the fishery.
- Supported November 30, 2018 Alaska earthquake response.
- Supported 2019 Interior fire response with traffic control, logistics, and road maintenance activities.
- Participated as co-permittee with the City of Fairbanks, the City of North Pole, and the University of Alaska in the Fairbanks Municipal Separate Storm Sewer System program.
- Delivered rural airport contingency shelters for Allakaket, Bettles, Hughes, and Tanana. Shelters provide lodging for DOT&PF personnel and possibly other state personnel traveling to these locations.
- Completed three injection well closures, complying with an Environmental Protection Agency (EPA) consent decree. Additional scheduled closures in 2020 and 2021 will complete the EPA closure deadline of December 2021.
- Secured funding to participate in projects with University of Alaska and other western states to research drone technology for providing better avalanche modeling and response for improved safety.
- Collected \$245.0 in damage recovery for infrastructure repairs due to traffic accidents and bridge strikes.
- Successfully implemented week on/week off schedules for Fairbanks area winter snow removal activities, resulting in longer road coverage hours with no cost increase.
- Secured a maintenance agreement with City of Tanana for maintenance assistance on the Tanana Road.
- Successfully implemented divestment of Basin Creek Airport.
- Operated, maintained, and repaired 8937 lane miles of roads, 1729 lane miles of aviation operation surfaces at 104 airports, and 376 bridges.
- Provided aircraft rescue and firefighting services and wildlife hazard management activities, at six certificated airports.
- Applied chip seal, high float surfacing, and/or hot mix asphalt paving to 254 lane miles, essentially returning 2,170 centerline miles of roadway to significantly better service condition throughout the region.

- Protected 750 centerline miles of roadway by crack sealing or crack banding.
- Reshaped and applied dust palliatives to the runways, taxiways, and aprons on four rural airports: Noatak, Noorvik, Buckland, and Savoonga: Dust palliative is onsite at Selawik, Alakanuk, Russian Mission, Koyuk, and Elim for application during summer 2020.
- Cut approximately 3,825 lane miles of brush and trees along highways, side roads, and bike paths; and approximately 693 lane-miles of brush and trees at airports.
- Performed maintenance on 25 bridges, re-striped 4,331 lane miles of roadways, and repaired 5,892 linear feet of guardrail, fencing, and other barriers.
- Responded to and cleaned up 49 avalanches at Atigun Pass on the Dalton Highway of which 29 blocked the roadway. Responded to seven major avalanches in Thompson Pass, two of which blocked the Richardson Highway.
- Developed and administered 10 aggregate crushing contracts, stockpiling over 215,000 cubic yards of material for both federal and state repair projects.

Key Component Challenges

- Budgetary restrictions due to uncertain fund sources create unstable budget availability and impact decision making.
- Recruitment and retention across the division considering challenges with competitive wage rates and benefits, minimum qualification requirements, and personnel policies.
- Aging equipment fleet and inability to replace equipment due to lack of legislative authority and continued deferred replacement costs.
- Maintaining mission critical travel with reduced travel budgets.
- Replacement of unrestricted general funds with Federal Highway Administration Preventative Maintenance dollars, which can only be used for pavement surface treatments or calcium chloride, has severely reduced funding for critical road maintenance such as grading, pothole repair, drainage structure repair, and snow removal.
- Improving communication with industry and the travelling public regarding road and airport conditions and maintenance activities.
- Current budget levels are not adequate to support and maintain technologically advanced systems after initial investments, such as management systems and modern heavy equipment guidance systems.
- Depleted aggregated material sites. Current regulatory requirements make the permitting of replacement sites expensive and time-consuming, and land available for new sites is becoming harder to find and acquire.
- Reduction in the capital deferred maintenance program will result in the growth of deferred maintenance needs. If these needs are not addressed, it will result in the deterioration of roadway and airport infrastructure.
- Continued expansion of infrastructure without funding increments to support maintenance.
- Unanticipated costs of core services to support shared services processes that are inefficient and create additional administrative burdens.

Significant Changes in Results to be Delivered in FY2021

- Funding to adequately maintain regional management systems has not been realized. The new maintenance management system from AgileAssets and the Maintenance Decision Support System are anticipated to be operated at reduced levels in FY2021, resulting in less informed decisions regarding commodity use and resource allocations, and will result in reduced efficiency.
- Communications will improve with implementation of a new 511 system, integrating weather forecasting and road condition reporting.
- Dust palliative products will be piloted that are less susceptible to water and corrosiveness. This will provide better gravel surface performance during extended rainfalls and reduce equipment corrosion.

Statutory and Regulatory Authority

AS 02 Aeronautics
AS 19 Highways and Ferries
AS 30 Harbors and Shipping
AS 38 Motor Vehicles
AS 44 State Government

AAC 13 Public Safety
AAC 14 Public Works
AAC 17 DOT&PF
CFR 14 Aeronautics
CFR 49 Airport Security
CRF 23 Highways

Contact Information
<p>Contact: Jason Sakalaskas, Northern Region M&O Chief Phone: (907) 451-2214 E-mail: jason.sakalaskas@alaska.gov</p>

Northern Region Highways and Aviation Personal Services Information				
Authorized Positions			Personal Services Costs	
	FY2020 Management Plan	FY2021 Governor		
Full-time	249	250	Annual Salaries	20,104,998
Part-time	53	51	COLA	24,560
Nonpermanent	20	20	Premium Pay	2,473,856
			Annual Benefits	13,601,543
			<i>Less 5.29% Vacancy Factor</i>	<i>(1,915,860)</i>
			Lump Sum Premium Pay	0
Totals	322	321	Total Personal Services	34,289,097

Position Classification Summary					
Job Class Title	Anchorage	Fairbanks	Juneau	Others	Total
Accounting Technician I	0	1	0	0	1
Administrative Assistant I	0	2	0	2	4
Administrative Assistant II	0	1	0	0	1
Administrative Assistant III	0	3	0	4	7
Administrative Officer I	0	1	0	0	1
Administrative Officer II	0	1	0	0	1
E/Op Jrny III	0	2	0	48	50
E/Op Subjrny I	0	7	0	12	19
E/Op Subjrny II	0	10	0	7	17
Engineer/Architect II	0	1	0	0	1
Engineer/Architect III	0	1	0	0	1
Engineer/Architect IV	0	1	0	0	1
Engineering Assistant II	0	2	0	0	2
Engineering Associate	0	1	0	0	1
Env Imp Any III	0	1	0	0	1
Env Prgm Spcii	0	1	0	0	1
Environmental Impact Analyst I	0	1	0	0	1
Equipment Operator Foreman I	0	7	0	9	16
Equipment Operator Foreman II	0	1	0	3	4
Equipment Operator, Journey I	0	14	0	10	24
Equipment Operator, Journey II	0	28	0	110	138
Maint & OPS Spr	0	3	0	4	7
Mts/EI Jrny II	0	2	0	2	4
Mts/Tces Frmn	0	1	0	0	1
Mts/Tces Jrnyii	0	2	0	0	2
Office Assistant II	0	0	0	1	1
Office Assistant III	0	0	0	3	3
Rural Airport Foreman	0	0	0	6	6
S&E Spt Spec	0	0	0	1	1
Safety Officer	0	1	0	0	1
Stock & Parts Services II	0	1	0	0	1
Stock & Parts Services III	0	0	0	2	2
Totals	0	97	0	224	321

Component Detail All Funds
Department of Transportation/Public Facilities

Component: Northern Region Highways and Aviation (2068)
RDU: Highways, Aviation and Facilities (408)

Non-Formula Component

	FY2019 Actuals	FY2020 Conference Committee	FY2020 Authorized	FY2020 Management Plan	FY2021 Governor	FY2020 Management Plan vs FY2021 Governor	
71000 Personal Services	33,927.1	34,114.8	33,979.8	33,683.1	34,289.1	606.0	1.8%
72000 Travel	790.4	401.4	358.6	1,205.0	1,300.0	95.0	7.9%
73000 Services	19,814.0	19,113.2	18,996.2	18,976.3	18,948.3	-28.0	-0.1%
74000 Commodities	8,595.2	10,248.7	10,248.7	9,743.9	9,743.9	0.0	0.0%
75000 Capital Outlay	126.0	0.0	0.0	0.0	0.0	0.0	0.0%
77000 Grants, Benefits	0.0	0.0	0.0	0.0	0.0	0.0	0.0%
78000 Miscellaneous	0.0	0.0	0.0	0.0	0.0	0.0	0.0%
Totals	63,252.7	63,878.1	63,583.3	63,608.3	64,281.3	673.0	1.1%
Fund Sources:							
1002 Fed Rcpts (Fed)	0.0	122.4	122.4	122.4	122.4	0.0	0.0%
1004 Gen Fund (UGF)	32,780.5	34,401.7	34,149.7	34,174.7	34,425.2	250.5	0.7%
1005 GF/Prgm (DGF)	328.8	401.1	401.0	401.0	404.4	3.4	0.8%
1007 I/A Rcpts (Other)	105.6	151.7	151.1	151.1	158.2	7.1	4.7%
1027 Int Airprt (Other)	0.0	0.0	0.0	0.0	52.2	52.2	100.0%
1061 CIP Rcpts (Other)	8,169.2	7,296.8	7,279.4	7,279.4	7,238.0	-41.4	-0.6%
1108 Stat Desig (Other)	7.7	63.4	63.4	63.4	64.8	1.4	2.2%
1200 VehRntlTax (DGF)	498.1	500.5	500.5	500.5	502.9	2.4	0.5%
1239 AvFuel Tax (Other)	2,432.3	2,444.4	2,434.7	2,434.7	2,448.3	13.6	0.6%
1244 Rural Air (Other)	1,782.1	1,190.4	1,175.4	1,175.4	1,388.1	212.7	18.1%
1249 Motor Fuel (DGF)	17,148.4	17,305.7	17,305.7	17,305.7	17,476.8	171.1	1.0%
Unrestricted General (UGF)	32,780.5	34,401.7	34,149.7	34,174.7	34,425.2	250.5	0.7%
Designated General (DGF)	17,975.3	18,207.3	18,207.2	18,207.2	18,384.1	176.9	1.0%
Other Funds	12,496.9	11,146.7	11,104.0	11,104.0	11,349.6	245.6	2.2%
Federal Funds	0.0	122.4	122.4	122.4	122.4	0.0	0.0%
Positions:							
Permanent Full Time	248	249	248	249	250	1	0.4%
Permanent Part Time	53	54	53	53	51	-2	-3.8%
Non Permanent	20	20	20	20	20	0	0.0%

Change Record Detail - Multiple Scenarios with Descriptions
Department of Transportation/Public Facilities

Component: Northern Region Highways and Aviation (2068)
RDU: Highways, Aviation and Facilities (408)

Scenario/Change Record Title	Trans Type	Totals	Personal Services	Travel	Services	Commodities	Capital Outlay	Grants, Benefits	Miscellaneous	Positions		NP
										PFT	PPT	
***** Changes From FY2020 Conference Committee To FY2020 Authorized *****												
FY2020 Conference Committee												
ConfCom		63,878.1	34,114.8	401.4	19,113.2	10,248.7	0.0	0.0	0.0	249	54	20
1002 Fed Rcpts		122.4										
1004 Gen Fund		34,401.7										
1005 GF/Prgm		401.1										
1007 I/A Rcpts		151.7										
1061 CIP Rcpts		7,296.8										
1108 Stat Desig		63.4										
1200 VehRntlTax		500.5										
1239 AvFuel Tax		2,444.4										
1244 Rural Air		1,190.4										
1249 Motor Fuel		17,305.7										
Executive Branch 50% Travel Reduction												
Veto		-42.8	0.0	-42.8	0.0	0.0	0.0	0.0	0.0	0	0	0
1005 GF/Prgm		-0.1										
1007 I/A Rcpts		-0.6										
1061 CIP Rcpts		-17.4										
1239 AvFuel Tax		-9.7										
1244 Rural Air		-15.0										

State agency travel budgets, not covered under the exemptions of public safety, health, and disaster management, were reduced 50% in the Governor's FY2020 budget. Veto action removes legislative increases to state travel. Agencies will rely on technology and management efficiencies to reduce the amount of state employee travel.

The State's fiscal reality dictates a reduction in expenditures across all agencies.

Reduce Cost of Rural Airport Maintenance

Veto		-17.0	0.0	0.0	-17.0	0.0	0.0	0.0	0.0	0	0	0
1004 Gen Fund		-17.0										

Reduce the cost of rural airport maintenance through divestiture or airport reclassification to backcountry. Ownership and/or management responsibility for some rural airports may be transferred to another entity.

A variety of criteria will be utilized to determine the essential purpose and need for each airport including elements such as population served, alternate transportation modes available, education and healthcare access and federal grant obligations.

Since 2009, the number of state-owned rural airports and seaplane bases has decreased from 256 to 237.

The State's fiscal reality dictates a reduction in expenditures across all agencies.

Change Record Detail - Multiple Scenarios with Descriptions
Department of Transportation/Public Facilities

Component: Northern Region Highways and Aviation (2068)
RDU: Highways, Aviation and Facilities (408)

Scenario/Change Record Title	Trans Type	Totals	Personal Services	Travel	Services	Commodities	Capital Outlay	Grants, Benefits	Miscellaneous	Positions		NP
										PFT	PPT	
Reverse Cost of Rural Airport Maintenance Reduction												
1004 Gen Fund	Inc	17.0	0.0	0.0	17.0	0.0	0.0	0.0	0.0	0	0	0
Legislative add-back appropriation made in Chapter 2, SSSLA2019, of HB2001.												
Reduce Cost of Rural Airport Maintenance												
1004 Gen Fund	Veto	-17.0	0.0	0.0	-17.0	0.0	0.0	0.0	0.0	0	0	0
Reduce the cost of rural airport maintenance through divestiture or airport reclassification to backcountry. Ownership and/or management responsibility for some rural airports may be transferred to another entity.												
A variety of criteria will be utilized to determine the essential purpose and need for each airport including elements such as population served, alternate transportation modes available, education and healthcare access and federal grant obligations.												
Since 2009, the number of state-owned rural airports and seaplane bases has decreased from 256 to 237.												
The State's fiscal reality dictates a reduction in expenditures across all agencies.												
Eliminate Seasonal Position Added for Dalton Highway Maintenance												
1004 Gen Fund	Veto	-50.0	-50.0	0.0	0.0	0.0	0.0	0.0	0.0	0	-1	0
This position is not needed at this time.												
The State's fiscal reality dictates a reduction in expenditures across all agencies.												
Restore Seasonal Position Added for Dalton Highway Maintenance												
1004 Gen Fund	Inc	50.0	50.0	0.0	0.0	0.0	0.0	0.0	0.0	0	1	0
Legislative add-back appropriation made in Chapter 2, SSSLA2019, of HB2001.												
Eliminate Seasonal Position Added for Dalton Highway Maintenance												
1004 Gen Fund	Veto	-50.0	-50.0	0.0	0.0	0.0	0.0	0.0	0.0	0	-1	0
This position is not needed at this time.												
The State's fiscal reality dictates a reduction in expenditures across all agencies.												

Change Record Detail - Multiple Scenarios with Descriptions
Department of Transportation/Public Facilities

Component: Northern Region Highways and Aviation (2068)
RDU: Highways, Aviation and Facilities (408)

Scenario/Change Record Title	Trans Type	Totals	Personal Services	Travel	Services	Commodities	Capital Outlay	Grants, Benefits	Miscellaneous	Positions		NP	
										PFT	PPT		
Eliminate Reopening of the Chitina Maintenance Station													
1004 Gen Fund	Veto	-185.0	-85.0	0.0	-100.0	0.0	0.0	0.0	0.0	0.0	-1	0	0
The Chitina maintenance station was one of four maintenance stations closed in October 2016. Maintenance needs have shifted to other locations.													
The State's fiscal reality dictates a reduction in expenditures across all agencies.													
Restore Reopening of the Chitina Maintenance Station													
1004 Gen Fund	Inc	185.0	85.0	0.0	100.0	0.0	0.0	0.0	0.0	0.0	1	0	0
Legislative add-back appropriation made in Chapter 2, SSSLA2019, of HB2001.													
Eliminate Reopening of the Chitina Maintenance Station													
1004 Gen Fund	Veto	-185.0	-85.0	0.0	-100.0	0.0	0.0	0.0	0.0	0.0	-1	0	0
The Chitina maintenance station was one of four maintenance stations closed in October 2016. Maintenance needs have shifted to other locations.													
The State's fiscal reality dictates a reduction in expenditures across all agencies.													
Subtotal		63,583.3	33,979.8	358.6	18,996.2	10,248.7	0.0	0.0	0.0	0.0	248	53	20
***** Changes From FY2020 Authorized To FY2020 Management Plan *****													
Transfer Stock & Parts Services Positions from Northern Region Support Services due to Warehouse Restructure													
	Trin	0.0	0.0	0.0	0.0	0.0	0.0	0.0	0.0	0.0	2	1	0
Transfer four positions from Northern Support Services to Northern Region Highways and Aviation offices in Fairbanks, Nome, and Valdez. Northern Region has restructured and closed the stock and parts warehouses in Fairbanks and Valdez. One position was eliminated as a result of the closure. Positions are paid via reimbursable services agreement in FY2020. Funding for the positions transfers in FY2021.													
Positions transferred:													
Full-time Stock and Parts Services II (25-1225), range 55, located in Fairbanks													
Full-time Stock and Parts Services III (25-1260), range 54, located in Valdez													
Full-time Stock and Parts Services III (25-1253), range 54, located in Nome													
Position deleted:													
Full-time Stock and Parts Services I (25-1249), range 57, located in Fairbanks													
Transfer Eng Asst I/II (25-1818) from Northern Region Construction & CIP Support for Preventative Maintenance Support													
	Trin	0.0	0.0	0.0	0.0	0.0	0.0	0.0	0.0	0.0	0	1	0

Change Record Detail - Multiple Scenarios with Descriptions
Department of Transportation/Public Facilities

Component: Northern Region Highways and Aviation (2068)
RDU: Highways, Aviation and Facilities (408)

Scenario/Change Record Title	Trans Type	Totals	Personal Services	Travel	Services	Commodities	Capital Outlay	Grants, Benefits	Miscellaneous	Positions		NP
										PFT	PPT	
Transfer part-time Engineer Assistant I/II (25-1818), range 17/19, located in Fairbanks, from Northern Region Construction & CIP Support to Northern Region Highways and Aviation as full-time position to support design and engineering functions for the Federal Preventative Maintenance program, which is the primary surface maintenance funding source for Northern Region roads.												
Transfer from Northern Region Facilities for Safety Officer Support												
1004 Gen Fund	Trin	25.0	0.0	25.0	0.0	0.0	0.0	0.0	0.0	0	0	0
Transfer from Northern Region Facilities to Northern Highways and Aviation to partially fund the Highways and Aviation Safety Officer position. The Safety Officer provides the Division of Facilities Services, Northern Region Facilities with services such as safety and health compliance activities, safety training, and accident investigation and reporting.												
Change Engineering Assistant II (25-1818) from Part-Time to Full-Time for Preventative Maintenance Support												
	PosAdj	0.0	0.0	0.0	0.0	0.0	0.0	0.0	0.0	1	-1	0
Change a part-time Engineering Assistant II (25-1818), range 19, located in Fairbanks, to full-time for preventative maintenance support.												
Delete Positions to Align with Anticipated Workload												
	PosAdj	0.0	0.0	0.0	0.0	0.0	0.0	0.0	0.0	-2	-1	0
Delete the following positions to align with anticipated workload, revenue, and expenditures:												
Full-time Information System Coordinator (25-1910), range 18, located in Fairbanks												
Part-time Equipment Operator Journey I (25-1978), range 54, located in South Fork												
Full-time Office Assistant II (25-2105), range 10, located in Fairbanks												
Align Authority with Anticipated Expenditures												
	LIT	0.0	-296.7	821.4	-19.9	-504.8	0.0	0.0	0.0	0	0	0
Transfer authority from personal services, services, and commodities to cover anticipated travel costs related to the loss the of Shared Services flight benefits to Deadhorse and Barrow maintenance stations for the Dalton District. The remaining personal services, services, and commodities authority is sufficient to cover anticipated expenditures.												
Subtotal		63,608.3	33,683.1	1,205.0	18,976.3	9,743.9	0.0	0.0	0.0	249	53	20
***** Changes From FY2020 Management Plan To FY2021 Governor *****												
Transfer to Statewide Aviation for Airport Safety and Security Officer Travel												
1244 Rural Air	Trout	-40.0	0.0	0.0	-40.0	0.0	0.0	0.0	0.0	0	0	0
Transfer from Northern Region Highways and Aviation to Statewide Aviation to fund mission critical travel. Regional Airport Safety and Security Officers (SSOs)												

Change Record Detail - Multiple Scenarios with Descriptions
Department of Transportation/Public Facilities

Component: Northern Region Highways and Aviation (2068)
RDU: Highways, Aviation and Facilities (408)

Scenario/Change Record Title	Trans Type	Totals	Personal Services	Travel	Services	Commodities	Capital Outlay	Grants, Benefits	Miscellaneous	Positions		
										PFT	PPT	NP
are responsible for the state programs required by federally-mandated safety and security regulations. Substandard FY2019 Federal Aviation Administration and Transportation Security Administration inspection performance at several airports, including likely pending civil penalties, mandates a greater SSO presence at and participation in airport operations surrounding Part 139 certificated airports.												
Transfer to Northern Region Construction and CIP Support to Align Authority with Anticipated Expenditures												
1061 CIP Rcpts	Trout	-300.0	-300.0	0.0	0.0	0.0	0.0	0.0	0.0	0	0	0
Transfer from Northern Region Highways and Aviation to Northern Region Construction and CIP Support to align authority with anticipated personal services expenditures. Additional authority is necessary due to changing the time status of 23 Engineering Assistants from seasonal full-time (part-time status) to full-time in support of the federally funded construction program. The remaining Northern Region Highways and Aviation authority is sufficient due to less federally funded resources available to maintenance and operations.												
Transfer from Northern Region Support Services to Fund Warehouse Consolidation												
1004 Gen Fund	Trin	218.6	296.3	95.0	12.0	0.0	0.0	0.0	0.0	0	0	0
1027 Int Airprt		52.2										
1061 CIP Rcpts		132.5										
Transfer authority from Northern Support Services to Northern Highways and Aviation to fund warehouse consolidation. The positions were transferred in FY2020. Northern Region has restructured and closed the stock and parts warehouses in Fairbanks and Valdez.												
Transfer Engineer Tech Journey (25-1468) to Northern Region Construction to support Capital Construction Program												
	Trout	0.0	0.0	0.0	0.0	0.0	0.0	0.0	0.0	-1	0	0
Transfer vacant full-time Engineer Technician (25-1468), range 54, located in Fairbanks from Northern Region Highways and Aviation to Northern Region Construction and CIP Support to monitor components of large heavy construction projects, ensure document conformance, and provide supporting engineering duties for the capital construction program.												
FY2021 Salary and Health Insurance Increases												
	SalAdj	609.7	609.7	0.0	0.0	0.0	0.0	0.0	0.0	0	0	0
1004 Gen Fund		279.9										
1005 GF/Prgm		3.4										
1007 I/A Rcpts		7.1										
1061 CIP Rcpts		126.1										
1108 Stat Desig		1.4										
1200 VehRntlTax		2.4										
1239 AvFuel Tax		13.6										
1244 Rural Air		4.7										
1249 Motor Fuel		171.1										

FY2021 increase to LTC Health Insurance from \$1530 to \$1555 per member per month: \$571.9

Change Record Detail - Multiple Scenarios with Descriptions
Department of Transportation/Public Facilities

Component: Northern Region Highways and Aviation (2068)
RDU: Highways, Aviation and Facilities (408)

Scenario/Change Record Title	Trans Type	Totals	Personal Services	Travel	Services	Commodities	Capital Outlay	Grants, Benefits	Miscellaneous	Positions		
										PFT	PPT	NP
FY2021 GGU Salary Increases: \$26.6												
FY2021 increase to GGU Health Insurance from \$1530 to \$1555 per member per month: \$11.2												
Replace Funding Source to Align with Anticipated Revenue												
	FndChg	0.0	0.0	0.0	0.0	0.0	0.0	0.0	0.0	0	0	0
1004 Gen Fund		-248.0										
1244 Rural Air		248.0										
Replace unrestricted general funds with rural airport receipt authority. Based on current revenue projections, this fund source change is sustainable. A yearly evaluation of revenue and future projected revenue collections may warrant additional fund source swaps in the future.												
Change Northern Region Staff (25-3489 and 25-3662) for Regional Restructuring Efficiencies												
	PosAdj	0.0	0.0	0.0	0.0	0.0	0.0	0.0	0.0	2	-2	0
Change two Northern Region staff from full-time to part-time for regional restructuring efficiencies. The Northern Region has restructured the administrative support staff into one team that serves a critical administrative support role for the operations of all Northern Region components, and assigned an equipment operator position as a roving position for the highway that can be better utilized to back-up the high vacancy rate in the district and to support preventative maintenance activities during the summer months.												
The following positions are changed to full-time: Administrative Assistant I (25-3489), range 12, located in Tok Equipment Operator, Journey II (25-3662), range 53, located in Dalton Highway district												
	Totals	64,281.3	34,289.1	1,300.0	18,948.3	9,743.9	0.0	0.0	0.0	250	51	20

Line Item Detail (1676)
Department of Transportation/Public Facilities
Travel

Component: Northern Region Highways and Aviation (2068)

Line Number	Line Name		FY2019 Actuals	FY2020 Management Plan	FY2021 Governor
2000	Travel		790.4	1,205.0	1,300.0
Object Class	Servicing Agency	Explanation	FY2019 Actuals	FY2020 Management Plan	FY2021 Governor
2000 Travel Detail Totals			790.4	1,205.0	1,300.0

2000	In-State Employee Travel	Transportation and per diem for maintenance personnel to perform maintenance activities including roadway striping, bridge repair, and major roadway repairs at locations off the contiguous highway system. Travel for personnel to support rural airport runway lighting repairs, airfield maintenance equipment repairs, and inspection of contractor performance and compliance with plans, codes and regulations, such as Stormwater Pollution Prevention Plans. This travel is primarily by air and, in the case of rural airports, air taxi and charter services are necessary. This includes the Dalton Highway maintenance program requiring round trip travel every two weeks for employees at Deadhorse and Barrow and an aircraft charter contract for 11 employees at Chandalar. Per diem is paid for highway and airport crews traveling to outlying villages or working away from their assigned duty station. Includes special crews for traffic striping, asphalt patching, bridge repairs, washouts, or avalanche cleanup. Deadhorse Airport extended	774.4	1,187.8	1,282.8
------	--------------------------	-------------------------------------------------------------------------------------------------------------------------------------------------------------------------------------------------------------------------------------------------------------------------------------------------------------------------------------------------------------------------------------------------------------------------------------------------------------------------------------------------------------------------------------------------------------------------------------------------------------------------------------------------------------------------------------------------------------------------------------------------------------------------------------------------------------------------------------------------------------------------------------------------------------------------------------------------------------------------------------------------------------------------------------------------------------------------	-------	---------	---------

Line Item Detail (1676)
Department of Transportation/Public Facilities
Travel

Component: Northern Region Highways and Aviation (2068)

Object Class	Servicing Agency	Explanation	FY2019 Actuals	FY2020 Management Plan	FY2021 Governor
2000 Travel Detail Totals			790.4	1,205.0	1,300.0
		operations increment; \$90.0 GF, \$90.0 GF/PR			
		Travel and per diem for the director and other administrative staff members for highway, airport and facility inspections, and administration and management of the agency. This includes funding for indirect travel costs in support of capital projects (ICAP).			
		Travel for training sessions on airport safety and security, airport rescue and firefighting (ARFF), avalanche control and administration of Federal Highway Administration, and Federal Aviation Administration projects. This includes funding for training costs in support of capital projects (ICAP).			
2001	In-State Non-Employee Travel	In-state non-employee travel.	1.2	0.0	0.0
2002	Out of State Employee Travel	Travel to out of state meetings for the director, maintenance engineer, regional maintenance manager and other managers where training or sessions are not held in Alaska.	14.8	13.2	13.2
2005	Moving Costs	Moving costs for newly hired or transferred employees.	0.0	4.0	4.0

Line Item Detail (1676)
Department of Transportation/Public Facilities
Services

Component: Northern Region Highways and Aviation (2068)

Line Number	Line Name		FY2019 Actuals	FY2020 Management Plan	FY2021 Governor
3000	Services		19,814.0	18,976.3	18,948.3
Object Class	Servicing Agency	Explanation	FY2019 Actuals	FY2020 Management Plan	FY2021 Governor
3000 Services Detail Totals			19,814.0	18,976.3	18,948.3
3000	Education Services	Registration and tuition fees for training in maintenance management, hazardous waste management, snow and ice control, bridge rehabilitation, and other specialized maintenance services.	86.4	57.0	57.0
3001	Financial Services	Insurance costs for rural airport maintenance contracts.	16.6	118.4	118.4
3003	Information Technology	Software licensing and software maintenance.	29.5	18.3	18.3
3004	Telecommunications	Long distance, local phone service, cellular service and satellite phones provided by vendors.	816.7	229.7	229.7
3005	Health Services	Drug and alcohol testing for employees with commercial driver's licenses.	69.4	35.0	35.0
3006	Delivery Services	Delivery services.	285.1	102.5	102.5
3007	Advertising and Promotions	Public notices for weight restrictions, studded tires and road closures.	17.6	2.5	2.5
3008	Utilities	Electrical energy for street lights, signal systems, pre-heating of airport maintenance equipment to allow starting during extreme cold, railroad crossing signals and airfield lighting systems.	1,652.4	1,179.6	1,179.6
3008	Utilities	Water for street sweepers.	0.0	9.7	9.7
3008	Utilities	Garbage dump costs for litter and	0.0	88.4	88.4

Line Item Detail (1676)
Department of Transportation/Public Facilities
Services

Component: Northern Region Highways and Aviation (2068)

Object Class	Servicing Agency	Explanation	FY2019 Actuals	FY2020 Management Plan	FY2021 Governor
3000 Services Detail Totals			19,814.0	18,976.3	18,948.3
		trash cleanup of roads, waysides, and facilities.			
3008	Utilities	Propane.	0.0	3.0	3.0
3009	Structure/Infrastructure/Land	Inspections/Testing-Sample testing of crushed material and soil.	0.0	15.0	15.0
3009	Structure/Infrastructure/Land	Contracts for maintenance and upgrades for guardrail, bike paths, brush cutting, waysides/pullouts, Alaska Railroad crossings, striping; gravel crushing, and supplemental snow removal or grading, including services contracted with the private sector and maintenance agreements with local governments. Snow removal contracts at rural airports. Includes \$50.0 GF for Northwest Alaska Ice Roads.	2,676.9	3,980.2	3,940.2
		FY19 Close 11 Non-Obligated Rural Airports \$-114.6			
3009	Structure/Infrastructure/Land	Rental for land, buildings and space: lease fees for Bureau of Land Management or Native corporation property at small airports, railroad crossings and other small land leases. Room rental for hazardous materials and safety training.	0.0	10.0	10.0
3010	Equipment/Machinery	Repairs and maintenance of machinery and equipment other than that paid to State Equipment Fleet such as backhoes, bridge repair equipment, survey and gravel screening equipment, generators, welders, drill presses, pumps, chain saws, and chain hoists. Includes	931.7	52.2	266.9

Line Item Detail (1676)
Department of Transportation/Public Facilities
Services

Component: Northern Region Highways and Aviation (2068)

Object Class	Servicing Agency	Explanation	FY2019 Actuals	FY2020 Management Plan	FY2021 Governor
3000 Services Detail Totals			19,814.0	18,976.3	18,948.3
		rental of copiers and office machines.			
3010	Equipment/Machinery	Rental or leases for specialized tools, machinery and equipment not available from State Equipment Fleet such as backhoes, bridge repair equipment, survey and gravel screening equipment. Rental of extra equipment such as snow blowers, loaders and graders during emergencies or heavy storms.	0.0	609.5	609.5
3011	Other Services	Agreement with City of Fairbanks for National Pollutant Discharge Elimination System (NPDES) permit for Municipal Separate Storm Sewer System (MS4) technical support including surveying, plan development, mapping, etc. Also miscellaneous consultants for this program. Specification and safety manual printing; photo processing, environmental assessments and cleanup.	199.7	403.5	403.5
3011	Other Services	Contracted services to have law enforcement officers (LEO) stationed at rural airports during screening operations.	55.0	60.0	60.0
3011	Other Services	Restricted expenditure authority due to unrealizable motor and aviation fuel tax collections.	0.0	214.7	0.0
3015	Inter-Agency Conservation/Environmental	Admin - Department-wide Reimbursable Services Agreement with ETS for Two Way Radio Maintenance.	32.0	0.0	0.0
3015	Inter-Agency Conservation/Environmental	FishGm - Department-wide Reimbursable Service Agreement for project support services.	1.0	0.0	0.0

Line Item Detail (1676)
Department of Transportation/Public Facilities
Services

Component: Northern Region Highways and Aviation (2068)

Object Class		Servicing Agency	Explanation	FY2019 Actuals	FY2020 Management Plan	FY2021 Governor
3000 Services Detail Totals				19,814.0	18,976.3	18,948.3
3015	Inter-Agency Conservation/Environmental	NatRes - Department-wide	Annual water usage permits paid to Department of Natural Resources.	16.3	5.2	5.2
3015	Inter-Agency Conservation/Environmental	Trans - Northern Design & Eng Svcs (2299)	Technical services including right of way, materials and design services.	0.0	60.0	60.0
3015	Inter-Agency Conservation/Environmental	EnvCon - Department-wide	Stormwater permit fees paid to Department of Environmental Conservation.	5.9	4.0	4.0
3015	Inter-Agency Conservation/Environmental	NatRes - Department-wide	Reimbursable services agreement with Department of Natural Resources for maintenance of the Birch Lake Wayside.	9.0	8.3	8.3
3017	Inter-Agency Information Technology Non-Telecommunications	Admin - Department-wide	Computer services provided by Department of Administration, Division of Enterprise Technology Services, such as central server, data storage, printing, network services, open connect and task order system.	163.2	52.5	58.5
3018	Inter-Agency Information Technology Telecommunications	Admin - Department-wide	Telecommunications services provided by the Department of Administration, Enterprise Technology Services, such as basic telephone services, equipment and features, dedicated voice/data line service, statewide paging, two-way radio, and video conferencing.	42.2	176.5	182.5
3020	Inter-Agency Building Maintenance	Labor - Department-wide	Mechanical inspection testing.	0.1	0.0	0.0
3020	Inter-Agency Building Maintenance	Trans - Northern Region Facilities (2069)	Reimbursable services agreement's with Northern Region Facilities where Highways and Aviation employees are either not available or need expertise in electrical or other facilities.	0.0	26.2	26.2

Line Item Detail (1676)
Department of Transportation/Public Facilities
Services

Component: Northern Region Highways and Aviation (2068)

Object Class		Servicing Agency	Explanation	FY2019 Actuals	FY2020 Management Plan	FY2021 Governor
3000 Services Detail Totals				19,814.0	18,976.3	18,948.3
3021	Inter-Agency Mail	Admin - Department-wide	Chargeback fees for central mail services such as mailing vendor payments and payroll warrants.	1.8	2.7	2.7
3022	Inter-Agency Human Resources	Admin - Department-wide	Chargeback fees for human resource services such as labor relations, position classifications and payroll processing.	0.0	6.4	6.4
3024	Inter-Agency Legal	Law - Department-wide	Legal services provided by the Department of Law with added litigations in settling disputes with private and corporate landowners/lessees where gravel stockpiles are in contention and with land ownership issues with native allotments.	27.5	130.0	130.0
3026	Inter-Agency Insurance	Admin - Department-wide	Liability insurance for rural airport facilities.	50.2	110.2	110.2
3027	Inter-Agency Financial	Admin - Department-wide	Chargeback fees for AKPAY/IRIS/ALDER.	130.4	2.5	2.5
3028	Inter-Agency Americans with Disabilities Act Compliance	Admin - Department-wide	Chargeback fees for the statewide coordinator for the Americans with Disabilities Act (ADA).	1.9	0.7	0.7
3031	Inter-Agency Construction	Trans - Northern Construction & CIP (2295)		2.3	0.0	0.0
3035	Inter-Agency Other Equipment/Machinery	Trans - State Equipment Fleet (2791)	State Equipment Fleet employees working as equipment operators.	0.0	144.1	144.1
3037	State Equipment Fleet	Trans - State Equipment Fleet (2791)	Operating and replacement fees paid to State Equipment Fleet (SEF) for over 1,300 vehicles/equipment. Includes credit/reduction for usage on federal projects. Also includes repair costs of X class vehicles. FY16 Deadhorse Airport extended operations increment; \$16.1 GF,	17,309.5	10,946.9	10,946.9

Line Item Detail (1676)
Department of Transportation/Public Facilities
Services

Component: Northern Region Highways and Aviation (2068)

Object Class	Servicing Agency	Explanation	FY2019 Actuals	FY2020 Management Plan	FY2021 Governor
3000 Services Detail Totals			19,814.0	18,976.3	18,948.3
		\$16.2 GF/PR FY16 reduction to remove funding for Hwy & A/P Surface Maintenance \$-350.0; FY16 reduction to reduce fleet \$-566.7; FY16 Service level reductions \$-1,277.1; FY16 Cost Control & Efficiency Measures \$-340.0 FY17 Service Level Reduction \$-944.1 FY17 GF Program Receipts to Mitigate GF Reduction in FY16 \$-235.9			
3037	State Equipment Fleet	Trans - State Equipment Fleet (2791) SEF Fuel A87 Allowed Credit card vehicle fuel purchases through State Equipment Fleet. Funding based on 20,733 gallons @ \$4.86 = \$100.7. Deadhorse Airport extended operations increment; \$16.6 GF, \$16.6 GF/PR FY2016 Cost Control & Efficiency Measures \$-23.0.	0.0	110.9	110.9
3038	Inter-Agency Management/Consulting	Interagency management consulting with Northern Design & Engineering Services.	17.8	0.0	0.0
3039	DOT/PF Time & Equipment System	Vehicle usage billed to operating and capital accounts based on established rates and actual use of vehicles.	-4,834.1	0.0	0.0

Line Item Detail (1676)
Department of Transportation/Public Facilities
Commodities

Component: Northern Region Highways and Aviation (2068)

Line Number	Line Name		FY2019 Actuals	FY2020 Management Plan	FY2021 Governor
4000	Commodities		8,595.2	9,743.9	9,743.9
Object Class	Servicing Agency	Explanation	FY2019 Actuals	FY2020 Management Plan	FY2021 Governor
4000 Commodities Detail Totals			8,595.2	9,743.9	9,743.9
4000	Business	General office supplies, office furniture, subscriptions, computers and other information technology equipment.	182.5	132.2	132.2
4001	Agricultural	Seed, fertilizer, and herbicide to establish, maintain, and control ground cover at state airports and along state highways.	18.7	10.6	10.6
4002	Household/Institutional	Protective clothing and supplies such as gloves, hip boots, hard hats, safety vests and shoes, safety glasses and coveralls. Also includes absorbent towels, solvent, cleaners, floor sweep, barrels for used oil and hazardous waste storage, trash cans and other janitorial and cleaning supplies.	40.3	76.4	76.4
4004	Safety	Firearms and ammunition used in avalanche and bird control. Fire suppressant chemicals for airport firefighting and rescue vehicles. Other safety and first aid supplies.	160.0	85.0	85.0
4005	Building Materials	Lumber, structural repairs and fencing materials.	50.0	129.8	129.8
4006	Signs and Markers	Signs and markers along roadways and airports.	203.1	118.8	118.8
FY17 Reduce commodities \$-400.0					

Line Item Detail (1676)
Department of Transportation/Public Facilities
Commodities

Component: Northern Region Highways and Aviation (2068)

Object Class	Servicing Agency	Explanation	FY2019 Actuals	FY2020 Management Plan	FY2021 Governor
4000 Commodities Detail Totals			8,595.2	9,743.9	9,743.9
4007	Asphalt	Asphalt, cold mix and hot mix for pavement repairs.	305.2	623.0	723.0
4008	Aggregate	FY2016 reduction (\$200.0) Aggregate compounds such as gravel or slag used to form concrete or pavement.	75.4	495.0	495.0
4009	Guardrails	FY16 reduction \$-257.7; FY16 Service level reduction & efficiencies \$-253.3 Guardrail, posts, and bridge planks.	214.0	189.1	189.1
4010	Culverts	FY16 Services level reduction & efficiencies \$-450.0 FY17 Service level reduction \$-75.0 Culverts.	207.1	44.3	44.3
4011	Electrical	FY16 Service Level reduction & efficiencies \$-56.0 FY17 Reduce Commodities \$-100.0 Electrical parts for repairing signals.	390.0	159.2	159.2
4012	Plumbing	Parts and supplies for plumbing repairs.	2.9	25.9	25.9
4013	Lube Oils/Grease/Solvents	Lube oil, grease and fuel additives.	102.5	19.3	19.3
4014	Bottled Gas	Bottled gas.	31.9	27.4	27.4
4015	Parts and Supplies	Parts and supplies for leased or other equipment not serviced by State Equipment Fleet.	1,182.6	866.9	866.9
4015	Parts and Supplies	Blades, cutting edges, chains and cross-links. FY16 reduction \$-195.0 FY2016 unallocated reduction \$-70.0	0.0	567.9	567.9

Line Item Detail (1676)
Department of Transportation/Public Facilities
Commodities

Component: Northern Region Highways and Aviation (2068)

Object Class	Servicing Agency	Explanation	FY2019 Actuals	FY2020 Management Plan	FY2021 Governor
4000 Commodities Detail Totals			8,595.2	9,743.9	9,743.9
		FY17 Service level reduction \$-25.0			
4016	Paint/Preservatives	Traffic paint, beads and solvent for striping highways, airports and crosswalks.	18.4	241.1	241.1
		FY2016 reduction (\$400.0) FY17 reduction \$-233.6			
4017	Sand	Sand used with chemicals for ice control on roadway surfaces.	303.4	235.7	235.7
4018	Surface Chemicals	Winter chemicals for highways and airport ice control. Summer chemicals for dust control on airports and highways.	831.5	1,710.1	1,610.1
4019	Small Tools/Minor Equipment	Small tools and minor equipment such as air wrenches and water pumps.	265.6	152.5	152.5
4020	Equipment Fuel	Diesel fuel and unleaded gasoline purchased in bulk for equipment and vehicle usage. Funding based on 1,476,553 gallons @ \$2.82. See 73421 for fuel purchased by credit card.	4,010.1	3,833.7	3,833.7
		FY16 Amendment; transfer \$-374.1 Southcoast Region, FY16 Service level reduction & efficiencies \$-100.0, FY16 Cost control and efficiency measures \$-42.0			
		FY17 Service level reduction \$-26.2			

Line Item Detail (1676)
Department of Transportation/Public Facilities
Capital Outlay

Component: Northern Region Highways and Aviation (2068)

Line Number	Line Name		FY2019 Actuals	FY2020 Management Plan	FY2021 Governor
5000	Capital Outlay		126.0	0.0	0.0
Object Class	Servicing Agency	Explanation	FY2019 Actuals	FY2020 Management Plan	FY2021 Governor
5000 Capital Outlay Detail Totals			126.0	0.0	0.0
5002	Structures and Infrastructure	Contractor services for performing maintenance and operations services.	31.5	0.0	0.0
5004	Equipment		93.9	0.0	0.0
5999	DOT/PF Personal Services	T&E's incorrectly coded to 5999/should be personal services object 1000	0.6	0.0	0.0

Revenue Detail (1681)
Department of Transportation/Public Facilities

Component: Northern Region Highways and Aviation (2068)

Revenue Type (OMB Fund Code) Revenue Source	Component	Comment	FY2019 Actuals	FY2020 Management Plan	FY2021 Governor
5002 Fed Rcpts (1002 Fed Rcpts)			0.0	122.4	122.4
5017 Federal Transportation - Miscellaneous Grants		Reimbursement for requests from the Federal Aviation Administration, Bureau of Land Management and other federal agencies for snow removal at their sites on Northern Region airports and campgrounds on federal land and special emergency requests from federal agencies, i.e. U.S. Air Force.	0.0	122.4	122.4
5005 GF/Prgm (1005 GF/Prgm)			328.8	401.0	404.4
5106 Program Receipts Charges for Services - Rent and Royalties		Security Screening and Fingerprinting Fees and Damages Recovered.	0.0	34.1	34.1
5111 Program Receipts Transportation - Charges for Services		Receipts collected for repair activities on non-state signal controllers, traffic striping on city streets, travelers assistance on remote roadways, sale of scrap metal, etc. Reimbursement is based on actual cost of service. See AS 37.05.146(a) for the definition of general fund program receipts.	328.8	366.9	370.3
5113 Program Receipts Natural Resources - Rent and Royalties		Revenue distributed from the department's rural airport leasing program operated by the Statewide Aviation component under various sections of the Alaska Aeronautic Act including AS 02.15.090 and Title 17 of the Alaska Administrative Code. AS 37.05.146(c)(68) defines charges, rentals, and fees for airport or air navigation facility contracts, leases and other arrangements as non-general fund	0.0	0.0	0.0

Revenue Detail (1681)
Department of Transportation/Public Facilities

Component: Northern Region Highways and Aviation (2068)

Revenue Type (OMB Fund Code) Revenue Source	Component	Comment	FY2019 Actuals	FY2020 Management Plan	FY2021 Governor
program receipts.					
5007 I/A Rcpts (1007 I/A Rcpts)			105.6	151.1	158.2
5301 Inter-Agency Receipts	Admin - Department-wide	Reimbursable service agreement to provide snow plowing at Enterprise Technology System (ETS) Communication sites.	1.2	10.0	10.0
5301 Inter-Agency Receipts	FishGm - Department-wide	Reimbursable service agreement for maintenance in the Chitina area.	10.7	10.0	10.0
5301 Inter-Agency Receipts	Trans - Facilities Services (3195)	Reimbursable services agreement for Highways and Aviation staff to provide assistance in building maintenance duties when Northern Region facilities does not have adequate staff available, including electrical and other maintenance work at the Deadhorse Combined facility.	73.8	80.0	80.0
5301 Inter-Agency Receipts	Trans - Northern Highways & Aviation (2068)	Reimbursement from other state agencies operating budgets for services upon request.	19.9	51.1	58.2
5061 CIP Rcpts (1061 CIP Rcpts)			8,169.2	7,279.4	7,238.0
5351 Capital Improvement Project Inter-Agency		Capital improvement project receipts for work in direct support of capital projects.	7,558.1	6,670.1	6,490.5
5351 Capital Improvement Project Inter-Agency		Recovery of indirect costs from the capital budget via the department's Indirect Cost Allocation Plan (ICAP).	611.1	609.3	747.5
5108 Stat Desig (1108 Stat Desig)			7.7	63.4	64.8
5206 Statutory Designated Program Receipts - Contracts		Reimbursement from non-state and non-federal entities under contractual agreements requesting Department of Transportation and Public Facilities to provide	7.7	63.4	64.8

Revenue Detail (1681)
Department of Transportation/Public Facilities

Component: Northern Region Highways and Aviation (2068)

Revenue Type (OMB Fund Code) Revenue Source	Component	Comment	FY2019 Actuals	FY2020 Management Plan	FY2021 Governor
		maintenance services such as after-hours airport call out and plowing open roads during winter months. Also includes roadway/roadside sweeping for community events. Reimbursement is based on actual costs.			
5244 AirptLease (1244 Rural Air)			1,782.1	1,175.4	1,388.1
5244 Rural Airport Lease Receipts		Revenue distributed from the department's rural airport leasing program operated by the Statewide Aviation component under various sections of the Alaska Aeronautic Act including AS 02.15.090 and Title 17 of the Alaska Administrative Code. AS 37.05.146(c)(68) defines charges, rentals, and fees for airport or air navigation facility contracts, leases and other arrangements as non-general fund program receipts.	1,782.1	1,175.4	1,388.1
6004 Gen Fund (1004 Gen Fund)			6.8	0.0	0.0
6019 General Fund Transportation - Chrgs for Srvc Misc		Coding error. Revenue for fingerprinting services that should have been charged to object 5106 - Statutory Designated Program Receipts.	0.1	0.0	0.0
6046 General Fund - Prior Year Reimbursement Recovery		Credits from vendors for returned commodities.	6.7	0.0	0.0

Inter-Agency Services (1682)
Department of Transportation/Public Facilities

Component: Northern Region Highways and Aviation (2068)

				FY2019 Actuals	FY2020 Management Plan	FY2021 Governor
Component Totals				17,793.3	11,787.1	11,799.1
With Department of Administration				421.7	351.5	363.5
With Department of Fish and Game				1.0	0.0	0.0
With Department of Natural Resources				25.3	13.5	13.5
With Department of Transportation/Public Facilities				17,311.8	11,288.1	11,288.1
With Department of Environmental Conservation				5.9	4.0	4.0
With Department of Labor and Workforce Development				0.1	0.0	0.0
With Department of Law				27.5	130.0	130.0
Object Class	Servicing Agency	Explanation	FY2019 Actuals	FY2020 Management Plan	FY2021 Governor	
3015 Inter-Agency Conservation/Environmental	Admin - Department-wide	Reimbursable Services Agreement with ETS for Two Way Radio Maintenance.	32.0	0.0	0.0	
3015 Inter-Agency Conservation/Environmental	FishGm - Department-wide	Reimbursable Service Agreement for project support services.	1.0	0.0	0.0	
3015 Inter-Agency Conservation/Environmental	NatRes - Department-wide	Annual water usage permits paid to Department of Natural Resources.	16.3	5.2	5.2	
3015 Inter-Agency Conservation/Environmental	Trans - Northern Design & Eng Svcs (2299)	Technical services including right of way, materials and design services.	0.0	60.0	60.0	
3015 Inter-Agency Conservation/Environmental	EnvCon - Department-wide	Stormwater permit fees paid to Department of Environmental Conservation.	5.9	4.0	4.0	
3015 Inter-Agency Conservation/Environmental	NatRes - Department-wide	Reimbursable services agreement with Department of Natural Resources for maintenance of the Birch Lake Wayside.	9.0	8.3	8.3	
3017 Inter-Agency Information Technology Non-Telecommunications	Admin - Department-wide	Computer services provided by Department of Administration, Division of Enterprise Technology Services, such as central server,	163.2	52.5	58.5	

Inter-Agency Services (1682)
Department of Transportation/Public Facilities

Component: Northern Region Highways and Aviation (2068)

Object Class	Servicing Agency	Explanation	FY2019 Actuals	FY2020 Management Plan	FY2021 Governor
		data storage, printing, network services, open connect and task order system.			
3018	Inter-Agency Information Technology Telecommunications	Admin - Department-wide	42.2	176.5	182.5
		Telecommunications services provided by the Department of Administration, Enterprise Technology Services, such as basic telephone services, equipment and features, dedicated voice/data line service, statewide paging, two-way radio, and video conferencing.			
3020	Inter-Agency Building Maintenance	Labor - Department-wide	0.1	0.0	0.0
3020	Inter-Agency Building Maintenance	Trans - Northern Region Facilities (2069)	0.0	26.2	26.2
		Reimbursable services agreement's with Northern Region Facilities where Highways and Aviation employees are either not available or need expertise in electrical or other facilities.			
3021	Inter-Agency Mail	Admin - Department-wide	1.8	2.7	2.7
		Chargeback fees for central mail services such as mailing vendor payments and payroll warrants.			
3022	Inter-Agency Human Resources	Admin - Department-wide	0.0	6.4	6.4
		Chargeback fees for human resource services such as labor relations, position classifications and payroll processing.			
3024	Inter-Agency Legal	Law - Department-wide	27.5	130.0	130.0
		Legal services provided by the Department of Law with added litigations in settling disputes with private and corporate landowners/lessees where gravel stockpiles are in contention and with land ownership issues with native allotments.			
3026	Inter-Agency Insurance	Admin - Department-wide	50.2	110.2	110.2
		Liability insurance for rural airport facilities.			
3027	Inter-Agency Financial	Admin - Department-wide	130.4	2.5	2.5
		Chargeback fees for			

Inter-Agency Services (1682)
Department of Transportation/Public Facilities

Component: Northern Region Highways and Aviation (2068)

Object Class		Servicing Agency	Explanation	FY2019 Actuals	FY2020 Management Plan	FY2021 Governor
3028	Inter-Agency Americans with Disabilities Act Compliance	Admin - Department-wide	AKPAY/IRIS/ALDER. Chargeback fees for the statewide coordinator for the Americans with Disabilities Act (ADA).	1.9	0.7	0.7
3031	Inter-Agency Construction	Trans - Northern Construction & CIP (2295)		2.3	0.0	0.0
3035	Inter-Agency Other Equipment/Machinery	Trans - State Equipment Fleet (2791)	State Equipment Fleet employees working as equipment operators.	0.0	144.1	144.1
3037	State Equipment Fleet	Trans - State Equipment Fleet (2791)	Operating and replacement fees paid to State Equipment Fleet (SEF) for over 1,300 vehicles/equipment. Includes credit/reduction for usage on federal projects. Also includes repair costs of X class vehicles. FY16 Deadhorse Airport extended operations increment; \$16.1 GF, \$16.2 GF/PR FY16 reduction to remove funding for Hwy & A/P Surface Maintenance \$-350.0; FY16 reduction to reduce fleet \$-566.7; FY16 Service level reductions \$-1,277.1; FY16 Cost Control & Efficiency Measures \$-340.0 FY17 Service Level Reduction \$-944.1 FY17 GF Program Receipts to Mitigate GF Reduction in FY16 \$-235.9	17,309.5	10,946.9	10,946.9
3037	State Equipment Fleet	Trans - State Equipment Fleet (2791)	SEF Fuel A87 Allowed Credit card vehicle fuel purchases through State Equipment Fleet. Funding based on 20,733 gallons @ \$4.86 = \$100.7. Deadhorse Airport extended operations increment; \$16.6 GF, \$16.6 GF/PR FY2016 Cost Control & Efficiency Measures \$-23.0.	0.0	110.9	110.9

Personal Services Expenditure Detail
Department of Transportation/Public Facilities

Scenario: FY2021 Governor (16414)
Component: Northern Region Highways and Aviation (2068)
RDU: Highways, Aviation and Facilities (408)

PCN	Job Class Title	Time Status	Retire Code	Barg Unit	Location	Salary Sched	Range / Step	Comp Months	Split / Count	Annual Salaries	COLA	Premium Pay	Annual Benefits	Total Costs	UGF Amount
25-0163	Engineer/Architect II	FT	A	GP	Fairbanks	203	23D / E	12.0		95,771	1,412	7,267	56,956	161,406	0
25-1170	Rural Airport Foreman	FT	A	LL	Cordova	2EE	49O / P	12.0		96,958	0	13,659	59,659	170,276	125,681
25-1171	Equipment Operator, Journey II	PT	A	LL	Thompson Pass	2FF	53C / D	8.0		38,951	0	4,147	28,421	71,519	17,880
25-1173	Equipment Operator, Journey II	FT	A	LL	Cordova	2EE	53P	12.0		79,378	0	11,451	52,329	143,158	128,842
25-1175	E/Op Jrny III	FT	A	LL	Cordova	2EE	52C / D	12.0		61,213	0	8,688	44,578	114,479	97,307
25-1176	E/Op Jrny III	FT	A	LL	Cordova	2EE	52O	12.0		81,791	0	11,799	53,352	146,942	124,901
25-1178	Equipment Operator Foreman I	FT	A	LL	Saint Marys	2II	51K	12.0		78,942	0	11,388	52,145	142,475	108,409
25-1181	Equipment Operator, Journey II	FT	A	LL	Saint Marys	2II	53J / K	12.0		70,361	0	9,864	48,402	128,627	122,196
25-1225	Stock & Parts Services II	FT	A	LL	Fairbanks	2EE	55M	12.0		63,948	0	147	42,427	106,522	22,647
25-1241	Administrative Officer I	FT	A	GP	Fairbanks	203	17E / F	12.0		67,299	922	0	43,718	111,939	111,939
25-1253	Stock & Parts Services III	FT	A	LL	Nome	2II	54N / O	12.0		73,948	0	3,983	47,552	125,483	37,645
25-1260	Stock & Parts Services III	PT	A	LL	Valdez	2FF	54N	10.5		61,850	0	3,823	40,676	106,349	53,175
25-1458	Equipment Operator, Journey II	FT	A	LL	Fairbanks	2EE	53O	12.0		76,654	0	11,058	51,175	138,887	78,818
25-1472	Equipment Operator, Journey II	FT	A	LL	Saint Marys	2II	53E / F	11.5		62,119	0	6,948	43,490	112,557	90,755
25-1476	Engineering Associate	FT	A	GP	Fairbanks	203	21L / M	12.0		103,638	1,527	7,782	60,060	173,007	0
25-1562	Equipment Operator, Journey I	FT	A	LL	Fairbanks	2EE	54C / D	12.0		54,019	0	7,689	41,543	103,251	20,650
25-1574	Env Prgm Spcii	FT	A	GP	Fairbanks	203	18L	12.0		82,680	1,133	0	49,415	133,228	0
25-1583	Mts/EI Jrny II	FT	A	LL	Fairbanks	2EE	51F / J	12.0		71,917	0	10,092	49,062	131,071	68,642
25-1613	Equipment Operator, Journey II	FT	A	LL	Valdez	2FF	53F / J	12.0		64,241	0	9,123	45,860	119,224	58,110
25-1670	Equipment Operator, Journey II	FT	A	LL	Fairbanks	2EE	53N	12.0		74,034	0	10,680	50,064	134,778	6,739
25-1671	E/Op Jrny III	FT	A	LL	Nome	2II	52B / C	12.0		62,402	0	8,979	45,126	116,507	85,749
25-1681	E/Op Subjrny II	FT	A	LL	Fairbanks	2EE	56A / B	12.0		46,193	0	6,474	38,194	90,861	27,258
25-1706	E/Op Subjrny I	PT	A	LL	Cantwell	2HH	58B	6.0		22,325	0	3,220	18,805	44,350	0
25-1734	Env Imp Any III	FT	A	GP	Fairbanks	203	19D / E	12.0		73,923	1,165	11,109	50,286	136,483	0
25-1783	Office Assistant III	FT	A	GP	Nome	237	11B / C	12.0		53,667	763	2,009	39,413	95,852	95,852
25-1788	Engineering Assistant II	FT	A	GG	Fairbanks	203	19M	12.0		91,212	1,442	14,034	57,773	164,461	0
25-1818	Engineering Assistant II	FT	A	GP	Fairbanks	203	19A / B	12.0		67,206	1,058	10,026	47,397	125,687	0
25-1831	E/Op Subjrny I	PT	A	LL	Tazlina	2FF	58B	8.0		28,532	0	4,630	24,741	57,903	20,266
25-1901	Maint & OPS Spr	FT	A	SS	Tok	200	21A / B	12.0		79,687	0	0	48,346	128,033	38,410
25-1902	Maint & OPS Spr	FT	A	SS	Fairbanks	203	21D / E	12.0		91,035	0	0	52,550	143,585	43,076

Note: If a position is split, an asterisk (*) will appear in the Split/Count column. If the split position is also counted in the component, two asterisks (**) will appear in this column. [No valid job title] appearing in the Job Class Title indicates that the PCN has an invalid class code or invalid range for the class code effective date of this scenario.

Personal Services Expenditure Detail
Department of Transportation/Public Facilities

Scenario: FY2021 Governor (16414)
Component: Northern Region Highways and Aviation (2068)
RDU: Highways, Aviation and Facilities (408)

PCN	Job Class Title	Time Status	Retire Code	Barg Unit	Location	Salary Sched	Range / Step	Comp Months	Split / Count	Annual Salaries	COLA	Premium Pay	Annual Benefits	Total Costs	UGF Amount
25-1903	Maint & OPS Spr	FT	A	SS	Fairbanks	203	21P / Q	12.0		122,884	0	0	64,347	187,231	89,216
25-1904	Administrative Assistant III	FT	A	GP	Tok	200	15D / E	12.0		54,107	770	2,045	39,589	96,511	81,745
25-1905	Administrative Assistant III	FT	A	GP	Fairbanks	203	15C / D	12.0		53,543	762	2,031	39,375	95,711	81,354
25-1907	Office Assistant III	FT	A	GP	Cordova	211	11L	12.0		55,008	783	2,115	39,949	97,855	97,855
25-1908	Equipment Operator Foreman I	FT	A	LL	Galena	2JJ	51P	12.0		94,289	0	16,390	59,682	170,361	102,217
25-1909	Equipment Operator, Journey II	FT	A	LL	Galena	2JJ	53A / B	12.0		59,571	0	10,443	44,619	114,633	103,170
25-1911	Equipment Operator, Journey II	FT	A	LL	Trimms Camp	2FF	53J / K	12.0		65,802	0	9,438	46,555	121,795	60,898
25-1914	Engineer/Architect IV	FT	A	SS	Fairbanks	203	26L / M	12.0		145,748	0	0	72,267	218,015	218,015
25-1915	Equipment Operator Foreman I	FT	A	LL	Fairbanks	2EE	51L	12.0		77,673	0	11,205	51,607	140,485	70,243
25-1916	Mts/Tces Jrnyii	FT	A	LL	Fairbanks	2EE	51F	12.0		69,958	0	10,092	48,337	128,387	82,964
25-1917	Equipment Operator, Journey II	FT	A	LL	Fairbanks	2EE	53E / F	12.0		61,934	0	8,697	44,848	115,479	23,096
25-1918	Equipment Operator, Journey I	FT	A	LL	Fairbanks	2EE	54B / C	12.0		51,914	0	7,449	40,674	100,037	20,007
25-1919	Equipment Operator Foreman II	FT	A	LL	Fairbanks	2EE	50L / M	12.0		84,432	0	12,180	54,471	151,083	52,879
25-1920	Equipment Operator Foreman I	FT	A	LL	Fairbanks	2EE	51M	12.0		80,439	0	11,604	52,779	144,822	65,170
25-1921	Equipment Operator, Journey II	FT	A	LL	Cantwell	2HH	53J	12.0		67,400	0	9,723	47,253	124,376	74,626
25-1924	Equipment Operator, Journey II	FT	A	LL	Fairbanks	2EE	53D / E	12.0		58,614	0	8,421	43,516	110,551	44,220
25-1926	Equipment Operator, Journey II	FT	A	LL	Fairbanks	2EE	53J	12.0		64,447	0	9,297	46,001	119,745	59,873
25-1927	Equipment Operator Foreman I	FT	A	LL	Fairbanks	2EE	51L	12.0		77,673	0	11,205	51,607	140,485	49,170
25-1928	Equipment Operator, Journey I	FT	A	LL	Fairbanks	2EE	54C / D	12.0		53,444	0	7,689	41,330	102,463	0
25-1929	Equipment Operator Foreman I	FT	A	LL	Fairbanks	2EE	51L / M	12.0		78,480	0	11,205	51,906	141,591	56,636
25-1930	Equipment Operator, Journey II	FT	A	LL	Fairbanks	2EE	53M	12.0		71,497	0	10,314	48,989	130,800	65,400
25-1931	Equipment Operator, Journey II	FT	A	LL	Fairbanks	2EE	53L	12.0		69,064	0	9,963	47,958	126,985	63,493
25-1932	Equipment Operator	FT	A	LL	Fairbanks	2EE	51N / O	12.0		85,044	0	12,018	54,638	151,700	60,680

Note: If a position is split, an asterisk (*) will appear in the Split/Count column. If the split position is also counted in the component, two asterisks (**) will appear in this column.
[No valid job title] appearing in the Job Class Title indicates that the PCN has an invalid class code or invalid range for the class code effective date of this scenario.

Personal Services Expenditure Detail
Department of Transportation/Public Facilities

Scenario: FY2021 Governor (16414)
Component: Northern Region Highways and Aviation (2068)
RDU: Highways, Aviation and Facilities (408)

PCN	Job Class Title	Time Status	Retire Code	Barg Unit	Location	Salary Sched	Range / Step	Comp Months	Split / Count	Annual Salaries	COLA	Premium Pay	Annual Benefits	Total Costs	UGF Amount
25-1933	Foreman I Equipment Operator, Journey I	FT	A	LL	Fairbanks	2EE	54B / C	12.0		52,468	0	7,449	40,880	100,797	50,399
25-1934	Equipment Operator, Journey II	FT	A	LL	Montana Creek	2EE	53M / N	12.0		72,977	0	10,314	49,537	132,828	79,697
25-1935	Equipment Operator, Journey II	FT	A	LL	Fairbanks	2EE	53F	12.0		62,263	0	8,982	45,075	116,320	58,160
25-1936	Equipment Operator, Journey II	FT	A	LL	Fairbanks	2EE	53M / N	12.0		72,765	0	10,314	49,459	132,538	66,269
25-1937	Equipment Operator, Journey II	FT	A	LL	Fairbanks	2EE	53D / E	12.0		59,172	0	8,421	43,723	111,316	61,224
25-1938	Equipment Operator, Journey I	PT	A	LL	Delta Junction	2FF	54B / C	8.0		35,908	0	3,795	27,164	66,867	40,120
25-1939	Equipment Operator, Journey II	FT	A	LL	Paxson	2FF	53D / E	12.0		60,388	0	8,562	44,225	113,175	56,588
25-1940	E/Op Subjrnly I	PT	A	LL	Fairbanks	2EE	58D / E	8.0		29,977	0	3,217	24,753	57,947	0
25-1941	Equipment Operator, Journey II	FT	A	LL	Fairbanks	2EE	53O	12.0		76,654	0	11,058	51,175	138,887	69,444
25-1942	Equipment Operator, Journey I	PT	A	LL	Nenana	2HH	54A / B	9.0		40,469	0	3,820	30,419	74,708	44,825
25-1943	Equipment Operator, Journey II	FT	A	LL	Fairbanks	2EE	53O	12.0		76,654	0	11,058	51,175	138,887	69,444
25-1944	Equipment Operator, Journey I	FT	A	LL	Fairbanks	2EE	54B / C	12.0		52,399	0	7,449	40,854	100,702	55,386
25-1946	Equipment Operator, Journey I	FT	A	LL	Fairbanks	2EE	54C / D	12.0		54,019	0	7,689	41,543	103,251	51,626
25-1947	Equipment Operator Foreman I	FT	A	LL	Delta Junction	2FF	51N	12.0		84,286	0	9,119	53,284	146,689	73,345
25-1948	Equipment Operator, Journey II	FT	A	LL	Delta Junction	2FF	53D / E	12.0		59,432	0	8,562	43,871	111,865	67,119
25-1949	Equipment Operator, Journey II	FT	A	LL	Delta Junction	2FF	53F / J	12.0		65,151	0	9,123	46,197	120,471	60,236
25-1950	Equipment Operator, Journey II	FT	A	LL	Delta Junction	2FF	53N / O	12.0		75,557	0	10,821	50,681	137,059	82,235
25-1951	Equipment Operator, Journey II	FT	A	LL	Delta Junction	2FF	53P	12.0		80,356	0	11,592	52,744	144,692	86,815
25-1952	Equipment Operator Foreman I	FT	A	LL	Cantwell	2HH	51N / O	12.0		87,873	0	12,444	55,844	156,161	54,656
25-1954	Administrative Assistant III	FT	A	GP	Fairbanks	203	15G / J	12.0		60,932	867	2,339	42,226	106,364	85,091

Note: If a position is split, an asterisk (*) will appear in the Split/Count column. If the split position is also counted in the component, two asterisks (**) will appear in this column.
 [No valid job title] appearing in the Job Class Title indicates that the PCN has an invalid class code or invalid range for the class code effective date of this scenario.

Personal Services Expenditure Detail
Department of Transportation/Public Facilities

Scenario: FY2021 Governor (16414)
Component: Northern Region Highways and Aviation (2068)
RDU: Highways, Aviation and Facilities (408)

PCN	Job Class Title	Time Status	Retire Code	Barg Unit	Location	Salary Sched	Range / Step	Comp Months	Split / Count	Annual Salaries	COLA	Premium Pay	Annual Benefits	Total Costs	UGF Amount
25-1955	Equipment Operator, Journey II	FT	A	LL	Nenana	2HH	53C / D	12.0		59,554	0	8,580	43,923	112,057	56,029
25-1957	Equipment Operator Foreman I	FT	A	LL	Tok	2FF	51L / M	12.0		81,186	0	11,346	52,960	145,492	72,746
25-1958	Equipment Operator, Journey II	FT	A	LL	Tok	2FF	53M	12.0		72,474	0	10,455	49,403	132,332	72,783
25-1959	Equipment Operator, Journey II	PT	A	LL	Tok	2FF	53C / D	8.0		39,182	0	4,147	28,507	71,836	43,102
25-1960	Equipment Operator, Journey II	FT	A	LL	Manley Hot Springs	2HH	53B / C	12.0		58,582	0	8,322	43,468	110,372	77,260
25-1961	Equipment Operator, Journey I	PT	A	LL	Healy	2HH	54B / C	6.0		27,849	0	3,937	21,117	52,903	0
25-1962	Equipment Operator, Journey II	FT	A	LL	Tok	2FF	53D / E	12.0		60,707	0	8,562	44,344	113,613	68,168
25-1964	Equipment Operator, Journey I	FT	A	LL	Montana Creek	2EE	54B / C	12.0		52,607	0	7,449	40,931	100,987	60,592
25-1965	E/Op Jrny III	FT	A	LL	Deadhorse	2JJ	52P	12.0		89,610	0	12,927	56,666	159,203	111,442
25-1966	Equipment Operator, Journey I	PT	A	LL	Tok	2FF	54C / D	11.5		52,519	0	3,915	38,811	95,245	52,385
25-1967	E/Op Subjrny II	PT	A	LL	Delta Junction	2FF	56B / C	11.5		45,759	0	3,406	36,118	85,283	0
25-1968	Mts/Tces Jrnyii	FT	A	LL	Fairbanks	2EE	51E / F	12.0		69,309	0	9,771	47,978	127,058	0
25-1969	Equipment Operator, Journey I	FT	A	LL	Manley Hot Springs	2HH	54C / D	12.0		56,541	0	8,115	42,635	107,291	75,104
25-1971	Equipment Operator, Journey II	FT	A	LL	Manley Hot Springs	2HH	53C / D	12.0		60,479	0	8,580	44,266	113,325	67,995
25-1973	Equipment Operator, Journey I	PT	A	LL	Fairbanks	2EE	54A / B	8.0		34,357	0	5,411	27,188	66,956	0
25-1975	Equipment Operator, Journey II	FT	A	LL	Delta Junction	2FF	53N / O	12.0		75,339	0	10,821	50,600	136,760	0
25-1977	Equipment Operator, Journey II	FT	A	LL	Tok	2FF	53N	12.0		75,011	0	10,821	50,478	136,310	0
25-1979	Equipment Operator, Journey II	FT	A	LL	Fairbanks	2EE	53F / J	12.0		63,355	0	8,982	45,480	117,817	64,799
25-1980	E/Op Jrny III	FT	A	LL	Livengood	2HH	52N	12.0		81,936	0	11,820	53,413	147,169	0
25-1981	Equipment Operator, Journey II	FT	A	LL	Livengood	2HH	53P	12.0		82,331	0	11,877	53,581	147,789	0
25-1982	E/Op Jrny III	FT	A	LL	Manley Hot Springs	2HH	52A / B	12.0		60,731	0	8,574	44,357	113,662	56,831

Note: If a position is split, an asterisk (*) will appear in the Split/Count column. If the split position is also counted in the component, two asterisks (**) will appear in this column. [No valid job title] appearing in the Job Class Title indicates that the PCN has an invalid class code or invalid range for the class code effective date of this scenario.

Personal Services Expenditure Detail
Department of Transportation/Public Facilities

Scenario: FY2021 Governor (16414)
Component: Northern Region Highways and Aviation (2068)
RDU: Highways, Aviation and Facilities (408)

PCN	Job Class Title	Time Status	Retire Code	Barg Unit	Location	Salary Sched	Range / Step	Comp Months	Split / Count	Annual Salaries	COLA	Premium Pay	Annual Benefits	Total Costs	UGF Amount
25-1983	E/Op Jrny III	PT	A	LL	South Fork	2FF	52D / E	8.0		43,478	0	4,704	30,304	78,486	70,637
25-1985	Equipment Operator, Journey II	FT	A	LL	Livengood	2HH	53J / K	12.0		68,817	0	9,723	47,777	126,317	0
25-1986	Equipment Operator, Journey II	FT	A	LL	Fairbanks	2EE	53L / M	12.0		70,888	0	9,963	48,633	129,484	0
25-1989	Equipment Operator, Journey II	FT	A	LL	Fairbanks	2EE	53K	12.0		66,714	0	9,624	46,962	123,300	0
25-1990	E/Op Jrny III	FT	A	LL	Nenana	2HH	52L	12.0		76,612	0	11,052	51,157	138,821	0
25-1991	Equipment Operator, Journey II	FT	A	LL	Cantwell	2HH	53M	12.0		74,450	0	8,055	49,246	131,751	52,700
25-1992	Equipment Operator, Journey II	FT	A	LL	Tok	2FF	53N	12.0		75,011	0	8,115	49,476	132,602	0
25-1993	Equipment Operator, Journey II	FT	A	LL	Nenana	2HH	53J / K	12.0		68,628	0	9,723	47,707	126,058	0
25-1994	E/Op Subjrny II	PT	A	LL	Tok	2FF	56B / C	11.5		45,634	0	3,406	36,072	85,112	0
25-1995	E/Op Jrny III	FT	A	LL	Healy	2HH	52F / J	12.0		69,509	0	9,999	48,136	127,644	63,822
25-1996	Equipment Operator, Journey I	FT	A	LL	Fairbanks	2EE	54F / J	12.0		59,609	0	12,694	45,467	117,770	0
25-1997	Equipment Operator, Journey II	FT	A	LL	Healy	2HH	53J / K	12.0		69,572	0	9,723	48,057	127,352	63,676
25-1998	Equipment Operator, Journey II	PT	A	LL	Healy	2HH	53D / E	6.0		30,903	0	4,423	22,428	57,754	0
25-1999	Equipment Operator, Journey II	FT	A	LL	Cantwell	2HH	53C / D	12.0		60,633	0	8,580	44,323	113,536	56,768
25-2000	Equipment Operator, Journey II	FT	A	LL	Cantwell	2HH	53J	12.0		67,400	0	9,723	47,253	124,376	87,063
25-2001	Equipment Operator, Journey II	FT	A	LL	Cantwell	2HH	53J / K	12.0		68,722	0	9,723	47,742	126,187	37,856
25-2002	E/Op Jrny III	FT	A	LL	Northway	2FF	52N / O	12.0		81,715	0	11,535	53,226	146,476	95,209
25-2003	Equipment Operator, Journey II	PT	A	LL	Northway	2FF	53B / C	6.0		28,378	0	4,018	21,343	53,739	0
25-2005	Equipment Operator, Journey II	FT	A	LL	Northway	2FF	53N	12.0		75,011	0	10,821	50,478	136,310	81,786
25-2006	Mts/EI Jrny II	FT	A	LL	Utqiagvik	2JJ	51A / B	12.0		65,648	0	9,294	46,445	121,387	48,555
25-2008	Equipment Operator, Journey II	FT	A	LL	Livengood	2HH	53E / F	12.0		63,488	0	9,123	45,581	118,192	70,915
25-2009	Equipment Operator, Journey I	PT	A	LL	South Fork	2FF	54B	8.0		35,076	0	3,795	26,855	65,726	59,153
25-2010	Equipment Operator,	PT	A	LL	South Fork	2FF	53E	8.0		40,843	0	4,419	29,223	74,485	67,037

Note: If a position is split, an asterisk (*) will appear in the Split/Count column. If the split position is also counted in the component, two asterisks (**) will appear in this column. [No valid job title] appearing in the Job Class Title indicates that the PCN has an invalid class code or invalid range for the class code effective date of this scenario.

Personal Services Expenditure Detail
Department of Transportation/Public Facilities

Scenario: FY2021 Governor (16414)
Component: Northern Region Highways and Aviation (2068)
RDU: Highways, Aviation and Facilities (408)

PCN	Job Class Title	Time Status	Retire Code	Barg Unit	Location	Salary Sched	Range / Step	Comp Months	Split / Count	Annual Salaries	COLA	Premium Pay	Annual Benefits	Total Costs	UGF Amount
25-2011	Journey II Equipment Operator, Journey II	PT	A	LL	South Fork	2FF	53B / C	8.0		38,036	0	4,018	28,034	70,088	63,079
25-2012	Equipment Operator, Journey II	PT	A	LL	Eagle	2FF	53J	7.0		38,164	0	4,719	26,784	69,667	62,700
25-2013	E/Op Jrny III	FT	A	LL	Eagle	2FF	52K / L	12.0		72,645	0	10,404	49,448	132,497	119,247
25-2014	Equipment Operator, Journey II	PT	A	LL	Eagle	2FF	53K	7.0		39,486	0	4,882	27,334	71,702	64,532
25-2017	E/Op Subjrny II	FT	A	LL	Fairbanks	2EE	56B / C	12.0		46,437	0	6,681	38,361	91,479	0
25-2018	E/Op Subjrny II	PT	A	LL	Nenana	2HH	56J / K	11.0		54,196	0	4,264	38,783	97,243	0
25-2019	Equipment Operator, Journey I	FT	A	LL	Sag River	2JJ	54C / D	12.0		59,431	0	8,397	43,810	111,638	72,565
25-2021	Equipment Operator, Journey II	FT	A	LL	Northway	2FF	53C / D	12.0		57,809	0	8,295	43,171	109,275	65,565
25-2022	Equipment Operator, Journey I	FT	A	LL	Fairbanks	2EE	54B / C	12.0		52,330	0	11,173	42,208	105,711	63,427
25-2023	Rural Airport Foreman	FT	A	LL	Deadhorse	2JJ	49M	12.0		93,145	0	13,437	58,164	164,746	41,187
25-2025	Equipment Operator, Journey II	PT	A	LL	Cantwell	2HH	53J	6.0		33,700	0	4,861	23,626	62,187	6,219
25-2026	Equipment Operator, Journey II	FT	A	LL	Dalton Highway	2JJ	53L / M	12.0		71,193	0	9,963	48,746	129,902	0
25-2028	E/Op Jrny III	FT	A	LL	Chandalar (Chandler) Camp	2JJ	52K / L	12.0		76,785	0	10,971	51,191	138,947	63,777
25-2029	E/Op Jrny III	FT	A	LL	Sag River	2JJ	52A / B	12.0		63,067	0	8,856	45,327	117,250	76,213
25-2030	E/Op Jrny III	FT	A	LL	Seven Mile Camp	2JJ	52K / L	12.0		76,470	0	10,971	51,074	138,515	90,035
25-2031	Equipment Operator, Journey II	FT	A	LL	Seven Mile Camp	2JJ	53C / D	12.0		62,434	0	8,862	45,094	116,390	75,654
25-2032	E/Op Jrny III	FT	A	LL	Jim River	2JJ	52F	12.0		71,268	0	10,281	48,892	130,441	78,265
25-2034	E/Op Jrny III	FT	A	LL	Coldfoot Camp	2JJ	52M	12.0		81,188	0	11,712	53,096	145,996	72,998
25-2035	Equipment Operator, Journey II	FT	A	LL	Sag River	2JJ	53O	12.0		81,562	0	11,766	53,255	146,583	95,279
25-2036	Equipment Operator, Journey II	PT	A	LL	Chandalar (Chandler) Camp	2JJ	53F	11.5		64,372	0	9,690	45,340	119,402	65,671
25-2037	Equipment Operator, Journey II	FT	A	LL	Unalakleet	2II	53E / F	11.5		61,872	0	9,264	44,256	115,392	109,622

Note: If a position is split, an asterisk (*) will appear in the Split/Count column. If the split position is also counted in the component, two asterisks (**) will appear in this column.
 [No valid job title] appearing in the Job Class Title indicates that the PCN has an invalid class code or invalid range for the class code effective date of this scenario.

Personal Services Expenditure Detail
Department of Transportation/Public Facilities

Scenario: FY2021 Governor (16414)
Component: Northern Region Highways and Aviation (2068)
RDU: Highways, Aviation and Facilities (408)

PCN	Job Class Title	Time Status	Retire Code	Barg Unit	Location	Salary Sched	Range / Step	Comp Months	Split / Count	Annual Salaries	COLA	Premium Pay	Annual Benefits	Total Costs	UGF Amount
25-2038	Equipment Operator, Journey II	FT	A	LL	Dalton Highway	2JJ	53P	12.0		79,378	0	11,451	52,329	143,158	0
25-2040	Equipment Operator, Journey II	FT	A	LL	Sag River	2JJ	53A / B	12.0		59,355	0	8,355	43,766	111,476	72,459
25-2041	Equipment Operator Foreman I	FT	A	LL	Dalton Highway	2JJ	51P	12.0		89,381	0	12,894	56,569	158,844	0
25-2042	Equipment Operator, Journey II	FT	A	LL	Coldfoot Camp	2JJ	53F / J	12.0		67,899	0	9,690	47,425	125,014	62,507
25-2043	E/Op Jrny III	FT	A	LL	Deadhorse	2JJ	52K	12.0		76,051	0	10,971	50,919	137,941	110,353
25-2044	E/Op Jrny III	FT	A	LL	Utqiagvik	2JJ	52N / O	12.0		84,476	0	12,102	54,459	151,037	120,830
25-2045	Equipment Operator, Journey II	FT	A	LL	Dalton Highway	2JJ	53K	12.0		66,714	0	9,624	46,962	123,300	0
25-2046	E/Op Jrny III	FT	A	LL	Deadhorse	2JJ	52F	12.0		71,268	0	10,281	48,892	130,441	117,397
25-2047	E/Op Jrny III	FT	A	LL	Deadhorse	2JJ	52L	12.0		78,567	0	11,334	51,986	141,887	113,510
25-2048	E/Op Jrny III	FT	A	LL	Deadhorse	2JJ	52N	12.0		83,891	0	12,102	54,242	150,235	120,188
25-2049	Equipment Operator, Journey II	FT	A	LL	Montana Creek	2EE	53F	12.0		62,263	0	8,982	45,075	116,320	69,792
25-2050	E/Op Subjrny II	FT	A	LL	Livengood	2HH	56B / C	12.0		49,952	0	7,080	39,811	96,843	58,106
25-2051	Equipment Operator, Journey II	FT	A	LL	Chandalar (Chandler) Camp	2JJ	53M / N	12.0		76,722	0	11,022	51,187	138,931	76,412
25-2053	Equipment Operator, Journey II	FT	A	LL	Jim River	2JJ	53C / D	12.0		62,742	0	8,862	45,208	116,812	70,087
25-2055	E/Op Subjrny II	FT	A	LL	Jim River	2JJ	56B / C	12.0		51,179	0	7,347	40,364	98,890	49,445
25-2056	Mts/EI Jrny II	FT	A	LL	Deadhorse	2JJ	51J	12.0		77,340	0	11,157	51,466	139,963	0
25-2057	Equipment Operator, Journey II	FT	A	LL	Sag River	2JJ	53J	12.0		69,355	0	10,005	48,081	127,441	82,837
25-2058	Equipment Operator, Journey II	FT	A	LL	Jim River	2JJ	53D / E	12.0		63,521	0	9,129	45,596	118,246	70,948
25-2059	E/Op Subjrny II	FT	A	LL	Seven Mile Camp	2JJ	56B / C	12.0		51,616	0	7,347	40,526	99,489	64,668
25-2060	Equipment Operator, Journey II	FT	A	LL	Livengood	2HH	53N / O	12.0		79,607	0	11,484	52,426	143,517	86,110
25-2061	Equipment Operator Foreman II	FT	A	LL	Deadhorse	2JJ	50K / L	12.0		85,258	0	12,063	54,734	152,055	121,644
25-2062	Equipment Operator, Journey II	FT	A	LL	Chandalar (Chandler) Camp	2JJ	53M	12.0		76,405	0	11,022	51,069	138,496	76,173
25-2064	E/Op Jrny III	FT	A	LL	Deadhorse	2JJ	52L	12.0		78,567	0	11,334	51,986	141,887	113,510

Note: If a position is split, an asterisk (*) will appear in the Split/Count column. If the split position is also counted in the component, two asterisks (**) will appear in this column. [No valid job title] appearing in the Job Class Title indicates that the PCN has an invalid class code or invalid range for the class code effective date of this scenario.

Personal Services Expenditure Detail
Department of Transportation/Public Facilities

Scenario: FY2021 Governor (16414)
Component: Northern Region Highways and Aviation (2068)
RDU: Highways, Aviation and Facilities (408)

PCN	Job Class Title	Time Status	Retire Code	Barg Unit	Location	Salary Sched	Range / Step	Comp Months	Split / Count	Annual Salaries	COLA	Premium Pay	Annual Benefits	Total Costs	UGF Amount
25-2065	Equipment Operator, Journey II	FT	A	LL	Seven Mile Camp	2JJ	53P	12.0		84,286	0	12,159	54,410	150,855	98,056
25-2066	Equipment Operator, Journey II	FT	A	LL	Jim River	2JJ	53J / K	12.0		70,582	0	10,005	48,536	129,123	64,562
25-2068	E/Op Jrny III	FT	A	LL	Deadhorse	2JJ	52D / E	12.0		68,298	0	9,681	47,570	125,549	100,439
25-2069	Equipment Operator, Journey I	FT	A	LL	Manley Hot Springs	2HH	54B / C	12.0		54,867	0	7,875	41,926	104,668	41,867
25-2070	Equipment Operator, Journey II	FT	A	LL	Chandalar (Chandler) Camp	2JJ	53L	12.0		73,971	0	10,671	50,038	134,680	53,872
25-2071	Equipment Operator, Journey II	FT	A	LL	Fairbanks	2EE	53F / J	12.0		64,356	0	8,982	45,851	119,189	47,676
25-2072	Equipment Operator, Journey I	FT	A	LL	Fairbanks	2EE	54C / D	12.0		53,947	0	7,689	41,516	103,152	41,261
25-2073	Administrative Assistant III	FT	A	GP	Fairbanks	203	15B / C	12.0		52,572	747	1,960	38,989	94,268	56,561
25-2074	E/Op Subjrny I	PT	A	LL	Fairbanks	2EE	58E / F	10.0		38,676	0	3,321	31,128	73,125	29,250
25-2075	Mts/Tces Frmn	FT	A	LL	Fairbanks	2EE	50D / E	12.0		69,171	0	9,924	47,983	127,078	0
25-2077	Equipment Operator, Journey I	FT	A	LL	Fairbanks	2EE	54B / C	12.0		52,122	0	7,449	40,751	100,322	40,129
25-2079	Equipment Operator, Journey I	FT	A	LL	Fairbanks	2EE	54D / E	12.0		56,293	0	7,938	42,477	106,708	42,683
25-2080	Equipment Operator, Journey I	FT	A	LL	Sag River	2JJ	54D / E	12.0		60,903	0	8,646	44,447	113,996	0
25-2081	Equipment Operator, Journey I	FT	A	LL	Fairbanks	2EE	54F	12.0		58,666	0	8,463	43,551	110,680	44,272
25-2083	Equipment Operator, Journey II	PT	A	LL	Trimms Camp	2FF	53B / C	9.0		42,753	0	4,018	31,339	78,110	46,866
25-2085	Equipment Operator, Journey II	PT	A	LL	Trimms Camp	2FF	53A / B	9.0		41,641	0	3,894	30,881	76,416	30,566
25-2086	Equipment Operator, Journey II	PT	A	LL	Coldfoot Camp	2JJ	53J / K	11.5		67,882	0	10,005	46,757	124,644	49,858
25-2087	Equipment Operator, Journey II	FT	A	LL	Nenana	2HH	53M	12.0		74,450	0	10,740	50,241	135,431	81,259
25-2088	Equipment Operator, Journey II	FT	A	LL	Fairbanks	2EE	53D / E	12.0		59,331	0	8,421	43,782	111,534	55,767
25-2089	Equipment Operator, Journey II	FT	A	LL	Tok	2FF	53O	12.0		77,631	0	11,199	51,589	140,419	56,168
25-2090	Equipment Operator, Journey II	FT	A	LL	Chandalar (Chandler)	2JJ	53B / C	12.0		59,792	0	8,604	44,020	112,416	44,966

Note: If a position is split, an asterisk (*) will appear in the Split/Count column. If the split position is also counted in the component, two asterisks (**) will appear in this column. [No valid job title] appearing in the Job Class Title indicates that the PCN has an invalid class code or invalid range for the class code effective date of this scenario.

Personal Services Expenditure Detail
Department of Transportation/Public Facilities

Scenario: FY2021 Governor (16414)
Component: Northern Region Highways and Aviation (2068)
RDU: Highways, Aviation and Facilities (408)

PCN	Job Class Title	Time Status	Retire Code	Barg Unit	Location	Salary Sched	Range / Step	Comp Months	Split / Count	Annual Salaries	COLA	Premium Pay	Annual Benefits	Total Costs	UGF Amount
25-2091	Equipment Operator, Journey II	FT	A	LL	Camp Seven Mile Camp	2JJ	53E / F	12.0		66,430	0	9,405	46,776	122,611	49,044
25-2098	Safety Officer	FT	A	GP	Fairbanks	203	18K	12.0		80,067	1,266	12,318	53,010	146,661	131,995
25-2117	Administrative Assistant I	FT	A	GP	Fairbanks	203	12K	12.0		52,884	753	2,034	39,132	94,803	75,842
25-2119	Engineer/Architect III	FT	A	SS	Fairbanks	203	25F	12.0		125,100	0	0	65,167	190,267	19,027
25-2120	Accounting Technician I	FT	A	GP	Fairbanks	203	12F / G	12.0		47,800	705	3,657	37,850	90,012	72,010
25-2122	Administrative Officer II	FT	A	SS	Fairbanks	203	19N	12.0		98,704	0	0	55,390	154,094	154,094
25-2123	Rural Airport Foreman	FT	A	LL	Nome	2II	49K / L	12.0		87,034	0	12,432	55,528	154,994	0
25-2124	Equipment Operator Foreman I	FT	A	LL	Nome	2II	51M / N	12.0		87,239	0	12,585	55,661	155,485	93,291
25-2125	E/Op Jrny III	FT	A	LL	Nome	2II	52L	12.0		77,590	0	11,193	51,572	140,355	112,284
25-2126	Equipment Operator, Journey II	FT	A	LL	Nome	2II	53B / C	12.0		59,038	0	8,463	43,689	111,190	66,714
25-2127	Equipment Operator, Journey II	FT	A	LL	Valdez	2FF	53F / J	12.0		64,241	0	9,123	45,860	119,224	77,496
25-2128	Rural Airport Foreman	FT	A	LL	Kotzebue	2JJ	49L	12.0		90,088	0	12,996	56,869	159,953	159,953
25-2129	E/Op Jrny III	FT	A	LL	Kotzebue	2JJ	52A / B	12.0		62,457	0	8,856	45,101	116,414	104,773
25-2130	E/Op Jrny III	FT	A	LL	Kotzebue	2JJ	52B / C	12.0		64,814	0	9,120	46,071	120,005	108,005
25-2132	Equipment Operator Foreman I	FT	A	LL	Unalakleet	2II	51M	12.0		84,369	0	12,171	54,445	150,985	98,140
25-2135	Equipment Operator, Journey II	FT	A	LL	Nome	2II	53C / D	12.0		61,148	0	8,721	44,566	114,435	68,661
25-2136	Equipment Operator, Journey II	FT	A	LL	Nome	2II	53B / C	12.0		59,858	0	8,463	43,992	112,313	67,388
25-2137	E/Op Jrny III	FT	A	LL	Kotzebue	2JJ	52M	12.0		81,188	0	11,712	53,096	145,996	131,396
25-2138	Administrative Assistant III	FT	A	GP	Nome	237	15C / D	12.0		71,441	1,016	2,701	46,253	121,411	97,129
25-2139	E/Op Jrny III	FT	A	LL	Nome	2II	52M / N	12.0		80,548	0	11,571	52,807	144,926	115,941
25-2140	E/Op Jrny III	FT	A	LL	Nome	2II	52F / J	12.0		71,465	0	10,140	48,913	130,518	104,414
25-2142	Office Assistant III	FT	A	GP	Kotzebue	260	11G	12.0		71,400	1,016	2,746	46,254	121,416	121,416
25-2144	Mts/EI Jrny II	FT	A	LL	Fairbanks	2EE	51B / C	12.0		62,986	0	8,868	45,301	117,155	93,724
25-2146	E/Op Jrny III	FT	A	LL	Nome	2II	52B / C	12.0		63,358	0	8,979	45,480	117,817	94,254
25-2147	E/Op Jrny III	FT	A	LL	Kotzebue	2JJ	52B / C	12.0		64,336	0	9,120	45,894	119,350	107,415
25-2149	Equipment Operator, Journey II	FT	A	LL	Unalakleet	2II	53F / J	12.0		66,285	0	9,549	46,775	122,609	116,479
25-2151	Equipment Operator, Journey II	FT	A	LL	Nome	2II	53F	12.0		66,194	0	9,549	46,741	122,484	73,490
25-2152	Equipment Operator, Journey II	FT	A	LL	Nome	2II	53F	12.0		66,194	0	9,549	46,741	122,484	73,490

Note: If a position is split, an asterisk (*) will appear in the Split/Count column. If the split position is also counted in the component, two asterisks (**) will appear in this column. [No valid job title] appearing in the Job Class Title indicates that the PCN has an invalid class code or invalid range for the class code effective date of this scenario.

Personal Services Expenditure Detail
Department of Transportation/Public Facilities

Scenario: FY2021 Governor (16414)
Component: Northern Region Highways and Aviation (2068)
RDU: Highways, Aviation and Facilities (408)

PCN	Job Class Title	Time Status	Retire Code	Barg Unit	Location	Salary Sched	Range / Step	Comp Months	Split / Count	Annual Salaries	COLA	Premium Pay	Annual Benefits	Total Costs	UGF Amount
25-2153	Equipment Operator, Journey II	FT	A	LL	Nome	2II	53J / K	12.0		70,172	0	9,864	48,332	128,368	77,021
25-2154	E/Op Jrny III	FT	A	LL	Nome	2II	52F	12.0		70,290	0	10,140	48,478	128,908	103,126
25-2162	Maint & OPS Spr	FT	A	SS	Nome	237	21F	12.0		126,408	0	0	65,652	192,060	153,648
25-2164	E/Op Jrny III	FT	A	LL	Valdez	2FF	52N	12.0		79,961	0	11,535	52,576	144,072	93,647
25-2165	E/Op Jrny III	FT	A	LL	Valdez	2FF	52N / O	12.0		80,896	0	11,535	52,923	145,354	123,551
25-2167	Rural Airport Foreman	FT	A	LL	Valdez	2FF	49B / C	12.0		70,190	0	9,858	48,336	128,384	38,515
25-2168	E/Op Jrny III	FT	A	LL	Valdez	2FF	52J / K	12.0		70,803	0	10,053	48,635	129,491	110,067
25-2169	E/Op Jrny III	FT	A	LL	Cordova	2EE	52F	12.0		66,360	0	9,573	46,812	122,745	110,471
25-2170	Equipment Operator Foreman I	FT	A	LL	Thompson Pass	2FF	51O / P	12.0		89,584	0	6,294	54,199	150,077	90,046
25-2171	Equipment Operator, Journey II	PT	A	LL	Slana	2FF	53A / B	8.0		36,854	0	3,894	27,551	68,299	20,490
25-2172	E/Op Jrny III	PT	A	LL	Valdez	2FF	52K	10.0		60,100	0	5,202	39,760	105,062	84,050
25-2173	Equipment Operator, Journey II	PT	A	LL	Thompson Pass	2FF	53B / C	8.0		37,589	0	4,018	27,869	69,476	20,843
25-2174	E/Op Jrny III	FT	A	LL	Ernestine	2FF	52O	12.0		82,768	0	11,940	53,766	148,474	89,084
25-2175	Equipment Operator, Journey II	PT	A	LL	Thompson Pass	2FF	53E	8.0		40,843	0	4,419	29,223	74,485	44,691
25-2176	Equipment Operator, Journey II	FT	A	LL	Ernestine	2FF	53M	12.0		72,474	0	10,455	49,403	132,332	0
25-2177	Equipment Operator, Journey II	FT	A	LL	Slana	2FF	53B / C	12.0		56,830	0	8,037	42,713	107,580	0
25-2178	Equipment Operator, Journey II	FT	A	LL	Ernestine	2FF	53C / D	12.0		57,578	0	8,295	43,086	108,959	0
25-2179	Equipment Operator Foreman I	FT	A	LL	Tazlina	2FF	51O	12.0		87,260	0	12,588	55,670	155,518	77,759
25-2180	Equipment Operator, Journey II	FT	A	LL	Tazlina	2FF	53M / N	12.0		73,214	0	10,455	49,677	133,346	80,008
25-2181	Equipment Operator, Journey II	FT	A	LL	Tazlina	2FF	53B / C	12.0		57,203	0	8,037	42,851	108,091	43,236
25-2182	Equipment Operator, Journey II	FT	A	LL	Tazlina	2FF	53K	12.0		67,691	0	9,765	47,376	124,832	49,933
25-2183	Equipment Operator, Journey II	FT	A	LL	Tazlina	2FF	53P	12.0		80,356	0	11,592	52,744	144,692	86,815
25-2184	Equipment Operator, Journey II	PT	A	LL	Thompson Pass	2FF	53F / J	8.0		42,706	0	4,561	29,965	77,232	0
25-2185	Equipment Operator, Journey II	FT	A	LL	Tazlina	2FF	53B / C	12.0		55,936	0	8,037	42,382	106,355	53,178

Note: If a position is split, an asterisk (*) will appear in the Split/Count column. If the split position is also counted in the component, two asterisks (**) will appear in this column. [No valid job title] appearing in the Job Class Title indicates that the PCN has an invalid class code or invalid range for the class code effective date of this scenario.

Personal Services Expenditure Detail
Department of Transportation/Public Facilities

Scenario: FY2021 Governor (16414)
Component: Northern Region Highways and Aviation (2068)
RDU: Highways, Aviation and Facilities (408)

PCN	Job Class Title	Time Status	Retire Code	Barg Unit	Location	Salary Sched	Range / Step	Comp Months	Split / Count	Annual Salaries	COLA	Premium Pay	Annual Benefits	Total Costs	UGF Amount
25-2186	Equipment Operator, Journey II	FT	A	LL	Tazlina	2FF	53C / D	12.0		57,578	0	8,295	43,086	108,959	0
25-2187	Equipment Operator, Journey II	PT	A	LL	Thompson Pass	2FF	53B / C	8.0		37,365	0	4,018	27,786	69,169	0
25-2188	E/Op Jrny III	FT	A	LL	Paxson	2FF	52A / B	12.0		58,756	0	8,289	43,520	110,565	55,283
25-2189	Equipment Operator, Journey II	PT	A	LL	Ernestine	2FF	53B / C	8.0		37,663	0	4,018	27,896	69,577	0
25-2190	Equipment Operator, Journey II	FT	A	LL	Paxson	2FF	53P	12.0		80,356	0	11,592	52,744	144,692	72,346
25-2191	Equipment Operator, Journey II	FT	A	LL	Nelchina	2FF	53O	12.0		77,631	0	5,599	49,515	132,745	66,373
25-2192	Equipment Operator, Journey II	FT	A	LL	Tazlina	2FF	53C / D	12.0		59,352	0	8,562	43,842	111,756	55,878
25-2193	E/Op Jrny III	FT	A	LL	Nelchina	2FF	52J / K	12.0		70,904	0	5,026	46,811	122,741	73,645
25-2194	Equipment Operator, Journey II	FT	A	LL	Paxson	2FF	53D / E	12.0		61,106	0	8,562	44,491	114,159	57,080
25-2195	Equipment Operator, Journey II	FT	A	LL	Nelchina	2FF	53J	12.0		65,424	0	4,719	44,667	114,810	57,405
25-2196	E/Op Jrny III	FT	A	LL	Slana	2FF	52F	12.0		67,337	0	9,714	47,226	124,277	0
25-2197	Equipment Operator, Journey II	FT	A	LL	Nelchina	2FF	53B / C	12.0		55,862	0	4,018	40,866	100,746	60,448
25-2198	Equipment Operator, Journey II	PT	A	LL	Tazlina	2FF	53A / B	8.0		36,782	0	3,894	27,524	68,200	27,280
25-2199	Equipment Operator, Journey II	FT	A	LL	Delta Junction	2FF	53J / K	12.0		65,896	0	9,438	46,590	121,924	73,154
25-2201	Equipment Operator, Journey II	FT	A	LL	Ernestine	2FF	53J	12.0		65,424	0	9,438	46,415	121,277	60,639
25-2203	Equipment Operator, Journey II	FT	A	LL	Cordova	2EE	53F / J	12.0		62,536	0	8,982	45,177	116,695	105,026
25-2204	E/Op Subjrny II	PT	A	LL	Tazlina	2FF	56K	8.0		38,181	0	6,196	28,895	73,272	25,645
25-2205	S&E Spt Spec	PT	A	GP	Thompson Pass	200	17M	8.0		50,896	778	5,877	33,556	91,107	0
25-2206	Equipment Operator, Journey I	FT	A	LL	Chandalar (Chandler) Camp	2JJ	54C / D	12.0		59,790	0	8,397	43,943	112,130	22,426
25-2208	Equipment Operator, Journey II	PT	A	LL	Paxson	2FF	53E / F	8.0		41,913	0	4,419	29,619	75,951	0
25-2209	Equipment Operator, Journey II	PT	A	LL	Ernestine	2FF	53A / B	8.0		36,782	0	3,894	27,524	68,200	23,870

Note: If a position is split, an asterisk (*) will appear in the Split/Count column. If the split position is also counted in the component, two asterisks (**) will appear in this column. [No valid job title] appearing in the Job Class Title indicates that the PCN has an invalid class code or invalid range for the class code effective date of this scenario.

Personal Services Expenditure Detail
Department of Transportation/Public Facilities

Scenario: FY2021 Governor (16414)
Component: Northern Region Highways and Aviation (2068)
RDU: Highways, Aviation and Facilities (408)

PCN	Job Class Title	Time Status	Retire Code	Barg Unit	Location	Salary Sched	Range / Step	Comp Months	Split / Count	Annual Salaries	COLA	Premium Pay	Annual Benefits	Total Costs	UGF Amount
25-2210	Equipment Operator, Journey II	PT	A	LL	Valdez	2FF	53K	10.0		56,409	0	4,882	38,274	99,565	69,696
25-2211	Equipment Operator, Journey II	PT	A	LL	Slana	2FF	53A / B	8.0		36,854	0	3,894	27,551	68,299	40,979
25-2213	E/Op Subjrmny I	PT	A	LL	Tazlina	2FF	58B	8.0		28,532	0	3,087	24,169	55,788	19,526
25-2214	E/Op Subjrmny I	PT	A	LL	Ernestine	2FF	58B / C	8.0		28,809	0	3,087	24,272	56,168	19,659
25-2215	Equipment Operator, Journey II	PT	A	LL	Slana	2FF	53B / C	8.0		38,110	0	4,018	28,062	70,190	0
25-2216	E/Op Subjrmny I	PT	A	LL	Slana	2FF	58B / C	8.0		29,031	0	3,087	24,354	56,472	0
25-2219	Equipment Operator, Journey II	PT	A	LL	Valdez	2FF	53B / C	10.0		46,800	0	4,018	34,395	85,213	0
25-2220	Equipment Operator, Journey II	PT	A	LL	Thompson Pass	2FF	53K	8.0		45,127	0	4,882	30,981	80,990	0
25-2221	Equipment Operator, Journey II	PT	A	LL	Thompson Pass	2FF	53K	8.0		45,127	0	4,882	30,981	80,990	0
25-2222	Equipment Operator, Journey II	FT	A	LL	Valdez	2FF	53A / B	12.0		54,993	0	3,894	40,498	99,385	0
25-2232	Administrative Assistant III	FT	A	GP	Valdez	211	15C / D	12.0		58,061	826	2,188	41,107	102,182	81,746
25-2241	Maint & OPS Spr	FT	A	SS	Tazlina	200	21M	12.0		105,361	0	0	57,856	163,217	130,574
25-2242	Administrative Assistant I	FT	A	GP	Valdez	211	12F / G	12.0		52,380	745	1,970	38,922	94,017	75,214
25-2243	Administrative Assistant II	FT	A	GP	Fairbanks	203	14B / C	12.0		49,073	698	1,828	37,644	89,243	80,319
25-2244	Administrative Assistant III	FT	A	GP	Tazlina	200	15G	12.0		59,052	809	0	40,663	100,524	80,419
25-2245	Maint & OPS Spr	FT	A	SS	Valdez	211	21L	12.0		113,286	0	0	60,791	174,077	139,262
25-3356	E/Op Jrny III	FT	A	LL	Utqiagvik	2JJ	52O	12.0		81,296	0	12,507	53,431	147,234	117,787
25-3385	Maint & OPS Spr	FT	A	SS	Fairbanks	2S4	21L	12.0		108,690	0	0	59,089	167,779	134,223
25-3428	E/Op Jrny III	FT	A	LL	Trimms	2FF	52F	12.0		67,337	0	4,857	45,427	117,621	58,811
25-3437	Equipment Operator, Journey II	FT	A	LL	Camp Fairbanks	2EE	53L / M	12.0		71,497	0	10,314	48,989	130,800	52,320
25-3488	Administrative Assistant I	FT	A	GP	Fairbanks	203	12F / G	12.0		48,738	693	1,828	37,520	88,779	88,779
25-3489	Administrative Assistant I	FT	A	GP	Tok	200	12D / E	12.0		43,683	621	1,658	35,585	81,547	65,238
25-3490	Office Assistant II	FT	A	GP	Tazlina	200	10A / B	12.0		35,450	486	0	31,921	67,857	54,286
25-3523	Equipment Operator, Journey II	PT	A	LL	Tok	2FF	53F / J	11.5		61,788	0	4,561	42,483	108,832	0
25-3554	E/Op Jrny III	FT	A	LL	Fairbanks	2EE	52N / O	12.0		79,451	0	11,394	52,335	143,180	0
25-3610	Equipment Operator, Journey II	PT	A	LL	Cantwell	2HH	53D / E	6.0		31,222	0	4,423	22,546	58,191	11,638
25-3655	E/Op Jrny III	FT	A	LL	Kotzebue	2JJ	52N / O	12.0		84,008	0	12,102	54,285	150,395	135,356
25-3656	E/Op Jrny III	FT	A	LL	Kotzebue	2JJ	52A / B	12.0		63,220	0	9,120	45,481	117,821	106,039

Note: If a position is split, an asterisk (*) will appear in the Split/Count column. If the split position is also counted in the component, two asterisks (**) will appear in this column. [No valid job title] appearing in the Job Class Title indicates that the PCN has an invalid class code or invalid range for the class code effective date of this scenario.

Personal Services Expenditure Detail
Department of Transportation/Public Facilities

Scenario: FY2021 Governor (16414)
Component: Northern Region Highways and Aviation (2068)
RDU: Highways, Aviation and Facilities (408)

PCN	Job Class Title	Time Status	Retire Code	Barg Unit	Location	Salary Sched	Range / Step	Comp Months	Split / Count	Annual Salaries	COLA	Premium Pay	Annual Benefits	Total Costs	UGF Amount
25-3657	E/Op Jrny III	FT	A	LL	Nome	2II	52E / F	12.0		69,318	0	9,834	48,004	127,156	101,725
25-3658	E/Op Jrny III	FT	A	LL	Kotzebue	2JJ	52K	12.0		76,051	0	10,971	50,919	137,941	124,147
25-3660	Equipment Operator Foreman II	FT	A	LL	Utqiagvik	2JJ	50L / M	12.0		87,520	0	12,468	55,722	155,710	116,783
25-3661	Equipment Operator Foreman I	FT	A	LL	Dalton Highway	2JJ	51P	12.0		89,381	0	12,894	56,569	158,844	0
25-3662	Equipment Operator, Journey II	FT	A	LL	Dalton Highway	2JJ	53O	12.0		81,562	0	11,766	53,255	146,583	0
25-3663	Equipment Operator, Journey II	FT	A	LL	Fairbanks	2EE	53F / J	12.0		62,445	0	8,982	45,143	116,570	46,628
25-3664	Equipment Operator, Journey II	FT	A	LL	Chandalar (Chandler) Camp	2JJ	53F / J	12.0		68,263	0	9,690	47,560	125,513	50,205
25-3665	Rural Airport Foreman	FT	A	LL	Utqiagvik	2JJ	49L / M	12.0		91,362	0	12,996	57,340	161,698	40,425
25-3668	Equipment Operator, Journey II	FT	A	LL	Coldfoot Camp	2JJ	53B / C	12.0		60,910	0	8,604	44,434	113,948	45,579
25-3669	Equipment Operator, Journey II	FT	A	LL	Livengood	2HH	53J / K	12.0		68,439	0	9,723	47,637	125,799	0
25-3670	E/Op Jrny III	FT	A	LL	Deadhorse	2JJ	52A / B	12.0		62,457	0	8,856	45,101	116,414	93,131
25-3671	Equipment Operator Foreman II	FT	A	LL	Deadhorse	2JJ	50J / K	12.0		82,044	0	11,673	53,399	147,116	117,693
25-3672	Equipment Operator, Journey II	FT	A	LL	Dalton Highway	2JJ	53J	12.0		64,447	0	9,297	46,001	119,745	0
25-3673	Equipment Operator, Journey II	FT	A	LL	Montana Creek	2EE	53F / J	12.0		63,537	0	8,982	45,547	118,066	47,226
25-3674	Equipment Operator, Journey II	FT	A	LL	Northway	2FF	53F	12.0		63,241	0	9,123	45,490	117,854	0
25-3675	Equipment Operator, Journey II	FT	A	LL	Montana Creek	2EE	53J	12.0		64,447	0	9,297	46,001	119,745	47,898
25-3676	E/Op Jrny III	FT	A	LL	Montana Creek	2EE	52N	12.0		78,983	0	11,394	52,162	142,539	35,635
25-3715	Environmental Impact Analyst I	FT	A	GP	Fairbanks	203	15A / B	12.0		50,594	797	7,560	40,331	99,282	0
25-N09040	E/Op Subjrny I	NP	N	LL	Fairbanks	2EE	58A	5.0		16,914	0	2,928	2,494	22,336	0
25-N09041	E/Op Subjrny I	NP	N	LL	Fairbanks	2EE	58A	5.0		16,914	0	2,928	2,494	22,336	0
25-N09042	E/Op Subjrny I	NP	N	LL	Fairbanks	2EE	58A	5.0		16,914	0	2,928	2,494	22,336	0
25-N09043	E/Op Subjrny I	NP	N	LL	Fairbanks	2EE	58A	5.0		16,914	0	2,928	2,494	22,336	0
25-N09044	E/Op Subjrny I	NP	N	LL	Fairbanks	2EE	58A	5.0		16,914	0	2,928	2,494	22,336	0
25-N09047	E/Op Subjrny I	NP	N	LL	Tazlina	2FF	58A	6.0		20,754	0	2,994	2,985	26,733	0

Note: If a position is split, an asterisk (*) will appear in the Split/Count column. If the split position is also counted in the component, two asterisks (**) will appear in this column.
[No valid job title] appearing in the Job Class Title indicates that the PCN has an invalid class code or invalid range for the class code effective date of this scenario.

Personal Services Expenditure Detail
Department of Transportation/Public Facilities

Scenario: FY2021 Governor (16414)
Component: Northern Region Highways and Aviation (2068)
RDU: Highways, Aviation and Facilities (408)

PCN	Job Class Title	Time Status	Retire Code	Barg Unit	Location	Salary Sched	Range / Step	Comp Months	Split / Count	Annual Salaries	COLA	Premium Pay	Annual Benefits	Total Costs	UGF Amount
25-N09048	E/Op Subjrny I	NP	N	LL	Tazlina	2FF	58A	6.0		20,754	0	2,994	2,985	26,733	0
25-N09049	E/Op Subjrny I	NP	N	LL	Tazlina	2FF	58A	6.0		20,754	0	2,994	2,985	26,733	0
25-N09050	E/Op Subjrny I	NP	N	LL	Tazlina	2FF	58A	6.0		20,754	0	2,994	2,985	26,733	0
25-N09051	E/Op Subjrny I	NP	N	LL	Tazlina	2FF	58A	6.0		20,754	0	2,994	2,985	26,733	0
25-N09052	E/Op Subjrny I	NP	N	LL	Tazlina	2FF	58A	6.0		20,754	0	2,994	2,985	26,733	0
25-N11047	E/Op Subjrny II	NP	N	LL	Dalton Highway	2JJ	56A	5.0		18,699	0	3,237	2,757	24,693	0
25-N11048	E/Op Subjrny II	NP	N	LL	Dalton Highway	2JJ	56A	5.0		18,699	0	3,237	2,757	24,693	0
25-N11049	E/Op Subjrny II	NP	N	LL	Dalton Highway	2JJ	56A	5.0		18,699	0	3,237	2,757	24,693	0
25-N11050	E/Op Subjrny II	NP	N	LL	Dalton Highway	2JJ	56A	5.0		18,699	0	3,237	2,757	24,693	0
25-N11064	E/Op Subjrny II	NP	N	LL	Dalton Highway	2JJ	56A	5.0		18,699	0	3,237	2,757	24,693	0
25-N11065	E/Op Subjrny II	NP	N	LL	Dalton Highway	2JJ	56A	5.0		18,699	0	3,237	2,757	24,693	0
25-N11066	E/Op Subjrny II	NP	N	LL	Dalton Highway	2JJ	56A	5.0		18,699	0	3,237	2,757	24,693	0
25-N11067	E/Op Subjrny II	NP	N	LL	Dalton Highway	2JJ	56A	5.0		18,699	0	3,237	2,757	24,693	0
25-N16168	E/Op Subjrny I	NP	N	LL	Healy	2HH	58A	5.0		18,067	0	3,127	2,664	23,858	0
													Total Salary Costs:	20,104,998	
													Total COLA:	24,560	
													Total Premium Pay:	2,473,856	
													Total Benefits:	13,601,543	
													Total Pre-Vacancy:	36,204,957	
													Minus Vacancy Adjustment of 5.29%:	(1,915,860)	
													Total Post-Vacancy:	34,289,097	
													Plus Lump Sum Premium Pay:	0	
													Personal Services Line 100:	34,289,097	
		Total Positions	New	Deleted											
Full Time Positions:		250	0	0											
Part Time Positions:		51	0	0											
Non Permanent Positions:		20	0	0											
Positions in Component:		321	0	0											
Total Component Months:		3,536.5													

Note: If a position is split, an asterisk (*) will appear in the Split/Count column. If the split position is also counted in the component, two asterisks (**) will appear in this column. [No valid job title] appearing in the Job Class Title indicates that the PCN has an invalid class code or invalid range for the class code effective date of this scenario.

**Personal Services Expenditure Detail
Department of Transportation/Public Facilities**

Scenario: FY2021 Governor (16414)
Component: Northern Region Highways and Aviation (2068)
RDU: Highways, Aviation and Facilities (408)

PCN Funding Sources:	Pre-Vacancy	Post-Vacancy	Percent
1002 Federal Receipts	1,542	1,460	0.00%
1004 General Fund Receipts	17,527,521	16,600,016	48.41%
1005 General Fund/Program Receipts	175,501	166,214	0.48%
1007 Interagency Receipts	93,760	88,798	0.26%
1027 International Airport Revenue Fund	55,114	52,198	0.15%
1039 U/A Indirect Cost Recovery	711,976	674,300	1.97%
1061 Capital Improvement Project Receipts	6,853,190	6,490,539	18.93%
1108 Statutory Designated Program Receipts	68,424	64,803	0.19%
1200 Vehicle Rental Tax Receipts	153,865	145,723	0.42%
1239 Aviation Fuel Tax Revenue	807,379	764,655	2.23%
1244 Rural Airport Receipts	296,998	281,282	0.82%
1249 Motor Fuel Tax Receipts	9,459,686	8,959,107	26.13%
Total PCN Funding:	36,204,957	34,289,097	100.00%

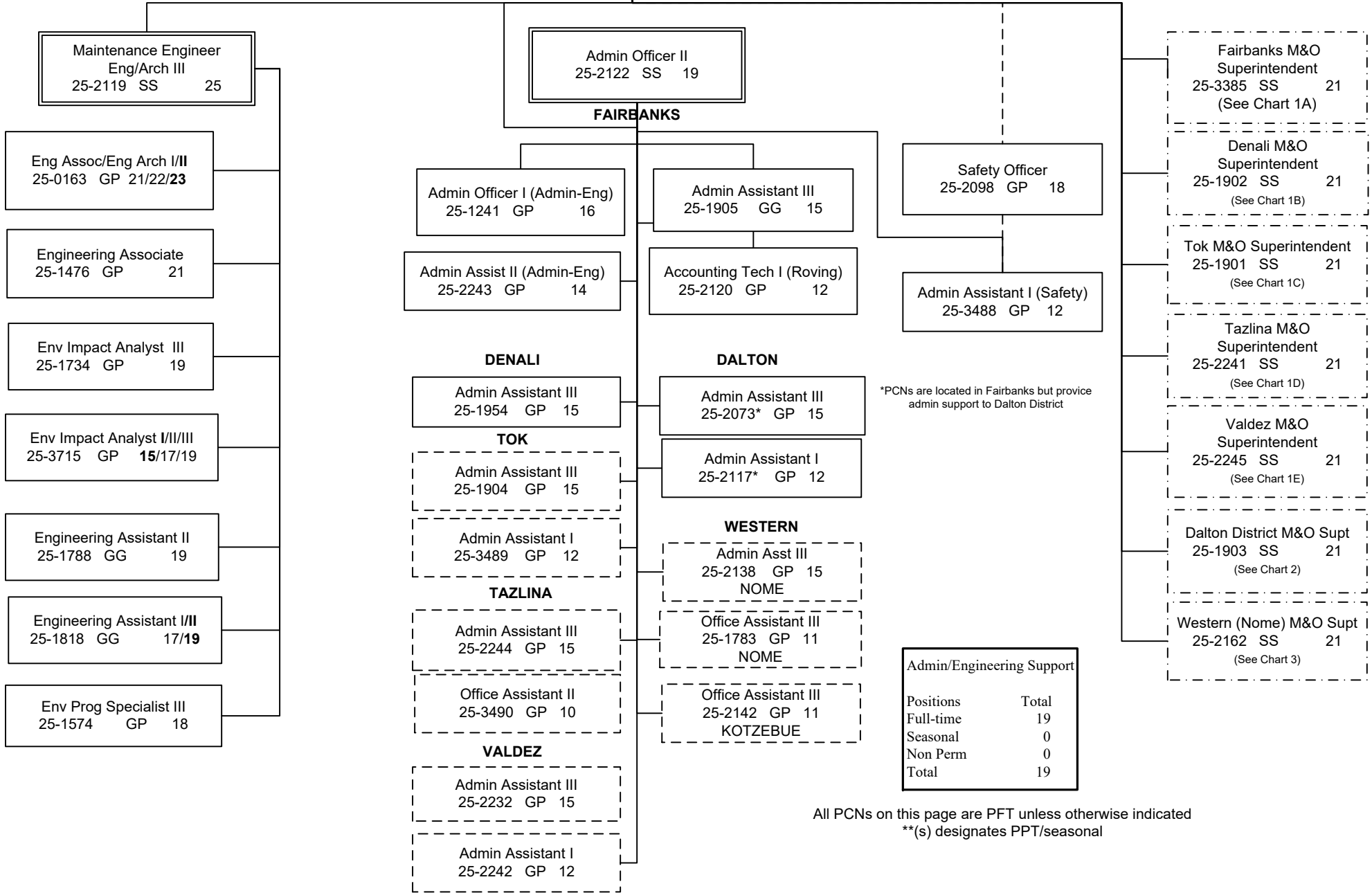
Note: If a position is split, an asterisk (*) will appear in the Split/Count column. If the split position is also counted in the component, two asterisks (**) will appear in this column. [No valid job title] appearing in the Job Class Title indicates that the PCN has an invalid class code or invalid range for the class code effective date of this scenario.

**DEPARTMENT OF TRANSPORTATION & PUBLIC FACILITIES
HIGHWAYS, AVIATION AND FACILITIES (408)
NORTHERN REGION HIGHWAYS & AVIATION (2068)
FY2021 GOVERNOR'S BUDGET
ADMINISTRATION/ENGINEERING, CHART 1**

**FAIRBANKS
(JBA)**

NORTHERN REGION HIGHWAYS & AVIATION	
Positions	Total
Full-Time	250
Seasonal	51
Non-Perm	20
Total	321

M&O Chief
Eng/Arch IV
25-1914 SS 26



All PCNs on this page are PFT unless otherwise indicated
**(s) designates PPT/seasonal

**DEPARTMENT OF TRANSPORTATION & PUBLIC FACILITIES
HIGHWAYS, AVIATION AND FACILITIES (408)
NORTHERN REGION HIGHWAYS & AVIATION (2068)
FY2021 GOVERNOR'S BUDGET
FAIRBANKS DISTRICT, CHART 1A**

Fairbanks District	
Positions	Total
Full-time	50
Seasonal(PPT)	3
Non Perm	3
Total	56

**FAIRBANKS
(JBA)**

Eng/Arch IV
25-1914 SS 26

Fairbanks M&O Superintendent
25-3385 SS 21

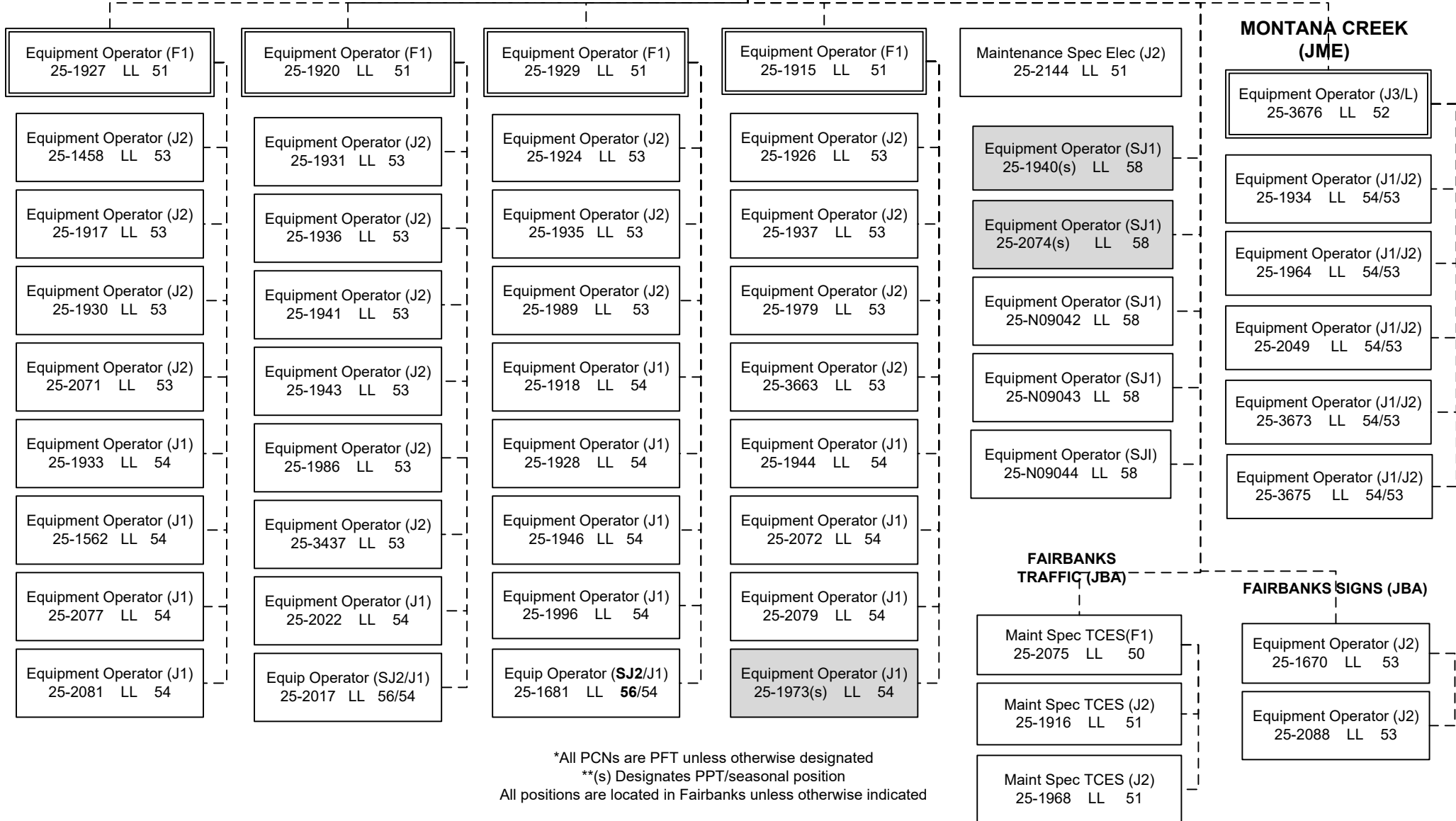
Equipment Operator (F2)
25-1919 LL 50

Admin Assistant III
25-1905 GG 15

Stock & Parts Svcs II
25-1225 LL 55

KEY:

- F1 – Foremen I
- F2 – Foremen II
- J1 – Journey I
- J2 – Journey II
- J3/L – Journey III / Lead
- SJ1 – Sub-Journey I
- SJII – Sub-Journey II
- L – Lead
- S – PPT/SACL



*All PCNs are PFT unless otherwise designated
 **(s) Designates PPT/seasonal position
 All positions are located in Fairbanks unless otherwise indicated

**DEPARTMENT OF TRANSPORTATION & PUBLIC FACILITIES
HIGHWAYS, AVIATION AND FACILITIES (408)
NORTHERN REGION HIGHWAYS & AVIATION (2068)
FY2021 GOVERNOR'S BUDGET
DENALI DISTRICT, CHART 1B**

**FAIRBANKS
(JBA)**

Eng/Arch IV
25-1914 SS 26

Denali M&O Superintendent
25-1902 SS 21

Admin Assistant III
25-1954 GP 15

**CANTWELL
(HJI)**

Equipment Operator (F1)
25-1952 LL 51

Equipment Operator (J1/J2)
25-1921 LL 54/53

Equipment Operator (J1/J2)
25-1991 LL 55/53

Equipment Operator (J1/J2)
25-1999 LL 54/53

Equipment Operator (J1/J2)
25-2000 LL 54/53

Equipment Operator (J1/J2)
25-2001 LL 54/53

Equipment Operator (J2)
25-2025(s) LL 53

Equipment Operator (J2)
25-3610(s) LL 53

Equipment Operator (SJ1)
25-1706(s) LL 58

**HEALY
(HJA)**

Equipment Operator (J3/L)
25-1995 LL 52

Equipment Operator (J2)
25-1997 LL 53

Equipment Operator (J2)
25-1998(s) LL 53

Equipment Operator (J1)
25-1961(s) LL 54

Equipment Operator (SJ1)
25-N16168 LL 58

Denali District	
Positions	Total
Full-time	18
Seasonal	7
Non Perm	3
Total	28

*All PCNs PFT unless otherwise designated
**(s) designates PPT/seasonal

**NENANA
(JBM)**

Equipment Operator (J3/L)
25-1990 LL 52

Equipment Operator (J1/J2)
25-1955 LL 54/53

Equipment Operator (J1/J2)
25-1993 LL 54/53

Equipment Operator (J1/J2)
25-2087 LL 54/53

Equipment Operator (J1)
25-1942(s) LL 54

Equipment Operator (SJ2)
25-2018(s) LL 56

KEY:	
F1	– Foremen I
F2	– Foremen II
J1	– Journey I
J2	– Journey II
J3/L	– Journey III / Lead
SJ1	– Sub-Journey I
SJII	– Sub-Journey II
L	– Lead
S	– PPT/SACL

**NR BRIDGE CREW -
FAIRBANKS
(JBA)**

Equipment Operator (F1)
25-1932 LL 51

Equipment Operator (SJ1)
25-N09041 LL 58

Equipment Operator (SJ1)
25-N09040 LL 58

**RURAL AVIATION -
FAIRBANKS
(JBA)**

Equipment Operator Lead (J3/L)
25-3554 LL 52

Maint. Spec Elect (J2)
25-1583 LL 51

**GALENA
(HYC)**

Equipment Operator (F1)
25-1908 LL 51

Equipment Operator (J2)
25-1909 LL 53

DEPARTMENT OF TRANSPORTATION & PUBLIC FACILITIES
HIGHWAYS, AVIATION AND FACILITIES (408)
NORTHERN REGION HIGHWAYS & AVIATION (2068)
FY2021 GOVERNOR'S BUDGET
TOK DISTRICT, CHART 1C

Eng/Arch IV
25-1914 SS 26

**TOK
(HEB)**

Tok M&O Superintendent
25-1901 SS 21

Admin Assistant III
25-1904 GP 15

Admin Assistant I
25-3489 GP 12

**DELTA
(JJB)**

**NORTHWAY
(HEC)**

**SOUTH FORK
(JKF)**

**TOK
(HEB)**

**TRIMMS
CAMP (HHH)**

Equipment Operator (F1)
25-1947 LL 51

Equipment Operator (J2)
25-1948 LL 53

Equipment Operator (J2)
25-1949 LL 53

Equipment Operator (J2)
25-1950 LL 53

Equipment Operator (J2)
25-1951 LL 53

Equipment Operator (J2)
25-1975 LL 53

Equipment Operator (J2)
25-2199 LL 53

Equipment Operator (J1)
25-1938(s) LL 54

Equipment Operator (SJ2)
25-1967(s) LL 56

Equipment Operator (J3/L)
25-2002 LL 52

Equipment Operator (J2)
25-2005 LL 53

Equipment Operator (J2)
25-2021 LL 53

Equipment Operator (J2)
25-3674 LL 53

Equipment Operator (J2)
25-2003(s) LL 53

EAGLE (JKA)

Equipment Operator (J3/L)
25-2013 LL 52

Equipment Operator (J2)
25-2012(s) LL 53

Equipment Operator (J2)
25-2014(s) LL 53

Equipment Operator (J3/L)
25-1983(s) LL 52

Equipment Operator (J1/J2)
25-2009(s) LL 54/53

Equipment Operator (J2)
25-2010(s) LL 53

Equipment Operator (J2)
25-2011(s) LL 53

KEY:
 F1 – Foremen I
 F2 – Foremen II
 J1 – Journey I
 J2 – Journey II
 J3/L – Journey III / Lead
 SJ1 – Sub-Journey I
 SJII – Sub-Journey II
 L – Lead
 S – PPT/SACL

*All PCNs PFT unless otherwise designated
 **(s) designates PPT/seasonal

Equipment Operator (F1)
25-1957 LL 51

Equipment Operator (J2)
25-1958 LL 53

Equipment Operator (J2)
25-1962 LL 53

Equipment Operator (J2)
25-1977 LL 53

Equipment Operator (J2)
25-1992 LL 53

Equipment Operator (J2)
25-2089 LL 53

Equipment Operator (J2)
25-1959(s) LL 53

Equipment Operator (J2)
25-3523(s) LL 53

Equipment Operator (J1)
25-1966(s) LL 54

Equipment Operator (SJ2)
25-1994(s) LL 56

Equipment Operator (J3/L)
25-3428 LL 52

Equipment Operator (J2)
25-1911 LL 53

Equipment Operator (J2)
25-2083(s) LL 53

Equipment Operator (J2)
25-2085(s) LL 53

Tok District	
Positions	Total
Full-time	23
Seasonal	15
Non Perm	0
Total	38

**DEPARTMENT OF TRANSPORTATION & PUBLIC FACILITIES
HIGHWAYS, AVIATION AND FACILITIES (408)
NORTHERN REGION HIGHWAYS & AVIATION (2068)
FY2021 GOVERNOR'S BUDGET
TAZLINA DISTRICT, CHART 1D**

Eng/Arch IV
25-1914 SS 26

**TAZLINA
(HCF)**

Tazlina M&O Superintendent
25-2241 SS 21

Admin Assistant III
25-2244 GP 15

Officer Assistant I
25-3490 GP 10

**ERNESTINE
(EAD)**

**NELCHINA
(HBH)**

**SLANA
(HDD)**

**TAZLINA
(HCF)**

Equipment Operator (J3/L)
25-2174 LL 52

Equipment Operator (J2)
25-2176 LL 53

Equipment Operator (J2)
25-2178 LL 53

Equipment Operator (J2)
25-2201 LL 53

Equipment Operator (J2)
25-2189(s) LL 53

Equipment Operator (SJ1)
25-2214(s) LL 58

Equipment Operator (J2)
25-2209(s) LL 53

Equipment Operator (J3/L)
25-2193 LL 52

Equipment Operator (J2)
25-2191 LL 53

Equipment Operator (J2)
25-2195 LL 53

Equipment Operator (J2)
25-2197 LL 53

**PAXSON
(HHD)**

Equipment Operator (J3/L)
25-2188 LL 52

Equipment Operator (J2)
25-1939 LL 53

Equipment Operator (J2)
25-2190 LL 53

Equipment Operator (J2)
25-2194 LL 53

Equipment Operator (J2)
25-2208(s) LL 53

Equipment Operator (J3/L)
25-2196 LL 52

Equipment Operator (J2)
25-2177 LL 53

Equipment Operator (J2)
25-2171(s) LL 53

Equipment Operator (J2)
25-2211(s) LL 53

Equipment Operator (J2)
25-2215(s) LL 53

Equipment Operator (SJ1)
25-2216(s) LL 58

Tazlina District	
Positions	Total
Full-time	25
Seasonal	12
Non Perm	6
Total	43

*All PCNs PFT unless otherwise designated
**(s) designates PPT/seasonal

Equipment Operator (F1)
25-2179 LL 51

Equipment Operator (J2)
25-2180 LL 53

Equipment Operator (J2)
25-2181 LL 53

Equipment Operator (J2)
25-2182 LL 53

Equipment Operator (J2)
25-2183 LL 53

Equipment Operator (J2)
25-2185 LL 53

Equipment Operator (J2)
25-2186 LL 53

Equipment Operator (J2)
25-2192 LL 53

Equipment Operator (J2)
25-2198(s) LL 53

Equipment Operator (SJ2)
25-2204(s) LL 56

Equipment Operator (SJ1)
25-1831(s) LL 58

Equipment Operator (SJ1)
25-2213(s) LL 58

Equipment Operator (SJ1)
25-N09047 LL 58

Equipment Operator (SJ1)
25-N09048 LL 58

Equipment Operator (SJ1)
25-N09049 LL 58

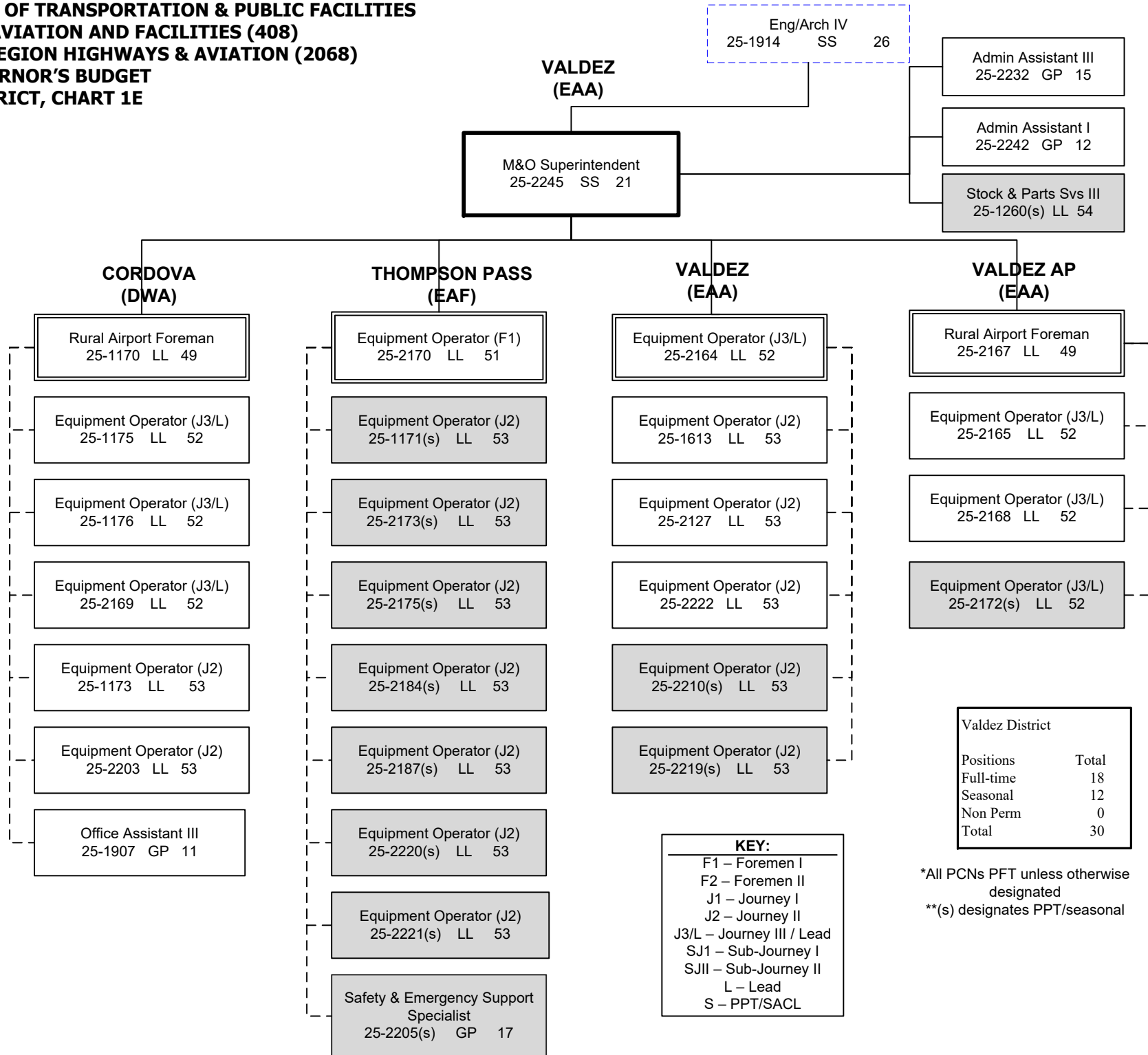
Equipment Operator (SJ1)
25-N09050 LL 58

Equipment Operator (SJ1)
25-N09051 LL 58

Equipment Operator (SJ1)
25-N09052 LL 58

KEY:
F1 – Foremen I
F2 – Foremen II
J1 – Journey I
J2 – Journey II
J3/L – Journey III / Lead
SJ1 – Sub-Journey I
SJII – Sub-Journey II
L – Lead
S – PPT/SACL

**DEPARTMENT OF TRANSPORTATION & PUBLIC FACILITIES
HIGHWAYS, AVIATION AND FACILITIES (408)
NORTHERN REGION HIGHWAYS & AVIATION (2068)
FY2021 GOVERNOR'S BUDGET
VALDEZ DISTRICT, CHART 1E**



*All PCNs PFT unless otherwise designated
**(s) designates PPT/seasonal

**DEPARTMENT OF TRANSPORTATION & PUBLIC FACILITIES
HIGHWAYS, AVIATION AND FACILITIES (408)
NORTHERN REGION HIGHWAYS & AVIATION (2068)
FY2021 GOVERNOR'S BUDGET
DALTON DISTRICT, CHART 2**

Eng/Arch IV
25-1914 SS 26

FAIRBANKS
(JBA)

FAIRBANKS
(JBA)

Admin Assistant III
25-2073 GP 15
Admin Assistant I
25-2117 GP 12

Dalton M&O Superintendent
25-1903 SS 21

Equip Operator (F1)
25-2041 LL 51

Equip Operator (F1)
25-3661 LL 51

**FBKS/DALTON
ROVING (JCN)**

- Equip Operator (J2)
25-2026 LL 53
- Equip Operator (J2)
25-2038 LL 53
- Equip Operator (J2)
25-2045 LL 53
- Equip Operator (J2)
25-3672 LL 53
- Equip Operator (J2)
25-3662 LL 53
- Equip Operator (SJ2)
25-N11047 LL 56
- Equip Operator (SJ2)
25-N11048 LL 56
- Equip Operator (SJ2)
25-N11049 LL 56
- Equip Operator (SJ2)
25-N11050 LL 56
- Equip Operator (SJ2)
25-N11064 LL 56
- Equip Operator (SJ2)
25-N11065 LL 56
- Equip Operator (SJ2)
25-N11066 LL 56
- Equip Operator (SJ2)
25-N11067 LL 56

**LIVENGOOD
(JQA)**

- Equip Operator(J3/L)
25-1980 LL 52
- Equip Operator (J2)
25-1981 LL 53
- Equip Operator (J2)
25-1985 LL 53
- Equip Operator (J2)
25-2008 LL 53
- Equip Operator (J2)
25-2060 LL 53
- Equip Operator (J2)
25-3669 LL 53
- Equip Operator (SJ2/J1)
25-2050 LL 56/54

Dalton District	
Positions	Total
Full-time	63
Seasonal	2
Non Perm	8
Total	73

**JIM RIVER
(KEE)**

- Equip Operator (J3/L)
25-2032 LL 52
- Equip Operator (J2)
25-2053 LL 53
- Equip Operator (J1/J2)
25-2058 LL 54/53
- Equip Operator (J2)
25-2066 LL 53
- Equip Operator (SJ2/J1)
25-2055 LL 56/54

MANLEY (JRC)

- Equip Operator (J3/L)
25-1982 LL 52
- Equip Operator (J2)
25-1960 LL 53
- Equip Operator (J1/J2)
25-1969 LL 54/53
- Equip Operator (J2)
25-1971 LL 53
- Equip Operator (SJ2/J1)
25-2069 LL 56/54

**COLDFOOT
(KRB)**

- Equip Operator (J3/L)
25-2034 LL 52
- Equip Operator (J2)
25-2042 LL 53
- Equip Operator (J2)
25-3668 LL 53
- Equip Operator (J2)
25-2086(s) LL 53

**SEVEN MILE
(JQG)**

- Equip Operator (J3/L)
25-2030 LL 52
- Equip Operator (J2)
25-2031 LL 53
- Equip Operator (J2)
25-2065 LL 53
- Equip Operator (J2)
25-2091 LL 53
- Equip Operator (SJ2/J1)
25-2059 LL 56/54

**CHANDALAR
(LEA)**

- Equip Operator (J3/L)
25-2028 LL 52
- Equip Operator (J2)
25-2051 LL 53
- Equip Operator (J2)
25-2062 LL 53
- Equip Operator (J2)
25-2070 LL 53
- Equip Operator (J2)
25-2090 LL 53
- Equip Operator (J2)
25-3664 LL 53
- Equip Operator (J2)
25-2036(s) LL 53
- Equip Operator (SJ2/J1)
25-2206 LL 56/54

**SAG RIVER
(LED)**

- Equip Operator (J3/L)
25-2029 LL 52
- Equip Operator (J2)
25-2035 LL 53
- Equip Operator (J2)
25-2040 LL 53
- Equip Operator (J2)
25-2057 LL 53
- Equip Operator (SJ2/J1)
25-2019 LL 56/54
- Equip Operator (SJ2/J1)
25-2080 LL 56/54

KEY:

- F1 – Foremen I
- F2 – Foremen II
- J1 – Journey I
- J2 – Journey II
- J3/L – Journey III / Lead
- SJ1 – Sub-Journey I
- SJII – Sub-Journey II
- L – Lead
- S – PPT/SACL

*All PCNs PFT unless otherwise designated
**(s) designates PPT/seasonal

**DEPARTMENT OF TRANSPORTATION & PUBLIC FACILITIES
HIGHWAYS, AVIATION AND FACILITIES (408)
NORTHERN REGION HIGHWAYS & AVIATION (2068)
FY2021 GOVERNOR'S BUDGET
DALTON DISTRICT, CHART 2B**

FAIRBANKS
(JBA)

Dalton M&O Superintendent
25-1903 SS 21

**BARROW/UTQIAGVIK
(MEA)**

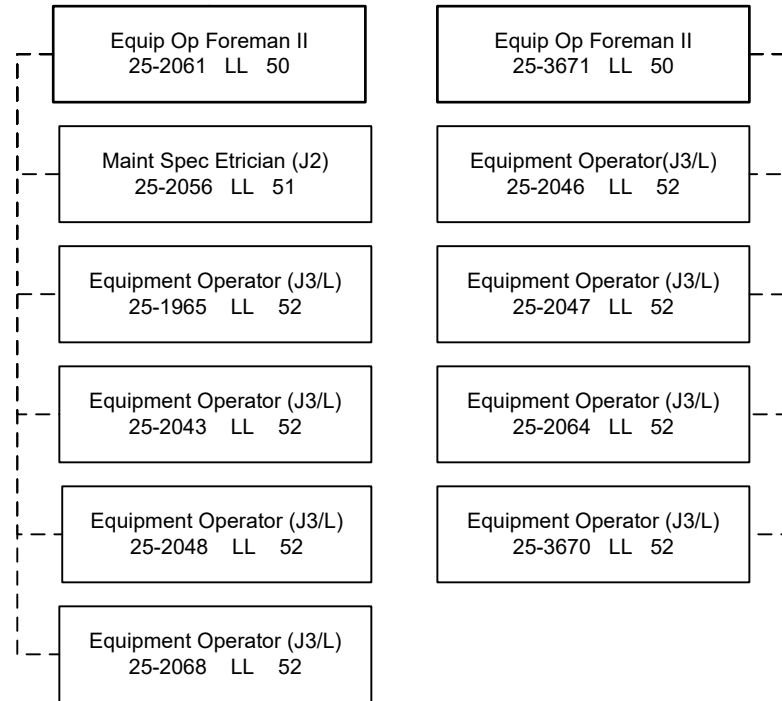
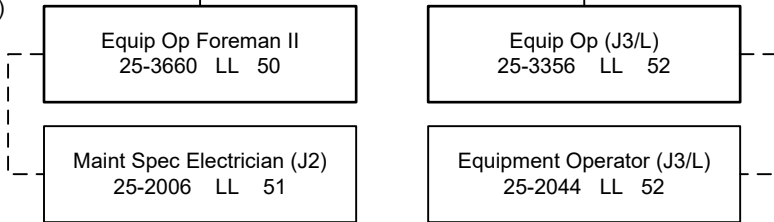
**DEADHORSE
(MBC)**

Rural Airport Foreman
25-3665 LL 49

Rural Airport Foreman
25-2023 LL 49

(Work alternate
workweeks)

(Work alternate
workweeks)



KEY:
F1 – Foremen I
F2 – Foremen II
J1 – Journey I
J2 – Journey II
J3/L – Journey III / Lead
SJ1 – Sub-Journey I
SJII – Sub-Journey II
L – Lead
S – PPT/SACL

*All PCNs PFT unless otherwise designated

**DEPARTMENT OF TRANSPORTATION & PUBLIC FACILITIES
HIGHWAYS, AVIATION AND FACILITIES (408)
NORTHERN REGION HIGHWAYS & AVIATION (2068)
FY2021 GOVERNOR'S BUDGET
WESTERN DISTRICT, CHART 3**

**NOME
(HTA)**

Eng/Arch IV
25-1914 SS 26

Western M&O Superintendent
25-2162 SS 21

Admin Asst III
25-2138 GP 15

Stock & Parts Svc III
25-1253 LL 54

**KOTZEBUE
AIRPORT
(KAA)**

Rural Airport Foreman
25-2128 LL 49

Equipment Operator (J3/L)
25-2129 LL 52

Equipment Operator (J3/L)
25-2130 LL 52

Equipment Operator (J3/L)
25-2137 LL 52

Equipment Operator (J3/L)
25-3655 LL 52

Equipment Operator (J3/L)
25-3656 LL 52

Equipment Operator (J3/L)
25-3658 LL 52

Equipment Operator (J3/L)
25-2147 LL 52

Office Assistant III
25-2142 GP 11

**NOME
AIRPORT
(HTA)**

Rural Airport Foreman
25-2123 LL 49

Equipment Operator (J3/L)
25-1671 LL 52

Equipment Operator (J3/L)
25-2125 LL 52

Equipment Operator (J3/L)
25-2139 LL 52

Equipment Operator (J3/L)
25-2140 LL 52

Equipment Operator (J3/L)
25-2146 LL 52

Equipment Operator (J3/L)
25-2154 LL 52

Equipment Operator (J1/J2/J3/L)
25-3657 LL 54/53/52

Office Assistant III
25-1783 GP 11

**NOME
HIGHWAYS
(HTA)**

Equipment Operator (F1)
25-2124 LL 51

Equipment Operator (J2)
25-2126 LL 53

Equipment Operator (J2)
25-2135 LL 53

Equipment Operator (J2)
25-2136 LL 53

Equipment Operator (J2)
25-2151 LL 53

Equipment Operator (J2)
25-2152 LL 53

Equipment Operator (J1/J2)
25-2153 LL 54/53

**ST. MARY'S
(EWG)**

Equipment Operator (F1)
25-1178 LL 51

Equipment Operator (J2)
25-1181 LL 53

Equipment Operator (J1/J2)
25-1472 LL 54/53

**UNALAKLEET
AIRPORT
(HQA)**

Equipment Operator (F1)
25-2132 LL 51

Equipment Operator (J1/J2)
25-2037 LL 54/53

Equipment Operator (J2)
25-2149 LL 53

KEY:
F1 – Foremen I
F2 – Foremen II
J1 – Journey I
J2 – Journey II
J3/L – Journey III / Lead
SJ1 – Sub-Journey I
SJII – Sub-Journey II
L – Lead
S – PPT/SACL

*All PCNs PFT unless otherwise designated

Western District	
Positions	Total
Full-time	34
Seasonal	0
Non Perm	0
Total	34