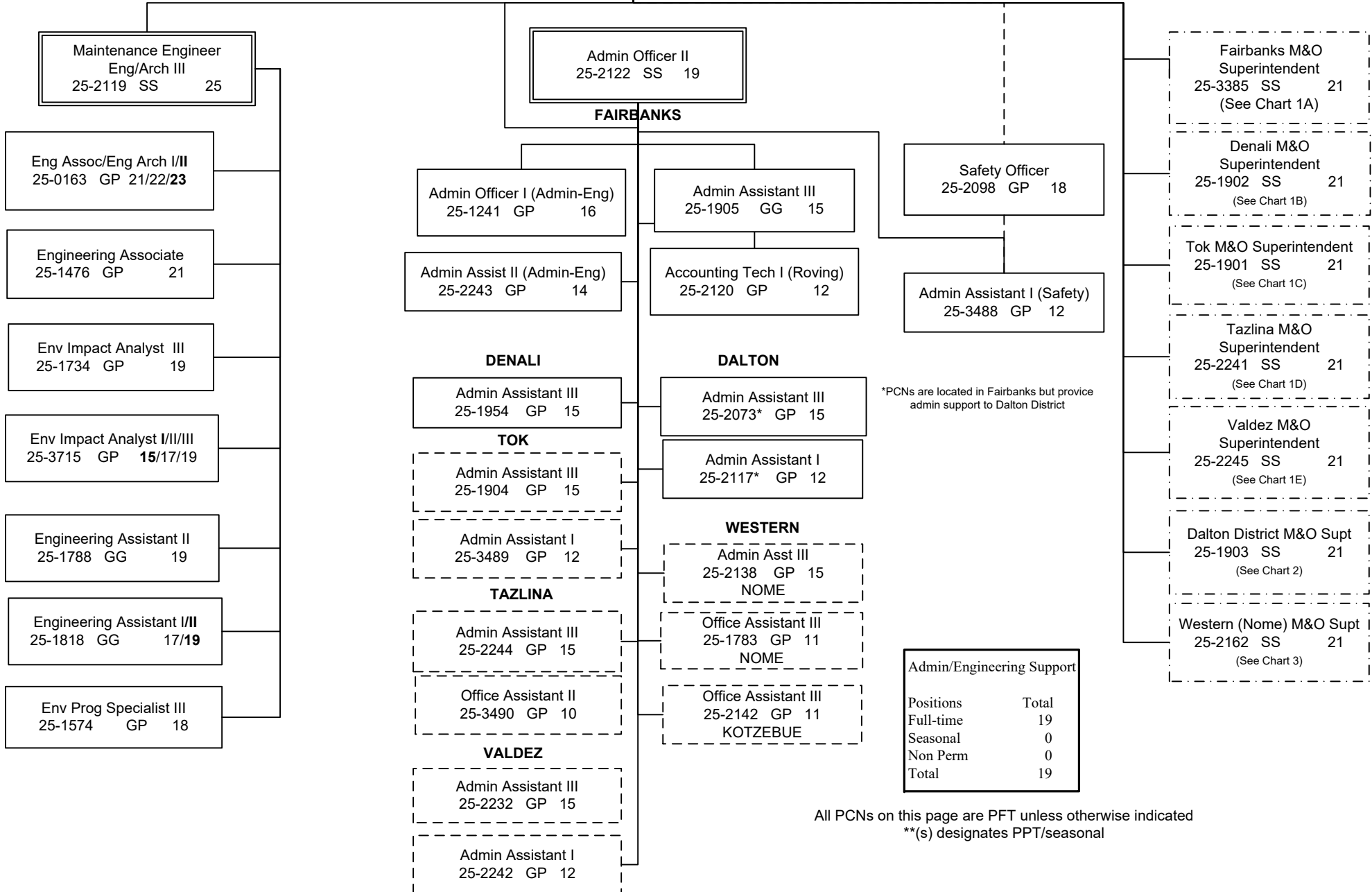


**DEPARTMENT OF TRANSPORTATION & PUBLIC FACILITIES  
HIGHWAYS, AVIATION AND FACILITIES (408)  
NORTHERN REGION HIGHWAYS & AVIATION (2068)  
FY2021 GOVERNOR'S BUDGET  
ADMINISTRATION/ENGINEERING, CHART 1**

**FAIRBANKS  
(JBA)**

NORTHERN REGION HIGHWAYS & AVIATION	
Positions	Total
Full-Time	250
Seasonal	51
Non-Perm	20
<b>Total</b>	<b>321</b>

M&O Chief  
Eng/Arch IV  
25-1914 SS 26



\*PCNs are located in Fairbanks but provide admin support to Dalton District

All PCNs on this page are PFT unless otherwise indicated  
\*\*(s) designates PPT/seasonal

**DEPARTMENT OF TRANSPORTATION & PUBLIC FACILITIES  
HIGHWAYS, AVIATION AND FACILITIES (408)  
NORTHERN REGION HIGHWAYS & AVIATION (2068)  
FY2021 GOVERNOR'S BUDGET  
FAIRBANKS DISTRICT, CHART 1A**

Fairbanks District	
Positions	Total
Full-time	50
Seasonal(PPT)	3
Non Perm	3
Total	56

**FAIRBANKS  
(JBA)**

Eng/Arch IV  
25-1914 SS 26

Fairbanks M&O Superintendent  
25-3385 SS 21

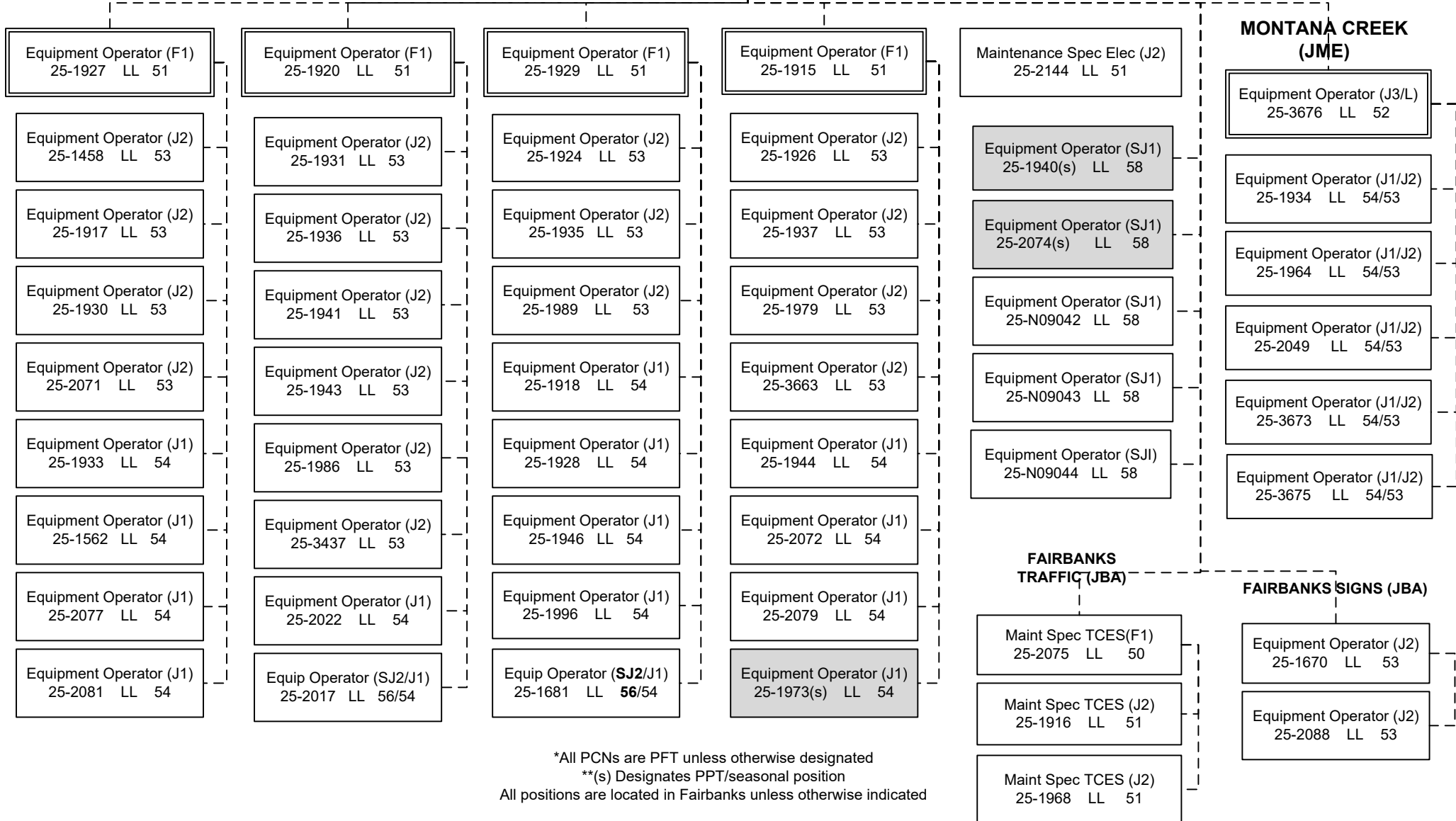
Equipment Operator (F2)  
25-1919 LL 50

Admin Assistant III  
25-1905 GG 15

Stock & Parts Svcs II  
25-1225 LL 55

**KEY:**

- F1 – Foremen I
- F2 – Foremen II
- J1 – Journey I
- J2 – Journey II
- J3/L – Journey III / Lead
- SJ1 – Sub-Journey I
- SJII – Sub-Journey II
- L – Lead
- S – PPT/SACL



\*All PCNs are PFT unless otherwise designated  
 \*\*(s) Designates PPT/seasonal position  
 All positions are located in Fairbanks unless otherwise indicated

**DEPARTMENT OF TRANSPORTATION & PUBLIC FACILITIES  
HIGHWAYS, AVIATION AND FACILITIES (408)  
NORTHERN REGION HIGHWAYS & AVIATION (2068)  
FY2021 GOVERNOR'S BUDGET  
DENALI DISTRICT, CHART 1B**

**FAIRBANKS  
(JBA)**

Eng/Arch IV  
25-1914 SS 26

**Denali M&O Superintendent**  
25-1902 SS 21

Admin Assistant III  
25-1954 GP 15

**CANTWELL  
(HJI)**

Equipment Operator (F1)  
25-1952 LL 51

Equipment Operator (J1/J2)  
25-1921 LL 54/53

Equipment Operator (J1/J2)  
25-1991 LL 55/53

Equipment Operator (J1/J2)  
25-1999 LL 54/53

Equipment Operator (J1/J2)  
25-2000 LL 54/53

Equipment Operator (J1/J2)  
25-2001 LL 54/53

Equipment Operator (J2)  
25-2025(s) LL 53

Equipment Operator (J2)  
25-3610(s) LL 53

Equipment Operator (SJ1)  
25-1706(s) LL 58

**HEALY  
(HJA)**

Equipment Operator (J3/L)  
25-1995 LL 52

Equipment Operator (J2)  
25-1997 LL 53

Equipment Operator (J2)  
25-1998(s) LL 53

Equipment Operator (J1)  
25-1961(s) LL 54

Equipment Operator (SJ1)  
25-N16168 LL 58

Denali District

Positions	Total
Full-time	18
Seasonal	7
Non Perm	3
<b>Total</b>	<b>28</b>

\*All PCNs PFT unless otherwise designated  
\*\*(s) designates PPT/seasonal

**NENANA  
(JBM)**

Equipment Operator (J3/L)  
25-1990 LL 52

Equipment Operator (J1/J2)  
25-1955 LL 54/53

Equipment Operator (J1/J2)  
25-1993 LL 54/53

Equipment Operator (J1/J2)  
25-2087 LL 54/53

Equipment Operator (J1)  
25-1942(s) LL 54

Equipment Operator (SJ2)  
25-2018(s) LL 56

**KEY:**

- F1 – Foremen I
- F2 – Foremen II
- J1 – Journey I
- J2 – Journey II
- J3/L – Journey III / Lead
- SJ1 – Sub-Journey I
- SJII – Sub-Journey II
- L – Lead
- S – PPT/SACL

**NR BRIDGE CREW -  
FAIRBANKS  
(JBA)**

Equipment Operator (F1)  
25-1932 LL 51

Equipment Operator (SJ1)  
25-N09041 LL 58

Equipment Operator (SJ1)  
25-N09040 LL 58

**RURAL AVIATION -  
FAIRBANKS  
(JBA)**

Equipment Operator Lead (J3/L)  
25-3554 LL 52

Maint. Spec Elect (J2)  
25-1583 LL 51

**GALENA  
(HYC)**

Equipment Operator (F1)  
25-1908 LL 51

Equipment Operator (J2)  
25-1909 LL 53

**DEPARTMENT OF TRANSPORTATION & PUBLIC FACILITIES**  
**HIGHWAYS, AVIATION AND FACILITIES (408)**  
**NORTHERN REGION HIGHWAYS & AVIATION (2068)**  
**FY2021 GOVERNOR'S BUDGET**  
**TOK DISTRICT, CHART 1C**

Eng/Arch IV  
25-1914 SS 26

**TOK (HEB)**

Tok M&O Superintendent  
25-1901 SS 21

Admin Assistant III  
25-1904 GP 15

Admin Assistant I  
25-3489 GP 12

**DELTA (JJB)**

Equipment Operator (F1)  
25-1947 LL 51

Equipment Operator (J2)  
25-1948 LL 53

Equipment Operator (J2)  
25-1949 LL 53

Equipment Operator (J2)  
25-1950 LL 53

Equipment Operator (J2)  
25-1951 LL 53

Equipment Operator (J2)  
25-1975 LL 53

Equipment Operator (J2)  
25-2199 LL 53

Equipment Operator (J1)  
25-1938(s) LL 54

Equipment Operator (SJ2)  
25-1967(s) LL 56

**NORTHWAY (HEC)**

Equipment Operator (J3/L)  
25-2002 LL 52

Equipment Operator (J2)  
25-2005 LL 53

Equipment Operator (J2)  
25-2021 LL 53

Equipment Operator (J2)  
25-3674 LL 53

Equipment Operator (J2)  
25-2003(s) LL 53

**EAGLE (JKA)**

Equipment Operator (J3/L)  
25-2013 LL 52

Equipment Operator (J2)  
25-2012(s) LL 53

Equipment Operator (J2)  
25-2014(s) LL 53

**SOUTH FORK (JKF)**

Equipment Operator (J3/L)  
25-1983(s) LL 52

Equipment Operator (J1/J2)  
25-2009(s) LL 54/53

Equipment Operator (J2)  
25-2010(s) LL 53

Equipment Operator (J2)  
25-2011(s) LL 53

**KEY:**  
 F1 – Foremen I  
 F2 – Foremen II  
 J1 – Journey I  
 J2 – Journey II  
 J3/L – Journey III / Lead  
 SJ1 – Sub-Journey I  
 SJII – Sub-Journey II  
 L – Lead  
 S – PPT/SACL

\*All PCNs PFT unless otherwise designated  
 \*\*(s) designates PPT/seasonal

**TOK (HEB)**

Equipment Operator (F1)  
25-1957 LL 51

Equipment Operator (J2)  
25-1958 LL 53

Equipment Operator (J2)  
25-1962 LL 53

Equipment Operator (J2)  
25-1977 LL 53

Equipment Operator (J2)  
25-1992 LL 53

Equipment Operator (J2)  
25-2089 LL 53

Equipment Operator (J2)  
25-1959(s) LL 53

Equipment Operator (J2)  
25-3523(s) LL 53

Equipment Operator (J1)  
25-1966(s) LL 54

Equipment Operator (SJ2)  
25-1994(s) LL 56

**TRIMMS CAMP (HHH)**

Equipment Operator (J3/L)  
25-3428 LL 52

Equipment Operator (J2)  
25-1911 LL 53

Equipment Operator (J2)  
25-2083(s) LL 53

Equipment Operator (J2)  
25-2085(s) LL 53

Tok District

Positions	Total
Full-time	23
Seasonal	15
Non Perm	0
<b>Total</b>	<b>38</b>

**DEPARTMENT OF TRANSPORTATION & PUBLIC FACILITIES  
HIGHWAYS, AVIATION AND FACILITIES (408)  
NORTHERN REGION HIGHWAYS & AVIATION (2068)  
FY2021 GOVERNOR'S BUDGET  
TAZLINA DISTRICT, CHART 1D**

Eng/Arch IV  
25-1914 SS 26

**TAZLINA  
(HCF)**

Tazlina M&O Superintendent  
25-2241 SS 21

Admin Assistant III  
25-2244 GP 15

Officer Assistant I  
25-3490 GP 10

**ERNESTINE  
(EAD)**

**NELCHINA  
(HBH)**

**SLANA  
(HDD)**

**TAZLINA  
(HCF)**

Equipment Operator (J3/L)  
25-2174 LL 52

Equipment Operator (J3/L)  
25-2193 LL 52

Equipment Operator (J3/L)  
25-2196 LL 52

Equipment Operator (F1)  
25-2179 LL 51

Equipment Operator (J2)  
25-2176 LL 53

Equipment Operator (J2)  
25-2191 LL 53

Equipment Operator (J2)  
25-2177 LL 53

Equipment Operator (J2)  
25-2180 LL 53

Equipment Operator (SJ1)  
25-1831(s) LL 58

Equipment Operator (J2)  
25-2178 LL 53

Equipment Operator (J2)  
25-2195 LL 53

Equipment Operator (J2)  
25-2171(s) LL 53

Equipment Operator (J2)  
25-2181 LL 53

Equipment Operator (SJ1)  
25-2213(s) LL 58

Equipment Operator (J2)  
25-2201 LL 53

Equipment Operator (J2)  
25-2197 LL 53

Equipment Operator (J2)  
25-2211(s) LL 53

Equipment Operator (J2)  
25-2182 LL 53

Equipment Operator (SJ1)  
25-N09047 LL 58

Equipment Operator (J2)  
25-2189(s) LL 53

**PAXSON  
(HHD)**

Equipment Operator (J2)  
25-2215(s) LL 53

Equipment Operator (J2)  
25-2183 LL 53

Equipment Operator (SJ1)  
25-N09048 LL 58

Equipment Operator (SJ1)  
25-2214(s) LL 58

Equipment Operator (J3/L)  
25-2188 LL 52

Equipment Operator (SJ1)  
25-2216(s) LL 58

Equipment Operator (J2)  
25-2185 LL 53

Equipment Operator (SJ1)  
25-N09049 LL 58

Equipment Operator (J2)  
25-2209(s) LL 53

Equipment Operator (J2)  
25-1939 LL 53

Tazlina District	
Positions	Total
Full-time	25
Seasonal	12
Non Perm	6
<b>Total</b>	<b>43</b>

Equipment Operator (J2)  
25-2186 LL 53

Equipment Operator (SJ1)  
25-N09050 LL 58

Equipment Operator (J2)  
25-2190 LL 53

Equipment Operator (J2)  
25-2190 LL 53

Equipment Operator (J2)  
25-2192 LL 53

Equipment Operator (SJ1)  
25-N09051 LL 58

Equipment Operator (J2)  
25-2194 LL 53

Equipment Operator (J2)  
25-2194 LL 53

Equipment Operator (J2)  
25-2198(s) LL 53

Equipment Operator (SJ1)  
25-N09052 LL 58

Equipment Operator (J2)  
25-2208(s) LL 53

Equipment Operator (J2)  
25-2208(s) LL 53

Equipment Operator (SJ2)  
25-2204(s) LL 56

\*All PCNs PFT unless otherwise designated  
\*\*(s) designates PPT/seasonal

**KEY:**  
F1 – Foremen I  
F2 – Foremen II  
J1 – Journey I  
J2 – Journey II  
J3/L – Journey III / Lead  
SJ1 – Sub-Journey I  
SJII – Sub-Journey II  
L – Lead  
S – PPT/SACL



**DEPARTMENT OF TRANSPORTATION & PUBLIC FACILITIES  
HIGHWAYS, AVIATION AND FACILITIES (408)  
NORTHERN REGION HIGHWAYS & AVIATION (2068)  
FY2021 GOVERNOR'S BUDGET  
DALTON DISTRICT, CHART 2**

Eng/Arch IV  
25-1914 SS 26

FAIRBANKS  
(JBA)

FAIRBANKS  
(JBA)

Dalton M&O Superintendent  
25-1903 SS 21

Admin Assistant III  
25-2073 GP 15  
Admin Assistant I  
25-2117 GP 12

Equip Operator (F1)  
25-2041 LL 51

Equip Operator (F1)  
25-3661 LL 51

**FBKS/DALTON  
ROVING (JCN)**

- Equip Operator (J2)  
25-2026 LL 53
- Equip Operator (J2)  
25-2038 LL 53
- Equip Operator (J2)  
25-2045 LL 53
- Equip Operator (J2)  
25-3672 LL 53
- Equip Operator (J2)  
25-3662 LL 53
- Equip Operator (SJ2)  
25-N11047 LL 56
- Equip Operator (SJ2)  
25-N11048 LL 56
- Equip Operator (SJ2)  
25-N11049 LL 56
- Equip Operator (SJ2)  
25-N11050 LL 56
- Equip Operator (SJ2)  
25-N11064 LL 56
- Equip Operator (SJ2)  
25-N11065 LL 56
- Equip Operator (SJ2)  
25-N11066 LL 56
- Equip Operator (SJ2)  
25-N11067 LL 56

**LIVENGOOD  
(JQA)**

- Equip Operator(J3/L)  
25-1980 LL 52
- Equip Operator (J2)  
25-1981 LL 53
- Equip Operator (J2)  
25-1985 LL 53
- Equip Operator (J2)  
25-2008 LL 53
- Equip Operator (J2)  
25-2060 LL 53
- Equip Operator (J2)  
25-3669 LL 53
- Equip Operator (SJ2/J1)  
25-2050 LL 56/54

Dalton District	
Positions	Total
Full-time	63
Seasonal	2
Non Perm	8
<b>Total</b>	<b>73</b>

**JIM RIVER  
(KEE)**

- Equip Operator (J3/L)  
25-2032 LL 52
- Equip Operator (J2)  
25-2053 LL 53
- Equip Operator (J1/J2)  
25-2058 LL 54/53
- Equip Operator (J2)  
25-2066 LL 53
- Equip Operator (SJ2/J1)  
25-2055 LL 56/54

**MANLEY (JRC)**

- Equip Operator (J3/L)  
25-1982 LL 52
- Equip Operator (J2)  
25-1960 LL 53
- Equip Operator (J1/J2)  
25-1969 LL 54/53
- Equip Operator (J2)  
25-1971 LL 53
- Equip Operator (SJ2/J1)  
25-2069 LL 56/54

**COLDFOOT  
(KRB)**

- Equip Operator (J3/L)  
25-2034 LL 52
- Equip Operator (J2)  
25-2042 LL 53
- Equip Operator (J2)  
25-3668 LL 53
- Equip Operator (J2)  
25-2086(s) LL 53

**SEVEN MILE  
(JQG)**

- Equip Operator (J3/L)  
25-2030 LL 52
- Equip Operator (J2)  
25-2031 LL 53
- Equip Operator (J2)  
25-2065 LL 53
- Equip Operator (J2)  
25-2091 LL 53
- Equip Operator (SJ2/J1)  
25-2059 LL 56/54

**CHANDALAR  
(LEA)**

- Equip Operator (J3/L)  
25-2028 LL 52
- Equip Operator (J2)  
25-2051 LL 53
- Equip Operator (J2)  
25-2062 LL 53
- Equip Operator (J2)  
25-2070 LL 53
- Equip Operator (J2)  
25-2090 LL 53
- Equip Operator (J2)  
25-3664 LL 53
- Equip Operator (J2)  
25-2036(s) LL 53
- Equip Operator (SJ2/J1)  
25-2206 LL 56/54

**SAG RIVER  
(LED)**

- Equip Operator (J3/L)  
25-2029 LL 52
- Equip Operator (J2)  
25-2035 LL 53
- Equip Operator (J2)  
25-2040 LL 53
- Equip Operator (J2)  
25-2057 LL 53
- Equip Operator (SJ2/J1)  
25-2019 LL 56/54
- Equip Operator (SJ2/J1)  
25-2080 LL 56/54

**KEY:**

- F1 – Foremen I
- F2 – Foremen II
- J1 – Journey I
- J2 – Journey II
- J3/L – Journey III / Lead
- SJ1 – Sub-Journey I
- SJII – Sub-Journey II
- L – Lead
- S – PPT/SACL

\*All PCNs PFT unless otherwise designated  
\*\*(s) designates PPT/seasonal

**DEPARTMENT OF TRANSPORTATION & PUBLIC FACILITIES  
HIGHWAYS, AVIATION AND FACILITIES (408)  
NORTHERN REGION HIGHWAYS & AVIATION (2068)  
FY2021 GOVERNOR'S BUDGET  
DALTON DISTRICT, CHART 2B**

FAIRBANKS  
(JBA)

Dalton M&O Superintendent  
25-1903 SS 21

**BARROW/UTQIAGVIK  
(MEA)**

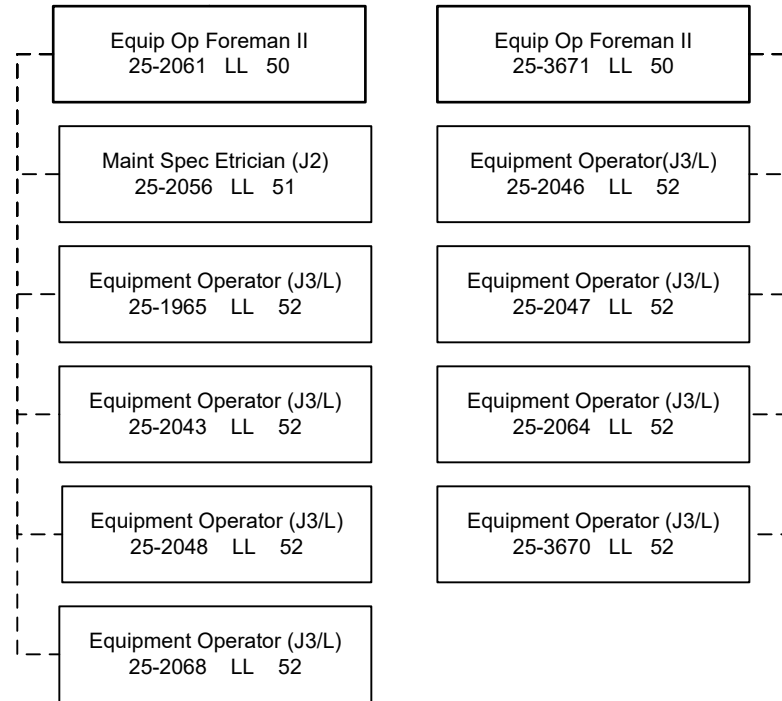
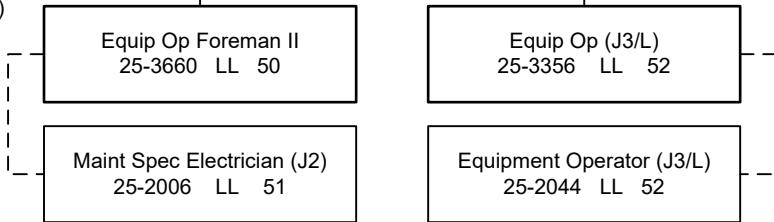
**DEADHORSE  
(MBC)**

Rural Airport Foreman  
25-3665 LL 49

Rural Airport Foreman  
25-2023 LL 49

(Work alternate  
workweeks)

(Work alternate  
workweeks)



**KEY:**  
F1 – Foremen I  
F2 – Foremen II  
J1 – Journey I  
J2 – Journey II  
J3/L – Journey III / Lead  
SJ1 – Sub-Journey I  
SJII – Sub-Journey II  
L – Lead  
S – PPT/SACL

\*All PCNs PFT unless otherwise designated



**DEPARTMENT OF TRANSPORTATION & PUBLIC FACILITIES  
HIGHWAYS, AVIATION AND FACILITIES (408)  
NORTHERN REGION HIGHWAYS & AVIATION (2068)  
FY2021 GOVERNOR'S BUDGET  
WESTERN DISTRICT, CHART 3**

**NOME  
(HTA)**

Eng/Arch IV  
25-1914 SS 26

Western M&O Superintendent  
25-2162 SS 21

Admin Asst III  
25-2138 GP 15

Stock & Parts Svc III  
25-1253 LL 54

**KOTZEBUE  
AIRPORT  
(KAA)**

Rural Airport Foreman  
25-2128 LL 49

Equipment Operator (J3/L)  
25-2129 LL 52

Equipment Operator (J3/L)  
25-2130 LL 52

Equipment Operator (J3/L)  
25-2137 LL 52

Equipment Operator (J3/L)  
25-3655 LL 52

Equipment Operator (J3/L)  
25-3656 LL 52

Equipment Operator (J3/L)  
25-3658 LL 52

Equipment Operator (J3/L)  
25-2147 LL 52

Office Assistant III  
25-2142 GP 11

**NOME  
AIRPORT  
(HTA)**

Rural Airport Foreman  
25-2123 LL 49

Equipment Operator (J3/L)  
25-1671 LL 52

Equipment Operator (J3/L)  
25-2125 LL 52

Equipment Operator (J3/L)  
25-2139 LL 52

Equipment Operator (J3/L)  
25-2140 LL 52

Equipment Operator (J3/L)  
25-2146 LL 52

Equipment Operator (J3/L)  
25-2154 LL 52

Equipment Operator (J1/J2/J3/L)  
25-3657 LL 54/53/52

Office Assistant III  
25-1783 GP 11

**NOME  
HIGHWAYS  
(HTA)**

Equipment Operator (F1)  
25-2124 LL 51

Equipment Operator (J2)  
25-2126 LL 53

Equipment Operator (J2)  
25-2135 LL 53

Equipment Operator (J2)  
25-2136 LL 53

Equipment Operator (J2)  
25-2151 LL 53

Equipment Operator (J2)  
25-2152 LL 53

Equipment Operator (J1/J2)  
25-2153 LL 54/53

**ST. MARY'S  
(EWG)**

Equipment Operator (F1)  
25-1178 LL 51

Equipment Operator (J2)  
25-1181 LL 53

Equipment Operator (J1/J2)  
25-1472 LL 54/53

**UNALAKLEET  
AIRPORT  
(HQA)**

Equipment Operator (F1)  
25-2132 LL 51

Equipment Operator (J1/J2)  
25-2037 LL 54/53

Equipment Operator (J2)  
25-2149 LL 53

**KEY:**  
F1 – Foremen I  
F2 – Foremen II  
J1 – Journey I  
J2 – Journey II  
J3/L – Journey III / Lead  
SJ1 – Sub-Journey I  
SJII – Sub-Journey II  
L – Lead  
S – PPT/SACL

\*All PCNs PFT unless otherwise designated

Western District	
Positions	Total
Full-time	34
Seasonal	0
Non Perm	0
<b>Total</b>	<b>34</b>