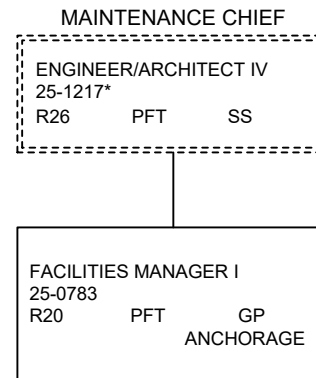


**DEPARTMENT OF TRANSPORTATION & PUBLIC FACILITIES
RDU: HIGHWAYS, AVIATION, AND FACILITIES (408)
COMPONENT: WHITTIER ACCESS AND TUNNEL (2510)
FY2021 GOVERNOR'S BUDGET**

COMPONENT TOTAL:	
FULLTIME POSITIONS:	1
PARTTIME POSITIONS:	0
NONPERM POSITIONS:	0
TOTAL	1



*PCN 25-1217 is budgeted in the Central Region Highways and Aviation budget component