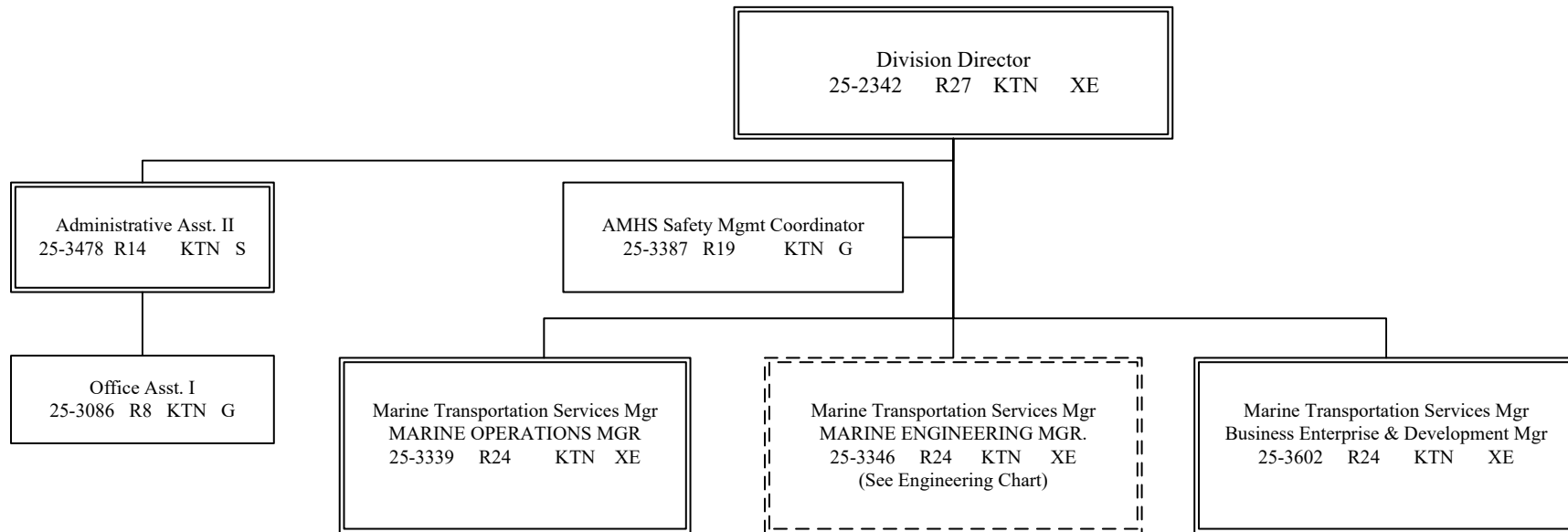


Department of Transportation & Public Facilities
Alaska Marine Highway System
Vessel Operations Management (629)

FY2021 Governor's Budget
 Position Counts: 28 PFT



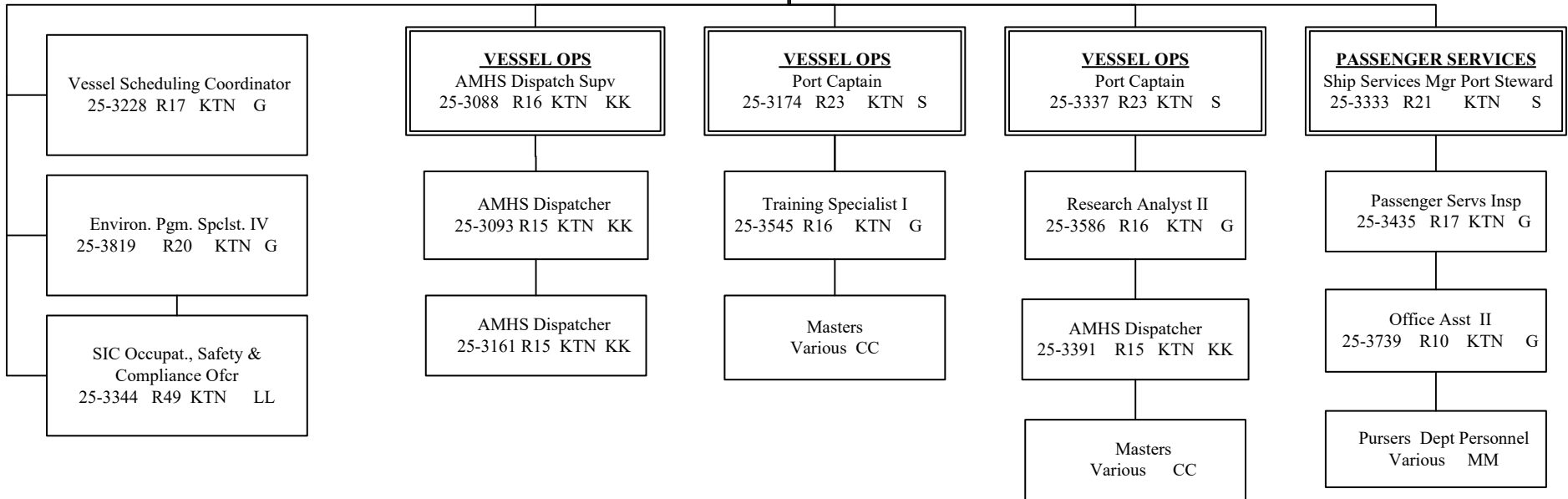
G = General Gov., AK State Employees Assoc.
 S = Supervisory, AK Public Employees Assoc.
 XE = Exempt

KTN = Ketchikan JNU = Juneau
 ANCH = Anchorage

All positions are PFT unless otherwise noted.
 ---Positions not budgeted in this componet

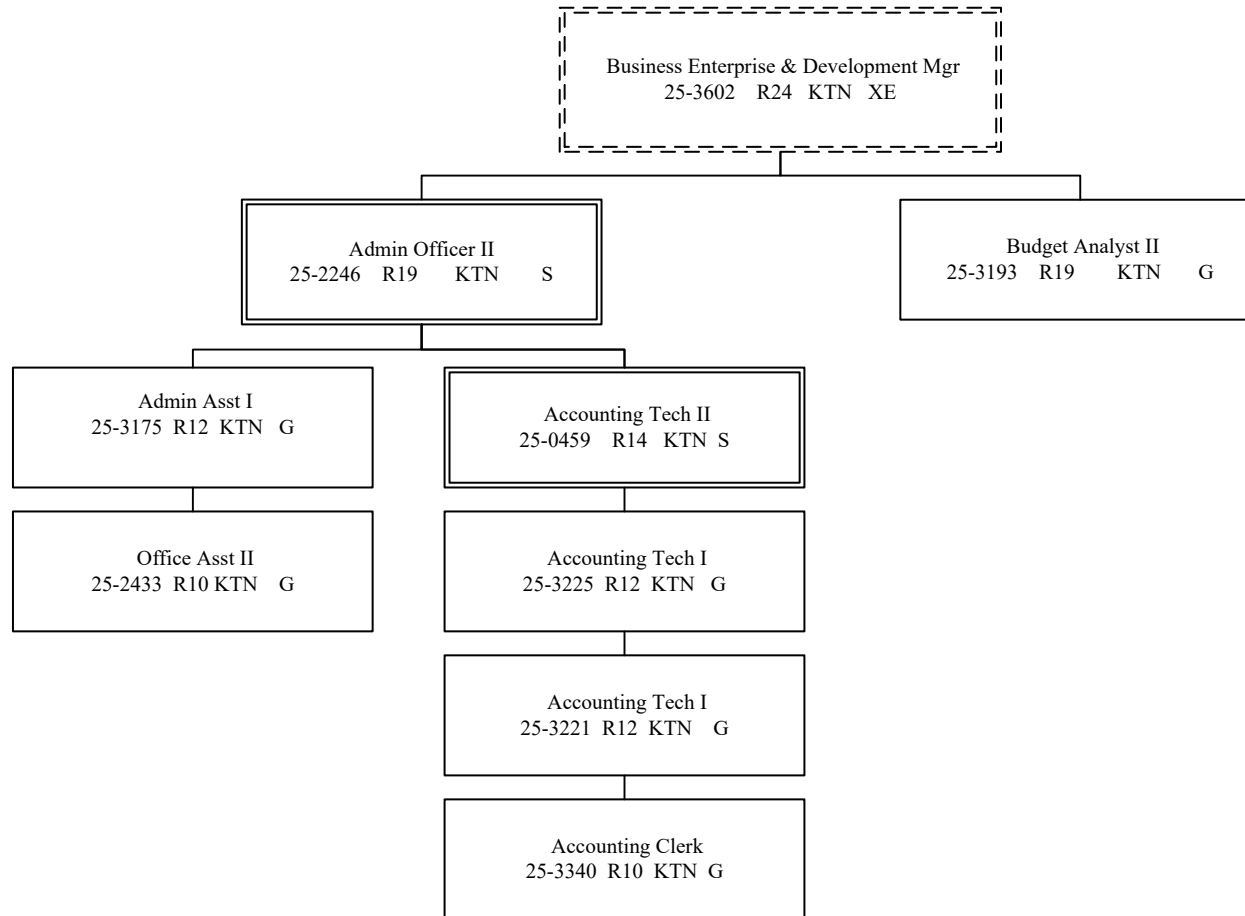
Department of Transportation & Public Facilities
Alaska Marine Highway System
Vessel Operations Management (629)

Marine Transportation Services Manager
 OPERATIONS MANAGER
 25-3339 R24 KTN XE



G = General Gov., AK State Employees Assoc.
 S = Supervisory, AK Public Employees Assoc.
 XE = Exempt
 KK = Confidential Employees Assoc.
 KTN = Ketchikan

Department of Transportation & Public Facilities
Alaska Marine Highway System
Vessel Operations Management (629)



G = General Gov., AK State Employees Assoc.
 S = Supervisory, AK Public Employees Assoc.
 XE = Exempt
 KTN = Ketchikan

All positions are PFT unless otherwise noted.