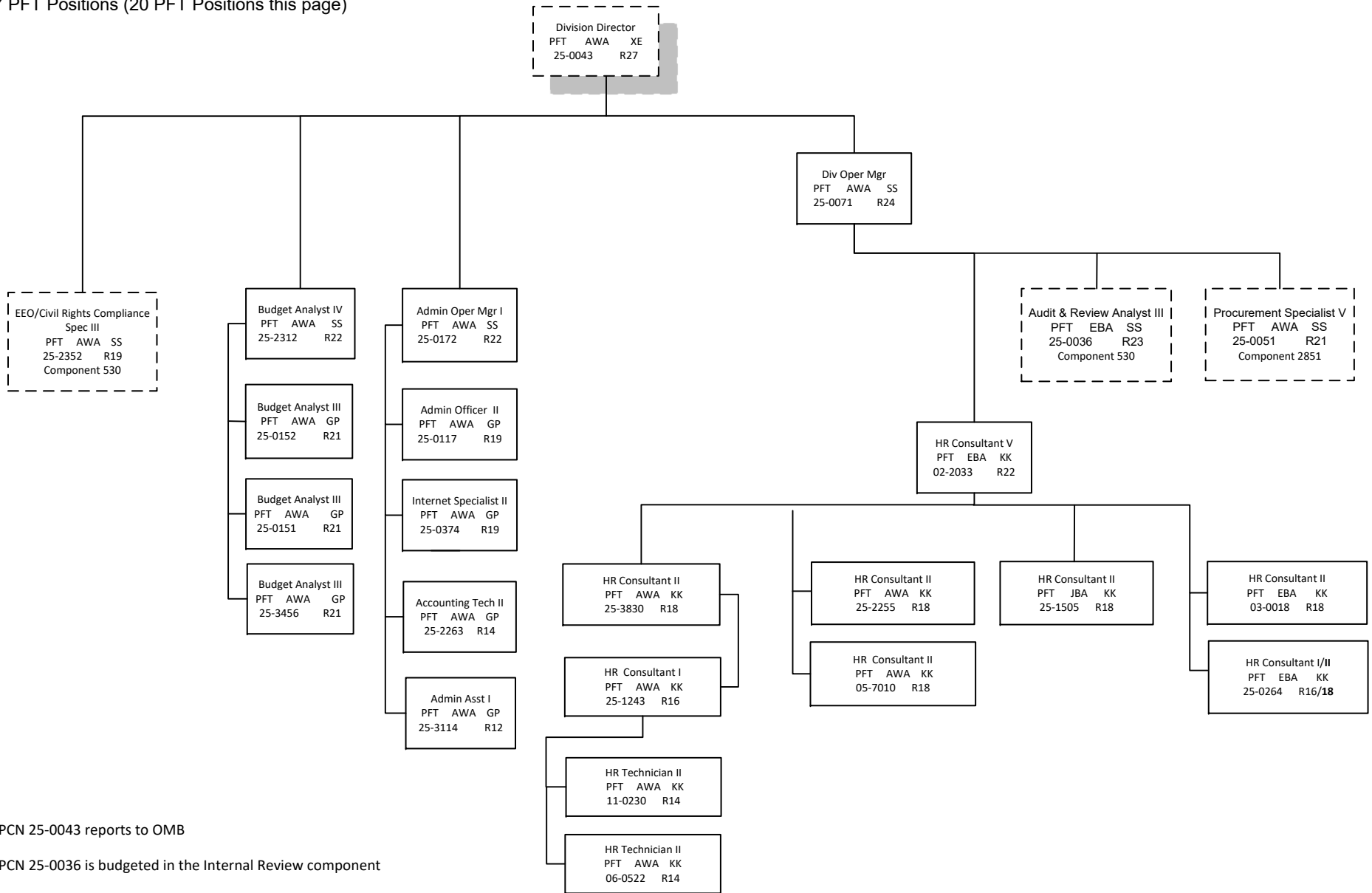


DEPARTMENT: Transportation (25)
 RDU: Administration and Support (333)
 COMPONENT: Statewide Administrative Services (537)
 FY2021 Governor's Budget
 57 PFT Positions (20 PFT Positions this page)

Legend
 AWA = Juneau
 JBA = Fairbanks
 EBA = Anchorage



*PCN 25-0043 reports to OMB

*PCN 25-0036 is budgeted in the Internal Review component

*PCN 25-2352 is budgeted in the Civil Rights component

*PCN 25-0051 is budgeted in the Statewide Procurement component

DEPARTMENT: Transportation (25)
 RDU: Administration and Support (333)
 COMPONENT: Statewide Administrative Services (537)
 FY2021 Governor's Budget
 57 PFT Positions (37 PFT Positions this page)

Legend
 AWA = Juneau
 JBA = Fairbanks
 EBA = Anchorage

