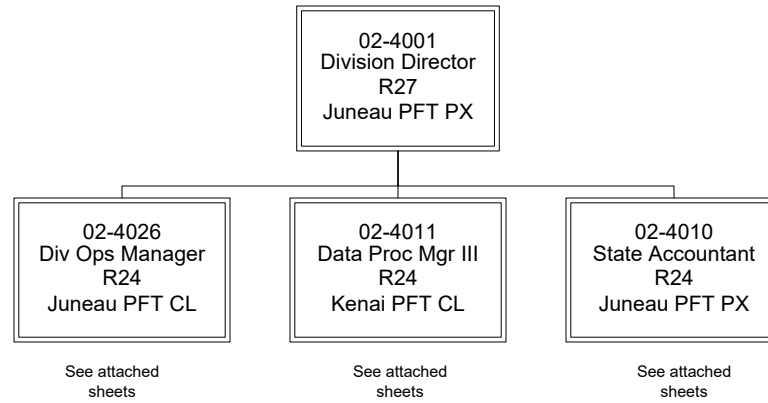
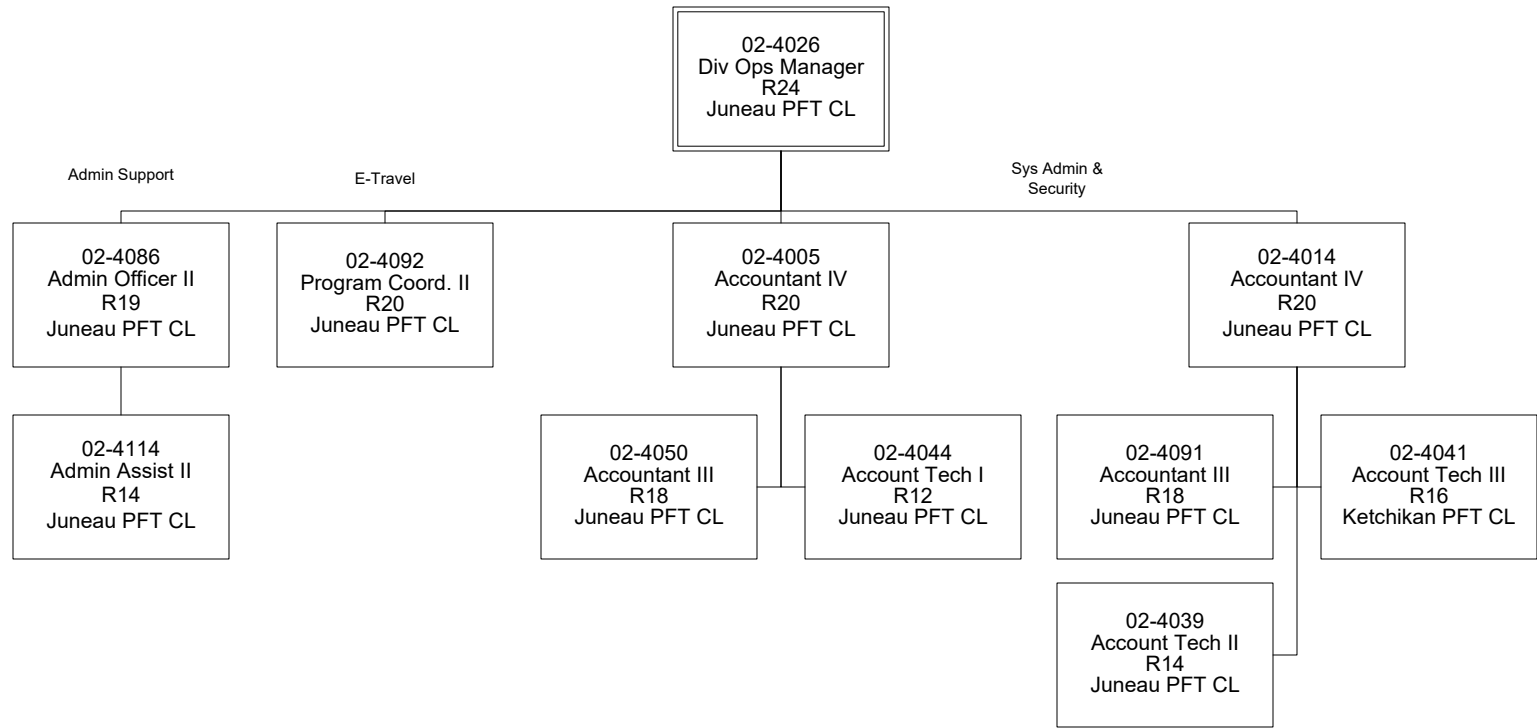
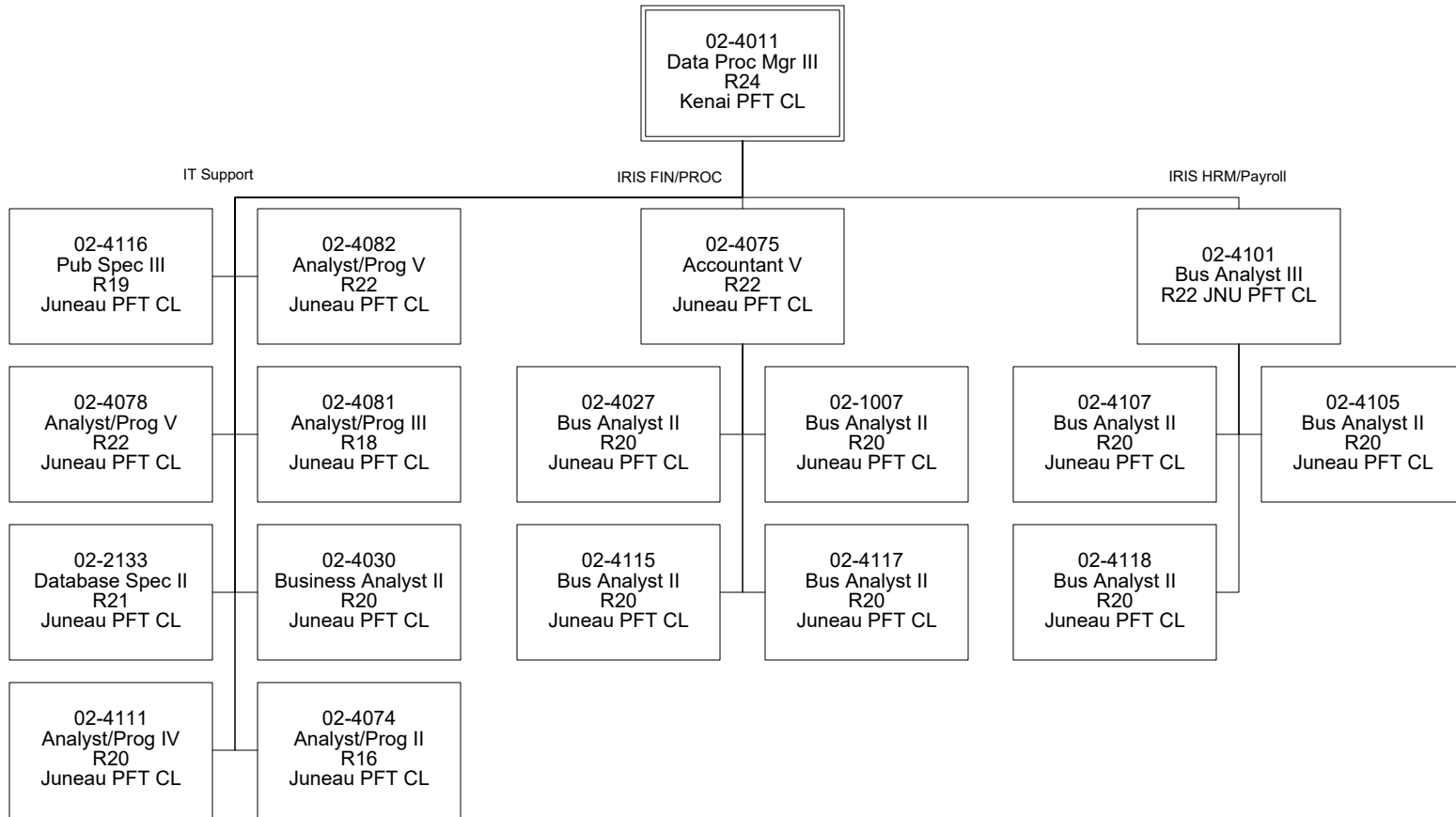


Department of Administration
Finance (59) & E-Travel (2966)
RDU: Centralized Admin Services (13)
FY2022 Governor's Budget
Position Totals PFT - 50







02-4010
State Accountant
R24
Juneau PFT PX

Payroll Services

Statewide Single
Audit

Accounting
Services

02-4035
Payroll Manager
R22
Juneau PFT CL

01-712X
Audit & Review
Analyst III
R23
Juneau PFT CL

11-0204
Accountant V
R22 JNU PFT CL

02-4040
Accountant V
R22
Juneau PFT CL

02-4020
Payroll Spec II
R18
Juneau PFT CL

02-4025
Payroll Spec III
R20
Juneau PFT CL

02-4012
Accountant IV
R20
Juneau PFT CL

02-4029
Accounting Tech III
R16
Juneau PFT CL

02-4004
Accountant IV
R20
Juneau PFT CL

02-4036
Accountant IV
R20
Juneau PFT CL

02-4085
Payroll Spec I
R16
Juneau PFT CL

02-4023
Payroll Spec II
R18
Juneau PFT CL

02-4021
Accountant III
R18
Juneau PFT CL

02-4013
Accountant IV
R20
Juneau PFT CL

02-4017
Accountant IV
R20
Juneau PFT CL

02-4022
HR Tech II
R14
Juneau PFT CL

02-4052
Payroll Spec I
R16
Juneau PFT CL

02-4038
Accountant IV
R20
Juneau PFT CL

02-4043
HR Tech II
R14
Juneau PFT CL