

# **State of Alaska FY2022 Governor's Operating Budget**

## **Department of Natural Resources Mining, Land & Water Component Budget Summary**

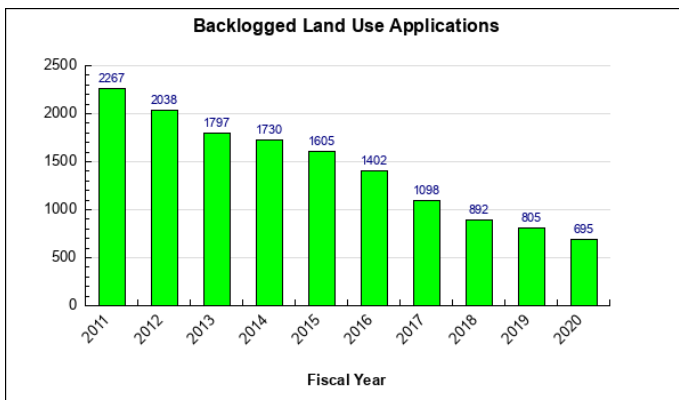
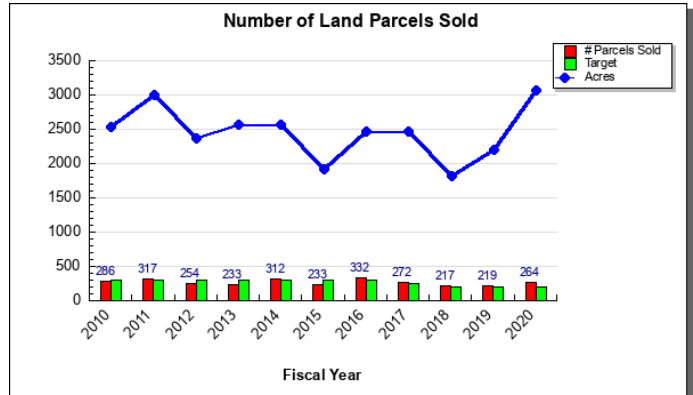
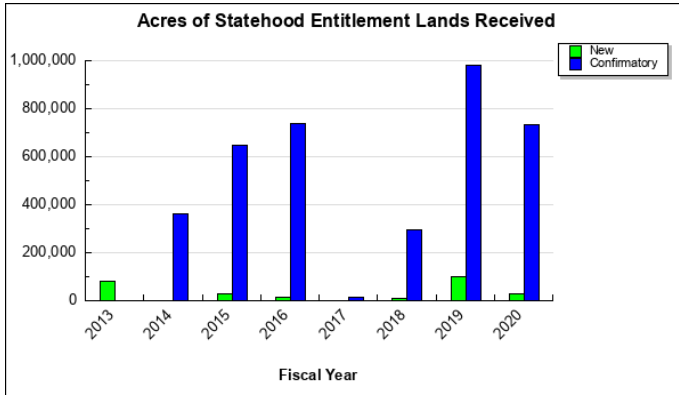
**Component: Mining, Land & Water**

**Contribution to Department's Mission**

Provide for the appropriate use and management of Alaska's state owned land and water, aiming toward maximum use consistent with the public interest.

**Results**

(Additional performance information is available on the web at <https://omb.alaska.gov/results>.)



Target: Reduce by 5% the total number of identified sites that are encumbered by hazardous waste, contamination, unauthorized use, and other material or appurtenances.

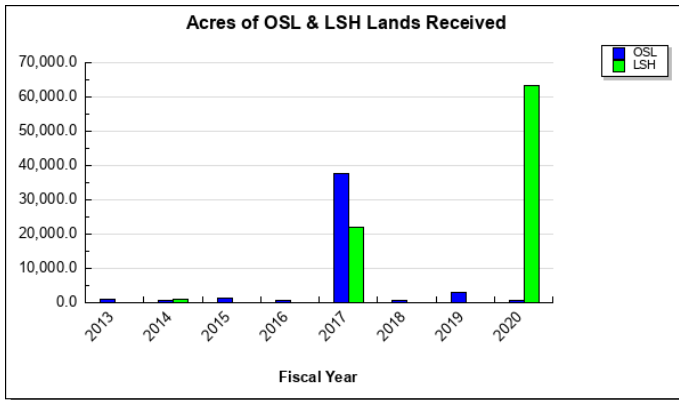
**Core Services**

- Acquire land for the citizens of the State of Alaska.
- Defend and assert state ownership interests.
- Defend access to state land and water.
- Create plans to direct management of state land and water.
- Sell and transfer land into private and municipal ownership.
- Issue short and long term authorizations for use of state land and water.
- Provide regulatory oversight for water use, dam safety, unorganized borough platting review, and mine reclamation for entire state.
- Collect revenues from the use and disposal of state land and water.
- Provide active stewardship of state land and water.

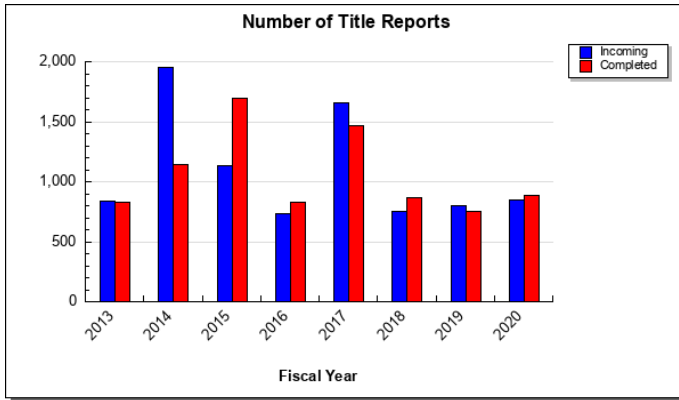
## Measures by Core Service

(Additional performance information is available on the web at <https://omb.alaska.gov/results>.)

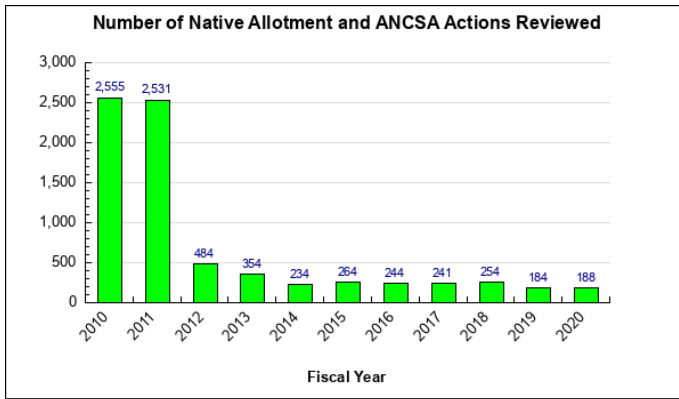
### 1. Acquire land for the citizens of the State of Alaska.



### 2. Defend and assert state ownership interests.



### 3. Defend access to state land and water.

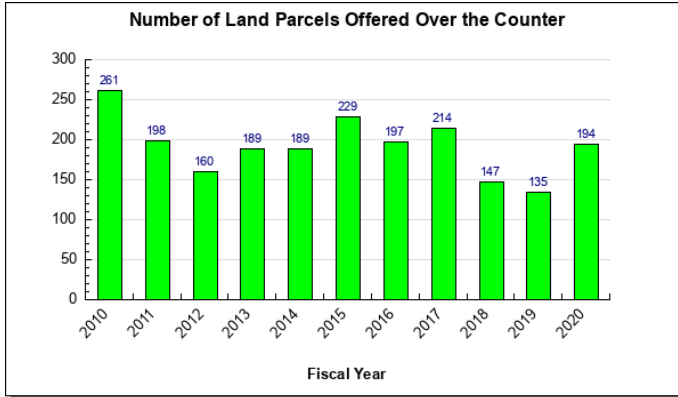
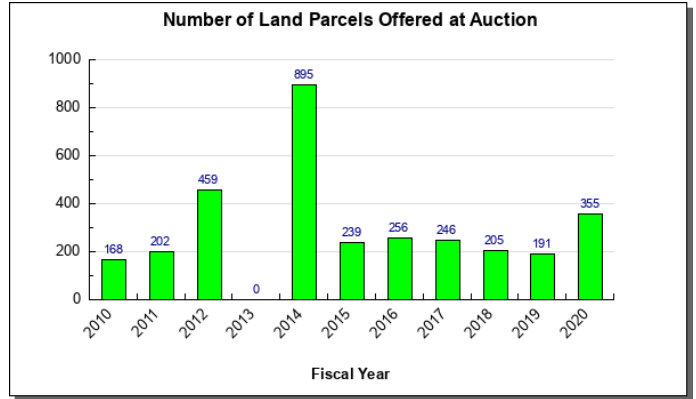
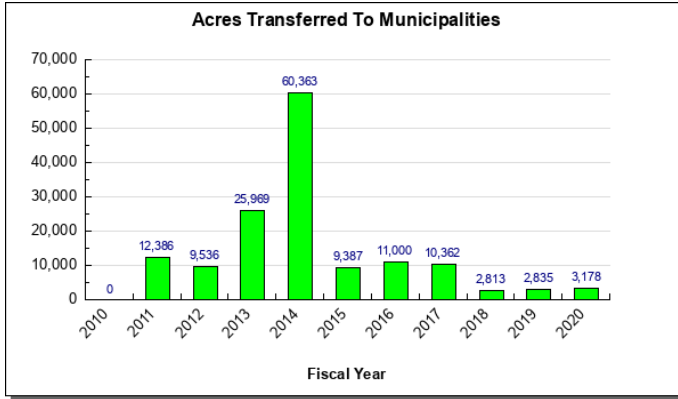


### 4. Create plans to direct management of state land and water.

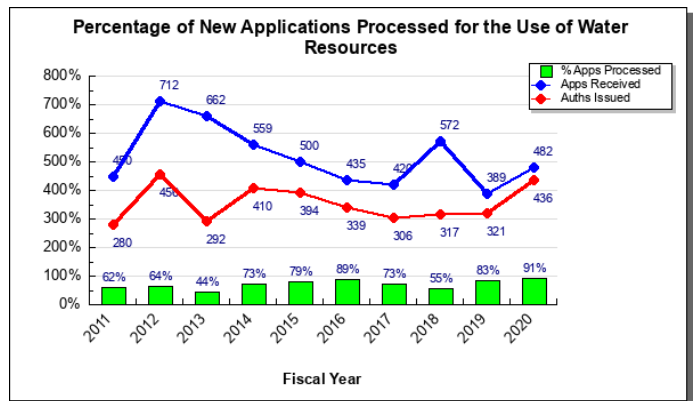
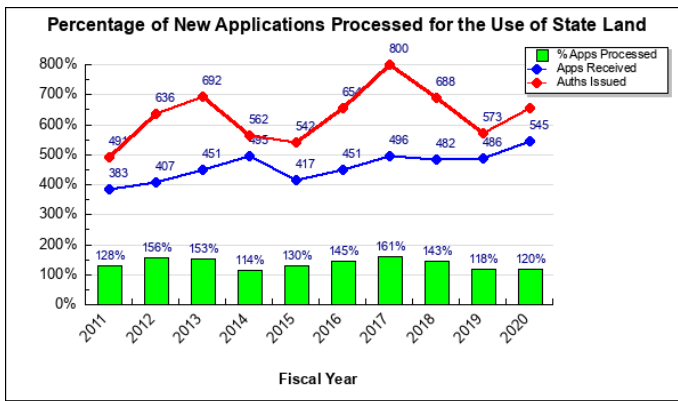
Target: Develop land management plans and classify lands for settlement to support future municipal entitlements and land sales, or in other categories to support other forms of development including agriculture, forestry, and

mineral development.

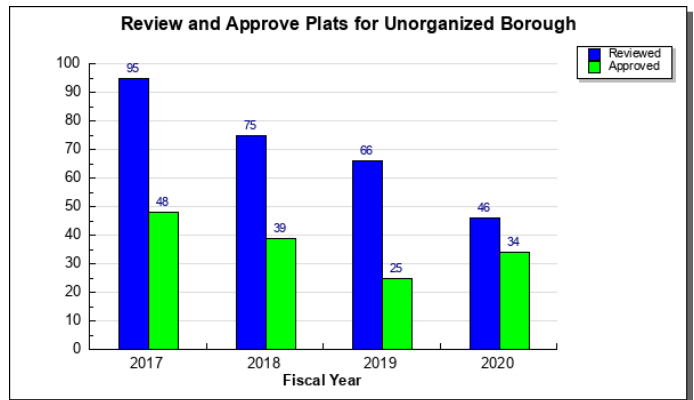
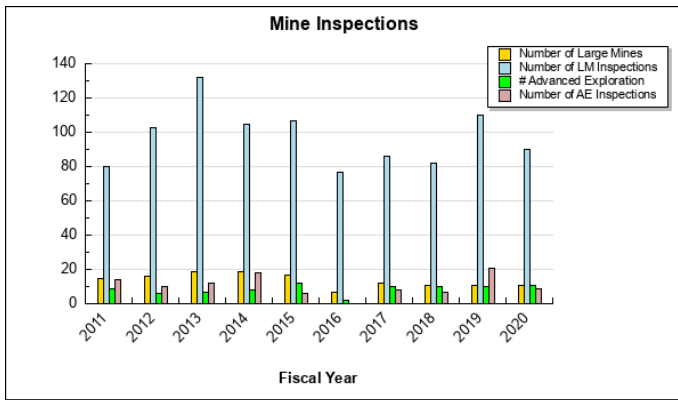
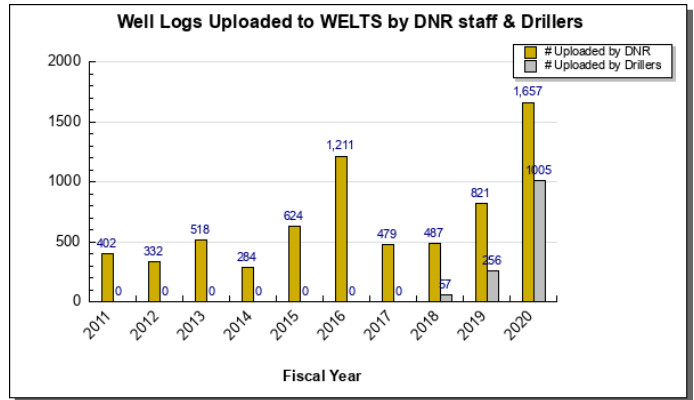
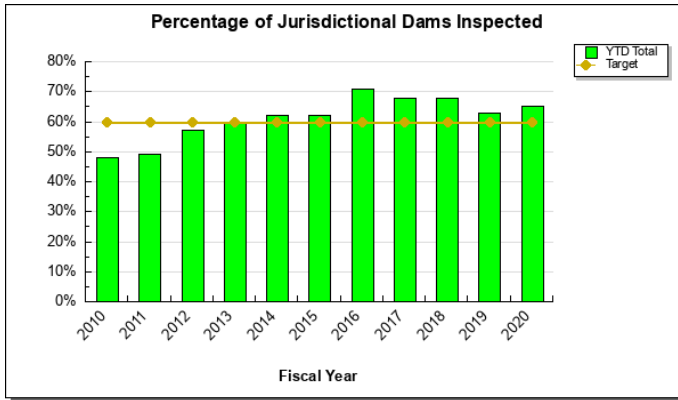
5. Sell and transfer land into private and municipal ownership.



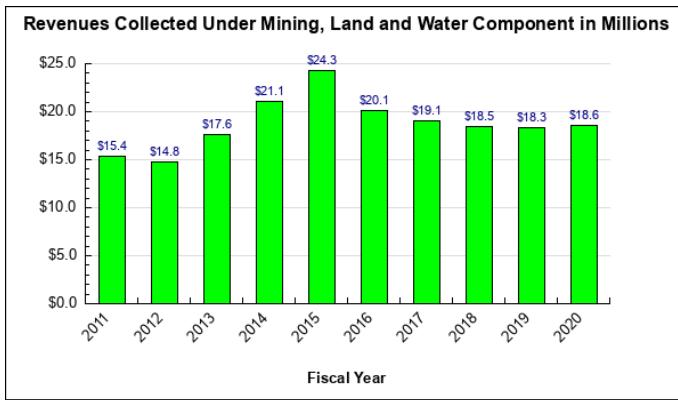
6. Issue short and long term authorizations for use of state land and water.



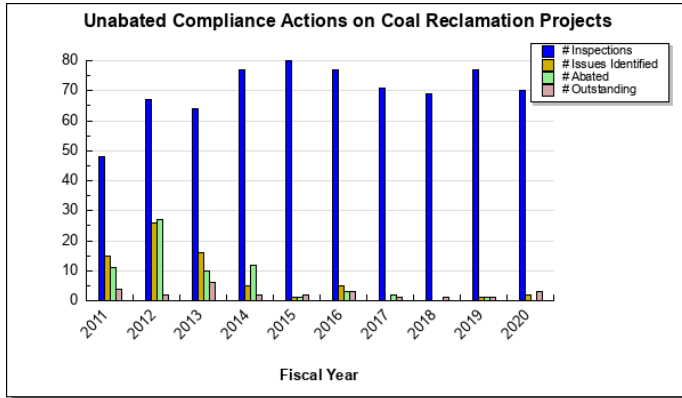
7. Provide regulatory oversight for water use, dam safety, unorganized borough platting review, and mine reclamation for entire state.



8. Collect revenues from the use and disposal of state land and water.



**9. Provide active stewardship of state land and water.**



**Major Component Accomplishments in 2020**

**Acquire state land entitlement, defend, and plan for use of state land**

Reviewed and received title to 30,132 acres of new statehood entitlement land. Converted 15 federal mining claims to state ownership, along with additional lands in support of the Graphite One mineral project and continued working with miners to bring additional federal mining claims into state ownership. The state’s entitlement was credited 439 acres due to Native allotment reconveyances and corrections to prior federal deeds. In reviewing and approving over 735,000 acres of confirmatory title, Realty Services Section (RSS) staff confirmed that approximately 20,000 acres of previously tentatively approved lands were, in fact, navigable waters or were overcharged acres. These 20,000 acres were credited to the state’s remaining entitlement.

Opened approximately 1.1 million acres of land to state selection and mineral entry by working with the Bureau of Land Management (BLM) to remove Alaska Native Claims Settlement Act (ANCSA) Sec. 17(d)(1) and (d)(2) public land order withdrawals within the 40 Mile and Bering Glacier Regional Management Plan (RMP) areas. The state took title to 20,000 acres within the area.

Began working with BLM to remove certain ANCSA Sec. 17(d)(1) withdrawals in the Seward Peninsula/Kobuk RMP; once removed approximately one million acres will be open for selection and mineral entry. RSS will continue to work closely with BLM on lifting additional ANCSA and non-ANCSA withdrawals in the Goodnews Bay and Ring of Fire RMPs, and opening more lands to state selection, conveyance, and mineral entry.

Continued review of federal planning documents and related actions through the Alaska National Interest Lands Conservation Act (ANILCA) program to advocate for the state’s interest on issues affecting public use.

**An adequate amount of state land is transferred into private ownership and to municipalities for settlement, recreation, development, and other uses.**

Sold 264 parcels totaling 3,071 acres. The results are a combination of the annual land sale auction, year-round over-the-counter sales, and Remote Recreation Cabin Sites program’s staking authorizations that made it to the purchase stage.

Transferred a total of 3,178.34 acres to the Municipality of Skagway (2,860.94 acres); the City and Borough of Yakutat (0.49 acres) and the North Slope Borough (approximately 316.91 acres).

The North Slope Management Plan, affecting 12 million acres of uplands, is in progress and is expected to be ready for adoption in FY2021. A great deal of the land covered by that plan is expected to be classified in categories that support development.

Received and completed reviews for 42 ANCSA related documents and 146 documents relating to Native allotments. ANCSA related documents are reviewed to ensure public access is maintained through the reservation of RS 2477 trails and ANCSA 17(b) easements. They are also reviewed for potential emerged islands and protecting state ownership interests in navigable waterways.

**Businesses, individuals, and other entities obtain authorizations necessary for the environmentally sound use and development of state land and resources**

Completed periodic safety inspections on 17 state-jurisdictional dams to ensure structural integrity.

Received 1,027 applications and issued 1,091 water and land authorizations to support industry, other state agencies and private citizen for the use and development of state lands.

Completed 70 inspections and issued two new notice of violations during the year under the Coal Regulatory program.

Continued work on advanced exploration projects including Donlin, Palmer, Graphite One, Arctic/Bornite, Pebble, Dotson Ridge, Niblack, Avidian (Golden Zone), Healy Valley and Hoseanna-Emma Creek.

Received 846 title report requests and completed 881 title reports in the Realty Services section. Of those, 389 reports were for land disposal contract initiations, conveyances or subdivision development, 14 were for the Mental Health Trust Land Office, 1 was for the Division of Oil and Gas for Lease Sales Administration and 82 were for the State Pipeline Coordinators Office . There were 395 reports covering various divisional authorizations and acquisition interests.

**Ensure that all state land is unencumbered by unauthorized use, contamination, or waste that makes it unavailable for other public use and development**

Construction was completed on the Cripple Creek bridge and reclamation activities are in progress for phase I of the Cripple Creek Pit project under the Abandoned Mine Land program.

Continued to evaluate and coordinate contaminated sites on Division of Mining, Land, and Water managed land, facilitating better documentation of sites and increased communication with Department of Environmental Conservation (DEC) and federal agencies. DMLW stood up the SAIL section (Statewide Abatement of Impacted Lands) to concentrate response and coordination of abatement efforts into one section within the Division. Establishing SAIL will make the Division more responsive and consistent in the approach in handling spills, contaminated sites and abandoned and derelict vessels.

Continued work with DEC and Department of Law to identify a process for DNR to seek cost recovery from responsible parties in the clean-up of contaminated state-owned lands and to potentially close the site with institutional controls, including uniform environmental covenants, if the responsible party is unable to remove all of the contamination from state-owned lands, as well as long term maintenance responsibilities.

Resolved numerous trespass or unauthorized use cases, all resulting in improved access to state land, further public use and development or revenue recovery, through the three Regional Land Offices.

**Key Component Challenges**

**Acquire state land entitlement and defend and plan for use of state land**

The BLM is staffing a new navigability team, which has indicated its commitment to collaboration with the State of Alaska to quickly process the Recordable Disclaimers of Interest (RDIs) and clear title to state-owned submerged lands and to reassess previous non-navigability determinations promptly.

Defending State's ownership interests through navigability and Revised Statute 2477 (RS 2477) quiet title action (QTA) lawsuits will continue to be of critical importance.

Further, re-establishing a Memorandum Of Understanding (MOU) with BLM on the practice of land conveyance, survey, and patenting of statehood entitlement lands is a significant challenge that must be overcome.

Federal planning documents and related actions through the ANILCA program that impact the State's interest on issues affecting public enjoyment and use of adjacent federal lands, particularly issues related to access for traditional activities and subsistence, transportation corridor projects and land exchanges.

### **Ensure an adequate amount of state land is transferred into private ownership and to municipalities for settlement, recreation, development, and other uses**

The amount of land conveyed in any one year to municipalities under the Municipal Entitlement program can vary significantly since conveyance decisions are dependent on various other factors including area plan revisions, complexity of the conveyance decisions and the public review process. As previously reported, some boroughs are reaching or have reached the end of their entitlements which will continue to result in increased requests for land exchanges and public and charitable conveyances at less than fair market value or potential requests to the legislature for increased or additional entitlement acres.

Adjacent landowners and local communities are compelling the removal of certain projects, negatively impacting production of parcels to sell. In addition, there are increasing local government land use restrictions that create greater cost and challenge to offer land sales within those local communities.

### **Businesses, individuals, and other entities obtain authorizations necessary for the environmentally sound use and development of state land and resources**

- Manage increasing costs to produce land disposals due to the land ownership patterns, borough restrictions, and access development requirements. Complications that must be dealt with before land can be offered include resolving trespass structures, access issues, and removal of trash and hazardous materials.
- Manage workload from trespass issues and various litigation, which is consuming significant staff effort.
- Recruit and retain technical and professional level staff in a competitive market.
- Sufficiency of water data collected throughout the state to make effective and sound water-use decisions.
- Ensure all state regulated dams are safely constructed and operated.
- Efficiently process Reclamation and Closure Cost Estimate Proposals from large mine operations.

### **Ensure that all state land is unencumbered by unauthorized use, contamination, or waste that makes it unavailable for other public use and development**

- Ensure BLM removes contamination and trespass structures before conveying land to the state.
- Removal of large hazardous material sites and waste on state land when no remaining responsible party exists.
- Increased unauthorized use of state lands cannot be effectively addressed with current authorities and staff levels.
- Ineffective enforcement authorities prolong/prevent appropriate stewardship efforts to provide adequate stewardship on all state lands.

## **Significant Changes in Results to be Delivered in FY2022**

Improving certainty with regards to the mineral estate land tenure issues.

Increasing land sales to get Alaska Lands into Alaskans' Hands.

## **Statutory and Regulatory Authority**

Alaska Constitution Article VIII  
AS 19.30.400; AS 27; AS 29; AS 38; AS 41; AS 46  
11 AAC



**Contact Information**

**Contact:** Marty Parsons, Director, Mining, Land & Water

**Phone:** (907) 269-8600

**E-mail:** [marty.parsons@alaska.gov](mailto:marty.parsons@alaska.gov)

**Mining, Land & Water  
Personal Services Information**

Authorized Positions			Personal Services Costs	
	<u>FY2021</u> <u>Management</u> <u>Plan</u>	<u>FY2022</u> <u>Governor</u>		
Full-time	207	207	Annual Salaries	15,072,415
Part-time	0	0	COLA	138,027
Nonpermanent	3	3	Premium Pay	0
			Annual Benefits	9,231,493
			<i>Less 5.22% Vacancy Factor</i>	(1,275,635)
			Lump Sum Premium Pay	0
<b>Totals</b>	<b>210</b>	<b>210</b>	<b>Total Personal Services</b>	<b>23,166,300</b>

**Position Classification Summary**

Job Class Title	Anchorage	Fairbanks	Juneau	Others	Total
Administrative Assistant I	2	0	0	0	2
Administrative Assistant II	2	1	0	0	3
Administrative Officer I	1	0	0	0	1
Administrative Officer II	1	0	0	0	1
Admn OPS Mgr I	1	0	0	0	1
Analyst/Programmer II	1	0	0	0	1
Analyst/Programmer III	2	0	0	0	2
Appraiser II	2	0	0	0	2
Appraiser III	1	0	0	0	1
Division Director - Px	1	0	0	0	1
Division Operations Manager	2	0	0	0	2
Engineering Assistant II	3	0	0	0	3
Engineering Associate	1	0	0	0	1
Engineering Associate I, Dec	0	0	1	0	1
Geologist II	1	2	0	0	3
Geologist III	1	2	0	0	3
Geologist IV	1	1	0	0	2
Geologist V	1	1	0	0	2
Hydrologist I	1	0	0	0	1
Hydrologist II	1	1	1	0	3
Hydrologist IV	1	0	0	0	1
Land Survey Manager I	1	0	0	0	1
Land Survey Manager II	1	0	0	0	1
Land Survey Specialist I	3	0	0	0	3
Land Survey Technician	1	0	0	0	1
Land Surveyor I	5	0	0	0	5
Land Surveyor II	4	1	0	0	5
Nat Res Speciii	31	7	4	0	42
Nat Res Techiii	2	0	0	1	3
Natural Resource Manager I	8	2	2	0	12
Natural Resource Manager II	8	4	1	0	13
Natural Resource Manager III	7	1	1	0	9
Natural Resource Specialist I	13	1	0	0	14
Natural Resource Specialist II	35	12	5	0	52
Natural Resource Technician I	1	0	0	0	1
Natural Resource Technician II	6	0	1	0	7

<b>Position Classification Summary</b>					
<b>Job Class Title</b>	<b>Anchorage</b>	<b>Fairbanks</b>	<b>Juneau</b>	<b>Others</b>	<b>Total</b>
Office Assistant II	0	1	0	0	1
Program Coordinator II	1	0	0	0	1
Project Assistant	1	0	0	0	1
Tech Eng/Archii	1	0	0	0	1
<b>Totals</b>	<b>156</b>	<b>37</b>	<b>16</b>	<b>1</b>	<b>210</b>

**Component Detail All Funds**  
**Department of Natural Resources**

**Component:** Mining, Land & Water (3002)  
**RDU:** Fire Suppression, Land & Water Resources (602)

Non-Formula Component

	FY2020 Actuals	FY2021 Conference Committee	FY2021 Authorized	FY2021 Management Plan	FY2022 Governor	FY2021 Management Plan vs FY2022 Governor	
71000 Personal Services	21,926.0	23,449.2	23,597.9	23,032.9	23,166.3	133.4	0.6%
72000 Travel	144.0	416.4	416.4	416.4	416.4	0.0	0.0%
73000 Services	2,896.6	3,619.6	3,619.6	4,184.6	4,184.6	0.0	0.0%
74000 Commodities	316.3	570.7	598.7	598.7	588.7	-10.0	-1.7%
75000 Capital Outlay	28.2	0.0	0.0	0.0	0.0	0.0	0.0%
77000 Grants, Benefits	0.0	0.0	0.0	0.0	0.0	0.0	0.0%
78000 Miscellaneous	0.0	0.0	0.0	0.0	0.0	0.0	0.0%
<b>Totals</b>	<b>25,311.1</b>	<b>28,055.9</b>	<b>28,232.6</b>	<b>28,232.6</b>	<b>28,356.0</b>	<b>123.4</b>	<b>0.4%</b>
<b>Fund Sources:</b>							
1001 CBR Fund (UGF)	0.0	1,184.6	1,184.6	1,184.6	0.0	-1,184.6	-100.0%
1002 Fed Rcpts (Fed)	968.8	1,297.2	1,297.2	1,297.2	1,302.4	5.2	0.4%
1003 G/F Match (UGF)	323.2	240.0	240.0	240.0	321.6	81.6	34.0%
1004 Gen Fund (UGF)	4,212.7	3,313.9	3,313.9	3,313.9	3,896.2	582.3	17.6%
1005 GF/Prgm (DGF)	12,653.6	12,964.2	13,140.9	13,140.9	13,740.7	599.8	4.6%
1007 I/A Rcpts (Other)	297.3	487.2	487.2	487.2	488.8	1.6	0.3%
1055 IA/OIL HAZ (Other)	14.0	21.6	21.6	21.6	21.6	0.0	0.0%
1061 CIP Rcpts (Other)	56.6	343.4	343.4	343.4	344.9	1.5	0.4%
1105 PFund Rcpt (Other)	1,953.6	1,961.1	1,961.1	1,961.1	1,968.7	7.6	0.4%
1108 Stat Desig (Other)	74.6	309.8	309.8	309.8	310.2	0.4	0.1%
1153 State Land (DGF)	4,399.6	5,541.0	5,541.0	5,541.0	5,567.3	26.3	0.5%
1154 Shore Fish (DGF)	350.6	361.9	361.9	361.9	363.6	1.7	0.5%
1192 Mine Trust (Other)	6.5	30.0	30.0	30.0	30.0	0.0	0.0%
<b>Unrestricted General (UGF)</b>	<b>4,535.9</b>	<b>4,738.5</b>	<b>4,738.5</b>	<b>4,738.5</b>	<b>4,217.8</b>	<b>-520.7</b>	<b>-11.0%</b>
<b>Designated General (DGF)</b>	<b>17,403.8</b>	<b>18,867.1</b>	<b>19,043.8</b>	<b>19,043.8</b>	<b>19,671.6</b>	<b>627.8</b>	<b>3.3%</b>
<b>Other Funds</b>	<b>2,402.6</b>	<b>3,153.1</b>	<b>3,153.1</b>	<b>3,153.1</b>	<b>3,164.2</b>	<b>11.1</b>	<b>0.4%</b>
<b>Federal Funds</b>	<b>968.8</b>	<b>1,297.2</b>	<b>1,297.2</b>	<b>1,297.2</b>	<b>1,302.4</b>	<b>5.2</b>	<b>0.4%</b>
<b>Positions:</b>							
Permanent Full Time	202	205	207	207	207	0	0.0%
Permanent Part Time	0	0	0	0	0	0	0.0%
Non Permanent	3	3	3	3	3	0	0.0%

**Change Record Detail - Multiple Scenarios with Descriptions**  
**Department of Natural Resources**

**Component:** Mining, Land & Water (3002)  
**RDU:** Fire Suppression, Land & Water Resources (602)

Scenario/Change Record Title	Trans Type	Totals	Personal Services	Travel	Services	Commodities	Capital Outlay	Grants, Benefits	Miscellaneous	Positions		NP
										PFT	PPT	
***** Changes From FY2021 Conference Committee To FY2021 Authorized *****												
<b>FY2021 Mine Reclamation Activities Sec31b CH8 SLA2020 P94 L2 (HB205)</b>												
	ConfC(L)	55.0	6.0	5.0	37.0	7.0	0.0	0.0	0.0	0	0	0
1108 Stat Desig		25.0										
1192 Mine Trust		30.0										
<p>(b) The amount necessary for the purposes specified in AS 37.14.820 for the fiscal year ending June 30, 2021, estimated to be \$30,000, is appropriated from the mine reclamation trust fund operating account (AS 37.14.800(a)) to the Department of Natural Resources for those purposes for the fiscal year ending June 30, 2021.</p> <p>(c) The amount received in settlement of a claim against a bond guaranteeing the reclamation of state, federal, or private land, including the plugging or repair of a well, estimated to be \$50,000, is appropriated to the Department of Natural Resources for the purpose of reclaiming the state, federal, or private land affected by a use covered by the bond for the fiscal year ending June 30, 2021.</p>												
<b>Conference Committee</b>												
	ConfCom	28,000.9	23,443.2	411.4	3,582.6	563.7	0.0	0.0	0.0	205	0	3
1001 CBR Fund		1,184.6										
1002 Fed Rcpts		1,297.2										
1003 G/F Match		240.0										
1004 Gen Fund		3,313.9										
1005 GF/Prgm		12,964.2										
1007 I/A Rcpts		487.2										
1055 IA/OIL HAZ		21.6										
1061 CIP Rcpts		343.4										
1105 PFund Rcpt		1,961.1										
1108 Stat Desig		284.8										
1153 State Land		5,541.0										
1154 Shore Fish		361.9										
<b>Exploration &amp; Mining Rights; Annual Labor (SB155) (Sec2 Ch31 SLA2020 P43 L6 (HB205))</b>												
	FisNot	176.7	148.7	0.0	0.0	28.0	0.0	0.0	0.0	2	0	0
1005 GF/Prgm		176.7										
<p>SB 155 amends who, and which entities, may obtain and hold exploration and mining rights. It allows an unqualified person or one that may become unqualified to cure their defect in qualifications, or transfer the interest to a qualified person.</p>												
<b>Subtotal</b>		<b>28,232.6</b>	<b>23,597.9</b>	<b>416.4</b>	<b>3,619.6</b>	<b>598.7</b>	<b>0.0</b>	<b>0.0</b>	<b>0.0</b>	<b>207</b>	<b>0</b>	<b>3</b>
***** Changes From FY2021 Authorized To FY2021 Management Plan *****												
<b>Align Authority with Anticipated Expenditures</b>												
	LIT	0.0	-565.0	0.0	565.0	0.0	0.0	0.0	0.0	0	0	0

**Change Record Detail - Multiple Scenarios with Descriptions**  
**Department of Natural Resources**

**Component:** Mining, Land & Water (3002)  
**RDU:** Fire Suppression, Land & Water Resources (602)

Scenario/Change Record Title	Trans Type	Totals	Personal Services	Travel	Services	Commodities	Capital Outlay	Grants, Benefits	Miscellaneous	Positions		
										PFT	PPT	NP
Transfer authority from personal services to cover anticipated services costs. The remaining personal services authority is sufficient to cover anticipated expenditures.												
	<b>Subtotal</b>	<b>28,232.6</b>	<b>23,032.9</b>	<b>416.4</b>	<b>4,184.6</b>	<b>598.7</b>	<b>0.0</b>	<b>0.0</b>	<b>0.0</b>	<b>207</b>	<b>0</b>	<b>3</b>
***** <b>Changes From FY2021 Management Plan To FY2022 Governor</b> *****												
<b>Reverse Exploration &amp; Mining Rights; Annual Labor (SB155) (Sec2 Ch31 SLA2020 P43 L6 (HB205))</b>												
	OTI	-10.0	0.0	0.0	0.0	-10.0	0.0	0.0	0.0	0	0	0
1005 GF/Prgm		-10.0										
SB 155 amends who, and which entities, may obtain and hold exploration and mining rights. It allows an unqualified person or one that may become unqualified to cure their defect in qualifications, or transfer the interest to a qualified person.												
<b>Reverse FY2021 Mine Reclamation Activities Sec31b CH8 SLA2020 P94 L2 (HB205)</b>												
	OTI	-55.0	-6.0	-5.0	-37.0	-7.0	0.0	0.0	0.0	0	0	0
1108 Stat Desig		-25.0										
1192 Mine Trust		-30.0										
(b) The amount necessary for the purposes specified in AS 37.14.820 for the fiscal year ending June 30, 2021, estimated to be \$30,000, is appropriated from the mine reclamation trust fund operating account (AS 37.14.800(a)) to the Department of Natural Resources for those purposes for the fiscal year ending June 30, 2021.												
(c) The amount received in settlement of a claim against a bond guaranteeing the reclamation of state, federal, or private land, including the plugging or repair of a well, estimated to be \$50,000, is appropriated to the Department of Natural Resources for the purpose of reclaiming the state, federal, or private land affected by a use covered by the bond for the fiscal year ending June 30, 2021.												
<b>FY2022 Salary Adjustments</b>												
	SalAdj	133.4	133.4	0.0	0.0	0.0	0.0	0.0	0.0	0	0	0
1002 Fed Rcpts		5.2										
1003 G/F Match		1.6										
1004 Gen Fund		22.7										
1005 GF/Prgm		64.8										
1007 I/A Rcpts		1.6										
1061 CIP Rcpts		1.5										
1105 PFund Rcpt		7.6										
1108 Stat Desig		0.4										
1153 State Land		26.3										
1154 Shore Fish		1.7										

FY2022 1% COLA for ASE/General Government (GG/GP/GY/GZ): \$133.4

**Change Record Detail - Multiple Scenarios with Descriptions**  
**Department of Natural Resources**

**Component:** Mining, Land & Water (3002)  
**RDU:** Fire Suppression, Land & Water Resources (602)

Scenario/Change Record Title	Trans Type	Totals	Personal Services	Travel	Services	Commodities	Capital Outlay	Grants, Benefits	Miscellaneous	Positions		NP
										PFT	PPT	

**Restore Settlement of Claims Against Reclamation Bonds**

1108 Stat Desig	IncM	25.0	25.0	0.0	0.0	25.0	0.0	0.0	0.0	0.0	0	0	0
-----------------	------	------	------	-----	-----	------	-----	-----	-----	-----	---	---	---

Restore amount in settlement of a claim against a bond guaranteeing the reclamation of state, federal, or private land, including the plugging or repair of a well, estimated to be \$25.0 for the Division of Mining, Land and Water.

The amount received in settlement of a claim against a bond guaranteeing the reclamation of state, federal, or private land, including the plugging or repair of a well, estimated to be \$50,000, is appropriated to the Department of Natural Resources for the purpose of reclaiming the state, federal, or private land affected by a use covered by the bond for the fiscal year ending June 30, 2022.

The Division of Forestry utilizes the same language section, also with an estimated amount of \$25.0, for a total of \$50.0 referenced in the language section.

**Restore Mine Reclamation Activities**

1192 Mine Trust	IncM	30.0	30.0	6.0	5.0	12.0	7.0	0.0	0.0	0.0	0	0	0
-----------------	------	------	------	-----	-----	------	-----	-----	-----	-----	---	---	---

Restore estimate appropriated from the mine reclamation trust fund operating account (AS 37.14.800(a)) to the Division of Mining, Land & Water. This authority is used for reclamation of state land by utilizing bond funds as necessary.

Language:

The amount necessary for the purposes specified in AS 37.14.820 for the fiscal year ending June 30, 2022, estimated to be \$30,000, is appropriated from the mine reclamation trust fund operating account (AS 37.14.800(a)) to the Department of Natural Resources for those purposes for the fiscal year ending June 30, 2022.

**Fund Source Adjustment of CBRF to UGF**

1001 CBR Fund	FndChg	-1,184.6	0.0	0.0	0.0	0.0	0.0	0.0	0.0	0.0	0	0	0
1003 G/F Match		80.0											
1004 Gen Fund		1,104.6											

Replace Constitutional Budget Reserve Fund (CBRF) used as a one-time funding mechanism in FY2021.

**Fund Change for Services Provided**

1004 Gen Fund	FndChg	-545.0	0.0	0.0	0.0	0.0	0.0	0.0	0.0	0.0	0	0	0
1005 GF/Prgm		545.0											

The Division of Mining, Land and Water is a revenue producing division, generating \$15,516.6 in revenues in FY2020. With the statewide budget challenges, the division is seeking to transition costs related to the services provided by the division. In FY2021, the division currently has \$13,140.9 in designated program receipt authority. In order to be responsive to those seeking to commercially use state land which benefits the economy in the state, the division wants to shift more of its expenses to the revenue earned to better show the correlation between costs and existing revenues. With the existing level of work demand and

**Change Record Detail - Multiple Scenarios with Descriptions**  
**Department of Natural Resources**

**Component:** Mining, Land & Water (3002)  
**RDU:** Fire Suppression, Land & Water Resources (602)

Scenario/Change Record Title	Trans Type	Totals	Personal Services	Travel	Services	Commodities	Capital Outlay	Grants, Benefits	Miscellaneous	Positions		NP
										PFT	PPT	
revenues collected, as well as the fee regulation increases from FY2018, and the carry forward language that will accommodate the revenue swings, the division can confidently increase its dependence on revenues earned.												
	<b>Totals</b>	<b>28,356.0</b>	<b>23,166.3</b>	<b>416.4</b>	<b>4,184.6</b>	<b>588.7</b>	<b>0.0</b>	<b>0.0</b>	<b>0.0</b>	<b>207</b>	<b>0</b>	<b>3</b>



**Line Item Detail (1676)**  
**Department of Natural Resources**  
**Travel**

**Component:** Mining, Land & Water (3002)

Line Number	Line Name		FY2020 Actuals	FY2021 Management Plan	FY2022 Governor
2000	Travel		144.0	416.4	416.4
Object Class	Servicing Agency	Explanation	FY2020 Actuals	FY2021 Management Plan	FY2022 Governor
<b>2000 Travel Detail Totals</b>			<b>144.0</b>	<b>416.4</b>	<b>416.4</b>
2000	In-State Employee Travel	In-state transportation costs for employee travel relating to administration, conventions and meetings, boards, and commissions.	133.1	405.4	405.4
2002	Out of State Employee Travel	Out of state transportation costs for employee travel relating to administration, conventions and meetings, boards and commissions.	10.9	11.0	11.0

**Line Item Detail (1676)**  
**Department of Natural Resources**  
**Services**

**Component:** Mining, Land & Water (3002)

Line Number	Line Name		FY2020 Actuals	FY2021 Management Plan	FY2022 Governor
3000	Services		2,896.6	4,184.6	4,184.6
Object Class	Servicing Agency	Explanation	FY2020 Actuals	FY2021 Management Plan	FY2022 Governor
<b>3000 Services Detail Totals</b>			<b>2,896.6</b>	<b>4,184.6</b>	<b>4,184.6</b>
3000	Education Services	Training, educational conferences, and agency memberships.	86.2	180.0	180.0
3001	Financial Services	Miscellaneous financial charge related to air charter service.	0.3	1.0	1.0
3003	Information Technology	Software leases, licensing, and maintenance.	657.6	850.0	850.0
3004	Telecommunications	Local, long distance, and cellular telephone charges, data/network, telecommunication equipment.	41.7	65.0	65.0
3006	Delivery Services	Freight, courier services, and postage.	33.7	60.0	60.0
3007	Advertising and Promotions	Advertising, promotions, and legal notices.	43.7	65.0	65.0
3008	Utilities	Electricity, heating fuel, water, sewage, and disposal services.	33.9	60.0	60.0
3009	Structure/Infrastructure/Land	Services including surveys, real estate appraisals, janitorial services, building maintenance, and office/meeting space rentals and leases.	204.5	450.0	450.0
3010	Equipment/Machinery	Various equipment purchases and rentals/leases including copier machines for several offices, portable toilets, etc., ATV/boat repair.	81.3	255.0	255.0
3011	Other Services	State office travel fees and multiple contractual services.	28.4	65.0	65.0

**Line Item Detail (1676)**  
**Department of Natural Resources**  
**Services**

**Component:** Mining, Land & Water (3002)

Object Class		Servicing Agency	Explanation	FY2020 Actuals	FY2021 Management Plan	FY2022 Governor
<b>3000 Services Detail Totals</b>				<b>2,896.6</b>	<b>4,184.6</b>	<b>4,184.6</b>
3012	Inter-Agency Federal Indirect Rate Allocation	NatRes - Administrative Services (424)	Indirect cost allocation for services provided by Administrative Services.	162.6	185.0	185.0
3016	Inter-Agency Economic Development	E&ED - Department-wide	Reimbursable services agreement with Department of Education for copies of the Alaska Statutes.	0.0	0.0	0.0
3016	Inter-Agency Economic Development	Gov - Department-wide	Reimbursable services agreement with the Governor's Office for OMB Budget Analyst Support.	7.7	10.0	10.0
3016	Inter-Agency Economic Development	NatRes - History and Archaeology (451)	Multiple reimbursable agreements with Office of History and Archeology including archaeological survey of the Rusty Lake Trail, RS 2477 and navigability assistance research.	131.6	133.6	133.6
3016	Inter-Agency Economic Development	NatRes - Parks Management & Access (3001)	Multiple reimbursable service agreements with Parks for design and construction services and for producing a DNR Peace Officer manual.	52.6	10.0	10.0
3016	Inter-Agency Economic Development	NatRes - Public Information Center (2441)	Reimbursable services agreement for the Northern Region Public Information Center Intern for land support.	25.0	25.0	25.0
3016	Inter-Agency Economic Development	PubSaf - Department-wide	Reimbursable services agreements with Public Safety for the Knik River Public Safety Corridor.	125.0	125.0	125.0
3017	Inter-Agency Information Technology Non-Telecommunications	Admin - Department-wide	Reimbursable services agreement with DOA for Adobe and Microsoft licenses.	232.2	300.0	300.0
3018	Inter-Agency Information Technology Telecommunications	Admin - Department-wide	Reimbursable services agreement with DOA for telecommunication - phones.	99.6	150.0	150.0
3021	Inter-Agency Mail	Admin - Department-wide	Reimbursable services agreement with DOA for centralized mail	3.0	15.0	15.0

**Line Item Detail (1676)**  
**Department of Natural Resources**  
**Services**

**Component:** Mining, Land & Water (3002)

Object Class	Servicing Agency	Explanation	FY2020 Actuals	FY2021 Management Plan	FY2022 Governor	
<b>3000 Services Detail Totals</b>			<b>2,896.6</b>	<b>4,184.6</b>	<b>4,184.6</b>	
		services chargeback.				
3022	Inter-Agency Human Resources	Admin - Department-wide	Reimbursable services agreement with DOA for human resource chargeback.	36.1	50.0	45.0
3023	Inter-Agency Building Leases	Admin - Department-wide	Reimbursable services agreement with DOA for office space costs.	69.0	280.0	280.0
3024	Inter-Agency Legal	Law - Department-wide	Multiple reimbursable services agreements with Law for regulations review and litigation support.	456.4	500.0	500.0
3026	Inter-Agency Insurance	Admin - Department-wide	Reimbursable services agreement with DOA for risk management, and property insurance.	6.7	10.0	10.0
3027	Inter-Agency Financial	Admin - Department-wide	Reimbursable services agreement with DOA for state payroll (HRM) and accounting (IRIS & ALDER) systems chargeback.	168.9	185.0	190.0
3028	Inter-Agency Americans with Disabilities Act Compliance	Admin - Department-wide	Reimbursable services agreement with DOA for the Americans with Disabilities Act (ADA) chargeback.	2.0	5.0	5.0
3031	Inter-Agency Construction	Trans - Department-wide	Reimbursable services agreement with DOT for the Airport Way office facilities services.	12.1	0.0	0.0
3037	State Equipment Fleet	Trans - Department-wide	State equipment fleet vehicle usage.	94.8	150.0	150.0

**Line Item Detail (1676)**  
**Department of Natural Resources**  
**Commodities**

**Component:** Mining, Land & Water (3002)

Line Number	Line Name		FY2020 Actuals	FY2021 Management Plan	FY2022 Governor
4000	Commodities		316.3	598.7	588.7
Object Class	Servicing Agency	Explanation	FY2020 Actuals	FY2021 Management Plan	FY2022 Governor
<b>4000 Commodities Detail Totals</b>			<b>316.3</b>	<b>598.7</b>	<b>588.7</b>
4000	Business	Regular business supplies, IT equipment.	157.3	385.0	375.0
4000	Business	Business supplies - COVID related.	134.8	138.0	138.0
4002	Household/Institutional	Cleaning, food, and other supplies.	9.5	25.0	25.0
4004	Safety	Firearms, ammo, safety gear.	4.9	5.0	5.0
4006	Signs and Markers	Signs and markers.	0.2	3.0	3.0
4013	Lube Oils/Grease/Solvents	Solvents.	0.4	0.5	0.5
4015	Parts and Supplies	Parts and supplies.	3.4	15.0	15.0
4019	Small Tools/Minor Equipment	Small tools/equipment.	5.1	25.2	25.2
4020	Equipment Fuel	Fuel.	0.7	2.0	2.0

**Line Item Detail (1676)**  
**Department of Natural Resources**  
**Capital Outlay**

**Component:** Mining, Land & Water (3002)

Line Number	Line Name		FY2020 Actuals	FY2021 Management Plan	FY2022 Governor
5000	Capital Outlay		28.2	0.0	0.0
Object Class	Servicing Agency	Explanation	FY2020 Actuals	FY2021 Management Plan	FY2022 Governor
<b>5000 Capital Outlay Detail Totals</b>			<b>28.2</b>	<b>0.0</b>	<b>0.0</b>
5002	Structures and Infrastructure	Knik River Public Access Corridor storage/building improvements.	11.5	0.0	0.0
5004	Equipment	Small equipment purchases.	16.7	0.0	0.0

**Revenue Detail (1681)**  
**Department of Natural Resources**

**Component:** Mining, Land & Water (3002)

Revenue Type (OMB Fund Code) Revenue Source	Component	Comment	FY2020 Actuals	FY2021 Management Plan	FY2022 Governor
<b>5002 Fed Rcpts (1002 Fed Rcpts)</b>			<b>968.8</b>	<b>1,297.2</b>	<b>1,302.4</b>
5010 Federal Natural Resources - Miscellaneous Grants		Federal grant reimbursement.	968.8	1,297.2	1,302.4
<b>5005 GF/Prgm (1005 GF/Prgm)</b>			<b>12,653.6</b>	<b>13,140.9</b>	<b>13,740.7</b>
5106 Program Receipts Charges for Services - Rent and Royalties		Rent and royalties.	6,241.3	5,200.0	5,799.8
5113 Program Receipts Natural Resources - Rent and Royalties		Water management, permits, material sales, and leases.	5,964.4	7,600.9	7,600.9
5114 Program Receipts Natural Resources - Other Revenue		Other revenue related to water management, permits, material sales, and leases.	447.9	340.0	340.0
<b>5007 I/A Rcpts (1007 I/A Rcpts)</b>			<b>297.3</b>	<b>487.2</b>	<b>488.8</b>
5301 Inter-Agency Receipts	Commerce - Department-wide	Reimbursable services agreements with Department of Commerce for the Pad Lease 38.05.070 and Renewable Energy Fund review.	1.2	35.1	35.1
5301 Inter-Agency Receipts	Correct - Department-wide	Reimbursable services agreement with Department of Corrections for a lease renewal survey at Palmer Correctional Center.	0.0	20.0	20.0
5301 Inter-Agency Receipts	FishGm - Department-wide	Reimbursable services agreements with Department of Fish and Game for Instream Flow applications, Creamers Field Land Acquisition, Fox River Flats Access and Cottonwood Creek Access.	73.4	40.4	42.0
5301 Inter-Agency Receipts	NatRes - Agricultural Development (455)	Reimbursable services agreements with Agricultural Development for firearms safety training and survey, title, and land conveyance support.	3.0	63.2	63.2
5301 Inter-Agency Receipts	NatRes - Fire Suppression Preparedness (2705)	Reimbursable services agreement with Fire Suppression Preparedness for Fairbanks employee support.	5.2	11.0	11.0

**Revenue Detail (1681)**  
**Department of Natural Resources**

**Component:** Mining, Land & Water (3002)

<b>Revenue Type (OMB Fund Code)</b> <b>Revenue Source</b>	<b>Component</b>	<b>Comment</b>	<b>FY2020 Actuals</b>	<b>FY2021 Management Plan</b>	<b>FY2022 Governor</b>
5301 Inter-Agency Receipts	NatRes - Geological & Geophysical Surveys (1031)	Reimbursable services agreement with Geological & Geophysical Surveys for the Homer LiDar and earthquake response.	5.1	17.7	17.7
5301 Inter-Agency Receipts	NatRes - Mental Health Lands Admin (1635)	Reimbursable services agreements with Mental Health for USFS Land Exchange title work, land management support surveys, and other title reports.	46.3	55.0	55.0
5301 Inter-Agency Receipts	NatRes - Oil & Gas (439)	Reimbursable services agreements with Oil & Gas for realty services and survey support.	42.0	50.3	50.3
5301 Inter-Agency Receipts	NatRes - Parks Management & Access (3001)	Reimbursable services agreement with Parks Management for development of the Old Kasilof Landing site.	10.1	10.1	10.1
5301 Inter-Agency Receipts	NatRes - Project Management & Permitting (2733)	Reimbursable services agreements with Project Management & Permitting for the projects including but not limited to Ambler Road, Red Dog, Pogo, Nanushuk Development, Donlin Gold, Greens Creek and Fort Knox.	88.7	142.9	142.9
5301 Inter-Agency Receipts	NatRes - Trustee Council Projects (1199)	Reimbursable services agreement for EVOS support.	9.1	16.5	16.5
5301 Inter-Agency Receipts	Trans - Department-wide	Reimbursable services agreement with Department of Transportation for Seward Highway MP 105-107 Windy Corner PJ.	13.2	25.0	25.0
<b>5055 IA/OIL HAZ (1055 IA/OIL HAZ)</b>			<b>14.0</b>	<b>21.6</b>	<b>21.6</b>
5391 Oil and Hazardous Waste Inter-Agency		Oil and Hazardous Waste response.	14.0	21.6	21.6
<b>5061 CIP Rcpts (1061 CIP Rcpts)</b>			<b>56.6</b>	<b>343.4</b>	<b>344.9</b>
5351 Capital Improvement Project Inter-Agency		Capital improvement project receipts for work in direct support of	56.6	343.4	344.9



**Revenue Detail (1681)**  
**Department of Natural Resources**

**Component:** Mining, Land & Water (3002)

Revenue Type (OMB Fund Code) Revenue Source	Component	Comment	FY2020 Actuals	FY2021 Management Plan	FY2022 Governor
		capital projects.			
<b>5105 PFund Rcpt (1105 PFund Rcpt)</b>			<b>1,953.6</b>	<b>1,961.1</b>	<b>1,968.7</b>
5414 Alaska Permanent Fund Corporation Receipts		Land sales fund.	1,953.6	1,961.1	1,968.7
<b>5108 Stat Desig (1108 Stat Desig)</b>			<b>74.6</b>	<b>309.8</b>	<b>310.2</b>
5206 Statutory Designated Program Receipts - Contracts		Reimbursement for dam safety and construction support.	74.6	309.8	310.2
<b>5154 Shore Fish (1154 Shore Fish)</b>			<b>350.6</b>	<b>361.9</b>	<b>363.6</b>
5403 Shore Fisheries Development Lease Program		Permits and leases for shore fishing.	350.6	361.9	363.6
<b>6004 Gen Fund (1004 Gen Fund)</b>			<b>0.4</b>	<b>0.0</b>	<b>0.0</b>
6046 General Fund - Prior Year Reimbursement Recovery		Prior year reimbursement recovery.	0.4	0.0	0.0
<b>6153 State Land (1153 State Land)</b>			<b>4,399.6</b>	<b>5,541.0</b>	<b>5,567.3</b>
6778 State Land Disposal Income Fund - Transfers In Other Funds		Land disposal income fund.	4,399.6	5,541.0	5,567.3
<b>6192 Mine Trust (1192 Mine Trust)</b>			<b>6.5</b>	<b>30.0</b>	<b>30.0</b>
6271 Mine Reclamation Trust Fund - Miscellaneous		Mine reclamation trust fund receipts.	6.5	30.0	30.0

**Inter-Agency Services (1682)**  
**Department of Natural Resources**

**Component:** Mining, Land & Water (3002)

				FY2020 Actuals	FY2021 Management Plan	FY2022 Governor
<b>Component Totals</b>				<b>1,685.3</b>	<b>2,133.6</b>	<b>2,133.6</b>
With Department of Natural Resources				371.8	353.6	353.6
With Office of the Governor				7.7	10.0	10.0
With Department of Public Safety				125.0	125.0	125.0
With Department of Administration				617.5	995.0	995.0
With Department of Law				456.4	500.0	500.0
With Department of Transportation/Public Facilities				106.9	150.0	150.0
<b>Object Class</b>	<b>Servicing Agency</b>	<b>Explanation</b>		FY2020 Actuals	FY2021 Management Plan	FY2022 Governor
3012	Inter-Agency Federal Indirect Rate Allocation	NatRes - Administrative Services (424)	Indirect cost allocation for services provided by Administrative Services.	162.6	185.0	185.0
3016	Inter-Agency Economic Development	Gov - Department-wide	Reimbursable services agreement with the Governor's Office for OMB Budget Analyst Support.	7.7	10.0	10.0
3016	Inter-Agency Economic Development	NatRes - History and Archaeology (451)	Multiple reimbursable agreements with Office of History and Archeology including archaeological survey of the Rusty Lake Trail, RS 2477 and navigability assistance research.	131.6	133.6	133.6
3016	Inter-Agency Economic Development	NatRes - Parks Management & Access (3001)	Multiple reimbursable service agreements with Parks for design and construction services and for producing a DNR Peace Officer manual.	52.6	10.0	10.0
3016	Inter-Agency Economic Development	NatRes - Public Information Center (2441)	Reimbursable services agreement for the Northern Region Public Information Center Intern for land support.	25.0	25.0	25.0
3016	Inter-Agency Economic Development	PubSaf - Department-wide	Reimbursable services agreements with Public Safety for the Knik River Public Safety Corridor.	125.0	125.0	125.0
3017	Inter-Agency Information Technology	Admin - Department-wide	Reimbursable services agreement	232.2	300.0	300.0
FY2022 Governor Department of Natural Resources				Released December 15, 2020 Page 26		

**Inter-Agency Services (1682)**  
**Department of Natural Resources**

**Component:** Mining, Land & Water (3002)

<b>Object Class</b>	<b>Servicing Agency</b>	<b>Explanation</b>	<b>FY2020 Actuals</b>	<b>FY2021 Management Plan</b>	<b>FY2022 Governor</b>
Non-Telecommunications		with DOA for Adobe and Microsoft licenses.			
3018 Inter-Agency Information Technology Telecommunications	Admin - Department-wide	Reimbursable services agreement with DOA for telecommunication - phones.	99.6	150.0	150.0
3021 Inter-Agency Mail	Admin - Department-wide	Reimbursable services agreement with DOA for centralized mail services chargeback.	3.0	15.0	15.0
3022 Inter-Agency Human Resources	Admin - Department-wide	Reimbursable services agreement with DOA for human resource chargeback.	36.1	50.0	45.0
3023 Inter-Agency Building Leases	Admin - Department-wide	Reimbursable services agreement with DOA for office space costs.	69.0	280.0	280.0
3024 Inter-Agency Legal	Law - Department-wide	Multiple reimbursable services agreements with Law for regulations review and litigation support.	456.4	500.0	500.0
3026 Inter-Agency Insurance	Admin - Department-wide	Reimbursable services agreement with DOA for risk management, and property insurance.	6.7	10.0	10.0
3027 Inter-Agency Financial	Admin - Department-wide	Reimbursable services agreement with DOA for state payroll (HRM) and accounting (IRIS & ALDER) systems chargeback.	168.9	185.0	190.0
3028 Inter-Agency Americans with Disabilities Act Compliance	Admin - Department-wide	Reimbursable services agreement with DOA for the Americans with Disabilities Act (ADA) chargeback.	2.0	5.0	5.0
3031 Inter-Agency Construction	Trans - Department-wide	Reimbursable services agreement with DOT for the Airport Way office facilities services.	12.1	0.0	0.0
3037 State Equipment Fleet	Trans - Department-wide	State equipment fleet vehicle usage.	94.8	150.0	150.0

**Personal Services Expenditure Detail**  
**Department of Natural Resources**

**Scenario:** FY2022 Governor (17280)  
**Component:** Mining, Land & Water (3002)  
**RDU:** Fire Suppression, Land & Water Resources (602)

PCN	Job Class Title	Time Status	Retire Code	Barg Unit	Location	Salary Sched	Range / Step	Comp Months	Split / Count	Annual Salaries	COLA	Premium Pay	Annual Benefits	Total Costs	UGF Amount
10-0121	Natural Resource Specialist II	FT	A	GP	Anchorage	200	16B / C	12.0		53,775	728	0	37,816	92,319	0
10-0242	Natural Resource Specialist II	FT	A	GP	Anchorage	200	16E / F	12.0		60,605	820	0	40,232	101,657	0
10-0285	Project Assistant	FT	A	GP	Anchorage	200	16J	12.0		66,534	901	0	42,330	109,765	109,765
10-0344	Analyst/Programmer III	FT	A	GP	Anchorage	200	18E / F	12.0		68,481	927	0	43,019	112,427	0
10-1005	Appraiser III	FT	A	SS	Anchorage	99	21O / P	12.0		107,005	0	0	56,689	163,694	0
10-1011	Natural Resource Manager I	FT	A	SS	Anchorage	99	18M	12.0		80,160	0	0	47,191	127,351	0
10-1017	Natural Resource Specialist II	FT	A	GP	Juneau	205	16B / C	12.0		57,905	784	0	39,277	97,966	0
10-1052	Natural Resource Manager III	FT	A	SS	Juneau	205	22D / E	12.0		97,413	0	0	53,295	150,708	0
10-1065	Admn OPS Mgr I	FT	A	SS	Anchorage	200	22J / K	12.0		104,263	0	0	55,719	159,982	0
10-1077	Natural Resource Specialist II	FT	A	GP	Anchorage	200	16G / J	12.0		65,429	886	0	41,939	108,254	0
10-1091	Natural Resource Specialist I	FT	A	GP	Anchorage	200	14B / C	12.0		47,795	647	0	35,700	84,142	84,142
10-1097	Natural Resource Manager I	FT	A	SS	Anchorage	200	18F	12.0		75,670	0	0	45,602	121,272	0
10-1110	Natural Resource Manager III	FT	A	SS	Fairbanks	203	22L / M	12.0		114,331	0	0	59,281	173,612	0
10-1131	Natural Resource Specialist II	FT	A	GP	Anchorage	200	16F / G	12.0		62,908	852	0	41,047	104,807	0
10-1133	Nat Res Speciii	FT	A	GP	Anchorage	200	18C / D	12.0		64,249	870	0	41,522	106,641	0
10-1145	Natural Resource Specialist I	FT	A	GP	Anchorage	200	14B / C	12.0		48,185	652	0	35,838	84,675	0
10-1149	Natural Resource Manager III	FT	A	SS	Anchorage	200	22C / D	12.0		89,005	0	0	50,320	139,325	9,892
10-1157	Appraiser II	FT	A	GP	Anchorage	200	18L / M	12.0		83,494	1,130	0	48,331	132,955	0
10-1168	Nat Res Speciii	FT	A	GP	Fairbanks	203	18G / J	12.0		76,652	1,038	0	45,910	123,600	0
10-1193	Nat Res Speciii	FT	A	GP	Anchorage	200	18E / F	12.0		69,748	944	0	43,467	114,159	0
10-1213	Natural Resource Manager II	FT	A	SS	Fairbanks	203	20K / L	12.0		95,148	0	0	52,494	147,642	0
10-1233	Nat Res Speciii	FT	A	GP	Juneau	205	18D / E	12.0		69,956	947	0	43,541	114,444	0
10-1235	Natural Resource Manager II	FT	A	SS	Fairbanks	203	20J / K	12.0		92,394	0	0	51,519	143,913	0
10-1241	Administrative Assistant I	FT	A	GP	Anchorage	200	12B / C	12.0		41,441	561	0	33,452	75,454	0
10-1243	Nat Res Speciii	FT	A	GP	Juneau	205	18F / G	12.0		75,719	1,025	0	45,580	122,324	0
10-1251	Natural Resource Specialist I	FT	A	GP	Anchorage	200	14B / C	12.0		47,405	642	0	35,562	83,609	0

Note: If a position is split, an asterisk (\*) will appear in the Split/Count column. If the split position is also counted in the component, two asterisks (\*\*) will appear in this column. [No valid job title] appearing in the Job Class Title indicates that the PCN has an invalid class code or invalid range for the class code effective date of this scenario.

**Personal Services Expenditure Detail**  
**Department of Natural Resources**

**Scenario:** FY2022 Governor (17280)  
**Component:** Mining, Land & Water (3002)  
**RDU:** Fire Suppression, Land & Water Resources (602)

PCN	Job Class Title	Time Status	Retire Code	Barg Unit	Location	Salary Sched	Range / Step	Comp Months	Split / Count	Annual Salaries	COLA	Premium Pay	Annual Benefits	Total Costs	UGF Amount
10-1264	Natural Resource Technician II	FT	A	GP	Juneau	205	12G / J	12.0		52,658	713	0	37,421	90,792	0
10-1272	Natural Resource Specialist I	FT	A	GP	Anchorage	200	14B / C	12.0		46,820	634	0	35,355	82,809	0
10-1273	Natural Resource Specialist I	FT	A	GP	Anchorage	200	14E / F	12.0		52,336	709	0	37,307	90,352	0
10-1274	Natural Resource Manager II	FT	A	SS	Anchorage	200	20B / C	12.0		77,321	0	0	46,186	123,507	0
10-1276	Natural Resource Technician II	FT	A	GP	Anchorage	200	12B / C	12.0		41,839	566	0	33,593	75,998	0
10-1280	Natural Resource Manager II	FT	A	SS	Fairbanks	203	20K / L	12.0		95,277	0	0	52,539	147,816	0
10-1283	Natural Resource Specialist II	FT	A	GP	Anchorage	200	16B / C	12.0		54,498	738	0	38,072	93,308	0
10-1289	Office Assistant II	FT	A	GP	Fairbanks	203	10L	12.0		48,302	654	0	35,880	84,836	84,836
10-1315	Natural Resource Manager III	FT	A	SS	Anchorage	200	22B / C	12.0		88,715	0	0	50,218	138,933	0
10-1318	Nat Res Speciii	FT	A	GP	Juneau	205	18C	12.0		67,080	908	0	42,523	110,511	0
10-1320	Natural Resource Technician I	FT	A	GP	Anchorage	200	10B / C	12.0		37,460	507	0	32,044	70,011	0
10-1329	Natural Resource Manager I	FT	A	SS	Fairbanks	99	18M / N	12.0		89,882	0	0	50,631	140,513	0
10-1334	Natural Resource Technician II	FT	A	GP	Anchorage	200	12B / C	12.0		42,066	569	0	33,673	76,308	0
10-1346	Natural Resource Specialist II	FT	A	GP	Anchorage	200	16C / D	12.0		55,526	752	0	38,435	94,713	0
10-1347	Nat Res Speciii	FT	A	GP	Fairbanks	203	18E / F	12.0		72,603	983	0	44,477	118,063	0
10-1348	Natural Resource Specialist II	FT	A	GP	Anchorage	200	16B / C	12.0		55,005	745	0	38,251	94,001	0
10-1362	Natural Resource Specialist I	FT	A	GP	Anchorage	200	14B / C	12.0		46,820	634	0	35,355	82,809	0
10-1369	Natural Resource Specialist II	FT	A	GP	Juneau	205	16B / C	12.0		57,905	784	0	39,277	97,966	0
10-1375	Natural Resource Manager II	FT	A	SS	Anchorage	200	20B / C	12.0		77,418	0	0	46,221	123,639	0
10-1380	Natural Resource Specialist II	FT	A	GP	Anchorage	200	16D / E	12.0		57,613	780	0	39,174	97,567	97,567
10-1384	Natural Resource Specialist II	FT	A	GP	Fairbanks	203	16G	12.0		65,793	891	0	42,068	108,752	0
10-1388	Natural Resource Specialist	FT	A	GP	Anchorage	200	16K	12.0		68,699	930	0	43,096	112,725	0

Note: If a position is split, an asterisk (\*) will appear in the Split/Count column. If the split position is also counted in the component, two asterisks (\*\*) will appear in this column. [No valid job title] appearing in the Job Class Title indicates that the PCN has an invalid class code or invalid range for the class code effective date of this scenario.

**Personal Services Expenditure Detail**  
**Department of Natural Resources**

**Scenario:** FY2022 Governor (17280)  
**Component:** Mining, Land & Water (3002)  
**RDU:** Fire Suppression, Land & Water Resources (602)

PCN	Job Class Title	Time Status	Retire Code	Barg Unit	Location	Salary Sched	Range / Step	Comp Months	Split / Count	Annual Salaries	COLA	Premium Pay	Annual Benefits	Total Costs	UGF Amount
10-1391	Administrative Assistant II	FT	A	GP	Fairbanks	203	14M / N	12.0		66,367	898	0	42,271	109,536	0
10-1472	Division Operations Manager	FT	A	SS	Anchorage	200	24F	12.0		112,986	0	0	58,805	171,791	0
10-1530	Natural Resource Specialist II	FT	A	GP	Fairbanks	203	16C / D	12.0		57,998	785	0	39,310	98,093	0
10-1568	Natural Resource Manager II	FT	A	SS	Anchorage	200	20E / F	12.0		83,691	0	0	48,440	132,131	0
10-1570	Nat Res Speciii	FT	A	GP	Anchorage	200	18L / M	12.0		83,384	1,129	0	48,292	132,805	0
10-1574	Natural Resource Manager III	FT	A	SS	Anchorage	200	22E / F	12.0		95,711	0	0	52,693	148,404	0
10-1582	Nat Res Speciii	FT	A	GP	Fairbanks	203	18F / G	12.0		74,560	1,009	0	45,170	120,739	0
10-1590	Natural Resource Specialist II	FT	A	GP	Anchorage	200	16D / E	12.0		58,841	797	0	39,608	99,246	0
10-1593	Natural Resource Specialist II	FT	A	GP	Fairbanks	203	16D / E	12.0		60,253	816	0	40,108	101,177	0
10-1594	Geologist III	FT	A	GP	Fairbanks	203	19K	12.0		86,405	1,170	0	49,360	136,935	0
10-1604	Natural Resource Technician II	FT	A	GG	Anchorage	99	12N / O	12.0		57,268	775	0	39,052	97,095	0
10-1609	Natural Resource Manager I	FT	A	SS	Juneau	99	18L	12.0		81,139	0	0	47,537	128,676	0
10-1634	Natural Resource Specialist I	FT	A	GP	Anchorage	200	14B / C	12.0		48,185	652	0	35,838	84,675	0
10-1635	Natural Resource Specialist I	FT	A	GP	Fairbanks	203	14F / G	12.0		56,505	765	0	38,782	96,052	0
10-1665	Natural Resource Specialist II	FT	A	GP	Anchorage	200	16L / M	12.0		72,168	977	0	44,323	117,468	0
10-1669	Natural Resource Specialist II	FT	A	GP	Juneau	205	16B / C	12.0		58,208	788	0	39,384	98,380	0
10-1671	Natural Resource Specialist II	FT	A	GP	Anchorage	200	16L	12.0		70,922	960	0	43,883	115,765	0
10-1674	Nat Res Speciii	FT	A	GP	Juneau	205	18C / D	12.0		68,902	933	0	43,168	113,003	0
10-1675	Natural Resource Manager I	FT	A	SS	Fairbanks	203	18F / J	12.0		82,326	0	0	47,957	130,283	0
10-1677	Natural Resource Manager II	FT	A	SS	Anchorage	200	20B / C	12.0		78,000	0	0	46,427	124,427	0
10-1679	Tech Eng/Archii	FT	A	GP	Anchorage	99	25P	12.0		138,402	1,874	0	67,757	208,033	0
10-1690	Natural Resource Manager I	FT	A	SS	Anchorage	200	18B / C	12.0		67,756	0	0	42,802	110,558	0
10-1692	Nat Res Speciii	FT	A	GP	Anchorage	200	18K / L	12.0		79,378	1,075	0	46,874	127,327	0
10-1696	Natural Resource Manager I	FT	A	SS	Juneau	205	18K	12.0		84,698	0	0	48,796	133,494	0
10-1700	Natural Resource Manager	FT	A	SS	Anchorage	200	20J	12.0		89,211	0	0	50,393	139,604	0

Note: If a position is split, an asterisk (\*) will appear in the Split/Count column. If the split position is also counted in the component, two asterisks (\*\*) will appear in this column. [No valid job title] appearing in the Job Class Title indicates that the PCN has an invalid class code or invalid range for the class code effective date of this scenario.

**Personal Services Expenditure Detail**  
**Department of Natural Resources**

**Scenario:** FY2022 Governor (17280)  
**Component:** Mining, Land & Water (3002)  
**RDU:** Fire Suppression, Land & Water Resources (602)

PCN	Job Class Title	Time Status	Retire Code	Barg Unit	Location	Salary Sched	Range / Step	Comp Months	Split / Count	Annual Salaries	COLA	Premium Pay	Annual Benefits	Total Costs	UGF Amount
10-1701	II Nat Res Speciii	FT	A	GP	Anchorage	200	18D	12.0		66,086	895	0	42,172	109,153	0
10-1705	Natural Resource Specialist	FT	A	GP	Anchorage	200	16B / C	12.0		55,439	751	0	38,405	94,595	0
10-1707	II Program Coordinator II	FT	A	SS	Anchorage	200	20B / C	12.0		78,000	0	0	46,427	124,427	0
10-1712	Division Operations Manager	FT	A	SS	Anchorage	200	24C / D	12.0		103,230	0	0	55,353	158,583	0
10-1713	Natural Resource Specialist	FT	A	GP	Anchorage	200	16G	12.0		63,882	865	0	41,392	106,139	0
10-1714	II Natural Resource Manager	FT	A	SS	Anchorage	200	22D / E	12.0		92,520	0	0	51,564	144,084	0
10-1718	III Nat Res Techiii	FT	A	GP	Anchorage	200	14M	12.0		63,570	861	0	41,281	105,712	0
10-1725	Nat Res Speciii	FT	A	GP	Anchorage	200	18K / L	12.0		80,017	1,083	0	47,100	128,200	64,100
10-1726	Natural Resource Specialist	FT	A	GP	Fairbanks	203	16K	12.0		70,766	958	0	43,827	115,551	0
10-1732	II Natural Resource Specialist	FT	A	GP	Anchorage	200	16C	12.0		55,439	751	0	38,405	94,595	0
10-1744	II Natural Resource Manager I	FT	A	SS	Anchorage	200	18C / D	12.0		69,703	0	0	43,491	113,194	0
10-1745	Natural Resource Specialist	FT	A	GP	Anchorage	200	16L	12.0		70,922	960	0	43,883	115,765	0
10-1746	II Natural Resource Technician II	FT	A	GP	Anchorage	200	12C / D	12.0		42,825	580	0	33,942	77,347	0
10-1747	Nat Res Speciii	FT	A	GP	Anchorage	200	18G / J	12.0		76,050	1,030	0	45,697	122,777	0
10-1749	Nat Res Speciii	FT	A	GP	Anchorage	200	18P	12.0		92,157	1,248	0	51,395	144,800	0
10-1750	Natural Resource Specialist	FT	A	GP	Anchorage	200	14B / C	12.0		47,665	645	0	35,654	83,964	0
10-1753	I Natural Resource Specialist	FT	A	GP	Juneau	205	16C	12.0		58,208	788	0	39,384	98,380	0
10-1757	II Natural Resource Specialist	FT	A	GP	Anchorage	200	16B / C	12.0		55,236	748	0	38,333	94,317	94,317
10-1763	II Natural Resource Manager	FT	A	SS	Anchorage	200	20F	12.0		86,403	0	0	49,400	135,803	0
10-1765	II Natural Resource Specialist	FT	A	GP	Anchorage	200	14C / D	12.0		48,259	653	0	35,864	84,776	84,776
10-1767	I Administrative Officer II	FT	A	SS	Anchorage	200	19B / C	12.0		72,883	0	0	44,616	117,499	0
10-1769	Nat Res Speciii	FT	A	GP	Anchorage	200	18L / M	12.0		83,384	1,129	0	48,292	132,805	0
10-1770	Nat Res Speciii	FT	A	GP	Anchorage	200	18J / K	12.0		76,669	1,038	0	45,916	123,623	123,623
10-1771	Natural Resource Specialist	FT	A	GP	Anchorage	200	16A / B	12.0		53,703	727	0	37,790	92,220	0
	II														

Note: If a position is split, an asterisk (\*) will appear in the Split/Count column. If the split position is also counted in the component, two asterisks (\*\*) will appear in this column.  
 [No valid job title] appearing in the Job Class Title indicates that the PCN has an invalid class code or invalid range for the class code effective date of this scenario.

**Personal Services Expenditure Detail**  
**Department of Natural Resources**

**Scenario:** FY2022 Governor (17280)  
**Component:** Mining, Land & Water (3002)  
**RDU:** Fire Suppression, Land & Water Resources (602)

PCN	Job Class Title	Time Status	Retire Code	Barg Unit	Location	Salary Sched	Range / Step	Comp Months	Split / Count	Annual Salaries	COLA	Premium Pay	Annual Benefits	Total Costs	UGF Amount
10-1778	Land Survey Technician	FT	A	GP	Anchorage	200	14J	12.0		57,759	782	0	39,225	97,766	0
10-1780	Land Surveyor II	FT	A	SS	Anchorage	99	22M / N	12.0		105,851	0	0	56,280	162,131	0
10-1781	Land Survey Specialist I	FT	A	GP	Anchorage	200	18K / L	12.0		78,633	1,065	0	46,611	126,309	0
10-1784	Land Survey Manager I	FT	A	SS	Anchorage	200	23D / E	12.0		99,893	0	0	54,172	154,065	0
10-1786	Land Surveyor I	FT	A	GP	Anchorage	200	21L	12.0		99,177	1,343	0	53,879	154,399	0
10-1788	Land Survey Specialist I	FT	A	GP	Anchorage	200	18G	12.0		73,047	989	0	44,634	118,670	0
10-1789	Land Survey Manager II	FT	A	SS	Anchorage	200	24K / L	12.0		123,386	0	0	62,484	185,870	0
10-1793	Natural Resource Specialist II	FT	A	GP	Anchorage	200	16B / C	12.0		54,209	734	0	37,969	92,912	0
10-1794	Natural Resource Manager II	FT	A	SS	Anchorage	200	20F	12.0		86,403	0	0	49,400	135,803	0
10-1796	Natural Resource Specialist II	FT	A	GP	Fairbanks	203	16F / G	12.0		64,610	875	0	41,649	107,134	0
10-1797	Natural Resource Specialist II	FT	A	GP	Fairbanks	203	16B / C	12.0		56,135	760	0	38,651	95,546	0
10-1798	Natural Resource Manager III	FT	A	SS	Anchorage	200	22J / K	12.0		102,058	0	0	54,938	156,996	0
10-1806	Nat Res Speciii	FT	A	GP	Anchorage	200	18F / G	12.0		71,085	962	0	43,940	115,987	115,987
10-1807	Natural Resource Specialist II	FT	A	GP	Anchorage	200	16C / D	12.0		56,204	761	0	38,675	95,640	0
10-1809	Nat Res Speciii	FT	A	GP	Fairbanks	203	18B / C	12.0		65,247	883	0	41,875	108,005	108,005
10-1812	Analyst/Programmer III	FT	A	GP	Anchorage	200	18C / D	12.0		65,535	887	0	41,977	108,399	108,399
10-1815	Natural Resource Specialist I	FT	A	GP	Anchorage	200	14B / C	12.0		47,600	644	0	35,631	83,875	0
10-1816	Natural Resource Specialist II	FT	A	GP	Anchorage	200	16B / C	12.0		53,920	730	0	37,867	92,517	0
10-1817	Nat Res Speciii	FT	A	GP	Anchorage	200	18G / J	12.0		74,674	1,011	0	45,210	120,895	0
10-1820	Natural Resource Technician II	FT	A	GP	Anchorage	200	12E / F	12.0		46,368	628	0	35,195	82,191	82,191
10-1821	Nat Res Speciii	FT	A	GP	Anchorage	200	18M / N	12.0		86,216	1,167	0	49,294	136,677	0
10-1822	Natural Resource Specialist II	FT	A	GP	Anchorage	200	16B / C	12.0		54,947	744	0	38,231	93,922	0
10-1823	Natural Resource Manager I	FT	A	SS	Anchorage	200	18B / C	12.0		68,307	0	0	42,997	111,304	0
10-1824	Natural Resource Specialist II	FT	A	GP	Juneau	205	16J	12.0		69,869	946	0	43,510	114,325	0
10-1825	Nat Res Speciii	FT	A	GP	Fairbanks	203	18G / J	12.0		77,169	1,045	0	46,093	124,307	0
10-1826	Natural Resource Specialist II	FT	A	GP	Anchorage	200	16J / K	12.0		67,977	920	0	42,841	111,738	0
10-1827	Nat Res Speciii	FT	A	GP	Anchorage	200	18L	12.0		81,081	1,098	0	47,477	129,656	0

Note: If a position is split, an asterisk (\*) will appear in the Split/Count column. If the split position is also counted in the component, two asterisks (\*\*) will appear in this column. [No valid job title] appearing in the Job Class Title indicates that the PCN has an invalid class code or invalid range for the class code effective date of this scenario.



**Personal Services Expenditure Detail**  
**Department of Natural Resources**

**Scenario:** FY2022 Governor (17280)  
**Component:** Mining, Land & Water (3002)  
**RDU:** Fire Suppression, Land & Water Resources (602)

PCN	Job Class Title	Time Status	Retire Code	Barg Unit	Location	Salary Sched	Range / Step	Comp Months	Split / Count	Annual Salaries	COLA	Premium Pay	Annual Benefits	Total Costs	UGF Amount
10-1828	Natural Resource Manager III	FT	A	SS	Anchorage	200	22D / E	12.0		93,274	0	0	51,831	145,105	0
10-1829	Nat Res Speciii	FT	A	GP	Fairbanks	203	18C / D	12.0		67,029	907	0	42,505	110,441	110,441
10-1830	Land Surveyor I	FT	A	GG	Anchorage	99	21N / O	12.0		100,170	1,356	0	54,230	155,756	0
10-1833	Natural Resource Manager I	FT	A	SS	Anchorage	200	18B / C	12.0		67,848	0	0	42,835	110,683	0
10-1834	Nat Res Speciii	FT	A	GP	Anchorage	200	18M	12.0		83,714	1,133	0	48,408	133,255	0
10-1835	Land Surveyor II	FT	A	SS	Anchorage	200	22B / C	12.0		87,944	0	0	49,945	137,889	0
10-1836	Natural Resource Specialist II	FT	A	GP	Anchorage	200	16B / C	12.0		55,077	746	0	38,277	94,100	0
10-1837	Nat Res Speciii	FT	A	GP	Anchorage	200	18G / J	12.0		75,049	1,016	0	45,343	121,408	0
10-1839	Nat Res Speciii	FT	A	GP	Fairbanks	203	18E / F	12.0		71,624	970	0	44,131	116,725	0
10-1840	Natural Resource Specialist II	FT	A	GP	Anchorage	200	16K	12.0		68,699	930	0	43,096	112,725	0
10-1841	Hydrologist II	FT	A	GP	Anchorage	200	19C / D	12.0		68,375	926	0	42,981	112,282	0
10-1842	Nat Res Speciii	FT	A	GP	Anchorage	200	18B / C	12.0		62,908	852	0	41,047	104,807	0
10-1843	Land Surveyor II	FT	A	SS	Anchorage	200	22K / L	12.0		107,501	0	0	56,864	164,365	156,147
10-1844	Natural Resource Specialist II	FT	A	GP	Fairbanks	203	16C / D	12.0		58,810	796	0	39,597	99,203	0
10-1846	Nat Res Speciii	FT	A	GP	Anchorage	200	18D / E	12.0		68,088	922	0	42,880	111,890	44,756
10-1847	Natural Resource Specialist II	FT	A	GP	Anchorage	200	16J / K	12.0		68,608	929	0	43,064	112,601	0
10-1848	Land Surveyor II	FT	A	SS	Fairbanks	99	22Q	12.0		124,781	0	0	62,978	187,759	182,126
10-1850	Nat Res Speciii	FT	A	GP	Anchorage	200	18B / C	12.0		63,882	865	0	41,392	106,139	0
10-1852	Nat Res Speciii	FT	A	GP	Anchorage	200	18L / M	12.0		82,046	1,111	0	47,818	130,975	125,736
10-1854	Natural Resource Specialist I	FT	A	GP	Anchorage	200	14C / D	12.0		48,409	655	0	35,917	84,981	84,981
10-1855	Nat Res Speciii	FT	A	GP	Anchorage	200	18C / D	12.0		64,984	880	0	41,782	107,646	107,646
10-1856	Natural Resource Manager II	FT	A	SS	Anchorage	200	20F / J	12.0		88,509	0	0	50,145	138,654	0
10-1857	Natural Resource Specialist II	FT	A	GP	Anchorage	200	16B / C	12.0		54,137	733	0	37,944	92,814	92,814
10-1859	Natural Resource Manager I	FT	A	SS	Anchorage	200	18B / C	12.0		67,940	0	0	42,867	110,807	99,726
10-1860	Analyst/Programmer II	FT	A	GP	Anchorage	200	16B / C	12.0		55,005	745	0	38,251	94,001	0
10-1861	Land Surveyor I	FT	A	GP	Anchorage	200	21C / D	12.0		78,375	1,061	0	46,519	125,955	0
10-1862	Land Surveyor II	FT	A	GP	Anchorage	200	22L / M	12.0		108,557	1,470	0	57,198	167,225	0
10-1864	Administrative Assistant I	FT	A	GP	Anchorage	200	12G	12.0		48,185	652	0	35,838	84,675	0
10-1865	Nat Res Techiii	FT	A	GP	Anchorage	200	14B / C	12.0		48,185	652	0	35,838	84,675	0
10-1866	Natural Resource Specialist II	FT	A	GP	Anchorage	200	16D / E	12.0		58,403	791	0	39,453	98,647	0

Note: If a position is split, an asterisk (\*) will appear in the Split/Count column. If the split position is also counted in the component, two asterisks (\*\*) will appear in this column. [No valid job title] appearing in the Job Class Title indicates that the PCN has an invalid class code or invalid range for the class code effective date of this scenario.

**Personal Services Expenditure Detail**  
**Department of Natural Resources**

**Scenario:** FY2022 Governor (17280)  
**Component:** Mining, Land & Water (3002)  
**RDU:** Fire Suppression, Land & Water Resources (602)

PCN	Job Class Title	Time Status	Retire Code	Barg Unit	Location	Salary Sched	Range / Step	Comp Months	Split / Count	Annual Salaries	COLA	Premium Pay	Annual Benefits	Total Costs	UGF Amount
10-1867	Nat Res Speciii	FT	A	GP	Anchorage	200	18B / C	12.0		63,705	862	0	41,329	105,896	0
10-1869	Nat Res Speciii	FT	A	GP	Anchorage	200	18C / D	12.0		64,249	870	0	41,522	106,641	0
10-1870	Geologist II	FT	A	GP	Fairbanks	203	17L / M	12.0		79,211	1,072	0	46,815	127,098	0
10-1871	Geologist II	FT	A	GP	Fairbanks	203	17C / D	12.0		62,608	848	0	40,941	104,397	0
10-1872	Geologist III	FT	A	GP	Anchorage	200	19B	12.0		66,086	895	0	42,172	109,153	0
10-1873	Natural Resource Specialist II	FT	A	GP	Fairbanks	203	16B / C	12.0		56,357	763	0	38,729	95,849	0
10-1877	Nat Res Speciii	FT	A	GP	Anchorage	200	18B / C	12.0		63,882	865	0	41,392	106,139	0
10-1878	Nat Res Speciii	FT	A	GP	Anchorage	200	18F / G	12.0		72,300	979	0	44,370	117,649	117,649
10-1879	Nat Res Speciii	FT	A	GP	Anchorage	200	18M	12.0		83,714	1,133	0	48,408	133,255	0
10-1882	Land Surveyor I	FT	A	GP	Anchorage	200	21C / D	12.0		80,748	1,093	0	47,359	129,200	129,200
10-1885	Engineering Assistant II	FT	A	GP	Anchorage	200	19B / C	12.0		67,633	916	0	42,719	111,268	11,127
10-1887	Natural Resource Specialist II	FT	A	GP	Anchorage	200	16B	12.0		53,703	727	0	37,790	92,220	92,220
10-1888	Natural Resource Specialist II	FT	A	GP	Anchorage	200	16B / C	12.0		54,715	741	0	38,148	93,604	93,604
10-1889	Natural Resource Specialist II	FT	A	GP	Anchorage	200	16C / D	12.0		57,264	775	0	39,050	97,089	97,089
10-1890	Nat Res Speciii	FT	A	GP	Anchorage	200	18B / C	12.0		62,288	843	0	40,828	103,959	101,880
10-1891	Natural Resource Specialist II	FT	A	GP	Fairbanks	203	16J / K	12.0		70,298	952	0	43,662	114,912	111,465
10-1892	Engineering Associate I, Dec	FT	A	GP	Juneau	205	21C / D	12.0		84,157	1,139	0	48,565	133,861	131,184
10-1893	Natural Resource Specialist I	FT	A	GP	Anchorage	200	14B / C	12.0		48,185	652	0	35,838	84,675	0
10-1894	Natural Resource Specialist I	FT	A	GP	Anchorage	200	14B / C	12.0		47,990	650	0	35,769	84,409	0
10-1895	Natural Resource Specialist II	FT	A	GP	Fairbanks	103	16A / B	12.0		55,829	756	0	38,543	95,128	0
10-2037	Hydrologist II	FT	A	GP	Fairbanks	203	19B / C	12.0		70,317	952	0	43,668	114,937	62,747
10-2051	Natural Resource Specialist II	FT	A	GP	Anchorage	200	16E / F	12.0		60,251	816	0	40,107	101,174	91,057
10-2056	Administrative Assistant II	FT	A	GP	Anchorage	200	14B / C	12.0		47,015	636	0	35,424	83,075	0
10-2078	Hydrologist IV	FT	A	SS	Anchorage	200	21F	12.0		92,269	0	0	51,475	143,744	28,749
10-2097	Engineering Assistant II	FT	A	GP	Anchorage	200	19C / D	12.0		69,748	944	0	43,467	114,159	0
10-2108	Nat Res Speciii	FT	A	GP	Anchorage	200	18B / C	12.0		63,882	865	0	41,392	106,139	0
10-2142	Natural Resource Specialist II	FT	A	GP	Fairbanks	203	16J / K	12.0		70,018	948	0	43,563	114,529	0
10-2143	Hydrologist I	FT	A	GP	Anchorage	200	17D / E	12.0		62,288	843	0	40,828	103,959	0

Note: If a position is split, an asterisk (\*) will appear in the Split/Count column. If the split position is also counted in the component, two asterisks (\*\*) will appear in this column. [No valid job title] appearing in the Job Class Title indicates that the PCN has an invalid class code or invalid range for the class code effective date of this scenario.

**Personal Services Expenditure Detail**  
**Department of Natural Resources**

**Scenario:** FY2022 Governor (17280)  
**Component:** Mining, Land & Water (3002)  
**RDU:** Fire Suppression, Land & Water Resources (602)

PCN	Job Class Title	Time Status	Retire Code	Barg Unit	Location	Salary Sched	Range / Step	Comp Months	Split / Count	Annual Salaries	COLA	Premium Pay	Annual Benefits	Total Costs	UGF Amount
10-2145	Hydrologist II	FT	A	GP	Juneau	205	19L	12.0		90,948	1,231	0	50,968	143,147	0
10-2174	Natural Resource Manager II	FT	A	SS	Juneau	205	20C / D	12.0		83,293	0	0	48,299	131,592	0
10-2197	Land Surveyor I	FT	A	GP	Anchorage	200	21B / C	12.0		77,343	1,047	0	46,154	124,544	0
10-3043	Natural Resource Manager II	FT	A	SS	Fairbanks	203	20F	12.0		88,982	0	0	50,312	139,294	0
10-3063	Nat Res Speciii	FT	A	GP	Anchorage	200	18F / G	12.0		72,767	985	0	44,535	118,287	59,144
10-5093	Land Survey Specialist I	FT	A	GP	Anchorage	200	18M	12.0		83,714	1,133	0	48,408	133,255	0
10-7006	Natural Resource Manager III	FT	A	SS	Anchorage	200	22L	12.0		108,638	0	0	57,266	165,904	0
10-8201	Administrative Officer I	FT	A	GP	Anchorage	200	17F / G	12.0		67,542	914	0	42,687	111,143	55,572
10-8205	Natural Resource Specialist II	FT	A	GP	Anchorage	200	16B / C	12.0		54,426	737	0	38,046	93,209	0
10-8208	Appraiser II	FT	A	GP	Anchorage	200	18G / J	12.0		74,799	1,013	0	45,254	121,066	0
10-8209	Natural Resource Specialist II	FT	A	GP	Fairbanks	203	16C / D	12.0		58,088	786	0	39,342	98,216	0
10-8212	Natural Resource Specialist II	FT	A	GP	Anchorage	200	16G	12.0		63,882	865	0	41,392	106,139	0
10-8222	Natural Resource Technician II	FT	A	GP	Anchorage	200	12C / D	12.0		42,781	579	0	33,926	77,286	0
10-8225	Geologist III	FT	A	GP	Fairbanks	203	19G / J	12.0		80,637	1,092	0	47,320	129,049	0
10-8226	Geologist IV	FT	A	SS	Anchorage	99	21L / M	12.0		94,784	0	0	52,365	147,149	36,787
10-8237	Administrative Assistant II	FT	A	GP	Anchorage	200	14D / E	12.0		50,950	690	0	36,816	88,456	0
10-8239	Geologist II	FT	A	GP	Anchorage	200	17L	12.0		75,777	1,026	0	45,600	122,403	44,065
10-8244	Natural Resource Manager I	FT	A	SS	Anchorage	200	18D / E	12.0		71,063	0	0	43,972	115,035	0
10-8246	Geologist V	FT	A	SS	Fairbanks	203	22L	12.0		111,904	0	0	58,422	170,326	0
10-8247	Geologist V	FT	A	SS	Anchorage	200	22D / E	12.0		92,897	0	0	51,697	144,594	0
10-8248	Geologist IV	FT	A	SS	Fairbanks	203	21B / C	12.0		85,078	0	0	48,931	134,009	0
10-8249	Engineering Associate	FT	A	SS	Anchorage	99	21L / M	12.0		95,490	0	0	52,615	148,105	0
10-8251	Division Director - Px	FT	A	XE	Anchorage	N00	27L / M	12.0		130,692	0	0	64,925	195,617	0
10-8255	Natural Resource Specialist II	FT	A	GP	Anchorage	200	16B / C	12.0		54,065	732	0	37,919	92,716	92,716
10-N13096	Nat Res Techiii	NP	N	GP	Nome	237	14A	12.0		61,757	700	0	27,053	89,510	0
10-N18003	Engineering Assistant II	NP	N	GP	Anchorage	200	19Q	12.0		101,634	1,152	0	32,389	135,175	0
10-N18007	Nat Res Speciii	NP	N	GP	Anchorage	200	18A	12.0		59,631	676	0	26,769	87,076	0
11-4348	Nat Res Speciii	FT	A	GP	Anchorage	200	18L	12.0		81,081	1,098	0	47,477	129,656	129,656

Note: If a position is split, an asterisk (\*) will appear in the Split/Count column. If the split position is also counted in the component, two asterisks (\*\*) will appear in this column. [No valid job title] appearing in the Job Class Title indicates that the PCN has an invalid class code or invalid range for the class code effective date of this scenario.

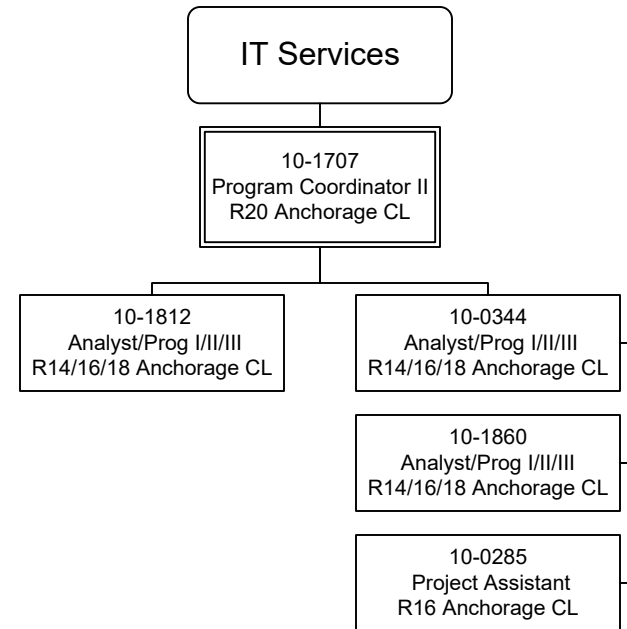
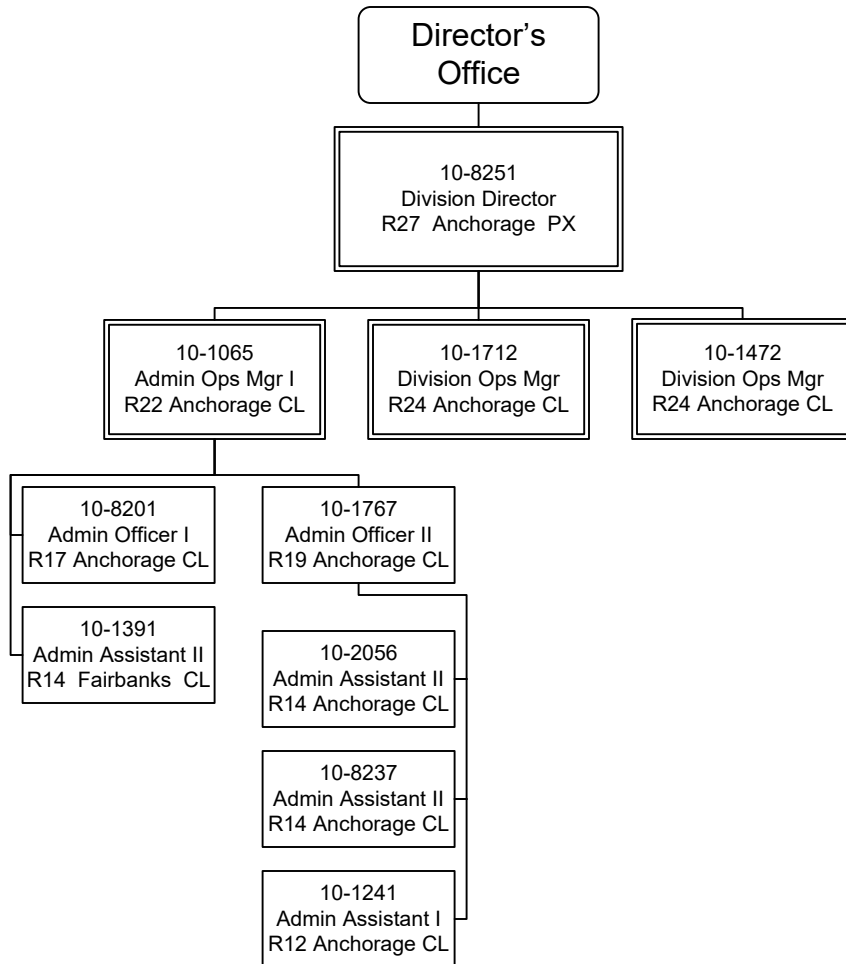
**Personal Services Expenditure Detail**  
**Department of Natural Resources**

**Scenario:** FY2022 Governor (17280)  
**Component:** Mining, Land & Water (3002)  
**RDU:** Fire Suppression, Land & Water Resources (602)

PCN	Job Class Title	Time Status	Retire Code	Barg Unit	Location	Salary Sched	Range / Step	Comp Months	Split / Count	Annual Salaries	COLA	Premium Pay	Annual Benefits	Total Costs	UGF Amount
	<b>Total Positions</b>		<b>New</b>	<b>Deleted</b>										<b>Total Salary Costs:</b>	15,072,415
														<b>Total COLA:</b>	138,027
	<b>Full Time Positions:</b>	207	0	0										<b>Total Premium Pay:</b>	0
	<b>Part Time Positions:</b>	0	0	0										<b>Total Benefits:</b>	9,231,493
	<b>Non Permanent Positions:</b>	3	0	0											
	<b>Positions in Component:</b>	210	0	0										<b>Total Pre-Vacancy:</b>	24,441,935
														<b>Minus Vacancy Adjustment of 5.22%:</b>	(1,275,635)
														<b>Total Post-Vacancy:</b>	23,166,300
	<b>Total Component Months:</b>	2,520.0												<b>Plus Lump Sum Premium Pay:</b>	0
														<b>Personal Services Line 100:</b>	23,166,300

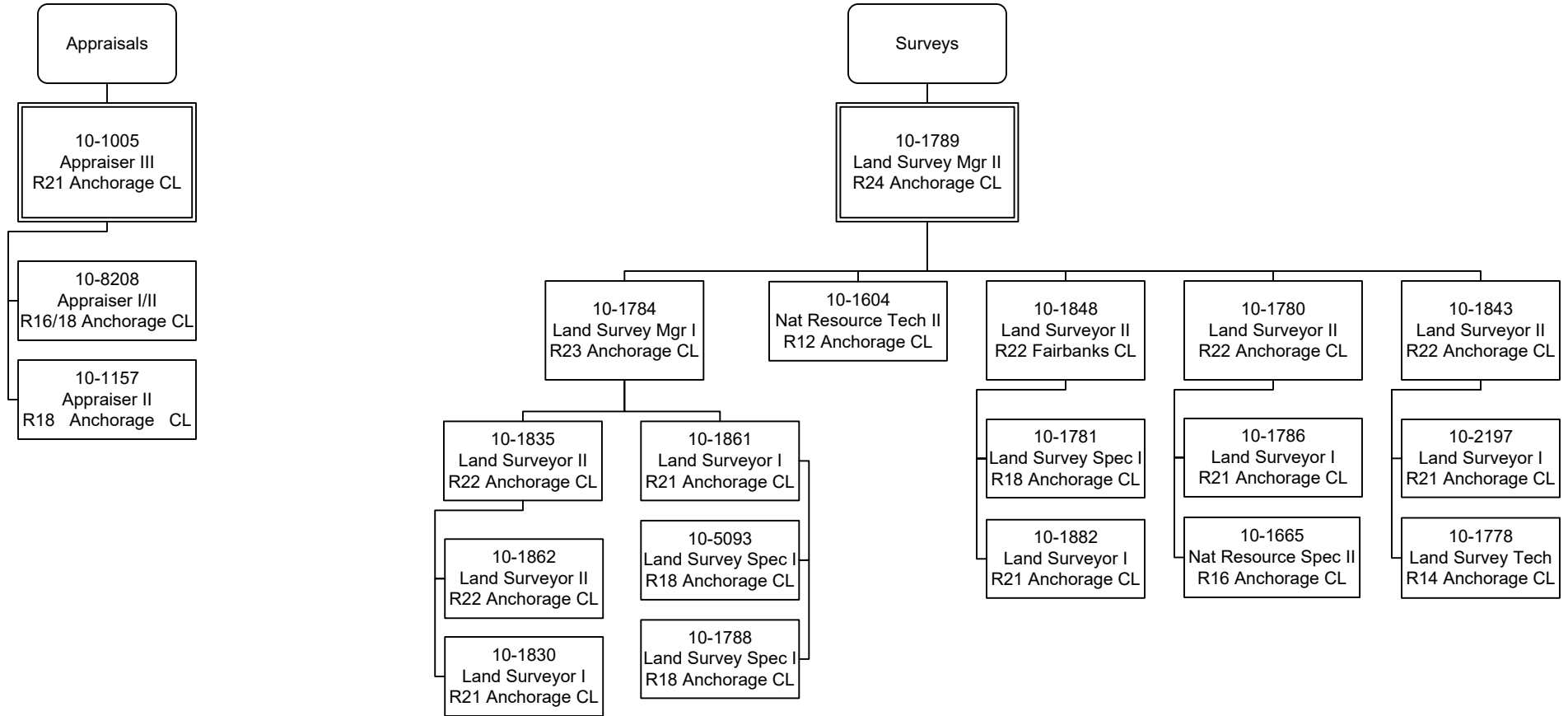
<b>PCN Funding Sources:</b>	<b>Pre-Vacancy</b>	<b>Post-Vacancy</b>	<b>Percent</b>
1002 Federal Receipts	893,307	846,685	3.65%
1003 General Fund Match	250,215	237,157	1.02%
1004 General Fund Receipts	3,407,666	3,229,819	13.94%
1005 General Fund/Program Receipts	12,343,540	11,699,325	50.50%
1007 Interagency Receipts	497,192	471,243	2.03%
1061 Capital Improvement Project Receipts	340,489	322,719	1.39%
1105 Alaska Permanent Fund Corporation Receipts	1,721,346	1,631,509	7.04%
1108 Statutory Designated Program Receipts	58,102	55,070	0.24%
1153 State Land Disposal Income Fund	4,555,859	4,318,086	18.64%
1154 Shore Fisheries Development Lease Program	368,002	348,796	1.51%
1192 Mine Reclamation Trust Fund	6,216	5,891	0.03%
<b>Total PCN Funding:</b>	<b>24,441,935</b>	<b>23,166,300</b>	<b>100.00%</b>

Note: If a position is split, an asterisk (\*) will appear in the Split/Count column. If the split position is also counted in the component, two asterisks (\*\*) will appear in this column. [No valid job title] appearing in the Job Class Title indicates that the PCN has an invalid class code or invalid range for the class code effective date of this scenario.



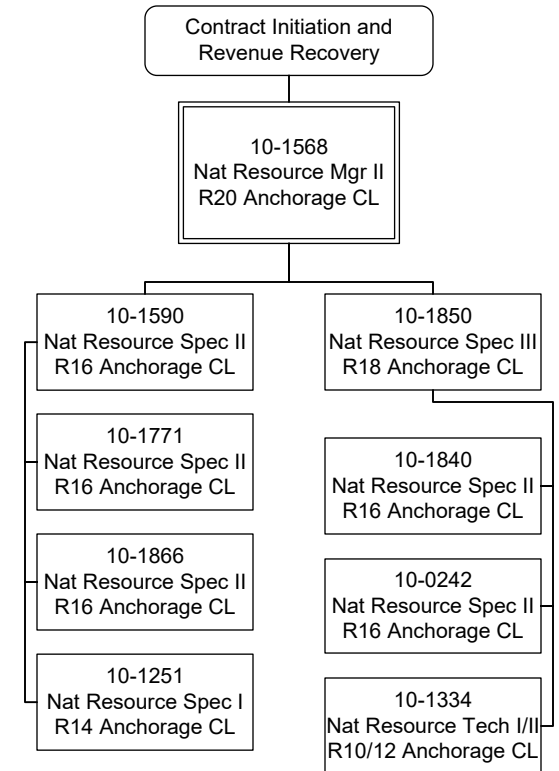
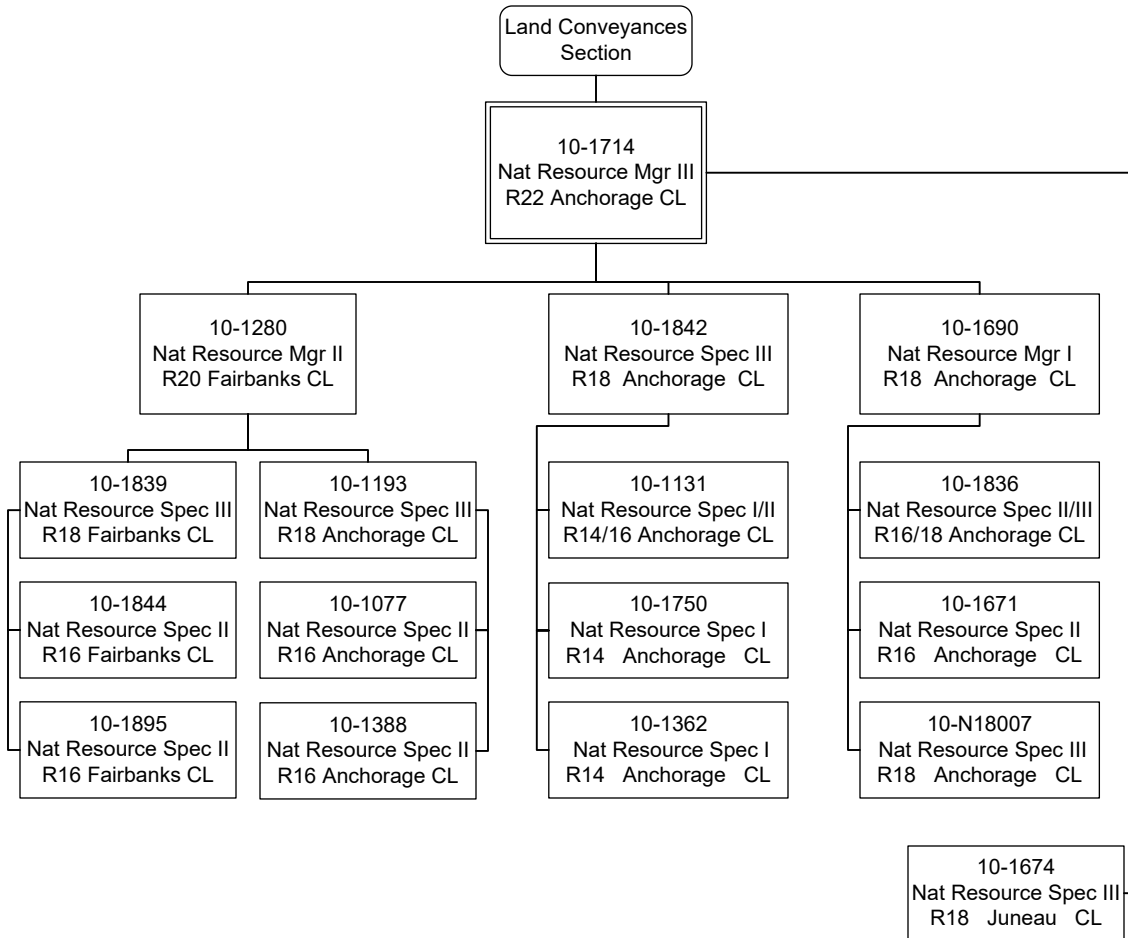
# Appraisals & Surveys

Department of Natural Resources  
3002 - Mining, Land & Water  
FY2022 Governor Budget



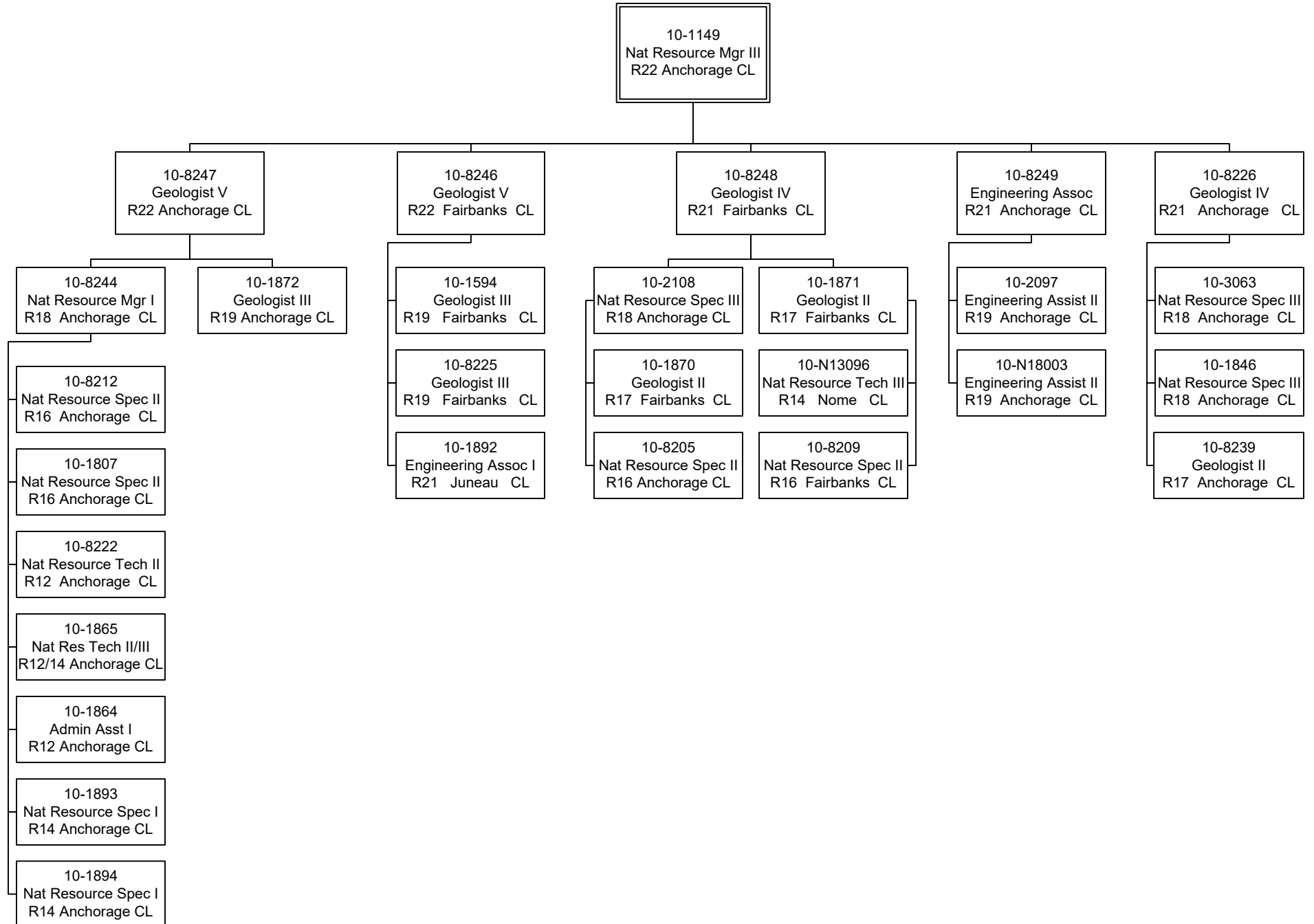
Land Sales &  
Contract Initiation and Revenue Recovery

Department of Natural Resources  
3002 - Mining, Land & Water  
FY2022 Governor Budget



# Mining

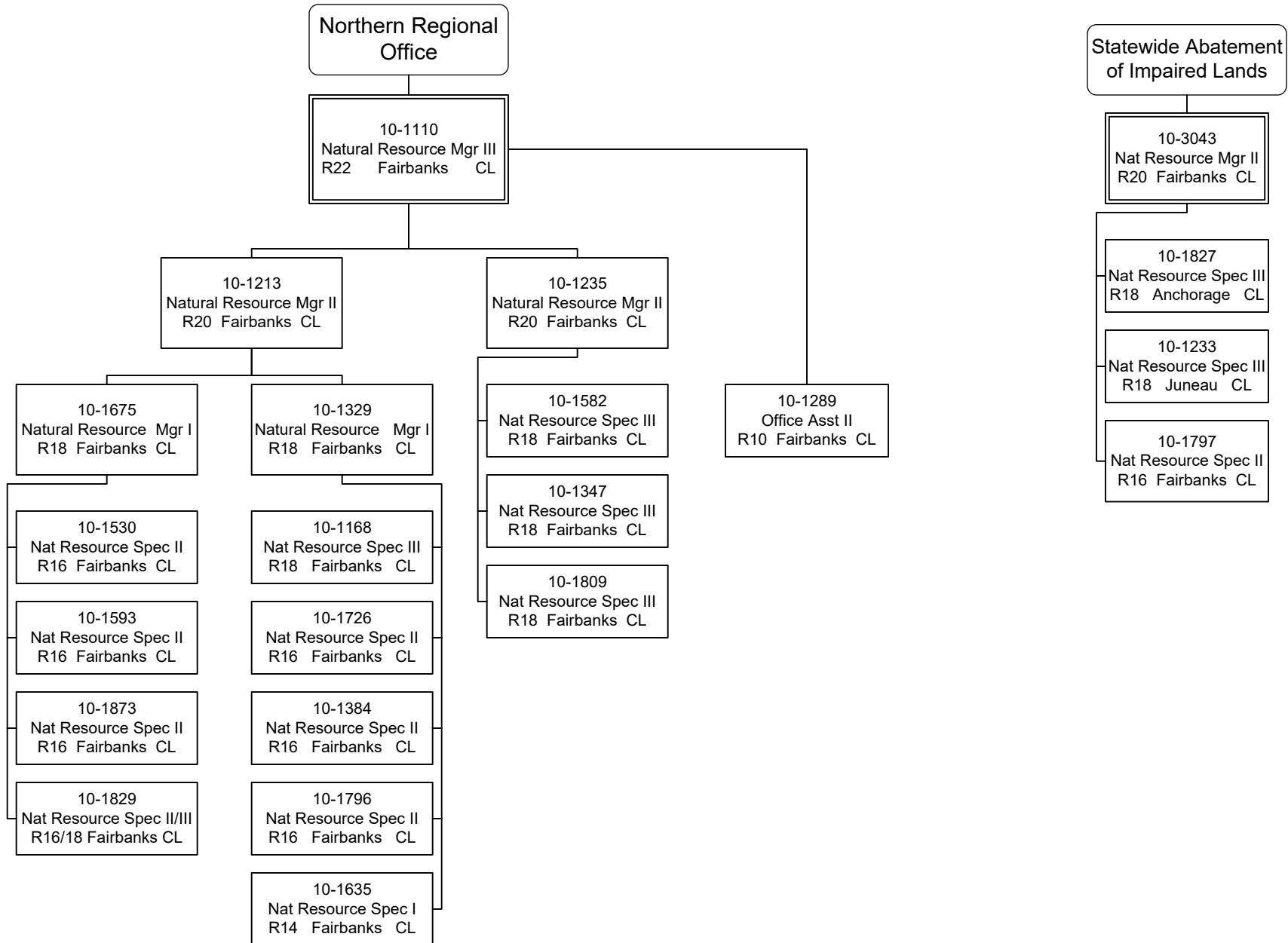
Department of Natural Resources  
3002 - Mining, Land & Water  
FY2022 Governor Budget

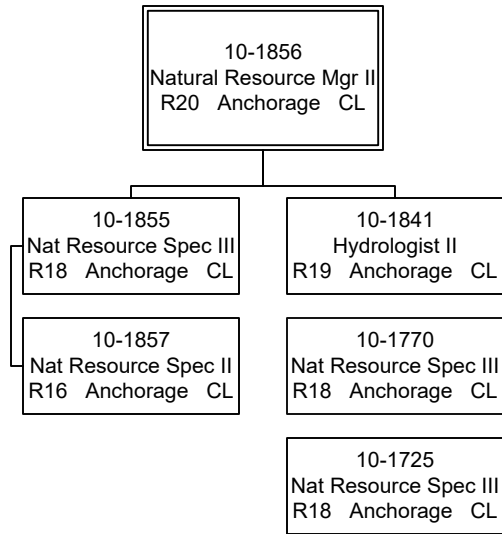




Northern Regional Office & SAIL

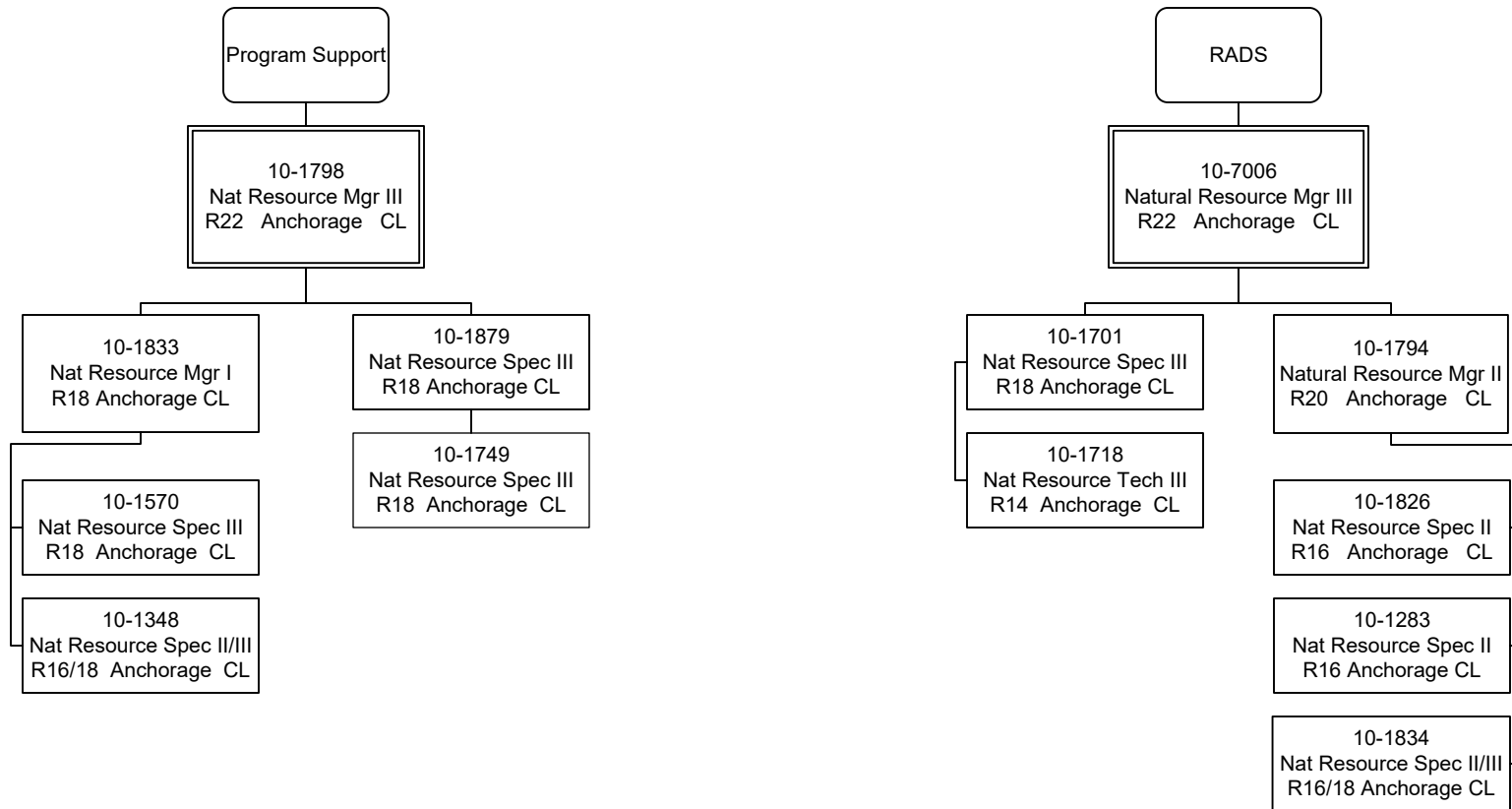
Department of Natural Resources  
3002 - Mining, Land & Water  
FY2022 Governor Budget





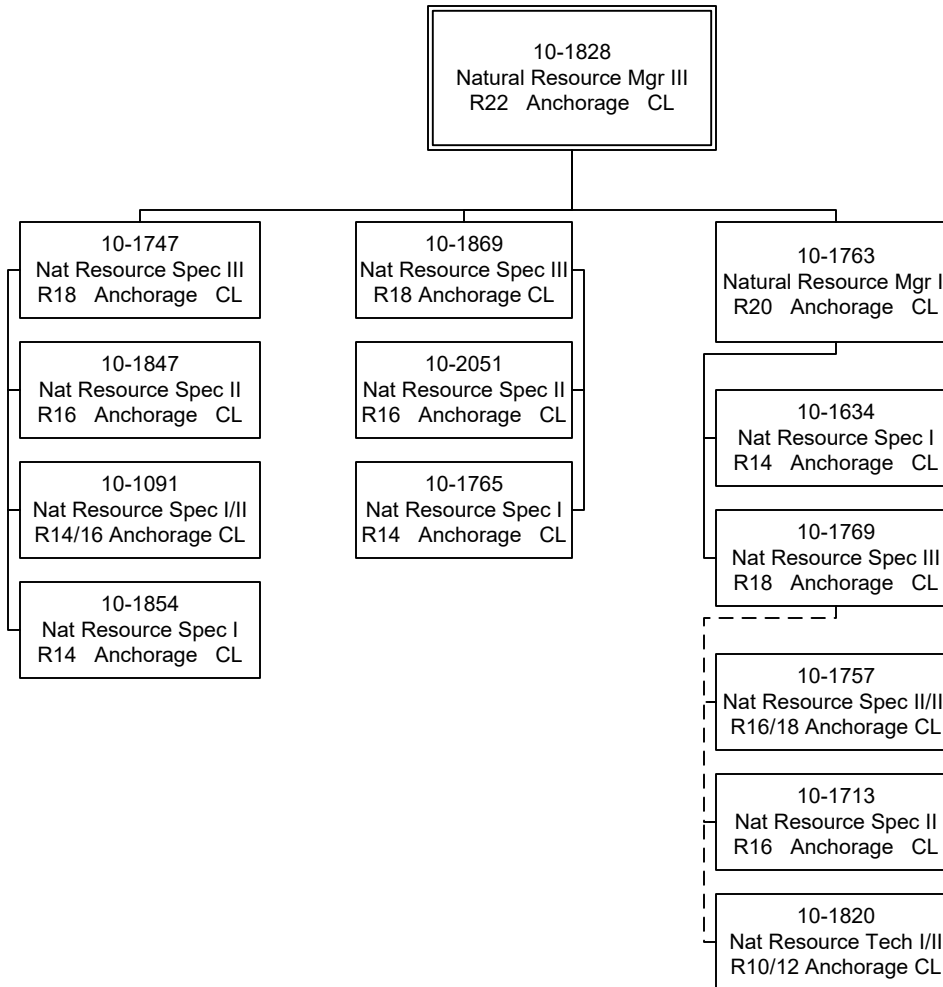
Resource Assessment and  
Development Section (RADS) & Program Support

Department of Natural Resources  
3002 - Mining, Land & Water  
FY2022 Governor Budget



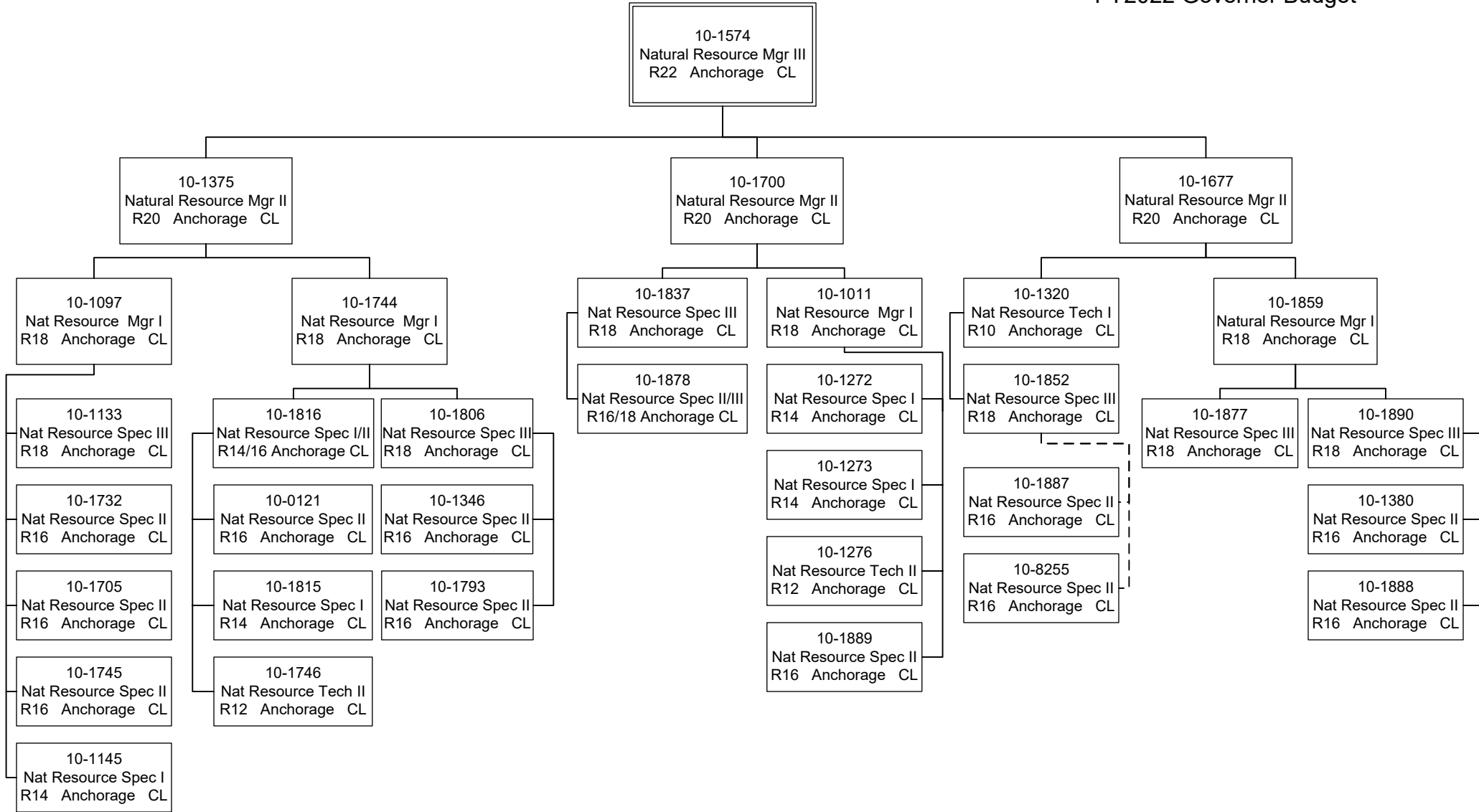
Realty Services

Department of Natural Resources  
3002 - Mining, Land & Water  
FY2022 Governor Budget



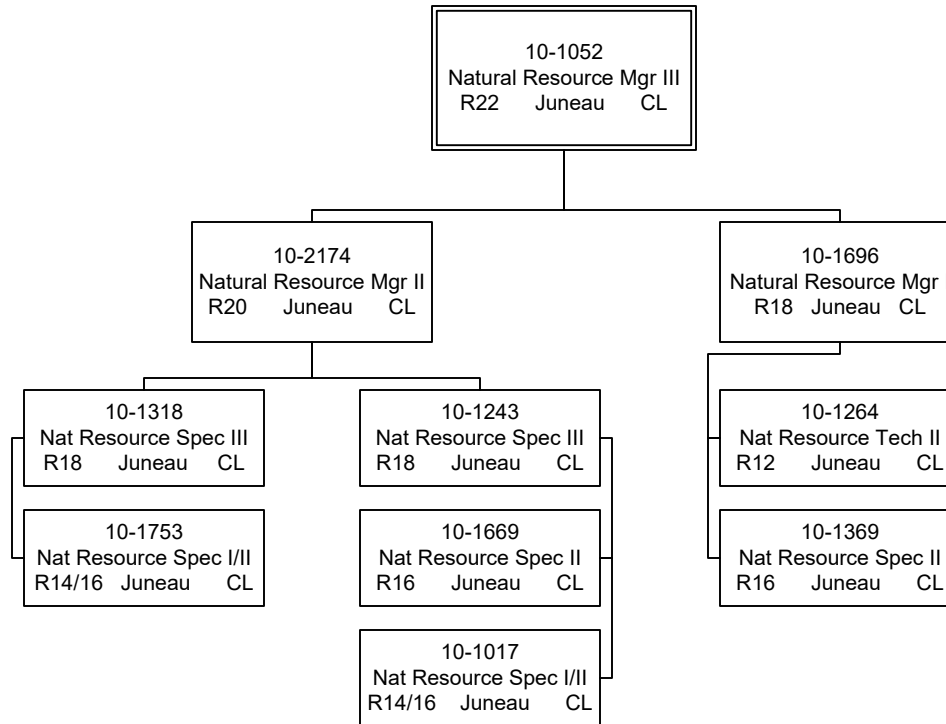
Southcentral Regional Office

Department of Natural Resources  
3002 - Mining, Land & Water  
FY2022 Governor Budget



Southeast Regional Office

Department of Natural Resources  
3002 - Mining, Land & Water  
FY2022 Governor Budget



# Water Development

Department of Natural Resources  
3002 - Mining, Land & Water  
FY2022 Governor Budget

