

State of Alaska FY2022 Governor's Operating Budget

Department of Education and Early Development School Finance & Facilities Component Budget Summary

Component: School Finance & Facilities**Contribution to Department's Mission**

To allocate and account for resources distributed to Alaska school districts and Mt. Edgecumbe High School and provide services that promote safe facilities which support quality education programs.

Major Component Accomplishments in 2020

- Provided timely, accurate payments to school districts through K-12 Support formula programs;
- Provided training to school districts, finance officers, and facility managers;
- Completed analysis and review of school district operating fund budgets and annual audited financial statements for compliance with statutes and regulations;
- Completing the first collection of the new Every Student Succeeds Act (ESSA) Per Pupil Expenditure (PPE) reporting requirement, which informs the public as to the amount of funding spent per student, and adding that to the online data portal for Alaska's families, *The Compass: A Guide to Alaska's Public Schools*; and
- Completed annual Capital Improvement Project (CIP) prioritized list in accordance with statute and regulation.

Key Component Challenges

- Providing technical assistance to school districts with varying size, locations, and complexities;
- Continuing to provide support to school districts related to the continuously changing dynamics regarding instruction and the financial impacts, as they relate to the COVID-19 health pandemic;
- Continuing to review and update department publications so the publications represent current standards;
- Continuing to review the annual ranking process for capital project and bond reimbursement payment streams;
- Providing technical support to school districts to ensure compliance by all districts as it relates to the new retro-commissioning requirement within a district's preventive maintenance certification, starting in the 2021-2022 school year; and
- Providing assistance and training to school districts on the PPE by School reporting requirement in ESSA

Significant Changes in Results to be Delivered in FY2022

There are no significant changes in results to be delivered in FY2022.

Statutory and Regulatory Authority

AS 14.03.140 – 150	AS 14.50
AS 14.07.010-030	AS 37.15.011
AS 14.07.060	AS 43.50.140
AS 14.08.111	4 AAC 09
AS 14.08.151	4 AAC 27
AS 14.09	4 AAC 31
AS 14.11	4 AAC 33
AS 14.14.050-065	4 AAC 40
AS 14.14.090	4 AAC 52.700
AS 14.17	

Contact Information

Contact Information

Contact: Heidi Teshner, Division Director
Phone: (907) 465-2875
E-mail: heidi.teshner@alaska.gov

School Finance & Facilities Personal Services Information				
Authorized Positions			Personal Services Costs	
	<u>FY2021</u> <u>Management</u> <u>Plan</u>	<u>FY2022</u> <u>Governor</u>		
Full-time	11	11	Annual Salaries	1,044,508
Part-time	0	0	COLA	9,336
Nonpermanent	0	0	Premium Pay	0
			Annual Benefits	555,906
			<i>Less 0.73% Vacancy Factor</i>	<i>(11,750)</i>
			Lump Sum Premium Pay	0
Totals	11	11	Total Personal Services	1,598,000

Position Classification Summary					
Job Class Title	Anchorage	Fairbanks	Juneau	Others	Total
Architectural Assistant	0	0	1	0	1
Audit & Review Analyst II	0	0	1	0	1
Building Management Specialist	0	0	1	0	1
Division Director - Px	0	0	1	0	1
School Finance Manager	0	0	1	0	1
School Finance Specialist II	0	0	5	0	5
Tech Eng/Arch I	0	0	1	0	1
Totals	0	0	11	0	11

Component Detail All Funds
Department of Education and Early Development

Component: School Finance & Facilities (2737)
RDU: Education Support and Administrative Services (677)

Non-Formula Component

	FY2020 Actuals	FY2021 Conference Committee	FY2021 Authorized	FY2021 Management Plan	FY2022 Governor	FY2021 Management Plan vs FY2022 Governor	
71000 Personal Services	1,547.5	1,590.1	1,590.1	1,588.6	1,598.0	9.4	0.6%
72000 Travel	24.3	72.6	72.6	29.2	29.2	0.0	0.0%
73000 Services	852.8	809.6	809.6	854.5	854.5	0.0	0.0%
74000 Commodities	5.8	6.0	6.0	6.0	6.0	0.0	0.0%
75000 Capital Outlay	0.0	6.0	6.0	6.0	6.0	0.0	0.0%
77000 Grants, Benefits	53.3	0.0	0.0	0.0	0.0	0.0	0.0%
78000 Miscellaneous	0.0	0.0	0.0	0.0	0.0	0.0	0.0%
Totals	2,483.7	2,484.3	2,484.3	2,484.3	2,493.7	9.4	0.4%
Fund Sources:							
1001 CBR Fund (UGF)	0.0	389.0	389.0	389.0	0.0	-389.0	-100.0%
1002 Fed Rcpts (Fed)	2.2	0.0	0.0	0.0	0.0	0.0	0.0%
1004 Gen Fund (UGF)	1,558.6	1,166.8	1,166.8	1,166.8	2,493.7	1,326.9	113.7%
1007 I/A Rcpts (Other)	922.9	928.5	928.5	928.5	0.0	-928.5	-100.0%
Unrestricted General (UGF)	1,558.6	1,555.8	1,555.8	1,555.8	2,493.7	937.9	60.3%
Designated General (DGF)	0.0	0.0	0.0	0.0	0.0	0.0	0.0%
Other Funds	922.9	928.5	928.5	928.5	0.0	-928.5	-100.0%
Federal Funds	2.2	0.0	0.0	0.0	0.0	0.0	0.0%
Positions:							
Permanent Full Time	11	11	11	11	11	0	0.0%
Permanent Part Time	0	0	0	0	0	0	0.0%
Non Permanent	0	0	0	0	0	0	0.0%

Change Record Detail - Multiple Scenarios with Descriptions
Department of Education and Early Development

Component: School Finance & Facilities (2737)
RDU: Education Support and Administrative Services (677)

Scenario/Change Record Title	Trans Type	Totals	Personal Services	Travel	Services	Commodities	Capital Outlay	Grants, Benefits	Miscellaneous	Positions		NP
										PFT	PPT	
***** Changes From FY2021 Conference Committee To FY2021 Authorized *****												
Conference Committee												
	ConfCom	2,484.3	1,590.1	72.6	809.6	6.0	6.0	0.0	0.0	11	0	0
1001 CBR Fund		389.0										
1004 Gen Fund		1,166.8										
1007 I/A Rcpts		928.5										
Subtotal		2,484.3	1,590.1	72.6	809.6	6.0	6.0	0.0	0.0	11	0	0
***** Changes From FY2021 Authorized To FY2021 Management Plan *****												
Align Authority with Anticipated Expenditures												
	LIT	0.0	-1.5	-43.4	44.9	0.0	0.0	0.0	0.0	0	0	0
Transfer authority from personal services and travel to cover anticipated services costs. The remaining personal services and travel authority is sufficient to cover anticipated expenditures.												
Subtotal		2,484.3	1,588.6	29.2	854.5	6.0	6.0	0.0	0.0	11	0	0
***** Changes From FY2021 Management Plan To FY2022 Governor *****												
FY2022 Salary Adjustments												
	SalAdj	9.4	9.4	0.0	0.0	0.0	0.0	0.0	0.0	0	0	0
1004 Gen Fund		4.9										
1007 I/A Rcpts		4.5										
FY2022 1% COLA for ASEA/General Government (GG/GP/GY/GZ): \$9.4												
Fund Source Adjustment of CBRF to UGF												
	FndChg	0.0	0.0	0.0	0.0	0.0	0.0	0.0	0.0	0	0	0
1001 CBR Fund		-389.0										
1004 Gen Fund		389.0										
Replace Constitutional Budget Reserve Fund (CBRF) used as a one-time funding mechanism in FY2021.												
Replace Interagency Receipts for Facilities Staff with UGF												
	FndChg	0.0	0.0	0.0	0.0	0.0	0.0	0.0	0.0	0	0	0
1004 Gen Fund		933.0										
1007 I/A Rcpts		-933.0										

Replace interagency receipt authority with general funds. The School Finance and Facilities component has \$933,000 in inter-agency receipt authorization. This amount is 100% tied to the School Debt Reimbursement Program, of which \$793,050 or 85% comes from UGF and \$139,950 or 15% comes from the School Fund (DGF). When the School Debt Reimbursement program was vetoed for FY2021, all the interagency receipts became uncollectable, leaving an unintended

Change Record Detail - Multiple Scenarios with Descriptions
Department of Education and Early Development

Component: School Finance & Facilities (2737)
RDU: Education Support and Administrative Services (677)

Scenario/Change Record Title	Trans Type	Totals	Personal Services	Travel	Services	Commodities	Capital Outlay	Grants, Benefits	Miscellaneous	Positions		
										PFT	PPT	NP
shortfall within the School Finance and Facilities component.												
<p>These funds pay for the five Facilities positions whose work is to administer school capital projects that include State funding in order to ensure cost-effective execution of projects and provide guidance to districts pertaining to school facility planning, design, construction, and operations. The Facilities section manages State of Alaska educational assets, including land and buildings. Each year the Facilities section produces the prioritized School Construction and Major Maintenance Grant Fund lists which addresses statewide needs for school capital projects.</p> <p>In addition, the Facilities section supports and provides information to the statutorily (AS 14.11.014) required Bond Reimbursement and Grant Review Committee, whose purpose is to:</p> <ul style="list-style-type: none"> • review the Department's capital improvement project priorities; • make recommendations concerning grants and bond reimbursement project requests; • develop criteria for cost-effective school construction; • analyze existing prototypical school designs; • establish a grant application form; • establish a method of ranking grant projects; • recommend to the board necessary changes to the approval process for school construction grants and for projects for which bond reimbursement is requested; and, • set standards for school energy efficiency that minimize long-term energy and operating costs. <p>Other costs for the Facilities section include inter- and intra-departmental chargebacks; Department of Law legal services; travel relating to preventative maintenance reviews; contractual services related to the Program Demand Cost Model; and standard office expenditures such as copiers, supplies, etc. With continued uncertainty regarding funding the School Debt Reimbursement Program, School Finance and Facilities needs interagency receipts to be decreased and there be a proportional increase in unrestricted general funds; overall net zero change. This will allow the Facilities section to continue their statutory and regulatory required work supporting educational assets and school district capital needs across the state.</p>												
Totals		2,493.7	1,598.0	29.2	854.5	6.0	6.0	0.0	0.0	11	0	0

Line Item Detail (1676)
Department of Education and Early Development
Travel

Component: School Finance & Facilities (2737)

Line Number	Line Name		FY2020 Actuals	FY2021 Management Plan	FY2022 Governor
2000	Travel		24.3	29.2	29.2
Object Class	Servicing Agency	Explanation	FY2020 Actuals	FY2021 Management Plan	FY2022 Governor
2000 Travel Detail Totals			24.3	0.0	29.2
2000	In-State Employee Travel	In-State Transportation - Transportation costs for travel relating to administration, conventions and meetings, boards and commissions.	23.4	0.0	27.7
2001	In-State Non-Employee Travel	In-State Transportation - Transportation costs for State Board of Education members and non-employees traveling on state business.	0.5	0.0	0.0
2002	Out of State Employee Travel	Out-of-State Transportation - Transportation costs for travel relating to administration, conventions and meetings, boards and commissions.	1.3	0.0	1.5
2006	Other Travel Costs	Refund received for travel cost relating to administration, conventions and meetings, boards and commissions.	-0.9	0.0	0.0

Line Item Detail (1676)
Department of Education and Early Development
Services

Component: School Finance & Facilities (2737)

Line Number	Line Name		FY2020 Actuals	FY2021 Management Plan	FY2022 Governor
3000	Services		852.8	854.5	854.5
Object Class	Servicing Agency	Explanation	FY2020 Actuals	FY2021 Management Plan	FY2022 Governor
3000 Services Detail Totals			852.8	0.0	854.5
3000	Education Services	Training, educational conferences, agency memberships, books and fees for work-related courses.	7.2	0.0	7.2
3001	Financial Services	Accounting, auditing, management/consulting services.	66.5	0.0	85.5
3002	Legal and Judicial Services	Legal and judicial services, including costs to conduct hearings and transcription fees.	0.4	0.0	0.4
3004	Telecommunications	Local, long distance, cellular and telecommunications equipment charges; data/network, and television.	1.6	0.0	1.6
3007	Advertising and Promotions	Advertising, promotions, and legal notices.	2.1	0.0	2.1
3009	Structure/Infrastructure/Land	Pupil Transportation contractual obligations to provide semi-annual safety school bus inspections per AS 14.09.030.	335.9	0.0	330.0
3010	Equipment/Machinery	Machinery, furniture and equipment purchase, repairs, maintenance, rentals, and leases.	6.7	0.0	6.7
3011	Other Services	Other services, including strategic planning services, State Travel Office fees, and printer/copy machine supplies and maintenance.	0.3	0.0	13.7
3015	Inter-Agency Conservation/Environmental		2.2	0.0	0.0

Line Item Detail (1676)
Department of Education and Early Development
Services

Component: School Finance & Facilities (2737)

Object Class		Servicing Agency	Explanation	FY2020 Actuals	FY2021 Management Plan	FY2022 Governor
3000 Services Detail Totals				852.8	0.0	854.5
3015	Inter-Agency Conservation/Environmental	EnvCon - Department-wide	Department of Environmental Conservation for testing program for lead in drinking water at schools and child care facilities.	0.0	0.0	2.2
3017	Inter-Agency Information Technology Non-Telecommunications	Admin - Department-wide	Office of Information Technology chargeback for computer services (including Enterprise Productivity Rates and MICS charges for mainframe usage).	25.3	0.0	27.0
3018	Inter-Agency Information Technology Telecommunications	Admin - Department-wide	Office of Information Technology chargeback for telecommunications, Enterprise Productivity Rates, phone lines, and service requests.	24.0	0.0	24.0
3021	Inter-Agency Mail	Admin - Department-wide	Pro-rated share of expenses relating to central mailroom support and services.	0.6	0.0	1.2
3022	Inter-Agency Human Resources	Admin - Department-wide	Division of Personnel and Labor Relations - Human resource and personnel services.	35.0	0.0	30.0
3024	Inter-Agency Legal		Department of Law legal services and regulations review.	153.9	0.0	0.0
3024	Inter-Agency Legal	Law - Department-wide	Department of Law legal services and regulations review.	13.3	0.0	153.9
3027	Inter-Agency Financial	Admin - Department-wide	Division of Finance - Computer services for State accounting (IRIS), payroll (HRM), and reporting (ALDER) systems.	19.0	0.0	12.0
3029	Inter-Agency Education/Training			41.1	0.0	0.0
3029	Inter-Agency Education/Training	Labor - Department-wide	Alaska Vocational Technical Center - School Bus Driver Instructor Certification & Recertification Workshops.	0.0	0.0	20.0
3038	Inter-Agency			117.7	0.0	0.0

Line Item Detail (1676)
Department of Education and Early Development
Services

Component: School Finance & Facilities (2737)

Object Class	Servicing Agency	Explanation	FY2020 Actuals	FY2021 Management Plan	FY2022 Governor
3000 Services Detail Totals			852.8	0.0	854.5
3038	Management/Consulting Inter-Agency Management/Consulting	E&ED - Administrative Services (157) Administrative Services support to include, but not limited to: accounting; internal audit; budget preparation and management; federal and state financial reporting; procurement; human resources; and travel.	0.0	0.0	75.0
3038	Inter-Agency Management/Consulting	E&ED - Information Services (2148) Information Services support for centralized information technology services to include, but not limited to: database; network and server support; website maintenance; computer and data security; computer and computer periphery support; and maintenance agreements.	0.0	0.0	40.0
3038	Inter-Agency Management/Consulting	E&ED - Executive Administration (2736) Executive Administration provides leadership and support to all aspects of Alaska's education system by effectively and efficiently managing department programs to facilitate and improve delivery of educational services.	0.0	0.0	22.0

Line Item Detail (1676)
Department of Education and Early Development
Commodities

Component: School Finance & Facilities (2737)

Line Number	Line Name		FY2020 Actuals	FY2021 Management Plan	FY2022 Governor
4000	Commodities		5.8	6.0	6.0
Object Class	Servicing Agency	Explanation	FY2020 Actuals	FY2021 Management Plan	FY2022 Governor
		4000 Commodities Detail Totals	5.8	0.0	6.0
4000	Business	Business supplies including books and educational equipment and furniture; office supplies; desktop computers, printers and IT equipment less than \$5,000 per item; and subscriptions including electronic access to information.	5.8	0.0	6.0

Line Item Detail (1676)
Department of Education and Early Development
Capital Outlay

Component: School Finance & Facilities (2737)

Line Number	Line Name		FY2020 Actuals	FY2021 Management Plan	FY2022 Governor
5000	Capital Outlay		0.0	6.0	6.0
Object Class	Servicing Agency	Explanation	FY2020 Actuals	FY2021 Management Plan	FY2022 Governor
5000 Capital Outlay Detail Totals			0.0	0.0	6.0
5004	Equipment	Equipment and furniture.	0.0	0.0	6.0

Line Item Detail (1676)
Department of Education and Early Development
Grants, Benefits

Component: School Finance & Facilities (2737)

Line Number	Line Name		FY2020 Actuals	FY2021 Management Plan	FY2022 Governor
7000	Grants, Benefits		53.3	0.0	0.0
Object Class	Servicing Agency	Explanation	FY2020 Actuals	FY2021 Management Plan	FY2022 Governor
7000 Grants, Benefits Detail Totals			53.3	0.0	0.0
7003	Sub-Recipient Pass-Through Grants	Grants to school districts.	53.3	0.0	0.0

Revenue Detail (1681)
Department of Education and Early Development

Component: School Finance & Facilities (2737)

Revenue Type (OMB Fund Code)				FY2021	
Revenue Source	Component	Comment	FY2020 Actuals	Management Plan	FY2022 Governor
5002 Fed Rcpts (1002 Fed Rcpts)			2.2	0.0	0.0
5004 Federal Education - Miscellaneous Grants		Estimated federal receipts.	2.2	0.0	0.0
5007 I/A Rcpts (1007 I/A Rcpts)			922.9	0.0	0.0
5301 Inter-Agency Receipts	DebtSvc - Department-wide	Replace Interagency Receipts from the School Debt Reimbursement program for contractual, travel, personnel, and other operational costs for the School Finance and Facilities component with General Fund.	922.9	0.0	0.0

Inter-Agency Services (1682)
Department of Education and Early Development

Component: School Finance & Facilities (2737)

				FY2020 Actuals	FY2021 Management Plan	FY2022 Governor
Component Totals				117.2	0.0	407.3
With Department of Environmental Conservation				0.0	0.0	2.2
With Department of Administration				103.9	0.0	94.2
With Department of Law				13.3	0.0	153.9
With Department of Labor and Workforce Development				0.0	0.0	20.0
With Department of Education and Early Development				0.0	0.0	137.0
Object Class	Servicing Agency	Explanation	FY2020 Actuals	FY2021 Management Plan	FY2022 Governor	
3015	Inter-Agency Conservation/Environmental	EnvCon - Department-wide	0.0	0.0	2.2	
3017	Inter-Agency Information Technology Non-Telecommunications	Admin - Department-wide	25.3	0.0	27.0	
3018	Inter-Agency Information Technology Telecommunications	Admin - Department-wide	24.0	0.0	24.0	
3021	Inter-Agency Mail	Admin - Department-wide	0.6	0.0	1.2	
3022	Inter-Agency Human Resources	Admin - Department-wide	35.0	0.0	30.0	
3024	Inter-Agency Legal	Law - Department-wide	13.3	0.0	153.9	
3027	Inter-Agency Financial	Admin - Department-wide	19.0	0.0	12.0	

Inter-Agency Services (1682)
Department of Education and Early Development

Component: School Finance & Facilities (2737)

Object Class	Servicing Agency	Explanation	FY2020 Actuals	FY2021 Management Plan	FY2022 Governor
3029	Inter-Agency Education/Training	Labor - Department-wide			
		payroll (HRM), and reporting (ALDER) systems. Alaska Vocational Technical Center - School Bus Driver Instructor Certification & Recertification Workshops.	0.0	0.0	20.0
3038	Inter-Agency Management/Consulting	E&ED - Administrative Services (157)			
		Administrative Services support to include, but not limited to: accounting; internal audit; budget preparation and management; federal and state financial reporting; procurement; human resources; and travel.	0.0	0.0	75.0
3038	Inter-Agency Management/Consulting	E&ED - Information Services (2148)			
		Information Services support for centralized information technology services to include, but not limited to: database; network and server support; website maintenance; computer and data security; computer and computer periphery support; and maintenance agreements.	0.0	0.0	40.0
3038	Inter-Agency Management/Consulting	E&ED - Executive Administration (2736)			
		Executive Administration provides leadership and support to all aspects of Alaska's education system by effectively and efficiently managing department programs to facilitate and improve delivery of educational services.	0.0	0.0	22.0

Personal Services Expenditure Detail
Department of Education and Early Development

Scenario: FY2022 Governor (17280)
Component: School Finance & Facilities (2737)
RDU: Education Support and Administrative Services (677)

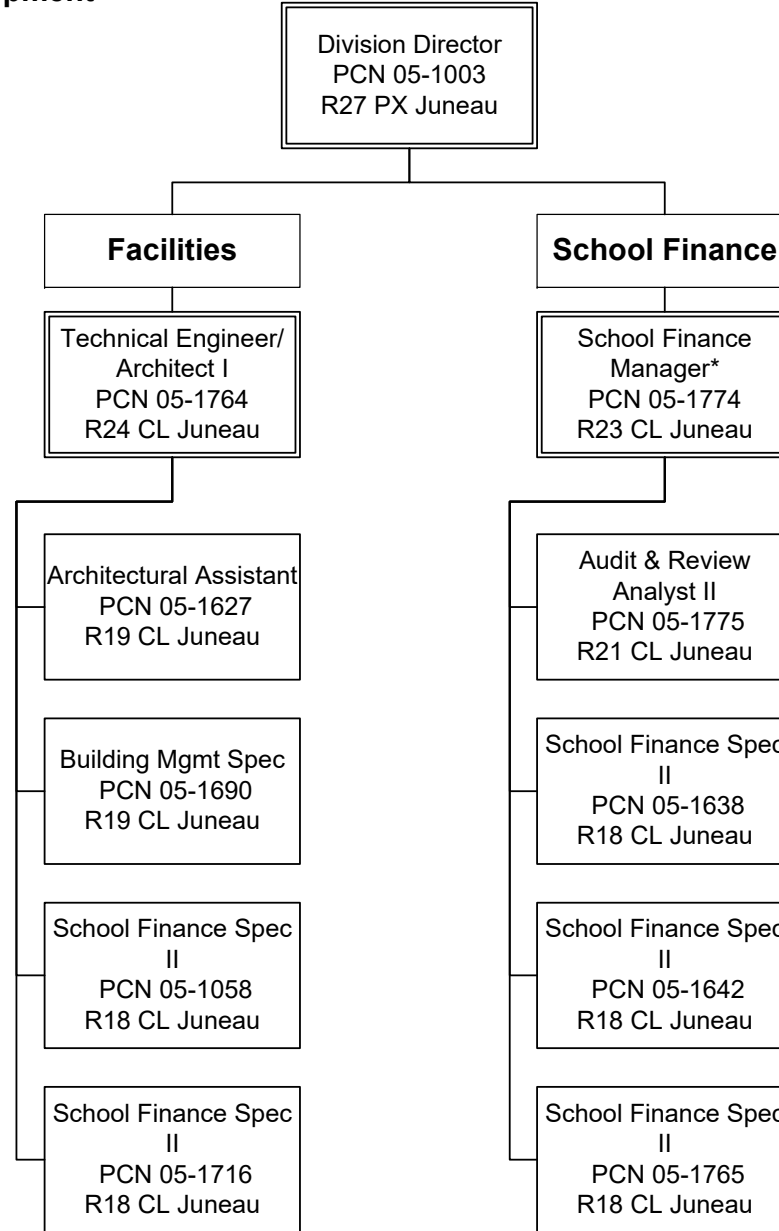
PCN	Job Class Title	Time Status	Retire Code	Barg Unit	Location	Salary Sched	Range / Step	Comp Months	Split / Count	Annual Salaries	COLA	Premium Pay	Annual Benefits	Total Costs	UGF Amount
05-1003	Division Director - Px	FT	A	XE	Juneau	N05	27K / L	6.0	**	70,882	0	0	33,677	104,559	104,559
05-1058	School Finance Specialist II	FT	A	GG	Juneau	205	18L	12.0		85,137	1,144	0	48,018	134,299	134,299
05-1627	Architectural Assistant	FT	A	GP	Juneau	205	19C / D	12.0		73,463	987	0	44,010	118,460	118,460
05-1638	School Finance Specialist II	FT	A	GP	Juneau	205	18G / J	12.0		79,326	1,066	0	46,023	126,415	126,415
05-1642	School Finance Specialist II	FT	A	GP	Juneau	99	18O	12.0		93,665	1,258	0	50,946	145,869	145,869
05-1690	Building Management Specialist	FT	A	GP	Juneau	205	19K	12.0		88,082	1,183	0	49,029	138,294	138,294
05-1716	School Finance Specialist II	FT	A	GP	Juneau	205	18J	12.0		79,853	1,073	0	46,204	127,130	127,130
05-1764	Tech Eng/Arch I	FT	A	SS	Juneau	205	24M / N	12.0		137,201	0	0	65,931	203,132	203,132
05-1765	School Finance Specialist II	FT	A	GP	Juneau	205	18M	12.0		87,906	1,181	0	48,968	138,055	138,055
05-1774	School Finance Manager	FT	A	SS	Juneau	99	23O / P	12.0		141,470	0	0	67,397	208,867	208,867
05-1775	Audit & Review Analyst II	FT	A	GP	Juneau	205	21M	12.0		107,523	1,444	0	55,703	164,670	164,670

													Total Salary Costs:	1,044,508
													Total COLA:	9,336
													Total Premium Pay:	0
													Total Benefits:	555,906
													Total Pre-Vacancy:	1,609,750
													Minus Vacancy Adjustment of 0.73%:	(11,750)
													Total Post-Vacancy:	1,598,000
													Plus Lump Sum Premium Pay:	0
													Personal Services Line 100:	1,598,000

PCN Funding Sources:	Pre-Vacancy	Post-Vacancy	Percent
1004 General Fund Receipts	1,609,750	1,598,000	100.00%
Total PCN Funding:	1,609,750	1,598,000	100.00%

Note: If a position is split, an asterisk (*) will appear in the Split/Count column. If the split position is also counted in the component, two asterisks (**) will appear in this column. [No valid job title] appearing in the Job Class Title indicates that the PCN has an invalid class code or invalid range for the class code effective date of this scenario.

State of Alaska
Department of Education and Early Development
School Finance and Facilities (2737)
FY2022 Governor Organization Chart



* PCN 05-1774 also supervises PCN 05-7606 in the Administrative Services component.

