

**State of Alaska
FY2022 Governor's Operating Budget**

**Department of Education and Early Development
Teacher Certification
Component Budget Summary**

Component: Teacher Certification**Contribution to Department's Mission**

To ensure that only qualified applicants are certified to teach in Alaska and that teacher education programs in Alaska conform to nationally recognized standards.

Core Services

- Accountability and oversight

Major Component Accomplishments in 2020

- Consistently completed the processing of the thousands of applications for initial certification or renewal of certification in less than two weeks of receipt of applications;
- Revised most of the teacher certification applications, checklists, and website pages so that they are ADA (Americans with Disabilities Act) compliant;
- Supported the University of Alaska Southeast's teacher preparation program during their first accreditation visit by the Council for the Accreditation of Educator Preparation (CAEP);
- Increased certification pathways through regulatory changes;
- Ongoing technical assistance to school districts as the state transitioned from the federal No Child Left Behind act (NCLB) to the Every Student Succeeds Act (ESSA) definitions of educator quality; and
- Provided school districts with out-of-field teacher reports so that they can notify the public as prescribed by ESSA.

Key Component Challenges

- Attracting and retaining teachers in most of Alaska school districts continues to be difficult;
- Some statutory and regulatory certification requirements are seen as barriers to attracting more people to the teaching profession in Alaska;
- Teacher certification database and document management systems are outdated and inefficient; and
- Transitioned from the highly qualified requirements of the federal No Child Left Behind act (NCLB) to the endorsement focused requirements of the Every Student Succeeds Act (ESSA) has highlighted the limitations of the teacher certification data collection and management system.

Significant Changes in Results to be Delivered in FY2022

- On-going revisions to teacher certification website to increase transparency for our customers and the public;
- Consolidate and expand online services to include an online initial application for educators;
- Upgrade the teacher certification unit's document management system;
- Continue to work with stakeholders to develop additional pathways to Alaska certification;
- Propose revision to regulations to stream-line certification requirements; and
- Continue to examine internal protocols and where possible simplify submission and processing of applications.

Statutory and Regulatory Authority

AS 14.20.010 - .040
AS 14.20.149
4 AAC 04.200 - 900
4 AAC 12.010 - 900
4 AAC 18.021

4 AAC 19
4 AAC 30.010 -020

Contact Information
<p>Contact: Tamara Van Wyhe, Division Director Phone: (907) 465-2857 E-mail: tamara.vanwyhe@alaska.gov</p>

Teacher Certification Personal Services Information				
Authorized Positions			Personal Services Costs	
	<u>FY2021</u> <u>Management</u> <u>Plan</u>	<u>FY2022</u> <u>Governor</u>		
Full-time	5	5	Annual Salaries	456,684
Part-time	0	0	COLA	3,744
Nonpermanent	0	0	Premium Pay	0
			Annual Benefits	240,727
			<i>Less 0.66% Vacancy Factor</i>	<i>(4,655)</i>
			Lump Sum Premium Pay	0
Totals	5	5	Total Personal Services	696,500

Position Classification Summary					
Job Class Title	Anchorage	Fairbanks	Juneau	Others	Total
Education Administrator II	0	0	1	0	1
Education Associate II	0	0	1	0	1
Education Associate III	0	0	1	0	1
Education Program Assistant	0	0	2	0	2
Totals	0	0	5	0	5

Component Detail All Funds
Department of Education and Early Development

Component: Teacher Certification (1240)

Non-Formula Component

RDU: Education Support and Administrative Services (677)

	FY2020 Actuals	FY2021 Conference Committee	FY2021 Authorized	FY2021 Management Plan	FY2022 Governor	FY2021 Management Plan vs FY2022 Governor	
71000 Personal Services	645.6	692.9	692.9	692.7	696.5	3.8	0.5%
72000 Travel	3.4	23.5	23.5	3.4	3.4	0.0	0.0%
73000 Services	212.8	212.9	212.9	233.2	233.2	0.0	0.0%
74000 Commodities	9.8	10.0	10.0	10.0	10.0	0.0	0.0%
75000 Capital Outlay	0.0	0.0	0.0	0.0	0.0	0.0	0.0%
77000 Grants, Benefits	0.0	0.0	0.0	0.0	0.0	0.0	0.0%
78000 Miscellaneous	0.0	0.0	0.0	0.0	0.0	0.0	0.0%
Totals	871.6	939.3	939.3	939.3	943.1	3.8	0.4%
Fund Sources:							
1005 GF/Prgm (DGF)	871.6	939.3	939.3	939.3	943.1	3.8	0.4%
Unrestricted General (UGF)	0.0	0.0	0.0	0.0	0.0	0.0	0.0%
Designated General (DGF)	871.6	939.3	939.3	939.3	943.1	3.8	0.4%
Other Funds	0.0	0.0	0.0	0.0	0.0	0.0	0.0%
Federal Funds	0.0	0.0	0.0	0.0	0.0	0.0	0.0%
Positions:							
Permanent Full Time	5	5	5	5	5	0	0.0%
Permanent Part Time	0	0	0	0	0	0	0.0%
Non Permanent	0	0	0	0	0	0	0.0%

Change Record Detail - Multiple Scenarios with Descriptions
Department of Education and Early Development

Component: Teacher Certification (1240)

RDU: Education Support and Administrative Services (677)

Scenario/Change Record Title	Trans Type	Totals	Personal Services	Travel	Services	Commodities	Capital Outlay	Grants, Benefits	Miscellaneous	Positions		NP
										PFT	PPT	
***** Changes From FY2021 Conference Committee To FY2021 Authorized *****												
Conference Committee												
1005 GF/Prgm	ConfCom	939.3	692.9	23.5	212.9	10.0	0.0	0.0	0.0	5	0	0
		939.3										
	Subtotal	939.3	692.9	23.5	212.9	10.0	0.0	0.0	0.0	5	0	0
***** Changes From FY2021 Authorized To FY2021 Management Plan *****												
Align Authority with Anticipated Expenditures												
	LIT	0.0	-0.2	-20.1	20.3	0.0	0.0	0.0	0.0	0	0	0
Transfer authority from personal services and travel to cover anticipated services costs. The remaining personal services and travel authority is sufficient to cover anticipated expenditures.												
	Subtotal	939.3	692.7	3.4	233.2	10.0	0.0	0.0	0.0	5	0	0
***** Changes From FY2021 Management Plan To FY2022 Governor *****												
FY2022 Salary Adjustments												
1005 GF/Prgm	SalAdj	3.8	3.8	0.0	0.0	0.0	0.0	0.0	0.0	0	0	0
FY2022 1% COLA for ASEA/General Government (GG/GP/GY/GZ): \$3.8												
	Totals	943.1	696.5	3.4	233.2	10.0	0.0	0.0	0.0	5	0	0

Line Item Detail (1676)
Department of Education and Early Development
Travel

Component: Teacher Certification (1240)

Line Number	Line Name		FY2020 Actuals	FY2021 Management Plan	FY2022 Governor
2000	Travel		3.4	3.4	3.4
Object Class	Servicing Agency	Explanation	FY2020 Actuals	FY2021 Management Plan	FY2022 Governor
2000 Travel Detail Totals			3.4	0.0	3.4
2000	In-State Employee Travel	In-State Transportation - Transportation costs for travel relating to administration, conventions and meetings, boards and commissions.	3.0	0.0	0.0
2002	Out of State Employee Travel	Out-of-State Transportation - Transportation costs for travel relating to administration, conventions and meetings, boards and commissions.	1.2	0.0	3.4
2006	Other Travel Costs	Refund received for travel cost relating to administration, conventions and meetings, boards and commissions.	-0.8	0.0	0.0

Line Item Detail (1676)
Department of Education and Early Development
Services

Component: Teacher Certification (1240)

Line Number	Line Name		FY2020 Actuals	FY2021 Management Plan	FY2022 Governor
3000	Services		212.8	233.2	233.2
Object Class	Servicing Agency	Explanation	FY2020 Actuals	FY2021 Management Plan	FY2022 Governor
3000 Services Detail Totals			212.8	0.0	233.2
3000	Education Services	Training, educational conferences, agency memberships, books and fees for work-related courses.	14.7	0.0	30.0
3001	Financial Services	Accounting, auditing, management/consulting services.	14.4	0.0	12.0
3003	Information Technology	Information Technology - Training, consulting, equipment and software leases, licensing, and maintenance.	8.1	0.0	0.0
3007	Advertising and Promotions	Advertising, promotions, and legal notices.	0.0	0.0	0.5
3009	Structure/Infrastructure/Land	Structure, infrastructure and land repairs, maintenance, rentals and leases.	0.2	0.0	0.5
3010	Equipment/Machinery	Machinery, furniture and equipment purchase, repairs, maintenance, rentals, and leases.	2.0	0.0	1.5
3011	Other Services	Other services, including strategic planning services, State Travel Office fees, and printer/copy machine supplies and maintenance.	0.0	0.0	3.9
3017	Inter-Agency Information Technology Non-Telecommunications	Admin - Department-wide Office of Information Technology chargeback for computer services (including Enterprise Productivity Rates and MICS charges for mainframe usage).	7.4	0.0	5.5
3018	Inter-Agency Information Technology Telecommunications	Admin - Department-wide Office of Information Technology chargeback for telecommunications,	9.2	0.0	8.0

Line Item Detail (1676)
Department of Education and Early Development
Services

Component: Teacher Certification (1240)

Object Class		Servicing Agency	Explanation	FY2020 Actuals	FY2021 Management Plan	FY2022 Governor
3000 Services Detail Totals				212.8	0.0	233.2
			Enterprise Productivity Rates, phone lines, and service requests.			
3021	Inter-Agency Mail	Admin - Department-wide	Pro-rated share of expenses relating to central mailroom support and services.	8.3	0.0	8.5
3024	Inter-Agency Legal		Department of Law legal services and regulations review.	28.5	0.0	0.0
3024	Inter-Agency Legal	Law - Department-wide	Department of Law legal services and regulations review.	0.0	0.0	30.0
3027	Inter-Agency Financial	Admin - Department-wide	Division of Finance - Computer services for State accounting (IRIS), payroll (HRM), and reporting (ALDER) systems.	6.1	0.0	0.0
3036	Inter-Agency Safety		Safety services, including background checks and fingerprinting.	64.7	0.0	0.0
3036	Inter-Agency Safety	PubSaf - Department-wide	Safety services, including background checks and fingerprinting.	0.0	0.0	75.0
3038	Inter-Agency Management/Consulting			49.2	0.0	0.0
3038	Inter-Agency Management/Consulting	E&ED - Administrative Services (157)	Administrative Services support to include, but not limited to: accounting; internal audit; budget preparation and management; federal and state financial reporting; procurement; human resources; and travel.	0.0	0.0	30.1
3038	Inter-Agency Management/Consulting	E&ED - Executive Administration (2736)	Executive Administration provides leadership and support to all aspects of Alaska's education system by effectively and efficiently managing department programs to facilitate	0.0	0.0	8.6

Line Item Detail (1676)
Department of Education and Early Development
Services

Component: Teacher Certification (1240)

Object Class	Servicing Agency	Explanation	FY2020 Actuals	FY2021 Management Plan	FY2022 Governor
3000 Services Detail Totals			212.8	0.0	233.2
3038	Inter-Agency Management/Consulting	E&ED - Information Services (2148) Information Services support for centralized information technology services to include, but not limited to: database; network and server support; website maintenance; computer and data security; computer and computer periphery support; and maintenance agreements.	0.0	0.0	19.1

Line Item Detail (1676)
Department of Education and Early Development
Commodities

Component: Teacher Certification (1240)

Line Number	Line Name		FY2020 Actuals	FY2021 Management Plan	FY2022 Governor
4000	Commodities		9.8	10.0	10.0
Object Class	Servicing Agency	Explanation	FY2020 Actuals	FY2021 Management Plan	FY2022 Governor
4000 Commodities Detail Totals			9.8	0.0	10.0
4000	Business	Business supplies including books and educational equipment and furniture; office supplies; desktop computers, printers and IT equipment less than \$5,000 per item; and subscriptions including electronic access to information.	9.2	0.0	10.0
4002	Household/Institutional	Cleaning, food, and other household supplies.	0.6	0.0	0.0

Revenue Detail (1681)
Department of Education and Early Development

Component: Teacher Certification (1240)

Revenue Type (OMB Fund Code) Revenue Source	Component	Comment	FY2020 Actuals	FY2021 Management Plan	FY2022 Governor
5005 GF/Prgm (1005 GF/Prgm)			871.6	0.0	943.1
5101 Program Receipts Public Protection - Licenses and Permits		Receipts collected from teacher certification, re-certification, and renewal fees.	871.4	0.0	943.1
5103 Program Receipts - Charges for Services		Program receipts for services.	0.1	0.0	0.0
5125 Program Receipts - Prior Year Reimbursement Recovery		Program receipts for prior year reimbursement recovery.	0.1	0.0	0.0

Inter-Agency Services (1682)
Department of Education and Early Development

Component: Teacher Certification (1240)

	FY2020 Actuals	FY2021 Management Plan	FY2022 Governor
Component Totals	31.0	0.0	184.8
With Department of Administration	31.0	0.0	22.0
With Department of Law	0.0	0.0	30.0
With Department of Public Safety	0.0	0.0	75.0
With Department of Education and Early Development	0.0	0.0	57.8

Object Class	Servicing Agency	Explanation	FY2020 Actuals	FY2021 Management Plan	FY2022 Governor
3017 Inter-Agency Information Technology Non-Telecommunications	Admin - Department-wide	Office of Information Technology chargeback for computer services (including Enterprise Productivity Rates and MICS charges for mainframe usage).	7.4	0.0	5.5
3018 Inter-Agency Information Technology Telecommunications	Admin - Department-wide	Office of Information Technology chargeback for telecommunications, Enterprise Productivity Rates, phone lines, and service requests.	9.2	0.0	8.0
3021 Inter-Agency Mail	Admin - Department-wide	Pro-rated share of expenses relating to central mailroom support and services.	8.3	0.0	8.5
3024 Inter-Agency Legal	Law - Department-wide	Department of Law legal services and regulations review.	0.0	0.0	30.0
3027 Inter-Agency Financial	Admin - Department-wide	Division of Finance - Computer services for State accounting (IRIS), payroll (HRM), and reporting (ALDER) systems.	6.1	0.0	0.0
3036 Inter-Agency Safety	PubSaf - Department-wide	Safety services, including background checks and fingerprinting.	0.0	0.0	75.0
3038 Inter-Agency Management/Consulting	E&ED - Administrative Services (157)	Administrative Services support to include, but not limited to: accounting; internal audit; budget preparation and management; federal and state financial reporting;	0.0	0.0	30.1

Inter-Agency Services (1682)
Department of Education and Early Development

Component: Teacher Certification (1240)

Object Class	Servicing Agency	Explanation	FY2020 Actuals	FY2021 Management Plan	FY2022 Governor
3038	Inter-Agency Management/Consulting	E&ED - Executive Administration (2736)	0.0	0.0	8.6
3038	Inter-Agency Management/Consulting	E&ED - Information Services (2148)	0.0	0.0	19.1

Personal Services Expenditure Detail
Department of Education and Early Development

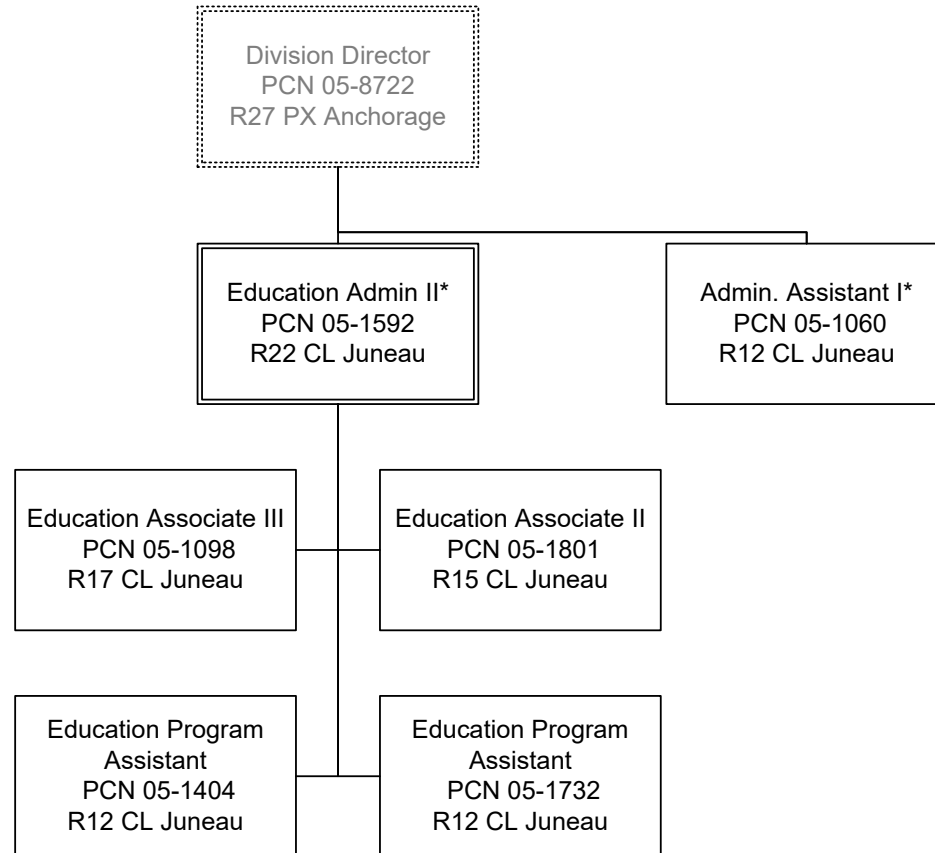
Scenario: FY2022 Governor (17280)
Component: Teacher Certification (1240)
RDU: Education Support and Administrative Services (677)

PCN	Job Class Title	Time Status	Retire Code	Barg Unit	Location	Salary Sched	Range / Step	Comp Months	Split / Count	Annual Salaries	COLA	Premium Pay	Annual Benefits	Total Costs	UGF Amount
05-1060	Administrative Assistant I	FT	A	GP	Juneau	205	12L	4.0	*	19,045	318	0	12,802	32,165	0
05-1098	Education Associate III	FT	A	GP	Juneau	205	17J / K	12.0		76,762	1,031	0	45,143	122,936	0
05-1404	Education Program Assistant	FT	A	GP	Juneau	205	12L	12.0		56,219	755	0	38,090	95,064	0
05-1592	Education Administrator II	FT	T	SS	Juneau	99	22N	12.0		123,372	0	0	41,975	165,347	0
05-1732	Education Program Assistant	FT	A	GP	Juneau	205	12B / C	12.0		43,869	589	0	33,851	78,309	0
05-1757	Program Coordinator I	FT	A	GP	Juneau	205	18J	2.0	*	13,309	210	0	7,701	21,220	0
05-1801	Education Associate II	FT	A	GP	Juneau	205	15G	12.0		62,615	841	0	40,286	103,742	0
05-8722	Division Director - Px	FT	T	XE	Anchorage	N00	27F	6.0	*	61,493	0	0	20,879	82,372	0
													Total Salary Costs:	456,684	
													Total COLA:	3,744	
													Total Premium Pay:	0	
													Total Benefits:	240,727	
													Total Pre-Vacancy:	701,155	
													Minus Vacancy Adjustment of 0.66%:	(4,655)	
													Total Post-Vacancy:	696,500	
													Plus Lump Sum Premium Pay:	0	
													Personal Services Line 100:	696,500	

PCN Funding Sources:	Pre-Vacancy	Post-Vacancy	Percent
1005 General Fund/Program Receipts	701,155	696,500	100.00%
Total PCN Funding:	701,155	696,500	100.00%

Note: If a position is split, an asterisk (*) will appear in the Split/Count column. If the split position is also counted in the component, two asterisks (**) will appear in this column. [No valid job title] appearing in the Job Class Title indicates that the PCN has an invalid class code or invalid range for the class code effective date of this scenario.

State of Alaska
Department of Education & Early Development
Teacher Certification (1240)
FY2022 Governor Organization Chart



* PCN 05-1757 is supervised by PCN 05-1637 in the Student and School Achievement component.

