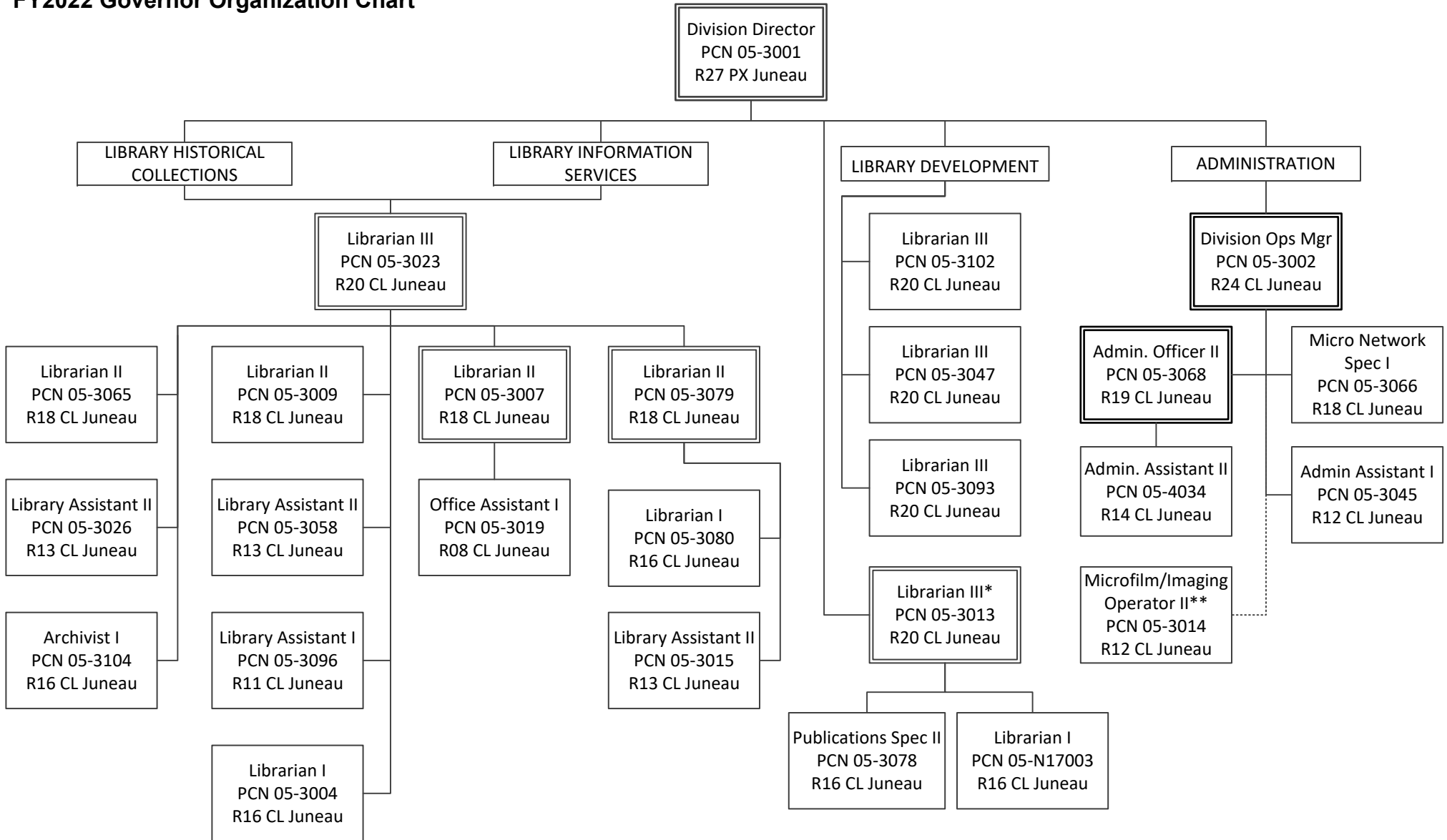


**State of Alaska**  
**Department of Education and Early Development**  
**Alaska State Libraries, Archives and Museums**  
**Library Operations (208)**  
**FY2022 Governor Organization Chart**



\* PCN 05-3013 also supervises PCN 05-3003 in the Online with Libraries (OWL) component.

\*\* PCN 05-3014 is supervised by PCN 05-3510 in the Archives component.