

# **State of Alaska FY2022 Governor's Operating Budget**

## **Department of Fish and Game Sport Fisheries Component Budget Summary**

**Component: Sport Fisheries**

**Contribution to Department's Mission**

See RDU for contribution to the department's mission.

**Core Services**

- Fisheries Management: The division ensures the sustained use of Alaska's recreational fisheries while optimizing social and economic benefits.
- Fisheries Research: The division promotes excellence in fisheries research.
- Fisheries Enhancement: The division diversifies recreational fishing opportunities via supplemental production of hatchery-reared fish.
- Angler Access: The division protects and improves public access to recreational fisheries resources.
- Information and Education Services: The division informs and educates the public about recreational fishing with an emphasis on exceptional customer service.
- Fish Habitat: The division conserves habitat to sustain recreational fisheries resources.
- Workforce Support: The division provides exceptional support to our workforce to attain the division's vision and goals.

**Major Component Accomplishments in 2020**

See RDU for accomplishments.

**Key Component Challenges**

See RDU for key component challenges.

**Significant Changes in Results to be Delivered in FY2022**

See RDU for changes in results delivered.

**Statutory and Regulatory Authority**

**Statutory and Regulatory Authority - Direct**

|                        |   |
|------------------------|---|
| AS 16.05.010-16.10.800 | Fish and Game Code; Fisheries and Fishing Regulations |
| AS 16.20               | Conservation and Protection of Alaska Fish and Game   |
| 5 AAC 39.222 and 223   | Sustainable Salmon and Escapement Goal Policies       |
| 5 AAC 47.001-74.995    | Sport Fishing Seasons, Bag, and Possession Limits     |
| 5 AAC 75.001-75.995    | Statewide Provisions                                  |
| 5 AAC 95.010-990       | Protection of Fish and Game Habitat                   |

**Statutory and Regulatory Authority – Comment**

|           |   |
|-----------|---|
| 18 AAC 70 | Water Quality Standards                       |
| 18 AAC 75 | Oil and Hazardous Substance Pollution Control |

**Related Federal Authority**

|                    |                                       |
|--------------------|---------------------------------------|
| 16 USC §§ 661-667e | Fish and Wildlife Coordination Act    |
| 16 U.S.C. 777-777k | Federal Aid in Sport Fish Restoration |
| 50 CFR PRT.80      | Administrative Requirements           |

**Contact Information**

**Contact Information**

**Contact:** David Rutz, Director  
**Phone:** (907) 267-2150  
**E-mail:** david.rutz@alaska.gov

| Sport Fisheries<br>Personal Services Information |                              |                    |                                |                   |
|--|------------------------------|--------------------|--------------------------------|-------------------|
| Authorized Positions                             |                              |                    | Personal Services Costs        |                   |
|  | FY2021<br>Management<br>Plan | FY2022<br>Governor |                                |                   |
| Full-time  | 161                          | 160                | Annual Salaries                | 15,710,828        |
| Part-time  | 142                          | 143                | COLA                           | 107,753           |
| Nonpermanent                                     | 0                            | 0                  | Premium Pay                    | 659,833           |
|  |                              |                    | Annual Benefits                | 9,883,508         |
|  |                              |                    | Less 0.34% Vacancy Factor      | (88,722)          |
|  |                              |                    | Lump Sum Premium Pay           | 0                 |
| <b>Totals</b>                                    | <b>303</b>                   | <b>303</b>         | <b>Total Personal Services</b> | <b>26,273,200</b> |

| Position Classification Summary |           |           |        |        |       |
|---------------------------------|-----------|-----------|--------|--------|-------|
| Job Class Title                 | Anchorage | Fairbanks | Juneau | Others | Total |
| Accountant III                  | 0         | 0         | 1      | 0      | 1     |
| Accounting Technician I         | 2         | 1         | 1      | 0      | 4     |
| Accounting Technician II        | 0         | 0         | 1      | 0      | 1     |
| Accounting Technician III       | 0         | 0         | 1      | 0      | 1     |
| Administrative Assistant II     | 2         | 1         | 1      | 0      | 4     |
| Administrative Officer I        | 1         | 1         | 1      | 0      | 3     |
| Administrative Officer II       | 1         | 0         | 0      | 0      | 1     |
| Admn OPS Mgr I                  | 0         | 0         | 1      | 0      | 1     |
| Analyst/Programmer IV           | 3         | 0         | 0      | 0      | 3     |
| Analyst/Programmer V            | 1         | 0         | 0      | 0      | 1     |
| Asst Dir F&G                    | 1         | 0         | 1      | 0      | 2     |
| Biometrician I                  | 0         | 1         | 0      | 0      | 1     |
| Biometrician II                 | 1         | 0         | 0      | 0      | 1     |
| Biometrician III                | 2         | 0         | 1      | 1      | 4     |
| Biometrician IV                 | 1         | 0         | 0      | 0      | 1     |
| Division Director - Px          | 1         | 0         | 0      | 0      | 1     |
| Division Operations Manager     | 0         | 0         | 1      | 0      | 1     |
| Education Associate III         | 0         | 1         | 0      | 0      | 1     |
| Engineer II, Dec                | 1         | 0         | 0      | 0      | 1     |
| Fish & Game Coordinator         | 2         | 1         | 2      | 0      | 5     |
| Fish & Game Program Technician  | 1         | 0         | 1      | 6      | 8     |
| Fish & Wildlife Technician II   | 2         | 6         | 5      | 57     | 70    |
| Fish & Wildlife Technician III  | 2         | 7         | 4      | 45     | 58    |
| Fish & Wildlife Technician IV   | 0         | 1         | 0      | 1      | 2     |
| Fish & Wildlife Technician V    | 0         | 1         | 0      | 0      | 1     |
| Fisheries Scientist I           | 1         | 0         | 0      | 0      | 1     |
| Fisheries Scientist II          | 1         | 0         | 0      | 0      | 1     |
| Fishery Biologist I             | 1         | 1         | 2      | 10     | 14    |
| Fishery Biologist II            | 2         | 5         | 5      | 18     | 30    |
| Fishery Biologist III           | 5         | 6         | 4      | 16     | 31    |
| Fishery Biologist IV            | 5         | 2         | 2      | 1      | 10    |
| Gis Analyst II                  | 2         | 0         | 0      | 0      | 2     |
| Gis Analyst III                 | 1         | 0         | 1      | 0      | 2     |
| Habitat Biologist I             | 0         | 1         | 0      | 0      | 1     |
| Habitat Biologist II            | 3         | 0         | 1      | 0      | 4     |
| Habitat Biologist III           | 4         | 0         | 1      | 0      | 5     |

| <b>Position Classification Summary</b> |                  |                  |               |               |              |
|--|------------------|------------------|---------------|---------------|--------------|
| <b>Job Class Title</b>                 | <b>Anchorage</b> | <b>Fairbanks</b> | <b>Juneau</b> | <b>Others</b> | <b>Total</b> |
| Habitat Biologist IV                   | 1                | 0                | 0             | 0             | 1            |
| Information Officer II                 | 1                | 1                | 0             | 0             | 2            |
| Information System Coordinator         | 1                | 0                | 0             | 0             | 1            |
| Librarian I                            | 1                | 0                | 0             | 0             | 1            |
| Mts/Bfc Jrny I                         | 0                | 0                | 0             | 2             | 2            |
| Office Assistant I                     | 1                | 0                | 0             | 1             | 2            |
| Office Assistant II                    | 3                | 0                | 0             | 0             | 3            |
| Program Coordinator I                  | 1                | 0                | 0             | 0             | 1            |
| Program Coordinator II                 | 3                | 0                | 0             | 0             | 3            |
| Project Assistant                      | 3                | 0                | 0             | 0             | 3            |
| Publications Specialist II             | 1                | 0                | 0             | 0             | 1            |
| Publications Specialist III            | 1                | 0                | 0             | 0             | 1            |
| Publications Technician II             | 0                | 1                | 0             | 0             | 1            |
| Research Analyst II                    | 0                | 0                | 1             | 0             | 1            |
| Research Analyst III                   | 2                | 0                | 0             | 0             | 2            |
| <b>Totals</b>                          | <b>68</b>        | <b>38</b>        | <b>39</b>     | <b>158</b>    | <b>303</b>   |

**Component Detail All Funds**  
**Department of Fish and Game**

**Component:** Sport Fisheries (464)  
**RDU:** Sport Fisheries (145)

Non-Formula Component

|                                   | FY2020 Actuals  | FY2021 Conference Committee | FY2021 Authorized | FY2021 Management Plan | FY2022 Governor | FY2021 Management Plan vs FY2022 Governor |              |
|-----------------------------------|-----------------|-----------------------------|-------------------|------------------------|-----------------|---|--------------|
| 71000 Personal Services           | 24,762.7        | 26,163.5                    | 26,163.5          | 26,163.5               | 26,273.2        | 109.7                                     | 0.4%         |
| 72000 Travel                      | 345.7           | 329.3                       | 329.3             | 329.3                  | 329.3           | 0.0                                       | 0.0%         |
| 73000 Services                    | 12,030.1        | 13,829.3                    | 13,679.3          | 13,679.3               | 13,179.3        | -500.0                                    | -3.7%        |
| 74000 Commodities                 | 1,728.7         | 2,143.5                     | 2,143.5           | 2,143.5                | 2,143.5         | 0.0                                       | 0.0%         |
| 75000 Capital Outlay              | 189.4           | 711.5                       | 711.5             | 711.5                  | 711.5           | 0.0                                       | 0.0%         |
| 77000 Grants, Benefits            | 0.0             | 0.0                         | 0.0               | 0.0                    | 0.0             | 0.0                                       | 0.0%         |
| 78000 Miscellaneous               | 0.0             | 0.0                         | 0.0               | 0.0                    | 0.0             | 0.0                                       | 0.0%         |
| <b>Totals</b>                     | <b>39,056.6</b> | <b>43,177.1</b>             | <b>43,027.1</b>   | <b>43,027.1</b>        | <b>42,636.8</b> | <b>-390.3</b>                             | <b>-0.9%</b> |
| <b>Fund Sources:</b>              |                 |                             |                   |                        |                 |   |              |
| 1001 CBR Fund (UGF)               | 0.0             | 491.3                       | 341.3             | 341.3                  | 0.0             | -341.3                                    | -100.0%      |
| 1002 Fed Rcpts (Fed)              | 16,244.0        | 17,416.0                    | 17,416.0          | 17,416.0               | 17,470.8        | 54.8                                      | 0.3%         |
| 1003 G/F Match (UGF)              | 525.4           | 394.9                       | 394.9             | 394.9                  | 527.7           | 132.8                                     | 33.6%        |
| 1004 Gen Fund (UGF)               | 1,513.0         | 1,079.0                     | 1,079.0           | 1,079.0                | 1,295.0         | 216.0                                     | 20.0%        |
| 1007 I/A Rcpts (Other)            | 398.3           | 699.6                       | 699.6             | 699.6                  | 700.5           | 0.9                                       | 0.1%         |
| 1024 Fish/Game (Other)            | 18,387.3        | 18,889.0                    | 18,889.0          | 18,889.0               | 18,932.5        | 43.5                                      | 0.2%         |
| 1061 CIP Rcpts (Other)            | 822.7           | 2,174.8                     | 2,174.8           | 2,174.8                | 2,177.2         | 2.4                                       | 0.1%         |
| 1108 Stat Desig (Other)           | 665.9           | 1,532.5                     | 1,532.5           | 1,532.5                | 1,533.1         | 0.6                                       | 0.0%         |
| 1199 SFEntAcct (Other)            | 500.0           | 500.0                       | 500.0             | 500.0                  | 0.0             | -500.0                                    | -100.0%      |
| <b>Unrestricted General (UGF)</b> | <b>2,038.4</b>  | <b>1,965.2</b>              | <b>1,815.2</b>    | <b>1,815.2</b>         | <b>1,822.7</b>  | <b>7.5</b>                                | <b>0.4%</b>  |
| <b>Designated General (DGF)</b>   | <b>0.0</b>      | <b>0.0</b>                  | <b>0.0</b>        | <b>0.0</b>             | <b>0.0</b>      | <b>0.0</b>                                | <b>0.0%</b>  |
| <b>Other Funds</b>                | <b>20,774.2</b> | <b>23,795.9</b>             | <b>23,795.9</b>   | <b>23,795.9</b>        | <b>23,343.3</b> | <b>-452.6</b>                             | <b>-1.9%</b> |
| <b>Federal Funds</b>              | <b>16,244.0</b> | <b>17,416.0</b>             | <b>17,416.0</b>   | <b>17,416.0</b>        | <b>17,470.8</b> | <b>54.8</b>                               | <b>0.3%</b>  |
| <b>Positions:</b>                 |                 |                             |                   |                        |                 |   |              |
| Permanent Full Time               | 164             | 165                         | 165               | 161                    | 160             | -1  | -0.6%        |
| Permanent Part Time               | 142             | 142                         | 142               | 142                    | 143             | 1   | 0.7%         |
| Non Permanent                     | 0               | 0                           | 0                 | 0                      | 0               | 0   | 0.0%         |

**Change Record Detail - Multiple Scenarios with Descriptions**  
**Department of Fish and Game**

**Component:** Sport Fisheries (464)  
**RDU:** Sport Fisheries (145)

| Scenario/Change Record Title  | Trans Type | Totals   | Personal Services | Travel | Services | Commodities | Capital Outlay | Grants, Benefits | Miscellaneous | Positions |     | NP |
|---|------------|----------|-------------------|--------|----------|-------------|----------------|------------------|---------------|-----------|-----|----|
|   |            |          |                   |        |          |             |                |                  |               | PFT       | PPT |    |
| ***** Changes From FY2021 Conference Committee To FY2021 Authorized ***** |            |          |                   |        |          |             |                |                  |               |           |     |    |
| <b>Conference Committee</b>   |            |          |                   |        |          |             |                |                  |               |           |     |    |
|   | ConfCom    | 42,677.1 | 26,163.5          | 329.3  | 13,329.3 | 2,143.5     | 711.5          | 0.0              | 0.0           | 165       | 142 | 0  |
| 1001 CBR Fund   |            | 491.3    |                   |        |          |             |                |                  |               |           |     |    |
| 1002 Fed Rcpts  |            | 17,416.0 |                   |        |          |             |                |                  |               |           |     |    |
| 1003 G/F Match  |            | 394.9    |                   |        |          |             |                |                  |               |           |     |    |
| 1004 Gen Fund   |            | 1,079.0  |                   |        |          |             |                |                  |               |           |     |    |
| 1007 I/A Rcpts  |            | 699.6    |                   |        |          |             |                |                  |               |           |     |    |
| 1024 Fish/Game  |            | 18,889.0 |                   |        |          |             |                |                  |               |           |     |    |
| 1061 CIP Rcpts  |            | 2,174.8  |                   |        |          |             |                |                  |               |           |     |    |
| 1108 Stat Desig   |            | 1,532.5  |                   |        |          |             |                |                  |               |           |     |    |
| <b>FY2021 Sport Fish Operations Sec27 Ch8 SLA2020 P91 L28 (HB205)</b>     |            |          |                   |        |          |             |                |                  |               |           |     |    |
|   | ConfC(L)   | 500.0    | 0.0               | 0.0    | 500.0    | 0.0         | 0.0            | 0.0              | 0.0           | 0         | 0   | 0  |
| 1199 SFEntAcct  |            | 500.0    |                   |        |          |             |                |                  |               |           |     |    |

DEPARTMENT OF FISH AND GAME. After the appropriation made in sec. 38(r) of this Act, the remaining balance of the Alaska sport fishing enterprise account (AS 16.05.130(e)) in the fish and game fund (AS 16.05.100), not to exceed \$500,000, is appropriated to the Department of Fish and Game for sport fish operations for the fiscal year ending June 30, 2021.

**Reduce License Modernization Funding**

|               |      |        |     |     |        |     |     |     |     |   |   |   |
|---------------|------|--------|-----|-----|--------|-----|-----|-----|-----|---|---|---|
|               | Veto | -150.0 | 0.0 | 0.0 | -150.0 | 0.0 | 0.0 | 0.0 | 0.0 | 0 | 0 | 0 |
| 1001 CBR Fund |      | -150.0 |     |     |        |     |     |     |     |   |   |   |

This is a legislative restoration of FY2021 Governor's budget reduction.

Reduce this funding source support for the Department's license modernization efforts due to alternate available funding.

Over the last five years the department has been working on efforts to modernize the process of obtaining licenses and permits necessary for a wide array of harvesting opportunities. This project will allow anglers and hunters to fully utilize any personal electronic devices to purchase licenses, obtain permits, record and report their harvest, as well as access regulations and announcements.

|                 |  |                 |                 |              |                 |                |              |            |            |            |            |          |
|-----------------|--|-----------------|-----------------|--------------|-----------------|----------------|--------------|------------|------------|------------|------------|----------|
| <b>Subtotal</b> |  | <b>43,027.1</b> | <b>26,163.5</b> | <b>329.3</b> | <b>13,679.3</b> | <b>2,143.5</b> | <b>711.5</b> | <b>0.0</b> | <b>0.0</b> | <b>165</b> | <b>142</b> | <b>0</b> |
|-----------------|--|-----------------|-----------------|--------------|-----------------|----------------|--------------|------------|------------|------------|------------|----------|

\*\*\*\*\* Changes From FY2021 Authorized To FY2021 Management Plan \*\*\*\*\*

**Change Fish & Wildlife Technician II (11-1060) and Fishery Biologist I/II (11-4200) from Full-Time to Part-Time**

|  |        |     |     |     |     |     |     |     |     |    |   |   |
|--|--------|-----|-----|-----|-----|-----|-----|-----|-----|----|---|---|
|  | PosAdj | 0.0 | 0.0 | 0.0 | 0.0 | 0.0 | 0.0 | 0.0 | 0.0 | -2 | 2 | 0 |
|--|--------|-----|-----|-----|-----|-----|-----|-----|-----|----|---|---|

Change full-time Fish and Wildlife Technician II (11-1060), range 9, located in Juneau and full-time flex Fishery Biologist I/II (11-4200), ranges 14/16, located in Dillingham to part-time for an adjustment in the workload.

**Delete Vacant Positions (11-1874), (11-4056), (11-4133), and (11-4351) No Longer Needed**

**Change Record Detail - Multiple Scenarios with Descriptions**  
**Department of Fish and Game**

**Component:** Sport Fisheries (464)  
**RDU:** Sport Fisheries (145)

| Scenario/Change Record Title   | Trans Type | Totals          | Personal Services | Travel       | Services        | Commodities    | Capital Outlay | Grants, Benefits | Miscellaneous | Positions  |            | NP       |
|--|------------|-----------------|-------------------|--------------|-----------------|----------------|----------------|------------------|---------------|------------|------------|----------|
|  |            |                 |                   |              |                 |                |                |                  |               | PFT        | PPT        |          |
|  | PosAdj     | 0.0             | 0.0               | 0.0          | 0.0             | 0.0            | 0.0            | 0.0              | 0.0           | -1         | -3         | 0        |
| Delete vacant full-time Information Officer II (11-1874), range 17, located in Juneau and three vacant part-time Fish & Wildlife Technician III's (11-4056, 11-4133, and 11-4351), range 11, located in Sitka, Soldotna, and Anchorage. These positions are no longer needed based on anticipated workloads. |            |                 |                   |              |                 |                |                |                  |               |            |            |          |
| <b>Change Maintenance Specialist Journeyman I (11-5320) from Full-Time to Part-Time for Workload Adjustment</b>  |            |                 |                   |              |                 |                |                |                  |               |            |            |          |
|  | PosAdj     | 0.0             | 0.0               | 0.0          | 0.0             | 0.0            | 0.0            | 0.0              | 0.0           | -1         | 1          | 0        |
| Change full-time Maintenance Specialist Journeyman I (11-5320), range 53, located in Palmer, to part-time for an adjustment in the workload.   |            |                 |                   |              |                 |                |                |                  |               |            |            |          |
| <b>Subtotal</b>  |            | <b>43,027.1</b> | <b>26,163.5</b>   | <b>329.3</b> | <b>13,679.3</b> | <b>2,143.5</b> | <b>711.5</b>   | <b>0.0</b>       | <b>0.0</b>    | <b>161</b> | <b>142</b> | <b>0</b> |
| ***** Changes From FY2021 Management Plan To FY2022 Governor *****   |            |                 |                   |              |                 |                |                |                  |               |            |            |          |
| <b>Reverse FY2021 Sport Fish Operations Sec27 Ch8 SLA2020 P91 L28 (HB205)</b>  |            |                 |                   |              |                 |                |                |                  |               |            |            |          |
|  | OTI        | -500.0          | 0.0               | 0.0          | -500.0          | 0.0            | 0.0            | 0.0              | 0.0           | 0          | 0          | 0        |
| 1199 SFEntAcct   |            | -500.0          |                   |              |                 |                |                |                  |               |            |            |          |
| Reverse language section appropriation made in SLA2020.  |            |                 |                   |              |                 |                |                |                  |               |            |            |          |
| <b>FY2022 Salary Adjustments</b>   |            |                 |                   |              |                 |                |                |                  |               |            |            |          |
|  | SalAdj     | 109.7           | 109.7             | 0.0          | 0.0             | 0.0            | 0.0            | 0.0              | 0.0           | 0          | 0          | 0        |
| 1002 Fed Rcpts   |            | 54.8            |                   |              |                 |                |                |                  |               |            |            |          |
| 1003 G/F Match   |            | 1.2             |                   |              |                 |                |                |                  |               |            |            |          |
| 1004 Gen Fund  |            | 6.3             |                   |              |                 |                |                |                  |               |            |            |          |
| 1007 I/A Rcpts   |            | 0.9             |                   |              |                 |                |                |                  |               |            |            |          |
| 1024 Fish/Game   |            | 43.5            |                   |              |                 |                |                |                  |               |            |            |          |
| 1061 CIP Rcpts   |            | 2.4             |                   |              |                 |                |                |                  |               |            |            |          |
| 1108 Stat Desig  |            | 0.6             |                   |              |                 |                |                |                  |               |            |            |          |
| FY2022 1% COLA for ASEA/General Government (GG/GP/GY/GZ): \$109.7  |            |                 |                   |              |                 |                |                |                  |               |            |            |          |
| <b>Change Fish &amp; Game Program Technician (11-4169) from Full-Time to Part-Time for Workload Adjustment</b>   |            |                 |                   |              |                 |                |                |                  |               |            |            |          |
|  | PosAdj     | 0.0             | 0.0               | 0.0          | 0.0             | 0.0            | 0.0            | 0.0              | 0.0           | -1         | 1          | 0        |
| Change full-time Fish & Game Program Technician (11-4169), range 12, located in Dillingham, to part-time for an adjustment in the workload.  |            |                 |                   |              |                 |                |                |                  |               |            |            |          |
| <b>Fund Source Adjustment of CBRF to UGF</b>   |            |                 |                   |              |                 |                |                |                  |               |            |            |          |
|  | FndChg     | 0.0             | 0.0               | 0.0          | 0.0             | 0.0            | 0.0            | 0.0              | 0.0           | 0          | 0          | 0        |
| 1001 CBR Fund  |            | -341.3          |                   |              |                 |                |                |                  |               |            |            |          |
| 1003 G/F Match   |            | 131.6           |                   |              |                 |                |                |                  |               |            |            |          |
| 1004 Gen Fund  |            | 209.7           |                   |              |                 |                |                |                  |               |            |            |          |



**Change Record Detail - Multiple Scenarios with Descriptions**  
**Department of Fish and Game**

**Component:** Sport Fisheries (464)  
**RDU:** Sport Fisheries (145)

| Scenario/Change<br>Record Title | Trans<br>Type | Totals   | Personal<br>Services | Travel | Services | Commodities | Capital Outlay | Grants, Benefits | Miscellaneous | Positions |     |    |
|---------------------------------|---------------|----------|----------------------|--------|----------|-------------|----------------|------------------|---------------|-----------|-----|----|
|                                 |               |          |                      |        |          |             |                |                  |               | PFT       | PPT | NP |
|                                 | Totals        | 42,636.8 | 26,273.2             | 329.3  | 13,179.3 | 2,143.5     | 711.5          | 0.0              | 0.0           | 160       | 143 | 0  |

**Line Item Detail (1676)**  
**Department of Fish and Game**  
**Travel**

**Component:** Sport Fisheries (464)

| <b>Line Number</b>               | <b>Line Name</b>                 |   | <b>FY2020 Actuals</b> | <b>FY2021 Management Plan</b> | <b>FY2022 Governor</b> |
|----------------------------------|----------------------------------|---|-----------------------|-------------------------------|------------------------|
| 2000                             | Travel                           |   | 345.7                 | 329.3                         | 329.3                  |
| <b>Object Class</b>              | <b>Servicing Agency</b>          | <b>Explanation</b>  | <b>FY2020 Actuals</b> | <b>FY2021 Management Plan</b> | <b>FY2022 Governor</b> |
| <b>2000 Travel Detail Totals</b> |                                  |   | <b>345.7</b>          | <b>329.3</b>                  | <b>329.3</b>           |
| 2000                             | In-State Employee Travel         | In-state employee travel including transportation and lodging                 | 260.5                 | 248.2                         | 248.2                  |
| 2001                             | In-State Non-Employee Travel     | In-state non-employee travel including transportation and lodging             | 9.0                   | 8.5                           | 8.5                    |
| 2002                             | Out of State Employee Travel     | Out-of-state employee travel including transportation and lodging             | 25.0                  | 23.8                          | 23.8                   |
| 2003                             | Out of State Non-Employee Travel | Out-of-state non-employee travel including transportation and lodging         | 1.4                   | 1.4                           | 1.4                    |
| 2005                             | Moving Costs                     | Move costs including transferring household goods, transportation and lodging | 49.7                  | 47.3                          | 47.3                   |
| 2006                             | Other Travel Costs               | Other travel fees including cash advances                                     | 0.1                   | 0.1                           | 0.1                    |

**Line Item Detail (1676)**  
**Department of Fish and Game**  
**Services**

**Component:** Sport Fisheries (464)

| Line Number                        | Line Name                     |   | FY2020 Actuals  | FY2021 Management Plan | FY2022 Governor |
|------------------------------------|-------------------------------|---|-----------------|------------------------|-----------------|
| 3000                               | Services                      |   | 12,030.1        | 13,679.3               | 13,179.3        |
| Object Class                       | Servicing Agency              | Explanation   | FY2020 Actuals  | FY2021 Management Plan | FY2022 Governor |
| <b>3000 Services Detail Totals</b> |                               |   | <b>12,030.1</b> | <b>13,679.3</b>        | <b>13,179.3</b> |
| 3000                               | Education Services            | Training/conference fees and memberships  | 61.2            | 69.6                   | 67.0            |
| 3001                               | Financial Services            | Management/consulting services and interest expenses<br>HB39 - Bankcard Service Fees Reimbursed | 3.5             | 4.0                    | 4.0             |
| 3003                               | Information Technology        | Information technology training and consulting services and software licensing and maintenance  | 244.5           | 278.0                  | 267.8           |
| 3004                               | Telecommunications            | Television, long distance, data/network and cell phone services                                 | 199.3           | 267.0                  | 218.0           |
| 3005                               | Health Services               | Scuba diving equipment  | 0.1             | 0.1                    | 0.1             |
| 3006                               | Delivery Services             | Freight and postage   | 366.1           | 416.3                  | 401.0           |
| 3007                               | Advertising and Promotions    | Classified newspaper, radio, and television advertisements                                      | 7.0             | 8.0                    | 7.6             |
| 3008                               | Utilities                     | Electric, water, sewage, disposal and heating services  | 197.4           | 224.0                  | 216.0           |
| 3009                               | Structure/Infrastructure/Land | Appraisal, architect, engineer services and structure/land maintenance and rentals              | 312.3           | 355.0                  | 342.0           |
| 3010                               | Equipment/Machinery           | Equipment rental, maintenance services and equipment operator charges                           | 117.4           | 133.0                  | 128.0           |
| 3011                               | Other Services                | Printing, copy services, transportation and consulting services. Environmental and              | 2,819.2         | 3,206.0                | 3,088.5         |

**Line Item Detail (1676)**  
**Department of Fish and Game**  
**Services**

**Component:** Sport Fisheries (464)

| Object Class                       |  | Servicing Agency                       | Explanation   | FY2020 Actuals  | FY2021<br>Management Plan | FY2022 Governor |
|------------------------------------|--|--|---|-----------------|---------------------------|-----------------|
| <b>3000 Services Detail Totals</b> |  |  |   | <b>12,030.1</b> | <b>13,679.3</b>           | <b>13,179.3</b> |
| economic development fees          |  |  |   |                 |                           |                 |
| 3012                               | Inter-Agency Federal Indirect Rate Allocation              | FishGm - Administrative Services (479) | Federal Indirect paid to Division of Admin Service via SB250 Reimbursable Service Agreement | 2,641.8         | 3,004.0                   | 3,310.0         |
| 3015                               | Inter-Agency Conservation/Environmental                    |  | RSAs Others   | 0.0             | 361.0                     | 441.5           |
| 3015                               | Inter-Agency Conservation/Environmental                    | Courts - Department-wide               | RSA with Alaska Court System  | 2.4             | 2.4                       | 2.4             |
| 3015                               | Inter-Agency Conservation/Environmental                    | FishGm - Administrative Services (479) | RSAs within Department of Fish and Game   | 2,225.6         | 2,225.6                   | 1,840.3         |
| 3015                               | Inter-Agency Conservation/Environmental                    | NatRes - Department-wide               | RSAs with Department of Natural Resources   | 474.4           | 474.4                     | 474.4           |
| 3015                               | Inter-Agency Conservation/Environmental                    | Trans - Department-wide                | RSAs with Department of Transportation  | 123.3           | 123.3                     | 123.3           |
| 3015                               | Inter-Agency Conservation/Environmental                    | Univ - Department-wide                 | RSAs with the University of Alaska  | 94.4            | 94.4                      | 94.4            |
| 3017                               | Inter-Agency Information Technology Non-Telecommunications | Admin - Department-wide                | Computer Services   | 190.0           | 216.0                     | 0.0             |
| 3019                               | Inter-Agency Storage                                       | Admin - Department-wide                | Storage   | 0.1             | 0.1                       | 0.1             |
| 3021                               | Inter-Agency Mail  | Admin - Department-wide                | Centralized mail services chargeback  | 13.0            | 15.0                      | 14.0            |
| 3023                               | Inter-Agency Building Leases                               | Admin - Department-wide                | Leases  | 1,140.2         | 1,299.0                   | 1,271.0         |
| 3023                               | Inter-Agency Building Leases                               | Trans - Department-wide                | Leases  | 19.9            | 20.0                      | 14.0            |
| 3024                               | Inter-Agency Legal   | Law - Department-wide                  | RSAs with Department of Law   | 12.9            | 15.0                      | 15.0            |
| 3026                               | Inter-Agency Insurance                                     | Admin - Department-wide                | Risk management, and property insurance   | 142.3           | 162.0                     | 155.8           |
| 3027                               | Inter-Agency Financial                                     | Admin - Department-wide                | State payroll (HRM) and accounting (IRIS & ALDER) systems chargeback                        | 48.9            | 56.0                      | 53.0            |
| 3028                               | Inter-Agency Americans with                                | Admin - Department-wide                | Americans with Disabilities Act   | 2.3             | 2.0                       | 0.0             |

**Line Item Detail (1676)**  
**Department of Fish and Game**  
**Services**

**Component:** Sport Fisheries (464)

| Object Class                       | Servicing Agency                   | Explanation  | FY2020 Actuals  | FY2021<br>Management Plan | FY2022 Governor |
|------------------------------------|------------------------------------|--|-----------------|---------------------------|-----------------|
| <b>3000 Services Detail Totals</b> |                                    |  | <b>12,030.1</b> | <b>13,679.3</b>           | <b>13,179.3</b> |
|                                    |                                    | Disabilities Act Compliance (ADA) chargeback         |                 |                           |                 |
| 3037                               | State Equipment Fleet              | Trans - Department-wide State Equipment Fleet        | 407.4           | 463.0                     | 446.0           |
| 3038                               | Inter-Agency Management/Consulting | Admin - Department-wide (Dept) Management/Consulting | 18.0            | 20.0                      | 19.0            |
| 7001                               | Grants                             | Federal sub-recipient pass-thru grants               | 9.7             | 11.0                      | 11.0            |
| 7003                               | Sub-Recipient Pass-Through Grants  | Sub-Recipient Pass-Through Grants                    | 135.5           | 154.1                     | 154.1           |

**Line Item Detail (1676)**  
**Department of Fish and Game**  
**Commodities**

**Component:** Sport Fisheries (464)

| Line Number                           | Line Name                 |  | FY2020 Actuals | FY2021 Management Plan | FY2022 Governor |
|---------------------------------------|---------------------------|--|----------------|------------------------|-----------------|
| 4000                                  | Commodities               |  | 1,728.7        | 2,143.5                | 2,143.5         |
| Object Class                          | Servicing Agency          | Explanation  | FY2020 Actuals | FY2021 Management Plan | FY2022 Governor |
| <b>4000 Commodities Detail Totals</b> |                           |  | <b>1,728.7</b> | <b>2,143.5</b>         | <b>2,143.5</b>  |
| 4000                                  | Business                  | Books, furniture, tools, business supplies and information technology equipment <\$5,000 | 494.8          | 613.5                  | 613.5           |
| 4001                                  | Agricultural              | Agricultural Supplies  | 1.6            | 2.0                    | 2.0             |
| 4002                                  | Household/Institutional   | Landscaping, food, and cleaning supplies   | 336.9          | 418.0                  | 418.0           |
| 4003                                  | Scientific and Medical    | Instruments, lab and non-lab supplies (Scientific and Medical)                           | 444.6          | 551.0                  | 551.0           |
| 4004                                  | Safety                    | Firearms, ammunition, and other safety supplies  | 18.1           | 22.4                   | 22.4            |
| 4005                                  | Building Materials        | Screws, lumber, nuts, bolts, and other building materials                                | 58.8           | 73.0                   | 73.0            |
| 4006                                  | Signs and Markers         | Signs and marker supplies  | 16.0           | 20.0                   | 20.0            |
| 4008                                  | Aggregate                 | Aggregate Materials  | 13.9           | 17.0                   | 17.0            |
| 4011                                  | Electrical                | Key-card readers, bulbs, batteries, and other electrical supplies                        | 8.5            | 10.5                   | 10.5            |
| 4012                                  | Plumbing                  | Heaters, faucets, tubing, and other plumbing supplies                                    | 2.1            | 3.0                    | 3.0             |
| 4013                                  | Lube Oils/Grease/Solvents | Marine and motor oil, fuel stabilizer, and other lube oils, grease and solvents          | 6.9            | 8.5                    | 8.5             |
| 4014                                  | Bottled Gas               | Propane, oxygen, and other bottled gases   | 9.9            | 12.2                   | 12.2            |
| 4015                                  | Parts and Supplies        | Parts and supplies   | 176.2          | 218.0                  | 218.0           |
| 4016                                  | Paint/Preservatives       | Paint and preservatives  | 6.1            | 8.0                    | 8.0             |

**Line Item Detail (1676)**  
**Department of Fish and Game**  
**Commodities**

**Component:** Sport Fisheries (464)

| Object Class                          | Servicing Agency            | Explanation  | FY2020 Actuals | FY2021<br>Management Plan | FY2022 Governor |
|---------------------------------------|-----------------------------|--|----------------|---------------------------|-----------------|
| <b>4000 Commodities Detail Totals</b> |                             |  | <b>1,728.7</b> | <b>2,143.5</b>            | <b>2,143.5</b>  |
| 4017                                  | Sand                        | Sand Supplies  | 0.2            | 0.2                       | 0.2             |
| 4019                                  | Small Tools/Minor Equipment | Flat sockets, drill bits, hooks,<br>hammers, and other small tools | 34.9           | 43.2                      | 43.2            |
| 4020                                  | Equipment Fuel              | Equipment fuel   | 78.6           | 97.5                      | 97.5            |
| 4022                                  | Commodity Transfer          | Commodity transfer   | 20.6           | 25.5                      | 25.5            |

**Line Item Detail (1676)**  
**Department of Fish and Game**  
**Capital Outlay**

**Component:** Sport Fisheries (464)

| Line Number                              | Line Name        |                                 | FY2020 Actuals | FY2021 Management Plan | FY2022 Governor |
|--|------------------|---------------------------------|----------------|------------------------|-----------------|
| 5000                                     | Capital Outlay   |                                 | 189.4          | 711.5                  | 711.5           |
| Object Class                             | Servicing Agency | Explanation                     | FY2020 Actuals | FY2021 Management Plan | FY2022 Governor |
| <b>5000 Capital Outlay Detail Totals</b> |                  |                                 | <b>189.4</b>   | <b>711.5</b>           | <b>711.5</b>    |
| 5004                                     | Equipment        | Automobile and marine equipment | 189.4          | 711.5                  | 711.5           |



**Revenue Detail (1681)**  
**Department of Fish and Game**

**Component:** Sport Fisheries (464)

| Revenue Type (OMB Fund Code)<br>Revenue Source                       | Component   | Comment   | FY2020 Actuals  | FY2021<br>Management Plan | FY2022 Governor |
|--|---|---|-----------------|---------------------------|-----------------|
| <b>5002 Fed Rcpts (1002 Fed Rcpts)</b>                               |   |   | <b>16,244.0</b> | <b>17,416.0</b>           | <b>17,470.8</b> |
| 5003 Federal - Indirect Recovery                                     |   | Indirect Collection                                   | 2,641.8         | 2,832.4                   | 2,841.3         |
| 5010 Federal Natural Resources -<br>Miscellaneous Grants             |   | Miscellaneous Grants                                  | 13,601.7        | 14,583.0                  | 14,628.9        |
| 5022 Federal - Charges for Services Prior<br>Year Reimbrsmnt Recovry |   | Prior Year Reimbursement<br>Recovery                  | 0.5             | 0.6                       | 0.6             |
| <b>5007 I/A Rcpts (1007 I/A Rcpts)</b>                               |   |   | <b>398.3</b>    | <b>699.6</b>              | <b>700.5</b>    |
| 5301 Inter-Agency Receipts   |   | RSAs Miscellaneous                                    | 0.0             | 35.0                      | 34.9            |
| 5301 Inter-Agency Receipts   | FishGm - EVOS Trustee Council<br>(2693)           | RSAs with EVOS  | 21.4            | 37.5                      | 37.8            |
| 5301 Inter-Agency Receipts   | FishGm - Habitat (486)                            | RSAs with Habitat ARLIS                               | 8.9             | 15.6                      | 15.6            |
| 5301 Inter-Agency Receipts   | FishGm - State Subsistence<br>Research (2625)     | RSAs with Subsistence ARLIS                           | 4.5             | 7.9                       | 7.9             |
| 5301 Inter-Agency Receipts   | FishGm - Statewide Fisheries<br>Management (2171) | RSAs with Commercial Fisheries                        | 142.7           | 250.6                     | 250.9           |
| 5301 Inter-Agency Receipts   | FishGm - Wildlife Conservation<br>(473)           | RSAs with Wildlife Conservation                       | 182.7           | 320.9                     | 321.3           |
| 5301 Inter-Agency Receipts   | H&SS - Department-wide                            | RSAs with Department of Health<br>and Social Services | 8.5             | 14.9                      | 14.9            |
| 5301 Inter-Agency Receipts   | NatRes - Department-wide                          | RSAs with Department of Natural<br>Resources          | 9.8             | 17.2                      | 17.2            |
| 5301 Inter-Agency Receipts   | H&SS - Department-wide                            | Coronavirus Relief Fund.                              | 19.8            | 0.0                       | 0.0             |
| <b>5061 CIP Rcpts (1061 CIP Rcpts)</b>                               |   |   | <b>822.7</b>    | <b>2,174.8</b>            | <b>2,177.2</b>  |
| 5351 Capital Improvement Project<br>Inter-Agency                     |   | CIP Inter-Agency                                      | 822.7           | 2,174.8                   | 2,177.2         |
| <b>5108 Stat Desig (1108 Stat Desig)</b>                             |   |   | <b>665.9</b>    | <b>1,532.5</b>            | <b>1,533.1</b>  |
| 5206 Statutory Designated Program<br>Receipts - Contracts            |   | Statutory Designated Program<br>Receipts              | 612.5           | 1,406.6                   | 1,407.2         |
| 5207 Statutory Dsgntd Pgrm Rcpts Chrgs for<br>Srvcs - Rent/Royalties |   | SDPR Rent and Royalties                               | 53.4            | 125.9                     | 125.9           |
| <b>6024 Fish/Game (1024 Fish/Game)</b>                               |   |   | <b>18,387.3</b> | <b>18,889.0</b>           | <b>18,932.5</b> |

**Revenue Detail (1681)**  
**Department of Fish and Game**

**Component:** Sport Fisheries (464)

| <b>Revenue Type (OMB Fund Code)</b>                          |                  |                |                       |                               |                        |
|--|------------------|----------------|-----------------------|-------------------------------|------------------------|
| <b>Revenue Source</b>  | <b>Component</b> | <b>Comment</b> | <b>FY2020 Actuals</b> | <b>FY2021 Management Plan</b> | <b>FY2022 Governor</b> |
| 6132 Fish & Game Fund - Prior Year<br>Reimbursement Recovery |                  |                | 18,387.3              | 18,889.0                      | 18,932.5               |

**Inter-Agency Services (1682)**  
**Department of Fish and Game**

**Component:** Sport Fisheries (464)

|   |  |   |                       | FY2020 Actuals                    | FY2021<br>Management Plan | FY2022 Governor |
|---|--|---|-----------------------|-----------------------------------|---------------------------|-----------------|
| <b>Component Totals</b>                             |  |   |                       | <b>7,556.9</b>                    | <b>8,192.2</b>            | <b>7,832.7</b>  |
| With Department of Fish and Game                    |  |   |                       | 4,867.4                           | 5,229.6                   | 5,150.3         |
| With Judiciary                                      |  |   |                       | 2.4                               | 2.4                       | 2.4             |
| With Department of Natural Resources                |  |   |                       | 474.4                             | 474.4                     | 474.4           |
| With Department of Transportation/Public Facilities |  |   |                       | 550.6                             | 606.3                     | 583.3           |
| With University of Alaska                           |  |   |                       | 94.4                              | 94.4                      | 94.4            |
| With Department of Administration                   |  |   |                       | 1,554.8                           | 1,770.1                   | 1,512.9         |
| With Department of Law                              |  |   |                       | 12.9                              | 15.0                      | 15.0            |
| <b>Object Class</b>                                 | <b>Servicing Agency</b>                                    | <b>Explanation</b>  | <b>FY2020 Actuals</b> | <b>FY2021<br/>Management Plan</b> | <b>FY2022 Governor</b>    |                 |
| 3012  | Inter-Agency Federal Indirect Rate Allocation              | FishGm - Administrative Services (479)<br>Federal Indirect paid to Division of Admin Service via SB250 Reimbursable Service Agreement | 2,641.8               | 3,004.0                           | 3,310.0                   |                 |
| 3015  | Inter-Agency Conservation/Environmental                    | Courts - Department-wide<br>RSA with Alaska Court System  | 2.4                   | 2.4                               | 2.4                       |                 |
| 3015  | Inter-Agency Conservation/Environmental                    | FishGm - Administrative Services (479)<br>RSAs within Department of Fish and Game   | 2,225.6               | 2,225.6                           | 1,840.3                   |                 |
| 3015  | Inter-Agency Conservation/Environmental                    | NatRes - Department-wide<br>RSAs with Department of Natural Resources   | 474.4                 | 474.4                             | 474.4                     |                 |
| 3015  | Inter-Agency Conservation/Environmental                    | Trans - Department-wide<br>RSAs with Department of Transportation   | 123.3                 | 123.3                             | 123.3                     |                 |
| 3015  | Inter-Agency Conservation/Environmental                    | Univ - Department-wide<br>RSAs with the University of Alaska  | 94.4                  | 94.4                              | 94.4                      |                 |
| 3017  | Inter-Agency Information Technology Non-Telecommunications | Admin - Department-wide<br>Computer Services  | 190.0                 | 216.0                             | 0.0                       |                 |
| 3019  | Inter-Agency Storage                                       | Admin - Department-wide<br>Storage  | 0.1                   | 0.1                               | 0.1                       |                 |
| 3021  | Inter-Agency Mail  | Admin - Department-wide<br>Centralized mail services chargeback   | 13.0                  | 15.0                              | 14.0                      |                 |
| 3023  | Inter-Agency Building Leases                               | Admin - Department-wide<br>Leases   | 1,140.2               | 1,299.0                           | 1,271.0                   |                 |
| 3023  | Inter-Agency Building Leases                               | Trans - Department-wide<br>Leases   | 19.9                  | 20.0                              | 14.0                      |                 |

**Inter-Agency Services (1682)**  
**Department of Fish and Game**

**Component:** Sport Fisheries (464)

| <b>Object Class</b>  | <b>Servicing Agency</b> | <b>Explanation</b>   | <b>FY2020 Actuals</b> | <b>FY2021 Management Plan</b> | <b>FY2022 Governor</b> |
|--|-------------------------|--|-----------------------|-------------------------------|------------------------|
| 3024 Inter-Agency Legal                                      | Law - Department-wide   | RSAs with Department of Law  | 12.9                  | 15.0                          | 15.0                   |
| 3026 Inter-Agency Insurance                                  | Admin - Department-wide | Risk management, and property insurance                              | 142.3                 | 162.0                         | 155.8                  |
| 3027 Inter-Agency Financial                                  | Admin - Department-wide | State payroll (HRM) and accounting (IRIS & ALDER) systems chargeback | 48.9                  | 56.0                          | 53.0                   |
| 3028 Inter-Agency Americans with Disabilities Act Compliance | Admin - Department-wide | Americans with Disabilities Act (ADA) chargeback                     | 2.3                   | 2.0                           | 0.0                    |
| 3037 State Equipment Fleet                                   | Trans - Department-wide | State Equipment Fleet  | 407.4                 | 463.0                         | 446.0                  |
| 3038 Inter-Agency Management/Consulting                      | Admin - Department-wide | (Dept) Management/Consulting   | 18.0                  | 20.0                          | 19.0                   |

**Personal Services Expenditure Detail**  
**Department of Fish and Game**

**Scenario:** FY2022 Governor (17280)  
**Component:** Sport Fisheries (464)  
**RDU:** Sport Fisheries (145)

| PCN     | Job Class Title                | Time Status | Retire Code | Barg Unit | Location    | Salary Sched | Range / Step | Comp Months | Split / Count | Annual Salaries | COLA | Premium Pay | Annual Benefits | Total Costs | UGF Amount |
|---------|--------------------------------|-------------|-------------|-----------|-------------|--------------|--------------|-------------|---------------|-----------------|------|-------------|-----------------|-------------|------------|
| 11-0253 | Accounting Technician III      | FT          | A           | GP        | Juneau      | 205          | 16D / E      | 12.0        |               | 61,788          | 832  | 0           | 40,175          | 102,795     | 0          |
| 11-0420 | Fish & Game Program Technician | FT          | A           | GP        | Kotzebue    | 260          | 12E          | 2.4         | *             | 14,777          | 236  | 0           | 8,872           | 23,885      | 0          |
| 11-1060 | Fish & Wildlife Technician II  | PT          | A           | GP        | Ketchikan   | 200          | 9B           | 5.0         |               | 14,243          | 192  | 0           | 12,759          | 27,194      | 0          |
| 11-1124 | Fish & Wildlife Technician II  | PT          | A           | GP        | Haines      | 200          | 9B           | 3.5         | *             | 10,165          | 192  | 0           | 8,999           | 19,356      | 19,356     |
| 11-1125 | Fish & Wildlife Technician III | PT          | A           | GP        | Yakutat     | 200          | 11A          | 10.5        |               | 32,777          | 481  | 2,950       | 20,586          | 56,794      | 0          |
| 11-1165 | Fish & Wildlife Technician II  | PT          | A           | GP        | Haines      | 200          | 9B           | 3.5         | *             | 9,970           | 189  | 0           | 8,931           | 19,090      | 19,090     |
| 11-1365 | Habitat Biologist III          | FT          | A           | GP        | Anchorage   | 200          | 18D / E      | 12.0        |               | 66,541          | 896  | 0           | 41,820          | 109,257     | 0          |
| 11-1443 | Fish & Game Program Technician | PT          | A           | GP        | Haines      | 200          | 12J          | 2.6         | *             | 10,884          | 187  | 0           | 7,838           | 18,909      | 18,909     |
| 11-1454 | Fish & Wildlife Technician III | PT          | A           | GP        | Petersburg  | 200          | 11A / A      | 11.5        |               | 35,899          | 503  | 1,498       | 21,947          | 59,847      | 25,734     |
| 11-1465 | Office Assistant II            | PT          | A           | GP        | Homer       | 200          | 10A          | 6.0         | *             | 17,599          | 331  | 0           | 15,486          | 33,416      | 33,416     |
| 11-1502 | Fish & Wildlife Technician III | PT          | A           | GP        | Yakutat     | 200          | 11A / B      | 4.5         |               | 14,450          | 203  | 616         | 8,738           | 24,007      | 0          |
| 11-1589 | Fish & Wildlife Technician III | PT          | A           | GP        | Haines      | 200          | 11B          | 5.0         | *             | 16,274          | 263  | 300         | 9,651           | 26,488      | 26,488     |
| 11-1627 | Fish & Wildlife Technician II  | PT          | A           | GP        | Glennallen  | 200          | 9A           | 2.5         |               | 6,910           | 98   | 382         | 6,438           | 13,828      | 0          |
| 11-1655 | Fish & Wildlife Technician II  | PT          | A           | GP        | Glennallen  | 200          | 9D           | 5.0         |               | 15,096          | 244  | 3,065       | 14,115          | 32,520      | 0          |
| 11-1672 | Fish & Wildlife Technician III | PT          | A           | GP        | Haines      | 200          | 11J          | 7.5         |               | 29,348          | 455  | 4,442       | 17,567          | 51,812      | 0          |
| 11-1706 | Fish & Wildlife Technician III | PT          | A           | GP        | Haines      | 200          | 11D / E      | 3.0         |               | 10,559          | 208  | 4,873       | 7,690           | 23,330      | 0          |
| 11-1724 | Fish & Wildlife Technician III | PT          | A           | GP        | Douglas     | 205          | 11A / A      | 11.0        |               | 36,054          | 485  | 0           | 29,703          | 66,242      | 0          |
| 11-1727 | Fish & Wildlife Technician II  | PT          | A           | GP        | Haines      | 200          | 9B           | 5.0         |               | 14,243          | 221  | 2,200       | 9,606           | 26,270      | 0          |
| 11-1735 | Fish & Wildlife Technician III | PT          | A           | GP        | Petersburg  | 200          | 11A          | 3.0         | *             | 9,365           | 161  | 1,450       | 6,092           | 17,068      | 8,705      |
| 11-1736 | Fishery Biologist II           | FT          | A           | SS        | Fairbanks   | 203          | 16J / K      | 12.0        |               | 71,353          | 0    | 0           | 43,526          | 114,879     | 0          |
| 11-1788 | Fish & Wildlife Technician II  | PT          | A           | GP        | Palmer      | 200          | 9E / F       | 7.0         |               | 22,120          | 319  | 1,584       | 19,165          | 43,188      | 0          |
| 11-1793 | Fish & Wildlife Technician III | PT          | A           | GP        | Soldotna    | 200          | 11G          | 4.0         |               | 15,028          | 222  | 1,462       | 11,971          | 28,683      | 0          |
| 11-1822 | Fish & Wildlife Technician III | PT          | A           | GP        | Douglas     | 205          | 11C          | 2.0         | *             | 6,942           | 148  | 3,046       | 6,589           | 16,725      | 0          |
| 11-1863 | Fish & Wildlife Technician II  | PT          | A           | GP        | Yakutat     | 200          | 9A           | 2.0         |               | 5,528           | 90   | 1,148       | 3,876           | 10,642      | 0          |
| 11-1867 | Fish & Wildlife Technician II  | PT          | A           | GP        | Sitka       | 205          | 9A / B       | 5.0         |               | 14,556          | 233  | 2,755       | 9,906           | 27,450      | 27,450     |
| 11-1869 | Fish & Wildlife Technician III | PT          | A           | GP        | Wrangell    | 200          | 11F          | 10.5        |               | 38,101          | 513  | 0           | 21,408          | 60,022      | 21,008     |
| 11-1936 | Fish & Wildlife Technician III | PT          | A           | GP        | Craig       | 200          | 11B / C      | 4.5         |               | 14,874          | 241  | 3,051       | 9,727           | 27,893      | 12,552     |
| 11-1943 | Fish & Wildlife Technician III | PT          | A           | GP        | Wrangell    | 200          | 11B / C      | 5.0         |               | 16,291          | 279  | 4,446       | 11,092          | 32,108      | 0          |
| 11-1960 | Fishery Biologist III          | FT          | A           | SS        | Anchorage   | 99           | 18R          | 12.0        |               | 103,901         | 0    | 0           | 54,790          | 158,691     | 0          |
| 11-2072 | Fish & Game Program Technician | FT          | A           | GP        | Cordova     | 211          | 12G / J      | 6.0         | *             | 27,875          | 469  | 0           | 19,043          | 47,387      | 0          |
| 11-2116 | Fish & Game Program Technician | FT          | A           | GP        | Glennallen  | 200          | 12C / D      | 6.0         | *             | 21,690          | 386  | 0           | 16,902          | 38,978      | 0          |
| 11-2118 | Fish & Game Program Technician | FT          | A           | GP        | King Salmon | 250          | 12A          | 2.4         | *             | 12,005          | 199  | 0           | 7,913           | 20,117      | 0          |
| 11-4001 | Division Director - Px         | FT          | A           | XE        | Anchorage   | N00          | 27E          | 12.0        |               | 118,521         | 0    | 0           | 59,706          | 178,227     | 0          |
| 11-4003 | Fish & Game Coordinator        | FT          | A           | SS        | Douglas     | 99           | 22M          | 12.0        |               | 126,214         | 0    | 0           | 62,513          | 188,727     | 0          |

Note: If a position is split, an asterisk (\*) will appear in the Split/Count column. If the split position is also counted in the component, two asterisks (\*\*) will appear in this column. [No valid job title] appearing in the Job Class Title indicates that the PCN has an invalid class code or invalid range for the class code effective date of this scenario.

**Personal Services Expenditure Detail**  
**Department of Fish and Game**

**Scenario:** FY2022 Governor (17280)  
**Component:** Sport Fisheries (464)  
**RDU:** Sport Fisheries (145)

| PCN     | Job Class Title                | Time Status | Retire Code | Barg Unit | Location   | Salary Sched | Range / Step | Comp Months | Split / Count | Annual Salaries | COLA  | Premium Pay | Annual Benefits | Total Costs | UGF Amount |
|---------|--------------------------------|-------------|-------------|-----------|------------|--------------|--------------|-------------|---------------|-----------------|-------|-------------|-----------------|-------------|------------|
| 11-4005 | Habitat Biologist III          | FT          | A           | GP        | Anchorage  | 200          | 18D / E      | 12.0        |               | 67,542          | 909   | 0           | 42,167          | 110,618     | 0          |
| 11-4006 | Admn OPS Mgr I                 | FT          | A           | SS        | Juneau     | 205          | 22B / B      | 12.0        |               | 90,730          | 0     | 0           | 50,232          | 140,962     | 0          |
| 11-4008 | Fishery Biologist III          | FT          | A           | SS        | Douglas    | 205          | 18F          | 12.0        |               | 79,456          | 0     | 0           | 46,330          | 125,786     | 0          |
| 11-4010 | Fish & Game Coordinator        | FT          | A           | SS        | Anchorage  | 99           | 22P          | 12.0        |               | 134,891         | 0     | 0           | 65,516          | 200,407     | 0          |
| 11-4011 | Fishery Biologist IV           | FT          | A           | SS        | Anchorage  | 200          | 20N / O      | 12.0        |               | 103,317         | 0     | 0           | 54,588          | 157,905     | 0          |
| 11-4014 | Fishery Biologist III          | FT          | A           | SS        | Palmer     | 99           | 18M / N      | 12.0        |               | 86,653          | 0     | 0           | 48,821          | 135,474     | 0          |
| 11-4019 | Fish & Game Coordinator        | FT          | A           | SS        | Anchorage  | 200          | 22L / M      | 12.0        |               | 108,786         | 0     | 0           | 56,481          | 165,267     | 0          |
| 11-4020 | Fishery Biologist III          | FT          | A           | SS        | Soldotna   | 200          | 18B / C      | 12.0        |               | 67,389          | 0     | 0           | 42,154          | 109,543     | 0          |
| 11-4021 | Accounting Technician I        | FT          | A           | GP        | Douglas    | 205          | 12C / D      | 12.0        |               | 44,920          | 605   | 0           | 34,337          | 79,862      | 0          |
| 11-4022 | Fishery Biologist IV           | FT          | A           | SS        | Sitka      | 99           | 20O / P      | 12.0        |               | 111,999         | 0     | 0           | 57,593          | 169,592     | 0          |
| 11-4023 | Fishery Biologist III          | FT          | A           | SS        | Soldotna   | 99           | 18O / P      | 12.0        |               | 93,412          | 0     | 0           | 51,160          | 144,572     | 0          |
| 11-4024 | Fishery Biologist III          | FT          | A           | SS        | Anchorage  | 200          | 18L / M      | 12.0        |               | 83,621          | 0     | 0           | 47,772          | 131,393     | 0          |
| 11-4025 | Biometrician III               | FT          | A           | GP        | Anchorage  | 99           | 20R          | 12.0        |               | 115,015         | 1,548 | 0           | 58,597          | 175,160     | 0          |
| 11-4026 | Fish & Game Coordinator        | FT          | A           | SS        | Fairbanks  | 203          | 22O / P      | 12.0        |               | 123,365         | 0     | 0           | 61,527          | 184,892     | 0          |
| 11-4028 | Fishery Biologist III          | FT          | A           | GP        | Fairbanks  | 99           | 18O          | 12.0        |               | 92,789          | 1,249 | 25          | 50,913          | 144,976     | 0          |
| 11-4029 | Fishery Biologist III          | FT          | A           | SS        | Fairbanks  | 203          | 18E          | 12.0        |               | 75,067          | 0     | 0           | 44,811          | 119,878     | 0          |
| 11-4031 | Fishery Biologist III          | FT          | A           | SS        | Kodiak     | 211          | 18F / J      | 12.0        |               | 86,715          | 0     | 0           | 48,842          | 135,557     | 0          |
| 11-4032 | Fishery Biologist III          | FT          | A           | SS        | Douglas    | 205          | 18K          | 12.0        |               | 84,698          | 0     | 100         | 48,179          | 132,977     | 0          |
| 11-4035 | Fish & Wildlife Technician II  | PT          | A           | GP        | Palmer     | 200          | 9F / G       | 10.5        |               | 33,857          | 528   | 5,335       | 30,006          | 69,726      | 0          |
| 11-4036 | Administrative Officer I       | FT          | A           | SS        | Fairbanks  | 203          | 17E / F      | 12.0        |               | 72,514          | 0     | 0           | 43,927          | 116,441     | 0          |
| 11-4041 | Fish & Wildlife Technician V   | PT          | A           | GP        | Fairbanks  | 203          | 14L          | 12.0        |               | 63,414          | 854   | 0           | 40,738          | 105,006     | 11,551     |
| 11-4042 | Division Operations Manager    | FT          | A           | SS        | Juneau     | 205          | 24K / L      | 12.0        |               | 129,729         | 0     | 0           | 63,729          | 193,458     | 0          |
| 11-4043 | Fishery Biologist III          | FT          | A           | GP        | Fairbanks  | 203          | 18P          | 12.0        |               | 94,926          | 1,278 | 0           | 51,644          | 147,848     | 0          |
| 11-4044 | Fishery Biologist III          | FT          | A           | SS        | Glennallen | 99           | 18M          | 12.0        |               | 86,424          | 0     | 0           | 48,742          | 135,166     | 0          |
| 11-4045 | Fishery Biologist II           | FT          | A           | SS        | Palmer     | 200          | 16F / J      | 12.0        |               | 66,549          | 0     | 0           | 41,863          | 108,412     | 0          |
| 11-4046 | Project Assistant              | FT          | A           | GP        | Anchorage  | 200          | 16L / M      | 12.0        |               | 72,264          | 1,017 | 3,273       | 44,934          | 121,488     | 0          |
| 11-4047 | Fish & Game Program Technician | FT          | A           | GP        | Soldotna   | 200          | 12L          | 6.0         | **            | 26,774          | 488   | 2,473       | 19,518          | 49,253      | 0          |
| 11-4050 | Fishery Biologist III          | FT          | A           | SS        | Sitka      | 99           | 18O          | 12.0        |               | 97,673          | 0     | 689         | 52,873          | 151,235     | 0          |
| 11-4052 | Asst Dir F&G                   | FT          | A           | SS        | Juneau     | 99           | 22N          | 12.0        |               | 131,583         | 0     | 0           | 64,371          | 195,954     | 0          |
| 11-4053 | Fish & Game Program Technician | FT          | A           | GP        | Kodiak     | 211          | 12E          | 6.0         | **            | 25,054          | 432   | 50          | 18,084          | 43,620      | 0          |
| 11-4058 | Accountant III                 | FT          | A           | SS        | Juneau     | 205          | 18K / L      | 12.0        |               | 86,070          | 0     | 0           | 48,619          | 134,689     | 0          |
| 11-4062 | Fish & Wildlife Technician II  | PT          | A           | GP        | Kodiak     | 211          | 9A / A       | 1.7         |               | 5,216           | 90    | 1,496       | 4,985           | 11,787      | 0          |
| 11-4063 | Asst Dir F&G                   | FT          | A           | SS        | Anchorage  | 99           | 22O          | 12.0        |               | 121,318         | 0     | 0           | 60,818          | 182,136     | 0          |
| 11-4066 | Accounting Technician I        | FT          | A           | GP        | Anchorage  | 200          | 12C / D      | 12.0        |               | 43,544          | 586   | 0           | 33,861          | 77,991      | 0          |
| 11-4067 | Fish & Wildlife Technician II  | PT          | A           | GP        | Wrangell   | 200          | 9A / B       | 3.0         |               | 8,419           | 216   | 7,654       | 7,912           | 24,201      | 0          |
| 11-4069 | Fishery Biologist II           | FT          | A           | SS        | Fairbanks  | 99           | 16P          | 12.0        |               | 86,806          | 0     | 1,230       | 49,300          | 137,336     | 0          |

Note: If a position is split, an asterisk (\*) will appear in the Split/Count column. If the split position is also counted in the component, two asterisks (\*\*) will appear in this column. [No valid job title] appearing in the Job Class Title indicates that the PCN has an invalid class code or invalid range for the class code effective date of this scenario.

**Personal Services Expenditure Detail**  
**Department of Fish and Game**

**Scenario:** FY2022 Governor (17280)  
**Component:** Sport Fisheries (464)  
**RDU:** Sport Fisheries (145)

| PCN     | Job Class Title                | Time Status | Retire Code | Barg Unit | Location       | Salary Sched | Range / Step | Comp Months | Split / Count | Annual Salaries | COLA  | Premium Pay | Annual Benefits | Total Costs | UGF Amount |
|---------|--------------------------------|-------------|-------------|-----------|----------------|--------------|--------------|-------------|---------------|-----------------|-------|-------------|-----------------|-------------|------------|
| 11-4070 | Administrative Assistant II    | FT          | A           | GP        | Fairbanks      | 203          | 14K          | 12.0        |               | 61,425          | 906   | 5,906       | 42,094          | 110,331     | 0          |
| 11-4071 | Administrative Officer I       | FT          | A           | SS        | Anchorage      | 200          | 17D / E      | 12.0        |               | 67,205          | 0     | 0           | 42,090          | 109,295     | 0          |
| 11-4073 | Fishery Biologist IV           | FT          | A           | SS        | Douglas        | 99           | 20N          | 12.0        |               | 107,509         | 0     | 0           | 56,039          | 163,548     | 0          |
| 11-4075 | Fishery Biologist III          | FT          | A           | SS        | Fairbanks      | 203          | 18L / M      | 12.0        |               | 87,637          | 0     | 0           | 49,161          | 136,798     | 0          |
| 11-4076 | Fishery Biologist IV           | FT          | A           | SS        | Fairbanks      | 203          | 20M          | 12.0        |               | 101,171         | 0     | 0           | 53,846          | 155,017     | 0          |
| 11-4078 | Fish & Wildlife Technician III | FT          | A           | GP        | Douglas        | 205          | 11C / D      | 12.0        |               | 42,391          | 657   | 6,408       | 35,680          | 85,136      | 0          |
| 11-4079 | Fishery Biologist II           | PT          | A           | SS        | Delta Junction | 200          | 16K / L      | 11.5        |               | 67,915          | 0     | 120         | 41,593          | 109,628     | 0          |
| 11-4080 | Fish & Wildlife Technician III | PT          | A           | GP        | Palmer         | 200          | 11A / B      | 5.0         |               | 15,653          | 366   | 11,526      | 17,236          | 44,781      | 0          |
| 11-4088 | Fish & Wildlife Technician II  | PT          | A           | GP        | Douglas        | 205          | 9B / C       | 9.0         |               | 27,714          | 374   | 105         | 16,675          | 44,868      | 22,434     |
| 11-4089 | Fishery Biologist I            | PT          | A           | GP        | Homer          | 200          | 14G / J      | 10.0        |               | 47,166          | 670   | 2,611       | 32,886          | 83,333      | 18,333     |
| 11-4092 | Fish & Wildlife Technician II  | PT          | A           | GP        | Douglas        | 205          | 9J           | 5.0         |               | 18,078          | 264   | 1,514       | 10,695          | 30,551      | 0          |
| 11-4095 | Fish & Wildlife Technician III | PT          | A           | GP        | Fairbanks      | 203          | 11B / C      | 9.5         |               | 31,562          | 491   | 4,886       | 27,490          | 64,429      | 0          |
| 11-4096 | Fishery Biologist II           | FT          | A           | SS        | Fairbanks      | 203          | 16F          | 12.0        |               | 68,078          | 0     | 10,495      | 46,024          | 124,597     | 0          |
| 11-4098 | Fishery Biologist IV           | FT          | A           | SS        | Anchorage      | 99           | 20O          | 12.0        |               | 106,242         | 0     | 0           | 55,601          | 161,843     | 0          |
| 11-4103 | Research Analyst II            | FT          | A           | GP        | Douglas        | 99           | 16N          | 12.0        |               | 79,794          | 1,097 | 1,718       | 47,002          | 129,611     | 72,582     |
| 11-4106 | Fish & Wildlife Technician IV  | PT          | A           | GP        | Glennallen     | 200          | 13J / K      | 5.0         |               | 22,758          | 350   | 3,277       | 16,840          | 43,225      | 0          |
| 11-4107 | Fishery Biologist III          | FT          | A           | SS        | Haines         | 200          | 18K          | 12.0        |               | 80,662          | 0     | 300         | 46,851          | 127,813     | 0          |
| 11-4109 | Fishery Biologist III          | FT          | A           | SS        | Haines         | 99           | 18N / O      | 12.0        |               | 91,490          | 0     | 0           | 50,495          | 141,985     | 0          |
| 11-4110 | Fishery Biologist II           | FT          | A           | SS        | Ketchikan      | 200          | 16J          | 12.0        |               | 68,245          | 0     | 492         | 42,620          | 111,357     | 0          |
| 11-4113 | Fishery Biologist II           | FT          | A           | SS        | Douglas        | 205          | 16K / L      | 12.0        |               | 75,103          | 0     | 656         | 45,050          | 120,809     | 120,809    |
| 11-4114 | Fish & Wildlife Technician II  | PT          | A           | GP        | Ketchikan      | 200          | 9C           | 4.5         |               | 13,199          | 181   | 270         | 8,185           | 21,835      | 0          |
| 11-4115 | Fishery Biologist II           | FT          | A           | SS        | Douglas        | 99           | 16P          | 12.0        |               | 88,504          | 0     | 0           | 49,462          | 137,966     | 0          |
| 11-4119 | Biometrician I                 | FT          | A           | GP        | Fairbanks      | 203          | 17A / B      | 12.0        |               | 57,818          | 778   | 0           | 38,801          | 97,397      | 0          |
| 11-4120 | Publications Technician II     | FT          | A           | GP        | Fairbanks      | 203          | 13L          | 12.0        |               | 59,202          | 797   | 0           | 39,280          | 99,279      | 0          |
| 11-4121 | Fish & Game Program Technician | FT          | A           | GP        | Palmer         | 200          | 12D / E      | 12.0        |               | 44,635          | 623   | 1,674       | 34,818          | 81,750      | 0          |
| 11-4122 | Fish & Wildlife Technician II  | PT          | A           | GP        | Valdez         | 211          | 9A / B       | 3.5         |               | 11,068          | 160   | 852         | 9,606           | 21,686      | 21,686     |
| 11-4123 | Fish & Wildlife Technician III | PT          | A           | GP        | Glennallen     | 200          | 11F          | 6.0         |               | 21,772          | 340   | 3,516       | 18,147          | 43,775      | 0          |
| 11-4124 | Fish & Wildlife Technician III | PT          | A           | GP        | Homer          | 200          | 11A          | 4.5         |               | 14,047          | 201   | 876         | 12,211          | 27,335      | 27,335     |
| 11-4125 | Fishery Biologist I            | FT          | A           | GP        | Soldotna       | 200          | 14C / D      | 12.0        |               | 49,979          | 673   | 0           | 36,088          | 86,740      | 0          |
| 11-4128 | Fish & Wildlife Technician III | PT          | A           | GP        | Dillingham     | 237          | 11A / B      | 11.5        |               | 49,612          | 821   | 11,370      | 39,113          | 100,916     | 0          |
| 11-4129 | Fish & Wildlife Technician II  | PT          | A           | GP        | Fairbanks      | 203          | 9A           | 2.0         |               | 5,694           | 85    | 655         | 5,329           | 11,763      | 0          |
| 11-4130 | Fish & Wildlife Technician III | PT          | A           | GP        | Palmer         | 200          | 11B / C      | 9.0         |               | 29,747          | 565   | 12,204      | 28,612          | 71,128      | 0          |
| 11-4131 | Fishery Biologist II           | FT          | A           | GP        | Soldotna       | 200          | 16G / J      | 12.0        |               | 66,092          | 890   | 0           | 41,665          | 108,647     | 27,162     |
| 11-4132 | Fish & Wildlife Technician II  | PT          | A           | GP        | Dillingham     | 237          | 9A / B       | 1.5         |               | 5,855           | 94    | 1,152       | 4,774           | 11,875      | 0          |
| 11-4135 | Fish & Game Program Technician | FT          | A           | GP        | Douglas        | 205          | 12C / D      | 12.0        |               | 45,439          | 635   | 1,705       | 35,107          | 82,886      | 0          |
| 11-4136 | Fishery Biologist III          | FT          | A           | SS        | Anchorage      | 200          | 18M          | 12.0        |               | 85,987          | 0     | 0           | 48,590          | 134,577     | 0          |

Note: If a position is split, an asterisk (\*) will appear in the Split/Count column. If the split position is also counted in the component, two asterisks (\*\*) will appear in this column. [No valid job title] appearing in the Job Class Title indicates that the PCN has an invalid class code or invalid range for the class code effective date of this scenario.

**Personal Services Expenditure Detail**  
**Department of Fish and Game**

**Scenario:** FY2022 Governor (17280)  
**Component:** Sport Fisheries (464)  
**RDU:** Sport Fisheries (145)

| PCN     | Job Class Title                | Time Status | Retire Code | Barg Unit | Location   | Salary Sched | Range / Step | Comp Months | Split / Count | Annual Salaries | COLA  | Premium Pay | Annual Benefits | Total Costs | UGF Amount |
|---------|--------------------------------|-------------|-------------|-----------|------------|--------------|--------------|-------------|---------------|-----------------|-------|-------------|-----------------|-------------|------------|
| 11-4137 | Fishery Biologist II           | FT          | A           | SS        | Glennallen | 99           | 16O          | 12.0        |               | 81,652          | 0     | 1,885       | 47,742          | 131,279     | 0          |
| 11-4138 | Fish & Wildlife Technician II  | PT          | A           | GP        | Glennallen | 200          | 9A           | 1.0         |               | 2,764           | 44    | 476         | 2,687           | 5,971       | 0          |
| 11-4139 | Fish & Wildlife Technician II  | PT          | A           | GP        | Palmer     | 200          | 9A           | 2.0         |               | 5,528           | 93    | 1,403       | 5,531           | 12,555      | 0          |
| 11-4141 | Fish & Wildlife Technician II  | PT          | N           | GP        | Palmer     | 200          | 9A           | 3.0         |               | 8,292           | 208   | 10,206      | 7,030           | 25,736      | 0          |
| 11-4142 | Fish & Wildlife Technician II  | PT          | A           | GP        | Kodiak     | 211          | 9A           | 3.5         |               | 10,738          | 156   | 826         | 9,483           | 21,203      | 21,203     |
| 11-4143 | Fish & Wildlife Technician II  | PT          | N           | GP        | Palmer     | 200          | 9B / C       | 4.0         |               | 11,690          | 159   | 2,420       | 8,043           | 22,312      | 0          |
| 11-4144 | Fish & Wildlife Technician II  | PT          | A           | GP        | Palmer     | 200          | 9A           | 4.5         |               | 12,439          | 167   | 0           | 11,352          | 23,958      | 23,958     |
| 11-4146 | Fish & Wildlife Technician II  | PT          | A           | GP        | Soldotna   | 200          | 9C / D       | 3.5         |               | 10,438          | 287   | 10,862      | 12,852          | 34,439      | 0          |
| 11-4147 | Office Assistant I             | FT          | A           | GP        | Anchorage  | 200          | 8B / C       | 12.0        |               | 32,437          | 437   | 0           | 30,017          | 62,891      | 0          |
| 11-4148 | Fishery Biologist I            | FT          | A           | GP        | Palmer     | 200          | 14G          | 12.0        |               | 55,439          | 763   | 1,279       | 38,420          | 95,901      | 0          |
| 11-4149 | Fish & Wildlife Technician II  | PT          | A           | GP        | Soldotna   | 200          | 9A           | 3.0         |               | 8,292           | 249   | 10,206      | 11,100          | 29,847      | 0          |
| 11-4150 | Fish & Wildlife Technician III | PT          | A           | GP        | Palmer     | 200          | 11A          | 4.5         |               | 14,047          | 220   | 2,293       | 12,702          | 29,262      | 0          |
| 11-4151 | Fish & Wildlife Technician III | PT          | A           | GP        | Palmer     | 200          | 11F / G      | 5.0         |               | 18,785          | 285   | 2,358       | 15,147          | 36,575      | 0          |
| 11-4152 | Fish & Wildlife Technician III | PT          | A           | GP        | Palmer     | 99           | 11M / N      | 5.0         |               | 21,778          | 342   | 3,602       | 16,613          | 42,335      | 0          |
| 11-4154 | Fish & Wildlife Technician III | PT          | A           | GP        | Homer      | 200          | 11A          | 3.6         | **            | 11,238          | 219   | 853         | 9,822           | 22,132      | 22,132     |
| 11-4155 | Fish & Wildlife Technician III | PT          | A           | GP        | Soldotna   | 200          | 11A / B      | 11.0        |               | 35,321          | 635   | 11,856      | 33,552          | 81,364      | 0          |
| 11-4157 | Fish & Wildlife Technician III | PT          | A           | GP        | Seward     | 200          | 11G          | 3.5         |               | 13,150          | 191   | 1,013       | 10,382          | 24,736      | 24,736     |
| 11-4158 | Fishery Biologist II           | FT          | A           | SS        | Palmer     | 200          | 16K          | 12.0        |               | 70,470          | 0     | 75          | 43,246          | 113,791     | 0          |
| 11-4159 | Fishery Biologist II           | FT          | A           | SS        | Palmer     | 200          | 16K / L      | 12.0        |               | 72,377          | 0     | 0           | 43,880          | 116,257     | 0          |
| 11-4160 | Fishery Biologist II           | FT          | A           | SS        | Soldotna   | 99           | 16O          | 12.0        |               | 81,244          | 0     | 0           | 46,949          | 128,193     | 0          |
| 11-4163 | Fish & Wildlife Technician III | PT          | A           | GP        | Palmer     | 200          | 11G / J      | 7.5         |               | 28,412          | 569   | 13,872      | 26,378          | 69,231      | 17,308     |
| 11-4164 | Fishery Biologist III          | FT          | A           | SS        | Palmer     | 200          | 18E          | 12.0        |               | 72,883          | 0     | 0           | 44,055          | 116,938     | 29,235     |
| 11-4165 | Fishery Biologist II           | FT          | A           | SS        | Soldotna   | 200          | 16F / J      | 12.0        |               | 66,549          | 0     | 0           | 41,863          | 108,412     | 0          |
| 11-4166 | Fishery Biologist II           | FT          | A           | SS        | Soldotna   | 200          | 16F / J      | 12.0        |               | 67,441          | 0     | 61          | 42,193          | 109,695     | 0          |
| 11-4168 | Office Assistant I             | PT          | A           | GP        | Soldotna   | 200          | 8B           | 3.0         |               | 8,034           | 241   | 9,888       | 10,900          | 29,063      | 0          |
| 11-4169 | Fish & Game Program Technician | PT          | A           | GP        | Dillingham | 237          | 12A / B      | 10.0        |               | 46,670          | 628   | 0           | 31,811          | 79,109      | 0          |
| 11-4170 | Fishery Biologist II           | FT          | A           | SS        | Kodiak     | 99           | 16P          | 12.0        |               | 99,819          | 0     | 0           | 53,378          | 153,197     | 0          |
| 11-4171 | Fish & Wildlife Technician III | PT          | A           | GP        | Homer      | 200          | 11G          | 10.5        |               | 39,449          | 718   | 13,872      | 34,896          | 88,935      | 0          |
| 11-4172 | Fishery Biologist IV           | FT          | A           | SS        | Anchorage  | 99           | 20N          | 12.0        |               | 102,376         | 0     | 0           | 54,263          | 156,639     | 0          |
| 11-4175 | Fish & Wildlife Technician II  | PT          | A           | GP        | Homer      | 200          | 9B / C       | 3.5         |               | 10,224          | 156   | 1,360       | 9,490           | 21,230      | 0          |
| 11-4176 | Fish & Wildlife Technician III | PT          | A           | GP        | Glennallen | 200          | 11A / B      | 3.0         |               | 9,633           | 138   | 592         | 8,236           | 18,599      | 0          |
| 11-4177 | Fishery Biologist IV           | FT          | A           | GP        | Anchorage  | 200          | 20F / G      | 12.0        |               | 83,085          | 1,118 | 0           | 47,546          | 131,749     | 0          |
| 11-4178 | Fish & Game Program Technician | FT          | A           | GP        | Anchorage  | 200          | 12B / C      | 12.0        |               | 41,498          | 559   | 0           | 33,153          | 75,210      | 0          |
| 11-4183 | Research Analyst III           | FT          | A           | GP        | Anchorage  | 200          | 18L          | 12.0        |               | 81,081          | 1,091 | 0           | 46,852          | 129,024     | 0          |
| 11-4184 | Fish & Wildlife Technician III | PT          | A           | GP        | Glennallen | 200          | 11D          | 3.0         |               | 10,218          | 154   | 1,257       | 8,669           | 20,298      | 0          |
| 11-4185 | Fish & Wildlife Technician III | PT          | A           | GP        | Fairbanks  | 203          | 11G / J      | 4.0         |               | 15,557          | 224   | 1,071       | 12,018          | 28,870      | 0          |
| 11-4186 | Fishery Biologist II           | FT          | A           | SS        | Fairbanks  | 203          | 16B / C      | 12.0        |               | 60,585          | 0     | 50          | 39,816          | 100,451     | 0          |

Note: If a position is split, an asterisk (\*) will appear in the Split/Count column. If the split position is also counted in the component, two asterisks (\*\*) will appear in this column. [No valid job title] appearing in the Job Class Title indicates that the PCN has an invalid class code or invalid range for the class code effective date of this scenario.



**Personal Services Expenditure Detail**  
**Department of Fish and Game**

**Scenario:** FY2022 Governor (17280)  
**Component:** Sport Fisheries (464)  
**RDU:** Sport Fisheries (145)

| PCN     | Job Class Title                | Time Status | Retire Code | Barg Unit | Location       | Salary Sched | Range / Step | Comp Months | Split / Count | Annual Salaries | COLA  | Premium Pay | Annual Benefits | Total Costs | UGF Amount |
|---------|--------------------------------|-------------|-------------|-----------|----------------|--------------|--------------|-------------|---------------|-----------------|-------|-------------|-----------------|-------------|------------|
| 11-4187 | Biometrician IV                | FT          | A           | SS        | Anchorage      | 200          | 22C / D      | 12.0        |               | 92,000          | 0     | 0           | 50,671          | 142,671     | 0          |
| 11-4190 | Fishery Biologist I            | FT          | A           | GP        | Soldotna       | 200          | 14D / E      | 12.0        |               | 50,950          | 686   | 0           | 36,424          | 88,060      | 0          |
| 11-4191 | Office Assistant II            | FT          | A           | GP        | Anchorage      | 200          | 10D / E      | 12.0        |               | 39,616          | 533   | 0           | 32,501          | 72,650      | 0          |
| 11-4193 | Fishery Biologist II           | FT          | A           | SS        | Glennallen     | 200          | 16J / K      | 12.0        |               | 70,285          | 0     | 0           | 43,156          | 113,441     | 0          |
| 11-4195 | Fish & Wildlife Technician III | PT          | A           | GP        | Soldotna       | 200          | 11L          | 5.0         |               | 20,857          | 317   | 2,667       | 15,971          | 39,812      | 0          |
| 11-4196 | Fishery Biologist III          | FT          | A           | SS        | Craig          | 99           | 18N          | 12.0        |               | 89,662          | 0     | 126         | 49,906          | 139,694     | 0          |
| 11-4199 | Fishery Biologist III          | FT          | A           | SS        | Yakutat        | 200          | 18M / N      | 12.0        |               | 86,916          | 0     | 0           | 48,912          | 135,828     | 0          |
| 11-4200 | Fishery Biologist II           | PT          | A           | SS        | Dillingham     | 237          | 16B / C      | 12.0        |               | 81,328          | 0     | 0           | 46,978          | 128,306     | 0          |
| 11-4201 | Fish & Wildlife Technician III | PT          | A           | GP        | Delta Junction | 200          | 11J          | 3.3         | **            | 12,913          | 304   | 14,459      | 14,641          | 42,317      | 0          |
| 11-4203 | Biometrician III               | FT          | A           | GP        | Anchorage      | 200          | 20J          | 12.0        |               | 86,912          | 1,170 | 0           | 48,871          | 136,953     | 0          |
| 11-4205 | Fishery Biologist II           | FT          | A           | SS        | Palmer         | 200          | 16J          | 12.0        |               | 68,245          | 0     | 0           | 42,450          | 110,695     | 0          |
| 11-4206 | Fish & Wildlife Technician III | PT          | A           | GP        | Homer          | 200          | 11A / B      | 6.0         |               | 19,132          | 272   | 1,049       | 16,380          | 36,833      | 0          |
| 11-4207 | Fisheries Scientist II         | FT          | A           | SS        | Anchorage      | 99           | 24Q          | 12.0        |               | 149,495         | 0     | 0           | 70,160          | 219,655     | 0          |
| 11-4208 | Habitat Biologist II           | FT          | A           | GP        | Anchorage      | 200          | 16D / E      | 12.0        |               | 57,876          | 779   | 0           | 38,821          | 97,476      | 0          |
| 11-4210 | Fish & Wildlife Technician II  | PT          | A           | GP        | Dillingham     | 237          | 9D           | 2.5         |               | 10,339          | 160   | 1,527       | 8,021           | 20,047      | 0          |
| 11-4211 | Fish & Wildlife Technician II  | PT          | A           | GP        | Craig          | 200          | 9A           | 4.5         |               | 12,439          | 191   | 1,786       | 8,446           | 22,862      | 0          |
| 11-4212 | Fish & Wildlife Technician II  | PT          | A           | GP        | Palmer         | 200          | 9A / B       | 3.0         |               | 8,546           | 142   | 1,972       | 8,338           | 18,998      | 0          |
| 11-4213 | Fish & Wildlife Technician II  | PT          | A           | GP        | Soldotna       | 200          | 9A / B       | 11.0        |               | 30,955          | 554   | 10,206      | 31,470          | 73,185      | 0          |
| 11-4214 | Fish & Wildlife Technician II  | PT          | A           | GP        | Soldotna       | 200          | 9A           | 11.0        |               | 30,405          | 547   | 10,206      | 31,280          | 72,438      | 0          |
| 11-4215 | Fish & Wildlife Technician III | PT          | A           | GP        | Douglas        | 205          | 11D          | 9.5         |               | 38,055          | 632   | 8,914       | 23,694          | 71,295      | 24,953     |
| 11-4217 | Fish & Wildlife Technician III | PT          | A           | GP        | Palmer         | 200          | 11D          | 7.3         |               | 24,864          | 502   | 12,401      | 24,328          | 62,095      | 0          |
| 11-4221 | Fishery Biologist IV           | FT          | A           | SS        | Anchorage      | 99           | 20P          | 12.0        |               | 110,236         | 0     | 0           | 56,983          | 167,219     | 0          |
| 11-4223 | Administrative Assistant II    | FT          | A           | GP        | Douglas        | 205          | 14C / D      | 12.0        |               | 52,163          | 702   | 0           | 36,844          | 89,709      | 0          |
| 11-4224 | Fishery Biologist III          | FT          | A           | SS        | Palmer         | 99           | 18N          | 12.0        |               | 89,662          | 0     | 0           | 49,862          | 139,524     | 0          |
| 11-4226 | Analyst/Programmer IV          | FT          | A           | GP        | Anchorage      | 200          | 20A / B      | 12.0        |               | 70,805          | 953   | 0           | 43,296          | 115,054     | 0          |
| 11-4228 | Office Assistant II            | FT          | A           | GP        | Anchorage      | 200          | 10C / D      | 12.0        |               | 37,728          | 508   | 0           | 31,848          | 70,084      | 0          |
| 11-4229 | Fish & Wildlife Technician III | PT          | A           | GP        | Wrangell       | 200          | 11B / C      | 4.0         |               | 13,221          | 260   | 6,102       | 9,819           | 29,402      | 7,939      |
| 11-4232 | Fishery Biologist III          | FT          | A           | SS        | Dillingham     | 237          | 18B / C      | 12.0        |               | 91,569          | 0     | 0           | 50,522          | 142,091     | 0          |
| 11-4235 | Fishery Biologist III          | FT          | A           | SS        | Fairbanks      | 203          | 18M / N      | 12.0        |               | 90,480          | 0     | 0           | 50,145          | 140,625     | 0          |
| 11-4237 | Fish & Wildlife Technician III | PT          | A           | GP        | Fairbanks      | 203          | 11B          | 6.0         |               | 19,841          | 431   | 12,210      | 20,488          | 52,970      | 0          |
| 11-4239 | Fishery Biologist III          | FT          | A           | SS        | Homer          | 200          | 18J / K      | 12.0        |               | 80,662          | 0     | 14          | 46,752          | 127,428     | 0          |
| 11-4241 | Fish & Wildlife Technician II  | PT          | A           | GP        | Kodiak         | 211          | 9A / B       | 10.0        |               | 31,623          | 439   | 992         | 26,947          | 60,001      | 0          |
| 11-4242 | Fish & Wildlife Technician II  | PT          | A           | GP        | King Salmon    | 250          | 9A           | 0.5         |               | 2,074           | 28    | 0           | 1,501           | 3,603       | 0          |
| 11-4243 | Fishery Biologist III          | FT          | A           | SS        | Anchorage      | 200          | 18J / K      | 12.0        |               | 78,442          | 0     | 822         | 46,264          | 125,528     | 0          |
| 11-4246 | Accounting Technician I        | FT          | A           | GP        | Anchorage      | 200          | 12G / J      | 12.0        |               | 50,061          | 674   | 0           | 36,116          | 86,851      | 0          |
| 11-4247 | Fish & Wildlife Technician II  | PT          | A           | GP        | Fairbanks      | 203          | 9B / C       | 5.0         |               | 14,889          | 239   | 2,844       | 13,967          | 31,939      | 0          |
| 11-4248 | Fish & Wildlife Technician II  | PT          | A           | GP        | Fairbanks      | 203          | 9C           | 6.0         |               | 18,125          | 265   | 1,529       | 16,197          | 36,116      | 0          |
| 11-4249 | Fish & Wildlife Technician III | PT          | A           | GP        | Soldotna       | 200          | 11B / C      | 10.0        |               | 32,911          | 468   | 1,843       | 27,687          | 62,909      | 0          |

Note: If a position is split, an asterisk (\*) will appear in the Split/Count column. If the split position is also counted in the component, two asterisks (\*\*) will appear in this column. [No valid job title] appearing in the Job Class Title indicates that the PCN has an invalid class code or invalid range for the class code effective date of this scenario.

**Personal Services Expenditure Detail**  
**Department of Fish and Game**

**Scenario:** FY2022 Governor (17280)  
**Component:** Sport Fisheries (464)  
**RDU:** Sport Fisheries (145)

| PCN     | Job Class Title                | Time Status | Retire Code | Barg Unit | Location  | Salary Sched | Range / Step | Comp Months | Split / Count | Annual Salaries | COLA  | Premium Pay | Annual Benefits | Total Costs | UGF Amount |
|---------|--------------------------------|-------------|-------------|-----------|-----------|--------------|--------------|-------------|---------------|-----------------|-------|-------------|-----------------|-------------|------------|
| 11-4250 | Fishery Biologist II           | FT          | A           | SS        | Fairbanks | 203          | 16F / J      | 12.0        |               | 69,098          | 0     | 0           | 42,745          | 111,843     | 0          |
| 11-4252 | Fish & Wildlife Technician II  | PT          | A           | GP        | Palmer    | 200          | 9A / B       | 5.5         |               | 15,414          | 259   | 3,834       | 15,274          | 34,781      | 0          |
| 11-4253 | Fish & Wildlife Technician III | PT          | A           | GP        | Soldotna  | 200          | 11J / K      | 3.0         |               | 12,056          | 173   | 798         | 9,146           | 22,173      | 0          |
| 11-4254 | Fishery Biologist III          | FT          | A           | GP        | Fairbanks | 99           | 18N / O      | 12.0        |               | 91,009          | 1,225 | 0           | 50,289          | 142,523     | 0          |
| 11-4255 | Fishery Biologist I            | PT          | A           | GP        | Fairbanks | 203          | 14C / D      | 10.0        |               | 41,588          | 765   | 15,270      | 35,337          | 92,960      | 0          |
| 11-4256 | Fishery Biologist I            | PT          | A           | GP        | Anchorage | 200          | 14D / E      | 9.6         |               | 40,073          | 570   | 2,306       | 29,700          | 72,649      | 0          |
| 11-4257 | Fish & Wildlife Technician II  | PT          | A           | GP        | Yakutat   | 200          | 9A           | 4.0         |               | 11,057          | 166   | 1,275       | 7,400           | 19,898      | 0          |
| 11-4258 | Fish & Game Program Technician | FT          | A           | GP        | Sitka     | 105          | 12N          | 12.0        |               | 60,236          | 858   | 3,475       | 40,841          | 105,410     | 0          |
| 11-4262 | Program Coordinator II         | FT          | A           | SS        | Anchorage | 200          | 20K          | 12.0        |               | 92,123          | 0     | 0           | 50,714          | 142,837     | 0          |
| 11-4265 | Administrative Assistant II    | FT          | A           | GP        | Anchorage | 200          | 14D / E      | 12.0        |               | 51,025          | 687   | 0           | 36,450          | 88,162      | 0          |
| 11-4266 | Fish & Wildlife Technician II  | PT          | A           | GP        | Douglas   | 205          | 9D           | 4.0         |               | 12,682          | 320   | 11,120      | 11,370          | 35,492      | 0          |
| 11-4267 | Research Analyst III           | FT          | A           | GP        | Anchorage | 200          | 18L / M      | 12.0        |               | 82,046          | 1,104 | 0           | 47,186          | 130,336     | 0          |
| 11-4269 | Fishery Biologist III          | FT          | A           | SS        | Ketchikan | 200          | 18L / M      | 12.0        |               | 83,847          | 0     | 0           | 47,850          | 131,697     | 0          |
| 11-4270 | Fish & Game Program Technician | FT          | A           | GP        | Ketchikan | 200          | 12E / F      | 12.0        |               | 45,726          | 634   | 1,387       | 35,096          | 82,843      | 0          |
| 11-4271 | Administrative Officer II      | FT          | A           | SS        | Anchorage | 200          | 19L / M      | 12.0        |               | 91,072          | 0     | 0           | 50,350          | 141,422     | 0          |
| 11-4272 | Fish & Wildlife Technician II  | PT          | A           | GP        | Sitka     | 205          | 9F / G       | 10.5        |               | 35,504          | 486   | 591         | 20,713          | 57,294      | 0          |
| 11-4273 | Fish & Wildlife Technician II  | PT          | A           | GP        | Sitka     | 205          | 9A / B       | 10.5        |               | 31,367          | 429   | 501         | 19,250          | 51,547      | 51,547     |
| 11-4274 | Fish & Wildlife Technician II  | PT          | A           | GP        | Ketchikan | 200          | 9B           | 4.5         |               | 12,819          | 183   | 795         | 8,235           | 22,032      | 9,474      |
| 11-4275 | Fish & Wildlife Technician II  | PT          | A           | GP        | Ketchikan | 200          | 9B / C       | 4.5         |               | 13,199          | 189   | 822         | 8,376           | 22,586      | 9,938      |
| 11-4277 | Office Assistant II            | FT          | A           | GP        | Anchorage | 200          | 10G / J      | 12.0        |               | 42,530          | 573   | 0           | 33,510          | 76,613      | 0          |
| 11-4278 | Biometrician III               | FT          | A           | GP        | Soldotna  | 200          | 20K          | 12.0        |               | 89,739          | 1,208 | 0           | 49,849          | 140,796     | 0          |
| 11-4279 | Fish & Wildlife Technician II  | PT          | A           | GP        | Fairbanks | 203          | 9D / E       | 9.5         |               | 29,864          | 472   | 5,163       | 26,999          | 62,498      | 0          |
| 11-4284 | Fish & Wildlife Technician III | PT          | A           | GP        | Kodiak    | 211          | 11B / C      | 6.5         |               | 23,375          | 339   | 1,780       | 18,884          | 44,378      | 0          |
| 11-4285 | Fish & Wildlife Technician II  | PT          | A           | GP        | Palmer    | 200          | 9C / D       | 7.3         |               | 21,696          | 390   | 7,245       | 21,447          | 50,778      | 0          |
| 11-4286 | Fish & Wildlife Technician III | PT          | A           | GP        | Palmer    | 200          | 11B / C      | 6.3         |               | 20,635          | 370   | 6,817       | 19,366          | 47,188      | 0          |
| 11-4288 | Fish & Wildlife Technician II  | PT          | A           | GP        | Palmer    | 200          | 9B / C       | 5.0         |               | 14,581          | 220   | 1,787       | 13,494          | 30,082      | 0          |
| 11-4289 | Fishery Biologist II           | FT          | A           | SS        | Homer     | 200          | 16D / E      | 12.0        |               | 63,762          | 0     | 134         | 40,945          | 104,841     | 0          |
| 11-4292 | Fish & Wildlife Technician II  | PT          | A           | GP        | Palmer    | 200          | 9D           | 4.5         |               | 13,587          | 208   | 1,894       | 12,404          | 28,093      | 0          |
| 11-4293 | Fish & Wildlife Technician II  | PT          | A           | GP        | Palmer    | 200          | 9E / F       | 4.3         |               | 13,629          | 273   | 6,627       | 13,744          | 34,273      | 0          |
| 11-4294 | Habitat Biologist III          | FT          | A           | GP        | Anchorage | 200          | 18C / D      | 12.0        |               | 65,626          | 886   | 200         | 41,573          | 108,285     | 18,409     |
| 11-4296 | Fish & Wildlife Technician III | PT          | A           | GP        | Haines    | 200          | 11G          | 4.0         |               | 15,028          | 342   | 10,404      | 11,934          | 37,708      | 0          |
| 11-4297 | Fish & Wildlife Technician II  | PT          | A           | GP        | Homer     | 200          | 9B / C       | 4.0         |               | 11,733          | 162   | 270         | 10,418          | 22,583      | 0          |
| 11-4298 | Fish & Wildlife Technician III | PT          | A           | GP        | Homer     | 200          | 11B          | 5.5         |               | 17,661          | 250   | 889         | 15,032          | 33,832      | 0          |
| 11-4299 | Fish & Wildlife Technician III | PT          | A           | GP        | Homer     | 200          | 11G / J      | 7.0         |               | 26,611          | 372   | 1,040       | 20,531          | 48,554      | 0          |
| 11-4300 | Fish & Wildlife Technician II  | PT          | A           | GP        | Homer     | 200          | 9A / B       | 5.0         |               | 13,905          | 191   | 255         | 12,730          | 27,081      | 0          |
| 11-4301 | Fish & Wildlife Technician II  | PT          | A           | GP        | Soldotna  | 200          | 9A / B       | 4.0         |               | 11,395          | 171   | 1,338       | 10,670          | 23,574      | 0          |
| 11-4302 | Fishery Biologist I            | FT          | A           | GP        | Palmer    | 200          | 14G          | 11.0        |               | 50,819          | 810   | 9,381       | 38,060          | 99,070      | 0          |

Note: If a position is split, an asterisk (\*) will appear in the Split/Count column. If the split position is also counted in the component, two asterisks (\*\*) will appear in this column. [No valid job title] appearing in the Job Class Title indicates that the PCN has an invalid class code or invalid range for the class code effective date of this scenario.

**Personal Services Expenditure Detail**  
**Department of Fish and Game**

**Scenario:** FY2022 Governor (17280)  
**Component:** Sport Fisheries (464)  
**RDU:** Sport Fisheries (145)

| PCN     | Job Class Title                | Time Status | Retire Code | Barg Unit | Location   | Salary Sched | Range / Step | Comp Months | Split / Count | Annual Salaries | COLA  | Premium Pay | Annual Benefits | Total Costs | UGF Amount |
|---------|--------------------------------|-------------|-------------|-----------|------------|--------------|--------------|-------------|---------------|-----------------|-------|-------------|-----------------|-------------|------------|
| 11-4303 | Fish & Wildlife Technician II  | PT          | A           | GP        | Fairbanks  | 203          | 9A / B       | 5.0         |               | 14,323          | 212   | 1,445       | 13,287          | 29,267      | 0          |
| 11-4305 | Fish & Wildlife Technician II  | PT          | A           | GP        | Soldotna   | 200          | 9D           | 3.5         |               | 10,567          | 146   | 300         | 9,242           | 20,255      | 0          |
| 11-4306 | Fish & Wildlife Technician II  | PT          | A           | GP        | Soldotna   | 200          | 9A           | 3.5         |               | 9,674           | 135   | 382         | 8,961           | 19,152      | 0          |
| 11-4307 | Fish & Wildlife Technician II  | PT          | A           | GP        | Anchorage  | 200          | 9F / G       | 9.6         |               | 30,976          | 441   | 1,778       | 26,368          | 59,563      | 0          |
| 11-4308 | Fish & Wildlife Technician II  | PT          | A           | GP        | Palmer     | 200          | 9J / K       | 3.0         |               | 10,610          | 158   | 1,136       | 8,763           | 20,667      | 0          |
| 11-4311 | Fishery Biologist I            | PT          | A           | GP        | Homer      | 200          | 14A          | 9.6         |               | 36,067          | 502   | 1,214       | 27,935          | 65,718      | 0          |
| 11-4312 | Accounting Technician I        | FT          | A           | GP        | Fairbanks  | 203          | 12J          | 12.0        |               | 51,734          | 763   | 4,974       | 38,417          | 95,888      | 0          |
| 11-4313 | Fish & Wildlife Technician II  | PT          | A           | GP        | Haines     | 200          | 9G / J       | 3.5         |               | 11,776          | 179   | 1,525       | 7,344           | 20,824      | 20,824     |
| 11-4315 | Analyst/Programmer IV          | FT          | A           | GP        | Anchorage  | 99           | 20N          | 12.0        |               | 99,253          | 1,336 | 0           | 53,142          | 153,731     | 0          |
| 11-4316 | Analyst/Programmer V           | FT          | A           | SS        | Anchorage  | 99           | 22N / O      | 12.0        |               | 118,679         | 0     | 0           | 59,905          | 178,584     | 0          |
| 11-4320 | Engineer II, Dec               | FT          | A           | SS        | Anchorage  | 99           | 23O / P      | 12.0        |               | 132,662         | 0     | 0           | 64,745          | 197,407     | 0          |
| 11-4321 | Fishery Biologist III          | FT          | A           | GP        | Douglas    | 205          | 18P / Q      | 12.0        |               | 97,680          | 1,335 | 1,488       | 53,112          | 153,615     | 46,085     |
| 11-4322 | Fishery Biologist II           | FT          | A           | SS        | Ketchikan  | 200          | 16E / F      | 12.0        |               | 65,915          | 0     | 13,815      | 46,425          | 126,155     | 0          |
| 11-4323 | Fish & Wildlife Technician II  | PT          | A           | GP        | Douglas    | 205          | 9B / C       | 10.0        |               | 30,092          | 433   | 2,071       | 18,961          | 51,557      | 0          |
| 11-4324 | Fish & Wildlife Technician II  | PT          | A           | GP        | Douglas    | 205          | 9C           | 2.0         |               | 6,159           | 175   | 6,822       | 6,059           | 19,215      | 0          |
| 11-4326 | Fish & Wildlife Technician III | PT          | A           | GP        | Douglas    | 205          | 11E          | 2.0         |               | 7,391           | 212   | 8,322       | 7,004           | 22,929      | 0          |
| 11-4328 | Fish & Wildlife Technician III | PT          | A           | GP        | Haines     | 200          | 11G          | 4.0         |               | 15,028          | 342   | 10,404      | 11,934          | 37,708      | 0          |
| 11-4329 | Fish & Wildlife Technician II  | PT          | A           | GP        | Craig      | 200          | 9A / B       | 5.0         |               | 13,863          | 248   | 4,563       | 10,292          | 28,966      | 8,400      |
| 11-4331 | Fish & Wildlife Technician III | PT          | A           | GP        | Craig      | 200          | 11A / B      | 2.5         |               | 8,028           | 177   | 5,113       | 8,463           | 21,781      | 0          |
| 11-4332 | Fish & Wildlife Technician II  | PT          | A           | GP        | Wrangell   | 200          | 9A           | 2.5         |               | 6,910           | 179   | 6,378       | 6,556           | 20,023      | 0          |
| 11-4333 | Fish & Wildlife Technician III | PT          | A           | GP        | Elfin Cove | 200          | 11C / D      | 10.5        |               | 35,310          | 489   | 1,038       | 20,801          | 57,638      | 28,819     |
| 11-4335 | Fish & Wildlife Technician III | PT          | A           | GP        | Anchorage  | 200          | 11A / B      | 9.0         |               | 28,363          | 404   | 1,640       | 24,477          | 54,884      | 0          |
| 11-4336 | Fish & Wildlife Technician III | PT          | A           | GP        | Sitka      | 205          | 11A          | 7.0         |               | 22,943          | 351   | 3,111       | 14,498          | 40,903      | 6,954      |
| 11-4340 | Fish & Wildlife Technician II  | PT          | A           | GP        | Wrangell   | 200          | 9A           | 4.0         |               | 11,057          | 252   | 7,654       | 9,608           | 28,571      | 0          |
| 11-4341 | Fishery Biologist I            | PT          | A           | SS        | Wrangell   | 600          | 14E          | 8.0         |               | 36,594          | 0     | 7,046       | 27,657          | 71,297      | 71,297     |
| 11-4342 | Habitat Biologist II           | PT          | A           | GP        | Douglas    | 205          | 16M / N      | 11.0        |               | 72,249          | 973   | 15          | 42,235          | 115,472     | 0          |
| 11-4344 | Habitat Biologist III          | FT          | A           | SS        | Douglas    | 205          | 18L / M      | 12.0        |               | 88,987          | 0     | 0           | 49,629          | 138,616     | 0          |
| 11-4345 | Project Assistant              | FT          | A           | SS        | Anchorage  | 600          | 16B / C      | 12.0        |               | 57,801          | 0     | 0           | 38,835          | 96,636      | 0          |
| 11-4346 | Fisheries Scientist I          | FT          | A           | SS        | Anchorage  | 200          | 22L / M      | 12.0        |               | 110,996         | 0     | 0           | 57,246          | 168,242     | 0          |
| 11-4347 | Accounting Technician II       | FT          | A           | GP        | Juneau     | 205          | 14J          | 12.0        |               | 60,645          | 816   | 0           | 39,780          | 101,241     | 0          |
| 11-4350 | Education Associate III        | FT          | A           | GP        | Fairbanks  | 203          | 17L / M      | 12.0        |               | 78,478          | 1,089 | 2,401       | 46,783          | 128,751     | 0          |
| 11-4352 | Publications Specialist II     | FT          | A           | GP        | Anchorage  | 200          | 16G / J      | 12.0        |               | 66,424          | 894   | 0           | 41,780          | 109,098     | 0          |
| 11-4354 | Fishery Biologist II           | FT          | A           | GP        | Anchorage  | 200          | 16J / K      | 12.0        |               | 68,428          | 921   | 0           | 42,473          | 111,822     | 0          |
| 11-4356 | Program Coordinator II         | FT          | A           | SS        | Anchorage  | 99           | 20P / Q      | 12.0        |               | 114,360         | 0     | 0           | 58,410          | 172,770     | 0          |
| 11-4357 | Administrative Assistant II    | FT          | A           | GP        | Anchorage  | 200          | 14M / N      | 12.0        |               | 63,656          | 857   | 0           | 40,822          | 105,335     | 0          |
| 11-5006 | Fishery Biologist III          | FT          | A           | GP        | Anchorage  | 200          | 18E / F      | 12.0        |               | 68,586          | 923   | 0           | 42,528          | 112,037     | 0          |
| 11-5010 | Fishery Biologist III          | FT          | A           | GP        | Douglas    | 205          | 18D / E      | 12.0        |               | 71,299          | 961   | 100         | 43,502          | 115,862     | 0          |
| 11-5022 | Information System Coordinator | FT          | A           | GP        | Anchorage  | 200          | 18C / C      | 12.0        |               | 63,882          | 860   | 0           | 40,900          | 105,642     | 0          |

Note: If a position is split, an asterisk (\*) will appear in the Split/Count column. If the split position is also counted in the component, two asterisks (\*\*) will appear in this column. [No valid job title] appearing in the Job Class Title indicates that the PCN has an invalid class code or invalid range for the class code effective date of this scenario.

**Personal Services Expenditure Detail**  
**Department of Fish and Game**

**Scenario:** FY2022 Governor (17280)  
**Component:** Sport Fisheries (464)  
**RDU:** Sport Fisheries (145)

| PCN     | Job Class Title                | Time Status | Retire Code | Barg Unit | Location   | Salary Sched | Range / Step | Comp Months | Split / Count | Annual Salaries | COLA  | Premium Pay | Annual Benefits | Total Costs | UGF Amount |
|---------|--------------------------------|-------------|-------------|-----------|------------|--------------|--------------|-------------|---------------|-----------------|-------|-------------|-----------------|-------------|------------|
| 11-5029 | Fish & Game Program Technician | PT          | A           | GP        | Yakutat    | 200          | 12A          | 3.0         | *             | 9,916           | 180   | 0           | 8,130           | 18,226      | 18,226     |
| 11-5033 | Fishery Biologist III          | FT          | A           | SS        | Petersburg | 200          | 18J / K      | 12.0        |               | 80,662          | 0     | 169         | 46,806          | 127,637     | 0          |
| 11-5046 | Biometrician III               | FT          | A           | GP        | Douglas    | 205          | 20E / F      | 12.0        |               | 84,903          | 1,143 | 0           | 48,175          | 134,221     | 0          |
| 11-5047 | Fishery Biologist IV           | FT          | A           | SS        | Fairbanks  | 203          | 20O          | 12.0        |               | 107,827         | 0     | 2,007       | 56,844          | 166,678     | 0          |
| 11-5072 | Information Officer II         | FT          | A           | SS        | Fairbanks  | 99           | 17O / O      | 12.0        |               | 97,513          | 0     | 0           | 52,580          | 150,093     | 0          |
| 11-5076 | Fishery Biologist I            | PT          | A           | GP        | Douglas    | 205          | 14D          | 8.0         |               | 34,983          | 634   | 12,109      | 22,562          | 70,288      | 70,288     |
| 11-5102 | Information Officer II         | FT          | A           | SS        | Anchorage  | 200          | 17F          | 12.0        |               | 70,699          | 0     | 0           | 43,299          | 113,998     | 0          |
| 11-5103 | Gis Analyst III                | FT          | A           | GP        | Anchorage  | 200          | 19G / J      | 12.0        |               | 81,257          | 1,094 | 0           | 46,913          | 129,264     | 10,341     |
| 11-5110 | Fishery Biologist I            | FT          | A           | SS        | Sitka      | 205          | 14A / B      | 12.0        |               | 50,984          | 0     | 576         | 36,675          | 88,235      | 0          |
| 11-5139 | Fish & Game Coordinator        | FT          | A           | SS        | Juneau     | 99           | 22P          | 12.0        |               | 132,185         | 0     | 100         | 64,614          | 196,899     | 0          |
| 11-5145 | Publications Specialist III    | FT          | A           | SS        | Anchorage  | 200          | 19J / K      | 12.0        |               | 85,765          | 0     | 0           | 48,514          | 134,279     | 0          |
| 11-5147 | Fishery Biologist IV           | FT          | A           | SS        | Juneau     | 205          | 20L          | 12.0        |               | 99,882          | 0     | 0           | 53,399          | 153,281     | 0          |
| 11-5149 | Mts/Bfc Jrny I                 | FT          | A           | LL        | Kasilof    | 2CC          | 53C / D      | 12.0        |               | 55,936          | 0     | 0           | 38,046          | 93,982      | 0          |
| 11-5157 | Fishery Biologist II           | FT          | A           | SS        | Douglas    | 205          | 16B / C      | 12.0        |               | 61,854          | 0     | 557         | 40,431          | 102,842     | 102,842    |
| 11-5171 | Fish & Wildlife Technician II  | PT          | A           | GP        | Palmer     | 200          | 9A / A       | 9.0         |               | 24,877          | 472   | 10,206      | 26,235          | 61,790      | 0          |
| 11-5173 | Habitat Biologist I            | FT          | A           | SS        | Fairbanks  | 99           | 14P          | 12.0        |               | 78,630          | 0     | 18,052      | 52,292          | 148,974     | 25,326     |
| 11-5182 | Fishery Biologist II           | FT          | A           | SS        | Anchorage  | 200          | 16J          | 12.0        |               | 68,245          | 0     | 0           | 42,450          | 110,695     | 0          |
| 11-5185 | Fish & Wildlife Technician III | PT          | A           | GP        | Anchorage  | 200          | 11E          | 8.0         |               | 28,158          | 405   | 1,949       | 22,947          | 53,459      | 0          |
| 11-5188 | Fish & Wildlife Technician III | PT          | A           | GP        | Soldotna   | 200          | 11E          | 3.5         |               | 12,319          | 191   | 1,888       | 10,398          | 24,796      | 0          |
| 11-5195 | Fish & Game Program Technician | FT          | A           | GP        | Petersburg | 200          | 12P          | 6.0         | *             | 30,420          | 512   | 600         | 20,131          | 51,663      | 0          |
| 11-5219 | Fish & Wildlife Technician III | PT          | A           | GP        | Soldotna   | 200          | 11G          | 3.3         |               | 12,398          | 205   | 2,801       | 10,428          | 25,832      | 0          |
| 11-5233 | Fishery Biologist I            | FT          | A           | GP        | Kodiak     | 211          | 14A / B      | 12.0        |               | 50,252          | 676   | 0           | 36,183          | 87,111      | 0          |
| 11-5236 | Fish & Wildlife Technician III | PT          | A           | GP        | Ketchikan  | 200          | 11F          | 5.5         |               | 19,957          | 503   | 17,417      | 17,241          | 55,118      | 0          |
| 11-5239 | Fish & Wildlife Technician II  | PT          | A           | GP        | Soldotna   | 200          | 9A           | 3.3         |               | 9,122           | 128   | 382         | 8,457           | 18,089      | 0          |
| 11-5244 | Fishery Biologist II           | FT          | A           | SS        | Soldotna   | 99           | 16M / N      | 12.0        |               | 76,710          | 0     | 0           | 45,380          | 122,090     | 0          |
| 11-5247 | Fish & Wildlife Technician III | PT          | A           | GP        | Fairbanks  | 203          | 11C / D      | 9.5         |               | 32,914          | 553   | 8,170       | 29,095          | 70,732      | 0          |
| 11-5255 | Habitat Biologist IV           | FT          | A           | SS        | Anchorage  | 200          | 20L / M      | 12.0        |               | 96,668          | 0     | 0           | 52,287          | 148,955     | 148,955    |
| 11-5263 | Fish & Wildlife Technician II  | PT          | A           | GP        | Fairbanks  | 203          | 9D           | 9.0         |               | 27,992          | 450   | 5,450       | 25,667          | 59,559      | 0          |
| 11-5264 | Fish & Wildlife Technician IV  | PT          | A           | GP        | Fairbanks  | 203          | 13J          | 9.0         |               | 41,652          | 621   | 4,485       | 30,061          | 76,819      | 0          |
| 11-5268 | Fishery Biologist II           | FT          | A           | SS        | Homer      | 200          | 16B / C      | 12.0        |               | 59,211          | 0     | 67          | 39,346          | 98,624      | 0          |
| 11-5278 | Fishery Biologist I            | PT          | A           | GP        | Palmer     | 200          | 14J          | 11.0        |               | 52,946          | 778   | 4,887       | 37,240          | 95,851      | 62,303     |
| 11-5283 | Fish & Wildlife Technician II  | PT          | A           | GP        | Palmer     | 200          | 9B           | 5.0         |               | 14,243          | 216   | 1,823       | 13,390          | 29,672      | 0          |
| 11-5285 | Fish & Wildlife Technician II  | PT          | A           | GP        | Palmer     | 200          | 9A / B       | 4.7         |               | 13,389          | 262   | 6,047       | 14,086          | 33,784      | 0          |
| 11-5288 | Fish & Wildlife Technician III | PT          | A           | GP        | Ketchikan  | 200          | 11A / B      | 2.0         |               | 6,422           | 140   | 4,001       | 5,173           | 15,736      | 0          |
| 11-5291 | Fish & Wildlife Technician II  | PT          | A           | GP        | Haines     | 200          | 9F           | 4.0         |               | 12,844          | 293   | 8,892       | 10,655          | 32,684      | 0          |
| 11-5298 | Fish & Wildlife Technician III | PT          | A           | GP        | Fairbanks  | 203          | 11L          | 1.5         |               | 6,445           | 87    | 0           | 4,579           | 11,111      | 0          |
| 11-5301 | Fish & Wildlife Technician II  | PT          | A           | GP        | Kodiak     | 211          | 9B           | 5.0         |               | 15,811          | 231   | 1,313       | 13,756          | 31,111      | 0          |

Note: If a position is split, an asterisk (\*) will appear in the Split/Count column. If the split position is also counted in the component, two asterisks (\*\*) will appear in this column. [No valid job title] appearing in the Job Class Title indicates that the PCN has an invalid class code or invalid range for the class code effective date of this scenario.

**Personal Services Expenditure Detail**  
**Department of Fish and Game**

**Scenario:** FY2022 Governor (17280)  
**Component:** Sport Fisheries (464)  
**RDU:** Sport Fisheries (145)

| PCN     | Job Class Title                | Time Status | Retire Code | Barg Unit | Location                          | Salary Sched | Range / Step | Comp Months | Split / Count | Annual Salaries | COLA  | Premium Pay | Annual Benefits | Total Costs | UGF Amount |
|---------|--------------------------------|-------------|-------------|-----------|-----------------------------------|--------------|--------------|-------------|---------------|-----------------|-------|-------------|-----------------|-------------|------------|
| 11-5302 | Fish & Wildlife Technician III | PT          | A           | GP        | Palmer                            | 200          | 11E / F      | 4.5         |               | 16,329          | 250   | 2,278       | 13,486          | 32,343      | 0          |
| 11-5304 | Fish & Wildlife Technician III | PT          | A           | GP        | Fairbanks                         | 203          | 11B          | 4.0         |               | 13,228          | 229   | 3,754       | 12,141          | 29,352      | 0          |
| 11-5311 | Fish & Wildlife Technician III | PT          | A           | GP        | Fairbanks                         | 203          | 11E / F      | 10.5        |               | 39,076          | 538   | 913         | 30,282          | 70,809      | 0          |
| 11-5320 | Mts/Bfc Jrny I                 | PT          | A           | LL        | Palmer                            | 2BB          | 53L          | 10.0        |               | 55,092          | 0     | 1,430       | 35,134          | 91,656      | 0          |
| 11-5328 | Fish & Wildlife Technician II  | PT          | A           | GP        | Anchorage                         | 200          | 9A           | 4.0         |               | 11,057          | 159   | 775         | 10,359          | 22,350      | 22,350     |
| 11-5337 | Fishery Biologist I            | FT          | A           | GP        | Juneau                            | 205          | 14B / C      | 12.0        |               | 49,647          | 668   | 0           | 35,973          | 86,288      | 0          |
| 11-5347 | Fish & Wildlife Technician II  | PT          | A           | GP        | Soldotna                          | 200          | 9A           | 2.6         |               | 7,187           | 104   | 530         | 6,742           | 14,563      | 0          |
| 11-5361 | Fish & Wildlife Technician II  | PT          | A           | GP        | Soldotna                          | 200          | 9A / B       | 10.5        |               | 29,911          | 413   | 788         | 27,066          | 58,178      | 0          |
| 11-6030 | Administrative Officer I       | FT          | A           | SS        | Douglas                           | 205          | 17C / D      | 12.0        |               | 69,014          | 0     | 0           | 42,716          | 111,730     | 0          |
| 11-6052 | Habitat Biologist III          | FT          | A           | SS        | Anchorage                         | 200          | 18L / L      | 12.0        |               | 83,283          | 0     | 0           | 47,655          | 130,938     | 0          |
| 11-6055 | Fish & Game Program Technician | FT          | A           | GP        | Craig                             | 99           | 12N          | 4.0         | *             | 19,621          | 351   | 1,812       | 13,681          | 35,465      | 35,465     |
| 11-6077 | Gis Analyst III                | FT          | A           | GP        | Douglas                           | 205          | 19C / C      | 12.0        |               | 71,682          | 965   | 0           | 43,599          | 116,246     | 0          |
| 11-6081 | Program Coordinator I          | FT          | A           | GP        | Anchorage                         | 200          | 18E / F      | 12.0        |               | 69,643          | 937   | 0           | 42,894          | 113,474     | 0          |
| 11-6087 | Analyst/Programmer IV          | FT          | A           | GP        | Anchorage                         | 200          | 20L          | 12.0        |               | 92,664          | 1,247 | 0           | 50,861          | 144,772     | 0          |
| 11-6110 | Librarian I                    | FT          | A           | GP        | Anchorage                         | 200          | 16C / D      | 12.0        |               | 57,351          | 772   | 0           | 38,640          | 96,763      | 0          |
| 11-6119 | Gis Analyst II                 | FT          | A           | GP        | Anchorage                         | 200          | 17K          | 12.0        |               | 73,398          | 988   | 0           | 44,193          | 118,579     | 0          |
| 11-6140 | Habitat Biologist II           | FT          | A           | SS        | Anchorage                         | 200          | 16A / B      | 12.0        |               | 57,445          | 0     | 186         | 38,776          | 96,407      | 0          |
| 11-6141 | Program Coordinator II         | FT          | A           | SS        | Anchorage                         | 200          | 20C / C      | 12.0        |               | 78,000          | 0     | 0           | 45,826          | 123,826     | 0          |
| 11-6156 | Fishery Biologist II           | FT          | A           | GP        | Juneau                            | 205          | 16L          | 12.0        |               | 74,471          | 1,002 | 0           | 44,565          | 120,038     | 0          |
| 11-7070 | Fishery Biologist II           | FT          | A           | GP        | Douglas                           | 205          | 16K          | 12.0        |               | 72,131          | 972   | 100         | 43,789          | 116,992     | 0          |
| 11-7074 | Project Assistant              | FT          | A           | GP        | Joint Base Elmendorf - Richardson | 200          | 16C / D      | 12.0        |               | 56,204          | 757   | 0           | 38,243          | 95,204      | 0          |
| 11-7076 | Gis Analyst II                 | FT          | A           | GP        | Anchorage                         | 200          | 17B / C      | 12.0        |               | 58,578          | 789   | 0           | 39,064          | 98,431      | 0          |
| 11-7712 | Habitat Biologist II           | FT          | A           | GP        | Anchorage                         | 200          | 16D / E      | 12.0        |               | 59,192          | 797   | 0           | 39,277          | 99,266      | 37,721     |
| 11-7718 | Biometrician II                | FT          | A           | GP        | Anchorage                         | 200          | 19B / C      | 12.0        |               | 66,268          | 892   | 0           | 41,726          | 108,886     | 0          |

Note: If a position is split, an asterisk (\*) will appear in the Split/Count column. If the split position is also counted in the component, two asterisks (\*\*) will appear in this column. [No valid job title] appearing in the Job Class Title indicates that the PCN has an invalid class code or invalid range for the class code effective date of this scenario.

**Personal Services Expenditure Detail**  
**Department of Fish and Game**

**Scenario:** FY2022 Governor (17280)  
**Component:** Sport Fisheries (464)  
**RDU:** Sport Fisheries (145)

| PCN | Job Class Title                 | Time Status            | Retire Code | Barg Unit      | Location | Salary Sched | Range / Step | Comp Months | Split / Count | Annual Salaries | COLA | Premium Pay | Annual Benefits | Total Costs                               | UGF Amount |
|-----|---------------------------------|------------------------|-------------|----------------|----------|--------------|--------------|-------------|---------------|-----------------|------|-------------|-----------------|---|------------|
|     |                                 | <b>Total Positions</b> | <b>New</b>  | <b>Deleted</b> |          |              |              |             |               |                 |      |             |                 | <b>Total Salary Costs:</b>                | 15,710,828 |
|     |                                 |                        |             |                |          |              |              |             |               |                 |      |             |                 | <b>Total COLA:</b>                        | 107,753    |
|     | <b>Full Time Positions:</b>     | 160                    | 0           | 0              |          |              |              |             |               |                 |      |             |                 | <b>Total Premium Pay:</b>                 | 659,833    |
|     | <b>Part Time Positions:</b>     | 143                    | 0           | 0              |          |              |              |             |               |                 |      |             |                 | <b>Total Benefits:</b>                    | 9,883,508  |
|     | <b>Non Permanent Positions:</b> | 0                      | 0           | 0              |          |              |              |             |               |                 |      |             |                 |   |            |
|     | <b>Positions in Component:</b>  | 303                    | 0           | 0              |          |              |              |             |               |                 |      |             |                 |   |            |
|     | <b>Total Component Months:</b>  | 2,810.4                |             |                |          |              |              |             |               |                 |      |             |                 |   |            |
|     |                                 |                        |             |                |          |              |              |             |               |                 |      |             |                 | <b>Total Pre-Vacancy:</b>                 | 26,361,922 |
|     |                                 |                        |             |                |          |              |              |             |               |                 |      |             |                 | <b>Minus Vacancy Adjustment of 0.34%:</b> | (88,722)   |
|     |                                 |                        |             |                |          |              |              |             |               |                 |      |             |                 | <b>Total Post-Vacancy:</b>                | 26,273,200 |
|     |                                 |                        |             |                |          |              |              |             |               |                 |      |             |                 | <b>Plus Lump Sum Premium Pay:</b>         | 0          |
|     |                                 |                        |             |                |          |              |              |             |               |                 |      |             |                 | <b>Personal Services Line 100:</b>        | 26,273,200 |

| <b>PCN Funding Sources:</b>                | <b>Pre-Vacancy</b> | <b>Post-Vacancy</b> | <b>Percent</b> |
|--|--------------------|---------------------|----------------|
| 1002 Federal Receipts                      | 12,796,890         | 12,753,821          | 48.54%         |
| 1003 General Fund Match                    | 427,656            | 426,217             | 1.62%          |
| 1004 General Fund Receipts                 | 1,083,968          | 1,080,320           | 4.11%          |
| 1007 Interagency Receipts                  | 137,666            | 137,203             | 0.52%          |
| 1024 Fish and Game Fund                    | 11,331,254         | 11,293,119          | 42.98%         |
| 1061 Capital Improvement Project Receipts  | 334,342            | 333,217             | 1.27%          |
| 1108 Statutory Designated Program Receipts | 250,145            | 249,303             | 0.95%          |
| <b>Total PCN Funding:</b>                  | <b>26,361,922</b>  | <b>26,273,200</b>   | <b>100.00%</b> |

Note: If a position is split, an asterisk (\*) will appear in the Split/Count column. If the split position is also counted in the component, two asterisks (\*\*) will appear in this column. [No valid job title] appearing in the Job Class Title indicates that the PCN has an invalid class code or invalid range for the class code effective date of this scenario.

Department of Fish and Game  
464 - Sport Fisheries  
Unit – Headquarters Combined (Juneau & Anchorage)  
FY2022 Governor Budget

Continued from  
another Component

11-4001  
DIVISION DIRECTOR  
R27  
ANCHORAGE  
PX

11-4063  
ASSISTANT DIRECTOR,  
DEPARTMENT OF FISH & GAME  
R22  
ANCHORAGE  
CL

11-6156  
FISHERY BIOLOGIST II  
R16  
JUNEAU  
CL

11-4042  
DIVISION OPERATIONS  
MANAGER  
R24  
JUNEAU  
CL

11-4052  
ASSISTANT DIRECTOR,  
DEPARTMENT OF FISH & GAME  
R22  
JUNEAU  
CL

11-4262  
PROGRAM COORDINATOR II  
R20  
JOINT BASE ELMENDORF  
RICHARDSON  
CL

11-6141  
PROGRAM COORDINATOR II  
R20  
ANCHORAGE  
CL

11-4172  
FISHERY BIOLOGIST IV  
R20  
ANCHORAGE  
CL

11-5147  
FISHERY BIOLOGIST IV  
R20  
JUNEAU  
CL

11-4006  
ADMINISTRATIVE  
OPERATIONS MANAGER I  
R22  
JUNEAU  
CL

11-6081  
PROGRAM COORDINATOR I  
R18  
ANCHORAGE  
CL

11-7074  
PROJECT ASSISTANT  
R16  
JOINT BASE ELMENDORF-  
RICHARDSON  
CL

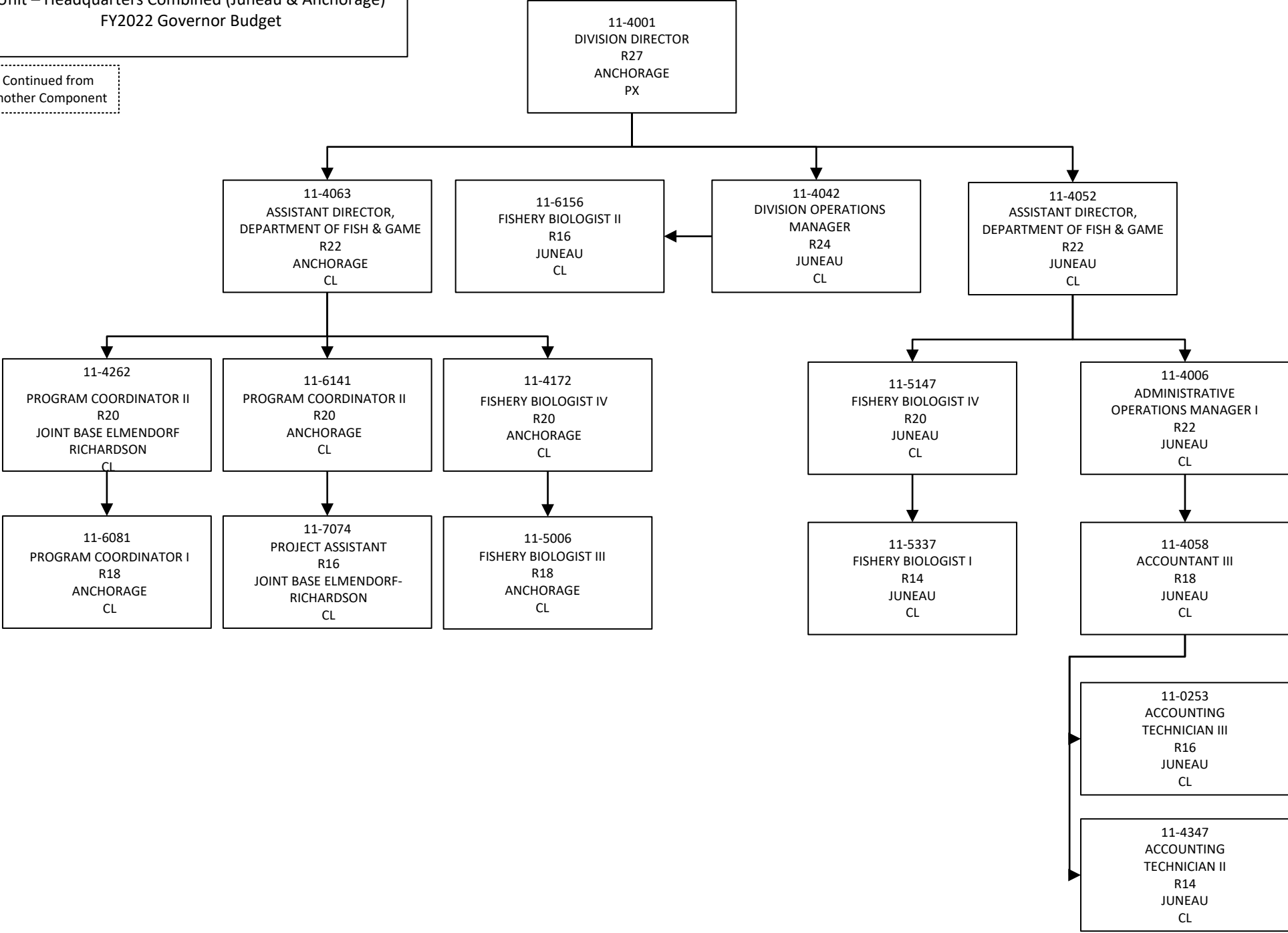
11-5006  
FISHERY BIOLOGIST III  
R18  
ANCHORAGE  
CL

11-5337  
FISHERY BIOLOGIST I  
R14  
JUNEAU  
CL

11-4058  
ACCOUNTANT III  
R18  
JUNEAU  
CL

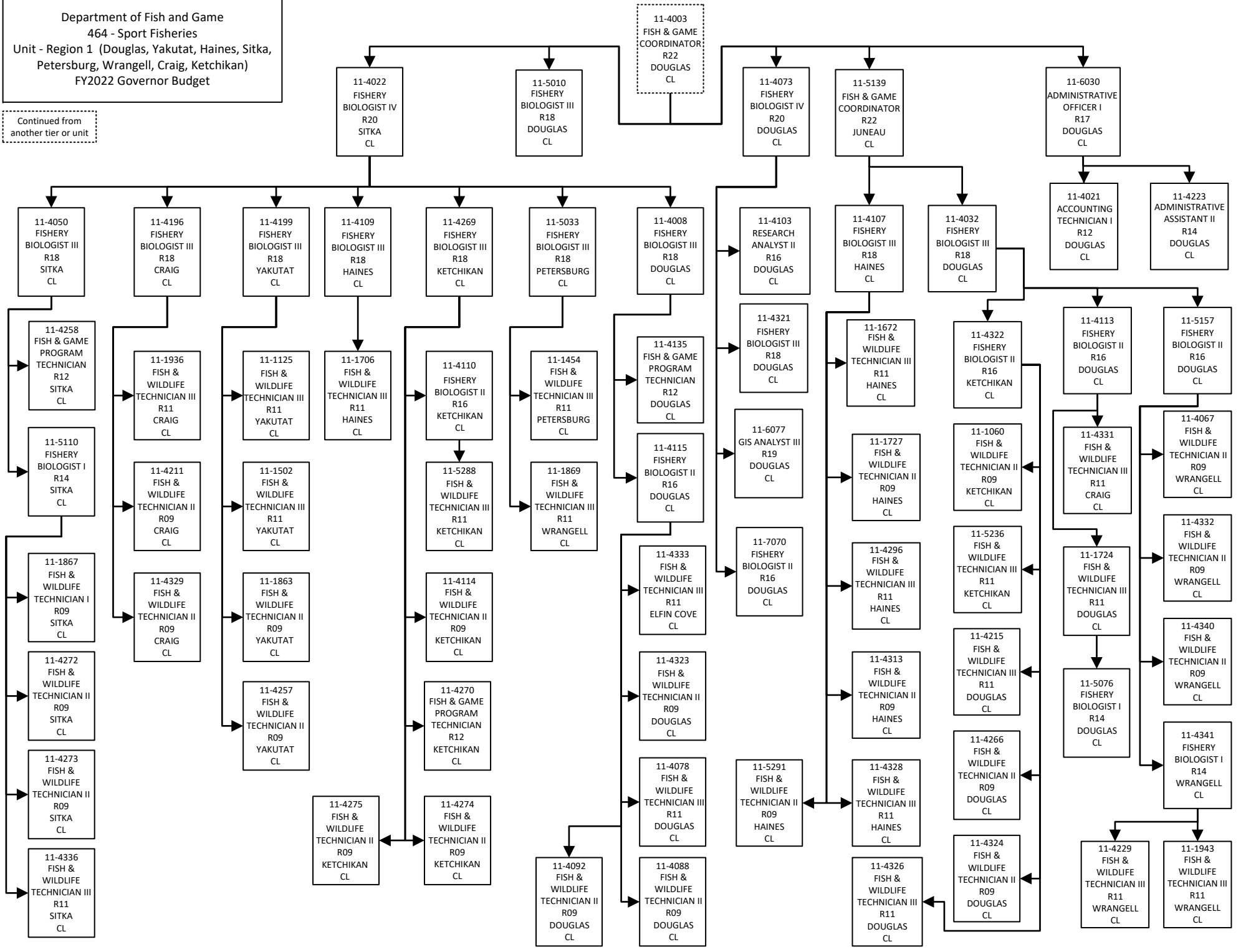
11-0253  
ACCOUNTING  
TECHNICIAN III  
R16  
JUNEAU  
CL

11-4347  
ACCOUNTING  
TECHNICIAN II  
R14  
JUNEAU  
CL



Department of Fish and Game  
 464 - Sport Fisheries  
 Unit - Region 1 (Douglas, Yakutat, Haines, Sitka,  
 Petersburg, Wrangell, Craig, Ketchikan)  
 FY2022 Governor Budget

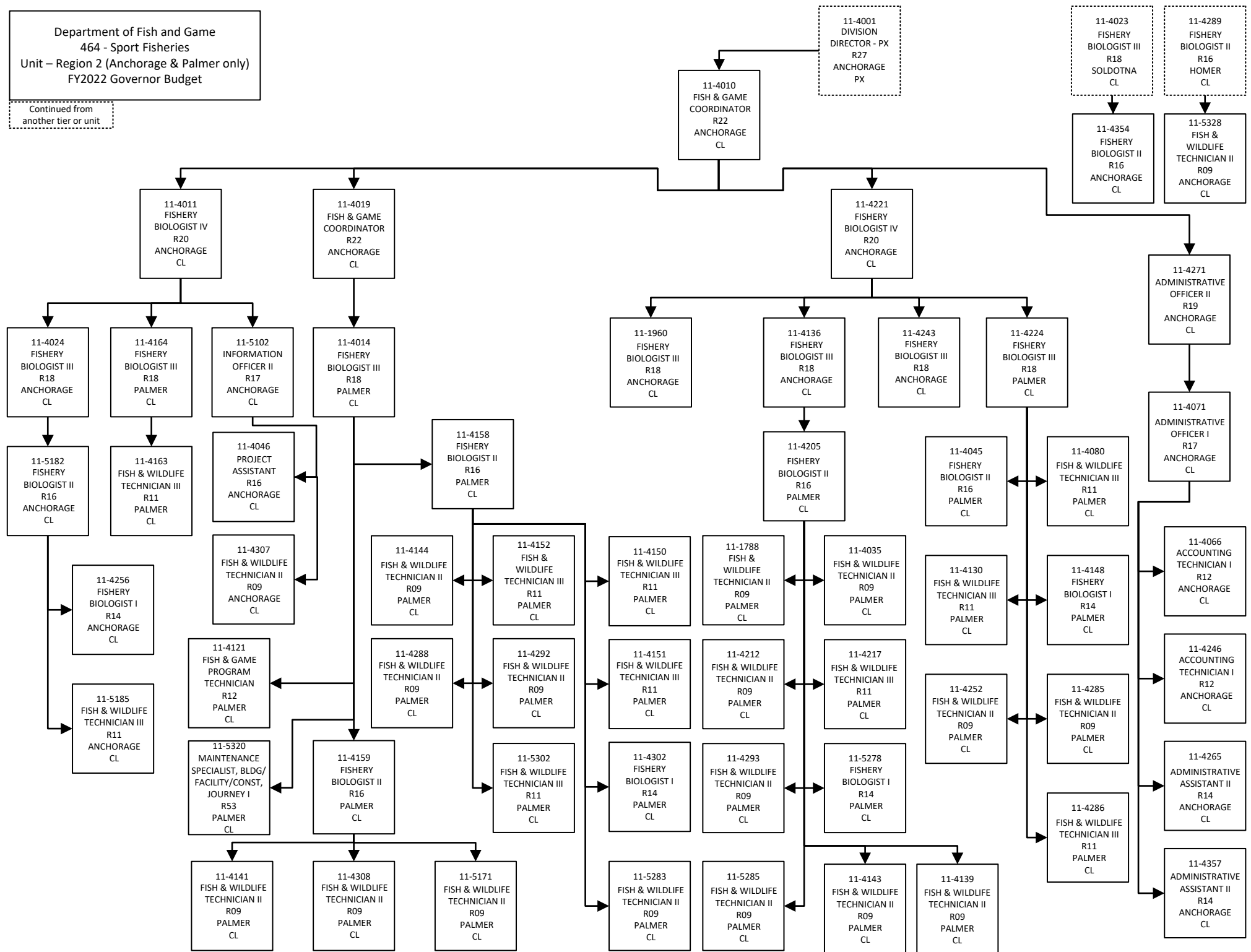
Continued from  
 another tier or unit





Department of Fish and Game  
 464 - Sport Fisheries  
 Unit – Region 2 (Anchorage & Palmer only)  
 FY2022 Governor Budget

Continued from  
 another tier or unit



Department of Fish and Game  
 464 - Sport Fisheries  
 Unit – Region 2 Except Anchorage & Palmer (Dillingham,  
 Kodiak, Homer, Soldotna, Seward & Valdez)  
 FY2022 Governor Budget

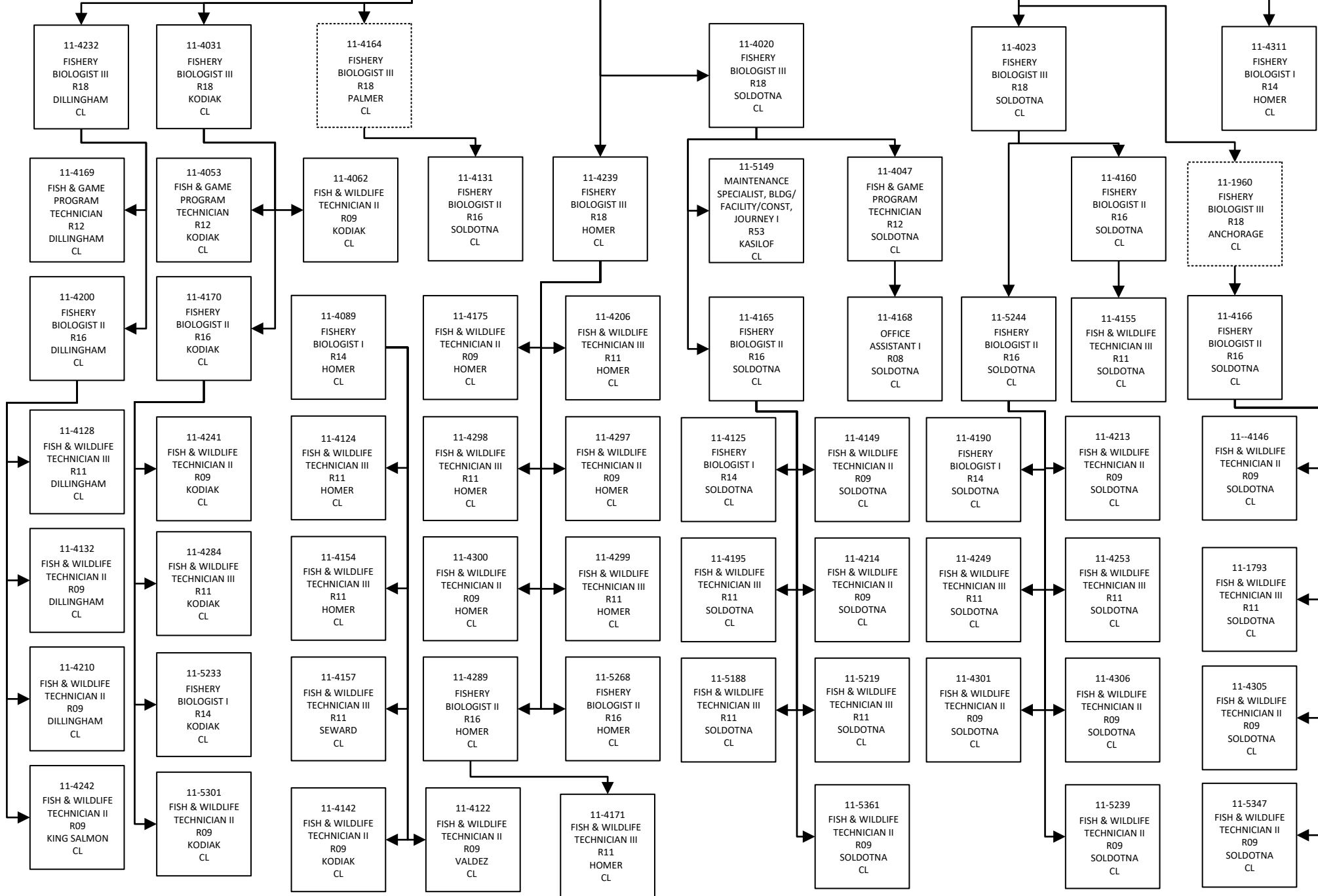
11-4011  
 FISHERY  
 BIOLOGIST IV  
 R20  
 ANCHORAGE  
 CL

11-4019  
 FISH & GAME  
 COORDINATOR  
 R22  
 ANCHORAGE  
 CL

Continued from  
 another tier or unit

11-4221  
 FISHERY  
 BIOLOGIST IV  
 R20  
 ANCHORAGE  
 CL

11-7712  
 HABITAT  
 BIOLOGIST II  
 R16  
 ANCHORAGE  
 CL

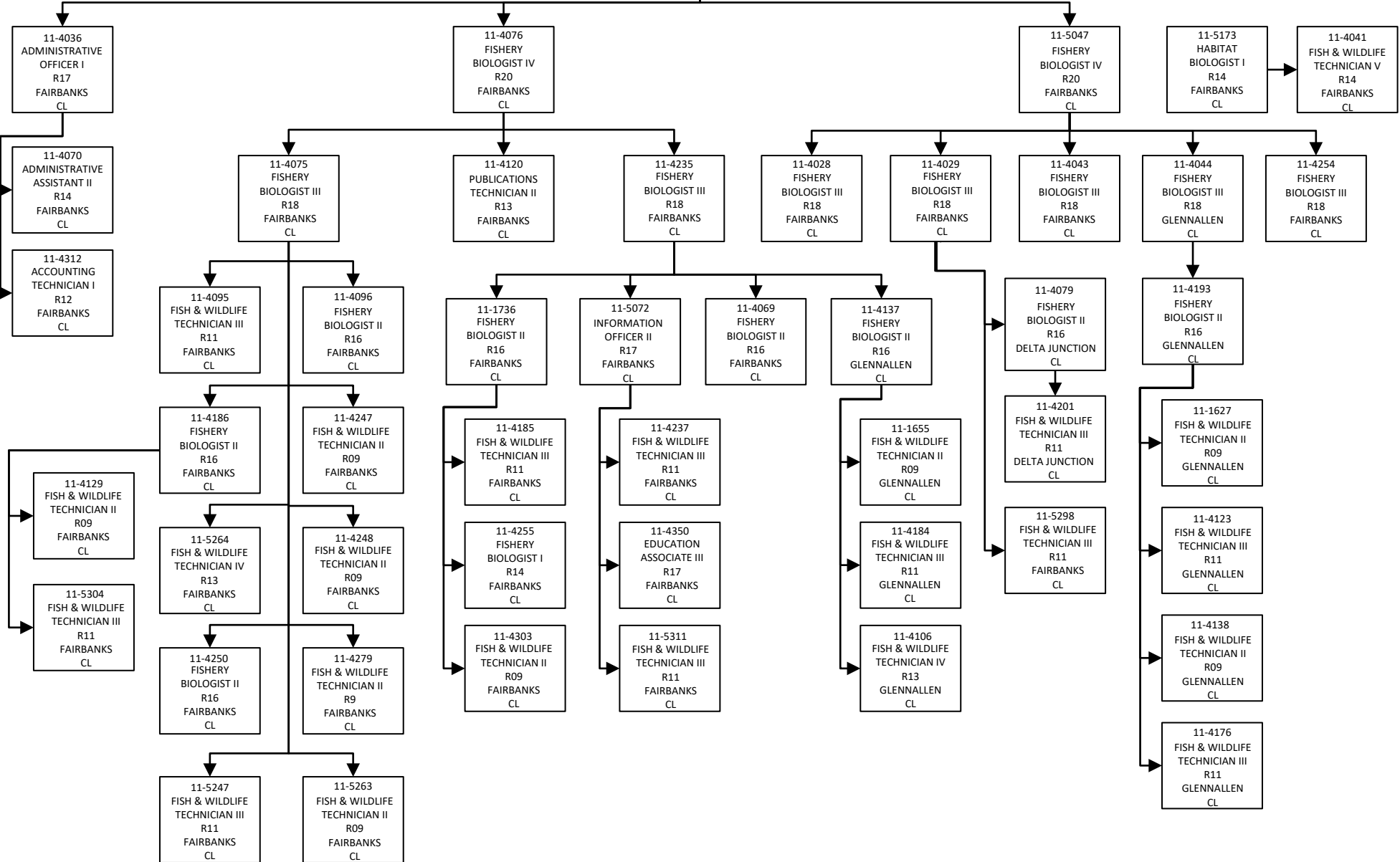


Department of Fish and Game  
 464 - Sport Fisheries  
 Unit – Region 3 Fairbanks, Delta Junction &  
 Glennallen  
 FY2022 Governor Budget

Continued from  
 another tier or unit

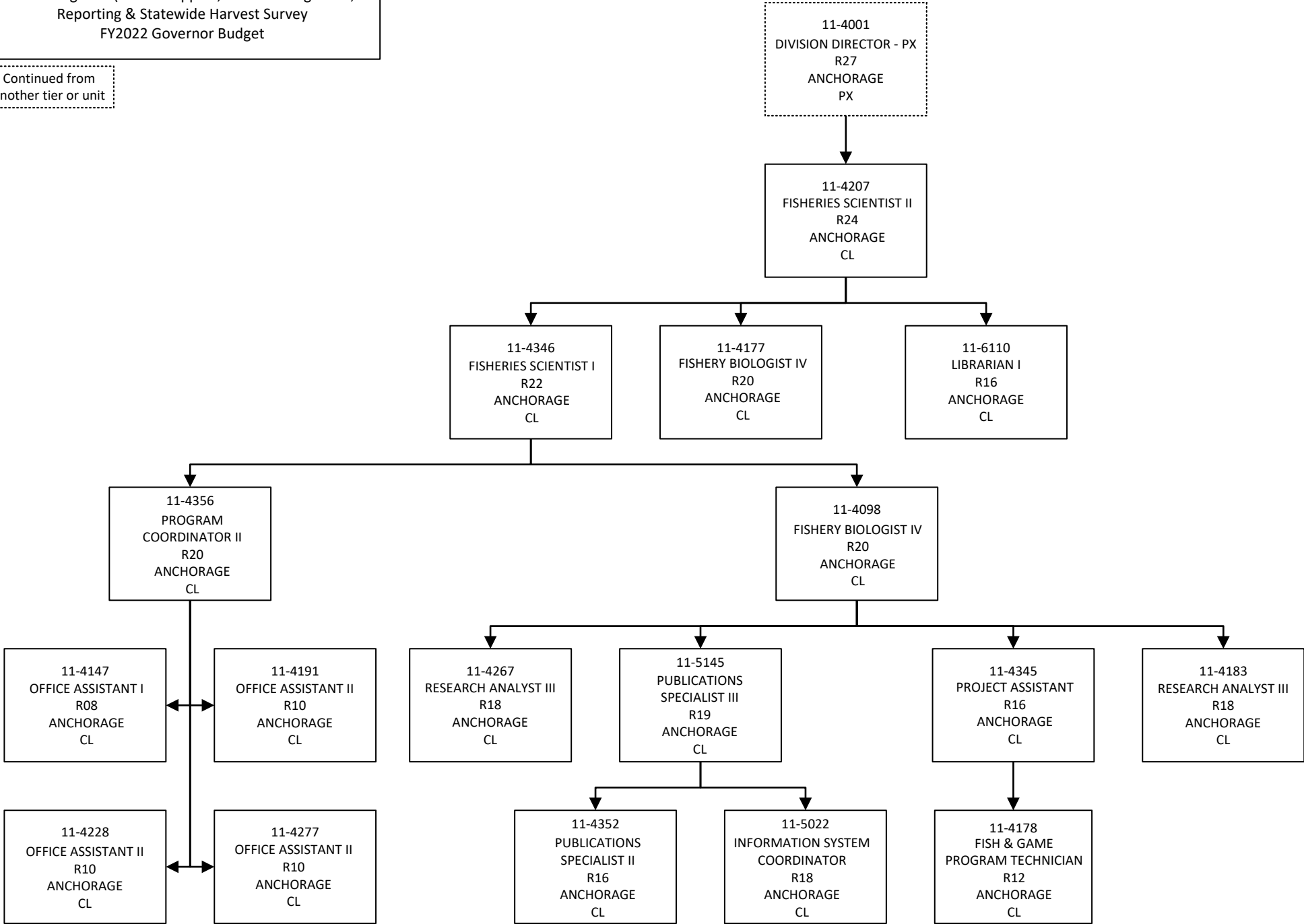
11-4001  
 DIVISION  
 DIRECTOR - PX  
 R27  
 ANCHORAGE  
 PX

11-4026  
 FISH & GAME  
 COORDINATOR  
 R22  
 FAIRBANKS  
 CL



Department of Fish and Game  
 464 - Sport Fisheries  
 Unit – Region 4 (Admin Support, Guides & Logbooks,  
 Reporting & Statewide Harvest Survey  
 FY2022 Governor Budget

Continued from  
 another tier or unit



Department of Fish and Game  
 464 - Sport Fisheries  
 Unit – Region 4 (Biometrics, Habitat & Restoration, Information  
 Management & Education & Statewide Aquatic Resources)  
 FY2022 Governor Budget

Continued from  
 another tier or unit

11-4001  
 DIVISION  
 DIRECTOR - PX  
 R27  
 ANCHORAGE  
 PX

11-4207  
 FISHERIES  
 SCIENTIST II  
 R24  
 ANCHORAGE  
 CL

