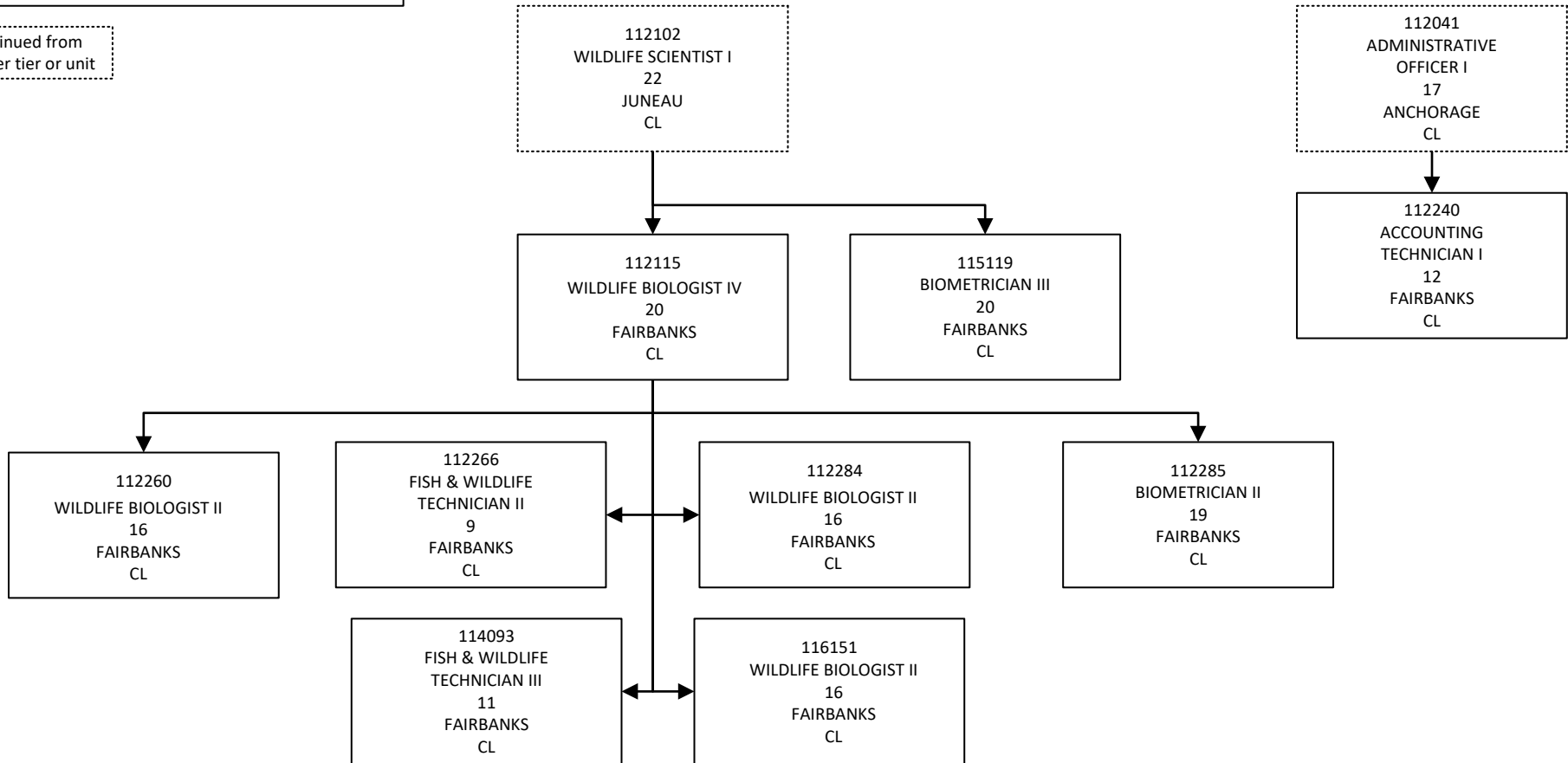


Department of Fish and Game
147 - Wildlife Conservation
Unit – Headquarters Threatened
Endangered Species
FY2022 Governor Budget

Continued from
another tier or unit



Department of Fish and Game
 147 - Wildlife Conservation
 Unit – Statewide Headquarters
 FY2022 Governor Budget

Continued from
 another tier or unit

11-2001
 DIVISION DIRECTOR
 R27
 PALMER
 PX

11-2268
 FISH & GAME COORDINATOR
 R22
 ANCHORAGE
 CL

11-0131
 INFORMATION OFFICER II
 R17
 JUNEAU
 CL

11-2049
 DIVISION OPERATIONS MANAGER
 R24
 JUNEAU
 CL

11-2278
 PROGRAM COORDINATOR II
 R20
 JUNEAU
 CL

11-7073
 WILDLIFE BIOLOGIST III
 R18
 JUNEAU
 CL

11-4339
 DATA PROCESSING MANAGER I
 R22
 JUNEAU
 CL

11-2174
 ASSISTANT DIRECTOR,
 DEPARTMENT OF FISH & GAME
 R22
 JUNEAU
 CL

11-2269
 WILDLIFE SCIENTIST II
 R24
 JUNEAU
 CL

11-2187
 ADMINISTRATIVE
 OPERATIONS MANAGER I
 R22
 JUNEAU
 CL

11-2153
 ANALYST/PROGRAMMER IV
 R20
 JUNEAU
 CL

11-2253
 WILDLIFE BIOLOGIST I
 R14
 JUNEAU
 CL

11-2249
 ANALYST/PROGRAMMER V
 R22
 JUNEAU
 CL

11-2102
 WILDLIFE SCIENTIST I
 R22
 JUNEAU
 CL

11-2270
 BUDGET ANALYST II
 R19
 JUNEAU
 CL

11-2126
 ACCOUNTANT IV
 R20
 JUNEAU
 CL

11-2002
 PROGRAM COORDINATOR II
 R20
 JUNEAU
 CL

11-2134
 ANALYST/PROGRAMMER III
 R18
 JUNEAU
 CL

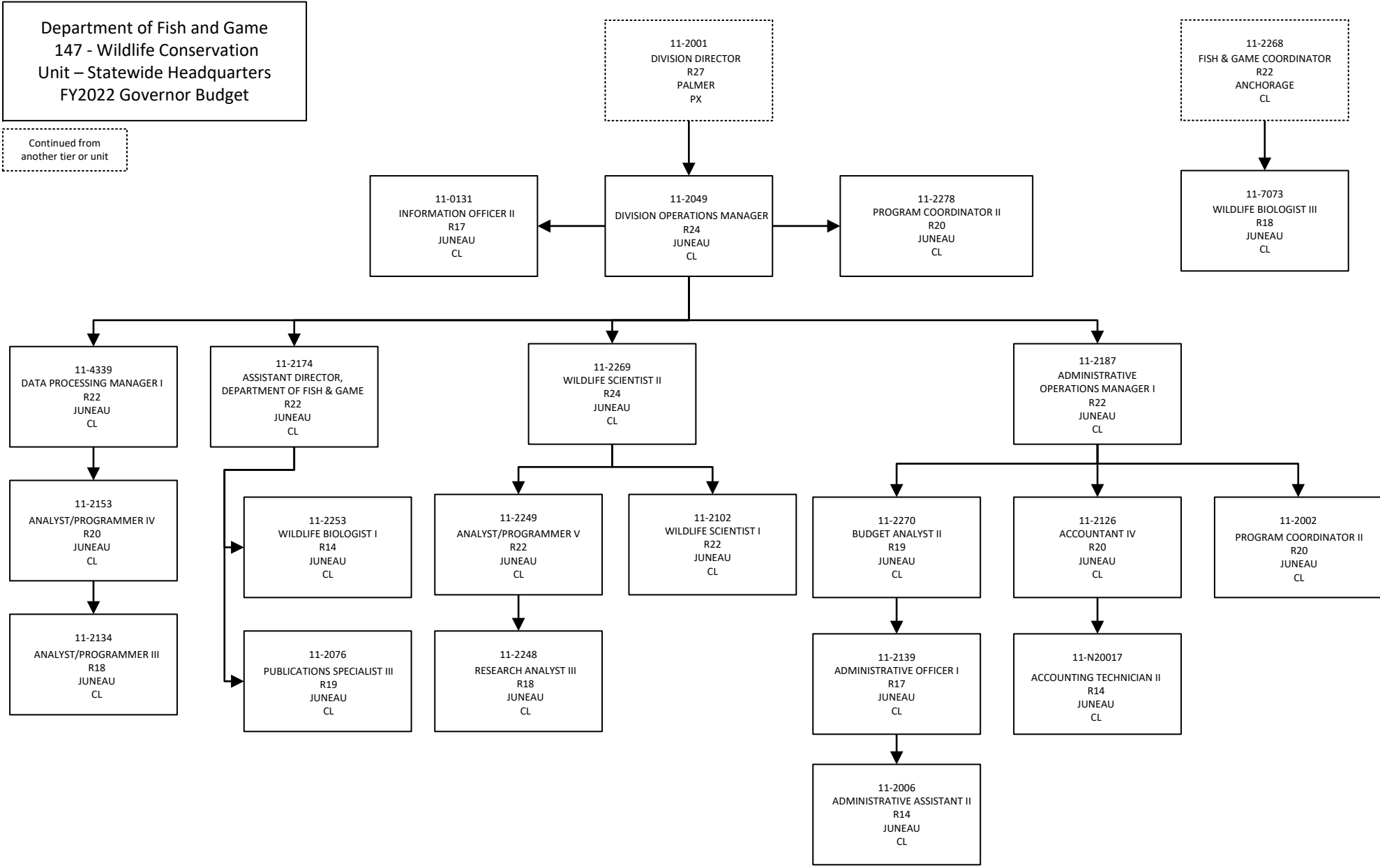
11-2076
 PUBLICATIONS SPECIALIST III
 R19
 JUNEAU
 CL

11-2248
 RESEARCH ANALYST III
 R18
 JUNEAU
 CL

11-2139
 ADMINISTRATIVE OFFICER I
 R17
 JUNEAU
 CL

11-N20017
 ACCOUNTING TECHNICIAN II
 R14
 JUNEAU
 CL

11-2006
 ADMINISTRATIVE ASSISTANT II
 R14
 JUNEAU
 CL



Department of Fish and Game
147 - Wildlife Conservation
Unit – Statewide Hunter Information &
Training
FY2022 Governor Budget

Continued from
another tier or unit

11-2123
ASSISTANT DIRECTOR,
DEPARTMENT OF FISH & GAME
R22
PALMER
CL

11-2201
PROGRAM
COORDINATOR II
R20
ANCHORAGE
CL

11-5201
TRAINING SPECIALIST II
R18
ANCHORAGE
CL

11-4325
FISH & WILDLIFE
TECHNICIAN III
R11
FAIRBANKS
CL

11-2029
EDUCATION ASSOCIATE II
R15
ANCHORAGE
CL

11-2074
EDUCATION ASSOCIATE II
R15
FAIRBANKS
CL

11-2128
PROJECT ASSISTANT
R16
ANCHORAGE
CL

11-2213
FISH & GAME PROGRAM
TECHNICIAN
R12
ANCHORAGE
CL

11-2251
PROJECT ASSISTANT
R16
ANCHORAGE
CL

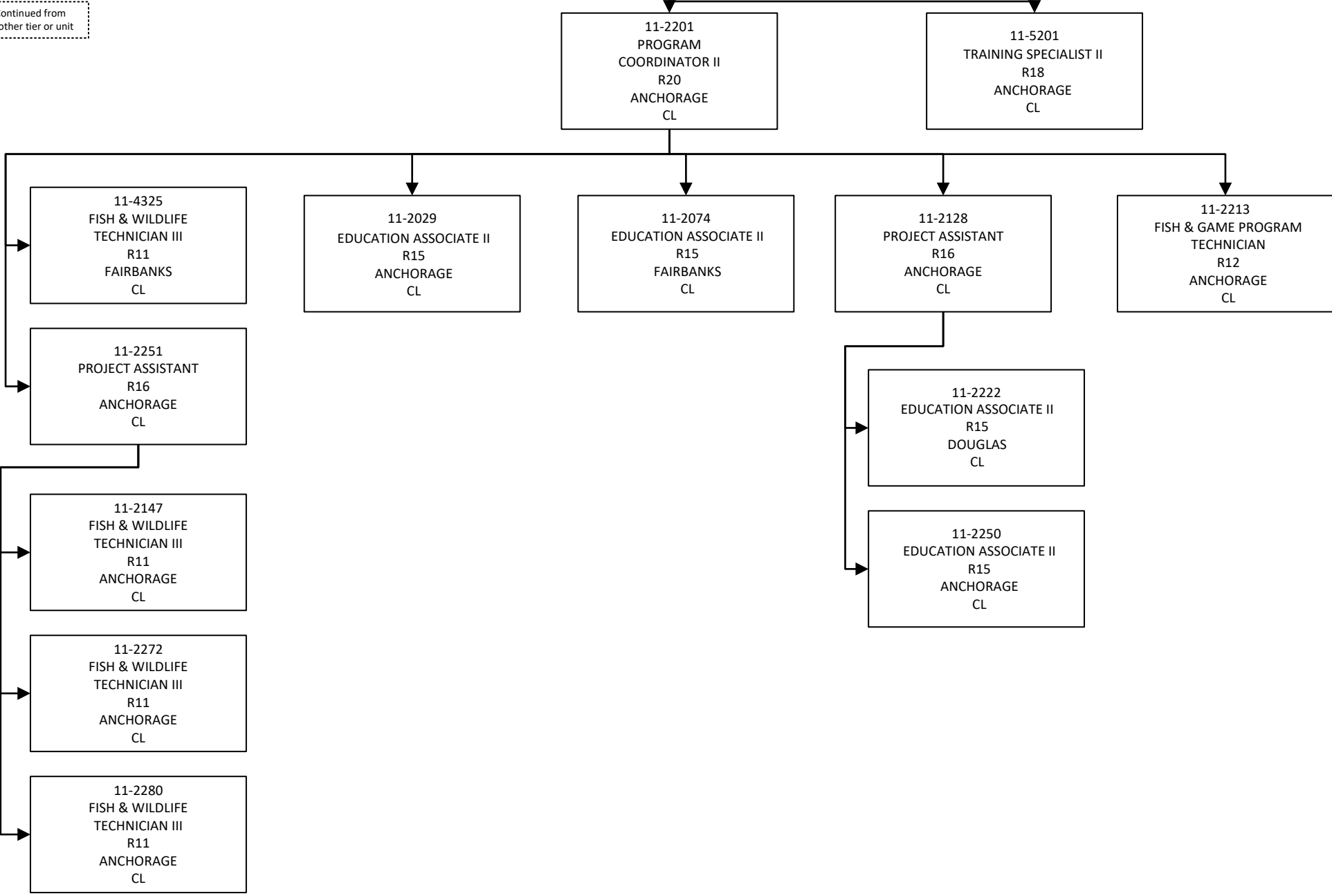
11-2222
EDUCATION ASSOCIATE II
R15
DOUGLAS
CL

11-2147
FISH & WILDLIFE
TECHNICIAN III
R11
ANCHORAGE
CL

11-2250
EDUCATION ASSOCIATE II
R15
ANCHORAGE
CL

11-2272
FISH & WILDLIFE
TECHNICIAN III
R11
ANCHORAGE
CL

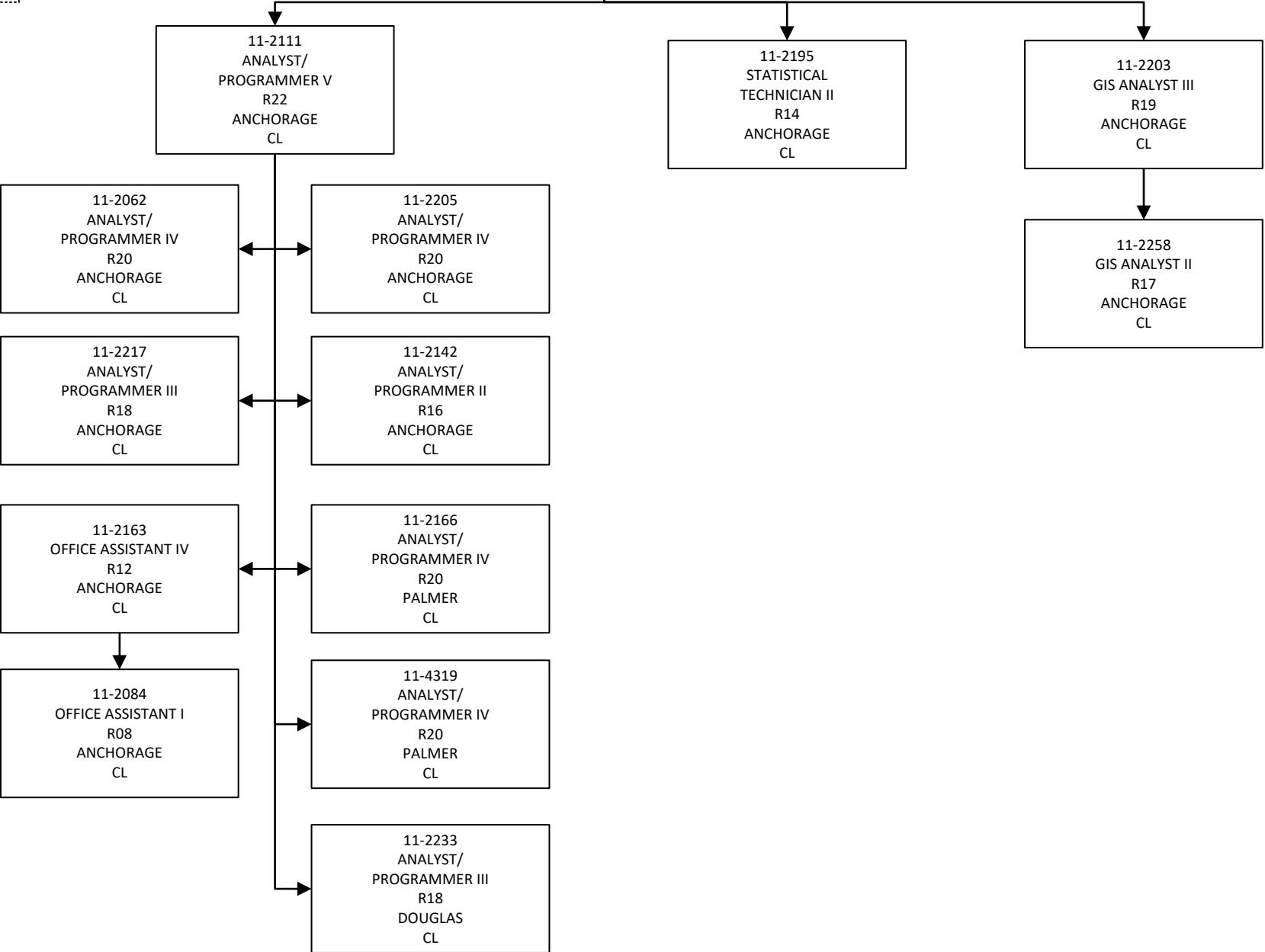
11-2280
FISH & WILDLIFE
TECHNICIAN III
R11
ANCHORAGE
CL



Department of Fish and Game
147 - Wildlife Conservation
Unit – Statewide Information Systems
FY2022 Governor Budget

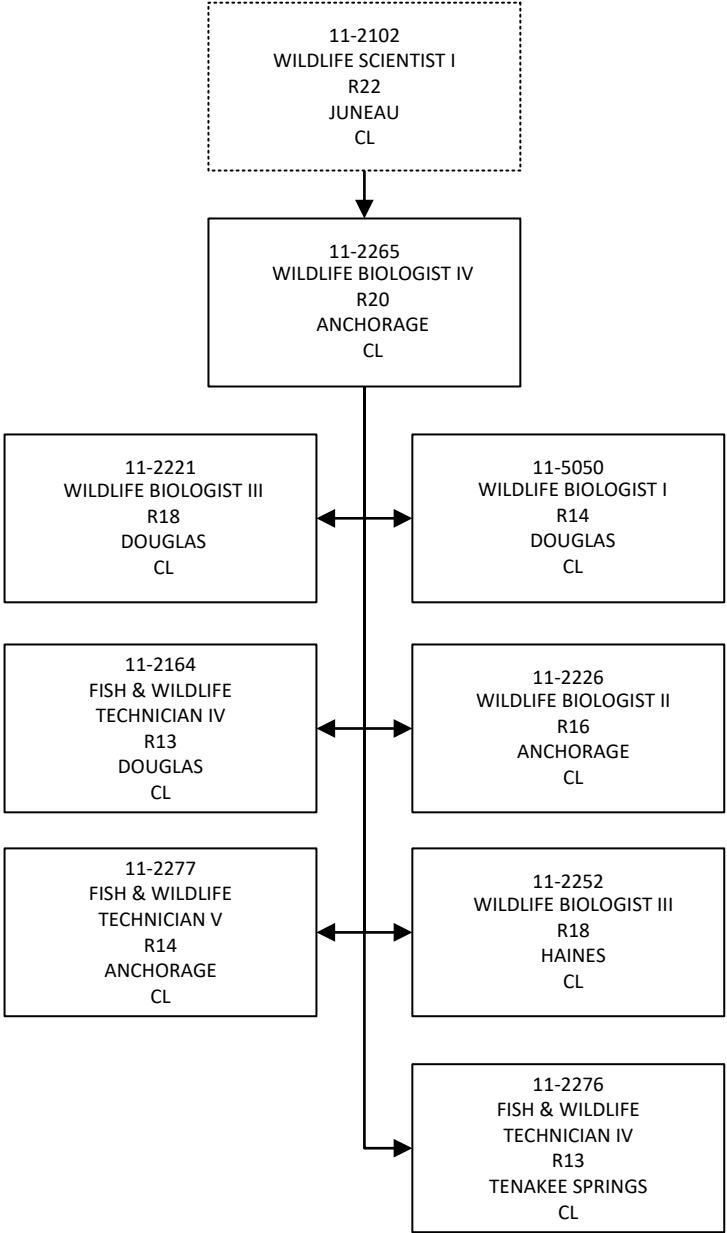
Continued from
another tier or unit

11-4339
DATA PROCESSING
MANAGER I
R22
JUNEAU
CL



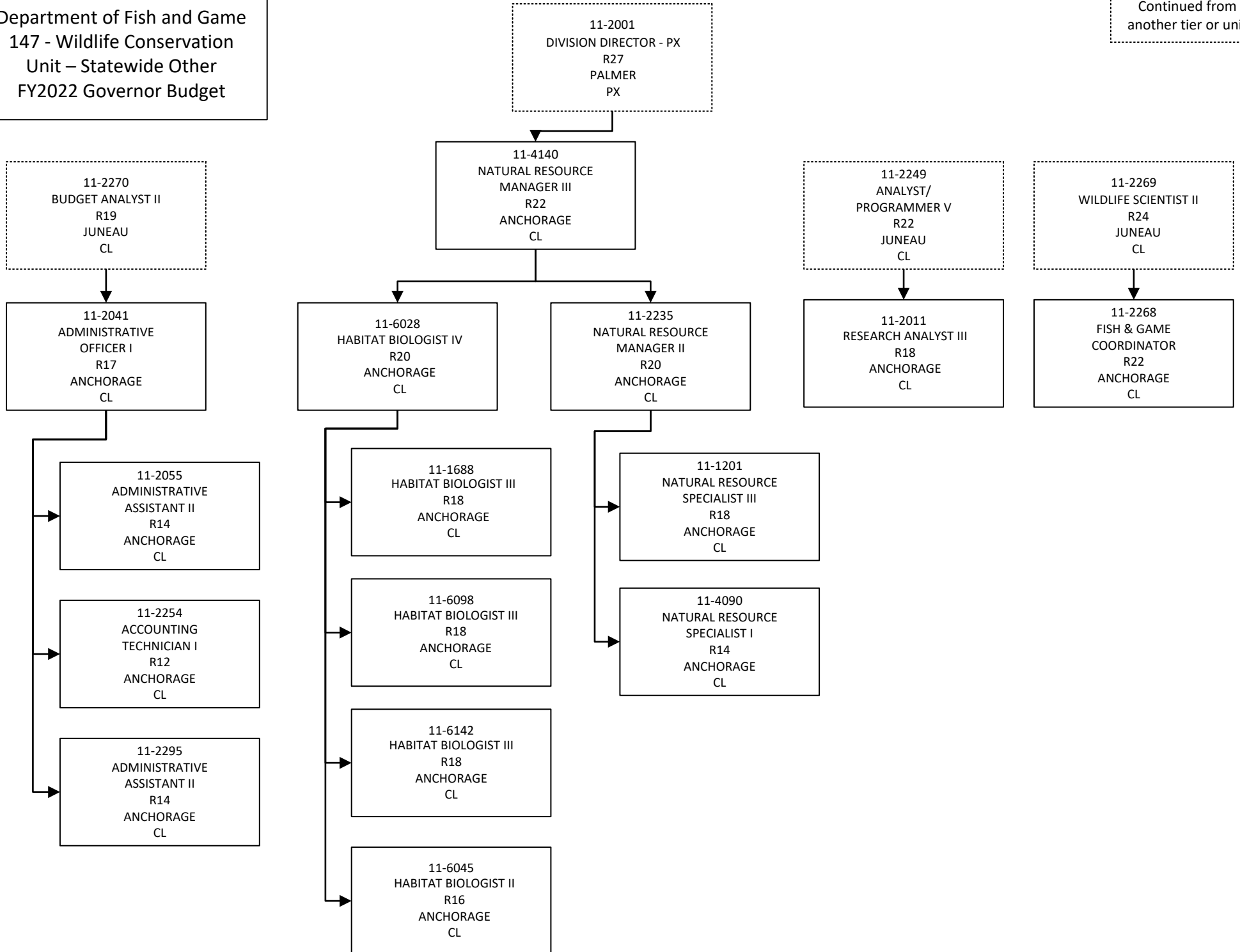
Department of Fish and Game
147 - Wildlife Conservation
Unit – Statewide Marine Mammals
FY2022 Governor Budget

Connected from
another tier or unit



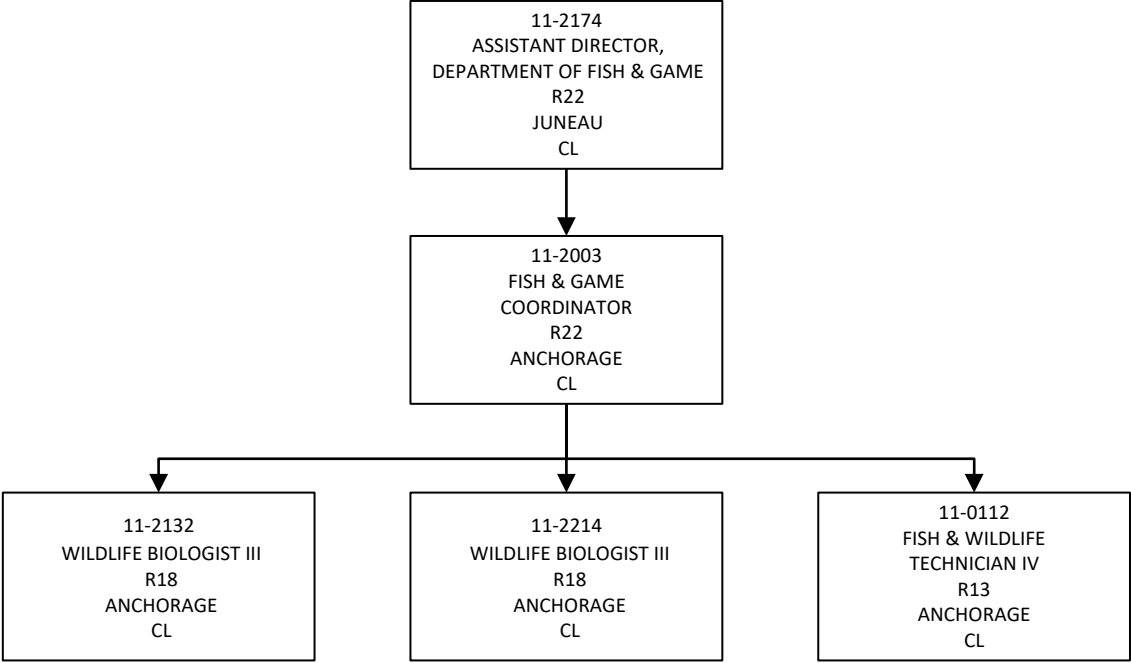
Department of Fish and Game
 147 - Wildlife Conservation
 Unit – Statewide Other
 FY2022 Governor Budget

Continued from
 another tier or unit



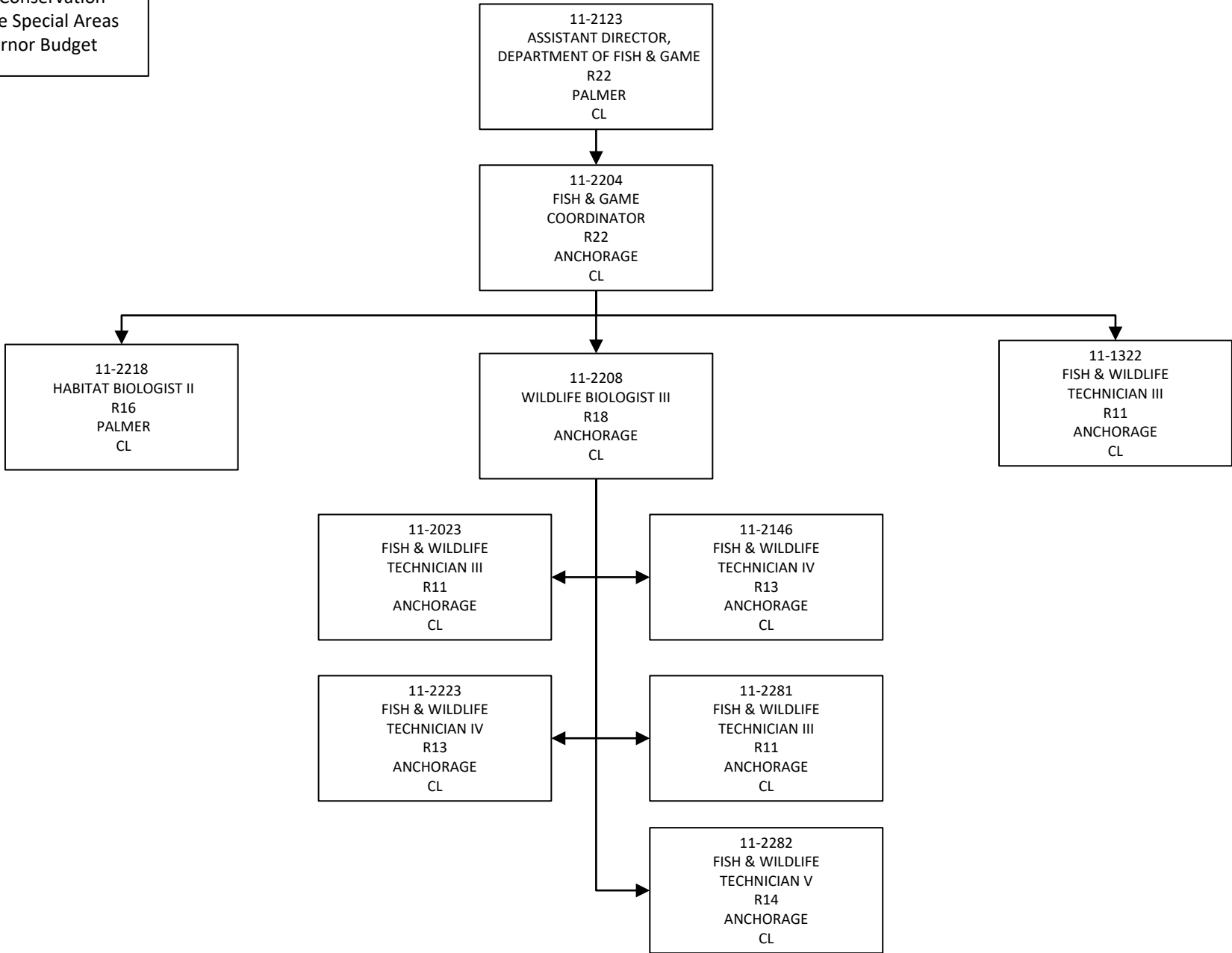
Department of Fish and Game
147 - Wildlife Conservation
Unit – Statewide Water Fowl
FY2022 Governor Budget

Continued from
another tier or unit



Department of Fish and Game
147 - Wildlife Conservation
Unit – Statewide Special Areas
FY2022 Governor Budget

Continued from
another tier or unit



Department of Fish and Game
 147 - Wildlife Conservation
 Unit – Region 1 (Douglas, Ketchikan,
 Petersburg & Sitka)
 FY2022 Governor Budget

Continued from
 another tier or unit

11-2268
 FISH & GAME
 COORDINATOR
 R22
 ANCHORAGE
 CL

11-2269
 WILDLIFE
 SCIENTIST II
 R24
 JUNEAU
 CL

11-2102
 WILDLIFE
 SCIENTIST I
 R22
 JUNEAU
 CL

11-2001
 DIVISION
 DIRECTOR - PX
 R27
 PALMER
 PX

11-2278
 PROGRAM
 COORDINATOR II
 R20
 JUNEAU
 CL

11-2168
 PROGRAM
 COORDINATOR II
 R20
 PALMER
 CL

11-4009
 WILDLIFE
 BIOLOGIST I
 R14
 DOUGLAS
 CL

11-2256
 WILDLIFE
 BIOLOGIST III
 R18
 DOUGLAS
 CL

11-4173
 BIOMETRICIAN III
 R20
 DOUGLAS
 CL

11-2220
 WILDLIFE
 PHYSIOLOGIST III
 R21
 DOUGLAS
 CL

11-2273
 EDUCATION
 ASSOCIATE III
 R17
 DOUGLAS
 CL

11-2140
 WILDLIFE
 BIOLOGIST II
 R16
 DOUGLAS
 CL

11-2007
 FISH & GAME
 COORDINATOR
 R22
 DOUGLAS
 CL

11-2228
 WILDLIFE
 BIOLOGIST III
 R18
 DOUGLAS
 CL

11-2093
 ADMINISTRATIVE
 OFFICER I
 R17
 DOUGLAS
 CL

11-2186
 WILDLIFE
 BIOLOGIST IV
 R20
 DOUGLAS
 CL

11-2227
 WILDLIFE
 BIOLOGIST II
 R16
 DOUGLAS
 CL

11-2100
 WILDLIFE
 BIOLOGIST III
 R18
 DOUGLAS
 CL

11-2099
 WILDLIFE
 BIOLOGIST III
 R18
 KETCHIKAN
 CL

11-2288
 WILDLIFE
 BIOLOGIST III
 R18
 SITKA
 CL

11-2131
 PROJECT
 ASSISTANT
 R16
 DOUGLAS
 CL

11-2161
 ACCOUNTING
 TECHNICIAN I
 R12
 DOUGLAS
 CL

11-5019
 BIOMETRICIAN II
 R19
 DOUGLAS
 CL

11-2100
 WILDLIFE
 BIOLOGIST III
 R18
 DOUGLAS
 CL

11-2257
 FISH & WILDLIFE
 TECHNICIAN III
 R11
 DOUGLAS
 CL

11-2166
 WILDLIFE
 BIOLOGIST III
 R18
 DOUGLAS
 CL

11-2286
 WILDLIFE
 BIOLOGIST II
 R16
 KETCHIKAN
 CL

11-2117
 FISH & GAME PROGRAM
 TECHNICIAN
 R12
 SITKA
 CL

11-2275
 FISH & WILDLIFE
 TECHNICIAN IV
 R13
 DOUGLAS
 CL

11-2127
 WILDLIFE
 BIOLOGIST III
 R18
 DOUGLAS
 CL

11-2162
 WILDLIFE
 BIOLOGIST III
 R18
 DOUGLAS
 CL

11-2156
 FISH & WILDLIFE
 TECHNICIAN V
 R14
 DOUGLAS
 CL

11-2211
 WILDLIFE
 BIOLOGIST II
 R16
 DOUGLAS
 CL

11-6096
 FISH & GAME PROGRAM
 TECHNICIAN
 R12
 KETCHIKAN
 CL

11-2098
 WILDLIFE
 BIOLOGIST III
 R18
 PETERSBURG
 CL

11-4004
 RESEARCH
 ANALYST III
 R18
 DOUGLAS
 CL

11-2145
 WILDLIFE
 BIOLOGIST I
 R14
 DOUGLAS
 CL

11-2262
 FISH & WILDLIFE
 TECHNICIAN III
 R11
 DOUGLAS
 CL

11-2190
 FISH & GAME PROGRAM
 TECHNICIAN
 R12
 DOUGLAS
 CL

11-5195
 FISH & GAME PROGRAM
 TECHNICIAN
 R12
 PETERSBURG
 CL

11-2224
 WILDLIFE
 BIOLOGIST I
 R14
 DOUGLAS
 CL

Department of Fish and Game
 147 - Wildlife Conservation
 Unit – Region 2 Anchorage
 FY2022 Governor Budget

Continued from
 another tier or unit

11-2268
 FISH & GAME
 COORDINATOR
 R22
 ANCHORAGE
 CL

11-1387
 WILDLIFE BIOLOGIST IV
 R20
 ANCHORAGE
 CL

11-2179
 WILDLIFE BIOLOGIST III
 R18
 ANCHORAGE
 CL

11-1659
 WILDLIFE BIOLOGIST I
 R14
 ANCHORAGE
 CL

11-2001
 DIVISION DIRECTOR
 R27
 PALMER
 PX

11-2091
 FISH & GAME
 COORDINATOR
 R22
 ANCHORAGE
 CL

11-2018
 ADMINISTRATIVE
 OFFICER I
 R17
 ANCHORAGE
 CL

11-2053
 ADMINISTRATIVE
 ASSISTANT II
 R14
 ANCHORAGE
 CL

11-2106
 ACCOUNTING
 TECHNICIAN I
 R12
 ANCHORAGE
 CL

11-2274
 WILDLIFE BIOLOGIST
 IV
 R20
 ANCHORAGE
 CL

11-2119
 BIOMETRICIAN III
 R20
 ANCHORAGE
 CL

11-2042
 WILDLIFE
 BIOLOGIST III
 R18
 ANCHORAGE
 CL

11-2034
 WILDLIFE
 PHYSIOLOGIST II
 R19
 ANCHORAGE
 CL

11-2150
 FISH & WILDLIFE
 TECHNICIAN IV
 R13
 ANCHORAGE
 CL

11-2184
 WILDLIFE BIOLOGIST III
 R18
 ANCHORAGE
 CL

11-2075
 FISH & WILDLIFE
 TECHNICIAN V
 R14
 ANCHORAGE
 CL

11-2182
 WILDLIFE BIOLOGIST IV
 R20
 SOLDOTNA
 CL

11-2056
 WILDLIFE BIOLOGIST II
 R16
 ANCHORAGE
 CL

11-2177
 FISH & WILDLIFE
 TECHNICIAN IV
 R13
 ANCHORAGE
 CL

11-2196
 FISH & WILDLIFE
 TECHNICIAN III
 R11
 ANCHORAGE
 CL

11-2237
 FISH & WILDLIFE
 TECHNICIAN III
 R11
 ANCHORAGE
 CL

11-2122
 WILDLIFE BIOLOGIST III
 R18
 ANCHORAGE
 CL

11-2020
 WILDLIFE BIOLOGIST II
 R16
 ANCHORAGE
 CL

11-2294
 WILDLIFE BIOLOGIST II
 R16
 ANCHORAGE
 CL

11-2049
 DIVISION OPERATIONS
 MANAGER
 R24
 JUNEAU
 CL

11-2078
 INFORMATION
 OFFICER II
 R17
 ANCHORAGE
 CL

11-2269
 WILDLIFE SCIENTIST II
 R24
 JUNEAU
 CL

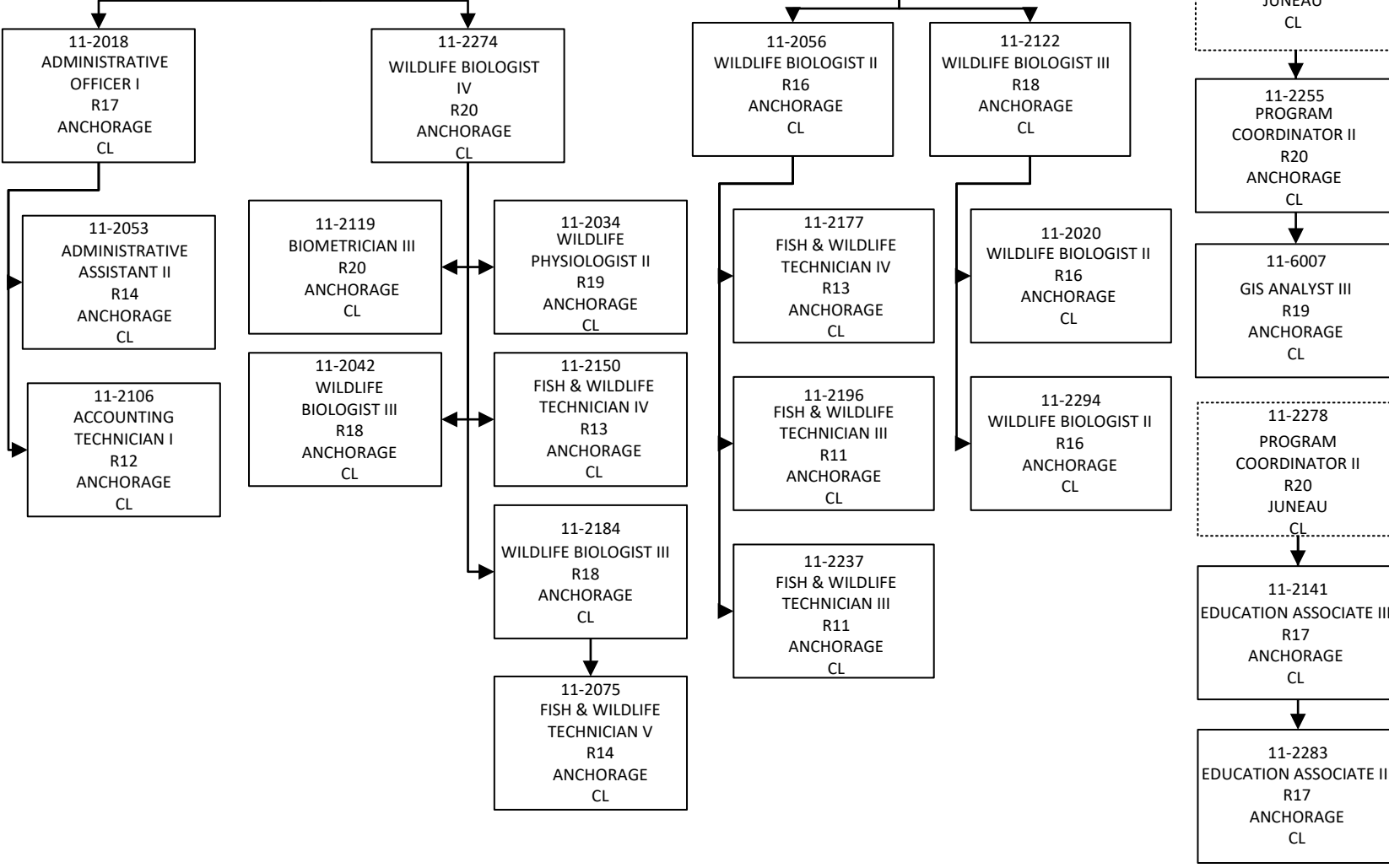
11-2255
 PROGRAM
 COORDINATOR II
 R20
 ANCHORAGE
 CL

11-6007
 GIS ANALYST III
 R19
 ANCHORAGE
 CL

11-2278
 PROGRAM
 COORDINATOR II
 R20
 JUNEAU
 CL

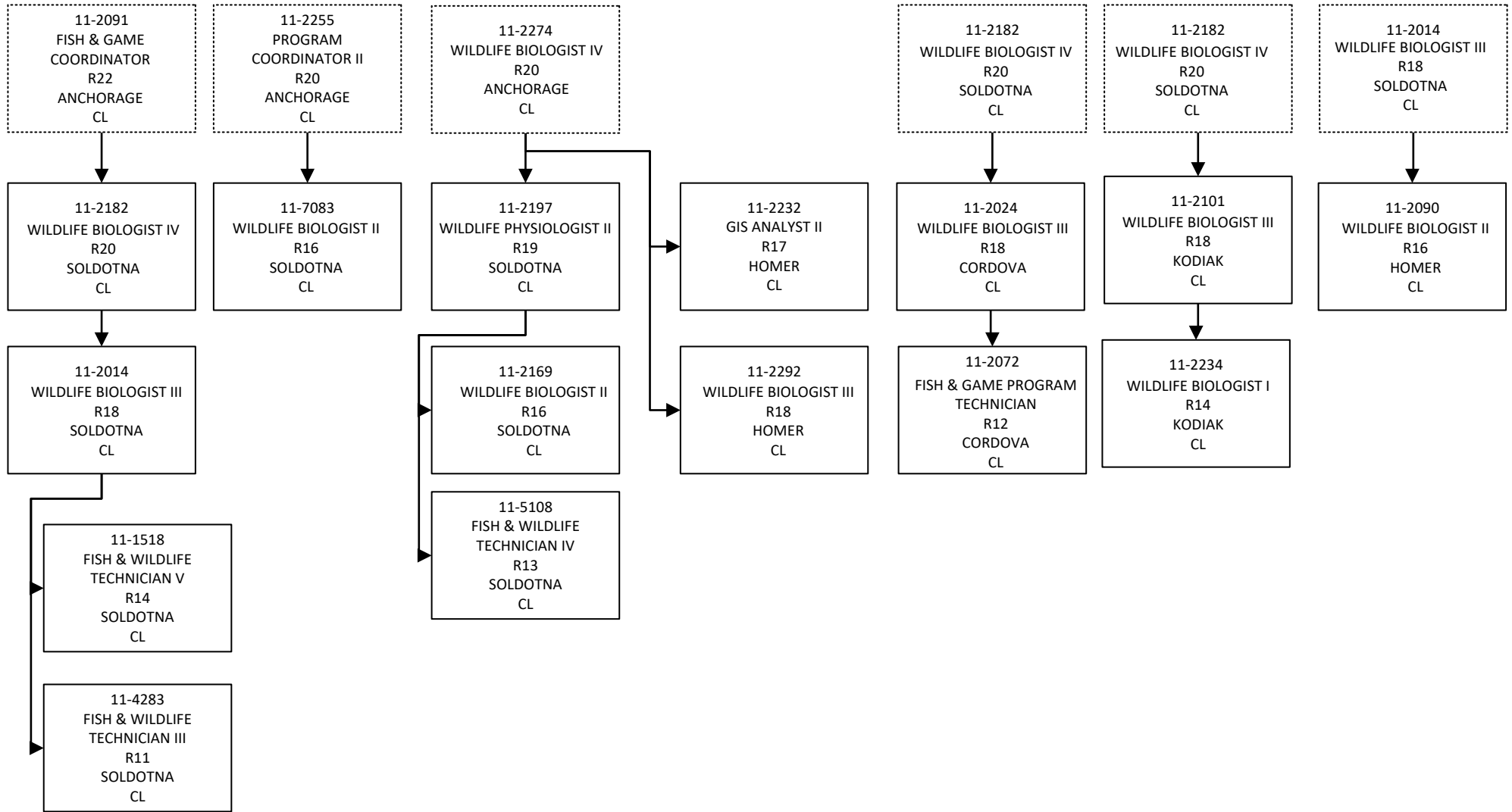
11-2141
 EDUCATION ASSOCIATE III
 R17
 ANCHORAGE
 CL

11-2283
 EDUCATION ASSOCIATE III
 R17
 ANCHORAGE
 CL



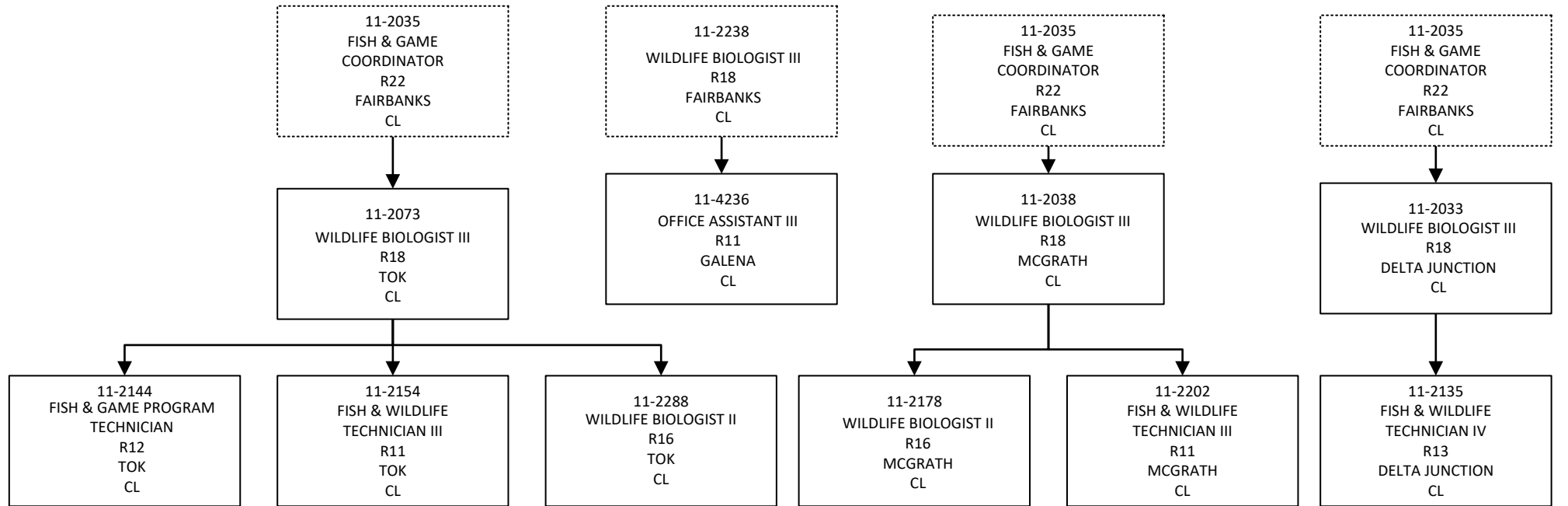
Department of Fish and Game
 147 - Wildlife Conservation
 Unit – Region 2 (Except Anchorage) Soldotna,
 Homer, Cordova & Kodiak
 FY2022 Governor Budget

Continued from
 another tier or unit



Department of Fish and Game
147 - Wildlife Conservation
Unit – Region 3 Except Fairbanks (Tok, Galena,
McGrath & Delta Junction)
FY2022 Governor Budget

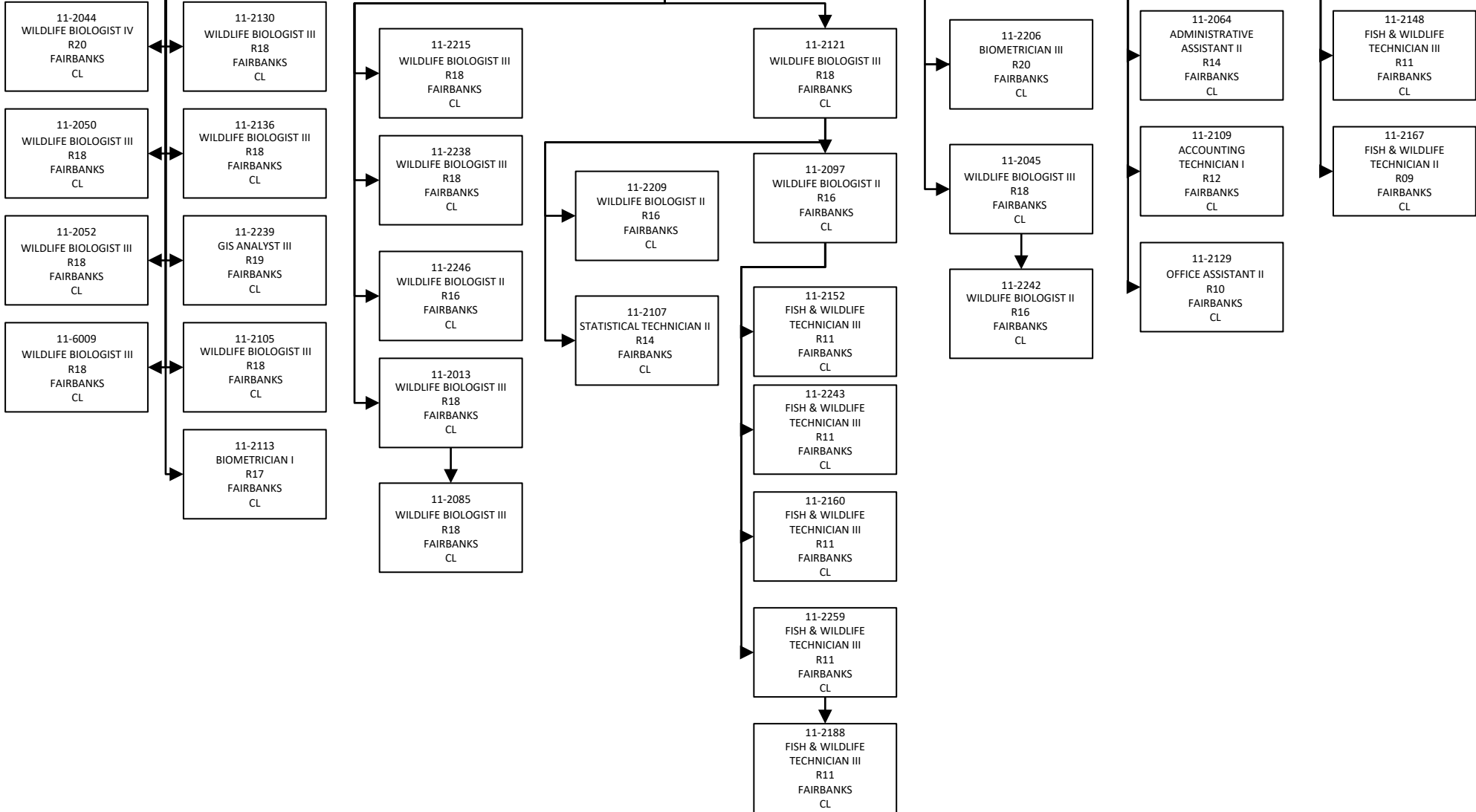
Connected from
another tier or unit



Department of Fish and Game
 147 - Wildlife Conservation
 Unit Region 3 Fairbanks
 FY2022 Governor Budget

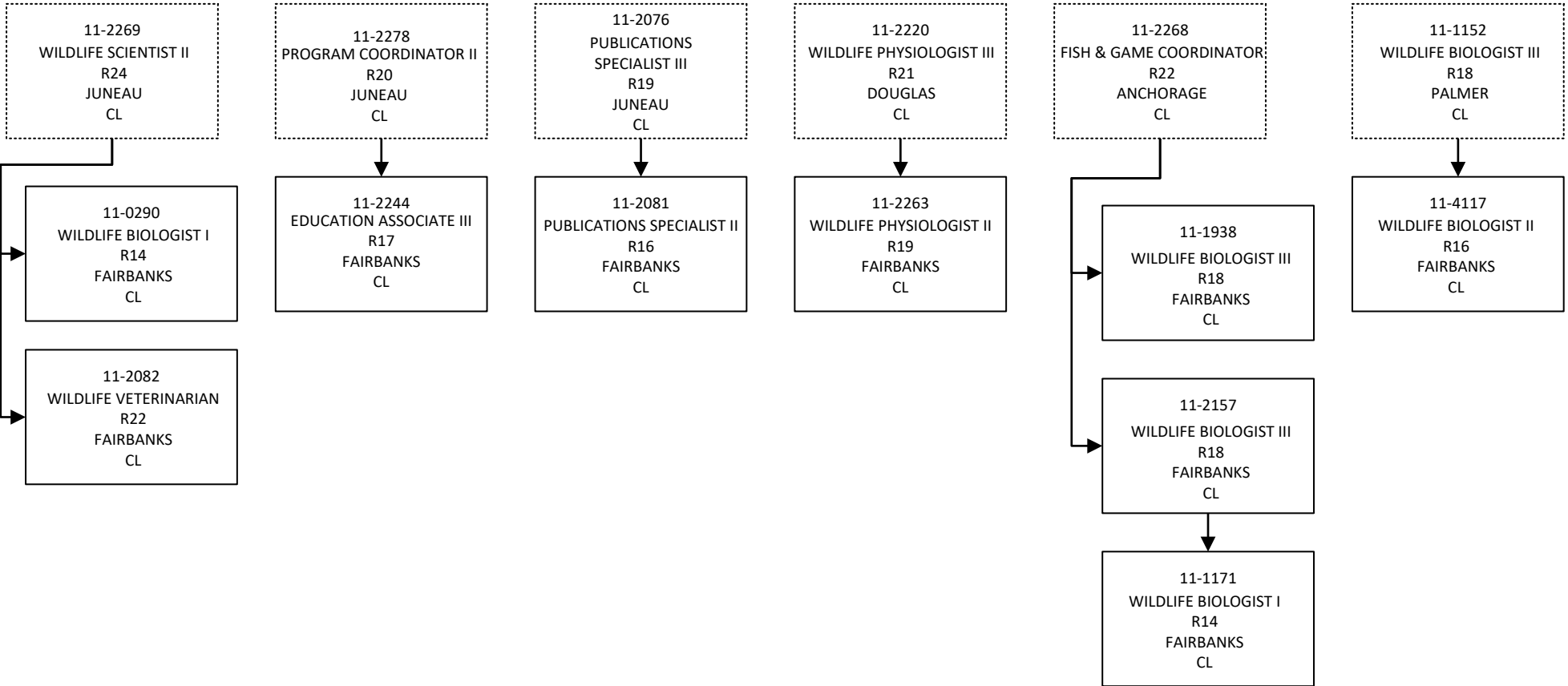
Continued from
 another tier or unit

11-2032
 FISH & GAME
 COORDINATOR
 R22
 FAIRBANKS
 CL



Department of Fish and Game
147 - Wildlife Conservation
Unit Region 3 Fairbanks continued
FY2022 Governor Budget

Continued from
another tier or unit



Department of Fish and Game
 147 - Wildlife Conservation
 Unit – Region 4 Palmer
 FY2022 Governor Budget

Connected from
 another tier or unit

11-2001
 DIVISION DIRECTOR - PX
 R27
 PALMER
 PX

11-2278
 PROGRAM COORDINATOR II
 R20
 JUNEAU
 CL

11-2174
 ASSISTANT DIRECTOR,
 DEPARTMENT OF FISH & GAME
 R22
 JUNEAU
 CL

11-2289
 FISH & GAME COORDINATOR
 R22
 PALMER
 CL

11-4281
 EDUCATION ASSOCIATE III
 R17
 PALMER
 CL

11-1152
 WILDLIFE BIOLOGIST III
 R18
 PALMER
 CL

11-2216
 WILDLIFE BIOLOGIST IV
 R20
 PALMER
 CL

11-2229
 WILDLIFE BIOLOGIST IV
 R20
 PALMER
 CL

11-2290
 FISH & GAME COORDINATOR
 R22
 PALMER
 CL

11-2291
 ADMINISTRATIVE OFFICER I
 R17
 PALMER
 CL

11-2125
 WILDLIFE BIOLOGIST I
 R14
 PALMER
 CL

11-2293
 BIOMETRICIAN II
 R19
 PALMER
 CL

11-1391
 WILDLIFE BIOLOGIST III
 R18
 PALMER
 CL

11-2026
 WILDLIFE BIOLOGIST III
 R18
 PALMER
 CL

11-2089
 PROJECT ASSISTANT
 R16
 PALMER
 CL

11-2083
 ADMINISTRATIVE ASSISTANT II
 R14
 PALMER
 CL

11-1600
 WILDLIFE VETERINARIAN
 R22
 PALMER
 CL

11-4227
 WILDLIFE BIOLOGIST IV
 R20
 ANCHORAGE
 CL

11-2036
 WILDLIFE PHYSIOLOGIST II
 R19
 PALMER
 CL

11-2060
 WILDLIFE BIOLOGIST II
 R16
 PALMER
 CL

11-2063
 FISH & WILDLIFE
 TECHNICIAN III
 R11
 PALMER
 CL

11-2168
 PROGRAM COORDINATOR II
 R20
 PALMER
 CL

11-2059
 WILDLIFE BIOLOGIST III
 R18
 PALMER
 CL

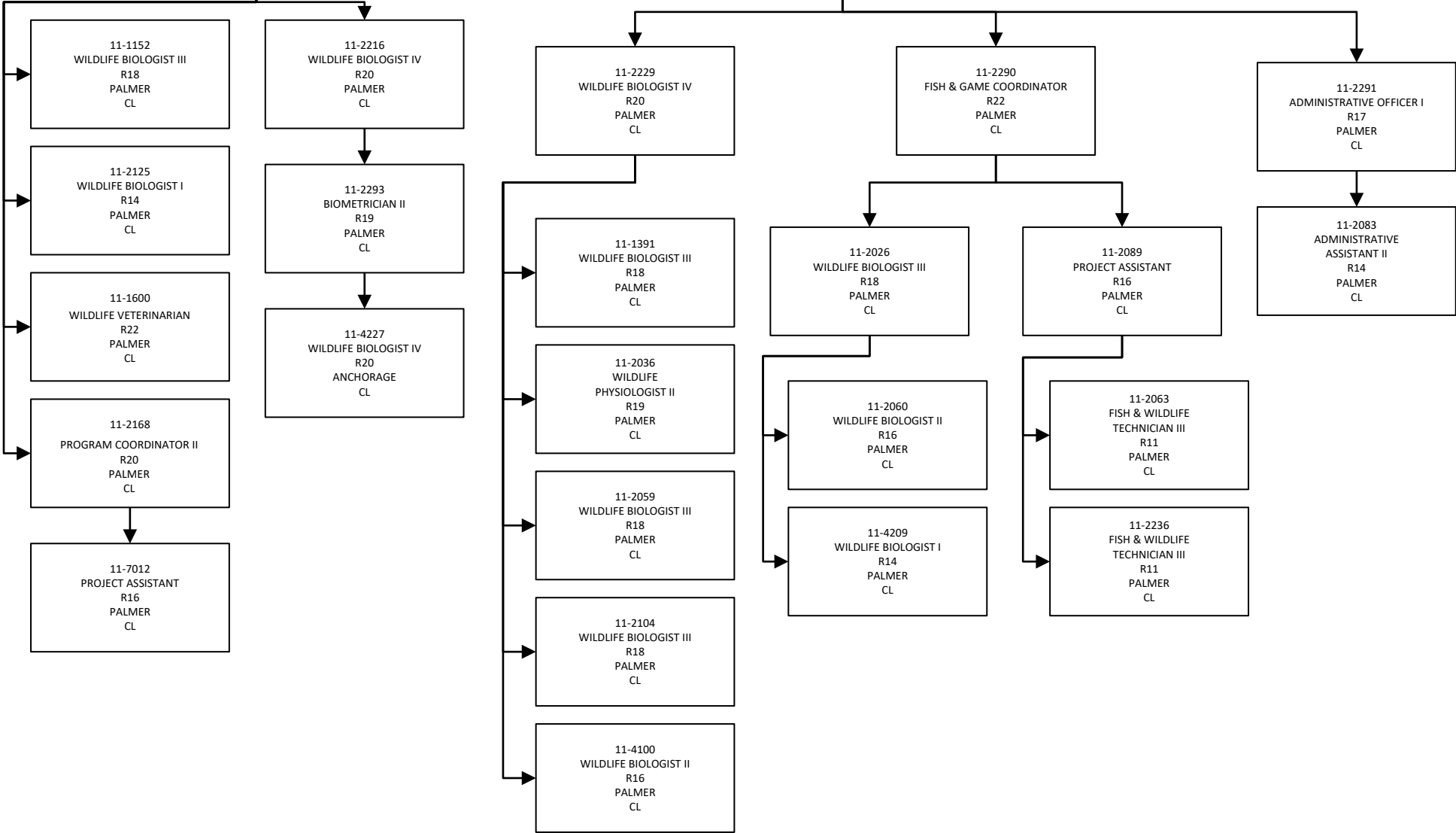
11-4209
 WILDLIFE BIOLOGIST I
 R14
 PALMER
 CL

11-2236
 FISH & WILDLIFE
 TECHNICIAN III
 R11
 PALMER
 CL

11-7012
 PROJECT ASSISTANT
 R16
 PALMER
 CL

11-2104
 WILDLIFE BIOLOGIST III
 R18
 PALMER
 CL

11-4100
 WILDLIFE BIOLOGIST II
 R16
 PALMER
 CL



Department of Fish and Game
147 - Wildlife Conservation
Unit – Region 4 Except Palmer (Dillingham,
Glennallen & King Salmon)
FY2022 Governor Budget

Continued from
another tier or unit

11-2290
FISH & GAME COORDINATOR
R22
PALMER
CL

11-2069
WILDLIFE BIOLOGIST III
R18
DILLINGHAM
CL

11-0452
FISH & GAME PROGRAM
TECHNICIAN
R12
DILLINGHAM
CL

11-2289
FISH & GAME COORDINATOR
R22
PALMER
CL

11-2039
WILDLIFE BIOLOGIST III
R18
GLENNALLEN
CL

11-2092
WILDLIFE BIOLOGIST II
R16
GLENNALLEN
CL

11-2116
FISH & GAME
PROGRAM TECHNICIAN
R12
GLENNALLEN
CL

11-6118
FISH & WILDLIFE
TECHNICIAN IV
R13
GLENNALLEN
CL

11-2290
FISH & GAME COORDINATOR
R22
PALMER
CL

11-2067
WILDLIFE BIOLOGIST III
R18
KING SALMON
CL

11-2086
WILDLIFE BIOLOGIST II
R16
KING SALMON
CL

11-2118
FISH & GAME
PROGRAM TECHNICIAN
R12
KING SALMON
CL

Department of Fish and Game
 147 - Wildlife Conservation
 Unit – Region 5 Barrow, Bethel, Kotzebue & Nome
 FY2022 Governor Budget

Connected from
 another tier or unit

