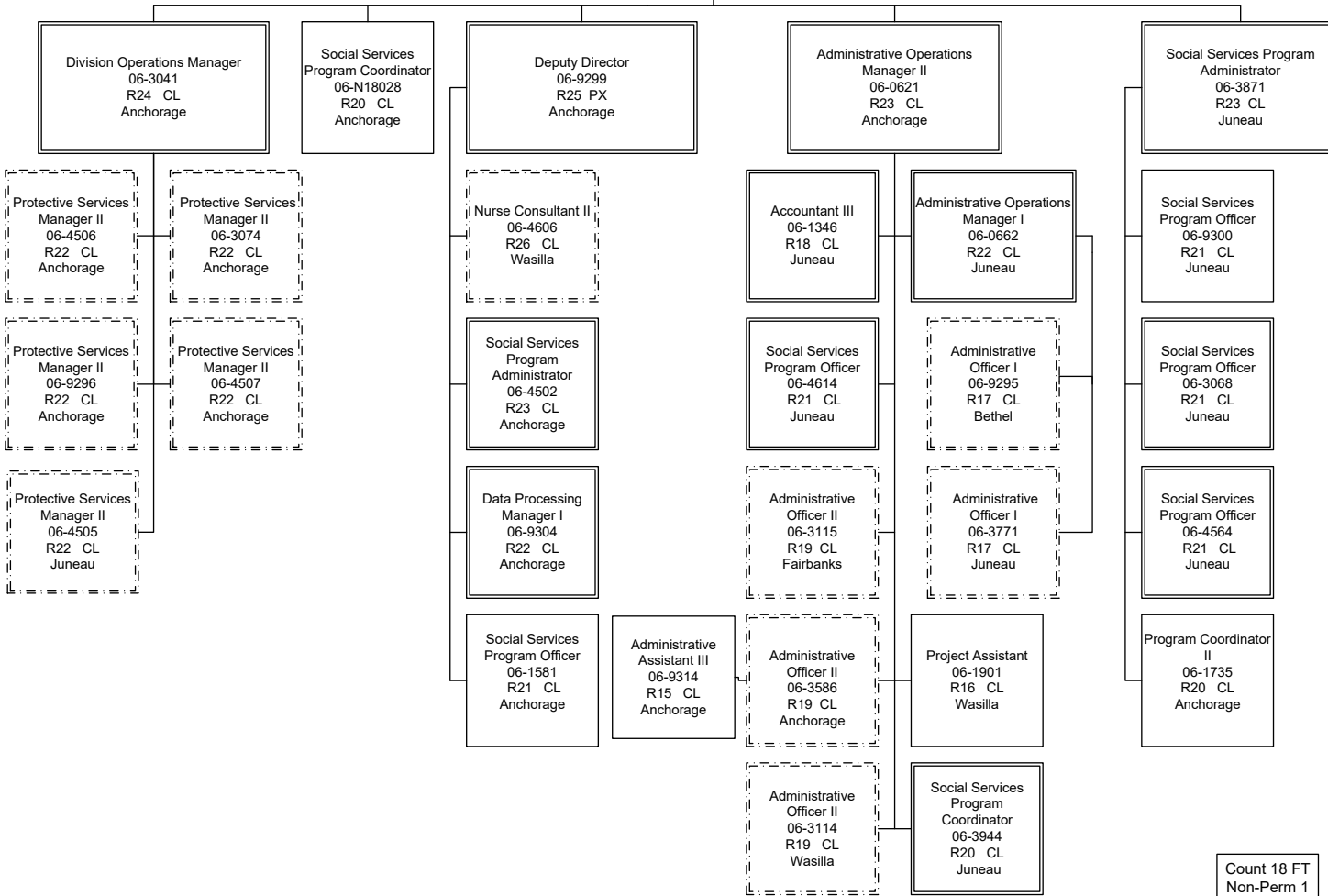


Health and Social Services  
Office of Children's Services  
Children's Services Management (2666)  
FY2022 Governor

Division Director  
06-9269  
R27 PX  
Juneau



Count 18 FT  
Non-Perm 1

Health and Social Services  
Office of Children's Services  
Children's Services Management (2666)  
FY2022 Governor

Deputy Director  
06-9299  
R25 PX  
Anchorage

Social Services  
Program Administrator  
06-3871  
R23 CL  
Juneau

Social Services  
Program Administrator  
06-4502  
R23 CL  
Anchorage

Data Processing  
Manager I  
06-9304  
R22 CL  
Anchorage

Nurse  
Consultant II  
06-4606  
R26 CL  
Wasilla

Social Services  
Program Officer  
06-4564  
R21 CL  
Juneau

Social Services  
Program Officer  
06-3068  
R21 CL  
Juneau

Social Services  
Program Officer  
06-3089  
R21 CL  
Anchorage

Protective Services  
Manager I  
06-3792  
R21 CL  
Anchorage

Social Services  
Program  
Coordinator  
06-9171  
R20 CL  
Anchorage

Research  
Analyst IV  
06-3962  
R21 CL  
Juneau

Nurse Consultant I  
06-4601  
R24 CL  
Fairbanks

Social Services  
Program  
Coordinator  
06-4588  
R20 CL  
Juneau

Social Services  
Program  
Coordinator  
06-4637  
R20 CL  
Juneau

Social Services  
Program  
Coordinator  
06-3457  
R20 CL  
Juneau

Program  
Coordinator II  
06-9169  
R20 CL  
Anchorage

Safety Officer  
06-3711  
R18 CL  
Anchorage

Social Services  
Program  
Coordinator  
06-9168  
R20 CL  
Anchorage

Research  
Analyst III  
06-3705  
R18 CL  
Juneau

Nurse Consultant I  
06-4603  
R24 CL  
Anchorage

Program  
Coordinator I  
06-3972  
R18 CL  
Juneau

Protective Services  
Specialist IV  
06-1350  
R20 CL  
Juneau

Social Services  
Associate  
06-3011  
R12 CL  
Juneau

Social Services  
Program  
Coordinator  
06-3949  
R20 CL  
Juneau

Protective Services  
Specialist IV  
06-9167  
R20 CL  
Anchorage

Protective Services  
Specialist II  
06-3926  
R17 CL  
Anchorage

Research  
Analyst II  
06-4570  
R16 CL  
Juneau

Nurse Consultant I  
06-4604  
R24 CL  
Wasilla

Program  
Coordinator I  
06-9294  
R18 CL  
Juneau

Social Services  
Program  
Coordinator  
06-1794  
R20 CL  
Juneau

Protective  
Services Specialist  
III  
06-4636  
R19 CL  
Juneau

Social Services  
Program Officer  
06-9400  
R21 CL  
Anchorage

Protective Services  
Specialist II  
06-3934  
R17 CL  
Anchorage

Mental Health  
Clinician III  
06-4642  
R21 CL  
Anchorage

Program  
Coordinator I  
06-4625  
R18 CL  
Juneau

Project Assistant  
06-3112  
R16 CL  
Juneau

Social Services  
Program  
Coordinator  
06-3709  
R20 CL  
Juneau

Social Services  
Associate  
06-3946  
R12 CL  
Juneau

Count 21 FT

Health and Social Services  
Office of Children's Services  
Children's Services Management (2666)  
FY2022 Governor

Division Director  
06-9269  
R27 PX  
Juneau

Administrative Operations  
Manager II  
06-0621  
R23 CL  
Anchorage

Administrative  
Operations Manager I  
06-0662  
R22 CL  
Juneau

Social Services  
Program  
Coordinator  
06-3944  
R20 CL  
Juneau

Accountant III  
06-1346  
R18 CL  
Juneau

Social Services  
Program Officer  
06-4614  
R21 CL  
Juneau

Project Assistant  
06-1901  
R16 CL  
Wasilla

Administrative  
Officer II  
06-3586  
R19 CL  
Anchorage

Administrative  
Assistant III  
06-0642  
R15 CL  
Juneau

Office Assistant II  
06-3028  
R10 CL  
Juneau

Project Assistant  
06-0661  
R16 CL  
Juneau

Accounting  
Technician III  
06-4609  
R16 CL  
Juneau

Accounting  
Technician I  
06-3671  
R12 CL  
Juneau

Accounting  
Technician II  
06-4516  
R14 CL  
Juneau

Accountant II  
06-3707  
R16 CL  
Juneau

Project Assistant  
06-4616  
R16 CL  
Juneau

Project Assistant  
06-3948  
R16 CL  
Juneau

Administrative  
Officer II  
06-3115  
R19 CL  
Fairbanks

Administrative  
Officer I  
06-3771  
R17 CL  
Juneau

Administrative  
Officer I  
06-9295  
R17 CL  
Bethel

Eligibility  
Technician II  
06-0660  
R14 CL  
Juneau

Accounting  
Technician I  
06-0641  
R12 CL  
Juneau

Eligibility  
Technician II  
06-9340  
R14 CL  
Juneau

Accounting  
Technician II  
06-4610  
R14 CL  
Juneau

Administrative  
Officer II  
06-3114  
R19 CL  
Wasilla

Eligibility  
Technician II  
06-0659  
R14 CL  
Juneau

Accounting Clerk  
06-3702  
R10 CL  
Juneau

Social Services  
Program  
Coordinator  
06-9138  
R20 CL  
Juneau

Program  
Coordinator I  
06-3396  
R18 CL  
Juneau

Eligibility  
Technician II  
06-4611  
R14 CL  
Juneau

Social Services  
Program  
Coordinator  
06-3075  
R20 CL  
Juneau

Social Services  
Associate  
06-3704  
R12 CL  
Juneau