

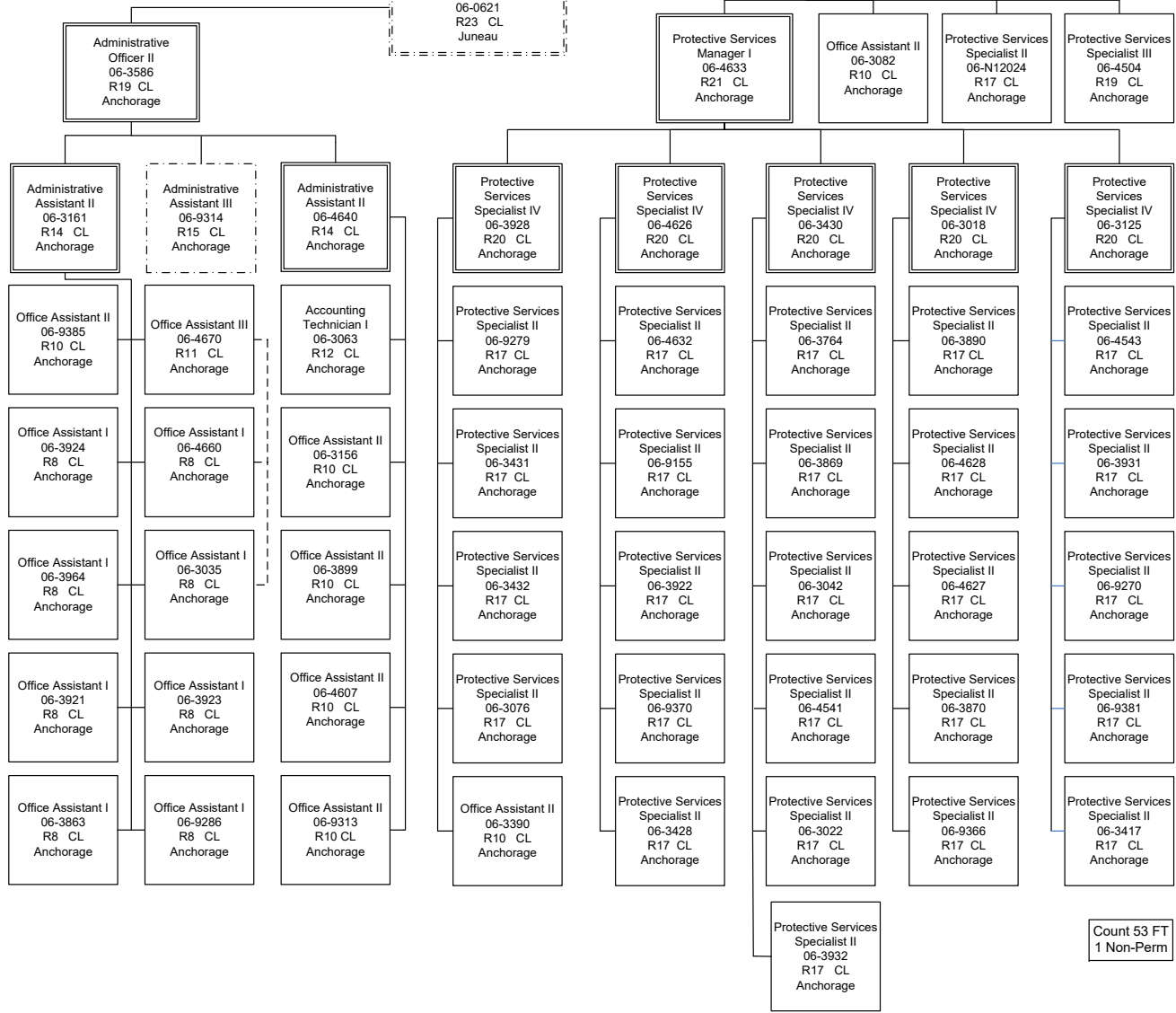
Health and Social Services  
Office of Children's Services  
Front Line Social Workers (2305)  
FY2022 Governor

ADMIN UNIT

Administrative Operations  
Manager II  
06-0621  
R23 CL  
Juneau

FAMILY SERVICES

Protective Services  
Manager II  
06-4506  
R22 CL  
Anchorage



Health and Social Services  
 Office of Children's Services  
 Front Line Social Workers (2305)  
 FY2022 Governor

Protective Services  
 Manager II  
 06-4506  
 R22 CL  
 Anchorage

**APSIN UNIT**

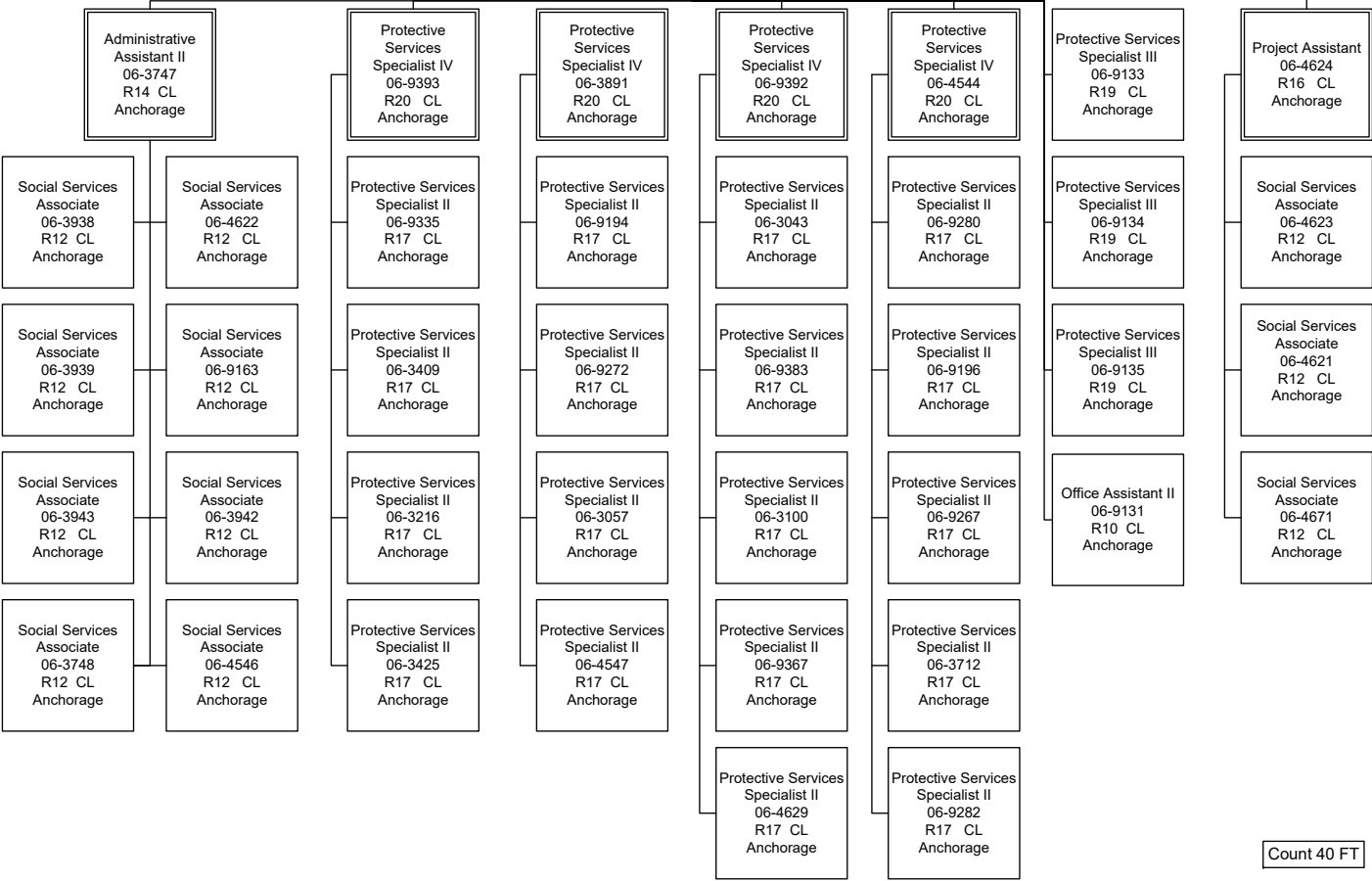
Social Services  
 Program Officer  
 06-3068  
 R21 CL  
 Juneau

Protective  
 Services Specialist  
 III  
 06-4636  
 R19 CL  
 Juneau

Protective Services  
 Manager I  
 06-3878  
 R21 CL  
 Anchorage

**FAMILY SERVICES**

**TDM**



Count 40 FT

Health and Social Services  
Office of Children's Services  
Front Line Social Workers (2305)  
FY2022 Governor

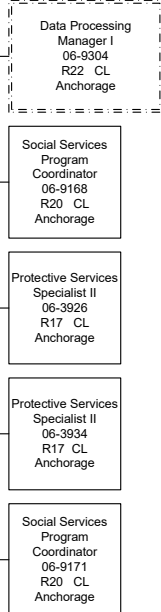
Protective Services  
Manager II  
06-4506  
R22 CL  
Anchorage

Protective Services  
Manager I  
06-3085  
R21 CL  
Anchorage

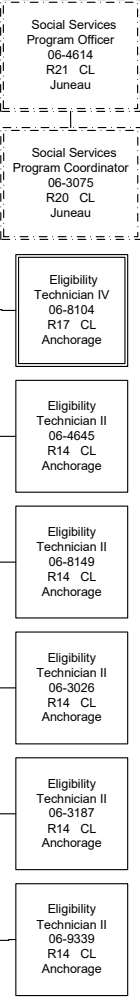
**INITIAL ASSESSMENTS**



**ORCA UNIT**



**ET UNIT**



Count 58 FT

Health and Social Services  
Office of Children's Services  
Front Line Social Workers (2305)  
FY2022 Governor

Social Services  
Program Administrator  
06-4502  
R23 CL  
Anchorage

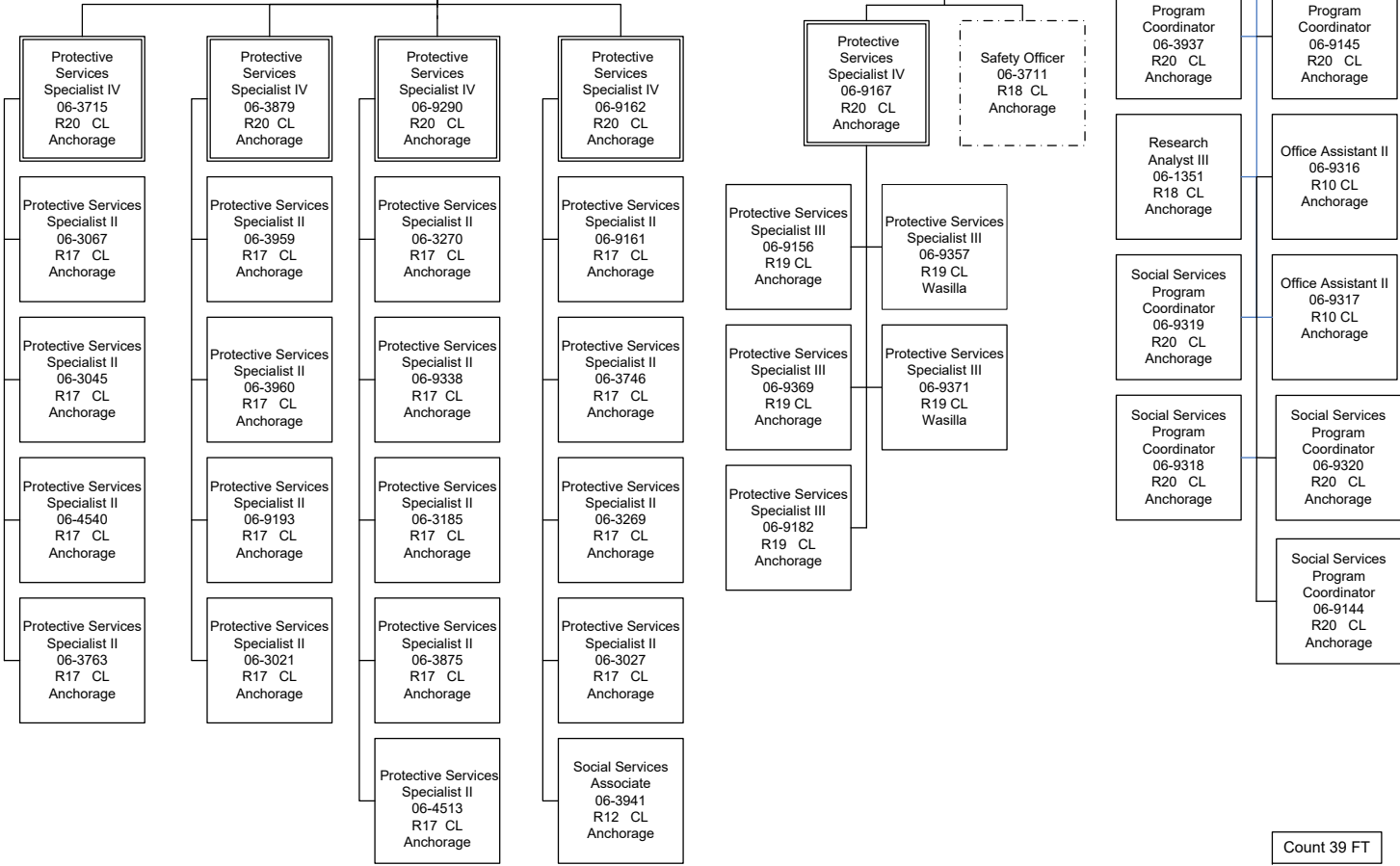
**QUALITY ASSURANCE UNIT**

**CENTRALIZED INTAKE**

Protective Services  
Manager I  
06-3792  
R21 CL  
Anchorage

**Mentor Team/  
Safety**

Social Services  
Program Officer  
06-3421  
R21 CL  
Anchorage



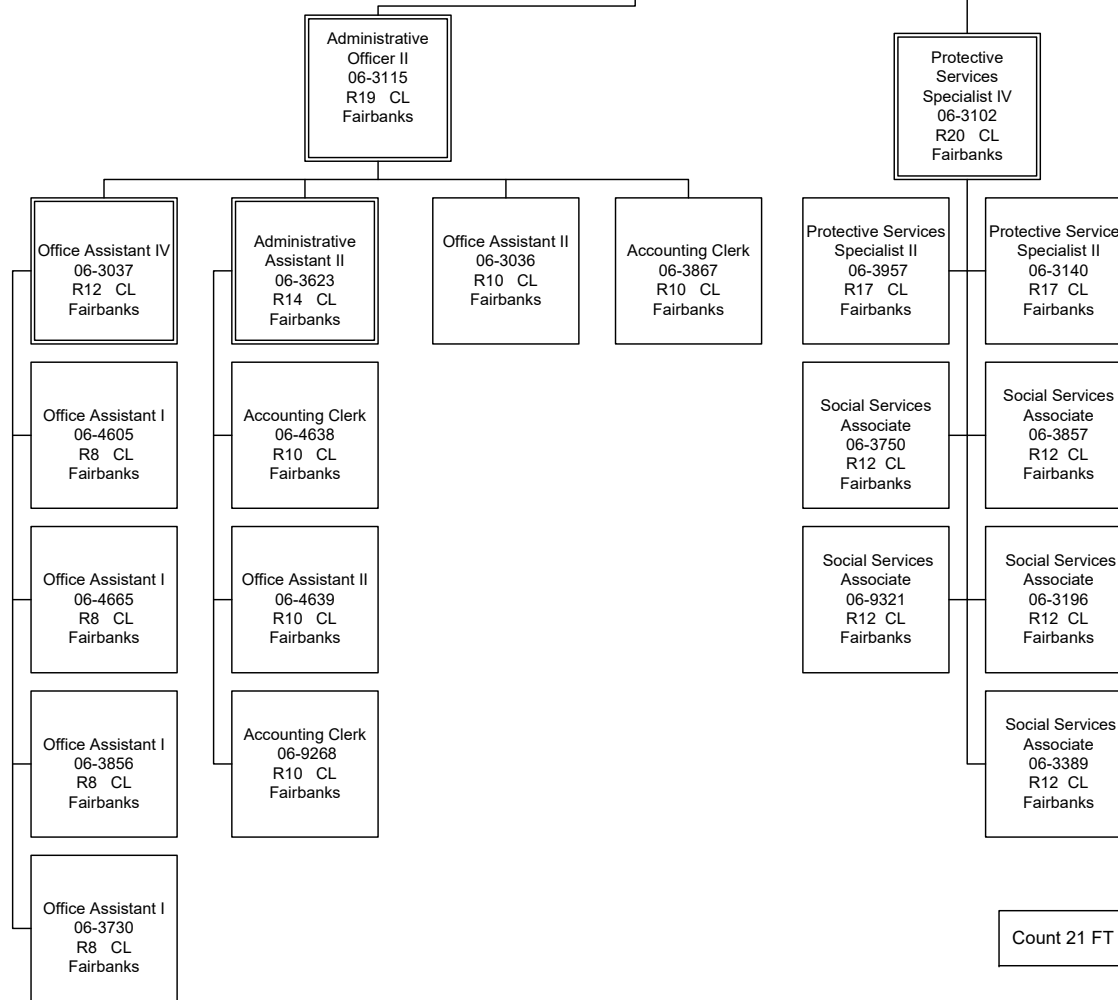
Health and Social Services  
Office of Children's Services  
Front Line Social Workers (2305)  
FY2022 Governor

**ADMIN UNIT**

Administrative Operations  
Manager II  
06-0621  
R23 CL  
Juneau

**PERMANENCY**

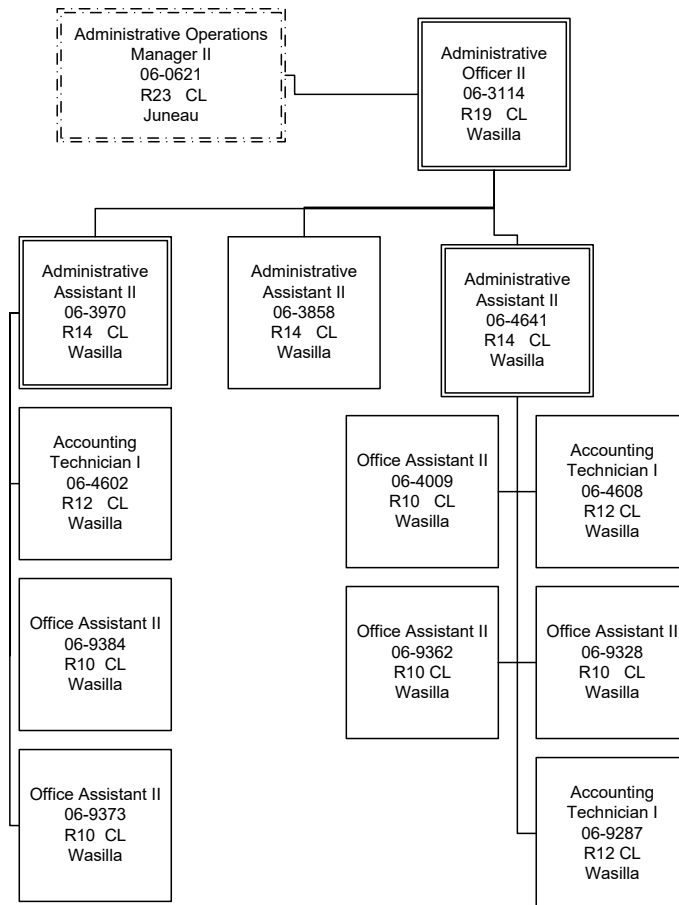
Protective Services  
Manager II  
06-4507  
R22 CL  
Anchorage



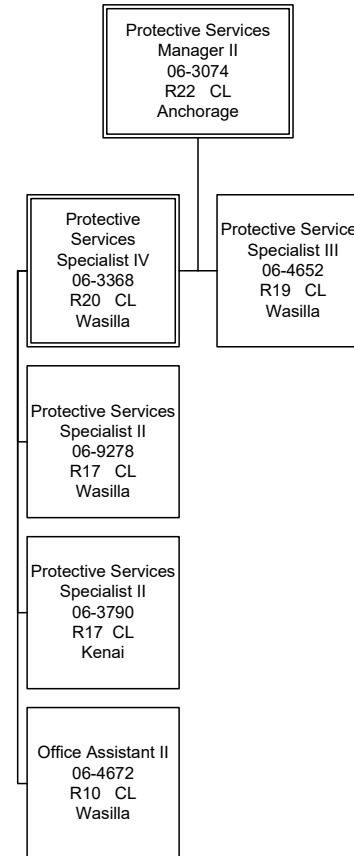
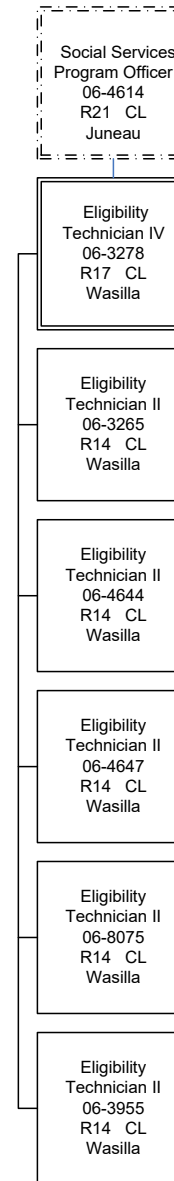


Health and Social Services  
Office of Children's Services  
Front Line Social Workers (2305)  
FY2022 Governor

**ADMIN UNIT**



**ET UNIT**

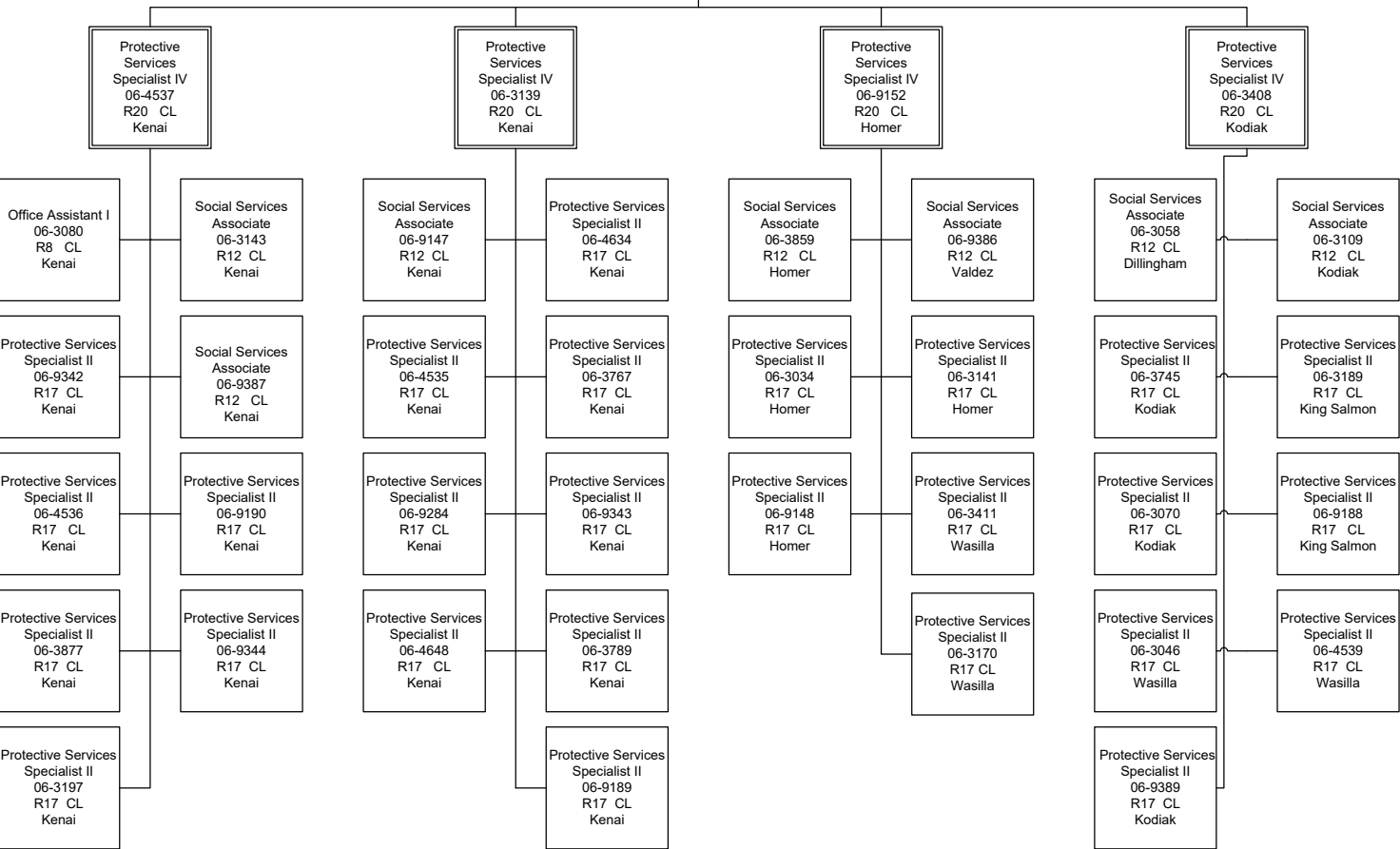


Count 25 FT

Health and Social Services  
Office of Children's Services  
Front Line Social Workers (2305)  
FY2022 Governor

Protective Services  
Manager II  
06-3074  
R22 CL  
Anchorage

Protective Services  
Manager I  
06-9289  
R21 CL  
Kenai



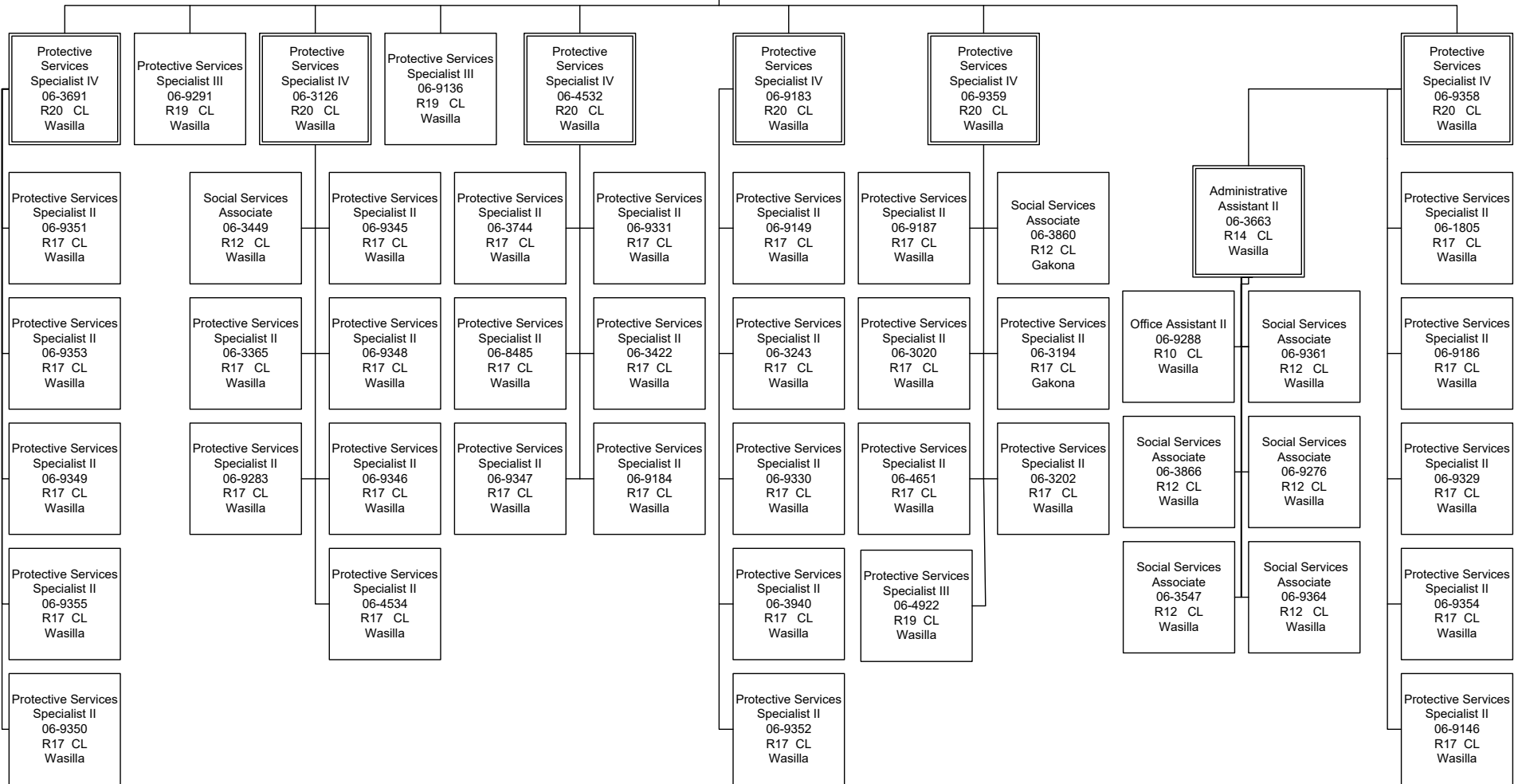
Count 39 FT



Health and Social Services  
Office of Children's Services  
Front Line Social Workers (2305)  
FY2022 Governor

Protective Services  
Manager II  
06-3074  
R22 CL  
Anchorage

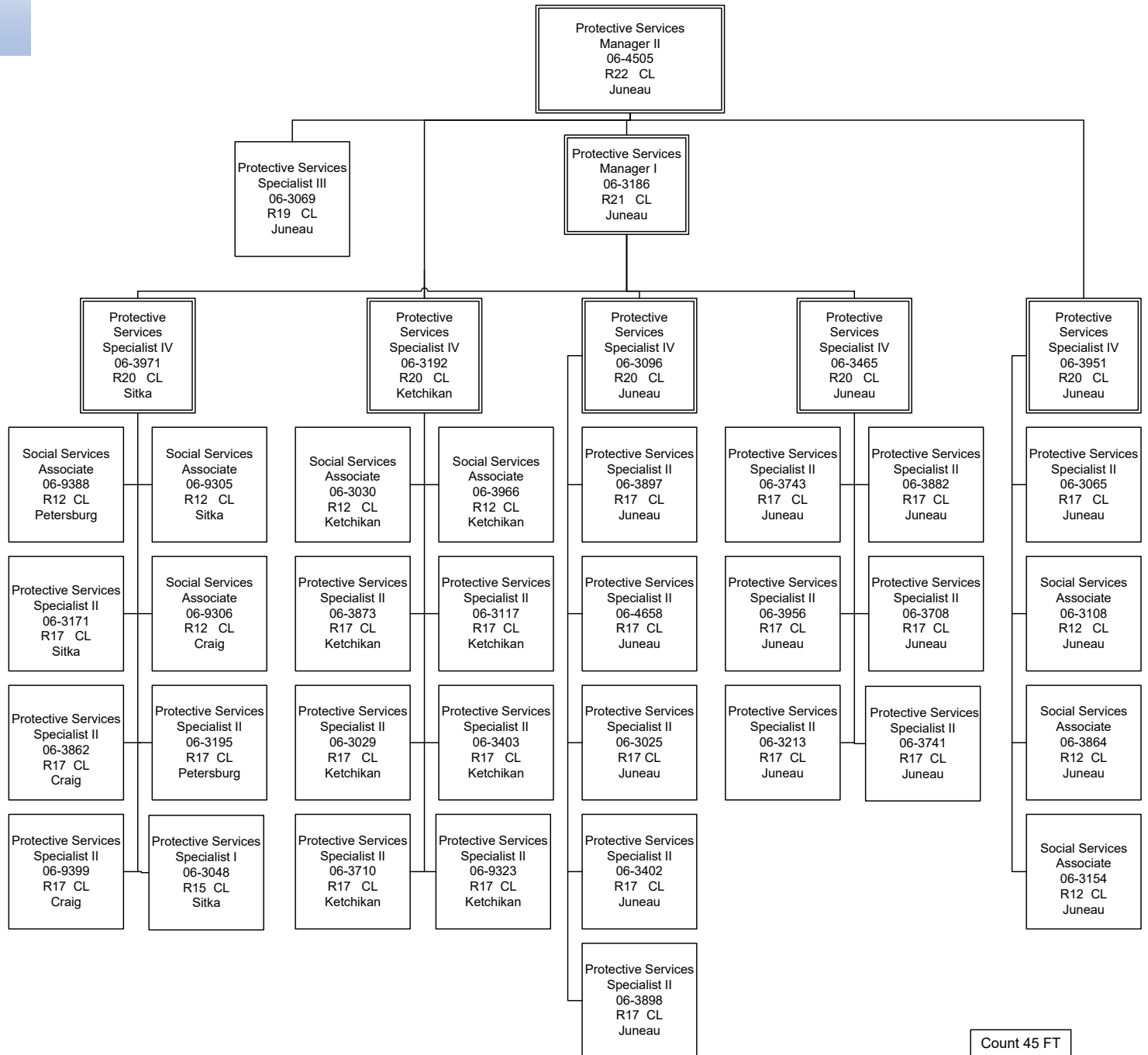
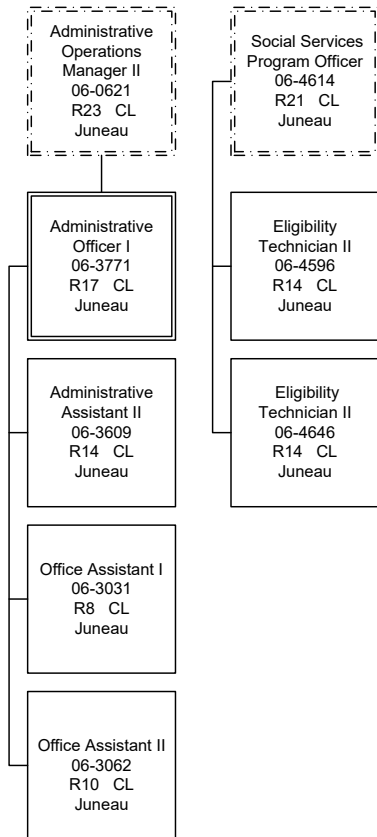
Protective Services  
Manager I  
06-3015  
R21 CL  
Wasilla



Count 51 FT

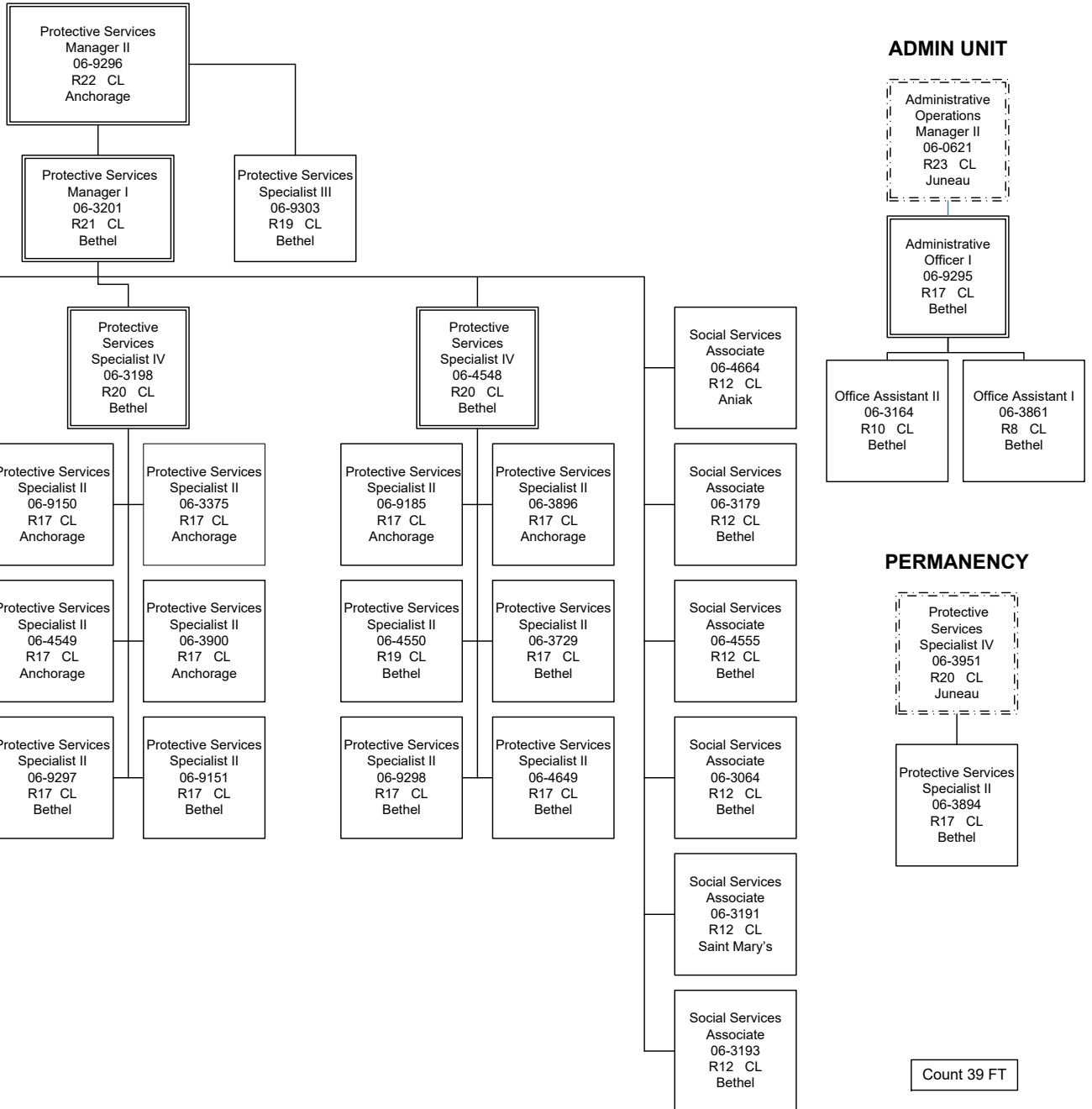
Health and Social Services  
Office of Children's Services  
Front Line Social Workers (2305)  
FY2022 Governor

**ADMIN UNIT**



Count 45 FT

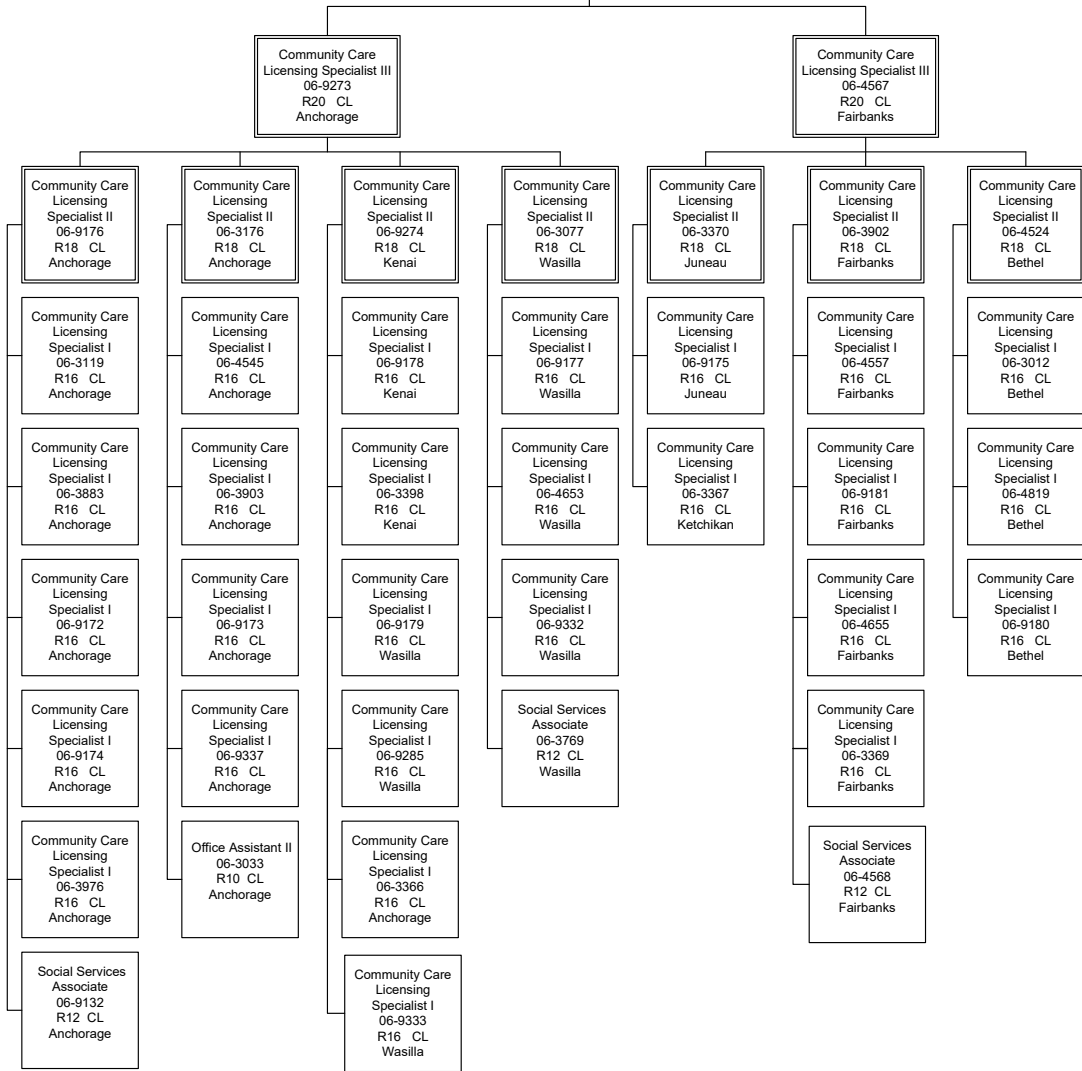
Health and Social Services  
Office of Children's Services  
Front Line Social Workers (2305)  
FY2022 Governor



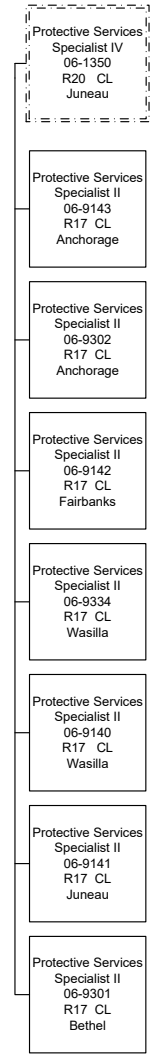
Health and Social Services  
Office of Children's Services  
Front Line Social Workers (2305)  
FY2022 Governor

**LICENSING UNIT**

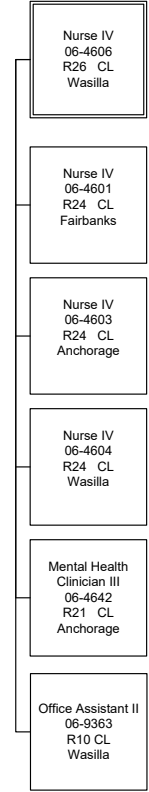
Social Services Program  
Officer  
06-3068  
R21 CL  
Juneau



**INDEPENDENT LIVING UNIT**



**NURSING UNIT**



Count 52 FT

