

Department of Health & Social Services  
Division of Juvenile Justice  
Southcentral Probation Services

06-3666  
Juvenile Probation Officer  
IV  
R20  
Anchorage  
CL

06-3050  
Juvenile Probation  
Officer III  
R18  
Dillingham  
CL

06-3775  
Juvenile Probation  
Officer III  
R18  
Palmer  
CL

06-3668  
Juvenile Probation  
Officer III  
R18  
Palmer  
CL

06-4892  
Juvenile Probation  
Officer III  
R18  
Kenai  
CL

06-4929  
Juvenile Probation  
Officer II  
R16  
Dillingham  
CL

06-3854  
Social Services  
Associate  
R12  
Kodiak  
CL

06-3994  
Juvenile Probation  
Officer II  
R16  
Palmer  
CL

06-3051  
Juvenile Probation  
Officer II  
R16  
Palmer  
CL

06-4919  
Juvenile Probation  
Officer II  
R16  
Palmer  
CL

06-4918  
Juvenile Probation  
Officer II  
R16  
Kenai  
CL

06-3646  
Juvenile Probation  
Officer II  
R16  
Kenai  
CL

06-4932  
Juvenile Probation  
Officer II  
R16  
Kodiak  
CL

06-3664  
Juvenile Probation  
Officer II  
R16  
Palmer  
CL

06-3669  
Social Services  
Associate  
R12  
Palmer  
CL

06-3656  
Juvenile Probation  
Officer II  
R16  
Palmer  
CL

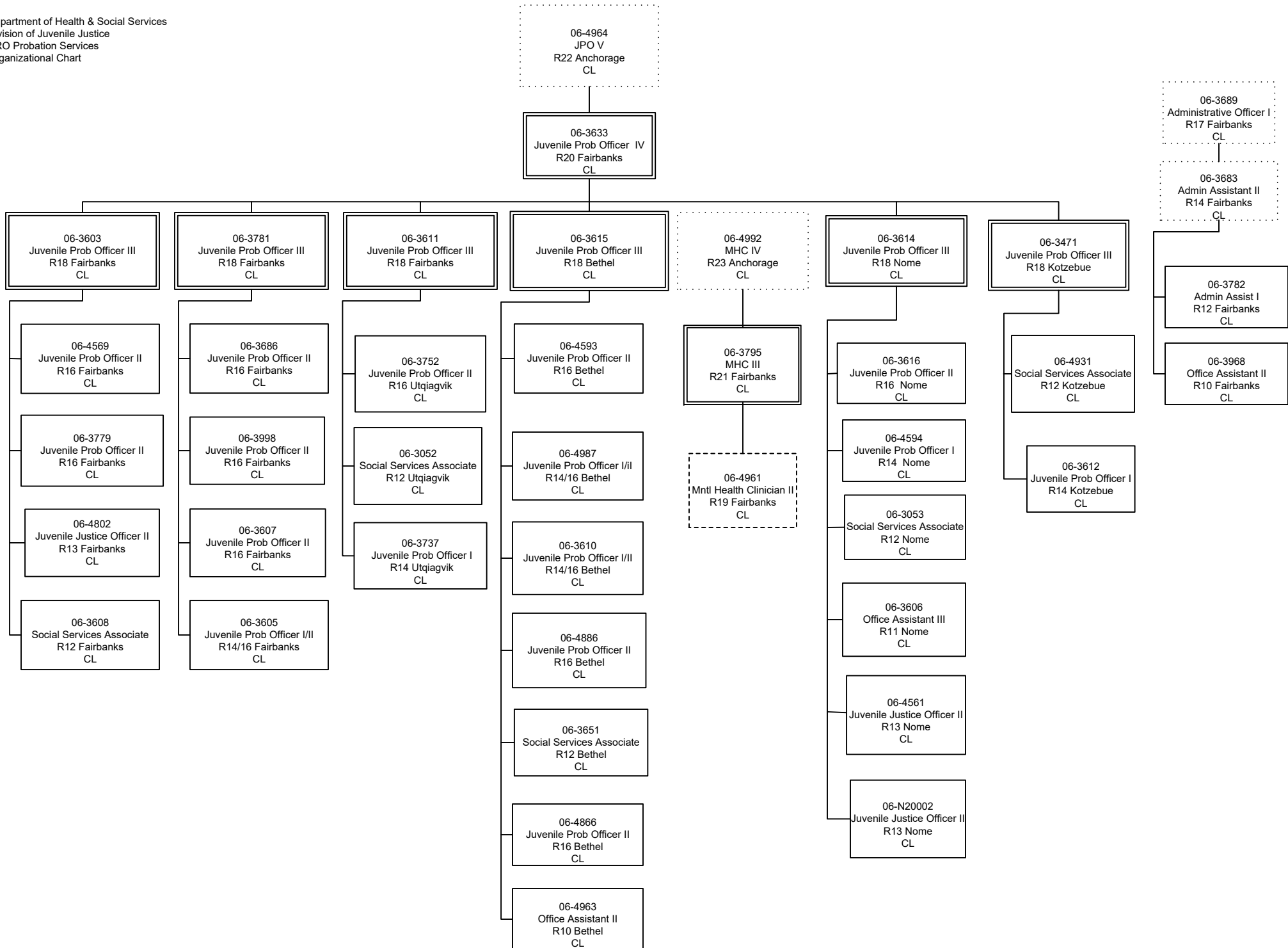
06-3667  
Social Services  
Associate  
R12  
Kenai  
CL

06-3774  
Juvenile Probation  
Officer II  
R16  
Kenai  
CL

06-4927  
Juvenile Probation  
Officer II  
R16  
Palmer  
CL

06-4867  
Juvenile Probation  
Officer I  
R14  
Kenai  
CL

06-4933  
Juvenile Probation  
Officer II  
R16  
Kenai  
CL



**Department of Health & Social Services  
 Division of Juvenile Justice  
 Anchorage Probation Services**

06-3643  
 Juvenile Probation  
 Officer IV  
 R20  
 Anchorage  
 CL

06-4921  
 Mental Health  
 Clinician III  
 R21  
 Anchorage  
 CL

06-3577  
 Administrative  
 Officer II  
 R19  
 Anchorage  
 CL

06-4981  
 Mental Health  
 Clinician II  
 R19  
 Anchorage  
 CL

06-4517  
 Accounting  
 Clerk  
 R10  
 Anchorage  
 CL

06-3644  
 Juvenile Probation  
 Officer III  
 R18  
 Anchorage  
 CL

06-3776  
 Juvenile Probation  
 Officer III  
 R18  
 Anchorage  
 CL

06-4870  
 Juvenile Probation  
 Officer III  
 R18  
 Anchorage  
 CL

06-4876  
 Juvenile Probation  
 Officer III  
 R18  
 Anchorage  
 CL

06-3647  
 Juvenile Probation  
 Officer II  
 R16  
 Anchorage  
 CL

06-4598  
 Juvenile Probation  
 Officer II  
 R16  
 Anchorage  
 CL

06-4599  
 Juvenile Probation  
 Officer II  
 R16  
 Anchorage  
 CL

06-3783  
 Social Services  
 Associate  
 R12  
 Anchorage  
 CL

06-3650  
 Juvenile Probation  
 Officer II  
 R16  
 Anchorage  
 CL

06-4571  
 Juvenile Probation  
 Officer II  
 R16  
 Anchorage  
 CL

06-3952  
 Juvenile Probation  
 Officer II  
 R16  
 Anchorage  
 CL

06-3953  
 Juvenile Probation  
 Officer II  
 R16  
 Anchorage  
 CL

06-3652  
 Juvenile Probation  
 Officer II  
 R16  
 Anchorage  
 CL

06-3486  
 Juvenile Probation  
 Officer II  
 R16  
 Anchorage  
 CL

06-3777  
 Juvenile Probation  
 Officer II  
 R16  
 Anchorage  
 CL

06-4928  
 Juvenile Probation  
 Officer II  
 R16  
 Anchorage  
 CL

06-3660  
 Social Services  
 Associate  
 R12  
 Anchorage  
 CL

06-3661  
 Juvenile Probation  
 Officer II  
 R16  
 Anchorage  
 CL

06-3654  
 Juvenile Probation  
 Officer II  
 R16  
 Anchorage  
 CL

06-4875  
 Social Services  
 Associate  
 R12  
 Anchorage  
 CL

06-3967  
 Social Services  
 Associate  
 R12  
 Anchorage  
 CL

06-3655  
 Juvenile Probation  
 Officer II  
 R16  
 Anchorage  
 CL

06-4868  
 Juvenile Probation  
 Officer II  
 R16  
 Anchorage  
 CL

06-4597  
 Juvenile Probation  
 Officer II  
 R16  
 Anchorage  
 CL

06-3662  
 Juvenile Probation  
 Officer II  
 R16  
 Anchorage  
 CL

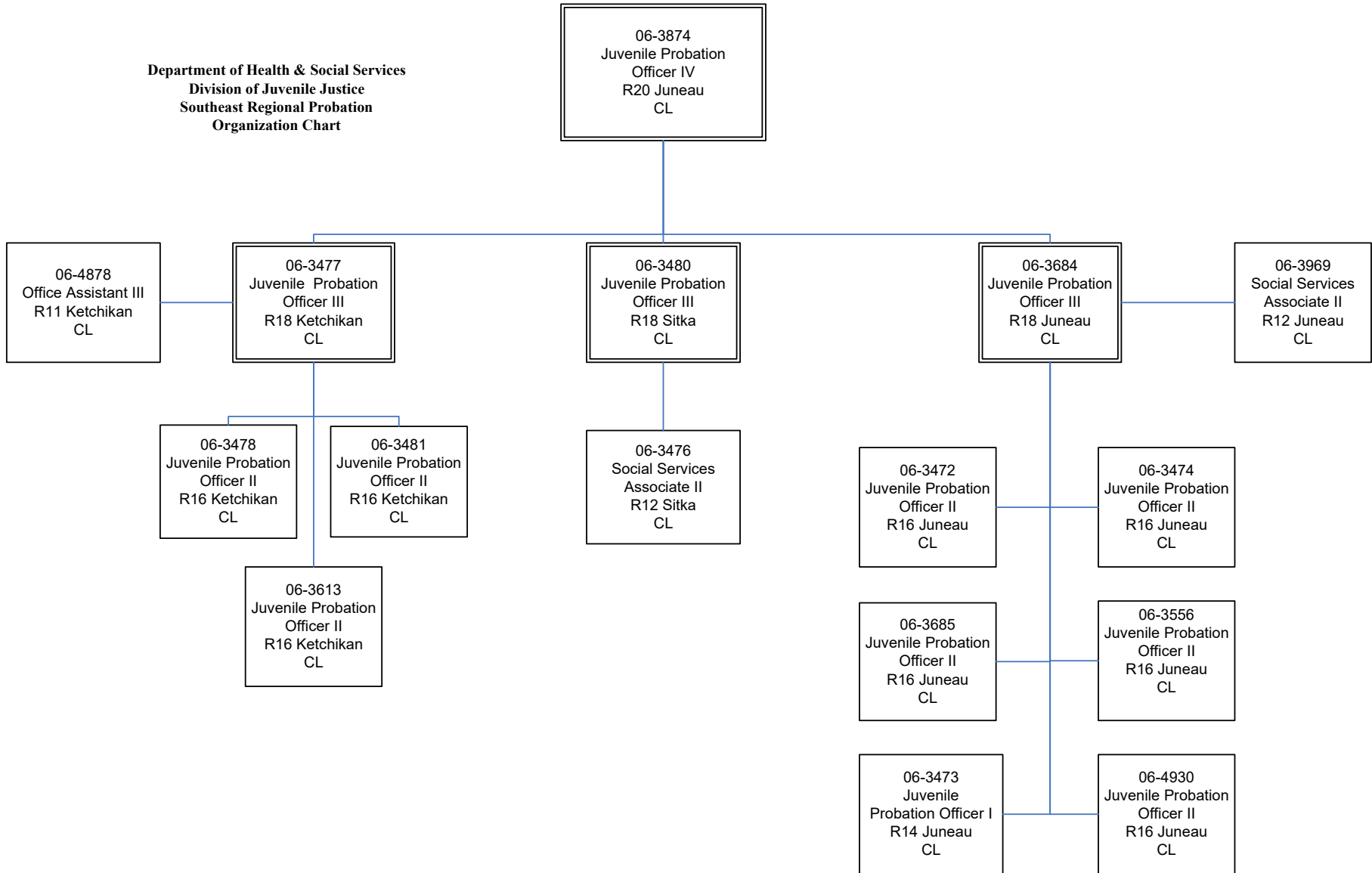
06-3992  
 Juvenile Probation  
 Officer II  
 R16  
 Anchorage  
 CL

06-3778  
 Juvenile Probation  
 Officer II  
 R16  
 Anchorage  
 CL

06-4501  
 Juvenile Probation  
 Officer II  
 R16  
 Anchorage  
 CL

06-3657  
 Office Assistant II  
 R10  
 Anchorage  
 CL

Department of Health & Social Services  
Division of Juvenile Justice  
Southeast Regional Probation  
Organization Chart



Department of Health & Social Services  
 Division of Juvenile Justice  
 Probation Services  
 Director's Office

