

State of Alaska FY2022 Governor's Operating Budget

Department of Health and Social Services Public Assistance Field Services Component Budget Summary

Component: Public Assistance Field Services

Contribution to Department's Mission

Promoting self-sufficiency and providing for basic living expenses to Alaskans in need.

Core Services

- Provide direct customer services in 14 offices statewide.
- Accept applications, conduct interviews, determine eligibility, and authorize timely and accurate benefits for the following programs: Supplemental Nutrition Assistance Program, Alaska Temporary Assistance, Medicaid, Adult Public Assistance, General Relief, Chronic and Acute Medical Assistance, Denali Kid Care, Senior Benefits, Low Income Heating Assistance and Medicare Part D.
- Make referrals and link public assistance recipients to employers, employment services, and social, health, education, and training programs/organizations.
- Collaboration with various departments and divisions in state government as well as regional and community-based organizations to coordinate the effective delivery of services and benefits for common customers.

Major Component Accomplishments in 2020

- Eliminated the backlog of applications and case work for all programs.
- Field staff processed over 77,000 applications; 110,000 renewal and recertifications; and 65,000 reports of change in SFY2020.
- Implemented an Electronic Document Management System.
- Implementation of telework with little to no disruption to service delivery in a no contact environment.
- Applications for public assistance programs are worked in 3 to 7 business days.

Key Component Challenges

- Changes in federal program policies and implementation of new programs and policy changes.
- Procurement and implementation of an integrated online application and renewal and recertification forms.
- Procurement and implementation of electronic notices.
- Integration of all programs into divisional units and continued reorganization to meet the business needs of the agency.

Significant Changes in Results to be Delivered in FY2022

- Implementation of Virtual Call Center to replace desk top phones with software that enables calls to be routed to staff working from home through their laptops.
- Fully integrate all programs in the division to achieve efficiency across all administrative processes.
- Continued integration of the Heating Assistance Program into statewide workflow for more efficient administration of the program
- Procure and implement an online application that is integrated into all programs and systems.
- Procure and implement online forms for reports of change and renewal and recertifications.
- Procure and implement electronic notices.
- Downsize office footprints and lease space.
- Implementation of an Asset Verification System.

Statutory and Regulatory Authority

AS 47.27.005	Duties of the Department
AS 47.25.430-.615	Adult Public Assistance
AS 47.25.975-.990	Food Stamps

AS 47.07.010-.900 Medicaid
AS 47.45.301-.309 Senior Benefits Program
AS 47.25.120-.300 General Relief Assistance
AS 43.23.075 Eligibility For Public Assistance
AS 47.05.010-.080 Public Assistance

Contact Information
<p>Contact: Sylvan Robb, Division Director Phone: (907) 465-1630 E-mail: sylvan.robbs@alaska.gov</p>

Public Assistance Field Services Personal Services Information				
Authorized Positions			Personal Services Costs	
	<u>FY2021</u> <u>Management</u> <u>Plan</u>	<u>FY2022</u> <u>Governor</u>		
Full-time	460	344	Annual Salaries	24,059,743
Part-time	6	0	COLA	269,647
Nonpermanent	0	0	Premium Pay	0
			Annual Benefits	16,570,159
			<i>Less 19.07% Vacancy Factor</i>	<i>(7,799,949)</i>
			Lump Sum Premium Pay	0
Totals	466	344	Total Personal Services	33,099,600

Position Classification Summary					
Job Class Title	Anchorage	Fairbanks	Juneau	Others	Total
Administrative Assistant II	4	1	0	3	8
Chf Pub Asst Fo	1	0	0	0	1
Eligibility Office Manager I	0	0	0	2	2
Eligibility Office Manager II	3	1	1	3	8
Eligibility Technician II	70	20	17	88	195
Eligibility Technician III	21	4	2	20	47
Eligibility Technician IV	9	3	3	11	26
Emp Svc Tech II	0	8	0	18	26
Emp Svc Techiii	0	1	0	2	3
Office Assistant I	16	5	2	16	39
Office Assistant II	7	1	2	11	21
Office Assistant III	1	0	0	0	1
Office Assistant IV	3	1	1	4	9
Pb Asst Fsmii	1	0	0	3	4
Public Assistance Analyst I	9	2	0	0	11
Public Assistance Analyst II	7	0	0	0	7
Public Asst P/O	3	1	0	1	5
Training Specialist I	1	0	0	0	1
Training Specialist II	5	0	0	0	5
Training Specialist III	1	0	0	0	1
Totals	162	48	28	182	420

**Component Detail All Funds
Department of Health and Social Services**

Component: Public Assistance Field Services (236)
RDU: Public Assistance (73)

Non-Formula Component

	FY2020 Actuals	FY2021 Conference Committee	FY2021 Authorized	FY2021 Management Plan	FY2022 Governor	FY2021 Management Plan vs FY2022 Governor	
71000 Personal Services	37,657.5	41,034.6	41,034.6	41,485.4	33,099.6	-8,385.8	-20.2%
72000 Travel	52.4	154.0	154.0	5.1	5.3	0.2	3.9%
73000 Services	14,624.0	16,081.0	16,081.0	16,068.4	14,566.6	-1,501.8	-9.3%
74000 Commodities	847.7	657.0	657.0	657.0	477.0	-180.0	-27.4%
75000 Capital Outlay	17.1	15.0	15.0	15.0	5.0	-10.0	-66.7%
77000 Grants, Benefits	0.0	0.0	0.0	0.0	0.0	0.0	0.0%
78000 Miscellaneous	0.0	0.0	0.0	0.0	0.0	0.0	0.0%
Totals	53,198.7	57,941.6	57,941.6	58,230.9	48,153.5	-10,077.4	-17.3%
Fund Sources:							
1001 CBR Fund (UGF)	0.0	5,476.8	5,476.8	5,476.8	0.0	-5,476.8	-100.0%
1002 Fed Rcpts (Fed)	27,847.9	33,580.8	33,580.8	33,598.4	28,493.6	-5,104.8	-15.2%
1003 G/F Match (UGF)	23,105.1	16,430.2	16,430.2	16,701.9	17,193.9	492.0	2.9%
1007 I/A Rcpts (Other)	2,056.7	2,307.9	2,307.9	2,307.9	2,320.1	12.2	0.5%
1108 Stat Desig (Other)	189.0	145.9	145.9	145.9	145.9	0.0	0.0%
Unrestricted General (UGF)	23,105.1	21,907.0	21,907.0	22,178.7	17,193.9	-4,984.8	-22.5%
Designated General (DGF)	0.0	0.0	0.0	0.0	0.0	0.0	0.0%
Other Funds	2,245.7	2,453.8	2,453.8	2,453.8	2,466.0	12.2	0.5%
Federal Funds	27,847.9	33,580.8	33,580.8	33,598.4	28,493.6	-5,104.8	-15.2%
Positions:							
Permanent Full Time	456	456	456	460	344	-116	-25.2%
Permanent Part Time	8	8	8	6	0	-6	-100.0%
Non Permanent	0	0	0	0	0	0	0.0%

Change Record Detail - Multiple Scenarios with Descriptions
Department of Health and Social Services

Component: Public Assistance Field Services (236)
RDU: Public Assistance (73)

Scenario/Change Record Title	Trans Type	Totals	Personal Services	Travel	Services	Commodities	Capital Outlay	Grants, Benefits	Miscellaneous	Positions		NP
										PFT	PPT	
***** Changes From FY2021 Conference Committee To FY2021 Authorized *****												
Conference Committee												
	ConfCom	57,941.6	41,034.6	154.0	16,081.0	657.0	15.0	0.0	0.0	456	8	0
1001 CBR Fund		5,476.8										
1002 Fed Rcpts		33,580.8										
1003 G/F Match		16,430.2										
1007 I/A Rcpts		2,307.9										
1108 Stat Desig		145.9										
Subtotal		57,941.6	41,034.6	154.0	16,081.0	657.0	15.0	0.0	0.0	456	8	0
***** Changes From FY2021 Authorized To FY2021 Management Plan *****												
Transfer Public Assistance Analysts from Quality Control for Business Alignment												
	Trin	389.2	389.2	0.0	0.0	0.0	0.0	0.0	0.0	4	0	0
1002 Fed Rcpts		65.6										
1003 G/F Match		323.6										
<p>The following positions are transferred from Quality Control to align with spending and duties. These positions support Public Assistance Field Services staff and the payroll has been funded from this component in recent years.</p> <p>Full-time Public Assistance Analyst II (06-8048), range 18, located in Anchorage Full-time Public Assistance Analyst II (06-8589), range 18, located in Anchorage Full-time Public Assistance Analyst II (06-8519), range 18, located in Anchorage Full-time Public Assistance Analyst I (05-2302), range 16, located in Anchorage</p>												
Align Authority with Anticipated Expenditures												
	LIT	0.0	161.5	-148.9	-12.6	0.0	0.0	0.0	0.0	0	0	0
<p>Transfer authority from travel and services to cover anticipated personal services costs. The remaining travel and services authority is sufficient to cover anticipated expenditures.</p>												
Transfer Community Care Licensing Specialist (06-8648) to Child Care Benefits for Process Alignment												
	Trout	0.0	0.0	0.0	0.0	0.0	0.0	0.0	0.0	-1	0	0
<p>Transfer a full-time Community Care Licensing Specialist I (06-8648), range 16, located in Anchorage from Public Assistance Field Services to absorb work currently being performed outside the state. There is a cost savings with this change due to eliminating duplication of current work efforts.</p>												
Change Eligibility Technicians (06-8217) and (06-8291) to Support Statewide Eligibility Workload												
	PosAdj	0.0	0.0	0.0	0.0	0.0	0.0	0.0	0.0	2	-2	0
<p>Change two Eligibility Technician I positions (06-8217) and (06-8291), range 13, located in Juneau from part-time seasonal to full-time to support statewide eligibility workload.</p>												

Change Record Detail - Multiple Scenarios with Descriptions
Department of Health and Social Services

Component: Public Assistance Field Services (236)
RDU: Public Assistance (73)

Scenario/Change Record Title	Trans Type	Totals	Personal Services	Travel	Services	Commodities	Capital Outlay	Grants, Benefits	Miscellaneous	Positions		
										PFT	PPT	NP
Transfer Administrative Officer I (06-8703) to Public Assistance Administration for Director's Office Support												
	Trout	-99.9	-99.9	0.0	0.0	0.0	0.0	0.0	0.0	-1	0	0
1002 Fed Rcpts		-48.0										
1003 G/F Match		-51.9										
Transfer full time Administrative Officer I (06-8703), range 17, located in Anchorage to Public Assistance Administration to support the Director's Office initiatives and lead Administrative Assistant team.												
Subtotal		58,230.9	41,485.4	5.1	16,068.4	657.0	15.0	0.0	0.0	460	6	0
***** Changes From FY2021 Management Plan To FY2022 Governor *****												
Reverse New Positions to Address Increased Caseloads (FY19-FY21)												
	OTI	-2,214.3	-2,051.0	-10.0	-100.0	-53.3	0.0	0.0	0.0	-20	0	0
1002 Fed Rcpts		-1,107.2										
1003 G/F Match		-1,107.1										

The division's application backlog began to steadily increase in FY2014. The increase is mostly attributed to the following: the introduction of modified adjusted gross income Medicaid; introduction of a new eligibility information system which resulted in the need for staff to calculate modified adjusted gross income Medicaid eligibility using a manual budget sheet; loss of staff productivity due to training on the new system; staff continuing to work in both the new and legacy eligibility systems as not all programs are on the new system; consistent increase in customers applying for services; and the elimination of nonpermanent staff which were funded by the Mental Health Trust.

While the majority of public assistance program case levels have remained relatively steady over the last five years, there has been an increase in Medicaid and Supplemental Nutrition Assistance Program cases. Medicaid cases have increased by approximately 43,000 and Supplemental Nutrition Assistance Program by approximately 7,500 between FY2012 and FY2017. The division receives approximately 11,000 applications a month, 8,000 of those are for Medicaid or the Supplemental Nutrition Assistance Program.

The 2018 Legislature approved 20 new positions and \$2,214.3 temporary authority for FY2019 through FY2021. In the time since this initiative took effect, the division has eliminated the statewide backlog. These positions are no longer needed in FY2022.

- Full-time, Eligibility Technician II (06-8440), range 14, located in Anchorage
- Full-time, Eligibility Technician II (06-8462), range 14, located in Anchorage
- Full-time, Eligibility Technician II (06-8478), range 14, located in Fairbanks
- Full-time, Eligibility Technician II (06-8480), range 14, located in Fairbanks
- Full-time, Eligibility Technician II (06-8486), range 14, located in Anchorage
- Full-time, Eligibility Technician II (06-8488), range 14, located in Wasilla
- Full-time, Eligibility Technician II (06-8499), range 14, located in Anchorage
- Full-time, Office Assistant II (06-8514), range 10, located in Anchorage
- Full-time, Eligibility Technician II (06-8522), range 14, located in Anchorage
- Full-time, Eligibility Technician II (06-8545), range 14, located in Wasilla

Change Record Detail - Multiple Scenarios with Descriptions
Department of Health and Social Services

Component: Public Assistance Field Services (236)

RDU: Public Assistance (73)

Scenario/Change Record Title	Trans Type	Totals	Personal Services	Travel	Services	Commodities	Capital Outlay	Grants, Benefits	Miscellaneous	Positions		
										PFT	PPT	NP
Full-time, Eligibility Technician II (06-8569), range 14, located in Juneau												
Full-time, Office Assistant I (06-8601), range 8, located in Anchorage												
Full-time, Eligibility Technician II (06-8602), range 14, located in Anchorage												
Full-time, Eligibility Technician II (06-8604), range 14, located in Anchorage												
Full-time, Eligibility Technician II (06-8607), range 14, located in Anchorage												
Full-time, Eligibility Technician II (06-8631), range 14, located in Wasilla												
Full-time, Eligibility Technician II (06-8677), range 14, located in Wasilla												
Full-time, Office Assistant II (06-8690), range 10, located in Anchorage												
Full-time, Office Assistant II (06-8692), range 10, located in Anchorage												
Full-time, Office Assistant II (06-8693), range 10, located in Anchorage												
FY2022 Salary Adjustments												
SalAdj		285.7	285.7	0.0	0.0	0.0	0.0	0.0	0.0	0	0	0
1002 Fed Rcpts		149.0										
1003 G/F Match		124.5										
1007 I/A Rcpts		12.2										
FY2022 1% COLA for ASEA/General Government (GG/GP/GY/GZ): \$285.7												
Delete Public Assistance Positions Due to Efficiencies												
Dec		-7,010.2	-6,783.2	0.0	-227.0	0.0	0.0	0.0	0.0	-101	0	0
1002 Fed Rcpts		-3,577.3										
1003 G/F Match		-3,432.9										
Due to telework and advancing technology related to Electronic Document Management (EDM) the division is processing incoming work more efficiently. In FY2021, continued technological advancement is being implemented to have the renewal and recertification processes for all programs available electronically. This will allow for continued streamlined efficiency in workload management and reduce paper, postage and staff time spent on mail. Additionally, a reduction in Department of Administration and Departmental Support Services chargeback costs is anticipated as positions are deleted from the division.												
Public Assistance Telecom Savings												
Dec		-130.2	0.0	0.0	-130.2	0.0	0.0	0.0	0.0	0	0	0
1002 Fed Rcpts		-65.1										
1003 G/F Match		-65.1										
The Division of Public Assistance is implementing a virtual call center that will utilize software to place and receive phone calls. This will eliminate the need for desktop phones in offices.												
Public Assistance Supplies Reduction												
Dec		-320.0	0.0	0.0	0.0	-320.0	0.0	0.0	0.0	0	0	0
1002 Fed Rcpts		-160.0										
1003 G/F Match		-160.0										

Change Record Detail - Multiple Scenarios with Descriptions
Department of Health and Social Services

Component: Public Assistance Field Services (236)
RDU: Public Assistance (73)

Scenario/Change Record Title	Trans Type	Totals	Personal Services	Travel	Services	Commodities	Capital Outlay	Grants, Benefits	Miscellaneous	Positions		NP
										PFT	PPT	
<p>Due to telework and advancing technology related to Electronic Document Management (EDM), the Division of Public Assistance is processing incoming work more efficiently. In FY2021 continued technological advancement is being implemented to have the renewal and recertification processes for all programs available electronically. This will allow for continued streamlined efficiency in workload management and reduce paper, postage and staff time spent on mail.</p>												
Public Assistance Postage Reduction												
	Dec	-688.4	0.0	0.0	-688.4	0.0	0.0	0.0	0.0	0	0	0
1002 Fed Rcpts		-344.2										
1003 G/F Match		-344.2										
<p>Renewal notices are sent out two times per benefit program for every recertification period. This constitutes multiple costs for paper, postage and envelopes for every recipient of the various benefits programs. A reduction in the services line item will be achieved by having an electronic renewal and recertification option as well as electronic notices available to recipients.</p>												
Transfer Procurement Spe II (06-8196) to the Office of Procurement and Property Management for Procurement Consolidation												
	Atroat	0.0	0.0	0.0	0.0	0.0	0.0	0.0	0.0	-1	0	0
<p>Transfer a full-time Eligibility Technician II (06-8196), range 14, located in Juneau procurement positions to the Department of Administration, Office of Procurement and Property Management for procurement consolidation. The position is reclassified to a full-time, Procurement Specialist II, range 16, located in Juneau.</p>												
Change Eligibility Technicians to Full-time to Support Statewide Eligibility Workload												
	PosAdj	0.0	0.0	0.0	0.0	0.0	0.0	0.0	0.0	6	-6	0
<p>Change six Eligibility Technician I positions (06-8219), (06-8220), (06-8290), (06-8292), (06-8293) and (06-8455), range 14, located in Juneau from part-time seasonal to full-time to support statewide eligibility workload.</p>												
Fund Source Adjustment of CBRF to UGF												
	FndChg	0.0	0.0	0.0	0.0	0.0	0.0	0.0	0.0	0	0	0
1001 CBR Fund		-5,476.8										
1003 G/F Match		5,476.8										
<p>Replace Constitutional Budget Reserve Fund (CBRF) used as a one-time funding mechanism in FY2021.</p>												
Transfer Authority from Services and Capital Outlay to Personal Services, Travel, and Commodities												
	LIT	0.0	162.7	10.2	-356.2	193.3	-10.0	0.0	0.0	0	0	0
<p>Transfer authority from services and capital outlay to cover anticipated personal services costs, travel, and commodities costs. The remaining services and capital outlay authority is anticipated to be sufficient to cover operating expenditures.</p>												
Totals		48,153.5	33,099.6	5.3	14,566.6	477.0	5.0	0.0	0.0	344	0	0

Line Item Detail (1676)
Department of Health and Social Services
Travel

Component: Public Assistance Field Services (236)

Line Number	Line Name		FY2020 Actuals	FY2021 Management Plan	FY2022 Governor
2000	Travel		52.4	5.1	5.3
Object Class	Servicing Agency	Explanation	FY2020 Actuals	FY2021 Management Plan	FY2022 Governor
2000 Travel Detail Totals			52.4	5.1	5.3
2000	In-State Employee Travel	In state travel for employees.	48.0	5.1	5.3
		In-state travel for new worker training and reinforcement training for experienced employees. This travel and per diem is necessary for worker training in rural areas as well as for attendance for new and experienced workers at periodic specialized training sessions. Most of the 14 Division of Public Assistance (DPA) district offices participate at different levels in this training program each year. This provides travel resources for DPA program training of Fee Agents who provide DPA application processing services in over 150 rural communities.			
2002	Out of State Employee Travel	Travel for training and/or conferences out of state.	3.0	0.0	0.0
2005	Moving Costs	Moving Costs	1.7	0.0	0.0
2006	Other Travel Costs	Other Travel Costs	-0.3	0.0	0.0

Line Item Detail (1676)
Department of Health and Social Services
Services

Component: Public Assistance Field Services (236)

Line Number	Line Name		FY2020 Actuals	FY2021 Management Plan	FY2022 Governor
3000	Services		14,624.0	16,068.4	14,566.6
Object Class	Servicing Agency	Explanation	FY2020 Actuals	FY2021 Management Plan	FY2022 Governor
3000 Services Detail Totals			14,624.0	16,068.4	14,566.6
3000	Education Services	Crises prevention training. Supervisor Training	5.9	0.0	6.0
3001	Financial Services	The State pays the current contractor based on a cost-per-case-month for each time a benefit is loaded on the Alaska QUEST Card and for the direct deposits made each month. This also includes access and support managing the contract Web Admin Browser and Disaster Services. Fee agents.	40.5	255.0	40.5
3003	Information Technology	Software & Licensing. Contract work for Tax Equity and Fiscal Responsibility Act Medicaid with Qualis Health.	1,108.6	1,600.0	1,200.0
3004	Telecommunications	Telecommunications for vendor local, long distance, network installation and equipment rental, dedicated telephone lines for office equipment, telecopier expenses and teleconference charges.	220.7	210.0	260.0
3006	Delivery Services	Freight/shipping, express charges and postage for Public Assistance (PA) local field offices and postage for PA recipient mailings (computer generated mailings include recipient benefits, notices and recertifications).	1,026.7	1,200.0	1,026.7

Line Item Detail (1676)
Department of Health and Social Services
Services

Component: Public Assistance Field Services (236)

Object Class	Servicing Agency	Explanation	FY2020 Actuals	FY2021 Management Plan	FY2022 Governor	
3000 Services Detail Totals			14,624.0	16,068.4	14,566.6	
3007	Advertising and Promotions	Advertising for required public notice program changes and services.	0.4	0.5	0.5	
3008	Utilities	Public Utilities Services - Electricity and utilities not included in certain district office lease agreements.	38.3	35.0	38.3	
3009	Structure/Infrastructure/Land	Structure changes to work space to better align the business process.	95.8	100.0	100.0	
3010	Equipment/Machinery	Contractual costs for maintenance and replacement of state owned equipment.	198.0	200.0	200.0	
3011	Other Services	Telephone interpreter service contract. Fee Agents. Printing Services. Safety Services. Consulting Services. Software Licenses	2,384.9	2,450.0	2,385.0	
3017	Inter-Agency Information Technology Non-Telecommunications	Admin - Department-wide	Reimbursable Services Agreement for Management Information Computer Systems, Reimbursable Services Agreement for Office of Information Technology Core Services, Reimbursable Services Agreement for Alaska's Resource for Integrated Eligibility Services Server Hosting, Microsoft License Chargeback	1,362.1	1,076.0	1,400.0
3017	Inter-Agency Information Technology Non-Telecommunications	H&SS - Information Technology Services (2754)	Reimbursable Services Agreement for Information Technology Customer Services and Network Services, Business Applications Support, Heating Assistance Program Operating System.	2,060.4	2,514.5	2,200.0
3017	Inter-Agency Information Technology Non-Telecommunications	H&SS - Public Assistance Field Svcs (236)	Alaska Ehealth Network charges	27.5	0.0	27.5

Line Item Detail (1676)
Department of Health and Social Services
Services

Component: Public Assistance Field Services (236)

Object Class	Servicing Agency	Explanation	FY2020 Actuals	FY2021 Management Plan	FY2022 Governor
3000 Services Detail Totals			14,624.0	16,068.4	14,566.6
3018	Inter-Agency Information Technology Telecommunications	Admin - Department-wide Telephone Services for field services offices.	1,547.3	1,681.5	1,550.0
		Reimbursable Services Agreement with Department of Administration, Enterprise Technology Services for Telecommunication.			
3019	Inter-Agency Storage	H&SS - Public Assistance Field Svcs (236) Storage	8.2	8.5	8.2
3021	Inter-Agency Mail	Admin - Department-wide Reimbursable Services Agreement for central mail services.	14.0	28.0	14.0
3022	Inter-Agency Human Resources	Admin - Department-wide Reimbursable Services Agreement with Department of Administration for Human Resources.	309.4	335.5	309.4
3022	Inter-Agency Human Resources	H&SS - Public Assistance Field Svcs (236)	0.1	0.0	0.1
3023	Inter-Agency Building Leases	Admin - Department-wide Building Leases	2,460.6	2,460.6	2,079.1
3023	Inter-Agency Building Leases	Trans - Department-wide Leasing agreements in Kodiak and Sitka with the Department of Transportation	15.2	23.0	15.2
3024	Inter-Agency Legal	H&SS - Public Assistance Field Svcs (236)	0.1	0.0	0.0
3024	Inter-Agency Legal	Law - Department-wide Reimbursable Services Agreement for regulation review and Health Insurance Portability and Accountability Act compliance.	7.6	9.1	13.0
3026	Inter-Agency Insurance	Admin - Department-wide Reimbursable Services Agreement with the Department of Administration Risk Management for insurance.	27.6	30.0	28.0
3027	Inter-Agency Financial	Admin - Department-wide Reimbursable Services Agreement for Integrated Resource Information System (IRIS) financial, IRIS payroll,	111.2	123.2	111.2

Line Item Detail (1676)
Department of Health and Social Services
Services

Component: Public Assistance Field Services (236)

Object Class	Servicing Agency	Explanation	FY2020 Actuals	FY2021 Management Plan	FY2022 Governor
3000 Services Detail Totals			14,624.0	16,068.4	14,566.6
		and Alaska Data Enterprise Reporting.			
3028	Inter-Agency Americans with Disabilities Act Compliance	Admin - Department-wide Reimbursable Services Agreement for Americans with Disabilities Act compliance services.	3.4	3.7	3.5
3030	Inter-Agency Hearing/Mediation	Admin - Department-wide Fair Hearing Services	2.7	0.0	0.0
3032	Inter-Agency Health	H&SS - Bureau of Vital Statistics (961) Reimbursable Services Agreement with Division of Public Health's Bureau of Vital Statistics.	16.3	25.0	16.5
3037	State Equipment Fleet	Trans - Department-wide Fuel and vehicle service charges	24.6	30.0	25.0
3038	Inter-Agency Management/Consulting	Admin - Department-wide Reimbursable Services Agreement for SSOA Travel Initiative and AAPEX Chargeback.	61.3	379.5	61.3
3038	Inter-Agency Management/Consulting	Gov - Department-wide Implementing administrative order 302 - Administrative Support Director to Office of Management and Budget, Office of Management and Budget budget analyst support	65.2	0.0	65.2
3038	Inter-Agency Management/Consulting	H&SS - Administrative Support Svcs (320) Reimbursable Services Agreement for administrative and finance and management services.	181.4	200.0	181.4
3038	Inter-Agency Management/Consulting	H&SS - Commissioner's Office (317) Reimbursable Services Agreement for Commissioner's Office Support	34.6	37.6	34.6
3038	Inter-Agency Management/Consulting	H&SS - Information Technology Services (2754) Reimbursable Services Agreement for ARIES Support Services	497.1	500.0	500.0
3038	Inter-Agency Management/Consulting	H&SS - Public Affairs (2874) Reimbursable Services Agreement for Public Affairs	54.7	86.6	54.7
3038	Inter-Agency Management/Consulting	H&SS - Senior/Disabilities Svcs Admin (2663) Reimbursable Services Agreement for Tax Equity and Fiscal Responsibility Act (TEFRA).	181.4	158.0	181.4
3038	Inter-Agency Management/Consulting	Labor - Department-wide Reimbursable Services Agreement with the Disability Determination	310.2	307.6	310.3

Line Item Detail (1676)
Department of Health and Social Services
Services

Component: Public Assistance Field Services (236)

Object Class	Servicing Agency	Explanation	FY2020 Actuals	FY2021 Management Plan	FY2022 Governor
3000 Services Detail Totals			14,624.0	16,068.4	14,566.6
		Services (under Dept of Labor VOC Rehab) for the state only disability determinations for Medicaid applicants who need a disability decision as part of Medicaid eligibility. Reimbursable Services Agreement for Alaska Workforce Investment Board, Secure Access Management (SAM), Population Estimates Demographic Support.			
3038	Inter-Agency Management/Consulting	Rev - Department-wide	120.0	0.0	120.0

Line Item Detail (1676)
Department of Health and Social Services
Commodities

Component: Public Assistance Field Services (236)

Line Number	Line Name		FY2020 Actuals	FY2021 Management Plan	FY2022 Governor
4000	Commodities		847.7	657.0	477.0
Object Class	Servicing Agency	Explanation	FY2020 Actuals	FY2021 Management Plan	FY2022 Governor
4000 Commodities Detail Totals			847.7	657.0	477.0
4000	Business	Office supplies. Computer Refresh. Subscription for Geonorth Information Systems. Office construction.	838.6	657.0	477.0
4002	Household/Institutional	Office Supplies	1.9	0.0	0.0
4003	Scientific and Medical	Office Supplies	0.7	0.0	0.0
4004	Safety	Office Security	6.3	0.0	0.0
4019	Small Tools/Minor Equipment	Office Supplies	0.2	0.0	0.0

Line Item Detail (1676)
Department of Health and Social Services
Capital Outlay

Component: Public Assistance Field Services (236)

Line Number	Line Name		FY2020 Actuals	FY2021 Management Plan	FY2022 Governor
5000	Capital Outlay		17.1	15.0	5.0
Object Class	Servicing Agency	Explanation	FY2020 Actuals	FY2021 Management Plan	FY2022 Governor
5000 Capital Outlay Detail Totals			17.1	15.0	5.0
5002	Structures and Infrastructure	Office Supplies	0.1	0.0	0.0
5004	Equipment	Copier	17.0	15.0	5.0

Revenue Detail (1681)
Department of Health and Social Services

Component: Public Assistance Field Services (236)

Revenue Type (OMB Fund Code) Revenue Source	Component	Comment	FY2020 Actuals	FY2021 Management Plan	FY2022 Governor
5002 Fed Rcpts (1002 Fed Rcpts)			27,848.3	33,598.4	28,493.6
5019 Federal - Miscellaneous Grants		Supplemental Nutrition Assistance Program-Federal restricted receipts are based on an approved cost allocation plan using staff time studies and document counts to allocate costs by federal program.	27,847.9	33,598.4	28,493.6
		Title IV A-Federal restricted receipts are based on an approved cost allocation plan using staff time studies and document counts to allocate costs by federal program.			
		Title XIX Map-Federal restricted receipts are based on an approved cost allocation plan using staff time studies and document counts to allocate costs by federal program.			
		Title XIX Map Admin-Federal restricted receipts are based on an approved cost allocation plan using staff time studies and document counts to allocate costs by federal program.			
5021 Federal - Other Prior Year Reimbursement Recovery			0.3	0.0	0.0
5022 Federal - Charges for Services Prior			0.1	0.0	0.0

Revenue Detail (1681)
Department of Health and Social Services

Component: Public Assistance Field Services (236)

Revenue Type (OMB Fund Code) Revenue Source	Component	Comment	FY2020 Actuals	FY2021 Management Plan	FY2022 Governor
Year Reimbrsmnt Recovry					
5007 I/A Rcpts (1007 I/A Rcpts)			2,056.7	2,307.9	2,320.1
5301 Inter-Agency Receipts	H&SS - Behavioral Health Administration (2665)	Reimbursable Services Agreement for Medicaid Eligibility Technician	50.0	50.0	50.0
5301 Inter-Agency Receipts	H&SS - PFD Hold Harmless (225)	Reimbursable Services Agreement between the Public Assistance Field Services component and the Permanent Fund Dividend (PFD) Hold Harmless component. The PFD Hold Harmless component provides the administrative funding for the public assistance maintenance work impacted by clients receiving the Alaska Permanent Fund Dividend.	2,006.7	2,257.9	2,270.1
5108 Stat Desig (1108 Stat Desig)			189.0	145.9	145.9
5204 Statutory Dsgntd Prgm Rcpts Hlth & Hmn Svcs - Chrgs for Svcs		State personnel outstationed for tribal Medicaid support at the Alaska Native Medical Center.	83.9	145.9	145.9
5206 Statutory Designated Program Receipts - Contracts			105.1	0.0	0.0
6003 G/F Match (1003 G/F Match)			0.6	16,701.9	17,193.9
6102 Match - Prior Year Reimbursement Recovery			0.6	0.0	0.0
6103 Match - Miscellaneous		general fund match authority	0.0	16,701.9	17,193.9

Inter-Agency Services (1682)
Department of Health and Social Services

Component: Public Assistance Field Services (236)

	FY2020 Actuals	FY2021 Management Plan	FY2022 Governor
Component Totals	9,504.2	10,017.9	9,309.6
With Department of Administration	5,899.6	6,118.0	5,556.5
With Department of Health and Social Services	3,061.8	3,530.2	3,204.4
With Department of Transportation/Public Facilities	39.8	53.0	40.2
With Department of Law	7.6	9.1	13.0
With Office of the Governor	65.2	0.0	65.2
With Department of Labor and Workforce Development	310.2	307.6	310.3
With Department of Revenue	120.0	0.0	120.0

Object Class	Servicing Agency	Explanation	FY2020 Actuals	FY2021 Management Plan	FY2022 Governor
3017 Inter-Agency Information Technology Non-Telecommunications	Admin - Department-wide	Reimbursable Services Agreement for Management Information Computer Systems, Reimbursable Services Agreement for Office of Information Technology Core Services, Reimbursable Services Agreement for Alaska's Resource for Integrated Eligibility Services Server Hosting, Microsoft License Chargeback	1,362.1	1,076.0	1,400.0
3017 Inter-Agency Information Technology Non-Telecommunications	H&SS - Information Technology Services (2754)	Reimbursable Services Agreement for Information Technology Customer Services and Network Services, Business Applications Support, Heating Assistance Program Operating System.	2,060.4	2,514.5	2,200.0
3017 Inter-Agency Information Technology Non-Telecommunications	H&SS - Public Assistance Field Svcs (236)	Alaska Ehealth Network charges	27.5	0.0	27.5
3018 Inter-Agency Information Technology Telecommunications	Admin - Department-wide	Telephone Services for field services offices. Reimbursable Services Agreement with Department of Administration,	1,547.3	1,681.5	1,550.0

Inter-Agency Services (1682)
Department of Health and Social Services

Component: Public Assistance Field Services (236)

Object Class		Servicing Agency	Explanation	FY2020 Actuals	FY2021 Management Plan	FY2022 Governor
			Enterprise Technology Services for Telecommunication.			
3019	Inter-Agency Storage	H&SS - Public Assistance Field Svcs (236)	Storage	8.2	8.5	8.2
3021	Inter-Agency Mail	Admin - Department-wide	Reimbursable Services Agreement for central mail services.	14.0	28.0	14.0
3022	Inter-Agency Human Resources	Admin - Department-wide	Reimbursable Services Agreement with Department of Administration for Human Resources.	309.4	335.5	309.4
3022	Inter-Agency Human Resources	H&SS - Public Assistance Field Svcs (236)		0.1	0.0	0.1
3023	Inter-Agency Building Leases	Admin - Department-wide	Building Leases	2,460.6	2,460.6	2,079.1
3023	Inter-Agency Building Leases	Trans - Department-wide	Leasing agreements in Kodiak and Sitka with the Department of Transportation	15.2	23.0	15.2
3024	Inter-Agency Legal	H&SS - Public Assistance Field Svcs (236)		0.1	0.0	0.0
3024	Inter-Agency Legal	Law - Department-wide	Reimbursable Services Agreement for regulation review and Health Insurance Portability and Accountability Act compliance.	7.6	9.1	13.0
3026	Inter-Agency Insurance	Admin - Department-wide	Reimbursable Services Agreement with the Department of Administration Risk Management for insurance.	27.6	30.0	28.0
3027	Inter-Agency Financial	Admin - Department-wide	Reimbursable Services Agreement for Integrated Resource Information System (IRIS) financial, IRIS payroll, and Alaska Data Enterprise Reporting.	111.2	123.2	111.2
3028	Inter-Agency Americans with Disabilities Act Compliance	Admin - Department-wide	Reimbursable Services Agreement for Americans with Disabilities Act compliance services.	3.4	3.7	3.5
3030	Inter-Agency Hearing/Mediation	Admin - Department-wide	Fair Hearing Services	2.7	0.0	0.0

Inter-Agency Services (1682)
Department of Health and Social Services

Component: Public Assistance Field Services (236)

Object Class	Servicing Agency	Explanation	FY2020 Actuals	FY2021 Management Plan	FY2022 Governor
3032 Inter-Agency Health	H&SS - Bureau of Vital Statistics (961)	Reimbursable Services Agreement with Division of Public Health's Bureau of Vital Statistics.	16.3	25.0	16.5
3037 State Equipment Fleet	Trans - Department-wide	Fuel and vehicle service charges	24.6	30.0	25.0
3038 Inter-Agency Management/Consulting	Admin - Department-wide	Reimbursable Services Agreement for SSOA Travel Initiative and AAPEX Chargeback.	61.3	379.5	61.3
3038 Inter-Agency Management/Consulting	Gov - Department-wide	Implementing administrative order 302 - Administrative Support Director to Office of Management and Budget, Office of Management and Budget budget analyst support	65.2	0.0	65.2
3038 Inter-Agency Management/Consulting	H&SS - Administrative Support Svcs (320)	Reimbursable Services Agreement for administrative and finance and management services.	181.4	200.0	181.4
3038 Inter-Agency Management/Consulting	H&SS - Commissioner's Office (317)	Reimbursable Services Agreement for Commissioner's Office Support	34.6	37.6	34.6
3038 Inter-Agency Management/Consulting	H&SS - Information Technology Services (2754)	Reimbursable Services Agreement for ARIES Support Services	497.1	500.0	500.0
3038 Inter-Agency Management/Consulting	H&SS - Public Affairs (2874)	Reimbursable Services Agreement for Public Affairs	54.7	86.6	54.7
3038 Inter-Agency Management/Consulting	H&SS - Senior/Disabilities Svcs Admin (2663)	Reimbursable Services Agreement for Tax Equity and Fiscal Responsibility Act (TEFRA).	181.4	158.0	181.4
3038 Inter-Agency Management/Consulting	Labor - Department-wide	Reimbursable Services Agreement with the Disability Determination Services (under Dept of Labor VOC Rehab) for the state only disability determinations for Medicaid applicants who need a disability decision as part of Medicaid eligibility. Reimbursable Services Agreement for Alaska Workforce Investment Board, Secure Access Management (SAM), Population Estimates Demographic Support.	310.2	307.6	310.3

Inter-Agency Services (1682)
Department of Health and Social Services

Component: Public Assistance Field Services (236)

Object Class	Servicing Agency	Explanation	FY2020 Actuals	FY2021 Management Plan	FY2022 Governor
3038 Inter-Agency Management/Consulting	Rev - Department-wide	Reimbursable Services Agreement for Weatherization Services	120.0	0.0	120.0

Personal Services Expenditure Detail
Department of Health and Social Services

Scenario: FY2022 Governor (17280)
Component: Public Assistance Field Services (236)
RDU: Public Assistance (73)

PCN	Job Class Title	Time Status	Retire Code	Barg Unit	Location	Salary Sched	Range / Step	Comp Months	Split / Count	Annual Salaries	COLA	Premium Pay	Annual Benefits	Total Costs	UGF Amount
02-7625	Training Specialist II	FT	A	GP	Anchorage	200	18C / D	12.0		65,076	885	0	42,257	108,218	56,273
05-2302	Public Assistance Analyst I	FT	A	GP	Anchorage	200	16D / E	12.0		58,666	798	0	39,945	99,409	51,693
05-2317	Public Assistance Analyst I	FT	A	GG	Anchorage	99	16O / P	12.0		78,375	1,066	0	47,052	126,493	65,776
05-8711	Emp Svc Tech II	FT	A	GP	Kenai	200	15D / E	12.0		55,439	754	0	38,782	94,975	0
06-1030	Public Assistance Analyst I	FT	A	GP	Anchorage	200	16L / M	12.0		71,113	968	0	44,434	116,515	60,588
06-2041	Office Assistant I	FT	A	GP	Anchorage	200	8C / D	12.0		33,423	455	0	30,843	64,721	33,655
06-3901	Eligibility Technician II	FT	A	GP	Juneau	205	14G / J	12.0		59,426	809	0	40,219	100,454	46,209
06-4938	Eligibility Technician II	FT	A	GP	Anchorage	200	14G / J	12.0		59,772	813	0	40,344	100,929	46,427
06-4939	Office Assistant I	FT	A	GP	Anchorage	200	8J	12.0		39,020	531	0	32,861	72,412	37,654
06-8003	Public Assistance Analyst II	FT	A	GP	Anchorage	200	18K	12.0		78,527	1,068	0	47,107	126,702	65,885
06-8024	Office Assistant I	FT	A	GP	Anchorage	200	8C / D	12.0		34,099	464	0	31,086	65,649	34,138
06-8025	Office Assistant I	FT	A	GP	Fairbanks	203	8C / D	12.0		34,296	467	0	31,157	65,920	34,278
06-8031	Eligibility Technician II	FT	A	GP	Bethel	250	14E / F	12.0		79,352	1,080	0	47,405	127,837	58,805
06-8032	Office Assistant IV	FT	A	SS	Ketchikan	600	12D / E	12.0		47,125	0	0	35,824	82,949	43,134
06-8033	Eligibility Technician II	FT	A	GP	Anchorage	200	14M	12.0		63,570	865	0	41,714	106,149	48,829
06-8034	Eligibility Technician II	FT	A	GP	Nome	237	14G / J	12.0		77,542	1,055	0	46,752	125,349	57,661
06-8035	Eligibility Technician II	FT	A	GP	Ketchikan	200	14C / D	12.0		49,156	669	0	36,516	86,341	39,717
06-8036	Eligibility Technician II	FT	A	GG	Fairbanks	203	14C / D	12.0		0	0	0	0	0	0
06-8037	Eligibility Office Manager II	FT	A	SS	Ketchikan	200	19D / E	12.0		76,447	0	0	46,397	122,844	63,879
06-8038	Eligibility Technician II	FT	A	GP	Kenai	200	14B / C	12.0		46,950	639	0	35,721	83,310	38,323
06-8039	Eligibility Office Manager II	FT	A	SS	Juneau	205	19D / E	12.0		80,479	0	0	47,851	128,330	66,732
06-8040	Eligibility Technician IV	FT	A	SS	Fairbanks	203	17C / D	12.0		65,866	0	0	42,582	108,448	49,886
06-8041	Public Asst P/O	FT	A	SS	Wasilla	200	21D / E	12.0		87,504	0	0	50,384	137,888	13,789
06-8042	Public Asst P/O	FT	A	SS	Fairbanks	203	21C / D	12.0		88,982	0	0	50,917	139,899	72,748
06-8043	Eligibility Technician IV	FT	A	SS	Anchorage	200	17D / E	12.0		67,205	0	0	43,064	110,269	50,724
06-8044	Eligibility Technician IV	FT	A	GP	Juneau	205	17C / D	12.0		62,892	856	0	41,469	105,217	48,400
06-8045	Eligibility Technician II	FT	A	GP	Fairbanks	203	14B / C	12.0		49,294	671	0	36,566	86,531	39,804
06-8046	Eligibility Technician II	FT	A	GP	Sitka	205	14B / C	12.0		50,603	689	0	37,038	88,330	40,632
06-8048	Public Assistance Analyst II	FT	A	GP	Anchorage	200	18L	12.0		81,081	1,103	0	48,028	130,212	67,710
06-8049	Office Assistant II	FT	A	GP	Sitka	205	10D / E	12.0		41,107	559	0	33,614	75,280	39,146
06-8050	Eligibility Office Manager II	FT	A	SS	Kenai	200	19C / D	12.0		75,670	0	0	46,117	121,787	63,329
06-8051	Eligibility Technician II	FT	A	GP	Fairbanks	203	14E / F	12.0		53,664	730	0	38,142	92,536	42,567
06-8054	Eligibility Technician II	FT	A	GP	Kenai	200	14B / C	12.0		47,340	644	0	35,861	83,845	38,569
06-8055	Eligibility Technician II	FT	A	GP	Fairbanks	203	14C / D	12.0		0	0	0	0	0	0
06-8057	Eligibility Technician III	FT	A	GP	Fairbanks	203	16G	12.0		65,793	895	0	42,515	109,203	50,233
06-8059	Eligibility Technician II	FT	A	GP	Anchorage	200	14C / D	12.0		0	0	0	0	0	0
06-8060	Eligibility Technician III	FT	A	GP	Anchorage	200	16D / E	12.0		59,017	803	0	40,072	99,892	45,950
06-8061	Eligibility Technician II	FT	A	GP	Anchorage	200	14C / D	12.0		0	0	0	0	0	0

Note: If a position is split, an asterisk (*) will appear in the Split/Count column. If the split position is also counted in the component, two asterisks (**) will appear in this column.
 [No valid job title] appearing in the Job Class Title indicates that the PCN has an invalid class code or invalid range for the class code effective date of this scenario.

Personal Services Expenditure Detail
Department of Health and Social Services

Scenario: FY2022 Governor (17280)
Component: Public Assistance Field Services (236)
RDU: Public Assistance (73)

PCN	Job Class Title	Time Status	Retire Code	Barg Unit	Location	Salary Sched	Range / Step	Comp Months	Split / Count	Annual Salaries	COLA	Premium Pay	Annual Benefits	Total Costs	UGF Amount
06-8062	Eligibility Technician III	FT	A	GP	Anchorage	99	16P / Q	12.0		83,207	1,132	0	48,795	133,134	61,242
06-8063	Eligibility Technician IV	FT	A	SS	Ketchikan	200	17D / E	12.0		68,215	0	0	43,429	111,644	51,356
06-8064	Public Assistance Analyst II	FT	A	GP	Anchorage	99	18N / O	12.0		88,433	1,203	0	50,679	140,315	72,964
06-8066	Administrative Assistant II	FT	A	GP	Wasilla	200	14B / C	12.0		46,690	635	0	35,627	82,952	43,135
06-8067	Office Assistant I	FT	A	GP	Fairbanks	203	8C / D	12.0		34,647	471	0	31,284	66,402	34,529
06-8068	Pb Asst Fsmii	FT	A	SS	Wasilla	99	21Q / R	12.0		119,829	0	0	62,041	181,870	94,572
06-8072	Eligibility Technician IV	FT	A	SS	Anchorage	200	17D / E	12.0		68,215	0	0	43,429	111,644	51,356
06-8073	Eligibility Technician III	FT	A	GP	Anchorage	200	16J / K	12.0		68,338	930	0	43,433	112,701	51,843
06-8077	Administrative Assistant II	FT	A	GP	Anchorage	200	14N	12.0		65,637	893	0	42,459	108,989	56,674
06-8078	Eligibility Technician II	FT	A	GP	Fairbanks	203	14L	12.0		63,414	863	0	41,657	105,934	48,730
06-8079	Eligibility Technician II	FT	A	GP	Bethel	250	14B / C	12.0		71,799	977	0	44,681	117,457	54,030
06-8081	Eligibility Office Manager II	FT	A	SS	Anchorage	200	19K	12.0		86,216	0	0	49,920	136,136	70,791
06-8084	Eligibility Technician III	FT	A	GG	Wasilla	200	16C / D	12.0		57,525	783	0	39,534	97,842	45,007
06-8085	Eligibility Technician II	FT	A	GP	Juneau	205	14C / D	12.0		51,929	707	0	37,516	90,152	41,470
06-8086	Office Assistant I	FT	A	GP	Juneau	205	8B / C	12.0		33,917	461	0	31,021	65,399	34,008
06-8087	Eligibility Technician II	FT	A	GP	Ketchikan	200	14G	12.0		55,439	754	0	38,782	94,975	43,689
06-8089	Eligibility Technician II	FT	A	GP	Fairbanks	203	14B / C	12.0		48,615	661	0	36,321	85,597	39,375
06-8090	Eligibility Technician II	FT	A	GP	Bethel	250	14C / D	12.0		73,408	999	0	45,261	119,668	55,047
06-8091	Eligibility Technician II	FT	A	GP	Anchorage	200	14G / J	12.0		56,115	764	0	39,025	95,904	44,116
06-8098	Eligibility Technician IV	FT	A	SS	Wasilla	200	17D / E	12.0		67,664	0	0	43,230	110,894	51,011
06-8099	Eligibility Technician III	FT	A	GP	Anchorage	200	16E / F	12.0		60,251	820	0	40,517	101,588	46,731
06-8100	Eligibility Technician II	FT	A	GP	Wasilla	200	14C / D	12.0		48,708	663	0	36,354	85,725	39,434
06-8101	Eligibility Technician II	FT	A	GP	Anchorage	200	14D / E	12.0		50,203	683	0	36,894	87,780	40,379
06-8102	Eligibility Technician II	FT	A	GP	Anchorage	200	14C / D	12.0		0	0	0	0	0	0
06-8103	Eligibility Technician II	FT	A	GP	Wasilla	200	14C / D	12.0		0	0	0	0	0	0
06-8105	Public Assistance Analyst I	FT	A	GP	Anchorage	200	16K / K	12.0		68,699	935	0	43,563	113,197	58,862
06-8106	Eligibility Technician III	FT	A	GP	Wasilla	200	16J / K	12.0		68,518	932	0	43,498	112,948	51,956
06-8107	Office Assistant II	FT	A	GP	Anchorage	200	10E / F	12.0		40,872	556	0	33,529	74,957	38,978
06-8109	Office Assistant II	FT	A	GP	Wasilla	200	10D / E	12.0		39,286	535	0	32,957	72,778	37,845
06-8110	Office Assistant I	FT	A	GP	Anchorage	200	8D / E	12.0		34,479	469	0	31,223	66,171	34,409
06-8111	Eligibility Technician III	FT	A	GP	Anchorage	200	16C / D	12.0		56,830	773	0	39,283	96,886	44,568
06-8112	Office Assistant I	FT	A	GP	Anchorage	200	8C / D	12.0		33,381	454	0	30,828	64,663	33,625
06-8113	Office Assistant II	FT	A	GP	Anchorage	200	10D / E	12.0		38,862	529	0	32,804	72,195	37,541
06-8114	Eligibility Technician III	FT	A	GP	Ketchikan	200	16C / D	12.0		55,786	759	0	38,907	95,452	43,908
06-8115	Eligibility Technician III	FT	A	GP	Juneau	205	16G / J	12.0		67,545	919	0	43,147	111,611	51,341
06-8116	Eligibility Technician II	FT	A	GP	Anchorage	200	14B / C	12.0		46,690	635	0	35,627	82,952	38,158
06-8117	Eligibility Technician III	FT	A	GP	Anchorage	200	16B / C	12.0		55,005	748	0	38,625	94,378	43,414
06-8118	Eligibility Technician III	FT	A	GP	Fairbanks	203	16G	12.0		65,793	895	0	42,515	109,203	50,233

Note: If a position is split, an asterisk (*) will appear in the Split/Count column. If the split position is also counted in the component, two asterisks (**) will appear in this column. [No valid job title] appearing in the Job Class Title indicates that the PCN has an invalid class code or invalid range for the class code effective date of this scenario.

Personal Services Expenditure Detail
Department of Health and Social Services

Scenario: FY2022 Governor (17280)
Component: Public Assistance Field Services (236)
RDU: Public Assistance (73)

PCN	Job Class Title	Time Status	Retire Code	Barg Unit	Location	Salary Sched	Range / Step	Comp Months	Split / Count	Annual Salaries	COLA	Premium Pay	Annual Benefits	Total Costs	UGF Amount
06-8119	Eligibility Technician III	FT	A	GP	Juneau	205	16C / D	12.0		60,044	817	0	40,442	101,303	46,599
06-8120	Eligibility Technician III	FT	A	GP	Bethel	250	16N / O	12.0		116,944	1,591	0	60,960	179,495	82,568
06-8121	Chf Pub Asst Fo	FT	A	SS	Anchorage	200	22K	12.0		105,227	0	0	56,775	162,002	84,241
06-8124	Public Asst P/O	FT	A	SS	Anchorage	200	21J	12.0		95,264	0	0	53,182	148,446	77,192
06-8128	Office Assistant I	FT	A	GP	Anchorage	200	8D / E	12.0		34,353	467	0	31,178	65,998	34,319
06-8139	Eligibility Technician II	FT	A	GP	Wasilla	200	14K / L	12.0		60,114	818	0	40,467	101,399	46,644
06-8140	Eligibility Technician II	FT	A	GP	Juneau	205	14A / B	12.0		47,413	645	0	35,887	83,945	38,615
06-8141	Eligibility Technician II	FT	A	GP	Anchorage	200	14B / C	12.0		47,665	649	0	35,978	84,292	38,774
06-8143	Office Assistant I	FT	A	GP	Wasilla	200	8C / D	12.0		33,541	456	0	30,885	64,882	33,739
06-8145	Eligibility Technician II	FT	A	GP	Kodiak	211	14G / J	12.0		61,971	843	0	41,137	103,951	47,818
06-8150	Public Assistance Analyst I	FT	A	GP	Fairbanks	203	16C / D	12.0		59,261	806	0	40,160	100,227	100,227
06-8159	Administrative Assistant II	FT	A	GP	Anchorage	200	14F / G	12.0		54,788	745	0	38,547	94,080	48,922
06-8161	Office Assistant IV	FT	A	SS	Bethel	99	12N / O	12.0		89,066	0	0	50,947	140,013	72,807
06-8162	Public Assistance Analyst I	FT	A	GP	Fairbanks	203	16C / D	12.0		58,178	792	0	39,769	98,739	98,739
06-8165	Training Specialist III	FT	A	SS	Anchorage	200	20E / F	12.0		84,337	0	0	49,242	133,579	69,461
06-8168	Eligibility Technician III	FT	A	GP	Ketchikan	200	16K / L	12.0		69,162	941	0	43,730	113,833	52,363
06-8169	Eligibility Office Manager II	FT	A	SS	Anchorage	200	19E / F	12.0		80,530	0	0	47,869	128,399	66,768
06-8171	Eligibility Technician III	FT	A	GP	Wasilla	200	16C	12.0		55,439	754	0	38,782	94,975	43,689
06-8172	Eligibility Technician IV	FT	A	SS	Wasilla	200	17C / D	12.0		64,137	0	0	41,958	106,095	48,804
06-8173	Eligibility Technician III	FT	A	GP	Anchorage	200	16D / E	12.0		57,964	789	0	39,692	98,445	45,285
06-8174	Eligibility Technician II	FT	A	GP	Anchorage	200	14B / C	12.0		47,340	644	0	35,861	83,845	38,569
06-8175	Eligibility Technician II	FT	A	GP	Wasilla	200	14D / E	12.0		50,502	687	0	37,001	88,190	40,567
06-8176	Eligibility Technician II	FT	A	GP	Anchorage	200	14A / B	12.0		46,304	630	0	35,488	82,422	37,914
06-8177	Eligibility Technician II	FT	A	GP	Anchorage	200	14K	12.0		59,631	811	0	40,293	100,735	46,338
06-8179	Eligibility Technician III	FT	A	GP	Fairbanks	203	16K	12.0		70,766	963	0	44,309	116,038	53,378
06-8180	Eligibility Technician IV	FT	A	SS	Wasilla	200	17C / D	12.0		64,043	0	0	41,924	105,967	48,745
06-8181	Eligibility Technician III	FT	A	GP	Kenai	200	16L	12.0		70,922	965	0	44,365	116,252	53,476
06-8182	Eligibility Technician II	FT	A	GP	Fairbanks	203	14C / D	12.0		51,326	698	0	37,298	89,322	41,088
06-8183	Eligibility Technician II	FT	A	GP	Juneau	205	14D / E	12.0		52,632	716	0	37,769	91,117	41,914
06-8184	Eligibility Technician III	FT	A	GP	Anchorage	99	16Q / R	12.0		85,917	1,169	0	49,772	136,858	62,955
06-8185	Pb Asst Fsmii	FT	A	SS	Ketchikan	200	21E / F	12.0		90,388	0	0	51,424	141,812	73,742
06-8200	Eligibility Technician II	FT	A	GP	Anchorage	200	14C / D	12.0		0	0	0	0	0	0
06-8201	Eligibility Technician IV	FT	A	SS	Wasilla	200	17J	12.0		73,008	0	0	45,157	118,165	54,356
06-8202	Eligibility Technician II	FT	A	GP	Anchorage	200	14G / J	12.0		55,825	760	0	38,921	95,506	43,933
06-8203	Eligibility Technician II	FT	A	GP	Fairbanks	203	14B / C	12.0		49,628	675	0	36,686	86,989	40,015
06-8204	Eligibility Technician II	FT	A	GP	Kenai	200	14G / J	12.0		57,179	778	0	39,409	97,366	44,788
06-8205	Eligibility Technician II	FT	A	GP	Fairbanks	203	14C / D	12.0		51,248	697	0	37,270	89,215	89,215
06-8207	Office Assistant IV	FT	A	SS	Kenai	600	12C / D	12.0		45,742	0	0	35,325	81,067	42,155

Note: If a position is split, an asterisk (*) will appear in the Split/Count column. If the split position is also counted in the component, two asterisks (**) will appear in this column. [No valid job title] appearing in the Job Class Title indicates that the PCN has an invalid class code or invalid range for the class code effective date of this scenario.

Personal Services Expenditure Detail
Department of Health and Social Services

Scenario: FY2022 Governor (17280)
Component: Public Assistance Field Services (236)
RDU: Public Assistance (73)

PCN	Job Class Title	Time Status	Retire Code	Barg Unit	Location	Salary Sched	Range / Step	Comp Months	Split / Count	Annual Salaries	COLA	Premium Pay	Annual Benefits	Total Costs	UGF Amount
06-8208	Office Assistant IV	FT	A	SS	Fairbanks	603	12D / E	12.0		49,275	0	0	36,599	85,874	44,655
06-8210	Eligibility Technician IV	FT	A	GP	Juneau	205	17B / C	12.0		60,576	824	0	40,634	102,034	46,936
06-8212	Eligibility Technician II	FT	A	GP	Juneau	205	14J / K	12.0		61,630	839	0	41,014	103,483	47,602
06-8217	Eligibility Technician II	FT	A	GP	Juneau	205	14B / C	12.0		49,852	678	0	36,767	87,297	87,297
06-8219	Eligibility Technician II	FT	A	GP	Juneau	205	14A / B	12.0		48,695	663	0	36,350	85,708	85,708
06-8220	Eligibility Technician II	FT	A	GP	Juneau	205	14A / B	12.0		47,886	652	0	36,058	84,596	30,455
06-8225	Eligibility Technician II	FT	A	GP	Wasilla	200	14G / J	12.0		55,632	757	0	38,851	95,240	43,810
06-8226	Eligibility Technician II	FT	A	GP	Anchorage	200	14L	12.0		61,562	838	0	40,990	103,390	47,559
06-8227	Eligibility Technician II	FT	A	GP	Kenai	200	14A / B	12.0		46,625	634	0	35,603	82,862	38,117
06-8228	Eligibility Technician II	FT	A	GP	Wasilla	200	14D / E	12.0		50,053	681	0	36,839	87,573	87,573
06-8229	Eligibility Technician II	FT	A	GP	Anchorage	200	14D / E	12.0		51,025	694	0	37,190	88,909	40,898
06-8230	Eligibility Technician II	FT	A	GP	Nome	237	14C / D	12.0		0	0	0	0	0	0
06-8231	Eligibility Technician II	FT	A	GP	Wasilla	200	14C / D	12.0		0	0	0	0	0	0
06-8235	Eligibility Office Manager II	FT	A	SS	Fairbanks	203	19E / F	12.0		81,094	0	0	48,073	129,167	67,167
06-8236	Eligibility Technician II	FT	A	GP	Fairbanks	203	14C / D	12.0		0	0	0	0	0	0
06-8237	Office Assistant I	FT	A	GP	Wasilla	200	8C / D	12.0		33,541	456	0	30,885	64,882	33,739
06-8238	Office Assistant I	FT	A	GP	Wasilla	200	8G	12.0		37,460	510	0	32,298	70,268	36,539
06-8239	Eligibility Technician II	FT	A	GP	Anchorage	200	14C / D	12.0		49,381	672	0	36,597	86,650	39,859
06-8242	Eligibility Technician II	FT	A	GP	Anchorage	200	14G	12.0		55,439	754	0	38,782	94,975	43,689
06-8243	Office Assistant II	FT	A	GP	Juneau	205	10B / C	12.0		38,366	522	0	32,625	71,513	37,187
06-8244	Eligibility Technician II	FT	A	GP	Anchorage	200	14C / D	12.0		49,904	679	0	36,786	87,369	87,369
06-8245	Eligibility Technician II	FT	A	GP	Anchorage	200	14C / D	12.0		0	0	0	0	0	0
06-8247	Office Assistant IV	FT	A	SS	Anchorage	600	12C / D	12.0		45,503	0	0	35,239	80,742	41,986
06-8248	Office Assistant I	FT	A	GP	Anchorage	200	8L	12.0		41,594	566	0	33,789	75,949	39,494
06-8251	Eligibility Technician II	FT	A	GP	Wasilla	200	14C / D	12.0		48,558	661	0	36,300	85,519	39,339
06-8252	Eligibility Technician II	FT	A	GP	Ketchikan	200	14E / F	12.0		52,014	708	0	37,547	90,269	41,524
06-8253	Eligibility Technician II	FT	A	GP	Anchorage	200	14C / D	12.0		48,259	657	0	36,193	85,109	39,150
06-8257	Eligibility Technician II	FT	A	GP	Anchorage	200	14C / D	12.0		48,259	657	0	36,193	85,109	39,150
06-8258	Eligibility Technician II	FT	A	GP	Anchorage	200	14C / D	12.0		0	0	0	0	0	0
06-8259	Eligibility Technician II	FT	A	GP	Anchorage	200	14F / G	12.0		53,775	732	0	38,182	92,689	42,637
06-8260	Eligibility Technician II	FT	A	GP	Fairbanks	203	14C / D	12.0		50,785	691	0	37,103	88,579	88,579
06-8261	Eligibility Technician II	FT	A	GP	Fairbanks	203	14C / D	12.0		0	0	0	0	0	0
06-8264	Office Assistant I	FT	A	GP	Anchorage	200	8C / D	12.0		33,212	452	0	30,767	64,431	33,504
06-8265	Office Assistant IV	FT	A	SS	Anchorage	600	12C / D	12.0		45,981	0	0	35,411	81,392	42,324
06-8266	Office Assistant I	FT	A	GP	Anchorage	200	8C / D	12.0		33,381	454	0	30,828	64,663	64,663
06-8267	Office Assistant II	FT	A	GP	Anchorage	200	10C / D	12.0		37,504	510	0	32,314	70,328	70,328
06-8268	Office Assistant I	FT	A	GP	Anchorage	200	8D / E	12.0		34,226	466	0	31,132	65,824	34,229
06-8269	Eligibility Technician IV	FT	A	SS	Anchorage	200	17D / E	12.0		68,032	0	0	43,363	111,395	51,242

Note: If a position is split, an asterisk (*) will appear in the Split/Count column. If the split position is also counted in the component, two asterisks (**) will appear in this column. [No valid job title] appearing in the Job Class Title indicates that the PCN has an invalid class code or invalid range for the class code effective date of this scenario.

Personal Services Expenditure Detail
Department of Health and Social Services

Scenario: FY2022 Governor (17280)
Component: Public Assistance Field Services (236)
RDU: Public Assistance (73)

PCN	Job Class Title	Time Status	Retire Code	Barg Unit	Location	Salary Sched	Range / Step	Comp Months	Split / Count	Annual Salaries	COLA	Premium Pay	Annual Benefits	Total Costs	UGF Amount
06-8271	Office Assistant I	FT	A	GP	Anchorage	200	8D / E	12.0		34,944	475	0	31,391	66,810	34,741
06-8272	Administrative Assistant II	FT	A	GP	Anchorage	200	14B / C	12.0		48,120	655	0	36,142	84,917	44,157
06-8273	Office Assistant I	FT	A	GP	Anchorage	200	8D / E	12.0		34,353	467	0	31,178	65,998	34,319
06-8274	Office Assistant I	FT	A	GP	Ketchikan	200	8D / E	12.0		34,902	475	0	31,376	66,753	34,712
06-8275	Administrative Assistant II	FT	A	GP	Fairbanks	203	14G / J	12.0		57,296	780	0	39,451	97,527	50,714
06-8276	Office Assistant II	FT	A	GP	Fairbanks	203	10F / G	12.0		42,452	578	0	34,099	77,129	77,129
06-8277	Office Assistant II	FT	A	GP	Anchorage	200	10G / J	12.0		42,383	577	0	34,074	77,034	40,058
06-8278	Eligibility Technician II	FT	A	GP	Anchorage	200	14B / C	12.0		47,600	648	0	35,955	84,203	38,733
06-8279	Office Assistant I	FT	A	GP	Fairbanks	203	8C / D	12.0		34,471	469	0	31,221	66,161	34,404
06-8280	Office Assistant II	FT	A	GP	Nome	237	10E / F	12.0		54,554	742	0	38,463	93,759	48,755
06-8281	Office Assistant I	FT	A	GP	Fairbanks	203	8C / D	12.0		0	0	0	0	0	0
06-8282	Office Assistant I	FT	A	GP	Anchorage	200	8C / D	12.0		34,015	463	0	31,056	65,534	34,078
06-8284	Eligibility Technician II	FT	A	GP	Wasilla	200	14E / F	12.0		52,416	713	0	37,692	90,821	41,778
06-8285	Eligibility Technician II	FT	A	GP	Kenai	200	14J	12.0		57,759	786	0	39,618	98,163	45,155
06-8286	Eligibility Technician II	FT	A	GP	Kenai	200	14L	12.0		61,562	838	0	40,990	103,390	47,559
06-8287	Eligibility Technician II	FT	A	GP	Kenai	200	14K / L	12.0		59,792	814	0	40,351	100,957	46,440
06-8288	Office Assistant I	FT	A	GP	Anchorage	200	8C / D	12.0		0	0	0	0	0	0
06-8289	Office Assistant I	FT	A	GP	Kenai	200	8B / C	12.0		32,696	445	0	30,580	63,721	33,135
06-8290	Eligibility Technician II	FT	A	GP	Juneau	205	14A / B	12.0		47,939	652	0	36,077	84,668	30,481
06-8291	Eligibility Technician II	FT	A	GP	Juneau	205	14C / D	12.0		0	0	0	0	0	0
06-8292	Eligibility Technician II	FT	A	GP	Juneau	205	14A / B	12.0		47,751	650	0	36,009	84,410	30,388
06-8293	Eligibility Technician II	FT	A	GP	Juneau	205	14G / J	12.0		60,543	824	0	40,622	101,989	36,716
06-8294	Office Assistant II	FT	A	GP	Juneau	205	10B / C	12.0		39,278	534	0	32,954	72,766	37,838
06-8295	Eligibility Technician II	FT	A	GP	Anchorage	200	14M	12.0		63,570	865	0	41,714	106,149	48,829
06-8299	Eligibility Technician II	FT	A	GP	Anchorage	200	14B / C	12.0		47,925	652	0	36,072	84,649	38,939
06-8300	Eligibility Technician II	FT	A	GP	Anchorage	200	14B / C	12.0		46,820	637	0	35,674	83,131	38,240
06-8301	Eligibility Technician II	FT	A	GP	Anchorage	200	14C / D	12.0		48,708	663	0	36,354	85,725	39,434
06-8302	Eligibility Technician II	FT	A	GP	Anchorage	200	14C / D	12.0		0	0	0	0	0	0
06-8303	Eligibility Office Manager I	FT	A	SS	Bethel	250	18O	12.0		137,509	0	0	68,416	205,925	107,081
06-8304	Eligibility Technician IV	FT	A	SS	Anchorage	200	17Q / R	12.0		97,763	0	0	54,084	151,847	69,850
06-8305	Eligibility Technician II	FT	A	GP	Anchorage	200	14J / K	12.0		57,993	789	0	39,703	98,485	45,303
06-8307	Eligibility Technician II	FT	A	GP	Anchorage	200	14J / K	12.0		59,085	804	0	40,096	99,985	45,993
06-8308	Training Specialist II	FT	A	GP	Anchorage	200	18E / F	12.0		68,481	932	0	43,485	112,898	58,707
06-8309	Training Specialist II	FT	A	GP	Anchorage	200	18J / K	12.0		76,772	1,045	0	46,474	124,291	64,631
06-8310	Eligibility Technician II	FT	A	GP	Anchorage	200	14C / D	12.0		48,259	657	0	36,193	85,109	85,109
06-8311	Eligibility Technician II	FT	A	GP	Anchorage	200	14C / D	12.0		49,605	675	0	36,678	86,958	40,001
06-8313	Eligibility Technician II	FT	A	GP	Wasilla	200	14C / D	12.0		0	0	0	0	0	0
06-8315	Eligibility Technician IV	FT	A	SS	Fairbanks	203	17N / O	12.0		88,774	0	0	50,842	139,616	64,223

Note: If a position is split, an asterisk (*) will appear in the Split/Count column. If the split position is also counted in the component, two asterisks (**) will appear in this column. [No valid job title] appearing in the Job Class Title indicates that the PCN has an invalid class code or invalid range for the class code effective date of this scenario.

Personal Services Expenditure Detail
Department of Health and Social Services

Scenario: FY2022 Governor (17280)
Component: Public Assistance Field Services (236)
RDU: Public Assistance (73)

PCN	Job Class Title	Time Status	Retire Code	Barg Unit	Location	Salary Sched	Range / Step	Comp Months	Split / Count	Annual Salaries	COLA	Premium Pay	Annual Benefits	Total Costs	UGF Amount
06-8316	Eligibility Technician III	FT	A	GP	Anchorage	200	16C / D	12.0		55,526	755	0	38,813	95,094	43,743
06-8317	Eligibility Technician III	FT	A	GG	Bethel	250	16P	12.0		120,900	1,645	0	62,387	184,932	85,069
06-8318	Eligibility Technician II	FT	A	GP	Fairbanks	203	14C / D	12.0		51,017	694	0	37,187	88,898	88,898
06-8319	Eligibility Technician III	FT	A	GP	Anchorage	99	16M / N	12.0		74,908	1,019	0	45,802	121,729	55,995
06-8320	Eligibility Technician II	FT	A	GP	Kenai	200	14G	12.0		55,439	754	0	38,782	94,975	43,689
06-8321	Eligibility Technician II	FT	A	GP	Kenai	200	14G	12.0		55,439	754	0	38,782	94,975	43,689
06-8322	Eligibility Technician II	FT	A	GP	Wasilla	200	14J / K	12.0		59,475	809	0	40,237	100,521	46,240
06-8323	Eligibility Technician II	FT	A	GP	Bethel	250	14J	12.0		86,639	1,179	0	50,032	137,850	63,411
06-8324	Eligibility Technician III	FT	A	GP	Ketchikan	200	16E / F	12.0		59,897	815	0	40,389	101,101	46,507
06-8325	Eligibility Technician II	FT	A	GP	Ketchikan	200	14J	12.0		57,759	786	0	39,618	98,163	45,155
06-8326	Eligibility Technician II	FT	A	GP	Ketchikan	200	14K / L	12.0		60,677	826	0	40,670	102,173	47,000
06-8328	Eligibility Technician II	FT	A	GP	Anchorage	200	14B / C	12.0		46,690	635	0	35,627	82,952	38,158
06-8329	Public Assistance Analyst II	FT	A	GP	Anchorage	200	18G / J	12.0		74,298	1,011	0	45,582	120,891	62,863
06-8330	Office Assistant II	FT	A	GP	Ketchikan	200	10D / E	12.0		39,003	531	0	32,855	72,389	37,642
06-8331	Eligibility Technician IV	FT	A	SS	Kenai	200	17J	12.0		73,008	0	0	45,157	118,165	61,446
06-8332	Office Assistant IV	FT	A	SS	Juneau	605	12C / D	12.0		47,471	0	0	35,948	83,419	43,378
06-8333	Eligibility Technician II	FT	A	GP	Anchorage	200	14D / E	12.0		50,128	682	0	36,866	87,676	40,331
06-8334	Office Assistant II	FT	A	GP	Homer	200	10D / E	12.0		39,050	531	0	32,872	72,453	37,676
06-8335	Office Assistant I	FT	A	GG	Fairbanks	99	8P / Q	12.0		49,152	669	0	36,515	86,336	44,895
06-8336	Office Assistant I	FT	A	GP	Anchorage	200	8C / D	12.0		34,057	463	0	31,071	65,591	65,591
06-8337	Office Assistant I	FT	A	GP	Ketchikan	200	8C / D	12.0		34,099	464	0	31,086	65,649	34,138
06-8338	Office Assistant I	FT	A	GP	Juneau	205	8C / D	12.0		35,185	479	0	31,478	67,142	34,914
06-8339	Office Assistant III	FT	A	GP	Anchorage	200	11K	12.0		48,477	660	0	36,271	85,408	44,412
06-8341	Office Assistant II	FT	A	GP	Wasilla	200	10C / D	12.0		37,728	513	0	32,395	70,636	36,731
06-8342	Office Assistant I	FT	A	GP	Wasilla	200	8B / C	12.0		32,610	444	0	30,549	63,603	33,074
06-8347	Eligibility Technician II	FT	A	GP	Ketchikan	200	14B / C	12.0		47,730	649	0	36,002	84,381	38,815
06-8348	Eligibility Technician II	FT	A	GG	Anchorage	99	14N / O	12.0		67,763	922	0	43,226	111,911	111,911
06-8366	Office Assistant IV	FT	A	SS	Wasilla	600	12C / D	12.0		45,503	0	0	35,239	80,742	41,986
06-8368	Eligibility Technician IV	FT	A	SS	Anchorage	200	17D / E	12.0		66,194	0	0	42,700	108,894	50,091
06-8369	Office Assistant II	FT	A	GP	Bethel	250	10K	12.0		68,133	927	0	43,359	112,419	58,458
06-8375	Eligibility Technician II	FT	A	GP	Wasilla	200	14B / C	12.0		46,755	636	0	35,650	83,041	38,199
06-8376	Office Assistant I	FT	A	GP	Anchorage	200	8C / D	12.0		0	0	0	0	0	0
06-8377	Eligibility Technician II	FT	A	GP	Wasilla	200	14B / C	12.0		47,145	641	0	35,791	83,577	38,445
06-8378	Eligibility Technician III	FT	A	GG	Wasilla	99	16O / P	12.0		80,594	1,097	0	47,853	129,544	59,590
06-8380	Eligibility Technician II	FT	A	GP	Juneau	205	14E / F	12.0		55,296	752	0	38,730	94,778	43,598
06-8383	Eligibility Technician II	FT	A	GP	Kenai	200	14C / D	12.0		49,530	674	0	36,651	86,855	39,953
06-8384	Eligibility Office Manager II	FT	A	SS	Wasilla	200	19D / E	12.0		76,156	0	0	46,292	122,448	63,673
06-8385	Eligibility Technician III	FT	A	GG	Anchorage	200	16N	12.0		75,602	1,029	0	46,052	122,683	56,434

Note: If a position is split, an asterisk (*) will appear in the Split/Count column. If the split position is also counted in the component, two asterisks (**) will appear in this column. [No valid job title] appearing in the Job Class Title indicates that the PCN has an invalid class code or invalid range for the class code effective date of this scenario.

Personal Services Expenditure Detail
Department of Health and Social Services

Scenario: FY2022 Governor (17280)
Component: Public Assistance Field Services (236)
RDU: Public Assistance (73)

PCN	Job Class Title	Time Status	Retire Code	Barg Unit	Location	Salary Sched	Range / Step	Comp Months	Split / Count	Annual Salaries	COLA	Premium Pay	Annual Benefits	Total Costs	UGF Amount
06-8387	Emp Svc Tech II	FT	A	GG	Fairbanks	203	15P	12.0		77,474	1,054	0	46,727	125,255	0
06-8390	Office Assistant II	FT	A	GP	Anchorage	200	10C / D	12.0		38,264	521	0	32,588	71,373	37,114
06-8391	Eligibility Technician II	FT	A	GP	Nome	237	14C / D	12.0		66,417	904	0	42,740	110,061	110,061
06-8392	Eligibility Technician II	FT	A	GP	Anchorage	200	14C / D	12.0		48,633	662	0	36,327	85,622	39,386
06-8399	Public Assistance Analyst I	FT	A	GP	Anchorage	200	16E / F	12.0		61,757	840	0	41,060	103,657	53,902
06-8403	Office Assistant II	FT	A	GP	Kodiak	211	10C / D	12.0		42,317	576	0	34,050	76,943	40,010
06-8404	Eligibility Technician II	FT	A	GP	Juneau	205	14E / F	12.0		54,535	742	0	38,456	93,733	43,117
06-8405	Eligibility Technician II	FT	A	GP	Anchorage	200	14C / D	12.0		0	0	0	0	0	0
06-8408	Eligibility Technician II	FT	A	GP	Fairbanks	203	14C / D	12.0		0	0	0	0	0	0
06-8409	Eligibility Technician II	FT	A	GP	Anchorage	200	14F / G	12.0		54,065	736	0	38,286	93,087	42,820
06-8414	Public Assistance Analyst I	FT	A	GP	Anchorage	200	16J	12.0		66,534	905	0	42,782	110,221	57,315
06-8416	Eligibility Technician II	FT	A	GP	Anchorage	200	14D / E	12.0		50,502	687	0	37,001	88,190	40,567
06-8417	Eligibility Technician III	FT	A	GP	Kenai	200	16F / G	12.0		62,731	854	0	41,411	104,996	48,298
06-8418	Eligibility Technician II	FT	A	GP	Anchorage	200	14D / E	12.0		50,278	684	0	36,921	87,883	40,426
06-8419	Eligibility Technician III	FT	A	GP	Anchorage	200	16J	12.0		66,534	905	0	42,782	110,221	50,702
06-8420	Eligibility Technician II	FT	A	GP	Fairbanks	203	14C / D	12.0		0	0	0	0	0	0
06-8421	Eligibility Technician II	FT	A	GP	Bethel	250	14B / C	12.0		71,702	976	0	44,646	117,324	53,969
06-8422	Training Specialist II	FT	A	GP	Anchorage	200	18G	12.0		73,047	994	0	45,131	119,172	61,969
06-8423	Eligibility Technician II	FT	A	GP	Wasilla	200	14C / D	12.0		0	0	0	0	0	0
06-8424	Eligibility Technician II	FT	A	GP	Wasilla	200	14G	12.0		55,439	754	0	38,782	94,975	43,689
06-8425	Eligibility Technician II	FT	A	GP	Anchorage	200	14C / D	12.0		0	0	0	0	0	0
06-8430	Office Assistant I	FT	A	GP	Wasilla	200	8C / D	12.0		33,254	452	0	30,782	64,488	33,534
06-8431	Eligibility Technician IV	FT	A	SS	Anchorage	200	17C / D	12.0		64,511	0	0	42,093	106,604	49,038
06-8432	Eligibility Technician III	FT	A	GP	Anchorage	200	16J	12.0		66,534	905	0	42,782	110,221	50,702
06-8433	Eligibility Technician III	FT	A	GP	Anchorage	200	16G	12.0		63,882	869	0	41,826	106,577	49,025
06-8434	Eligibility Technician II	FT	A	GP	Fairbanks	203	14G / J	12.0		58,695	799	0	39,956	99,450	45,747
06-8435	Eligibility Technician II	FT	A	GP	Anchorage	200	14G / J	12.0		56,019	762	0	38,991	95,772	44,055
06-8436	Eligibility Technician II	FT	A	GP	Wasilla	200	14B / C	12.0		47,340	644	0	35,861	83,845	38,569
06-8437	Eligibility Technician II	FT	A	GP	Anchorage	200	14C / D	12.0		49,605	675	0	36,678	86,958	86,958
06-8438	Eligibility Technician II	FT	A	GP	Wasilla	200	14G	12.0		55,439	754	0	38,782	94,975	43,689
06-8439	Eligibility Technician II	FT	A	GP	Anchorage	200	14C / D	12.0		0	0	0	0	0	0
06-8440	Eligibility Technician II	FT	A	GP	Anchorage	200	14C / D	12.0		0	0	0	0	0	0
06-8441	Eligibility Technician II	FT	A	GP	Fairbanks	203	14D / E	12.0		52,406	713	0	37,688	90,807	41,771
06-8442	Eligibility Technician IV	FT	A	SS	Fairbanks	203	17J / K	12.0		75,720	0	0	46,135	121,855	56,053
06-8443	Eligibility Technician II	FT	A	GP	Fairbanks	203	14C / D	12.0		50,013	680	0	36,825	87,518	87,518
06-8444	Eligibility Technician II	FT	A	GP	Fairbanks	203	14B / C	12.0		48,695	663	0	36,350	85,708	39,426
06-8445	Eligibility Technician II	FT	A	GP	Fairbanks	203	14C / D	12.0		50,708	690	0	37,076	88,474	40,698
06-8446	Eligibility Technician II	FT	A	GP	Fairbanks	203	14D / E	12.0		52,406	713	0	37,688	90,807	41,771

Note: If a position is split, an asterisk (*) will appear in the Split/Count column. If the split position is also counted in the component, two asterisks (**) will appear in this column. [No valid job title] appearing in the Job Class Title indicates that the PCN has an invalid class code or invalid range for the class code effective date of this scenario.

Personal Services Expenditure Detail
Department of Health and Social Services

Scenario: FY2022 Governor (17280)
Component: Public Assistance Field Services (236)
RDU: Public Assistance (73)

PCN	Job Class Title	Time Status	Retire Code	Barg Unit	Location	Salary Sched	Range / Step	Comp Months	Split / Count	Annual Salaries	COLA	Premium Pay	Annual Benefits	Total Costs	UGF Amount
06-8449	Eligibility Technician II	FT	A	GP	Nome	237	14G	12.0		75,953	1,033	0	46,179	123,165	56,656
06-8451	Eligibility Technician II	FT	A	GP	Bethel	250	14B / C	12.0		71,409	972	0	44,540	116,921	53,784
06-8453	Eligibility Technician II	FT	A	GP	Kenai	200	14G	12.0		55,439	754	0	38,782	94,975	43,689
06-8454	Office Assistant I	FT	A	GP	Wasilla	200	8G / J	12.0		38,175	519	0	32,556	71,250	37,050
06-8455	Eligibility Technician II	FT	A	GP	Juneau	205	14A / B	12.0		47,751	650	0	36,009	84,410	30,388
06-8456	Eligibility Technician II	FT	A	GP	Juneau	205	14J	12.0		60,645	825	0	40,659	102,129	46,979
06-8457	Eligibility Technician II	FT	A	GP	Wasilla	200	14E / F	12.0		53,542	729	0	38,098	92,369	42,490
06-8458	Administrative Assistant II	FT	A	GP	Wasilla	200	14B / C	12.0		47,405	645	0	35,885	83,935	43,646
06-8459	Office Assistant I	FT	A	GP	Wasilla	200	8D / E	12.0		35,071	477	0	31,437	66,985	34,832
06-8460	Eligibility Technician II	FT	A	GP	Anchorage	200	14G	12.0		55,439	754	0	38,782	94,975	43,689
06-8461	Eligibility Technician II	FT	A	GP	Anchorage	200	14B / C	12.0		46,950	639	0	35,721	83,310	38,323
06-8462	Eligibility Technician II	FT	A	GP	Anchorage	200	14C / D	12.0		0	0	0	0	0	0
06-8463	Eligibility Technician IV	FT	A	SS	Anchorage	200	17J	12.0		73,008	0	0	45,157	118,165	54,356
06-8464	Eligibility Technician II	FT	A	GP	Wasilla	200	14G	12.0		55,439	754	0	38,782	94,975	43,689
06-8465	Eligibility Technician II	FT	A	GP	Wasilla	200	14B / C	12.0		47,015	640	0	35,744	83,399	38,364
06-8467	Office Assistant I	FT	A	GP	Kenai	200	8D / E	12.0		34,353	467	0	31,178	65,998	34,319
06-8468	Eligibility Technician II	FT	A	GP	Ketchikan	200	14B / C	12.0		47,860	651	0	36,049	84,560	38,898
06-8469	Eligibility Technician II	FT	A	GP	Wasilla	200	14M	12.0		63,570	865	0	41,714	106,149	48,829
06-8470	Office Assistant II	FT	A	GP	Anchorage	200	10D / E	12.0		38,768	527	0	32,770	72,065	37,474
06-8471	Eligibility Technician II	FT	A	GP	Anchorage	200	14C / D	12.0		49,979	680	0	36,813	87,472	40,237
06-8472	Eligibility Technician II	FT	A	GP	Anchorage	99	14O / P	12.0		67,854	923	0	43,258	112,035	51,536
06-8473	Eligibility Technician II	FT	A	GP	Kenai	200	14J / K	12.0		59,553	810	0	40,265	100,628	46,289
06-8474	Eligibility Technician II	FT	A	GP	Anchorage	99	14M / N	12.0		65,465	891	0	42,397	108,753	50,026
06-8475	Eligibility Technician II	FT	A	GP	Anchorage	200	14C / D	12.0		49,082	668	0	36,489	86,239	39,670
06-8476	Office Assistant I	FT	A	GP	Anchorage	200	8C / D	12.0		33,761	459	0	30,965	65,185	33,896
06-8477	Eligibility Technician II	FT	A	GP	Anchorage	200	14C / D	12.0		49,530	674	0	36,651	86,855	86,855
06-8478	Eligibility Technician II	FT	A	GP	Fairbanks	203	14C / D	12.0		0	0	0	0	0	0
06-8479	Eligibility Technician II	FT	A	GP	Fairbanks	203	14C / D	12.0		50,399	686	0	36,964	88,049	40,503
06-8480	Eligibility Technician II	FT	A	GP	Fairbanks	203	14C / D	12.0		0	0	0	0	0	0
06-8481	Eligibility Technician II	FT	A	GP	Wasilla	200	14C / D	12.0		49,381	672	0	36,597	86,650	39,859
06-8482	Eligibility Technician II	FT	A	GP	Kenai	200	14J	12.0		57,759	786	0	39,618	98,163	98,163
06-8483	Eligibility Technician II	FT	A	GP	Anchorage	200	14B / C	12.0		47,665	649	0	35,978	84,292	38,774
06-8484	Eligibility Technician II	FT	A	GP	Wasilla	200	14C / D	12.0		49,007	667	0	36,462	86,136	39,623
06-8486	Eligibility Technician II	FT	A	GP	Anchorage	200	14C / D	12.0		0	0	0	0	0	0
06-8488	Eligibility Technician II	FT	A	GP	Wasilla	200	14C / D	12.0		0	0	0	0	0	0
06-8498	Eligibility Technician II	FT	A	GP	Anchorage	200	14C / D	12.0		49,680	676	0	36,705	87,061	40,048
06-8499	Eligibility Technician II	FT	A	GP	Anchorage	200	14C / D	12.0		0	0	0	0	0	0
06-8500	Eligibility Technician II	FT	A	GP	Anchorage	200	14O / P	12.0		69,507	946	0	43,855	114,308	52,582

Note: If a position is split, an asterisk (*) will appear in the Split/Count column. If the split position is also counted in the component, two asterisks (**) will appear in this column.
 [No valid job title] appearing in the Job Class Title indicates that the PCN has an invalid class code or invalid range for the class code effective date of this scenario.

Personal Services Expenditure Detail
Department of Health and Social Services

Scenario: FY2022 Governor (17280)
Component: Public Assistance Field Services (236)
RDU: Public Assistance (73)

PCN	Job Class Title	Time Status	Retire Code	Barg Unit	Location	Salary Sched	Range / Step	Comp Months	Split / Count	Annual Salaries	COLA	Premium Pay	Annual Benefits	Total Costs	UGF Amount
06-8501	Eligibility Technician III	FT	A	GP	Kenai	200	16G / J	12.0		66,313	902	0	42,703	109,918	50,562
06-8502	Eligibility Technician II	FT	A	GP	Wasilla	200	14E / F	12.0		51,933	707	0	37,517	90,157	41,472
06-8503	Office Assistant I	FT	A	GP	Bethel	250	8D / E	12.0		51,729	704	0	37,444	89,877	46,736
06-8504	Eligibility Technician II	FT	A	GP	Juneau	205	14D / E	12.0		52,869	719	0	37,855	91,443	42,064
06-8505	Pb Asst Fsmii	FT	A	SS	Anchorage	200	21M / M	12.0		104,874	0	0	56,648	161,522	83,991
06-8506	Eligibility Technician II	FT	A	GP	Anchorage	200	14E / F	12.0		52,094	709	0	37,575	90,378	41,574
06-8507	Eligibility Technician IV	FT	A	SS	Anchorage	200	17C / D	12.0		66,102	0	0	42,667	108,769	50,034
06-8508	Eligibility Technician II	FT	A	GP	Kenai	200	14C / D	12.0		49,007	667	0	36,462	86,136	39,623
06-8509	Eligibility Technician II	FT	A	GP	Ketchikan	200	14C / D	12.0		48,334	658	0	36,220	85,212	39,198
06-8510	Eligibility Technician II	FT	A	GP	Anchorage	200	14K / L	12.0		60,918	829	0	40,757	102,504	47,152
06-8511	Eligibility Technician III	FT	A	GP	Anchorage	200	16D / E	12.0		59,631	811	0	40,293	100,735	46,338
06-8512	Eligibility Technician II	FT	A	GP	Wasilla	200	14B / C	12.0		47,470	646	0	35,908	84,024	38,651
06-8513	Eligibility Technician II	FT	A	GP	Wasilla	200	14J	12.0		57,759	786	0	39,618	98,163	45,155
06-8514	Office Assistant II	FT	A	GP	Anchorage	200	10C / D	12.0		0	0	0	0	0	0
06-8515	Administrative Assistant II	FT	A	GP	Ketchikan	200	14J	12.0		57,759	786	0	39,618	98,163	51,045
06-8516	Eligibility Technician II	FT	A	GP	Anchorage	200	14J	12.0		57,759	786	0	39,618	98,163	45,155
06-8517	Eligibility Technician II	FT	A	GP	Anchorage	200	14C / D	12.0		48,409	659	0	36,247	85,315	39,245
06-8518	Eligibility Technician II	FT	A	GP	Anchorage	200	14B / C	12.0		46,950	639	0	35,721	83,310	38,323
06-8519	Public Assistance Analyst II	FT	A	GP	Anchorage	200	18E / F	12.0		68,481	932	0	43,485	112,898	58,707
06-8520	Eligibility Technician II	FT	A	GP	Anchorage	200	14J / K	12.0		59,319	807	0	40,181	100,307	46,141
06-8521	Eligibility Technician III	FT	A	GP	Anchorage	200	16K / L	12.0		68,884	937	0	43,630	113,451	52,188
06-8522	Eligibility Technician II	FT	A	GP	Anchorage	200	14C / D	12.0		0	0	0	0	0	0
06-8524	Office Assistant I	FT	A	GP	Kenai	200	8D / E	12.0		34,353	467	0	31,178	65,998	34,319
06-8525	Eligibility Technician II	FT	A	GP	Homer	200	14G / J	12.0		56,289	766	0	39,088	96,143	44,226
06-8526	Eligibility Technician II	FT	A	GP	Kenai	200	14L / M	12.0		63,486	864	0	41,683	106,033	48,775
06-8527	Eligibility Technician II	FT	A	GP	Wasilla	200	14K	12.0		59,631	811	0	40,293	100,735	46,338
06-8528	Eligibility Technician II	FT	A	GP	Wasilla	200	14D / E	12.0		50,352	685	0	36,947	87,984	40,473
06-8533	Public Assistance Analyst I	FT	A	GP	Anchorage	200	16C / D	12.0		55,960	761	0	38,970	95,691	49,759
06-8535	Public Assistance Analyst I	FT	A	GP	Anchorage	200	16C / D	12.0		56,569	770	0	39,189	96,528	50,195
06-8537	Office Assistant I	FT	A	GP	Wasilla	200	8C / D	12.0		33,339	454	0	30,812	64,605	33,595
06-8540	Eligibility Technician II	FT	A	GP	Fairbanks	203	14G / J	12.0		59,295	807	0	40,172	100,274	46,126
06-8541	Eligibility Technician II	FT	A	GP	Kenai	200	14B / C	12.0		47,340	644	0	35,861	83,845	38,569
06-8545	Eligibility Technician II	FT	A	GP	Wasilla	200	14A / B	12.0		0	0	0	0	0	0
06-8546	Eligibility Technician III	FT	A	GP	Anchorage	200	16C / D	12.0		55,699	758	0	38,875	95,332	95,332
06-8547	Eligibility Technician II	FT	A	GP	Fairbanks	203	14B / C	12.0		48,162	655	0	36,158	84,975	39,089
06-8548	Emp Svc Tech II	FT	A	GP	Fairbanks	203	15D / E	12.0		55,972	762	0	38,974	95,708	0
06-8554	Public Asst P/O	FT	A	SS	Anchorage	200	21C / D	12.0		83,950	0	0	49,103	133,053	69,188
06-8555	Eligibility Technician II	FT	A	GP	Anchorage	200	14G	12.0		55,439	754	0	38,782	94,975	43,689

Note: If a position is split, an asterisk (*) will appear in the Split/Count column. If the split position is also counted in the component, two asterisks (**) will appear in this column. [No valid job title] appearing in the Job Class Title indicates that the PCN has an invalid class code or invalid range for the class code effective date of this scenario.

Personal Services Expenditure Detail
Department of Health and Social Services

Scenario: FY2022 Governor (17280)
Component: Public Assistance Field Services (236)
RDU: Public Assistance (73)

PCN	Job Class Title	Time Status	Retire Code	Barg Unit	Location	Salary Sched	Range / Step	Comp Months	Split / Count	Annual Salaries	COLA	Premium Pay	Annual Benefits	Total Costs	UGF Amount
06-8556	Eligibility Technician II	FT	A	GP	Anchorage	200	14D / E	12.0		51,698	703	0	37,433	89,834	41,324
06-8557	Eligibility Technician III	FT	A	GP	Anchorage	200	16C / D	12.0		55,873	760	0	38,938	95,571	95,571
06-8558	Eligibility Technician II	FT	A	GP	Fairbanks	203	14G	12.0		57,096	777	0	39,379	97,252	44,736
06-8559	Eligibility Technician II	FT	A	GP	Anchorage	200	14C / D	12.0		48,708	663	0	36,354	85,725	39,434
06-8560	Eligibility Technician II	FT	A	GP	Fairbanks	203	14B / C	12.0		49,494	673	0	36,638	86,805	39,930
06-8562	Eligibility Technician II	FT	A	GP	Kenai	200	14F / G	12.0		54,065	736	0	38,286	93,087	42,820
06-8563	Eligibility Technician II	FT	A	GP	Wasilla	200	14L / M	12.0		62,147	846	0	41,201	104,194	47,929
06-8564	Eligibility Technician II	FT	A	GP	Wasilla	200	14K / L	12.0		60,275	820	0	40,525	101,620	46,745
06-8565	Eligibility Technician II	FT	A	GP	Wasilla	200	14B / C	12.0		46,690	635	0	35,627	82,952	38,158
06-8566	Eligibility Technician III	FT	A	GP	Fairbanks	203	16L	12.0		73,047	994	0	45,131	119,172	54,819
06-8568	Emp Svc Tech II	FT	A	GG	Fairbanks	203	15N / O	12.0		78,636	1,070	0	47,146	126,852	0
06-8569	Eligibility Technician II	FT	A	GP	Juneau	205	14C / D	12.0		0	0	0	0	0	0
06-8570	Eligibility Technician II	FT	A	GP	Ketchikan	200	14E / F	12.0		51,933	707	0	37,517	90,157	41,472
06-8571	Eligibility Technician II	FT	A	GP	Wasilla	200	14G	12.0		55,439	754	0	38,782	94,975	43,689
06-8580	Public Assistance Analyst I	FT	A	GP	Anchorage	200	16K / L	12.0		69,347	944	0	43,797	114,088	59,326
06-8582	Pb Asst Fsmii	FT	A	SS	Wasilla	200	21E / F	12.0		90,388	0	0	51,424	141,812	73,742
06-8583	Eligibility Technician II	FT	A	GP	Anchorage	200	14J	12.0		57,759	786	0	39,618	98,163	45,155
06-8584	Eligibility Technician II	FT	A	GP	Bethel	250	14E / F	12.0		78,871	1,073	0	47,231	127,175	58,501
06-8585	Eligibility Technician II	FT	A	GP	Wasilla	200	14G / J	12.0		57,276	779	0	39,444	97,499	44,850
06-8586	Eligibility Technician III	FT	A	GP	Anchorage	200	16C / D	12.0		56,916	774	0	39,314	97,004	97,004
06-8587	Training Specialist I	FT	A	GP	Anchorage	200	16C / D	12.0		57,525	783	0	39,534	97,842	97,842
06-8589	Public Assistance Analyst II	FT	A	SS	Anchorage	200	18C / D	12.0		68,905	0	0	43,677	112,582	38,278
06-8592	Public Assistance Analyst II	FT	A	GP	Anchorage	200	18D / E	12.0		67,906	924	0	43,277	112,107	58,296
06-8593	Office Assistant I	FT	A	GP	Fairbanks	203	8C / D	12.0		35,042	477	0	31,426	66,945	34,811
06-8594	Administrative Assistant II	FT	A	GP	Anchorage	200	14C / D	12.0		48,484	660	0	36,274	85,418	44,417
06-8600	Eligibility Technician IV	FT	A	SS	Anchorage	200	17C / D	12.0		65,915	0	0	42,599	108,514	49,916
06-8601	Office Assistant I	FT	A	GP	Anchorage	200	8C / D	12.0		0	0	0	0	0	0
06-8602	Eligibility Technician II	FT	A	GP	Anchorage	200	14C / D	12.0		0	0	0	0	0	0
06-8603	Eligibility Technician II	FT	A	GP	Anchorage	200	14B / C	12.0		48,185	656	0	36,166	85,007	39,103
06-8604	Eligibility Technician II	FT	A	GP	Anchorage	200	14C / D	12.0		0	0	0	0	0	0
06-8605	Eligibility Technician II	FT	A	GP	Anchorage	200	14C / D	12.0		49,904	679	0	36,786	87,369	40,190
06-8606	Eligibility Technician II	FT	A	GP	Wasilla	200	14B / C	12.0		47,795	650	0	36,025	84,470	38,856
06-8607	Eligibility Technician II	FT	A	GP	Anchorage	200	14C / D	12.0		0	0	0	0	0	0
06-8608	Eligibility Technician II	FT	A	GP	Anchorage	200	14C / D	12.0		49,904	679	0	36,786	87,369	40,190
06-8609	Eligibility Technician II	FT	A	GP	Anchorage	200	14C / D	12.0		48,633	662	0	36,327	85,622	39,386
06-8610	Eligibility Technician II	FT	A	GP	Anchorage	200	14C / D	12.0		48,633	662	0	36,327	85,622	39,386
06-8611	Eligibility Technician III	FT	A	GP	Anchorage	200	16C / D	12.0		56,047	763	0	39,001	95,811	44,073
06-8612	Eligibility Office Manager II	FT	A	SS	Anchorage	200	19K / L	12.0		86,918	0	0	50,173	137,091	71,287

Note: If a position is split, an asterisk (*) will appear in the Split/Count column. If the split position is also counted in the component, two asterisks (**) will appear in this column. [No valid job title] appearing in the Job Class Title indicates that the PCN has an invalid class code or invalid range for the class code effective date of this scenario.

Personal Services Expenditure Detail
Department of Health and Social Services

Scenario: FY2022 Governor (17280)
Component: Public Assistance Field Services (236)
RDU: Public Assistance (73)

PCN	Job Class Title	Time Status	Retire Code	Barg Unit	Location	Salary Sched	Range / Step	Comp Months	Split / Count	Annual Salaries	COLA	Premium Pay	Annual Benefits	Total Costs	UGF Amount
06-8613	Training Specialist II	FT	A	GP	Anchorage	200	18C / D	12.0		64,617	879	0	42,091	107,587	55,945
06-8617	Eligibility Technician II	FT	A	GP	Anchorage	200	14E / F	12.0		52,480	714	0	37,715	90,909	41,818
06-8618	Eligibility Technician II	FT	A	GP	Wasilla	200	14B / C	12.0		47,990	653	0	36,096	84,739	38,980
06-8619	Office Assistant I	FT	A	GP	Anchorage	200	8D / E	12.0		34,986	476	0	31,406	66,868	34,771
06-8621	Eligibility Technician II	FT	A	GP	Ketchikan	200	14B / C	12.0		47,015	640	0	35,744	83,399	38,364
06-8622	Eligibility Technician II	FT	A	GP	Juneau	205	14C / D	12.0		51,289	698	0	37,285	89,272	41,065
06-8627	Eligibility Technician II	FT	A	GP	Anchorage	200	14D / E	12.0		50,502	687	0	37,001	88,190	40,567
06-8628	Eligibility Technician II	FT	A	GP	Anchorage	200	14G	12.0		55,439	754	0	38,782	94,975	43,689
06-8629	Eligibility Technician II	FT	A	GP	Anchorage	200	14B / C	12.0		48,185	656	0	36,166	85,007	39,103
06-8630	Eligibility Technician III	FT	A	GP	Wasilla	200	16G	12.0		63,882	869	0	41,826	106,577	49,025
06-8631	Eligibility Technician II	FT	A	GP	Wasilla	200	14C / D	12.0		0	0	0	0	0	0
06-8632	Eligibility Technician II	FT	A	GP	Wasilla	200	14B / C	12.0		47,080	641	0	35,767	83,488	38,405
06-8633	Office Assistant I	FT	A	GP	Wasilla	200	8C / D	12.0		33,381	454	0	30,828	64,663	33,625
06-8640	Eligibility Technician II	FT	A	GP	Anchorage	200	14B / C	12.0		47,015	640	0	35,744	83,399	38,364
06-8641	Eligibility Technician II	FT	A	GP	Wasilla	200	14B / C	12.0		47,990	653	0	36,096	84,739	38,980
06-8642	Eligibility Technician II	FT	A	GP	Wasilla	200	14B / C	12.0		47,795	650	0	36,025	84,470	38,856
06-8646	Emp Svc Tech II	FT	A	GP	Wasilla	200	15C / D	12.0		53,381	726	0	38,040	92,147	0
06-8647	Eligibility Office Manager I	FT	A	SS	Nome	237	18D / E	12.0		98,363	0	0	54,300	152,663	79,385
06-8649	Office Assistant I	FT	A	GP	Wasilla	200	8C / D	12.0		33,296	453	0	30,797	64,546	33,564
06-8650	Office Assistant IV	FT	A	SS	Anchorage	600	12E / F	12.0		48,427	0	0	36,293	84,720	44,054
06-8651	Eligibility Technician III	FT	A	GP	Anchorage	200	16F / G	12.0		63,439	863	0	41,666	105,968	48,745
06-8652	Eligibility Technician II	FT	A	GP	Anchorage	200	14D / E	12.0		50,502	687	0	37,001	88,190	40,567
06-8653	Eligibility Technician II	FT	A	GP	Anchorage	200	14C / D	12.0		49,007	667	0	36,462	86,136	86,136
06-8655	Eligibility Technician II	FT	A	GP	Ketchikan	200	14F / G	12.0		54,065	736	0	38,286	93,087	42,820
06-8656	Eligibility Technician II	FT	A	GP	Ketchikan	200	14C / D	12.0		49,979	680	0	36,813	87,472	40,237
06-8657	Eligibility Technician II	FT	A	GP	Ketchikan	200	14J	12.0		57,759	786	0	39,618	98,163	45,155
06-8660	Eligibility Technician II	FT	A	GP	Anchorage	200	14G	12.0		55,439	754	0	38,782	94,975	43,689
06-8661	Eligibility Technician IV	FT	A	SS	Juneau	205	17E / F	12.0		73,606	0	0	45,373	118,979	61,869
06-8662	Office Assistant II	FT	A	GP	Wasilla	200	10E / F	12.0		39,865	542	0	33,166	73,573	38,258
06-8663	Eligibility Technician II	FT	A	GP	Wasilla	200	14C / D	12.0		49,455	673	0	36,624	86,752	39,906
06-8664	Office Assistant II	FT	A	GP	Wasilla	200	10C / D	12.0		37,728	513	0	32,395	70,636	36,731
06-8665	Office Assistant II	FT	A	GP	Wasilla	200	10C / D	12.0		38,175	519	0	32,556	71,250	37,050
06-8666	Eligibility Technician II	FT	A	GP	Wasilla	200	14C / D	12.0		49,007	667	0	36,462	86,136	39,623
06-8667	Eligibility Technician IV	FT	A	SS	Wasilla	200	17D / E	12.0		68,307	0	0	43,462	111,769	51,414
06-8668	Eligibility Technician IV	FT	A	SS	Homer	200	17C / D	12.0		66,102	0	0	42,667	108,769	50,034
06-8669	Eligibility Technician III	FT	A	GP	Wasilla	200	16J	12.0		66,534	905	0	42,782	110,221	50,702
06-8670	Eligibility Technician II	FT	A	GP	Homer	200	14B / C	12.0		47,340	644	0	35,861	83,845	38,569
06-8671	Eligibility Technician II	FT	A	GP	Kodiak	211	14C / D	12.0		55,063	749	0	38,646	94,458	43,451

Note: If a position is split, an asterisk (*) will appear in the Split/Count column. If the split position is also counted in the component, two asterisks (**) will appear in this column. [No valid job title] appearing in the Job Class Title indicates that the PCN has an invalid class code or invalid range for the class code effective date of this scenario.

Personal Services Expenditure Detail
Department of Health and Social Services

Scenario: FY2022 Governor (17280)
Component: Public Assistance Field Services (236)
RDU: Public Assistance (73)

PCN	Job Class Title	Time Status	Retire Code	Barg Unit	Location	Salary Sched	Range / Step	Comp Months	Split / Count	Annual Salaries	COLA	Premium Pay	Annual Benefits	Total Costs	UGF Amount
06-8672	Eligibility Technician II	FT	A	GP	Wasilla	200	14B / C	12.0		47,990	653	0	36,096	84,739	38,980
06-8673	Eligibility Technician II	FT	A	GP	Wasilla	200	14F / G	12.0		54,426	741	0	38,416	93,583	43,048
06-8674	Eligibility Technician II	FT	A	GP	Wasilla	200	14C / D	12.0		48,932	666	0	36,435	86,033	39,575
06-8675	Eligibility Technician II	FT	A	GP	Wasilla	200	14D / E	12.0		50,726	690	0	37,082	88,498	40,709
06-8676	Eligibility Technician II	FT	A	GP	Wasilla	200	14B / C	12.0		48,185	656	0	36,166	85,007	39,103
06-8677	Eligibility Technician II	FT	A	GP	Wasilla	200	14E / F	12.0		0	0	0	0	0	0
06-8678	Eligibility Technician II	FT	A	GP	Wasilla	200	14C / D	12.0		48,633	662	0	36,327	85,622	39,386
06-8679	Eligibility Technician III	FT	A	GG	Wasilla	100	16C / D	12.0		58,110	791	0	39,745	98,646	98,646
06-8680	Eligibility Technician II	FT	A	GP	Wasilla	200	14B / C	12.0		47,860	651	0	36,049	84,560	38,898
06-8681	Eligibility Technician III	FT	A	GG	Wasilla	200	16P	12.0		80,594	1,097	0	47,853	129,544	59,590
06-8689	Office Assistant II	FT	A	GP	Anchorage	200	10A / B	12.0		36,231	493	0	31,855	68,579	35,661
06-8690	Office Assistant II	FT	A	GG	Anchorage	200	10C / D	12.0		0	0	0	0	0	0
06-8692	Office Assistant II	FT	A	GG	Anchorage	200	10C / D	12.0		0	0	0	0	0	0
06-8693	Office Assistant II	FT	A	GG	Anchorage	200	10C / D	12.0		0	0	0	0	0	0
06-8696	Eligibility Technician III	FT	A	GG	Wasilla	200	16C / D	12.0		57,525	783	0	39,534	97,842	97,842
06-8697	Eligibility Technician III	FT	A	GG	Wasilla	200	16C / D	12.0		57,525	783	0	39,534	97,842	97,842
06-8698	Eligibility Technician III	FT	A	GG	Wasilla	200	16C / D	12.0		57,525	783	0	39,534	97,842	97,842
06-8699	Eligibility Technician III	FT	A	GG	Sitka	205	16C / D	12.0		60,411	822	0	40,575	101,808	101,808
06-8700	Eligibility Technician IV	FT	A	SS	Wasilla	200	17B / C	12.0		61,797	0	0	41,114	102,911	47,339
06-8702	Eligibility Technician IV	FT	A	SS	Ketchikan	200	17C / D	12.0		66,102	0	0	42,667	108,769	50,034
07-5202	Emp Svc Tech II	FT	A	GP	Wasilla	200	15G	12.0		59,631	811	0	40,293	100,735	0
07-5205	Emp Svc Tech II	FT	A	GP	Wasilla	200	15C / D	12.0		52,738	718	0	37,808	91,264	0
07-5216	Emp Svc Tech II	FT	A	GP	Fairbanks	203	15A / B	12.0		51,480	700	0	37,354	89,534	0
07-5234	Emp Svc Techiii	FT	A	SS	Fairbanks	203	16J / K	12.0		70,971	0	0	44,422	115,393	0
07-5268	Emp Svc Tech II	FT	A	GP	Wasilla	200	15O / P	12.0		75,113	1,022	0	45,876	122,011	0
07-5365	Emp Svc Tech II	FT	A	GP	Wasilla	200	15D / E	12.0		54,065	736	0	38,286	93,087	0
07-5421	Emp Svc Tech II	FT	A	GP	Kenai	200	15L	12.0		66,183	900	0	42,656	109,739	0
07-5434	Emp Svc Tech II	FT	A	GP	Ketchikan	200	15L / M	12.0		68,060	926	0	43,333	112,319	0
07-5530	Emp Svc Techiii	FT	A	SS	Wasilla	200	16A / B	12.0		56,570	0	0	39,229	95,799	0
07-5591	Public Asst P/O	FT	A	GP	Anchorage	200	21L	12.0		99,177	1,349	0	54,554	155,080	80,642
07-5789	Emp Svc Tech II	FT	A	GP	Wasilla	200	15C / D	12.0		52,255	711	0	37,633	90,599	0
07-5830	Emp Svc Tech II	FT	A	GP	Fairbanks	203	15G / J	12.0		62,587	852	0	41,359	104,798	0
07-5971	Emp Svc Tech II	FT	A	GP	Nome	237	15K	12.0		87,809	1,195	0	50,454	139,458	0
07-5972	Emp Svc Tech II	FT	A	GP	Nome	237	15L / M	12.0		93,478	1,272	0	52,498	147,248	0
07-5973	Emp Svc Tech II	FT	A	GP	Nome	237	15K / L	12.0		90,197	1,227	0	51,315	142,739	0
07-5974	Emp Svc Tech II	FT	A	GP	Fairbanks	203	15L / M	12.0		68,733	935	0	43,575	113,243	0
07-5976	Emp Svc Tech II	FT	A	GP	Wasilla	200	15E / F	12.0		55,786	759	0	38,907	95,452	0
07-5977	Emp Svc Techiii	FT	A	SS	Kenai	200	16J / K	12.0		70,099	0	0	44,108	114,207	0

Note: If a position is split, an asterisk (*) will appear in the Split/Count column. If the split position is also counted in the component, two asterisks (**) will appear in this column. [No valid job title] appearing in the Job Class Title indicates that the PCN has an invalid class code or invalid range for the class code effective date of this scenario.

Personal Services Expenditure Detail
Department of Health and Social Services

Scenario: FY2022 Governor (17280)
Component: Public Assistance Field Services (236)
RDU: Public Assistance (73)

PCN	Job Class Title	Time Status	Retire Code	Barg Unit	Location	Salary Sched	Range / Step	Comp Months	Split / Count	Annual Salaries	COLA	Premium Pay	Annual Benefits	Total Costs	UGF Amount		
07-5979	Eligibility Technician IV	FT	A	SS	Kenai	200	17D / E	12.0		68,032	0	0	43,363	111,395	51,242		
07-5980	Emp Svc Tech II	FT	A	GP	Kenai	200	15A / B	12.0		48,484	660	0	36,274	85,418	0		
07-5981	Emp Svc Tech II	FT	A	GP	Kenai	200	15B / C	12.0		50,203	683	0	36,894	87,780	0		
07-5982	Emp Svc Tech II	FT	A	GP	Kenai	200	15E / F	12.0		57,264	779	0	39,440	97,483	0		
07-5983	Emp Svc Tech II	FT	A	GP	Homer	200	15C / D	12.0		53,703	731	0	38,156	92,590	0		
07-5999	Emp Svc Tech II	FT	A	GP	Wasilla	200	15L / M	12.0		67,166	914	0	43,010	111,090	0		
07-6000	Eligibility Technician II	FT	A	GP	Anchorage	200	14F / G	12.0		54,426	741	0	38,416	93,583	43,048		
07-6029	Emp Svc Tech II	FT	A	GG	Fairbanks	203	15M / N	12.0		70,663	961	0	44,271	115,895	0		
21-3046	Emp Svc Tech II	FT	A	GP	Fairbanks	203	15K	12.0		66,027	898	0	42,600	109,525	0		
Total													Total Salary Costs:	24,059,743			
Positions													Total COLA:	269,647			
New													Total Premium Pay:	0			
Deleted													Total Benefits:	16,570,159			
Full Time Positions:	420	0	45												Total Pre-Vacancy:	40,899,549	
Part Time Positions:	0	0	0												Minus Vacancy Adjustment of	(7,799,949)	
Non Permanent Positions:	0	0	0												19.07%:		
Positions in Component:	420	0	45												Total Post-Vacancy:	33,099,600	
													Plus Lump Sum Premium Pay:	0			
													Personal Services Line 100:	33,099,600			

PCN Funding Sources:	Pre-Vacancy	Post-Vacancy	Percent
1002 Federal Receipts	20,078,186	16,249,077	49.09%
1003 General Fund Match	19,404,328	15,703,730	47.44%
1007 Interagency Receipts	1,417,035	1,146,793	3.46%
Total PCN Funding:	40,899,549	33,099,600	100.00%

Note: If a position is split, an asterisk (*) will appear in the Split/Count column. If the split position is also counted in the component, two asterisks (**) will appear in this column. [No valid job title] appearing in the Job Class Title indicates that the PCN has an invalid class code or invalid range for the class code effective date of this scenario.

DEPARTMENT OF HEALTH AND SOCIAL SERVICES
 Division of Public Assistance
 Public Assistance Field Services 236

68180
 Eligibility Technician
 IV
 17
 Wasilla CL

68700
 Eligibility Technician
 IV
 17
 Wasilla CL

68630
 Eligibility Technician
 III
 16
 Wasilla CL

68098
 Eligibility Technician
 IV
 17
 Wasilla CL

68172
 Eligibility Technician
 IV
 17
 Wasilla CL

68171
 Eligibility Technician
 III
 16
 Wasilla CL

68228
 Eligibility Technician
 II
 14
 Wasilla CL

68100
 Eligibility Technician
 II
 14
 Wasilla CL

68139
 Eligibility Technician
 II
 14
 Wasilla CL

68106
 Eligibility Technician
 III
 16
 Wasilla CL

68375
 Eligibility Technician
 II
 14
 Wasilla CL

68251
 Eligibility Technician
 II
 14
 Wasilla CL

68322
 Eligibility Technician
 II
 14
 Wasilla CL

68225
 Eligibility Technician
 II
 14
 Wasilla CL

68284
 Eligibility Technician
 II
 14
 Wasilla CL

68436
 Eligibility Technician
 II
 14
 Wasilla CL

68465
 Eligibility Technician
 II
 14
 Wasilla CL

68377
 Eligibility Technician
 II
 14
 Wasilla CL

68481
 Eligibility Technician
 II
 14
 Wasilla CL

68378
 Eligibility Technician
 III
 16
 Wasilla CL

68424
 Eligibility Technician
 II
 14
 Wasilla CL

68632
 Eligibility Technician
 II
 14
 Wasilla CL

68641
 Eligibility Technician
 II
 14
 Wasilla CL

68565
 Eligibility Technician
 II
 14
 Wasilla CL

68571
 Eligibility Technician
 II
 14
 Wasilla CL

68457
 Eligibility Technician
 II
 14
 Wasilla CL

68484
 Eligibility Technician
 II
 14
 Wasilla CL

68672
 Eligibility Technician
 II
 14
 Wasilla CL

68606
 Eligibility Technician
 II
 14
 Wasilla CL

68618
 Eligibility Technician
 II
 14
 Wasilla CL

68642
 Eligibility Technician
 II
 14
 Wasilla CL

68676
 Eligibility Technician
 II
 14
 Wasilla CL

68666
 Eligibility Technician
 II
 14
 Wasilla CL

68384
Eligibility Office
Manager II
19
Wasilla CL

68201
Eligibility Technician
IV
17
Wasilla CL

68366
Office Assistant IV
12
Wasilla CL

68667
Eligibility Technician
IV
17
Wasilla CL

68502
Eligibility Technician
II
14
Wasilla CL

68512
Eligibility Technician
II
14
Wasilla CL

68109
Office Assistant II
10
Wasilla CL

68143
Office Assistant I
8
Wasilla CL

68084
Eligibility Technician
III
16
Wasilla CL

68175
Eligibility Technician
II
14
Wasilla CL

68513
Eligibility Technician
II
14
Wasilla CL

68527
Eligibility Technician
II
14
Wasilla CL

68237
Office Assistant I
8
Wasilla CL

68238
Office Assistant I
8
Wasilla CL

68438
Eligibility Technician
II
14
Wasilla CL

68464
Eligibility Technician
II
14
Wasilla CL

68528
Eligibility Technician
II
14
Wasilla CL

68563
Eligibility Technician
II
14
Wasilla CL

68341
Office Assistant II
10
Wasilla CL

68430
Office Assistant I
8
Wasilla CL

68680
Eligibility Technician
II
14
Wasilla CL

68469
Eligibility Technician
II
14
Wasilla CL

68673
Eligibility Technician
II
14
Wasilla CL

68675
Eligibility Technician
II
14
Wasilla CL

68459
Office Assistant I
8
Wasilla CL

68537
Office Assistant I
8
Wasilla CL

68564
Eligibility Technician
II
14
Wasilla CL

68585
Eligibility Technician
II
14
Wasilla CL

68678
Eligibility Technician
II
14
Wasilla CL

68681
Eligibility Technician
III
16
Wasilla CL

68633
Office Assistant I
8
Wasilla CL

68649
Office Assistant I
8
Wasilla CL

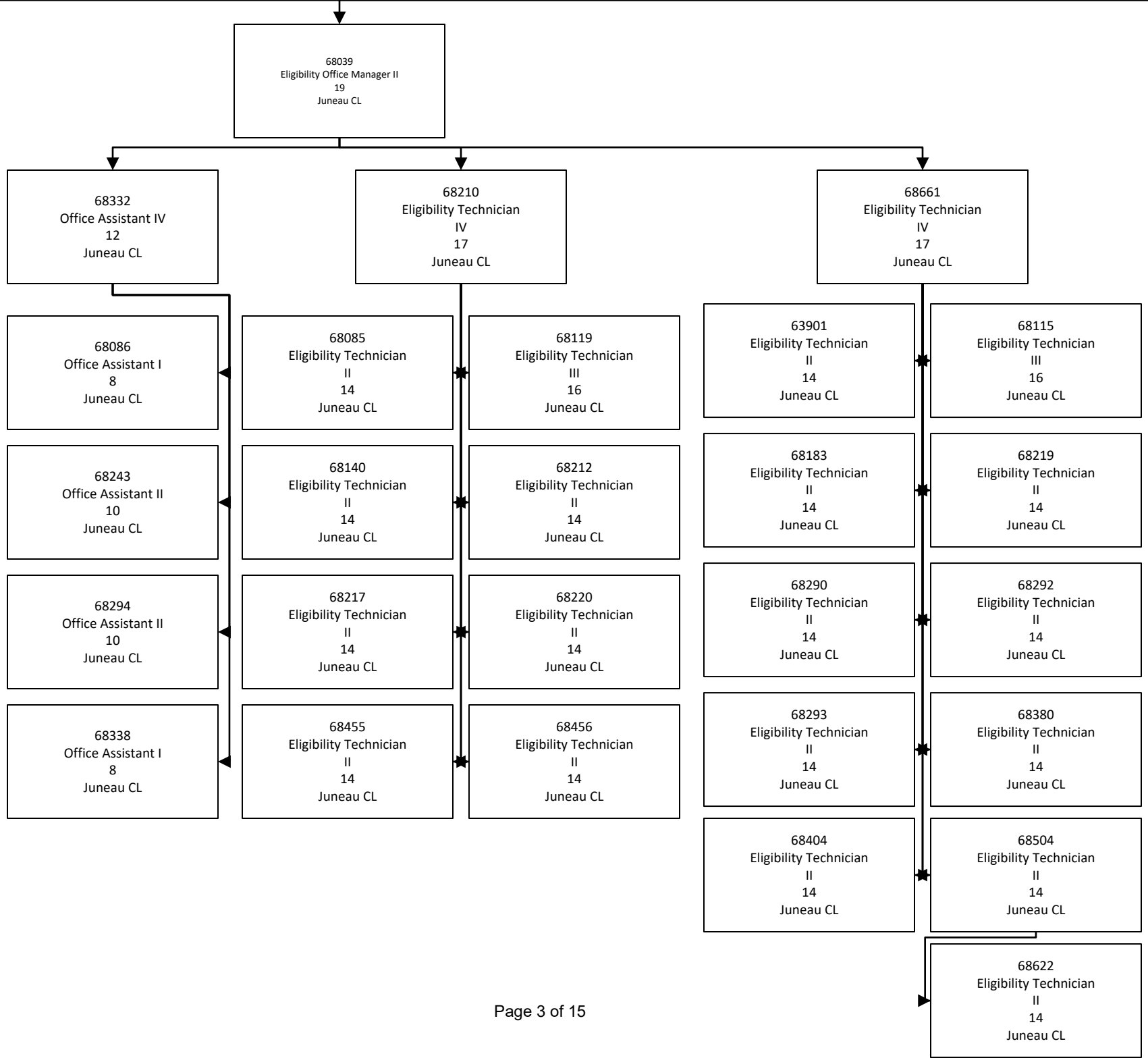
68663
Eligibility Technician
II
14
Wasilla CL

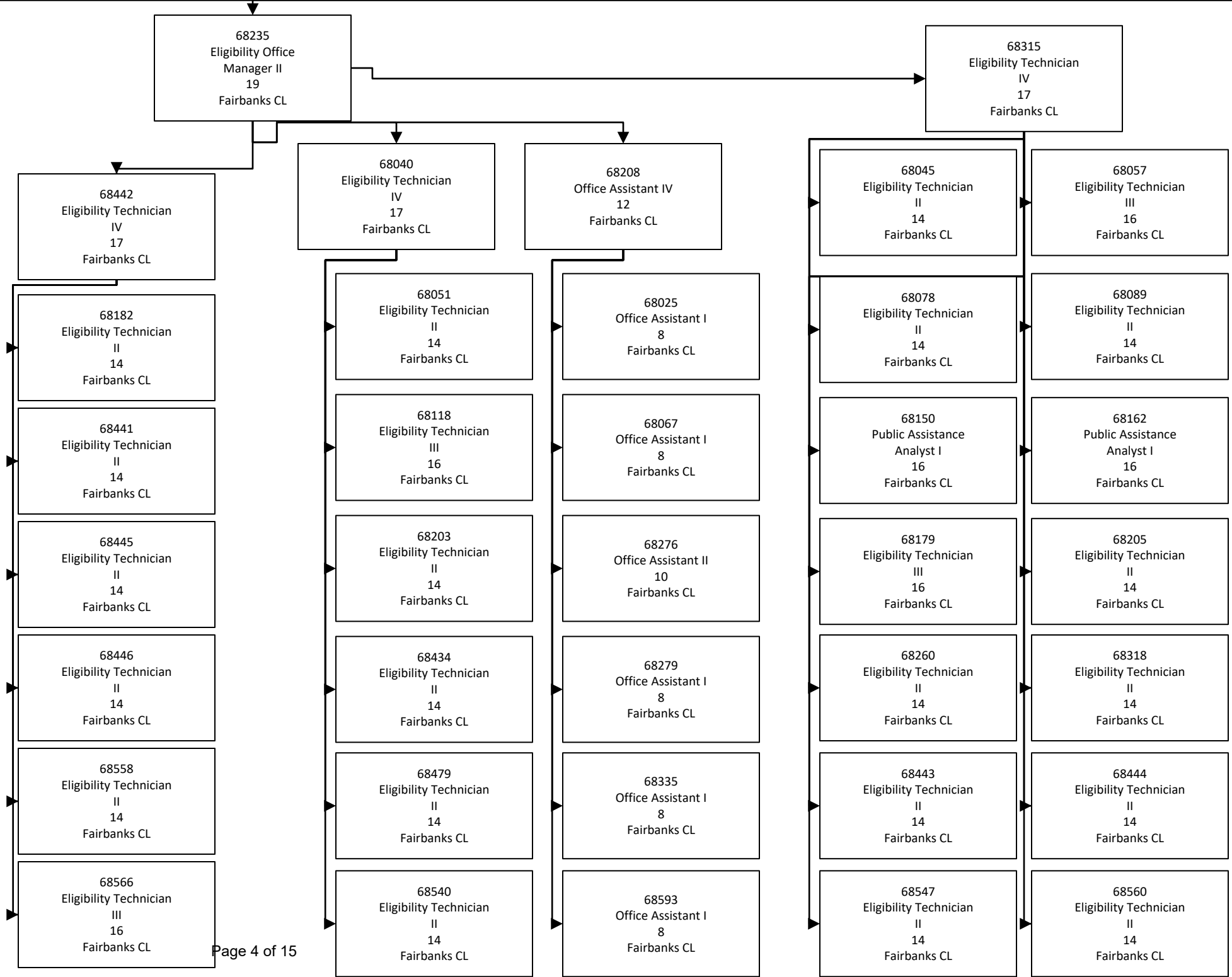
68674
Eligibility Technician
II
14
Wasilla CL

68662
Office Assistant II
10
Wasilla CL

68664
Office Assistant II
10
Wasilla CL

68665
Office Assistant II
10
Wasilla CL





DEPARTMENT OF HEALTH AND SOCIAL SERVICES
 Division of Public Assistance
 Public Assistance Field Services 236

68612
 Eligibility Office
 Manager II
 19
 Anchorage CL

68391
 Eligibility Technician
 II
 14
 Nome CL

68034
 Eligibility Technician
 II
 14
 Nome CL

68449
 Eligibility Technician
 II
 14
 Nome CL

68619
 Office Assistant I
 8
 Anchorage CL

68265
 Office Assistant IV
 12
 Anchorage CL

68600
 Eligibility Technician
 IV
 17
 Anchorage CL

68507
 Eligibility Technician
 IV
 17
 Anchorage CL

68689
 Office Assistant II
 10
 Anchorage CL

64939
 Office Assistant I
 8
 Anchorage CL

68060
 Eligibility Technician
 III
 16
 Anchorage CL

64938
 Eligibility Technician
 II
 14
 Anchorage CL

68229
 Eligibility Technician
 II
 14
 Anchorage CL

68202
 Eligibility Technician
 II
 14
 Anchorage CL

68107
 Office Assistant II
 10
 Anchorage CL

68117
 Eligibility Technician
 III
 16
 Anchorage CL

68177
 Eligibility Technician
 II
 14
 Anchorage CL

68348
 Eligibility Technician
 II
 14
 Anchorage CL

68433
 Eligibility Technician
 III
 16
 Anchorage CL

68248
 Office Assistant I
 8
 Anchorage CL

68259
 Eligibility Technician
 II
 14
 Anchorage CL

68305
 Eligibility Technician
 II
 14
 Anchorage CL

68471
 Eligibility Technician
 II
 14
 Anchorage CL

68498
 Eligibility Technician
 II
 14
 Anchorage CL

68268
 Office Assistant I
 8
 Anchorage CL

68310
 Eligibility Technician
 II
 14
 Anchorage CL

68418
 Eligibility Technician
 II
 14
 Anchorage CL

68510
 Eligibility Technician
 II
 14
 Anchorage CL

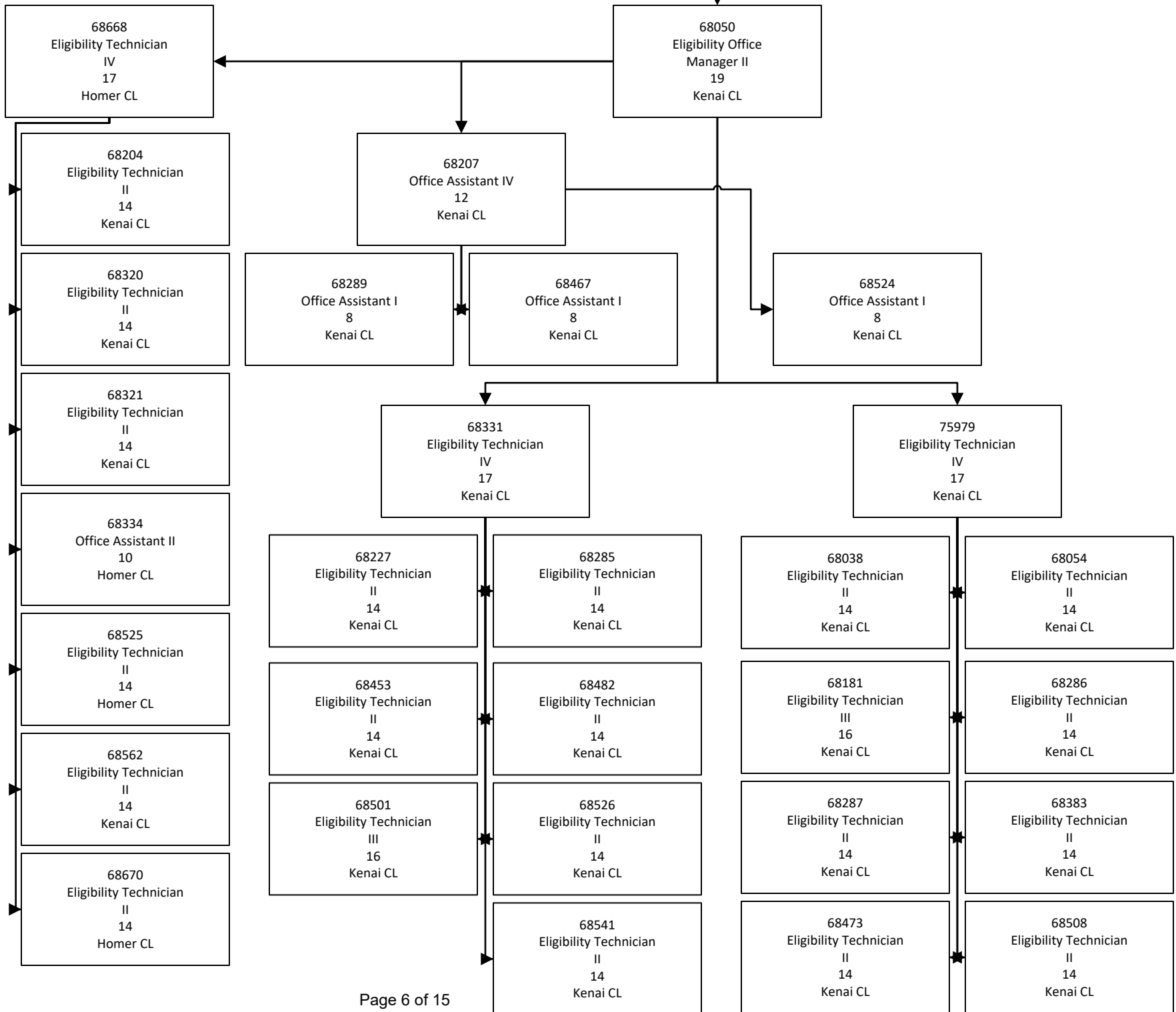
68608
 Eligibility Technician
 II
 14
 Anchorage CL

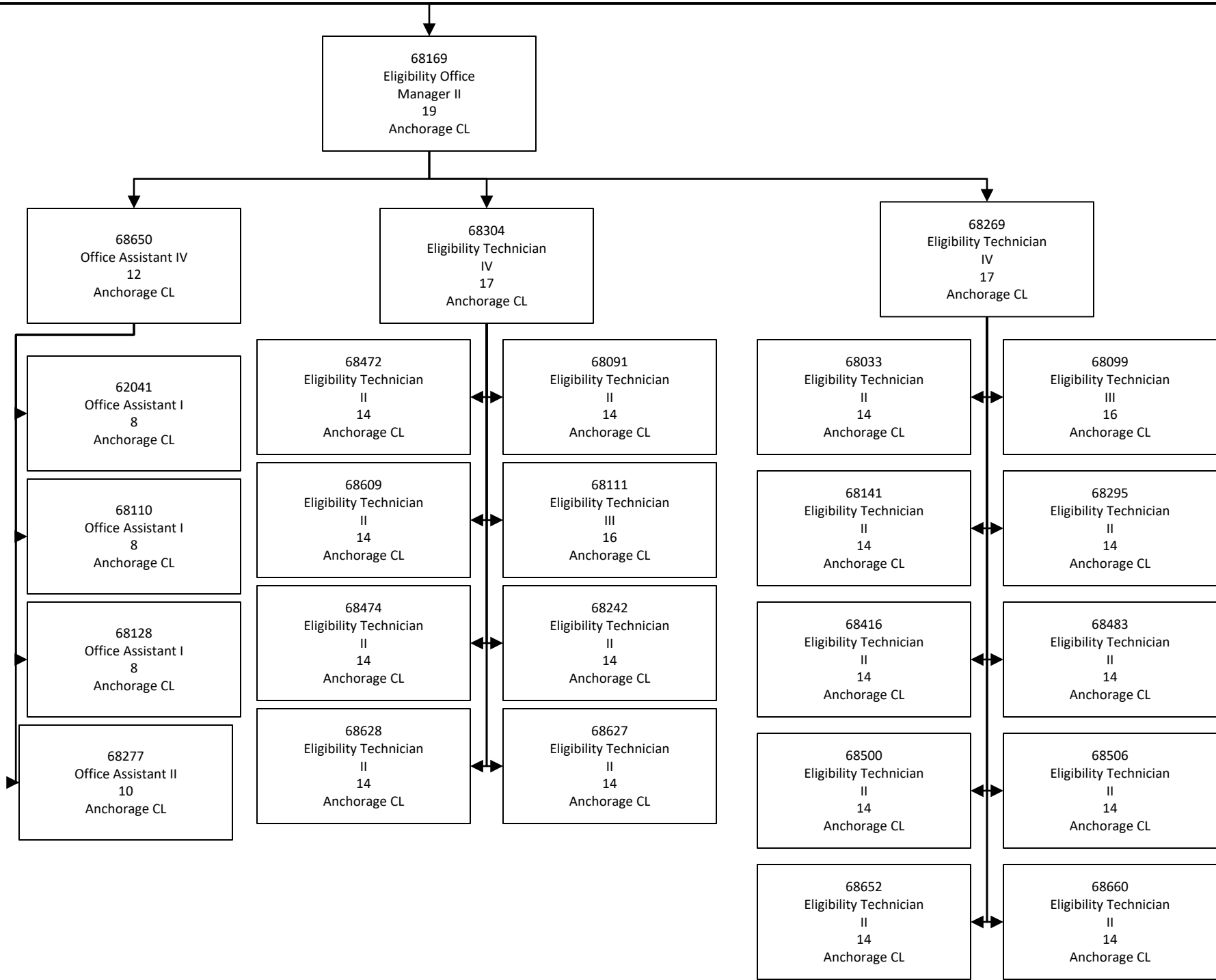
68280
 Office Assistant II
 10
 Nome CL

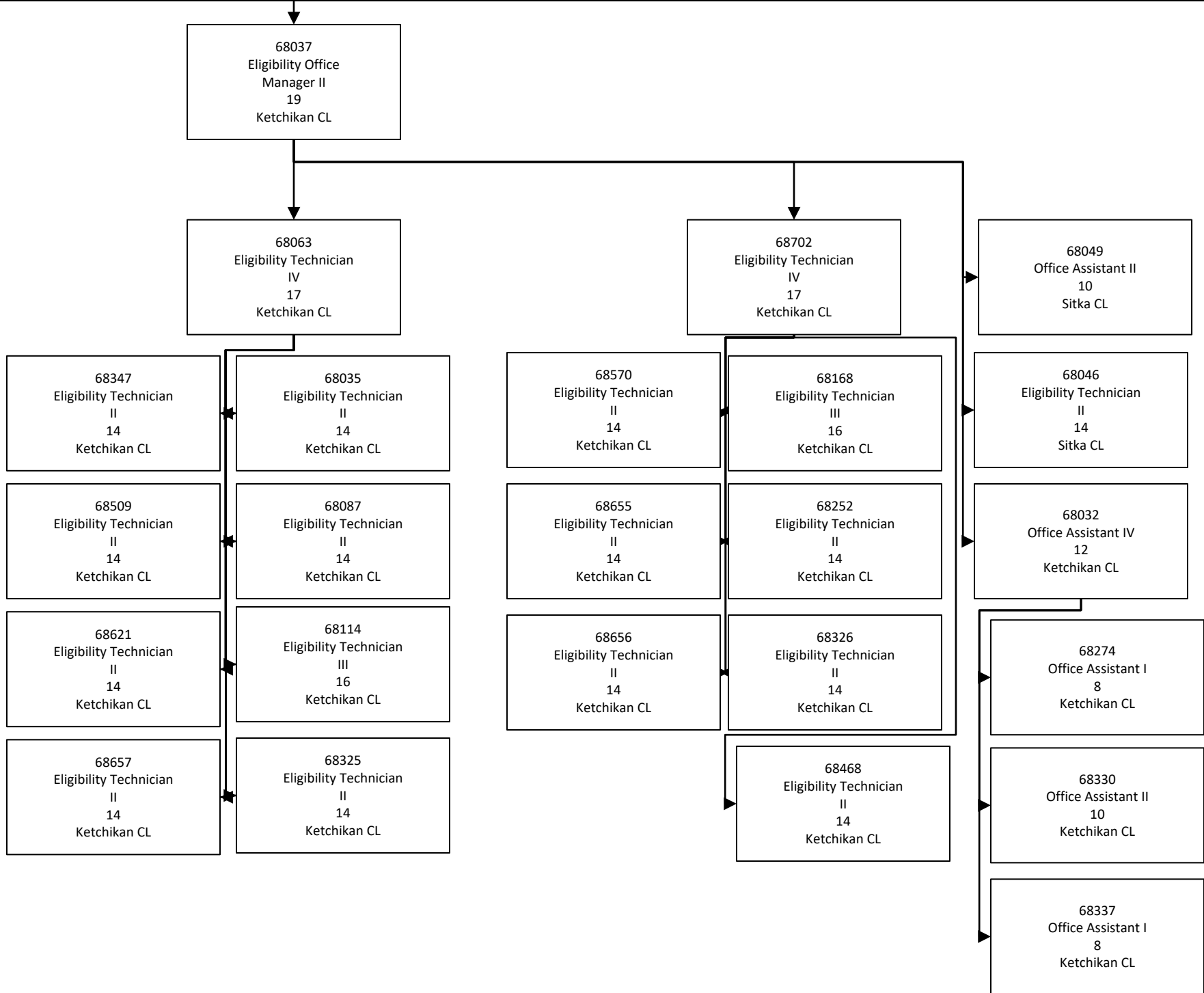
68477
 Eligibility Technician
 II
 14
 Anchorage CL

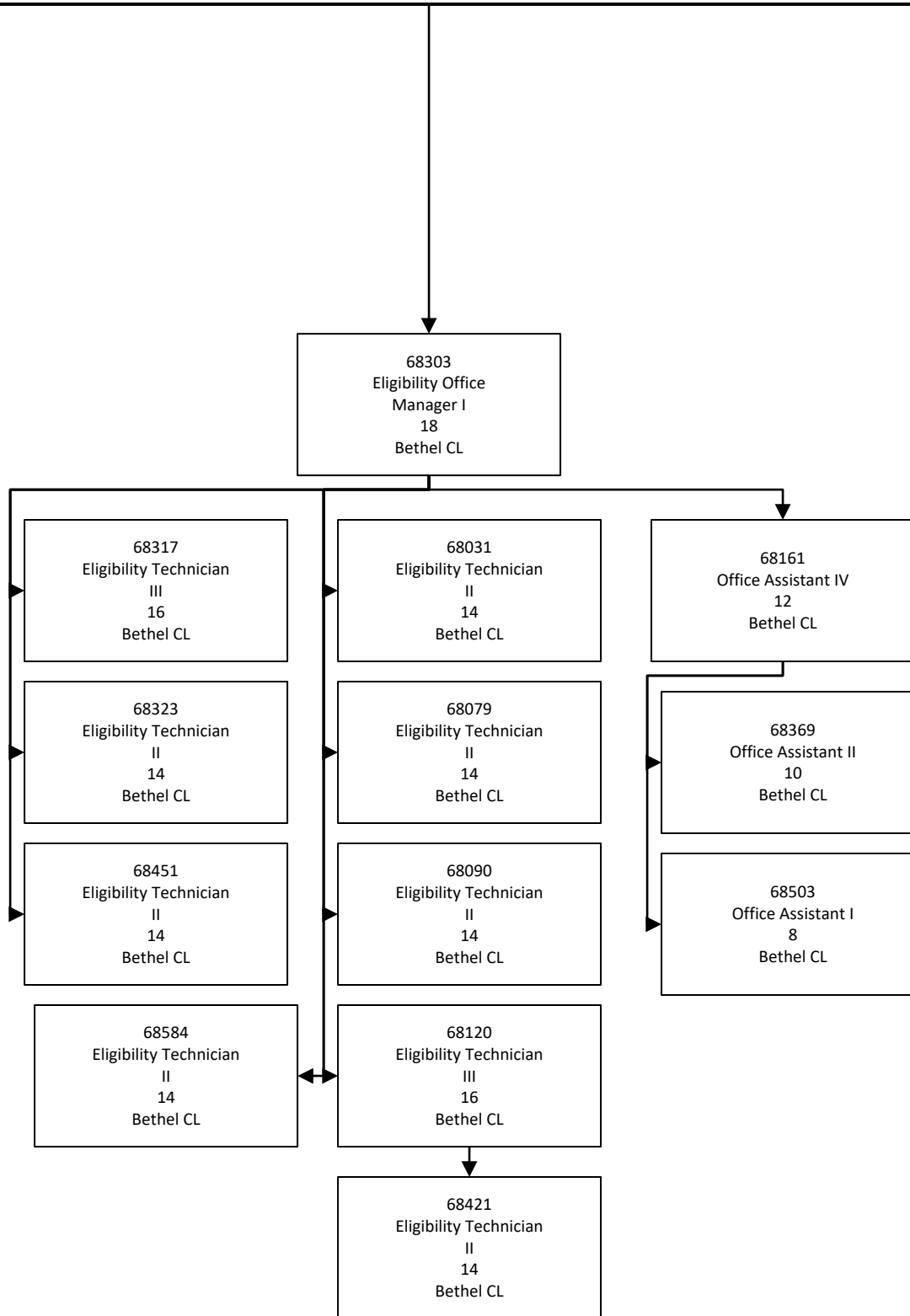
68516
 Eligibility Technician
 II
 14
 Anchorage CL

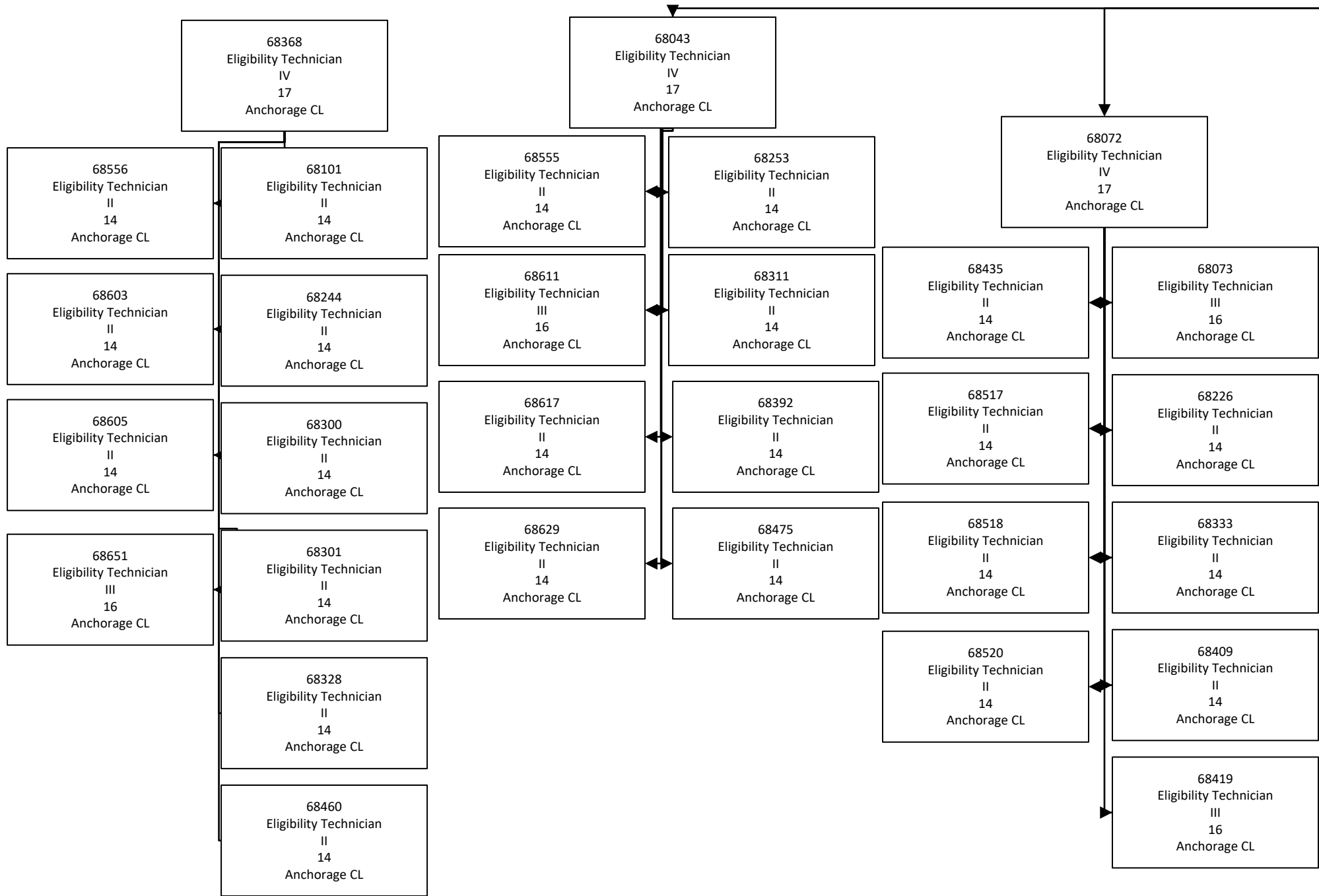
68339
 Office Assistant III
 11
 Anchorage CL

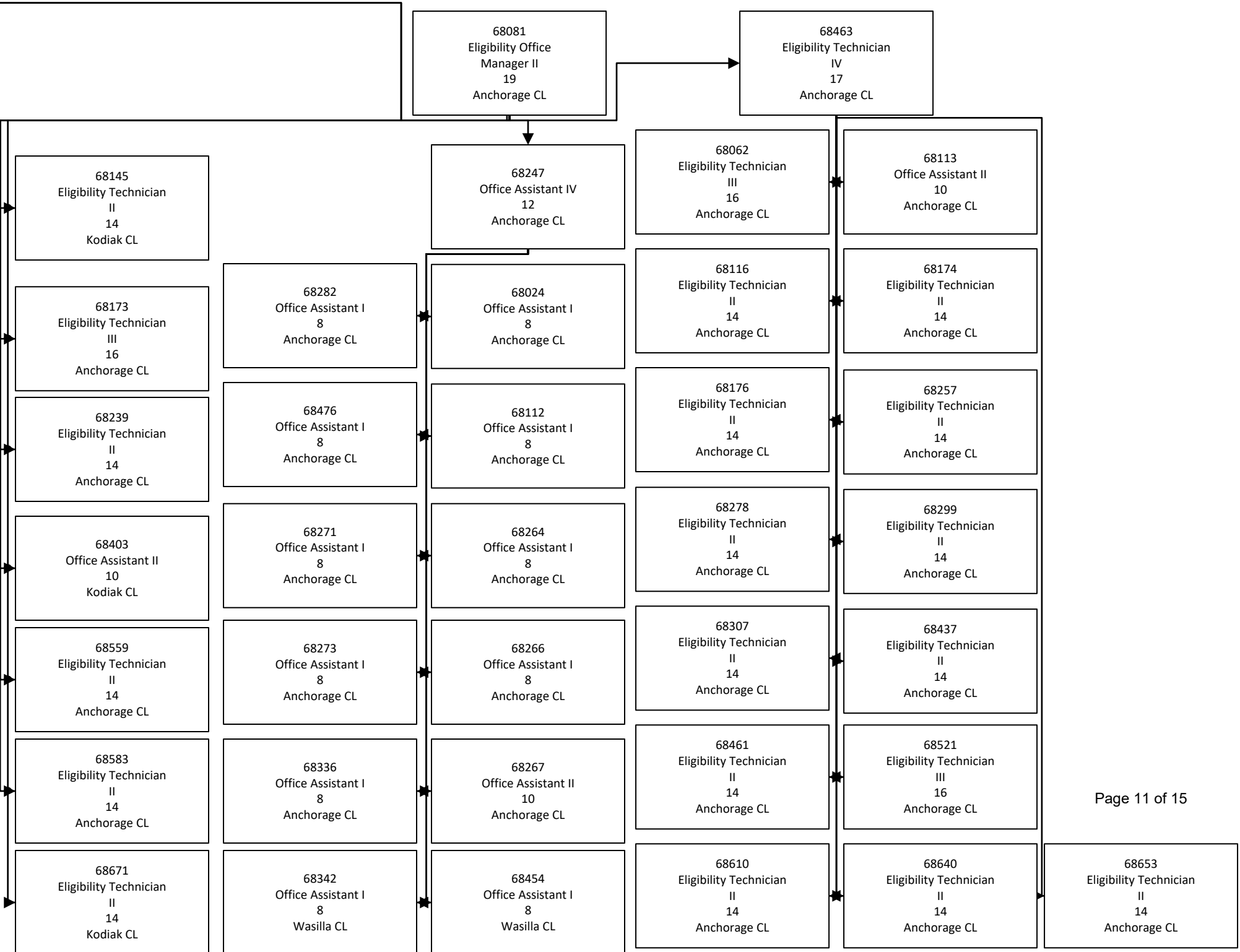


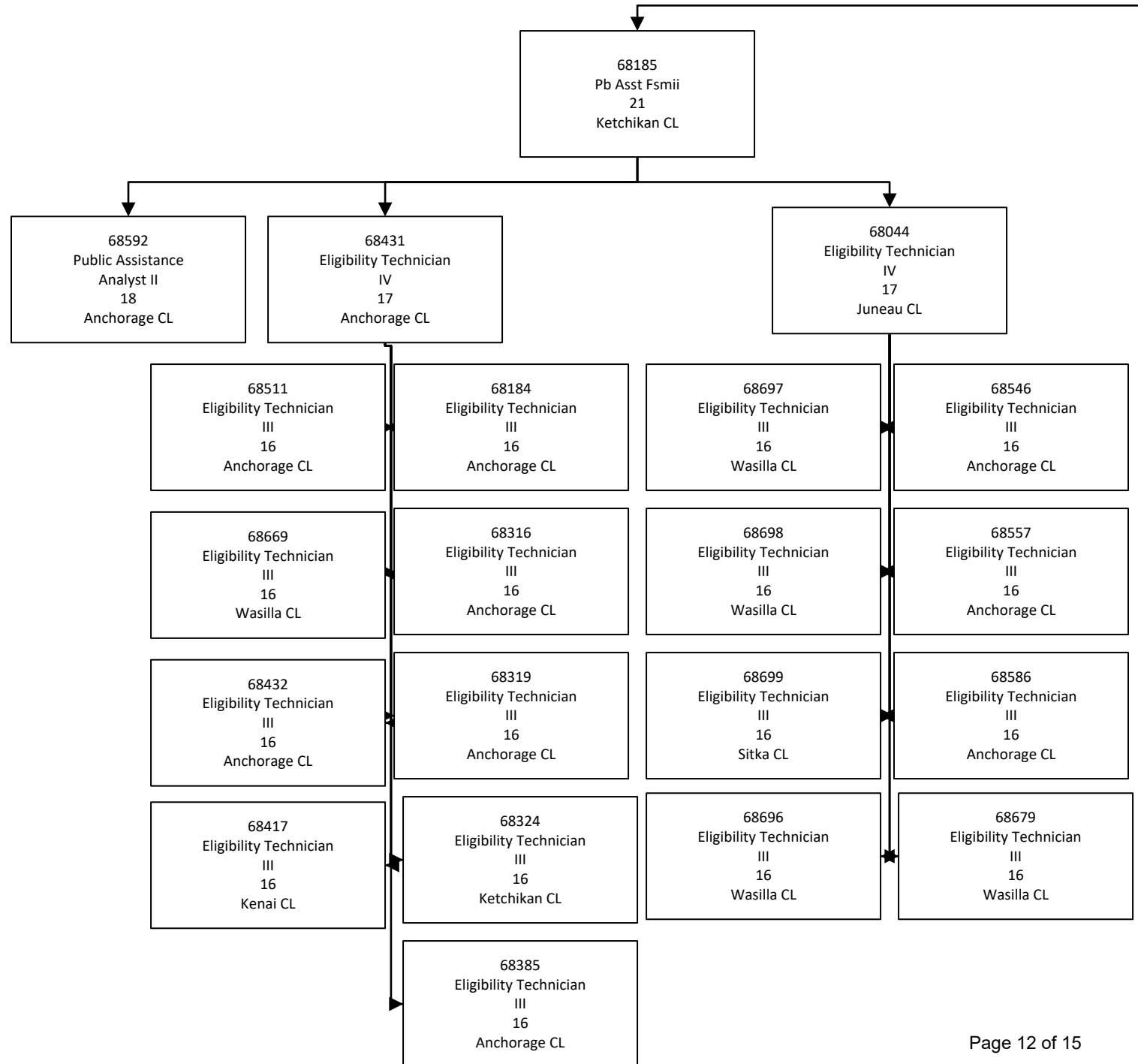


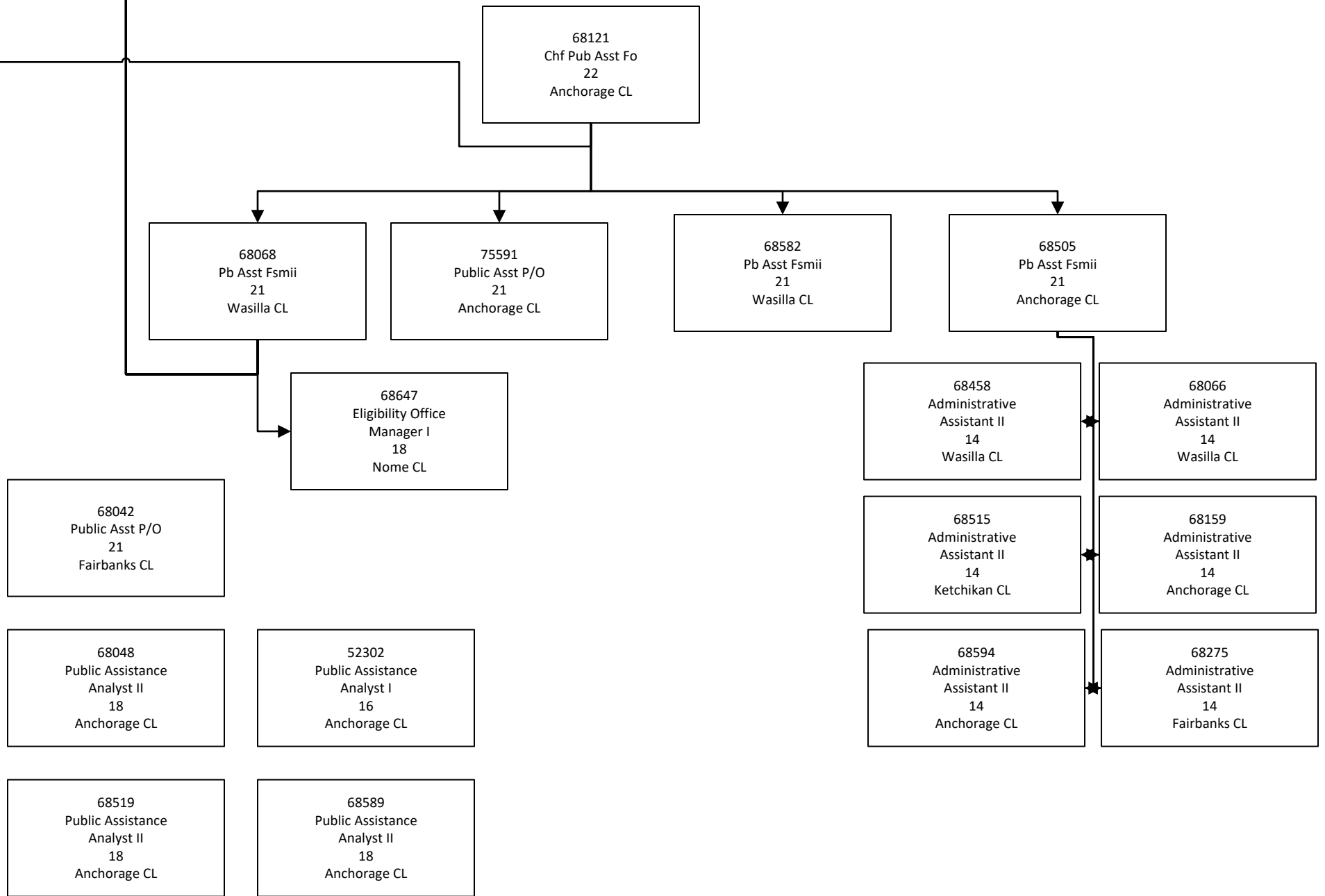


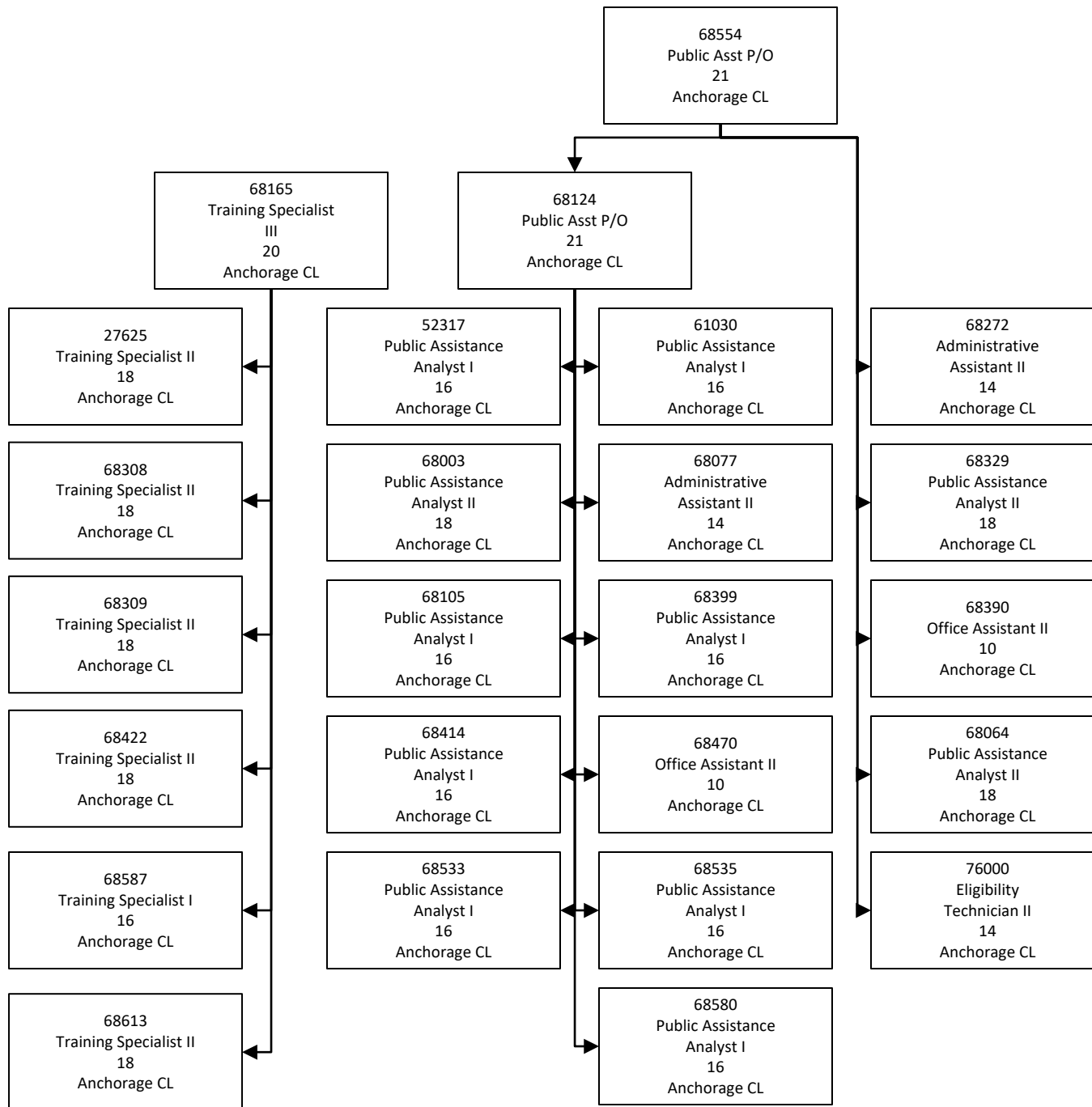












68041
Public Asst P/O
21
Wasilla CL

68646
Emp Svc Tech II
15
Wasilla CL

75530
Emp Svc Techiii
16
Wasilla CL

75977
Emp Svc Techiii
16
Kenai CL

75234
Emp Svc Techiii
16
Fairbanks CL

75202
Emp Svc Tech II
15
Wasilla CL

58711
Emp Svc Tech II
15
Kenai CL

75972
Emp Svc Tech II
15
Nome CL

213046
Emp Svc Tech II
15
Fairbanks CL

75205
Emp Svc Tech II
15
Wasilla CL

75421
Emp Svc Tech II
15
Kenai CL

75973
Emp Svc Tech II
15
Nome CL

68387
Emp Svc Tech II
15
Fairbanks CL

75268
Emp Svc Tech II
15
Wasilla CL

75434
Emp Svc Tech II
15
Ketchikan CL

76029
Emp Svc Tech II
15
Fairbanks CL

68548
Emp Svc Tech II
15
Fairbanks CL

75365
Emp Svc Tech II
15
Wasilla CL

75980
Emp Svc Tech II
15
Kenai CL

75974
Emp Svc Tech II
15
Fairbanks CL

68568
Emp Svc Tech II
15
Fairbanks CL

75789
Emp Svc Tech II
15
Wasilla CL

75981
Emp Svc Tech II
15
Kenai CL

75971
Emp Svc Tech II
15
Nome CL

75216
Emp Svc Tech II
15
Fairbanks CL

75976
Emp Svc Tech II
15
Wasilla CL

75982
Emp Svc Tech II
15
Kenai CL

75830
Emp Svc Tech II
15
Fairbanks CL

75999
Emp Svc Tech II
15
Wasilla CL

75983
Emp Svc Tech II
15
Homer CL