

DEPARTMENT OF HEALTH AND SOCIAL SERVICES
 Division of Public Assistance
 Public Assistance Field Services 236

68180
 Eligibility Technician
 IV
 17
 Wasilla CL

68700
 Eligibility Technician
 IV
 17
 Wasilla CL

68630
 Eligibility Technician
 III
 16
 Wasilla CL

68098
 Eligibility Technician
 IV
 17
 Wasilla CL

68172
 Eligibility Technician
 IV
 17
 Wasilla CL

68171
 Eligibility Technician
 III
 16
 Wasilla CL

68228
 Eligibility Technician
 II
 14
 Wasilla CL

68100
 Eligibility Technician
 II
 14
 Wasilla CL

68139
 Eligibility Technician
 II
 14
 Wasilla CL

68106
 Eligibility Technician
 III
 16
 Wasilla CL

68375
 Eligibility Technician
 II
 14
 Wasilla CL

68251
 Eligibility Technician
 II
 14
 Wasilla CL

68322
 Eligibility Technician
 II
 14
 Wasilla CL

68225
 Eligibility Technician
 II
 14
 Wasilla CL

68284
 Eligibility Technician
 II
 14
 Wasilla CL

68436
 Eligibility Technician
 II
 14
 Wasilla CL

68465
 Eligibility Technician
 II
 14
 Wasilla CL

68377
 Eligibility Technician
 II
 14
 Wasilla CL

68481
 Eligibility Technician
 II
 14
 Wasilla CL

68378
 Eligibility Technician
 III
 16
 Wasilla CL

68424
 Eligibility Technician
 II
 14
 Wasilla CL

68632
 Eligibility Technician
 II
 14
 Wasilla CL

68641
 Eligibility Technician
 II
 14
 Wasilla CL

68565
 Eligibility Technician
 II
 14
 Wasilla CL

68571
 Eligibility Technician
 II
 14
 Wasilla CL

68457
 Eligibility Technician
 II
 14
 Wasilla CL

68484
 Eligibility Technician
 II
 14
 Wasilla CL

68672
 Eligibility Technician
 II
 14
 Wasilla CL

68606
 Eligibility Technician
 II
 14
 Wasilla CL

68618
 Eligibility Technician
 II
 14
 Wasilla CL

68642
 Eligibility Technician
 II
 14
 Wasilla CL

68676
 Eligibility Technician
 II
 14
 Wasilla CL

68666
 Eligibility Technician
 II
 14
 Wasilla CL

68384
Eligibility Office
Manager II
19
Wasilla CL

68201
Eligibility Technician
IV
17
Wasilla CL

68366
Office Assistant IV
12
Wasilla CL

68667
Eligibility Technician
IV
17
Wasilla CL

68502
Eligibility Technician
II
14
Wasilla CL

68512
Eligibility Technician
II
14
Wasilla CL

68109
Office Assistant II
10
Wasilla CL

68143
Office Assistant I
8
Wasilla CL

68084
Eligibility Technician
III
16
Wasilla CL

68175
Eligibility Technician
II
14
Wasilla CL

68513
Eligibility Technician
II
14
Wasilla CL

68527
Eligibility Technician
II
14
Wasilla CL

68237
Office Assistant I
8
Wasilla CL

68238
Office Assistant I
8
Wasilla CL

68438
Eligibility Technician
II
14
Wasilla CL

68464
Eligibility Technician
II
14
Wasilla CL

68528
Eligibility Technician
II
14
Wasilla CL

68563
Eligibility Technician
II
14
Wasilla CL

68341
Office Assistant II
10
Wasilla CL

68430
Office Assistant I
8
Wasilla CL

68680
Eligibility Technician
II
14
Wasilla CL

68469
Eligibility Technician
II
14
Wasilla CL

68673
Eligibility Technician
II
14
Wasilla CL

68675
Eligibility Technician
II
14
Wasilla CL

68459
Office Assistant I
8
Wasilla CL

68537
Office Assistant I
8
Wasilla CL

68564
Eligibility Technician
II
14
Wasilla CL

68585
Eligibility Technician
II
14
Wasilla CL

68678
Eligibility Technician
II
14
Wasilla CL

68681
Eligibility Technician
III
16
Wasilla CL

68633
Office Assistant I
8
Wasilla CL

68649
Office Assistant I
8
Wasilla CL

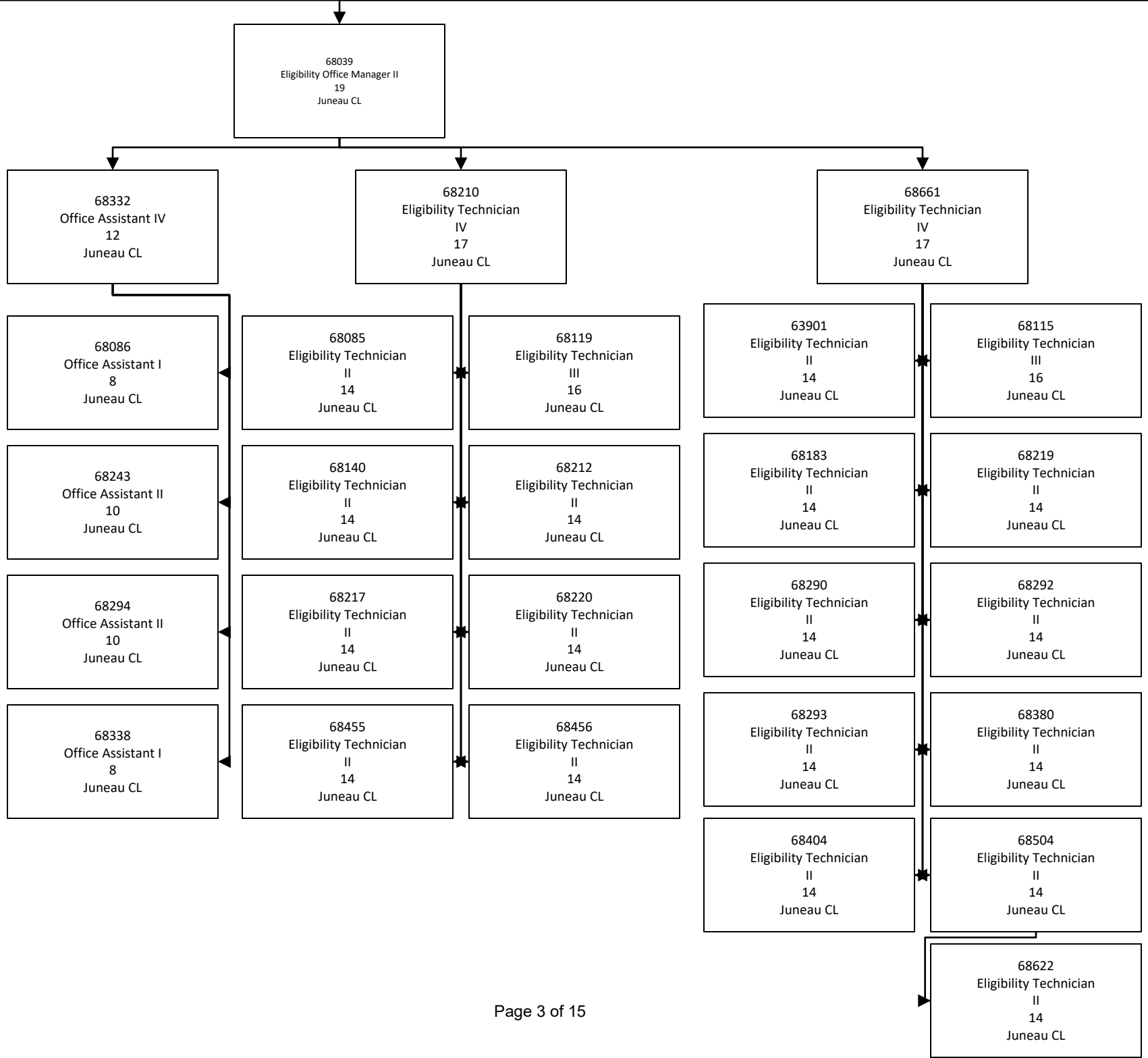
68663
Eligibility Technician
II
14
Wasilla CL

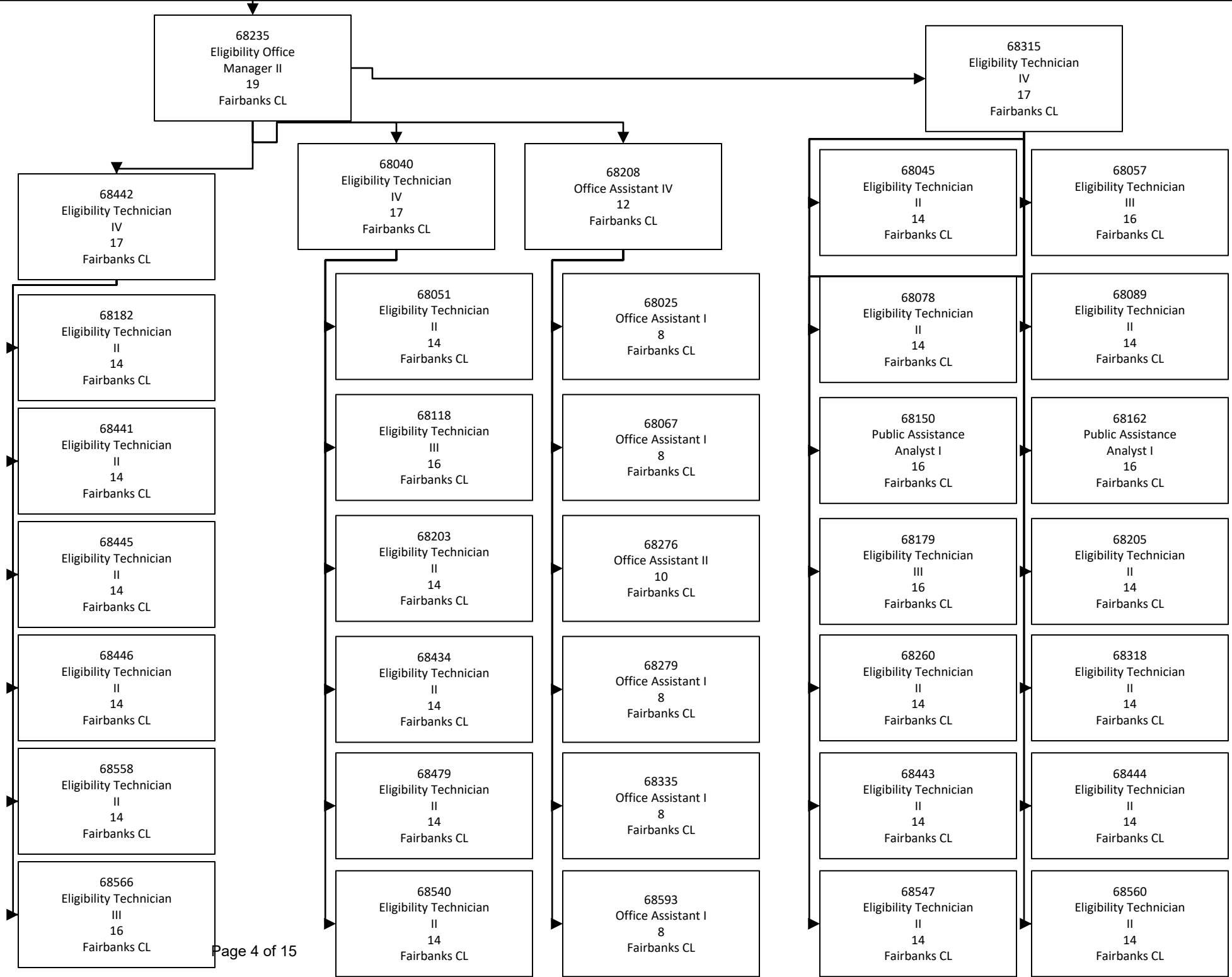
68674
Eligibility Technician
II
14
Wasilla CL

68662
Office Assistant II
10
Wasilla CL

68664
Office Assistant II
10
Wasilla CL

68665
Office Assistant II
10
Wasilla CL





DEPARTMENT OF HEALTH AND SOCIAL SERVICES
 Division of Public Assistance
 Public Assistance Field Services 236

68612
 Eligibility Office
 Manager II
 19
 Anchorage CL

68391
 Eligibility Technician
 II
 14
 Nome CL

68034
 Eligibility Technician
 II
 14
 Nome CL

68449
 Eligibility Technician
 II
 14
 Nome CL

68619
 Office Assistant I
 8
 Anchorage CL

68265
 Office Assistant IV
 12
 Anchorage CL

68600
 Eligibility Technician
 IV
 17
 Anchorage CL

68507
 Eligibility Technician
 IV
 17
 Anchorage CL

68689
 Office Assistant II
 10
 Anchorage CL

64939
 Office Assistant I
 8
 Anchorage CL

68060
 Eligibility Technician
 III
 16
 Anchorage CL

64938
 Eligibility Technician
 II
 14
 Anchorage CL

68229
 Eligibility Technician
 II
 14
 Anchorage CL

68202
 Eligibility Technician
 II
 14
 Anchorage CL

68107
 Office Assistant II
 10
 Anchorage CL

68117
 Eligibility Technician
 III
 16
 Anchorage CL

68177
 Eligibility Technician
 II
 14
 Anchorage CL

68348
 Eligibility Technician
 II
 14
 Anchorage CL

68433
 Eligibility Technician
 III
 16
 Anchorage CL

68248
 Office Assistant I
 8
 Anchorage CL

68259
 Eligibility Technician
 II
 14
 Anchorage CL

68305
 Eligibility Technician
 II
 14
 Anchorage CL

68471
 Eligibility Technician
 II
 14
 Anchorage CL

68498
 Eligibility Technician
 II
 14
 Anchorage CL

68268
 Office Assistant I
 8
 Anchorage CL

68310
 Eligibility Technician
 II
 14
 Anchorage CL

68418
 Eligibility Technician
 II
 14
 Anchorage CL

68510
 Eligibility Technician
 II
 14
 Anchorage CL

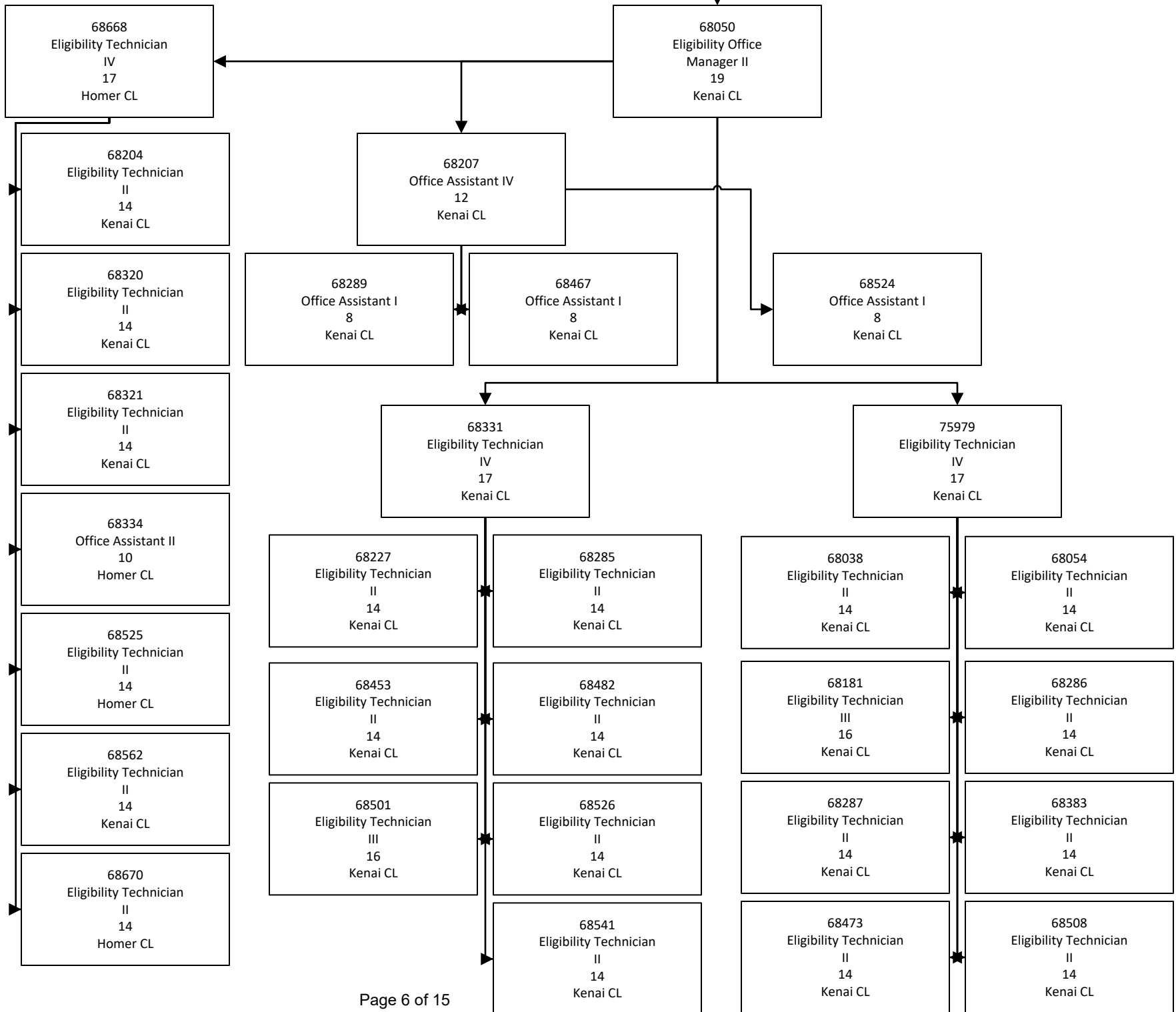
68608
 Eligibility Technician
 II
 14
 Anchorage CL

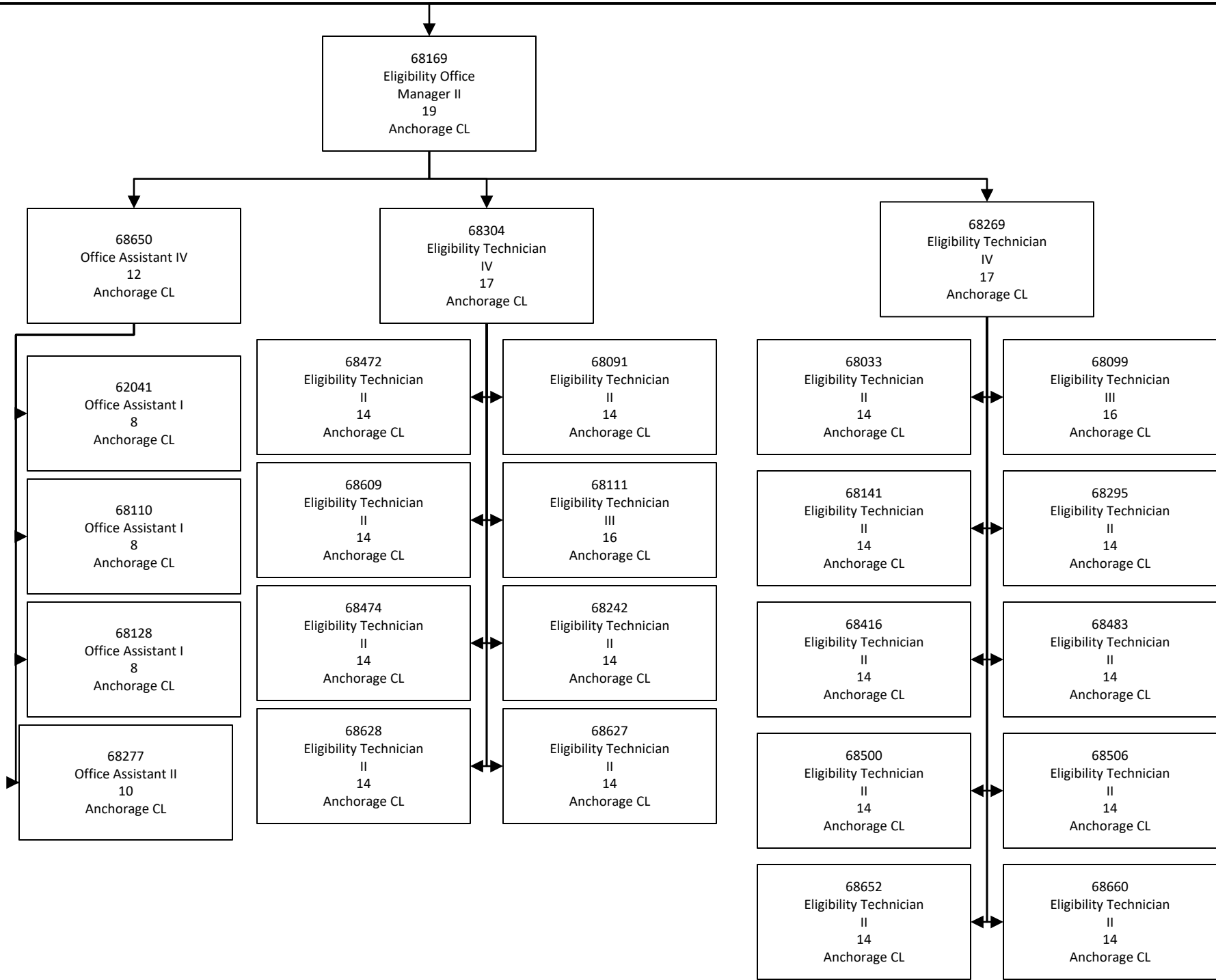
68280
 Office Assistant II
 10
 Nome CL

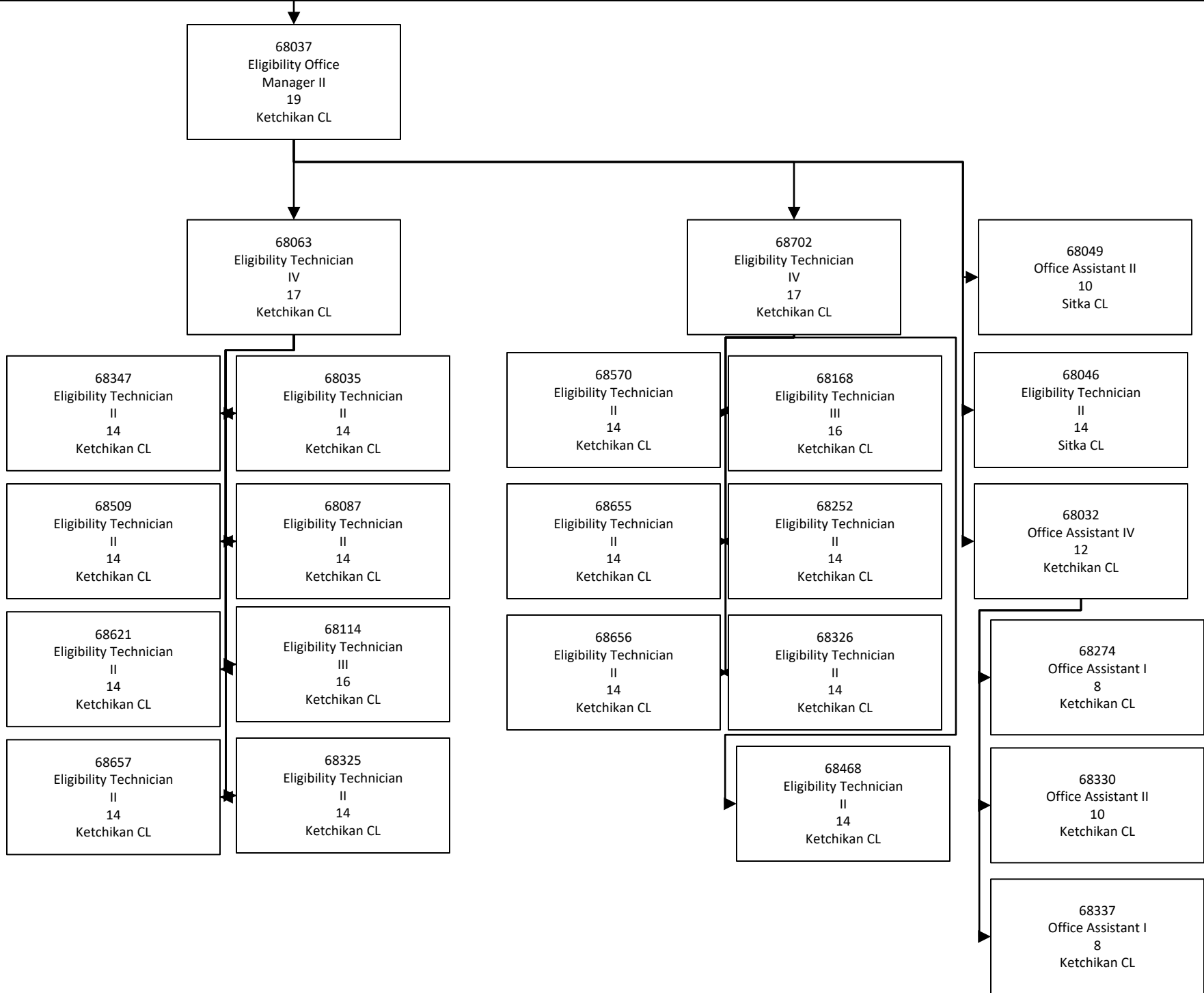
68477
 Eligibility Technician
 II
 14
 Anchorage CL

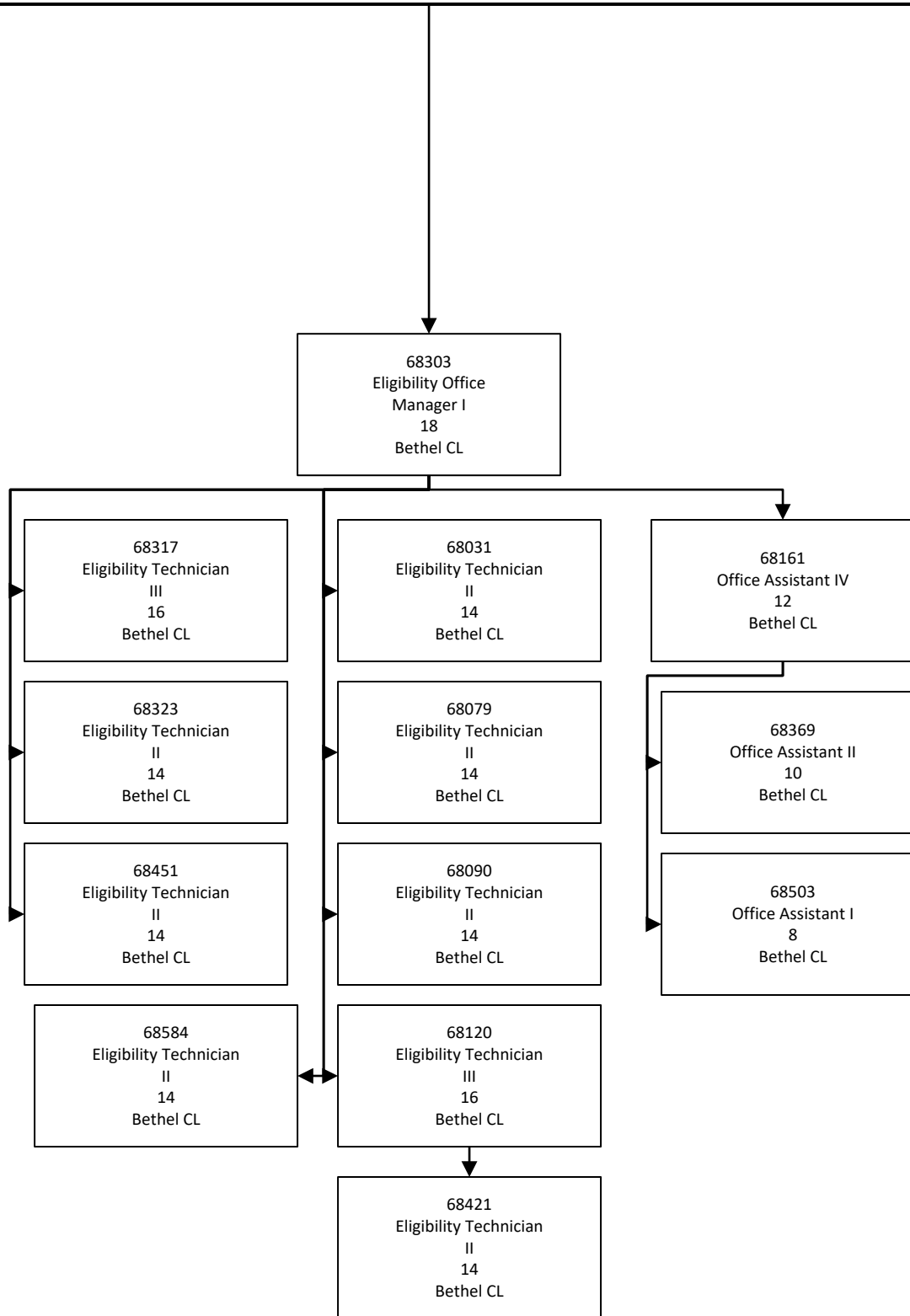
68516
 Eligibility Technician
 II
 14
 Anchorage CL

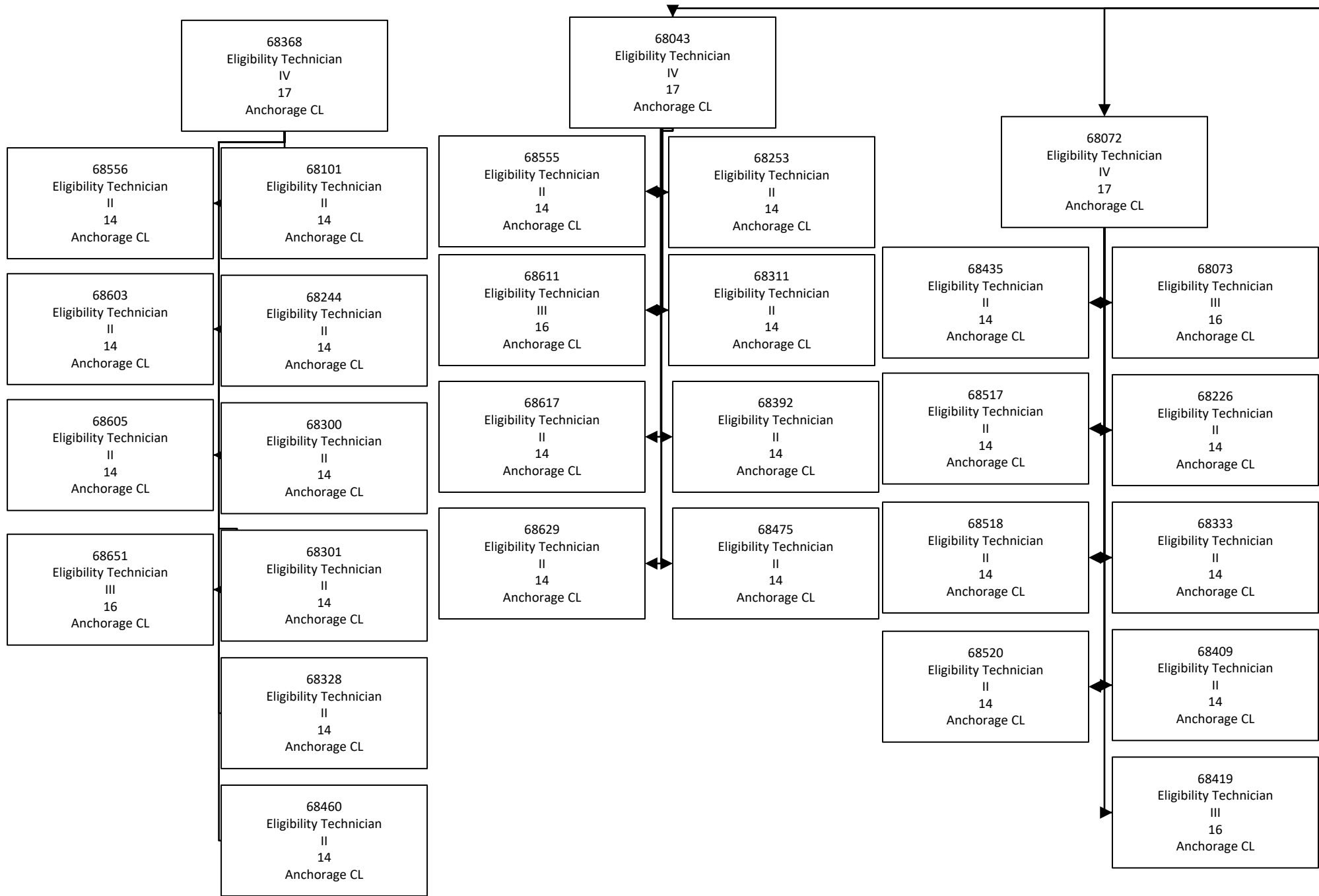
68339
 Office Assistant III
 11
 Anchorage CL

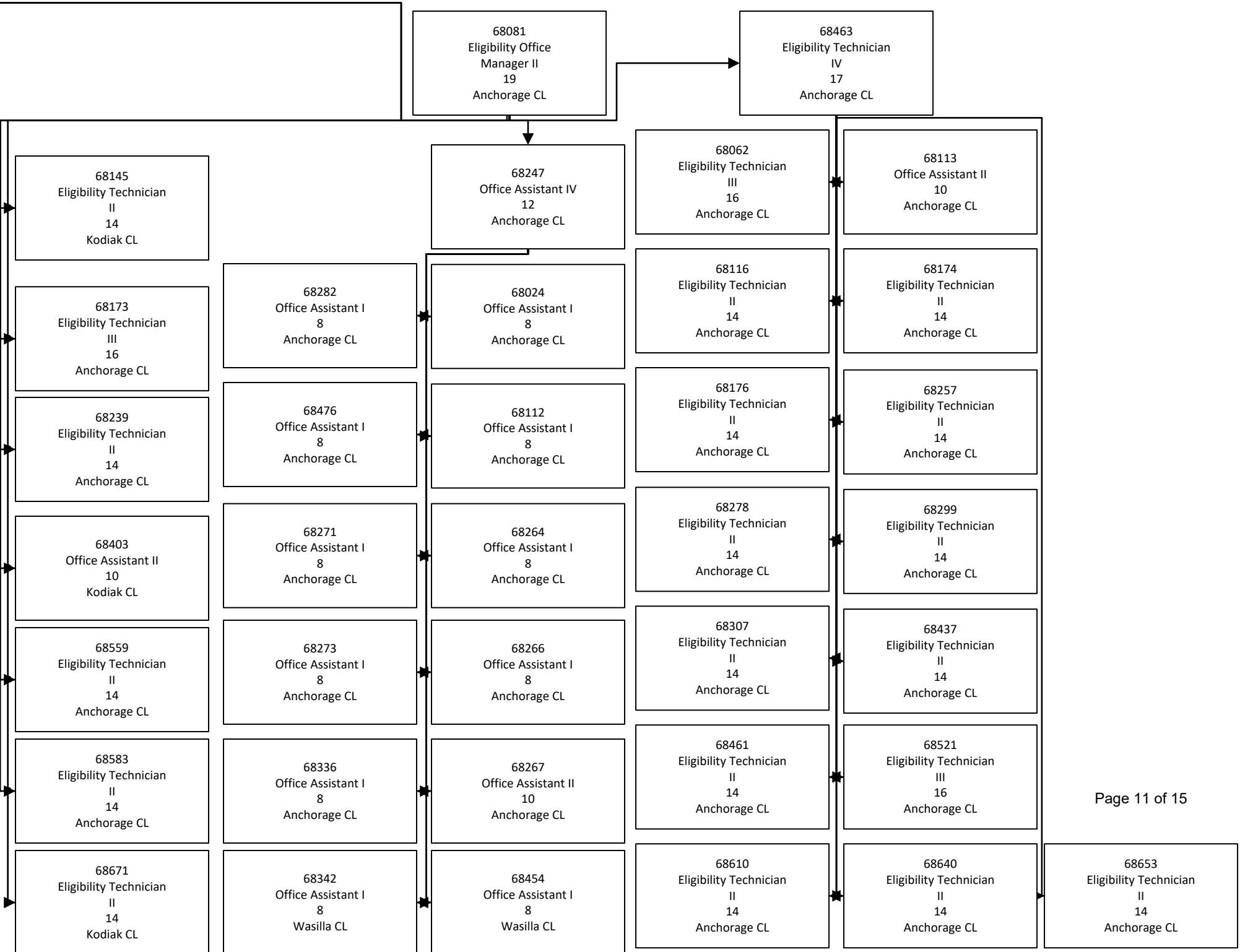


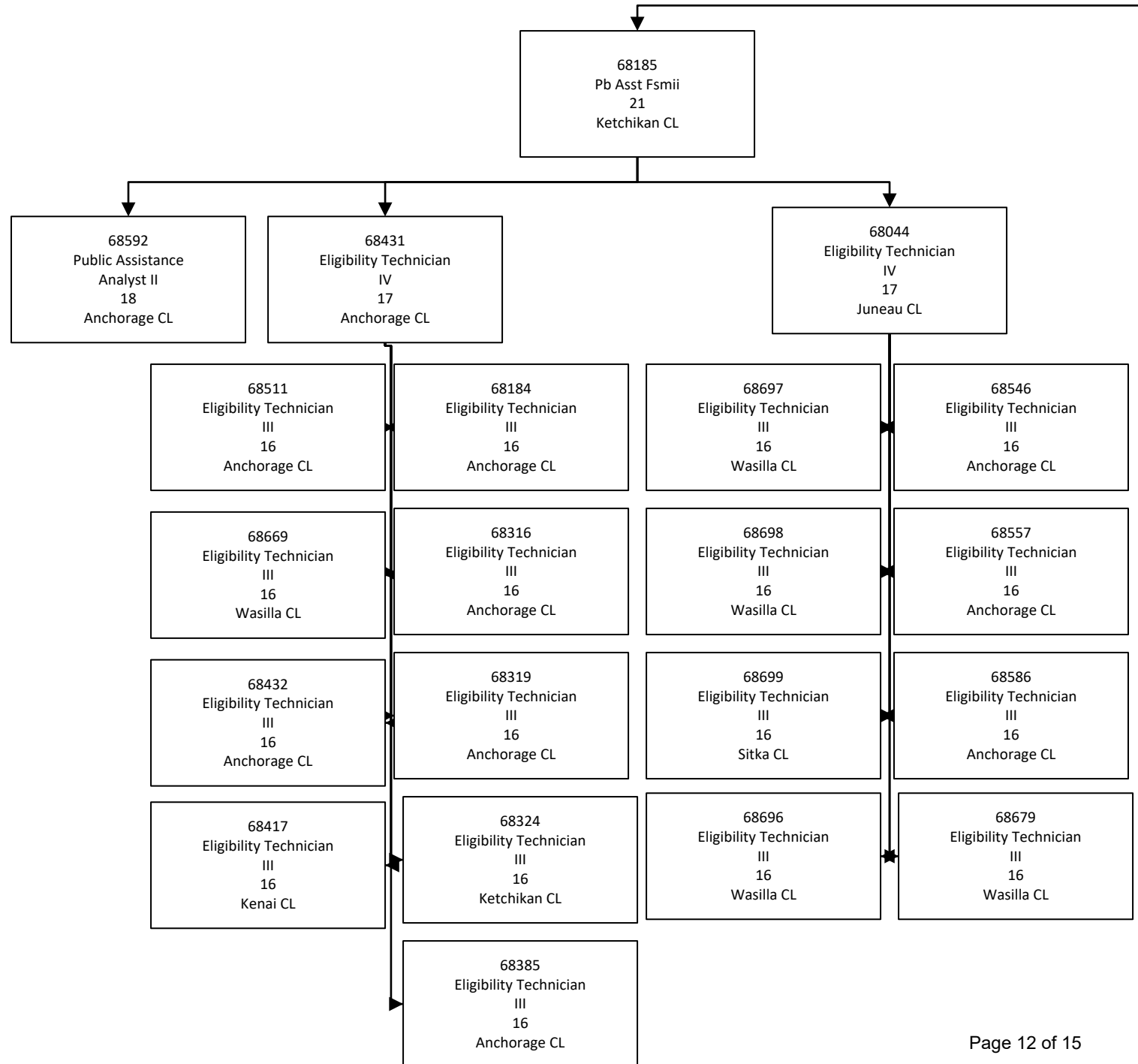


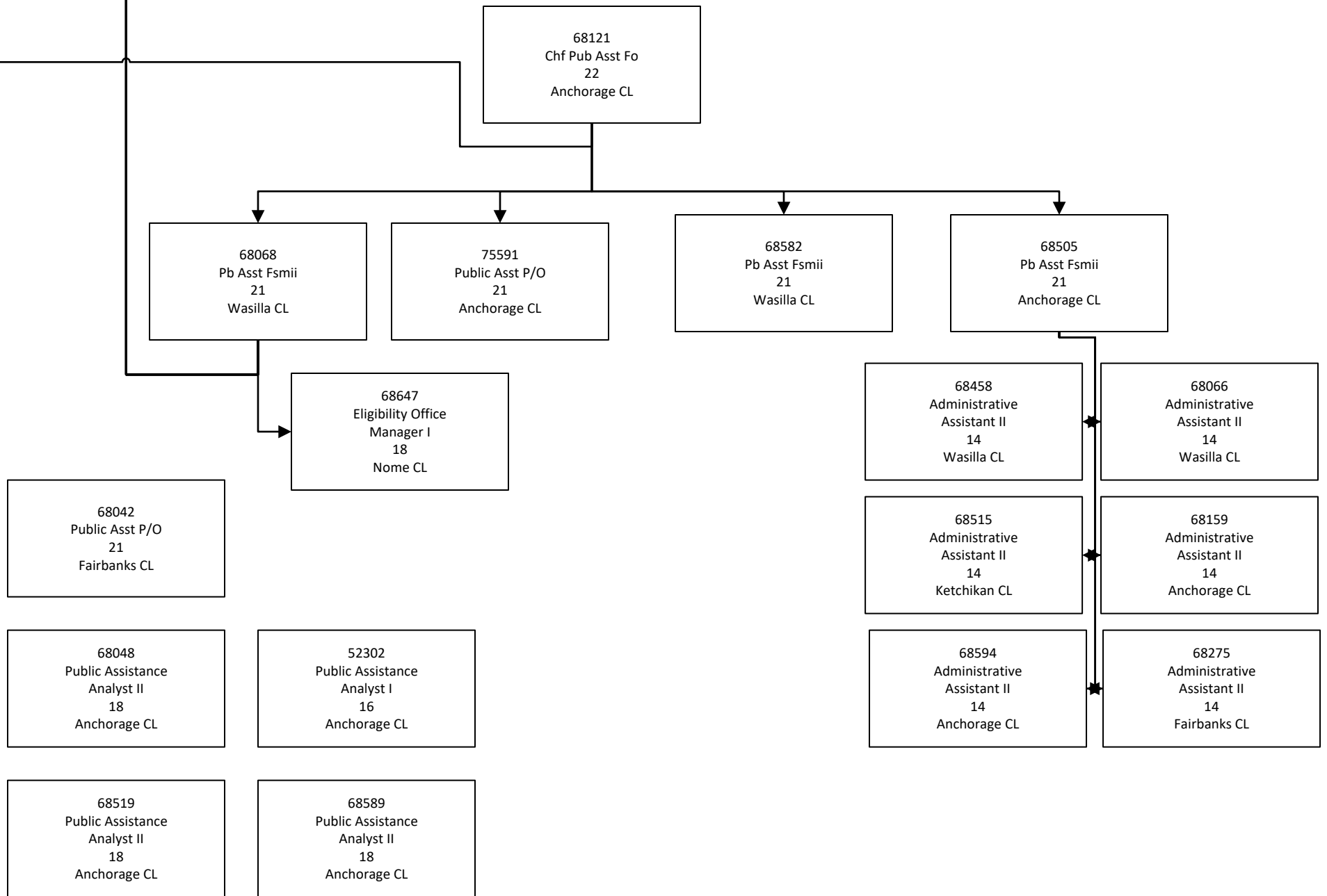


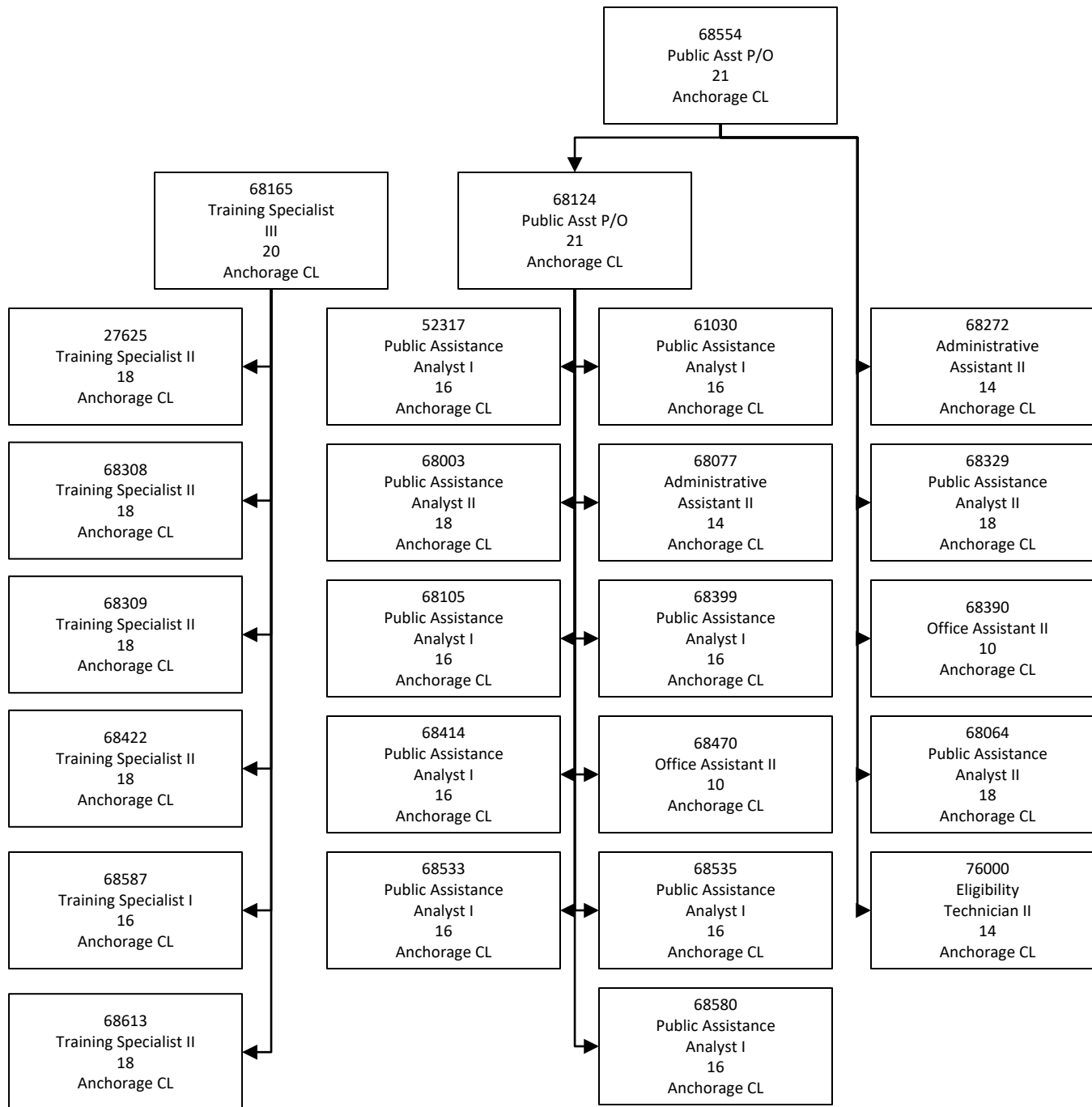












68041
Public Asst P/O
21
Wasilla CL

68646
Emp Svc Tech II
15
Wasilla CL

75530
Emp Svc Techiii
16
Wasilla CL

75977
Emp Svc Techiii
16
Kenai CL

75234
Emp Svc Techiii
16
Fairbanks CL

75202
Emp Svc Tech II
15
Wasilla CL

58711
Emp Svc Tech II
15
Kenai CL

75972
Emp Svc Tech II
15
Nome CL

213046
Emp Svc Tech II
15
Fairbanks CL

75205
Emp Svc Tech II
15
Wasilla CL

75421
Emp Svc Tech II
15
Kenai CL

75973
Emp Svc Tech II
15
Nome CL

68387
Emp Svc Tech II
15
Fairbanks CL

75268
Emp Svc Tech II
15
Wasilla CL

75434
Emp Svc Tech II
15
Ketchikan CL

76029
Emp Svc Tech II
15
Fairbanks CL

68548
Emp Svc Tech II
15
Fairbanks CL

75365
Emp Svc Tech II
15
Wasilla CL

75980
Emp Svc Tech II
15
Kenai CL

75974
Emp Svc Tech II
15
Fairbanks CL

68568
Emp Svc Tech II
15
Fairbanks CL

75789
Emp Svc Tech II
15
Wasilla CL

75981
Emp Svc Tech II
15
Kenai CL

75971
Emp Svc Tech II
15
Nome CL

75216
Emp Svc Tech II
15
Fairbanks CL

75976
Emp Svc Tech II
15
Wasilla CL

75982
Emp Svc Tech II
15
Kenai CL

75830
Emp Svc Tech II
15
Fairbanks CL

75999
Emp Svc Tech II
15
Wasilla CL

75983
Emp Svc Tech II
15
Homer CL