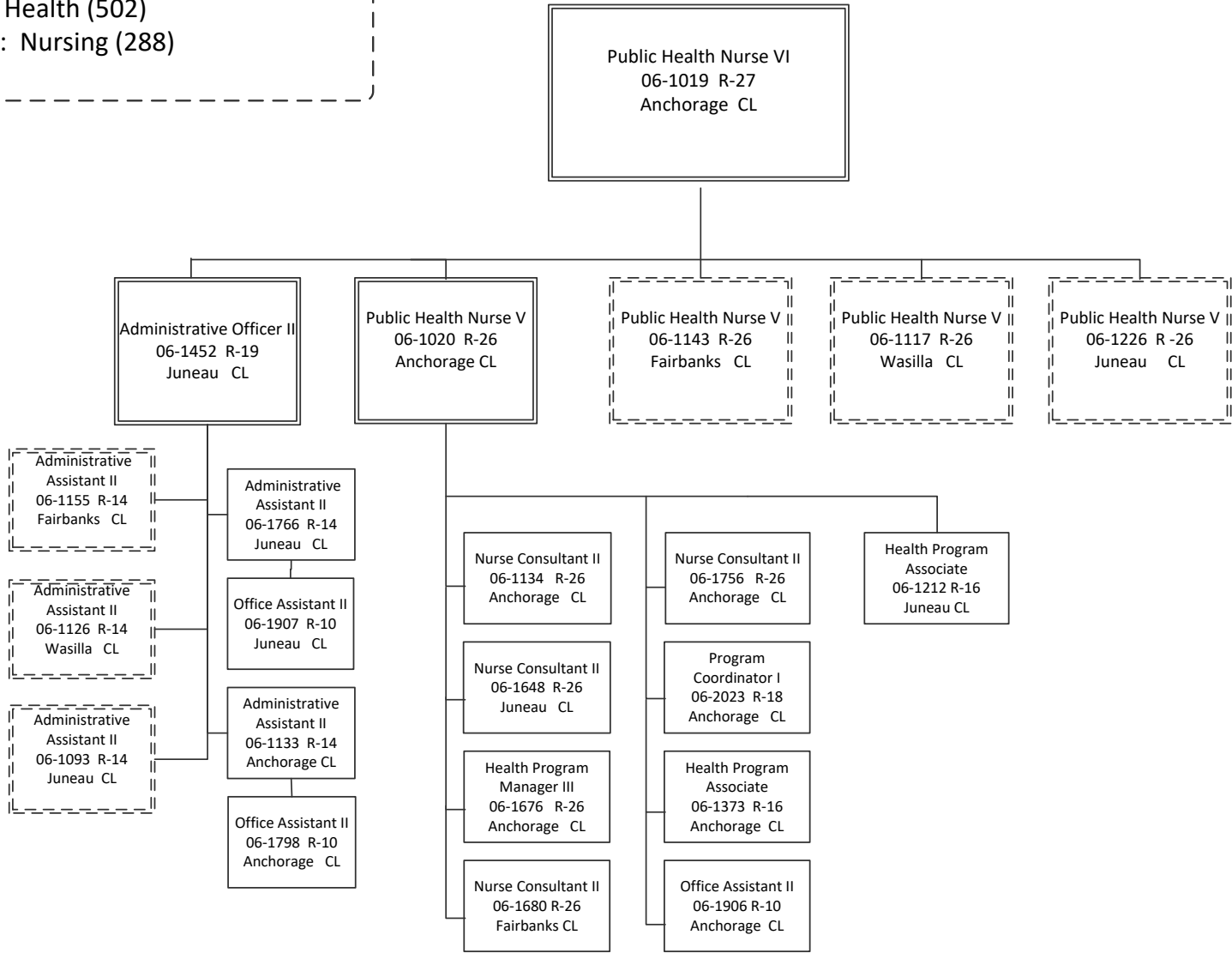
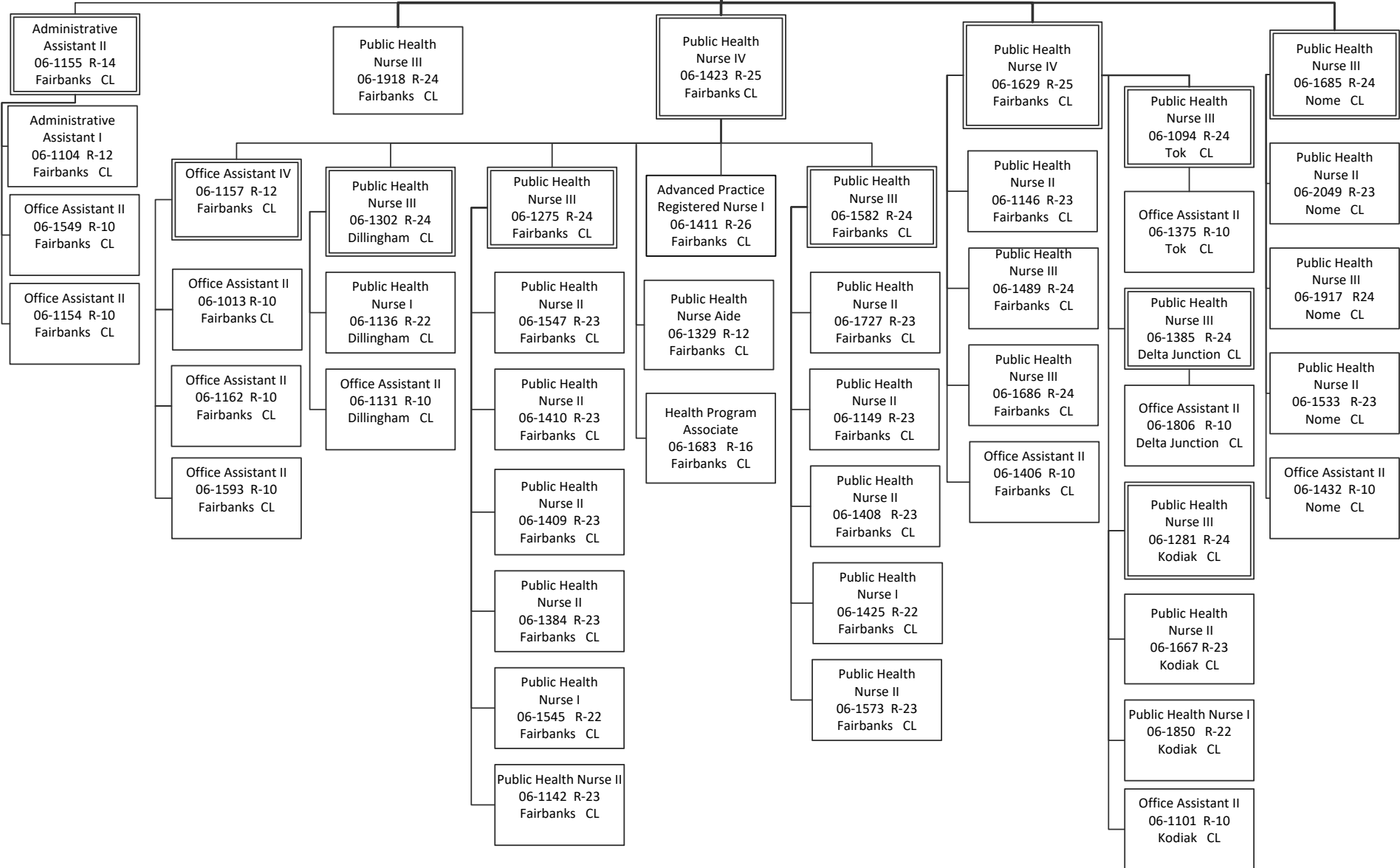


Department of Health and Social Services
 RDU: Public Health (502)
 Component: Nursing (288)



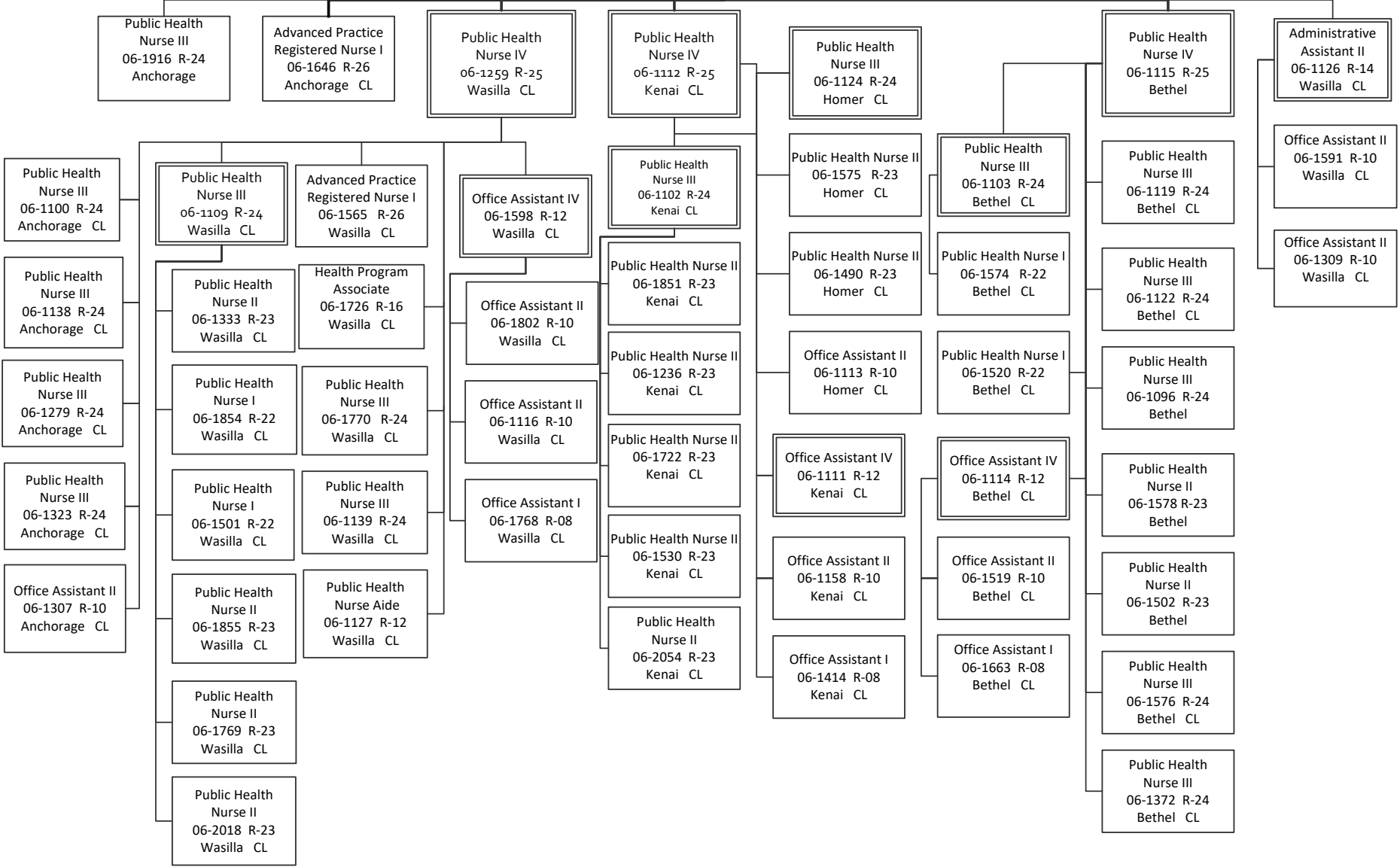
Department of Health and Social Services
 RDU: Public Health (502)
 Component: Nursing (288)

Public Health Nurse V
 06-1143 R-26
 Fairbanks CL



Department of Health and Social Services
 RDU: Public Health (502)
 Component: Nursing (288)

Public Health Nurse V
 06-1117 R-26
 Wasilla CL



Department of Health and Social Services
 RDU: Public Health (502)
 Component: Nursing (288)

Public Health Nurse V
 06-1226 R-26
 Juneau CL

