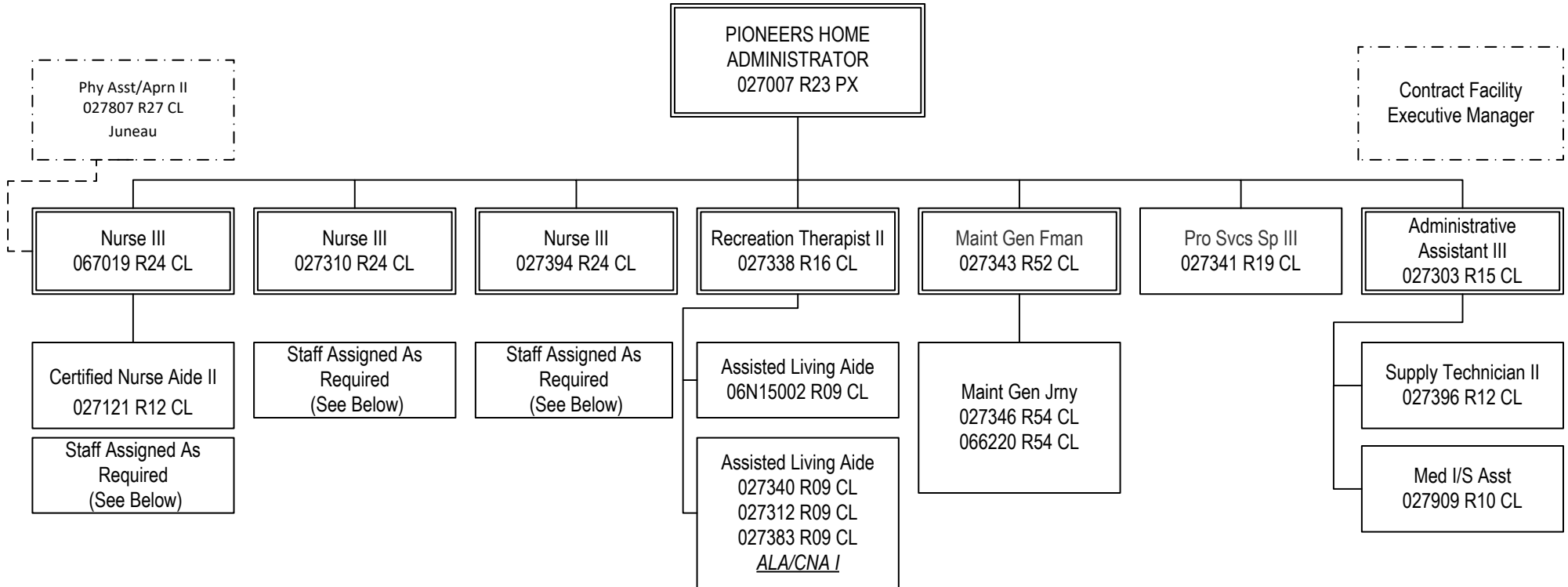


- | | | | | |
|--|--|--|--|---|
| <p>*Certified Nurse Aide II
 027425 R12 CL
 027435 R12 CL
 027554 R12 CL
 027586 R12 CL</p> | <p>Nurse II
 027580 R22 CL
 066205 R22 CL</p> | <p>LPN
 06N09021 R17 CL</p> | <p>*Certified Nurse Aide I
 06N09020 R11 CL</p> | <p>*Certified Nurse Aide I
 027594 R11 CL
 027614 R11 CL
 027632 R11 CL
 027835 R11 CL
 027840 R11 CL
 027919 R11 CL
 027924 R11 CL
 027925 R11 CL
 027953 R11 CL
 027956 R11 CL
 066079 R11 CL
 066120 R11 CL
 066129 R11 CL
 066161 R11 CL
 066200 R11 CL
 066201 R11 CL
 066207 R11 CL
 066224 R11 CL</p> |
| <p>*Certified Nurse Aide I
 027139 R11 CL
 027214 R11 CL
 027405 R11 CL
 027411 R11 CL
 027419 R11 CL
 027422 R11 CL
 027423 R11 CL
 027424 R11 CL
 027427 R11 CL
 027428 R11 CL
 027429 R11 CL
 027431 R11 CL
 027432 R11 CL
 027433 R11 CL
 027434 R11 CL
 027436 R11 CL
 ALA/CNA I</p> | <p>*Certified Nurse Aide I
 027437 R11 CL
 027438 R11 CL
 027439 R11 CL
 027443 R11 CL
 027452 R11 CL
 027455 R11 CL
 027456 R11 CL
 027462 R11 CL
 027463 R11 CL
 027464 R11 CL
 027467 R11 CL
 027470 R11 CL
 027477 R11 CL
 027478 R11 CL
 ALA/CNA I</p> | <p>*Certified Nurse Aide I
 027484 R11 CL
 027486 R11 CL
 027487 R11 CL
 027488 R11 CL
 027496 R11 CL
 027499 R11 CL
 027542 R11 CL
 027548 R11 CL
 027549 R11 CL
 027550 R11 CL
 027551 R11 CL
 027552 R11 CL
 027553 R11 CL
 027555 R11 CL
 ALA/CNA I</p> | <p>*Certified Nurse Aide I
 027556 R11 CL
 027557 R11 CL
 027573 R11 CL
 027579 R11 CL
 027582 R11 CL
 027583 R11 CL
 027584 R11 CL
 027585 R11 CL
 027587 R11 CL
 027588 R11 CL
 027589 R11 CL
 027590 R11 CL
 027591 R11 CL
 027592 R11 CL
 ALA/CNA I</p> | <p>Nurse II
 027357 R22 CL
 027413 R22 CL
 027421 R22 CL
 027489 R22 CL
 027923 R22 CL
 066204 R22 CL
 066243 R22 CL</p> <p>Nurse I
 027541 R21 CL</p> <p>LPN
 027415 R17 CL
 027416 R17 CL
 027420 R17 CL
 027543 R17 CL
 027546 R17 CL
 027547 R17 CL
 027576 R17 CL
 027577 R17 CL
 027581 R17 CL
 027921 R17 CL
 027922 R17 CL
 027955 R17 CL
 066194 R17 CL
 066222 R17 CL
 LPN/Nurse III</p> |

Bed Count: 168

All positions located in Anchorage unless otherwise noted

* Positions point to Assistant Administrator



**Certified Nurse Aide I 027304 R11 CL 027305 R11 CL 027307 R11 CL 027309 R11 CL 027313 R11 CL 027317 R11 CL 027319 R11 CL 027320 R11 CL 027322 R11 CL 027323 R11 CL 027325 R11 CL 027326 R11 CL 027327 R11 CL 027328 R11 CL 027329 R11 CL 027330 RR 1CL 027332 R11 CL 027333 R11 CL 027334 R11 CL 027335 R11 CL <u>ALA/CNA I</u>	**Certified Nurse Aide I 027339 R11 CL 027350 R11 CL 027351 R11 CL 027352 R11 CL 027356 R11 CL 027359 R11 CL 027375 R11 CL 027391 R11 CL 027392 R11 CL 027393 R11 CL 027398 R11 CL 027399 R11 CL 027907 R11 CL 027908 R11 CL 027918 R11 CL 066213 R11 CL 066214 R11 CL 066235 R11 CL 066236 R11 CL 066237 R11 CL <u>ALA/CNA I</u>	**Assisted Living Aide 027321 R09 CL 027336 R09 CL <u>ALA/CNA I</u>	Nurse II 027308 R22 CL 06N09086 R22 CL
**Certified Nurse Aide I 06N09087 R11 CL	LPN 06N15001 R17 CL	Nurse II 027342 R22 CL 027369 R22 CL 027390 R22 CL 027824 R22 CL 027958 R22 CL 066211 R22 CL 066212 R22 CL LPN 027306 R17 CL 027318 R17 CL 027397 R17 CL <u>LPN/NURSE VII</u>	

Bed Count: 79

All positions located in Palmer unless otherwise noted

** Positions Lead by CNA II

FY2022 Governor's Budget
 Department of Health and Social Services
 2671 - Alaska Pioneer Homes
 Fairbanks Pioneer Home

**PIONEERS HOME
 ADMINISTRATOR
 027200 R23 PX**

Contract Facility
 Executive Manager

Phy Asst/Aprn II
 027807 R27 CL
 Juneau

**PH Asst Admin
 027946 R21 CL**

**Maint Gen Fman
 027251 R52 CL**

**Pro Svcs Sp III
 027226 R19 CL**

**Administrative
 Assistant III
 027202 R15 CL**

**Nurse III
 027213 R24 CL**

**Certified Nurse Aide II
 027137 R12 CL
 066192 R12 CL
 066196 R12 CL**

Staff Assigned As Required
 (See Below)

**Maint Gen Jrny
 027256 R54 CL
 027265 R54 CL
 027290 R54 CL**

**Pro Svcs Sp I
 027207 R15 CL**

**Supply Technician II
 027204 R12 CL**

Staff Assigned As Required
 (See Below)

**Assisted Living Aide
 027247 R09 CL
 027941 R09 CL**

**Med I/S Asst
 027284 R10 CL**

**Nurse II
 06N09045 R22 CL**

**LPN
 06N09044 R17 CL**

**Nurse II
 027211 R22 CL
 027212 R22 CL
 027216 R22 CL
 027218 R22 CL
 027223 R22 CL
 027227 R22 CL
 027245 R22 CL
**LPN
 027217 R17 CL
 027221 R17 CL
 027228 R17 CL
 LPN/Nurse I/II****

***Certified
 Nurse Aide I
 06N09043 R11 CL**

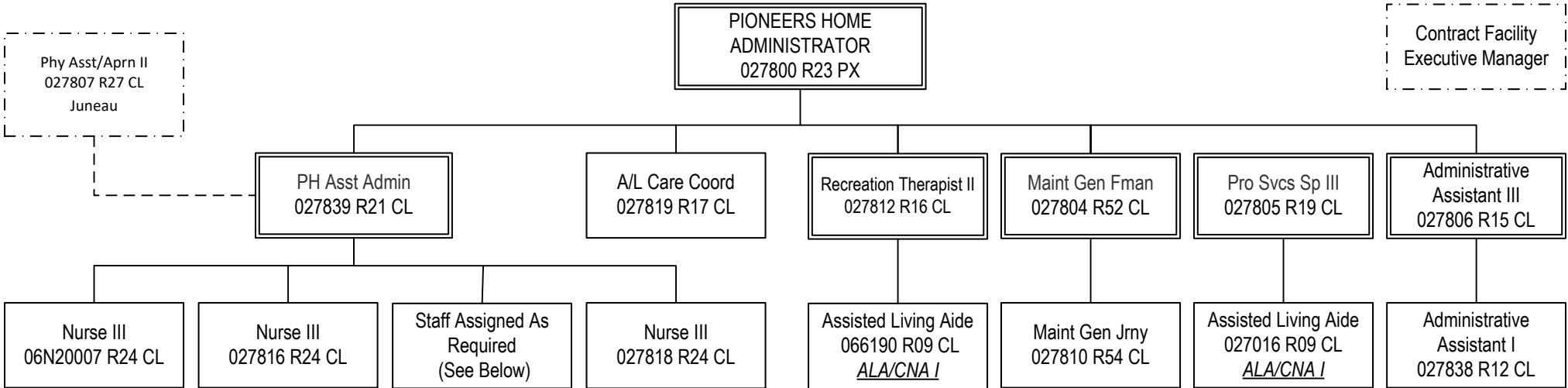
***Assisted
 Living Aide
 027208 R09 CL
 027220 R09 CL
 027233 R09 CL
 027236 R09 CL
 027931 R09 CL
 066147 R09 CL
 ALA/CNA I**

***Certified
 Nurse Aide I
 027109 R11 CL
 027126 R11 CL
 027201 R11 CL
 027203 R11 CL
 027205 R11 CL
 027209 R11 CL
 027210 R11 CL
 027215 R11 CL
 027219 R11 CL
 027222 R11 CL
 027224 R11 CL
 027225 R11 CL
 027229 R11 CL
 027230 R11 CL
 027231 R11 CL
 027234 R11 CL
 027235 R11 CL
 ALA/CNA I**

***Certified
 Nurse Aide I
 027237 R11 CL
 027238 R11 CL
 027240 R11 CL
 027241 R11 CL
 027246 R11 CL
 027249 R11 CL
 027252 R11 CL
 027270 R11 CL
 027276 R11 CL
 027298 R11 CL
 027932 R11 CL
 027933 R11 CL
 027935 R11 CL
 027936 R11 CL
 027937 R11 CL
 066040 R11 CL
 066195 R11 CL
 066199 R11 CL
 066241 R11 CL
 066242 R11 CL
 ALA/CNA I**

Bed Count: 91

All positions located in Fairbanks unless otherwise noted
 * Positions point to Assistant Administrator

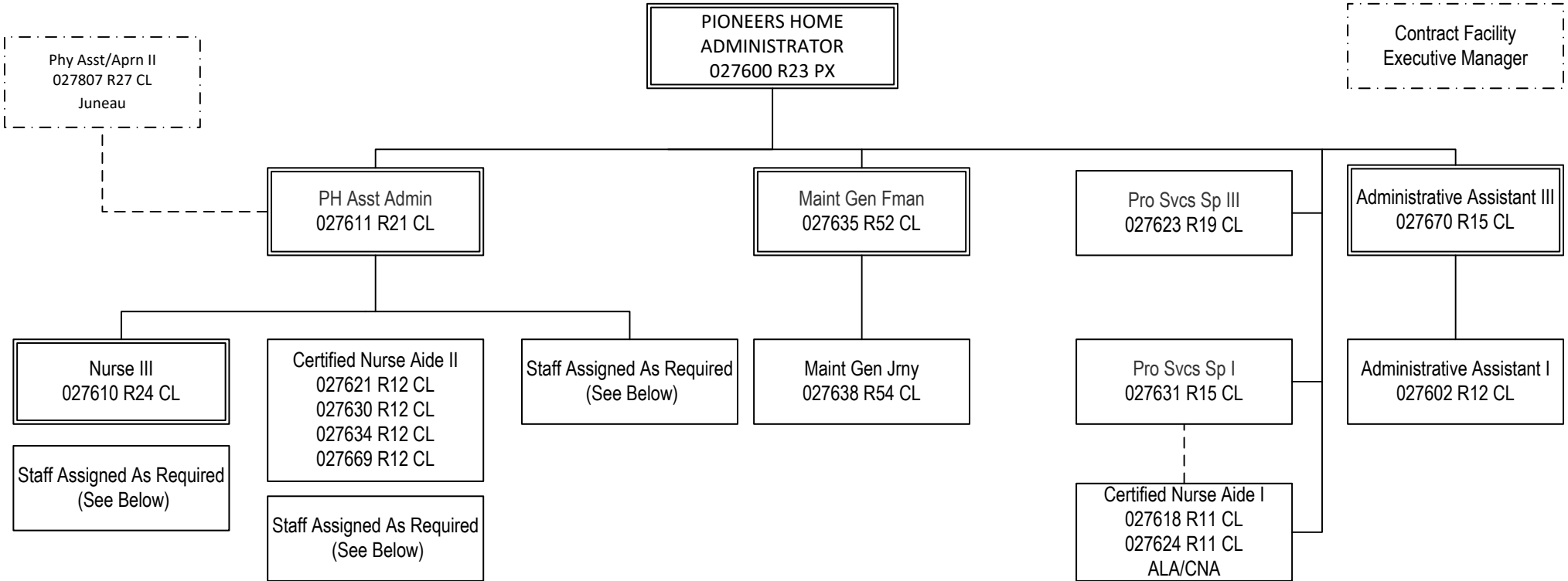


<p>*Nurse I 06N20006 R21 CL</p>	<p>*LPN 027820 R17 CL 027823 R17 CL 066188 R17 CL 066232 R17 CL <i>LPN/ Nurse III</i></p>	<p>*Certified Nurse Aide I 027244 R11 CL 027801 R11 CL 027803 R11 CL 027814 R11 CL 027815 R11 CL 027821 R11 CL 027826 R11 CL 027827 R11 CL 027828 R11 CL 027829 R11 CL 027830 R11 CL 027831 R11 CL 027832 R11 CL <i>ALA/CNA I</i></p>	<p>*Certified Nurse Aide I 027833 R11 CL 027834 R11 CL 027841 R11 CL 027842 R11 CL 027843 R11 CL 027904 R11 CL 066189 R11 CL 066223 R11 CL 066225 R11 CL <i>ALA/CNA I</i></p>
<p>*LPN 027817 R17 CL 06N20005 R17 CL</p>	<p>*Assisted Living Aide 027802 R09 CL 027813 R09 CL 027822 R09 CL 027825 R09 CL 027836 R09 CL <i>ALA/CNA I</i></p>		
<p>*Certified Nurse Aide I 06N09018 R11 CL</p>			
<p>*Assisted Living Aide 06N18007 R09 CL</p>			

Bed Count: 49

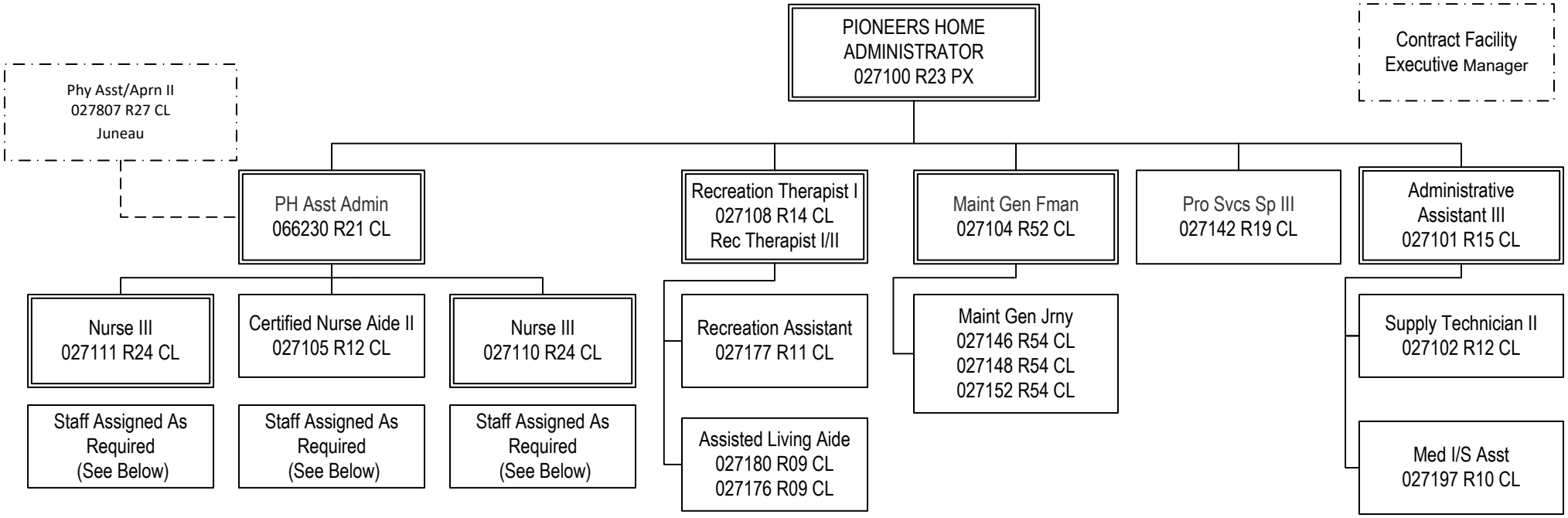
All positions located in Juneau unless otherwise noted

* Positions point to Assistant Administrator



- | | | | | |
|--|---|---|--|---|
| Nurse II
06N09005 R22 CL | *Assisted Living Aide
06N18029 R09 CL | *Certified Nurse Aide I
027119 R11 CL
027170 R11 CL
027601 R11 CL
027603 R11 CL
027606 R11 CL
027608 R11 CL
027609 R11 CL
027612 R11 CL
027613 R11 CL
027615 R11 CL
027616 R11 CL
027617 R11 CL
027619 R11 CL
ALA/CNA I | *Certified Nurse Aide I
027620 R11 CL
027633 R11 CL
027648 R11 CL
027671 R11 CL
027943 R11 CL
027945 R11 CL
066206 R11 CL
066238 R11 CL
066239 R11 CL
069504 R11 CL
ALA/CNA I | *Assisted Living Aide
027944 R09 CL
ALA/CNA I |
| Nurse I
06N09004 R21 CL | Nurse II
066240 R22 CL
Nurse III | | | |
| LPN
06N09003 R17 CL | LPN
027926 R17 CL | | | |
| *Certified Nurse Aide I
06N09002 R11 CL | Nurse II
027607 R22 CL
027605 R22 CL
LPN/Nurse III | | | |

Bed Count: 45
 All positions located in Ketchikan unless otherwise noted
 * Positions point to Assistant Administrator



****Certified Nurse Aide I**
 027120 R11 CL
 027122 R11 CL
 027124 R11 CL
 027125 R11 CL
 027127 R11 CL
 027128 R11 CL
 027129 R11 CL
 027130 R11 CL
 027131 R11 CL
 027132 R11 CL
 027133 R11 CL
 027134 R11 CL
 027135 R11 CL
 027136 R11 CL
 027138 R11 CL
 027140 R11 CL
 ALA/CNA I

****Certified Nurse Aide I**
 027141 R11 CL
 027143 R11 CL
 027144 R11 CL
 027159 R11 CL
 027164 R11 CL
 027178 R11 CL
 027901 R11 CL
 027903 R11 CL
 027905 R11 CL
 027912 R11 CL
 027913 R11 CL
 027950 R11 CL
 066210 R11 CL
 066228 R11 CL
 *Assisted Living Aide
 027951 R09 CL
 066217 R09 CL
 ALA/CNA I

Nurse II
 027106 R22 CL
 027112 R22 CL
 066226 R22 CL
 027114 R22 CL
 027118 R22 CL
 LPN
 027117 R17 CL
 027158 R17 CL
 LPN/Nurse I/II

Nurse II
 06N09033 R22CL

****CNA I**
 06N09031 R11 CL

***Assisted Living Aide**
 027934 R09 CL
 027949 R09 CL

Bed Count: 65

All positions located in Sitka unless otherwise noted

* Positions Point to Assistant Administrator

** Positions Point to Assistant Administrator but Lead by C.N.A. II

