

# **State of Alaska FY2022 Governor's Operating Budget**

## **Department of Health and Social Services Alaska Psychiatric Institute RDU/Component Budget Summary**

**RDU/Component: Alaska Psychiatric Institute****Contribution to Department's Mission**

Alaska Psychiatric Institute's contribution to the department's mission is to strive to improve and enhance the quality of life for consumers impacted by mental disorders through quality inpatient evaluation, care, and treatment.

**Core Services**

- Provide accessible, quality, and active inpatient treatment in a safe and comfortable setting through inpatient assessment, individualized planning and delivery of active multidisciplinary education and treatment services, discharge planning and arrangements in accordance with statutory mandates and strict healthcare industry standards and requirements.
- Provide and coordinate interagency behavioral healthcare through providing: (1) criminal court evaluations for persons with questions of competence to stand trial or culpability for a crime; (2) court-ordered inpatient treatment for competency or a finding of not guilty by reason of insanity; and (3) pharmacy services to the Division of Juvenile Justice.

**Major Component Accomplishments in 2020**

- Alaska Psychiatric Institute (API) established a Quality Assurance and Performance Improvement program and teams to address safety concerns.
- Alaska Psychiatric Institute established a hospital risk manager position and program to address patient and staff safety.
- Established COVID-19 response team.
- Filled key leadership positions with permanent staff.
- Corrective actions taken for nearly 400 findings with Joint Commission and other regulatory agencies.
- Met requirements and phased out of the WellPath management and consulting contract.

**Key Component Challenges**

- API is an 80-bed acute psychiatric facility with approximately 30 percent of our patient population being long term patients with complex discharge needs. This limits the number of beds available for admission from the community on a regular basis.
- API is challenged with being the only psychiatric facility in Alaska. It's expected that we admit patients that do not meet our admission criteria because the community does not have the necessary infrastructure to meet specific population needs, i.e. individuals with developmental disabilities and mental health and/or substance abuse, geriatric patients with dementia or Alzheimer's, and patients who are not competent, not restorable to return to the community and who do not meet the criteria for API or Department of Corrections.
- API continues to rely on Locum Tenen providers to see our patients as we have had poor results in our recruitment efforts due to low salary range. This remains an area of concern in the future.

**Significant Changes in Results to be Delivered in FY2022**

- Continue with the established foundation to follow state mandated procurement, contract and human resource processes. Continued education to all leaders and other staff on the established processes.
- Identifying gaps in the community continuum of care needs for inpatient psychiatric services.
- Assist Department of Health and Social Services (DHSS) with identifying needs lacking in the mental health community infrastructure.
- Assist DHSS to take action towards filling those gaps so API can provide more services to the community.
- Increasing clinical programming for the patients.
- Continue the culture of safety established during the pandemic.
- Improve collaborative relationships with other state agencies, i.e. Department of Corrections, Office of Public Advocacy.

- Improving billing and revenue collections.

### Statutory and Regulatory Authority

AS 12.47.010 - 130	Insanity and Competency to Stand Trial
AS 47.30.655 - 915	State Mental Health Policy (Hospitalization of Clients)
AS 18.20	Regulation of Hospitals
AS 08.86.010 - 230	Psychologists and Psychological Associates
AS 18.70.010 - 900	Fire Protection
AS 08.68.010 - 410	Nursing
AS 08.64.010 - 380	State Medical Board
AS 08.95.010 - 990	Clinical Social Workers
AS 08.84.010 - 190	Physical Therapists and Occupational Therapists
7AAC 12.215	Psychiatric Hospitals

Contact Information
<p><b>Contact:</b> Sylvan Robb, Division Director <b>Phone:</b> (907) 465-1630 <b>E-mail:</b> sylvan.robbs@alaska.gov</p>

Alaska Psychiatric Institute Personal Services Information				
Authorized Positions			Personal Services Costs	
	FY2021 Management Plan	FY2022 Governor		
Full-time	335	328	Annual Salaries	24,710,812
Part-time	0	0	COLA	248,746
Nonpermanent	11	10	Premium Pay	243,537
			Annual Benefits	14,865,907
			<i>Less 2.20% Vacancy Factor</i>	(880,602)
			Lump Sum Premium Pay	0
<b>Totals</b>	<b>346</b>	<b>338</b>	<b>Total Personal Services</b>	<b>39,188,400</b>

Position Classification Summary					
Job Class Title	Anchorage	Fairbanks	Juneau	Others	Total
Accountant III	1	0	0	0	1
Accounting Clerk	2	0	0	0	2
Accounting Technician I	2	0	0	0	2
Accounting Technician II	1	0	0	0	1
Accounting Technician III	1	0	0	0	1
Administrative Assistant I	3	0	0	0	3
Administrative Assistant II	1	0	0	0	1
Administrative Assistant III	1	0	0	0	1
Administrative Officer I	2	0	0	0	2
Ast Nurse Admin	1	0	0	0	1
Bldg Maint Supt	1	0	0	0	1
Chief Financial Officer	1	0	0	0	1
Chief Op Officer	1	0	0	0	1
Director of API	1	0	0	0	1
Director of Clinical Services	1	0	0	0	1
Env Svc Jrny I	5	0	0	0	5
Env Svc Jrny II	7	0	0	0	7
Environmental Services, Lead	1	0	0	0	1
Graduate Intern II	1	0	0	0	1
Health Program Manager II	1	0	0	0	1
Health Program Manager IV	1	0	0	0	1
Human Resource Consultant III	1	0	0	0	1
Human Resource Technician II	1	0	0	0	1
Industrial Therapist	1	0	0	0	1
Maint Gen Jrny	3	0	0	0	3
Med I/S Asst	2	0	0	0	2
Medical Officer	1	0	0	0	1
Medical Records Administrator	1	0	0	0	1
Mental Health Clinician I	1	0	0	0	1
Mental Health Clinician II	6	0	0	0	6
Mental Health Clinician III	21	0	0	0	21
Mental Health Clinician IV	3	0	0	0	3
Mt/Gen Sub I	1	0	0	0	1
Mt/Gen Sub II	1	0	0	0	1
Mts/Bfc Jrny II	1	0	0	0	1
Mts/Pb Jrny I	1	0	0	0	1

Position Classification Summary						
Job Class Title	Anchorage	Fairbanks	Juneau	Others	Total	
Nursing Administrator	1	0	0	0	1	
Occupational Therapist I	2	0	0	0	2	
Occupational Therapist II	1	0	0	0	1	
Office Assistant I	11	0	0	0	11	
Office Assistant II	2	0	0	0	2	
Paralegal I	1	0	0	0	1	
Paralegal II	1	0	0	0	1	
Pharmacist	1	0	0	0	1	
Pharmacist (Lead W/Adv Cert)	1	0	0	0	1	
Pharmacy Technician	1	0	0	0	1	
Phy Asst/Aprn I	5	0	0	0	5	
Phy Asst/Aprnii	1	0	0	0	1	
Pro Svcs Sp I	2	0	0	0	2	
Pro Svcs Sp II	3	0	0	0	3	
Pro Svcs Sp III	1	0	0	0	1	
Psy Nur Asst I	1	0	0	0	1	
Psy Nur Asst II	26	0	0	0	26	
Psy Nur Asst IV	25	0	0	0	25	
Psy Nur Asstiii	73	0	0	0	73	
Psychiatric Nurse I	17	0	0	0	17	
Psychiatric Nurse II	44	0	0	0	44	
Psychiatric Nurse III	13	0	0	0	13	
Psychiatric Nurse IV	3	0	0	0	3	
Recreation Therapist I	5	0	0	0	5	
Recreation Therapist II	1	0	0	0	1	
Research Analyst I	1	0	0	0	1	
Research Analyst III	1	0	0	0	1	
Sa & Bh Couns	2	0	0	0	2	
Staff Psychiatrist/Chief	1	0	0	0	1	
Staff Psychiatrist/No Brd Cert	3	0	0	0	3	
Staff Psychiatrist-Board Cert	3	0	0	0	3	
Stipend Recipient	1	0	0	0	1	
Stock & Parts Services I	1	0	0	0	1	
Supply Technician II	1	0	0	0	1	
Training Specialist II	1	0	0	0	1	
<b>Totals</b>	<b>338</b>	<b>0</b>	<b>0</b>	<b>0</b>	<b>338</b>	

**Component Detail All Funds**  
**Department of Health and Social Services**

**Component:** Alaska Psychiatric Institute (311)  
**RDU:** Alaska Psychiatric Institute (692)

Non-Formula Component

	FY2020 Actuals	FY2021 Conference Committee	FY2021 Authorized	FY2021 Management Plan	FY2022 Governor	FY2021 Management Plan vs FY2022 Governor	
71000 Personal Services	26,594.0	38,941.9	38,941.9	38,941.9	39,188.4	246.5	0.6%
72000 Travel	74.5	45.0	45.0	19.6	19.6	0.0	0.0%
73000 Services	16,100.0	14,166.5	14,166.5	13,126.5	13,126.5	0.0	0.0%
74000 Commodities	813.9	1,119.4	1,119.4	1,119.4	1,119.4	0.0	0.0%
75000 Capital Outlay	0.0	0.0	0.0	65.4	65.4	0.0	0.0%
77000 Grants, Benefits	2,011.9	1,035.7	1,035.7	2,035.7	2,035.7	0.0	0.0%
78000 Miscellaneous	0.0	508.5	0.0	0.0	0.0	0.0	0.0%
<b>Totals</b>	<b>45,594.3</b>	<b>55,817.0</b>	<b>55,308.5</b>	<b>55,308.5</b>	<b>55,555.0</b>	<b>246.5</b>	<b>0.4%</b>
<b>Fund Sources:</b>							
1001 CBR Fund (UGF)	0.0	942.6	434.1	434.1	0.0	-434.1	-100.0%
1004 Gen Fund (UGF)	15,055.4	2,827.7	2,827.7	2,827.7	3,281.5	453.8	16.0%
1007 I/A Rcpts (Other)	16,559.5	25,668.4	25,668.4	25,668.4	23,743.1	-1,925.3	-7.5%
1037 GF/MH (UGF)	11,600.5	11,652.9	11,652.9	11,652.9	11,712.1	59.2	0.5%
1108 Stat Desig (Other)	2,378.9	14,725.4	14,725.4	14,725.4	10,818.3	-3,907.1	-26.5%
1268 MH Tr Res (DGF)	0.0	0.0	0.0	0.0	6,000.0	6,000.0	100.0%
<b>Unrestricted General (UGF)</b>	<b>26,655.9</b>	<b>15,423.2</b>	<b>14,914.7</b>	<b>14,914.7</b>	<b>14,993.6</b>	<b>78.9</b>	<b>0.5%</b>
<b>Designated General (DGF)</b>	<b>0.0</b>	<b>0.0</b>	<b>0.0</b>	<b>0.0</b>	<b>6,000.0</b>	<b>6,000.0</b>	<b>100.0%</b>
<b>Other Funds</b>	<b>18,938.4</b>	<b>40,393.8</b>	<b>40,393.8</b>	<b>40,393.8</b>	<b>34,561.4</b>	<b>-5,832.4</b>	<b>-14.4%</b>
<b>Federal Funds</b>	<b>0.0</b>	<b>0.0</b>	<b>0.0</b>	<b>0.0</b>	<b>0.0</b>	<b>0.0</b>	<b>0.0%</b>
<b>Positions:</b>							
Permanent Full Time	348	348	348	335	328	-7	-2.1%
Permanent Part Time	0	0	0	0	0	0	0.0%
Non Permanent	11	11	11	11	10	-1	-9.1%

**Change Record Detail - Multiple Scenarios with Descriptions**  
**Department of Health and Social Services**

**Component:** Alaska Psychiatric Institute (311)  
**RDU:** Alaska Psychiatric Institute (692)

Scenario/Change Record Title	Trans Type	Totals	Personal Services	Travel	Services	Commodities	Capital Outlay	Grants, Benefits	Miscellaneous	Positions		NP
										PFT	PPT	
***** Changes From FY2021 Conference Committee To FY2021 Authorized *****												
<b>Alaska Psychiatric Institute Operating Costs Sec12(c) Ch19 SLA2018 P27 L27 (SB142) (FY18-FY20)</b>	ConfCom	0.0	0.0	0.0	0.0	0.0	0.0	0.0	0.0	20	0	0

Carry forward the unexpended balance of the appropriation made in Sec12(c) Ch19 SLA2018 P27 L27 (SB142), as amended by Sec11b, Ch 1, FSSLA2019, P60, L12 (HB39) for Alaska Psychiatric Institute operating costs.

Sec. 11. SUPPLEMENTAL DEPARTMENT OF HEALTH AND SOCIAL SERVICES. (b) Section 12(c), ch. 19, SLA 2018, is amended to read:  
(c) The following amounts are appropriated from the specified sources to the Department of Health and Social Services, behavioral health, Alaska Psychiatric Institute, for operating expenses for the fiscal years ending June 30, 2018, June 30, 2019, and June 30, 2020:  
(1) the sum of \$1,736,000 from the general fund;  
(2) the sum of \$682,000 from designated program receipts under AS 37.05.146(b)(3);  
(3) the sum of \$682,000 from interagency receipts.

Original Appropriation: \$ 3,100.0  
FY2018 Expenditures: \$ 0.0  
FY2019 Expenditures: \$ 2,413.3  
FY2020 Carryforward: \$ 686.7

**Conference Committee**

	ConfCom	55,817.0	38,941.9	45.0	14,166.5	1,119.4	0.0	1,035.7	508.5	328	0	11
1001 CBR Fund		942.6										
1004 Gen Fund		2,827.7										
1007 I/A Rcpts		25,668.4										
1037 GF/MH		11,652.9										
1108 Stat Desig		14,725.4										

**Await Morse Ruling Final Judgement - Crisis Placement**

	Veto	-508.5	0.0	0.0	0.0	0.0	0.0	0.0	-508.5	0	0	0
1001 CBR Fund		-508.5										

This item was added to the budget in anticipation of the Morse Ruling (case number: 3AN-18-09814CI). Rather than speculate as to the outcome of that ruling, it is more appropriate to wait for a final judgement or settlement to ensure that the terms ordered by the presiding judge match appropriations made in satisfaction of that ruling.

<b>Subtotal</b>		<b>55,308.5</b>	<b>38,941.9</b>	<b>45.0</b>	<b>14,166.5</b>	<b>1,119.4</b>	<b>0.0</b>	<b>1,035.7</b>	<b>0.0</b>	<b>348</b>	<b>0</b>	<b>11</b>
***** Changes From FY2021 Authorized To FY2021 Management Plan *****												
<b>Align Authority for Grants Costs Related to Outsourcing and Capital Outlay for Needed Equipment</b>	LIT	0.0	0.0	-25.4	-1,040.0	0.0	65.4	1,000.0	0.0	0	0	0

Transfer authority from travel and services to cover anticipated capital outlay and grants costs. Outsourcing medical providers historically has been over \$2,000.0

**Change Record Detail - Multiple Scenarios with Descriptions**  
**Department of Health and Social Services**

**Component:** Alaska Psychiatric Institute (311)

**RDU:** Alaska Psychiatric Institute (692)

Scenario/Change Record Title	Trans Type	Totals	Personal Services	Travel	Services	Commodities	Capital Outlay	Grants, Benefits	Miscellaneous	Positions		NP
										PFT	PPT	
annually; this transfer will allow for accuracy and transparency. Capital outlay authority is needed to accommodate the failing medical carts required to provide secure and accurate medicine dispensing, and for a fingerprint scanner required to perform background checks for the hospital.												
<b>Delete Long-term Vacant Positions No Longer Needed</b>												
	PosAdj	0.0	0.0	0.0	0.0	0.0	0.0	0.0	0.0	-9	0	0
The following positions are vacant and no longer needed because the duties of these positions are sufficiently performed by others. Both the maintenance and administration areas continue to have appropriate staffing to meet the needs of the hospital.												
Full-time Maintenance General Journey (06-?083), range 54, located in Anchorage												
Full-time Maintenance General Journey (06-?185), range 54, located in Anchorage												
Full-time Maintenance General Journey (06-?186), range 54, located in Anchorage												
Full-time Maintenance General Journey (06-?187), range 54, located in Anchorage												
Full-time Maintenance General Journey (06-?188), range 54, located in Anchorage												
Full-time Maintenance General Journey (06-2560), range 54, located in Anchorage												
Full-time Administrative Officer I (06-2561), range 17, located in Anchorage												
Full-time Maintenance General Journey (06-5024), range 54, located in Anchorage												
Full-time Maintenance Specialist, Building/Facility/Construction, Journey I (06-5041), range 53, located in Anchorage												
<b>Transfer Four Positions to Behavioral Health Administration to Support 1115 Demonstration Waiver Project</b>												
	Trout	0.0	0.0	0.0	0.0	0.0	0.0	0.0	0.0	-4	0	0
The following positions are transferred to expand programmatic oversight and capacity across the service array to assist in the continuing reform efforts associated with the Medicaid Redesign Initiative via SB 74.												
Full-time Administrative Assistant III (06-2481), range 15, located in Anchorage. The position is reclassified to a full-time, range 20, Accountant IV.												
Full-time Accounting Clerk (06-2556), range 10, located in Anchorage. The position is reclassified to a full-time, range 21, Medicaid Program Specialist IV.												
Full-time Medical Information and Services Supervisor (06-5107), range 13, located in Anchorage. The position is reclassified to a full-time, range 22, Medicaid Program Specialist V.												
Full-time Safety Officer (06-5342), range 18, located in Anchorage. The position is reclassified to a full-time, range 20, Medicaid Program Specialist III.												
<b>Subtotal</b>		<b>55,308.5</b>	<b>38,941.9</b>	<b>19.6</b>	<b>13,126.5</b>	<b>1,119.4</b>	<b>65.4</b>	<b>2,035.7</b>	<b>0.0</b>	<b>335</b>	<b>0</b>	<b>11</b>
***** <b>Changes From FY2021 Management Plan To FY2022 Governor</b> *****												
<b>Reverse Alaska Psychiatric Institute Operating Costs Sec12(c) Ch19 SLA2018 P27 L27 (SB142) (FY18-FY20)</b>												
	OTI	0.0	0.0	0.0	0.0	0.0	0.0	0.0	0.0	-20	0	0

Carry forward the unexpended balance of the appropriation made in Sec12(c) Ch19 SLA2018 P27 L27 (SB142), as amended by Sec11b, Ch 1, FSSLA2019, P60, L12 (HB39) for Alaska Psychiatric Institute operating costs.



**Change Record Detail - Multiple Scenarios with Descriptions**  
**Department of Health and Social Services**

**Component:** Alaska Psychiatric Institute (311)  
**RDU:** Alaska Psychiatric Institute (692)

Scenario/Change Record Title	Trans Type	Totals	Personal Services	Travel	Services	Commodities	Capital Outlay	Grants, Benefits	Miscellaneous	Positions		
										PFT	PPT	NP

Sec. 11. SUPPLEMENTAL DEPARTMENT OF HEALTH AND SOCIAL SERVICES. (b) Section 12(c), ch. 19, SLA 2018, is amended to read:  
(c) The following amounts are appropriated from the specified sources to the Department of Health and Social Services, behavioral health, Alaska Psychiatric Institute, for operating expenses for the fiscal years ending June 30, 2018, June 30, 2019, and June 30, 2020:  
(1) the sum of \$1,736,000 from the general fund;  
(2) the sum of \$682,000 from designated program receipts under AS 37.05.146(b)(3);  
(3) the sum of \$682,000 from interagency receipts.

Original Appropriation: \$ 3,100.0  
FY2018 Expenditures: \$ 0.0  
FY2019 Expenditures: \$ 2,413.3  
FY2020 Carryforward: \$ 686.7

**FY2022 Salary Adjustments**

SalAdj	246.5	246.5	0.0	0.0	0.0	0.0	0.0	0.0	0.0	0	0	0
1004 Gen Fund	19.7											
1007 I/A Rcpts	74.7											
1037 GF/MH	59.2											
1108 Stat Desig	92.9											

FY2022 1% COLA for ASEA/General Government (GG/GP/GY/GZ): \$246.5

**Transfer (06-5092 and 06-5172) to Administrative Support Services to Support Human Resource Efforts**

Trout	0.0	0.0	0.0	0.0	0.0	0.0	0.0	0.0	0.0	-2	0	0
-------	-----	-----	-----	-----	-----	-----	-----	-----	-----	----	---	---

The following positions are transferred to expand programmatic oversight and capacity across the service array to assist in continuing human resource support and recruitment efforts for the Department of Health and Social Services.

Full-time Secretary (06-5092), range 11, located in Anchorage. The position is reclassified to a full-time, range 14, Human Resource Technician II located in Juneau.

Full-time Administrative Assistant I (06-5172), range 12, located in Anchorage. The position is reclassified to a full-time, range 14, Human Resource Technician II located in Juneau.

**Delete Long-Term Vacant Positions No Longer Needed**

PosAdj	0.0	0.0	0.0	0.0	0.0	0.0	0.0	0.0	0.0	-6	0	-2
--------	-----	-----	-----	-----	-----	-----	-----	-----	-----	----	---	----

The following positions are vacant and no longer needed because the duties of these positions are sufficiently performed by others.

Stipend Recipient (06-?092), range 0, located in Anchorage  
Stipend Recipient (06-?190), range 0, located in Anchorage  
Staff Psychiatrist-Board Certified (06-2281), range 29, located in Anchorage

**Change Record Detail - Multiple Scenarios with Descriptions**  
**Department of Health and Social Services**

**Component:** Alaska Psychiatric Institute (311)  
**RDU:** Alaska Psychiatric Institute (692)

Scenario/Change Record Title	Trans Type	Totals	Personal Services	Travel	Services	Commodities	Capital Outlay	Grants, Benefits	Miscellaneous	Positions		
										PFT	PPT	NP
Information System Coordinator (06-2318), range 18, located in Anchorage												
Administrative Assistant II (06-2385), range 14, located in Anchorage												
Mental Health Clinician III (06-2565), range 21, located in Anchorage												
Office Assistant IV (06-5212), range 12, located in Anchorage												
Project Assistant (06-5330), range 16, located in Anchorage												
<b>Add Director of Clinical Services (06-#311) for Therapeutic Clinical Program</b>												
	PosAdj	0.0	0.0	0.0	0.0	0.0	0.0	0.0	0.0	0	0	1
Add Director of Clinical Services (06-#311), range 24, located in Anchorage, to Alaska Psychiatric Institute to expand programmatic oversight and capacity across the service array of the therapeutic clinical program. This position will provide oversight and direction to social work, psychology, forensics, and rehabilitation. This position will also be a part of the core leadership team at Alaska Psychiatric Institute. This position will work collaboratively with the Medical Director and Director of Nursing to identify areas of improvement and strategize solutions.												
<b>Add Human Resource Consultant III (06-2574) for Human Resources</b>												
	PosAdj	0.0	0.0	0.0	0.0	0.0	0.0	0.0	0.0	1	0	0
Add Human Resource Consultant III (06-2574), range 19, located in Anchorage, to Alaska Psychiatric Institute to expand programmatic oversight and capacity across the service array in the Human Resources Section.												
Under the general direction of the Chief Executive Officer, this position provides oversight and direction for the Human Resources Section in the Alaska Psychiatric Institute. A Human Resource presence at the hospital will permit more proactive engagement with management, employees, and unions. The establishment of this position allows for investigations to be completed more timely with the access of hospital investigative materials. This position may result in a cost-savings by reducing liability in adverse employment actions, identifying and implementing efficiencies in personnel processes, and reducing the use of administrative leave by completing investigations in a timelier manner.												
<b>Add Twenty Positions to Alaska Psychiatric Institute to Continue Stabilization</b>												
	PosAdj	0.0	0.0	0.0	0.0	0.0	0.0	0.0	0.0	20	0	0
Add twenty positions to Alaska Psychiatric Institute to continue stabilization and reduce the Provider Agreements in locum tenens and traveling nurses.												
Alaska Psychiatric Institute is the sole publicly funded state psychiatric hospital in the State of Alaska. Alaska Psychiatric Institute has 80 licensed beds through five inpatient units. Services delivered include forensic restoration and acute inpatient care.												
<b>Fund Source Adjustment of CBRF to UGF</b>												
	FndChg	0.0	0.0	0.0	0.0	0.0	0.0	0.0	0.0	0	0	0
1001 CBR Fund		-434.1										
1004 Gen Fund		434.1										
<b>Support Client Services at the Alaska Psychiatric Institute</b>												
	FndChg	0.0	0.0	0.0	0.0	0.0	0.0	0.0	0.0	0	0	0
1007 I/A Rcpts		-2,000.0										

**Change Record Detail - Multiple Scenarios with Descriptions**  
**Department of Health and Social Services**

**Component:** Alaska Psychiatric Institute (311)  
**RDU:** Alaska Psychiatric Institute (692)

Scenario/Change Record Title	Trans Type	Totals	Personal Services	Travel	Services	Commodities	Capital Outlay	Grants, Benefits	Miscellaneous	Positions											
										PFT	PPT	NP									
1108 Stat Desig		-4,000.0																			
1268 MH Tr Res		6,000.0																			
<b>Totals</b>											<b>55,555.0</b>	<b>39,188.4</b>	<b>19.6</b>	<b>13,126.5</b>	<b>1,119.4</b>	<b>65.4</b>	<b>2,035.7</b>	<b>0.0</b>	<b>328</b>	<b>0</b>	<b>10</b>

Alaska Psychiatric Institute is the sole publicly funded state psychiatric hospital in the State of Alaska. Alaska Psychiatric Institute has 80 licensed beds through five inpatient units. Services delivered include forensic restoration and acute inpatient care.

Analyzing FY2015 through FY2020 expenditure and revenue actuals compared to authority by fund source has identified that Inter-Agency and Statutory Designated Fund Receipts have had increases that were unrealistic for collection. The Alaska Psychiatric Institute will continue to subsidize patients unable to pay for services received and aligns funding sources with anticipated revenue.

Use of budget fund code 1268 directs expenditure of money held in reserve in the Mental Health Trust Settlement Income Account in excess of the amount directed for use by the Trust through annual recommendations (state accounting system fund 3321). Per AS 37.14.041(b) money in excess of the amount needed to meet the necessary expenses of the state's integrated comprehensive mental health program shall be transferred to the general fund and used for any public purpose. To ensure these monies are expended to the benefit of the state's mental health program and not swept to the general fund, a portion of the reserves are being utilized to fund various mental health programs and Trust recommendations with the intent of drawing reserves down over a period of five years.

**Line Item Detail (1676)**  
**Department of Health and Social Services**  
**Travel**

**Component:** Alaska Psychiatric Institute (311)

Line Number	Line Name		FY2020 Actuals	FY2021 Management Plan	FY2022 Governor
2000	Travel		74.5	19.6	19.6
Object Class	Servicing Agency	Explanation	FY2020 Actuals	FY2021 Management Plan	FY2022 Governor
<b>2000 Travel Detail Totals</b>			<b>74.5</b>	<b>19.6</b>	<b>19.6</b>
2000	In-State Employee Travel	Surface transport for in-state employee travel - healthcare and reimbursed travel via third party	15.6	16.6	15.0
2001	In-State Non-Employee Travel		14.2	0.0	0.0
2002	Out of State Employee Travel	Out of state employee travel to support hospital through conference and training attendance	13.8	3.0	4.6
2003	Out of State Non-Employee Travel		14.7	0.0	0.0
2005	Moving Costs	Moving costs for new employees	16.2	0.0	0.0

**Line Item Detail (1676)**  
**Department of Health and Social Services**  
**Services**

**Component:** Alaska Psychiatric Institute (311)

Line Number	Line Name		FY2020 Actuals	FY2021 Management Plan	FY2022 Governor
3000	Services		16,100.0	13,126.5	13,126.5
Object Class	Servicing Agency	Explanation	FY2020 Actuals	FY2021 Management Plan	FY2022 Governor
<b>3000 Services Detail Totals</b>			<b>16,100.0</b>	<b>13,126.5</b>	<b>13,126.5</b>
3000	Education Services	Hospital education and training for staff	14.0	15.0	15.0
3001	Financial Services	Hospital cost reporting and management contracts	38.4	20.0	30.9
3002	Legal and Judicial Services	Legal and judicial services such as court fees not paid for by API's attorney Reimbursable Service Agreement with the Department of Law	0.0	16.5	16.5
3003	Information Technology	Medical Epocrates (Pharmacy) software licensing, Zydoc/Dragon speech recognition, ResQ, and other software used for hospital purposes	293.1	270.1	270.1
3004	Telecommunications	Long distance services, local/equipment charges, cellular phone charges, internet charges	49.1	64.5	64.5
3005	Health Services	Medical and professional staff contracts to include weekend staff	1,468.9	0.0	0.0
3006	Delivery Services	Courier and express mail delivery services	3.8	10.1	10.1
3007	Advertising and Promotions	Advertising for hospital recruitment(s) and regulatory notices as needed	0.0	11.0	11.0
3008	Utilities	Electricity, water & sewer, waste disposal and incineration, natural gas, and other utilities	434.8	451.8	451.8
3009	Structure/Infrastructure/Land	Surveys, inspections, elevator	360.2	300.2	150.0

**Line Item Detail (1676)**  
**Department of Health and Social Services**  
**Services**

**Component:** Alaska Psychiatric Institute (311)

Object Class	Servicing Agency	Explanation	FY2020 Actuals	FY2021 Management Plan	FY2022 Governor
<b>3000 Services Detail Totals</b>			<b>16,100.0</b>	<b>13,126.5</b>	<b>13,126.5</b>
		maintenance, pavement/lot/lighting improvements, other maintenance and improvements to facilities as necessary			
3010	Equipment/Machinery	Maintenance of industrial equipment and machinery	81.6	38.5	38.5
3011	Other Services	Dietary, national accreditation support services, other services, and contracts to support hospital	10,512.4	10,318.5	10,457.8
3017	Inter-Agency Information Technology Non-Telecommunications	Admin - Department-wide Inter-agency Information Technology Non-Telecommunications expenditures	1,709.5	0.0	0.0
3017	Inter-Agency Information Technology Non-Telecommunications	H&SS - Administrative Support Svcs (320) Reimbursable Service Agreement: IT chargeback for business applications	0.0	394.0	394.0
3017	Inter-Agency Information Technology Non-Telecommunications	H&SS - Information Technology Services (2754) Reimbursable Service Agreement: IT Chargeback for Customer Services	0.0	202.0	202.0
3018	Inter-Agency Information Technology Telecommunications	Admin - Department-wide Reimbursable Service Agreement: MICS computer service usage, telecommunications phone (ETS)	95.4	370.0	370.0
3018	Inter-Agency Information Technology Telecommunications	Law - Department-wide Reimbursable Service Agreement: HIPAA compliance and regulatory legal aid	0.0	2.6	2.6
3021	Inter-Agency Mail	Admin - Department-wide Reimbursable Service Agreement: Inter-agency mail services	0.0	3.5	3.5
3022	Inter-Agency Human Resources	Admin - Department-wide Reimbursable Service Agreement: Human Resource chargeback	250.7	165.0	165.0
3024	Inter-Agency Legal	Law - Department-wide Reimbursable Service Agreement: API dedicated attorney and specific legal costs.	251.0	227.6	227.6
3026	Inter-Agency Insurance	Admin - Department-wide Reimbursable Service Agreement: Risk management/property and malpractice insurance	67.9	60.0	60.0

**Line Item Detail (1676)**  
**Department of Health and Social Services**  
**Services**

**Component:** Alaska Psychiatric Institute (311)

Object Class		Servicing Agency	Explanation	FY2020 Actuals	FY2021 Management Plan	FY2022 Governor
<b>3000 Services Detail Totals</b>				<b>16,100.0</b>	<b>13,126.5</b>	<b>13,126.5</b>
3027	Inter-Agency Financial	Admin - Department-wide	Inter-agency financial services	25.8	0.0	0.0
3028	Inter-Agency Americans with Disabilities Act Compliance	Admin - Department-wide	Reimbursable Service Agreement: ADA Compliance	2.7	0.6	0.6
3029	Inter-Agency Education/Training	Admin - Department-wide	Reimbursable Service Agreement: Inter-agency chargeback for training costs associated with State of Alaska courses	0.0	0.1	0.1
3036	Inter-Agency Safety	H&SS - Residential Licensing (245)	Reimbursable Service Agreement: Costs associated with residential licensing	4.8	11.6	11.6
3037	State Equipment Fleet	Trans - Department-wide	Reimbursable Service Agreement: Vehicle repairs and maintenance	21.8	23.3	23.3
3038	Inter-Agency Management/Consulting	Gov - Department-wide	Inter-agency management/consulting services	5.4	0.0	0.0
3038	Inter-Agency Management/Consulting	H&SS - Administrative Support Svcs (320)	Reimbursable Service Agreement: Department Support Services Chargeback	146.9	150.0	150.0
3038	Inter-Agency Management/Consulting	H&SS - Commissioner's Office (317)	Inter-agency management/consulting services	237.4	0.0	0.0
3038	Inter-Agency Management/Consulting	H&SS - Facilities Management (2020)	Inter-agency management/consulting services	4.0	0.0	0.0
3038	Inter-Agency Management/Consulting	H&SS - Public Affairs (2874)	Inter-agency management/consulting services	18.2	0.0	0.0
3038	Inter-Agency Management/Consulting	Labor - Department-wide	Inter-agency management/consulting services	2.2	0.0	0.0

**Line Item Detail (1676)**  
**Department of Health and Social Services**  
**Commodities**

**Component:** Alaska Psychiatric Institute (311)

Line Number	Line Name		FY2020 Actuals	FY2021 Management Plan	FY2022 Governor
4000	Commodities		813.9	1,119.4	1,119.4
Object Class	Servicing Agency	Explanation	FY2020 Actuals	FY2021 Management Plan	FY2022 Governor
<b>4000 Commodities Detail Totals</b>			<b>813.9</b>	<b>1,119.4</b>	<b>1,119.4</b>
4000	Business	General business supplies including paper, office products, books, and other business items needed for hospital operations	172.2	229.3	229.3
4001	Agricultural	Fertilizer and plant supplies	0.0	3.6	3.6
4002	Household/Institutional	Institutional cleaning supplies, non-food supplies, office products, other household items to support hospital operations	152.3	160.2	160.2
4003	Scientific and Medical	Pharmaceuticals (for API patients and Youth Centers), medical instruments and applications	408.1	593.6	593.6
4004	Safety	First aid supplies, body protection, other items for safety and compliance	17.3	4.4	4.4
4005	Building Materials	Includes lumber, masonry, plumbing, electrical, signs, and other building items needed to maintain structure of building	0.0	30.5	30.5
4008	Aggregate	Gravel for parking lot during winter	0.1	0.9	0.9
4011	Electrical		4.8	0.0	0.0
4012	Plumbing	Pipes, gaskets, other plumbing supplies for general maintenance of facility	0.2	0.1	0.1
4013	Lube Oils/Grease/Solvents	Oils for lawnmowers, lubes, grease and oils for building equipment maintenance	2.2	0.7	0.7



**Line Item Detail (1676)**  
**Department of Health and Social Services**  
**Commodities**

**Component:** Alaska Psychiatric Institute (311)

Object Class	Servicing Agency	Explanation	FY2020 Actuals	FY2021 Management Plan	FY2022 Governor
<b>4000 Commodities Detail Totals</b>			<b>813.9</b>	<b>1,119.4</b>	<b>1,119.4</b>
4014	Bottled Gas		0.2	0.0	0.0
4015	Parts and Supplies	Maintenance of hospital bench stock such as washers, nuts, bolts, and other items commonly and routinely used for general maintenance	96.1	81.6	81.6
4016	Paint/Preservatives	Paint and preservatives used for maintenance of interior and exterior walls	0.9	0.6	0.6
4018	Surface Chemicals		0.2	0.0	0.0
4019	Small Tools/Minor Equipment	Small tools such as screwdrivers, minor equipment such as lawnmowers needed for general maintenance and repair.	3.1	13.9	13.9
4022	Commodity Transfer		-43.8	0.0	0.0

**Line Item Detail (1676)**  
**Department of Health and Social Services**  
**Capital Outlay**

**Component:** Alaska Psychiatric Institute (311)

Line Number	Line Name		FY2020 Actuals	FY2021 Management Plan	FY2022 Governor
5000	Capital Outlay		0.0	65.4	65.4
Object Class	Servicing Agency	Explanation	FY2020 Actuals	FY2021 Management Plan	FY2022 Governor
<b>5000 Capital Outlay Detail Totals</b>			<b>0.0</b>	<b>65.4</b>	<b>65.4</b>
5004	Equipment	Equipment	0.0	65.4	65.4

**Line Item Detail (1676)**  
**Department of Health and Social Services**  
**Grants, Benefits**

**Component:** Alaska Psychiatric Institute (311)

Line Number	Line Name		FY2020 Actuals	FY2021 Management Plan	FY2022 Governor
7000	Grants, Benefits		2,011.9	2,035.7	2,035.7
Object Class	Servicing Agency	Explanation	FY2020 Actuals	FY2021 Management Plan	FY2022 Governor
		<b>7000 Grants, Benefits Detail Totals</b>	<b>2,011.9</b>	<b>2,035.7</b>	<b>2,035.7</b>
7001	Grants	Locum tenens physician, locum tenens psychiatric, relief nursing staff, pharmacy relief staff, patient related travel and transportation, individual assistance for patients deemed indigent per hospital policy	1,945.9	1,944.5	1,944.5
7002	Benefits	Benefits for indigent patient care as indicated per hospital policy	66.0	91.2	91.2

**Revenue Detail (1681)**  
**Department of Health and Social Services**

**Component:** Alaska Psychiatric Institute (311)

Revenue Type (OMB Fund Code) Revenue Source	Component	Comment	FY2020 Actuals	FY2021 Management Plan	FY2022 Governor
<b>5007 I/A Rcpts (1007 I/A Rcpts)</b>			<b>16,559.5</b>	<b>25,668.4</b>	<b>23,743.1</b>
5301 Inter-Agency Receipts	H&SS - Bethel Youth Facility (268)	Reimbursable Service Agreement: Pharmacy products	0.0	2.5	2.5
5301 Inter-Agency Receipts	H&SS - Fairbanks Youth Facility (265)	Reimbursable Service Agreement: Pharmacy products	0.0	2.0	2.0
5301 Inter-Agency Receipts	H&SS - Johnson Youth Center (267)	Reimbursable Service Agreement: Pharmacy products	0.0	5.0	5.0
5301 Inter-Agency Receipts	H&SS - Juvenile Justice Health Care (3070)	Reimbursable Service Agreement: Pharmacy products	83.8	0.5	0.0
5301 Inter-Agency Receipts	H&SS - McLaughlin Youth Center (264)	Reimbursable Service Agreement: Pharmacy products	0.0	95.0	98.0
5301 Inter-Agency Receipts	H&SS - Medicaid Services (3234)	Proshare allocation to Institution for Mental Disease (IMD)	16,435.7	500.0	0.0
5301 Inter-Agency Receipts	H&SS - Public Health Admin Svcs (292)		40.0	0.0	0.0
5301 Inter-Agency Receipts	H&SS - Medicaid Services (3234)	Medicaid receipts patient billings for hospital Part A and Part B claim submissions	0.0	10,191.6	5,769.3
5301 Inter-Agency Receipts	H&SS - Nome Youth Facility (266)	Reimbursable Service Agreement: Pharmacy products	0.0	0.0	0.0
5301 Inter-Agency Receipts	H&SS - Medicaid Services (3234)	Disproportionate Share Hospital (DSH) allocation for psychiatric hospitals	0.0	0.0	17,866.3
5301 Inter-Agency Receipts	NOT FOUND (2077)		0.0	14,866.3	0.0
5301 Inter-Agency Receipts	Univ - Department-wide	WWAMI medical students presented through UAA by the University of Washington, Wyoming, Alaska, Montana, and Idaho	0.0	5.5	0.0
<b>5108 Stat Desig (1108 Stat Desig)</b>			<b>2,378.9</b>	<b>14,725.4</b>	<b>10,818.3</b>
5204 Statutory Dsgntd Prgm Rcpts Hlth & Hmn Svcs - Chrgrs for Svcs		Psychiatric patient billing for hospital Part A and Part B claim submissions	2,378.9	5,310.0	3,491.2
5204 Statutory Dsgntd Prgm Rcpts Hlth & Hmn Svcs - Chrgrs for Svcs		Veteran's Administration receipts: Psychiatric patient billings for Part A	0.0	1,547.0	1,558.7

**Revenue Detail (1681)**  
**Department of Health and Social Services**

**Component:** Alaska Psychiatric Institute (311)

Revenue Type (OMB Fund Code) Revenue Source	Component	Comment	FY2020 Actuals	FY2021 Management Plan	FY2022 Governor
5204 Statutory Dsgntd Prgm Rcpts Hlth & Hmn Svcs - Chrgs for Svcs		and Part B claim submissions Medicare Receipts: Psychiatric patient billings for hospital Part A and Part B claim submissions	0.0	7,560.0	5,560.0
5204 Statutory Dsgntd Prgm Rcpts Hlth & Hmn Svcs - Chrgs for Svcs		Telebehavioral Health Clinic billing for services provided through agreements with third-party facilities	0.0	298.7	198.7
5204 Statutory Dsgntd Prgm Rcpts Hlth & Hmn Svcs - Chrgs for Svcs		Other third-party revenues including reimbursement for recycles scrap materials	0.0	9.7	9.7
<b>6004 Gen Fund (1004 Gen Fund)</b>			<b>0.0</b>	<b>2,827.7</b>	<b>0.0</b>
6047 General Fund - Miscellaneous			0.0	2,827.7	0.0
<b>6037 GF/MH (1037 GF/MH)</b>			<b>0.0</b>	<b>11,652.9</b>	<b>11,712.1</b>
6123 General Fund Mental Health - Miscellaneous			0.0	11,652.9	11,712.1

**Inter-Agency Services (1682)**  
**Department of Health and Social Services**

**Component:** Alaska Psychiatric Institute (311)

	FY2020 Actuals	FY2021 Management Plan	FY2022 Governor
<b>Component Totals</b>	<b>2,843.7</b>	<b>1,610.3</b>	<b>1,610.3</b>
With Department of Administration	2,152.0	599.2	599.2
With Department of Health and Social Services	411.3	757.6	757.6
With Department of Law	251.0	230.2	230.2
With Department of Transportation/Public Facilities	21.8	23.3	23.3
With Office of the Governor	5.4	0.0	0.0
With Department of Labor and Workforce Development	2.2	0.0	0.0

Object Class	Servicing Agency	Explanation	FY2020 Actuals	FY2021 Management Plan	FY2022 Governor
3017 Inter-Agency Information Technology Non-Telecommunications	Admin - Department-wide	Inter-agency Information Technology Non-Telecommunications expenditures	1,709.5	0.0	0.0
3017 Inter-Agency Information Technology Non-Telecommunications	H&SS - Administrative Support Svcs (320)	Reimbursable Service Agreement: IT chargeback for business applications	0.0	394.0	394.0
3017 Inter-Agency Information Technology Non-Telecommunications	H&SS - Information Technology Services (2754)	Reimbursable Service Agreement: IT Chargeback for Customer Services	0.0	202.0	202.0
3018 Inter-Agency Information Technology Telecommunications	Admin - Department-wide	Reimbursable Service Agreement: MICS computer service usage, telecommunications phone (ETS)	95.4	370.0	370.0
3018 Inter-Agency Information Technology Telecommunications	Law - Department-wide	Reimbursable Service Agreement: HIPAA compliance and regulatory legal aid	0.0	2.6	2.6
3021 Inter-Agency Mail	Admin - Department-wide	Reimbursable Service Agreement: Inter-agency mail services	0.0	3.5	3.5
3022 Inter-Agency Human Resources	Admin - Department-wide	Reimbursable Service Agreement: Human Resource chargeback	250.7	165.0	165.0
3024 Inter-Agency Legal	Law - Department-wide	Reimbursable Service Agreement: API dedicated attorney and specific legal costs.	251.0	227.6	227.6
3026 Inter-Agency Insurance	Admin - Department-wide	Reimbursable Service Agreement:	67.9	60.0	60.0

**Inter-Agency Services (1682)**  
**Department of Health and Social Services**

**Component:** Alaska Psychiatric Institute (311)

<b>Object Class</b>	<b>Servicing Agency</b>	<b>Explanation</b>	<b>FY2020 Actuals</b>	<b>FY2021 Management Plan</b>	<b>FY2022 Governor</b>
		Risk management/property and malpractice insurance			
3027	Inter-Agency Financial	Admin - Department-wide Inter-agency financial services	25.8	0.0	0.0
3028	Inter-Agency Americans with Disabilities Act Compliance	Admin - Department-wide Reimbursable Service Agreement: ADA Compliance	2.7	0.6	0.6
3029	Inter-Agency Education/Training	Admin - Department-wide Reimbursable Service Agreement: Inter-agency chargeback for training costs associated with State of Alaska courses	0.0	0.1	0.1
3036	Inter-Agency Safety	H&SS - Residential Licensing (245) Reimbursable Service Agreement: Costs associated with residential licensing	4.8	11.6	11.6
3037	State Equipment Fleet	Trans - Department-wide Reimbursable Service Agreement: Vehicle repairs and maintenance	21.8	23.3	23.3
3038	Inter-Agency Management/Consulting	Gov - Department-wide Inter-agency management/consulting services	5.4	0.0	0.0
3038	Inter-Agency Management/Consulting	H&SS - Administrative Support Svcs (320) Reimbursable Service Agreement: Department Support Services Chargeback	146.9	150.0	150.0
3038	Inter-Agency Management/Consulting	H&SS - Commissioner's Office (317) Inter-agency management/consulting services	237.4	0.0	0.0
3038	Inter-Agency Management/Consulting	H&SS - Facilities Management (2020) Inter-agency management/consulting services	4.0	0.0	0.0
3038	Inter-Agency Management/Consulting	H&SS - Public Affairs (2874) Inter-agency management/consulting services	18.2	0.0	0.0
3038	Inter-Agency Management/Consulting	Labor - Department-wide Inter-agency management/consulting services	2.2	0.0	0.0

**Personal Services Expenditure Detail**  
**Department of Health and Social Services**

**Scenario:** FY2022 Governor (17280)  
**Component:** Alaska Psychiatric Institute (311)  
**RDU:** Alaska Psychiatric Institute (692)

PCN	Job Class Title	Time Status	Retire Code	Barg Unit	Location	Salary Sched	Range / Step	Comp Months	Split / Count	Annual Salaries	COLA	Premium Pay	Annual Benefits	Total Costs	UGF Amount
06-#311	Director of Clinical Services	NP	A	XE	Anchorage	N00	24A	12.0		172,800	0	0	41,143	213,943	76,592
06-?084	Psy Nur Asst IV	FT	A	GP	Anchorage	100	14A / C	12.0		47,073	640	0	35,765	83,478	29,885
06-?086	Research Analyst I	FT	A	GP	Anchorage	100	13A / C	12.0		44,299	603	0	34,765	79,667	28,521
06-?092	Stipend Recipient	NP	N	XE	Anchorage	99	0A	12.0		0	0	0	0	0	0
06-?155	Psy Nur Asst IV	FT	A	GP	Anchorage	100	14A / C	12.0		48,653	662	0	36,335	85,650	30,663
06-?157	Psy Nur Asst IV	FT	A	GP	Anchorage	100	14A / C	12.0		48,653	662	0	36,335	85,650	30,663
06-?160	Psy Nur Asst IV	FT	A	GP	Anchorage	100	14A / C	12.0		48,653	662	0	36,335	85,650	30,663
06-?161	Psy Nur Asst IV	FT	A	GP	Anchorage	100	14A / C	12.0		48,653	662	0	36,335	85,650	30,663
06-?166	Psy Nur Asst IV	FT	A	GP	Anchorage	100	14C / D	12.0		50,408	686	0	36,967	88,061	31,526
06-?167	Psy Nur Asst IV	FT	A	GP	Anchorage	100	14A / C	12.0		48,653	662	0	36,335	85,650	30,663
06-?168	Psy Nur Asst II	FT	A	GP	Anchorage	100	11A / C	12.0		40,053	545	0	33,233	73,831	26,432
06-?176	Mental Health Clinician III	FT	A	GP	Anchorage	100	21A / B	12.0		75,075	1,021	0	45,862	121,958	43,661
06-?180	Sa & Bh Couns	FT	A	GP	Anchorage	100	17A / B	12.0		58,110	791	0	39,745	98,646	35,315
06-?181	Sa & Bh Couns	FT	A	GP	Anchorage	100	17A / B	12.0		57,028	776	0	39,355	97,159	34,783
06-?190	Stipend Recipient	NP	N	XE	Anchorage	99	0A	2.0		0	0	0	0	0	0
06-0482	Supply Technician II	FT	A	GP	Anchorage	100	12B / C	12.0		42,235	575	0	34,020	76,830	27,505
06-0504	Chief Op Officer	FT	A	XE	Anchorage	N00	24P / Q	12.0		137,475	0	0	68,260	205,735	73,653
06-0669	Accountant III	FT	A	SS	Anchorage	100	18J	12.0		78,125	0	0	47,002	125,127	44,796
06-2220	Accounting Clerk	FT	A	GP	Anchorage	100	10K / L	12.0		47,223	643	0	35,819	83,685	29,959
06-2221	Mental Health Clinician III	FT	A	GP	Anchorage	100	21C / D	12.0		80,550	1,096	0	47,837	129,483	46,355
06-2222	Staff Psychiatrist/No Brd Cert	FT	A	XE	Anchorage	N00	28A	12.0		273,000	0	5,000	110,645	388,645	139,135
06-2274	Accounting Technician II	FT	A	GP	Anchorage	100	14B	12.0		47,015	640	0	35,744	83,399	29,857
06-2276	Pro Svcs Sp II	FT	A	GP	Anchorage	100	17A / B	12.0		57,713	785	0	39,602	98,100	35,120
06-2277	Psychiatric Nurse II	FT	A	GP	Anchorage	100	23C / D	12.0		90,835	1,282	3,380	52,764	148,261	53,077
06-2281	Staff Psychiatrist-Board Cert	FT	A	XE	Anchorage	N00	29	12.0		0	0	0	0	0	0
06-2282	Phy Asst/Aprn I	FT	A	GP	Anchorage	100	26E / F	12.0		113,529	1,547	200	59,801	175,077	62,678
06-2284	Psy Nur Asstiii	FT	A	GP	Anchorage	100	12C / D	12.0		42,851	605	1,598	34,819	79,873	28,595
06-2285	Psy Nur Asstiii	FT	A	GP	Anchorage	100	12L / M	12.0		54,293	739	0	38,368	93,400	33,437
06-2286	Psy Nur Asstiii	FT	A	GP	Anchorage	100	12D / E	12.0		44,099	622	1,648	35,287	81,656	29,233
06-2289	Phy Asst/Aprn I	FT	A	GP	Anchorage	100	26J	12.0		129,071	1,759	200	65,405	196,435	70,324
06-2290	Accounting Technician I	FT	A	GP	Anchorage	100	12K / L	12.0		52,589	716	0	37,754	91,059	32,599
06-2292	Psy Nur Asst II	FT	A	GP	Anchorage	100	11A / B	12.0		38,523	543	1,417	33,193	73,676	26,376
06-2293	Phy Asst/Aprn I	FT	A	GP	Anchorage	100	26G	12.0		123,072	1,677	200	63,242	188,191	67,372
06-2297	Psy Nur Asst II	FT	A	GP	Anchorage	100	11B / C	12.0		39,357	555	1,455	33,507	74,874	26,805
06-2302	Staff Psychiatrist/Chief	FT	A	XE	Anchorage	N00	30A	12.0		350,000	0	8,000	134,589	492,589	176,347
06-2303	Pharmacy Technician	FT	A	GP	Anchorage	100	12B / C	12.0		41,831	569	0	33,875	76,275	27,307
06-2308	Mt/Gen Sub I	FT	A	LL	Anchorage	1AA	58J	12.0		45,460	0	0	35,079	80,539	28,833
06-2311	Research Analyst III	FT	A	GP	Anchorage	100	18B	12.0		62,381	849	0	41,285	104,515	37,416

Note: If a position is split, an asterisk (\*) will appear in the Split/Count column. If the split position is also counted in the component, two asterisks (\*\*) will appear in this column. [No valid job title] appearing in the Job Class Title indicates that the PCN has an invalid class code or invalid range for the class code effective date of this scenario.



**Personal Services Expenditure Detail**  
**Department of Health and Social Services**

**Scenario:** FY2022 Governor (17280)  
**Component:** Alaska Psychiatric Institute (311)  
**RDU:** Alaska Psychiatric Institute (692)

PCN	Job Class Title	Time Status	Retire Code	Barg Unit	Location	Salary Sched	Range / Step	Comp Months	Split / Count	Annual Salaries	COLA	Premium Pay	Annual Benefits	Total Costs	UGF Amount
06-2318	Information System Coordinator	FT	A	GP	Anchorage	100	18B / C	12.0		0	0	0	0	0	0
06-2321	Psychiatric Nurse III	FT	A	GP	Anchorage	100	25C / D	12.0		104,864	1,427	0	56,604	162,895	58,316
06-2324	Accounting Clerk	FT	A	GP	Anchorage	100	10G	12.0		42,627	580	0	34,162	77,369	27,698
06-2335	Administrative Officer I	FT	A	SS	Anchorage	100	17J	12.0		73,008	0	0	45,157	118,165	42,303
06-2336	Office Assistant I	FT	A	GP	Anchorage	100	8J / K	12.0		39,960	544	0	33,200	73,704	26,386
06-2337	Psy Nur Asst II	FT	A	GP	Anchorage	100	11A / C	12.0		39,111	571	2,834	33,916	76,432	27,363
06-2338	Psychiatric Nurse II	FT	A	GP	Anchorage	100	23G	12.0		103,584	1,409	0	56,143	161,136	57,687
06-2348	Psychiatric Nurse II	FT	A	GP	Anchorage	100	23A / B	12.0		86,644	1,222	3,158	51,173	142,197	50,907
06-2349	Psychiatric Nurse II	FT	A	GP	Anchorage	100	23E / F	12.0		99,503	1,354	0	54,671	155,528	55,679
06-2367	Pro Svcs Sp II	FT	A	GP	Anchorage	100	17B / C	12.0		59,240	806	0	40,152	100,198	35,871
06-2383	Mental Health Clinician III	FT	A	GP	Anchorage	100	21D / E	12.0		82,826	1,127	0	48,657	132,610	47,474
06-2384	Administrative Assistant I	FT	A	GP	Anchorage	100	12B / C	12.0		41,338	562	0	33,697	75,597	27,064
06-2385	Administrative Assistant II	FT	A	GP	Anchorage	100	14A / C	12.0		0	0	0	0	0	0
06-2391	Med I/S Asst	FT	A	GP	Anchorage	100	10G	12.0		42,627	580	0	34,162	77,369	27,698
06-2425	Paralegal I	FT	A	GP	Anchorage	100	14C / D	12.0		48,755	663	0	36,371	85,789	30,713
06-2426	Administrative Officer I	FT	A	SS	Anchorage	100	17E / F	12.0		70,360	0	0	44,202	114,562	41,013
06-2451	Psychiatric Nurse II	FT	A	GP	Anchorage	100	23G / J	12.0		107,695	1,465	0	57,625	166,785	59,709
06-2452	Psychiatric Nurse II	FT	A	GP	Anchorage	100	23B / C	12.0		88,954	1,210	0	50,867	141,031	50,489
06-2453	Psychiatric Nurse I	FT	A	GP	Anchorage	100	22A / C	12.0		81,929	1,115	0	48,334	131,378	47,033
06-2454	Psychiatric Nurse II	FT	A	GP	Anchorage	100	23A / B	12.0		84,858	1,198	3,158	50,529	139,743	50,028
06-2455	Psychiatric Nurse I	FT	A	GP	Anchorage	100	22A / C	12.0		81,929	1,155	2,952	49,398	135,434	48,485
06-2456	Psychiatric Nurse II	FT	A	GP	Anchorage	100	23B / C	12.0		89,312	1,283	5,000	52,799	148,394	53,125
06-2457	Psychiatric Nurse II	FT	A	GP	Anchorage	100	23A / B	12.0		85,343	1,204	3,158	50,704	140,409	50,266
06-2458	Psychiatric Nurse II	FT	A	GP	Anchorage	100	23A / C	12.0		87,679	1,261	5,000	52,210	146,150	52,322
06-2459	Psychiatric Nurse I	FT	A	GP	Anchorage	100	22A / C	12.0		81,929	1,155	2,952	49,398	135,434	48,485
06-2460	Psychiatric Nurse I	FT	A	GP	Anchorage	100	22A / C	12.0		81,929	1,115	0	48,334	131,378	47,033
06-2461	Psychiatric Nurse II	FT	A	GP	Anchorage	100	23D / E	12.0		96,474	1,313	0	53,579	151,366	54,189
06-2462	Psychiatric Nurse I	FT	A	GP	Anchorage	100	22A / C	12.0		81,929	1,155	2,952	49,398	135,434	48,485
06-2463	Psychiatric Nurse II	FT	A	GP	Anchorage	100	23D / E	12.0		95,883	1,305	0	53,366	150,554	53,898
06-2464	Psychiatric Nurse II	FT	A	GP	Anchorage	100	23E / F	12.0		97,862	1,381	3,619	55,384	158,246	56,652
06-2465	Psychiatric Nurse I	FT	A	GP	Anchorage	100	22B / C	12.0		83,041	1,172	3,061	49,839	137,113	49,087
06-2466	Psychiatric Nurse II	FT	A	GP	Anchorage	100	23A	12.0		84,221	1,189	3,158	50,299	138,867	49,714
06-2467	Psychiatric Nurse II	FT	A	GP	Anchorage	100	23B / C	12.0		88,835	1,209	0	50,824	140,868	50,431
06-2468	Health Program Manager II	FT	A	GP	Anchorage	100	19A / B	12.0		66,506	905	0	42,772	110,183	39,446
06-2469	Psychiatric Nurse II	FT	A	GP	Anchorage	100	23A / B	12.0		86,389	1,175	0	49,942	137,506	49,227
06-2470	Psychiatric Nurse I	FT	A	GP	Anchorage	100	22B / C	12.0		83,041	1,130	0	48,735	132,906	47,580
06-2479	Env Svc Jrny II	FT	A	LL	Anchorage	1AA	60F	12.0		38,743	0	0	32,657	71,400	25,561
06-2480	Office Assistant II	FT	A	GP	Anchorage	100	10C / D	12.0		38,006	517	0	32,495	71,018	25,424

Note: If a position is split, an asterisk (\*) will appear in the Split/Count column. If the split position is also counted in the component, two asterisks (\*\*) will appear in this column. [No valid job title] appearing in the Job Class Title indicates that the PCN has an invalid class code or invalid range for the class code effective date of this scenario.

**Personal Services Expenditure Detail**  
**Department of Health and Social Services**

**Scenario:** FY2022 Governor (17280)  
**Component:** Alaska Psychiatric Institute (311)  
**RDU:** Alaska Psychiatric Institute (692)

PCN	Job Class Title	Time Status	Retire Code	Barg Unit	Location	Salary Sched	Range / Step	Comp Months	Split / Count	Annual Salaries	COLA	Premium Pay	Annual Benefits	Total Costs	UGF Amount
06-2485	Recreation Therapist II	FT	A	GP	Anchorage	100	16C / D	12.0		58,110	791	0	39,745	98,646	35,315
06-2486	Recreation Therapist I	FT	A	GP	Anchorage	100	14B / C	12.0		47,356	644	0	35,867	83,867	30,024
06-2487	Recreation Therapist I	FT	A	GP	Anchorage	100	14C / D	12.0		49,018	667	0	36,466	86,151	30,842
06-2488	Recreation Therapist I	FT	A	GP	Anchorage	100	14A / B	12.0		46,774	636	0	35,657	83,067	29,738
06-2489	Recreation Therapist I	FT	A	GP	Anchorage	100	14C / D	12.0		49,603	675	0	36,677	86,955	31,130
06-2494	Mental Health Clinician III	FT	A	GP	Anchorage	100	21C / D	12.0		81,647	1,111	0	48,232	130,990	46,894
06-2496	Phy Asst/Aprn I	FT	A	GP	Anchorage	100	26F / G	12.0		120,651	1,642	0	62,297	184,590	66,083
06-2501	Mental Health Clinician III	FT	A	GP	Anchorage	100	21C / D	12.0		81,647	1,111	0	48,232	130,990	46,894
06-2502	Mental Health Clinician III	FT	A	GP	Anchorage	100	21F / G	12.0		90,149	1,227	0	51,298	142,674	51,077
06-2503	Mental Health Clinician III	FT	A	GP	Anchorage	100	21B / C	12.0		78,208	1,064	0	46,992	126,264	45,203
06-2520	Psy Nur Asstiii	FT	A	GP	Anchorage	100	12B / C	12.0		41,629	566	0	33,802	75,997	27,207
06-2521	Psy Nur Asstiii	FT	A	GP	Anchorage	100	12B / C	12.0		41,730	568	0	33,838	76,136	27,257
06-2522	Psy Nur Asstiii	FT	A	GP	Anchorage	100	12G / J	12.0		50,547	688	0	37,018	88,253	31,595
06-2523	Psy Nur Asstiii	FT	A	GP	Anchorage	100	12B / C	12.0		41,450	564	0	33,737	75,751	27,119
06-2524	Psy Nur Asst II	FT	N	GP	Anchorage	100	11B / C	12.0		39,183	464	1,455	24,504	65,606	23,487
06-2525	Psy Nur Asst II	FT	A	GP	Anchorage	100	11B / C	12.0		39,449	557	1,455	33,540	75,001	26,850
06-2526	Psy Nur Asstiii	FT	A	GP	Anchorage	100	12B / C	12.0		41,741	589	1,548	34,400	78,278	28,024
06-2527	Psy Nur Asst II	FT	A	GP	Anchorage	100	11A / B	12.0		37,920	535	1,417	32,975	72,847	26,079
06-2528	Psy Nur Asst II	FT	A	GP	Anchorage	100	11B / C	12.0		39,183	533	0	32,920	72,636	26,004
06-2529	Psy Nur Asst II	FT	A	GP	Anchorage	100	11A / C	12.0		39,111	551	1,417	33,405	74,484	26,665
06-2530	Psy Nur Asstiii	FT	A	GP	Anchorage	100	12B / C	12.0		42,347	576	0	34,061	76,984	27,560
06-2531	Psy Nur Asst II	FT	A	GP	Anchorage	100	11A / C	12.0		39,111	532	0	32,894	72,537	25,968
06-2532	Psy Nur Asstiii	FT	A	GP	Anchorage	100	12D / E	12.0		44,226	624	1,648	35,332	81,830	29,295
06-2533	Psy Nur Asstiii	FT	A	GP	Anchorage	100	12B / C	12.0		42,268	575	0	34,032	76,875	27,521
06-2534	Psy Nur Asstiii	FT	A	GP	Anchorage	100	12C	12.0		42,627	580	0	34,162	77,369	27,698
06-2535	Psy Nur Asstiii	FT	A	GP	Anchorage	100	12C / D	12.0		42,851	605	1,598	34,819	79,873	28,595
06-2536	Psy Nur Asst II	FT	A	GP	Anchorage	100	11B / C	12.0		38,978	550	1,455	33,370	74,353	26,618
06-2537	Psy Nur Asstiii	FT	A	GP	Anchorage	100	12C / D	12.0		43,120	587	0	34,339	78,046	27,941
06-2538	Psy Nur Asstiii	FT	A	GP	Anchorage	100	12D / E	12.0		44,480	605	0	34,830	79,915	28,610
06-2539	Psy Nur Asstiii	FT	A	GP	Anchorage	100	12B / C	12.0		42,347	576	0	34,061	76,984	27,560
06-2540	Psy Nur Asstiii	FT	A	GP	Anchorage	100	12C / D	12.0		42,795	582	0	34,222	77,599	27,781
06-2541	Psy Nur Asstiii	FT	A	GP	Anchorage	100	12B / C	12.0		41,674	567	0	33,818	76,059	27,229
06-2542	Psy Nur Asstiii	FT	A	GP	Anchorage	100	12B / C	12.0		41,360	563	0	33,705	75,628	27,075
06-2543	Psy Nur Asst II	FT	A	GP	Anchorage	100	11A / C	12.0		39,111	532	0	32,894	72,537	25,968
06-2544	Psy Nur Asst II	FT	A	GP	Anchorage	100	11B / C	12.0		39,797	541	0	33,141	73,479	26,306
06-2545	Psy Nur Asstiii	FT	A	GP	Anchorage	100	12B / C	12.0		41,674	567	0	33,818	76,059	27,229
06-2546	Psy Nur Asstiii	FT	A	GP	Anchorage	100	12G / J	12.0		49,600	675	0	36,676	86,951	31,129
06-2547	Psy Nur Asstiii	FT	A	GP	Anchorage	100	12B / C	12.0		42,324	576	0	34,052	76,952	27,549

Note: If a position is split, an asterisk (\*) will appear in the Split/Count column. If the split position is also counted in the component, two asterisks (\*\*) will appear in this column. [No valid job title] appearing in the Job Class Title indicates that the PCN has an invalid class code or invalid range for the class code effective date of this scenario.

**Personal Services Expenditure Detail**  
**Department of Health and Social Services**

**Scenario:** FY2022 Governor (17280)  
**Component:** Alaska Psychiatric Institute (311)  
**RDU:** Alaska Psychiatric Institute (692)

PCN	Job Class Title	Time Status	Retire Code	Barg Unit	Location	Salary Sched	Range / Step	Comp Months	Split / Count	Annual Salaries	COLA	Premium Pay	Annual Benefits	Total Costs	UGF Amount
06-2548	Psy Nur Asst II	FT	A	GP	Anchorage	100	11B / C	12.0		40,053	565	1,501	33,775	75,894	27,170
06-2549	Psy Nur Asst II	FT	A	GP	Anchorage	100	11B / C	12.0		39,899	563	1,455	33,703	75,620	27,072
06-2550	Psy Nur Asstiii	FT	A	GP	Anchorage	100	12C / D	12.0		43,973	621	1,648	35,241	81,483	29,171
06-2551	Psy Nur Asstiii	FT	A	GP	Anchorage	100	12B / C	12.0		41,674	567	0	33,818	76,059	27,229
06-2552	Psy Nur Asst II	FT	A	GP	Anchorage	100	11B / C	12.0		39,592	539	0	33,067	73,198	26,205
06-2557	Occupational Therapist I	FT	A	GP	Anchorage	100	17S	12.0		95,667	1,302	0	53,288	150,257	53,792
06-2558	Maint Gen Jrny	FT	A	LL	Anchorage	1AA	54C / D	12.0		49,585	0	0	36,567	86,152	30,842
06-2559	Maint Gen Jrny	FT	A	LL	Anchorage	1AA	54B / C	12.0		48,884	0	0	36,314	85,198	30,501
06-2562	Mental Health Clinician III	FT	A	GP	Anchorage	100	21W	12.0		142,350	1,877	0	70,122	214,349	76,737
06-2563	Mental Health Clinician III	FT	A	GP	Anchorage	100	21C / D	12.0		81,647	1,111	0	48,232	130,990	46,894
06-2564	Mental Health Clinician III	FT	A	GP	Anchorage	100	21G / J	12.0		92,239	1,255	0	52,052	145,546	52,106
06-2565	Mental Health Clinician III	FT	A	GP	Anchorage	100	21C / D	12.0		0	0	0	0	0	0
06-2567	Psy Nur Asst IV	FT	A	GP	Anchorage	100	14C / D	12.0		50,408	686	0	36,967	88,061	31,526
06-2568	Psy Nur Asst IV	FT	A	GP	Anchorage	100	14C / D	12.0		50,408	686	0	36,967	88,061	31,526
06-2569	Psy Nur Asst IV	FT	A	GP	Anchorage	100	14C / D	12.0		50,408	686	0	36,967	88,061	31,526
06-2570	Psy Nur Asst IV	FT	A	GP	Anchorage	100	14C / D	12.0		50,408	686	0	36,967	88,061	31,526
06-2571	Psy Nur Asst IV	FT	A	GP	Anchorage	100	14C / D	12.0		50,408	686	0	36,967	88,061	31,526
06-2572	Psy Nur Asst IV	FT	A	GP	Anchorage	100	14C / D	12.0		50,408	686	0	36,967	88,061	31,526
06-2573	Psy Nur Asst II	FT	A	GP	Anchorage	100	11C / D	12.0		41,282	562	0	33,677	75,521	27,037
06-2574	Human Resource Consultant III	FT	A	KK	Anchorage	200	19D / E	12.0		77,961	0	0	46,943	124,904	44,716
06-5004	Occupational Therapist II	FT	A	SS	Anchorage	100	19T	12.0		114,982	0	0	60,293	175,275	62,749
06-5010	Mental Health Clinician IV	FT	A	SS	Anchorage	100	23C / D	12.0		97,275	0	0	53,908	151,183	54,124
06-5011	Pro Svcs Sp I	FT	A	GP	Anchorage	100	15A / B	12.0		49,852	678	0	36,767	87,297	31,252
06-5012	Bldg Maint Supt	FT	A	SS	Anchorage	99	20N / O	12.0		105,149	0	0	56,747	161,896	57,959
06-5013	Mental Health Clinician III	FT	A	GP	Anchorage	99	21O / P	12.0		113,206	1,540	0	59,612	174,358	62,420
06-5014	Nursing Administrator	FT	A	SS	Anchorage	100	27Q	12.0		168,646	0	0	78,060	246,706	88,321
06-5017	Mental Health Clinician IV	FT	A	SS	Anchorage	100	23R / S	12.0		143,905	0	0	70,655	214,560	76,813
06-5018	Mental Health Clinician II	FT	A	GP	Anchorage	100	19B / C	12.0		67,961	925	0	43,297	112,183	40,162
06-5021	Ast Nurse Admin	FT	A	SS	Anchorage	100	26L / M	12.0		138,674	0	0	68,836	207,510	74,289
06-5027	Mental Health Clinician III	FT	A	GG	Anchorage	100	21M	12.0		103,350	1,406	0	56,058	160,814	57,571
06-5031	Psy Nur Asst II	FT	A	GP	Anchorage	100	11B / C	12.0		39,797	561	1,455	33,666	75,479	27,022
06-5034	Psychiatric Nurse I	FT	A	GP	Anchorage	100	22A / C	12.0		81,929	1,115	0	48,334	131,378	47,033
06-5035	Maint Gen Jrny	FT	A	LL	Anchorage	1AA	54B / C	12.0		48,191	0	0	36,064	84,255	30,163
06-5037	Accounting Technician III	FT	A	GP	Anchorage	100	16D / E	12.0		58,197	792	0	39,776	98,765	35,358
06-5038	Psychiatric Nurse II	FT	A	GP	Anchorage	100	23G / J	12.0		107,338	1,460	0	57,496	166,294	59,533
06-5040	Medical Records Administrator	FT	A	SS	Anchorage	100	17B / C	12.0		61,741	0	0	41,094	102,835	36,815
06-5042	Pro Svcs Sp II	FT	A	GP	Anchorage	100	17B / C	12.0		58,632	798	0	39,933	99,363	35,572

Note: If a position is split, an asterisk (\*) will appear in the Split/Count column. If the split position is also counted in the component, two asterisks (\*\*) will appear in this column. [No valid job title] appearing in the Job Class Title indicates that the PCN has an invalid class code or invalid range for the class code effective date of this scenario.

**Personal Services Expenditure Detail**  
**Department of Health and Social Services**

**Scenario:** FY2022 Governor (17280)  
**Component:** Alaska Psychiatric Institute (311)  
**RDU:** Alaska Psychiatric Institute (692)

PCN	Job Class Title	Time Status	Retire Code	Barg Unit	Location	Salary Sched	Range / Step	Comp Months	Split / Count	Annual Salaries	COLA	Premium Pay	Annual Benefits	Total Costs	UGF Amount
06-5044	Recreation Therapist I	FT	A	GP	Anchorage	100	14C / D	12.0		49,296	671	0	36,566	86,533	30,979
06-5047	Mts/Pb Jrny I	FT	A	LL	Anchorage	1AA	53A / C	12.0		51,129	0	0	37,123	88,252	31,594
06-5050	Psychiatric Nurse II	FT	A	GP	Anchorage	100	23E / F	12.0		96,981	1,320	0	53,762	152,063	54,439
06-5052	Psychiatric Nurse III	FT	A	GP	Anchorage	100	25E / F	12.0		111,693	1,520	0	59,067	172,280	61,676
06-5054	Psychiatric Nurse III	FT	A	SS	Anchorage	500	25D / E	12.0		115,363	0	0	60,430	175,793	62,934
06-5055	Phy Asst/Aprn I	FT	A	GP	Anchorage	100	26G	12.0		129,071	1,759	200	65,405	196,435	70,324
06-5056	Psychiatric Nurse III	FT	A	SS	Anchorage	500	25E / F	12.0		119,356	0	0	61,870	181,226	64,879
06-5059	Psychiatric Nurse IV	FT	A	SS	Anchorage	100	26J / K	12.0		130,972	0	0	66,059	197,031	70,537
06-5064	Mt/Gen Sub II	FT	A	LL	Anchorage	1AA	56C / D	12.0		45,134	0	0	34,962	80,096	28,674
06-5068	Psychiatric Nurse III	FT	A	SS	Anchorage	500	25D / E	12.0		114,608	0	0	60,158	174,766	62,566
06-5070	Psychiatric Nurse II	FT	A	GP	Anchorage	100	23M	12.0		118,755	1,616	0	61,613	181,984	65,150
06-5072	Psychiatric Nurse I	FT	A	GP	Anchorage	100	22A / C	12.0		81,700	1,152	2,952	49,316	135,120	48,373
06-5073	Psychiatric Nurse II	FT	A	GP	Anchorage	100	23D / E	12.0		95,883	1,305	0	53,366	150,554	53,898
06-5074	Psychiatric Nurse II	FT	A	GP	Anchorage	100	23C / D	12.0		93,444	1,319	3,504	53,750	152,017	54,422
06-5075	Psy Nur Asstiii	FT	A	GP	Anchorage	100	12A / B	12.0		41,148	560	0	33,628	75,336	26,970
06-5076	Psychiatric Nurse I	FT	A	GP	Anchorage	100	22A / C	12.0		81,700	1,152	2,952	49,316	135,120	48,373
06-5078	Psychiatric Nurse I	FT	A	GP	Anchorage	100	22A / C	12.0		81,700	1,180	5,000	50,054	137,934	49,380
06-5083	Psychiatric Nurse II	FT	A	GP	Anchorage	100	23K	12.0		111,384	1,515	0	58,955	171,854	61,524
06-5085	Psychiatric Nurse II	FT	A	GP	Anchorage	100	23L / M	12.0		117,819	1,662	4,312	62,831	186,624	66,811
06-5086	Psychiatric Nurse I	FT	A	GP	Anchorage	100	22A / C	12.0		81,700	1,152	2,952	49,316	135,120	48,373
06-5087	Psy Nur Asstiii	FT	A	GP	Anchorage	100	12B / C	12.0		41,450	564	0	33,737	75,751	27,119
06-5089	Psychiatric Nurse II	FT	A	GP	Anchorage	100	23J / K	12.0		108,605	1,533	4,045	59,412	173,595	62,147
06-5090	Psychiatric Nurse II	FT	A	GP	Anchorage	100	23F / G	12.0		100,314	1,416	3,756	56,318	161,804	57,926
06-5093	Stock & Parts Services I	FT	A	LL	Anchorage	1AA	57B / C	12.0		41,883	0	0	33,789	75,672	27,091
06-5102	Accounting Technician I	FT	A	GP	Anchorage	100	12A / C	12.0		41,447	564	0	33,736	75,747	27,117
06-5104	Med I/S Asst	FT	A	GP	Anchorage	100	10C / D	12.0		38,006	517	0	32,495	71,018	25,424
06-5106	Psychiatric Nurse III	FT	A	GP	Anchorage	100	25C / E	12.0		107,907	1,512	3,237	58,869	171,525	61,406
06-5108	Psy Nur Asstiii	FT	A	GP	Anchorage	100	12B / C	12.0		42,627	580	0	34,162	77,369	27,698
06-5109	Psychiatric Nurse II	FT	A	GP	Anchorage	100	23A / B	12.0		87,282	1,232	3,273	51,444	143,231	51,277
06-5110	Health Program Manager IV	FT	A	SS	Anchorage	100	23A	12.0		89,045	0	5,000	52,743	146,788	52,550
06-5111	Mental Health Clinician II	FT	A	GP	Anchorage	100	19A / C	12.0		66,853	910	0	42,898	110,661	39,617
06-5112	Psy Nur Asstiii	FT	A	GG	Anchorage	99	12Q / R	12.0		64,850	915	2,412	43,045	111,222	39,818
06-5113	Psy Nur Asstiii	FT	A	GP	Anchorage	100	12D / E	12.0		44,416	627	1,648	35,401	82,092	29,389
06-5117	Psy Nur Asstiii	FT	A	GP	Anchorage	100	12F / G	12.0		48,516	660	0	36,285	85,461	30,595
06-5122	Mental Health Clinician III	FT	A	GP	Anchorage	100	21C / D	12.0		80,428	1,094	0	47,793	129,315	46,295
06-5124	Administrative Assistant I	FT	A	GP	Anchorage	100	12B / C	12.0		41,909	570	0	33,903	76,382	27,345
06-5125	Office Assistant I	FT	A	GP	Anchorage	100	8A / C	12.0		32,538	443	0	30,524	63,505	22,735
06-5126	Office Assistant I	FT	A	GP	Anchorage	100	8A / C	12.0		32,538	443	0	30,524	63,505	22,735

Note: If a position is split, an asterisk (\*) will appear in the Split/Count column. If the split position is also counted in the component, two asterisks (\*\*) will appear in this column. [No valid job title] appearing in the Job Class Title indicates that the PCN has an invalid class code or invalid range for the class code effective date of this scenario.

**Personal Services Expenditure Detail**  
**Department of Health and Social Services**

**Scenario:** FY2022 Governor (17280)  
**Component:** Alaska Psychiatric Institute (311)  
**RDU:** Alaska Psychiatric Institute (692)

PCN	Job Class Title	Time Status	Retire Code	Barg Unit	Location	Salary Sched	Range / Step	Comp Months	Split / Count	Annual Salaries	COLA	Premium Pay	Annual Benefits	Total Costs	UGF Amount
06-5130	Psychiatric Nurse I	FT	A	GP	Anchorage	100	22A / C	12.0		81,929	1,195	5,904	50,463	139,491	49,938
06-5131	Office Assistant I	FT	A	GP	Anchorage	100	8C / D	12.0		33,736	476	1,253	31,407	66,872	23,940
06-5139	Psy Nur Asstiii	FT	A	GP	Anchorage	100	12J / K	12.0		51,134	722	1,901	37,915	91,672	32,819
06-5140	Psy Nur Asst IV	FT	A	GG	Anchorage	100	14A / C	12.0		47,336	644	0	35,860	83,840	30,015
06-5143	Psy Nur Asst IV	FT	A	GP	Anchorage	100	14D / E	12.0		51,692	703	0	37,430	89,825	32,157
06-5145	Phy Asst/Aprnii	FT	A	GP	Anchorage	99	27O	12.0		158,205	2,082	2,000	75,493	237,780	85,125
06-5146	Psy Nur Asstiii	FT	A	GP	Anchorage	100	12B / C	12.0		42,122	594	1,548	34,538	78,802	28,211
06-5148	Psychiatric Nurse III	FT	A	GP	Anchorage	100	25B / C	12.0		103,157	1,404	0	55,989	160,550	57,477
06-5149	Psychiatric Nurse II	FT	A	GP	Anchorage	100	23A / B	12.0		87,001	1,227	3,158	51,302	142,688	51,082
06-5152	Psychiatric Nurse III	FT	A	GP	Anchorage	100	25J	12.0		124,293	1,691	0	63,610	189,594	67,875
06-5153	Psychiatric Nurse II	FT	A	GP	Anchorage	100	23K / L	12.0		114,255	1,555	0	59,991	175,801	62,937
06-5154	Psychiatric Nurse I	FT	A	GP	Anchorage	100	22A / C	12.0		81,929	1,115	0	48,334	131,378	47,033
06-5155	Psy Nur Asstiii	FT	A	GP	Anchorage	100	12D / E	12.0		44,923	634	1,648	35,584	82,789	29,639
06-5156	Psy Nur Asstiii	FT	A	GP	Anchorage	100	12C	12.0		42,627	580	0	34,162	77,369	27,698
06-5157	Psychiatric Nurse II	FT	A	GP	Anchorage	100	23B / C	12.0		88,715	1,207	0	50,781	140,703	50,372
06-5158	Psychiatric Nurse II	FT	A	GP	Anchorage	100	23G / J	12.0		105,908	1,494	3,884	58,381	169,667	60,741
06-5159	Administrative Assistant II	FT	A	GP	Anchorage	100	14B / C	12.0		47,697	649	0	35,990	84,336	30,192
06-5164	Administrative Assistant III	FT	A	GP	Anchorage	100	15A / B	12.0		50,115	682	0	36,862	87,659	31,382
06-5167	Env Svc Jrny II	FT	A	LL	Anchorage	1AA	60P	12.0		50,118	0	0	36,759	86,877	31,102
06-5168	Env Svc Jrny II	FT	A	LL	Anchorage	1AA	60D	12.0		36,164	0	0	31,727	67,891	24,305
06-5173	Office Assistant II	FT	A	GP	Anchorage	100	10C / D	12.0		38,006	517	0	32,495	71,018	25,424
06-5175	Psy Nur Asstiii	FT	A	GP	Anchorage	100	12B / C	12.0		41,618	566	0	33,798	75,982	27,202
06-5176	Office Assistant I	FT	A	GP	Anchorage	100	8B / C	12.0		33,216	452	0	30,768	64,436	23,068
06-5179	Office Assistant I	FT	A	GP	Anchorage	100	8A / C	12.0		32,538	443	0	30,524	63,505	22,735
06-5180	Psy Nur Asstiii	FT	A	GP	Anchorage	100	12C / D	12.0		43,076	608	1,598	34,900	80,182	28,705
06-5182	Psy Nur Asst II	FT	A	GP	Anchorage	100	11A / C	12.0		39,111	532	0	32,894	72,537	25,968
06-5183	Psy Nur Asst IV	FT	A	GP	Anchorage	100	14M	12.0		64,155	873	0	41,925	106,953	38,289
06-5184	Training Specialist II	FT	A	GP	Anchorage	100	18D / E	12.0		68,050	926	0	43,329	112,305	40,205
06-5185	Psy Nur Asstiii	FT	A	GP	Anchorage	100	12A / C	12.0		40,804	576	1,501	34,046	76,927	27,540
06-5187	Psy Nur Asstiii	FT	A	GP	Anchorage	100	12B / C	12.0		42,347	597	1,548	34,619	79,111	28,322
06-5188	Psy Nur Asstiii	FT	A	GP	Anchorage	100	12C / D	12.0		43,412	591	0	34,445	78,448	28,084
06-5189	Psy Nur Asstiii	FT	A	GP	Anchorage	99	12N / O	12.0		59,055	833	2,182	40,872	102,942	36,853
06-5190	Psy Nur Asstiii	FT	A	GP	Anchorage	100	12J / K	12.0		51,410	725	1,901	38,014	92,050	32,954
06-5191	Mental Health Clinician I	FT	A	GP	Anchorage	100	17B	12.0		58,110	811	1,500	40,286	100,707	36,053
06-5192	Mental Health Clinician II	FT	A	GP	Anchorage	100	19A / B	12.0		66,710	908	0	42,846	110,464	39,546
06-5193	Psy Nur Asstiii	FT	A	GP	Anchorage	100	12B / C	12.0		42,526	600	1,548	34,683	79,357	28,410
06-5194	Psy Nur Asst II	FT	A	GP	Anchorage	100	11B / C	12.0		39,797	541	0	33,141	73,479	26,306
06-5195	Psy Nur Asstiii	FT	A	GP	Anchorage	100	12D / E	12.0		44,289	625	1,648	35,355	81,917	29,326

Note: If a position is split, an asterisk (\*) will appear in the Split/Count column. If the split position is also counted in the component, two asterisks (\*\*) will appear in this column. [No valid job title] appearing in the Job Class Title indicates that the PCN has an invalid class code or invalid range for the class code effective date of this scenario.

**Personal Services Expenditure Detail**  
**Department of Health and Social Services**

**Scenario:** FY2022 Governor (17280)  
**Component:** Alaska Psychiatric Institute (311)  
**RDU:** Alaska Psychiatric Institute (692)

PCN	Job Class Title	Time Status	Retire Code	Barg Unit	Location	Salary Sched	Range / Step	Comp Months	Split / Count	Annual Salaries	COLA	Premium Pay	Annual Benefits	Total Costs	UGF Amount
06-5196	Psy Nur Asst II	FT	A	GP	Anchorage	100	11A / C	12.0		39,016	550	1,417	33,370	74,353	26,618
06-5197	Psy Nur Asstiii	FT	A	GP	Anchorage	100	12G	12.0		48,653	662	0	36,335	85,650	30,663
06-5199	Psychiatric Nurse III	FT	A	GP	Anchorage	100	25P / Q	12.0		154,250	2,004	0	73,711	229,965	82,328
06-5200	Psy Nur Asst IV	FT	A	GP	Anchorage	100	14D / E	12.0		51,617	728	1,890	38,085	92,320	33,051
06-5201	Psy Nur Asstiii	FT	A	GP	Anchorage	99	12O / P	12.0		60,486	823	0	40,602	101,911	36,484
06-5202	Env Svc Jrny II	FT	A	LL	Anchorage	1AA	60J	12.0		40,199	0	0	33,182	73,381	26,270
06-5203	Env Svc Jrny I	FT	A	LL	Anchorage	1AA	61J / K	12.0		34,383	0	0	31,085	65,468	23,438
06-5204	Env Svc Jrny I	FT	A	LL	Anchorage	1AA	61O / P	12.0		41,658	0	0	33,708	75,366	26,981
06-5206	Env Svc Jrny I	FT	A	LL	Anchorage	1AA	61E / F	12.0		31,819	0	0	30,160	61,979	22,189
06-5212	Office Assistant IV	FT	A	SS	Anchorage	500	12A / B	12.0		0	0	0	0	0	0
06-5213	Office Assistant I	FT	A	GP	Anchorage	100	8D / E	12.0		35,093	495	1,293	31,911	68,792	24,628
06-5214	Environmental Services, Lead	FT	A	LL	Anchorage	1AA	58O / P	12.0		54,909	0	0	38,486	93,395	33,435
06-5215	Env Svc Jrny II	FT	A	LL	Anchorage	1AA	60J	12.0		40,199	0	0	33,182	73,381	26,270
06-5216	Env Svc Jrny I	FT	A	LL	Anchorage	1AA	61A / C	12.0		28,593	0	0	28,997	57,590	20,617
06-5217	Env Svc Jrny II	FT	A	LL	Anchorage	1AA	60D / E	12.0		37,327	0	0	32,146	69,473	24,871
06-5222	Env Svc Jrny I	FT	A	LL	Anchorage	1AA	61D / E	12.0		31,457	0	0	30,030	61,487	22,012
06-5225	Office Assistant I	FT	A	GP	Anchorage	100	8B	12.0		32,429	441	0	30,484	63,354	22,681
06-5230	Psy Nur Asst IV	FT	A	GP	Anchorage	100	14G / J	12.0		57,213	778	0	39,421	97,412	34,874
06-5231	Psy Nur Asstiii	FT	A	GP	Anchorage	100	12J / K	12.0		51,479	700	0	37,354	89,533	32,053
06-5232	Psy Nur Asst IV	FT	A	GP	Anchorage	100	14G	12.0		55,946	761	0	38,964	95,671	34,250
06-5233	Psy Nur Asstiii	FT	A	GP	Anchorage	100	12G / J	12.0		48,997	691	1,824	37,116	88,628	31,729
06-5235	Psy Nur Asstiii	FT	A	GP	Anchorage	100	12C / D	12.0		43,636	594	0	34,525	78,755	28,194
06-5245	Mental Health Clinician IV	FT	A	SS	Anchorage	99	23P / Q	12.0		136,267	0	0	67,968	204,235	73,116
06-5248	Psychiatric Nurse III	FT	A	GP	Anchorage	100	25G / J	12.0		123,879	1,686	0	63,461	189,026	67,671
06-5249	Occupational Therapist I	FT	A	GP	Anchorage	100	17A / C	12.0		58,248	793	0	39,795	98,836	35,383
06-5253	Mental Health Clinician II	FT	A	GP	Anchorage	100	19A / B	12.0		66,246	922	1,500	43,220	111,888	40,056
06-5259	Psy Nur Asstiii	FT	A	GP	Anchorage	100	12D / E	12.0		45,050	635	1,648	35,630	82,963	29,701
06-5260	Psy Nur Asstiii	FT	A	GP	Anchorage	100	12L	12.0		54,074	763	2,027	39,020	95,884	34,327
06-5261	Pro Svcs Sp III	FT	A	GP	Anchorage	100	19C / D	12.0		70,390	958	0	44,173	115,521	41,357
06-5262	Mental Health Clinician III	FT	A	GP	Anchorage	100	21C / D	12.0		80,428	1,094	0	47,793	129,315	46,295
06-5263	Mental Health Clinician III	FT	A	GP	Anchorage	100	21G / J	12.0		90,773	1,235	0	51,523	143,531	51,384
06-5264	Administrative Assistant I	FT	A	GP	Anchorage	100	12C / D	12.0		42,795	582	0	34,222	77,599	27,781
06-5267	Psychiatric Nurse II	FT	A	GP	Anchorage	100	23C / D	12.0		92,071	1,253	0	51,991	145,315	52,023
06-5268	Psychiatric Nurse IV	FT	A	SS	Anchorage	100	26B / C	12.0		109,764	0	0	58,411	168,175	60,207
06-5271	Mental Health Clinician III	FT	A	GG	Anchorage	100	21C / D	12.0		81,647	1,111	0	48,232	130,990	46,894
06-5273	Psy Nur Asst IV	FT	A	GP	Anchorage	100	14L	12.0		62,127	845	0	41,193	104,165	37,291
06-5274	Psy Nur Asst II	FT	A	GP	Anchorage	100	11A / C	12.0		39,111	551	1,417	33,405	74,484	26,665
06-5275	Psy Nur Asst IV	FT	A	GP	Anchorage	100	14G / J	12.0		57,896	816	2,097	40,424	101,233	36,241

Note: If a position is split, an asterisk (\*) will appear in the Split/Count column. If the split position is also counted in the component, two asterisks (\*\*) will appear in this column. [No valid job title] appearing in the Job Class Title indicates that the PCN has an invalid class code or invalid range for the class code effective date of this scenario.

**Personal Services Expenditure Detail**  
**Department of Health and Social Services**

**Scenario:** FY2022 Governor (17280)  
**Component:** Alaska Psychiatric Institute (311)  
**RDU:** Alaska Psychiatric Institute (692)

PCN	Job Class Title	Time Status	Retire Code	Barg Unit	Location	Salary Sched	Range / Step	Comp Months	Split / Count	Annual Salaries	COLA	Premium Pay	Annual Benefits	Total Costs	UGF Amount
06-5276	Mental Health Clinician III	FT	A	GP	Anchorage	100	21C / D	12.0		80,428	1,094	0	47,793	129,315	46,295
06-5277	Mental Health Clinician III	FT	A	GP	Anchorage	100	21J	12.0		93,893	1,278	0	52,648	147,819	52,919
06-5278	Psy Nur Asstiii	FT	A	GP	Anchorage	100	12J / K	12.0		51,479	700	0	37,354	89,533	32,053
06-5279	Psy Nur Asstiii	FT	A	GP	Anchorage	100	12G	12.0		48,653	662	0	36,335	85,650	30,663
06-5280	Psy Nur Asst IV	FT	A	GP	Anchorage	100	14A / B	12.0		46,850	661	1,706	36,300	85,517	30,615
06-5282	Staff Psychiatrist-Board Cert	FT	A	XE	Anchorage	N00	29	12.0		273,000	0	0	109,149	382,149	136,809
06-5283	Staff Psychiatrist-Board Cert	FT	A	XE	Anchorage	N00	29	12.0		273,000	0	5,000	110,645	388,645	139,135
06-5284	Medical Officer	FT	A	XE	Anchorage	N00	29	12.0		258,005	0	0	104,661	362,666	129,834
06-5287	Staff Psychiatrist/No Brd Cert	FT	A	XE	Anchorage	N00	28A	12.0		262,500	0	0	106,006	368,506	131,925
06-5294	Psy Nur Asstiii	FT	A	GP	Anchorage	100	12A / B	12.0		41,077	579	1,501	34,144	77,301	27,674
06-5295	Psy Nur Asstii	FT	A	GP	Anchorage	100	12L	12.0		54,074	736	0	38,289	93,099	33,330
06-5296	Psy Nur Asst II	FT	A	GP	Anchorage	100	11A / B	12.0		38,394	542	1,417	33,146	73,499	26,313
06-5297	Psy Nur Asst II	FT	A	GP	Anchorage	100	11A / B	12.0		38,394	522	0	32,635	71,551	25,615
06-5298	Psy Nur Asstiii	FT	A	GP	Anchorage	100	12C / D	12.0		42,683	602	1,598	34,758	79,641	28,512
06-5299	Psy Nur Asstiii	FT	A	GP	Anchorage	100	12B / C	12.0		41,652	588	1,548	34,368	78,156	27,980
06-5300	Psy Nur Asst IV	FT	A	GP	Anchorage	100	14B / C	12.0		47,219	666	1,763	36,453	86,101	30,824
06-5301	Psy Nur Asst IV	FT	A	GP	Anchorage	100	14C / D	12.0		50,042	681	0	36,835	87,558	31,346
06-5302	Psy Nur Asstiii	FT	A	GG	Anchorage	100	12B / C	12.0		41,629	566	0	33,802	75,997	27,207
06-5303	Psy Nur Asstiii	FT	A	GP	Anchorage	100	12J	12.0		50,720	716	1,901	37,765	91,102	32,615
06-5304	Psy Nur Asstiii	FT	A	GP	Anchorage	100	12D / E	12.0		44,036	599	0	34,670	79,305	28,391
06-5305	Psy Nur Asstiii	FT	A	GP	Anchorage	100	12J / K	12.0		52,170	710	0	37,603	90,483	32,393
06-5306	Psy Nur Asstiii	FT	A	GP	Anchorage	100	12C / D	12.0		42,851	583	0	34,242	77,676	27,808
06-5307	Psychiatric Nurse II	FT	A	GP	Anchorage	100	23A / B	12.0		87,001	1,227	3,158	51,302	142,688	51,082
06-5308	Psy Nur Asstiii	FT	A	GP	Anchorage	100	12A / B	12.0		41,282	583	1,548	34,235	77,648	27,798
06-5309	Pro Svcs Sp I	FT	A	GP	Anchorage	100	15A / C	12.0		50,734	690	0	37,085	88,509	31,686
06-5310	Psychiatric Nurse III	FT	A	GP	Anchorage	100	25K	12.0		128,330	1,746	0	65,066	195,142	69,861
06-5311	Mental Health Clinician II	FT	A	GP	Anchorage	100	19F / G	12.0		76,630	1,059	1,200	46,856	125,745	45,017
06-5312	Mts/Bfc Jrny II	FT	A	LL	Anchorage	1AA	51N	12.0		79,378	0	0	47,310	126,688	45,354
06-5315	Staff Psychiatrist-Board Cert	FT	A	XE	Anchorage	N00	29A	12.0		283,500	0	0	112,291	395,791	141,693
06-5317	Paralegal II	FT	A	GP	Anchorage	100	16C / D	12.0		56,126	764	0	39,029	95,919	34,339
06-5319	Industrial Therapist	FT	A	GP	Anchorage	100	16K / L	12.0		71,302	970	0	44,502	116,774	41,805
06-5320	Psy Nur Asstiii	FT	A	GP	Anchorage	100	12L / M	12.0		55,170	751	0	38,685	94,606	33,869
06-5323	Psychiatric Nurse III	FT	A	SS	Anchorage	500	25C / D	12.0		111,415	0	0	59,007	170,422	61,011
06-5324	Psychiatric Nurse II	FT	A	GP	Anchorage	100	23N / O	12.0		125,600	1,709	0	64,082	191,391	68,518
06-5326	Psychiatric Nurse II	FT	A	GP	Anchorage	100	23N	12.0		122,616	1,668	0	63,006	187,290	67,050
06-5329	Psychiatric Nurse II	FT	A	GP	Anchorage	100	23C / D	12.0		92,346	1,302	3,380	53,309	150,337	53,821
06-5330	Project Assistant	FT	A	GP	Anchorage	100	16D / E	12.0		0	0	0	0	0	0
06-5332	Psychiatric Nurse II	FT	A	GP	Anchorage	100	23E / F	12.0		96,677	1,365	3,619	54,957	156,618	56,069

Note: If a position is split, an asterisk (\*) will appear in the Split/Count column. If the split position is also counted in the component, two asterisks (\*\*) will appear in this column. [No valid job title] appearing in the Job Class Title indicates that the PCN has an invalid class code or invalid range for the class code effective date of this scenario.

**Personal Services Expenditure Detail**  
**Department of Health and Social Services**

**Scenario:** FY2022 Governor (17280)  
**Component:** Alaska Psychiatric Institute (311)  
**RDU:** Alaska Psychiatric Institute (692)

PCN	Job Class Title	Time Status	Retire Code	Barg Unit	Location	Salary Sched	Range / Step	Comp Months	Split / Count	Annual Salaries	COLA	Premium Pay	Annual Benefits	Total Costs	UGF Amount
06-5334	Psy Nur Asstiii	FT	A	GP	Anchorage	100	12B / C	12.0		42,179	574	0	34,000	76,753	27,478
06-5335	Psy Nur Asstiii	FT	A	GP	Anchorage	100	12B / C	12.0		42,066	593	1,548	34,518	78,725	28,184
06-5337	Psy Nur Asstiii	FT	A	GP	Anchorage	100	12C / D	12.0		43,973	598	0	34,647	79,218	28,360
06-5338	Mental Health Clinician III	FT	A	GP	Anchorage	100	21C / D	12.0		80,428	1,111	1,200	48,225	130,964	46,885
06-5339	Psychiatric Nurse II	FT	A	GP	Anchorage	100	23C / D	12.0		92,346	1,256	0	52,090	145,692	52,158
06-5340	Psychiatric Nurse II	FT	A	GP	Anchorage	100	23F / G	12.0		103,584	1,409	0	56,143	161,136	57,687
06-5341	Psychiatric Nurse II	FT	A	GP	Anchorage	100	23G	12.0		103,584	1,462	3,884	57,543	166,473	59,597
06-5347	Director of API	FT	A	XE	Anchorage	N00	25F	12.0		250,000	0	0	102,265	352,265	126,111
06-5348	Psy Nur Asstiii	FT	A	GP	Anchorage	100	12C / D	12.0		43,973	621	1,648	35,241	81,483	29,171
06-5349	Psy Nur Asstiii	FT	A	GP	Anchorage	100	12C / D	12.0		43,468	591	0	34,465	78,524	28,112
06-5350	Office Assistant I	FT	A	GP	Anchorage	100	8A / B	12.0		32,078	469	2,361	31,209	66,117	23,670
06-5353	Office Assistant I	FT	A	GP	Anchorage	100	8B / C	12.0		33,216	452	0	30,768	64,436	23,068
06-5354	Human Resource Technician II	FT	A	KK	Anchorage	200	14B / C	12.0		51,700	0	0	37,473	89,173	31,924
06-5355	Psychiatric Nurse I	FT	A	GP	Anchorage	100	22A / C	12.0		82,388	1,161	2,952	49,564	136,065	48,711
06-5356	Psychiatric Nurse I	FT	A	GP	Anchorage	100	22A / C	12.0		81,929	1,115	0	48,334	131,378	47,033
06-5357	Psy Nur Asst IV	FT	A	GP	Anchorage	100	14G / J	12.0		58,188	792	0	39,773	98,753	35,354
06-5358	Psy Nur Asst II	FT	A	GP	Anchorage	100	11A / C	12.0		39,111	532	0	32,894	72,537	25,968
06-5359	Mental Health Clinician III	FT	A	GP	Anchorage	100	21L	12.0		100,094	1,362	0	54,884	156,340	55,970
06-5360	Psy Nur Asstiii	FT	A	GP	Anchorage	100	12M	12.0		55,829	760	0	38,922	95,511	34,193
06-5361	Psy Nur Asstiii	FT	A	GP	Anchorage	100	12G	12.0		48,653	662	0	36,335	85,650	30,663
06-5362	Psy Nur Asstiii	FT	A	GG	Anchorage	99	12R	12.0		66,421	938	2,490	43,640	113,489	40,629
06-5363	Psy Nur Asstiii	FT	A	GP	Anchorage	100	12B / C	12.0		42,066	572	0	33,959	76,597	27,422
06-5364	Env Svc Jrny II	FT	A	LL	Anchorage	1AA	60O	12.0		48,309	0	0	36,107	84,416	30,221
06-5365	Office Assistant I	FT	A	GP	Anchorage	100	8G	12.0		37,791	514	0	32,418	70,723	25,319
06-5368	Staff Psychiatrist/No Brd Cert	FT	A	XE	Anchorage	N00	28A	12.0		273,000	0	5,000	110,645	388,645	139,135
06-5369	Mental Health Clinician III	FT	A	GP	Anchorage	100	21C / D	12.0		80,306	1,093	0	47,749	129,148	46,235
06-5371	Psychiatric Nurse II	FT	A	GP	Anchorage	100	23F	12.0		100,172	1,414	3,756	56,267	161,609	57,856
06-5372	Psychiatric Nurse II	FT	A	GP	Anchorage	100	23L	12.0		115,011	1,682	8,625	63,373	188,691	67,551
06-5373	Psychiatric Nurse II	FT	A	GP	Anchorage	100	23C / D	12.0		92,620	1,260	0	52,189	146,069	52,293
06-5374	Psychiatric Nurse IV	FT	A	SS	Anchorage	100	26M	12.0		143,000	0	0	70,384	213,384	76,392
06-5375	Psychiatric Nurse II	FT	A	GP	Anchorage	100	23D / E	12.0		96,012	1,354	3,504	54,676	155,546	55,686
06-IN1708	Graduate Intern II	NP	N	EE	Anchorage	N00	16A	12.0		52,221	0	0	6,136	58,357	20,892
06-N07099	Mental Health Clinician II	NP	N	GP	Anchorage	100	19A	12.0		160,584	1,795	0	18,869	181,248	64,887
06-N07105	Psy Nur Asst I	NP	N	GP	Anchorage	100	10A	12.0		98,880	1,105	0	11,618	111,603	39,954
06-N07106	Psychiatric Nurse I	NP	N	GP	Anchorage	100	22A	12.0		39,384	440	0	4,628	44,452	15,914
06-N07107	Psychiatric Nurse II	NP	N	GP	Anchorage	100	23A	12.0		84,221	941	0	9,896	95,058	34,031
06-N19007	Psy Nur Asst II	NP	N	GP	Anchorage	100	11A	12.0		111,780	1,249	0	13,134	126,163	45,166

Note: If a position is split, an asterisk (\*) will appear in the Split/Count column. If the split position is also counted in the component, two asterisks (\*\*) will appear in this column. [No valid job title] appearing in the Job Class Title indicates that the PCN has an invalid class code or invalid range for the class code effective date of this scenario.



**Personal Services Expenditure Detail**  
**Department of Health and Social Services**

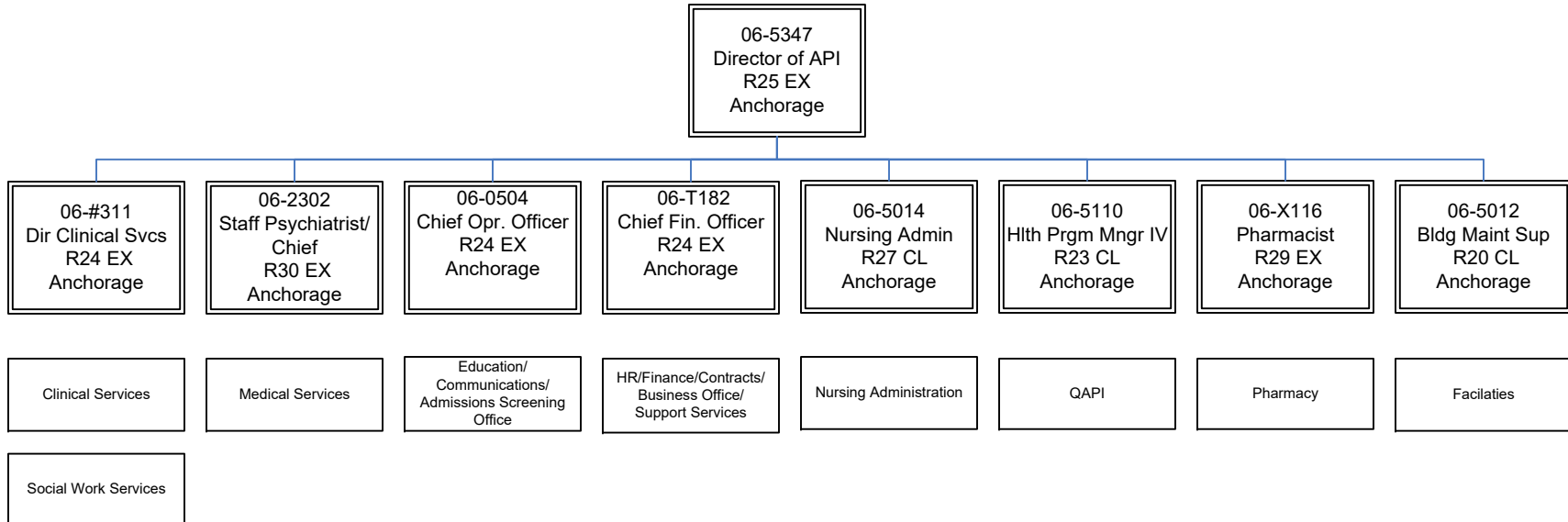
**Scenario:** FY2022 Governor (17280)  
**Component:** Alaska Psychiatric Institute (311)  
**RDU:** Alaska Psychiatric Institute (692)

PCN	Job Class Title	Time Status	Retire Code	Barg Unit	Location	Salary Sched	Range / Step	Comp Months	Split / Count	Annual Salaries	COLA	Premium Pay	Annual Benefits	Total Costs	UGF Amount
06-N19008	Psy Nur Asstiii	NP	N	GP	Anchorage	100	12A / B	12.0		41,282	461	0	4,851	46,594	16,681
06-N19009	Psychiatric Nurse III	NP	N	GP	Anchorage	100	25A	12.0		71,280	797	0	8,375	80,452	28,802
06-T182	Chief Financial Officer	FT	A	XE	Anchorage	N00	24F	12.0		106,451	0	0	57,073	163,524	58,542
06-X115	Pharmacist	FT	A	XE	Anchorage	N00	24A	12.0		137,085	0	0	68,119	205,204	73,463
06-X116	Pharmacist (Lead W/Adv Cert)	FT	A	XE	Anchorage	N00	29A	12.0		137,085	0	0	68,119	205,204	73,463
06-XS001	Stipend Recipient	NP	N	XE	Anchorage	99	0A	12.0		97,200	0	0	11,421	108,621	38,886
													<b>Total Salary Costs:</b>	24,710,812	
													<b>Total COLA:</b>	248,746	
													<b>Total Premium Pay:</b>	243,537	
													<b>Total Benefits:</b>	14,865,907	
													<b>Total Pre-Vacancy:</b>	40,069,002	
													<b>Minus Vacancy Adjustment of 2.20%:</b>	(880,602)	
													<b>Total Post-Vacancy:</b>	39,188,400	
													<b>Plus Lump Sum Premium Pay:</b>	0	
													<b>Personal Services Line 100:</b>	39,188,400	
<b>Total Component Months:</b>		4,056.0													

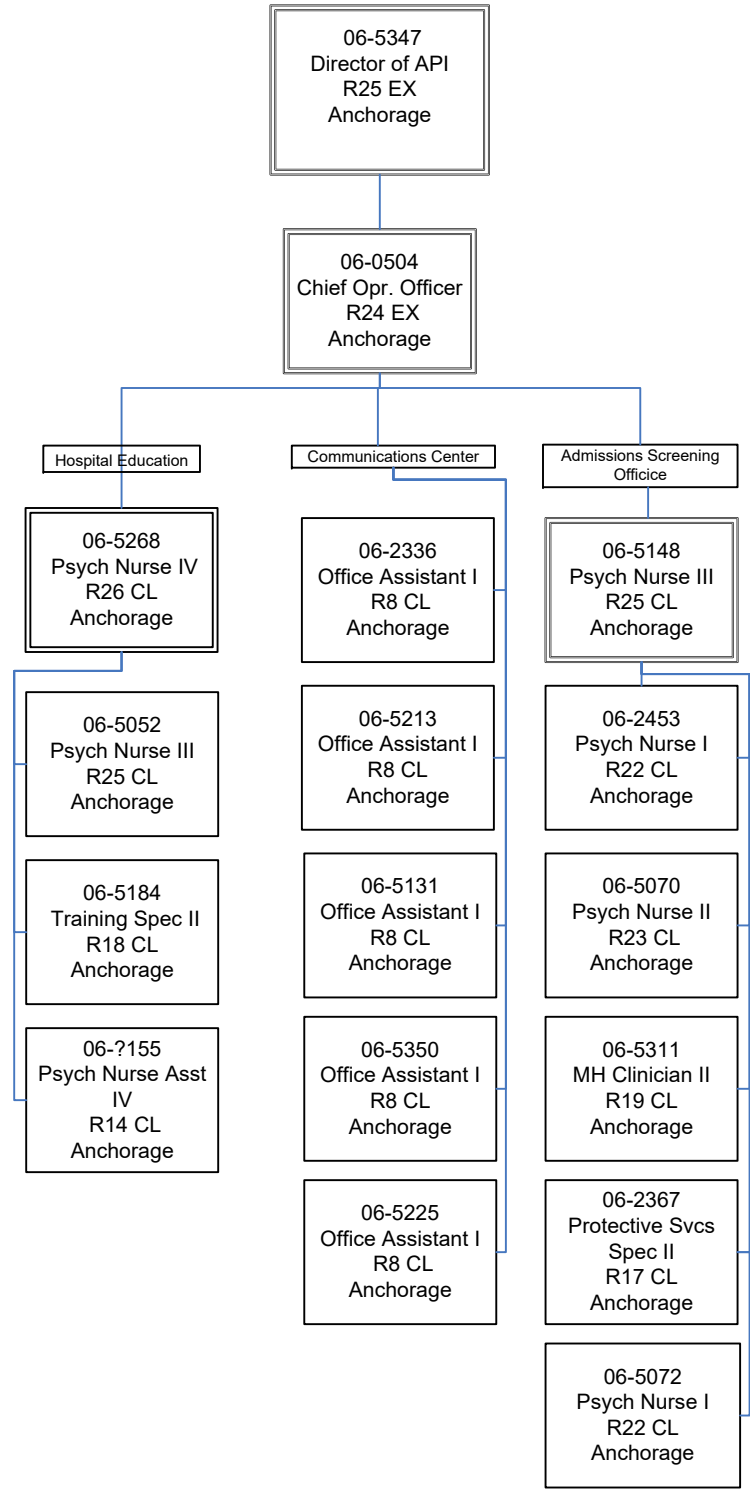
PCN Funding Sources:	Pre-Vacancy	Post-Vacancy	Percent
1004 General Fund Receipts	3,325,727	3,252,637	8.30%
1007 Interagency Receipts	10,417,941	10,188,984	26.00%
1037 General Fund / Mental Health	11,018,976	10,776,811	27.50%
1108 Statutory Designated Program Receipts	9,175,802	8,974,144	22.90%
1268 Mental Health Trust Reserve	6,130,557	5,995,825	15.30%
<b>Total PCN Funding:</b>	<b>40,069,003</b>	<b>39,188,401</b>	<b>100.00%</b>

Note: If a position is split, an asterisk (\*) will appear in the Split/Count column. If the split position is also counted in the component, two asterisks (\*\*) will appear in this column. [No valid job title] appearing in the Job Class Title indicates that the PCN has an invalid class code or invalid range for the class code effective date of this scenario.

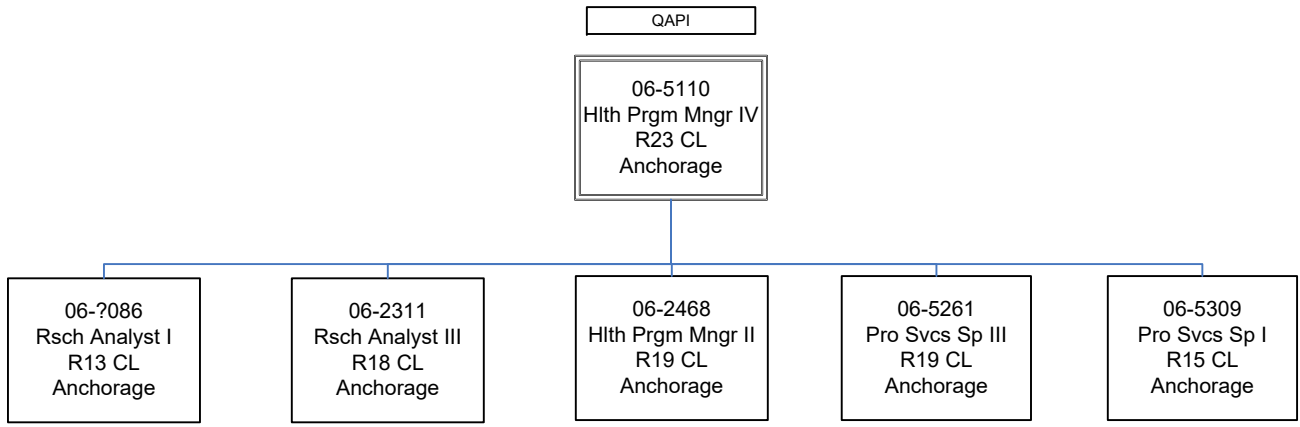
FY2022 Governor's Budget  
 Department of Health and Social Services  
 311 - Alaska Psychiatric Institute  
 Executive Team



FY2022 Governor's Budget  
Department of Health and Social Services  
311 - Alaska Psychiatric Institute  
Education/Comm Center/ ASO



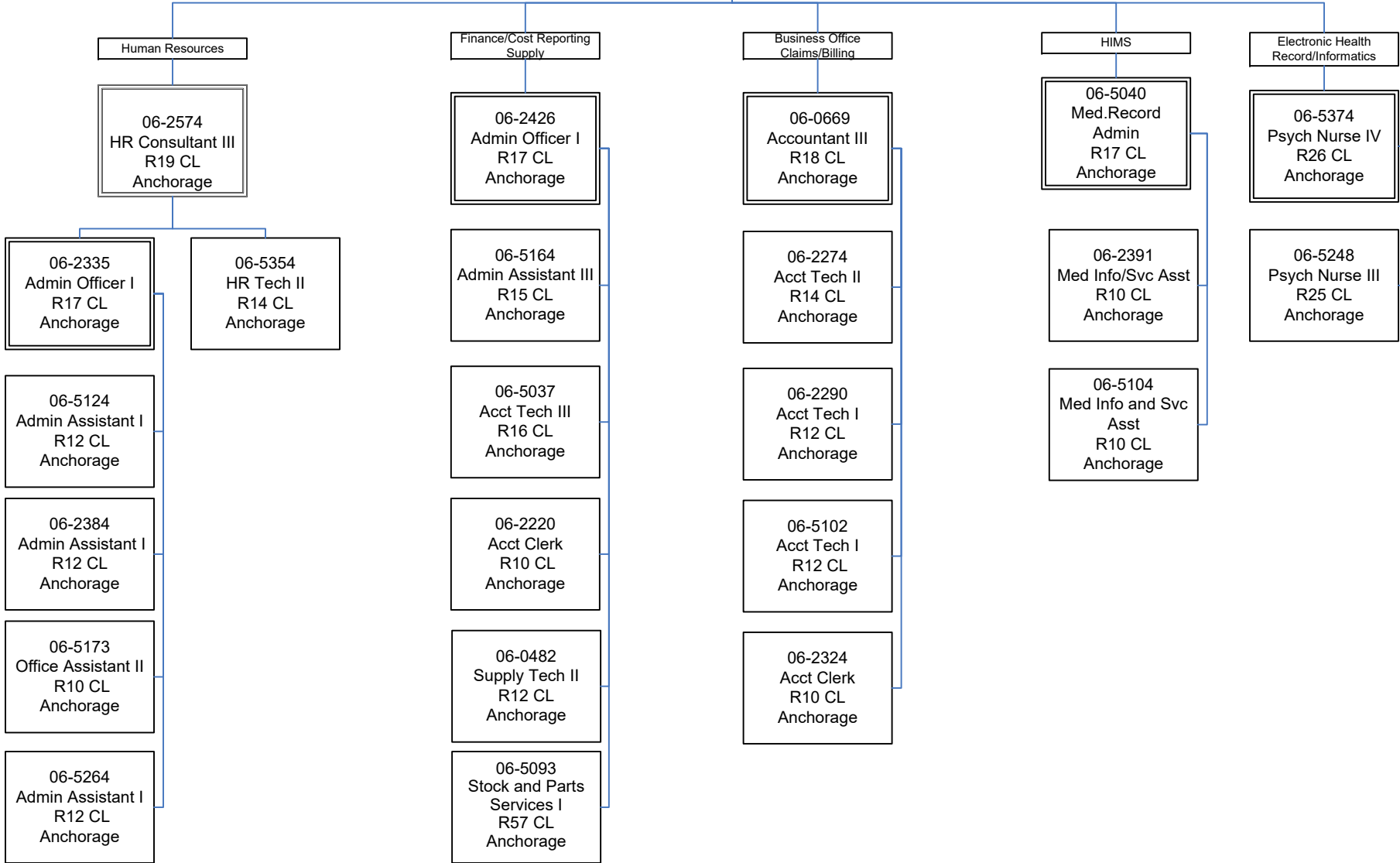
FY2022 Governor's Budget  
Department of Health and Social Services  
311 - Alaska Psychiatric Institute  
QAPI/Recovery Support/P&P



FY2022 Governor's Budget  
Department of Health and Social Services  
311 - Alaska Psychiatric Institute  
HR/Finance/Contracts/Business Office/ Support Services

06-5347  
Director of API  
R25 EX  
Anchorage

06-T182  
Chief Fin. Officer  
R24 EX  
Anchorage



FY2022 Governor's Budget  
Department of Health and Social Services  
311 - Alaska Psychiatric Institute  
Facilities

06-5347  
Chief Exec. Officer  
R25 EX  
Anchorage

Facilities

06-5012  
Blding Maint Supr.  
R20 CL  
Anchorage

06-2480  
Office Assistant II  
R10 CL  
Anchorage

Building Maintenance

Environmental Services

06-5312  
Maint BFC Jrny II  
R51 CL  
Anchorage

06-5214  
Env Svcs Lead  
R58 CL  
Anchorage

06-2308  
Maint Gen Sub I  
R58 CL  
Anchorage

06-5047  
Maint Plumb Jrny I  
R53 CL  
Anchorage

06-2558  
Maint Gen Jrny  
R54 CL  
Anchorage

06-5206  
Env Svcs Jrny I  
R61 CL  
Anchorage

06-5222  
Env Svcs Jrny I  
R61 CL  
Anchorage

06-5216  
Env Svcs Jrny I  
R61 CL  
Anchorage

06-5035  
Maint Gen Jrny  
R54 CL  
Anchorage

06-5064  
Maint Gen Sub II  
R56 CL  
Anchorage

06-2559  
Maint Gen Jrny  
R54 CL  
Anchorage

06-5203  
Env Svcs Jrny I  
R61 CL  
Anchorage

06-5204  
Env Svcs Jrny I  
R61 CL  
Anchorage

06-5167  
Env Svcs Jrny II  
R60 CL  
Anchorage

06-5168  
Env Svcs Jrny II  
R60 CL  
Anchorage

06-5364  
Env Svcs Jrny II  
R60 CL  
Anchorage

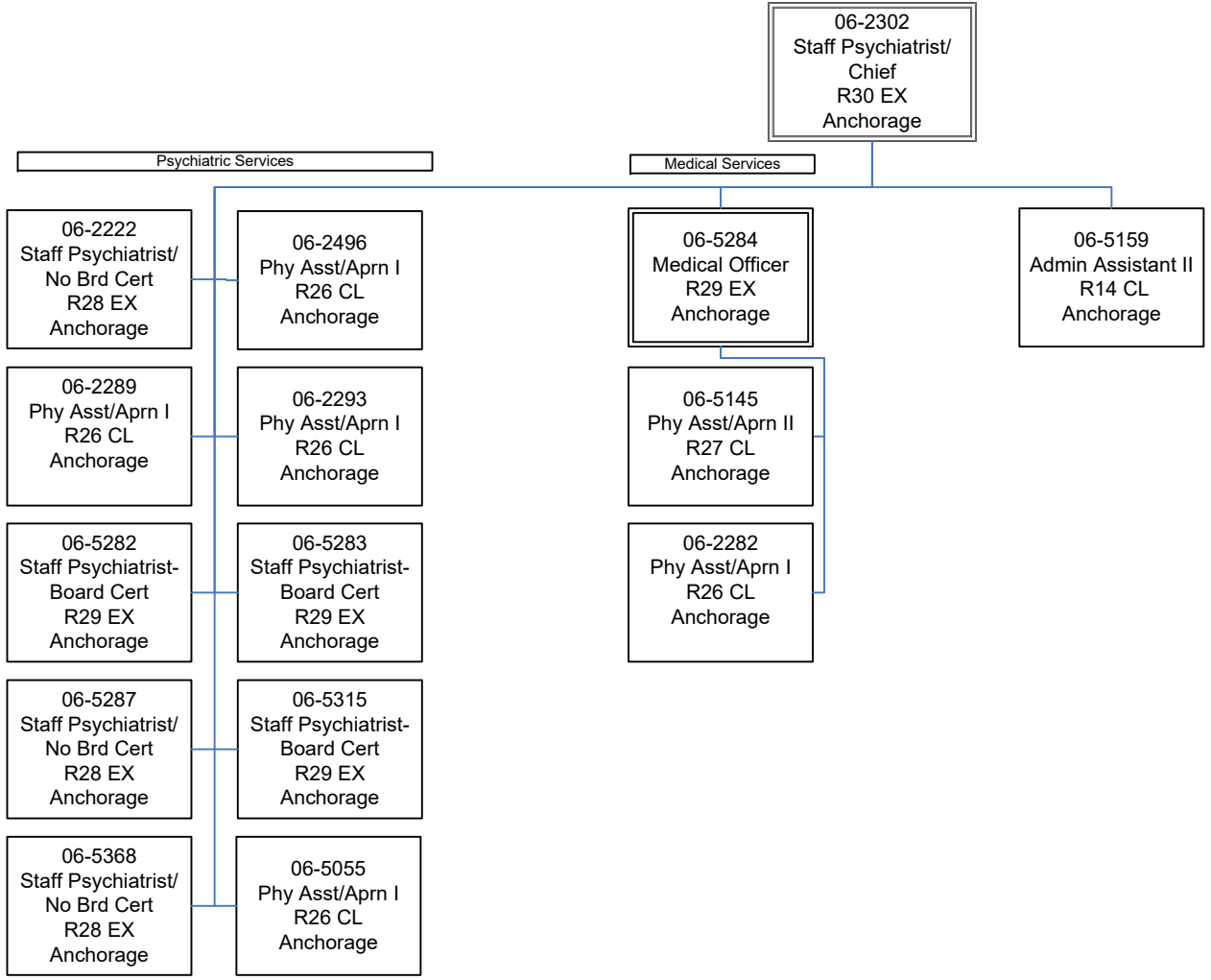
06-5217  
Env Svcs Jrny II  
R60 CL  
Anchorage

06-2479  
Env Svcs Jrny II  
R60 CL  
Anchorage

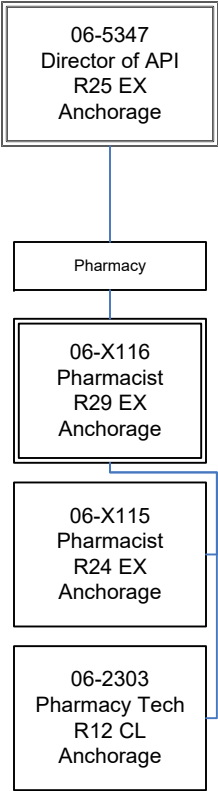
06-5215  
Env Svcs Jrny II  
R60 CL  
Anchorage

06-5202  
Env Svcs Jrny II  
R60 CL  
Anchorage

FY2022 Governor's Budget  
 Department of Health and Social Services  
 311 - Alaska Psychiatric Institute  
 Medical Services



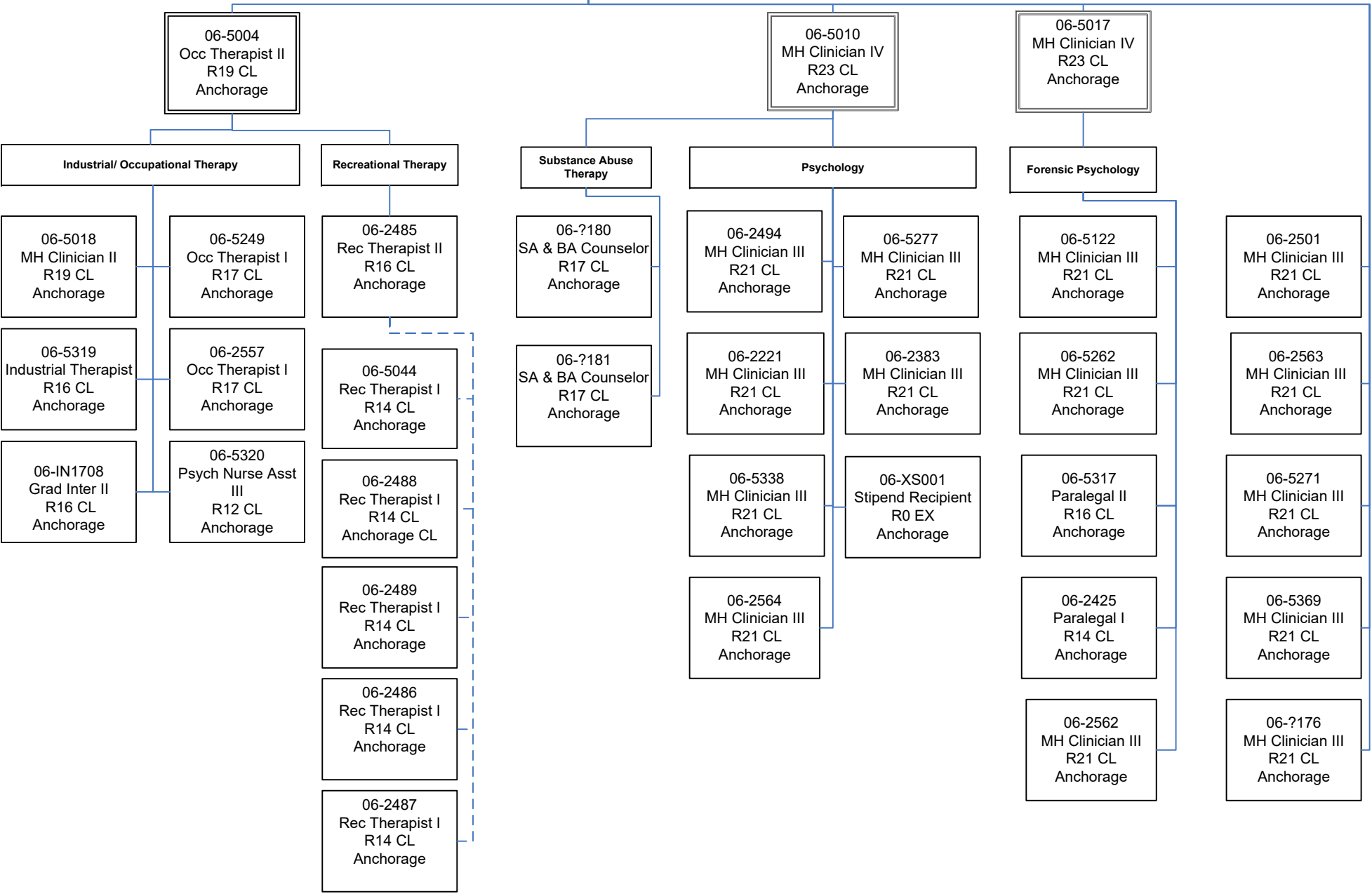
FY2022 Governor's Budget  
Department of Health and Social Services  
311 - Alaska Psychiatric Institute  
Pharmacy





FY2022 Governor's Budget  
Department of Health and Social Services  
311 - Alaska Psychiatric Institute  
Clinical Services

06-#311  
Dir Clinical Svcs  
R24 EX  
Anchorage



FY2022 Governor's Budget  
Department of Health and Social Services  
311 - Alaska Psychiatric Institute  
Social Work Services

06-#311  
Dir Clinical Svcs  
R24 EX  
Anchorage

06-5245  
MH Clinician IV  
R23 CL  
Anchorage

Katmai      Susitna      Chilkat      Taku      Denali      Weekend Coverage

06-5359  
MH Clinician III  
R21 CL  
Anchorage

06-5263  
MH Clinician III  
R21 CL  
Anchorage

06-5276  
MH Clinician III  
R21 CL  
Anchorage

06-5027  
MH Clinician III  
R21 CL  
Anchorage

06-2502  
MH Clinician III  
R21 CL  
Anchorage

06-5013  
MH Clinician III  
R21 CL  
Anchorage

06-5253  
MH Clinician II  
R19 CL  
Anchorage

06-5111  
MH Clinician II  
R19 CL  
Anchorage

06-5192  
MH Clinician II  
R19 CL  
Anchorage

06-2276  
Protective Svcs  
Spec II  
R17 CL  
Anchorage

06-5191  
MH Clinician I  
R17 CL  
Anchorage

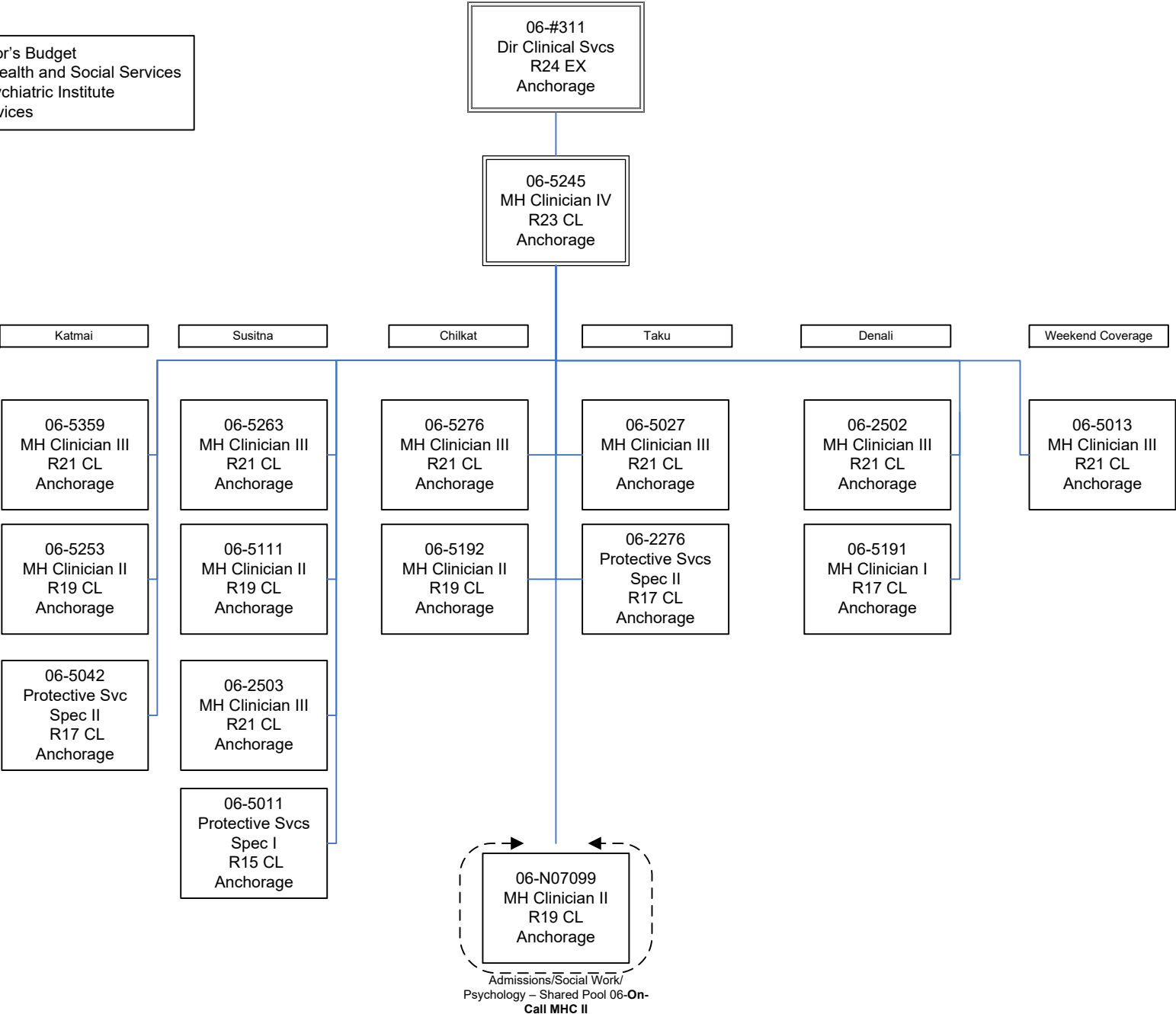
06-5042  
Protective Svc  
Spec II  
R17 CL  
Anchorage

06-2503  
MH Clinician III  
R21 CL  
Anchorage

06-5011  
Protective Svcs  
Spec I  
R15 CL  
Anchorage

06-N07099  
MH Clinician II  
R19 CL  
Anchorage

Admissions/Social Work/  
Psychology - Shared Pool 06-On-  
Call MHC II



FY2022 Governor's Budget  
 Department of Health and Social Services  
 311 - Alaska Psychiatric Institute  
 Nursing Administration

06-5014  
 Nursing Admin  
 R27 CL  
 Anchorage

06-5021  
 Asst Nursing  
 Admin  
 R26 CL  
 Anchorage

Infection Control  
 06-5199  
 Psych Nurse III  
 R25 CL  
 Anchorage

06-5059  
 Psych Nurse IV  
 R26 CL  
 Anchorage

Nurse III (Psych) Unit Supervisors

Taku & Denali  
 06-5068  
 Psych Nurse III  
 R25 CL  
 Anchorage

Katmai  
 06-5054  
 Psych Nurse III  
 R25 CL  
 Anchorage

Sustina  
 06-5323  
 Psych Nurse III  
 R25 CL  
 Anchorage

Chilkat  
 06-5056  
 Psych Nurse III  
 R25 CL  
 Anchorage

DAYS  
 06-2464  
 Psych Nurse II  
 R23 CL  
 Anchorage

06-5363  
 Psych Nurse Asst  
 III  
 R12 CL  
 Anchorage

EVENINGS  
 06-2348  
 Psych Nurse II  
 R23 CL  
 Anchorage

06-5106  
 Psych Nurse III  
 R25 CL  
 Anchorage

06-2543  
 Psych Nurse Asst II  
 R11 CL  
 Anchorage

06-5349  
 Psych Nurse Asst III  
 R12 CL  
 Anchorage

06-5031  
 Psych Nurse Asst II  
 R11 CL  
 Anchorage

06-5126  
 Office Assistant I  
 R8 CL  
 Anchorage

NIGHTS  
 06-5152  
 Psych Nurse III  
 R25 CL  
 Anchorage

06-5089  
 Psych Nurse II  
 R23 CL  
 Anchorage

06-2337  
 Psych Nurse Asst II  
 R11 CL  
 Anchorage

06-?084  
 Psych Nurse Asst  
 IV  
 R14 CL  
 Anchorage

06-?157  
 Psych Nurse Asst  
 IV  
 R14 CL  
 Anchorage

06-?160  
 Psych Nurse Asst  
 IV  
 R14 CL  
 Anchorage

06-?161  
 Psych Nurse Asst  
 IV  
 R14 CL  
 Anchorage

06-?166  
 Psych Nurse Asst  
 IV  
 R14 CL  
 Anchorage

06-?167  
 Psych Nurse Asst  
 IV  
 R14 CL  
 Anchorage

06-?168  
 Psych Nurse Asst II  
 R11 CL  
 Anchorage

06-2567  
 Psych Nurse Asst  
 IV  
 R14 CL  
 Anchorage

06-2571  
 Psych Nurse Asst  
 IV  
 R14 CL  
 Anchorage

06-2570  
 Psych Nurse Asst  
 IV  
 14 CL  
 Anchorage

06-2568  
 Psych Nurse Asst  
 IV  
 R14 CL  
 Anchorage

06-2569  
 Psych Nurse Asst  
 IV  
 R14 CL  
 Anchorage

06-2573  
 Psych Nurse Asst  
 II  
 R11 CL  
 Anchorage

06-2572  
 Psych Nurse Asst  
 IV  
 R14 CL  
 Anchorage

AM 12.5

PM 12.5

06-5310  
 Psych Nurse III  
 R25 CL  
 Anchorage

06-5157  
 Psych Nurse II  
 R23 CL  
 Anchorage

06-5304  
 Psych Nurse Asst  
 III  
 R12 CL  
 Anchorage

06-2532  
 Psych Nurse Asst III  
 R12 CL  
 Anchorage

06-2552  
 Psych Nurse Asst II  
 R11 CL  
 Anchorage

06-5076  
 Psych Nurse I  
 R22 CL  
 Anchorage

06-5179  
 Office Assistant I  
 R8 CL  
 Anchorage

06-2537  
 Psych Nurse Asst  
 III  
 R12 CL  
 Anchorage

06-2463  
 Psych Nurse II  
 R23 CL  
 Anchorage

06-2321  
 Psych Nurse III  
 R25 CL  
 Anchorage

06-5187  
 Psych Nurse Asst  
 III  
 R12 CL  
 Anchorage

06-5372  
 Psych Nurse II  
 R23 CL  
 Anchorage

06-2520  
 Psych Nurse Asst III  
 R12 CL  
 Anchorage

FY2022 Governor's Budget  
 Department of Health and Social Services  
 311 - Alaska Psychiatric Institute  
 Katmai Unit

06-5054  
 Psych Nurse III  
 R25 CL  
 Anchorage

06-5125  
 Office Assistant I  
 R8 CL  
 Anchorage

AM 12.5

06-2338  
 Psych Nurse II  
 R23 CL  
 Anchorage

06-5356  
 Psych Nurse I  
 R22 CL  
 Anchorage

06-5267  
 Psych Nurse II  
 R23 CL  
 Anchorage

06-2451  
 Psych Nurse II  
 R23 CL  
 Anchorage

06-5034  
 Psych Nurse I  
 R22 CL  
 Anchorage

06-5154  
 Psych Nurse I  
 R22 CL  
 Anchorage

06-2452  
 Psych Nurse II  
 R23 CL  
 Anchorage

06-5357  
 Psych Nurse Asst IV  
 R14 CL  
 Anchorage

06-5175  
 Psych Nurse Asst III  
 R12 CL  
 Anchorage

06-5334  
 Psych Nurse Asst III  
 R12 CL  
 Anchorage

06-5197  
 Psych Nurse Asst III  
 R12 CL  
 Anchorage

06-5329  
 Psych Nurse II  
 R23 CL  
 Anchorage

06-2455  
 Psych Nurse I  
 R22 CL  
 Anchorage

06-2457  
 Psych Nurse II  
 R23 CL  
 Anchorage

06-5188  
 Psych Nurse Asst III  
 R12 CL  
 Anchorage

06-5302  
 Psych Nurse Asst III  
 R12 CL  
 Anchorage

06-2522  
 Psych Nurse Asst III  
 R12 CL  
 Anchorage

06-2297  
 Psych Nurse Asst II  
 R11 CL  
 Anchorage

06-5143  
 Psych Nurse Asst IV  
 R14 CL  
 Anchorage

06-5278  
 Psych Nurse Asst III  
 R12 CL  
 Anchorage

06-5361  
 Psych Nurse Asst III  
 R12 CL  
 Anchorage

06-2524  
 Psych Nurse Asst II  
 R11 CL  
 Anchorage

06-5196  
 Psych Nurse Asst II  
 R11 CL  
 Anchorage

06-5075  
 Psych Nurse Asst III  
 R12 CL  
 Anchorage

06-5180  
 Psych Nurse Asst III  
 R12 CL  
 Anchorage

PM 12.5

06-5332  
 Psych Nurse II  
 R23 CL  
 Anchorage

06-2277  
 Psych Nurse II  
 R23 CL  
 Anchorage

06-5375  
 Psych Nurse II  
 R23 CL  
 Anchorage

06-5109  
 Psych Nurse II  
 R23 CL  
 Anchorage

06-5149  
 Psych Nurse II  
 R23 CL  
 Anchorage

06-2454  
 Psych Nurse II  
 R23 CL  
 Anchorage

06-5307  
 Psych Nurse II  
 R23 CL  
 Anchorage

06-5193  
 Psych Nurse Asst III  
 R12 CL  
 Anchorage

06-5280  
 Psych Nurse Asst IV  
 R14 CL  
 Anchorage

06-2284  
 Psych Nurse Ast III  
 R12 CL  
 Anchorage

06-5139  
 Psych Nurse Asst III  
 R12 CL  
 Anchorage

06-2525  
 Psych Nurse Asst II  
 R11 CL  
 Anchorage

06-5155  
 Psych Nurse Asst III  
 R12 CL  
 Anchorage

06-2523  
 Psych Nurse Asst III  
 R12 CL  
 Anchorage

06-5275  
 Psych Nurse Asst IV  
 R14 CL  
 Anchorage

06-5233  
 Psych Nurse Asst III  
 R12 CL  
 Anchorage

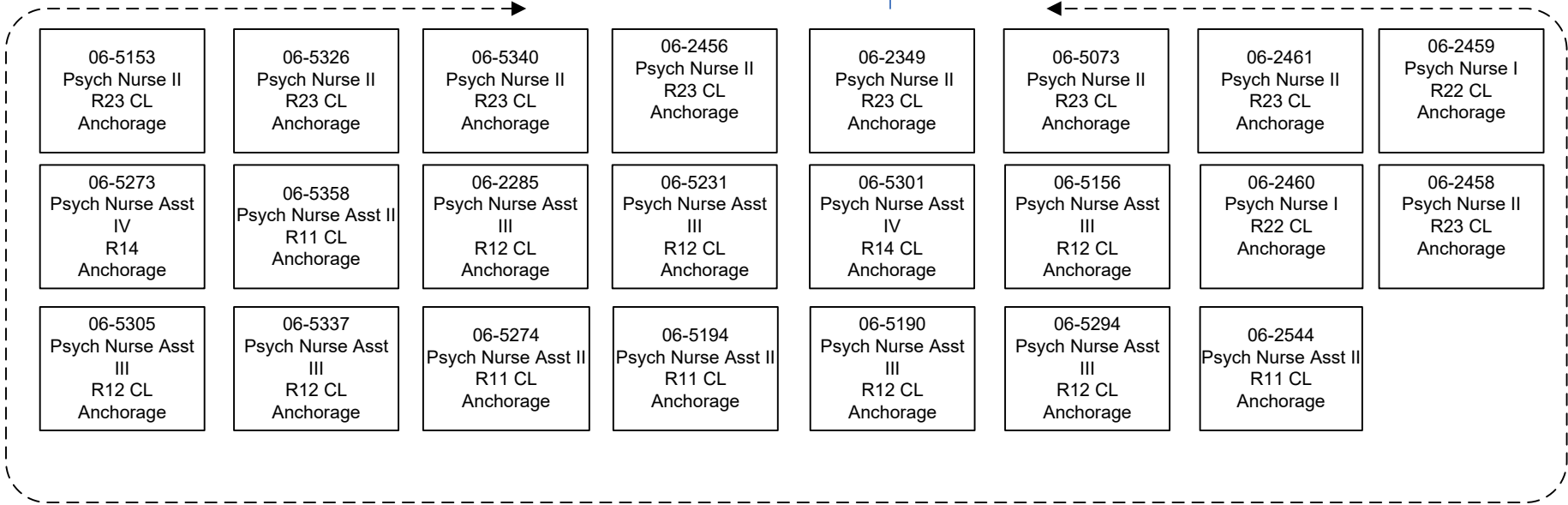
06-2526  
 Psych Nurse Asst III  
 R12 CL  
 Anchorage

FY2022 Governor's Budget  
 Department of Health and Social Services  
 311 - Alaska Psychiatric Institute  
 Susitna Unit

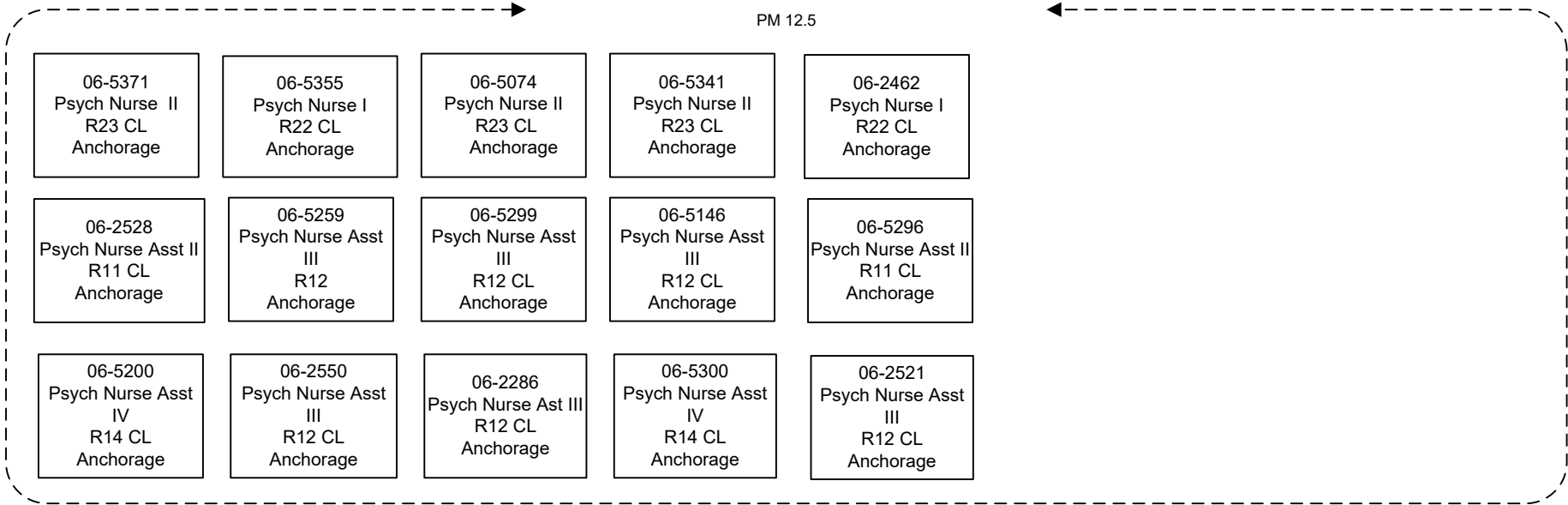
06-5323  
 Psych Nurse III  
 R25 CL  
 Anchorage

06-5353  
 Office Assistant I  
 R8 CL  
 Anchorage

AM 12.5



PM 12.5



FY2022 Governor's Budget  
 Department of Health and Social Services  
 311 - Alaska Psychiatric Institute  
 Taku Unit

06-5068  
 Psych Nurse III  
 R25 CL  
 Anchorage

06-5365  
 Office Assistant I  
 R8 CL  
 Anchorage

AM 12.5

PM 12.5

06-5038  
 Psych Nurse II  
 R23 CL  
 Anchorage

06-5083  
 Psych Nurse II  
 R23 CL  
 Anchorage

06-5183  
 Psych Nurse Asst  
 IV  
 R14 CL  
 Anchorage

06-2534  
 Psych Nurse Asst III  
 R12 CL  
 Anchorage

06-2533  
 Psych Nurse Asst III  
 R12 CL  
 Anchorage

06-2545  
 Psych Nurse Asst  
 III  
 R12 CL  
 Anchorage

06-5279  
 Psych Nurse Asst III  
 R12 CL  
 Anchorage

06-2551  
 Psych Nurse Asst III  
 R12 CL  
 Anchorage

06-5108  
 Psych Nurse Asst  
 III  
 R12 CL  
 Anchorage

06-5306  
 Psych Nurse Asst III  
 R12 CL  
 Anchorage

06-2539  
 Psych Nurse Asst III  
 R12 CL  
 Anchorage

06-5085  
 Psych Nurse II  
 R23 CL  
 Anchorage

06-5158  
 Psych Nurse II  
 R23 CL  
 Anchorage

06-2535  
 Psych Nurse Asst III  
 R12 CL  
 Anchorage

06-5362  
 Psych Nurse Asst  
 III  
 R12 CL  
 Anchorage

06-5260  
 Psych Nurse Asst  
 III  
 R12 CL  
 Anchorage

06-5189  
 Psych Nurse Asst  
 III  
 R12 CL  
 Anchorage

06-5195  
 Psych Nurse Asst III  
 R12 CL  
 Anchorage

06-2536  
 Psych Nurse Asst II  
 R11 CL  
 Anchorage

FY2022 Governor's Budget  
 Department of Health and Social Services  
 311 - Alaska Psychiatric Institute  
 Chilkat Unit

06-5056  
 Psych Nurse III  
 R25 CL  
 Anchorage

06-5176  
 Office Assistant I  
 R8 CL  
 Anchorage

AM 12.5

PM 12.5

06-5086  
 Psych Nurse I  
 R22 CL  
 Anchorage

06-5373  
 Psych Nurse II  
 R23 CL  
 Anchorage

06-2467  
 Psych Nurse II  
 R23 CL  
 Anchorage

06-5078  
 Psych Nurse I  
 R22 CL  
 Anchorage

06-2465  
 Psych Nurse I  
 R22 CL  
 Anchorage

06-5140  
 Psych Nurse Asst  
 IV  
 R14 CL  
 Anchorage

06-5201  
 Psych Nurse Asst  
 III  
 R12 CL  
 Anchorage

06-5182  
 Psych Nurse Asst  
 II  
 R11 CL  
 Anchorage

06-2541  
 Psych Nurse Asst III  
 R12 CL  
 Anchorage

06-2538  
 Psych Nurse Asst III  
 R12 CL  
 Anchorage

06-5232  
 Psych Nurse Asst  
 IV  
 R14 CL  
 Anchorage

06-5235  
 Psych Nurse Asst  
 III  
 R12 CL  
 Anchorage

06-5117  
 Psych Nurse Asst III  
 R12 CL  
 Anchorage

06-5050  
 Psych Nurse II  
 R23 CL  
 Anchorage

06-2540  
 Psych Nurse Asst III  
 R12 CL  
 Anchorage

06-2531  
 Psych Nurse Asst II  
 R11 CL  
 Anchorage

06-2466  
 Psych Nurse II  
 R23 CL  
 Anchorage

06-5090  
 Psych Nurse II  
 R23 CL  
 Anchorage

06-5339  
 Psych Nurse II  
 R23 CL  
 Anchorage

06-5113  
 Psych Nurse Asst III  
 R12 CL  
 Anchorage

06-2542  
 Psych Nurse Asst  
 III  
 R12 CL  
 Anchorage

06-5335  
 Psych Nurse Asst  
 III  
 R12 CL  
 Anchorage

06-5348  
 Psych Nurse Asst III  
 R12 CL  
 Anchorage

06-5308  
 Psych Nurse Asst III  
 R12 CL  
 Anchorage

06-5185  
 Psych Nurse Asst  
 III  
 R12 CL  
 Anchorage

06-2527  
 Psych Nurse Asst II  
 R11 CL  
 Anchorage

06-2529  
 Psych Nurse Asst II  
 R11 CL  
 Anchorage

FY2022 Governor's Budget  
Department of Health and Social Services  
311 - Alaska Psychiatric Institute  
Denali Unit

06-5068  
Psych Nurse III  
R25 CL  
Anchorage

06-5365  
Office Assistant I  
R8 CL  
Anchorage

AM 12.5

PM 12.5

06-2470  
Psych Nurse I  
R22 CL  
Anchorage

06-5324  
Psych Nurse II  
R23 CL  
Anchorage

06-2469  
Psych Nurse II  
R23 CL  
Anchorage

06-5130  
Psych Nurse I  
R22 CL  
Anchorage

06-5360  
Psych Nurse Asst III  
R12 CL  
Anchorage

06-5087  
Psych Nurse Asst III  
R12 CL  
Anchorage

06-5230  
PNA IV  
R14 CL  
Anchorage

06-5112  
Psych Nurse Asst III  
R12 CL  
Anchorage

06-2548  
Psych Nurse Asst II  
R11 CL  
Anchorage

06-2530  
Psych Nurse Asst III  
R12 CL  
Anchorage

06-2546  
Psych Nurse Asst III  
R12 CL  
Anchorage

06-2547  
Psych Nurse Asst III  
R12 CL  
Anchorage

06-5297  
Psych Nurse Asst II  
R11 CL  
Anchorage

06-5303  
Psych Nurse Asst III  
R12 CL  
Anchorage

06-2292  
Psych Nurse Ast II  
R11 CL  
Anchorage

06-2549  
Psych Nurse Asst II  
R11 CL  
Anchorage

06-5295  
Psych Nurse Asst III  
R12 CL  
Anchorage

06-5298  
Psych Nurse Asst III  
R12 CL  
Anchorage



FY2022 Governor's Budget  
Department of Health and Social Services  
311 - Alaska Psychiatric Institute  
Nursing On Call

06-5059  
Psych Nurse IV  
R26 CL  
Anchorage

06-N07105  
Psych Nurse Asst I  
R10 CL  
Anchorage

06-N19007  
Psych Nurse Asst II  
R11 CL  
Anchorage

06-N19008  
Psych Nurse Asst  
III  
R12 CL  
Anchorage

06-N07106  
Psych Nurse I  
R22 CL  
Anchorage

06-N07107  
Psych Nurse II  
R23 CL  
Anchorage

06-N19009  
Psych Nurse III  
R25 CL  
Anchorage

