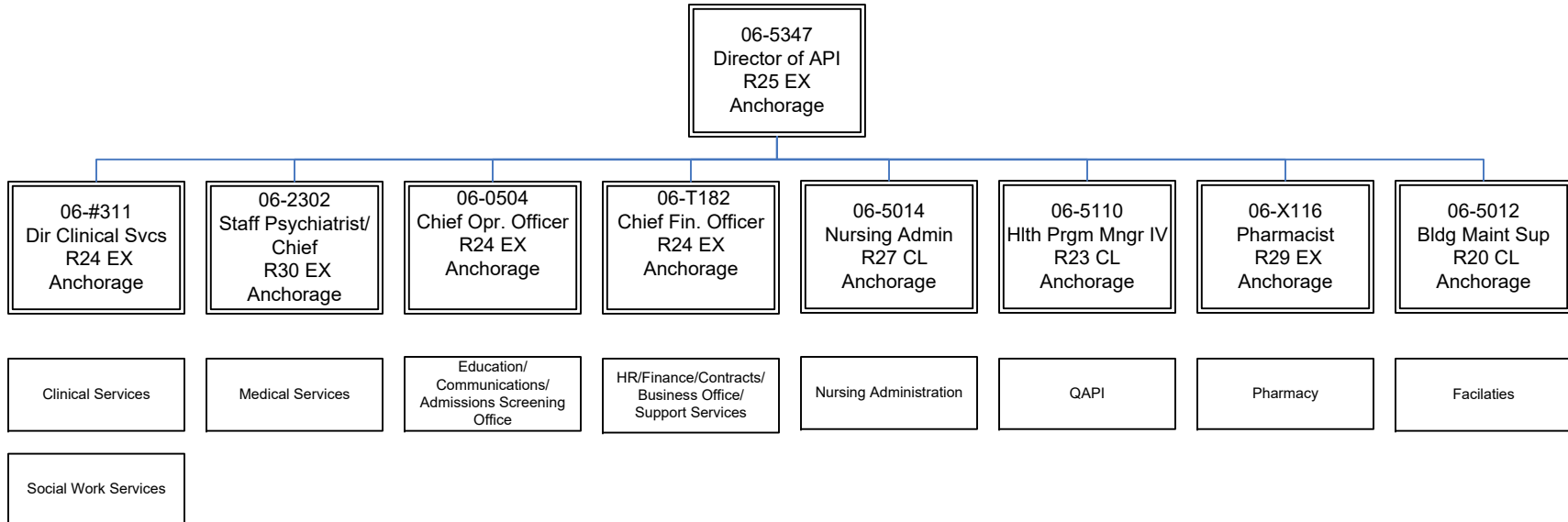
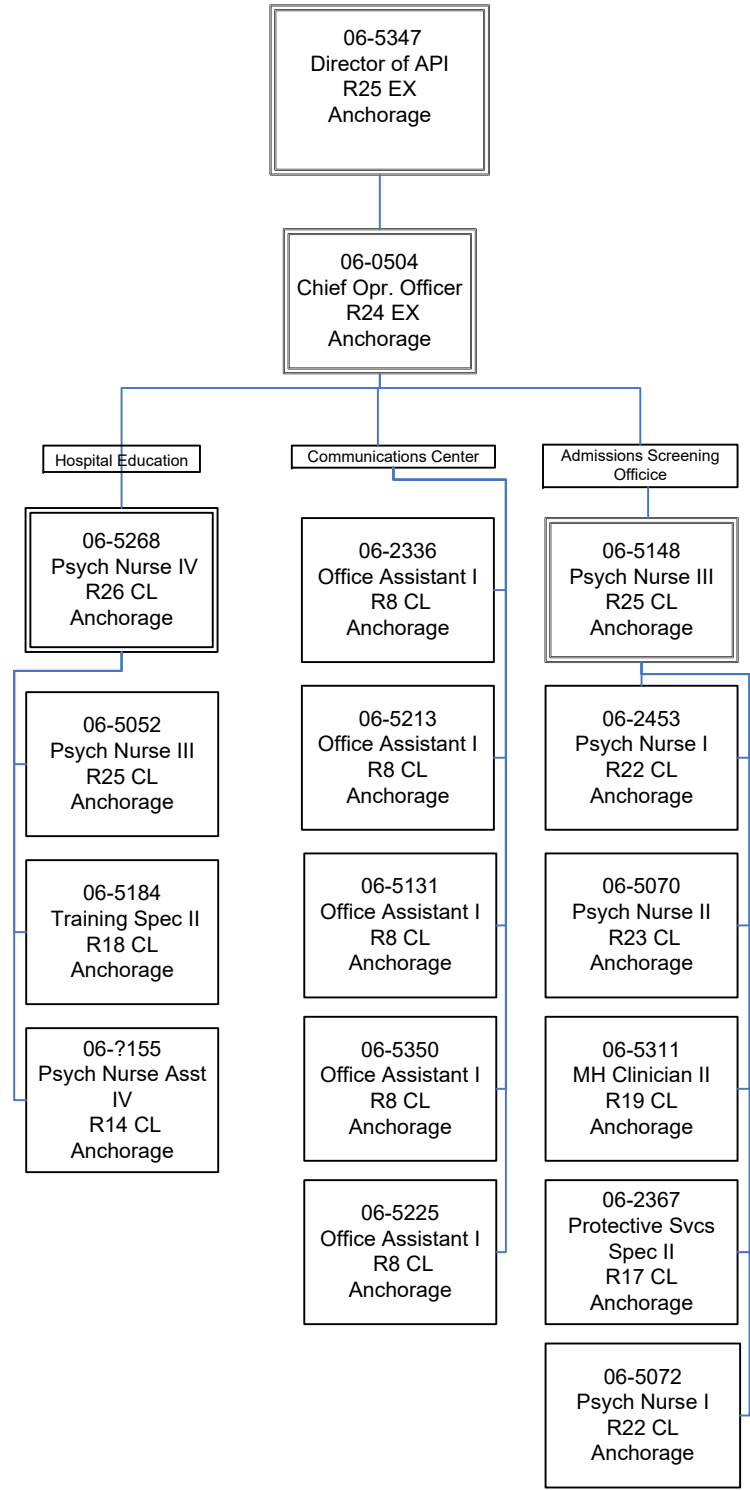


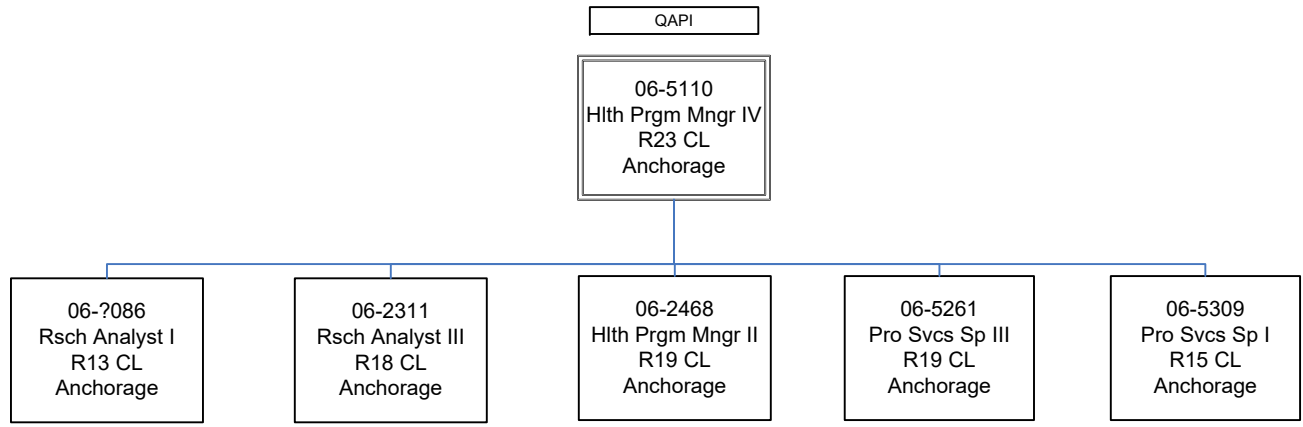
FY2022 Governor's Budget
 Department of Health and Social Services
 311 - Alaska Psychiatric Institute
 Executive Team



FY2022 Governor's Budget
Department of Health and Social Services
311 - Alaska Psychiatric Institute
Education/Comm Center/ ASO



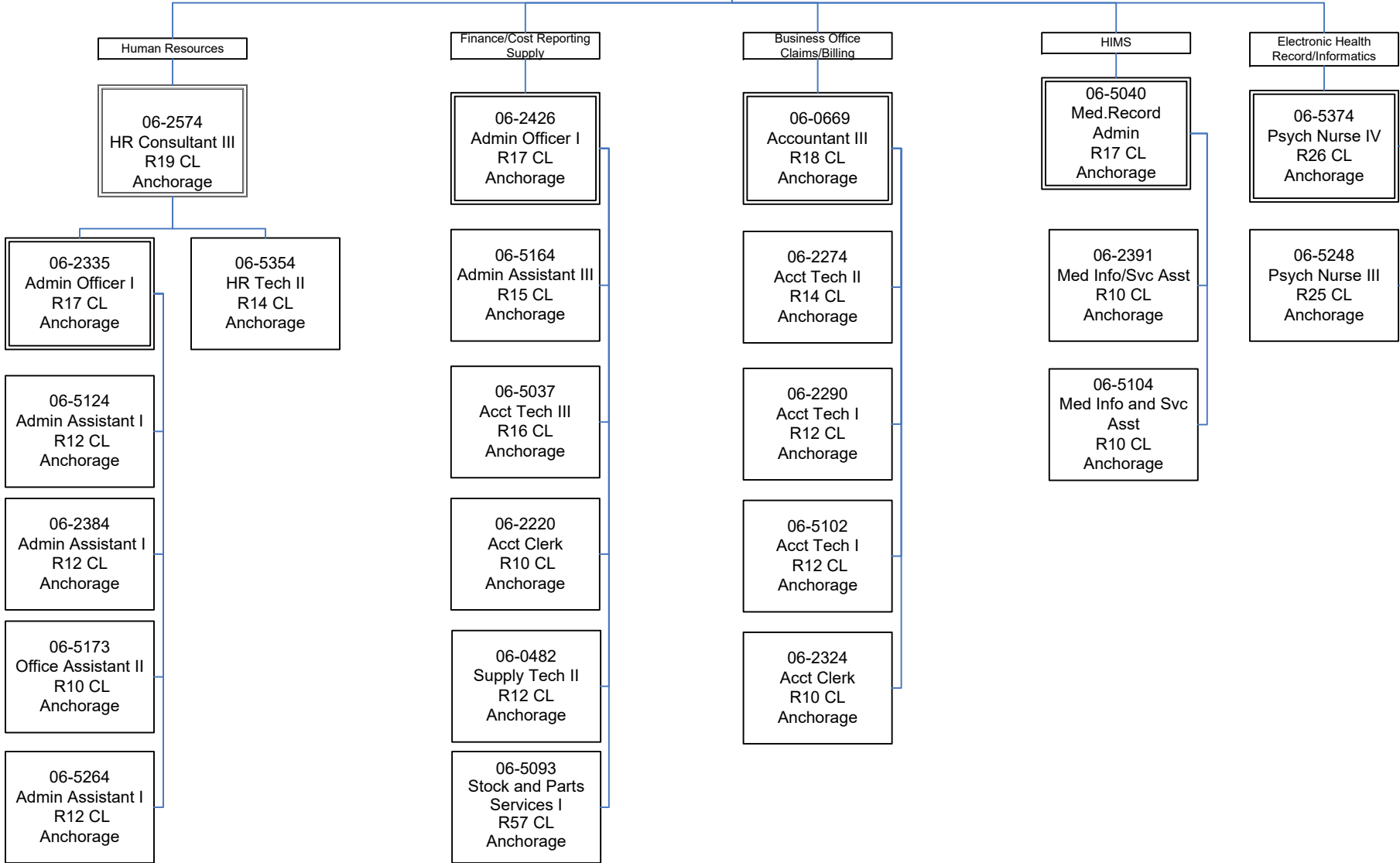
FY2022 Governor's Budget
Department of Health and Social Services
311 - Alaska Psychiatric Institute
QAPI/Recovery Support/P&P



FY2022 Governor's Budget
 Department of Health and Social Services
 311 - Alaska Psychiatric Institute
 HR/Finance/Contracts/Business Office/ Support Services

06-5347
 Director of API
 R25 EX
 Anchorage

06-T182
 Chief Fin. Officer
 R24 EX
 Anchorage



FY2022 Governor's Budget
Department of Health and Social Services
311 - Alaska Psychiatric Institute
Facilities

06-5347
Chief Exec. Officer
R25 EX
Anchorage

Facilities

06-5012
Blding Maint Supr.
R20 CL
Anchorage

06-2480
Office Assistant II
R10 CL
Anchorage

Building Maintenance

Environmental Services

06-5312
Maint BFC Jrny II
R51 CL
Anchorage

06-5214
Env Svcs Lead
R58 CL
Anchorage

06-2308
Maint Gen Sub I
R58 CL
Anchorage

06-5047
Maint Plumb Jrny I
R53 CL
Anchorage

06-2558
Maint Gen Jrny
R54 CL
Anchorage

06-5206
Env Svcs Jrny I
R61 CL
Anchorage

06-5222
Env Svcs Jrny I
R61 CL
Anchorage

06-5216
Env Svcs Jrny I
R61 CL
Anchorage

06-5035
Maint Gen Jrny
R54 CL
Anchorage

06-5064
Maint Gen Sub II
R56 CL
Anchorage

06-2559
Maint Gen Jrny
R54 CL
Anchorage

06-5203
Env Svcs Jrny I
R61 CL
Anchorage

06-5204
Env Svcs Jrny I
R61 CL
Anchorage

06-5167
Env Svcs Jrny II
R60 CL
Anchorage

06-5168
Env Svcs Jrny II
R60 CL
Anchorage

06-5364
Env Svcs Jrny II
R60 CL
Anchorage

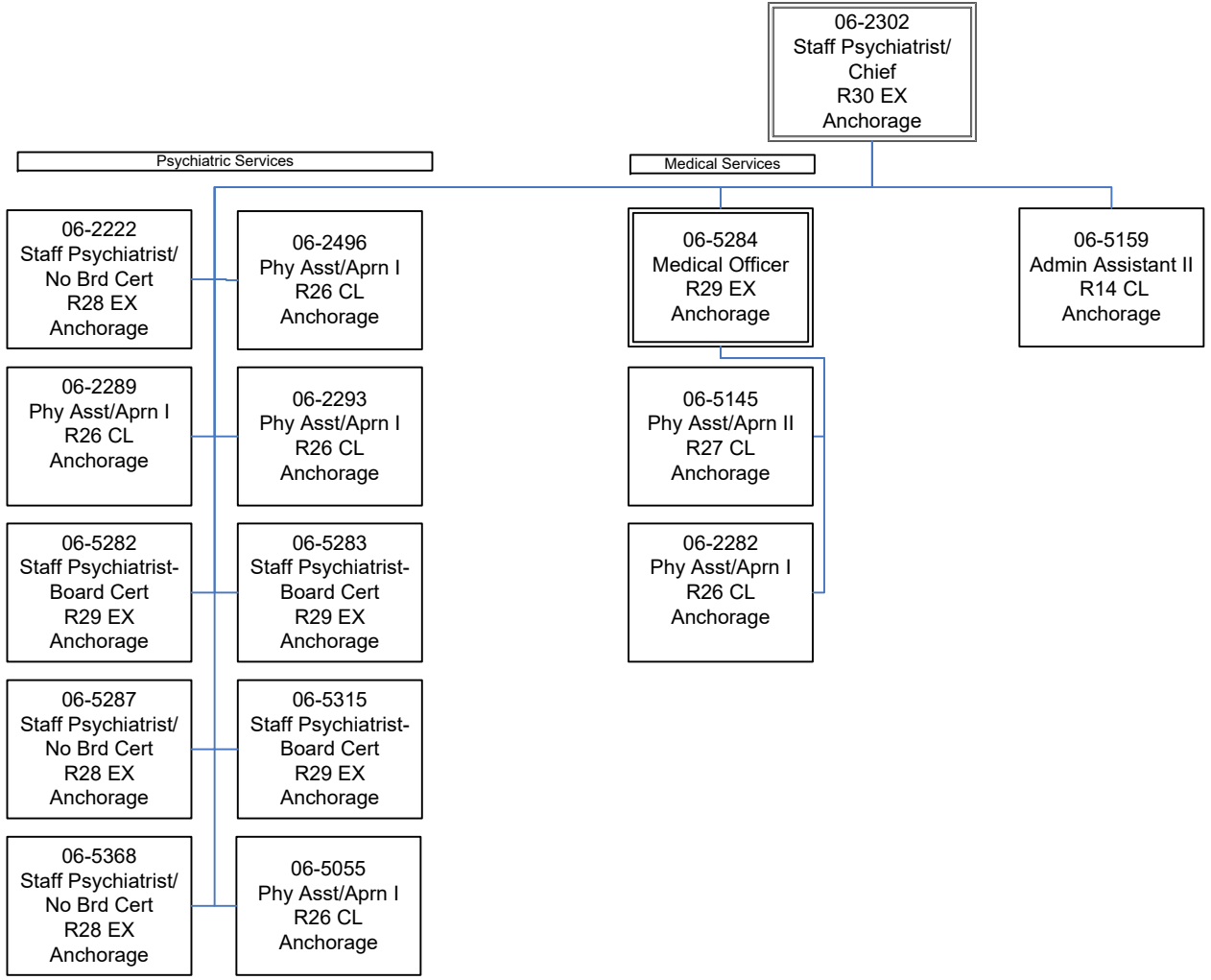
06-5217
Env Svcs Jrny II
R60 CL
Anchorage

06-2479
Env Svcs Jrny II
R60 CL
Anchorage

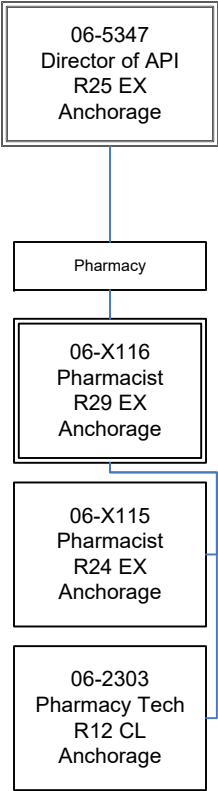
06-5215
Env Svcs Jrny II
R60 CL
Anchorage

06-5202
Env Svcs Jrny II
R60 CL
Anchorage

FY2022 Governor's Budget
 Department of Health and Social Services
 311 - Alaska Psychiatric Institute
 Medical Services

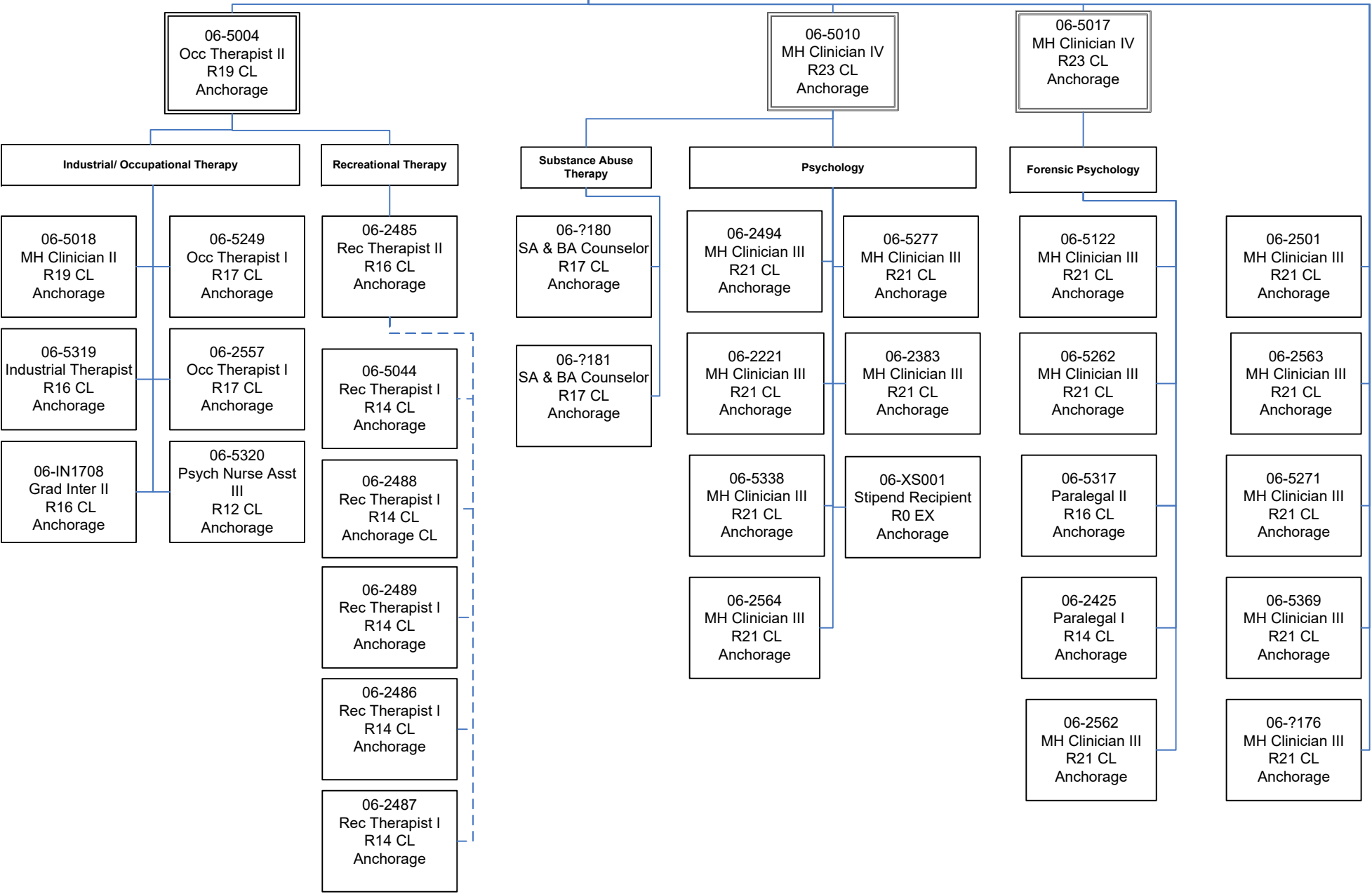


FY2022 Governor's Budget
Department of Health and Social Services
311 - Alaska Psychiatric Institute
Pharmacy



FY2022 Governor's Budget
Department of Health and Social Services
311 - Alaska Psychiatric Institute
Clinical Services

06-#311
Dir Clinical Svcs
R24 EX
Anchorage



FY2022 Governor's Budget
 Department of Health and Social Services
 311 - Alaska Psychiatric Institute
 Social Work Services

06-#311
 Dir Clinical Svcs
 R24 EX
 Anchorage

06-5245
 MH Clinician IV
 R23 CL
 Anchorage

Katmai Susitna Chilkat Taku Denali Weekend Coverage

06-5359
 MH Clinician III
 R21 CL
 Anchorage

06-5263
 MH Clinician III
 R21 CL
 Anchorage

06-5276
 MH Clinician III
 R21 CL
 Anchorage

06-5027
 MH Clinician III
 R21 CL
 Anchorage

06-2502
 MH Clinician III
 R21 CL
 Anchorage

06-5013
 MH Clinician III
 R21 CL
 Anchorage

06-5253
 MH Clinician II
 R19 CL
 Anchorage

06-5111
 MH Clinician II
 R19 CL
 Anchorage

06-5192
 MH Clinician II
 R19 CL
 Anchorage

06-2276
 Protective Svcs
 Spec II
 R17 CL
 Anchorage

06-5191
 MH Clinician I
 R17 CL
 Anchorage

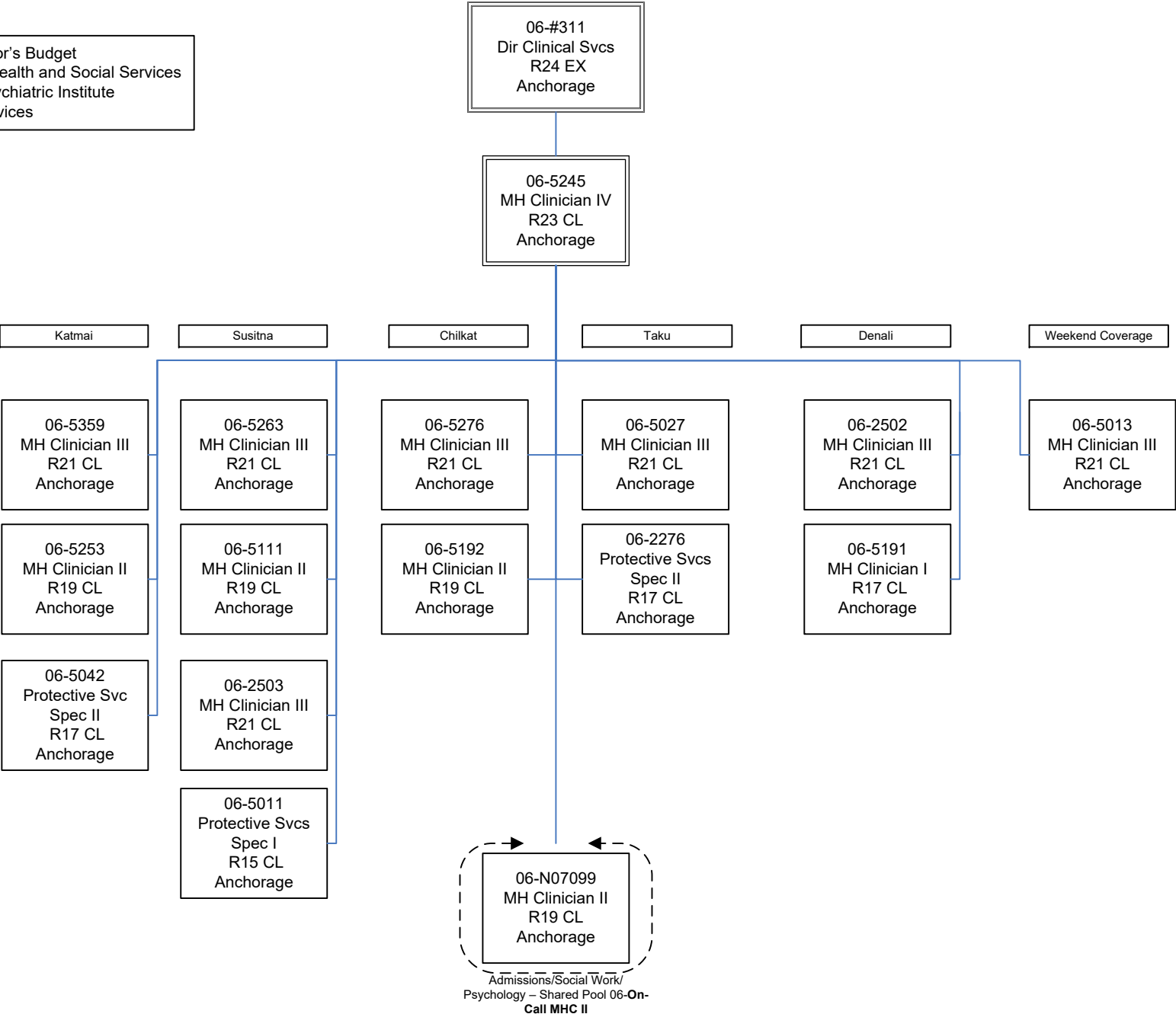
06-5042
 Protective Svc
 Spec II
 R17 CL
 Anchorage

06-2503
 MH Clinician III
 R21 CL
 Anchorage

06-5011
 Protective Svcs
 Spec I
 R15 CL
 Anchorage

06-N07099
 MH Clinician II
 R19 CL
 Anchorage

Admissions/Social Work/
 Psychology - Shared Pool 06-On-
 Call MHC II



FY2022 Governor's Budget
 Department of Health and Social Services
 311 - Alaska Psychiatric Institute
 Nursing Administration

06-5014
 Nursing Admin
 R27 CL
 Anchorage

06-5021
 Asst Nursing
 Admin
 R26 CL
 Anchorage

Infection Control
 06-5199
 Psych Nurse III
 R25 CL
 Anchorage

06-5059
 Psych Nurse IV
 R26 CL
 Anchorage

Nurse III (Psych) Unit Supervisors

Taku & Denali
 06-5068
 Psych Nurse III
 R25 CL
 Anchorage

Katmai
 06-5054
 Psych Nurse III
 R25 CL
 Anchorage

Sustina
 06-5323
 Psych Nurse III
 R25 CL
 Anchorage

Chilkat
 06-5056
 Psych Nurse III
 R25 CL
 Anchorage

DAYS
 06-2464
 Psych Nurse II
 R23 CL
 Anchorage

06-5363
 Psych Nurse Asst
 III
 R12 CL
 Anchorage

EVENINGS
 06-2348
 Psych Nurse II
 R23 CL
 Anchorage

06-5106
 Psych Nurse III
 R25 CL
 Anchorage

06-2543
 Psych Nurse Asst II
 R11 CL
 Anchorage

06-5349
 Psych Nurse Asst III
 R12 CL
 Anchorage

06-5031
 Psych Nurse Asst II
 R11 CL
 Anchorage

06-5126
 Office Assistant I
 R8 CL
 Anchorage

NIGHTS
 06-5152
 Psych Nurse III
 R25 CL
 Anchorage

06-5089
 Psych Nurse II
 R23 CL
 Anchorage

06-2337
 Psych Nurse Asst II
 R11 CL
 Anchorage

06-?084
 Psych Nurse Asst
 IV
 R14 CL
 Anchorage

06-?157
 Psych Nurse Asst
 IV
 R14 CL
 Anchorage

06-?160
 Psych Nurse Asst
 IV
 R14 CL
 Anchorage

06-?161
 Psych Nurse Asst
 IV
 R14 CL
 Anchorage

06-?166
 Psych Nurse Asst
 IV
 R14 CL
 Anchorage

06-?167
 Psych Nurse Asst
 IV
 R14 CL
 Anchorage

06-?168
 Psych Nurse Asst II
 R11 CL
 Anchorage

06-2567
 Psych Nurse Asst
 IV
 R14 CL
 Anchorage

06-2571
 Psych Nurse Asst
 IV
 R14 CL
 Anchorage

06-2570
 Psych Nurse Asst
 IV
 14 CL
 Anchorage

06-2568
 Psych Nurse Asst
 IV
 R14 CL
 Anchorage

06-2569
 Psych Nurse Asst
 IV
 R14 CL
 Anchorage

06-2573
 Psych Nurse Asst
 II
 R11 CL
 Anchorage

06-2572
 Psych Nurse Asst
 IV
 R14 CL
 Anchorage

AM 12.5
 06-5310
 Psych Nurse III
 R25 CL
 Anchorage

06-5157
 Psych Nurse II
 R23 CL
 Anchorage

06-5304
 Psych Nurse Asst
 III
 R12 CL
 Anchorage

06-2532
 Psych Nurse Asst III
 R12 CL
 Anchorage

06-2552
 Psych Nurse Asst II
 R11 CL
 Anchorage

06-5076
 Psych Nurse I
 R22 CL
 Anchorage

06-5179
 Office Assistant I
 R8 CL
 Anchorage

06-2537
 Psych Nurse Asst
 III
 R12 CL
 Anchorage

PM 12.5
 06-2463
 Psych Nurse II
 R23 CL
 Anchorage

06-2321
 Psych Nurse III
 R25 CL
 Anchorage

06-5187
 Psych Nurse Asst
 III
 R12 CL
 Anchorage

06-5372
 Psych Nurse II
 R23 CL
 Anchorage

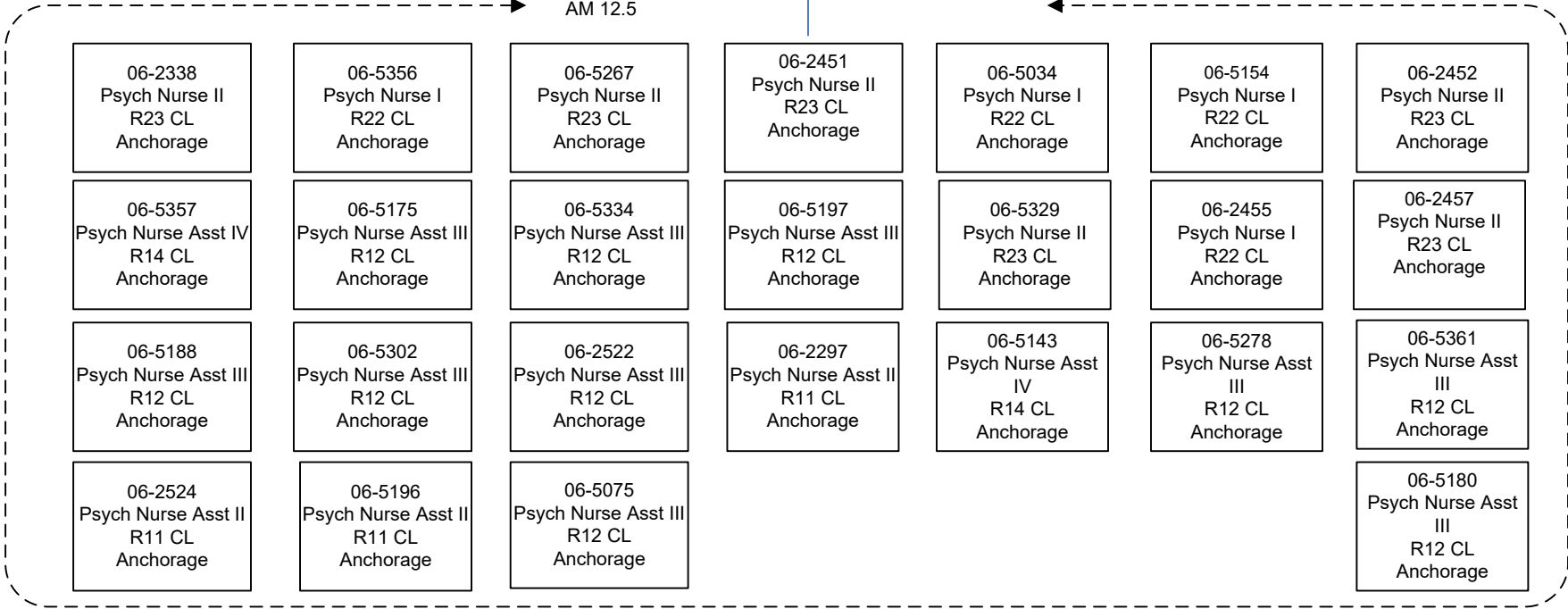
06-2520
 Psych Nurse Asst III
 R12 CL
 Anchorage

FY2022 Governor's Budget
 Department of Health and Social Services
 311 - Alaska Psychiatric Institute
 Katmai Unit

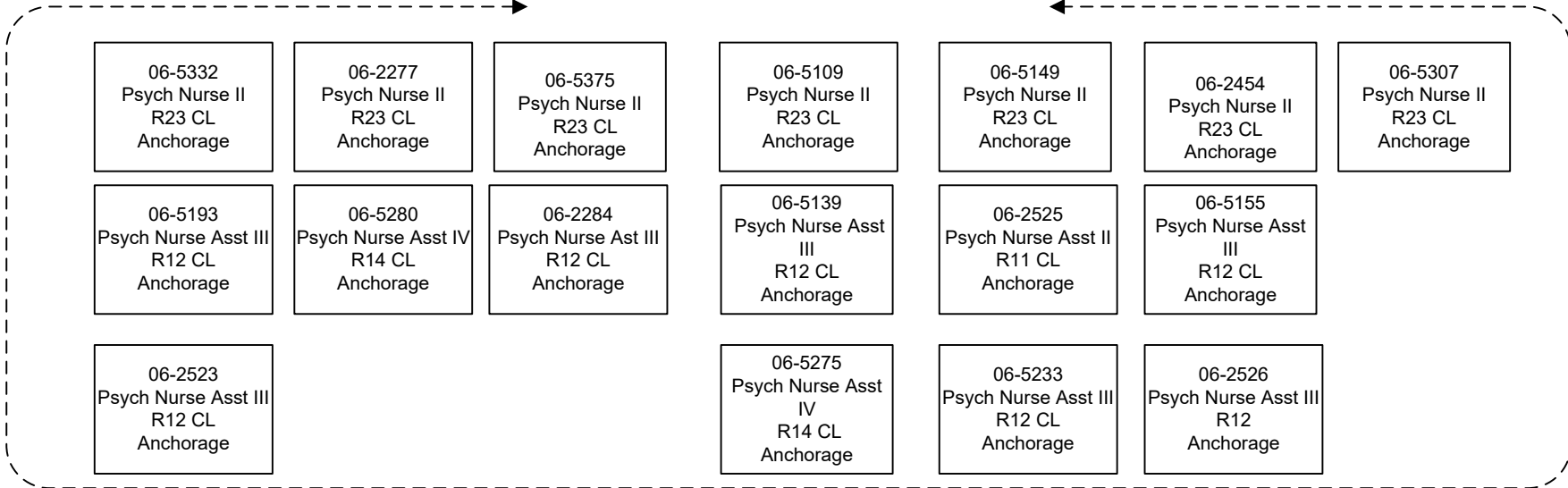
06-5054
 Psych Nurse III
 R25 CL
 Anchorage

06-5125
 Office Assistant I
 R8 CL
 Anchorage

AM 12.5



PM 12.5

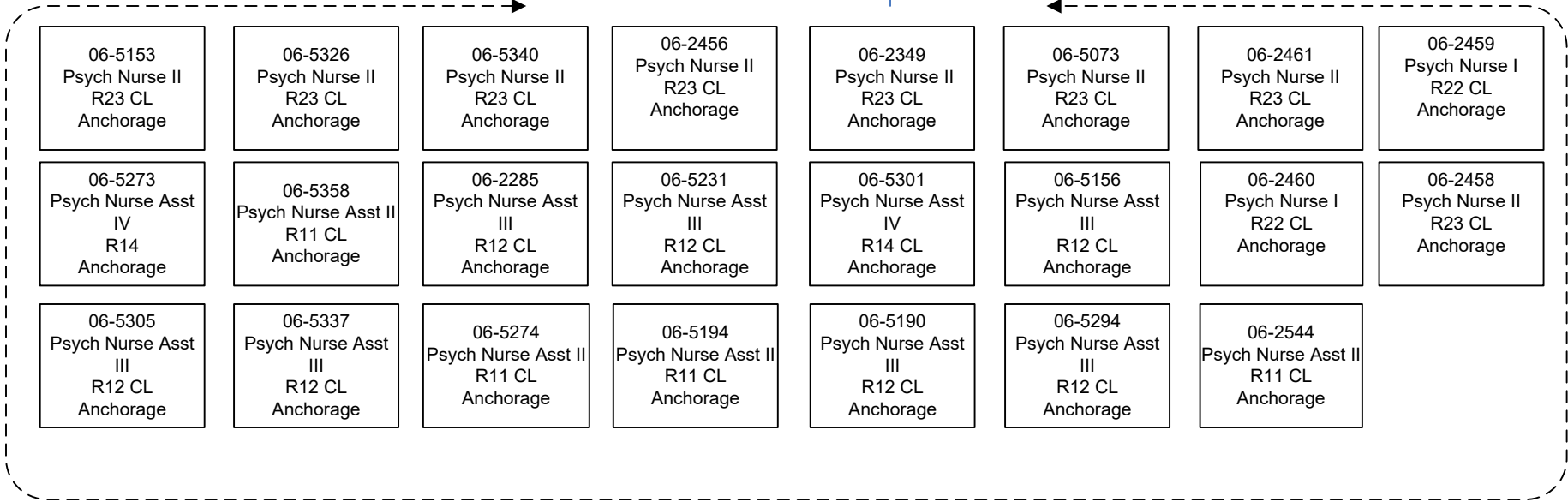


FY2022 Governor's Budget
 Department of Health and Social Services
 311 - Alaska Psychiatric Institute
 Susitna Unit

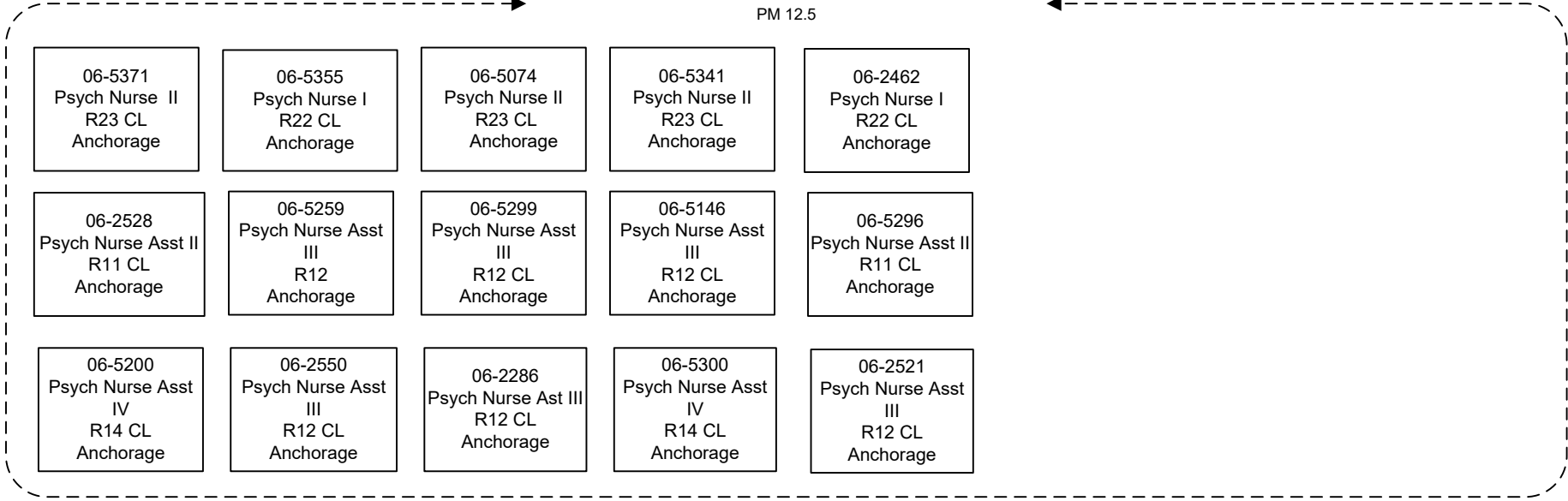
06-5323
 Psych Nurse III
 R25 CL
 Anchorage

06-5353
 Office Assistant I
 R8 CL
 Anchorage

AM 12.5



PM 12.5



FY2022 Governor's Budget
 Department of Health and Social Services
 311 - Alaska Psychiatric Institute
 Taku Unit

06-5068
 Psych Nurse III
 R25 CL
 Anchorage

06-5365
 Office Assistant I
 R8 CL
 Anchorage

AM 12.5

PM 12.5

06-5038
 Psych Nurse II
 R23 CL
 Anchorage

06-5083
 Psych Nurse II
 R23 CL
 Anchorage

06-5183
 Psych Nurse Asst
 IV
 R14 CL
 Anchorage

06-2534
 Psych Nurse Asst III
 R12 CL
 Anchorage

06-2533
 Psych Nurse Asst III
 R12 CL
 Anchorage

06-2545
 Psych Nurse Asst
 III
 R12 CL
 Anchorage

06-5279
 Psych Nurse Asst III
 R12 CL
 Anchorage

06-2551
 Psych Nurse Asst III
 R12 CL
 Anchorage

06-5108
 Psych Nurse Asst
 III
 R12 CL
 Anchorage

06-5306
 Psych Nurse Asst III
 R12 CL
 Anchorage

06-2539
 Psych Nurse Asst III
 R12 CL
 Anchorage

06-5085
 Psych Nurse II
 R23 CL
 Anchorage

06-5158
 Psych Nurse II
 R23 CL
 Anchorage

06-2535
 Psych Nurse Asst III
 R12 CL
 Anchorage

06-5362
 Psych Nurse Asst
 III
 R12 CL
 Anchorage

06-5260
 Psych Nurse Asst
 III
 R12 CL
 Anchorage

06-5189
 Psych Nurse Asst
 III
 R12 CL
 Anchorage

06-5195
 Psych Nurse Asst III
 R12 CL
 Anchorage

06-2536
 Psych Nurse Asst II
 R11 CL
 Anchorage

FY2022 Governor's Budget
 Department of Health and Social Services
 311 - Alaska Psychiatric Institute
 Chilkat Unit

06-5056
 Psych Nurse III
 R25 CL
 Anchorage

06-5176
 Office Assistant I
 R8 CL
 Anchorage

AM 12.5

PM 12.5

06-5086
 Psych Nurse I
 R22 CL
 Anchorage

06-5373
 Psych Nurse II
 R23 CL
 Anchorage

06-2467
 Psych Nurse II
 R23 CL
 Anchorage

06-5078
 Psych Nurse I
 R22 CL
 Anchorage

06-2465
 Psych Nurse I
 R22 CL
 Anchorage

06-5140
 Psych Nurse Asst
 IV
 R14 CL
 Anchorage

06-5201
 Psych Nurse Asst
 III
 R12 CL
 Anchorage

06-5182
 Psych Nurse Asst
 II
 R11 CL
 Anchorage

06-2541
 Psych Nurse Asst III
 R12 CL
 Anchorage

06-2538
 Psych Nurse Asst III
 R12 CL
 Anchorage

06-5232
 Psych Nurse Asst
 IV
 R14 CL
 Anchorage

06-5235
 Psych Nurse Asst
 III
 R12 CL
 Anchorage

06-5117
 Psych Nurse Asst III
 R12 CL
 Anchorage

06-5050
 Psych Nurse II
 R23 CL
 Anchorage

06-2540
 Psych Nurse Asst III
 R12 CL
 Anchorage

06-2531
 Psych Nurse Asst II
 R11 CL
 Anchorage

06-2466
 Psych Nurse II
 R23 CL
 Anchorage

06-5090
 Psych Nurse II
 R23 CL
 Anchorage

06-5339
 Psych Nurse II
 R23 CL
 Anchorage

06-5113
 Psych Nurse Asst III
 R12 CL
 Anchorage

06-2542
 Psych Nurse Asst
 III
 R12 CL
 Anchorage

06-5335
 Psych Nurse Asst
 III
 R12 CL
 Anchorage

06-5348
 Psych Nurse Asst III
 R12 CL
 Anchorage

06-5308
 Psych Nurse Asst III
 R12 CL
 Anchorage

06-5185
 Psych Nurse Asst
 III
 R12 CL
 Anchorage

06-2527
 Psych Nurse Asst II
 R11 CL
 Anchorage

06-2529
 Psych Nurse Asst II
 R11 CL
 Anchorage

FY2022 Governor's Budget
Department of Health and Social Services
311 - Alaska Psychiatric Institute
Denali Unit

06-5068
Psych Nurse III
R25 CL
Anchorage

06-5365
Office Assistant I
R8 CL
Anchorage

AM 12.5

PM 12.5

06-2470
Psych Nurse I
R22 CL
Anchorage

06-5324
Psych Nurse II
R23 CL
Anchorage

06-2469
Psych Nurse II
R23 CL
Anchorage

06-5130
Psych Nurse I
R22 CL
Anchorage

06-5360
Psych Nurse Asst III
R12 CL
Anchorage

06-5087
Psych Nurse Asst III
R12 CL
Anchorage

06-5230
PNA IV
R14 CL
Anchorage

06-5112
Psych Nurse Asst III
R12 CL
Anchorage

06-2548
Psych Nurse Asst II
R11 CL
Anchorage

06-2530
Psych Nurse Asst III
R12 CL
Anchorage

06-2546
Psych Nurse Asst III
R12 CL
Anchorage

06-2547
Psych Nurse Asst III
R12 CL
Anchorage

06-5297
Psych Nurse Asst II
R11 CL
Anchorage

06-5303
Psych Nurse Asst III
R12 CL
Anchorage

06-2292
Psych Nurse Ast II
R11 CL
Anchorage

06-2549
Psych Nurse Asst II
R11 CL
Anchorage

06-5295
Psych Nurse Asst III
R12 CL
Anchorage

06-5298
Psych Nurse Asst III
R12 CL
Anchorage

FY2022 Governor's Budget
Department of Health and Social Services
311 - Alaska Psychiatric Institute
Nursing On Call

06-5059
Psych Nurse IV
R26 CL
Anchorage

06-N07105
Psych Nurse Asst I
R10 CL
Anchorage

06-N19007
Psych Nurse Asst II
R11 CL
Anchorage

06-N19008
Psych Nurse Asst
III
R12 CL
Anchorage

06-N07106
Psych Nurse I
R22 CL
Anchorage

06-N07107
Psych Nurse II
R23 CL
Anchorage

06-N19009
Psych Nurse III
R25 CL
Anchorage

