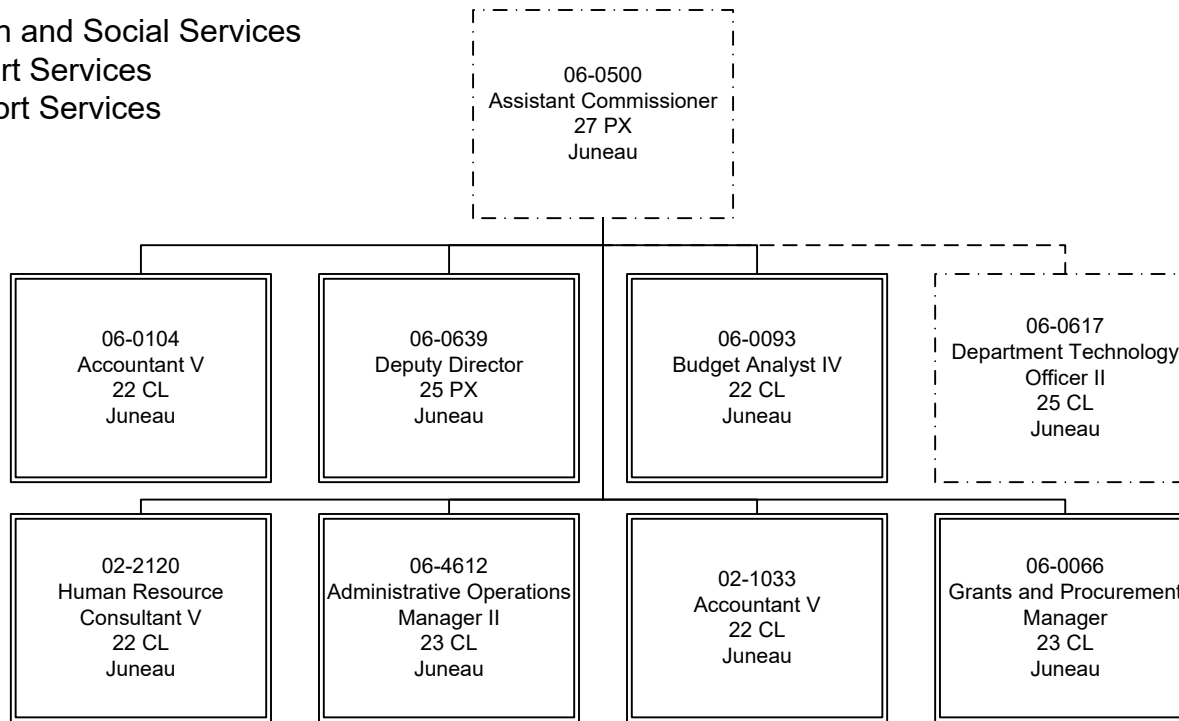
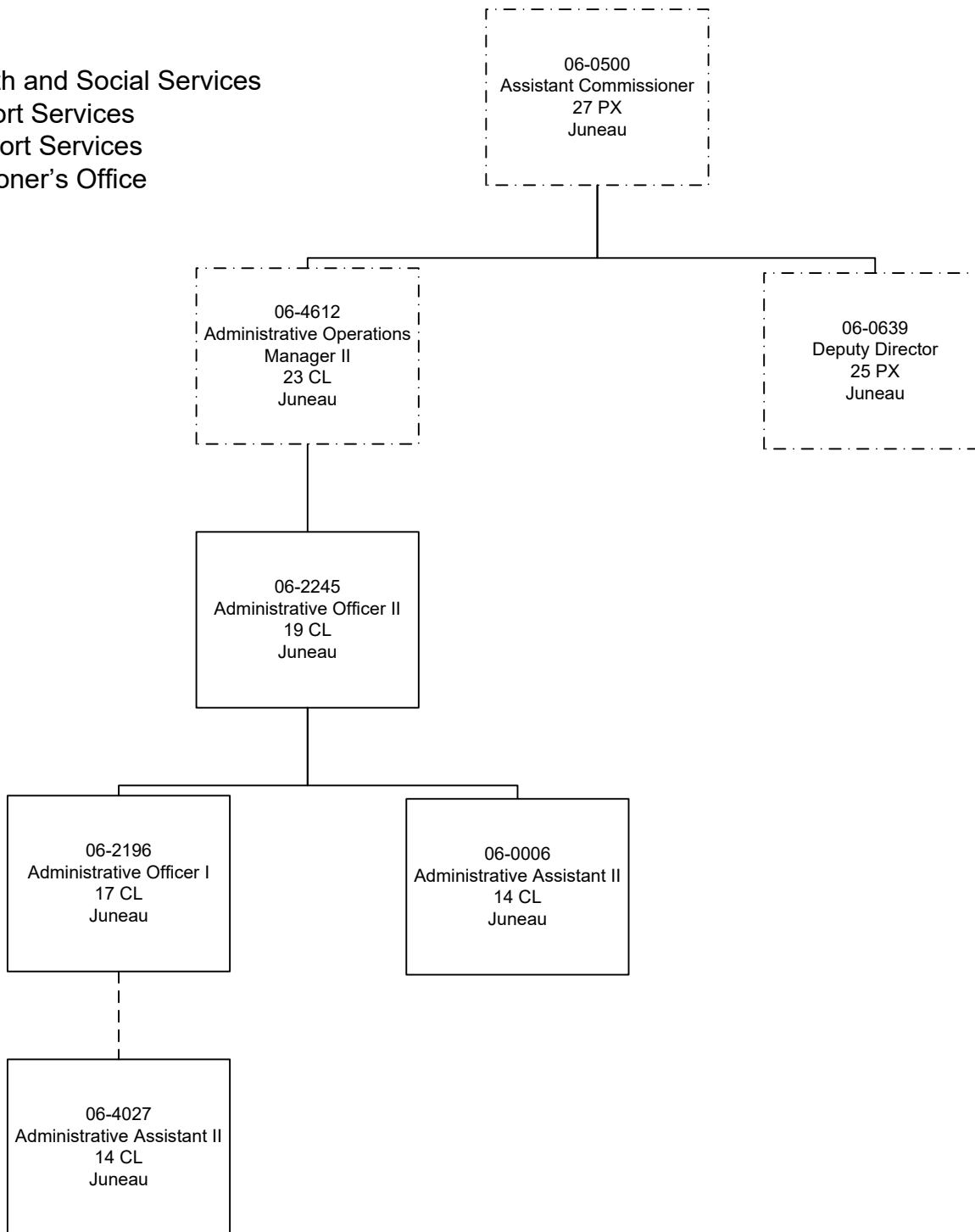


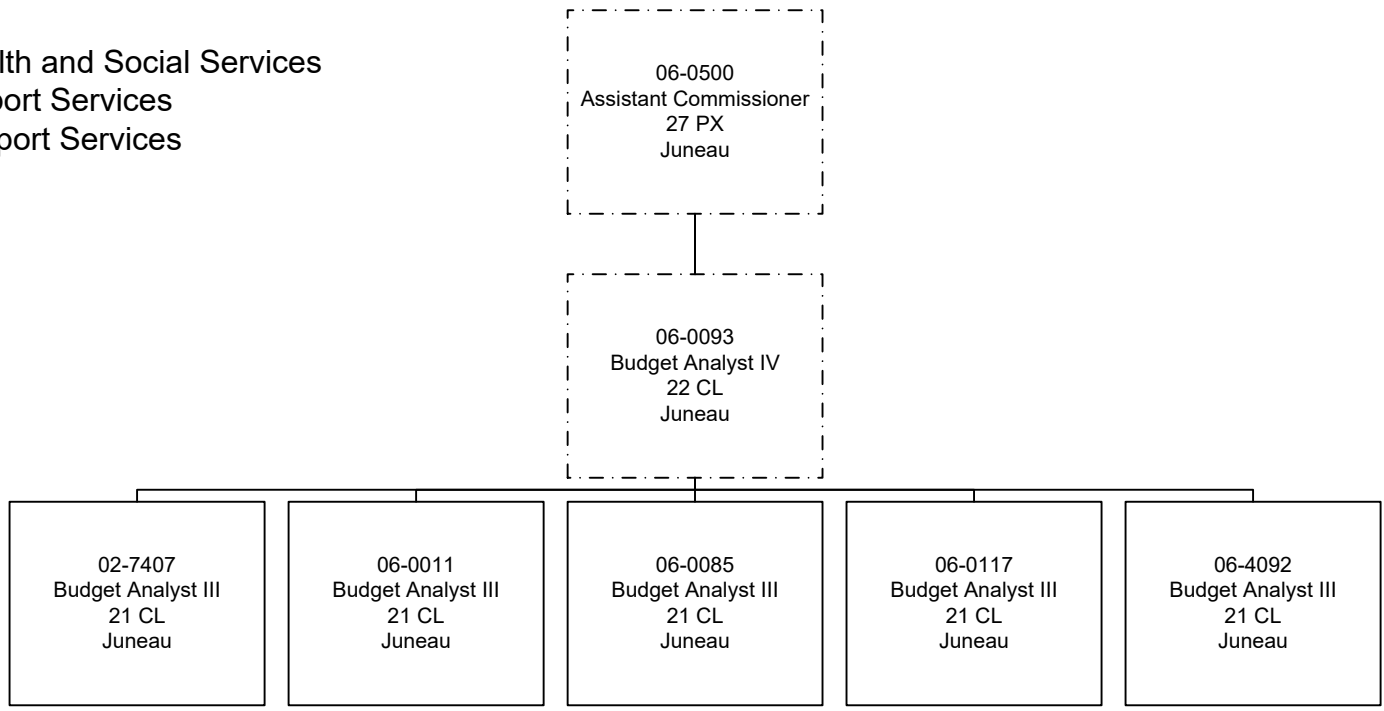
FY2022 Governor  
Department of Health and Social Services  
Departmental Support Services  
Administrative Support Services  
Leadership



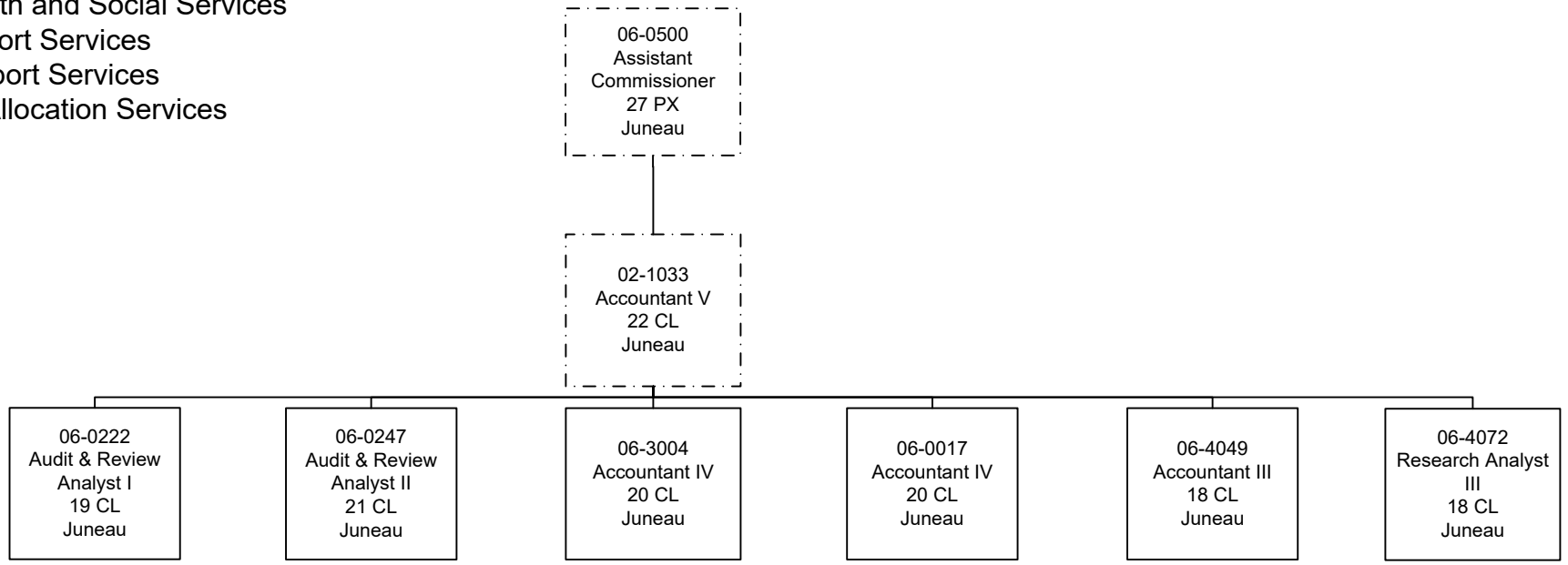
FY2022 Governor  
Department of Health and Social Services  
Departmental Support Services  
Administrative Support Services  
Assistant Commissioner's Office



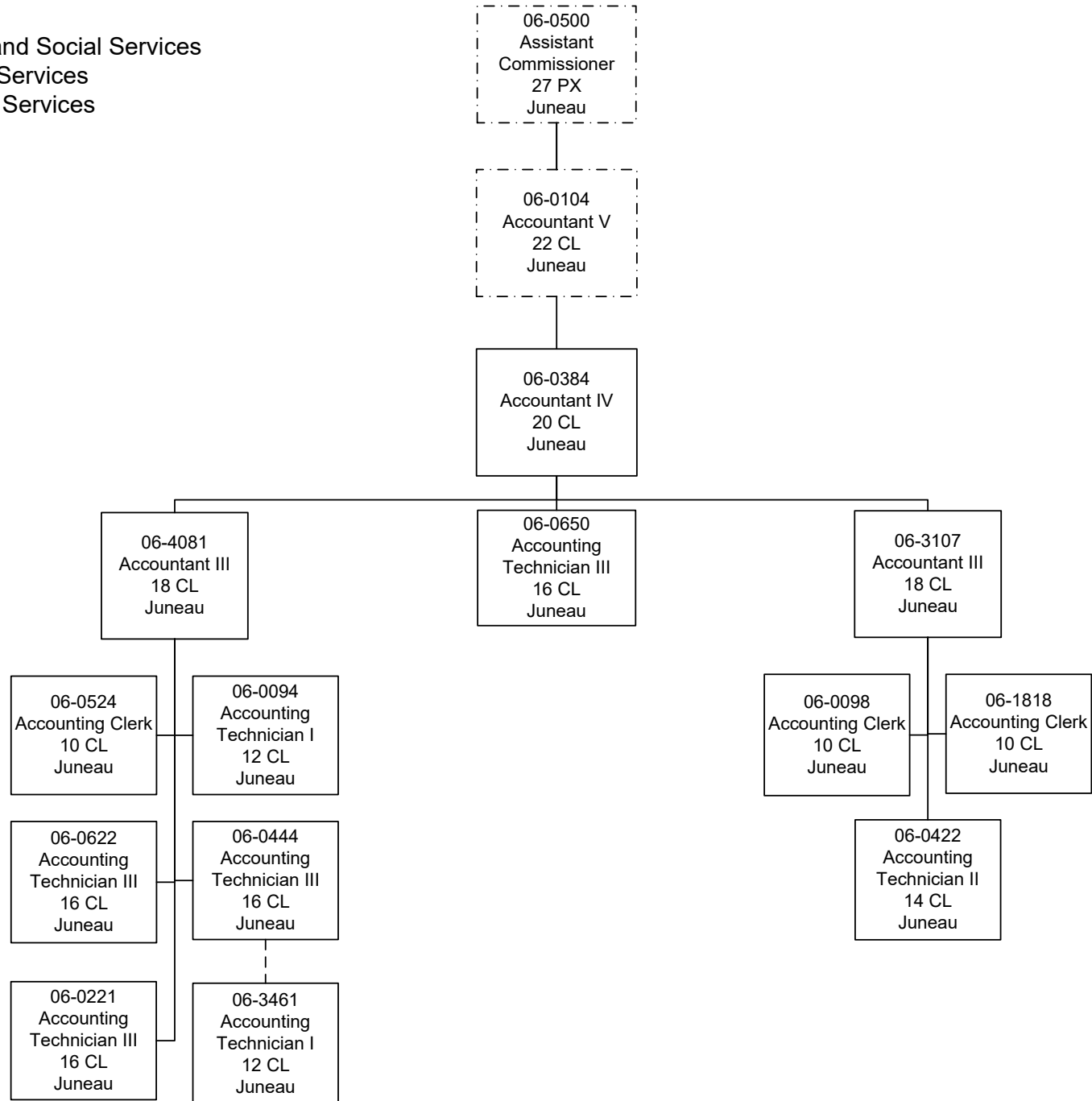
FY2022 Governor  
Department of Health and Social Services  
Departmental Support Services  
Administrative Support Services  
Budget



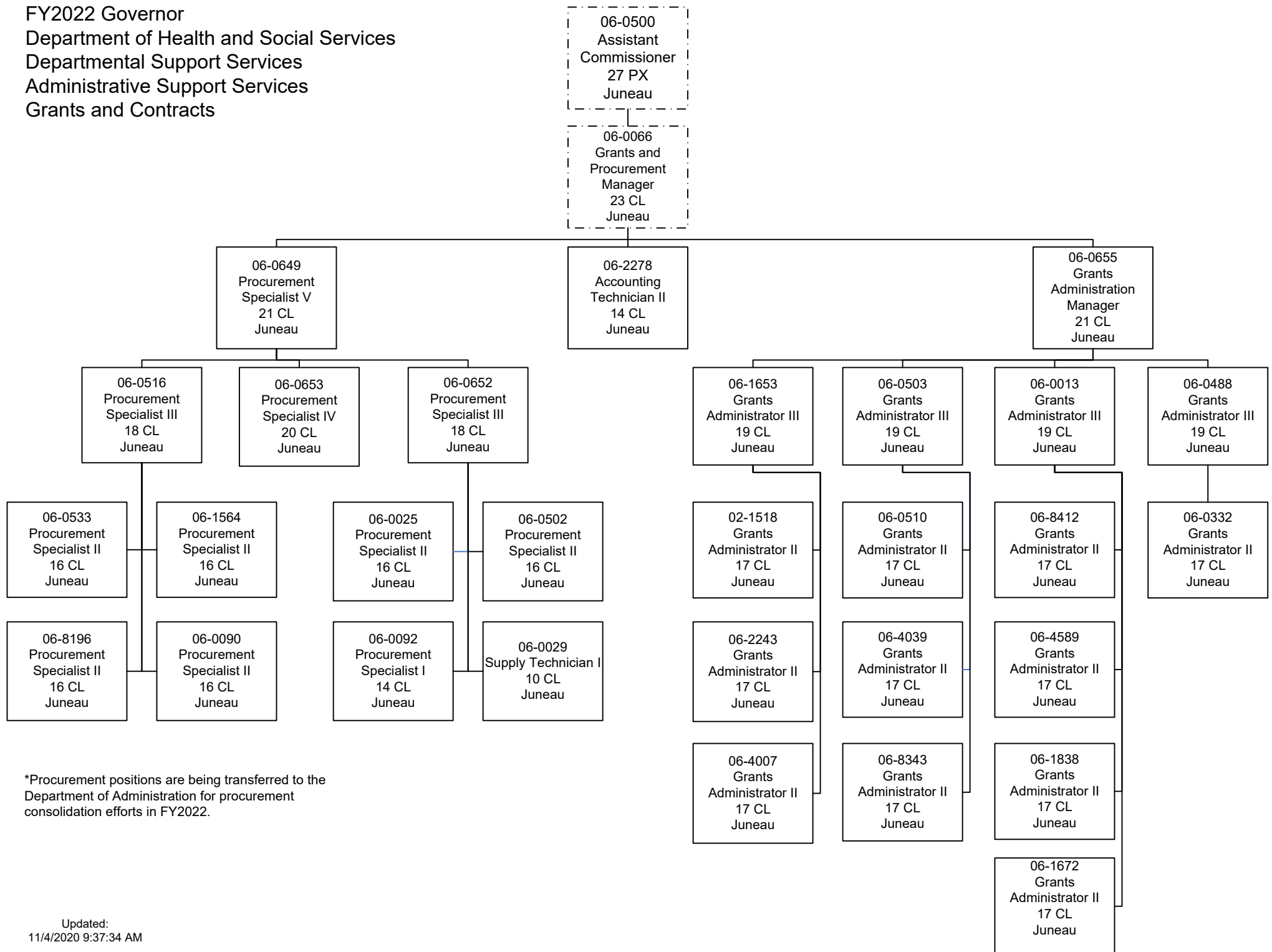
FY2022 Governor  
Department of Health and Social Services  
Departmental Support Services  
Administrative Support Services  
Medicaid, Audit & Allocation Services



FY2022 Governor  
 Department of Health and Social Services  
 Departmental Support Services  
 Administrative Support Services  
 Fiscal Section

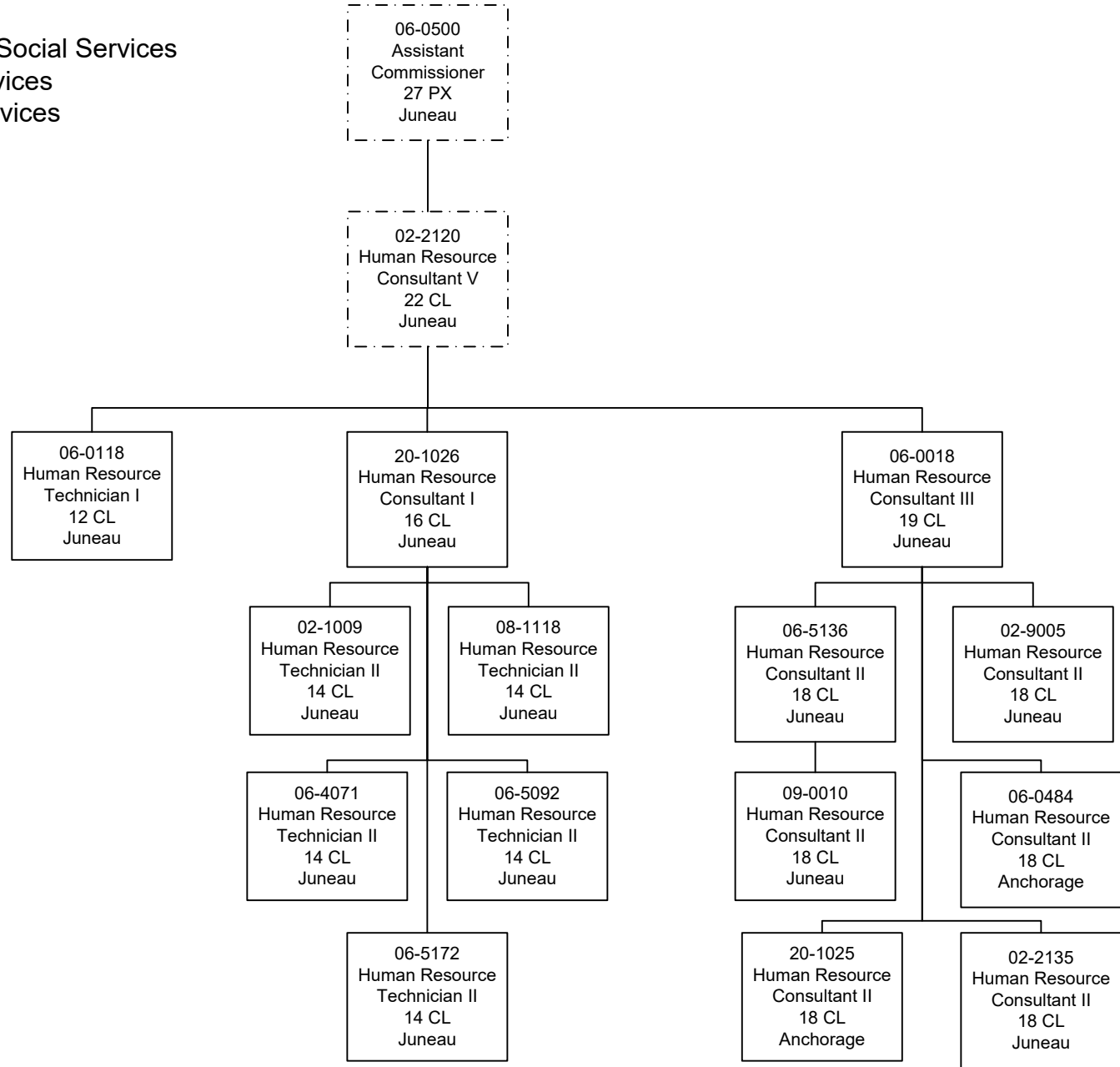


FY2022 Governor  
 Department of Health and Social Services  
 Departmental Support Services  
 Administrative Support Services  
 Grants and Contracts



\*Procurement positions are being transferred to the Department of Administration for procurement consolidation efforts in FY2022.

FY2022 Governor  
 Department of Health and Social Services  
 Departmental Support Services  
 Administrative Support Services  
 Human Resources



02-2136  
 Human Resource  
 Consultant I  
 16 CL  
 Juneau

02-2137  
 Human Resource  
 Consultant II  
 18 CL  
 Juneau

FY2022 Governor  
Department of Health and Social Services  
Departmental Support Services  
Administrative Support Services  
Revenue

