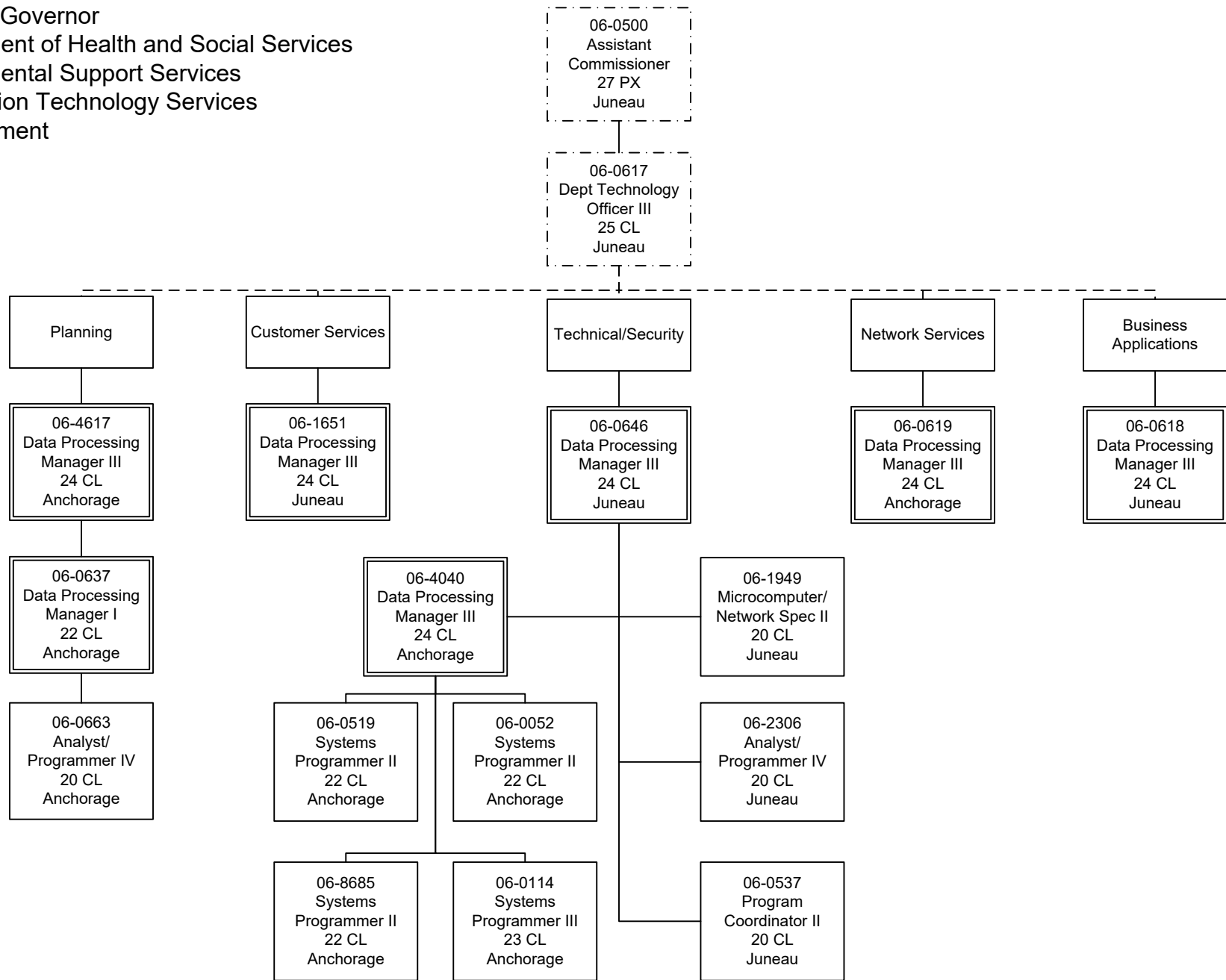


FY2022 Governor
 Department of Health and Social Services
 Departmental Support Services
 Information Technology Services
 Management



FY2022 Governor
 Department of Health and Social Services
 Departmental Support Services
 Information Technology Services
 Business Applications

06-0618
 Data Processing
 Manager III
 24 CL
 Juneau

06-8365
 Data Processing
 Manager II
 23 CL
 Anchorage

06-1860
 Data Processing
 Manager II
 23 CL
 Anchorage

06-8531
 Analyst/Programmer IV
 20 CL
 Anchorage

06-8241
 Analyst/Programmer IV
 20 CL
 Anchorage

06-0629
 Systems Programmer II
 22 CL
 Anchorage

06-1439
 Analyst/Programmer V
 22 CL
 Anchorage

06-1776
 Analyst/Programmer IV
 20 CL
 Anchorage

06-1594
 Analyst/Programmer V
 22 CL
 Anchorage

06-1842
 Analyst/Programmer IV
 20 CL
 Anchorage

06-8530
 Analyst/Programmer IV
 20 CL
 Anchorage

06-8407
 Analyst/Programmer IV
 20 CL
 Anchorage

06-1602
 Systems Programmer II
 22 CL
 Anchorage

06-1910
 Analyst/Programmer IV
 20 CL
 Anchorage

06-1046
 Analyst/Programmer III
 18 CL
 Anchorage

06-1721
 Analyst/Programmer IV
 20 CL
 Anchorage

06-1709
 Analyst/Programmer IV
 20 CL
 Anchorage

06-8395
 Analyst/Programmer III
 18 CL
 Anchorage

06-8426
 Analyst/Programmer III
 18 CL
 Anchorage

06-1618
 Analyst/Programmer IV
 20 CL
 Anchorage

06-1787
 Analyst/Programmer IV
 20 CL
 Anchorage

06-1843
 Analyst/Programmer IV
 20 CL
 Anchorage

06-8360
 Data Processing Tech II
 15 CL
 Anchorage

06-8144
 Analyst/Programmer III
 18 CL
 Anchorage

06-1349
 Analyst/Programmer III
 18 CL
 Anchorage

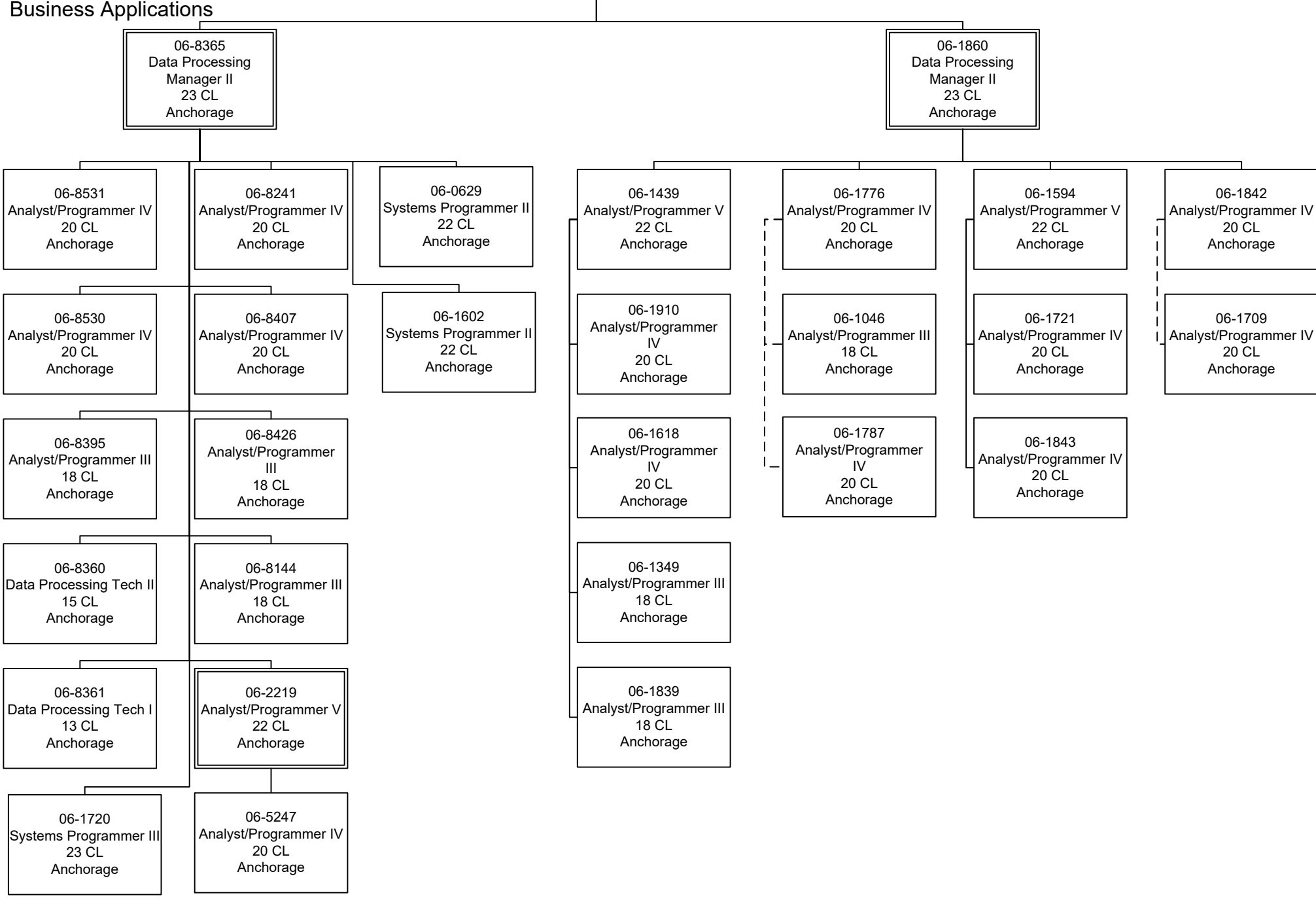
06-8361
 Data Processing Tech I
 13 CL
 Anchorage

06-2219
 Analyst/Programmer V
 22 CL
 Anchorage

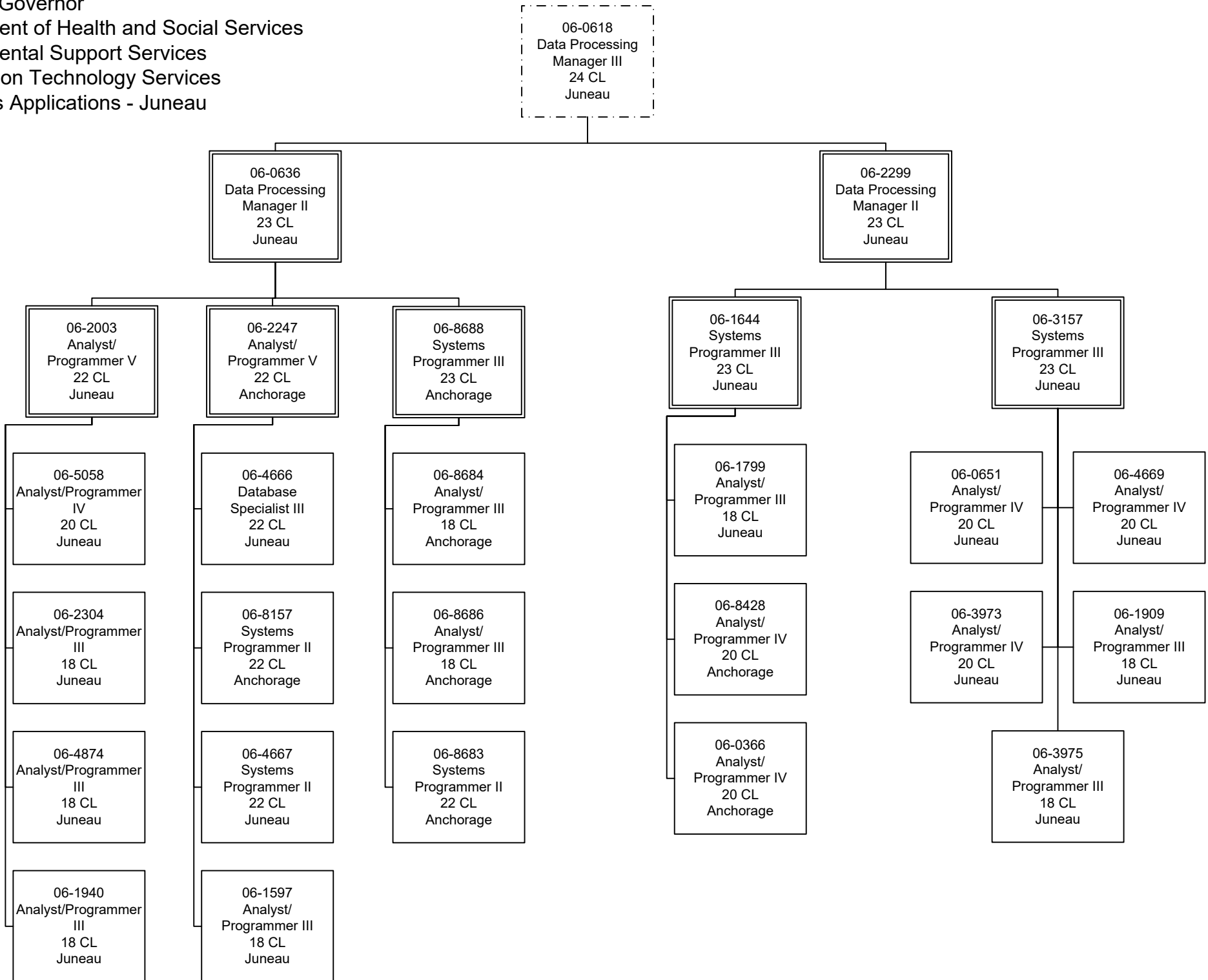
06-1839
 Analyst/Programmer III
 18 CL
 Anchorage

06-1720
 Systems Programmer III
 23 CL
 Anchorage

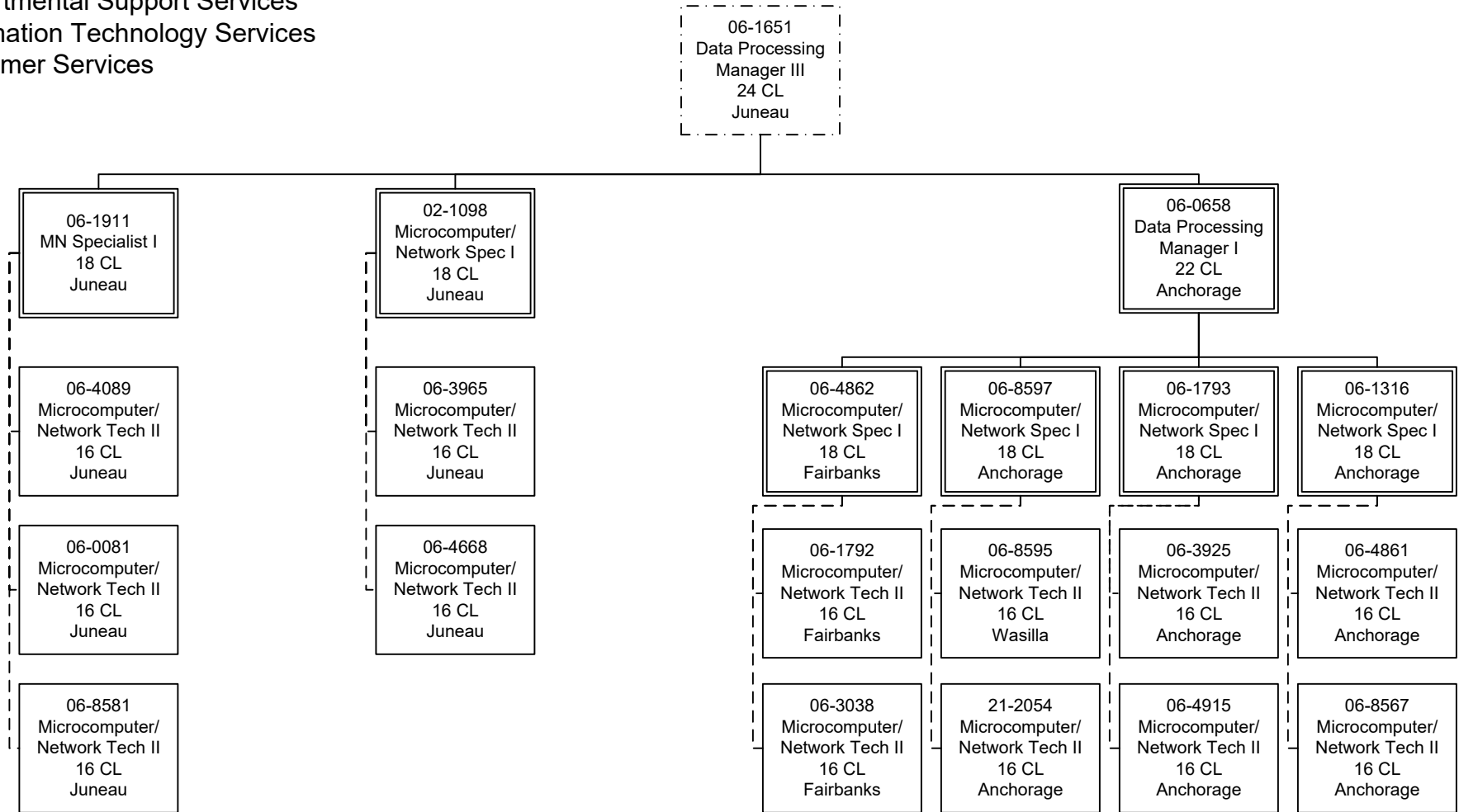
06-5247
 Analyst/Programmer IV
 20 CL
 Anchorage



FY2022 Governor
 Department of Health and Social Services
 Departmental Support Services
 Information Technology Services
 Business Applications - Juneau



FY2022 Governor
 Department of Health and Social Services
 Departmental Support Services
 Information Technology Services
 Customer Services



FY2022 Governor
Department of Health and Social Services
Departmental Support Services
Information Technology Services
Network Services

