

State of Alaska
FY2022 Governor's Operating Budget

Department of Labor and Workforce Development
Workers' Compensation
Component Budget Summary

Component: Workers' Compensation**Contribution to Department's Mission**

Advance injured workers' employment opportunities.

Core Services

- Provide support to insurers, claims administrators, employers, health providers, and injured workers by collecting data, maintaining case files, and reproducing case files, forms, and information to the public, attorneys, and rehabilitation specialists as needed.
- Facilitate the adjudication of disputes between parties through administration of Alaska Workers' Compensation Board hearings.
- Assist injured workers to return to work through administration of the Reemployment Benefits Program.
- Assist employers with alternatives to the commercial insurance market by administering executive officer waiver and workers' compensation self-insurance programs.
- Monitor employer compliance with insurance requirements of the Workers' Compensation Act through administration of the proof-of-insurance program.
- Investigate uninsured employers and Workers' Compensation claim fraud.
- Provide support to the Workers' Compensation Board and the Medical Services Review Committee.

Major Component Accomplishments in 2020

- Worked with the Medical Services Review Committee (MSRC) to continue its “phased-in” cost reduction approach to lowering medical costs gradually, which directly resulted in a 3.7 percent workers' compensation premium rate decrease in May 2016, and helped contribute to the premium rate reductions of 1.6 percent in 2017, 7.9 percent in 2018, and 14.8 percent in 2019. Another significant premium rate reduction is anticipated in 2020.
- Adjudications resolved 93 percent of disputed issues without a formal hearing through prehearings and mediation. Decisions' average days to issuance from record closure was 30 days; 76 percent of decision were issued in 30 days or less. The average days to schedule a hearing after receipt of a hearing request was 92.5. The Anchorage office remains short staffed; however, because a vacant hearing officer position has been filled, a reduction in the time lags is anticipated in FY2021.

Key Component Challenges

Workers' Compensation (WC) continues to be challenged by the impact of division success on revenue collection. WC operations are supported by revenue generated by assessing a fee (2.5 percent) against the premiums paid by employers for workers' compensation insurance. As the division works to reduce workers' compensation premiums in Alaska and premiums decline, revenue to the program also declines.

Significant Changes in Results to be Delivered in FY2022

Workers' Compensation anticipates increased service by electronic means, to include hearings by video conference, and increased electronic filing of pleadings and evidence.

Statutory and Regulatory Authority

Statutory Authority:

AS 23.05.067
AS 23.30.005 - .400

Fees for Administration of Workers' Compensation
Alaska Workers' Compensation Act

Administrative Regulations:

8 AAC 45.010 - .900

8 AAC 46.010 - .900

Compensation/Medical Benefits & Board Proceedings

Self Insurance

Contact Information
<p>Contact: Charles Collins, Director Phone: (907) 465-6060 E-mail: Charles.Collins@alaska.gov</p>

Workers' Compensation Personal Services Information					
Authorized Positions			Personal Services Costs		
	FY2021 Management Plan	FY2022 Governor			
Full-time	45	45	Annual Salaries		3,018,846
Part-time	0	0	COLA		30,951
Nonpermanent	2	2	Premium Pay		0
			Annual Benefits		1,853,352
			Less 6.00% Vacancy Factor		(294,189)
			Lump Sum Premium Pay		0
			Board Honoraria		45,506
Totals	47	47	Total Personal Services		4,654,466

Position Classification Summary					
Job Class Title	Anchorage	Fairbanks	Juneau	Others	Total
Administrative Assistant II	0	0	1	0	1
Administrative Officer II	0	0	1	0	1
Chf of W/C Adj	1	0	0	0	1
Division Director - Px	0	0	1	0	1
Investigator II	1	0	0	0	1
Investigator III	2	1	1	0	4
Investigator IV	1	0	0	0	1
Office Assistant I	4	0	4	0	8
Office Assistant II	1	1	1	0	3
Program Coordinator I	0	0	1	0	1
Project Assistant	0	0	1	0	1
Reemp Benef Adm	1	0	0	0	1
Student Intern I	1	0	1	0	2
W/C Hear Ofc I	1	0	0	0	1
W/C Hear Ofc II	4	2	1	0	7
Work Comp Ofcii	5	1	1	0	7
Work Comp Tech	2	1	1	0	4
Workers Compensation Officer I	2	0	0	0	2
Totals	26	6	15	0	47

Component Board Summary					
Board Description	Member Count	Pay Per Day	Budgeted Days	Additional Pay	Total Cost
Workers Compensation Board	18	50.00	47	0.00	45,506.34
Total					45,506.34

Component Detail All Funds
Department of Labor and Workforce Development

Component: Workers' Compensation (344)
RDU: Workers' Compensation (112)

Non-Formula Component

	FY2020 Actuals	FY2021 Conference Committee	FY2021 Authorized	FY2021 Management Plan	FY2022 Governor	FY2021 Management Plan vs FY2022 Governor	
71000 Personal Services	4,284.8	4,534.4	4,534.4	4,538.6	4,654.5	115.9	2.6%
72000 Travel	22.0	38.2	38.2	49.1	49.1	0.0	0.0%
73000 Services	944.1	1,125.8	1,125.8	1,114.9	1,028.1	-86.8	-7.8%
74000 Commodities	68.7	85.1	85.1	80.9	80.9	0.0	0.0%
75000 Capital Outlay	0.0	6.0	6.0	6.0	6.0	0.0	0.0%
77000 Grants, Benefits	11.7	12.0	12.0	12.0	12.0	0.0	0.0%
78000 Miscellaneous	0.0	0.0	0.0	0.0	0.0	0.0	0.0%
Totals	5,331.3	5,801.5	5,801.5	5,801.5	5,830.6	29.1	0.5%
Fund Sources:							
1007 I/A Rcpts (Other)	1.4	0.0	0.0	0.0	0.0	0.0	0.0%
1157 Wrkrs Safe (DGF)	5,329.9	5,801.5	5,801.5	5,801.5	5,830.6	29.1	0.5%
Unrestricted General (UGF)	0.0	0.0	0.0	0.0	0.0	0.0	0.0%
Designated General (DGF)	5,329.9	5,801.5	5,801.5	5,801.5	5,830.6	29.1	0.5%
Other Funds	1.4	0.0	0.0	0.0	0.0	0.0	0.0%
Federal Funds	0.0	0.0	0.0	0.0	0.0	0.0	0.0%
Positions:							
Permanent Full Time	45	45	45	45	45	0	0.0%
Permanent Part Time	0	0	0	0	0	0	0.0%
Non Permanent	2	2	2	2	2	0	0.0%

Change Record Detail - Multiple Scenarios with Descriptions
Department of Labor and Workforce Development

Component: Workers' Compensation (344)

RDU: Workers' Compensation (112)

Scenario/Change Record Title	Trans Type	Totals	Personal Services	Travel	Services	Commodities	Capital Outlay	Grants, Benefits	Miscellaneous	Positions		NP
										PFT	PPT	
***** Changes From FY2021 Conference Committee To FY2021 Authorized *****												
Conference Committee												
1157 Wrkrs Safe	ConfCom	5,801.5	4,534.4	38.2	1,125.8	85.1	6.0	12.0	0.0	45	0	2
		5,801.5										
Subtotal		5,801.5	4,534.4	38.2	1,125.8	85.1	6.0	12.0	0.0	45	0	2
***** Changes From FY2021 Authorized To FY2021 Management Plan *****												
Align Authority with Anticipated Expenditures												
	LIT	0.0	4.2	10.9	-10.9	-4.2	0.0	0.0	0.0	0	0	0
Transfer authority from services and commodities to cover anticipated personal services and travel costs. The remaining services and commodities authority is sufficient to cover anticipated expenditures.												
Subtotal		5,801.5	4,538.6	49.1	1,114.9	80.9	6.0	12.0	0.0	45	0	2
***** Changes From FY2021 Management Plan To FY2022 Governor *****												
FY2022 Salary Adjustments												
1157 Wrkrs Safe	SalAdj	29.1	29.1	0.0	0.0	0.0	0.0	0.0	0.0	0	0	0
		29.1										
FY2022 1% COLA for ASEA/General Government (GG/GP/GY/GZ): \$29.1.												
Transfer Authority from Services to Personal Services for Anticipated Expenditures												
	LIT	0.0	86.8	0.0	-86.8	0.0	0.0	0.0	0.0	0	0	0
Transfer authority from services for anticipated personal services costs. The remaining services authority is sufficient to cover anticipated expenditures.												
Totals		5,830.6	4,654.5	49.1	1,028.1	80.9	6.0	12.0	0.0	45	0	2

Line Item Detail (1676)
Department of Labor and Workforce Development
Travel

Component: Workers' Compensation (344)

Line Number	Line Name		FY2020 Actuals	FY2021 Management Plan	FY2022 Governor
2000	Travel		22.0	49.1	49.1
Object Class	Servicing Agency	Explanation	FY2020 Actuals	FY2021 Management Plan	FY2022 Governor
2000 Travel Detail Totals			22.0	49.1	49.1
2000	In-State Employee Travel	In-state employee travel to support the department's mission.	21.3	34.1	34.1
2001	In-State Non-Employee Travel	In-state Workers' Compensation Board members travel.	0.7	15.0	15.0

Line Item Detail (1676)
Department of Labor and Workforce Development
Services

Component: Workers' Compensation (344)

Line Number	Line Name		FY2020 Actuals	FY2021 Management Plan	FY2022 Governor
3000	Services		944.1	1,114.9	1,028.1
Object Class	Servicing Agency	Explanation	FY2020 Actuals	FY2021 Management Plan	FY2022 Governor
3000 Services Detail Totals			944.1	1,114.9	1,028.1
3000	Education Services	Training, education, and memberships.	3.3	3.3	3.0
3001	Financial Services	Fee schedule contract (Optum); management consulting and interest expense.	23.9	25.0	25.0
3002	Legal and Judicial Services	Custody care, attorney fees, expert and non-expert witnesses, mediation services, transcription and recording services, case costs, and settlement fees.	2.2	2.0	2.0
3003	Information Technology	Information technology, including training, consulting, leases, and software licensing and maintenance.	5.7	8.0	8.0
3004	Telecommunications	Local, long distance, and cellular telephone charges, television, data/network, telecommunication equipment, and other wireless charges from outside vendors.	32.4	33.0	33.0
3006	Delivery Services	Freight, courier services, and postage.	30.2	40.0	35.0
3007	Advertising and Promotions	Advertising for regulation changes, board meetings, recruitments, or other public notices.	0.9	2.0	2.0
3008	Utilities	Electricity, heating fuel, water, sewage, recycling, heating fuel, trash, and confidential document and other disposal services.	12.0	12.0	12.0

Line Item Detail (1676)
Department of Labor and Workforce Development
Services

Component: Workers' Compensation (344)

Object Class	Servicing Agency	Explanation	FY2020 Actuals	FY2021 Management Plan	FY2022 Governor
3000 Services Detail Totals			944.1	1,114.9	1,028.1
3009	Structure/Infrastructure/Land	Room rental for training and seminar space, board or council meetings, or storage and archiving needs.	8.8	12.0	10.0
3010	Equipment/Machinery	Machinery, furniture, and equipment purchase, repairs, maintenance, rentals, and leases.	10.6	11.0	11.0
3011	Other Services	Other services, including interpreters; consulting; print, copy, and graphic services; and safety services.	8.1	7.3	8.0
3012	Inter-Agency Federal Indirect Rate Allocation	Labor - Management Services (335) Indirect cost allocation for departmental purchasing, accounting, reports, personnel consultation and other services provided by Management Services.	254.1	260.0	264.0
3013	Inter-Agency Data Processing Operations Allocation	Labor - Data Processing (334) Allocation for Data Processing network and support services.	0.0	191.8	191.8
3016	Inter-Agency Economic Development	E&ED - Department-wide Reimbursable services agreement with Education & Early Development for digitization services.	0.0	0.1	0.2
3016	Inter-Agency Economic Development	Labor - Data Processing (334) Reimbursable services agreement with Data Processing for system maintenance and enhancements.	75.1	75.0	75.0
3017	Inter-Agency Information Technology Non-Telecommunications	Admin - Department-wide Reimbursable services agreement with the Office of Information Technology rate for non-telecommunications support, including software and computer services.	132.5	132.5	0.0
3018	Inter-Agency Information Technology Telecommunications	Admin - Department-wide Reimbursable services agreement with the Office of Information Technology for telecommunication support.	23.0	23.0	23.0

Line Item Detail (1676)
Department of Labor and Workforce Development
Services

Component: Workers' Compensation (344)

Object Class		Servicing Agency	Explanation	FY2020 Actuals	FY2021 Management Plan	FY2022 Governor
3000 Services Detail Totals				944.1	1,114.9	1,028.1
3021	Inter-Agency Mail	Admin - Department-wide	Reimbursable services agreement with Shared Services of Alaska for central mailroom support and services.	32.7	25.4	25.4
3022	Inter-Agency Human Resources	Admin - Department-wide	Reimbursable services agreement with the Division of Personnel and Labor Relations for human resources and personnel services.	51.1	32.9	32.9
3023	Inter-Agency Building Leases	Admin - Department-wide	State-owned facility space rent or other property leases.	156.8	157.6	157.6
3024	Inter-Agency Legal	Law - Department-wide	Reimbursable services agreement with the Department of Law for legal services.	59.5	60.0	60.0
3025	Inter-Agency Auditing	Admin - Department-wide	Reimbursable services agreement with the Department of Administration for auditing services, including federal compliance audits.	1.2	1.0	1.5
3026	Inter-Agency Insurance	Admin - Department-wide	Reimbursable services agreement with the Division of Risk Management for risk management insurance charges for leased buildings, repossessed properties, public official bonds, and overhead.	3.3	0.0	3.3
3027	Inter-Agency Financial	Admin - Department-wide	Reimbursable services agreement with the Division of Finance for system services for State accounting and payroll (IRIS), and reporting (ALDER) systems.	7.2	0.0	7.7
3027	Inter-Agency Financial	Labor - Unemployment Insurance (2276)	Reimbursable services agreement with Unemployment Insurance for maintenance of the Secure Access Manager system.	1.5	0.0	4.4
3027	Inter-Agency Financial	Admin - Department-wide	Reimbursable services agreement with Shared Services of Alaska for	0.0	0.0	24.2

Line Item Detail (1676)
Department of Labor and Workforce Development
Services

Component: Workers' Compensation (344)

Object Class	Servicing Agency	Explanation	FY2020 Actuals	FY2021 Management Plan	FY2022 Governor	
3000 Services Detail Totals			944.1	1,114.9	1,028.1	
		travel and accounts payable services.				
3028	Inter-Agency Americans with Disabilities Act Compliance	Admin - Department-wide	Reimbursable services agreement with the Department of Administration for Americans with Disabilities Act (ADA) services.	0.0	0.0	0.1
3037	State Equipment Fleet	Trans - Department-wide	State equipment fleet fixed cost services for equipment replacement, maintenance and fuel, both allowable and non-allowable.	8.0	0.0	8.0

Line Item Detail (1676)
Department of Labor and Workforce Development
Commodities

Component: Workers' Compensation (344)

Line Number	Line Name		FY2020 Actuals	FY2021 Management Plan	FY2022 Governor
4000	Commodities		68.7	80.9	80.9
Object Class	Servicing Agency	Explanation	FY2020 Actuals	FY2021 Management Plan	FY2022 Governor
4000 Commodities Detail Totals			68.7	80.9	80.9
4000	Business	General business supplies such as office consumables and computer equipment.	68.3	80.4	80.4
4002	Household/Institutional	Office supplies, supplies and consumables for public meetings, and cleaning products.	0.4	0.5	0.5

Line Item Detail (1676)
Department of Labor and Workforce Development
Capital Outlay

Component: Workers' Compensation (344)

Line Number	Line Name		FY2020 Actuals	FY2021 Management Plan	FY2022 Governor
5000	Capital Outlay		0.0	6.0	6.0
Object Class	Servicing Agency	Explanation	FY2020 Actuals	FY2021 Management Plan	FY2022 Governor
5000 Capital Outlay Detail Totals			0.0	6.0	6.0
5004	Equipment	Office equipment.	0.0	6.0	6.0

Line Item Detail (1676)
Department of Labor and Workforce Development
Grants, Benefits

Component: Workers' Compensation (344)

Line Number	Line Name		FY2020 Actuals	FY2021 Management Plan	FY2022 Governor
7000	Grants, Benefits		11.7	12.0	12.0
Object Class	Servicing Agency	Explanation	FY2020 Actuals	FY2021 Management Plan	FY2022 Governor
		7000 Grants, Benefits Detail Totals	11.7	12.0	12.0
7002	Benefits	Supplemental workers' compensation benefits to permanently disabled workers in compliance with a 1974 amendment to the Workers' Compensation Act (AS 23.30.172).	11.7	12.0	12.0

Revenue Detail (1681)
Department of Labor and Workforce Development

Component: Workers' Compensation (344)

Revenue Type (OMB Fund Code) Revenue Source	Component	Comment	FY2020 Actuals	FY2021 Management Plan	FY2022 Governor
5007 I/A Rcpts (1007 I/A Rcpts)			1.4	0.0	0.0
5301 Inter-Agency Receipts		Reimbursable agreement with Governor's Office for COVID-19 related costs.	1.4	0.0	0.0
6157 Wrkrs Safe (1157 Wrkrs Safe)			7,842.7	5,801.5	5,830.6
6780 Workers Safety/Compensation Adminstrtn Acct - Ins Prem Tax	Commerce - Department-wide	Workers' Compensation Service fee transfer from insurance premium tax collections in the Department of Commerce, Community, and Economic Development's Division of Insurance. These funds were deposited in the Workers' Safety Compensation Administration Account.	5,600.2	4,200.0	4,230.0
6780 Workers Safety/Compensation Adminstrtn Acct - Ins Prem Tax		The Workers' Safety and Compensation Administration Account (AS 23.05.067) is funded by assessing a fee (2.5 percent) against the premiums paid by employers for workers' compensation insurance; for those self-insured employers, the amount is 2.7 percent of the claims paid.	1,667.5	1,301.5	1,300.6
6782 Workers Safety/Compensation Administration Account-Misc		Miscellaneous receipts deposited in the Workers' Safety and Compensation Administration Account (AS 23.05.067), including copy fees, stipulations, and other fees.	0.9	0.0	0.0
6783 Workers Safety/Compensation Admin Account-Penalties		Penalties for late filed Compensation reports. This revenue was previously deposited into the Second Injury Fund, but is now deposited into the Worker Safety and Compensation	574.1	300.0	300.0

Revenue Detail (1681)
Department of Labor and Workforce Development

Component: Workers' Compensation (344)

Revenue Type (OMB Fund Code)	Component	Comment	FY2020 Actuals	FY2021 Management Plan	FY2022 Governor
Revenue Source		Administrative Account as established in 2018 by HB79.			

Inter-Agency Services (1682)
Department of Labor and Workforce Development

Component: Workers' Compensation (344)

				FY2020 Actuals	FY2021 Management Plan	FY2022 Governor
Component Totals				806.0	959.3	879.1
With Department of Labor and Workforce Development				330.7	526.8	535.2
With Department of Education and Early Development				0.0	0.1	0.2
With Department of Administration				407.8	372.4	275.7
With Department of Law				59.5	60.0	60.0
With Department of Transportation/Public Facilities				8.0	0.0	8.0

Object Class	Servicing Agency	Explanation	FY2020 Actuals	FY2021 Management Plan	FY2022 Governor
3012 Inter-Agency Federal Indirect Rate Allocation	Labor - Management Services (335)	Indirect cost allocation for departmental purchasing, accounting, reports, personnel consultation and other services provided by Management Services.	254.1	260.0	264.0
3013 Inter-Agency Data Processing Operations Allocation	Labor - Data Processing (334)	Allocation for Data Processing network and support services.	0.0	191.8	191.8
3016 Inter-Agency Economic Development	E&ED - Department-wide	Reimbursable services agreement with Education & Early Development for digitization services.	0.0	0.1	0.2
3016 Inter-Agency Economic Development	Labor - Data Processing (334)	Reimbursable services agreement with Data Processing for system maintenance and enhancements.	75.1	75.0	75.0
3017 Inter-Agency Information Technology Non-Telecommunications	Admin - Department-wide	Reimbursable services agreement with the Office of Information Technology rate for non-telecommunications support, including software and computer services.	132.5	132.5	0.0
3018 Inter-Agency Information Technology Telecommunications	Admin - Department-wide	Reimbursable services agreement with the Office of Information Technology for telecommunication support.	23.0	23.0	23.0

Inter-Agency Services (1682)
Department of Labor and Workforce Development

Component: Workers' Compensation (344)

Object Class		Servicing Agency	Explanation	FY2020 Actuals	FY2021 Management Plan	FY2022 Governor
3021	Inter-Agency Mail	Admin - Department-wide	Reimbursable services agreement with Shared Services of Alaska for central mailroom support and services.	32.7	25.4	25.4
3022	Inter-Agency Human Resources	Admin - Department-wide	Reimbursable services agreement with the Division of Personnel and Labor Relations for human resources and personnel services.	51.1	32.9	32.9
3023	Inter-Agency Building Leases	Admin - Department-wide	State-owned facility space rent or other property leases.	156.8	157.6	157.6
3024	Inter-Agency Legal	Law - Department-wide	Reimbursable services agreement with the Department of Law for legal services.	59.5	60.0	60.0
3025	Inter-Agency Auditing	Admin - Department-wide	Reimbursable services agreement with the Department of Administration for auditing services, including federal compliance audits.	1.2	1.0	1.5
3026	Inter-Agency Insurance	Admin - Department-wide	Reimbursable services agreement with the Division of Risk Management for risk management insurance charges for leased buildings, repossessed properties, public official bonds, and overhead.	3.3	0.0	3.3
3027	Inter-Agency Financial	Admin - Department-wide	Reimbursable services agreement with the Division of Finance for system services for State accounting and payroll (IRIS), and reporting (ALDER) systems.	7.2	0.0	7.7
3027	Inter-Agency Financial	Labor - Unemployment Insurance (2276)	Reimbursable services agreement with Unemployment Insurance for maintenance of the Secure Access Manager system.	1.5	0.0	4.4
3027	Inter-Agency Financial	Admin - Department-wide	Reimbursable services agreement with Shared Services of Alaska for travel and accounts payable services.	0.0	0.0	24.2

Inter-Agency Services (1682)
Department of Labor and Workforce Development

Component: Workers' Compensation (344)

Object Class		Servicing Agency	Explanation	FY2020 Actuals	FY2021 Management Plan	FY2022 Governor
3028	Inter-Agency Americans with Disabilities Act Compliance	Admin - Department-wide	Reimbursable services agreement with the Department of Administration for Americans with Disabilities Act (ADA) services.	0.0	0.0	0.1
3037	State Equipment Fleet	Trans - Department-wide	State equipment fleet fixed cost services for equipment replacement, maintenance and fuel, both allowable and non-allowable.	8.0	0.0	8.0

Personal Services Expenditure Detail
Department of Labor and Workforce Development

Scenario: FY2022 Governor (17280)
Component: Workers' Compensation (344)
RDU: Workers' Compensation (112)

PCN	Job Class Title	Time Status	Retire Code	Barg Unit	Location	Salary Sched	Range / Step	Comp Months	Split / Count	Annual Salaries	COLA	Premium Pay	Annual Benefits	Total Costs	UGF Amount
07-1026	Program Coordinator I	FT	A	SS	Juneau	205	18K	6.0	**	42,921	0	0	24,171	67,092	0
07-1720	Office Assistant I	FT	A	GP	Juneau	205	8D / E	12.0		36,338	488	0	31,283	68,109	0
07-3001	Division Director - Px	FT	A	XE	Juneau	N05	27D / E	8.0	**	82,703	0	0	40,891	123,594	0
07-3003	Office Assistant I	FT	A	GP	Juneau	205	8D / E	12.0		36,163	486	0	31,223	67,872	0
07-3004	Work Comp Tech	FT	A	GP	Juneau	205	12B / C	12.0		43,679	587	0	33,807	78,073	0
07-3005	Chf of W/C Adj	FT	A	XE	Anchorage	N00	24A / B	12.0		91,616	0	0	50,184	141,800	0
07-3007	Work Comp Ofcii	FT	A	GP	Anchorage	99	18N / O	12.0		88,356	1,187	0	49,167	138,710	0
07-3009	Work Comp Ofcii	FT	A	SS	Juneau	605	18B / C	12.0		69,770	0	0	42,817	112,587	0
07-3010	Office Assistant I	FT	A	GP	Juneau	205	8L / M	12.0		44,265	595	0	34,009	78,869	0
07-3011	Office Assistant I	FT	A	GP	Anchorage	200	8J / K	12.0		39,970	537	0	32,532	73,039	0
07-3012	Work Comp Ofcii	FT	A	GP	Anchorage	200	18J	12.0		76,050	1,022	0	44,936	122,008	0
07-3013	W/C Hear Ofc II	FT	A	GP	Anchorage	200	22B / C	12.0		82,451	1,108	0	47,137	130,696	0
07-3014	Office Assistant II	FT	A	GP	Juneau	99	10Q / R	12.0		59,561	800	0	39,267	99,628	0
07-3024	Work Comp Ofcii	FT	A	SS	Fairbanks	99	18M / N	12.0		91,046	0	0	50,132	141,178	0
07-3025	Work Comp Tech	FT	A	GP	Anchorage	200	12C / D	12.0		42,618	573	0	33,442	76,633	0
07-3026	Administrative Officer II	FT	A	SS	Juneau	205	19E / F	8.0	**	56,282	0	0	31,903	88,185	0
07-3027	Work Comp Ofcii	FT	A	GP	Anchorage	200	18K / L	12.0		78,739	1,058	0	45,861	125,658	0
07-3030	Work Comp Tech	FT	A	GP	Anchorage	200	12J / K	12.0		50,833	683	0	36,267	87,783	0
07-3031	Workers Compensation Officer I	FT	A	GP	Anchorage	200	16B / C	12.0		55,294	743	0	37,800	93,837	0
07-3036	Office Assistant II	FT	A	GP	Fairbanks	203	10E / F	12.0		41,685	560	0	33,122	75,367	0
07-3037	Office Assistant II	FT	A	GP	Anchorage	200	10J / K	12.0		44,289	595	0	34,017	78,901	0
07-3040	Work Comp Ofcii	FT	A	GP	Anchorage	200	18C / D	12.0		64,066	861	0	40,816	105,743	0
07-3042	W/C Hear Ofc II	FT	A	GP	Fairbanks	203	22B / C	12.0		85,462	1,148	0	48,172	134,782	0
07-3043	W/C Hear Ofc I	FT	A	GP	Anchorage	200	21C / D	12.0		80,392	1,080	0	46,429	127,901	0
07-3044	W/C Hear Ofc II	FT	A	GP	Fairbanks	203	22G / J	12.0		99,406	1,336	0	52,966	153,708	0
07-3046	Workers Compensation Officer I	FT	A	GP	Juneau	205	16M	6.0	*	38,444	611	0	22,612	61,667	0
07-3047	Reemp Benef Adm	FT	A	XE	Anchorage	N00	22E / F	12.0		92,152	0	0	50,368	142,520	0
07-3051	W/C Hear Ofc II	FT	A	GP	Anchorage	200	22K	12.0		102,902	1,383	0	54,168	158,453	0
07-3052	Office Assistant I	FT	A	GP	Anchorage	200	8D / E	12.0		34,775	467	0	30,746	65,988	0
07-3055	Administrative Assistant II	FT	A	SS	Juneau	505	14A / B	8.0	**	34,143	0	0	24,292	58,435	0
07-3056	Workers Compensation Officer I	FT	A	GP	Anchorage	200	16A / B	12.0		53,060	713	0	37,032	90,805	0
07-3058	Work Comp Ofcii	FT	A	SS	Anchorage	600	18E / F	12.0		74,027	0	0	44,281	118,308	0
07-3059	W/C Hear Ofc II	FT	A	GP	Anchorage	200	22K / L	12.0		106,256	1,428	0	55,321	163,005	0
07-3060	W/C Hear Ofc II	FT	A	GP	Anchorage	200	22L / M	12.0		109,132	1,467	0	56,310	166,909	0
07-3061	W/C Hear Ofc II	FT	A	GP	Juneau	205	22E / F	12.0		93,903	1,262	0	51,074	146,239	0
07-3062	Office Assistant I	FT	A	GP	Juneau	205	8J	12.0		40,970	551	0	32,876	74,397	0

Note: If a position is split, an asterisk (*) will appear in the Split/Count column. If the split position is also counted in the component, two asterisks (**) will appear in this column. [No valid job title] appearing in the Job Class Title indicates that the PCN has an invalid class code or invalid range for the class code effective date of this scenario.

Personal Services Expenditure Detail
Department of Labor and Workforce Development

Scenario: FY2022 Governor (17280)
Component: Workers' Compensation (344)
RDU: Workers' Compensation (112)

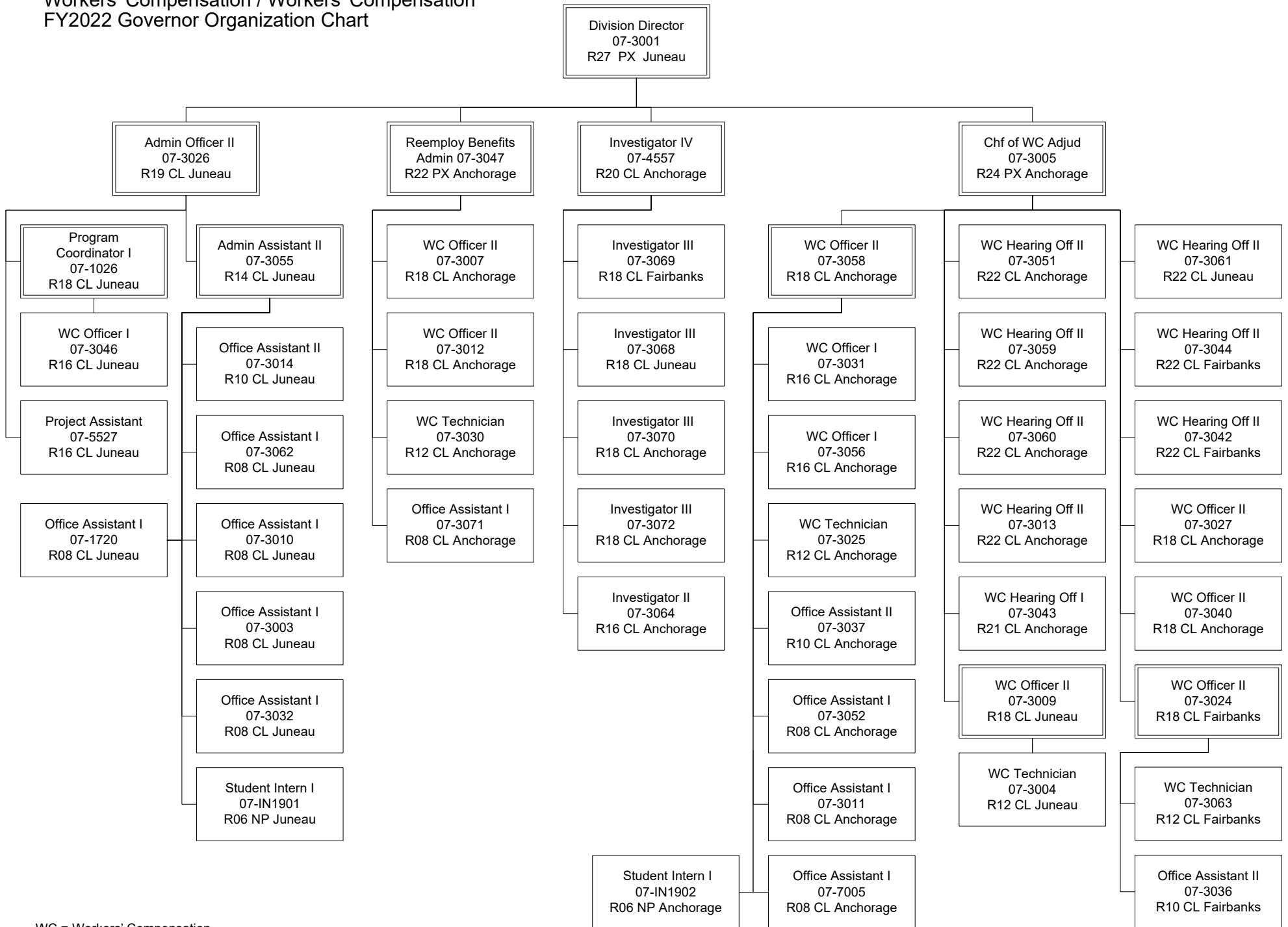
PCN	Job Class Title	Time Status	Retire Code	Barg Unit	Location	Salary Sched	Range / Step	Comp Months	Split / Count	Annual Salaries	COLA	Premium Pay	Annual Benefits	Total Costs	UGF Amount
07-3063	Work Comp Tech	FT	A	GP	Fairbanks	203	12E / F	12.0		46,563	626	0	34,799	81,988	0
07-3064	Investigator II	FT	A	GP	Anchorage	200	16G	12.0		63,882	858	0	40,753	105,493	0
07-3068	Investigator III	FT	A	GP	Juneau	205	18G / J	12.0		77,615	1,043	0	45,474	124,132	0
07-3069	Investigator III	FT	A	GP	Fairbanks	203	18K	12.0		80,886	1,087	0	46,599	128,572	0
07-3070	Investigator III	FT	A	GP	Anchorage	200	18M / N	12.0		85,647	1,151	0	48,236	135,034	0
07-3071	Office Assistant I	FT	A	GP	Anchorage	200	8D / E	12.0		35,071	471	0	30,848	66,390	0
07-3072	Investigator III	FT	A	GP	Anchorage	200	18L	12.0		81,081	1,090	0	46,666	128,837	0
07-4557	Investigator IV	FT	A	SS	Anchorage	200	20K / L	12.0		93,496	0	0	50,974	144,470	0
07-5527	Project Assistant	FT	A	GP	Juneau	205	16G	7.0	**	39,333	638	0	24,484	64,455	0
07-7005	Office Assistant I	FT	A	GP	Anchorage	200	8G	12.0		37,460	503	0	31,669	69,632	0
07-IN1091	Student Intern I	NP	N	GG	Juneau	205	6A	12.0		7,219	79	0	727	8,025	0
07-IN1902	Student Intern I	NP	N	GG	Anchorage	200	6A	12.0		6,874	76	0	692	7,642	0

	Total Positions	New	Deleted	Total Salary Costs:	Total COLA:	Total Premium Pay:	Total Benefits:
				3,018,846	30,951	0	1,853,352
Full Time Positions:	45	0	0				
Part Time Positions:	0	0	0				
Non Permanent Positions:	2	0	0				
Positions in Component:	47	0	0				
				Total Pre-Vacancy:	4,903,149		
				Minus Vacancy Adjustment of 6.00%:	(294,189)		
				Total Post-Vacancy:	4,608,960		
				Plus Lump Sum Premium Pay:	0		
				Plus Board Honoraria Pay:	45,506		
				Personal Services Line 100:	4,654,466		

PCN Funding Sources:	Pre-Vacancy	Post-Vacancy	Percent
1157 Workers Safety and Compensation Administration Account	4,903,149	4,608,960	100.00%
Total PCN Funding:	4,903,149	4,608,960	100.00%

Note: If a position is split, an asterisk (*) will appear in the Split/Count column. If the split position is also counted in the component, two asterisks (**) will appear in this column. [No valid job title] appearing in the Job Class Title indicates that the PCN has an invalid class code or invalid range for the class code effective date of this scenario.

Department of Labor and Workforce Development
 Workers' Compensation / Workers' Compensation
 FY2022 Governor Organization Chart



WC = Workers' Compensation